

Data Path : Z:\pestpcbsrv\HPCHEM1\ECD_L\Data\PL080620\
 Data File : PL060514.D
 Signal(s) : Signal #1: ECD1A.ch Signal #2: ECD2B.ch
 Acq On : 06 Aug 2020 09:02
 Operator : DD\AJ
 Sample : PB130740BL
 Misc :
 ALS Vial : 20 Sample Multiplier: 1

Instrument :
 ECD_L
 ClientSampleId :
 PB130740BL

Integration File signal 1: autoint1.e
 Integration File signal 2: autoint2.e
 Quant Time: Aug 06 11:18:40 2020
 Quant Method : Z:\pestpcbsrv\HPCHEM1\ECD_L\methods\PL073020.M
 Quant Title : GC Extractables
 QLast Update : Thu Jul 30 04:13:43 2020
 Response via : Initial Calibration
 Integrator: ChemStation

Volume Inj. : 1 µl
 Signal #1 Phase : ZB-MR2 Signal #2 Phase: ZB-MR1
 Signal #1 Info : 30M x 0.32mm x0.2 Signal #2 Info : 30M x 0.32mm x0.5µm

Compound	RT#1	RT#2	Resp#1	Resp#2	ng/ml	ng/ml
----------	------	------	--------	--------	-------	-------

 System Monitoring Compounds

1) SA Tetrachlo...	3.463	4.010	34059488	57026926	17.089	21.803 #
28) SA Decachlor...	8.219	9.096	34462188	45785085	22.582	25.455

Target Compounds

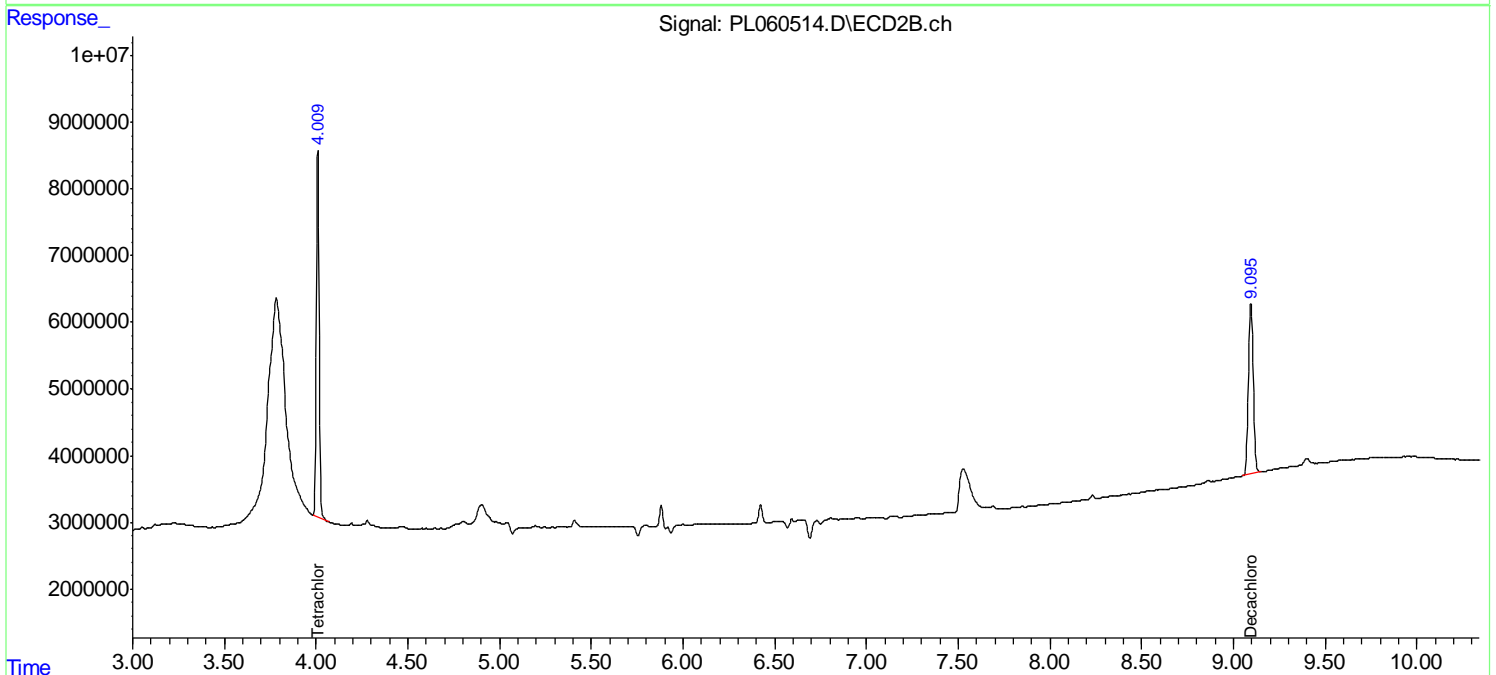
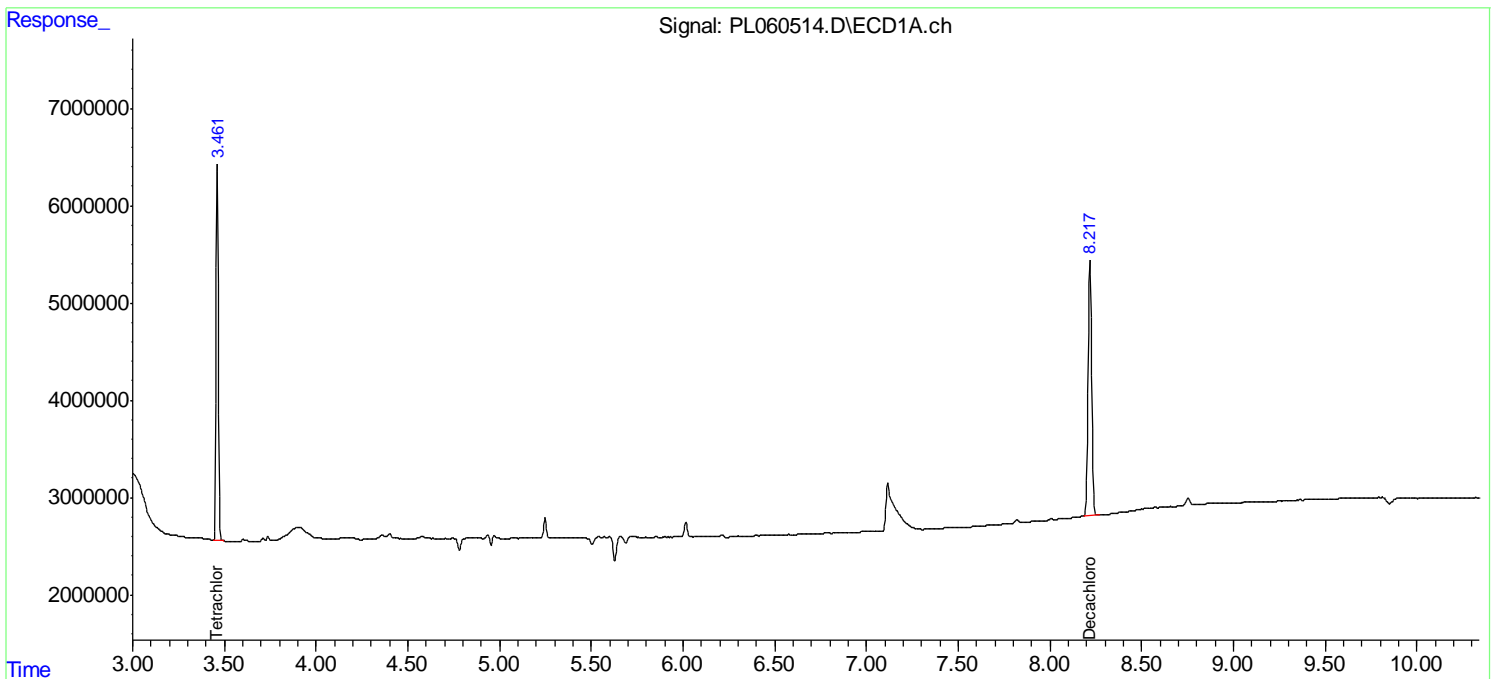
(f)=RT Delta > 1/2 Window (#)=Amounts differ by > 25% (m)=manual int.

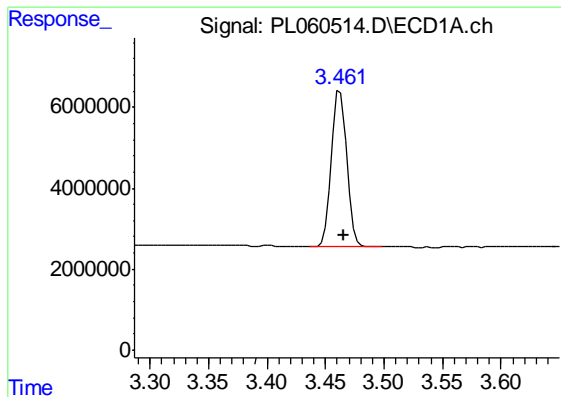
Data Path : Z:\pestpcbsrv\HPCHEM1\ECD_L\Data\PL080620\
 Data File : PL060514.D
 Signal(s) : Signal #1: ECD1A.ch Signal #2: ECD2B.ch
 Acq On : 06 Aug 2020 09:02
 Operator : DD\AJ
 Sample : PB130740BL
 Misc :
 ALS Vial : 20 Sample Multiplier: 1

Instrument :
 ECD_L
 ClientSampleId :
 PB130740BL

Integration File signal 1: autoint1.e
 Integration File signal 2: autoint2.e
 Quant Time: Aug 06 11:18:40 2020
 Quant Method : Z:\pestpcbsrv\HPCHEM1\ECD_L\methods\PL073020.M
 Quant Title : GC Extractables
 QLast Update : Thu Jul 30 04:13:43 2020
 Response via : Initial Calibration
 Integrator: ChemStation

Volume Inj. : 1 µl
 Signal #1 Phase : ZB-MR2 Signal #2 Phase: ZB-MR1
 Signal #1 Info : 30M x 0.32mm x0.2 Signal #2 Info : 30M x 0.32mm x0.5µm

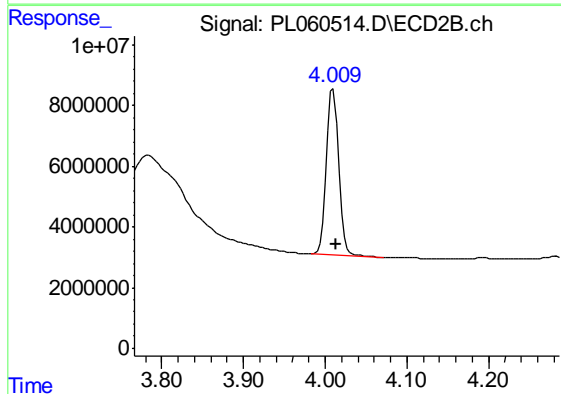




#1 Tetrachloro-m-xylene

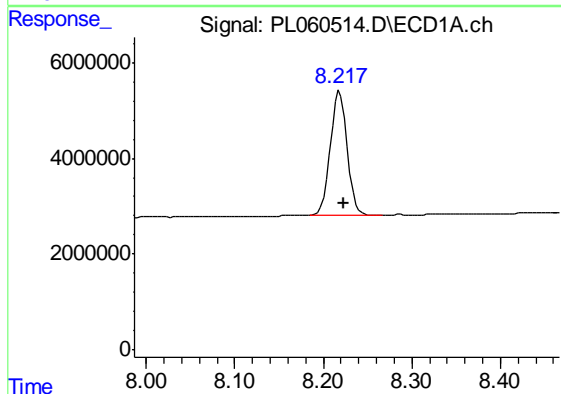
R.T.: 3.463 min
 Delta R.T.: -0.002 min
 Response: 34059488
 Conc: 17.09 ng/ml

Instrument :
 ECD_L
 ClientSampleId :
 PB130740BL



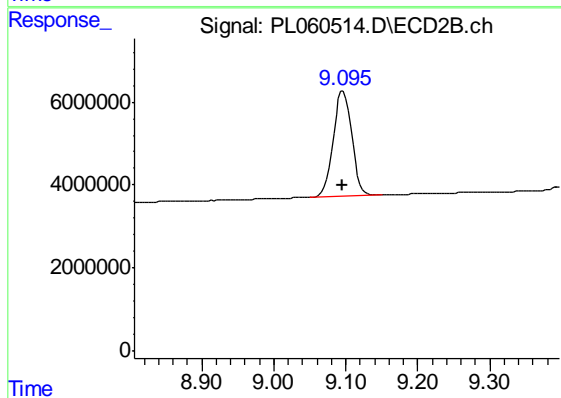
#1 Tetrachloro-m-xylene

R.T.: 4.010 min
 Delta R.T.: -0.003 min
 Response: 57026926
 Conc: 21.80 ng/ml



#28 Decachlorobiphenyl

R.T.: 8.219 min
 Delta R.T.: -0.005 min
 Response: 34462188
 Conc: 22.58 ng/ml



#28 Decachlorobiphenyl

R.T.: 9.096 min
 Delta R.T.: 0.000 min
 Response: 45785085
 Conc: 25.46 ng/ml