

Data Path : Z:\pestpcbsrv\HPCHEM1\ECD_L\Data\PL080621\
 Data File : PL068800.D
 Signal(s) : Signal #1: ECD1A.ch Signal #2: ECD2B.ch
 Acq On : 06 Aug 2021 17:07
 Operator : AR\AJ
 Sample : PEM
 Misc :
 ALS Vial : 3 Sample Multiplier: 1

Instrument :
 ECD_L
 ClientSampled :
 PEM

Manual Integrations
 APPROVED

mohammad
 8/9/2021 4:51:41 PM

Integration File signal 1: autoint1.e
 Integration File signal 2: autoint2.e
 Quant Time: Aug 09 00:52:52 2021
 Quant Method : Z:\pestpcbsrv\HPCHEM1\ECD_L\methods\PL080521.M
 Quant Title : GC Extractables
 QLast Update : Fri Aug 06 03:02:43 2021
 Response via : Initial Calibration
 Integrator: ChemStation

Volume Inj. : 1 µl
 Signal #1 Phase : ZB-MR1 Signal #2 Phase: ZB-MR1
 Signal #1 Info : 30M x 0.32mm x0.2 Signal #2 Info : 30M x 0.32mm x0.5µm

Compound	RT#1	RT#2	Resp#1	Resp#2	ng/ml	ng/ml

System Monitoring Compounds						
1) SA Tetrachlo...	4.641	5.569	8101582	22480238	19.586	22.141
28) SA Decachlor...	10.410	11.491	11808424	20327691	20.547	20.951
Target Compounds						
2) A alpha-BHC	5.345	6.148	7490076	14097270	13.541m	10.352
3) MA gamma-BHC...	5.770	6.544	4970261	13741937	9.158	10.562
6) B beta-BHC	6.148	6.797	3053648	9316479	10.832m	14.381 #
12) B 4,4'-DDE	7.641	8.567	117096	199320	0.242m	0.189m
14) MA Endrin	8.062	8.966	23706332	49258077	49.191	54.267
16) A 4,4'-DDD	8.227	9.107	1398335	2934630	3.258	3.434
17) MA 4,4'-DDT	8.489	9.425	47184172	97825322	97.154	103.368
18) B Endrin al...	8.562	9.333	374170	539568	0.998	0.770
20) A Methoxychlor	9.084	9.911	67474738	124.8E6	215.545	239.888
21) B Endrin ke...	9.309	10.069	1496084	2035906	2.557	1.999

(f)=RT Delta > 1/2 Window (#)=Amounts differ by > 25% (m)=manual int.

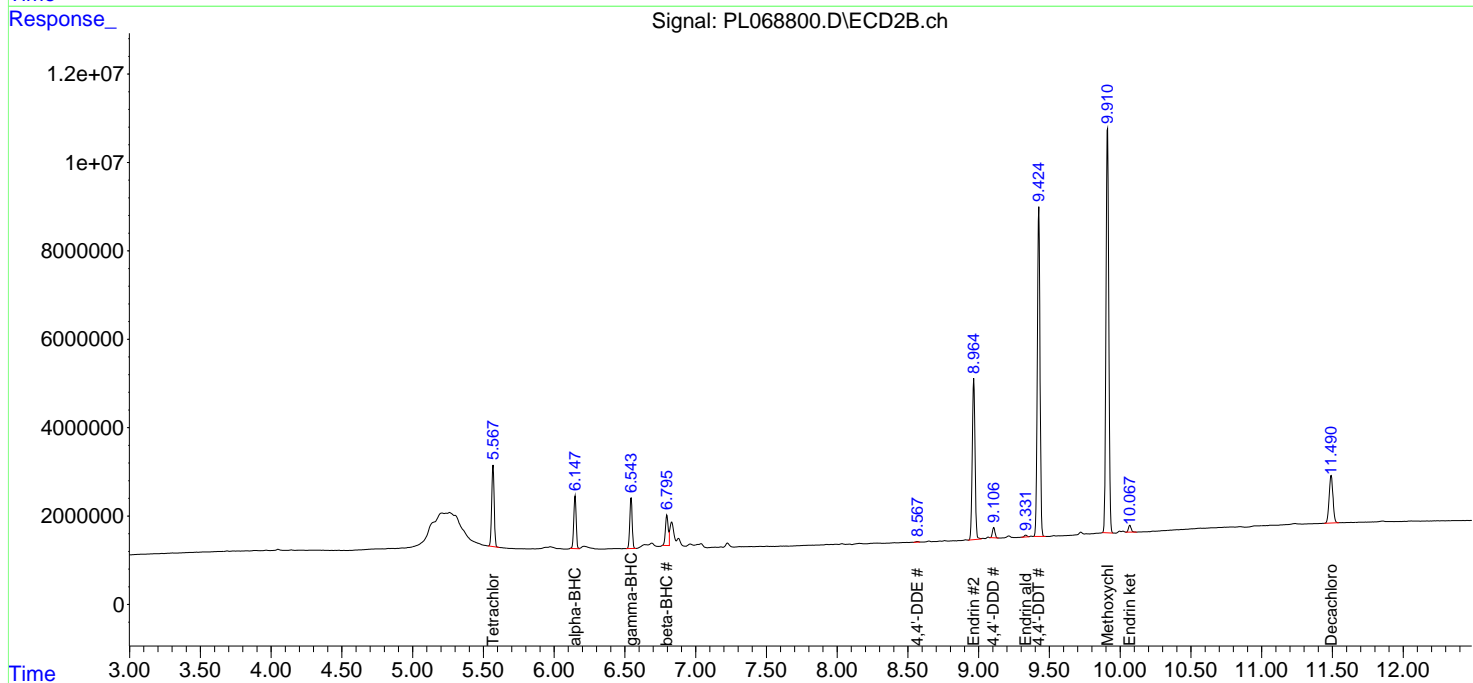
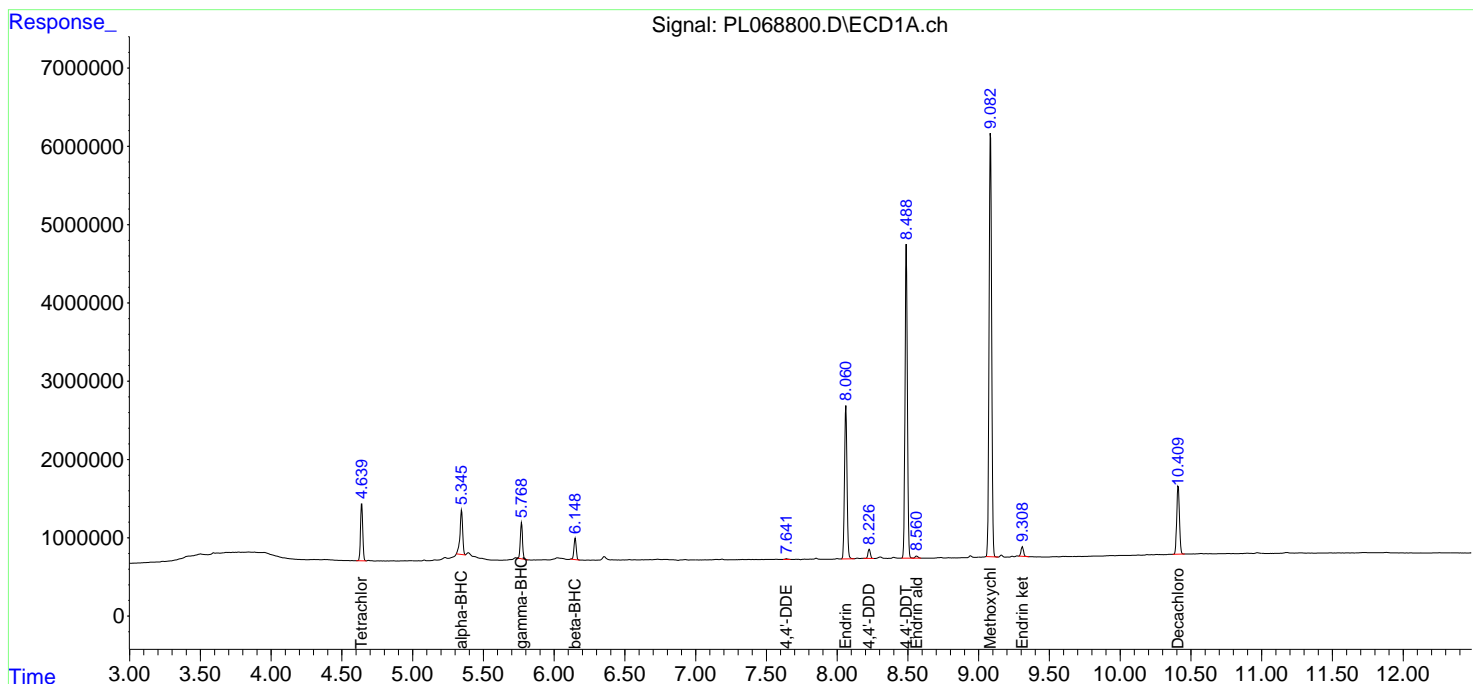
Data Path : Z:\pestpcbsrv\HPCHEM1\ECD_L\Data\PL080621\
 Data File : PL068800.D
 Signal(s) : Signal #1: ECD1A.ch Signal #2: ECD2B.ch
 Acq On : 06 Aug 2021 17:07
 Operator : AR\AJ
 Sample : PEM
 Misc :
 ALS Vial : 3 Sample Multiplier: 1

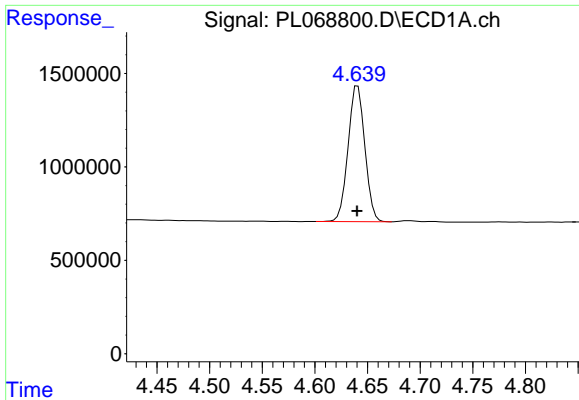
Instrument :
 ECD_L
 ClientSampled :
 PEM

Manual Integrations
APPROVED
 mohammad
 8/9/2021 4:51:41 PM

Integration File signal 1: autoint1.e
 Integration File signal 2: autoint2.e
 Quant Time: Aug 09 00:52:52 2021
 Quant Method : Z:\pestpcbsrv\HPCHEM1\ECD_L\methods\PL080521.M
 Quant Title : GC Extractables
 QLast Update : Fri Aug 06 03:02:43 2021
 Response via : Initial Calibration
 Integrator: ChemStation

Volume Inj. : 1 µl
 Signal #1 Phase : ZB-MR2 Signal #2 Phase: ZB-MR1
 Signal #1 Info : 30M x 0.32mm x0.2 Signal #2 Info : 30M x 0.32mm x0.5µm

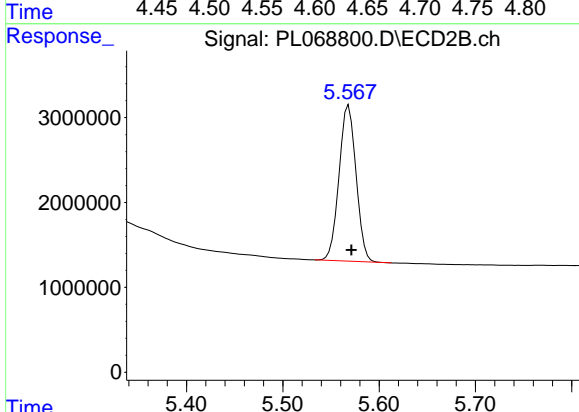




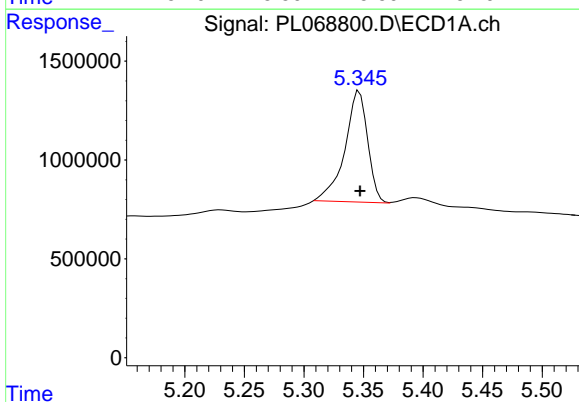
#1 Tetrachloro-m-xylene
 R.T.: 4.641 min
 Delta R.T.: 0.000 min
 Response: 8101582
 Conc: 19.59 ng/ml

Instrument :
 ECD_L
 ClientSampled :
 PEM

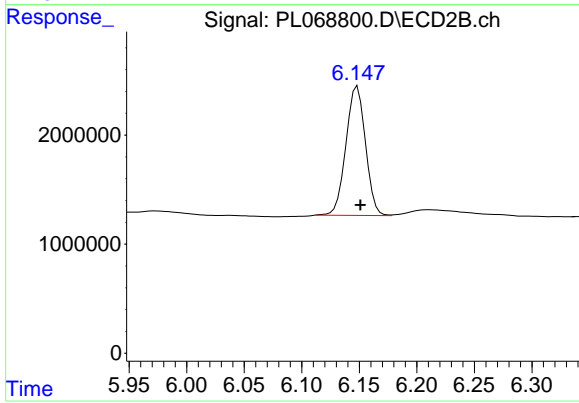
Manual Integrations
 APPROVED
 mohammad
 8/9/2021 4:51:41 PM



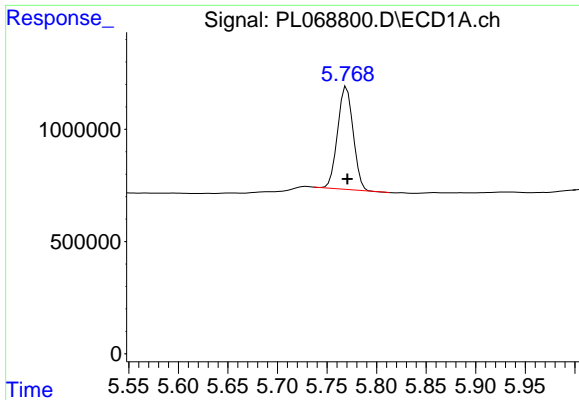
#1 Tetrachloro-m-xylene
 R.T.: 5.569 min
 Delta R.T.: -0.002 min
 Response: 22480238
 Conc: 22.14 ng/ml



#2 alpha-BHC
 R.T.: 5.345 min
 Delta R.T.: -0.002 min
 Response: 7490076
 Conc: 13.54 ng/ml m



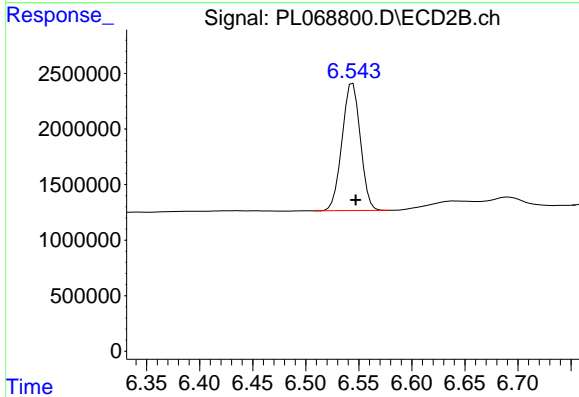
#2 alpha-BHC
 R.T.: 6.148 min
 Delta R.T.: -0.003 min
 Response: 14097270
 Conc: 10.35 ng/ml



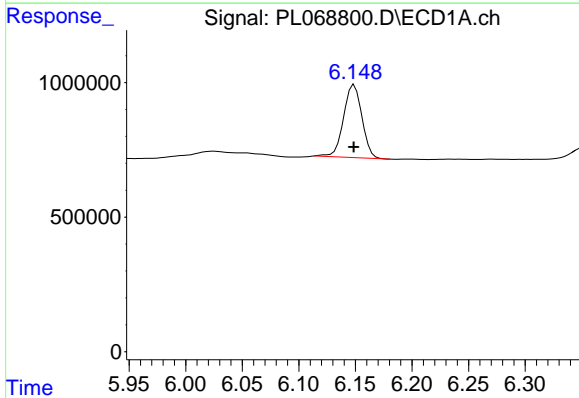
#3 gamma-BHC (Lindane)
 R.T.: 5.770 min
 Delta R.T.: 0.000 min
 Response: 4970261
 Conc: 9.16 ng/ml

Instrument :
 ECD_L
 ClientSampled :
 PEM

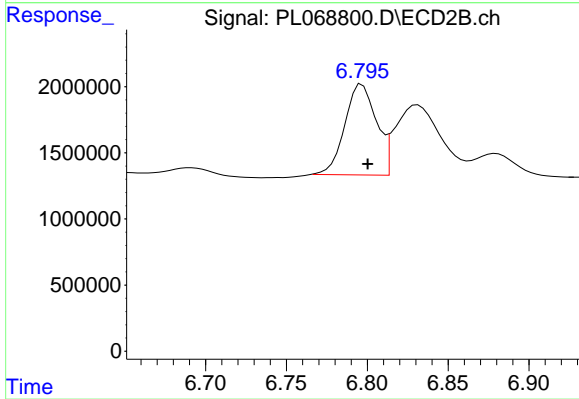
Manual Integrations
 APPROVED
 mohammad
 8/9/2021 4:51:41 PM



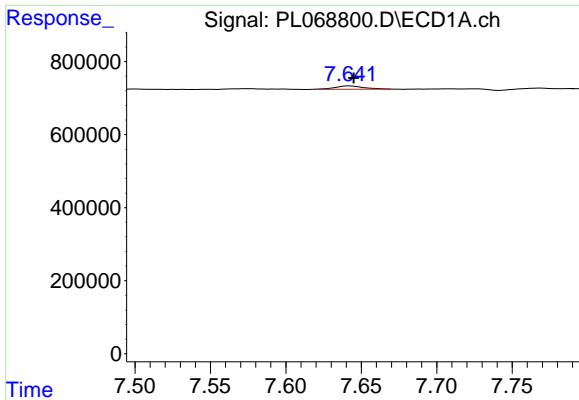
#3 gamma-BHC (Lindane)
 R.T.: 6.544 min
 Delta R.T.: -0.003 min
 Response: 13741937
 Conc: 10.56 ng/ml



#6 beta-BHC
 R.T.: 6.148 min
 Delta R.T.: -0.001 min
 Response: 3053648
 Conc: 10.83 ng/ml m



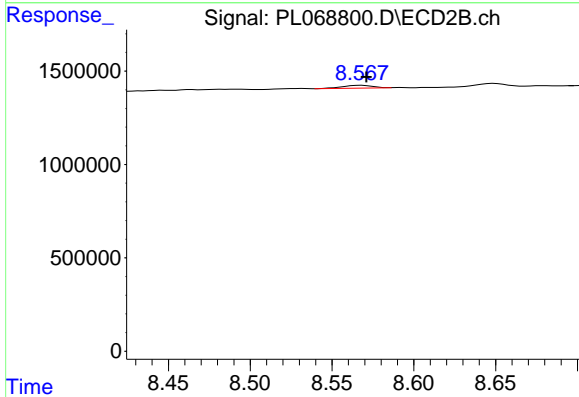
#6 beta-BHC
 R.T.: 6.797 min
 Delta R.T.: -0.003 min
 Response: 9316479
 Conc: 14.38 ng/ml



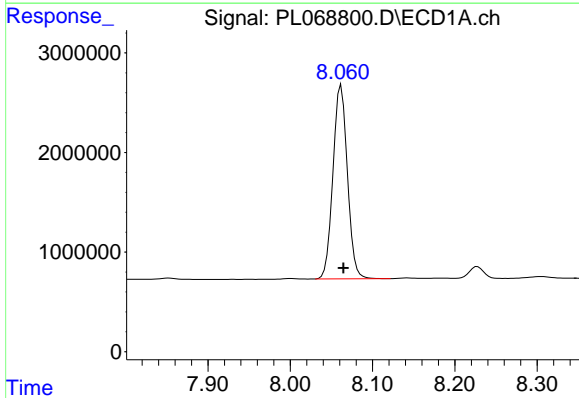
#12 4,4'-DDE
 R.T.: 7.641 min
 Delta R.T.: -0.004 min
 Response: 117096
 Conc: 0.24 ng/ml m

Instrument :
 ECD_L
ClientSampled :
 PEM

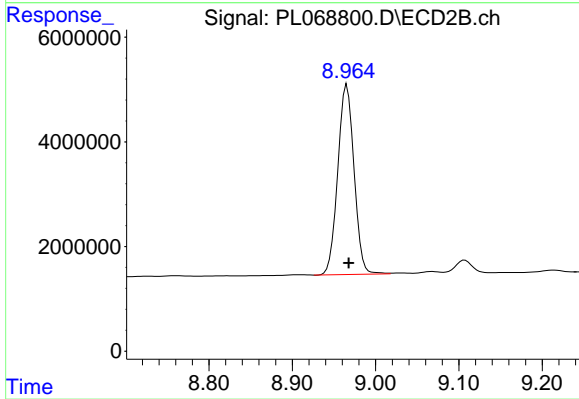
Manual Integrations
APPROVED
 mohammad
 8/9/2021 4:51:41 PM



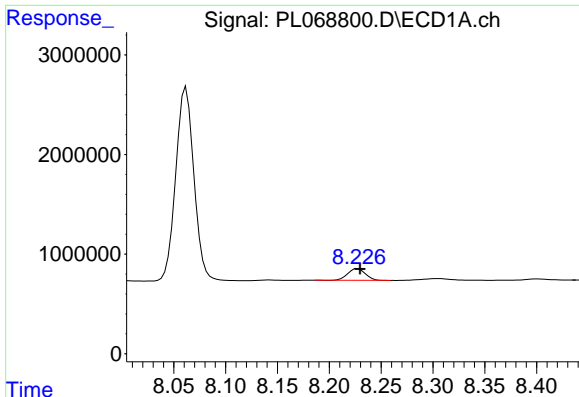
#12 4,4'-DDE
 R.T.: 8.567 min
 Delta R.T.: -0.004 min
 Response: 199320
 Conc: 0.19 ng/ml m



#14 Endrin
 R.T.: 8.062 min
 Delta R.T.: -0.002 min
 Response: 23706332
 Conc: 49.19 ng/ml



#14 Endrin
 R.T.: 8.966 min
 Delta R.T.: -0.002 min
 Response: 49258077
 Conc: 54.27 ng/ml



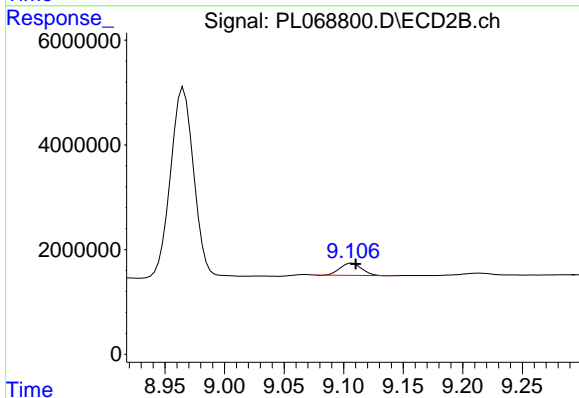
#16 4,4'-DDD

R.T.: 8.227 min
 Delta R.T.: -0.002 min
 Response: 1398335
 Conc: 3.26 ng/ml

Instrument :
 ECD_L
 ClientSampled :
 PEM

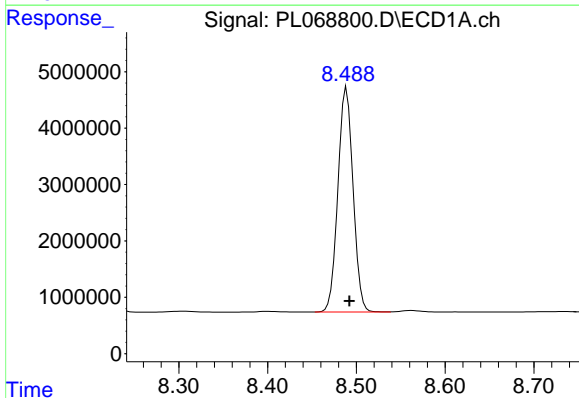
Manual Integrations
 APPROVED

mohammad
 8/9/2021 4:51:41 PM



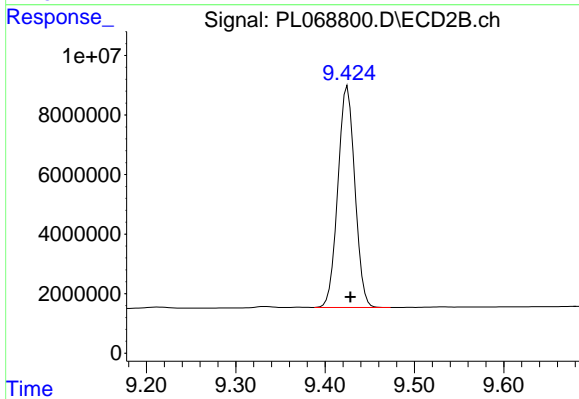
#16 4,4'-DDD

R.T.: 9.107 min
 Delta R.T.: -0.003 min
 Response: 2934630
 Conc: 3.43 ng/ml



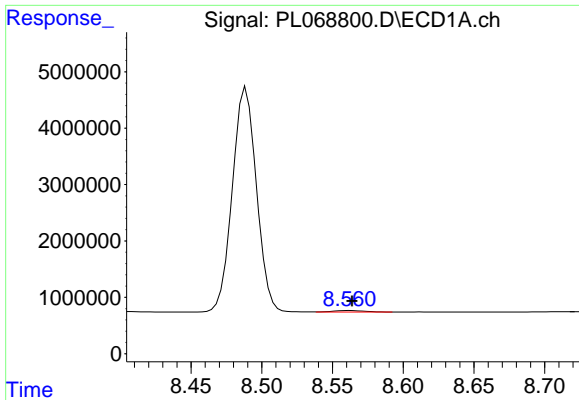
#17 4,4'-DDT

R.T.: 8.489 min
 Delta R.T.: -0.003 min
 Response: 47184172
 Conc: 97.15 ng/ml



#17 4,4'-DDT

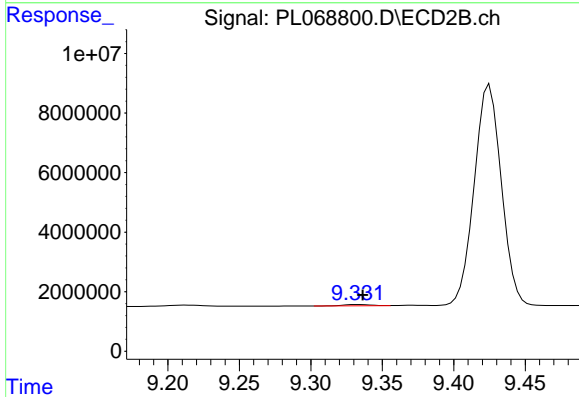
R.T.: 9.425 min
 Delta R.T.: -0.003 min
 Response: 97825322
 Conc: 103.37 ng/ml



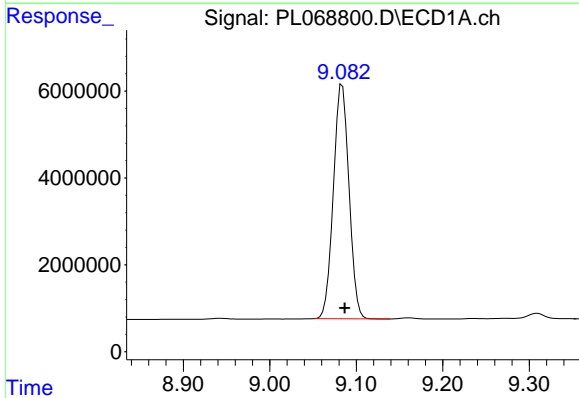
#18 Endrin aldehyde
 R.T.: 8.562 min
 Delta R.T.: -0.002 min
 Response: 374170
 Conc: 1.00 ng/ml

Instrument :
 ECD_L
 ClientSampled :
 PEM

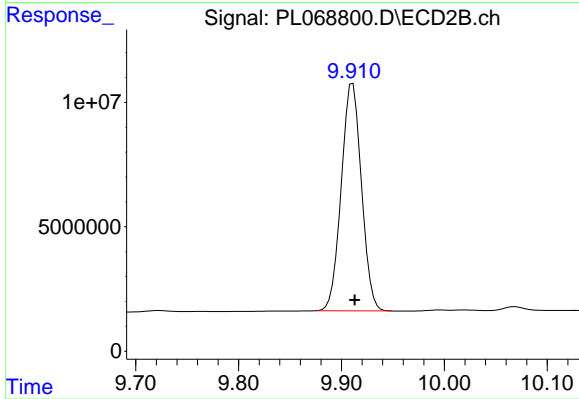
Manual Integrations
 APPROVED
 mohammad
 8/9/2021 4:51:41 PM



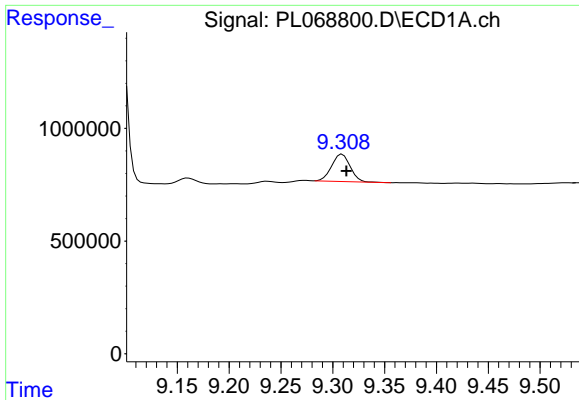
#18 Endrin aldehyde
 R.T.: 9.333 min
 Delta R.T.: -0.003 min
 Response: 539568
 Conc: 0.77 ng/ml



#20 Methoxychlor
 R.T.: 9.084 min
 Delta R.T.: -0.003 min
 Response: 67474738
 Conc: 215.55 ng/ml



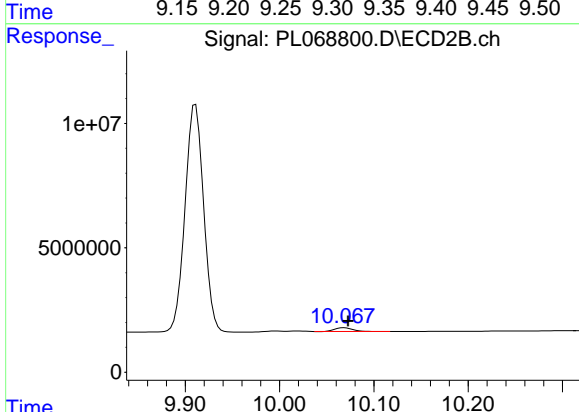
#20 Methoxychlor
 R.T.: 9.911 min
 Delta R.T.: -0.002 min
 Response: 124836318
 Conc: 239.89 ng/ml



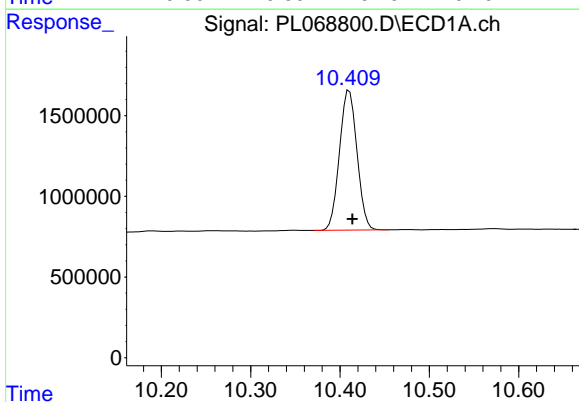
#21 Endrin ketone
 R.T.: 9.309 min
 Delta R.T.: -0.004 min
 Response: 1496084
 Conc: 2.56 ng/ml

Instrument :
 ECD_L
 ClientSampled :
 PEM

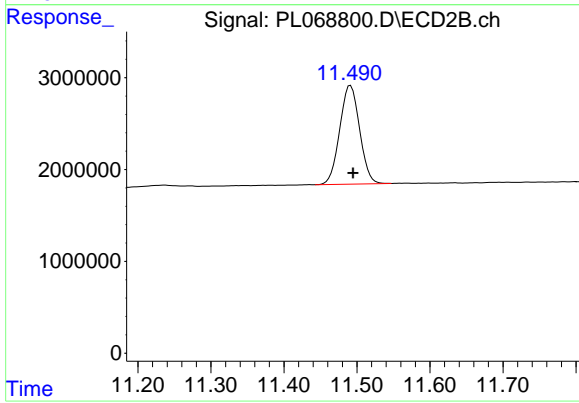
Manual Integrations
APPROVED
 mohammad
 8/9/2021 4:51:41 PM



#21 Endrin ketone
 R.T.: 10.069 min
 Delta R.T.: -0.004 min
 Response: 2035906
 Conc: 2.00 ng/ml



#28 Decachlorobiphenyl
 R.T.: 10.410 min
 Delta R.T.: -0.003 min
 Response: 11808424
 Conc: 20.55 ng/ml



#28 Decachlorobiphenyl
 R.T.: 11.491 min
 Delta R.T.: -0.003 min
 Response: 20327691
 Conc: 20.95 ng/ml