

Data Path : Z:\pestpcbsrv\HPCHEM1\ECD\_L\Data\PL080621\  
 Data File : PL068811.D  
 Signal(s) : Signal #1: ECD1A.ch Signal #2: ECD2B.ch  
 Acq On : 06 Aug 2021 21:00  
 Operator : AR\AJ  
 Sample : M3295-01  
 Misc :  
 ALS Vial : 23 Sample Multiplier: 1

**Instrument :**  
 ECD\_L  
**ClientSampled :**  
 FK-EF-01-022-ABCD

**Manual Integrations**  
**APPROVED**  
 mohammad  
 8/9/2021 4:51:59 PM

Integration File signal 1: autoint1.e  
 Integration File signal 2: autoint2.e  
 Quant Time: Aug 09 00:55:29 2021  
 Quant Method : Z:\pestpcbsrv\HPCHEM1\ECD\_L\methods\PL080521.M  
 Quant Title : GC Extractables  
 QLast Update : Fri Aug 06 03:02:43 2021  
 Response via : Initial Calibration  
 Integrator: ChemStation

Volume Inj. : 1 µl  
 Signal #1 Phase : ZB-MR2 Signal #2 Phase: ZB-MR1  
 Signal #1 Info : 30M x 0.32mm x0.2 Signal #2 Info : 30M x 0.32mm x0.5µm

Compound	RT#1	RT#2	Resp#1	Resp#2	ng/ml	ng/ml
-----						
System Monitoring Compounds						
1) SA Tetrachlo...	4.638	5.568	6155372	16351236	14.881	16.104
28) SA Decachlor...	10.408	11.488	8229606	15556992	14.320	16.034
Target Compounds						
10) B gamma-Chl...	7.356	8.298	311441	816584	0.568m	0.713m#
11) B alpha-Chl...	7.425	8.383	573392	1510911	1.042	1.316 #
-----						

(f)=RT Delta > 1/2 Window (#)=Amounts differ by > 25% (m)=manual int.

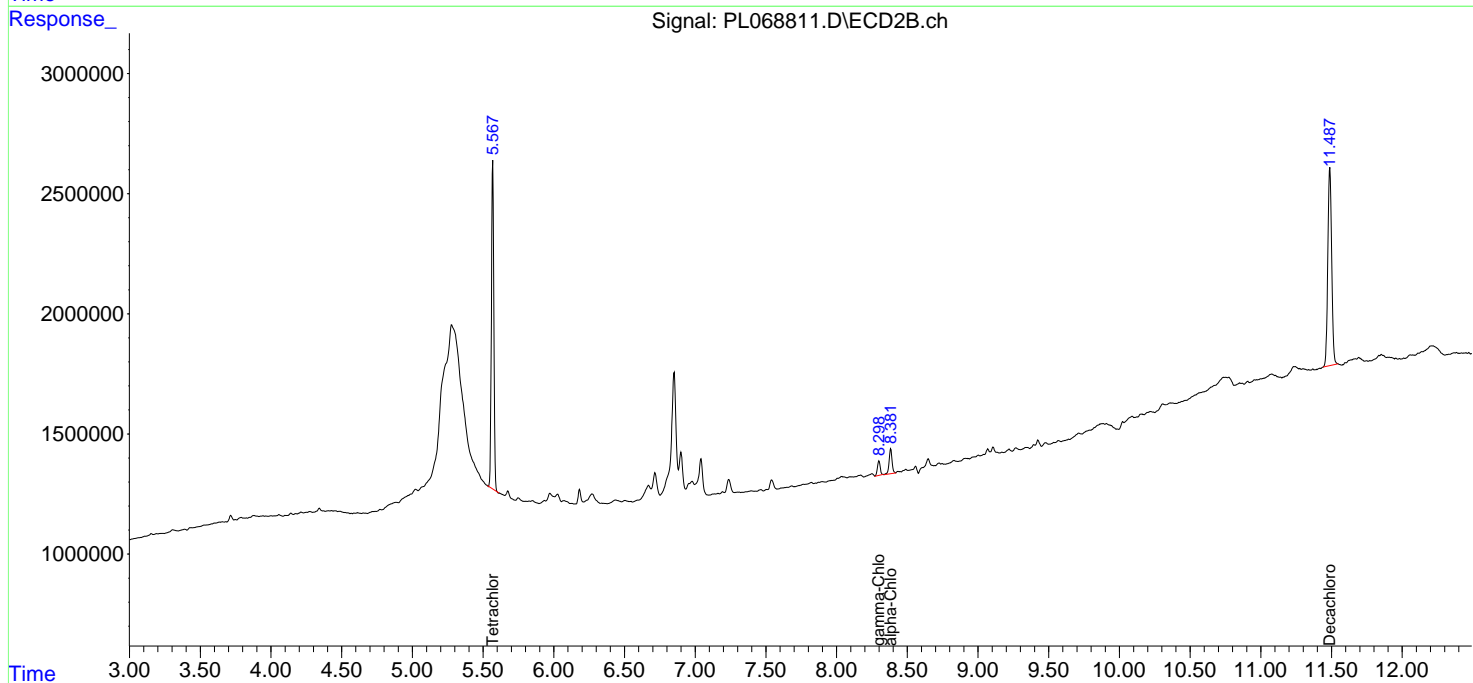
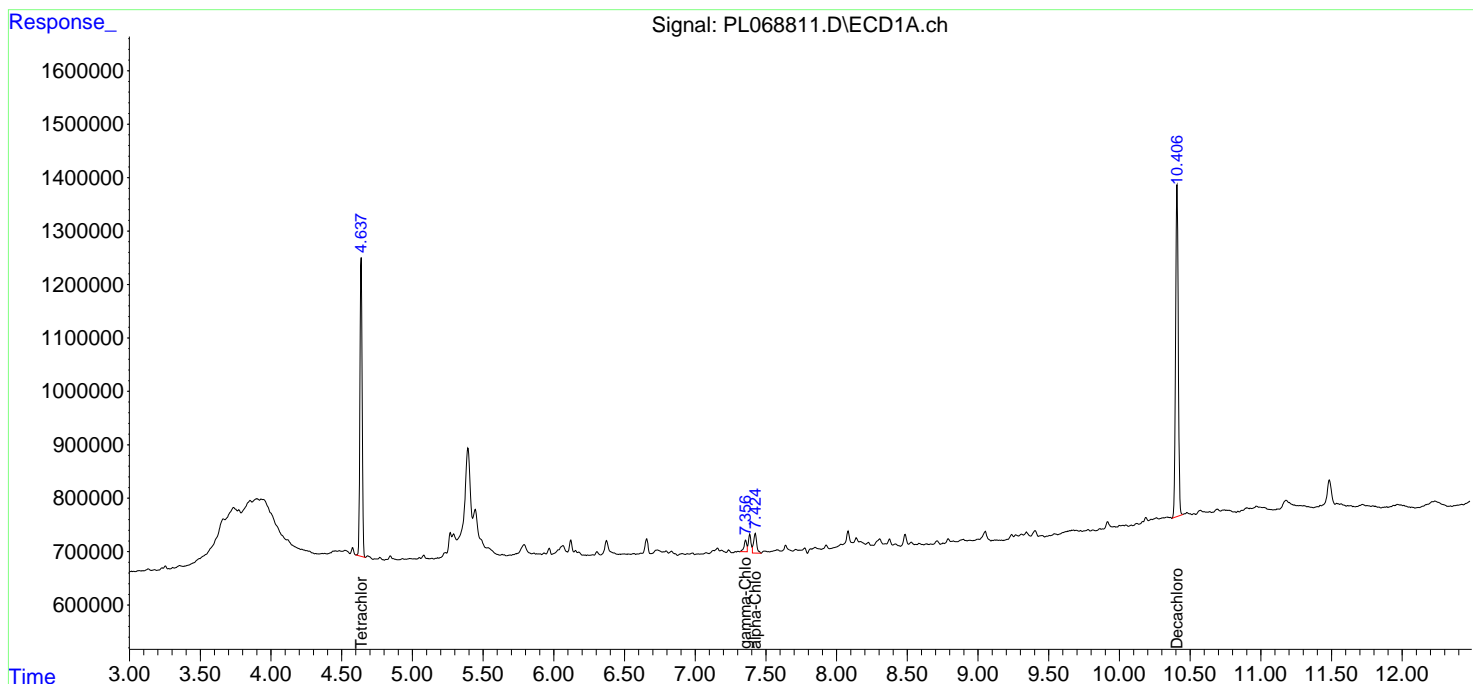
Data Path : Z:\pestpcbsrv\HPCHEM1\ECD\_L\Data\PL080621\  
 Data File : PL068811.D  
 Signal(s) : Signal #1: ECD1A.ch Signal #2: ECD2B.ch  
 Acq On : 06 Aug 2021 21:00  
 Operator : AR\AJ  
 Sample : M3295-01  
 Misc :  
 ALS Vial : 23 Sample Multiplier: 1

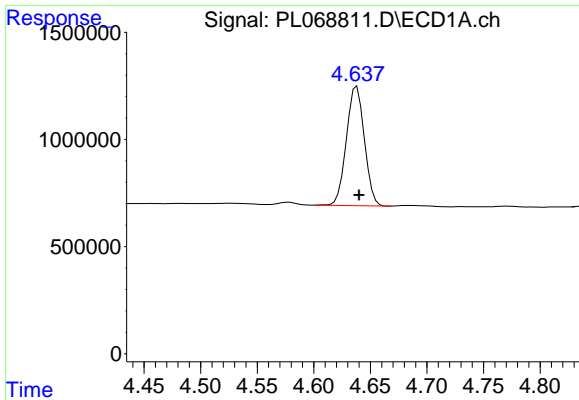
**Instrument :**  
 ECD\_L  
**Client Sampled :**  
 FK-EF-01-022-ABCD

**Manual Integrations**  
**APPROVED**  
 mohammad  
 8/9/2021 4:51:59 PM

Integration File signal 1: autoint1.e  
 Integration File signal 2: autoint2.e  
 Quant Time: Aug 09 00:55:29 2021  
 Quant Method : Z:\pestpcbsrv\HPCHEM1\ECD\_L\methods\PL080521.M  
 Quant Title : GC Extractables  
 QLast Update : Fri Aug 06 03:02:43 2021  
 Response via : Initial Calibration  
 Integrator: ChemStation

Volume Inj. : 1 µl  
 Signal #1 Phase : ZB-MR2 Signal #2 Phase: ZB-MR1  
 Signal #1 Info : 30M x 0.32mm x0.2 Signal #2 Info : 30M x 0.32mm x0.5µm

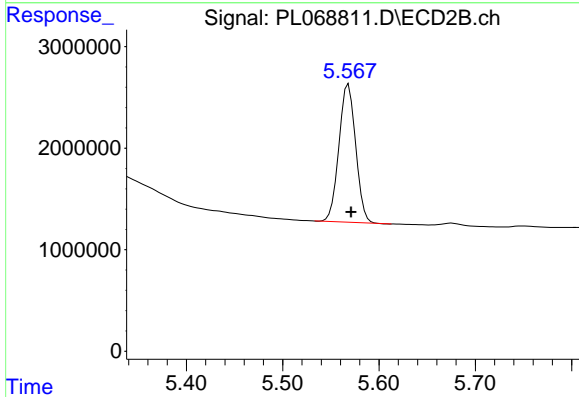




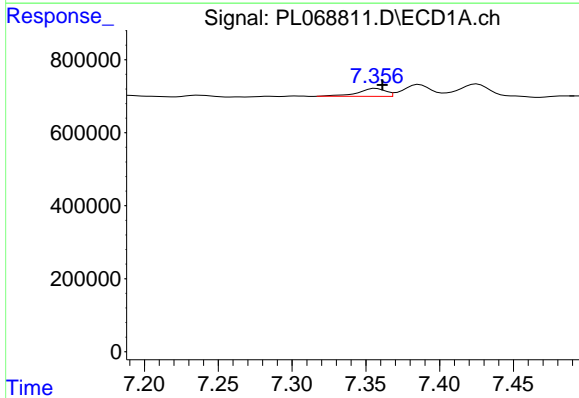
#1 Tetrachloro-m-xylene  
 R.T.: 4.638 min  
 Delta R.T.: -0.002 min  
 Response: 6155372  
 Conc: 14.88 ng/ml

**Instrument :**  
 ECD\_L  
**ClientSampleId :**  
 FK-EF-01-022-ABCD

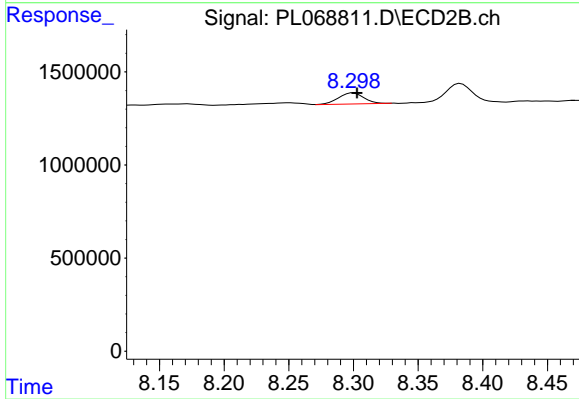
**Manual Integrations**  
**APPROVED**  
 mohammad  
 8/9/2021 4:51:59 PM



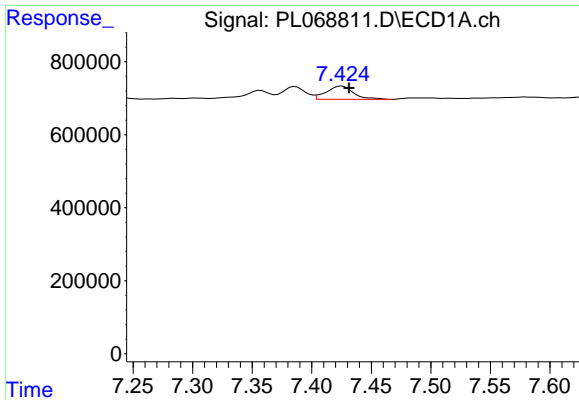
#1 Tetrachloro-m-xylene  
 R.T.: 5.568 min  
 Delta R.T.: -0.003 min  
 Response: 16351236  
 Conc: 16.10 ng/ml



#10 gamma-Chlordane  
 R.T.: 7.356 min  
 Delta R.T.: -0.006 min  
 Response: 311441  
 Conc: 0.57 ng/ml m



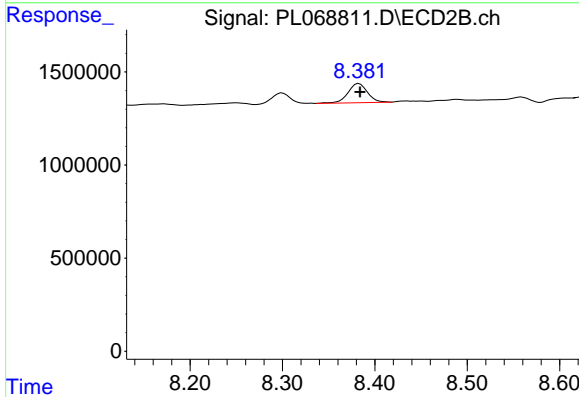
#10 gamma-Chlordane  
 R.T.: 8.298 min  
 Delta R.T.: -0.005 min  
 Response: 816584  
 Conc: 0.71 ng/ml m



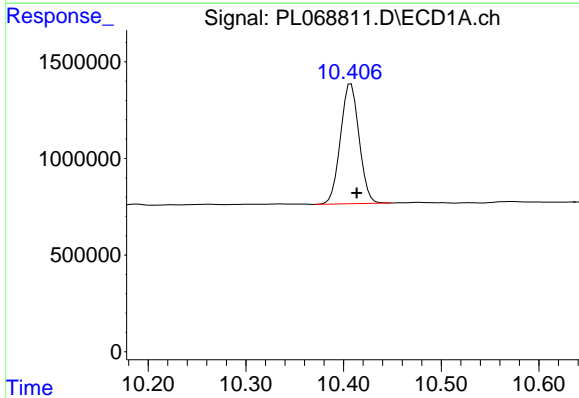
#11 alpha-Chlordane  
 R.T.: 7.425 min  
 Delta R.T.: -0.006 min  
 Response: 573392  
 Conc: 1.04 ng/ml

**Instrument :**  
 ECD\_L  
**ClientSampleId :**  
 FK-EF-01-022-ABCD

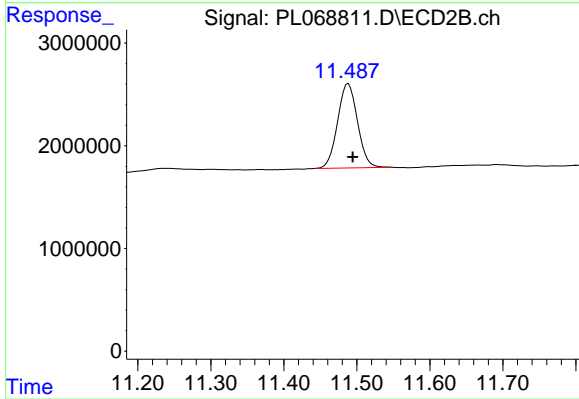
**Manual Integrations**  
**APPROVED**  
 mohammad  
 8/9/2021 4:51:59 PM



#11 alpha-Chlordane  
 R.T.: 8.383 min  
 Delta R.T.: -0.001 min  
 Response: 1510911  
 Conc: 1.32 ng/ml



#28 Decachlorobiphenyl  
 R.T.: 10.408 min  
 Delta R.T.: -0.006 min  
 Response: 8229606  
 Conc: 14.32 ng/ml



#28 Decachlorobiphenyl  
 R.T.: 11.488 min  
 Delta R.T.: -0.006 min  
 Response: 15556992  
 Conc: 16.03 ng/ml