

Data Path : Z:\pestpcbsrv\HPCHEM1\ECD_L\Data\PL080621\
 Data File : PL068812.D
 Signal(s) : Signal #1: ECD1A.ch Signal #2: ECD2B.ch
 Acq On : 06 Aug 2021 21:17
 Operator : AR\AJ
 Sample : M3296-01
 Misc :
 ALS Vial : 24 Sample Multiplier: 1

Instrument :
 ECD_L
 ClientSampleId :
 FK-BPM-03-026-ABCD

Integration File signal 1: autoint1.e
 Integration File signal 2: autoint2.e
 Quant Time: Aug 09 00:55:43 2021
 Quant Method : Z:\pestpcbsrv\HPCHEM1\ECD_L\methods\PL080521.M
 Quant Title : GC Extractables
 QLast Update : Fri Aug 06 03:02:43 2021
 Response via : Initial Calibration
 Integrator: ChemStation

Volume Inj. : 1 µl
 Signal #1 Phase : ZB-MR2 Signal #2 Phase: ZB-MR1
 Signal #1 Info : 30M x 0.32mm x0.2 Signal #2 Info : 30M x 0.32mm x0.5µm

Compound	RT#1	RT#2	Resp#1	Resp#2	ng/ml	ng/ml

System Monitoring Compounds						
1) SA Tetrachlo...	4.638	5.568	11378796	30301862	27.509	29.844
28) SA Decachlor...	10.408	11.488	13856554	25783653	24.111	26.574

Target Compounds

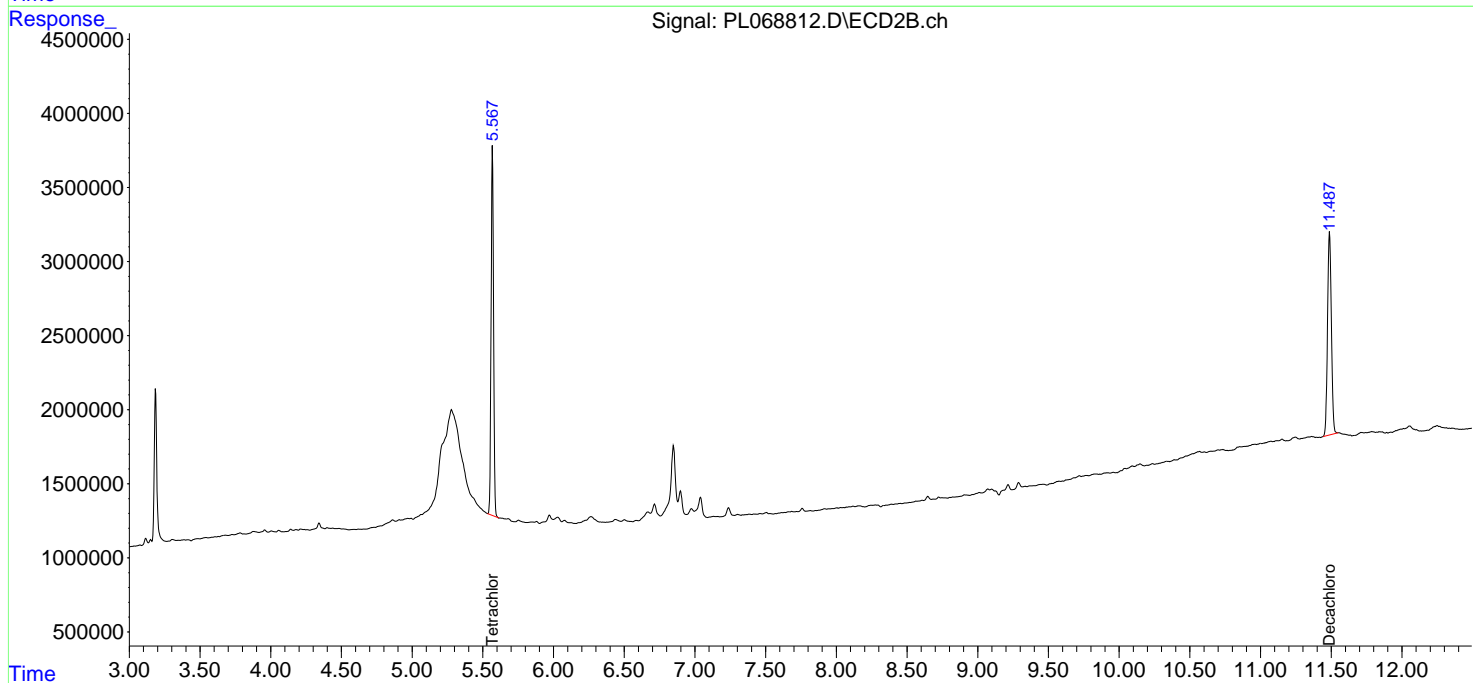
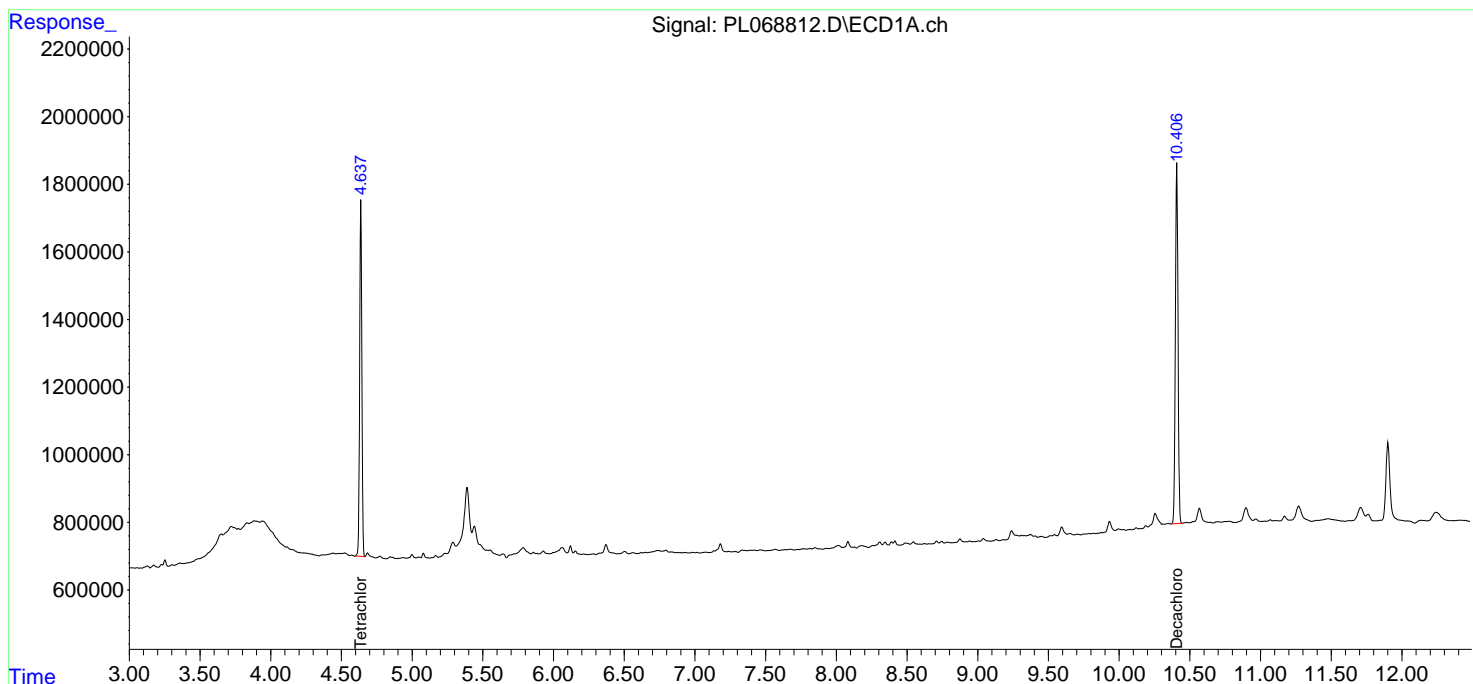
(f)=RT Delta > 1/2 Window (#)=Amounts differ by > 25% (m)=manual int.

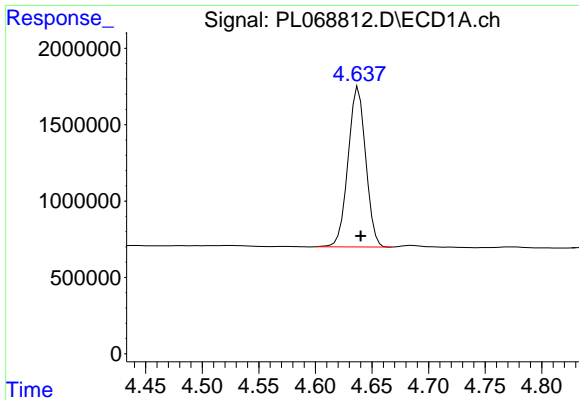
Data Path : Z:\pestpcbsrv\HPCHEM1\ECD_L\Data\PL080621\
 Data File : PL068812.D
 Signal(s) : Signal #1: ECD1A.ch Signal #2: ECD2B.ch
 Acq On : 06 Aug 2021 21:17
 Operator : AR\AJ
 Sample : M3296-01
 Misc :
 ALS Vial : 24 Sample Multiplier: 1

Instrument :
 ECD_L
 ClientSampleId :
 FK-BPM-03-026-ABCD

Integration File signal 1: autoint1.e
 Integration File signal 2: autoint2.e
 Quant Time: Aug 09 00:55:43 2021
 Quant Method : Z:\pestpcbsrv\HPCHEM1\ECD_L\methods\PL080521.M
 Quant Title : GC Extractables
 QLast Update : Fri Aug 06 03:02:43 2021
 Response via : Initial Calibration
 Integrator: ChemStation

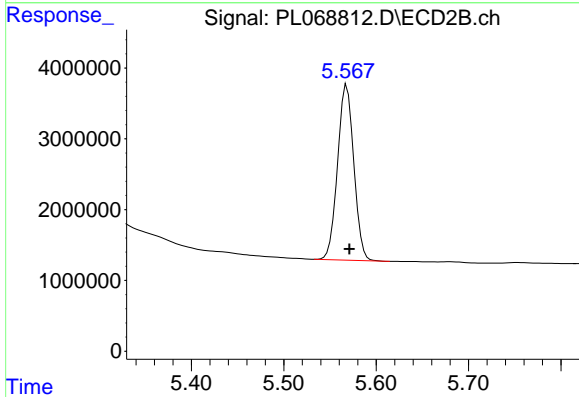
Volume Inj. : 1 µl
 Signal #1 Phase : ZB-MR2 Signal #2 Phase: ZB-MR1
 Signal #1 Info : 30M x 0.32mm x0.2 Signal #2 Info : 30M x 0.32mm x0.5µm



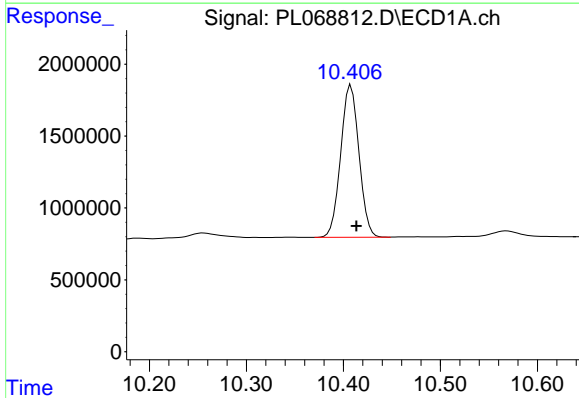


#1 Tetrachloro-m-xylene
R.T.: 4.638 min
Delta R.T.: -0.002 min
Response: 11378796
Conc: 27.51 ng/ml

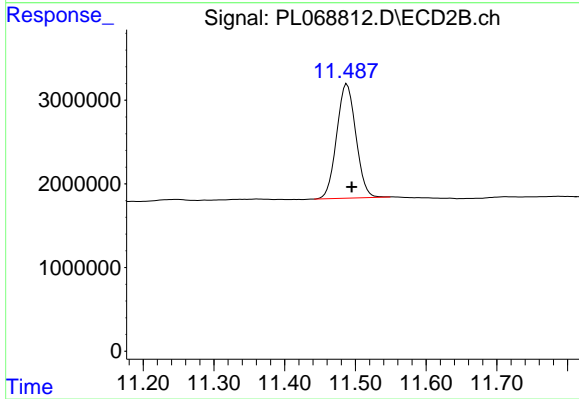
Instrument :
ECD_L
ClientSampleId :
FK-BPM-03-026-ABCD



#1 Tetrachloro-m-xylene
R.T.: 5.568 min
Delta R.T.: -0.003 min
Response: 30301862
Conc: 29.84 ng/ml



#28 Decachlorobiphenyl
R.T.: 10.408 min
Delta R.T.: -0.006 min
Response: 13856554
Conc: 24.11 ng/ml



#28 Decachlorobiphenyl
R.T.: 11.488 min
Delta R.T.: -0.006 min
Response: 25783653
Conc: 26.57 ng/ml