

Data Path : Z:\pestpcbsrv\HPCHEM1\ECD_L\Data\PL080624\
 Data File : PL090832.D
 Signal(s) : Signal #1: ECD1A.ch Signal #2: ECD2B.ch
 Acq On : 06 Aug 2024 19:41
 Operator : AR\AJ
 Sample : P3474-04
 Misc :
 ALS Vial : 21 Sample Multiplier: 1

Instrument :
 ECD_L
 ClientSampleId :
 WC-B1-COMP

Integration File signal 1: autoint1.e
 Integration File signal 2: autoint2.e
 Quant Time: Aug 07 02:19:14 2024
 Quant Method : Z:\pestpcbsrv\HPCHEM1\ECD_L\methods\PL080524.M
 Quant Title : GC Extractables
 QLast Update : Tue Aug 06 10:55:36 2024
 Response via : Initial Calibration
 Integrator: ChemStation

Volume Inj. : 1 µl
 Signal #1 Phase : ZB-MR2 Signal #2 Phase: ZB-MR1
 Signal #1 Info : 30M x 0.32mm x0.2 Signal #2 Info : 30M x 0.32mm x0.5µm

Compound	RT#1	RT#2	Resp#1	Resp#2	ng/ml	ng/ml
System Monitoring Compounds						
1) SA Tetrachlo...	3.545	2.787	37201802	34014316	19.213	19.675
28) SA Decachlor...	9.055	7.926	26414818	29025707	18.385	17.389
Target Compounds						
3) MA gamma-BHC...	0.000	3.638f	0	490295	N.D.	0.209 #
4) MA Heptachlor	0.000	3.981f	0	77541	N.D.	0.033 #
5) MB Aldrin	0.000	4.245	0	175442	N.D.	0.079 #
6) B beta-BHC	4.542	3.926	3974881	296793	3.157	0.279 #
7) B delta-BHC	0.000	4.149	0	26406	N.D.	0.012 #
9) A Endosulfan I	0.000	5.113	0	39846	N.D.	0.021 #
10) B gamma-Chl...	0.000	4.995	0	146228	N.D.	0.068 #
11) B alpha-Chl...	0.000	5.047	0	365700	N.D.	0.171 #
12) B 4,4'-DDE	0.000	5.245	0	569699	N.D.	0.304 #
13) MA Dieldrin	0.000	5.390	0	1156301	N.D.	0.560 #
14) MA Endrin	0.000	5.665	0	777903	N.D.	0.426 #
15) B Endosulfa...	0.000	5.949	0	276841	N.D.	0.152 #
16) A 4,4'-DDD	0.000	5.804	0	355757	N.D.	0.229 #
17) MA 4,4'-DDT	7.025	6.051	3440187	761263	1.930	0.459 #
18) B Endrin al...	0.000	6.123	0	60196	N.D.	0.043 #
19) B Endosulfa...	0.000	6.365	0	386950	N.D.	0.222 #
20) A Methoxychlor	0.000	6.625	0	409577	N.D.	0.444 #
22) Mirex	0.000	7.036	0	70021	N.D.	0.042 #
23) Chlordane-1	0.000	3.799	0	204796	N.D.	3.038 #
24) Chlordane-2	0.000	4.364	0	142354	N.D.	1.712 #
25) Chlordane-3	0.000	4.995	0	146228	N.D.	0.653 #
26) Chlordane-4	0.000	5.047	0	365700	N.D.	1.709 #
27) Chlordane-5	0.000	5.745f	0	1286300	N.D.	19.247 #

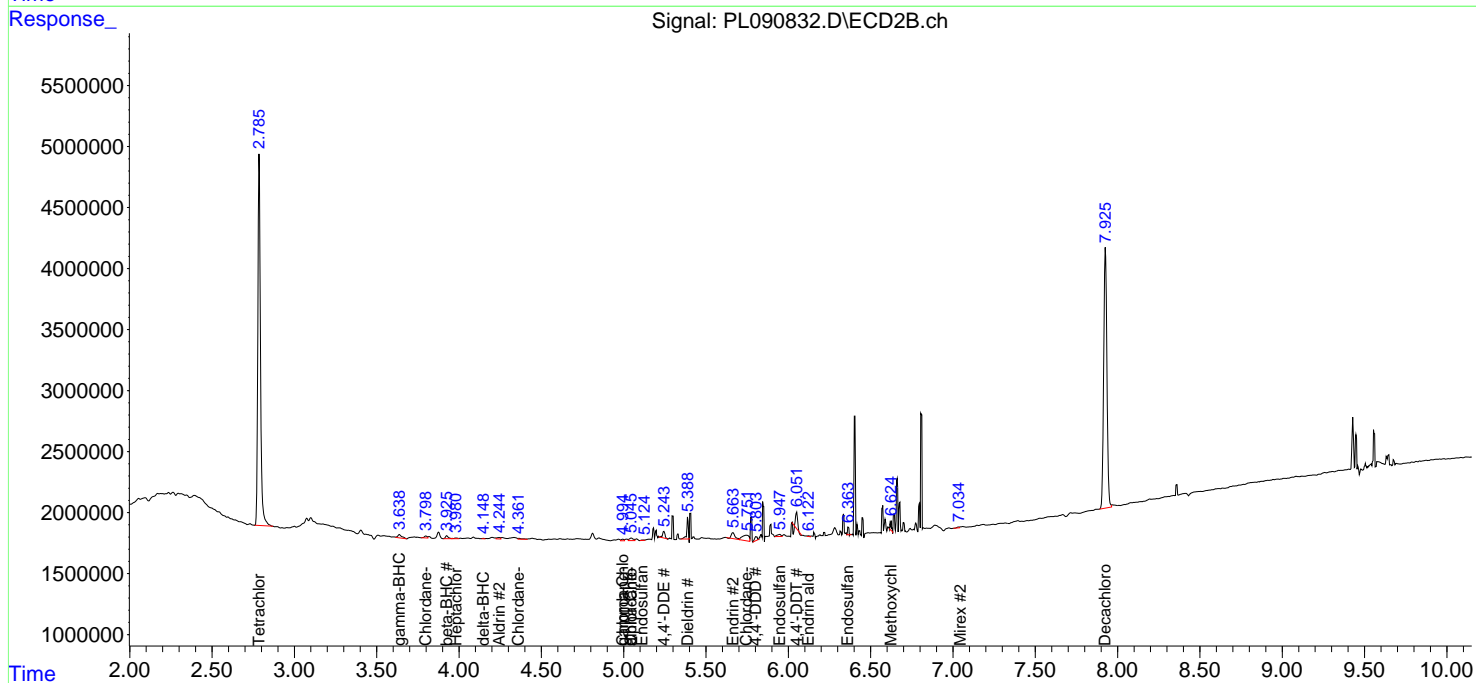
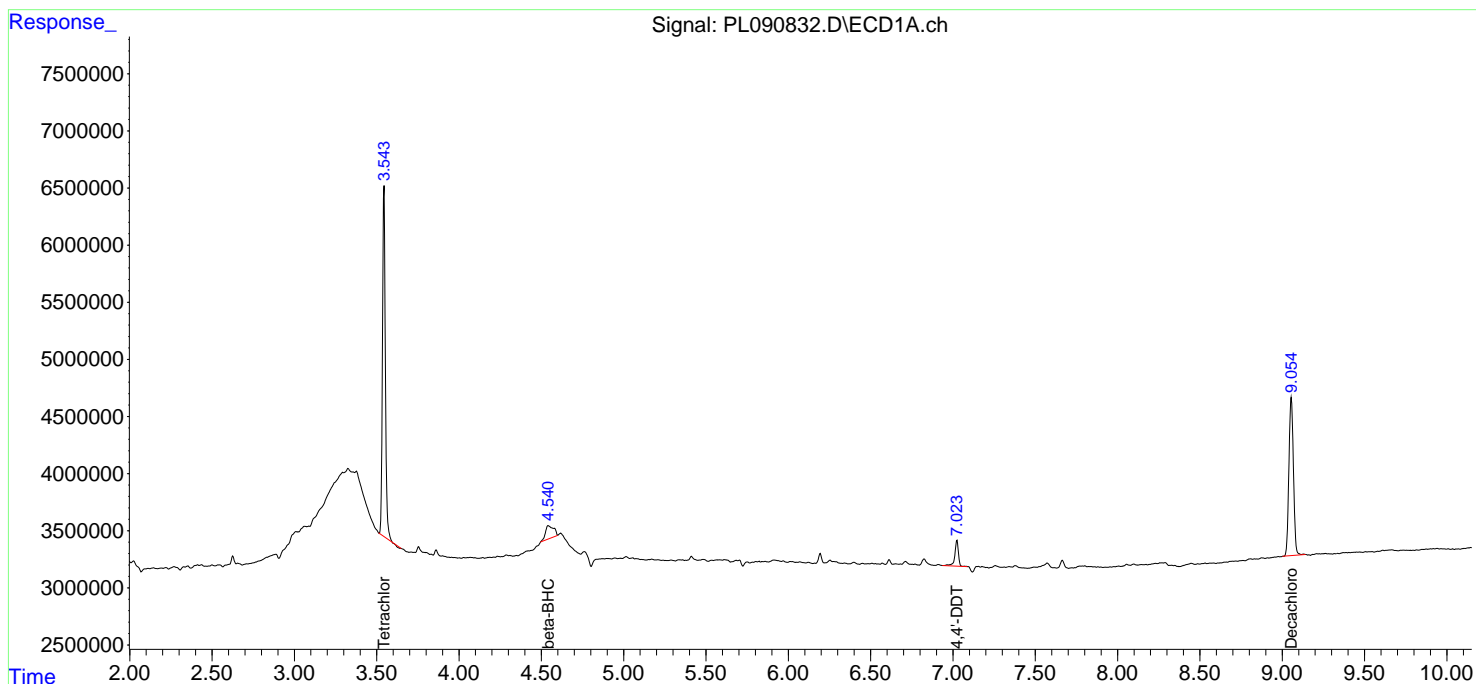
(f)=RT Delta > 1/2 Window (#)=Amounts differ by > 25% (m)=manual int.

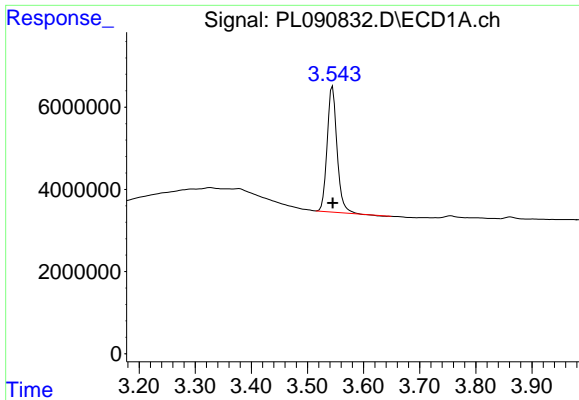
Data Path : Z:\pestpcbsrv\HPCHEM1\ECD_L\Data\PL080624\
 Data File : PL090832.D
 Signal(s) : Signal #1: ECD1A.ch Signal #2: ECD2B.ch
 Acq On : 06 Aug 2024 19:41
 Operator : AR\AJ
 Sample : P3474-04
 Misc :
 ALS Vial : 21 Sample Multiplier: 1

Instrument :
 ECD_L
 ClientSampleId :
 WC-B1-COMP

Integration File signal 1: autoint1.e
 Integration File signal 2: autoint2.e
 Quant Time: Aug 07 02:19:14 2024
 Quant Method : Z:\pestpcbsrv\HPCHEM1\ECD_L\methods\PL080524.M
 Quant Title : GC Extractables
 QLast Update : Tue Aug 06 10:55:36 2024
 Response via : Initial Calibration
 Integrator: ChemStation

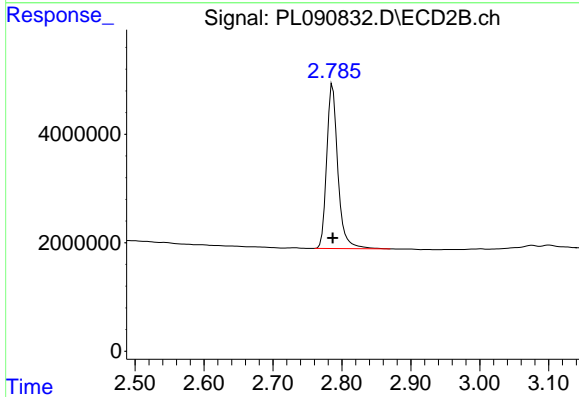
Volume Inj. : 1 µl
 Signal #1 Phase : ZB-MR2 Signal #2 Phase: ZB-MR1
 Signal #1 Info : 30M x 0.32mm x0.2 Signal #2 Info : 30M x 0.32mm x0.5µm



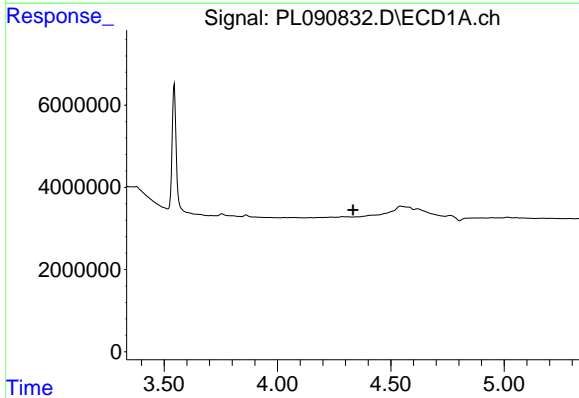


#1 Tetrachloro-m-xylene
 R.T.: 3.545 min
 Delta R.T.: 0.000 min
 Response: 37201802
 Conc: 19.21 ng/ml

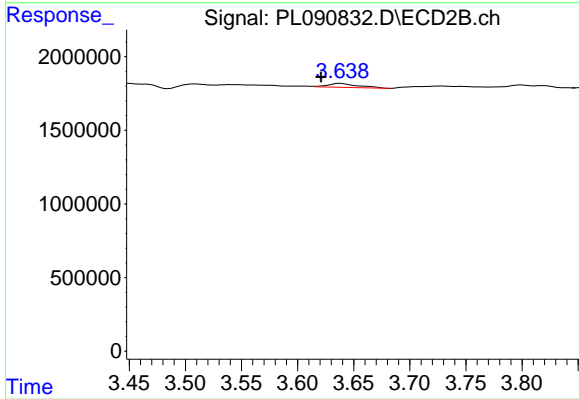
Instrument :
 ECD_L
 ClientSampleId :
 WC-B1-COMP



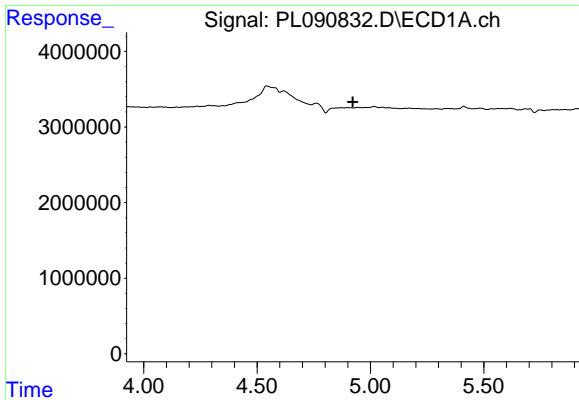
#1 Tetrachloro-m-xylene
 R.T.: 2.787 min
 Delta R.T.: 0.000 min
 Response: 34014316
 Conc: 19.68 ng/ml



#3 gamma-BHC (Lindane)
 R.T.: 0.000 min
 Exp R.T. : 4.333 min
 Response: 0
 Conc: N.D.



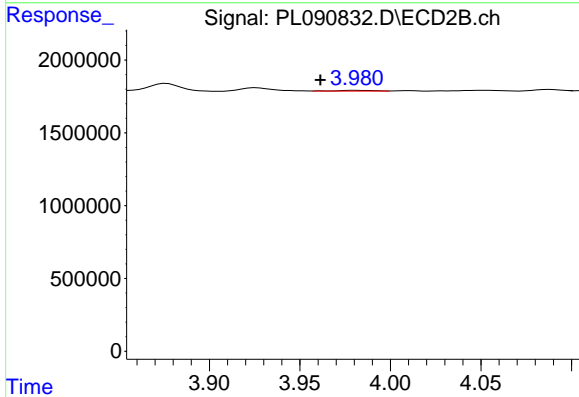
#3 gamma-BHC (Lindane)
 R.T.: 3.638 min
 Delta R.T.: 0.017 min
 Response: 490295
 Conc: 0.21 ng/ml



#4 Heptachlor

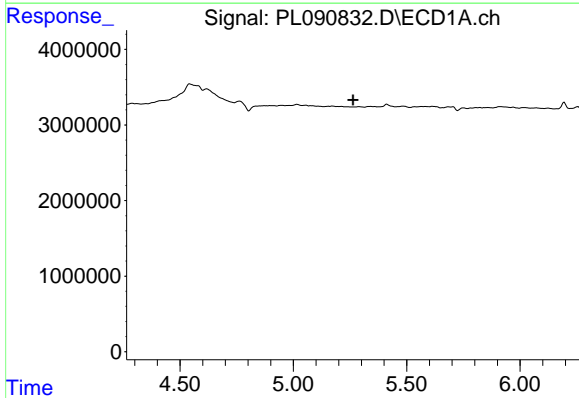
R.T.: 0.000 min
 Exp R.T. : 4.922 min
 Response: 0
 Conc: N.D.

Instrument :
 ECD_L
 ClientSampleId :
 WC-B1-COMP



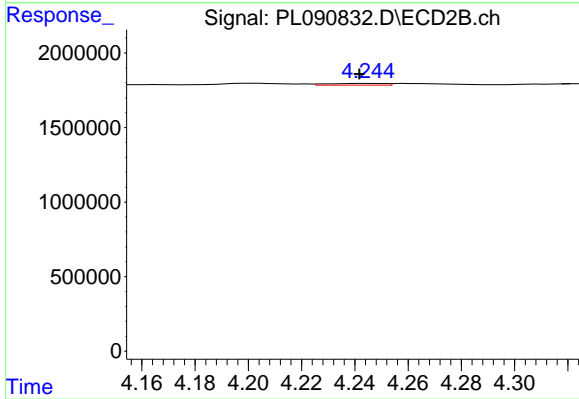
#4 Heptachlor

R.T.: 3.981 min
 Delta R.T.: 0.020 min
 Response: 77541
 Conc: 0.03 ng/ml



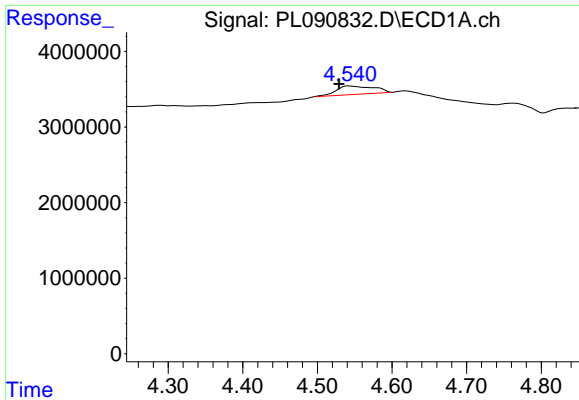
#5 Aldrin

R.T.: 0.000 min
 Exp R.T. : 5.264 min
 Response: 0
 Conc: N.D.



#5 Aldrin

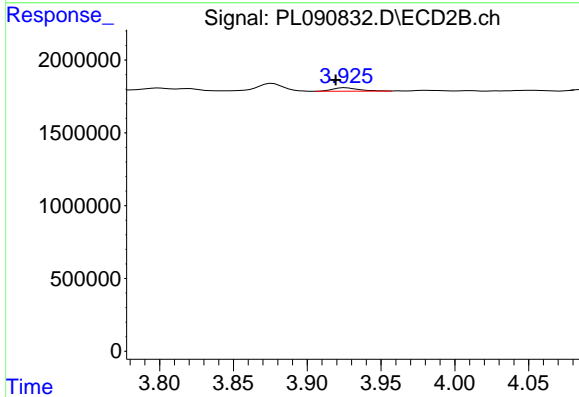
R.T.: 4.245 min
 Delta R.T.: 0.004 min
 Response: 175442
 Conc: 0.08 ng/ml



#6 beta-BHC

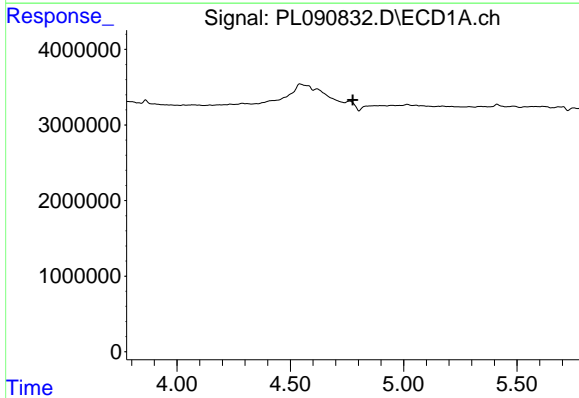
R.T.: 4.542 min
 Delta R.T.: 0.013 min
 Response: 3974881
 Conc: 3.16 ng/ml

Instrument :
 ECD_L
 ClientSampleId :
 WC-B1-COMP



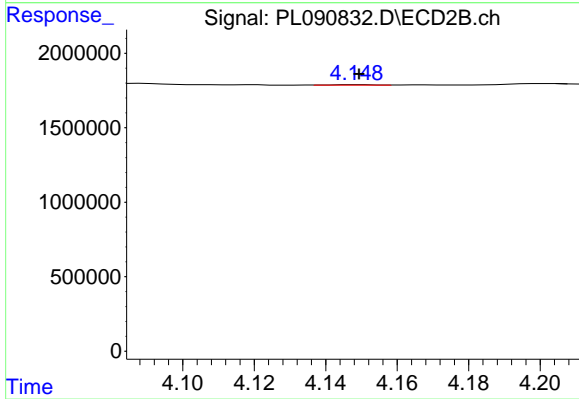
#6 beta-BHC

R.T.: 3.926 min
 Delta R.T.: 0.007 min
 Response: 296793
 Conc: 0.28 ng/ml



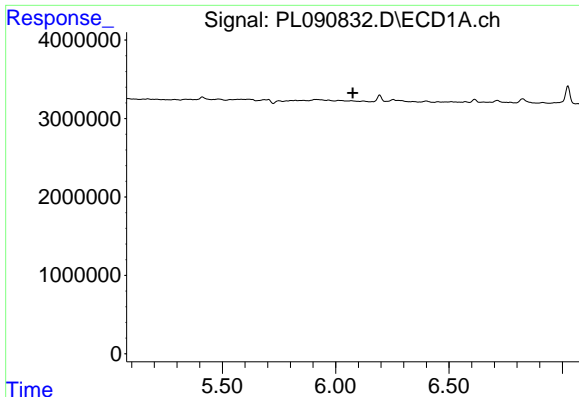
#7 delta-BHC

R.T.: 0.000 min
 Exp R.T. : 4.776 min
 Response: 0
 Conc: N.D.



#7 delta-BHC

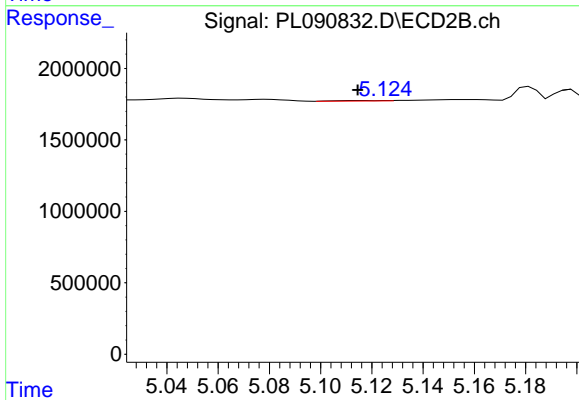
R.T.: 4.149 min
 Delta R.T.: 0.000 min
 Response: 26406
 Conc: 0.01 ng/ml



#9 Endosulfan I

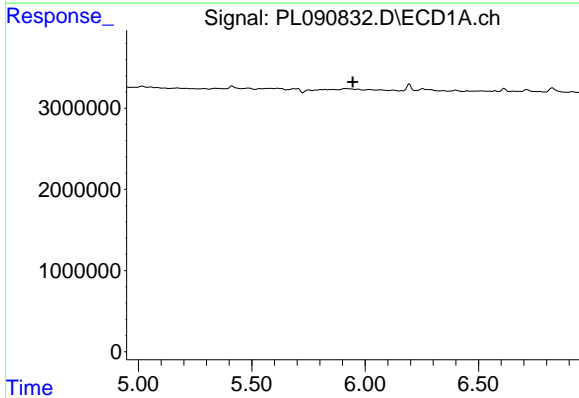
R.T.: 0.000 min
 Exp R.T.: 6.075 min
 Response: 0
 Conc: N.D.

Instrument :
 ECD_L
 ClientSampleId :
 WC-B1-COMP



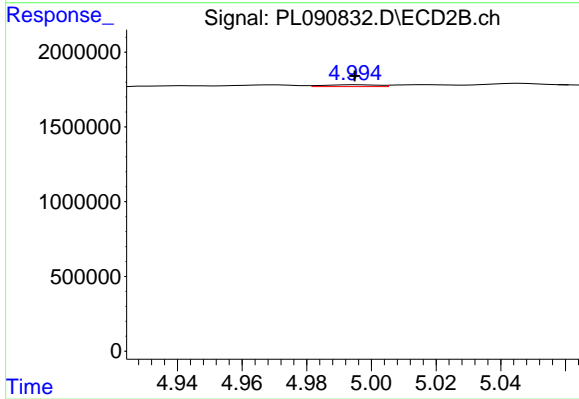
#9 Endosulfan I

R.T.: 5.113 min
 Delta R.T.: -0.002 min
 Response: 39846
 Conc: 0.02 ng/ml



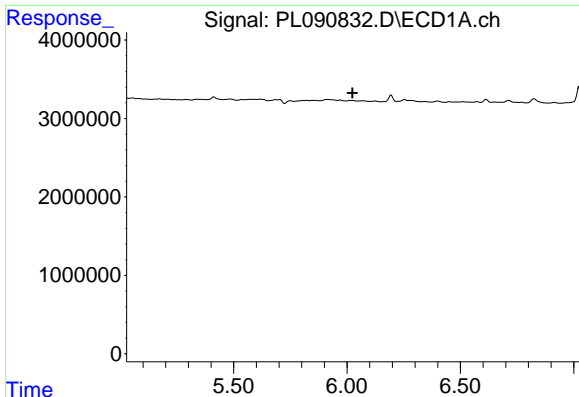
#10 gamma-Chlordane

R.T.: 0.000 min
 Exp R.T.: 5.945 min
 Response: 0
 Conc: N.D.



#10 gamma-Chlordane

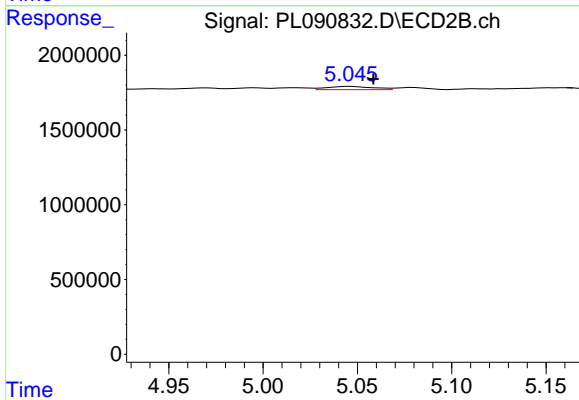
R.T.: 4.995 min
 Delta R.T.: 0.000 min
 Response: 146228
 Conc: 0.07 ng/ml



#11 alpha-Chlordane

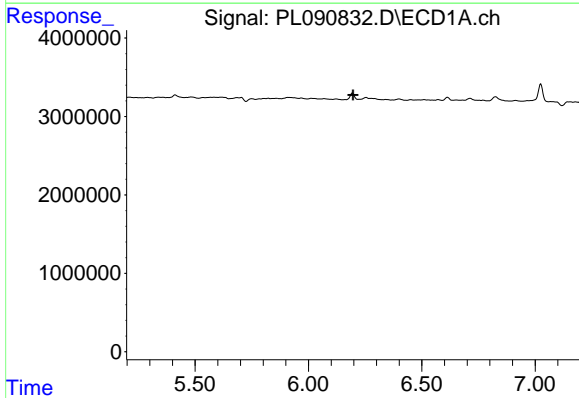
R.T.: 0.000 min
 Exp R.T.: 6.024 min
 Response: 0
 Conc: N.D.

Instrument :
 ECD_L
 ClientSampleId :
 WC-B1-COMP



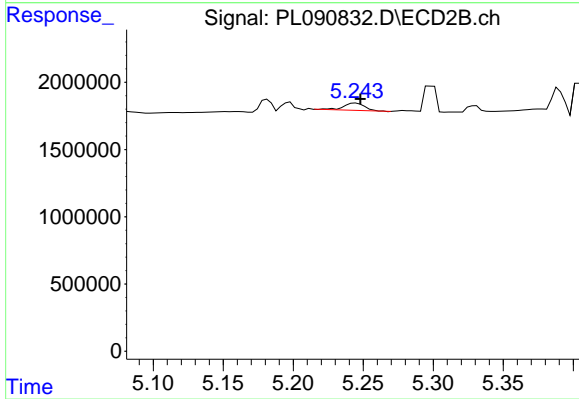
#11 alpha-Chlordane

R.T.: 5.047 min
 Delta R.T.: -0.012 min
 Response: 365700
 Conc: 0.17 ng/ml



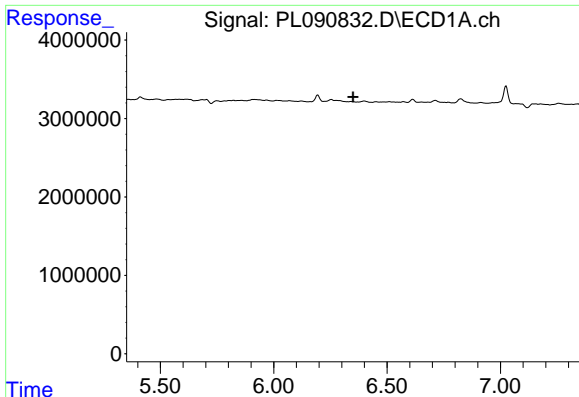
#12 4,4'-DDE

R.T.: 0.000 min
 Exp R.T.: 6.197 min
 Response: 0
 Conc: N.D.



#12 4,4'-DDE

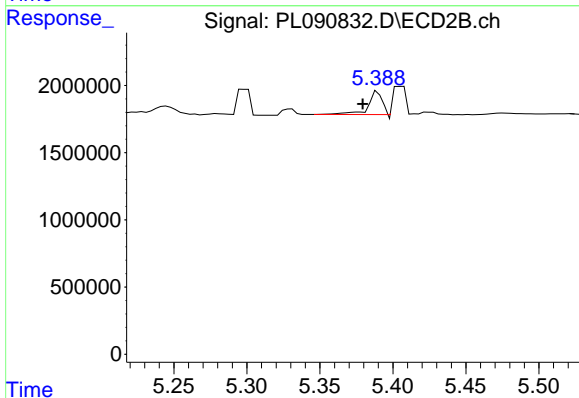
R.T.: 5.245 min
 Delta R.T.: -0.003 min
 Response: 569699
 Conc: 0.30 ng/ml



#13 Dieldrin

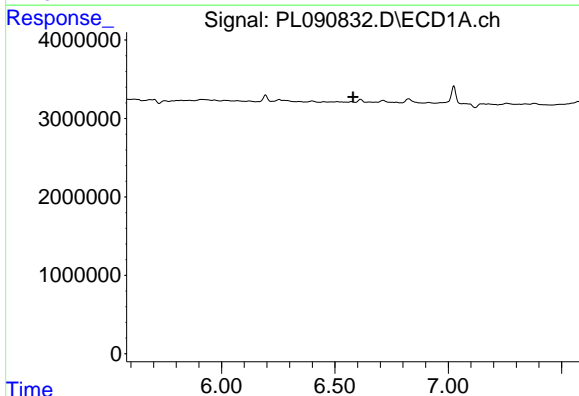
R.T.: 0.000 min
 Exp R.T. : 6.350 min
 Response: 0
 Conc: N.D.

Instrument :
 ECD_L
 ClientSampleId :
 WC-B1-COMP



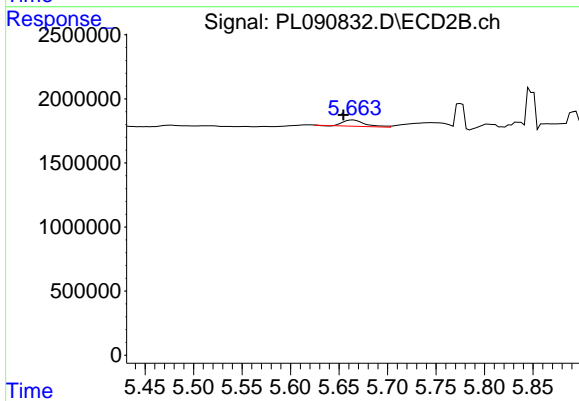
#13 Dieldrin

R.T.: 5.390 min
 Delta R.T.: 0.011 min
 Response: 1156301
 Conc: 0.56 ng/ml



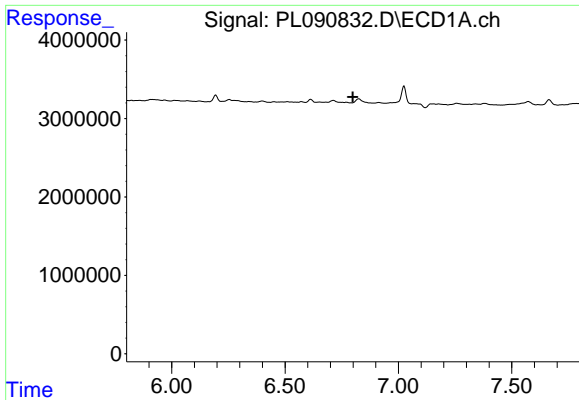
#14 Endrin

R.T.: 0.000 min
 Exp R.T. : 6.580 min
 Response: 0
 Conc: N.D.



#14 Endrin

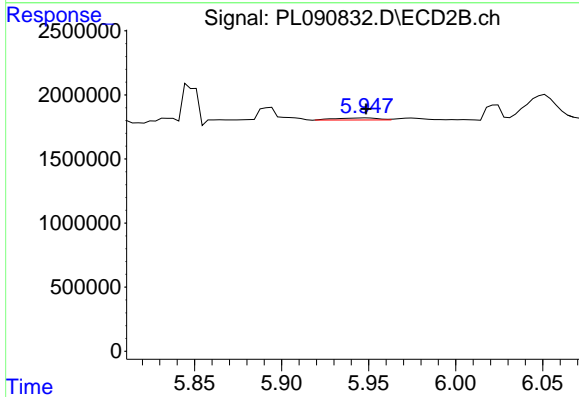
R.T.: 5.665 min
 Delta R.T.: 0.010 min
 Response: 777903
 Conc: 0.43 ng/ml



#15 Endosulfan II

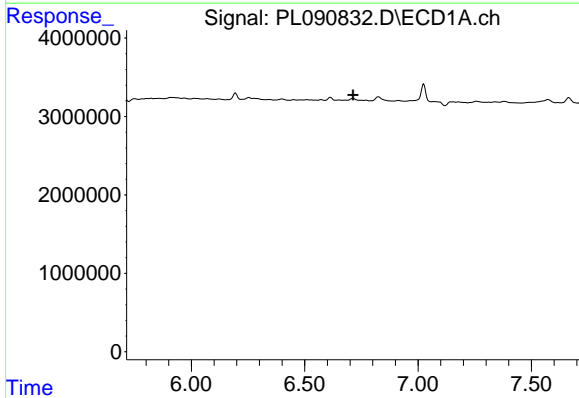
R.T.: 0.000 min
 Exp R.T.: 6.799 min
 Response: 0
 Conc: N.D.

Instrument :
 ECD_L
 ClientSampleId :
 WC-B1-COMP



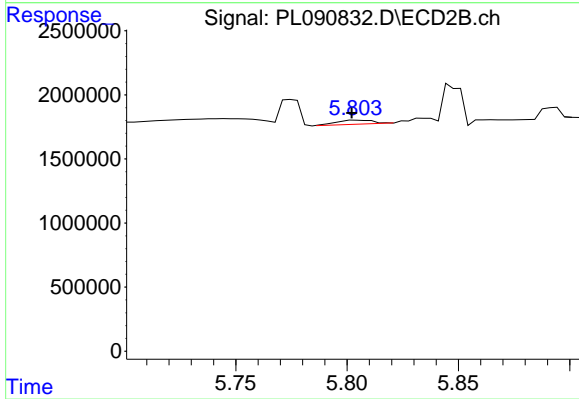
#15 Endosulfan II

R.T.: 5.949 min
 Delta R.T.: 0.000 min
 Response: 276841
 Conc: 0.15 ng/ml



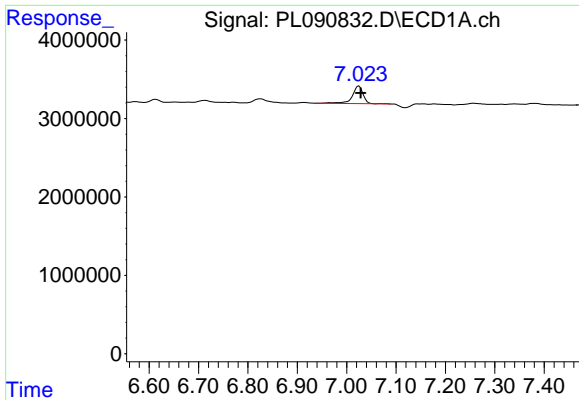
#16 4,4'-DDD

R.T.: 0.000 min
 Exp R.T.: 6.714 min
 Response: 0
 Conc: N.D.



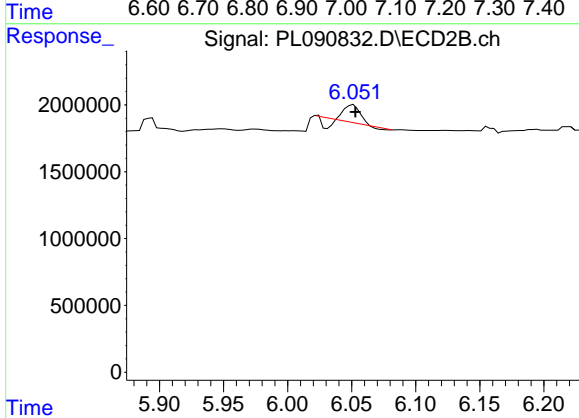
#16 4,4'-DDD

R.T.: 5.804 min
 Delta R.T.: 0.002 min
 Response: 355757
 Conc: 0.23 ng/ml

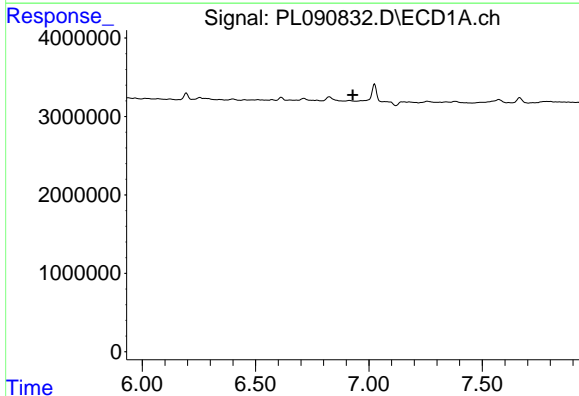


#17 4,4'-DDT
 R.T.: 7.025 min
 Delta R.T.: -0.004 min
 Response: 3440187
 Conc: 1.93 ng/ml

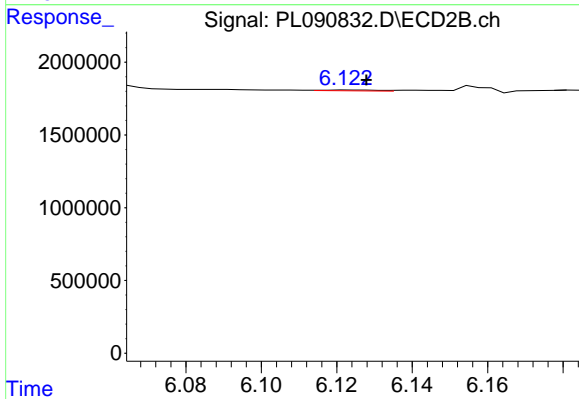
Instrument :
 ECD_L
 ClientSampleId :
 WC-B1-COMP



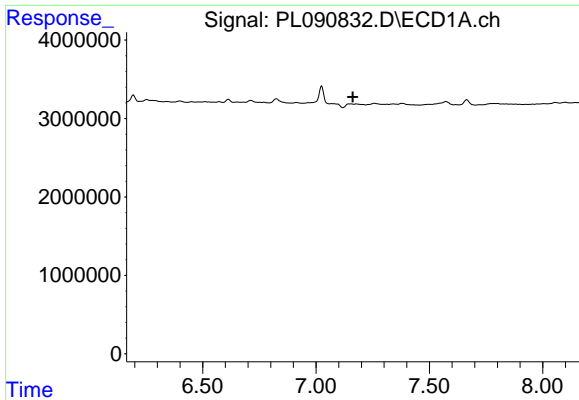
#17 4,4'-DDT
 R.T.: 6.051 min
 Delta R.T.: -0.001 min
 Response: 761263
 Conc: 0.46 ng/ml



#18 Endrin aldehyde
 R.T.: 0.000 min
 Exp R.T. : 6.929 min
 Response: 0
 Conc: N.D.



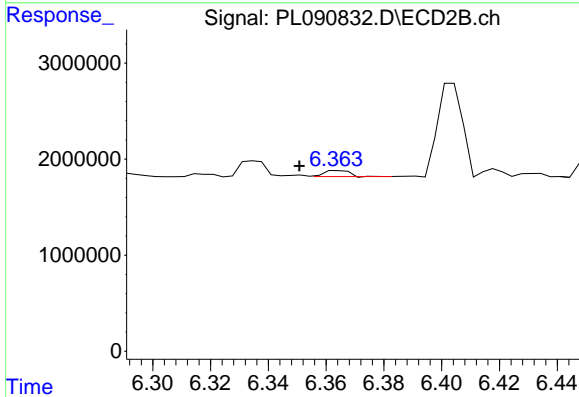
#18 Endrin aldehyde
 R.T.: 6.123 min
 Delta R.T.: -0.005 min
 Response: 60196
 Conc: 0.04 ng/ml



#19 Endosulfan Sulfate

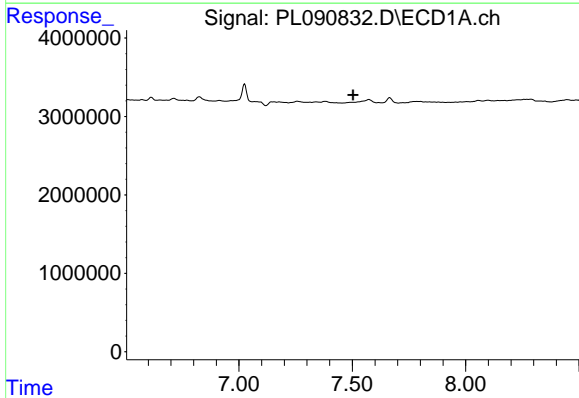
R.T.: 0.000 min
 Exp R.T. : 7.163 min
 Response: 0
 Conc: N.D.

Instrument :
 ECD_L
 ClientSampleId :
 WC-B1-COMP



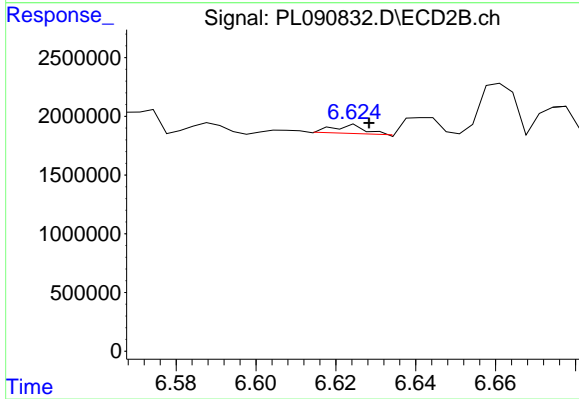
#19 Endosulfan Sulfate

R.T.: 6.365 min
 Delta R.T.: 0.014 min
 Response: 386950
 Conc: 0.22 ng/ml



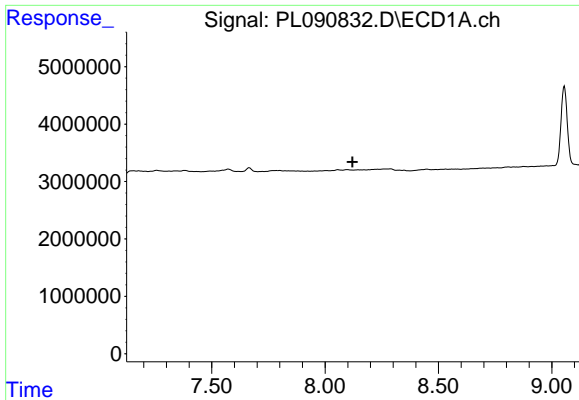
#20 Methoxychlor

R.T.: 0.000 min
 Exp R.T. : 7.504 min
 Response: 0
 Conc: N.D.



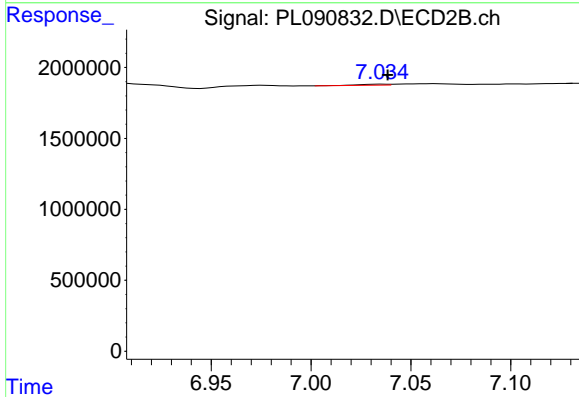
#20 Methoxychlor

R.T.: 6.625 min
 Delta R.T.: -0.003 min
 Response: 409577
 Conc: 0.44 ng/ml

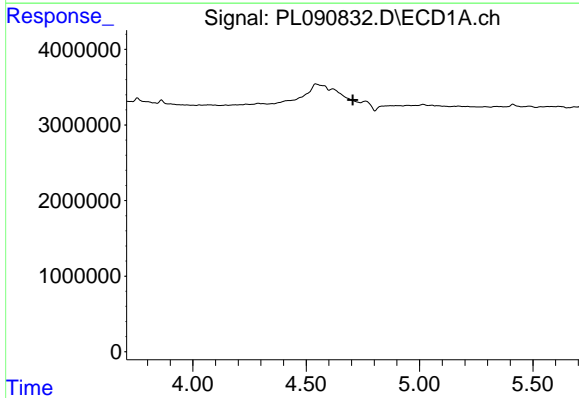


#22 Mirex
 R.T.: 0.000 min
 Exp R.T.: 8.121 min
 Response: 0
 Conc: N.D.

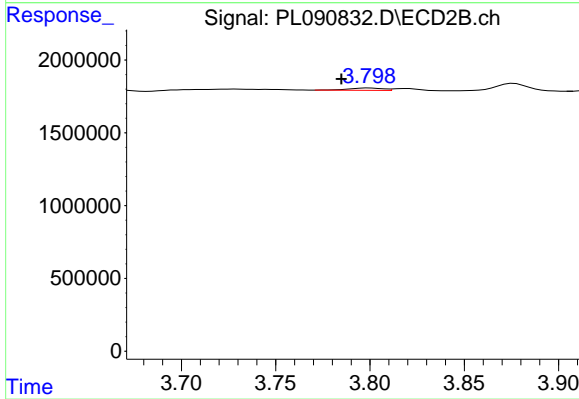
Instrument :
 ECD_L
 ClientSampleId :
 WC-B1-COMP



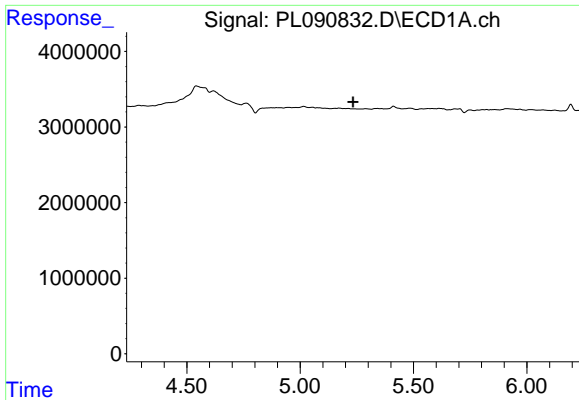
#22 Mirex
 R.T.: 7.036 min
 Delta R.T.: -0.002 min
 Response: 70021
 Conc: 0.04 ng/ml



#23 Chlordane-1
 R.T.: 0.000 min
 Exp R.T.: 4.705 min
 Response: 0
 Conc: N.D.



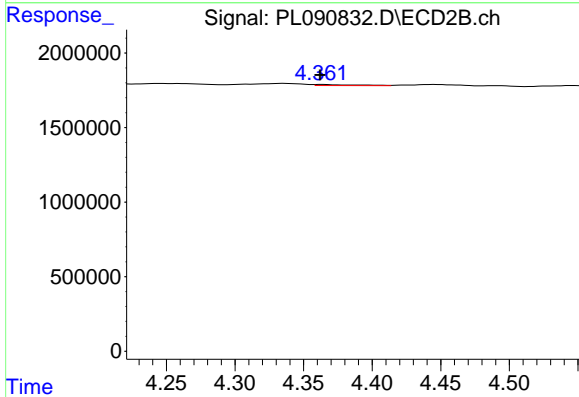
#23 Chlordane-1
 R.T.: 3.799 min
 Delta R.T.: 0.015 min
 Response: 204796
 Conc: 3.04 ng/ml



#24 Chlordane-2

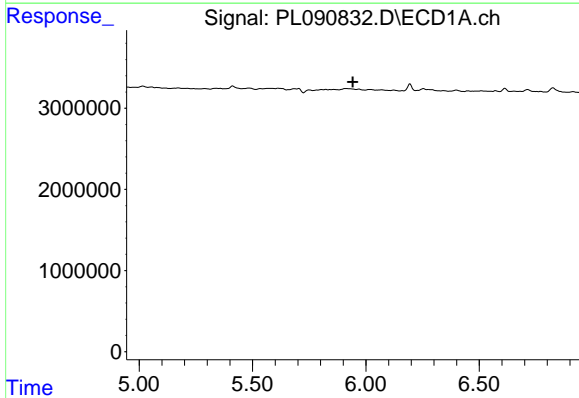
R.T.: 0.000 min
 Exp R.T.: 5.233 min
 Response: 0
 Conc: N.D.

Instrument :
 ECD_L
 ClientSampleId :
 WC-B1-COMP



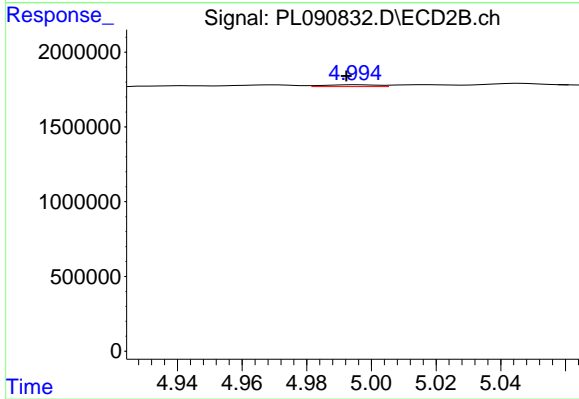
#24 Chlordane-2

R.T.: 4.364 min
 Delta R.T.: 0.002 min
 Response: 142354
 Conc: 1.71 ng/ml



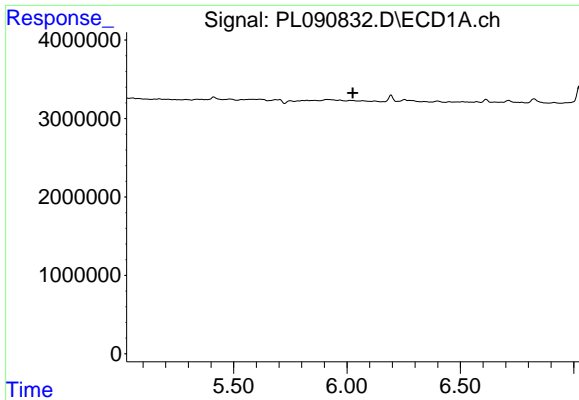
#25 Chlordane-3

R.T.: 0.000 min
 Exp R.T.: 5.943 min
 Response: 0
 Conc: N.D.



#25 Chlordane-3

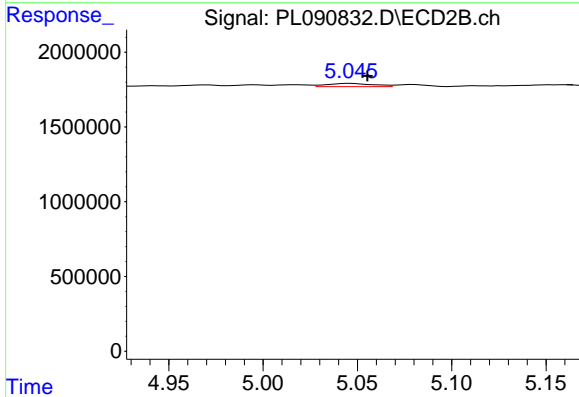
R.T.: 4.995 min
 Delta R.T.: 0.003 min
 Response: 146228
 Conc: 0.65 ng/ml



#26 Chlordane-4

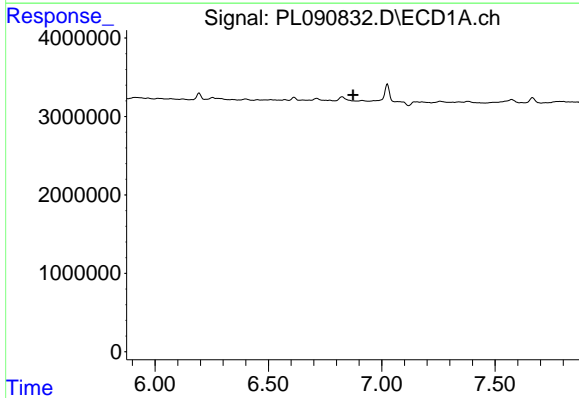
R.T.: 0.000 min
 Exp R.T. : 6.025 min
 Response: 0
 Conc: N.D.

Instrument :
 ECD_L
 ClientSampleId :
 WC-B1-COMP



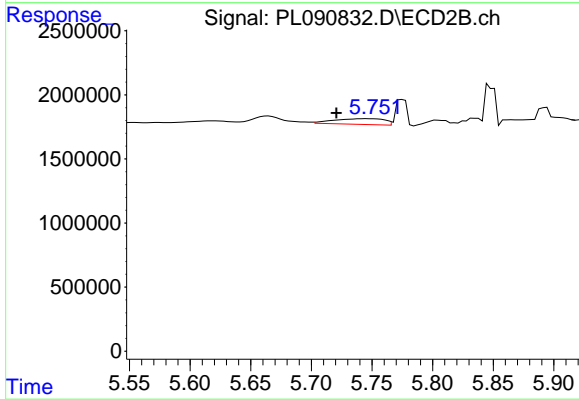
#26 Chlordane-4

R.T.: 5.047 min
 Delta R.T.: -0.009 min
 Response: 365700
 Conc: 1.71 ng/ml



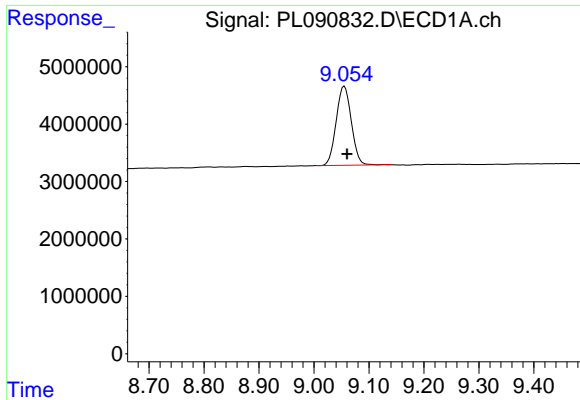
#27 Chlordane-5

R.T.: 0.000 min
 Exp R.T. : 6.873 min
 Response: 0
 Conc: N.D.



#27 Chlordane-5

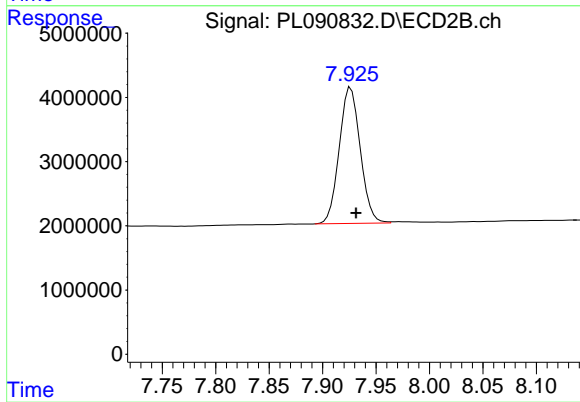
R.T.: 5.745 min
 Delta R.T.: 0.025 min
 Response: 1286300
 Conc: 19.25 ng/ml



#28 Decachlorobiphenyl

R.T.: 9.055 min
Delta R.T.: -0.005 min
Response: 26414818
Conc: 18.39 ng/ml

Instrument :
ECD_L
ClientSampleId :
WC-B1-COMP



#28 Decachlorobiphenyl

R.T.: 7.926 min
Delta R.T.: -0.005 min
Response: 29025707
Conc: 17.39 ng/ml