

Data Path : Z:\pestpcbsrv\HPCHEM1\ECD_L\Data\PL080719\
 Data File : PL051179.D
 Signal(s) : Signal #1: ECD1A.ch Signal #2: ECD2B.ch
 Acq On : 07 Aug 2019 21:27
 Operator : SM\AJ
 Sample : PB122054BSD
 Misc :
 ALS Vial : 5 Sample Multiplier: 1

Instrument :
 ECD_L
 ClientSampleId :

Integration File signal 1: autoint1.e
 Integration File signal 2: autoint2.e
 Quant Time: Aug 08 02:04:18 2019
 Quant Method : Z:\pestpcbsrv\HPCHEM1\ECD_L\methods\PL071719.M
 Quant Title : GC Extractables
 QLast Update : Fri Jul 19 01:19:13 2019
 Response via : Initial Calibration
 Integrator: ChemStation

Volume Inj. : 1 µl
 Signal #1 Phase : ZB-MR2 Signal #2 Phase: ZB-MR1
 Signal #1 Info : 30M x 0.32mm x0.2 Signal #2 Info : 30M x 0.32mm x0.5µm

	Compound	RT#1	RT#2	Resp#1	Resp#2	ng/ml	ng/ml

System Monitoring Compounds							
1)	SA Tetrachlo...	3.318	3.929	196.2E6	55826098	19.524	19.566
28)	SA Decachlor...	7.980	8.958	216.7E6	55014311	21.404	19.454
Target Compounds							
2)	A alpha-BHC	3.746	4.317	828.9E6	205.2E6	49.466	49.735
3)	MA gamma-BHC...	4.021	4.600	780.0E6	195.3E6	50.709	50.430
4)	MA Heptachlor	4.305	5.101	825.0E6	206.6E6	50.283	49.819
5)	MB Aldrin	4.543	5.403	816.5E6	200.5E6	52.709	53.219
6)	B beta-BHC	4.276	4.776	327.1E6	90605110	49.895	52.407
7)	B delta-BHC	4.469	4.990	707.9E6	166.2E6	43.142	42.981
8)	Heptachlo...	4.979	5.790	749.3E6	186.5E6	50.721	48.750
9)	A Endosulfan I	5.310	6.145	719.5E6	175.9E6	49.470	51.161
10)	B gamma-Chl...	5.201	6.024	788.3E6	191.2E6	49.945	51.745
11)	B alpha-Chl...	5.257	6.096	757.4E6	188.0E6	49.643	51.285
12)	B 4,4'-DDE	5.425	6.256	752.1E6	189.5E6	50.188	52.586
13)	MA Dieldrin	5.548	6.401	777.2E6	185.0E6	50.155	52.248
14)	MA Endrin	5.801	6.618	639.4E6	139.5E6	43.435	44.991
15)	B Endosulfa...	6.075	6.831	663.8E6	159.2E6	47.428	50.091
16)	A 4,4'-DDD	5.935	6.746	628.3E6	145.1E6	52.427	54.479
17)	MA 4,4'-DDT	6.169	7.043	567.2E6	133.2E6	45.792	49.353
18)	B Endrin al...	6.242	6.955	560.1E6	133.2E6	48.555	49.014
19)	B Endosulfa...	6.454	7.178	634.3E6	155.2E6	49.792	53.726
20)	A Methoxychlor	6.714	7.504	281.8E6	70221150	45.164	47.858
21)	B Endrin ke...	6.935	7.646	728.1E6	167.0E6	53.234	57.753
22)	Mirex	7.109	8.094	482.3E6	117.9E6	49.188	51.326
24)	Chlordane-2	0.000	5.403f	0	200.5E6	N.D.	1707.476 #
25)	Chlordane-3	5.201	6.024	788.3E6	191.2E6	563.156	397.550 #
26)	Chlordane-4	5.257	6.096	757.4E6	188.0E6	574.196	323.567 #
27)	Chlordane-5	6.075	0.000	663.8E6	0	1306.761	N.D. #

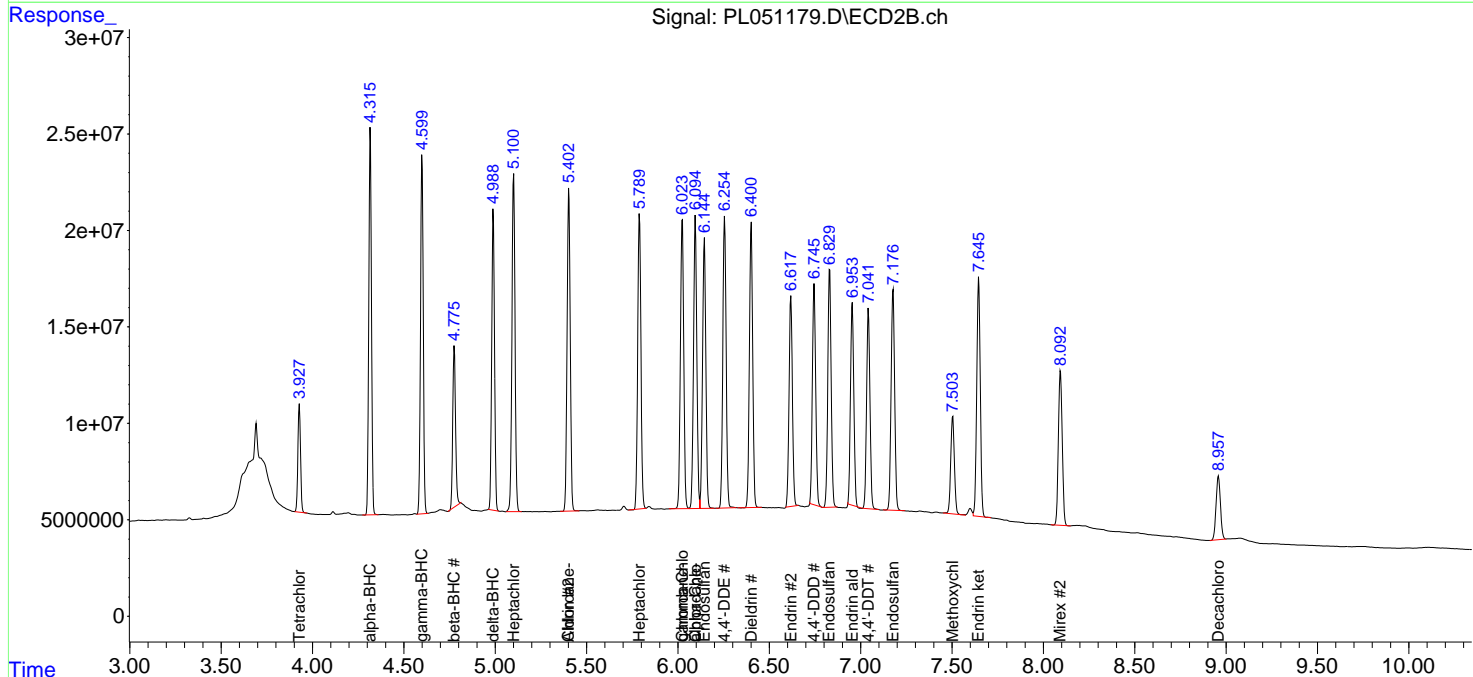
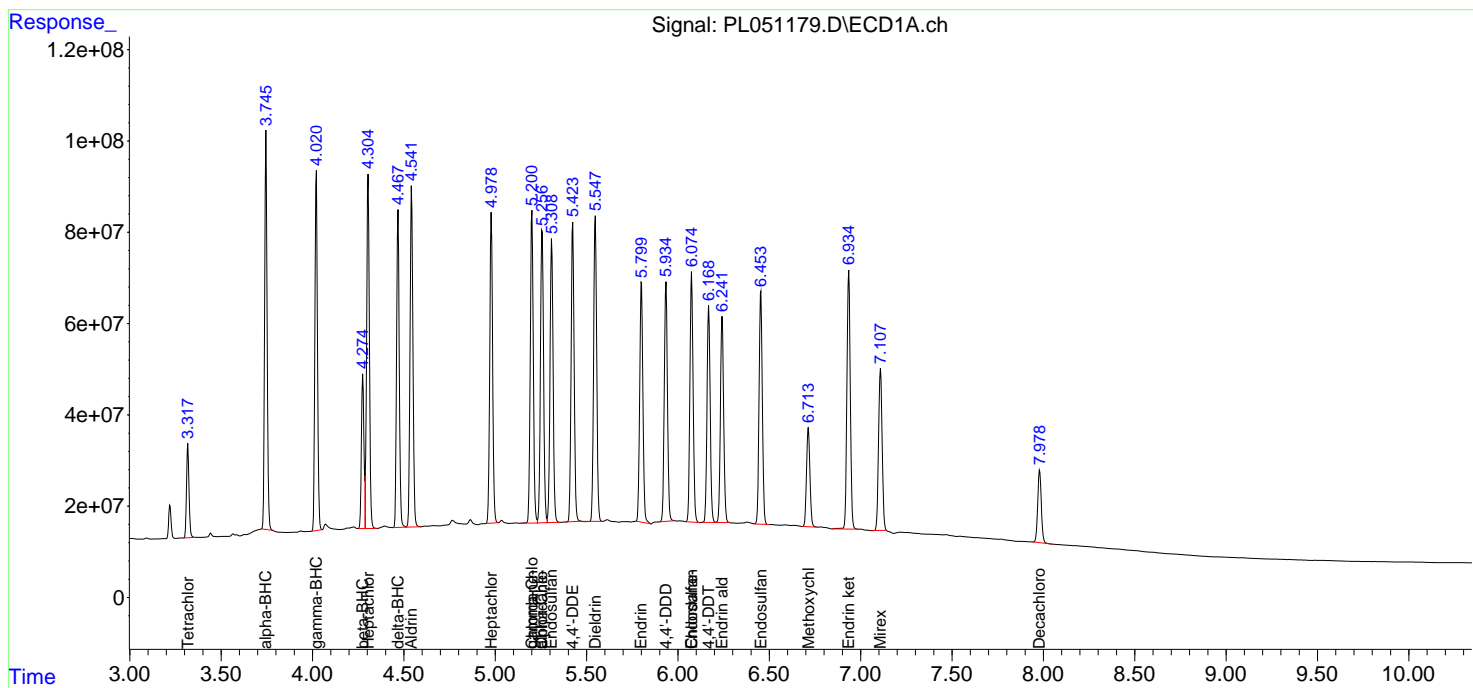
(f)=RT Delta > 1/2 Window (#)=Amounts differ by > 25% (m)=manual int.

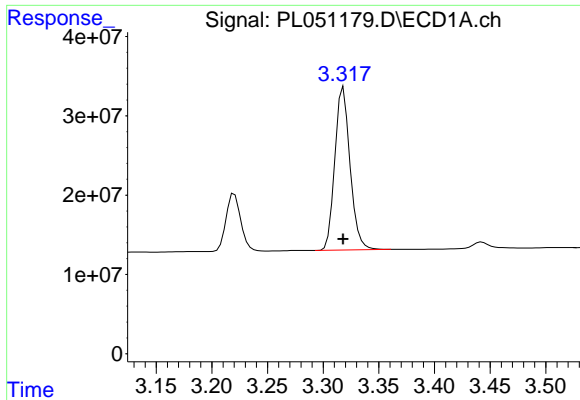
Data Path : Z:\pestpcbsrv\HPCHEM1\ECD_L\Data\PL080719\
 Data File : PL051179.D
 Signal(s) : Signal #1: ECD1A.ch Signal #2: ECD2B.ch
 Acq On : 07 Aug 2019 21:27
 Operator : SM\AJ
 Sample : PB122054BSD
 Misc :
 ALS Vial : 5 Sample Multiplier: 1

Instrument :
 ECD_L
 ClientSampled :

Integration File signal 1: autoint1.e
 Integration File signal 2: autoint2.e
 Quant Time: Aug 08 02:04:18 2019
 Quant Method : Z:\pestpcbsrv\HPCHEM1\ECD_L\methods\PL071719.M
 Quant Title : GC Extractables
 QLast Update : Fri Jul 19 01:19:13 2019
 Response via : Initial Calibration
 Integrator: ChemStation

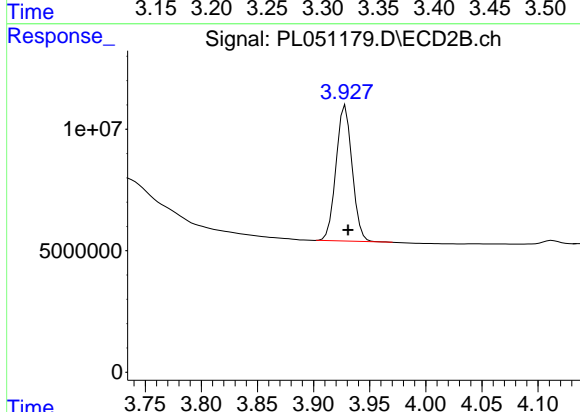
Volume Inj. : 1 µl
 Signal #1 Phase : ZB-MR2 Signal #2 Phase: ZB-MR1
 Signal #1 Info : 30M x 0.32mm x0.2 Signal #2 Info : 30M x 0.32mm x0.5µm



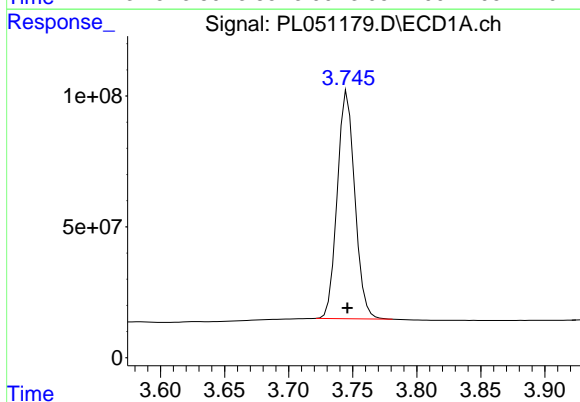


#1 Tetrachloro-m-xylene
 R.T.: 3.318 min
 Delta R.T.: 0.000 min
 Response: 196177312
 Conc: 19.52 ng/ml

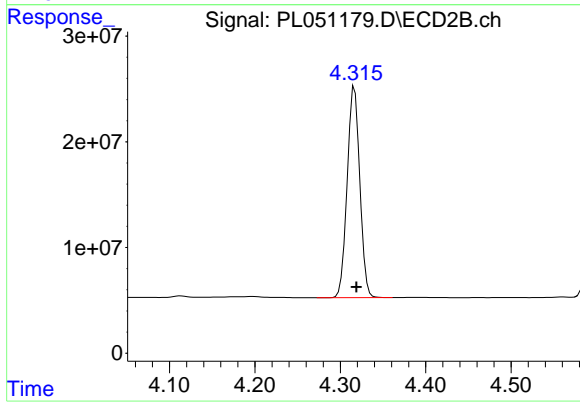
Instrument :
 ECD_L
 ClientSampled :



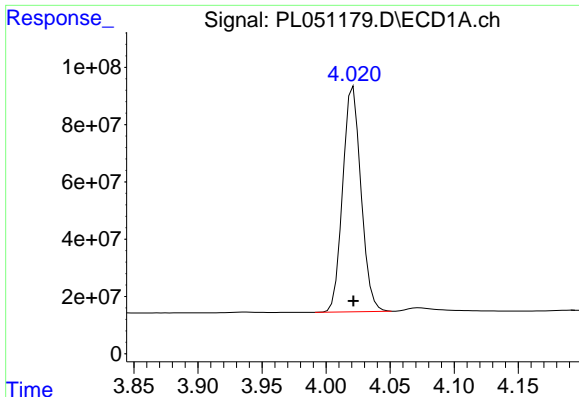
#1 Tetrachloro-m-xylene
 R.T.: 3.929 min
 Delta R.T.: -0.002 min
 Response: 55826098
 Conc: 19.57 ng/ml



#2 alpha-BHC
 R.T.: 3.746 min
 Delta R.T.: 0.000 min
 Response: 828935041
 Conc: 49.47 ng/ml

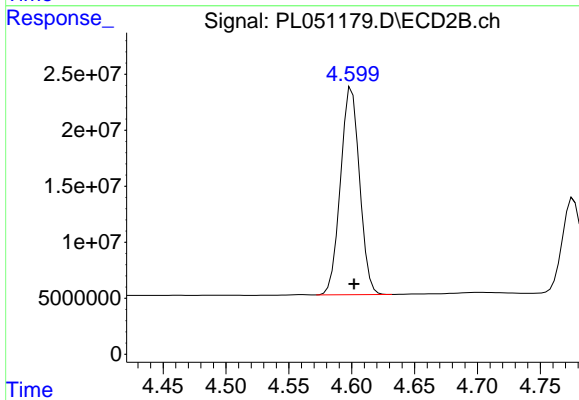


#2 alpha-BHC
 R.T.: 4.317 min
 Delta R.T.: -0.002 min
 Response: 205207296
 Conc: 49.74 ng/ml

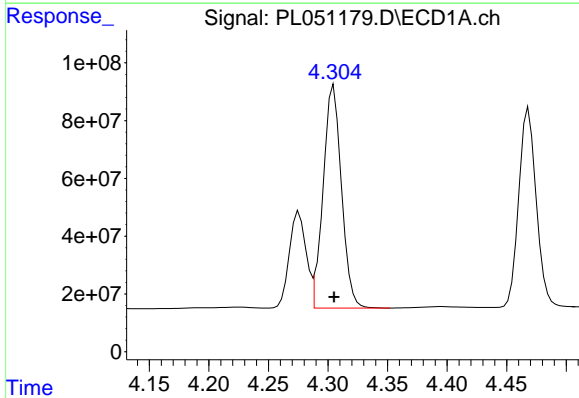


#3 gamma-BHC (Lindane)
 R.T.: 4.021 min
 Delta R.T.: 0.000 min
 Response: 779985278
 Conc: 50.71 ng/ml

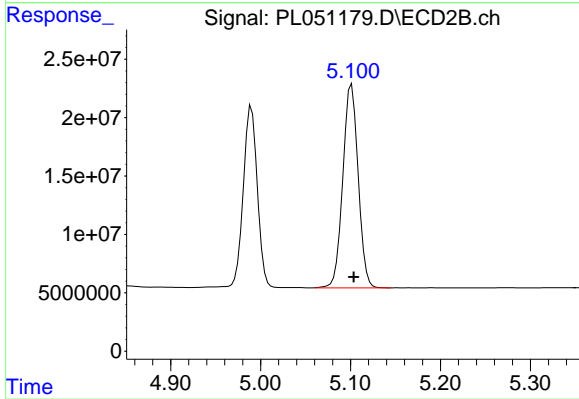
Instrument :
 ECD_L
 ClientSampled :



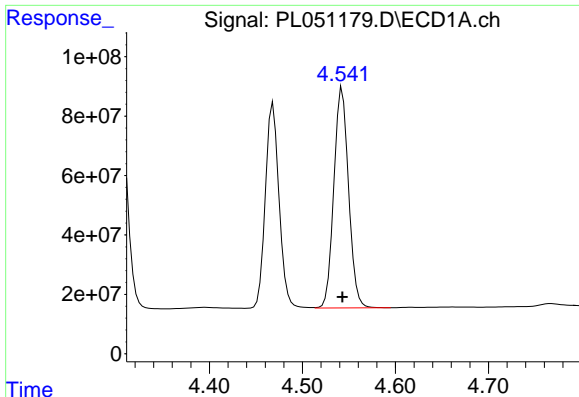
#3 gamma-BHC (Lindane)
 R.T.: 4.600 min
 Delta R.T.: -0.002 min
 Response: 195325483
 Conc: 50.43 ng/ml



#4 Heptachlor
 R.T.: 4.305 min
 Delta R.T.: 0.000 min
 Response: 825031505
 Conc: 50.28 ng/ml



#4 Heptachlor
 R.T.: 5.101 min
 Delta R.T.: -0.002 min
 Response: 206582611
 Conc: 49.82 ng/ml



#5 Aldrin

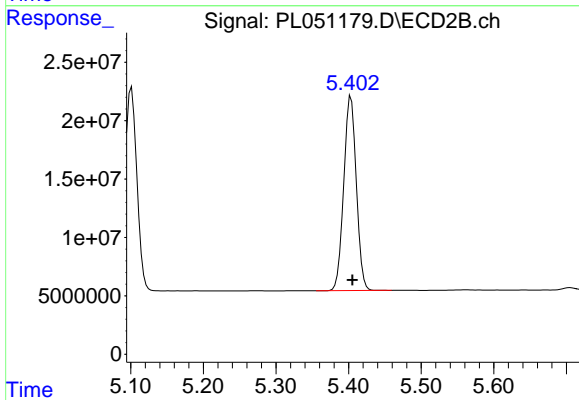
R.T.: 4.543 min

Delta R.T.: 0.000 min

Response: 816544801

Conc: 52.71 ng/ml

Instrument :
ECD_L
ClientSampled :



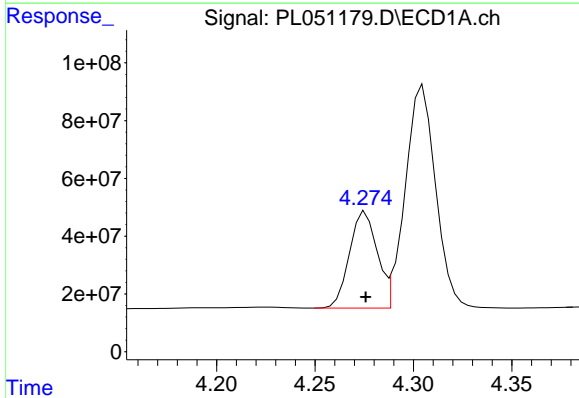
#5 Aldrin

R.T.: 5.403 min

Delta R.T.: -0.002 min

Response: 200547244

Conc: 53.22 ng/ml



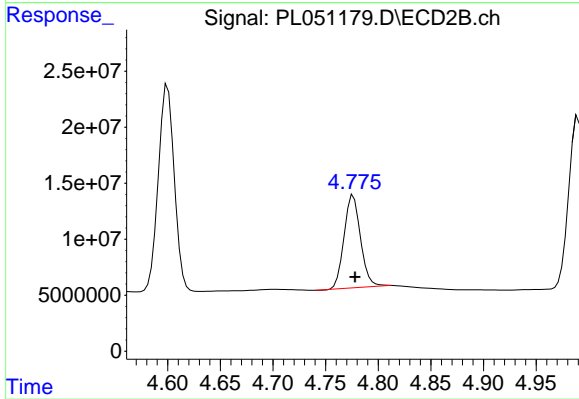
#6 beta-BHC

R.T.: 4.276 min

Delta R.T.: 0.000 min

Response: 327106150

Conc: 49.90 ng/ml



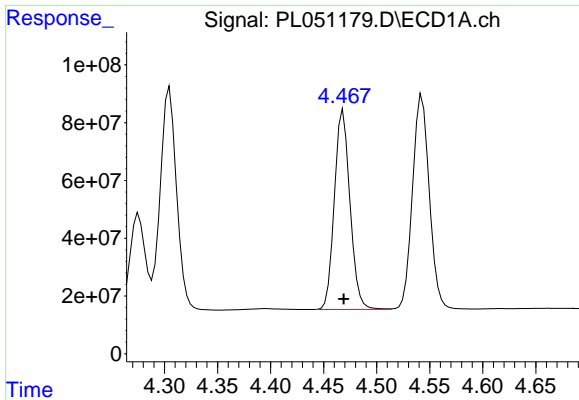
#6 beta-BHC

R.T.: 4.776 min

Delta R.T.: -0.002 min

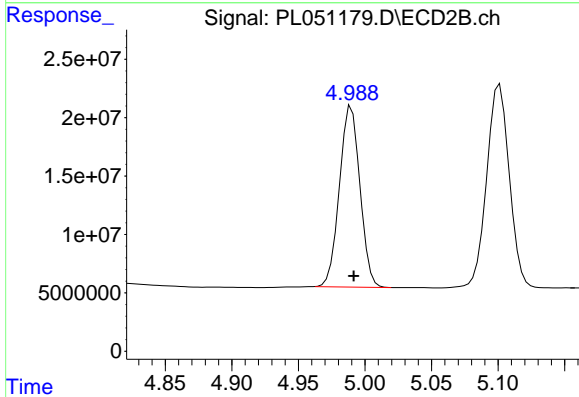
Response: 90605110

Conc: 52.41 ng/ml

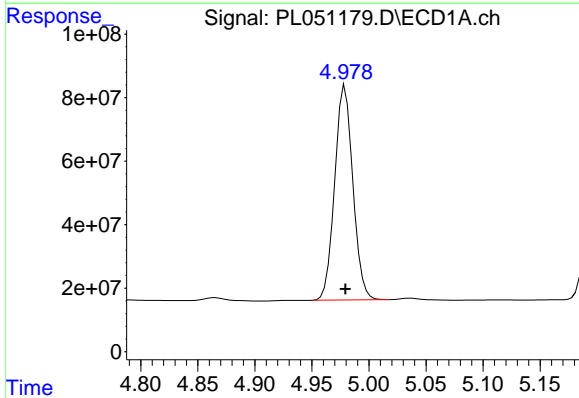


#7 delta-BHC
 R.T.: 4.469 min
 Delta R.T.: 0.000 min
 Response: 707901570
 Conc: 43.14 ng/ml

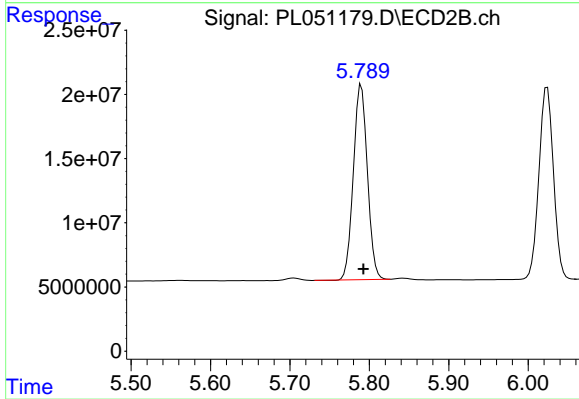
Instrument :
 ECD_L
 ClientSampleId :



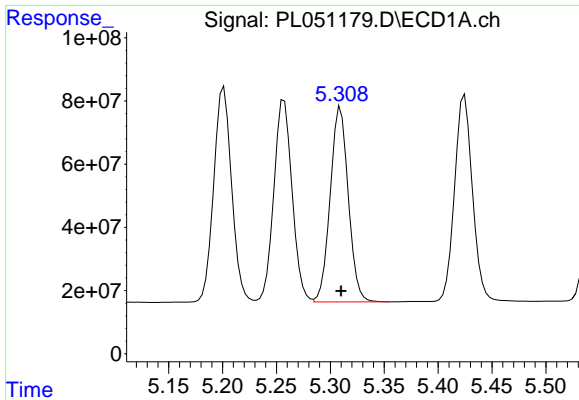
#7 delta-BHC
 R.T.: 4.990 min
 Delta R.T.: -0.002 min
 Response: 166234010
 Conc: 42.98 ng/ml



#8 Heptachlor epoxide
 R.T.: 4.979 min
 Delta R.T.: 0.000 min
 Response: 749335210
 Conc: 50.72 ng/ml

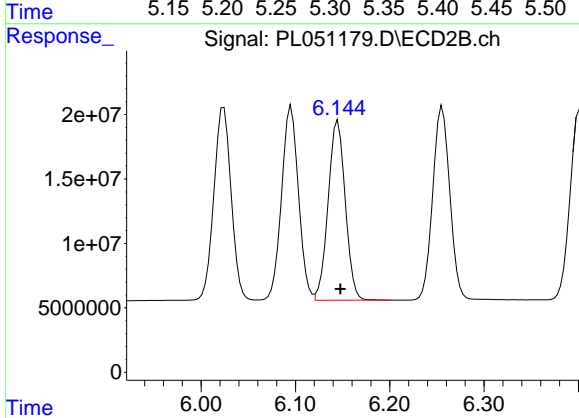


#8 Heptachlor epoxide
 R.T.: 5.790 min
 Delta R.T.: -0.003 min
 Response: 186458296
 Conc: 48.75 ng/ml

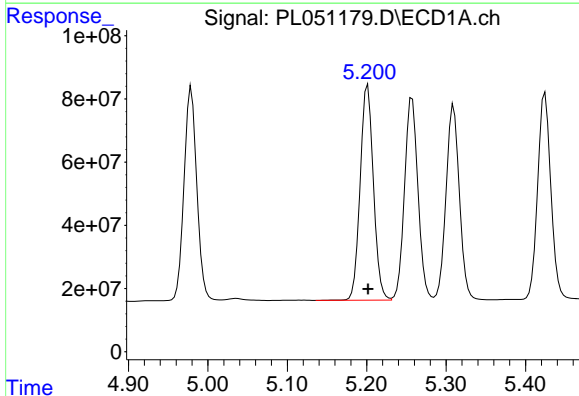


#9 Endosulfan I
 R.T.: 5.310 min
 Delta R.T.: 0.000 min
 Response: 719490740
 Conc: 49.47 ng/ml

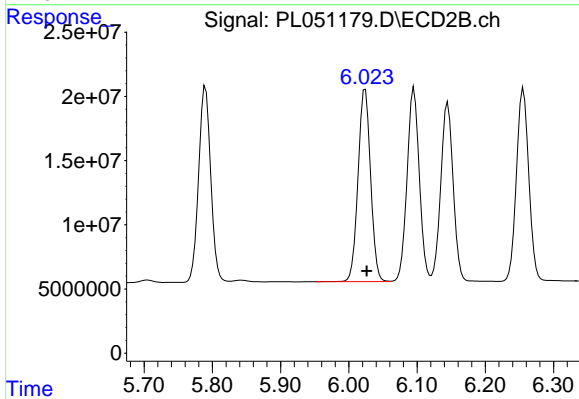
Instrument :
 ECD_L
 ClientSampled :



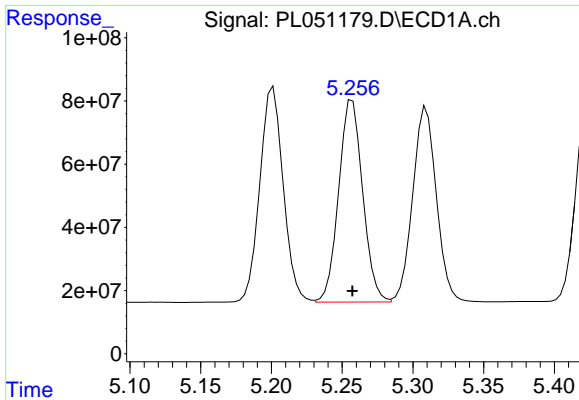
#9 Endosulfan I
 R.T.: 6.145 min
 Delta R.T.: -0.003 min
 Response: 175938144
 Conc: 51.16 ng/ml



#10 gamma-Chlordane
 R.T.: 5.201 min
 Delta R.T.: 0.000 min
 Response: 788299073
 Conc: 49.95 ng/ml

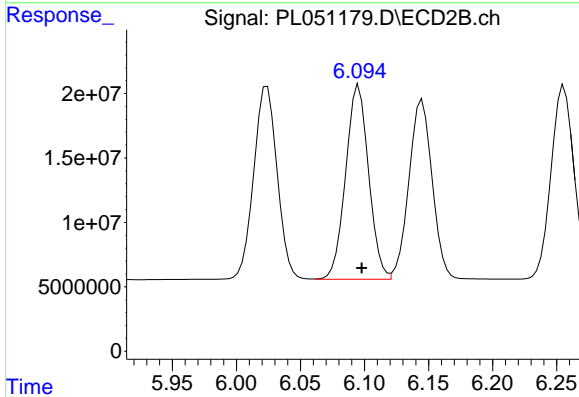


#10 gamma-Chlordane
 R.T.: 6.024 min
 Delta R.T.: -0.002 min
 Response: 191213569
 Conc: 51.75 ng/ml

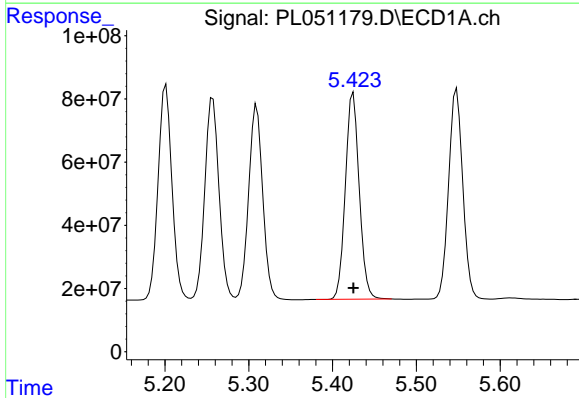


#11 alpha-Chlordane
 R.T.: 5.257 min
 Delta R.T.: 0.000 min
 Response: 757352189
 Conc: 49.64 ng/ml

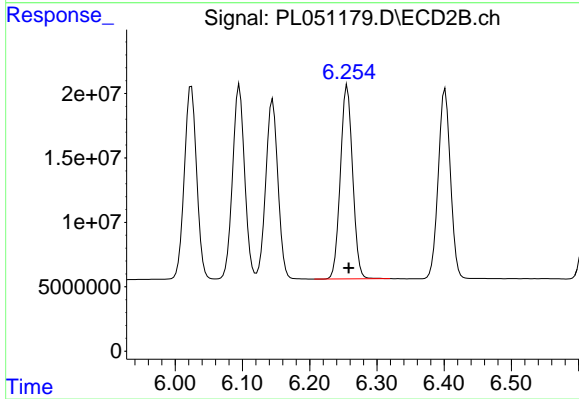
Instrument :
 ECD_L
 ClientSampled :



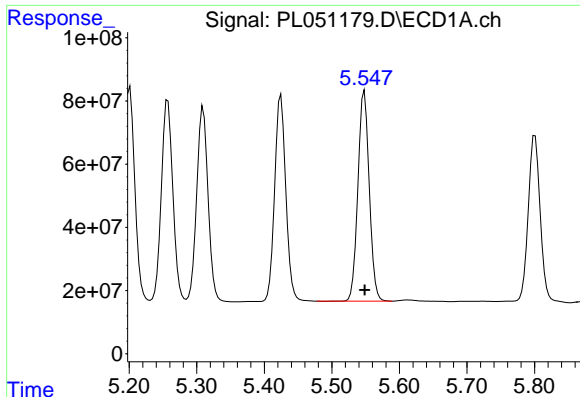
#11 alpha-Chlordane
 R.T.: 6.096 min
 Delta R.T.: -0.002 min
 Response: 187966148
 Conc: 51.28 ng/ml



#12 4,4'-DDE
 R.T.: 5.425 min
 Delta R.T.: 0.000 min
 Response: 752109241
 Conc: 50.19 ng/ml



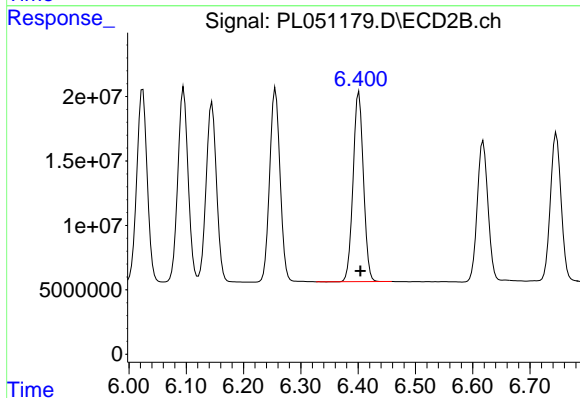
#12 4,4'-DDE
 R.T.: 6.256 min
 Delta R.T.: -0.002 min
 Response: 189487940
 Conc: 52.59 ng/ml



#13 Dieldrin

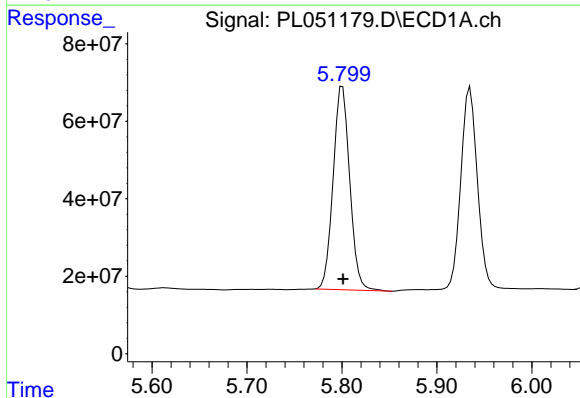
R.T.: 5.548 min
 Delta R.T.: 0.000 min
 Response: 777240888
 Conc: 50.16 ng/ml

Instrument :
 ECD_L
 ClientSampled :



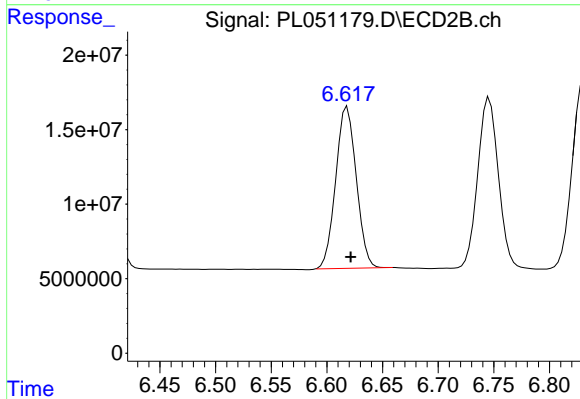
#13 Dieldrin

R.T.: 6.401 min
 Delta R.T.: -0.002 min
 Response: 185017122
 Conc: 52.25 ng/ml



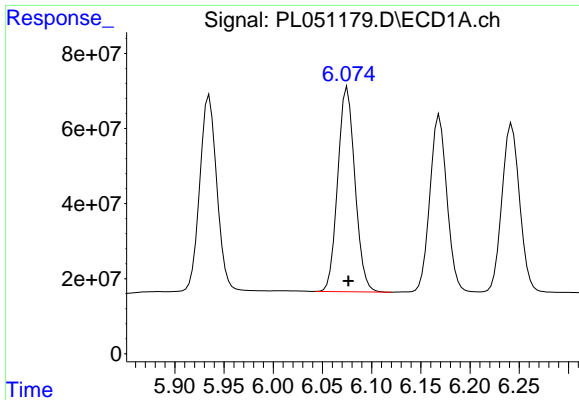
#14 Endrin

R.T.: 5.801 min
 Delta R.T.: 0.000 min
 Response: 639387240
 Conc: 43.44 ng/ml



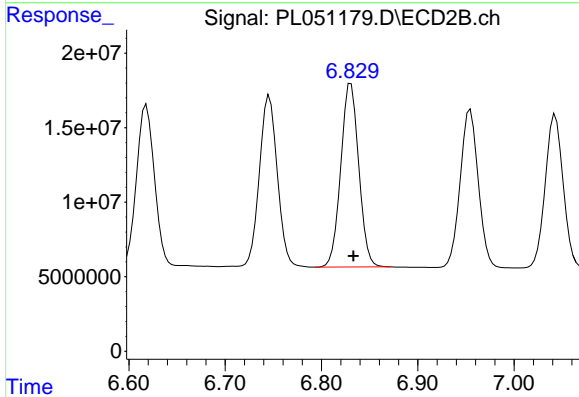
#14 Endrin

R.T.: 6.618 min
 Delta R.T.: -0.003 min
 Response: 139535412
 Conc: 44.99 ng/ml

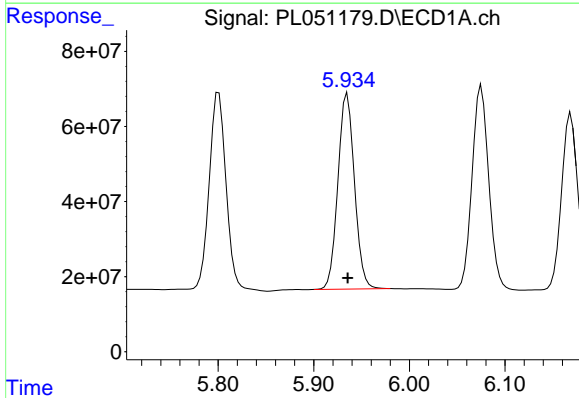


#15 Endosulfan II
 R.T.: 6.075 min
 Delta R.T.: 0.000 min
 Response: 663752146
 Conc: 47.43 ng/ml

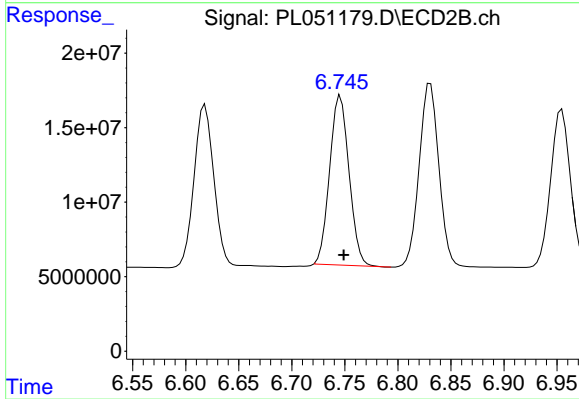
Instrument :
 ECD_L
 ClientSampleId :



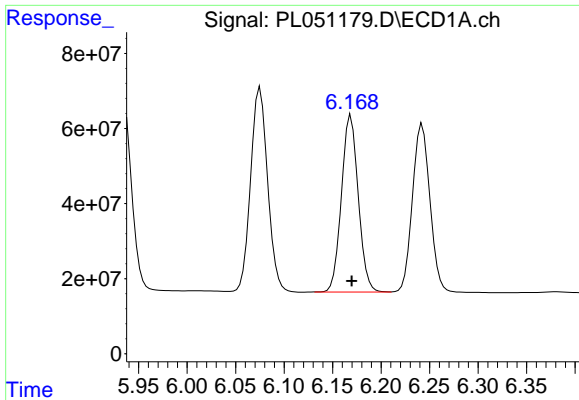
#15 Endosulfan II
 R.T.: 6.831 min
 Delta R.T.: -0.003 min
 Response: 159248298
 Conc: 50.09 ng/ml



#16 4,4'-DDD
 R.T.: 5.935 min
 Delta R.T.: 0.000 min
 Response: 628280832
 Conc: 52.43 ng/ml

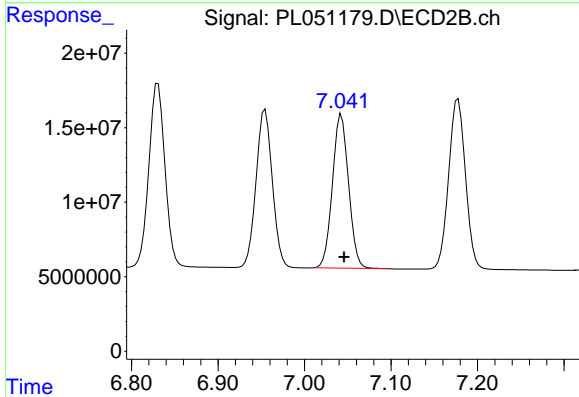


#16 4,4'-DDD
 R.T.: 6.746 min
 Delta R.T.: -0.003 min
 Response: 145072584
 Conc: 54.48 ng/ml

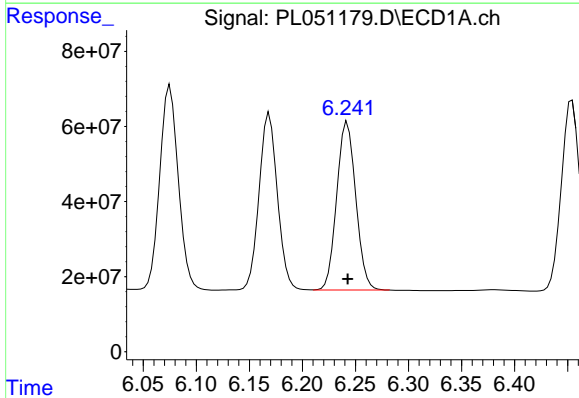


#17 4,4'-DDT
 R.T.: 6.169 min
 Delta R.T.: 0.000 min
 Response: 567171584
 Conc: 45.79 ng/ml

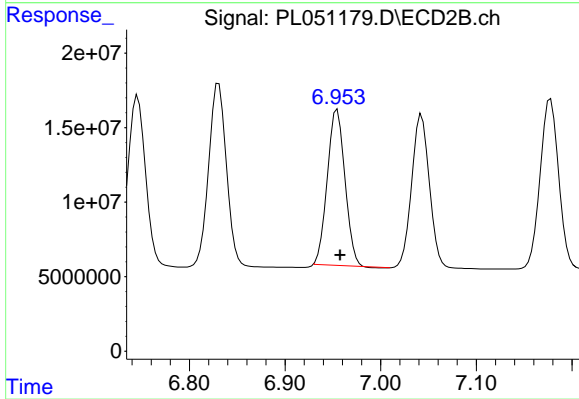
Instrument :
 ECD_L
 ClientSampleId :



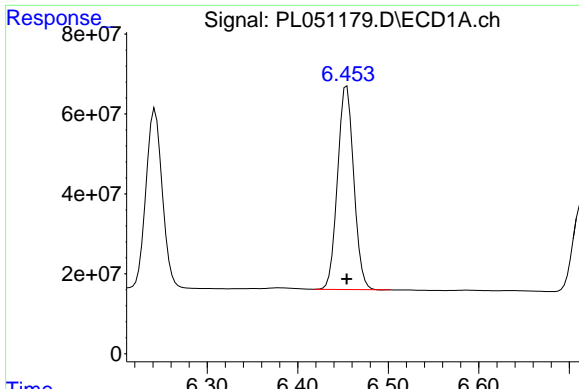
#17 4,4'-DDT
 R.T.: 7.043 min
 Delta R.T.: -0.003 min
 Response: 133233648
 Conc: 49.35 ng/ml



#18 Endrin aldehyde
 R.T.: 6.242 min
 Delta R.T.: 0.000 min
 Response: 560147853
 Conc: 48.55 ng/ml

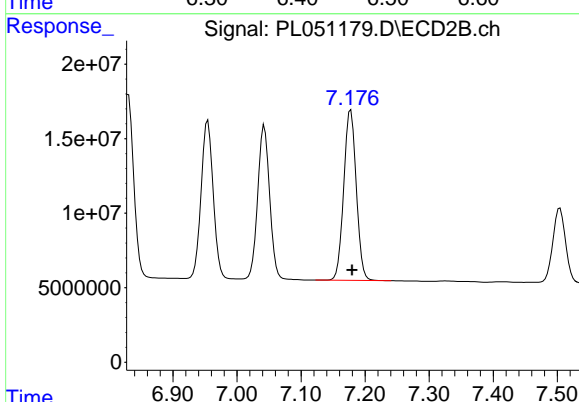


#18 Endrin aldehyde
 R.T.: 6.955 min
 Delta R.T.: -0.003 min
 Response: 133201286
 Conc: 49.01 ng/ml

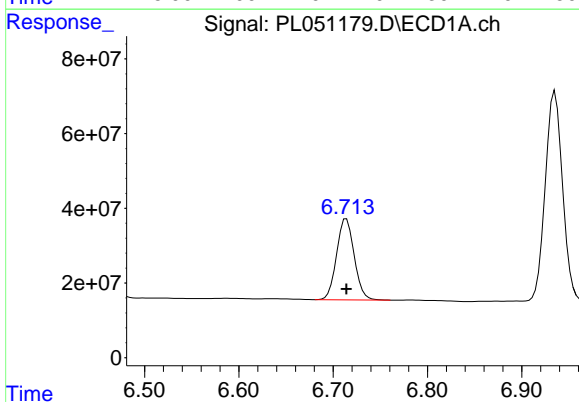


#19 Endosulfan Sulfate
 R.T.: 6.454 min
 Delta R.T.: 0.000 min
 Response: 634332268
 Conc: 49.79 ng/ml

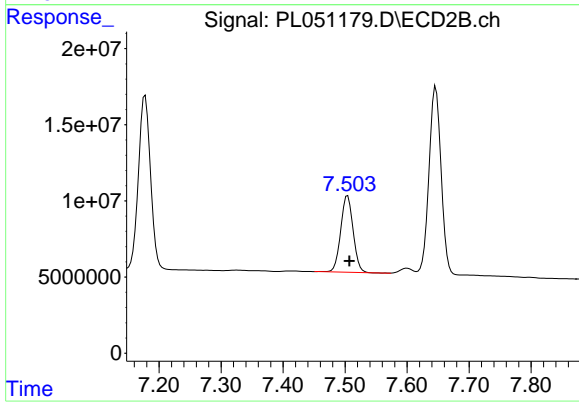
Instrument :
 ECD_L
 ClientSampled :



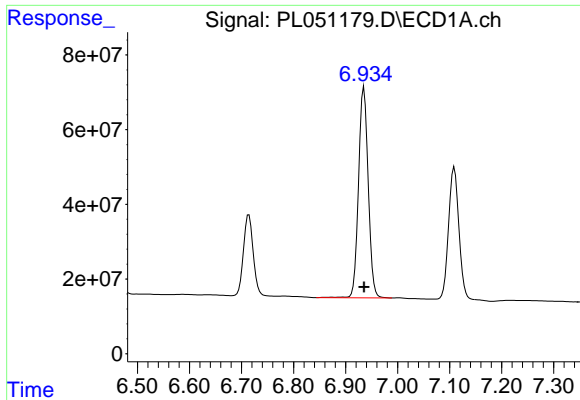
#19 Endosulfan Sulfate
 R.T.: 7.178 min
 Delta R.T.: -0.002 min
 Response: 155172477
 Conc: 53.73 ng/ml



#20 Methoxychlor
 R.T.: 6.714 min
 Delta R.T.: 0.000 min
 Response: 281774686
 Conc: 45.16 ng/ml

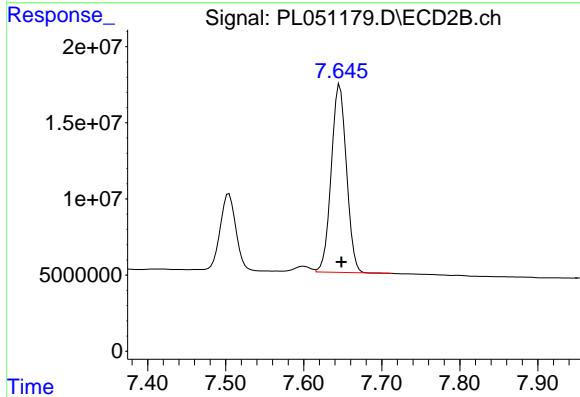


#20 Methoxychlor
 R.T.: 7.504 min
 Delta R.T.: -0.003 min
 Response: 70221150
 Conc: 47.86 ng/ml

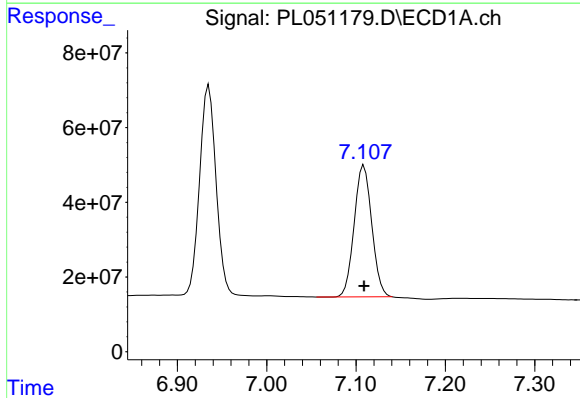


#21 Endrin ketone
 R.T.: 6.935 min
 Delta R.T.: 0.000 min
 Response: 728111266
 Conc: 53.23 ng/ml

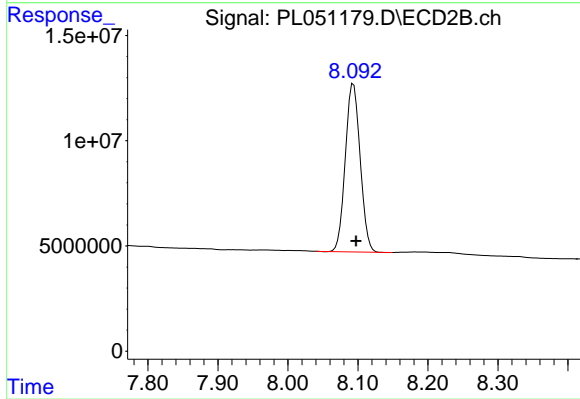
Instrument :
 ECD_L
 ClientSampleId :



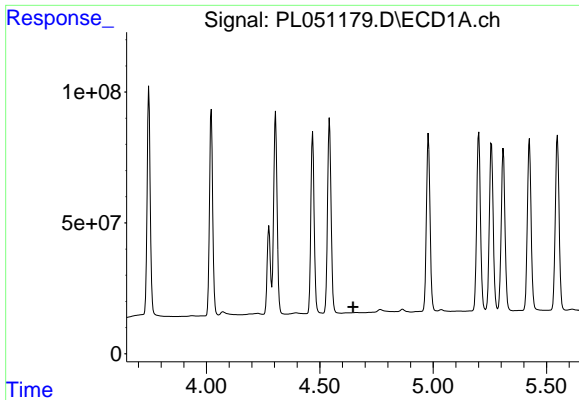
#21 Endrin ketone
 R.T.: 7.646 min
 Delta R.T.: -0.002 min
 Response: 166978894
 Conc: 57.75 ng/ml



#22 Mirex
 R.T.: 7.109 min
 Delta R.T.: 0.000 min
 Response: 482256774
 Conc: 49.19 ng/ml



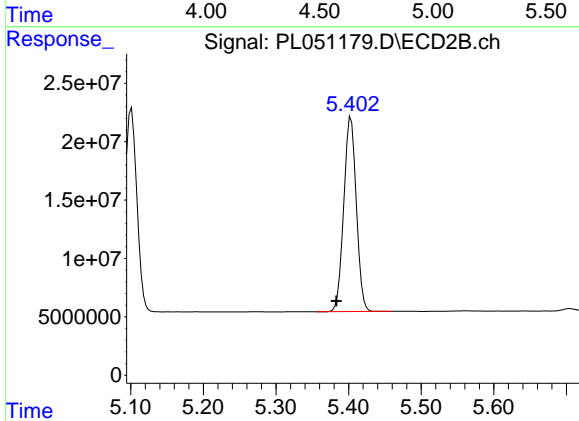
#22 Mirex
 R.T.: 8.094 min
 Delta R.T.: -0.004 min
 Response: 117894616
 Conc: 51.33 ng/ml



#24 Chlordane-2

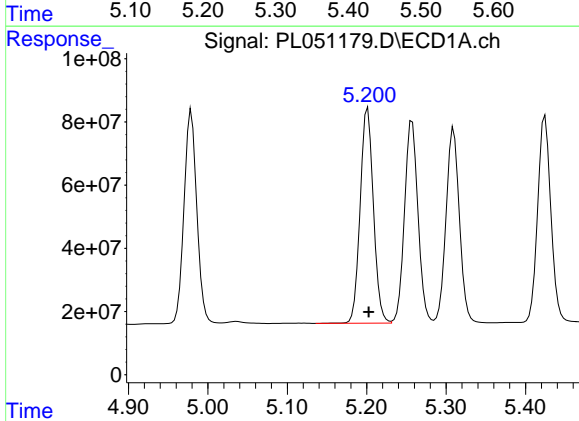
R.T.: 0.000 min
 Exp R.T.: 4.647 min
 Response: 0
 Conc: N.D.

Instrument :
 ECD_L
 ClientSampled :



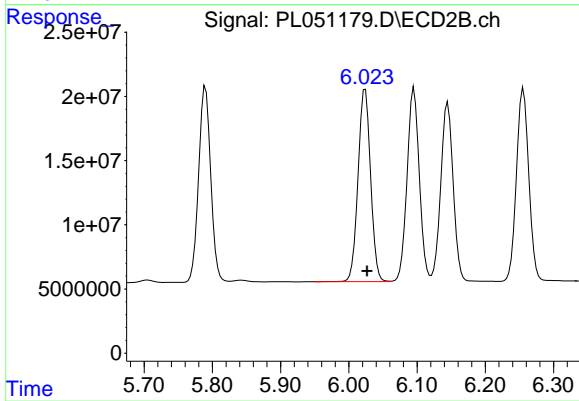
#24 Chlordane-2

R.T.: 5.403 min
 Delta R.T.: 0.020 min
 Response: 200547244
 Conc: 1707.48 ng/ml



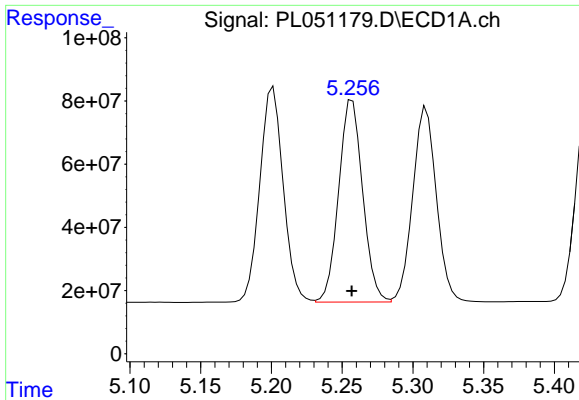
#25 Chlordane-3

R.T.: 5.201 min
 Delta R.T.: -0.001 min
 Response: 788299073
 Conc: 563.16 ng/ml



#25 Chlordane-3

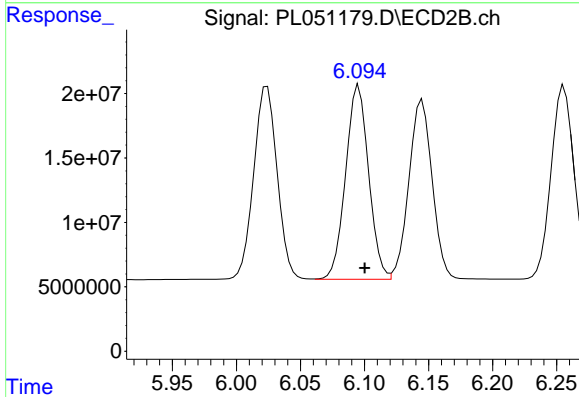
R.T.: 6.024 min
 Delta R.T.: -0.002 min
 Response: 191213569
 Conc: 397.55 ng/ml



#26 Chlordane-4

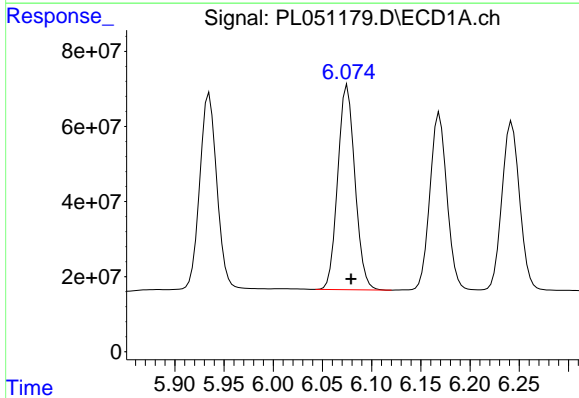
R.T.: 5.257 min
 Delta R.T.: 0.000 min
 Response: 757352189
 Conc: 574.20 ng/ml

Instrument :
 ECD_L
 ClientSampled :



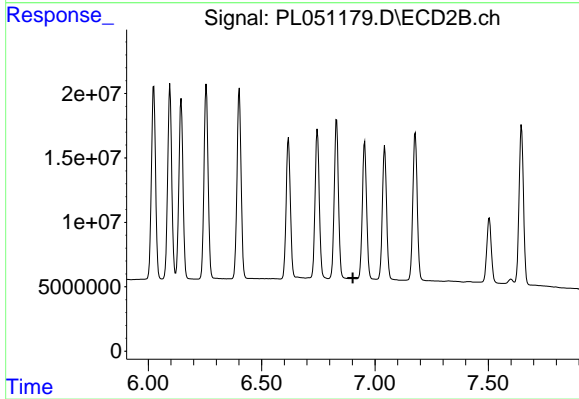
#26 Chlordane-4

R.T.: 6.096 min
 Delta R.T.: -0.005 min
 Response: 187966148
 Conc: 323.57 ng/ml



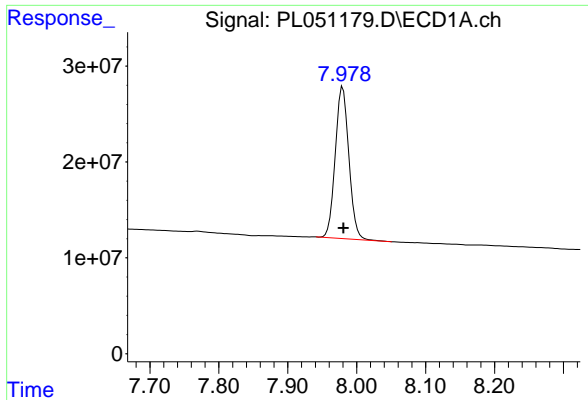
#27 Chlordane-5

R.T.: 6.075 min
 Delta R.T.: -0.004 min
 Response: 663752146
 Conc: 1306.76 ng/ml



#27 Chlordane-5

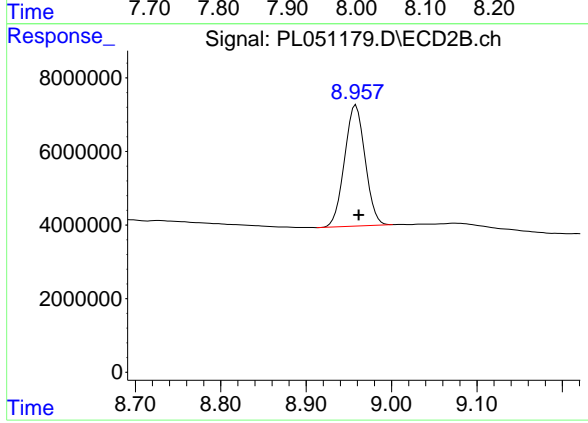
R.T.: 0.000 min
 Exp R.T. : 6.902 min
 Response: 0
 Conc: N.D.



#28 Decachlorobiphenyl

R.T.: 7.980 min
Delta R.T.: 0.000 min
Response: 216718852
Conc: 21.40 ng/ml

Instrument :
ECD_L
ClientSampleId :



#28 Decachlorobiphenyl

R.T.: 8.958 min
Delta R.T.: -0.003 min
Response: 55014311
Conc: 19.45 ng/ml