

Data Path : Z:\pestpcbsrv\HPCHEM1\ECD_L\Data\PL080719\
 Data File : PL051183.D
 Signal(s) : Signal #1: ECD1A.ch Signal #2: ECD2B.ch
 Acq On : 07 Aug 2019 22:28
 Operator : SM\AJ
 Sample : PSTDCCC050
 Misc :
 ALS Vial : 4 Sample Multiplier: 1

Instrument :
 ECD_L
 ClientSampleId :

Integration File signal 1: autoint1.e
 Integration File signal 2: autoint2.e
 Quant Time: Aug 08 02:06:02 2019
 Quant Method : Z:\pestpcbsrv\HPCHEM1\ECD_L\methods\PL071719.M
 Quant Title : GC Extractables
 QLast Update : Fri Jul 19 01:19:13 2019
 Response via : Initial Calibration
 Integrator: ChemStation

Volume Inj. : 1 µl
 Signal #1 Phase : ZB-MR2 Signal #2 Phase: ZB-MR1
 Signal #1 Info : 30M x 0.32mm x0.2 Signal #2 Info : 30M x 0.32mm x0.5µm

	Compound	RT#1	RT#2	Resp#1	Resp#2	ng/ml	ng/ml

System Monitoring Compounds							
1)	SA Tetrachlo...	3.318	3.928	540.5E6	146.3E6	53.794	51.282
28)	SA Decachlor...	7.978	8.957	585.6E6	149.1E6	57.835	52.724
Target Compounds							
2)	A alpha-BHC	3.745	4.317	910.4E6	222.4E6	54.327	53.903
3)	MA gamma-BHC...	4.021	4.600	851.2E6	209.7E6	55.341	54.129
4)	MA Heptachlor	4.304	5.101	888.0E6	217.3E6	54.120	52.394
5)	MB Aldrin	4.542	5.403	866.0E6	206.4E6	55.900	54.762
6)	B beta-BHC	4.275	4.777	355.5E6	95692217	54.220	55.350
7)	B delta-BHC	4.468	4.990	903.2E6	211.4E6	55.042	54.650
8)	Heptachlo...	4.979	5.790	802.0E6	199.5E6	54.283	52.153
9)	A Endosulfan I	5.309	6.145	761.3E6	187.6E6	52.344	54.543
10)	B gamma-Chl...	5.201	6.024	849.6E6	203.3E6	53.827	55.013
11)	B alpha-Chl...	5.257	6.096	817.6E6	200.6E6	53.590	54.745
12)	B 4,4'-DDE	5.424	6.256	755.5E6	198.9E6	50.415	55.187
13)	MA Dieldrin	5.548	6.401	854.5E6	198.2E6	55.138	55.963
14)	MA Endrin	5.800	6.619	747.0E6	162.8E6	50.749	52.491
15)	B Endosulfa...	6.076	6.830	735.2E6	175.2E6	52.530	55.098
16)	A 4,4'-DDD	5.935	6.746	685.3E6	155.3E6	57.184	58.305
17)	MA 4,4'-DDT	6.169	7.043	619.5E6	144.0E6	50.014	53.325
18)	B Endrin al...	6.242	6.955	601.9E6	140.9E6	52.177	51.842
19)	B Endosulfa...	6.454	7.178	669.4E6	162.7E6	52.547	56.342
20)	A Methoxychlor	6.713	7.504	312.6E6	79163005	50.100	53.953
21)	B Endrin ke...	6.935	7.646	772.6E6	173.2E6	56.489	59.900
22)	Mirex	7.108	8.094	518.7E6	125.4E6	52.906	54.605
24)	Chlordane-2	4.664f	5.403f	16954742	206.4E6	37.879	1756.987 #
25)	Chlordane-3	5.201	6.024	849.6E6	203.3E6	606.920	422.653 #
26)	Chlordane-4	5.257	6.096	817.6E6	200.6E6	619.853	345.397 #
27)	Chlordane-5	6.076	0.000	735.2E6	0	1447.334	N.D. #

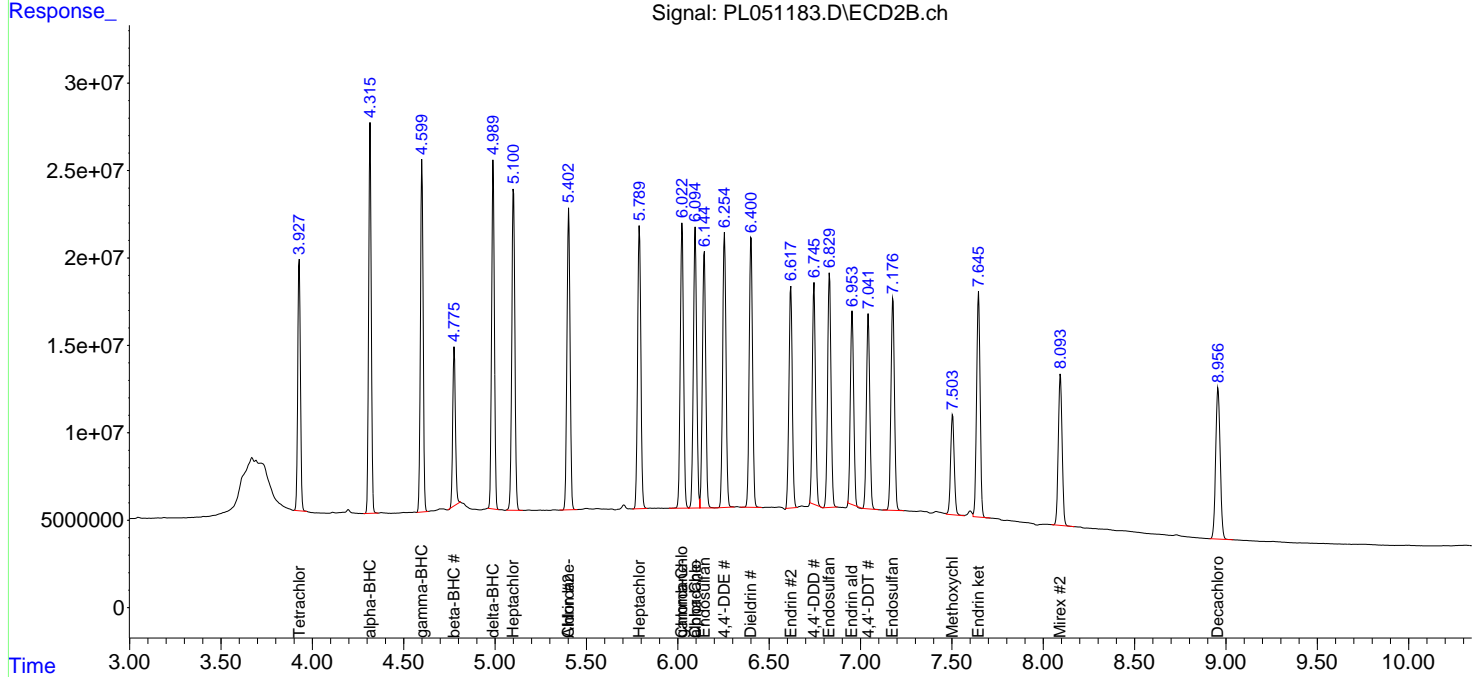
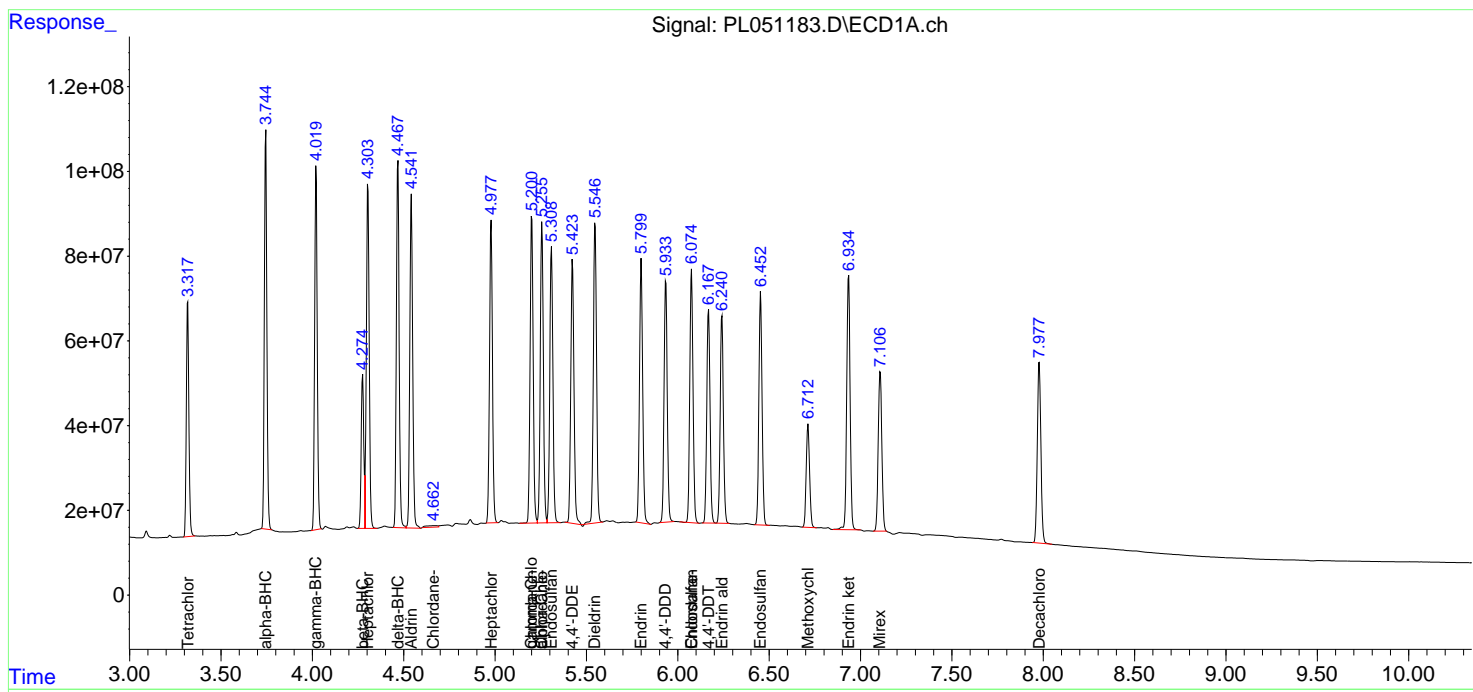
(f)=RT Delta > 1/2 Window (#)=Amounts differ by > 25% (m)=manual int.

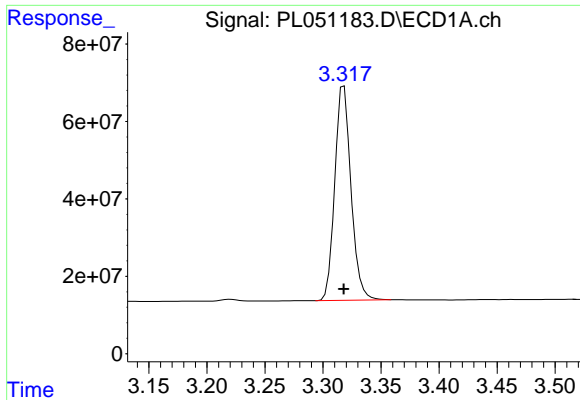
Data Path : Z:\pestpcbsrv\HPCHEM1\ECD_L\Data\PL080719\
 Data File : PL051183.D
 Signal(s) : Signal #1: ECD1A.ch Signal #2: ECD2B.ch
 Acq On : 07 Aug 2019 22:28
 Operator : SM\AJ
 Sample : PSTDCCC050
 Misc :
 ALS Vial : 4 Sample Multiplier: 1

Instrument :
 ECD_L
 ClientSampled :

Integration File signal 1: autoint1.e
 Integration File signal 2: autoint2.e
 Quant Time: Aug 08 02:06:02 2019
 Quant Method : Z:\pestpcbsrv\HPCHEM1\ECD_L\methods\PL071719.M
 Quant Title : GC Extractables
 QLast Update : Fri Jul 19 01:19:13 2019
 Response via : Initial Calibration
 Integrator: ChemStation

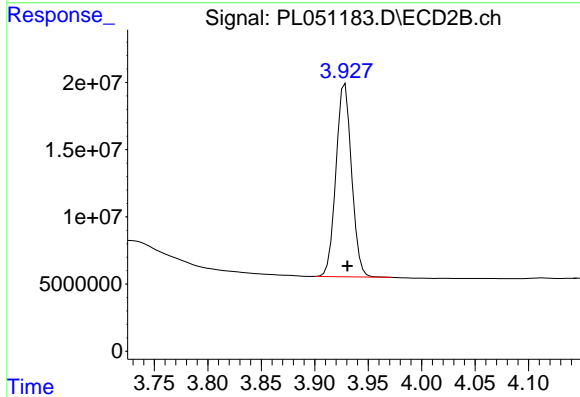
Volume Inj. : 1 µl
 Signal #1 Phase : ZB-MR2 Signal #2 Phase: ZB-MR1
 Signal #1 Info : 30M x 0.32mm x0.2 Signal #2 Info : 30M x 0.32mm x0.5µm



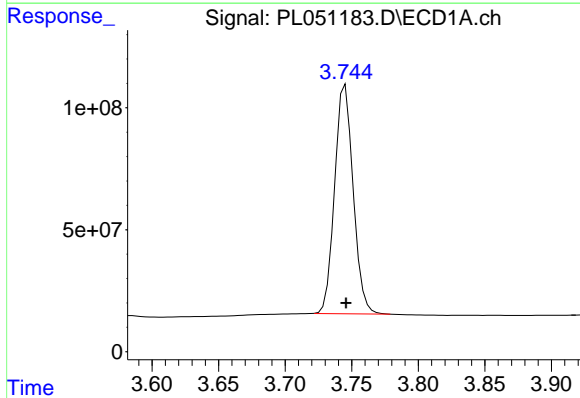


#1 Tetrachloro-m-xylene
 R.T.: 3.318 min
 Delta R.T.: 0.000 min
 Response: 540518464
 Conc: 53.79 ng/ml

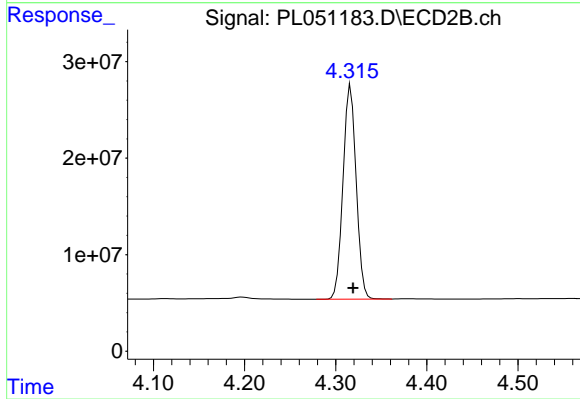
Instrument :
 ECD_L
 ClientSampleId :



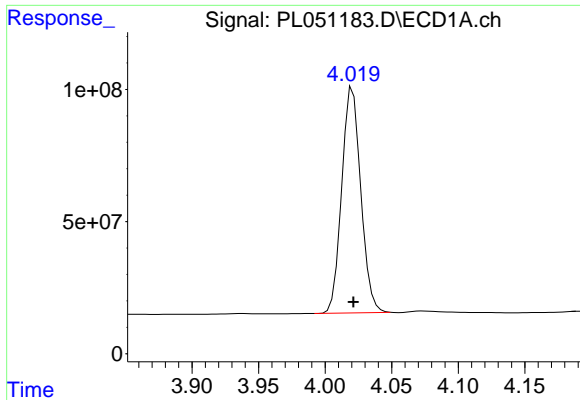
#1 Tetrachloro-m-xylene
 R.T.: 3.928 min
 Delta R.T.: -0.002 min
 Response: 146316874
 Conc: 51.28 ng/ml



#2 alpha-BHC
 R.T.: 3.745 min
 Delta R.T.: 0.000 min
 Response: 910389956
 Conc: 54.33 ng/ml



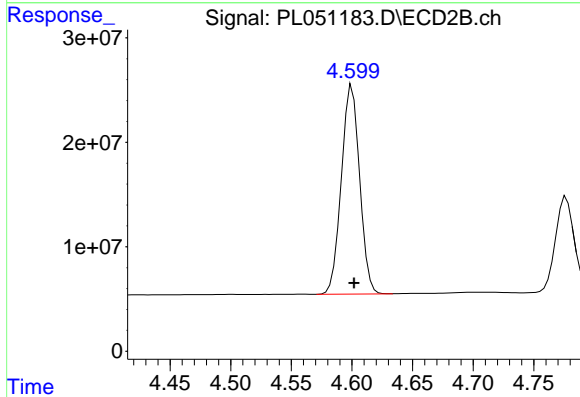
#2 alpha-BHC
 R.T.: 4.317 min
 Delta R.T.: -0.002 min
 Response: 222404012
 Conc: 53.90 ng/ml



#3 gamma-BHC (Lindane)

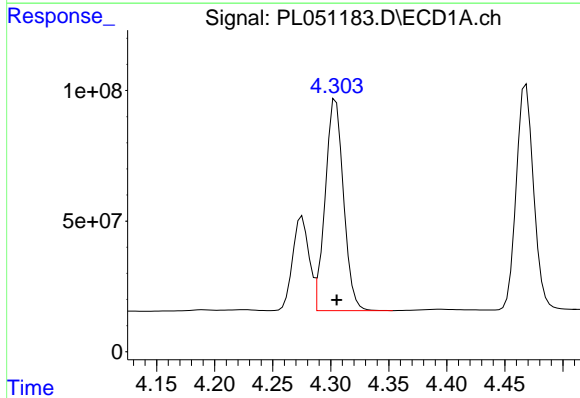
R.T.: 4.021 min
 Delta R.T.: 0.000 min
 Response: 851244275
 Conc: 55.34 ng/ml

Instrument :
 ECD_L
 ClientSampleId :



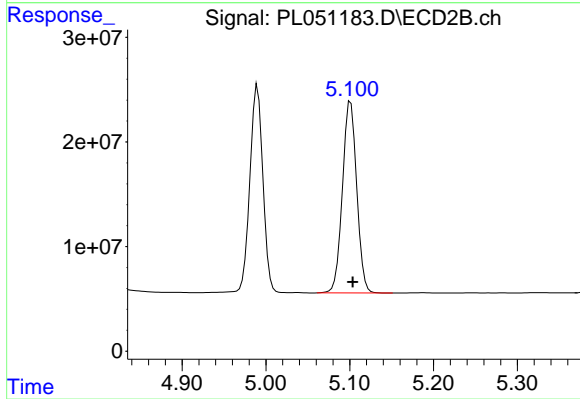
#3 gamma-BHC (Lindane)

R.T.: 4.600 min
 Delta R.T.: -0.002 min
 Response: 209652568
 Conc: 54.13 ng/ml



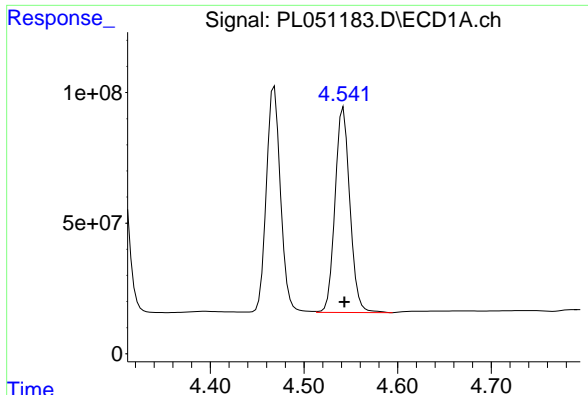
#4 Heptachlor

R.T.: 4.304 min
 Delta R.T.: 0.000 min
 Response: 887993041
 Conc: 54.12 ng/ml



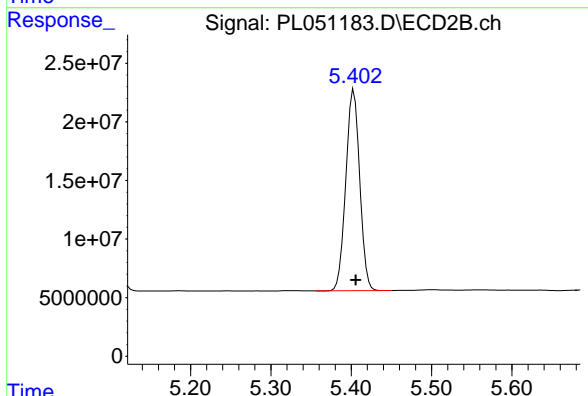
#4 Heptachlor

R.T.: 5.101 min
 Delta R.T.: -0.003 min
 Response: 217260981
 Conc: 52.39 ng/ml

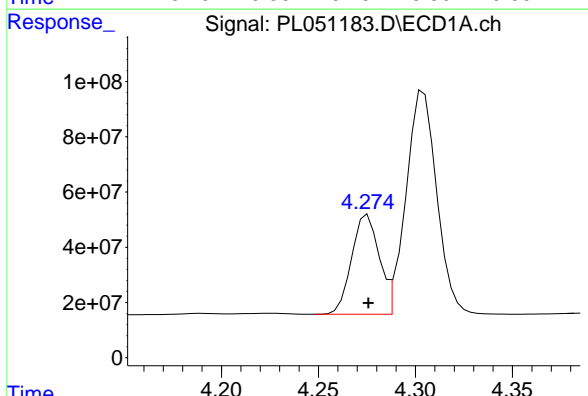


#5 Aldrin
 R.T.: 4.542 min
 Delta R.T.: 0.000 min
 Response: 865971635
 Conc: 55.90 ng/ml

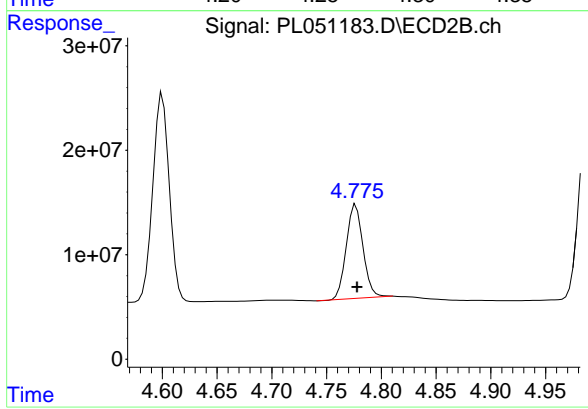
Instrument :
 ECD_L
 ClientSampled :



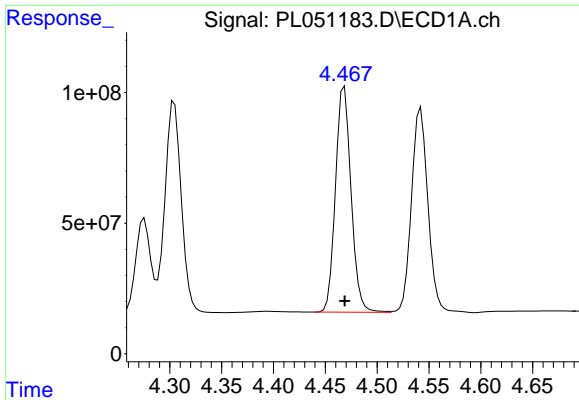
#5 Aldrin
 R.T.: 5.403 min
 Delta R.T.: -0.002 min
 Response: 206362480
 Conc: 54.76 ng/ml



#6 beta-BHC
 R.T.: 4.275 min
 Delta R.T.: 0.000 min
 Response: 355457077
 Conc: 54.22 ng/ml

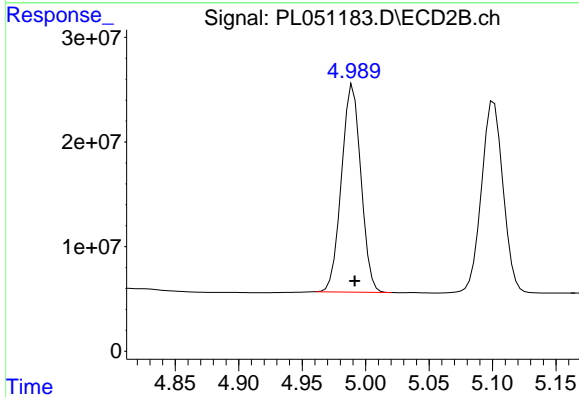


#6 beta-BHC
 R.T.: 4.777 min
 Delta R.T.: -0.001 min
 Response: 95692217
 Conc: 55.35 ng/ml

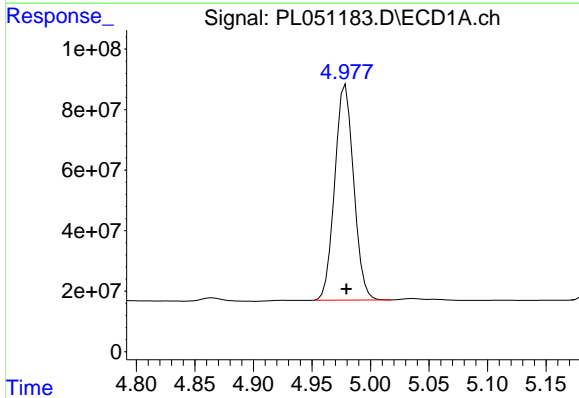


#7 delta-BHC
 R.T.: 4.468 min
 Delta R.T.: 0.000 min
 Response: 903171025
 Conc: 55.04 ng/ml

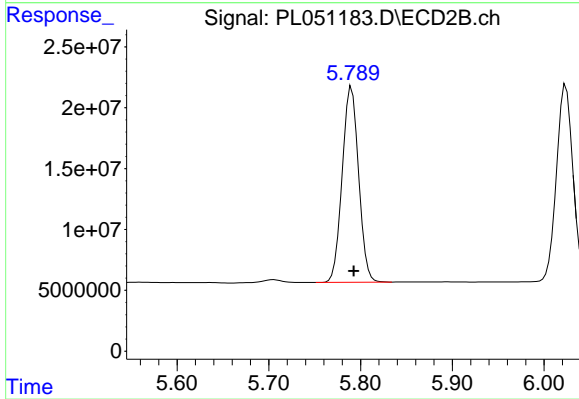
Instrument :
 ECD_L
 ClientSampleId :



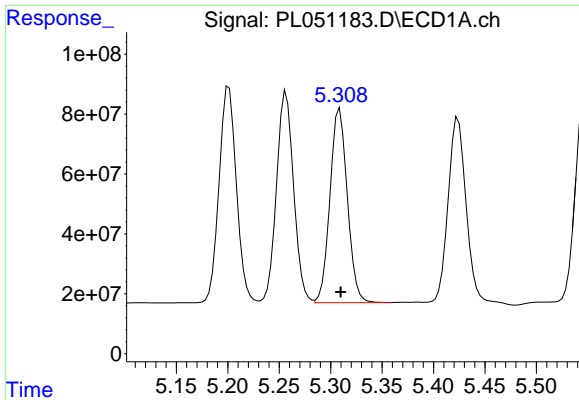
#7 delta-BHC
 R.T.: 4.990 min
 Delta R.T.: -0.001 min
 Response: 211364300
 Conc: 54.65 ng/ml



#8 Heptachlor epoxide
 R.T.: 4.979 min
 Delta R.T.: 0.000 min
 Response: 801956452
 Conc: 54.28 ng/ml

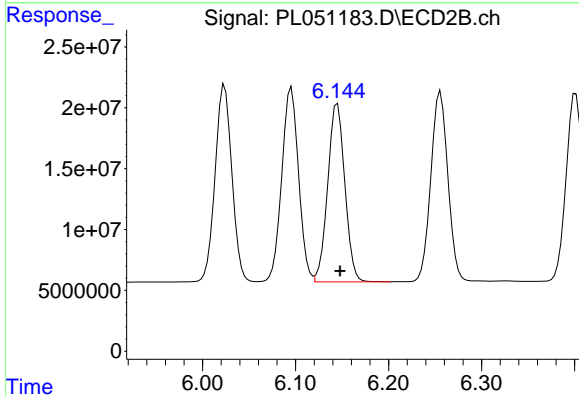


#8 Heptachlor epoxide
 R.T.: 5.790 min
 Delta R.T.: -0.002 min
 Response: 199474998
 Conc: 52.15 ng/ml

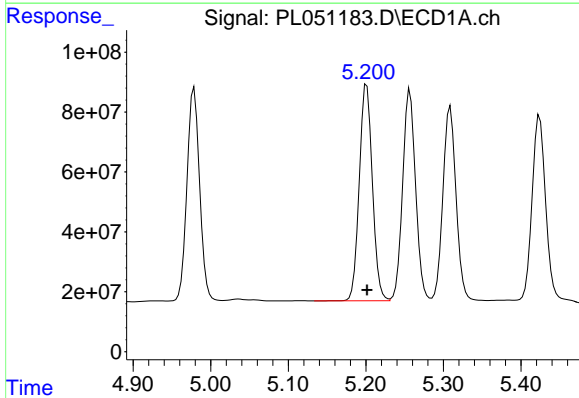


#9 Endosulfan I
 R.T.: 5.309 min
 Delta R.T.: -0.001 min
 Response: 761284532
 Conc: 52.34 ng/ml

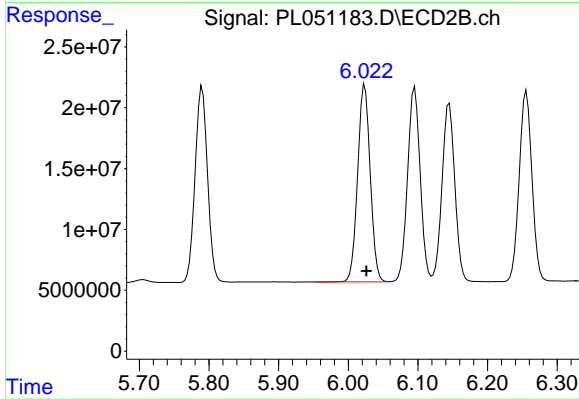
Instrument :
 ECD_L
 ClientSampleId :



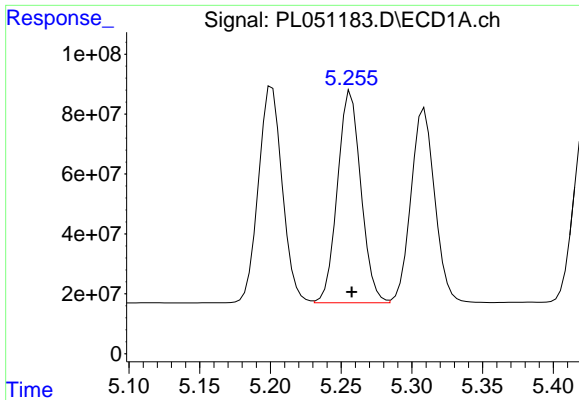
#9 Endosulfan I
 R.T.: 6.145 min
 Delta R.T.: -0.003 min
 Response: 187565753
 Conc: 54.54 ng/ml



#10 gamma-Chlordane
 R.T.: 5.201 min
 Delta R.T.: 0.000 min
 Response: 849559640
 Conc: 53.83 ng/ml

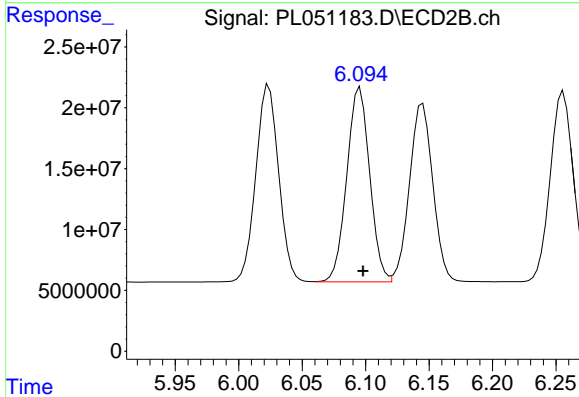


#10 gamma-Chlordane
 R.T.: 6.024 min
 Delta R.T.: -0.002 min
 Response: 203287573
 Conc: 55.01 ng/ml

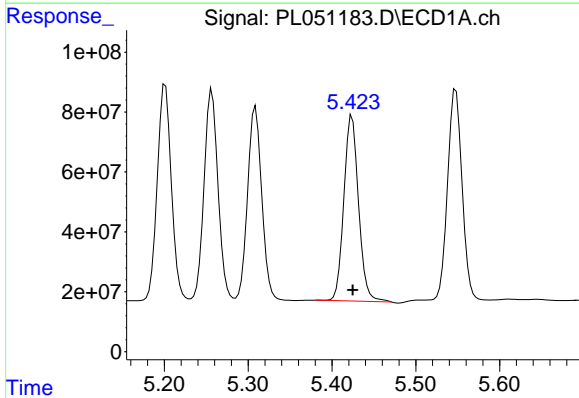


#11 alpha-Chlordane
R.T.: 5.257 min
Delta R.T.: 0.000 min
Response: 817573687
Conc: 53.59 ng/ml

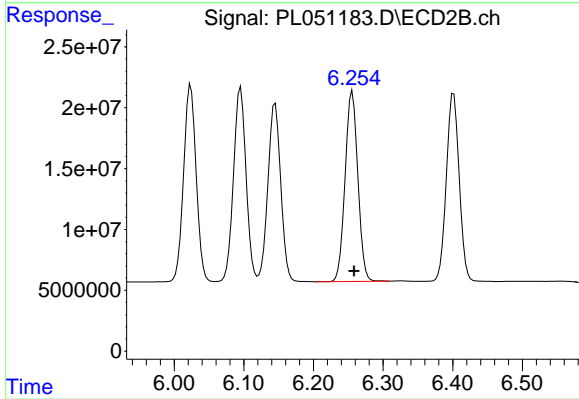
Instrument :
ECD_L
ClientSampled :



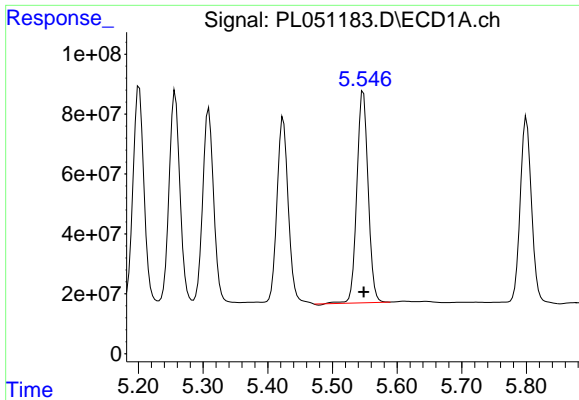
#11 alpha-Chlordane
R.T.: 6.096 min
Delta R.T.: -0.002 min
Response: 200647317
Conc: 54.74 ng/ml



#12 4,4'-DDE
R.T.: 5.424 min
Delta R.T.: 0.000 min
Response: 755517027
Conc: 50.42 ng/ml

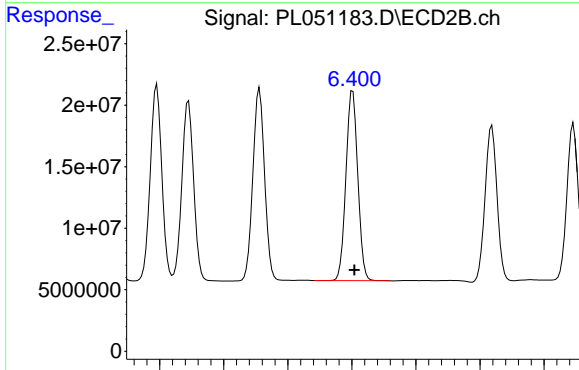


#12 4,4'-DDE
R.T.: 6.256 min
Delta R.T.: -0.002 min
Response: 198858938
Conc: 55.19 ng/ml

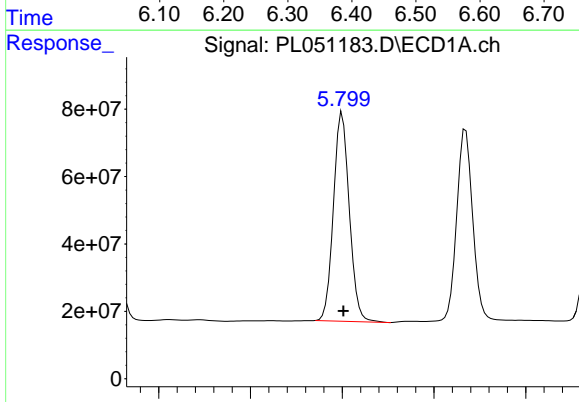


#13 Dieldrin
 R.T.: 5.548 min
 Delta R.T.: 0.000 min
 Response: 854458087
 Conc: 55.14 ng/ml

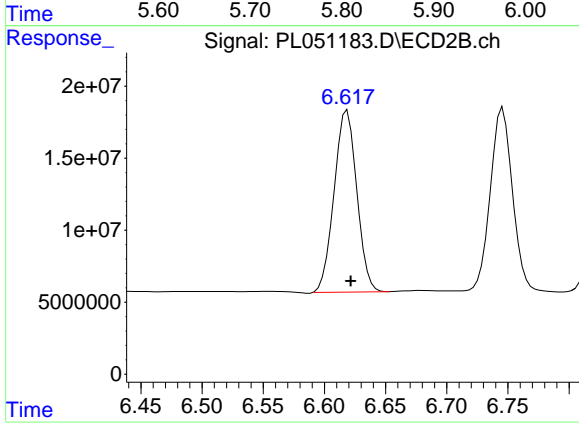
Instrument :
 ECD_L
 ClientSampled :



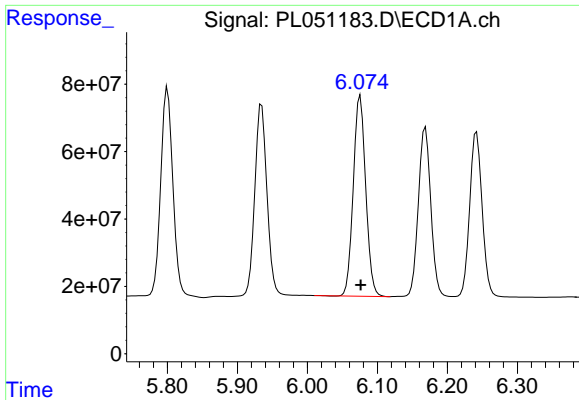
#13 Dieldrin
 R.T.: 6.401 min
 Delta R.T.: -0.003 min
 Response: 198174475
 Conc: 55.96 ng/ml



#14 Endrin
 R.T.: 5.800 min
 Delta R.T.: -0.001 min
 Response: 747045074
 Conc: 50.75 ng/ml



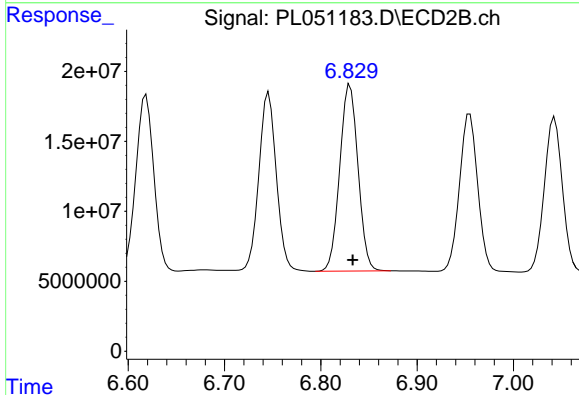
#14 Endrin
 R.T.: 6.619 min
 Delta R.T.: -0.003 min
 Response: 162796652
 Conc: 52.49 ng/ml



#15 Endosulfan II

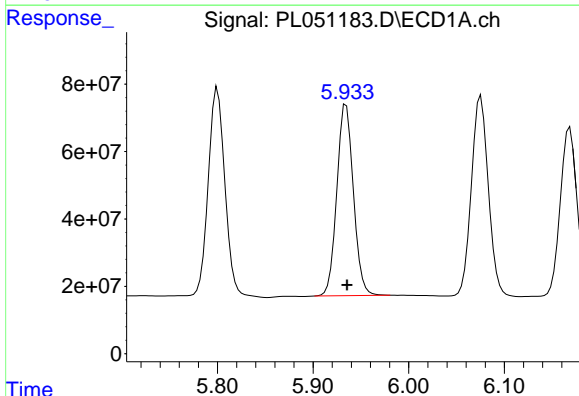
R.T.: 6.076 min
 Delta R.T.: 0.000 min
 Response: 735154551
 Conc: 52.53 ng/ml

Instrument :
 ECD_L
 ClientSampled :



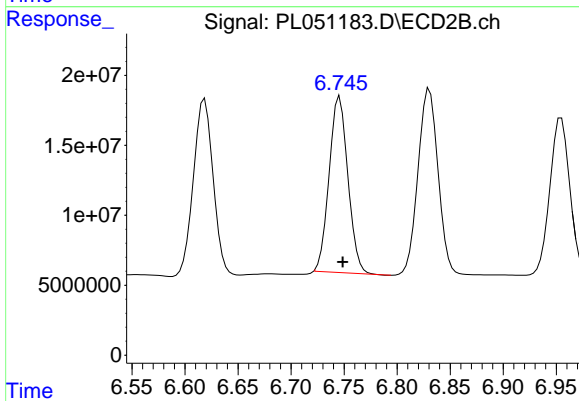
#15 Endosulfan II

R.T.: 6.830 min
 Delta R.T.: -0.003 min
 Response: 175165535
 Conc: 55.10 ng/ml



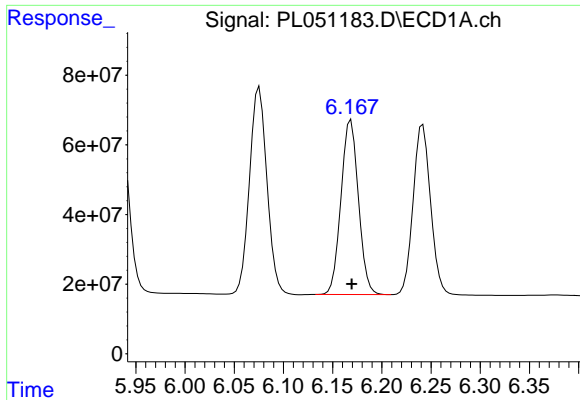
#16 4,4'-DDD

R.T.: 5.935 min
 Delta R.T.: 0.000 min
 Response: 685286621
 Conc: 57.18 ng/ml



#16 4,4'-DDD

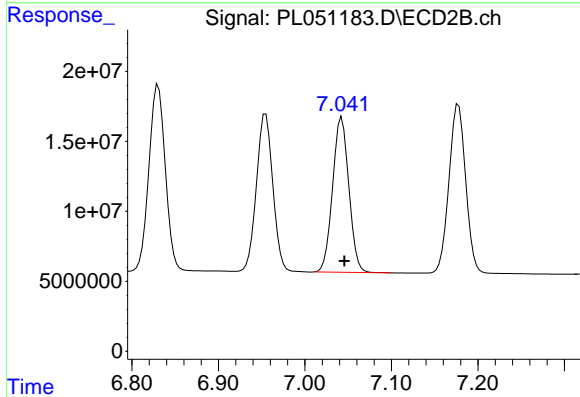
R.T.: 6.746 min
 Delta R.T.: -0.003 min
 Response: 155259090
 Conc: 58.30 ng/ml



#17 4,4'-DDT

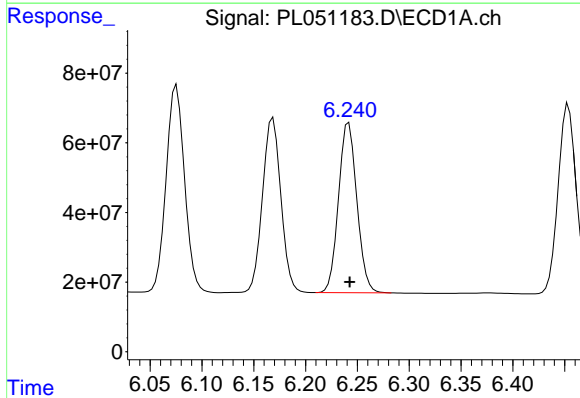
R.T.: 6.169 min
 Delta R.T.: 0.000 min
 Response: 619464454
 Conc: 50.01 ng/ml

Instrument :
 ECD_L
 ClientSampled :



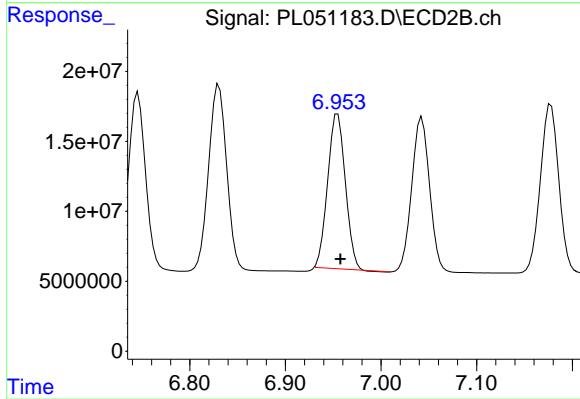
#17 4,4'-DDT

R.T.: 7.043 min
 Delta R.T.: -0.003 min
 Response: 143954832
 Conc: 53.32 ng/ml



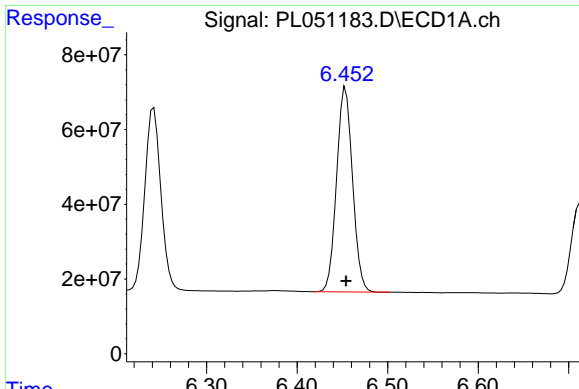
#18 Endrin aldehyde

R.T.: 6.242 min
 Delta R.T.: 0.000 min
 Response: 601929636
 Conc: 52.18 ng/ml



#18 Endrin aldehyde

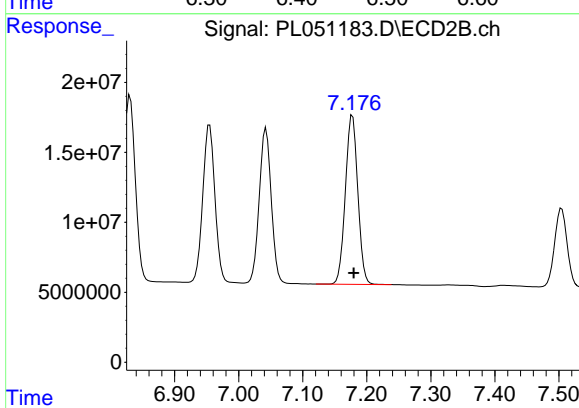
R.T.: 6.955 min
 Delta R.T.: -0.003 min
 Response: 140887279
 Conc: 51.84 ng/ml



#19 Endosulfan Sulfate

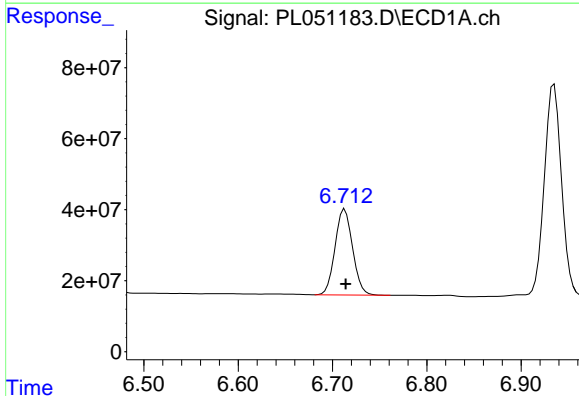
R.T.: 6.454 min
 Delta R.T.: 0.000 min
 Response: 669419375
 Conc: 52.55 ng/ml

Instrument :
 ECD_L
 ClientSampleId :



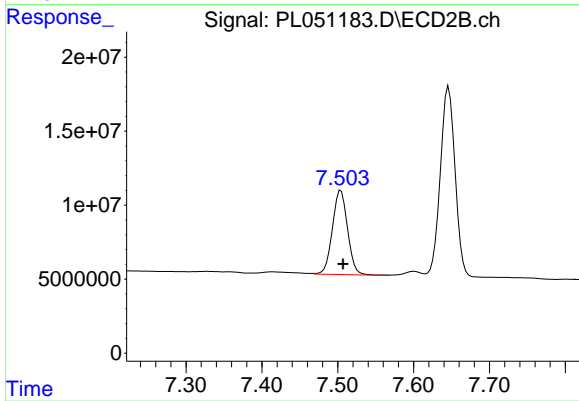
#19 Endosulfan Sulfate

R.T.: 7.178 min
 Delta R.T.: -0.002 min
 Response: 162728638
 Conc: 56.34 ng/ml



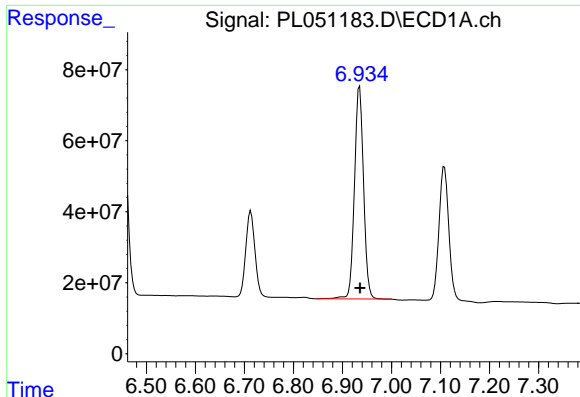
#20 Methoxychlor

R.T.: 6.713 min
 Delta R.T.: 0.000 min
 Response: 312568979
 Conc: 50.10 ng/ml



#20 Methoxychlor

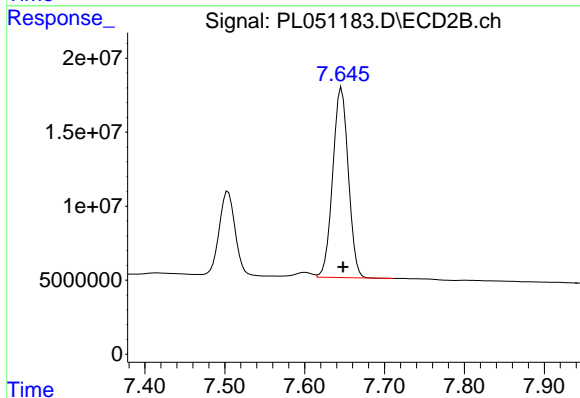
R.T.: 7.504 min
 Delta R.T.: -0.003 min
 Response: 79163005
 Conc: 53.95 ng/ml



#21 Endrin ketone

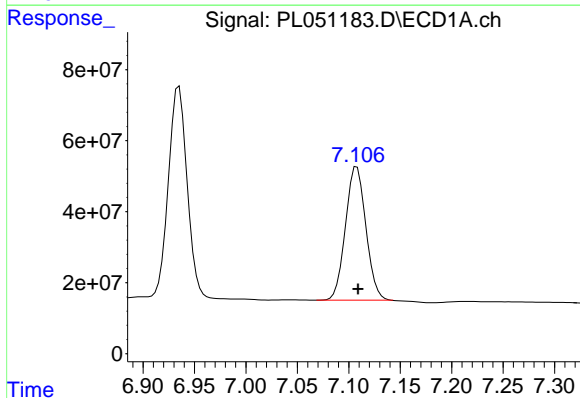
R.T.: 6.935 min
 Delta R.T.: 0.000 min
 Response: 772632250
 Conc: 56.49 ng/ml

Instrument :
 ECD_L
 ClientSampled :



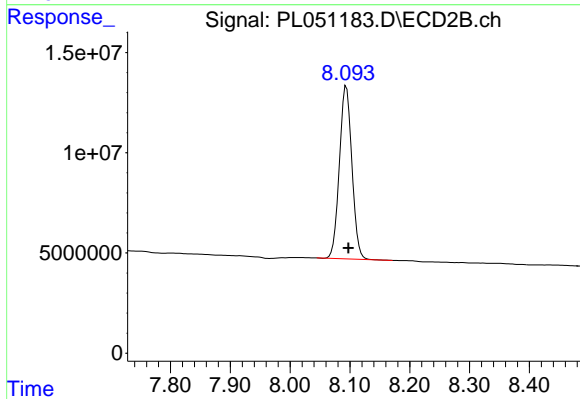
#21 Endrin ketone

R.T.: 7.646 min
 Delta R.T.: -0.002 min
 Response: 173187152
 Conc: 59.90 ng/ml



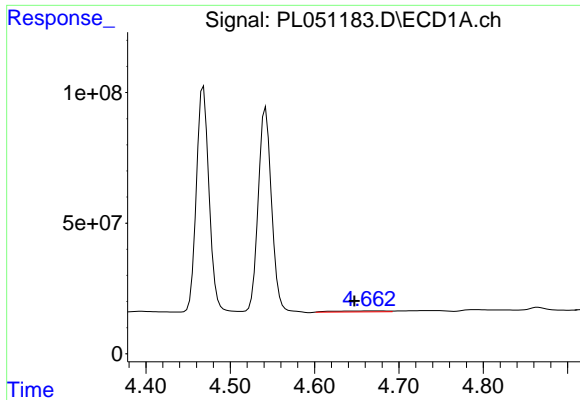
#22 Mirex

R.T.: 7.108 min
 Delta R.T.: -0.001 min
 Response: 518703212
 Conc: 52.91 ng/ml



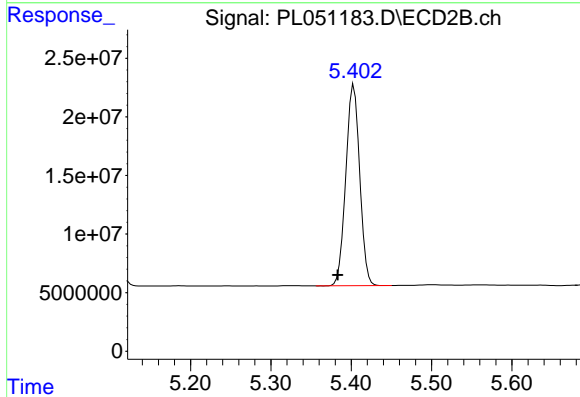
#22 Mirex

R.T.: 8.094 min
 Delta R.T.: -0.003 min
 Response: 125426790
 Conc: 54.60 ng/ml

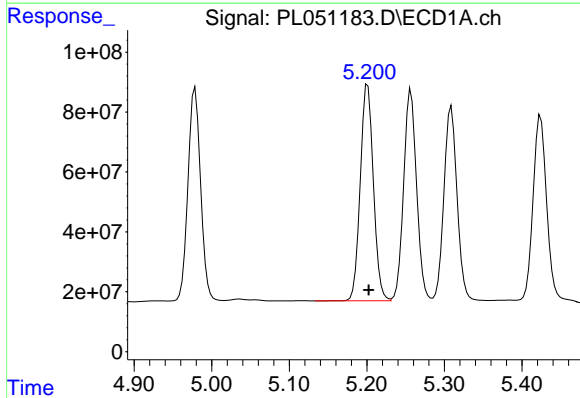


#24 Chlordane-2
 R.T.: 4.664 min
 Delta R.T.: 0.017 min
 Response: 16954742
 Conc: 37.88 ng/ml

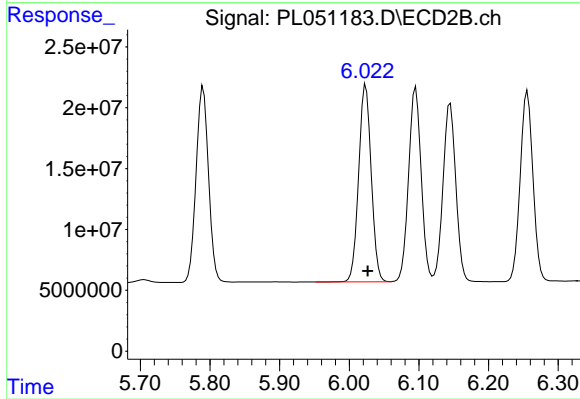
Instrument :
 ECD_L
 ClientSampleId :



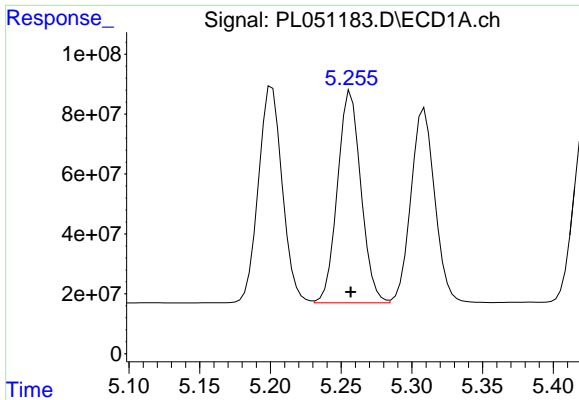
#24 Chlordane-2
 R.T.: 5.403 min
 Delta R.T.: 0.020 min
 Response: 206362480
 Conc: 1756.99 ng/ml



#25 Chlordane-3
 R.T.: 5.201 min
 Delta R.T.: -0.001 min
 Response: 849559640
 Conc: 606.92 ng/ml

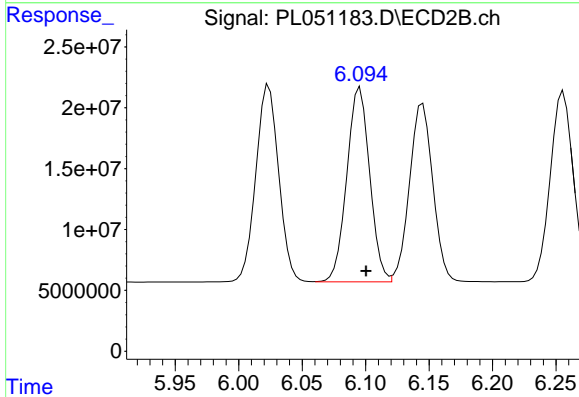


#25 Chlordane-3
 R.T.: 6.024 min
 Delta R.T.: -0.003 min
 Response: 203287573
 Conc: 422.65 ng/ml

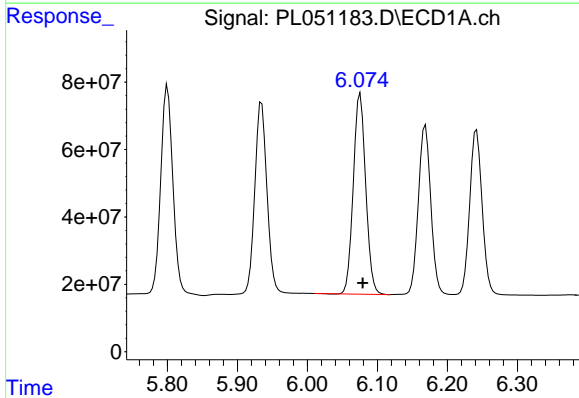


#26 Chlordane-4
 R.T.: 5.257 min
 Delta R.T.: 0.000 min
 Response: 817573687
 Conc: 619.85 ng/ml

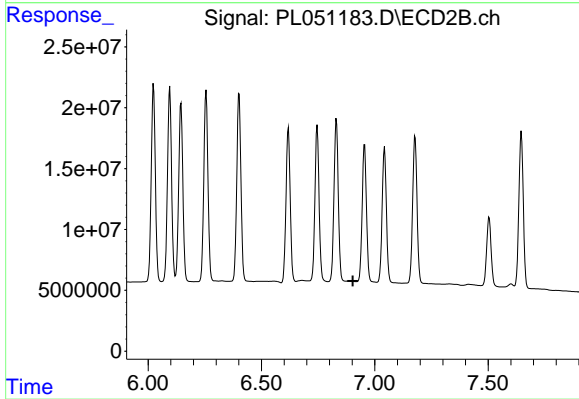
Instrument :
 ECD_L
 ClientSampled :



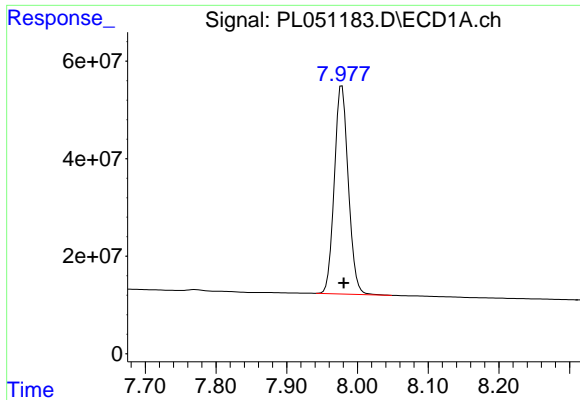
#26 Chlordane-4
 R.T.: 6.096 min
 Delta R.T.: -0.005 min
 Response: 200647317
 Conc: 345.40 ng/ml



#27 Chlordane-5
 R.T.: 6.076 min
 Delta R.T.: -0.004 min
 Response: 735154551
 Conc: 1447.33 ng/ml



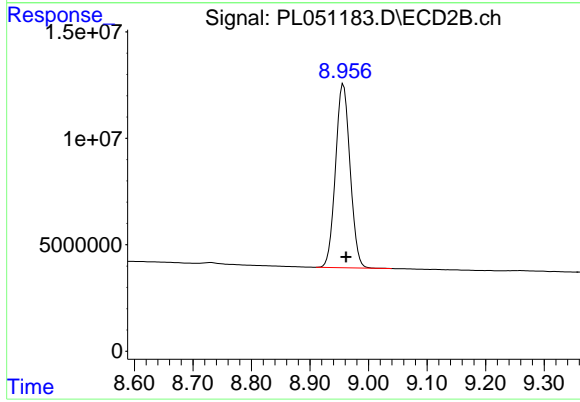
#27 Chlordane-5
 R.T.: 0.000 min
 Exp R.T. : 6.902 min
 Response: 0
 Conc: N.D.



#28 Decachlorobiphenyl

R.T.: 7.978 min
Delta R.T.: -0.002 min
Response: 585604656
Conc: 57.84 ng/ml

Instrument :
ECD_L
ClientSampleId :



#28 Decachlorobiphenyl

R.T.: 8.957 min
Delta R.T.: -0.005 min
Response: 149098745
Conc: 52.72 ng/ml