

Data Path : Z:\pestpcbsrv\HPCHEM1\ECD_L\Data\PL080719\
 Data File : PL051188.D
 Signal(s) : Signal #1: ECD1A.ch Signal #2: ECD2B.ch
 Acq On : 07 Aug 2019 23:44
 Operator : SM\AJ
 Sample : K4148-08
 Misc :
 ALS Vial : 37 Sample Multiplier: 1

Instrument :
 ECD_L
 ClientSampleId :

Integration File signal 1: autoint1.e
 Integration File signal 2: autoint2.e
 Quant Time: Aug 08 02:08:15 2019
 Quant Method : Z:\pestpcbsrv\HPCHEM1\ECD_L\methods\PL071719.M
 Quant Title : GC Extractables
 QLast Update : Fri Jul 19 01:19:13 2019
 Response via : Initial Calibration
 Integrator: ChemStation

Volume Inj. : 1 µl
 Signal #1 Phase : ZB-MR2 Signal #2 Phase: ZB-MR1
 Signal #1 Info : 30M x 0.32mm x0.2 Signal #2 Info : 30M x 0.32mm x0.5µm

Compound	RT#1	RT#2	Resp#1	Resp#2	ng/ml	ng/ml

System Monitoring Compounds						
1) SA Tetrachlo...	3.318	3.928	228.7E6	63970152	22.758	22.420
28) SA Decachlor...	7.979	8.958	213.6E6	56014354	21.100	19.808
Target Compounds						
2) A alpha-BHC	3.732	4.291f	22113975	3429830	1.320	0.831 #
3) MA gamma-BHC...	4.033	0.000	12498466	0	0.813	N.D. #
5) MB Aldrin	4.538	0.000	156.9E6	0	10.126	N.D. #
8) B Heptachlo...	0.000	5.806	0	8088055	N.D.	2.115 #
9) A Endosulfan I	5.327f	0.000	10378905	0	0.714	N.D. #
10) B gamma-Chl...	5.201	0.000	100.1E6	0	6.343	N.D. #
11) B alpha-Chl...	5.270	6.070f	45848042	4898793	3.005	1.337 #
15) B Endosulfa...	0.000	6.843	0	611833	N.D.	0.192 #
16) A 4,4'-DDD	5.934	0.000	10855643	0	0.906	N.D. #
22) Mirex	7.108	0.000	3149140	0	0.321	N.D. #
23) Chlordane-1	4.152	0.000	3113386	0	8.461	N.D. #
24) Chlordane-2	4.658	0.000	12304265	0	27.489	N.D. #
25) Chlordane-3	5.201	0.000	100.1E6	0	71.525	N.D. #
26) Chlordane-4	5.270	0.000	45848042	0	34.760	N.D. #

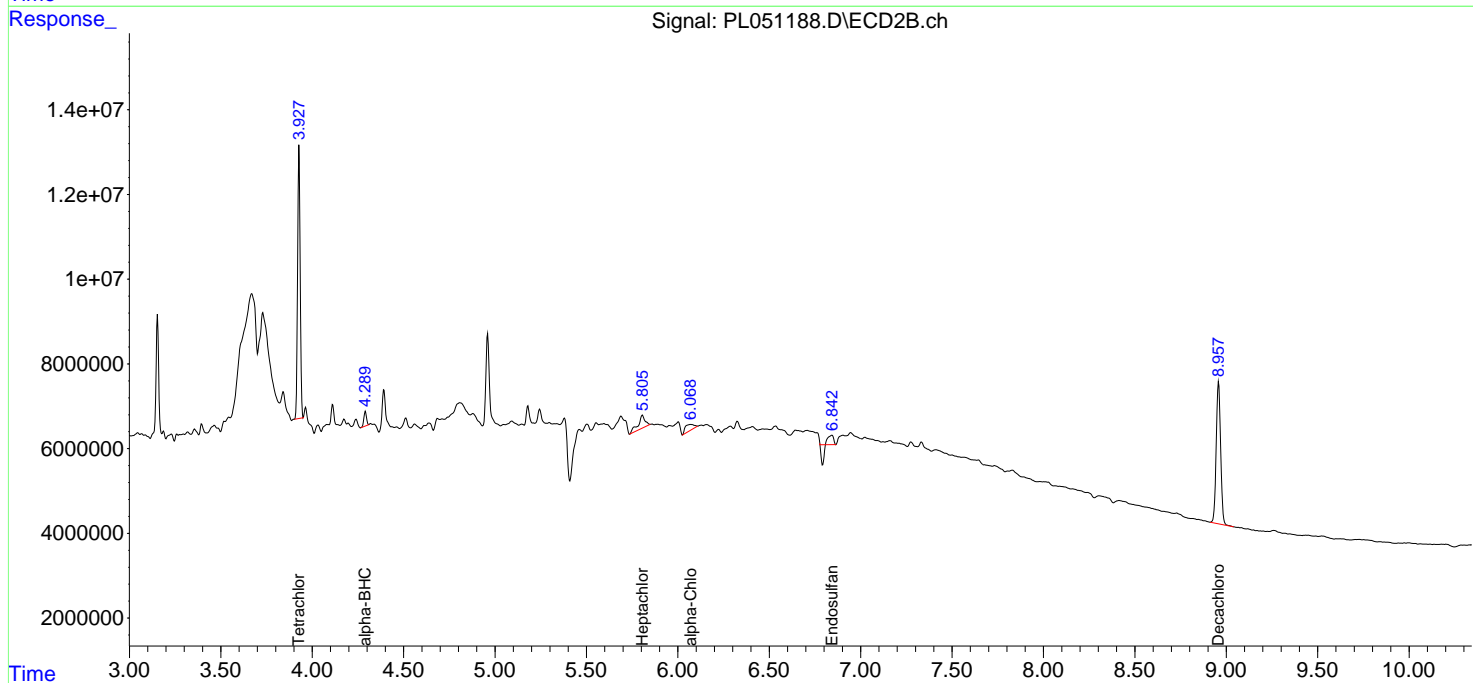
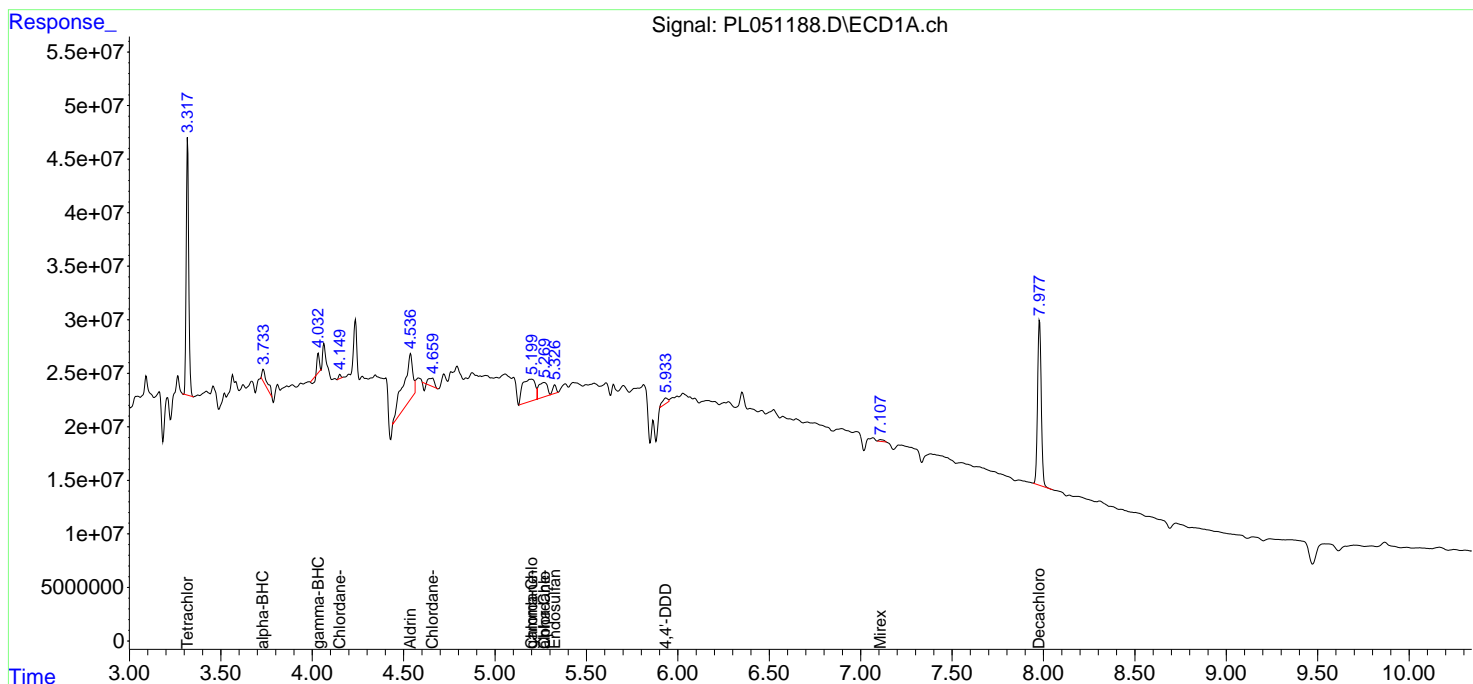
(f)=RT Delta > 1/2 Window (#)=Amounts differ by > 25% (m)=manual int.

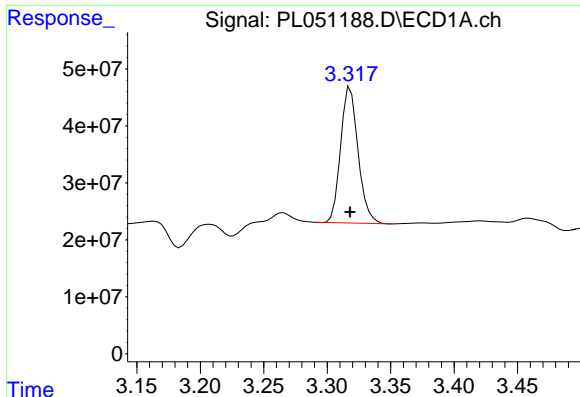
Data Path : Z:\pestpcbsrv\HPCHEM1\ECD_L\Data\PL080719\
 Data File : PL051188.D
 Signal(s) : Signal #1: ECD1A.ch Signal #2: ECD2B.ch
 Acq On : 07 Aug 2019 23:44
 Operator : SM\AJ
 Sample : K4148-08
 Misc :
 ALS Vial : 37 Sample Multiplier: 1

Instrument :
 ECD_L
 ClientSampled :

Integration File signal 1: autoint1.e
 Integration File signal 2: autoint2.e
 Quant Time: Aug 08 02:08:15 2019
 Quant Method : Z:\pestpcbsrv\HPCHEM1\ECD_L\methods\PL071719.M
 Quant Title : GC Extractables
 QLast Update : Fri Jul 19 01:19:13 2019
 Response via : Initial Calibration
 Integrator: ChemStation

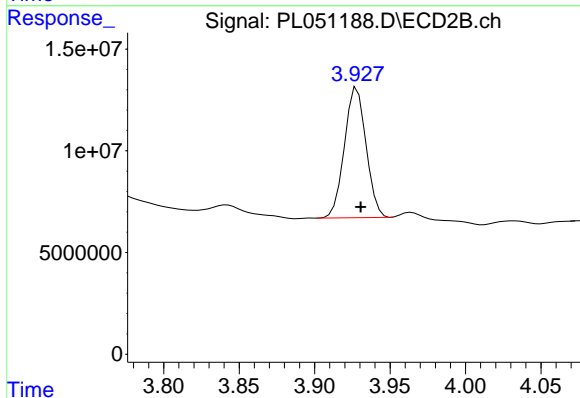
Volume Inj. : 1 µl
 Signal #1 Phase : ZB-MR2 Signal #2 Phase: ZB-MR1
 Signal #1 Info : 30M x 0.32mm x0.2 Signal #2 Info : 30M x 0.32mm x0.5µm



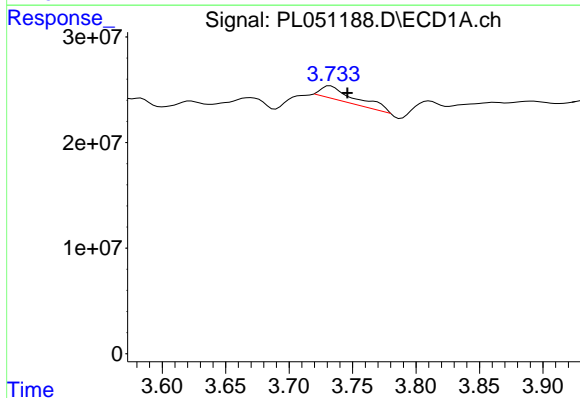


#1 Tetrachloro-m-xylene
 R.T.: 3.318 min
 Delta R.T.: 0.000 min
 Response: 228673172
 Conc: 22.76 ng/ml

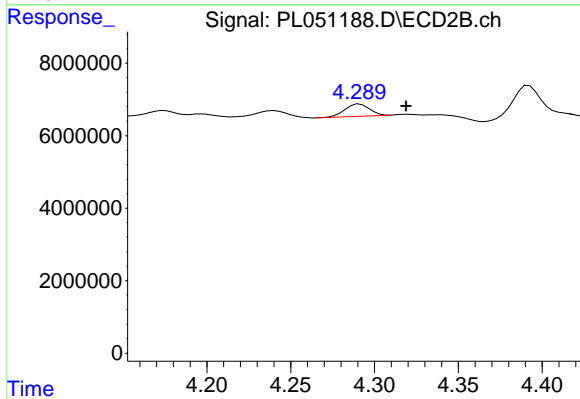
Instrument :
 ECD_L
 ClientSampled :



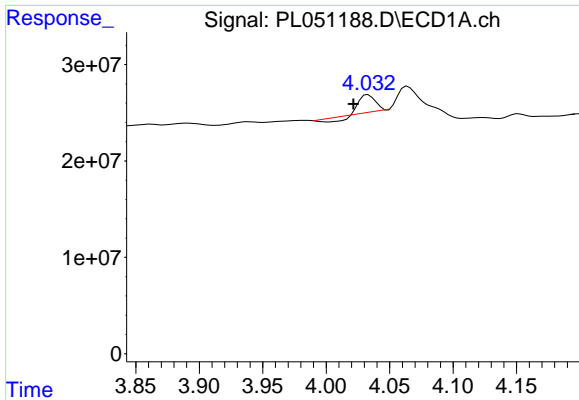
#1 Tetrachloro-m-xylene
 R.T.: 3.928 min
 Delta R.T.: -0.002 min
 Response: 63970152
 Conc: 22.42 ng/ml



#2 alpha-BHC
 R.T.: 3.732 min
 Delta R.T.: -0.013 min
 Response: 22113975
 Conc: 1.32 ng/ml

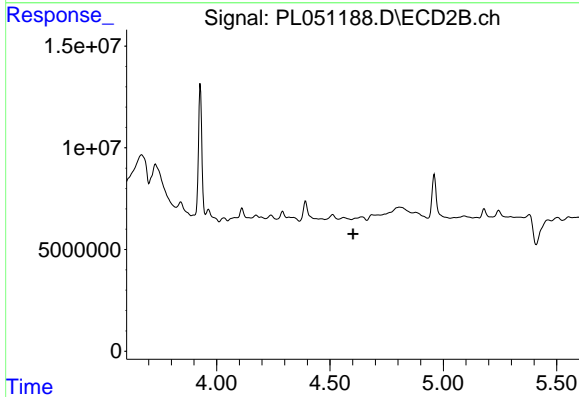


#2 alpha-BHC
 R.T.: 4.291 min
 Delta R.T.: -0.028 min
 Response: 3429830
 Conc: 0.83 ng/ml

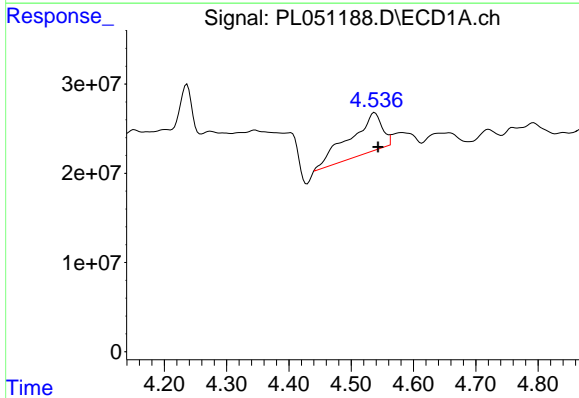


#3 gamma-BHC (Lindane)
 R.T.: 4.033 min
 Delta R.T.: 0.012 min
 Response: 12498466
 Conc: 0.81 ng/ml

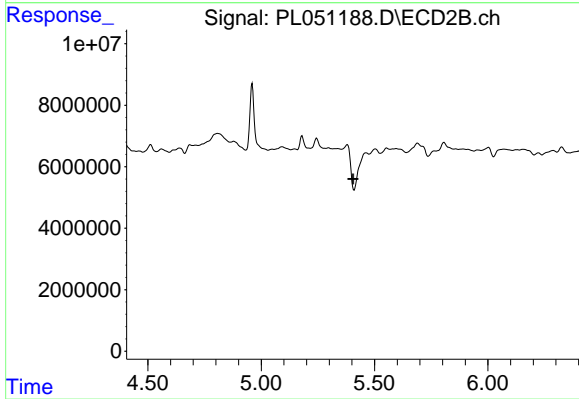
Instrument :
 ECD_L
 ClientSampleId :



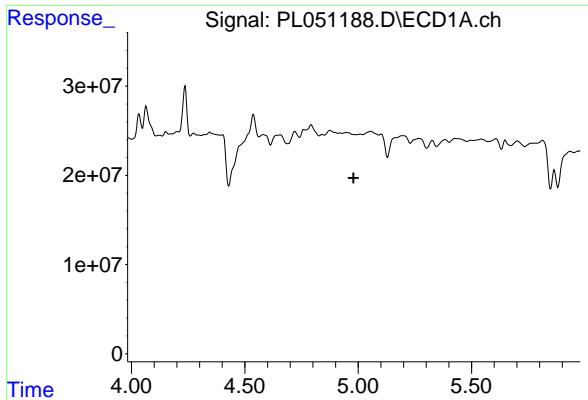
#3 gamma-BHC (Lindane)
 R.T.: 0.000 min
 Exp R.T. : 4.602 min
 Response: 0
 Conc: N.D.



#5 Aldrin
 R.T.: 4.538 min
 Delta R.T.: -0.005 min
 Response: 156869301
 Conc: 10.13 ng/ml

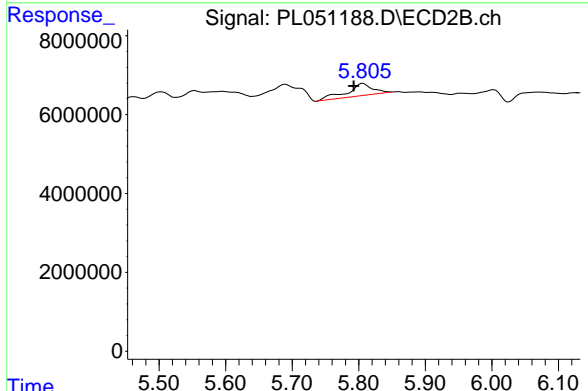


#5 Aldrin
 R.T.: 0.000 min
 Exp R.T. : 5.405 min
 Response: 0
 Conc: N.D.

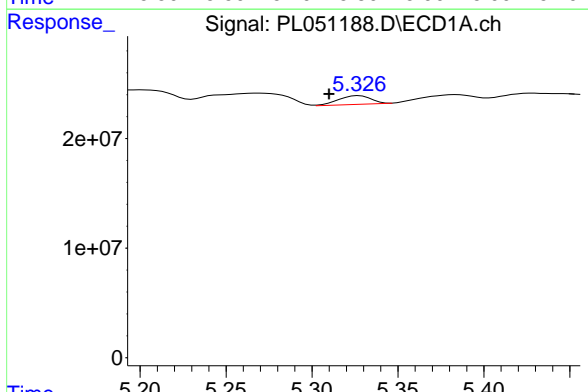


#8 Heptachlor epoxide
 R.T.: 0.000 min
 Exp R.T.: 4.979 min
 Response: 0
 Conc: N.D.

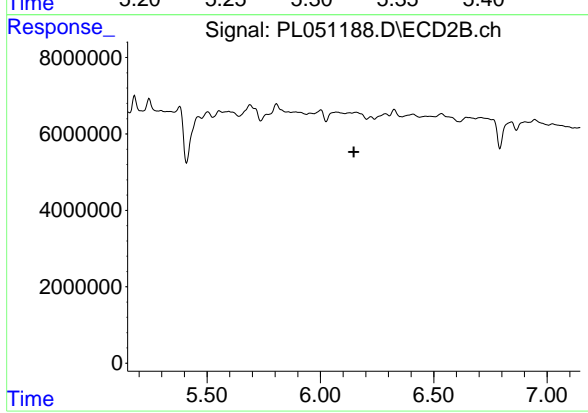
Instrument :
 ECD_L
 ClientSampled :



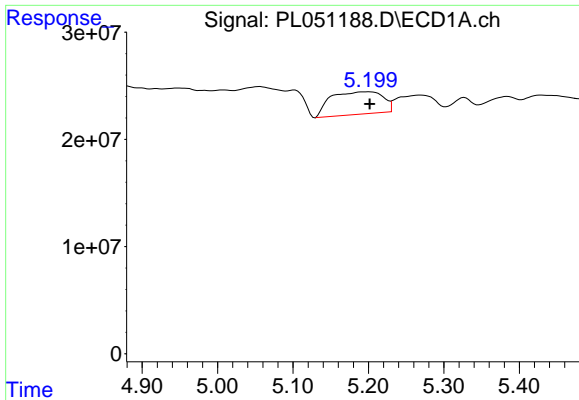
#8 Heptachlor epoxide
 R.T.: 5.806 min
 Delta R.T.: 0.014 min
 Response: 8088055
 Conc: 2.11 ng/ml



#9 Endosulfan I
 R.T.: 5.327 min
 Delta R.T.: 0.017 min
 Response: 10378905
 Conc: 0.71 ng/ml

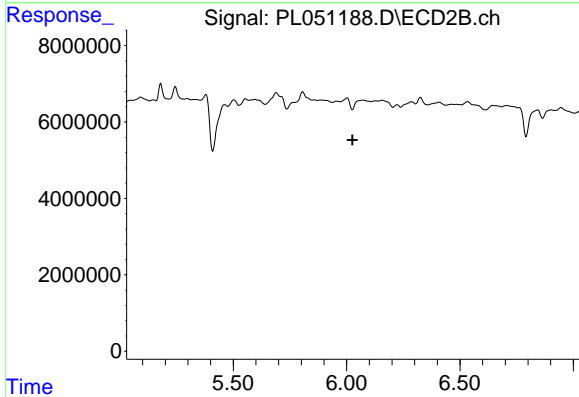


#9 Endosulfan I
 R.T.: 0.000 min
 Exp R.T.: 6.148 min
 Response: 0
 Conc: N.D.

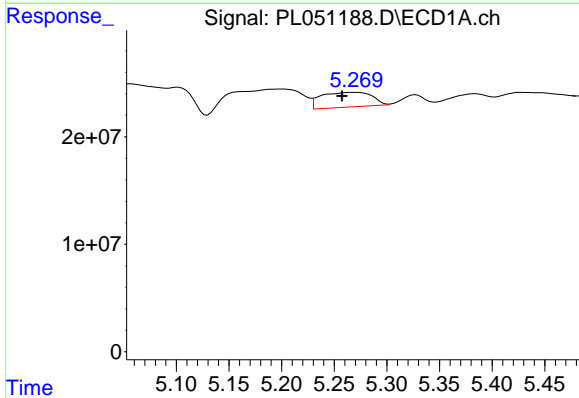


#10 gamma-Chlordane
 R.T.: 5.201 min
 Delta R.T.: 0.000 min
 Response: 100119269
 Conc: 6.34 ng/ml

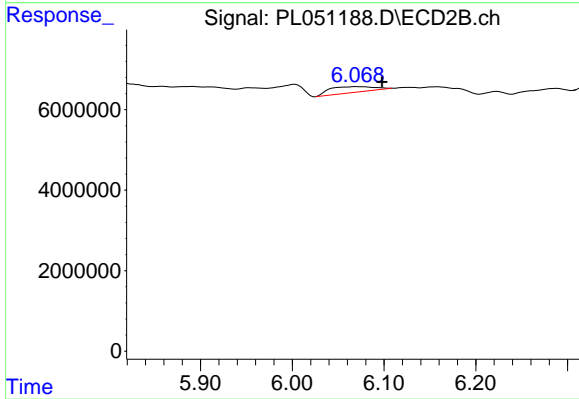
Instrument :
 ECD_L
 ClientSampleId :



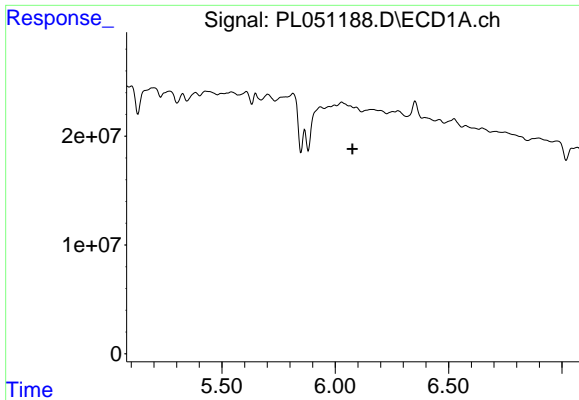
#10 gamma-Chlordane
 R.T.: 0.000 min
 Exp R.T. : 6.026 min
 Response: 0
 Conc: N.D.



#11 alpha-Chlordane
 R.T.: 5.270 min
 Delta R.T.: 0.012 min
 Response: 45848042
 Conc: 3.01 ng/ml



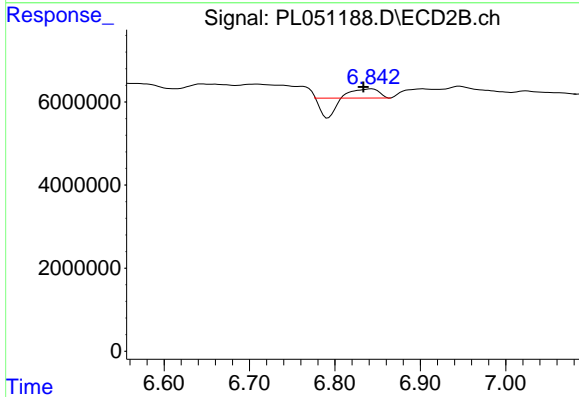
#11 alpha-Chlordane
 R.T.: 6.070 min
 Delta R.T.: -0.028 min
 Response: 4898793
 Conc: 1.34 ng/ml



#15 Endosulfan II

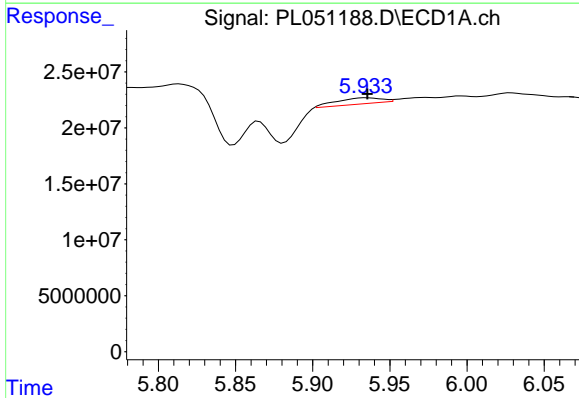
R.T.: 0.000 min
 Exp R.T.: 6.076 min
 Response: 0
 Conc: N.D.

Instrument :
 ECD_L
 ClientSampled :



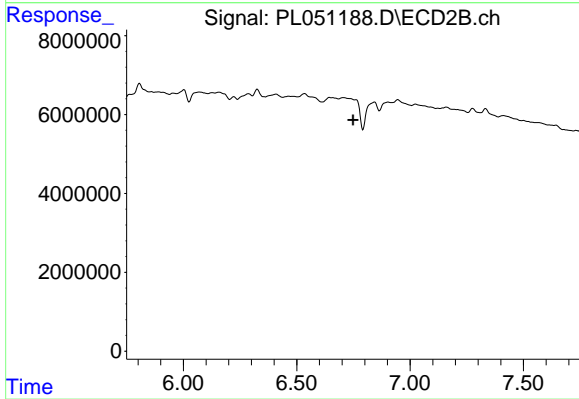
#15 Endosulfan II

R.T.: 6.843 min
 Delta R.T.: 0.010 min
 Response: 611833
 Conc: 0.19 ng/ml



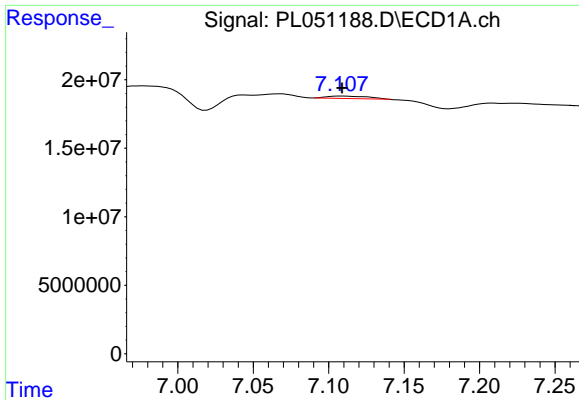
#16 4,4'-DDD

R.T.: 5.934 min
 Delta R.T.: 0.000 min
 Response: 10855643
 Conc: 0.91 ng/ml



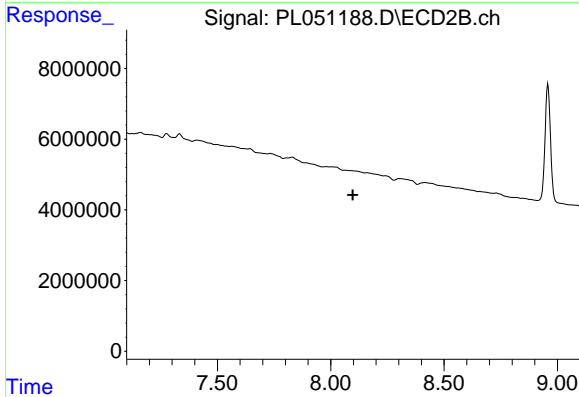
#16 4,4'-DDD

R.T.: 0.000 min
 Exp R.T.: 6.749 min
 Response: 0
 Conc: N.D.

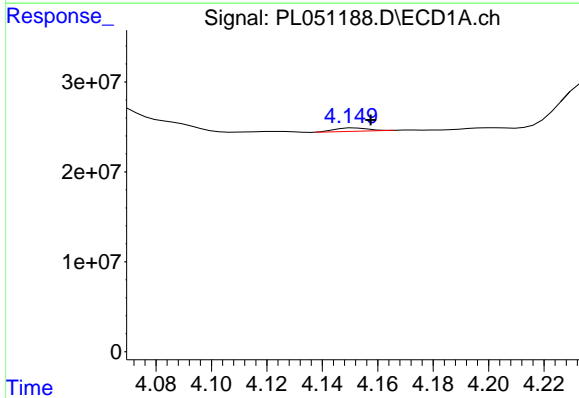


#22 Mirex
 R.T.: 7.108 min
 Delta R.T.: 0.000 min
 Response: 3149140
 Conc: 0.32 ng/ml

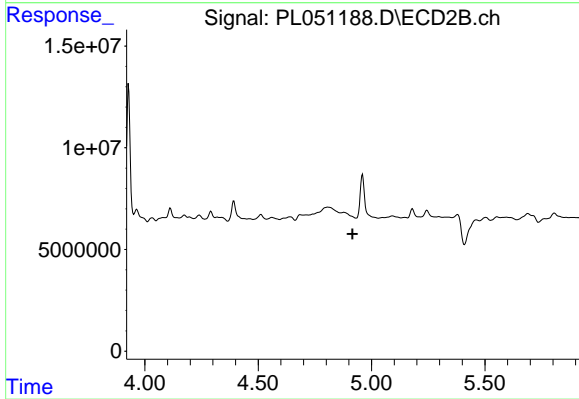
Instrument :
 ECD_L
 ClientSampled :



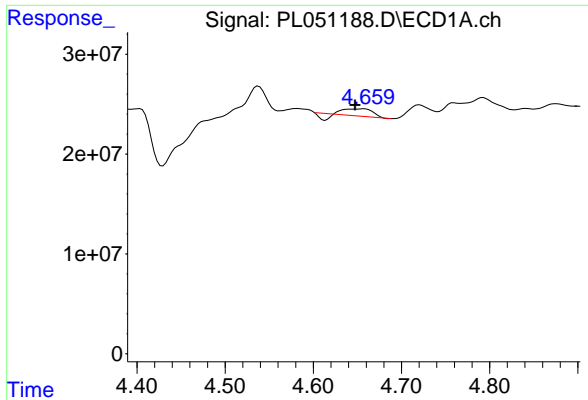
#22 Mirex
 R.T.: 0.000 min
 Exp R.T. : 8.097 min
 Response: 0
 Conc: N.D.



#23 Chlordane-1
 R.T.: 4.152 min
 Delta R.T.: -0.005 min
 Response: 3113386
 Conc: 8.46 ng/ml

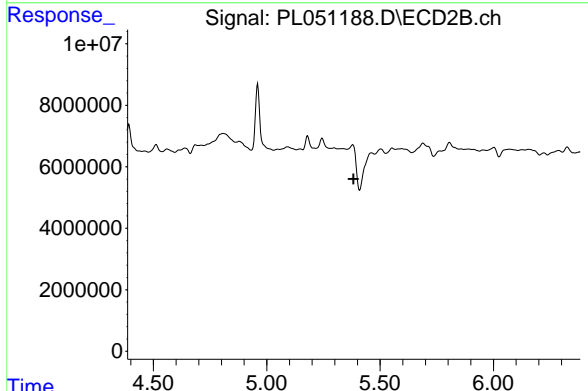


#23 Chlordane-1
 R.T.: 0.000 min
 Exp R.T. : 4.916 min
 Response: 0
 Conc: N.D.

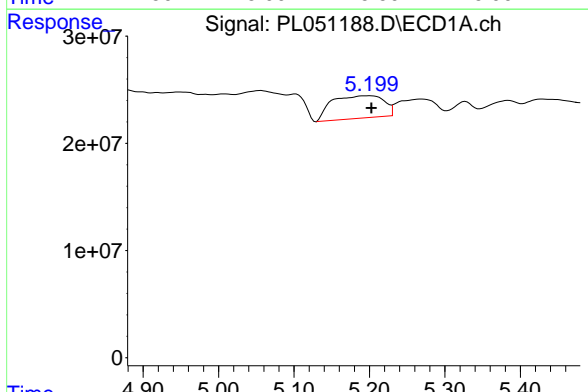


#24 Chlordane-2
 R.T.: 4.658 min
 Delta R.T.: 0.011 min
 Response: 12304265
 Conc: 27.49 ng/ml

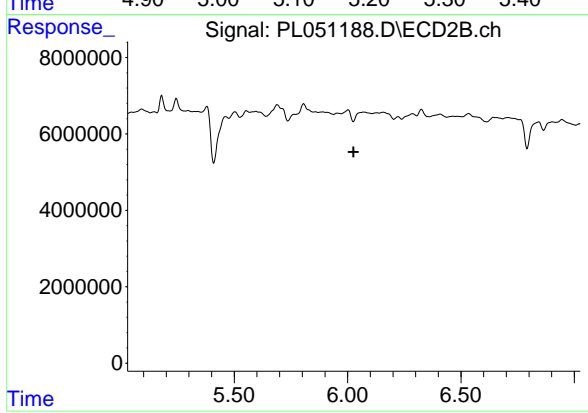
Instrument :
 ECD_L
 ClientSampled :



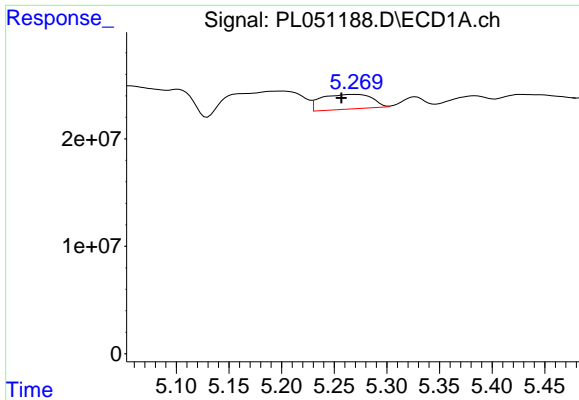
#24 Chlordane-2
 R.T.: 0.000 min
 Exp R.T. : 5.383 min
 Response: 0
 Conc: N.D.



#25 Chlordane-3
 R.T.: 5.201 min
 Delta R.T.: -0.002 min
 Response: 100119269
 Conc: 71.52 ng/ml

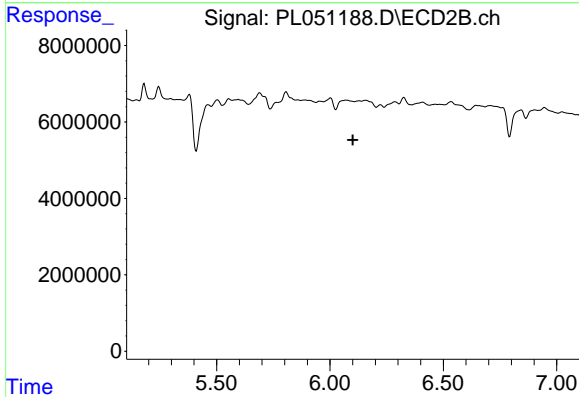


#25 Chlordane-3
 R.T.: 0.000 min
 Exp R.T. : 6.027 min
 Response: 0
 Conc: N.D.

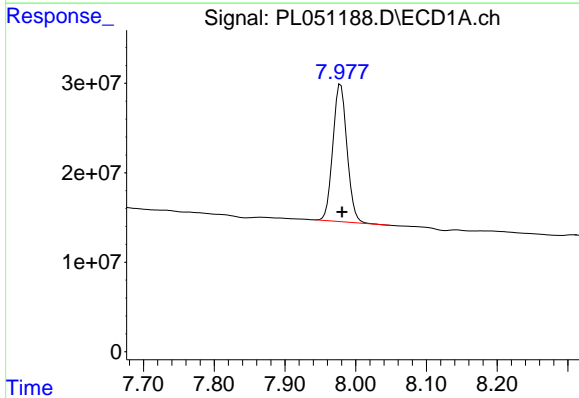


#26 Chlordane-4
 R.T.: 5.270 min
 Delta R.T.: 0.013 min
 Response: 45848042
 Conc: 34.76 ng/ml

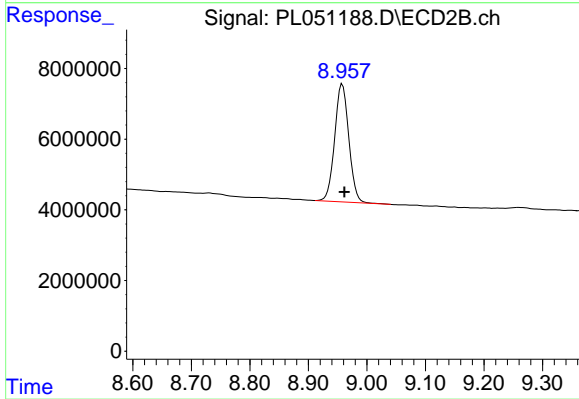
Instrument :
 ECD_L
 ClientSampled :



#26 Chlordane-4
 R.T.: 0.000 min
 Exp R.T. : 6.100 min
 Response: 0
 Conc: N.D.



#28 Decachlorobiphenyl
 R.T.: 7.979 min
 Delta R.T.: -0.002 min
 Response: 213644573
 Conc: 21.10 ng/ml



#28 Decachlorobiphenyl
 R.T.: 8.958 min
 Delta R.T.: -0.004 min
 Response: 56014354
 Conc: 19.81 ng/ml