

Data Path : Z:\pestpcbsrv\HPCHEM1\ECD_L\Data\PL080818\
 Data File : PL039041.D
 Signal(s) : Signal #1: ECD1A.ch Signal #2: ECD2B.ch
 Acq On : 08 Aug 2018 19:15
 Operator : AJ\SJ
 Sample : J4360-03MS
 Misc :
 ALS Vial : 25 Sample Multiplier: 1

Instrument :
 ECD_L
ClientSampled :
 155-SOILMS

Manual Integrations
APPROVED

Sohil
 8/9/2018 9:58:44 AM

Integration File signal 1: autoint1.e
 Integration File signal 2: autoint2.e
 Quant Time: Aug 09 01:08:50 2018
 Quant Method : Z:\PESTPCBSRV\HPCHEM1\ECD_L\methods\PL071318.M
 Quant Title : GC Extractables
 QLast Update : Sat Jul 14 00:12:12 2018
 Response via : Initial Calibration
 Integrator: ChemStation

Volume Inj. : 2 µl
 Signal #1 Phase : ZB-MR2 Signal #2 Phase: ZB-MR2
 Signal #1 Info : 30M x 0.32mm x0.5 Signal #2 Info : 30M x 0.32mm x0.25µm

	Compound	RT#1	RT#2	Resp#1	Resp#2	ng/ml	ng/ml

System Monitoring Compounds							
1)	SA Tetrachlo...	3.323	3.927	143.2E6	61284104	19.233	23.347
28)	SA Decachlor...	7.991	8.934	105.9E6	44157913	13.961	18.065 #
Target Compounds							
2)	A alpha-BHC	3.751	4.304	672.7E6	257.9E6	56.938m	66.629m
3)	MA gamma-BHC...	4.028	4.584	596.8E6	241.6E6	56.926	66.890m
4)	MA Heptachlor	4.311	5.096	572.0E6	215.1E6	53.775	67.287 #
5)	MB Aldrin	4.549	5.398	545.0E6	201.7E6	52.065	65.364 #
6)	B beta-BHC	4.283	4.748	271.8E6	107.6E6	57.585	70.913
7)	B delta-BHC	4.476	4.962	647.9E6	243.0E6	59.695	73.259
8)	B Heptachlo...	4.985	5.778	561.1E6	196.1E6	59.516m	68.993
9)	A Endosulfan I	5.317	6.131	475.7E6	179.0E6	54.996	69.616 #
10)	B gamma-Chl...	5.209	6.011	571.5E6	190.5E6	57.825	65.698
11)	B alpha-Chl...	5.265	6.084	546.2E6	190.6E6	57.701	66.492
12)	B 4,4'-DDE	5.434	6.239	538.6E6	178.4E6	56.176	66.726m
13)	MA Dieldrin	5.557	6.383	571.1E6	181.6E6	59.423	66.736m
14)	MA Endrin	5.810	6.599	524.2E6	155.5E6	60.337	65.096
15)	B Endosulfa...	6.084	6.803	486.8E6	148.4E6	61.388m	61.785
16)	A 4,4'-DDD	5.945	6.722	475.0E6	129.7E6	64.754	60.582
17)	MA 4,4'-DDT	6.179	7.021	422.8E6	124.0E6	56.908	58.168
18)	B Endrin al...	6.253	6.925	373.0E6	124.8E6	58.572	63.976
19)	B Endosulfa...	6.464	7.147	467.2E6	127.8E6	61.851	58.607
20)	A Methoxychlor	6.728	7.477	227.0E6	75037769	58.999	65.900
21)	B Endrin ke...	6.947	7.612	456.0E6	139.6E6	58.119	58.581

(f)=RT Delta > 1/2 Window (#)=Amounts differ by > 25% (m)=manual int.

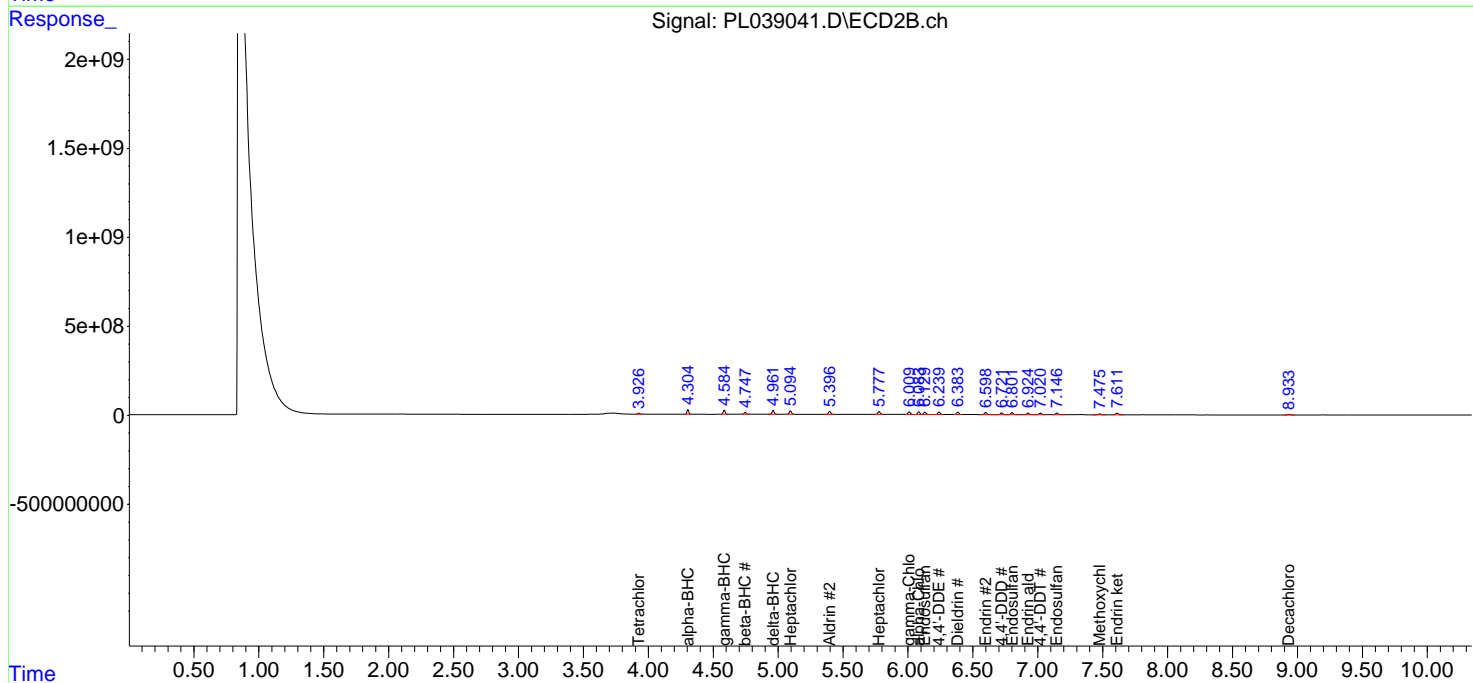
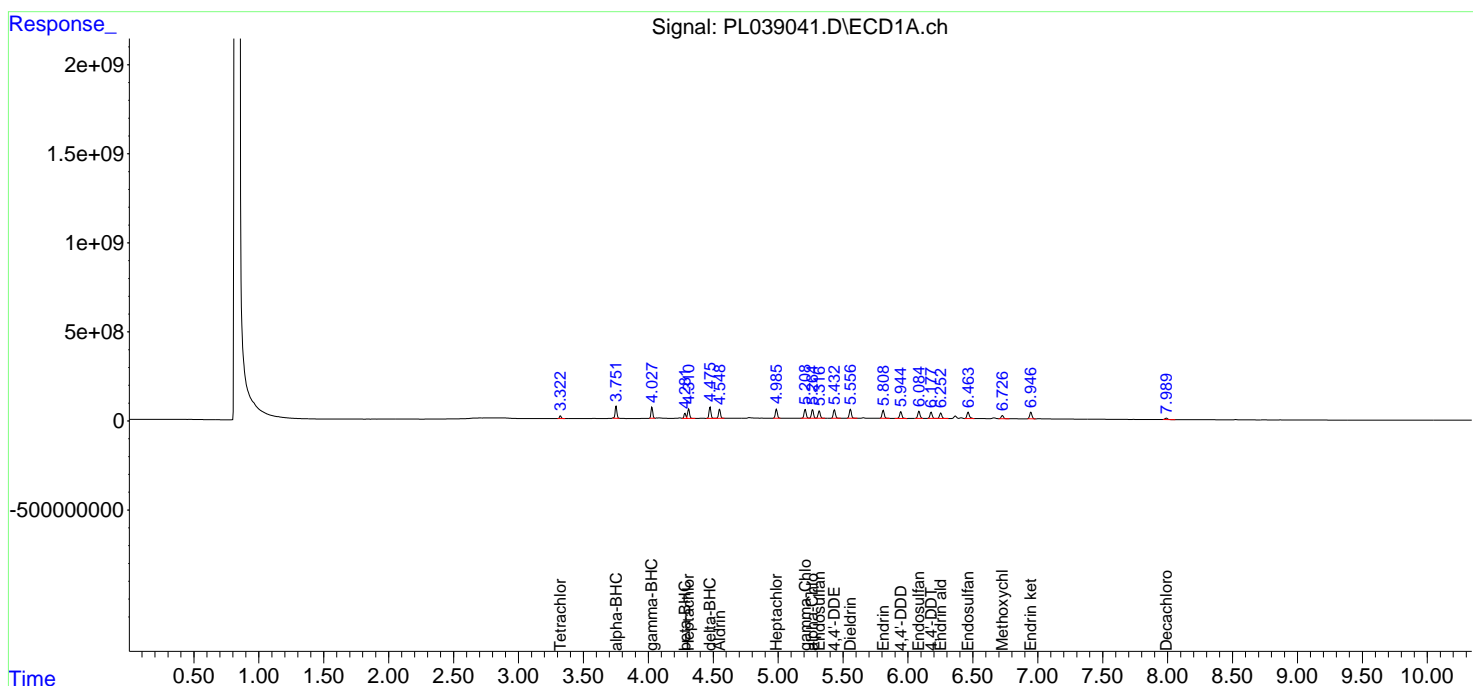
Data Path : Z:\pestpcbsrv\HPCHEM1\ECD_L\Data\PL080818\
 Data File : PL039041.D
 Signal(s) : Signal #1: ECD1A.ch Signal #2: ECD2B.ch
 Acq On : 08 Aug 2018 19:15
 Operator : AJ\SJ
 Sample : J4360-03MS
 Misc :
 ALS Vial : 25 Sample Multiplier: 1

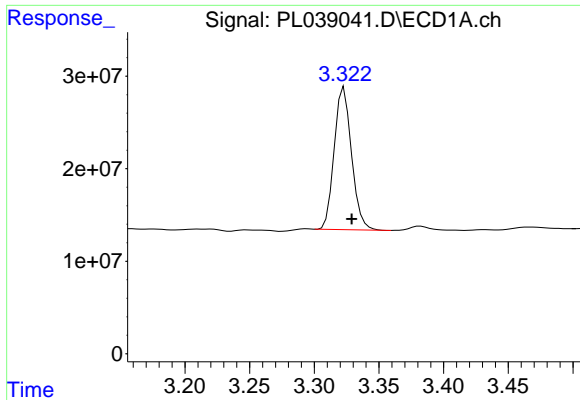
Instrument :
 ECD_L
 Client Sampled :
 155-SOILMS

Manual Integrations
APPROVED
 Sohil
 8/9/2018 9:58:44 AM

Integration File signal 1: autoint1.e
 Integration File signal 2: autoint2.e
 Quant Time: Aug 09 01:08:50 2018
 Quant Method : Z:\PESTPCBSRV\HPCHEM1\ECD_L\methods\PL071318.M
 Quant Title : GC Extractables
 QLast Update : Sat Jul 14 00:12:12 2018
 Response via : Initial Calibration
 Integrator: ChemStation

Volume Inj. : 2 µl
 Signal #1 Phase : ZB-MR1 Signal #2 Phase: ZB-MR2
 Signal #1 Info : 30M x 0.32mm x0.5 Signal #2 Info : 30M x 0.32mm x0.25µm

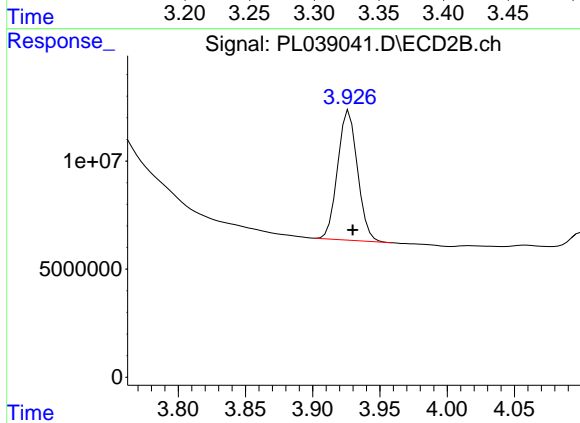




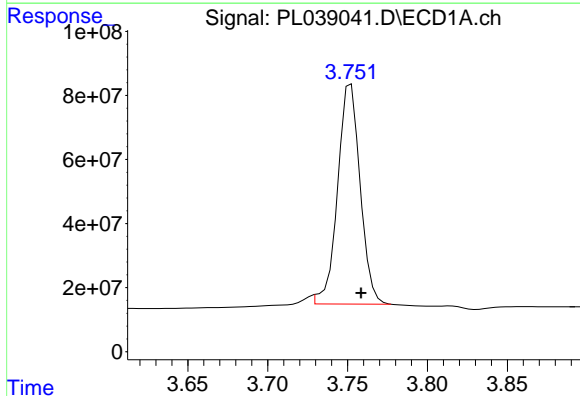
#1 Tetrachloro-m-xylene
 R.T.: 3.323 min
 Delta R.T.: -0.006 min
 Response: 143219239
 Conc: 19.23 ng/ml

Instrument :
 ECD_L
 ClientSampled :
 155-SOILMS

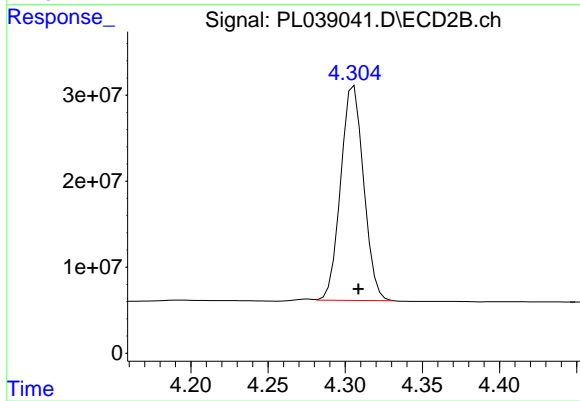
Manual Integrations
 APPROVED
 Sohil
 8/9/2018 9:58:44 AM



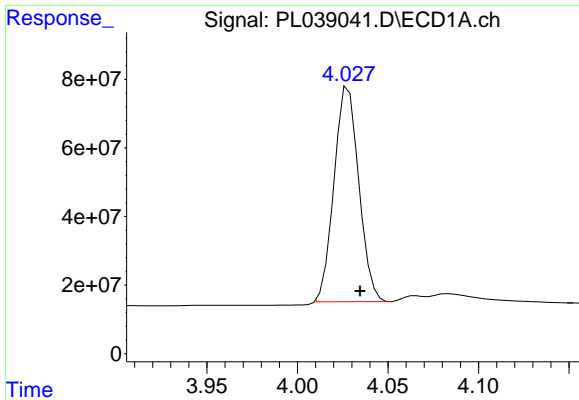
#1 Tetrachloro-m-xylene
 R.T.: 3.927 min
 Delta R.T.: -0.003 min
 Response: 61284104
 Conc: 23.35 ng/ml



#2 alpha-BHC
 R.T.: 3.751 min
 Delta R.T.: -0.008 min
 Response: 672748869
 Conc: 56.94 ng/ml m



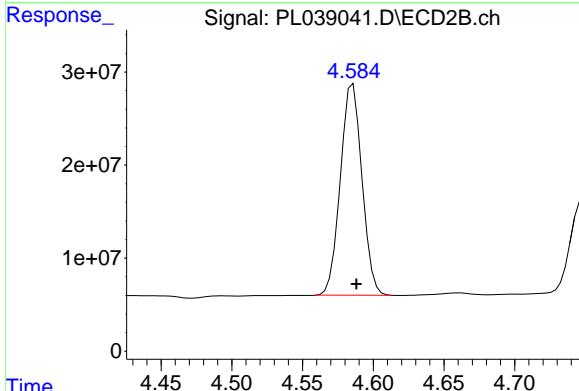
#2 alpha-BHC
 R.T.: 4.304 min
 Delta R.T.: -0.004 min
 Response: 257866370
 Conc: 66.63 ng/ml m



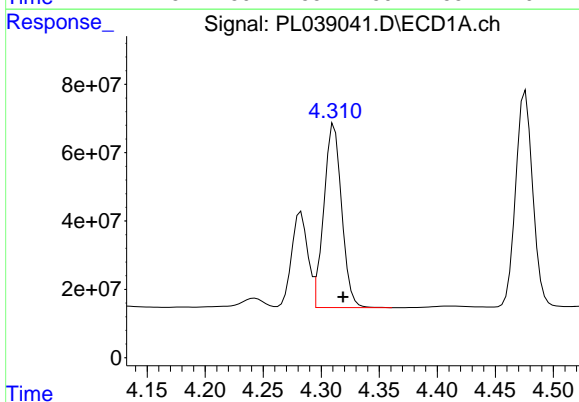
#3 gamma-BHC (Lindane)
 R.T.: 4.028 min
 Delta R.T.: -0.006 min
 Response: 596801515
 Conc: 56.93 ng/ml

Instrument :
 ECD_L
 ClientSampled :
 155-SOILMS

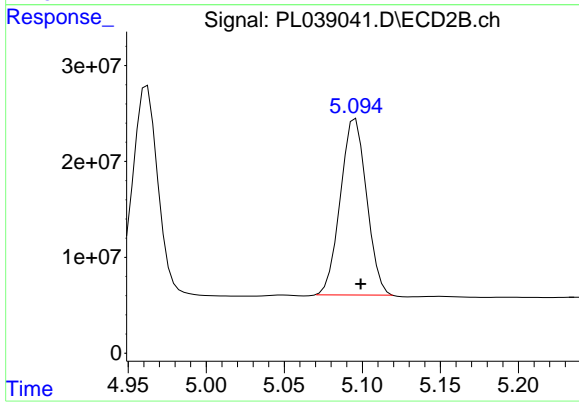
Manual Integrations
 APPROVED
 Sohil
 8/9/2018 9:58:44 AM



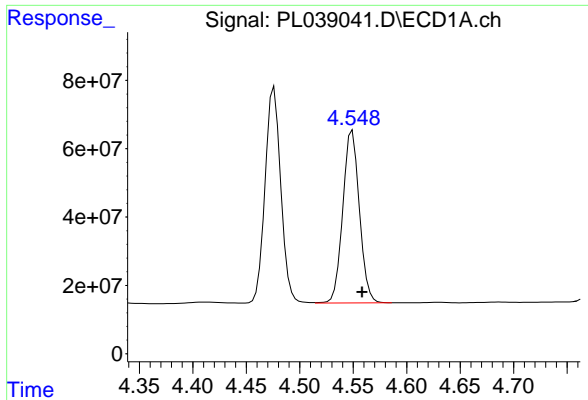
#3 gamma-BHC (Lindane)
 R.T.: 4.584 min
 Delta R.T.: -0.004 min
 Response: 241593494
 Conc: 66.89 ng/ml m



#4 Heptachlor
 R.T.: 4.311 min
 Delta R.T.: -0.008 min
 Response: 572026648
 Conc: 53.78 ng/ml



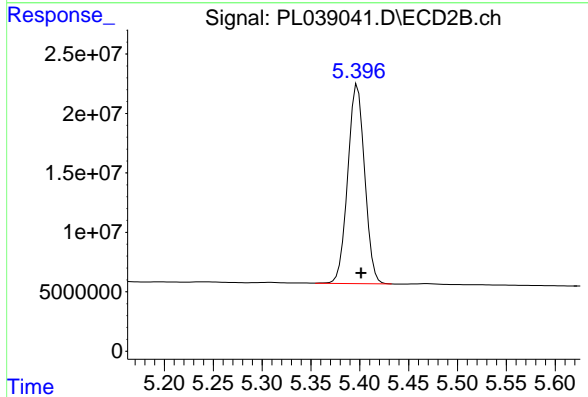
#4 Heptachlor
 R.T.: 5.096 min
 Delta R.T.: -0.003 min
 Response: 215063552
 Conc: 67.29 ng/ml



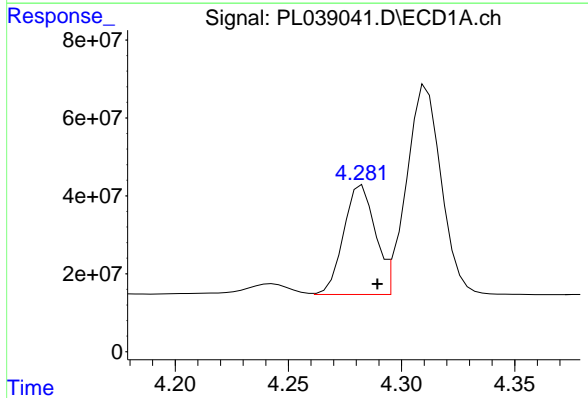
#5 Aldrin
 R.T.: 4.549 min
 Delta R.T.: -0.009 min
 Response: 544979174
 Conc: 52.06 ng/ml

Instrument :
 ECD_L
ClientSampled :
 155-SOILMS

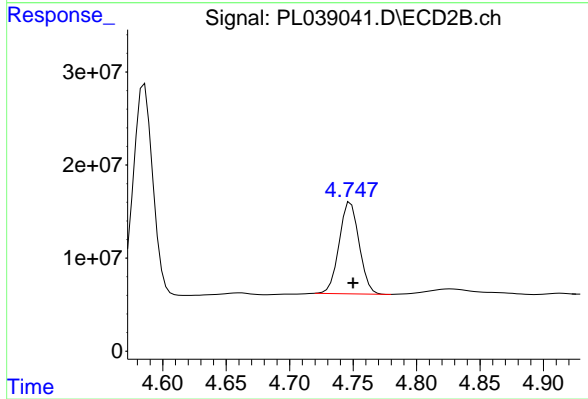
Manual Integrations
APPROVED
 Sohil
 8/9/2018 9:58:44 AM



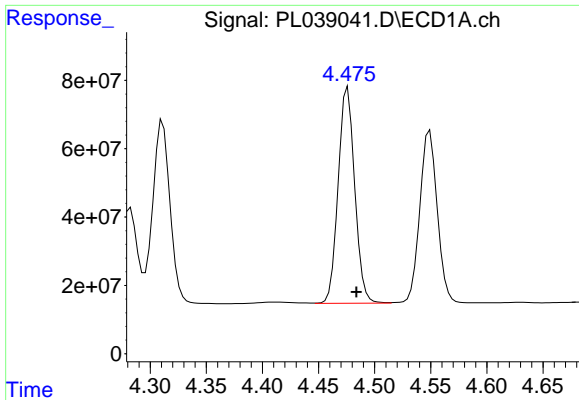
#5 Aldrin
 R.T.: 5.398 min
 Delta R.T.: -0.004 min
 Response: 201728075
 Conc: 65.36 ng/ml



#6 beta-BHC
 R.T.: 4.283 min
 Delta R.T.: -0.007 min
 Response: 271821855
 Conc: 57.59 ng/ml



#6 beta-BHC
 R.T.: 4.748 min
 Delta R.T.: -0.002 min
 Response: 107567374
 Conc: 70.91 ng/ml

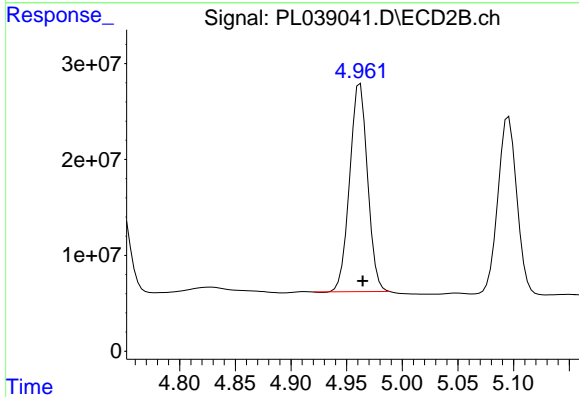


#7 delta-BHC

R.T.: 4.476 min
 Delta R.T.: -0.008 min
 Response: 647941940
 Conc: 59.70 ng/ml

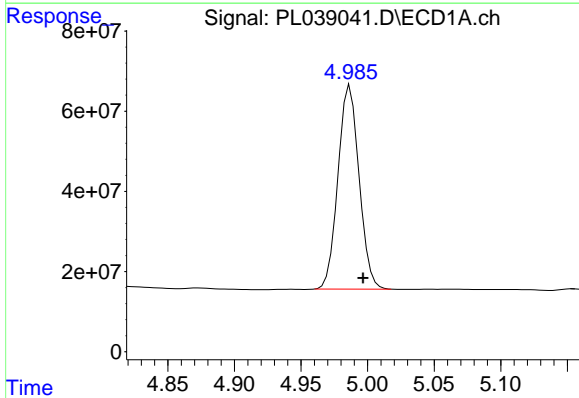
Instrument :
 ECD_L
 ClientSampled :
 155-SOILMS

Manual Integrations
 APPROVED
 Sohil
 8/9/2018 9:58:44 AM



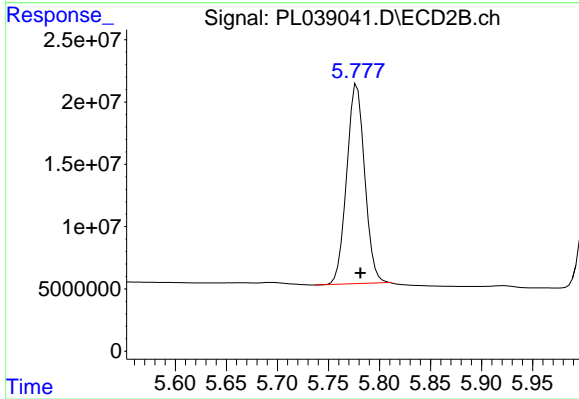
#7 delta-BHC

R.T.: 4.962 min
 Delta R.T.: -0.002 min
 Response: 242969849
 Conc: 73.26 ng/ml



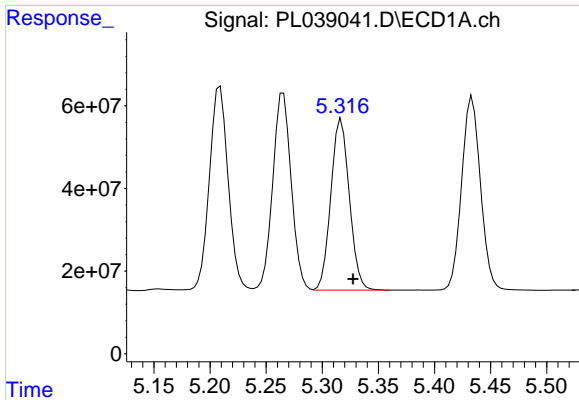
#8 Heptachlor epoxide

R.T.: 4.985 min
 Delta R.T.: -0.011 min
 Response: 561143888
 Conc: 59.52 ng/ml m



#8 Heptachlor epoxide

R.T.: 5.778 min
 Delta R.T.: -0.003 min
 Response: 196071863
 Conc: 68.99 ng/ml

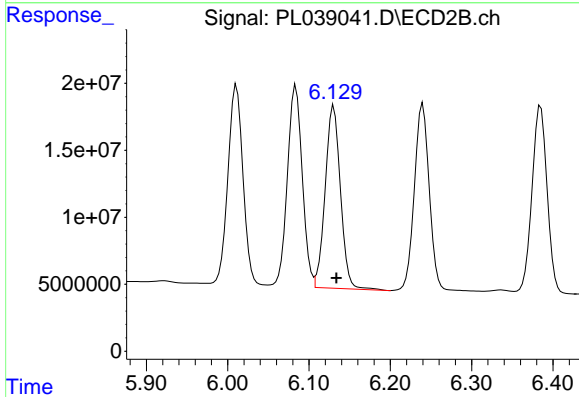


#9 Endosulfan I

R.T.: 5.317 min
 Delta R.T.: -0.011 min
 Response: 475693331
 Conc: 55.00 ng/ml

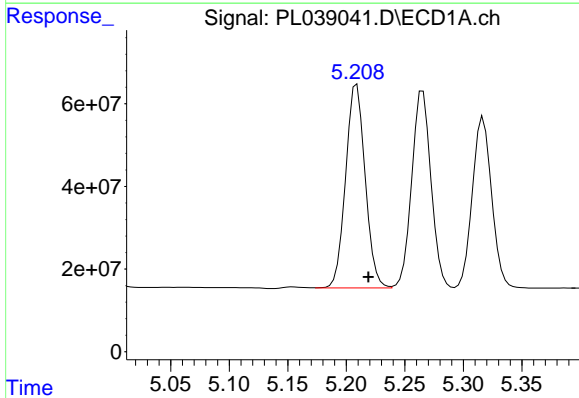
Instrument :
 ECD_L
ClientSampled :
 155-SOILMS

Manual Integrations
APPROVED
 Sohil
 8/9/2018 9:58:44 AM



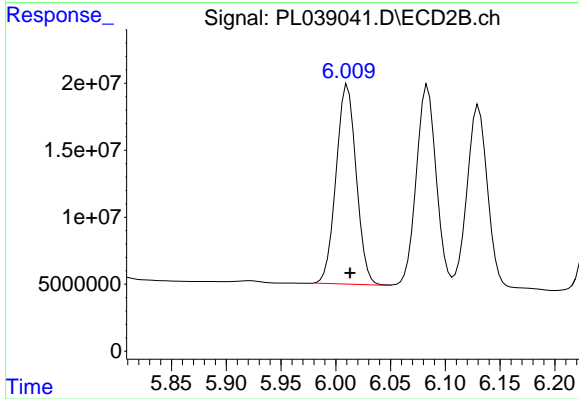
#9 Endosulfan I

R.T.: 6.131 min
 Delta R.T.: -0.003 min
 Response: 179036271
 Conc: 69.62 ng/ml



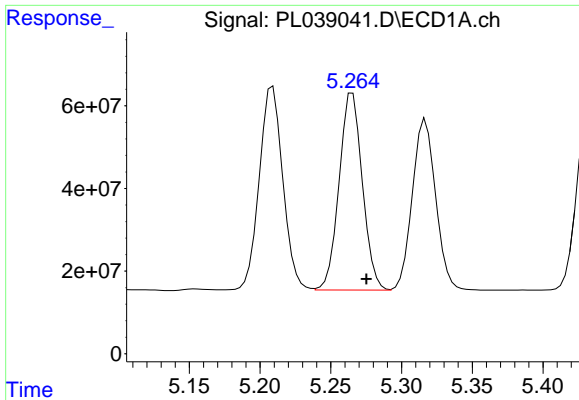
#10 gamma-Chlordane

R.T.: 5.209 min
 Delta R.T.: -0.010 min
 Response: 571541721
 Conc: 57.83 ng/ml



#10 gamma-Chlordane

R.T.: 6.011 min
 Delta R.T.: -0.002 min
 Response: 190472255
 Conc: 65.70 ng/ml

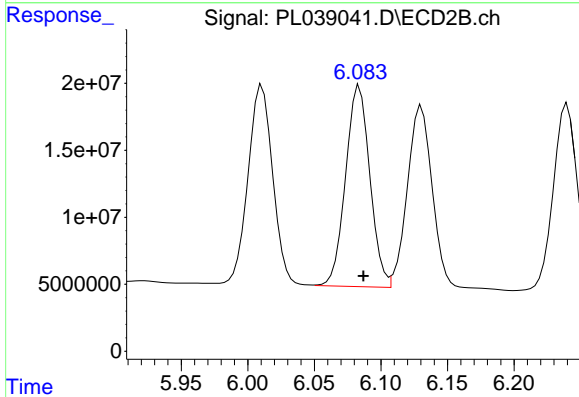


#11 alpha-Chlordane

R.T.: 5.265 min
 Delta R.T.: -0.010 min
 Response: 546188404
 Conc: 57.70 ng/ml

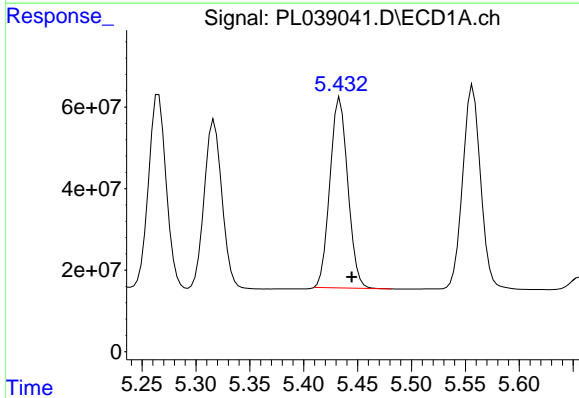
Instrument :
 ECD_L
 ClientSampled :
 155-SOILMS

Manual Integrations
 APPROVED
 Sohil
 8/9/2018 9:58:44 AM



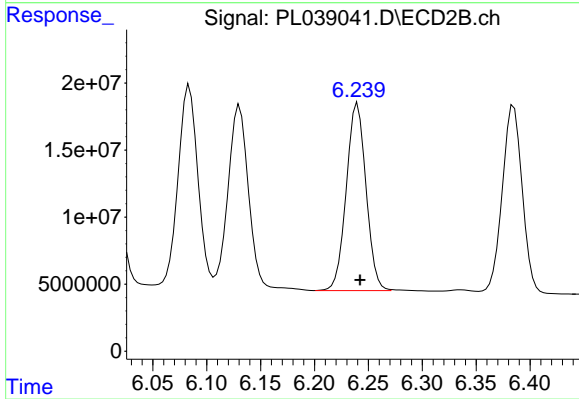
#11 alpha-Chlordane

R.T.: 6.084 min
 Delta R.T.: -0.003 min
 Response: 190581893
 Conc: 66.49 ng/ml



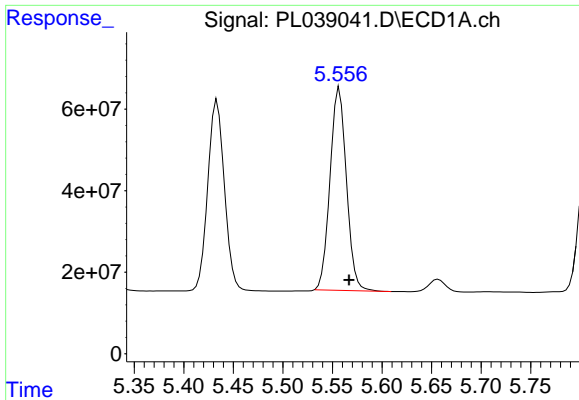
#12 4,4'-DDE

R.T.: 5.434 min
 Delta R.T.: -0.011 min
 Response: 538608260
 Conc: 56.18 ng/ml



#12 4,4'-DDE

R.T.: 6.239 min
 Delta R.T.: -0.004 min
 Response: 178430283
 Conc: 66.73 ng/ml m

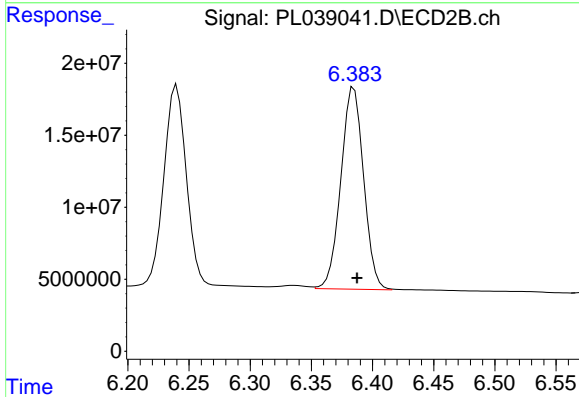


#13 Dieldrin

R.T.: 5.557 min
 Delta R.T.: -0.010 min
 Response: 571066555
 Conc: 59.42 ng/ml

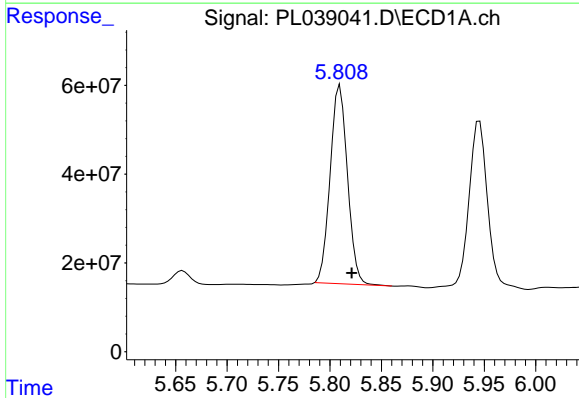
Instrument :
 ECD_L
 ClientSampled :
 155-SOILMS

Manual Integrations
 APPROVED
 Sohil
 8/9/2018 9:58:44 AM



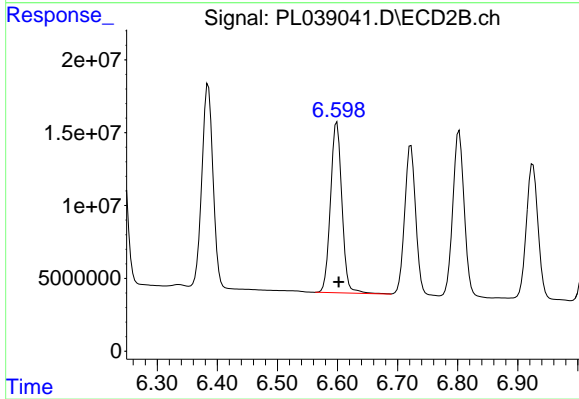
#13 Dieldrin

R.T.: 6.383 min
 Delta R.T.: -0.004 min
 Response: 181639811
 Conc: 66.74 ng/ml m



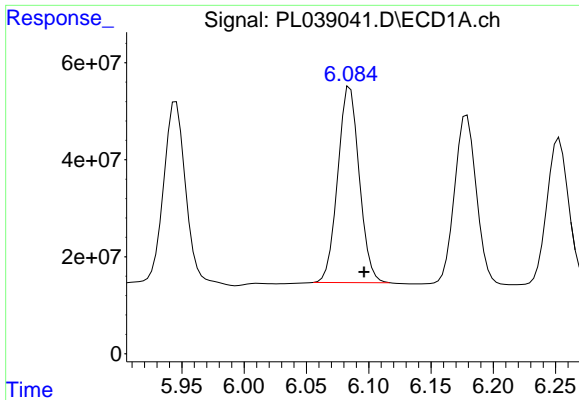
#14 Endrin

R.T.: 5.810 min
 Delta R.T.: -0.011 min
 Response: 524232972
 Conc: 60.34 ng/ml



#14 Endrin

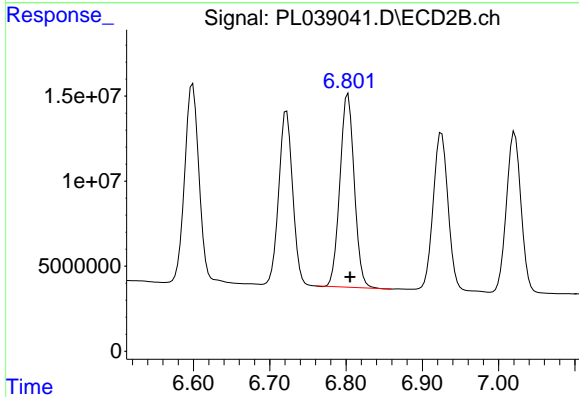
R.T.: 6.599 min
 Delta R.T.: -0.003 min
 Response: 155457507
 Conc: 65.10 ng/ml



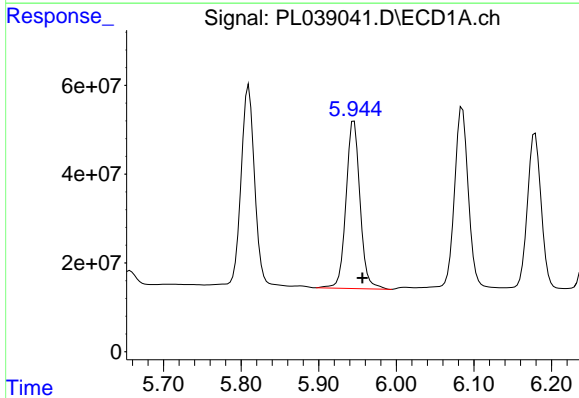
#15 Endosulfan II
 R.T.: 6.084 min
 Delta R.T.: -0.013 min
 Response: 486813738
 Conc: 61.39 ng/ml m

Instrument :
 ECD_L
ClientSampled :
 155-SOILMS

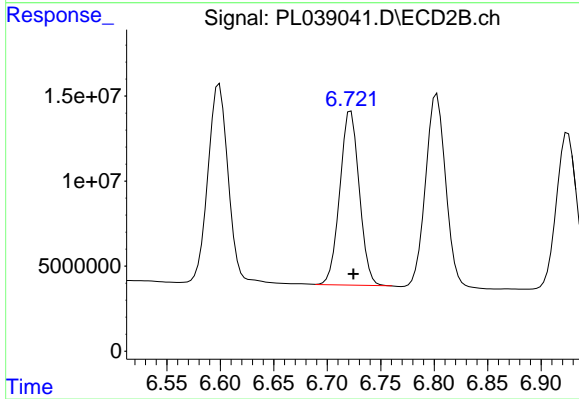
Manual Integrations
APPROVED
 Sohil
 8/9/2018 9:58:44 AM



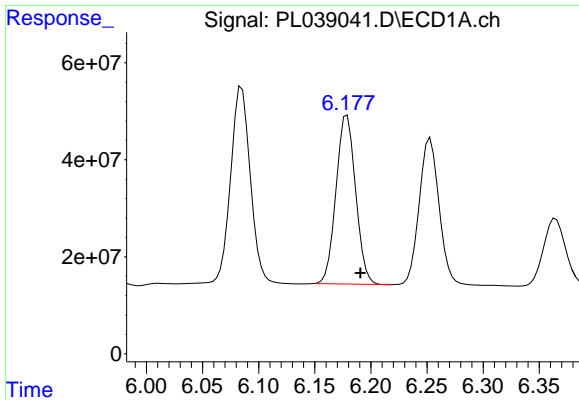
#15 Endosulfan II
 R.T.: 6.803 min
 Delta R.T.: -0.003 min
 Response: 148370425
 Conc: 61.78 ng/ml



#16 4,4'-DDD
 R.T.: 5.945 min
 Delta R.T.: -0.011 min
 Response: 475008617
 Conc: 64.75 ng/ml



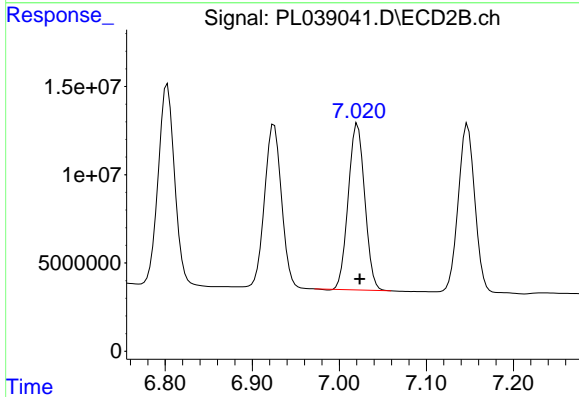
#16 4,4'-DDD
 R.T.: 6.722 min
 Delta R.T.: -0.002 min
 Response: 129671493
 Conc: 60.58 ng/ml



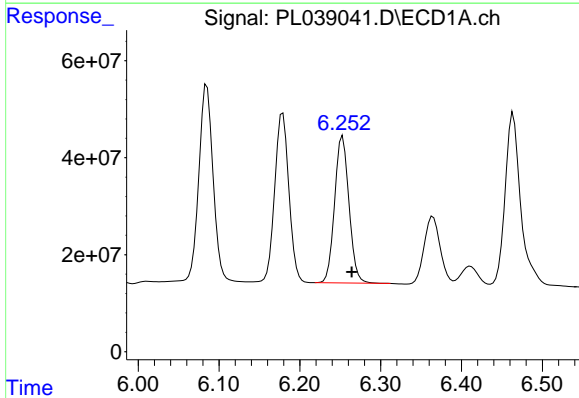
#17 4,4'-DDT
 R.T.: 6.179 min
 Delta R.T.: -0.012 min
 Response: 422752231
 Conc: 56.91 ng/ml

Instrument :
 ECD_L
ClientSampled :
 155-SOILMS

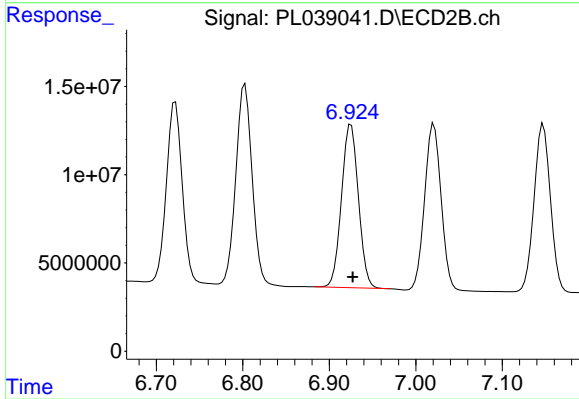
Manual Integrations
APPROVED
 Sohil
 8/9/2018 9:58:44 AM



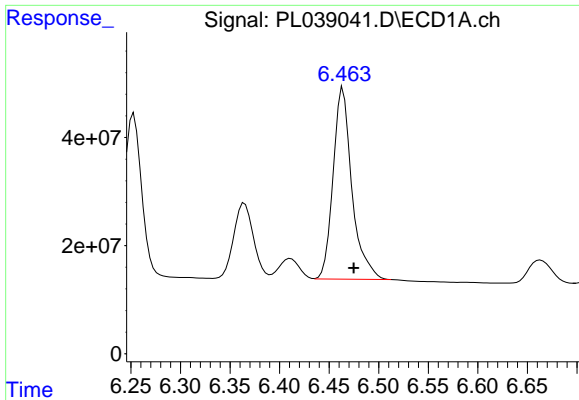
#17 4,4'-DDT
 R.T.: 7.021 min
 Delta R.T.: -0.003 min
 Response: 124016844
 Conc: 58.17 ng/ml



#18 Endrin aldehyde
 R.T.: 6.253 min
 Delta R.T.: -0.011 min
 Response: 372960405
 Conc: 58.57 ng/ml



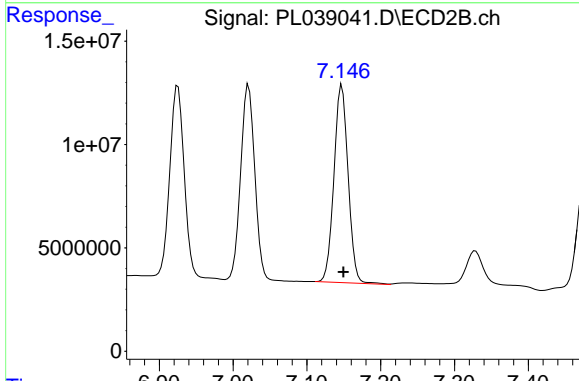
#18 Endrin aldehyde
 R.T.: 6.925 min
 Delta R.T.: -0.002 min
 Response: 124841168
 Conc: 63.98 ng/ml



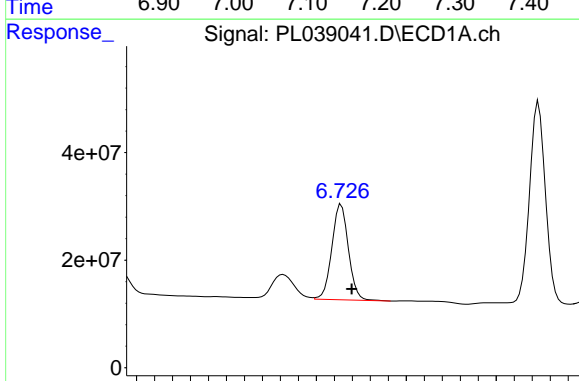
#19 Endosulfan Sulfate
 R.T.: 6.464 min
 Delta R.T.: -0.011 min
 Response: 467176260
 Conc: 61.85 ng/ml

Instrument :
 ECD_L
ClientSampled :
 155-SOILMS

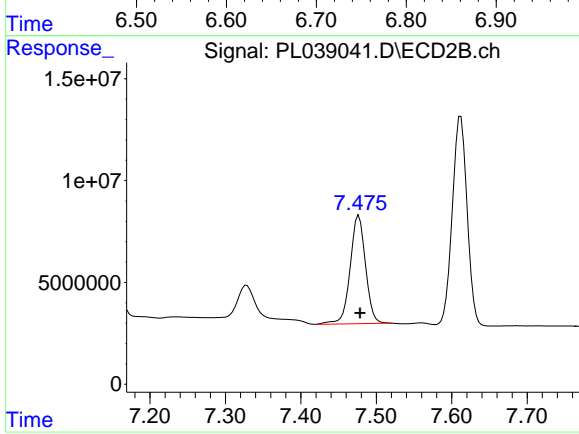
Manual Integrations
APPROVED
 Sohil
 8/9/2018 9:58:44 AM



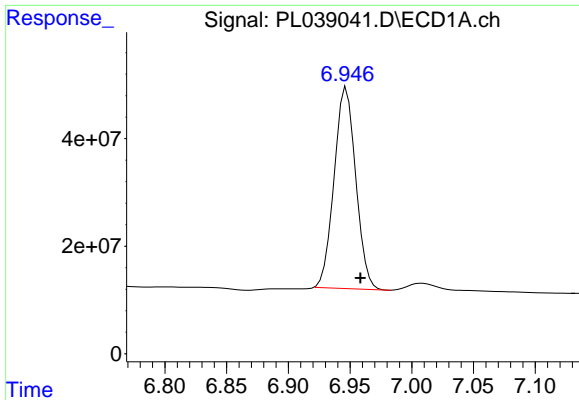
#19 Endosulfan Sulfate
 R.T.: 7.147 min
 Delta R.T.: -0.002 min
 Response: 127750960
 Conc: 58.61 ng/ml



#20 Methoxychlor
 R.T.: 6.728 min
 Delta R.T.: -0.012 min
 Response: 226996915
 Conc: 59.00 ng/ml



#20 Methoxychlor
 R.T.: 7.477 min
 Delta R.T.: -0.001 min
 Response: 75037769
 Conc: 65.90 ng/ml



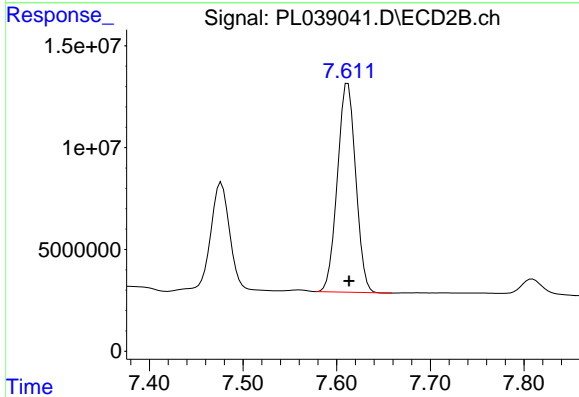
#21 Endrin ketone

R.T.: 6.947 min
 Delta R.T.: -0.011 min
 Response: 455996446
 Conc: 58.12 ng/ml

Instrument :
 ECD_L
 ClientSampled :
 155-SOILMS

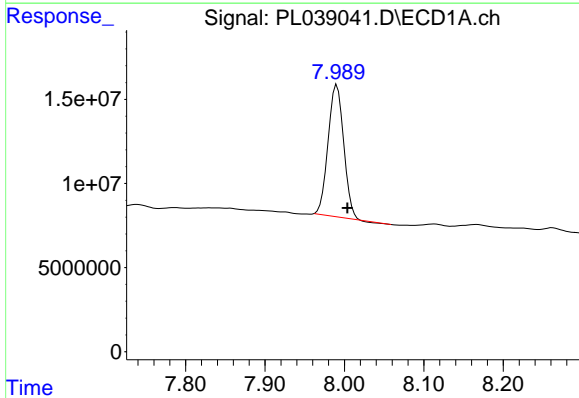
Manual Integrations
 APPROVED

Sohil
 8/9/2018 9:58:44 AM



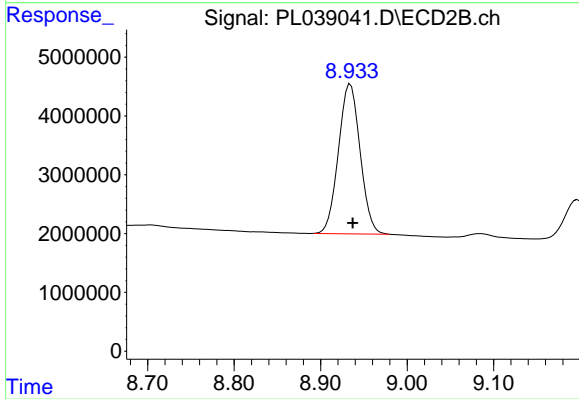
#21 Endrin ketone

R.T.: 7.612 min
 Delta R.T.: -0.001 min
 Response: 139630486
 Conc: 58.58 ng/ml



#28 Decachlorobiphenyl

R.T.: 7.991 min
 Delta R.T.: -0.013 min
 Response: 105906955
 Conc: 13.96 ng/ml



#28 Decachlorobiphenyl

R.T.: 8.934 min
 Delta R.T.: -0.003 min
 Response: 44157913
 Conc: 18.06 ng/ml