

Data Path : Z:\pestpcbsrv\HPCHEM1\ECD_L\Data\PL080818\
 Data File : PL039046.D
 Signal(s) : Signal #1: ECD1A.ch Signal #2: ECD2B.ch
 Acq On : 08 Aug 2018 20:26
 Operator : AJ\SJ
 Sample : PEM
 Misc :
 ALS Vial : 3 Sample Multiplier: 1

Instrument :
 ECD_L
 ClientSampled :
 PEM

Manual Integrations
 APPROVED

Sohil
 8/9/2018 9:58:46 AM

Integration File signal 1: autoint1.e
 Integration File signal 2: autoint2.e
 Quant Time: Aug 09 01:10:44 2018
 Quant Method : Z:\PESTPCBSRV\HPCHEM1\ECD_L\methods\PL071318.M
 Quant Title : GC Extractables
 QLast Update : Sat Jul 14 00:12:12 2018
 Response via : Initial Calibration
 Integrator: ChemStation

Volume Inj. : 2 µl
 Signal #1 Phase : ZB-MR2 Signal #2 Phase: ZB-MR2
 Signal #1 Info : 30M x 0.32mm x0.5 Signal #2 Info : 30M x 0.32mm x0.25µm

Compound	RT#1	RT#2	Resp#1	Resp#2	ng/ml	ng/ml

System Monitoring Compounds						
1) SA Tetrachlo...	3.324	3.927	151.7E6	60982765	20.375	23.232
28) SA Decachlor...	7.990	8.935	131.9E6	55260247	17.389	22.606 #
Target Compounds						
2) A alpha-BHC	3.752	4.306	120.6E6	43477547	10.209	11.234
3) MA gamma-BHC...	4.027	4.585	112.3E6	41394798	10.713m	11.461
6) B beta-BHC	4.283	4.748	51581607	18617528	10.928	12.273
12) B 4,4'-DDE	5.434	6.244	1648814	506625	0.172m	0.189m
14) MA Endrin	5.811	6.599	441.3E6	131.6E6	50.796	55.093
16) A 4,4'-DDD	5.945	6.722	16156283	4916062	2.202m	2.297
17) MA 4,4'-DDT	6.180	7.022	824.6E6	245.9E6	110.997	115.336
18) B Endrin al...	6.251	6.924	1933694	540318	0.304m	0.277m
20) A Methoxychlor	6.728	7.477	953.2E6	310.3E6	247.744	272.553
21) B Endrin ke...	6.947	7.611	9908922	3935642	1.263	1.651m#

(f)=RT Delta > 1/2 Window (#)=Amounts differ by > 25% (m)=manual int.

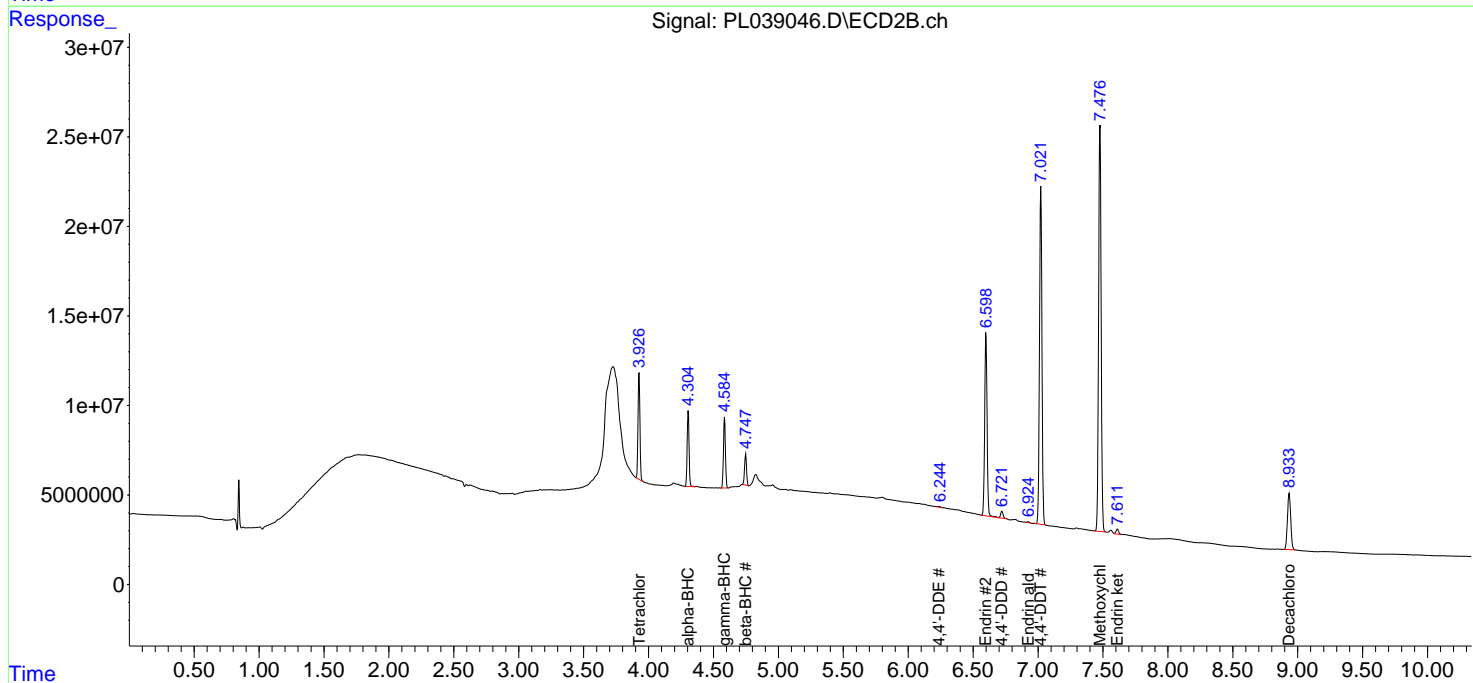
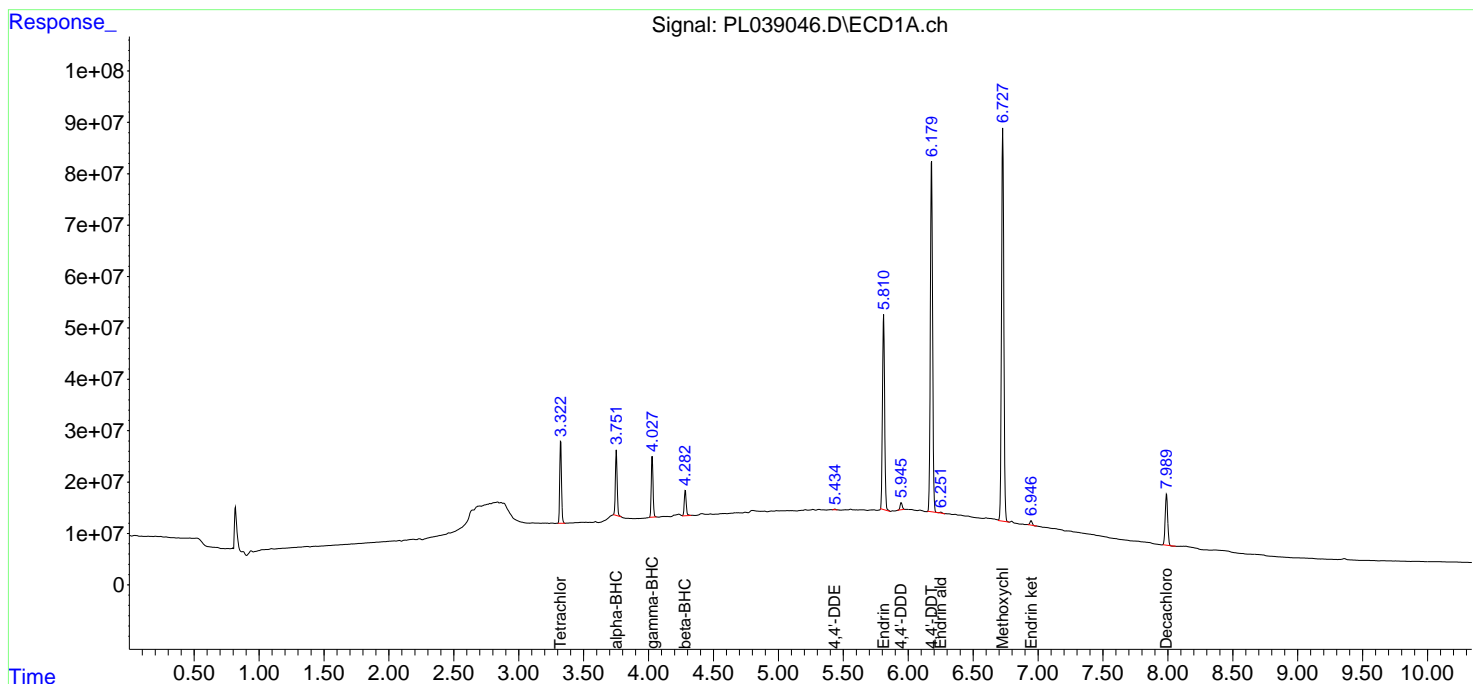
Data Path : Z:\pestpcbsrv\HPCHEM1\ECD_L\Data\PL080818\
 Data File : PL039046.D
 Signal(s) : Signal #1: ECD1A.ch Signal #2: ECD2B.ch
 Acq On : 08 Aug 2018 20:26
 Operator : AJ\SJ
 Sample : PEM
 Misc :
 ALS Vial : 3 Sample Multiplier: 1

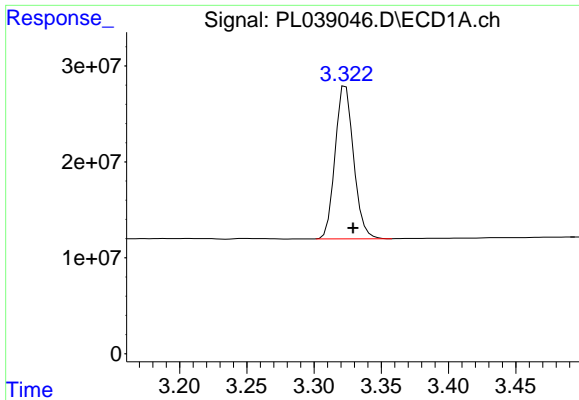
Instrument :
 ECD_L
 ClientSampled :
 PEM

Manual Integrations
APPROVED
 Sohil
 8/9/2018 9:58:46 AM

Integration File signal 1: autoint1.e
 Integration File signal 2: autoint2.e
 Quant Time: Aug 09 01:10:44 2018
 Quant Method : Z:\PESTPCBSRV\HPCHEM1\ECD_L\methods\PL071318.M
 Quant Title : GC Extractables
 QLast Update : Sat Jul 14 00:12:12 2018
 Response via : Initial Calibration
 Integrator: ChemStation

Volume Inj. : 2 µl
 Signal #1 Phase : ZB-MR1 Signal #2 Phase: ZB-MR2
 Signal #1 Info : 30M x 0.32mm x0.5 Signal #2 Info : 30M x 0.32mm x0.25µm

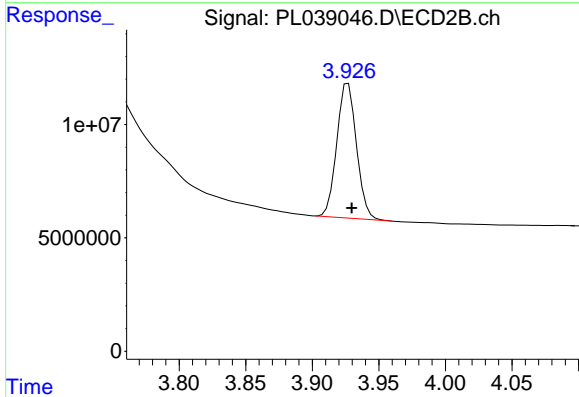




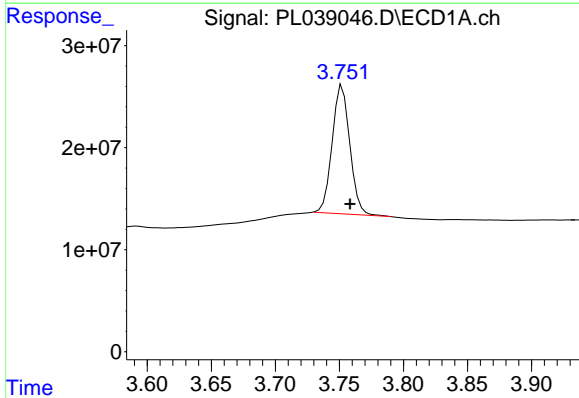
#1 Tetrachloro-m-xylene
R.T.: 3.324 min
Delta R.T.: -0.005 min
Response: 151722150
Conc: 20.38 ng/ml

Instrument :
ECD_L
ClientSampled :
PEM

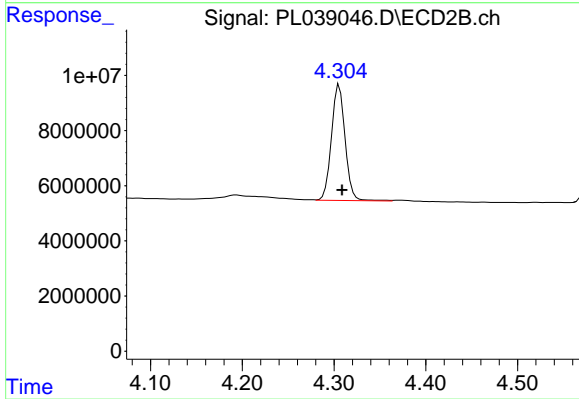
Manual Integrations
APPROVED
Sohil
8/9/2018 9:58:46 AM



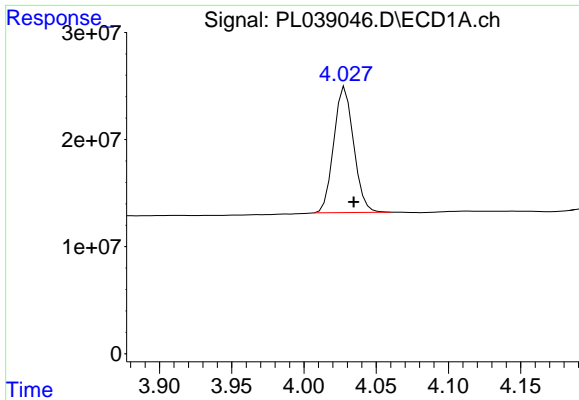
#1 Tetrachloro-m-xylene
R.T.: 3.927 min
Delta R.T.: -0.003 min
Response: 60982765
Conc: 23.23 ng/ml



#2 alpha-BHC
R.T.: 3.752 min
Delta R.T.: -0.006 min
Response: 120623013
Conc: 10.21 ng/ml



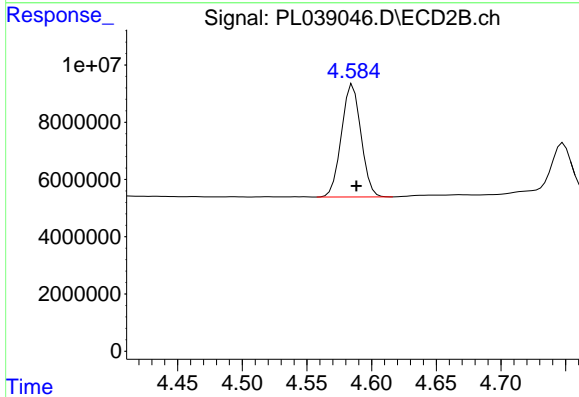
#2 alpha-BHC
R.T.: 4.306 min
Delta R.T.: -0.003 min
Response: 43477547
Conc: 11.23 ng/ml



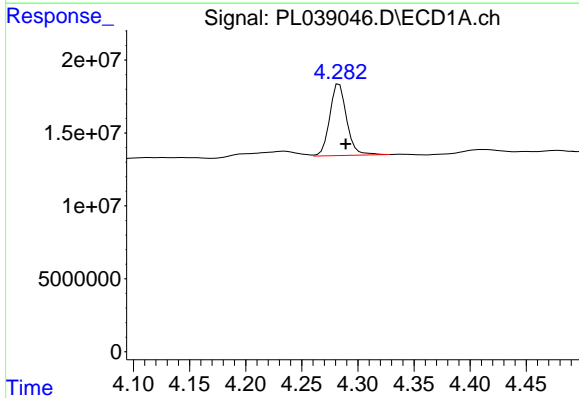
#3 gamma-BHC (Lindane)
 R.T.: 4.027 min
 Delta R.T.: -0.007 min
 Response: 112311979
 Conc: 10.71 ng/ml m

Instrument :
 ECD_L
 ClientSampled :
 PEM

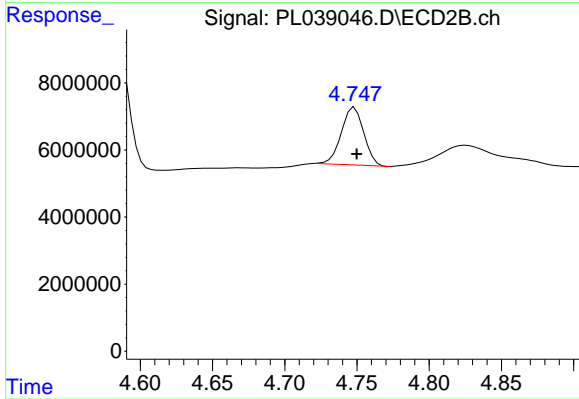
Manual Integrations
 APPROVED
 Sohil
 8/9/2018 9:58:46 AM



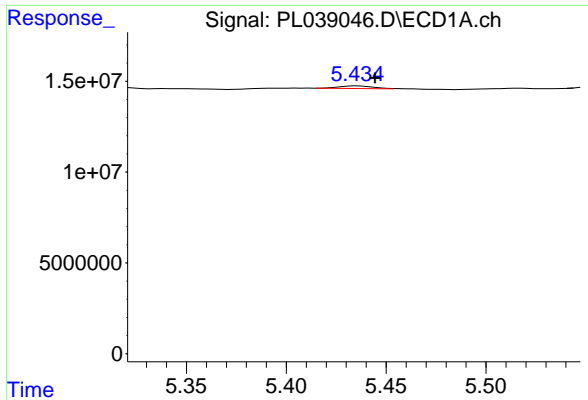
#3 gamma-BHC (Lindane)
 R.T.: 4.585 min
 Delta R.T.: -0.003 min
 Response: 41394798
 Conc: 11.46 ng/ml



#6 beta-BHC
 R.T.: 4.283 min
 Delta R.T.: -0.006 min
 Response: 51581607
 Conc: 10.93 ng/ml



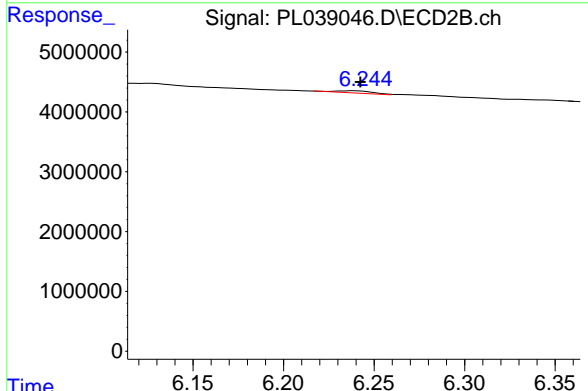
#6 beta-BHC
 R.T.: 4.748 min
 Delta R.T.: -0.002 min
 Response: 18617528
 Conc: 12.27 ng/ml



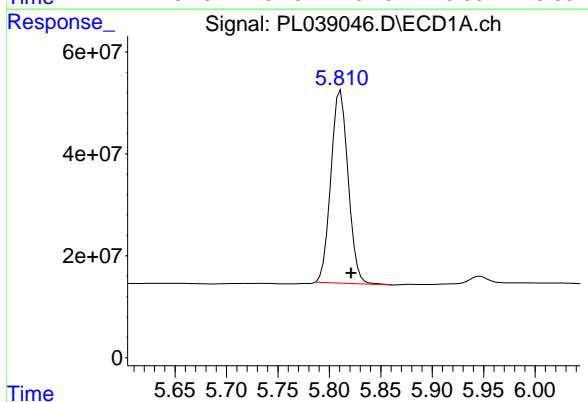
#12 4,4'-DDE
 R.T.: 5.434 min
 Delta R.T.: -0.010 min
 Response: 1648814
 Conc: 0.17 ng/ml m

Instrument :
 ECD_L
 ClientSampled :
 PEM

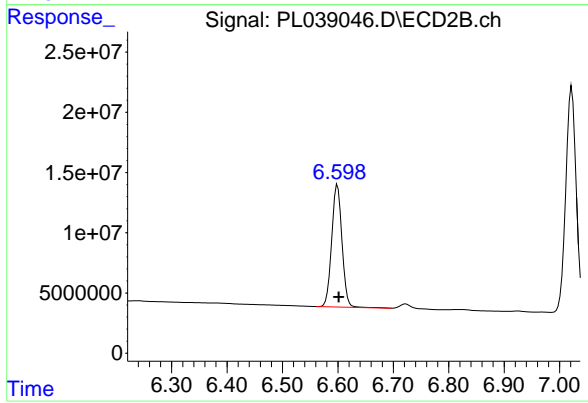
Manual Integrations
 APPROVED
 Sohil
 8/9/2018 9:58:46 AM



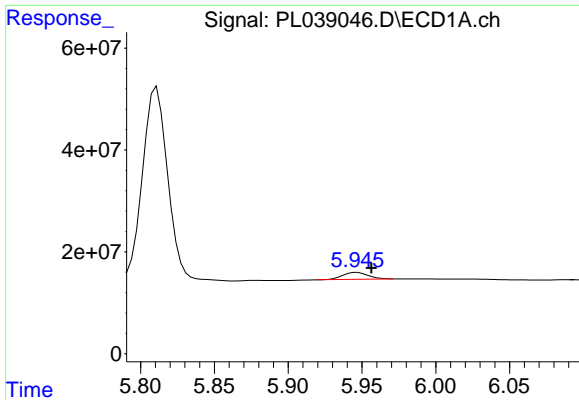
#12 4,4'-DDE
 R.T.: 6.244 min
 Delta R.T.: 0.001 min
 Response: 506625
 Conc: 0.19 ng/ml m



#14 Endrin
 R.T.: 5.811 min
 Delta R.T.: -0.010 min
 Response: 441337782
 Conc: 50.80 ng/ml



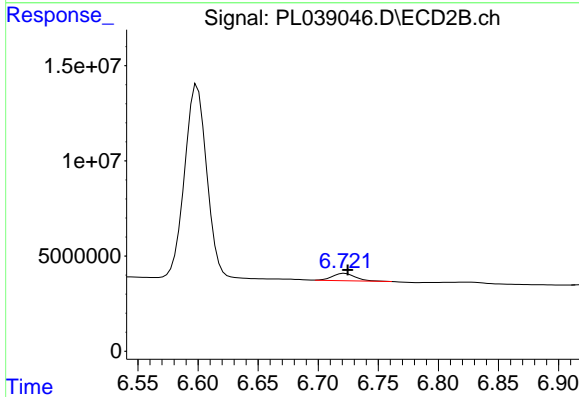
#14 Endrin
 R.T.: 6.599 min
 Delta R.T.: -0.003 min
 Response: 131568963
 Conc: 55.09 ng/ml



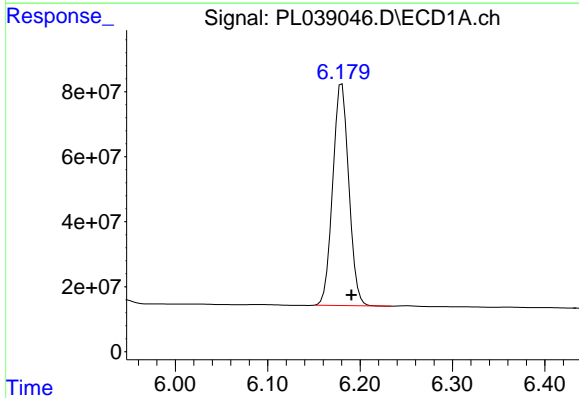
#16 4,4'-DDD
 R.T.: 5.945 min
 Delta R.T.: -0.011 min
 Response: 16156283
 Conc: 2.20 ng/ml m

Instrument :
 ECD_L
 ClientSampled :
 PEM

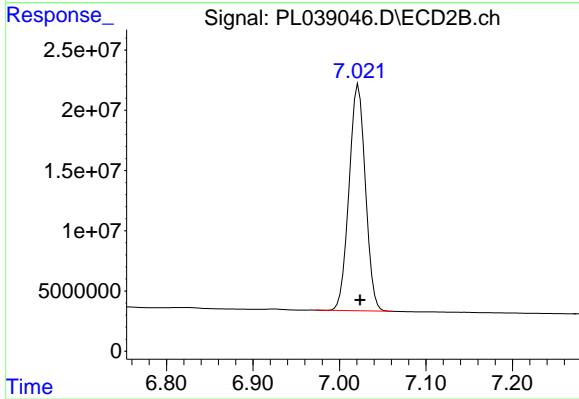
Manual Integrations
 APPROVED
 Sohil
 8/9/2018 9:58:46 AM



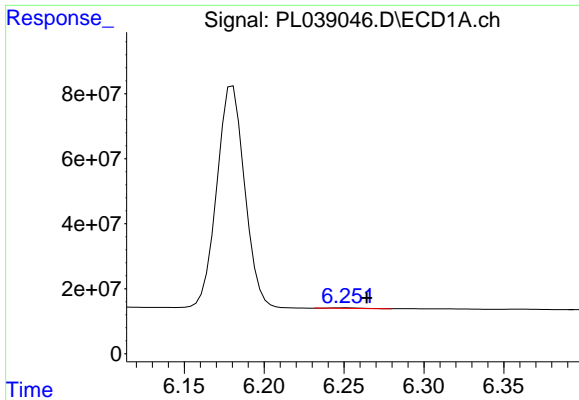
#16 4,4'-DDD
 R.T.: 6.722 min
 Delta R.T.: -0.002 min
 Response: 4916062
 Conc: 2.30 ng/ml



#17 4,4'-DDT
 R.T.: 6.180 min
 Delta R.T.: -0.010 min
 Response: 824559565
 Conc: 111.00 ng/ml



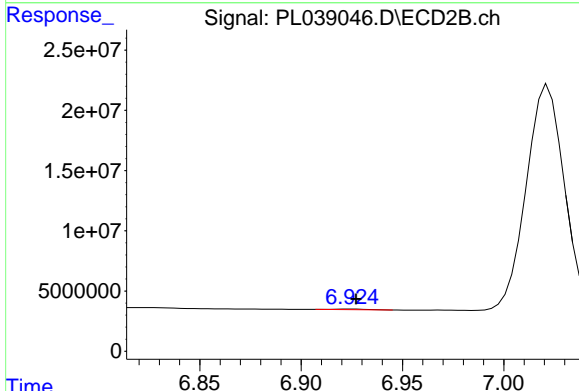
#17 4,4'-DDT
 R.T.: 7.022 min
 Delta R.T.: -0.002 min
 Response: 245900632
 Conc: 115.34 ng/ml



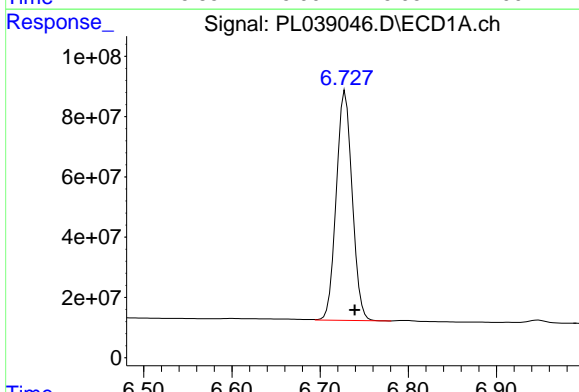
#18 Endrin aldehyde
 R.T.: 6.251 min
 Delta R.T.: -0.013 min
 Response: 1933694
 Conc: 0.30 ng/ml m

Instrument :
 ECD_L
 ClientSampled :
 PEM

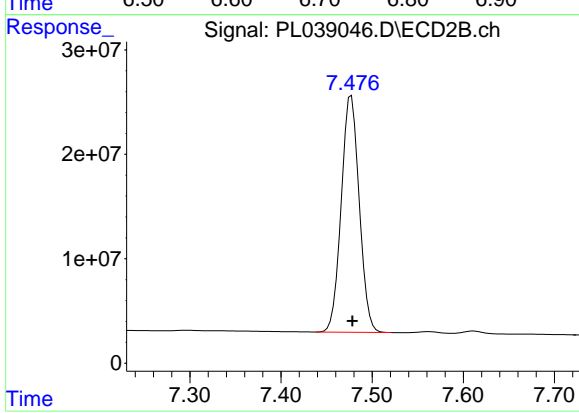
Manual Integrations
 APPROVED
 Sohil
 8/9/2018 9:58:46 AM



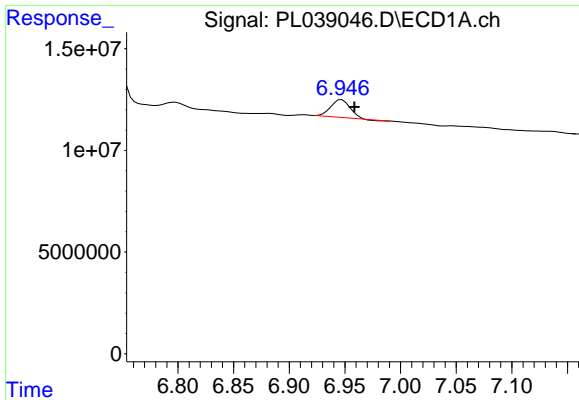
#18 Endrin aldehyde
 R.T.: 6.924 min
 Delta R.T.: -0.003 min
 Response: 540318
 Conc: 0.28 ng/ml m



#20 Methoxychlor
 R.T.: 6.728 min
 Delta R.T.: -0.011 min
 Response: 953190373
 Conc: 247.74 ng/ml



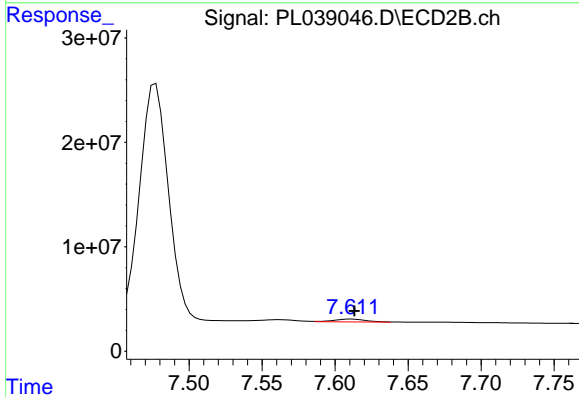
#20 Methoxychlor
 R.T.: 7.477 min
 Delta R.T.: -0.001 min
 Response: 310346404
 Conc: 272.55 ng/ml



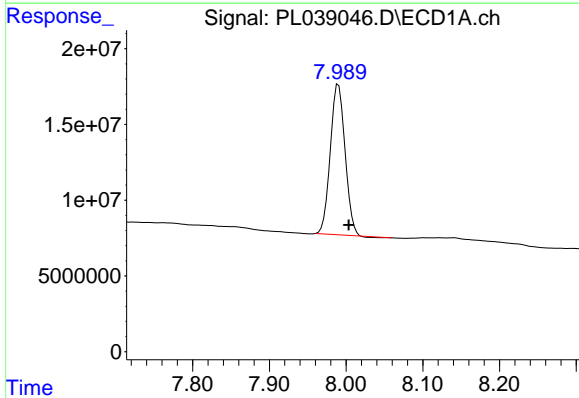
#21 Endrin ketone
 R.T.: 6.947 min
 Delta R.T.: -0.011 min
 Response: 9908922
 Conc: 1.26 ng/ml

Instrument :
 ECD_L
 ClientSampled :
 PEM

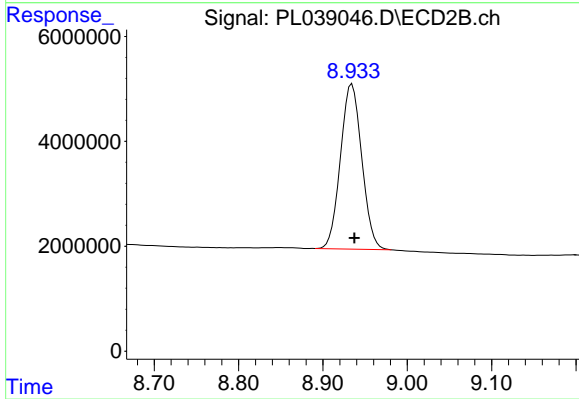
Manual Integrations
APPROVED
 Sohil
 8/9/2018 9:58:46 AM



#21 Endrin ketone
 R.T.: 7.611 min
 Delta R.T.: -0.003 min
 Response: 3935642
 Conc: 1.65 ng/ml m



#28 Decachlorobiphenyl
 R.T.: 7.990 min
 Delta R.T.: -0.014 min
 Response: 131910770
 Conc: 17.39 ng/ml



#28 Decachlorobiphenyl
 R.T.: 8.935 min
 Delta R.T.: -0.003 min
 Response: 55260247
 Conc: 22.61 ng/ml