

Data Path : Z:\pestpcbsrv\HPCHEM1\ECD_L\Data\PL080818\
 Data File : PL039055.D
 Signal(s) : Signal #1: ECD1A.ch Signal #2: ECD2B.ch
 Acq On : 08 Aug 2018 22:33
 Operator : AJ\SJ
 Sample : I.BLK
 Misc :
 ALS Vial : 2 Sample Multiplier: 1

Instrument :
 ECD_L
 ClientSampleId :
 I.BLK

Integration File signal 1: autoint1.e
 Integration File signal 2: autoint2.e
 Quant Time: Aug 09 01:14:29 2018
 Quant Method : Z:\PESTPCBSRV\HPCHEM1\ECD_L\methods\PL071318.M
 Quant Title : GC Extractables
 QLast Update : Sat Jul 14 00:12:12 2018
 Response via : Initial Calibration
 Integrator: ChemStation

Volume Inj. : 2 µl
 Signal #1 Phase : ZB-MR1 Signal #2 Phase: ZB-MR2
 Signal #1 Info : 30M x 0.32mm x0.5 Signal #2 Info : 30M x 0.32mm x0.25µm

Compound	RT#1	RT#2	Resp#1	Resp#2	ng/ml	ng/ml

System Monitoring Compounds						
1) SA Tetrachlo...	3.323	3.927	157.7E6	63233005	21.184	24.089
28) SA Decachlor...	7.991	8.936	143.1E6	56423443	18.866	23.082

Target Compounds

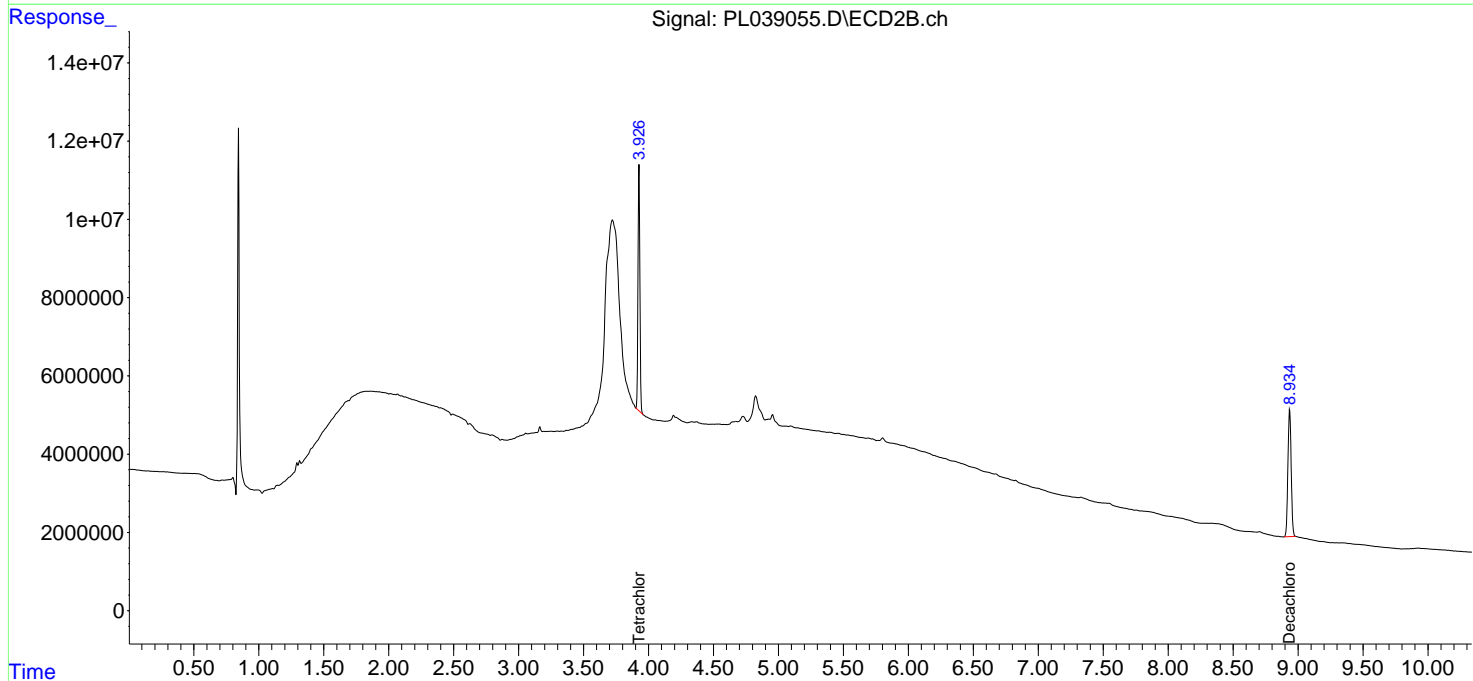
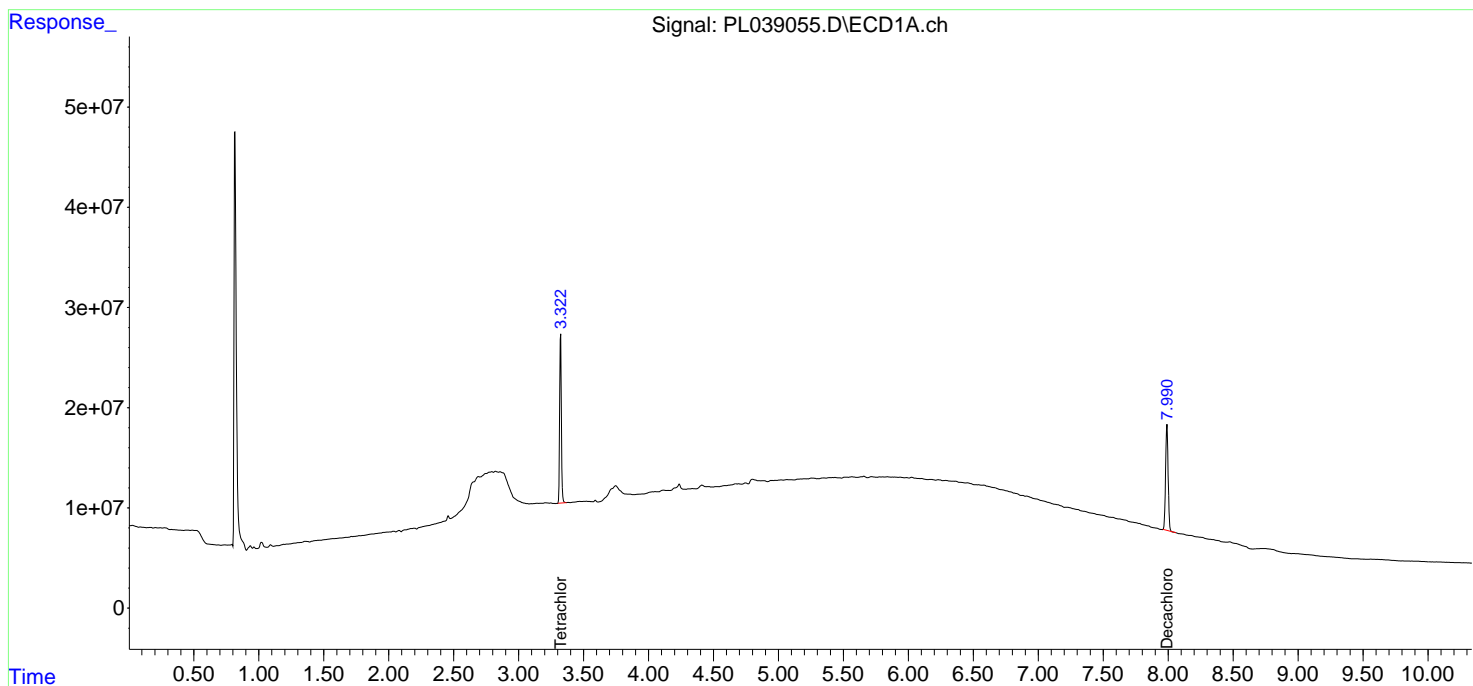
(f)=RT Delta > 1/2 Window (#)=Amounts differ by > 25% (m)=manual int.

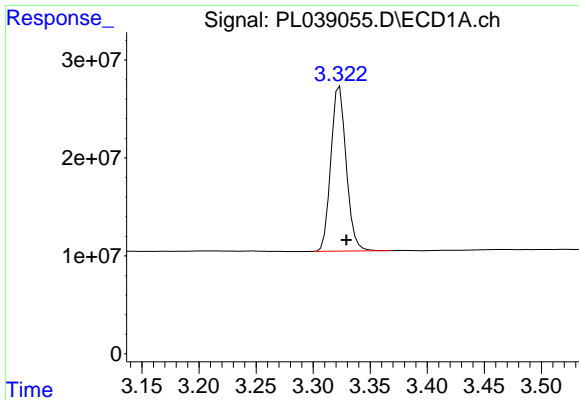
Data Path : Z:\pestpcbsrv\HPCHEM1\ECD_L\Data\PL080818\
 Data File : PL039055.D
 Signal(s) : Signal #1: ECD1A.ch Signal #2: ECD2B.ch
 Acq On : 08 Aug 2018 22:33
 Operator : AJ\SJ
 Sample : I.BLK
 Misc :
 ALS Vial : 2 Sample Multiplier: 1

Instrument :
 ECD_L
 ClientSampled :
 I.BLK

Integration File signal 1: autoint1.e
 Integration File signal 2: autoint2.e
 Quant Time: Aug 09 01:14:29 2018
 Quant Method : Z:\PESTPCBSRV\HPCHEM1\ECD_L\methods\PL071318.M
 Quant Title : GC Extractables
 QLast Update : Sat Jul 14 00:12:12 2018
 Response via : Initial Calibration
 Integrator: ChemStation

Volume Inj. : 2 µl
 Signal #1 Phase : ZB-MR1 Signal #2 Phase: ZB-MR2
 Signal #1 Info : 30M x 0.32mm x0.5 Signal #2 Info : 30M x 0.32mm x0.25µm

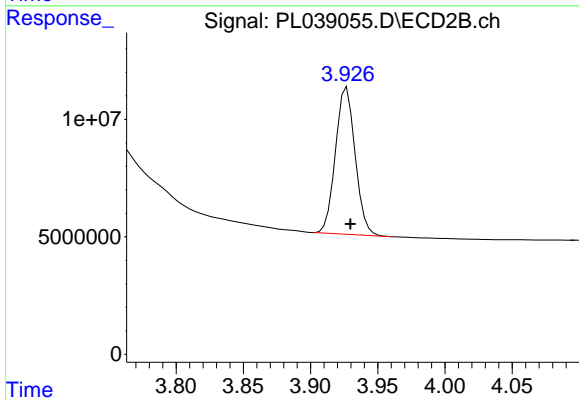




#1 Tetrachloro-m-xylene

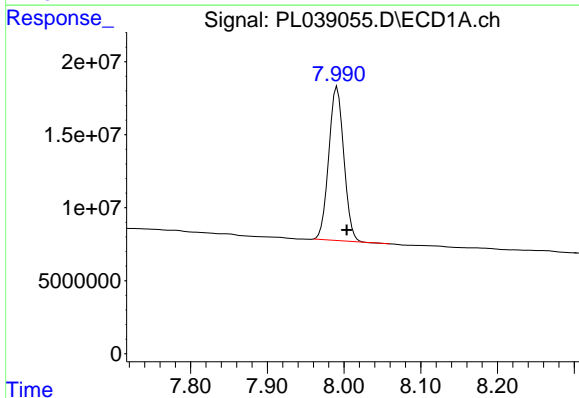
R.T.: 3.323 min
 Delta R.T.: -0.006 min
 Response: 157744281
 Conc: 21.18 ng/ml

Instrument :
 ECD_L
 ClientSampled :
 I.BLK



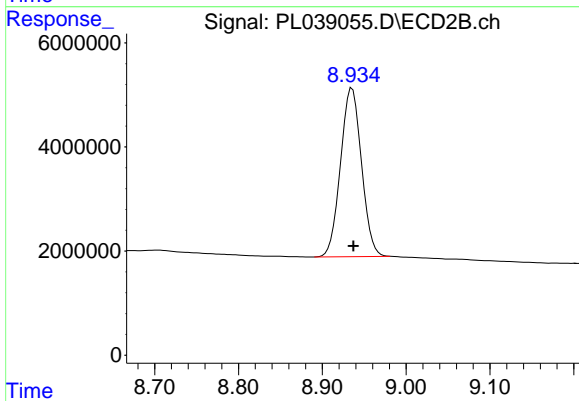
#1 Tetrachloro-m-xylene

R.T.: 3.927 min
 Delta R.T.: -0.003 min
 Response: 63233005
 Conc: 24.09 ng/ml



#28 Decachlorobiphenyl

R.T.: 7.991 min
 Delta R.T.: -0.013 min
 Response: 143112461
 Conc: 18.87 ng/ml



#28 Decachlorobiphenyl

R.T.: 8.936 min
 Delta R.T.: -0.002 min
 Response: 56423443
 Conc: 23.08 ng/ml