

Data Path : Z:\pestpcbsrv\HPCHEM1\ECD_L\Data\PL080819\
 Data File : PL051208.D
 Signal(s) : Signal #1: ECD1A.ch Signal #2: ECD2B.ch
 Acq On : 09 Aug 2019 04:50
 Operator : SM\AJ
 Sample : K4223-01
 Misc :
 ALS Vial : 13 Sample Multiplier: 1

Instrument :
 ECD_L
 ClientSampleId :

Integration File signal 1: autoint1.e
 Integration File signal 2: autoint2.e
 Quant Time: Aug 09 06:42:32 2019
 Quant Method : Z:\pestpcbsrv\HPCHEM1\ECD_L\methods\PL071719.M
 Quant Title : GC Extractables
 QLast Update : Fri Jul 19 01:19:13 2019
 Response via : Initial Calibration
 Integrator: ChemStation

Volume Inj. : 1 µl
 Signal #1 Phase : ZB-MR2 Signal #2 Phase: ZB-MR1
 Signal #1 Info : 30M x 0.32mm x0.2 Signal #2 Info : 30M x 0.32mm x0.5µm

Compound	RT#1	RT#2	Resp#1	Resp#2	ng/ml	ng/ml

System Monitoring Compounds						
1) SA Tetrachlo...	3.318	3.928	95563196	24996138	9.511	8.761
28) SA Decachlor...	7.979	8.959	66324285	18846799	6.550	6.665
Target Compounds						
2) A alpha-BHC	0.000	4.340f	0	4782166	N.D.	1.159 #
4) MA Heptachlor	4.302	5.124f	29514569	4344801	1.799	1.048 #
5) MB Aldrin	4.542	5.377f	35031659	5663728	2.261	1.503 #
6) B beta-BHC	4.302f	4.799f	29514569	2210115	4.502	1.278 #
8) B Heptachlo...	0.000	5.804	0	22751355	N.D.	5.948 #
10) B gamma-Chl...	5.221f	6.023	106.2E6	6446273	6.730	1.744 #
11) B alpha-Chl...	5.256	6.097	44329722	17161500	2.906	4.682 #
12) B 4,4'-DDE	5.425	6.254	7581912	6096566	0.506	1.692 #
17) MA 4,4'-DDT	6.167	0.000	8108776	0	0.655	N.D. #
23) Chlordane-1	4.158	4.912	15900268	4757026	43.213	43.848
24) Chlordane-2	4.648	5.377	29061329	5663728	64.926	48.221 #
25) Chlordane-3	5.221f	6.023	106.2E6	6446273	75.881	13.402 #
26) Chlordane-4	5.256	6.097	44329722	17161500	33.609	29.542

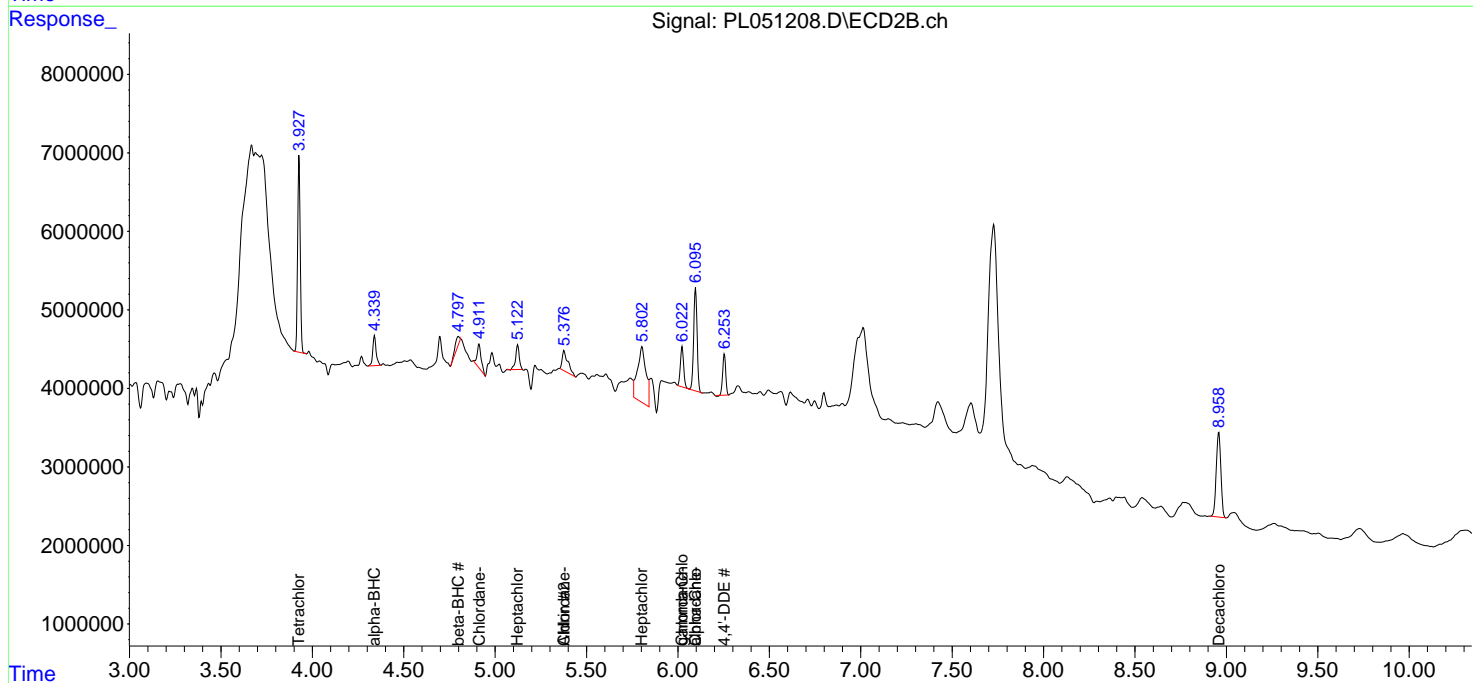
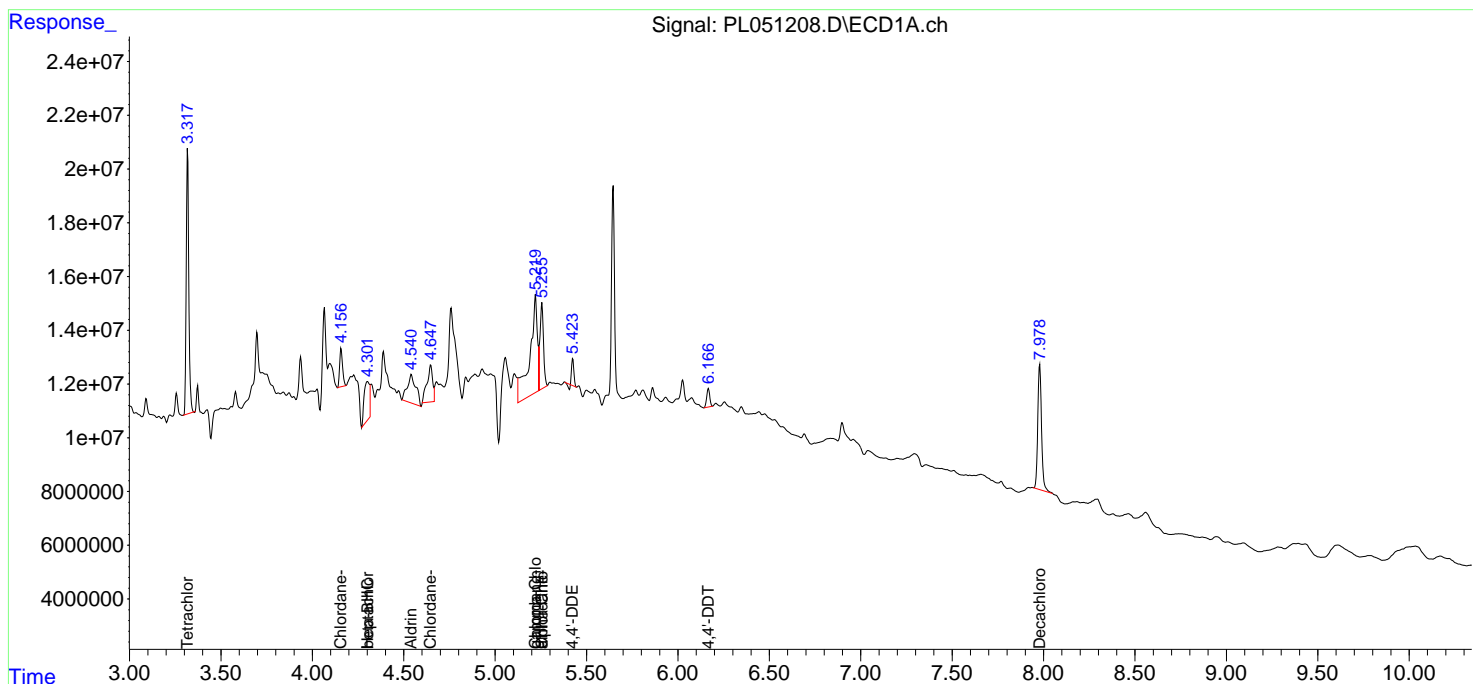
(f)=RT Delta > 1/2 Window (#)=Amounts differ by > 25% (m)=manual int.

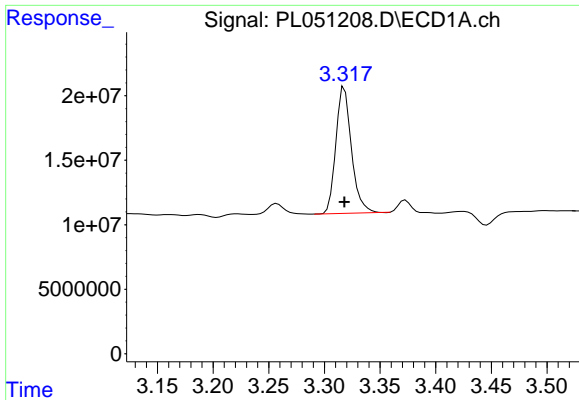
Data Path : Z:\pestpcbsrv\HPCHEM1\ECD_L\Data\PL080819\
 Data File : PL051208.D
 Signal(s) : Signal #1: ECD1A.ch Signal #2: ECD2B.ch
 Acq On : 09 Aug 2019 04:50
 Operator : SM\AJ
 Sample : K4223-01
 Misc :
 ALS Vial : 13 Sample Multiplier: 1

Instrument :
 ECD_L
 ClientSampled :

Integration File signal 1: autoint1.e
 Integration File signal 2: autoint2.e
 Quant Time: Aug 09 06:42:32 2019
 Quant Method : Z:\pestpcbsrv\HPCHEM1\ECD_L\methods\PL071719.M
 Quant Title : GC Extractables
 QLast Update : Fri Jul 19 01:19:13 2019
 Response via : Initial Calibration
 Integrator: ChemStation

Volume Inj. : 1 µl
 Signal #1 Phase : ZB-MR2 Signal #2 Phase: ZB-MR1
 Signal #1 Info : 30M x 0.32mm x0.2 Signal #2 Info : 30M x 0.32mm x0.5µm

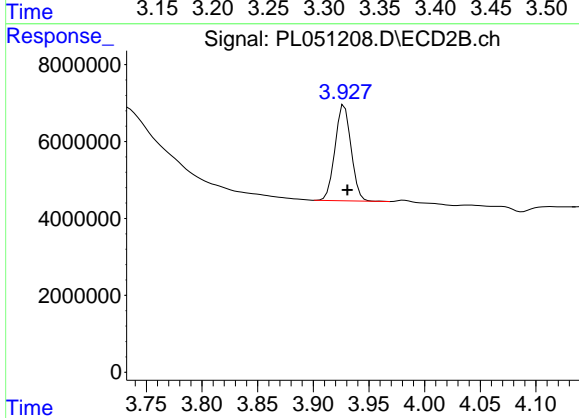




#1 Tetrachloro-m-xylene

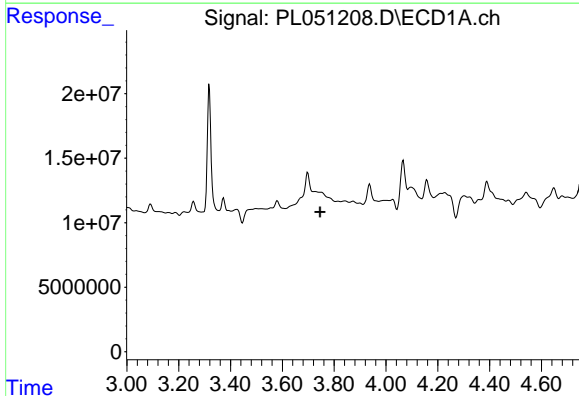
R.T.: 3.318 min
 Delta R.T.: 0.000 min
 Response: 95563196
 Conc: 9.51 ng/ml

Instrument :
 ECD_L
 ClientSampled :



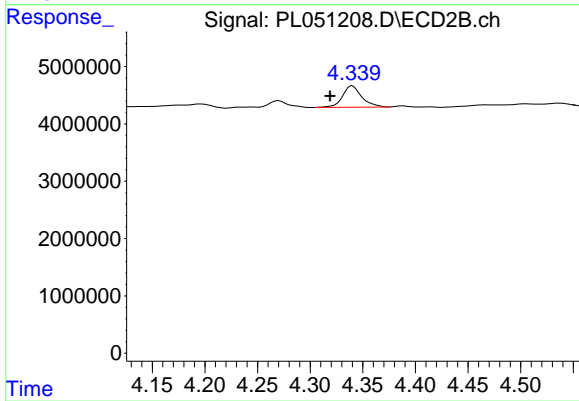
#1 Tetrachloro-m-xylene

R.T.: 3.928 min
 Delta R.T.: -0.003 min
 Response: 24996138
 Conc: 8.76 ng/ml



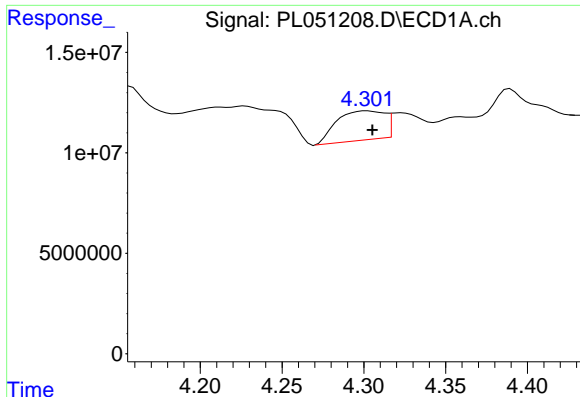
#2 alpha-BHC

R.T.: 0.000 min
 Exp R.T. : 3.746 min
 Response: 0
 Conc: N.D.



#2 alpha-BHC

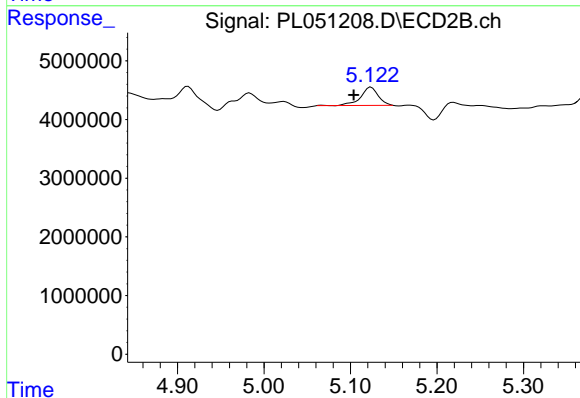
R.T.: 4.340 min
 Delta R.T.: 0.022 min
 Response: 4782166
 Conc: 1.16 ng/ml



#4 Heptachlor

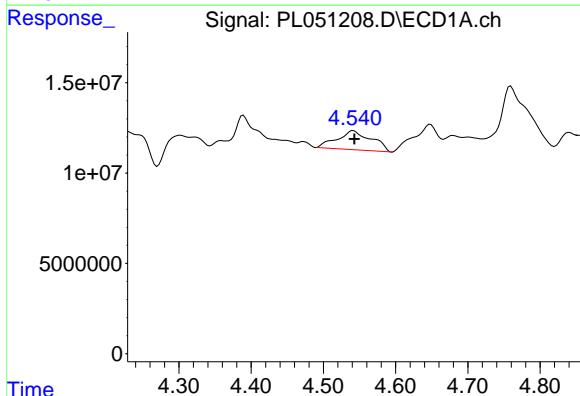
R.T.: 4.302 min
Delta R.T.: -0.003 min
Response: 29514569
Conc: 1.80 ng/ml

Instrument :
ECD_L
ClientSampled :



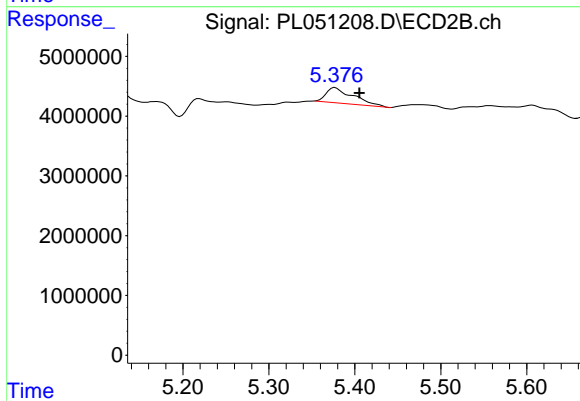
#4 Heptachlor

R.T.: 5.124 min
Delta R.T.: 0.020 min
Response: 4344801
Conc: 1.05 ng/ml



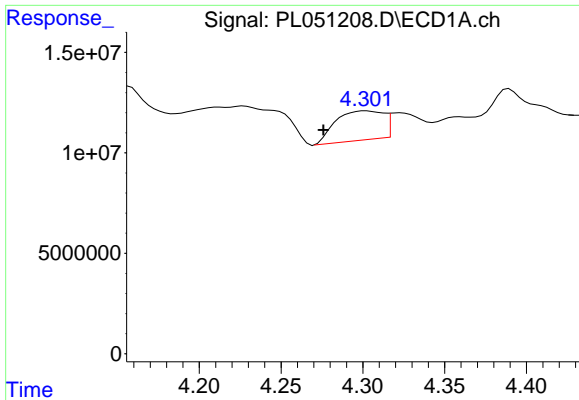
#5 Aldrin

R.T.: 4.542 min
Delta R.T.: -0.002 min
Response: 35031659
Conc: 2.26 ng/ml



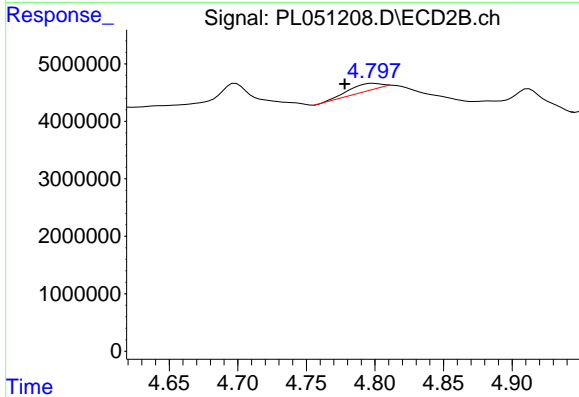
#5 Aldrin

R.T.: 5.377 min
Delta R.T.: -0.028 min
Response: 5663728
Conc: 1.50 ng/ml

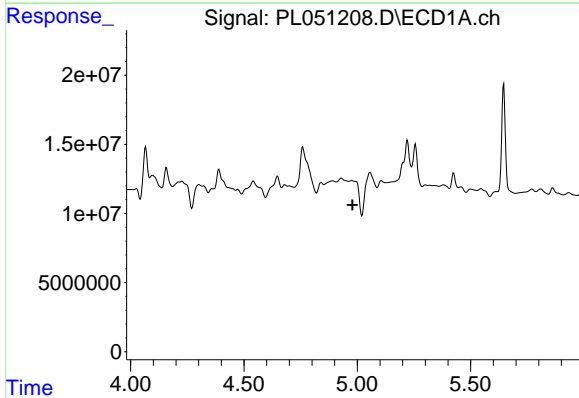


#6 beta-BHC
 R.T.: 4.302 min
 Delta R.T.: 0.026 min
 Response: 29514569
 Conc: 4.50 ng/ml

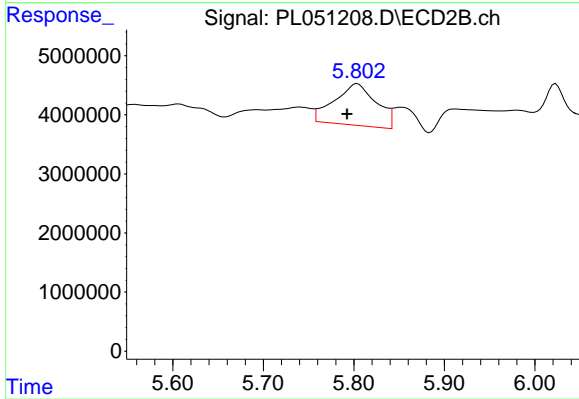
Instrument :
 ECD_L
 ClientSampleId :



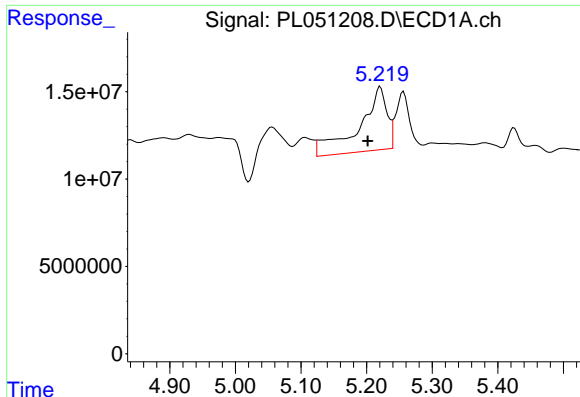
#6 beta-BHC
 R.T.: 4.799 min
 Delta R.T.: 0.021 min
 Response: 2210115
 Conc: 1.28 ng/ml



#8 Heptachlor epoxide
 R.T.: 0.000 min
 Exp R.T. : 4.979 min
 Response: 0
 Conc: N.D.



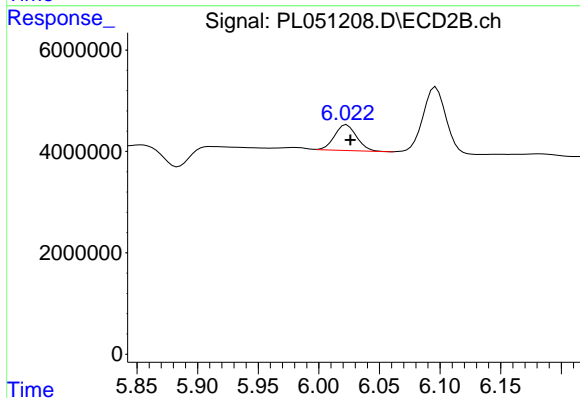
#8 Heptachlor epoxide
 R.T.: 5.804 min
 Delta R.T.: 0.011 min
 Response: 22751355
 Conc: 5.95 ng/ml



#10 gamma-Chlordane

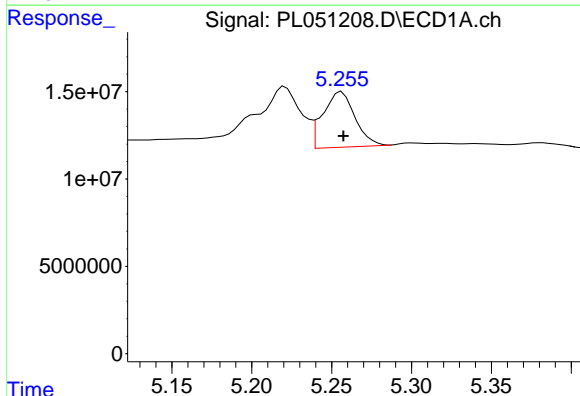
R.T.: 5.221 min
 Delta R.T.: 0.019 min
 Response: 106217754
 Conc: 6.73 ng/ml

Instrument :
 ECD_L
 ClientSampled :



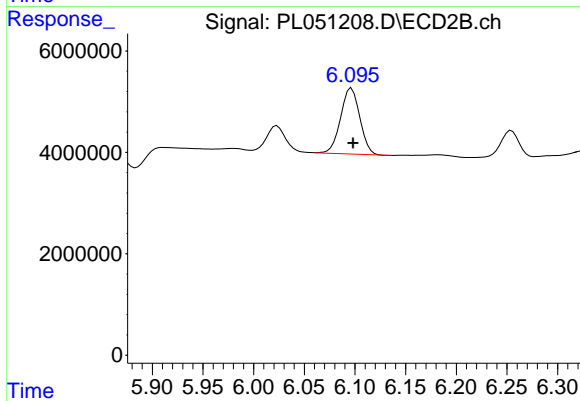
#10 gamma-Chlordane

R.T.: 6.023 min
 Delta R.T.: -0.003 min
 Response: 6446273
 Conc: 1.74 ng/ml



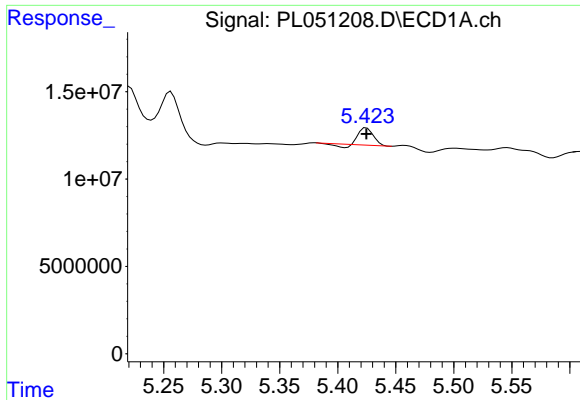
#11 alpha-Chlordane

R.T.: 5.256 min
 Delta R.T.: -0.001 min
 Response: 44329722
 Conc: 2.91 ng/ml



#11 alpha-Chlordane

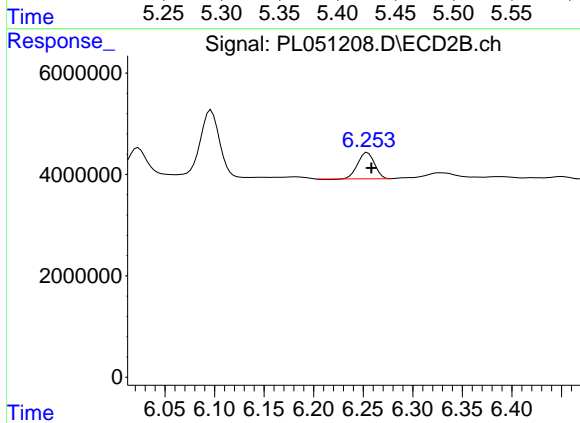
R.T.: 6.097 min
 Delta R.T.: -0.001 min
 Response: 17161500
 Conc: 4.68 ng/ml



#12 4,4'-DDE

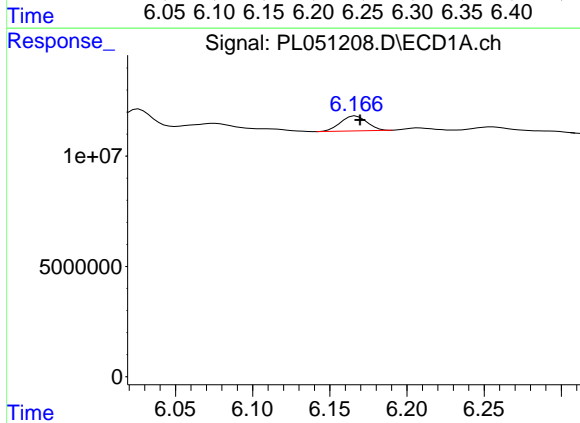
R.T.: 5.425 min
 Delta R.T.: 0.000 min
 Response: 7581912
 Conc: 0.51 ng/ml

Instrument :
 ECD_L
 ClientSampleId :



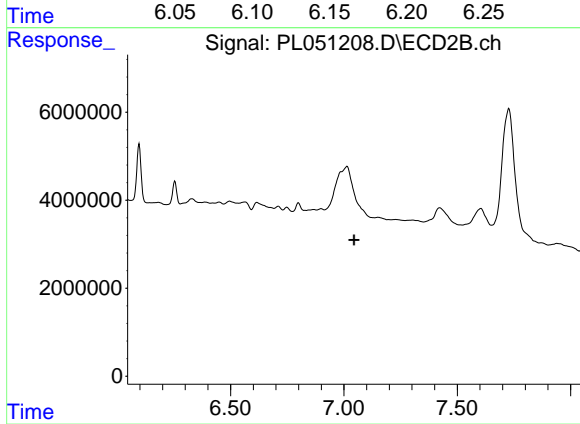
#12 4,4'-DDE

R.T.: 6.254 min
 Delta R.T.: -0.004 min
 Response: 6096566
 Conc: 1.69 ng/ml



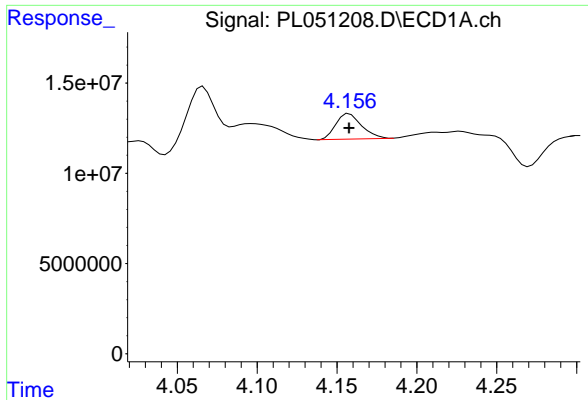
#17 4,4'-DDT

R.T.: 6.167 min
 Delta R.T.: -0.003 min
 Response: 8108776
 Conc: 0.65 ng/ml



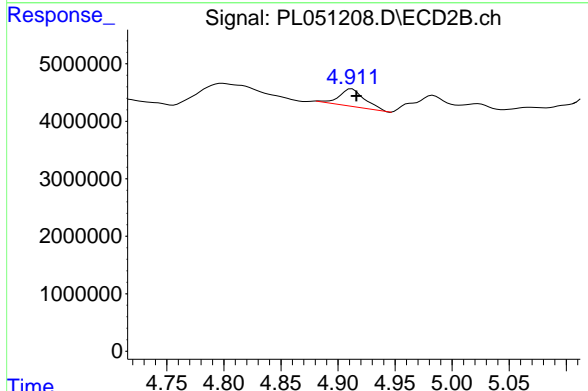
#17 4,4'-DDT

R.T.: 0.000 min
 Exp R.T. : 7.046 min
 Response: 0
 Conc: N.D.

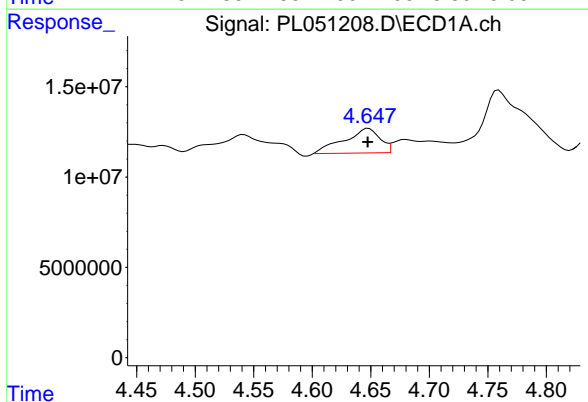


#23 Chlordane-1
 R.T.: 4.158 min
 Delta R.T.: 0.000 min
 Response: 15900268
 Conc: 43.21 ng/ml

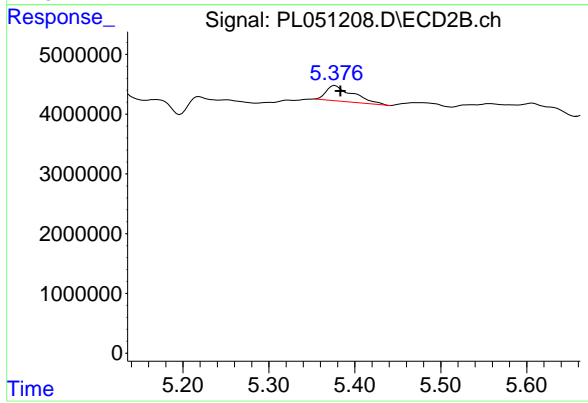
Instrument :
 ECD_L
 ClientSampled :



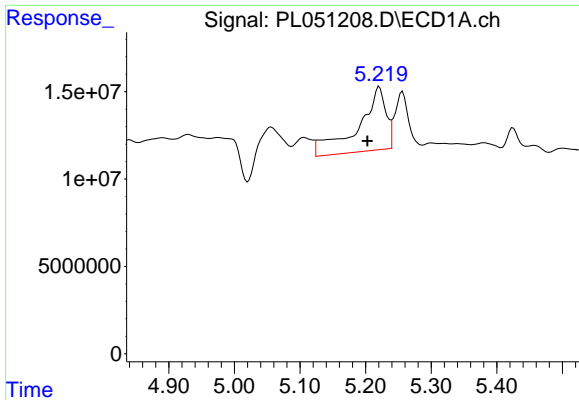
#23 Chlordane-1
 R.T.: 4.912 min
 Delta R.T.: -0.004 min
 Response: 4757026
 Conc: 43.85 ng/ml



#24 Chlordane-2
 R.T.: 4.648 min
 Delta R.T.: 0.000 min
 Response: 29061329
 Conc: 64.93 ng/ml

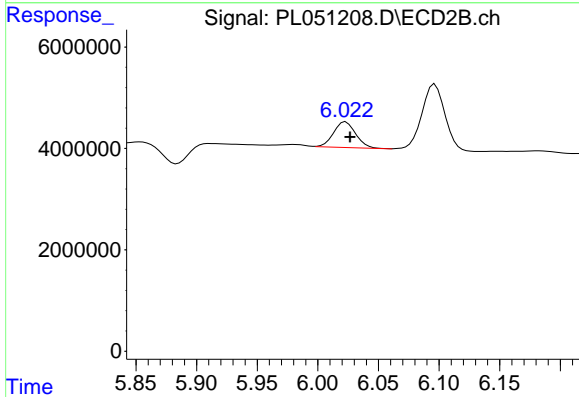


#24 Chlordane-2
 R.T.: 5.377 min
 Delta R.T.: -0.006 min
 Response: 5663728
 Conc: 48.22 ng/ml

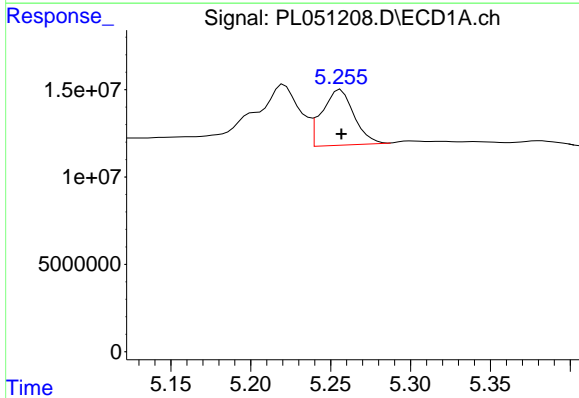


#25 Chlordane-3
 R.T.: 5.221 min
 Delta R.T.: 0.018 min
 Response: 106217754
 Conc: 75.88 ng/ml

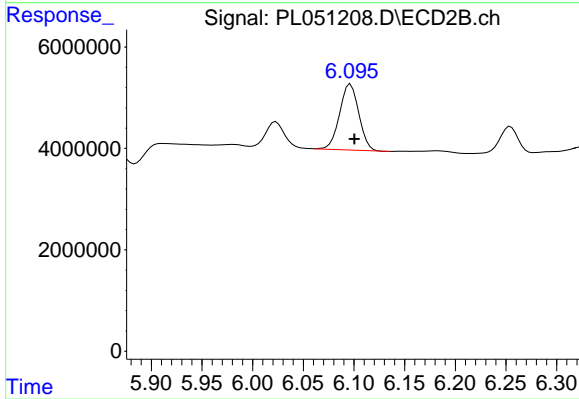
Instrument :
 ECD_L
 ClientSampled :



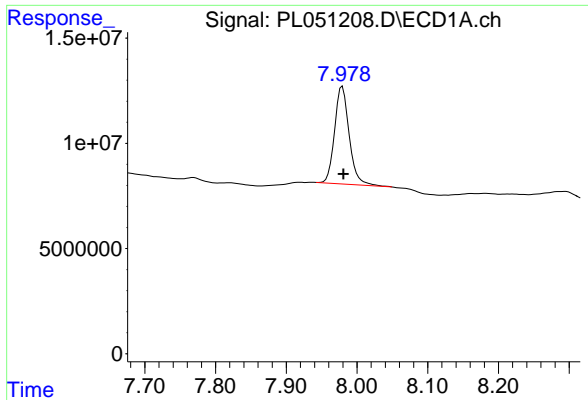
#25 Chlordane-3
 R.T.: 6.023 min
 Delta R.T.: -0.003 min
 Response: 6446273
 Conc: 13.40 ng/ml



#26 Chlordane-4
 R.T.: 5.256 min
 Delta R.T.: 0.000 min
 Response: 44329722
 Conc: 33.61 ng/ml



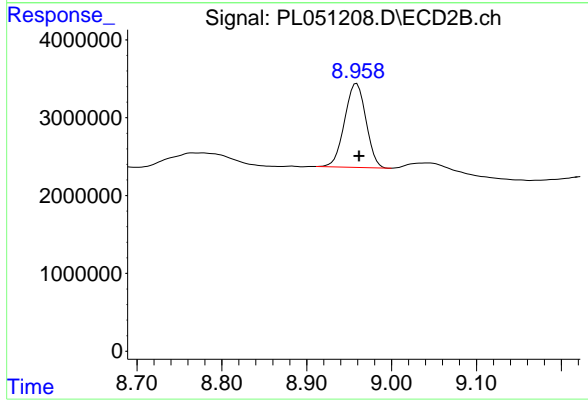
#26 Chlordane-4
 R.T.: 6.097 min
 Delta R.T.: -0.004 min
 Response: 17161500
 Conc: 29.54 ng/ml



#28 Decachlorobiphenyl

R.T.: 7.979 min
Delta R.T.: -0.001 min
Response: 66324285
Conc: 6.55 ng/ml

Instrument :
ECD_L
ClientSampleId :



#28 Decachlorobiphenyl

R.T.: 8.959 min
Delta R.T.: -0.003 min
Response: 18846799
Conc: 6.66 ng/ml