

Data Path : Z:\pestpcbsrv\HPCHEM1\ECD\_L\Data\PL080819\  
 Data File : PL051209.D  
 Signal(s) : Signal #1: ECD1A.ch Signal #2: ECD2B.ch  
 Acq On : 09 Aug 2019 05:05  
 Operator : SM\AJ  
 Sample : K4223-03  
 Misc :  
 ALS Vial : 14 Sample Multiplier: 1

Instrument :  
 ECD\_L  
 ClientSampleId :

Integration File signal 1: autoint1.e  
 Integration File signal 2: autoint2.e  
 Quant Time: Aug 09 06:42:52 2019  
 Quant Method : Z:\pestpcbsrv\HPCHEM1\ECD\_L\methods\PL071719.M  
 Quant Title : GC Extractables  
 QLast Update : Fri Jul 19 01:19:13 2019  
 Response via : Initial Calibration  
 Integrator: ChemStation

Volume Inj. : 1 µl  
 Signal #1 Phase : ZB-MR2 Signal #2 Phase: ZB-MR1  
 Signal #1 Info : 30M x 0.32mm x0.2 Signal #2 Info : 30M x 0.32mm x0.5µm

Compound	RT#1	RT#2	Resp#1	Resp#2	ng/ml	ng/ml
-----						
System Monitoring Compounds						
1) SA Tetrachlo...	3.317	3.928	107.3E6	27705358	10.675	9.710
28) SA Decachlor...	7.979	8.958	70952109	21197291	7.007	7.496
Target Compounds						
2) A alpha-BHC	0.000	4.340f	0	5026976	N.D.	1.218 #
4) MA Heptachlor	4.300	5.123f	30415759	4588770	1.854	1.107 #
5) MB Aldrin	4.541	5.377f	29735731	1788472	1.919	0.475 #
6) B beta-BHC	4.300f	4.802f	30415759	1998782	4.639	1.156 #
8) B Heptachlo...	0.000	5.806	0	29259463	N.D.	7.650 #
10) B gamma-Chl...	5.219f	6.023	114.2E6	7983482	7.233	2.160 #
11) B alpha-Chl...	5.255	6.096	50679568	20042300	3.322	5.468 #
12) B 4,4'-DDE	5.423	6.254	26111950	7221312	1.742	2.004
17) MA 4,4'-DDT	6.165	0.000	6162897	0	0.498	N.D. #
23) Chlordane-1	4.156	4.912	17170190	4825599	46.664	44.480
24) Chlordane-2	4.647	5.377	21544589	1788472	48.133	15.227 #
25) Chlordane-3	5.219f	6.023	114.2E6	7983482	81.552	16.598 #
26) Chlordane-4	5.255	6.096	50679568	20042300	38.423	34.501
-----						

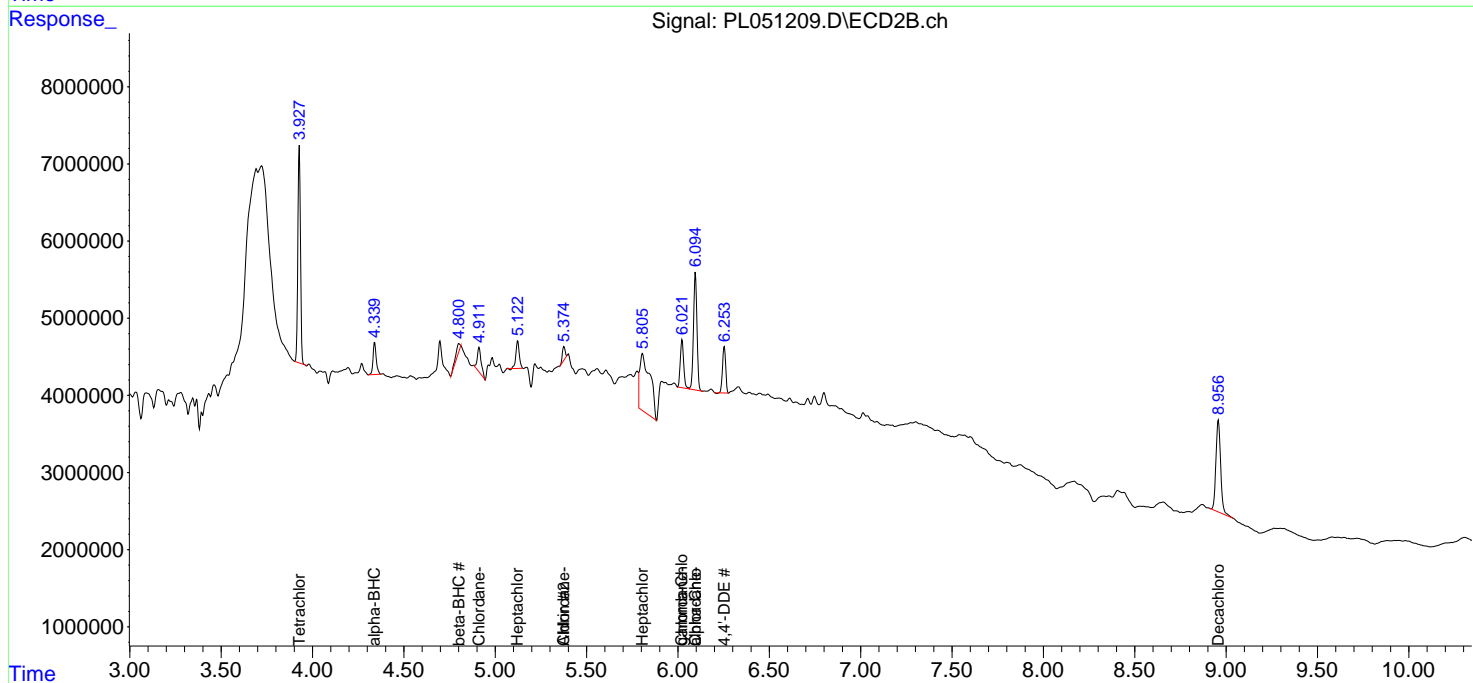
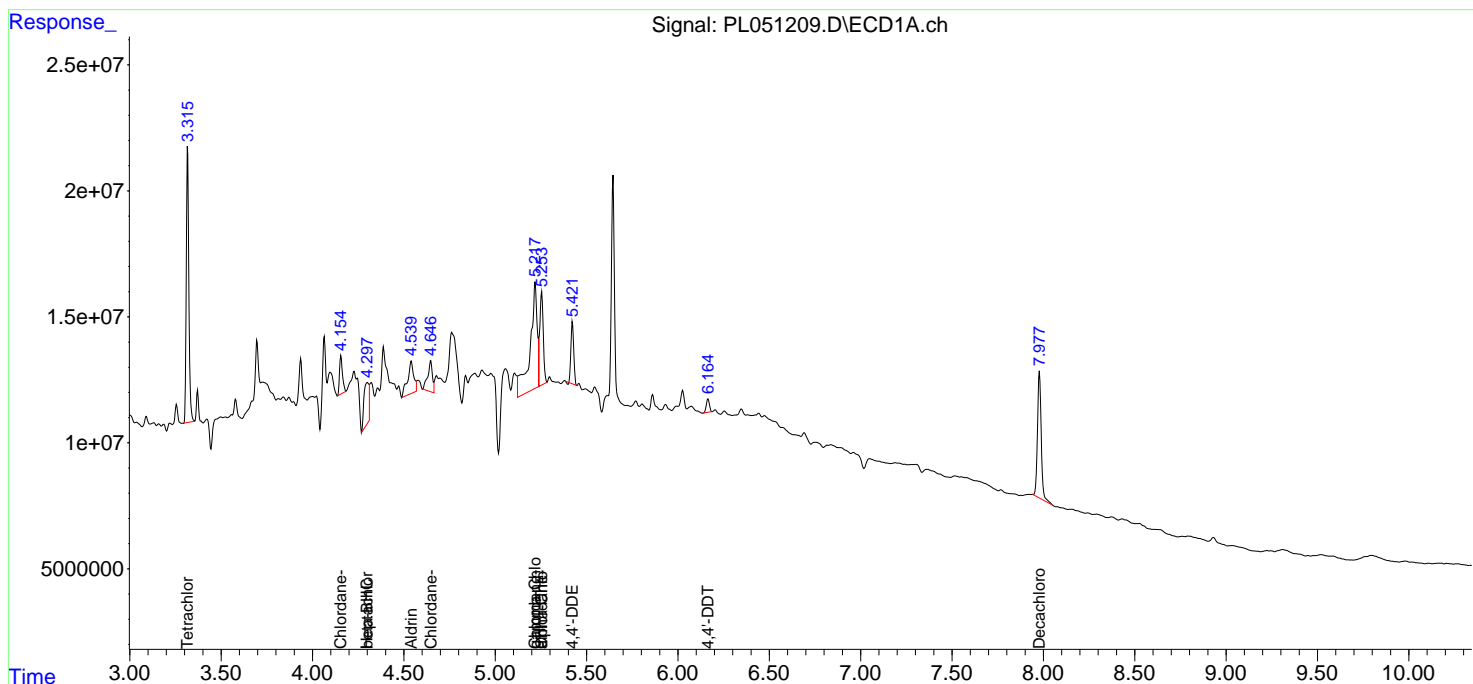
(f)=RT Delta > 1/2 Window (#)=Amounts differ by > 25% (m)=manual int.

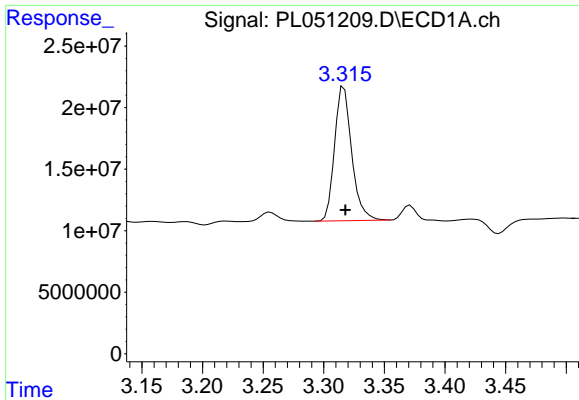
Data Path : Z:\pestpcbsrv\HPCHEM1\ECD\_L\Data\PL080819\  
 Data File : PL051209.D  
 Signal(s) : Signal #1: ECD1A.ch Signal #2: ECD2B.ch  
 Acq On : 09 Aug 2019 05:05  
 Operator : SM\AJ  
 Sample : K4223-03  
 Misc :  
 ALS Vial : 14 Sample Multiplier: 1

Instrument :  
 ECD\_L  
 ClientSampled :

Integration File signal 1: autoint1.e  
 Integration File signal 2: autoint2.e  
 Quant Time: Aug 09 06:42:52 2019  
 Quant Method : Z:\pestpcbsrv\HPCHEM1\ECD\_L\methods\PL071719.M  
 Quant Title : GC Extractables  
 QLast Update : Fri Jul 19 01:19:13 2019  
 Response via : Initial Calibration  
 Integrator: ChemStation

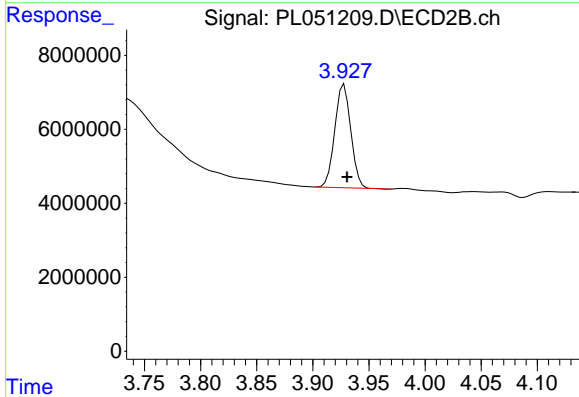
Volume Inj. : 1 µl  
 Signal #1 Phase : ZB-MR2 Signal #2 Phase: ZB-MR1  
 Signal #1 Info : 30M x 0.32mm x0.2 Signal #2 Info : 30M x 0.32mm x0.5µm



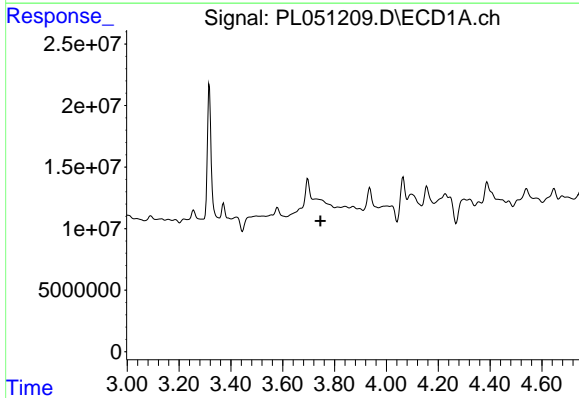


#1 Tetrachloro-m-xylene  
 R.T.: 3.317 min  
 Delta R.T.: -0.001 min  
 Response: 107260682  
 Conc: 10.67 ng/ml

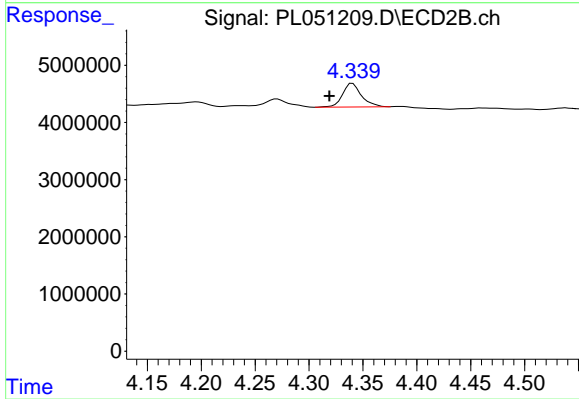
Instrument :  
 ECD\_L  
 ClientSampled :



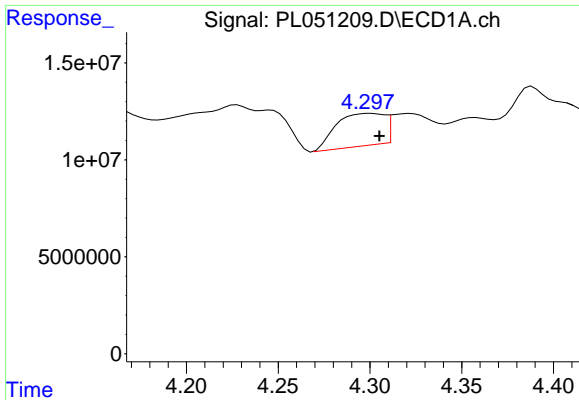
#1 Tetrachloro-m-xylene  
 R.T.: 3.928 min  
 Delta R.T.: -0.003 min  
 Response: 27705358  
 Conc: 9.71 ng/ml



#2 alpha-BHC  
 R.T.: 0.000 min  
 Exp R.T. : 3.746 min  
 Response: 0  
 Conc: N.D.

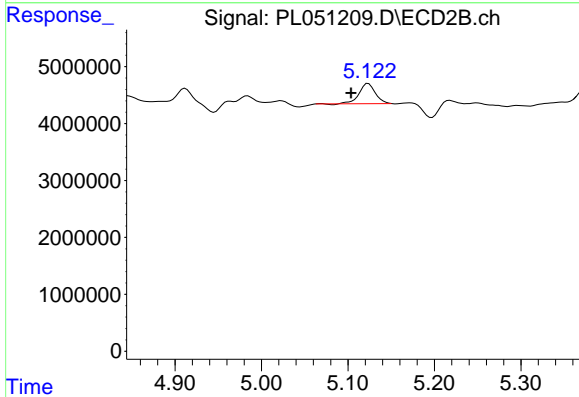


#2 alpha-BHC  
 R.T.: 4.340 min  
 Delta R.T.: 0.021 min  
 Response: 5026976  
 Conc: 1.22 ng/ml

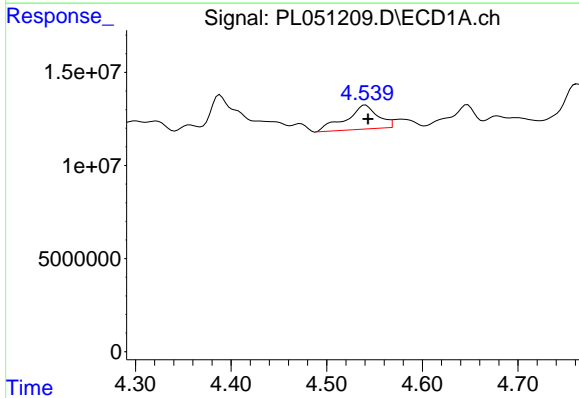


#4 Heptachlor  
 R.T.: 4.300 min  
 Delta R.T.: -0.005 min  
 Response: 30415759  
 Conc: 1.85 ng/ml

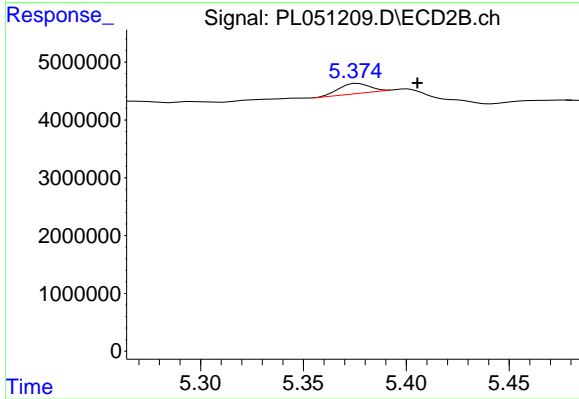
Instrument :  
 ECD\_L  
 ClientSampled :



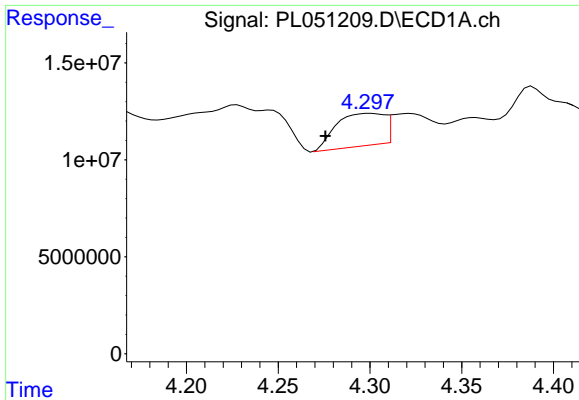
#4 Heptachlor  
 R.T.: 5.123 min  
 Delta R.T.: 0.020 min  
 Response: 4588770  
 Conc: 1.11 ng/ml



#5 Aldrin  
 R.T.: 4.541 min  
 Delta R.T.: -0.002 min  
 Response: 29735731  
 Conc: 1.92 ng/ml

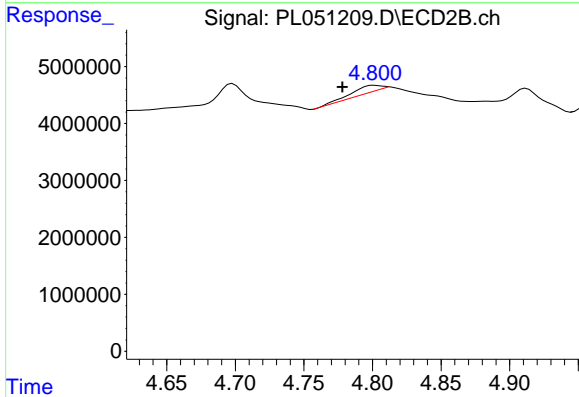


#5 Aldrin  
 R.T.: 5.377 min  
 Delta R.T.: -0.029 min  
 Response: 1788472  
 Conc: 0.47 ng/ml

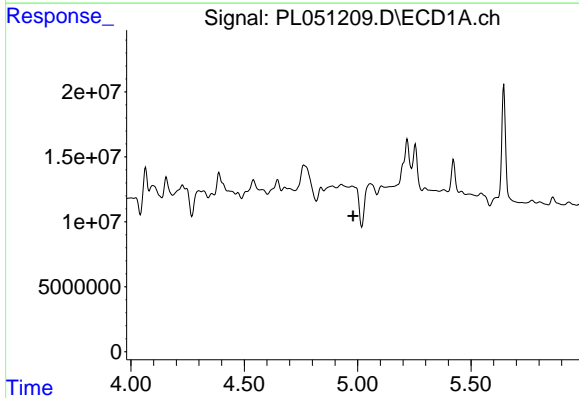


#6 beta-BHC  
 R.T.: 4.300 min  
 Delta R.T.: 0.025 min  
 Response: 30415759  
 Conc: 4.64 ng/ml

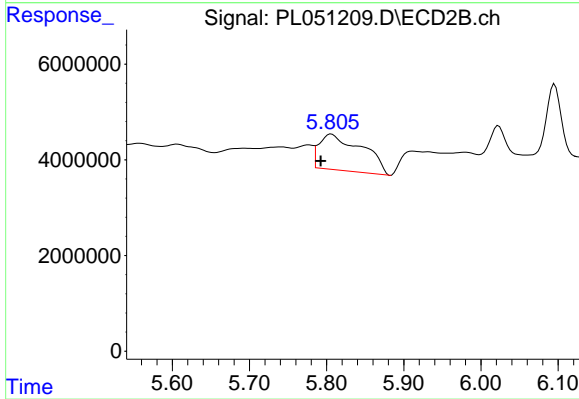
Instrument :  
 ECD\_L  
 ClientSampled :



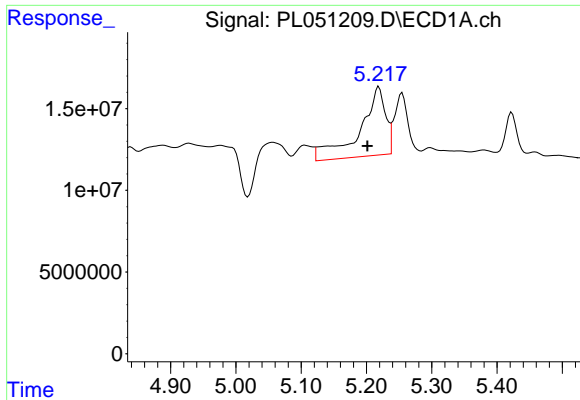
#6 beta-BHC  
 R.T.: 4.802 min  
 Delta R.T.: 0.023 min  
 Response: 1998782  
 Conc: 1.16 ng/ml



#8 Heptachlor epoxide  
 R.T.: 0.000 min  
 Exp R.T. : 4.979 min  
 Response: 0  
 Conc: N.D.



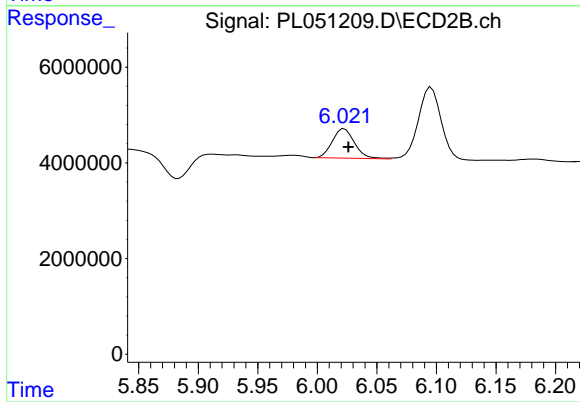
#8 Heptachlor epoxide  
 R.T.: 5.806 min  
 Delta R.T.: 0.013 min  
 Response: 29259463  
 Conc: 7.65 ng/ml



#10 gamma-Chlordane

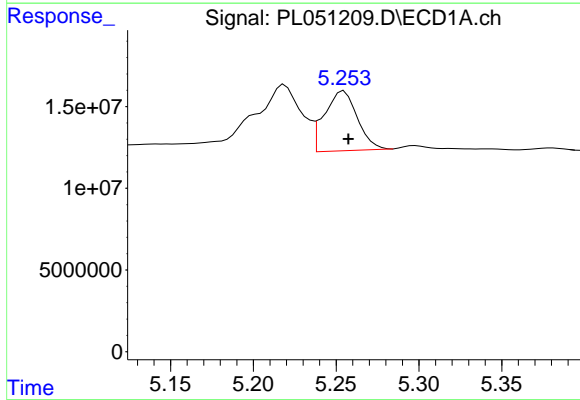
R.T.: 5.219 min  
 Delta R.T.: 0.017 min  
 Response: 114155455  
 Conc: 7.23 ng/ml

Instrument :  
 ECD\_L  
 ClientSampled :



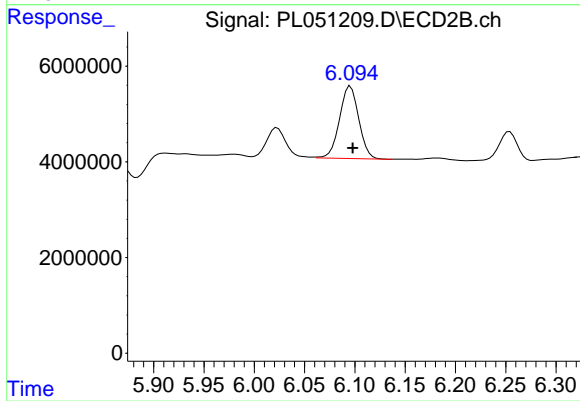
#10 gamma-Chlordane

R.T.: 6.023 min  
 Delta R.T.: -0.003 min  
 Response: 7983482  
 Conc: 2.16 ng/ml



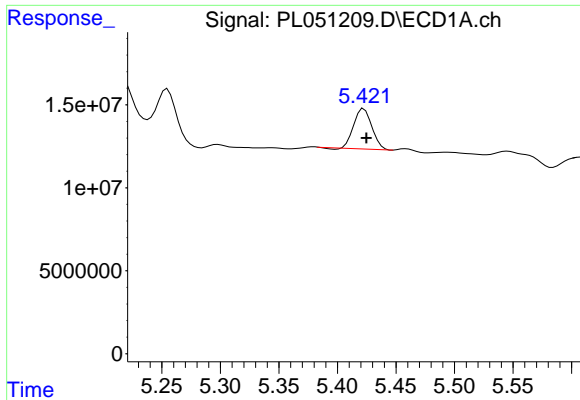
#11 alpha-Chlordane

R.T.: 5.255 min  
 Delta R.T.: -0.003 min  
 Response: 50679568  
 Conc: 3.32 ng/ml



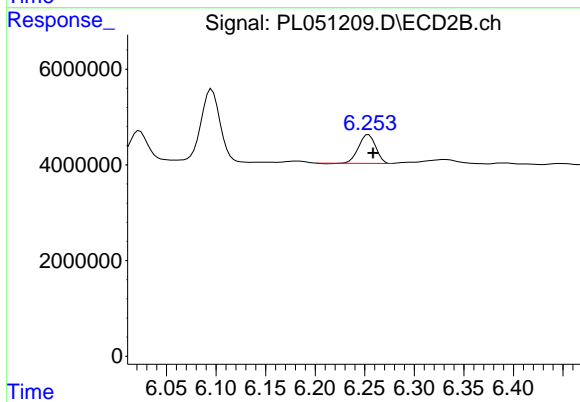
#11 alpha-Chlordane

R.T.: 6.096 min  
 Delta R.T.: -0.002 min  
 Response: 20042300  
 Conc: 5.47 ng/ml

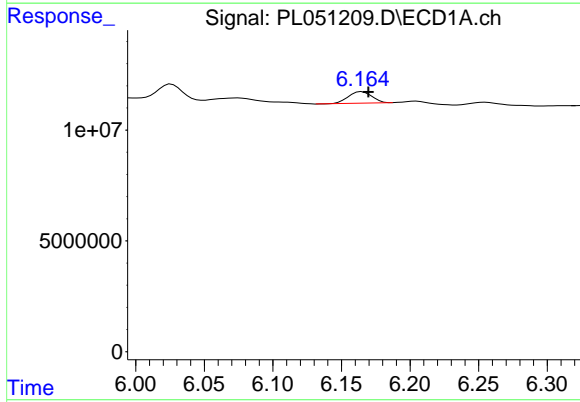


#12 4,4'-DDE  
 R.T.: 5.423 min  
 Delta R.T.: -0.002 min  
 Response: 26111950  
 Conc: 1.74 ng/ml

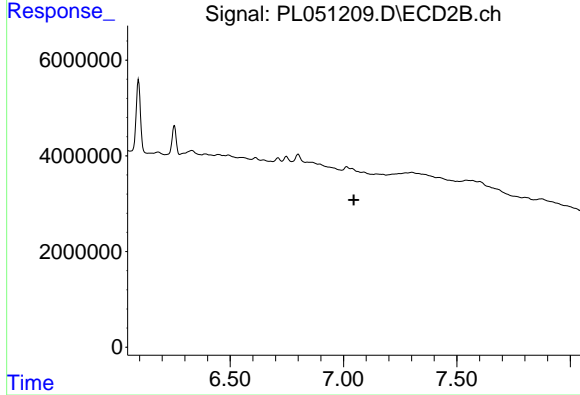
Instrument :  
 ECD\_L  
 ClientSampled :



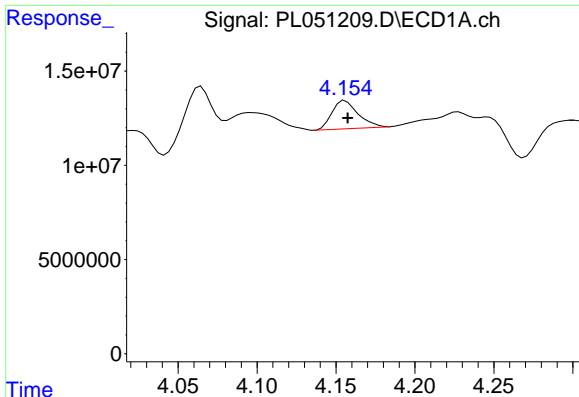
#12 4,4'-DDE  
 R.T.: 6.254 min  
 Delta R.T.: -0.004 min  
 Response: 7221312  
 Conc: 2.00 ng/ml



#17 4,4'-DDT  
 R.T.: 6.165 min  
 Delta R.T.: -0.005 min  
 Response: 6162897  
 Conc: 0.50 ng/ml



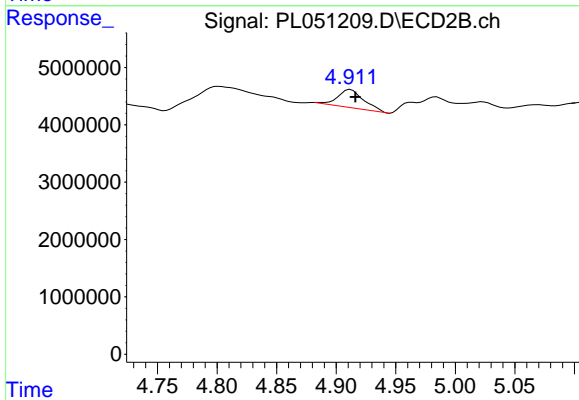
#17 4,4'-DDT  
 R.T.: 0.000 min  
 Exp R.T. : 7.046 min  
 Response: 0  
 Conc: N.D.



#23 Chlordane-1

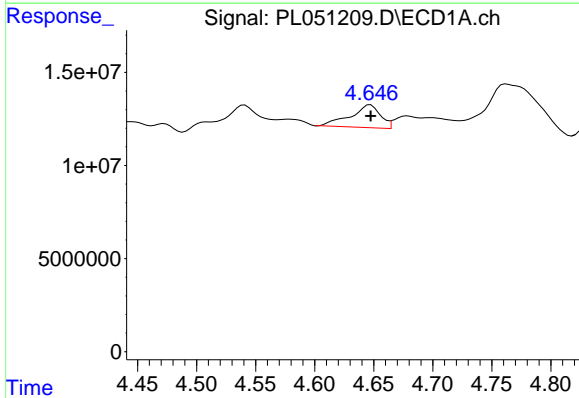
R.T.: 4.156 min  
 Delta R.T.: -0.002 min  
 Response: 17170190  
 Conc: 46.66 ng/ml

Instrument :  
 ECD\_L  
 ClientSampleId :



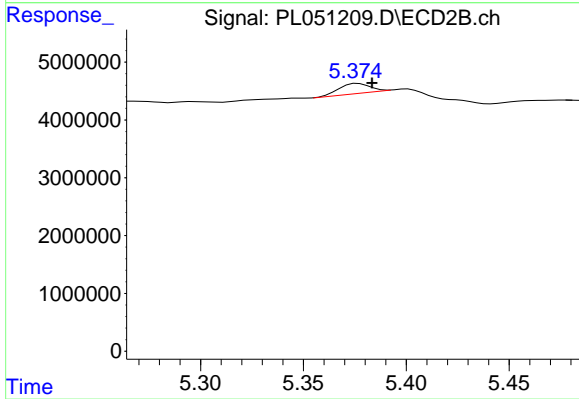
#23 Chlordane-1

R.T.: 4.912 min  
 Delta R.T.: -0.004 min  
 Response: 4825599  
 Conc: 44.48 ng/ml



#24 Chlordane-2

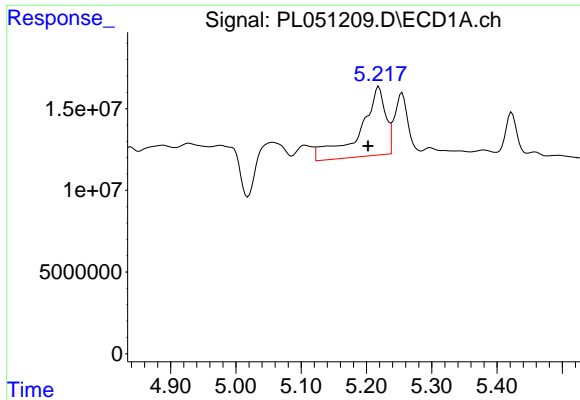
R.T.: 4.647 min  
 Delta R.T.: 0.000 min  
 Response: 21544589  
 Conc: 48.13 ng/ml



#24 Chlordane-2

R.T.: 5.377 min  
 Delta R.T.: -0.007 min  
 Response: 1788472  
 Conc: 15.23 ng/ml

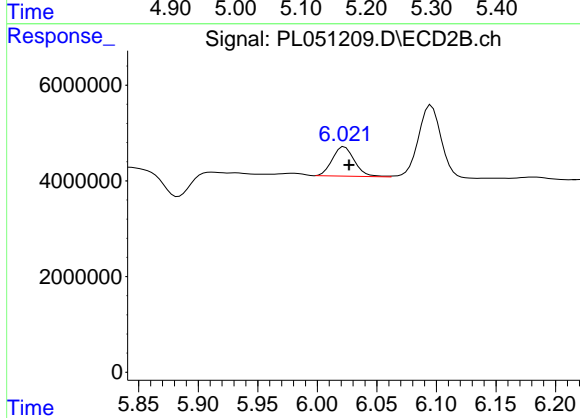




#25 Chlordane-3

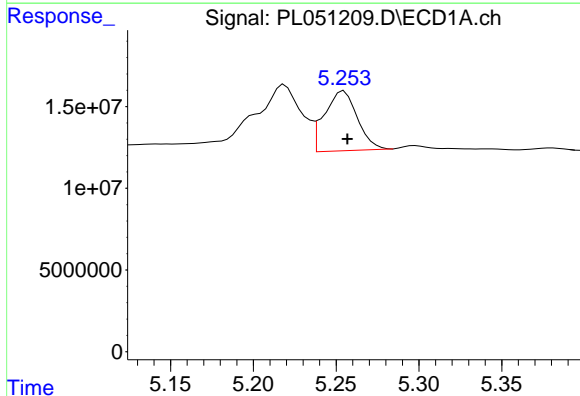
R.T.: 5.219 min  
 Delta R.T.: 0.016 min  
 Response: 114155455  
 Conc: 81.55 ng/ml

Instrument :  
 ECD\_L  
 ClientSampled :



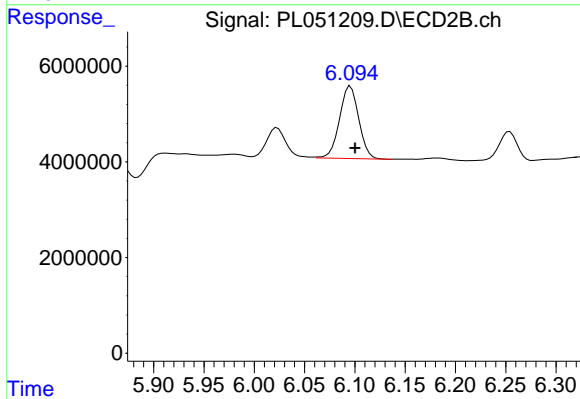
#25 Chlordane-3

R.T.: 6.023 min  
 Delta R.T.: -0.004 min  
 Response: 7983482  
 Conc: 16.60 ng/ml



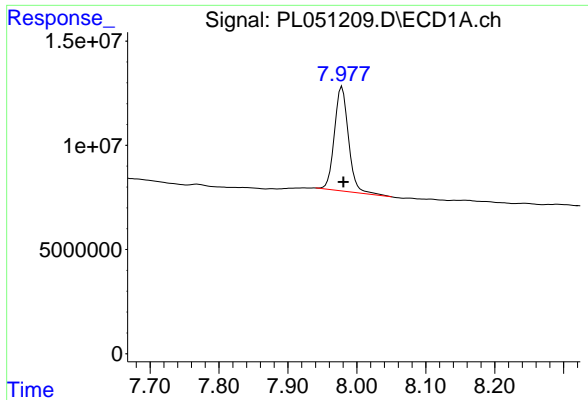
#26 Chlordane-4

R.T.: 5.255 min  
 Delta R.T.: -0.002 min  
 Response: 50679568  
 Conc: 38.42 ng/ml



#26 Chlordane-4

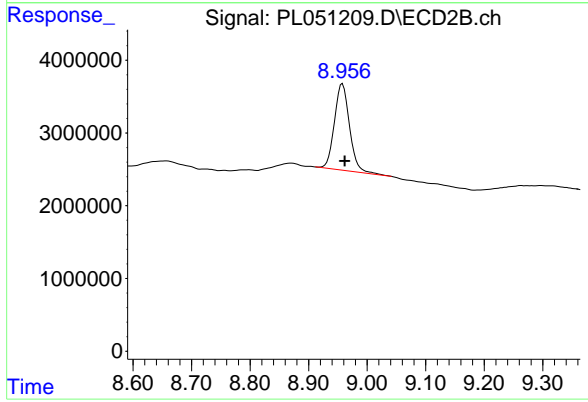
R.T.: 6.096 min  
 Delta R.T.: -0.005 min  
 Response: 20042300  
 Conc: 34.50 ng/ml



#28 Decachlorobiphenyl

R.T.: 7.979 min  
Delta R.T.: -0.002 min  
Response: 70952109  
Conc: 7.01 ng/ml

Instrument :  
ECD\_L  
ClientSampleId :



#28 Decachlorobiphenyl

R.T.: 8.958 min  
Delta R.T.: -0.004 min  
Response: 21197291  
Conc: 7.50 ng/ml