

Data Path : Z:\pestpcbsrv\HPCHEM1\ECD\_L\Data\PL080823\  
 Data File : PL084587.D  
 Signal(s) : Signal #1: ECD1A.ch Signal #2: ECD2B.ch  
 Acq On : 08 Aug 2023 17:03  
 Operator : AR\AJ  
 Sample : PB154702BL  
 Misc :  
 ALS Vial : 16 Sample Multiplier: 1

Instrument :  
 ECD\_L  
 ClientSampleId :

Integration File signal 1: autoint1.e  
 Integration File signal 2: autoint2.e  
 Quant Time: Aug 09 00:14:01 2023  
 Quant Method : Z:\pestpcbsrv\HPCHEM1\ECD\_L\methods\PL080323.M  
 Quant Title : GC Extractables  
 QLast Update : Thu Aug 03 16:21:43 2023  
 Response via : Initial Calibration  
 Integrator: ChemStation

Volume Inj. : 1 µl  
 Signal #1 Phase : ZB-MR2 Signal #2 Phase: ZB-MR1  
 Signal #1 Info : 30M x 0.32mm x0.2 Signal #2 Info : 30M x 0.32mm x0.5µm

Compound	RT#1	RT#2	Resp#1	Resp#2	ng/ml	ng/ml
-----						
System Monitoring Compounds						
1) SA Tetrachlo...	3.477	2.686	40690687	19715353	17.513	18.131
28) SA Decachlor...	9.028	7.868	32778903	24848268	20.146	19.930
Target Compounds						
2) A alpha-BHC	0.000	3.173f	0	26805	N.D.	0.017 #
4) MA Heptachlor	4.857	0.000	6994095	0	2.080	N.D. #
6) B beta-BHC	4.483f	0.000	1040866	0	0.745	N.D. #
7) B delta-BHC	4.716	0.000	4065173	0	1.261	N.D. #
8) B Heptachlo...	0.000	4.659	0	36559	N.D.	0.028 #
9) A Endosulfan I	0.000	4.998f	0	26645	N.D.	0.022 #
10) B gamma-Chl...	0.000	4.904	0	31224	N.D.	0.023 #
11) B alpha-Chl...	0.000	4.963	0	93241	N.D.	0.068 #
13) MA Dieldrin	0.000	5.289	0	16219	N.D.	0.012 #
14) MA Endrin	0.000	5.583f	0	481084	N.D.	0.393 #
15) B Endosulfa...	6.734	5.837f	568486	317972	0.269	0.264
17) MA 4,4'-DDT	0.000	5.998f	0	21568	N.D.	0.019 #
18) B Endrin al...	0.000	6.047	0	20772	N.D.	0.021 #
19) B Endosulfa...	0.000	6.260	0	30384	N.D.	0.026 #
20) A Methoxychlor	0.000	6.553	0	8648	N.D.	0.013 #
22) Mirex	0.000	6.940	0	23155	N.D.	0.020 #
23) Chlordane-1	0.000	3.704f	0	25715	N.D.	0.671 #
24) Chlordane-2	0.000	4.245f	0	35130	N.D.	0.701 #
25) Chlordane-3	0.000	4.904	0	31224	N.D.	0.225 #
26) Chlordane-4	0.000	4.963	0	93241	N.D.	0.650 #
27) Chlordane-5	0.000	5.837f	0	317972	N.D.	6.243 #

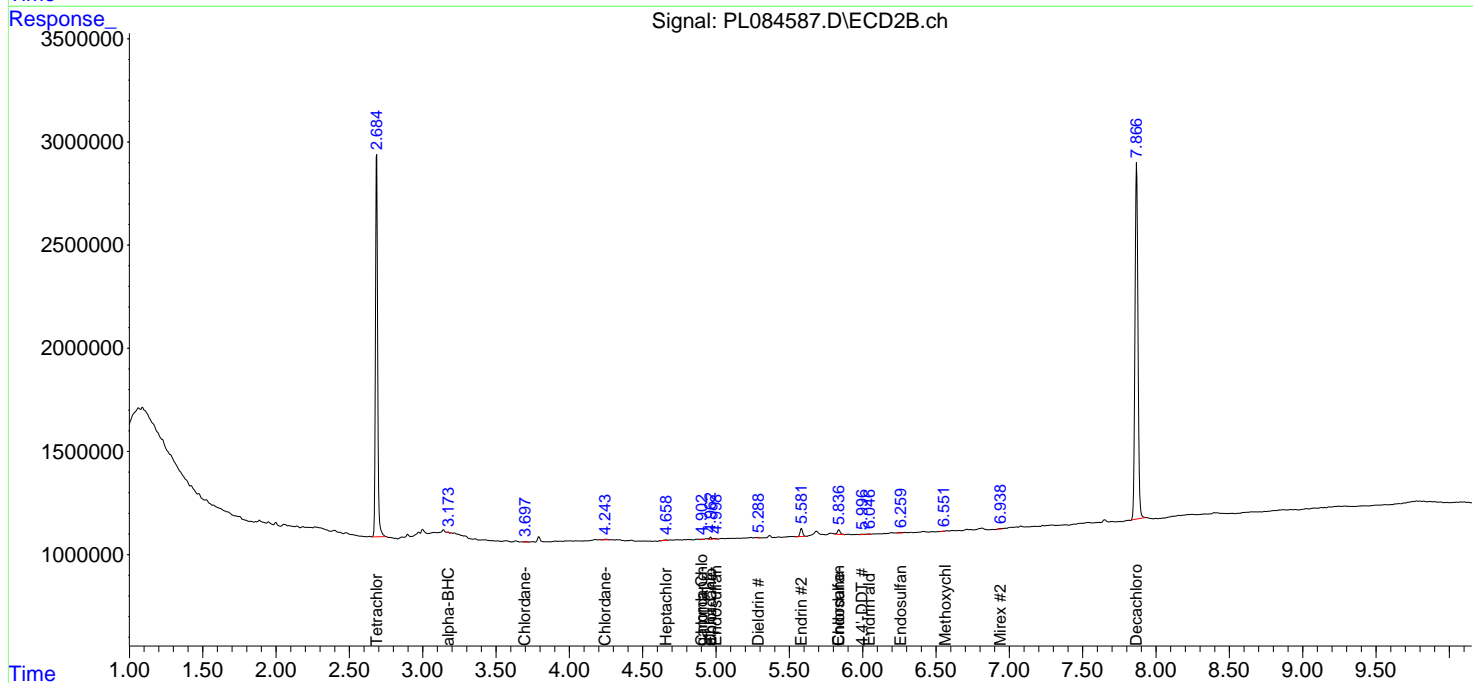
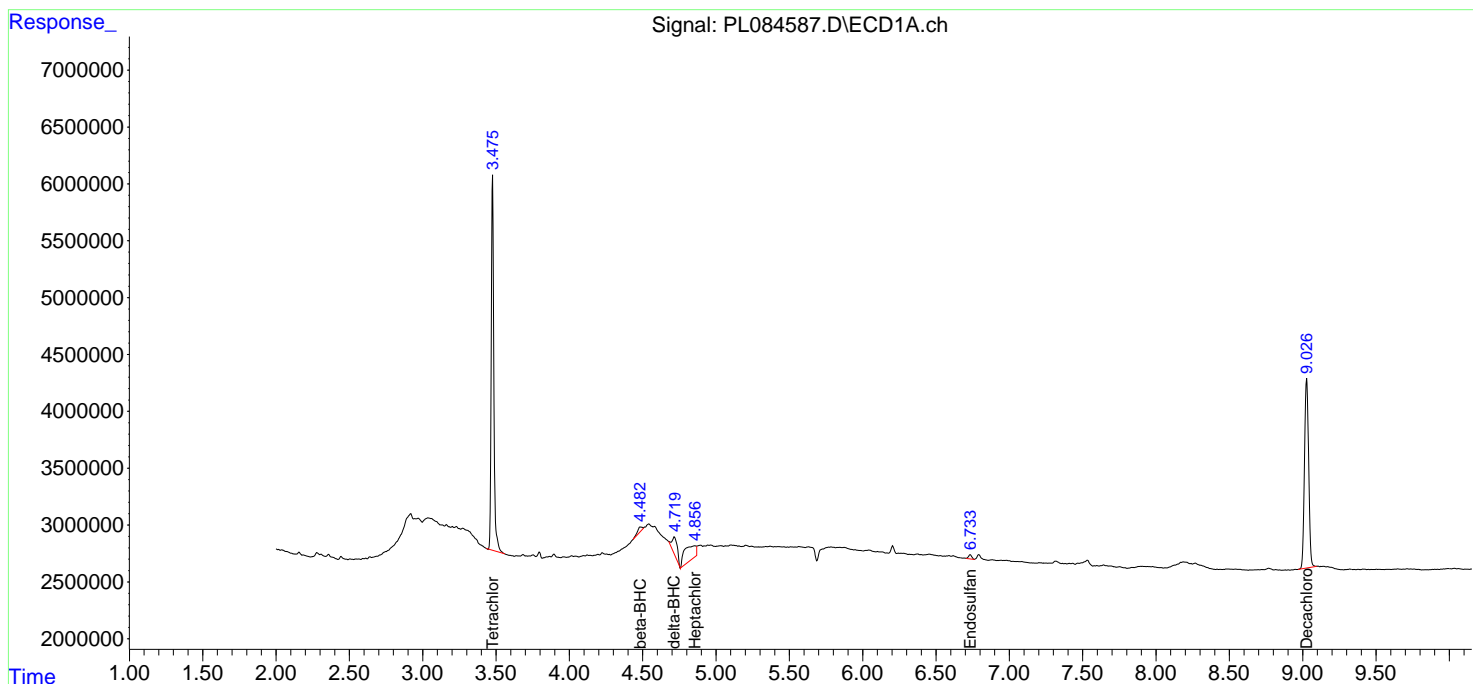
(f)=RT Delta > 1/2 Window (#)=Amounts differ by > 25% (m)=manual int.

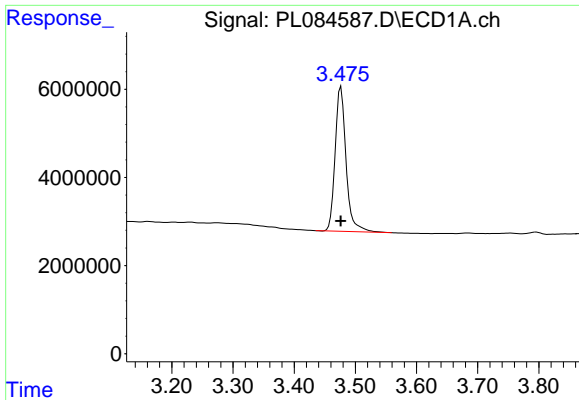
Data Path : Z:\pestpcbsrv\HPCHEM1\ECD\_L\Data\PL080823\  
 Data File : PL084587.D  
 Signal(s) : Signal #1: ECD1A.ch Signal #2: ECD2B.ch  
 Acq On : 08 Aug 2023 17:03  
 Operator : AR\AJ  
 Sample : PB154702BL  
 Misc :  
 ALS Vial : 16 Sample Multiplier: 1

Instrument :  
 ECD\_L  
 ClientSampleId :

Integration File signal 1: autoint1.e  
 Integration File signal 2: autoint2.e  
 Quant Time: Aug 09 00:14:01 2023  
 Quant Method : Z:\pestpcbsrv\HPCHEM1\ECD\_L\methods\PL080323.M  
 Quant Title : GC Extractables  
 QLast Update : Thu Aug 03 16:21:43 2023  
 Response via : Initial Calibration  
 Integrator: ChemStation

Volume Inj. : 1 µl  
 Signal #1 Phase : ZB-MR2 Signal #2 Phase: ZB-MR1  
 Signal #1 Info : 30M x 0.32mm x0.2 Signal #2 Info : 30M x 0.32mm x0.5µm

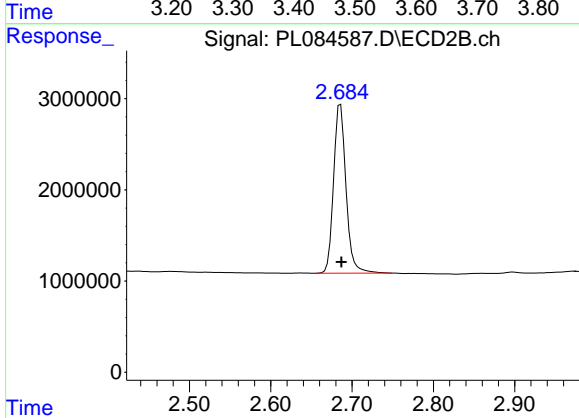




#1 Tetrachloro-m-xylene

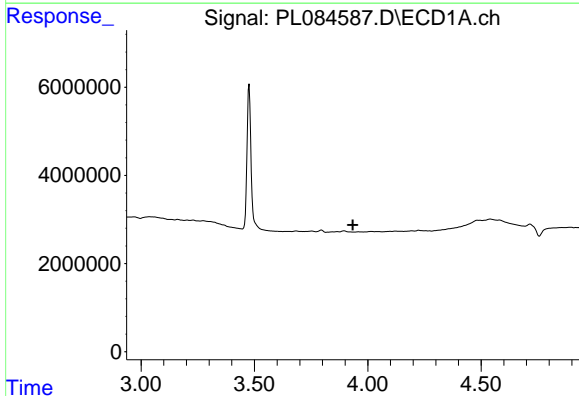
R.T.: 3.477 min  
 Delta R.T.: 0.000 min  
 Response: 40690687  
 Conc: 17.51 ng/ml

Instrument :  
 ECD\_L  
 ClientSampleId :



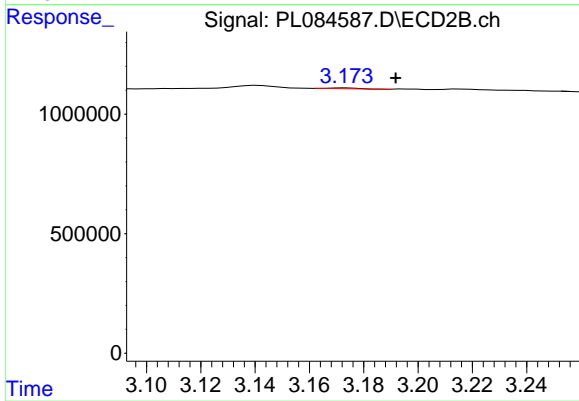
#1 Tetrachloro-m-xylene

R.T.: 2.686 min  
 Delta R.T.: -0.001 min  
 Response: 19715353  
 Conc: 18.13 ng/ml



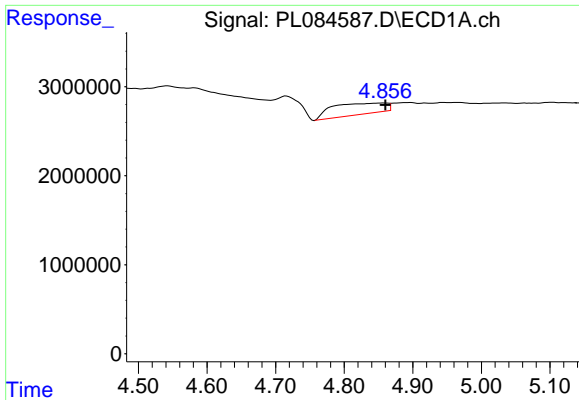
#2 alpha-BHC

R.T.: 0.000 min  
 Exp R.T. : 3.934 min  
 Response: 0  
 Conc: N.D.



#2 alpha-BHC

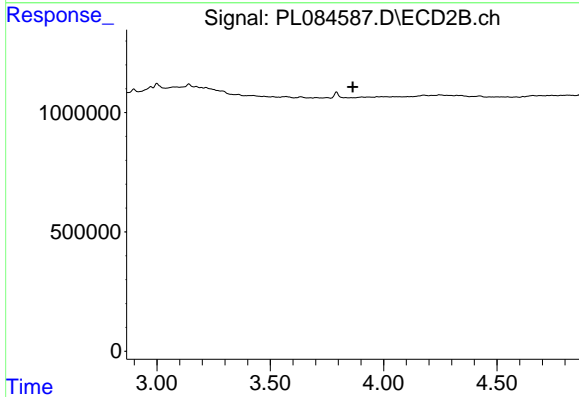
R.T.: 3.173 min  
 Delta R.T.: -0.018 min  
 Response: 26805  
 Conc: 0.02 ng/ml



#4 Heptachlor

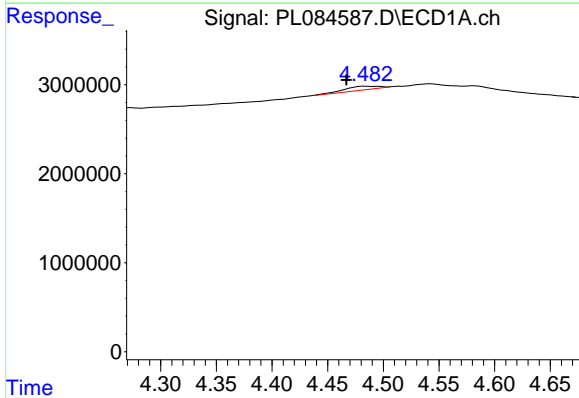
R.T.: 4.857 min  
 Delta R.T.: -0.003 min  
 Response: 6994095  
 Conc: 2.08 ng/ml

Instrument :  
 ECD\_L  
 ClientSampleId :



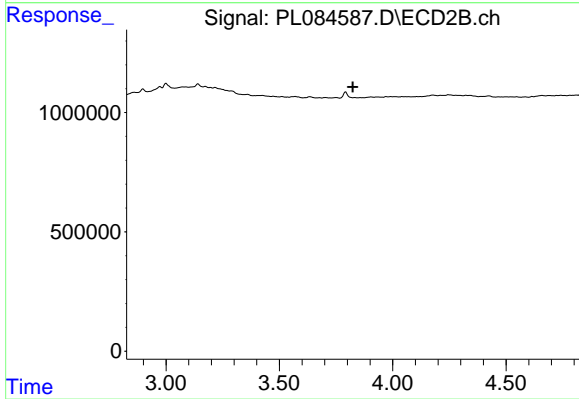
#4 Heptachlor

R.T.: 0.000 min  
 Exp R.T. : 3.863 min  
 Response: 0  
 Conc: N.D.



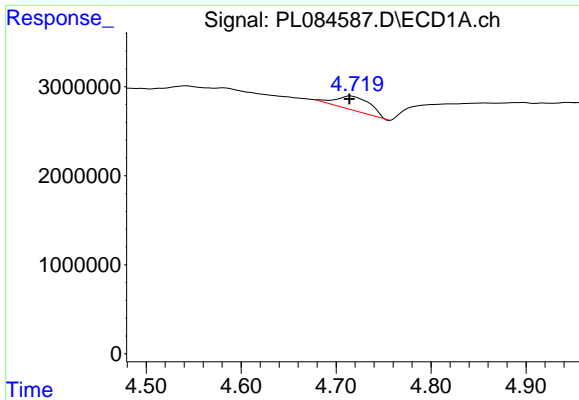
#6 beta-BHC

R.T.: 4.483 min  
 Delta R.T.: 0.016 min  
 Response: 1040866  
 Conc: 0.75 ng/ml



#6 beta-BHC

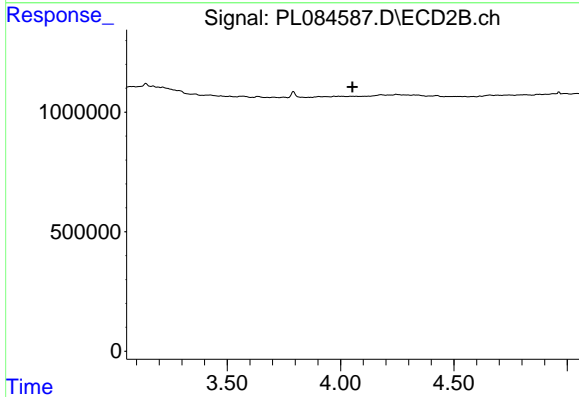
R.T.: 0.000 min  
 Exp R.T. : 3.824 min  
 Response: 0  
 Conc: N.D.



#7 delta-BHC

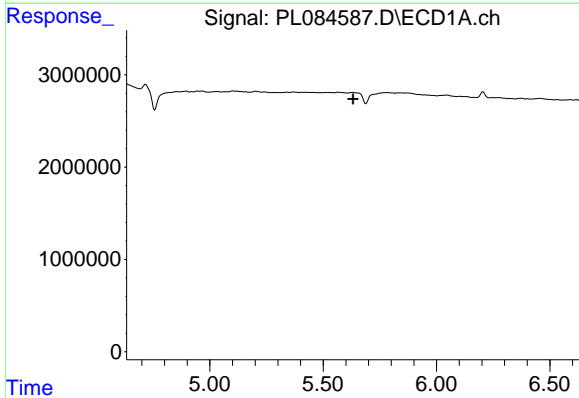
R.T.: 4.716 min  
 Delta R.T.: 0.002 min  
 Response: 4065173  
 Conc: 1.26 ng/ml

Instrument :  
 ECD\_L  
 ClientSampleId :



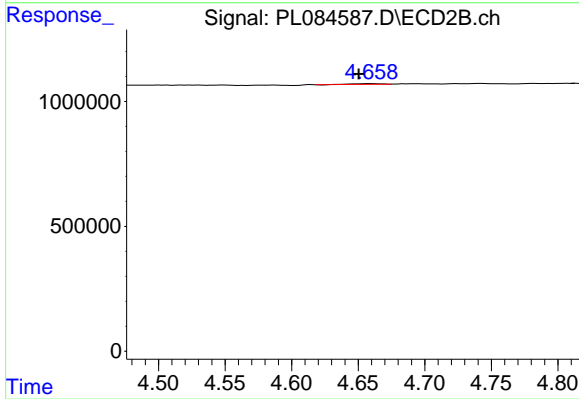
#7 delta-BHC

R.T.: 0.000 min  
 Exp R.T. : 4.053 min  
 Response: 0  
 Conc: N.D.



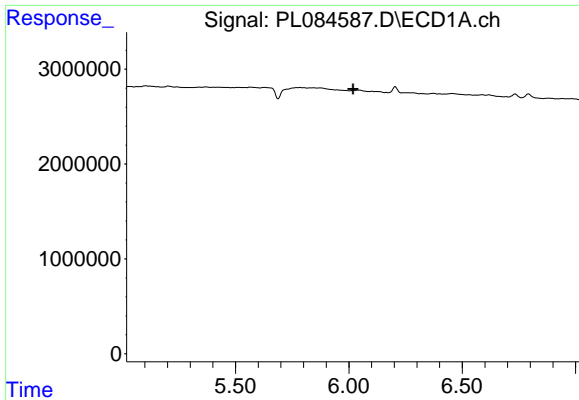
#8 Heptachlor epoxide

R.T.: 0.000 min  
 Exp R.T. : 5.632 min  
 Response: 0  
 Conc: N.D.



#8 Heptachlor epoxide

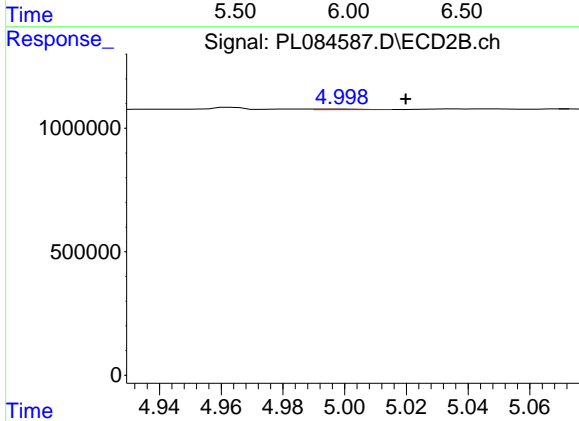
R.T.: 4.659 min  
 Delta R.T.: 0.009 min  
 Response: 36559  
 Conc: 0.03 ng/ml



#9 Endosulfan I

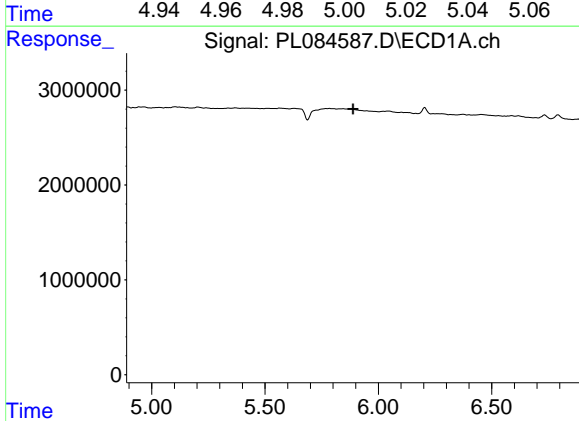
R.T.: 0.000 min  
 Exp R.T.: 6.018 min  
 Response: 0  
 Conc: N.D.

Instrument :  
 ECD\_L  
 ClientSampleId :



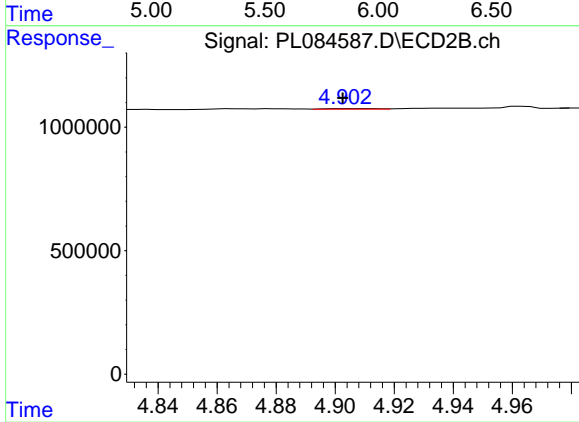
#9 Endosulfan I

R.T.: 4.998 min  
 Delta R.T.: -0.021 min  
 Response: 26645  
 Conc: 0.02 ng/ml



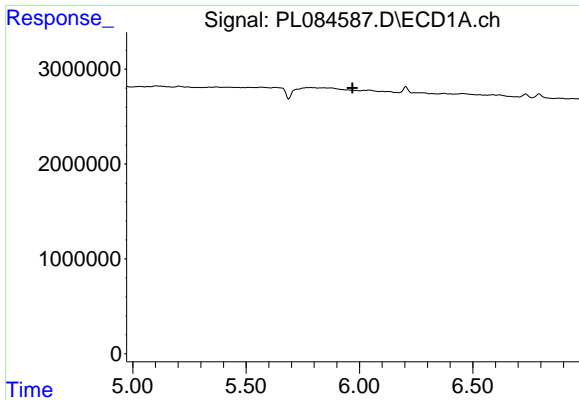
#10 gamma-Chlordane

R.T.: 0.000 min  
 Exp R.T.: 5.889 min  
 Response: 0  
 Conc: N.D.



#10 gamma-Chlordane

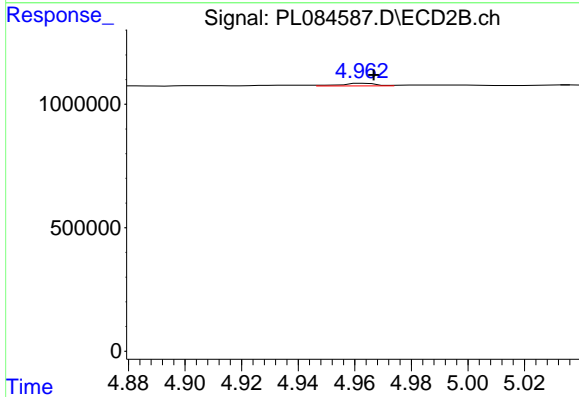
R.T.: 4.904 min  
 Delta R.T.: 0.001 min  
 Response: 31224  
 Conc: 0.02 ng/ml



#11 alpha-Chlordane

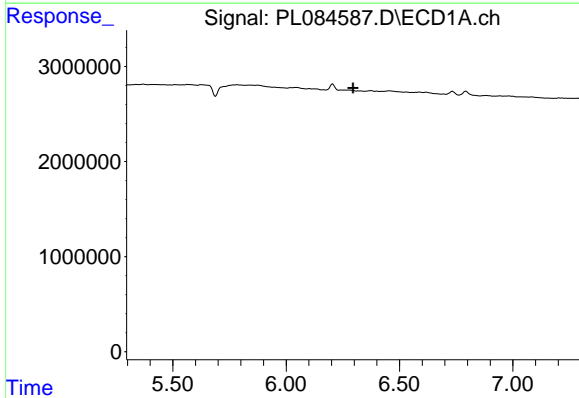
R.T.: 0.000 min  
 Exp R.T.: 5.970 min  
 Response: 0  
 Conc: N.D.

Instrument :  
 ECD\_L  
 ClientSampleId :



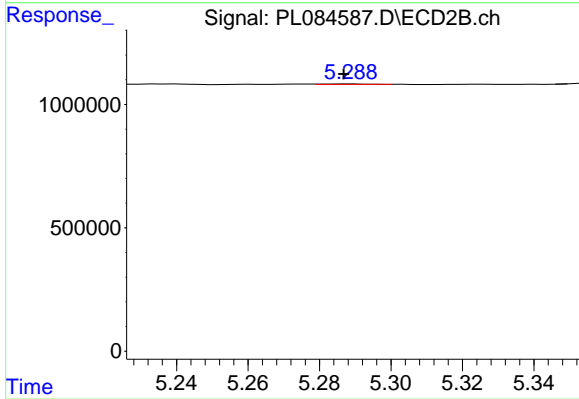
#11 alpha-Chlordane

R.T.: 4.963 min  
 Delta R.T.: -0.003 min  
 Response: 93241  
 Conc: 0.07 ng/ml



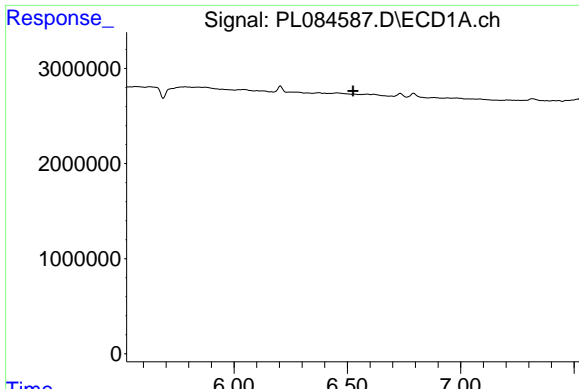
#13 Dieldrin

R.T.: 0.000 min  
 Exp R.T.: 6.295 min  
 Response: 0  
 Conc: N.D.



#13 Dieldrin

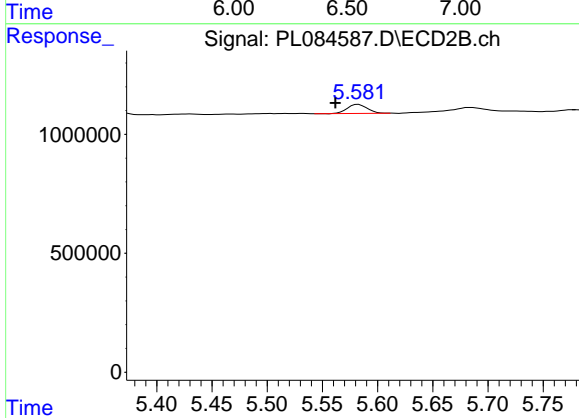
R.T.: 5.289 min  
 Delta R.T.: 0.002 min  
 Response: 16219  
 Conc: 0.01 ng/ml



#14 Endrin

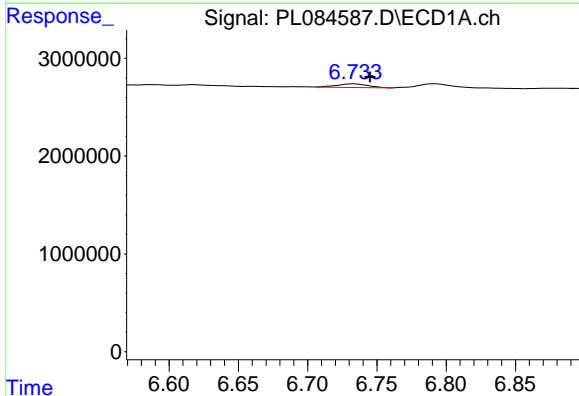
R.T.: 0.000 min  
 Exp R.T.: 6.525 min  
 Response: 0  
 Conc: N.D.

Instrument :  
 ECD\_L  
 ClientSampleId :



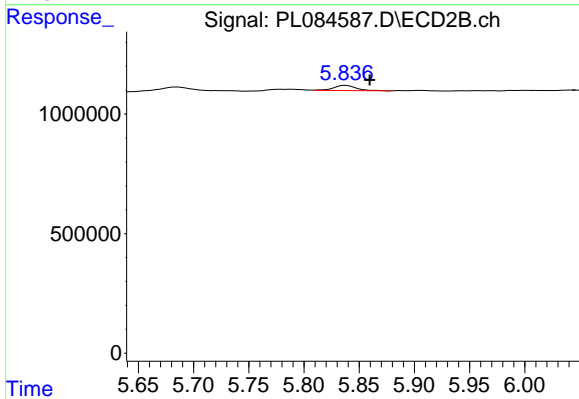
#14 Endrin

R.T.: 5.583 min  
 Delta R.T.: 0.021 min  
 Response: 481084  
 Conc: 0.39 ng/ml



#15 Endosulfan II

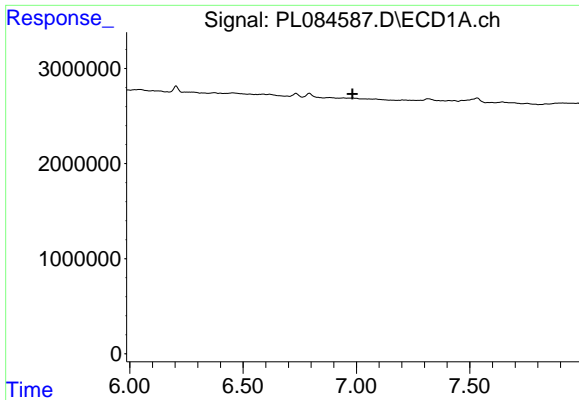
R.T.: 6.734 min  
 Delta R.T.: -0.012 min  
 Response: 568486  
 Conc: 0.27 ng/ml



#15 Endosulfan II

R.T.: 5.837 min  
 Delta R.T.: -0.022 min  
 Response: 317972  
 Conc: 0.26 ng/ml

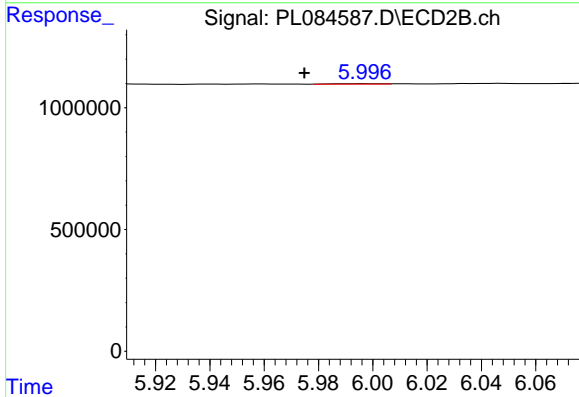




#17 4,4'-DDT

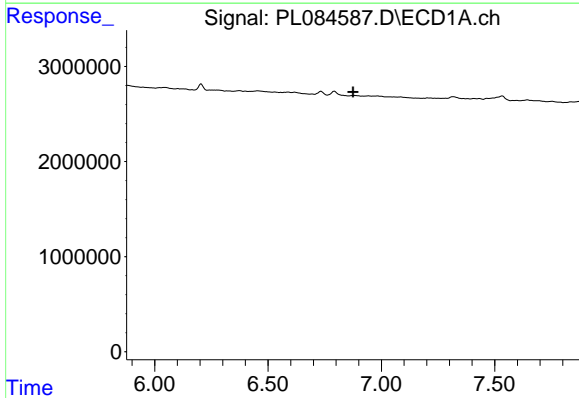
R.T.: 0.000 min  
 Exp R.T.: 6.983 min  
 Response: 0  
 Conc: N.D.

Instrument :  
 ECD\_L  
 ClientSampleId :



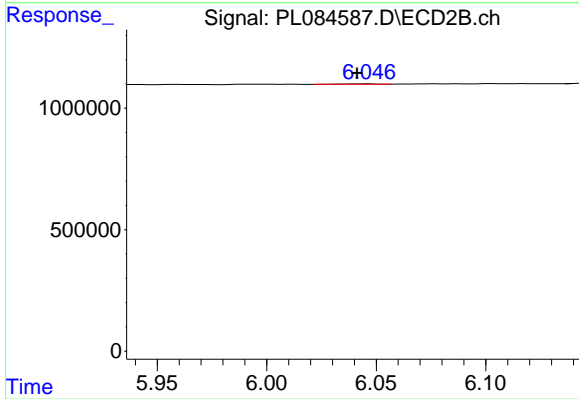
#17 4,4'-DDT

R.T.: 5.998 min  
 Delta R.T.: 0.023 min  
 Response: 21568  
 Conc: 0.02 ng/ml



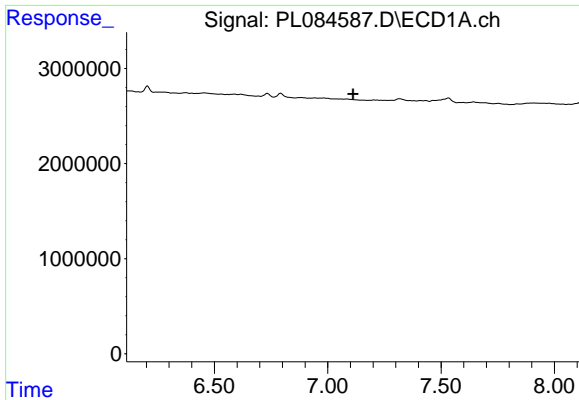
#18 Endrin aldehyde

R.T.: 0.000 min  
 Exp R.T.: 6.876 min  
 Response: 0  
 Conc: N.D.



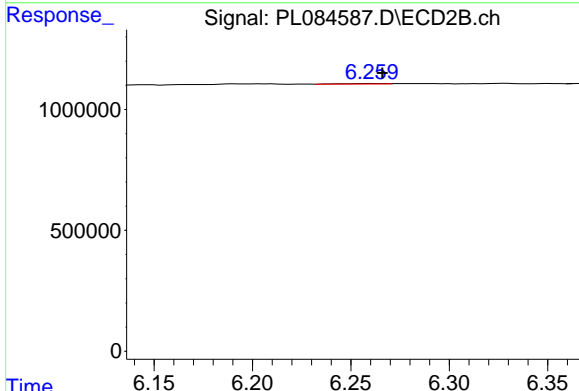
#18 Endrin aldehyde

R.T.: 6.047 min  
 Delta R.T.: 0.006 min  
 Response: 20772  
 Conc: 0.02 ng/ml

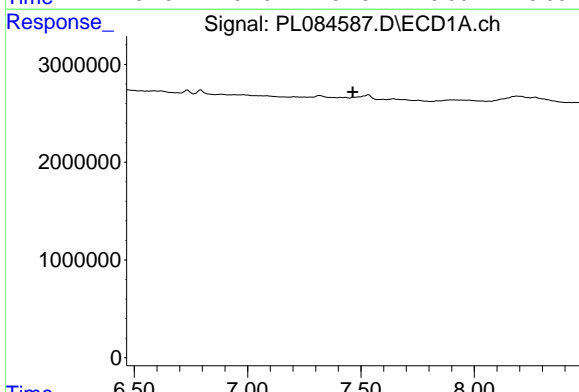


#19 Endosulfan Sulfate  
 R.T.: 0.000 min  
 Exp R.T. : 7.112 min  
 Response: 0  
 Conc: N.D.

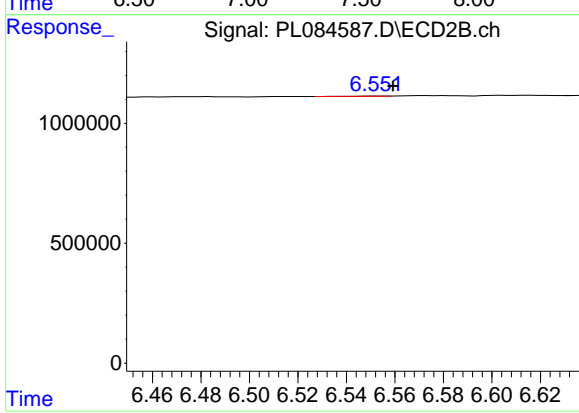
Instrument :  
 ECD\_L  
 ClientSampleId :



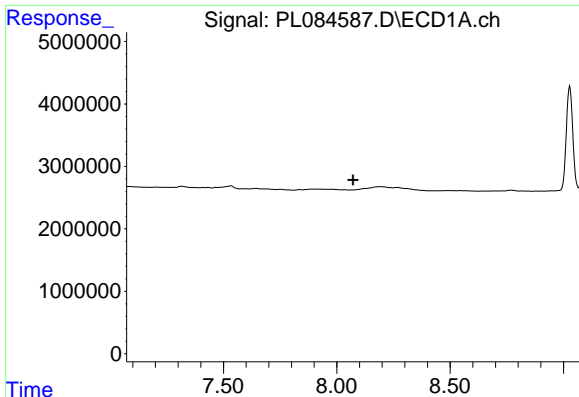
#19 Endosulfan Sulfate  
 R.T.: 6.260 min  
 Delta R.T.: -0.006 min  
 Response: 30384  
 Conc: 0.03 ng/ml



#20 Methoxychlor  
 R.T.: 0.000 min  
 Exp R.T. : 7.464 min  
 Response: 0  
 Conc: N.D.



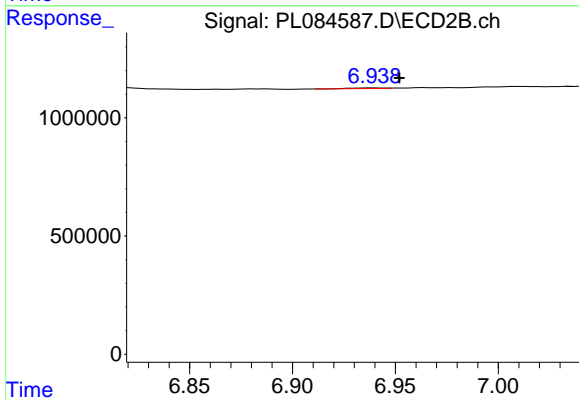
#20 Methoxychlor  
 R.T.: 6.553 min  
 Delta R.T.: -0.006 min  
 Response: 8648  
 Conc: 0.01 ng/ml



#22 Mirex

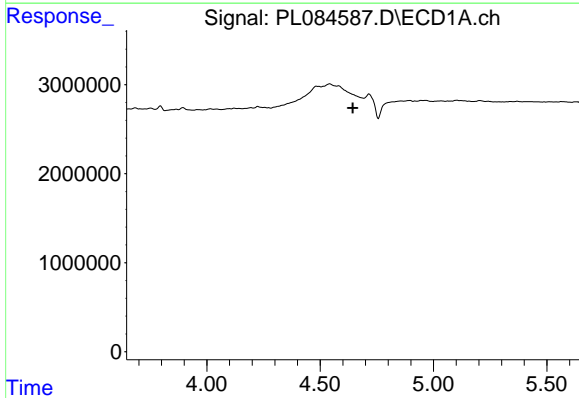
R.T.: 0.000 min  
 Exp R.T.: 8.071 min  
 Response: 0  
 Conc: N.D.

Instrument :  
 ECD\_L  
 ClientSampleId :



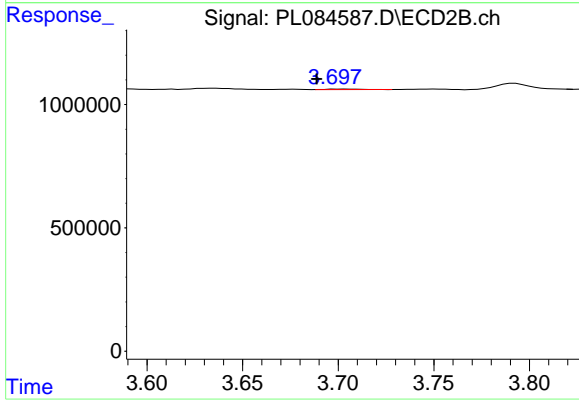
#22 Mirex

R.T.: 6.940 min  
 Delta R.T.: -0.012 min  
 Response: 23155  
 Conc: 0.02 ng/ml



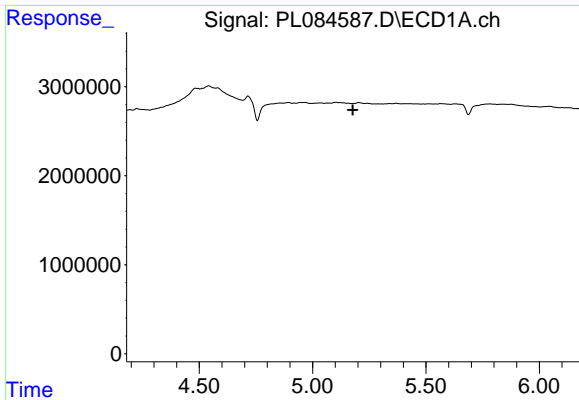
#23 Chlordane-1

R.T.: 0.000 min  
 Exp R.T.: 4.644 min  
 Response: 0  
 Conc: N.D.



#23 Chlordane-1

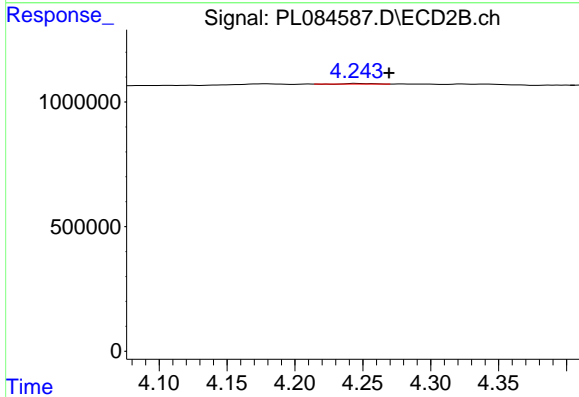
R.T.: 3.704 min  
 Delta R.T.: 0.016 min  
 Response: 25715  
 Conc: 0.67 ng/ml



#24 Chlordane-2

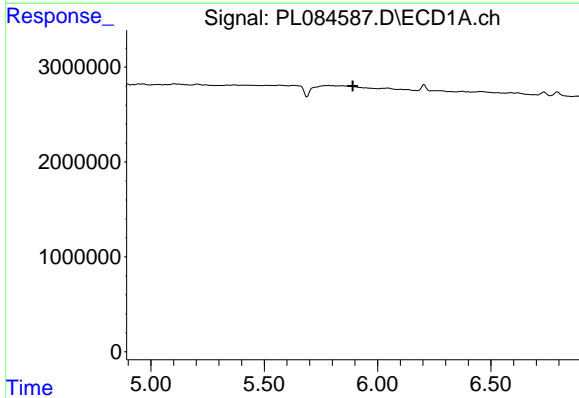
R.T.: 0.000 min  
 Exp R.T.: 5.177 min  
 Response: 0  
 Conc: N.D.

Instrument :  
 ECD\_L  
 ClientSampleId :



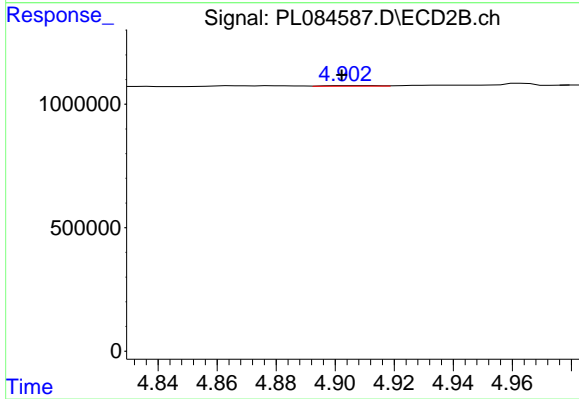
#24 Chlordane-2

R.T.: 4.245 min  
 Delta R.T.: -0.024 min  
 Response: 35130  
 Conc: 0.70 ng/ml



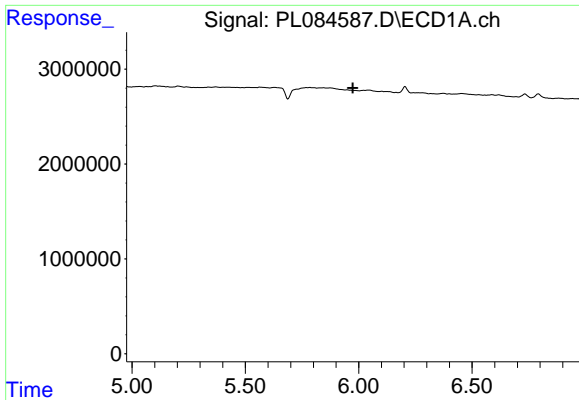
#25 Chlordane-3

R.T.: 0.000 min  
 Exp R.T.: 5.890 min  
 Response: 0  
 Conc: N.D.



#25 Chlordane-3

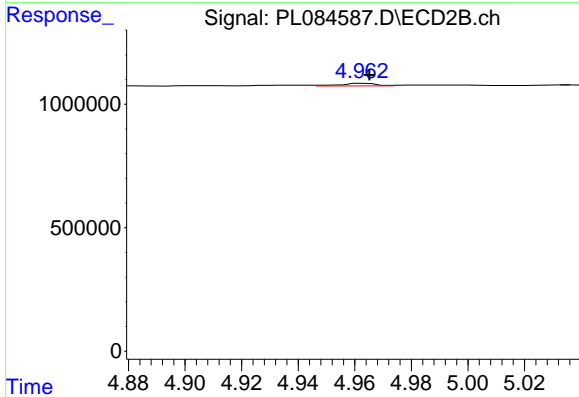
R.T.: 4.904 min  
 Delta R.T.: 0.002 min  
 Response: 31224  
 Conc: 0.23 ng/ml



#26 Chlordane-4

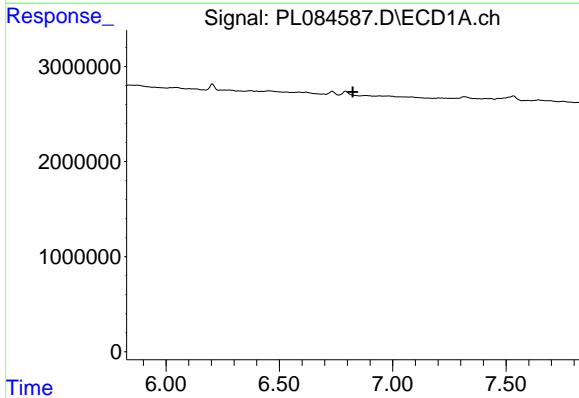
R.T.: 0.000 min  
 Exp R.T.: 5.973 min  
 Response: 0  
 Conc: N.D.

Instrument :  
 ECD\_L  
 ClientSampleId :



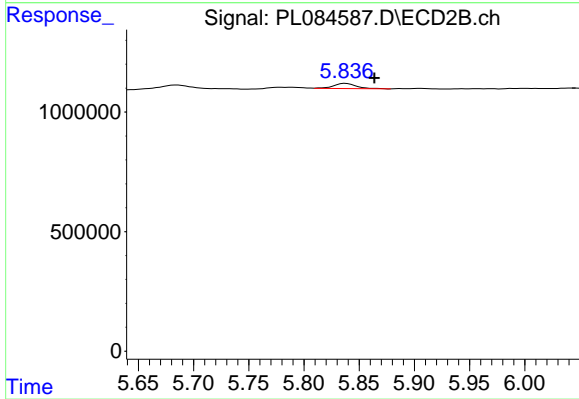
#26 Chlordane-4

R.T.: 4.963 min  
 Delta R.T.: -0.002 min  
 Response: 93241  
 Conc: 0.65 ng/ml



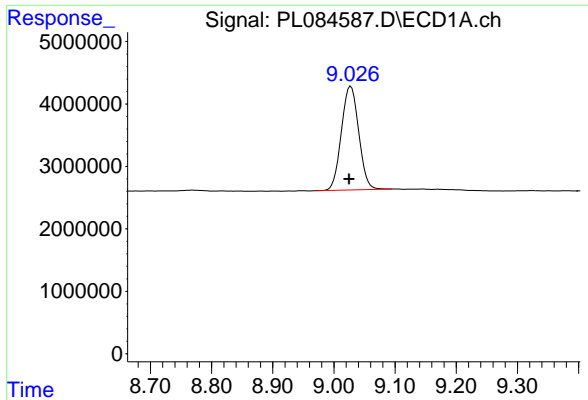
#27 Chlordane-5

R.T.: 0.000 min  
 Exp R.T.: 6.824 min  
 Response: 0  
 Conc: N.D.



#27 Chlordane-5

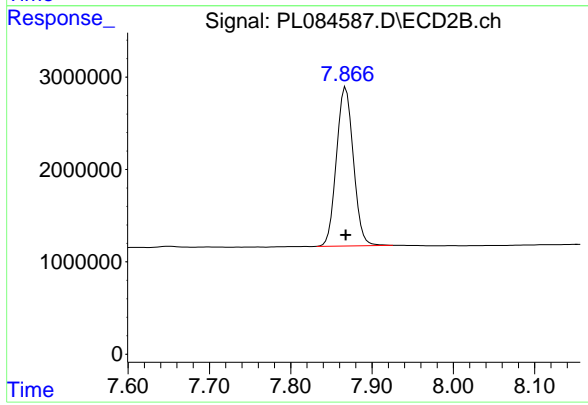
R.T.: 5.837 min  
 Delta R.T.: -0.026 min  
 Response: 317972  
 Conc: 6.24 ng/ml



#28 Decachlorobiphenyl

R.T.: 9.028 min  
Delta R.T.: 0.003 min  
Response: 32778903  
Conc: 20.15 ng/ml

Instrument :  
ECD\_L  
ClientSampleId :



#28 Decachlorobiphenyl

R.T.: 7.868 min  
Delta R.T.: 0.000 min  
Response: 24848268  
Conc: 19.93 ng/ml