

Data Path : Z:\pestpcbsrv\HPCHEM1\ECD\_L\Data\PL080823\  
 Data File : PL084570.D  
 Signal(s) : Signal #1: ECD1A.ch Signal #2: ECD2B.ch  
 Acq On : 08 Aug 2023 08:42  
 Operator : AR\AJ  
 Sample : PEM  
 Misc :  
 ALS Vial : 3 Sample Multiplier: 1

Instrument :  
 ECD\_L  
 ClientSampleId :  
 PEM

Integration File signal 1: autoint1.e  
 Integration File signal 2: autoint2.e  
 Quant Time: Aug 09 00:02:12 2023  
 Quant Method : Z:\pestpcbsrv\HPCHEM1\ECD\_L\methods\PL080323.M  
 Quant Title : GC Extractables  
 QLast Update : Thu Aug 03 16:21:43 2023  
 Response via : Initial Calibration  
 Integrator: ChemStation

Volume Inj. : 1 µl  
 Signal #1 Phase : ZB-MR2 Signal #2 Phase: ZB-MR1  
 Signal #1 Info : 30M x 0.32mm x0.2 Signal #2 Info : 30M x 0.32mm x0.5µm

	Compound	RT#1	RT#2	Resp#1	Resp#2	ng/ml	ng/ml
-----							
System Monitoring Compounds							
1)	SA Tetrachlo...	3.478	2.686	48968503	23049554	21.076	21.197
28)	SA Decachlor...	9.030	7.869	34458402	26210506	21.178	21.022
Target Compounds							
2)	A alpha-BHC	3.935	3.191	34226823	15759564	10.367	10.206
3)	MA gamma-BHC...	4.270	3.522	32752838	14902188	10.267	9.807
6)	B beta-BHC	4.470	3.824	16782875	7730252	12.014	11.537
12)	B 4,4'-DDE	6.151	5.164	651355	302790	0.284	0.246
14)	MA Endrin	6.528	5.562	101.0E6	60439498	46.294	49.411
16)	A 4,4'-DDD	6.670	5.723	3767741	2061938	2.247	1.996
17)	MA 4,4'-DDT	6.986	5.975	186.7E6	125.3E6	99.651	107.979
18)	B Endrin al...	6.880	6.042	3307056	2332266	1.960	2.352
20)	A Methoxychlor	7.468	6.560	219.3E6	153.6E6	228.559	223.867
21)	B Endrin ke...	7.598	6.771	6114474	4878879	3.057m	3.381

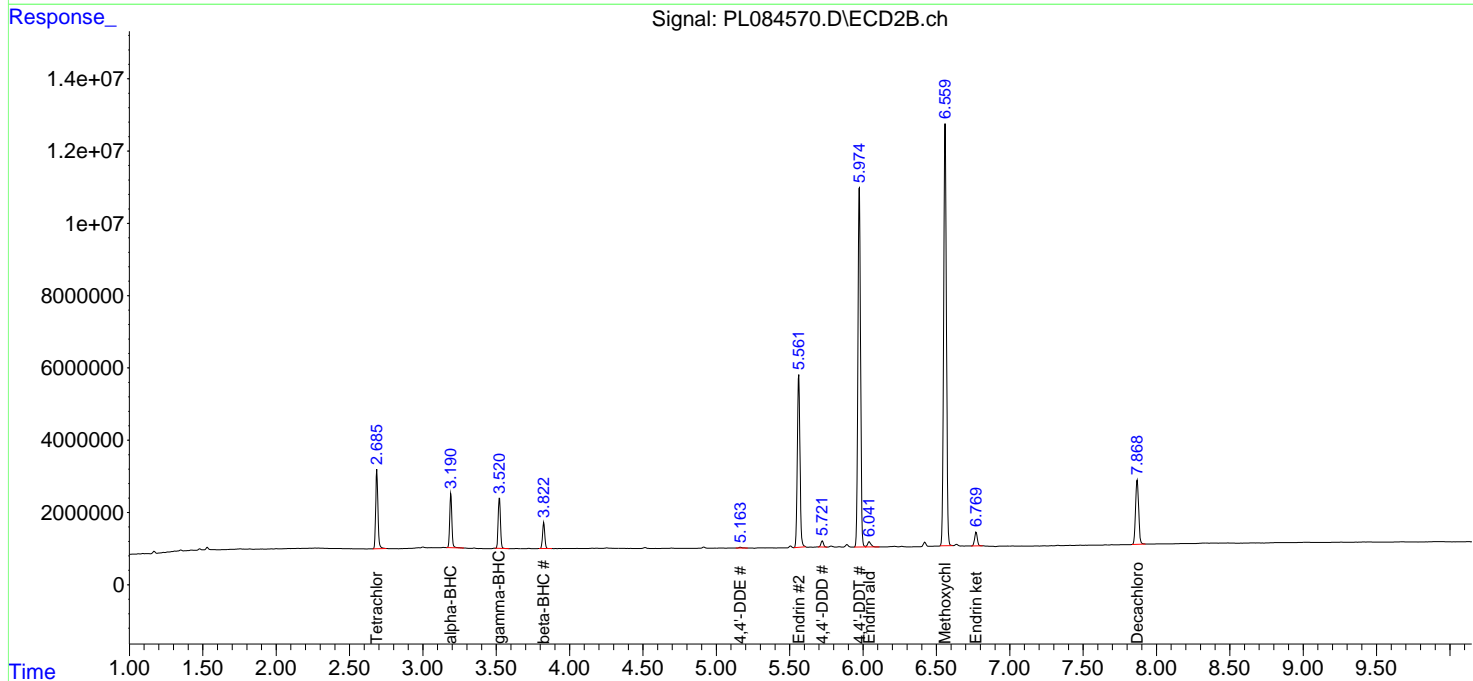
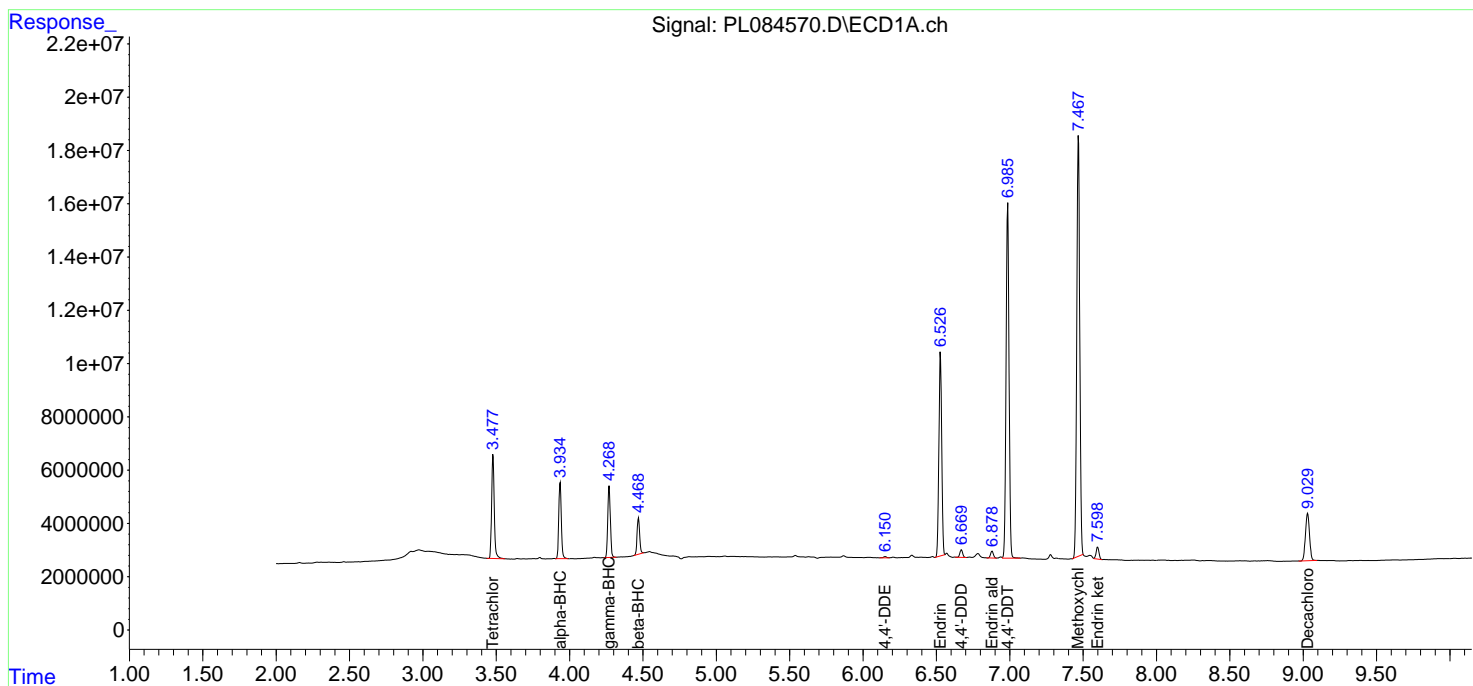
(f)=RT Delta > 1/2 Window (#)=Amounts differ by > 25% (m)=manual int.

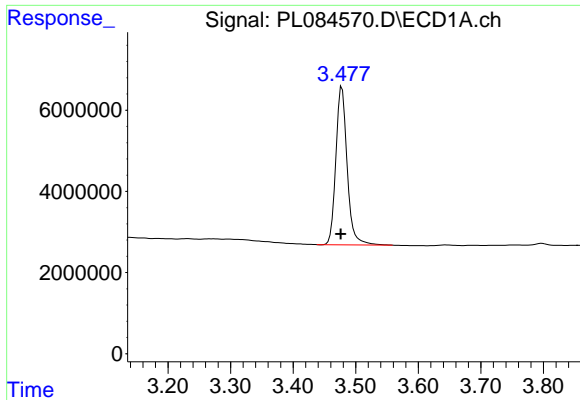
Data Path : Z:\pestpcbsrv\HPCHEM1\ECD\_L\Data\PL080823\  
 Data File : PL084570.D  
 Signal(s) : Signal #1: ECD1A.ch Signal #2: ECD2B.ch  
 Acq On : 08 Aug 2023 08:42  
 Operator : AR\AJ  
 Sample : PEM  
 Misc :  
 ALS Vial : 3 Sample Multiplier: 1

Instrument :  
 ECD\_L  
 ClientSampleId :  
 PEM

Integration File signal 1: autoint1.e  
 Integration File signal 2: autoint2.e  
 Quant Time: Aug 09 00:02:12 2023  
 Quant Method : Z:\pestpcbsrv\HPCHEM1\ECD\_L\methods\PL080323.M  
 Quant Title : GC Extractables  
 QLast Update : Thu Aug 03 16:21:43 2023  
 Response via : Initial Calibration  
 Integrator: ChemStation

Volume Inj. : 1 µl  
 Signal #1 Phase : ZB-MR2 Signal #2 Phase: ZB-MR1  
 Signal #1 Info : 30M x 0.32mm x0.2 Signal #2 Info : 30M x 0.32mm x0.5µm

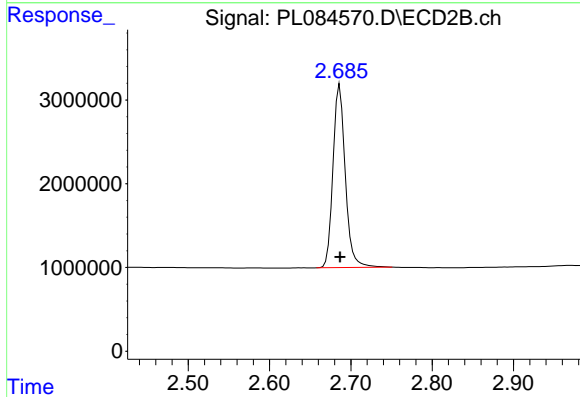




#1 Tetrachloro-m-xylene

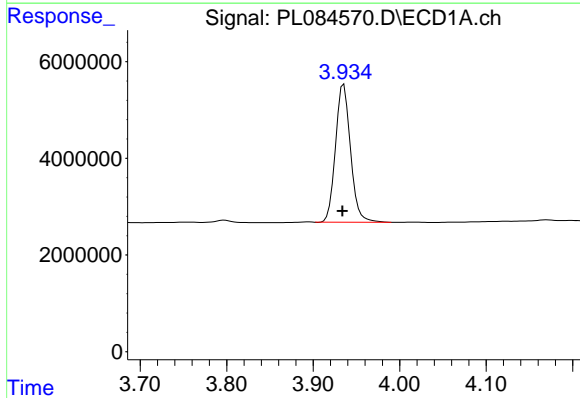
R.T.: 3.478 min  
 Delta R.T.: 0.002 min  
 Response: 48968503  
 Conc: 21.08 ng/ml

Instrument :  
 ECD\_L  
 ClientSampleId :  
 PEM



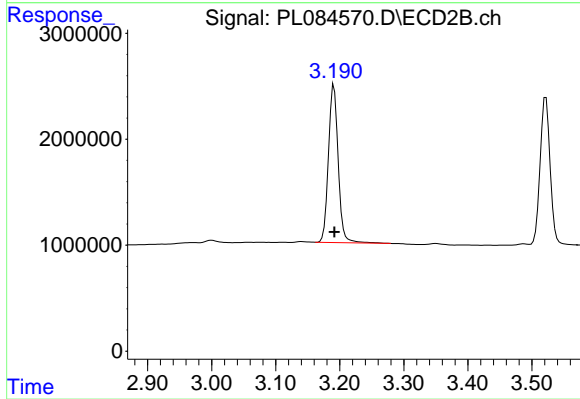
#1 Tetrachloro-m-xylene

R.T.: 2.686 min  
 Delta R.T.: 0.000 min  
 Response: 23049554  
 Conc: 21.20 ng/ml



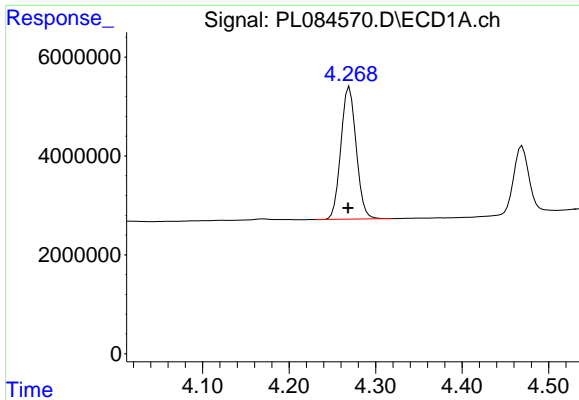
#2 alpha-BHC

R.T.: 3.935 min  
 Delta R.T.: 0.002 min  
 Response: 34226823  
 Conc: 10.37 ng/ml



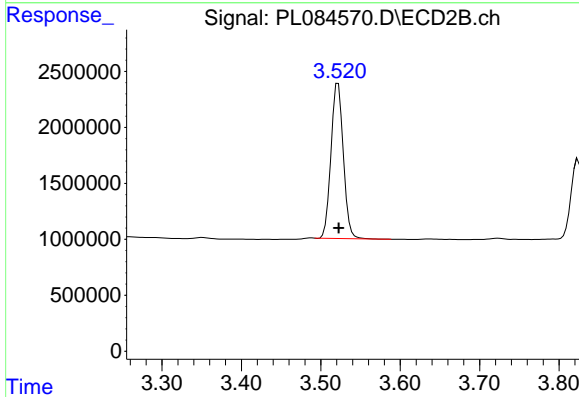
#2 alpha-BHC

R.T.: 3.191 min  
 Delta R.T.: 0.000 min  
 Response: 15759564  
 Conc: 10.21 ng/ml

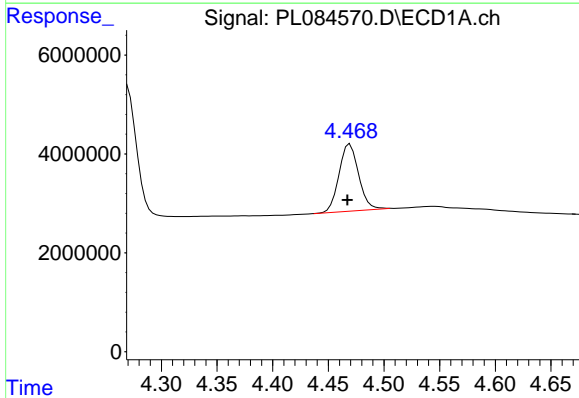


#3 gamma-BHC (Lindane)  
 R.T.: 4.270 min  
 Delta R.T.: 0.002 min  
 Response: 32752838  
 Conc: 10.27 ng/ml

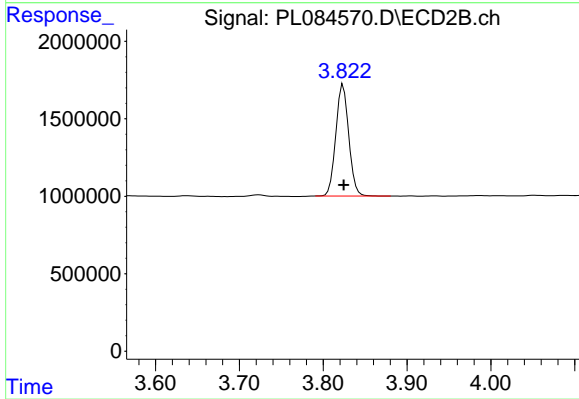
Instrument :  
 ECD\_L  
 ClientSampleId :  
 PEM



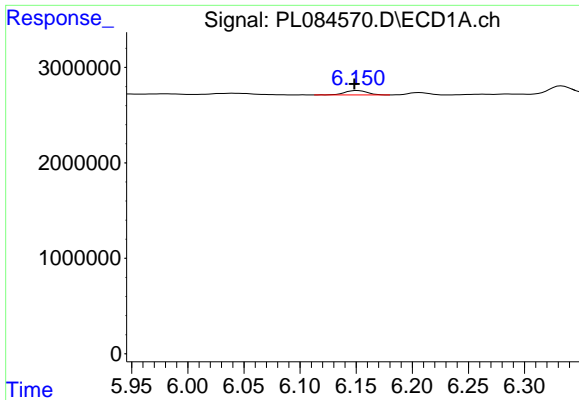
#3 gamma-BHC (Lindane)  
 R.T.: 3.522 min  
 Delta R.T.: 0.000 min  
 Response: 14902188  
 Conc: 9.81 ng/ml



#6 beta-BHC  
 R.T.: 4.470 min  
 Delta R.T.: 0.003 min  
 Response: 16782875  
 Conc: 12.01 ng/ml



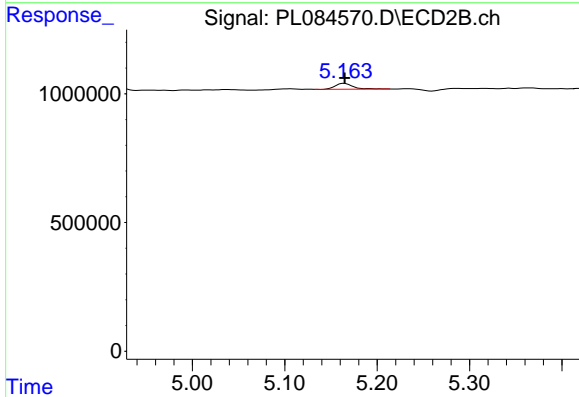
#6 beta-BHC  
 R.T.: 3.824 min  
 Delta R.T.: 0.000 min  
 Response: 7730252  
 Conc: 11.54 ng/ml



#12 4,4'-DDE

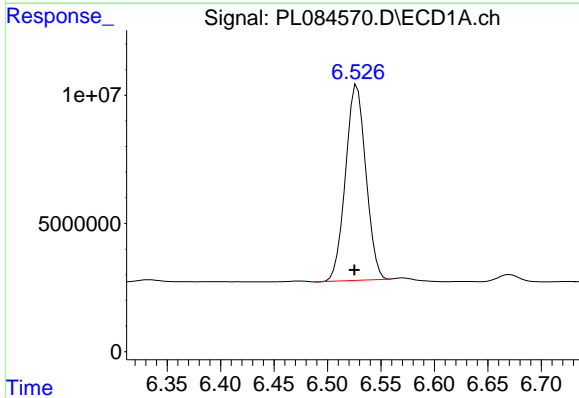
R.T.: 6.151 min  
 Delta R.T.: 0.003 min  
 Response: 651355  
 Conc: 0.28 ng/ml

Instrument :  
 ECD\_L  
 ClientSampleId :  
 PEM



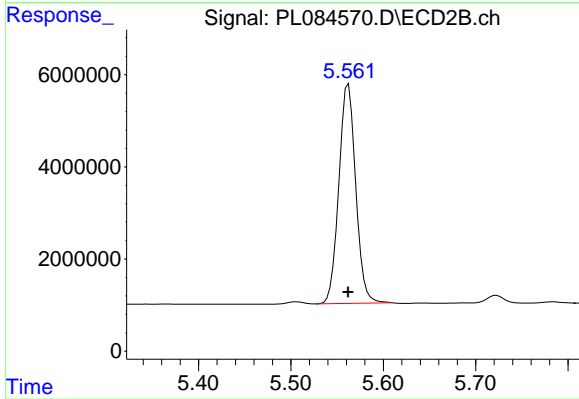
#12 4,4'-DDE

R.T.: 5.164 min  
 Delta R.T.: 0.000 min  
 Response: 302790  
 Conc: 0.25 ng/ml



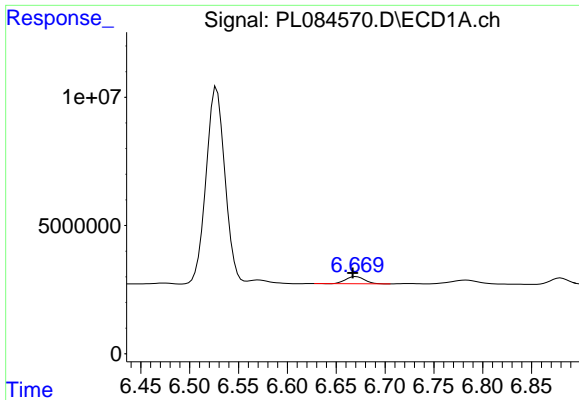
#14 Endrin

R.T.: 6.528 min  
 Delta R.T.: 0.003 min  
 Response: 100966938  
 Conc: 46.29 ng/ml



#14 Endrin

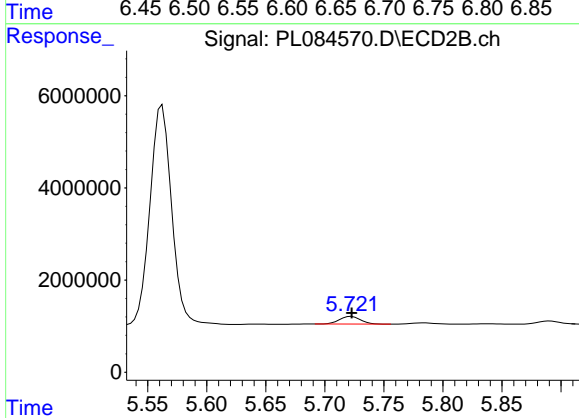
R.T.: 5.562 min  
 Delta R.T.: 0.000 min  
 Response: 60439498  
 Conc: 49.41 ng/ml



#16 4,4'-DDD

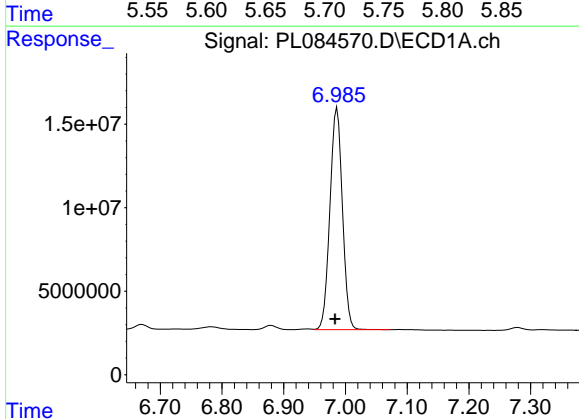
R.T.: 6.670 min  
 Delta R.T.: 0.003 min  
 Response: 3767741  
 Conc: 2.25 ng/ml

Instrument :  
 ECD\_L  
 ClientSampleId :  
 PEM



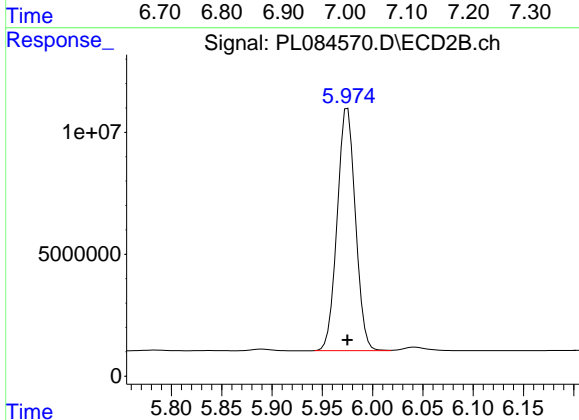
#16 4,4'-DDD

R.T.: 5.723 min  
 Delta R.T.: 0.000 min  
 Response: 2061938  
 Conc: 2.00 ng/ml



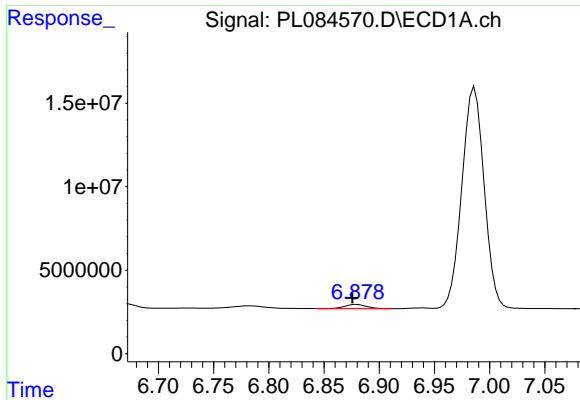
#17 4,4'-DDT

R.T.: 6.986 min  
 Delta R.T.: 0.003 min  
 Response: 186716234  
 Conc: 99.65 ng/ml



#17 4,4'-DDT

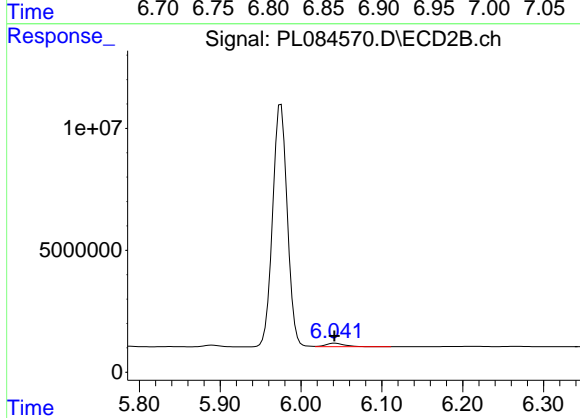
R.T.: 5.975 min  
 Delta R.T.: 0.000 min  
 Response: 125315940  
 Conc: 107.98 ng/ml



#18 Endrin aldehyde

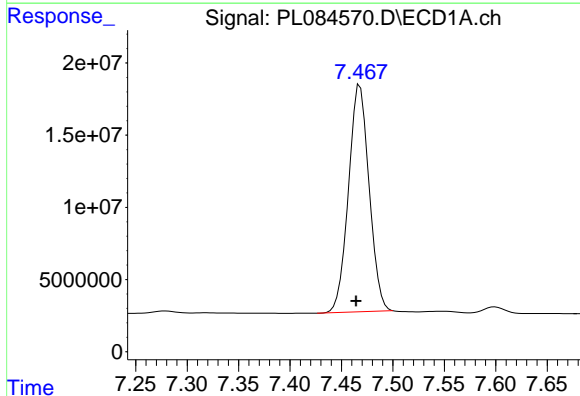
R.T.: 6.880 min  
 Delta R.T.: 0.004 min  
 Response: 3307056  
 Conc: 1.96 ng/ml

Instrument :  
 ECD\_L  
 ClientSampleId :  
 PEM



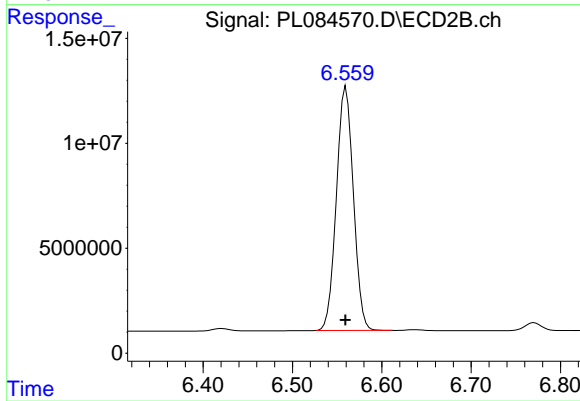
#18 Endrin aldehyde

R.T.: 6.042 min  
 Delta R.T.: 0.000 min  
 Response: 2332266  
 Conc: 2.35 ng/ml



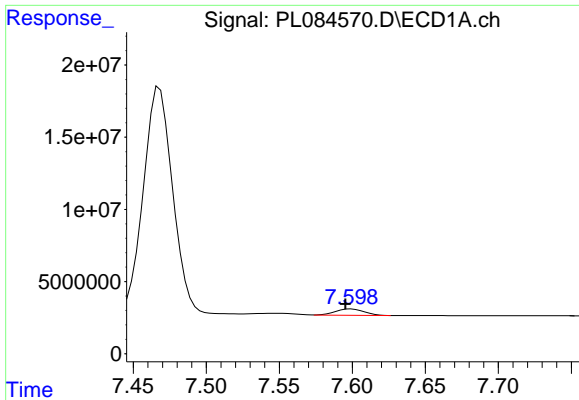
#20 Methoxychlor

R.T.: 7.468 min  
 Delta R.T.: 0.004 min  
 Response: 219344752  
 Conc: 228.56 ng/ml



#20 Methoxychlor

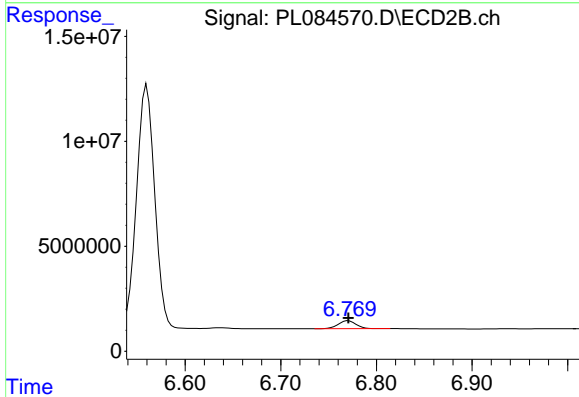
R.T.: 6.560 min  
 Delta R.T.: 0.000 min  
 Response: 153595245  
 Conc: 223.87 ng/ml



#21 Endrin ketone

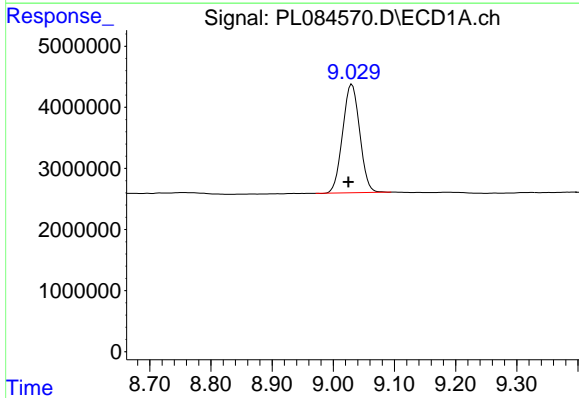
R.T.: 7.598 min  
 Delta R.T.: 0.002 min  
 Response: 6114474  
 Conc: 3.06 ng/ml

Instrument :  
 ECD\_L  
 ClientSampleId :  
 PEM



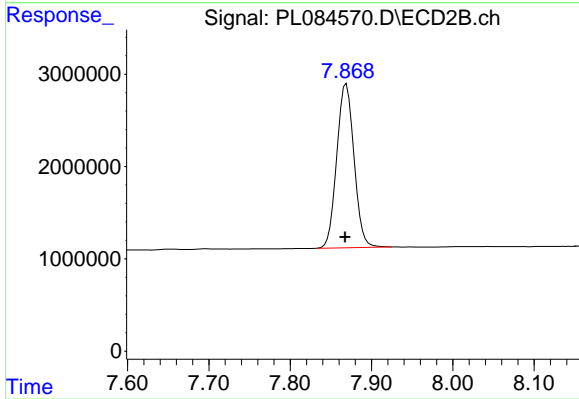
#21 Endrin ketone

R.T.: 6.771 min  
 Delta R.T.: 0.000 min  
 Response: 4878879  
 Conc: 3.38 ng/ml



#28 Decachlorobiphenyl

R.T.: 9.030 min  
 Delta R.T.: 0.006 min  
 Response: 34458402  
 Conc: 21.18 ng/ml



#28 Decachlorobiphenyl

R.T.: 7.869 min  
 Delta R.T.: 0.002 min  
 Response: 26210506  
 Conc: 21.02 ng/ml