

Data Path : Z:\pestpcbsrv\HPCHEM1\ECD_L\Data\PL080824\
 Data File : PL090878.D
 Signal(s) : Signal #1: ECD1A.ch Signal #2: ECD2B.ch
 Acq On : 08 Aug 2024 12:49
 Operator : AR\AJ
 Sample : PIBLK238
 Misc :
 ALS Vial : 19 Sample Multiplier: 1

Instrument :
 ECD_L
 ClientSampleId :
 PIBLK370

Integration File signal 1: autoint1.e
 Integration File signal 2: autoint2.e
 Quant Time: Aug 08 15:14:42 2024
 Quant Method : Z:\pestpcbsrv\HPCHEM1\ECD_L\methods\PL080824CLP.M
 Quant Title : GC Extractables
 QLast Update : Thu Aug 08 15:00:49 2024
 Response via : Initial Calibration
 Integrator: ChemStation

Volume Inj. : 1 µl
 Signal #1 Phase : ZB-MR2 Signal #2 Phase: ZB-MR1
 Signal #1 Info : 30M x 0.32mm x0.2 Signal #2 Info : 30M x 0.32mm x 0.50µm

Compound	RT#1	RT#2	Resp#1	Resp#2	ng/ml	ng/ml

System Monitoring Compounds						
1) SA Tetrachlo...	3.543	2.786	47295935	41266053	23.357	23.514
27) SA Decachlor...	9.053	7.925	37961953	40448000	24.384	23.568

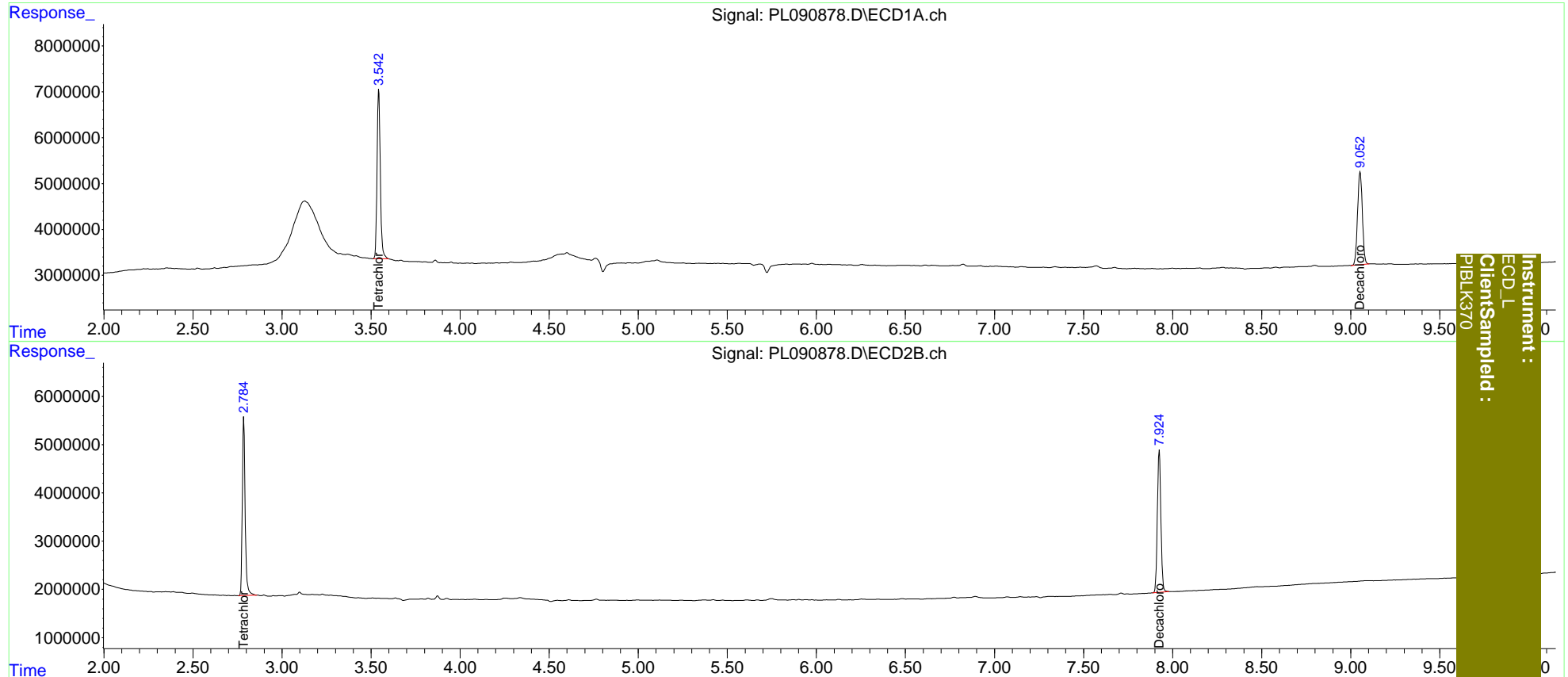
Target Compounds

 (f)=RT Delta > 1/2 Window (#)=Amounts differ by > 25% (m)=manual int.

Data Path : Z:\pestpcbsrv\HPCHEM1\ECD_L\Data\PL080824\
 Data File : PL090878.D
 Signal(s) : Signal #1: ECD1A.ch Signal #2: ECD2B.ch
 Acq On : 08 Aug 2024 12:49
 Operator : AR\AJ
 Sample : PIBLK238
 Misc :
 ALS Vial : 19 Sample Multiplier: 1

Integration File signal 1: autoint1.e
 Integration File signal 2: autoint2.e
 Quant Time: Aug 08 15:14:42 2024
 Quant Method : Z:\pestpcbsrv\HPCHEM1\ECD_L\methods\PL080824CLP.M
 Quant Title : GC Extractables
 QLast Update : Thu Aug 08 15:00:49 2024
 Response via : Initial Calibration
 Integrator: ChemStation

Volume Inj. : 1 µl
 Signal #1 Phase : ZB-MR2 Signal #2 Phase: ZB-MR1
 Signal #1 Info : 30M x 0.32mm x 0.2 Signal #2 Info : 30M x 0.32mm x 0.50µm



Instrument :
 ECD_L
 ClientSampled :
 PIBLK370