

Data Path : Z:\pestpcbsrv\HPCHEM1\ECD\_L\Data\PL081022\  
 Data File : PL077021.D  
 Signal(s) : Signal #1: ECD1A.ch Signal #2: ECD2B.ch  
 Acq On : 10 Aug 2022 16:07  
 Operator : AR\AJ  
 Sample : I.BLK  
 Misc :  
 ALS Vial : 2 Sample Multiplier: 1

Instrument :  
 ECD\_L  
 ClientSampleId :

Integration File signal 1: autoint1.e  
 Integration File signal 2: autoint2.e  
 Quant Time: Aug 10 16:26:30 2022  
 Quant Method : Z:\pestpcbsrv\HPCHEM1\ECD\_L\methods\PL080822.M  
 Quant Title : GC Extractables  
 QLast Update : Tue Aug 09 09:13:15 2022  
 Response via : Initial Calibration  
 Integrator: ChemStation

Volume Inj. : 1 µl  
 Signal #1 Phase : ZB-MR2 Signal #2 Phase: ZB-MR1  
 Signal #1 Info : 30M x 0.32mm x0.2 Signal #2 Info : 30M x 0.32mm x0.5µm

Compound	RT#1	RT#2	Resp#1	Resp#2	ng/ml	ng/ml
-----						
System Monitoring Compounds						
1) SA Tetrachlo...	3.420	2.638	16215959	44783439	16.538	15.644
28) SA Decachlor...	8.914	7.745	14168238	35157633	18.767	15.617

Target Compounds

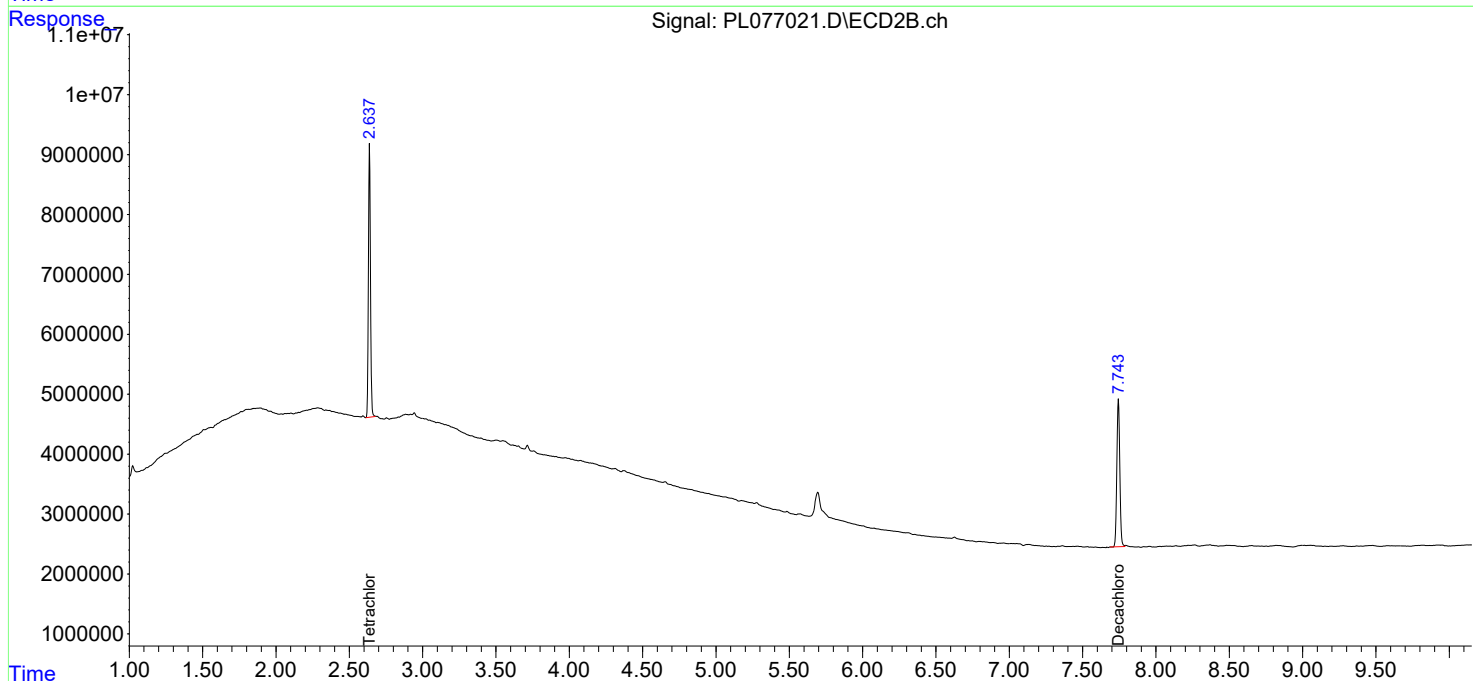
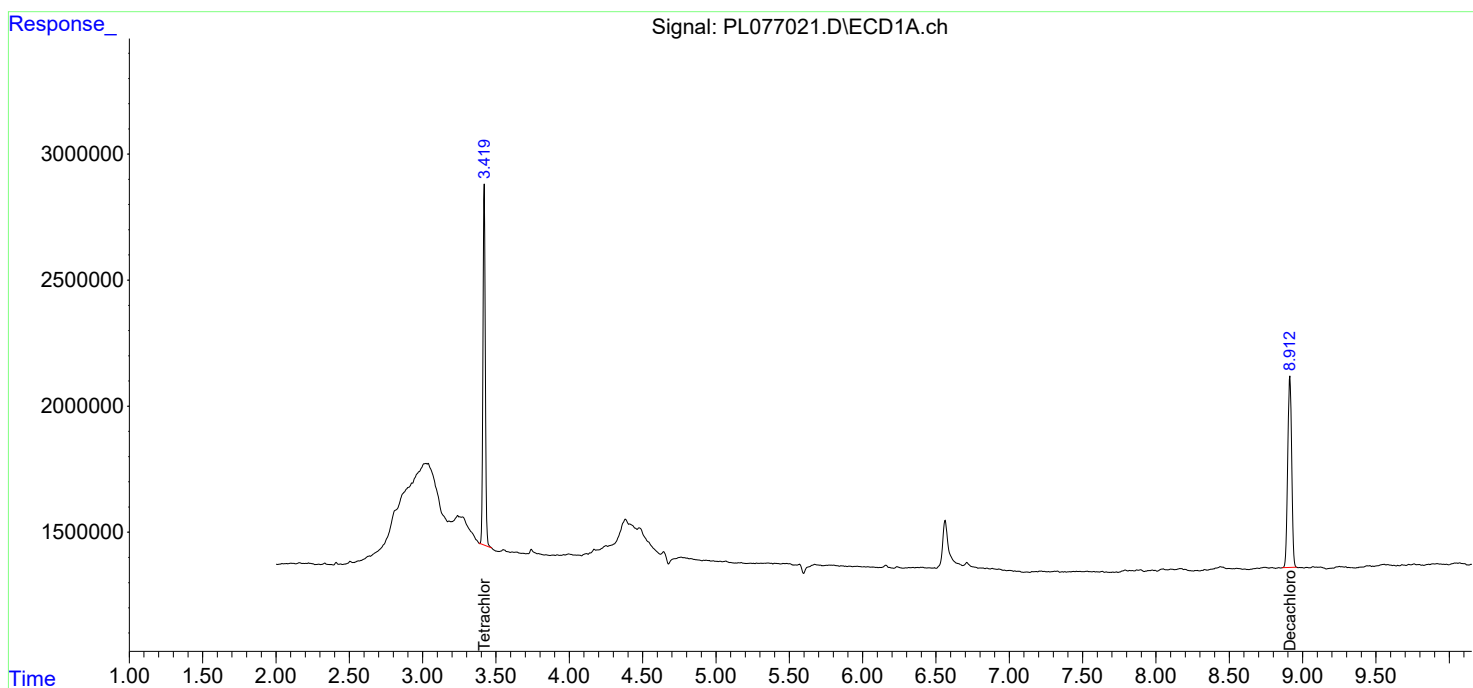
(f)=RT Delta > 1/2 Window (#)=Amounts differ by > 25% (m)=manual int.

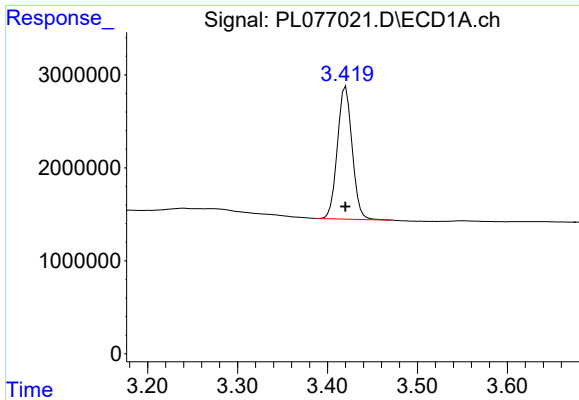
Data Path : Z:\pestpcbsrv\HPCHEM1\ECD\_L\Data\PL081022\  
 Data File : PL077021.D  
 Signal(s) : Signal #1: ECD1A.ch Signal #2: ECD2B.ch  
 Acq On : 10 Aug 2022 16:07  
 Operator : AR\AJ  
 Sample : I.BLK  
 Misc :  
 ALS Vial : 2 Sample Multiplier: 1

Instrument :  
 ECD\_L  
 ClientSampleId :

Integration File signal 1: autoint1.e  
 Integration File signal 2: autoint2.e  
 Quant Time: Aug 10 16:26:30 2022  
 Quant Method : Z:\pestpcbsrv\HPCHEM1\ECD\_L\methods\PL080822.M  
 Quant Title : GC Extractables  
 QLast Update : Tue Aug 09 09:13:15 2022  
 Response via : Initial Calibration  
 Integrator: ChemStation

Volume Inj. : 1 µl  
 Signal #1 Phase : ZB-MR2 Signal #2 Phase: ZB-MR1  
 Signal #1 Info : 30M x 0.32mm x0.2 Signal #2 Info : 30M x 0.32mm x0.5µm

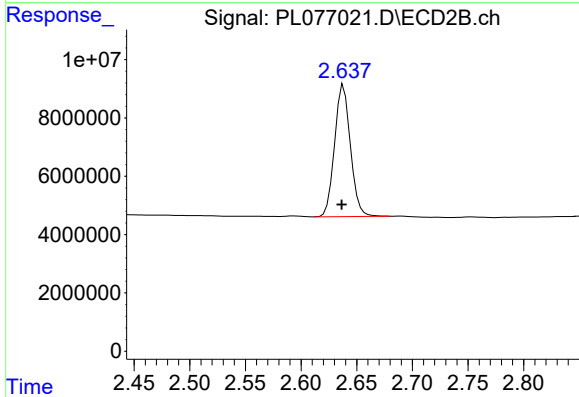




#1 Tetrachloro-m-xylene

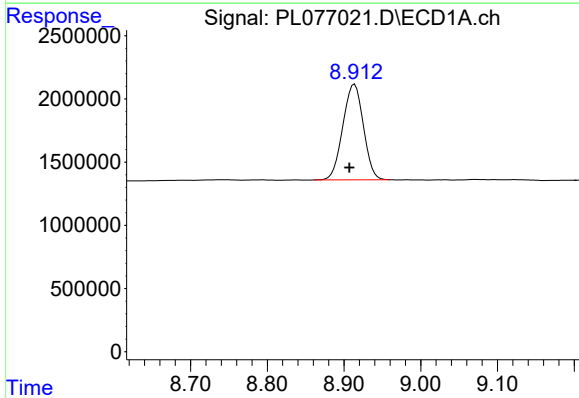
R.T.: 3.420 min  
 Delta R.T.: 0.000 min  
 Response: 16215959  
 Conc: 16.54 ng/ml

Instrument :  
 ECD\_L  
 ClientSampleId :



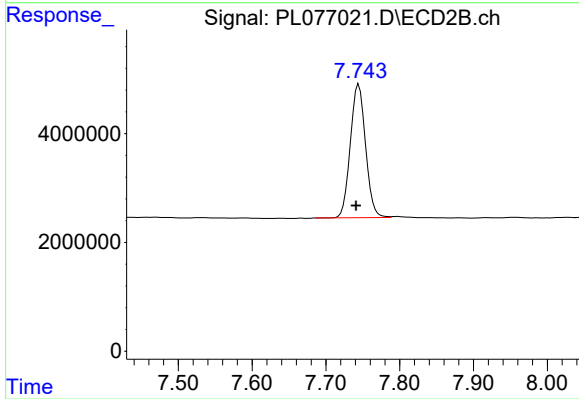
#1 Tetrachloro-m-xylene

R.T.: 2.638 min  
 Delta R.T.: 0.002 min  
 Response: 44783439  
 Conc: 15.64 ng/ml



#28 Decachlorobiphenyl

R.T.: 8.914 min  
 Delta R.T.: 0.007 min  
 Response: 14168238  
 Conc: 18.77 ng/ml



#28 Decachlorobiphenyl

R.T.: 7.745 min  
 Delta R.T.: 0.004 min  
 Response: 35157633  
 Conc: 15.62 ng/ml