

Data Path : Z:\pestpcbsrv\HPCHEM1\ECD\_L\Data\PL081023\  
 Data File : PL084654.D  
 Signal(s) : Signal #1: ECD1A.ch Signal #2: ECD2B.ch  
 Acq On : 10 Aug 2023 14:33  
 Operator : AR\AJ  
 Sample : PSTDCCC050  
 Misc :  
 ALS Vial : 4 Sample Multiplier: 1

Instrument :  
 ECD\_L  
 ClientSampleId :

Integration File signal 1: autoint1.e  
 Integration File signal 2: autoint2.e  
 Quant Time: Aug 10 21:35:07 2023  
 Quant Method : Z:\pestpcbsrv\HPCHEM1\ECD\_L\methods\PL080323.M  
 Quant Title : GC Extractables  
 QLast Update : Thu Aug 03 16:21:43 2023  
 Response via : Initial Calibration  
 Integrator: ChemStation

Volume Inj. : 1 µl  
 Signal #1 Phase : ZB-MR2 Signal #2 Phase: ZB-MR1  
 Signal #1 Info : 30M x 0.32mm x0.2 Signal #2 Info : 30M x 0.32mm x0.5µm

	Compound	RT#1	RT#2	Resp#1	Resp#2	ng/ml	ng/ml
-----							
System Monitoring Compounds							
1)	SA Tetrachlo...	3.478	2.686	117.9E6	58124486	50.752	53.452
28)	SA Decachlor...	9.028	7.868	83229966	67048954	51.153	53.777
Target Compounds							
2)	A alpha-BHC	3.935	3.191	170.3E6	86300790	51.585	55.892
3)	MA gamma-BHC...	4.270	3.522	164.9E6	84072596	51.699	55.328
4)	MA Heptachlor	4.862	3.863	171.2E6	77670106	50.905	54.538
5)	MB Aldrin	5.205	4.143	168.3E6	81224611	50.920	55.886
6)	B beta-BHC	4.469	3.824	73122140	36285142	52.345	54.155
7)	B delta-BHC	4.716	4.052	170.0E6	85231132	52.711	56.139
8)	B Heptachlo...	5.634	4.649	150.7E6	72969077	50.019	54.996
9)	A Endosulfan I	6.021	5.020	130.7E6	67961441	49.645	54.839
10)	B gamma-Chl...	5.892	4.902	142.7E6	74864932	49.848	55.200
11)	B alpha-Chl...	5.972	4.967	140.4E6	74865127	49.724	54.947
12)	B 4,4'-DDE	6.150	5.164	118.9E6	69897481	51.785	56.760
13)	MA Dieldrin	6.297	5.287	132.5E6	75775632	50.145	55.808
14)	MA Endrin	6.527	5.562	103.2E6	64529833	47.300	52.755
15)	B Endosulfa...	6.748	5.860	106.0E6	66302799	50.130	54.951
16)	A 4,4'-DDD	6.669	5.722	91493489	61136300	54.571	59.170
17)	MA 4,4'-DDT	6.985	5.974	88916639	59927304	47.455	51.637
18)	B Endrin al...	6.879	6.041	84765167	54174643	50.248	54.625
19)	B Endosulfa...	7.114	6.266	99551174	64980978	49.833	54.643
20)	A Methoxychlor	7.467	6.559	44511979	33146700	46.382	48.312
21)	B Endrin ke...	7.599	6.770	104.1E6	81850951	52.022	56.730
22)	Mirex	8.074	6.951	80708407	60972673	48.595	52.869
23)	Chlordane-1	0.000	3.695	0	121251	N.D.	3.163 #
24)	Chlordane-2	5.205f	4.257	168.3E6	61838	1474.207	1.235 #
25)	Chlordane-3	5.892	4.902	142.7E6	74864932	353.914	540.434 #
26)	Chlordane-4	5.972	4.967	140.4E6	74865127	289.810	521.611 #
27)	Chlordane-5	0.000	5.860	0	66302799	N.D.	1301.817 #

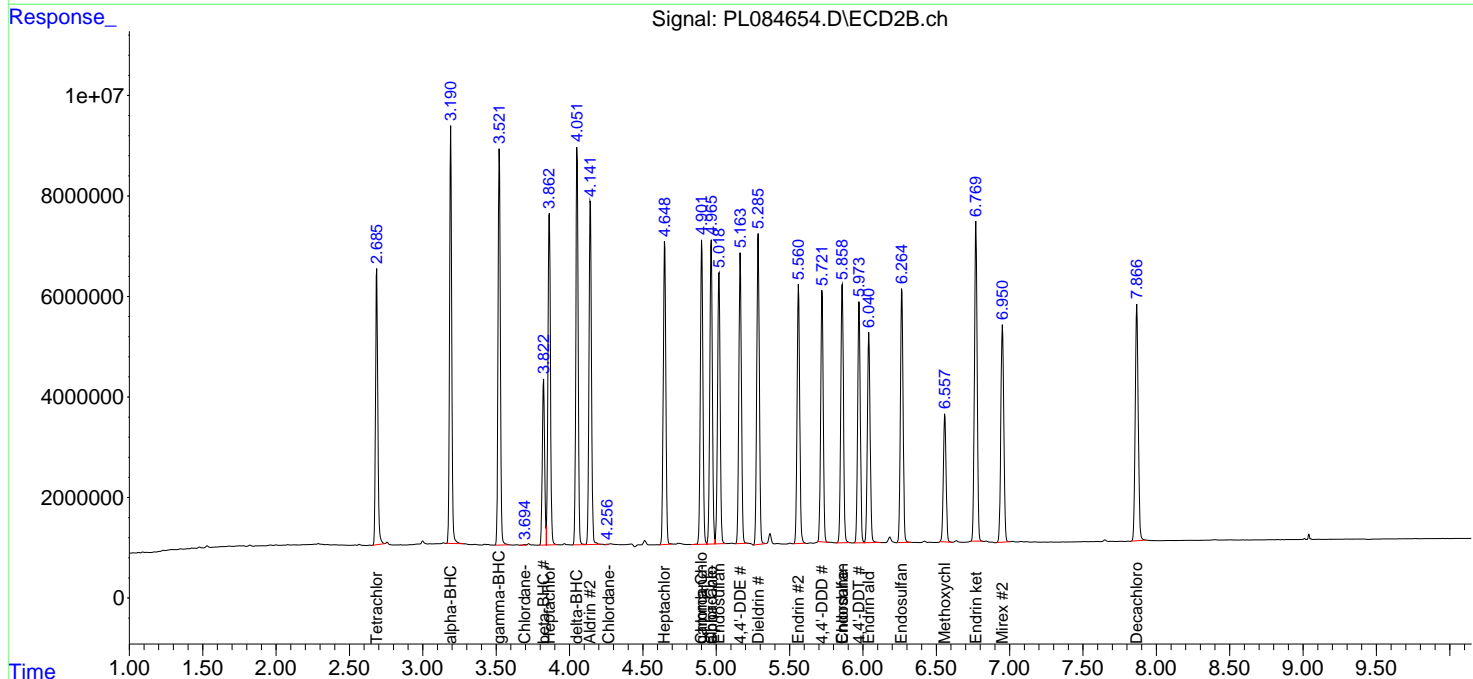
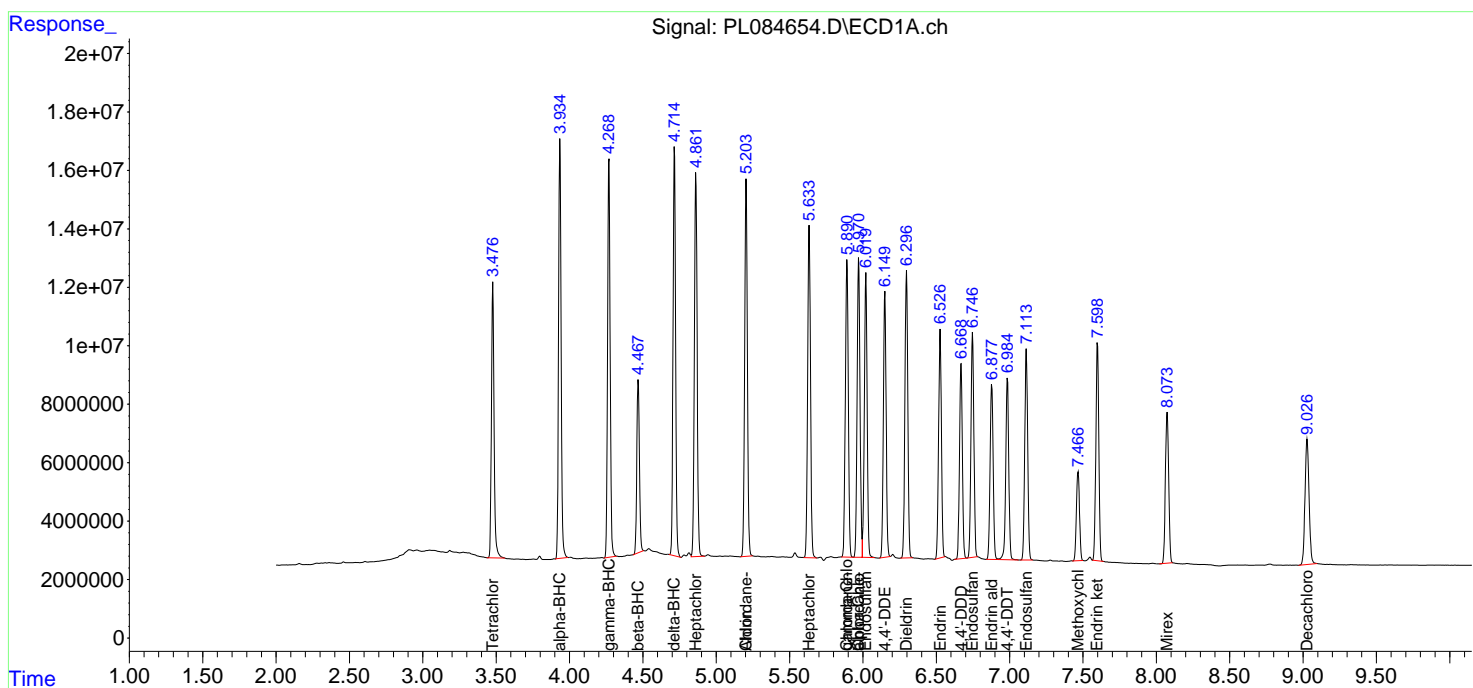
(f)=RT Delta > 1/2 Window (#)=Amounts differ by > 25% (m)=manual int.

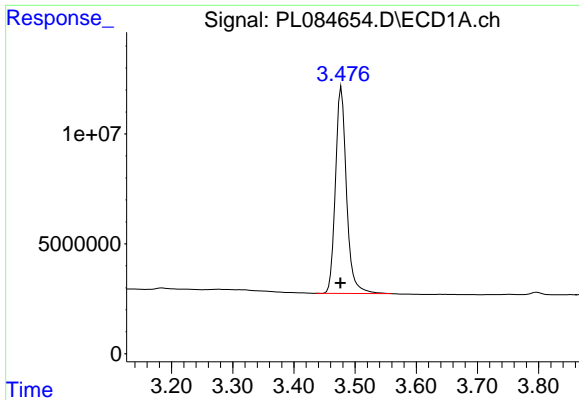
Data Path : Z:\pestpcbsrv\HPCHEM1\ECD\_L\Data\PL081023\  
 Data File : PL084654.D  
 Signal(s) : Signal #1: ECD1A.ch Signal #2: ECD2B.ch  
 Acq On : 10 Aug 2023 14:33  
 Operator : AR\AJ  
 Sample : PSTDCCC050  
 Misc :  
 ALS Vial : 4 Sample Multiplier: 1

Instrument :  
 ECD\_L  
 ClientSampleId :

Integration File signal 1: autoint1.e  
 Integration File signal 2: autoint2.e  
 Quant Time: Aug 10 21:35:07 2023  
 Quant Method : Z:\pestpcbsrv\HPCHEM1\ECD\_L\methods\PL080323.M  
 Quant Title : GC Extractables  
 QLast Update : Thu Aug 03 16:21:43 2023  
 Response via : Initial Calibration  
 Integrator: ChemStation

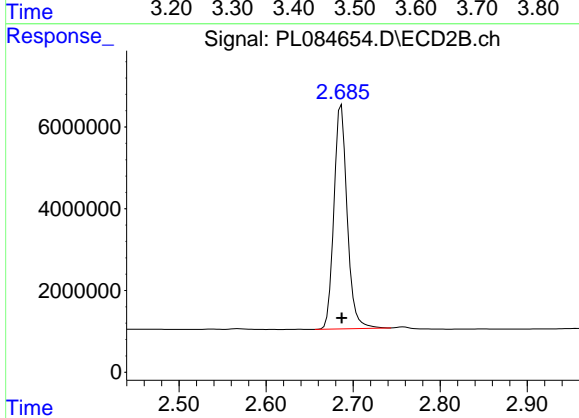
Volume Inj. : 1 µl  
 Signal #1 Phase : ZB-MR2 Signal #2 Phase: ZB-MR1  
 Signal #1 Info : 30M x 0.32mm x0.2 Signal #2 Info : 30M x 0.32mm x0.5µm



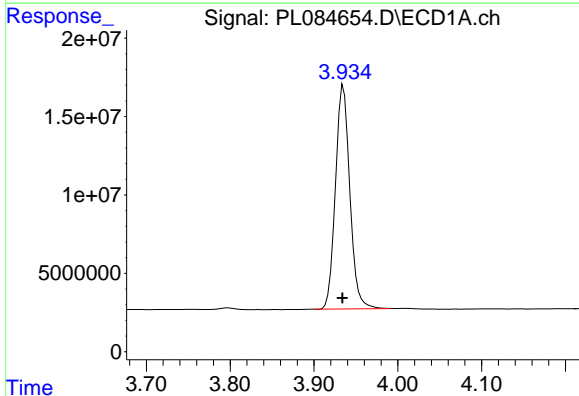


#1 Tetrachloro-m-xylene  
 R.T.: 3.478 min  
 Delta R.T.: 0.002 min  
 Response: 117920883  
 Conc: 50.75 ng/ml

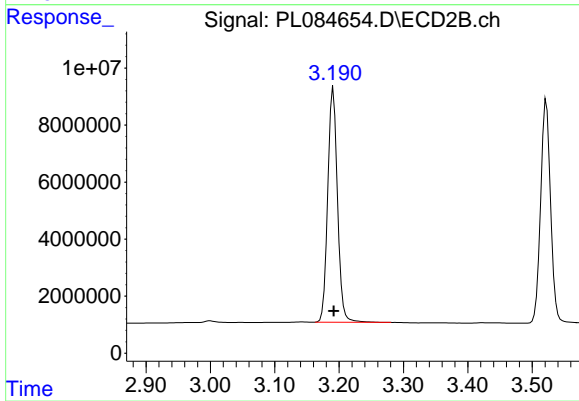
Instrument :  
 ECD\_L  
 ClientSampleId :



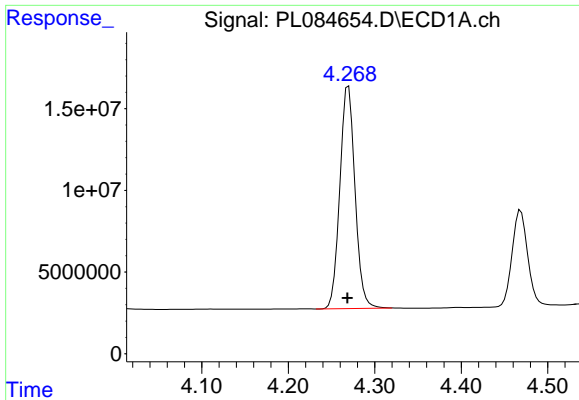
#1 Tetrachloro-m-xylene  
 R.T.: 2.686 min  
 Delta R.T.: 0.000 min  
 Response: 58124486  
 Conc: 53.45 ng/ml



#2 alpha-BHC  
 R.T.: 3.935 min  
 Delta R.T.: 0.001 min  
 Response: 170303835  
 Conc: 51.59 ng/ml



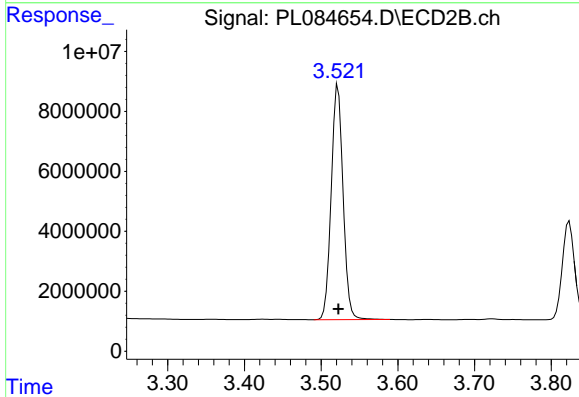
#2 alpha-BHC  
 R.T.: 3.191 min  
 Delta R.T.: 0.000 min  
 Response: 86300790  
 Conc: 55.89 ng/ml



#3 gamma-BHC (Lindane)

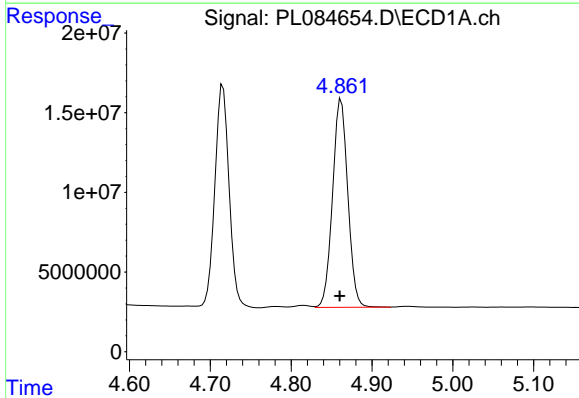
R.T.: 4.270 min  
 Delta R.T.: 0.001 min  
 Response: 164921424  
 Conc: 51.70 ng/ml

Instrument :  
 ECD\_L  
 ClientSampleId :



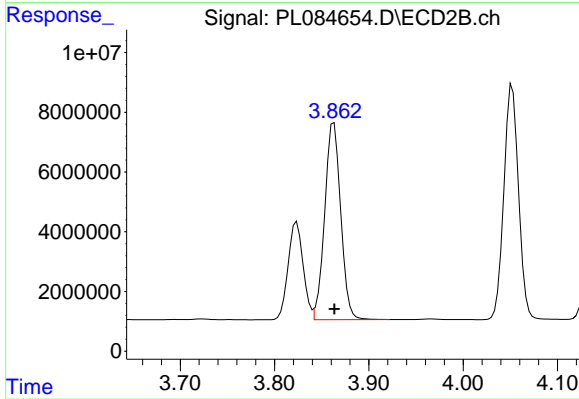
#3 gamma-BHC (Lindane)

R.T.: 3.522 min  
 Delta R.T.: 0.000 min  
 Response: 84072596  
 Conc: 55.33 ng/ml



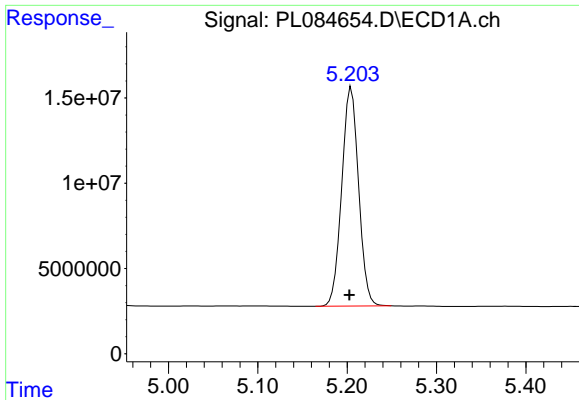
#4 Heptachlor

R.T.: 4.862 min  
 Delta R.T.: 0.002 min  
 Response: 171187581  
 Conc: 50.91 ng/ml



#4 Heptachlor

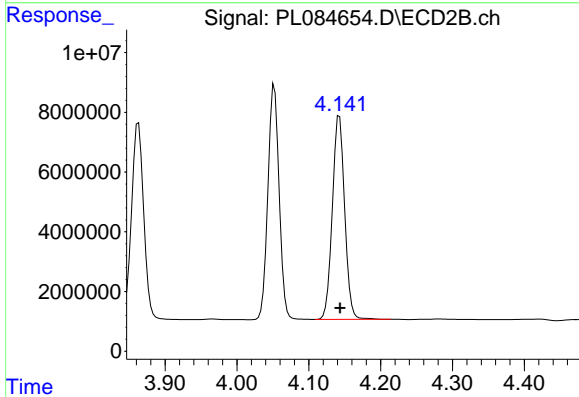
R.T.: 3.863 min  
 Delta R.T.: 0.000 min  
 Response: 77670106  
 Conc: 54.54 ng/ml



#5 Aldrin

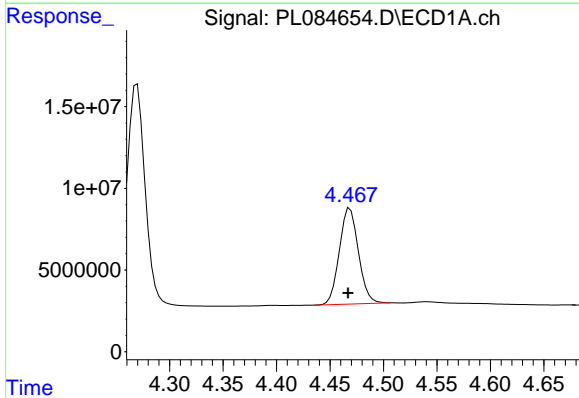
R.T.: 5.205 min  
 Delta R.T.: 0.002 min  
 Response: 168307363  
 Conc: 50.92 ng/ml

Instrument :  
 ECD\_L  
 ClientSampleId :



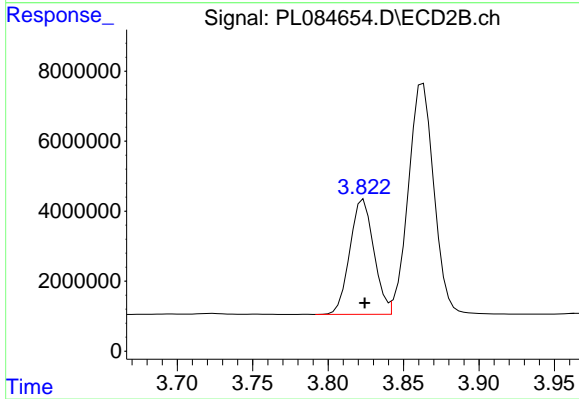
#5 Aldrin

R.T.: 4.143 min  
 Delta R.T.: 0.000 min  
 Response: 81224611  
 Conc: 55.89 ng/ml



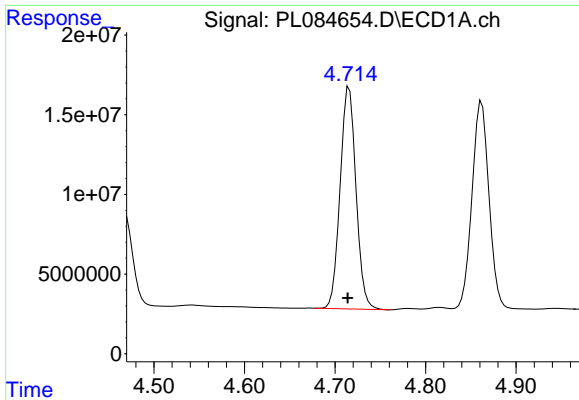
#6 beta-BHC

R.T.: 4.469 min  
 Delta R.T.: 0.002 min  
 Response: 73122140  
 Conc: 52.35 ng/ml



#6 beta-BHC

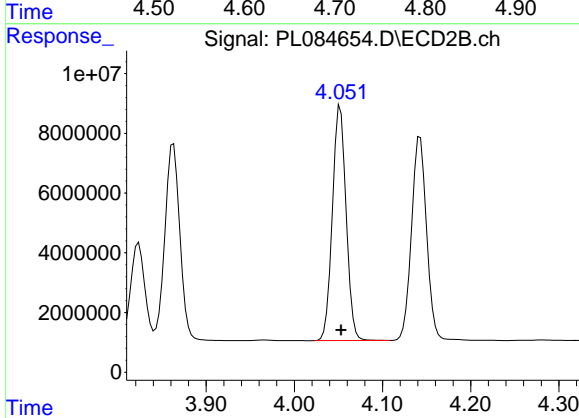
R.T.: 3.824 min  
 Delta R.T.: 0.000 min  
 Response: 36285142  
 Conc: 54.16 ng/ml



#7 delta-BHC

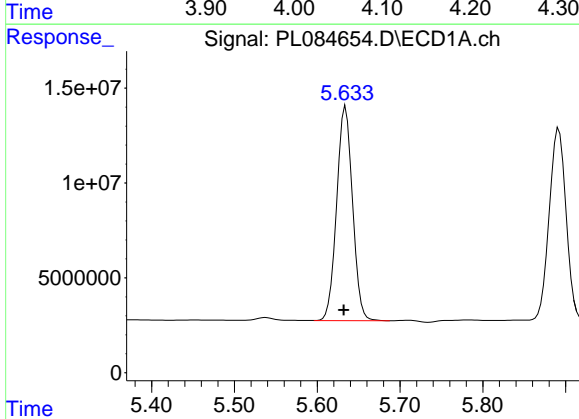
R.T.: 4.716 min  
Delta R.T.: 0.002 min  
Response: 169976509  
Conc: 52.71 ng/ml

Instrument :  
ECD\_L  
ClientSampleId :



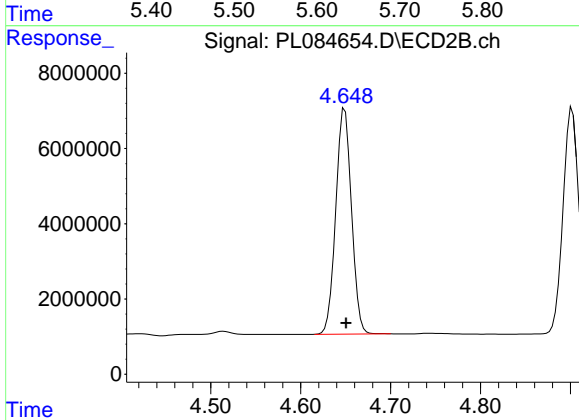
#7 delta-BHC

R.T.: 4.052 min  
Delta R.T.: 0.000 min  
Response: 85231132  
Conc: 56.14 ng/ml



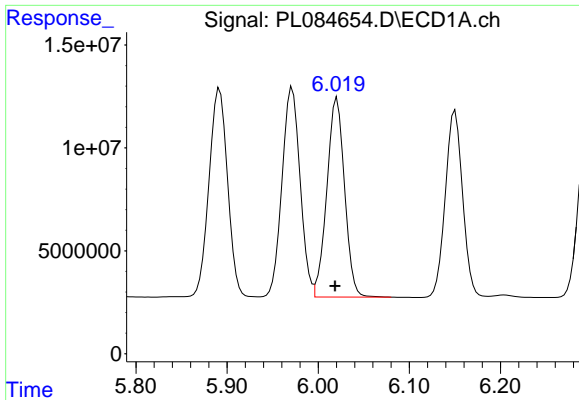
#8 Heptachlor epoxide

R.T.: 5.634 min  
Delta R.T.: 0.002 min  
Response: 150692478  
Conc: 50.02 ng/ml



#8 Heptachlor epoxide

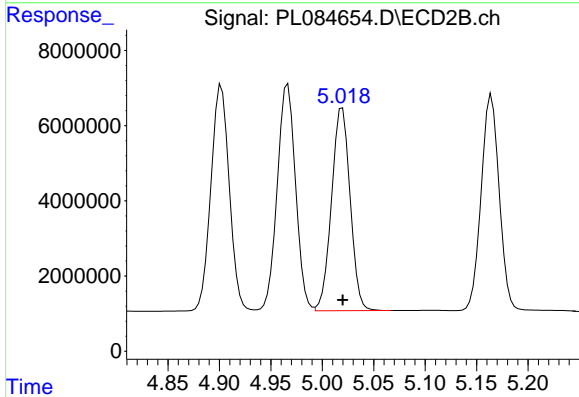
R.T.: 4.649 min  
Delta R.T.: -0.001 min  
Response: 72969077  
Conc: 55.00 ng/ml



#9 Endosulfan I

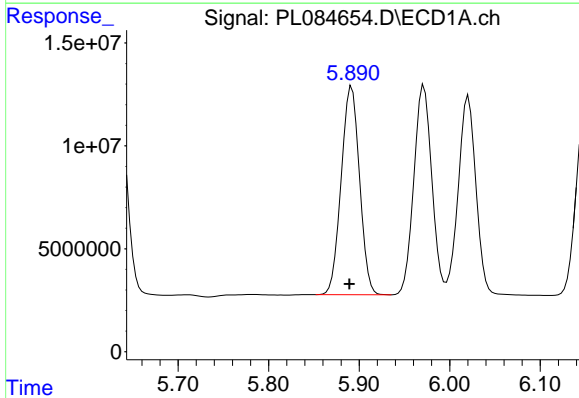
R.T.: 6.021 min  
 Delta R.T.: 0.002 min  
 Response: 130678400  
 Conc: 49.64 ng/ml

Instrument :  
 ECD\_L  
 ClientSampleId :



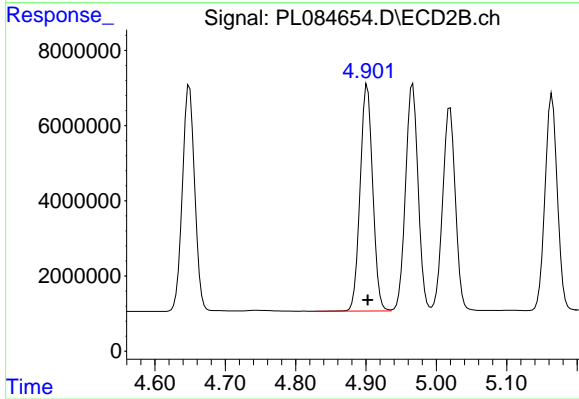
#9 Endosulfan I

R.T.: 5.020 min  
 Delta R.T.: 0.000 min  
 Response: 67961441  
 Conc: 54.84 ng/ml



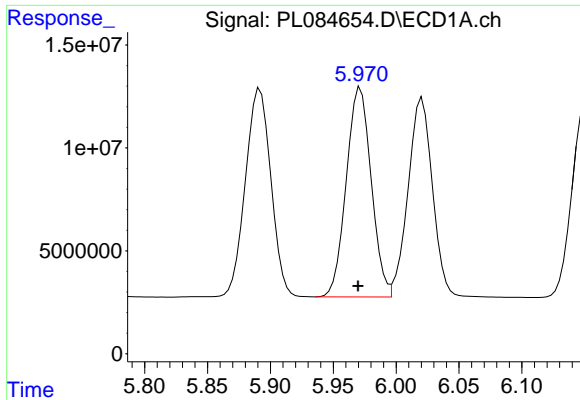
#10 gamma-Chlordane

R.T.: 5.892 min  
 Delta R.T.: 0.003 min  
 Response: 142747367  
 Conc: 49.85 ng/ml



#10 gamma-Chlordane

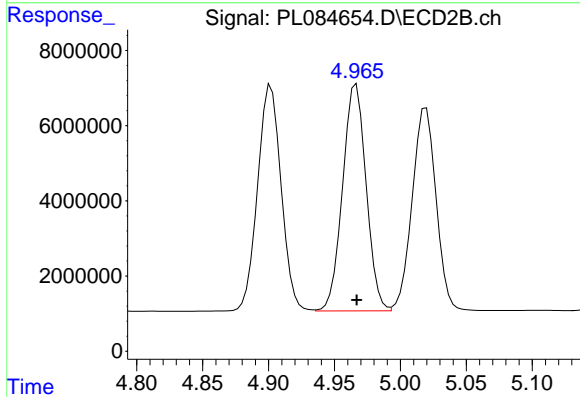
R.T.: 4.902 min  
 Delta R.T.: 0.000 min  
 Response: 74864932  
 Conc: 55.20 ng/ml



#11 alpha-Chlordane

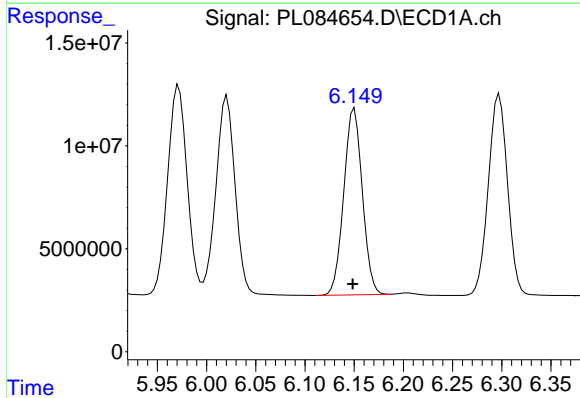
R.T.: 5.972 min  
 Delta R.T.: 0.002 min  
 Response: 140379455  
 Conc: 49.72 ng/ml

Instrument :  
 ECD\_L  
 ClientSampleId :



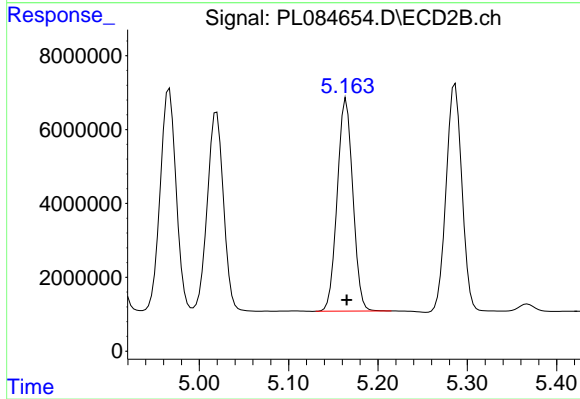
#11 alpha-Chlordane

R.T.: 4.967 min  
 Delta R.T.: 0.000 min  
 Response: 74865127  
 Conc: 54.95 ng/ml



#12 4,4'-DDE

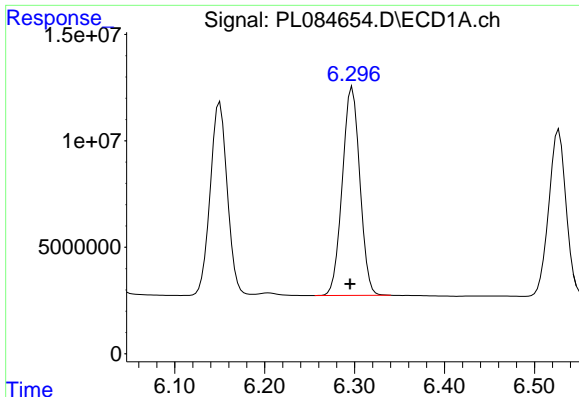
R.T.: 6.150 min  
 Delta R.T.: 0.002 min  
 Response: 118861339  
 Conc: 51.79 ng/ml



#12 4,4'-DDE

R.T.: 5.164 min  
 Delta R.T.: 0.000 min  
 Response: 69897481  
 Conc: 56.76 ng/ml

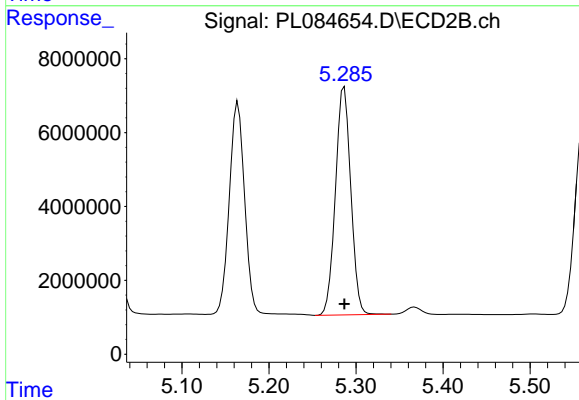




#13 Dieldrin

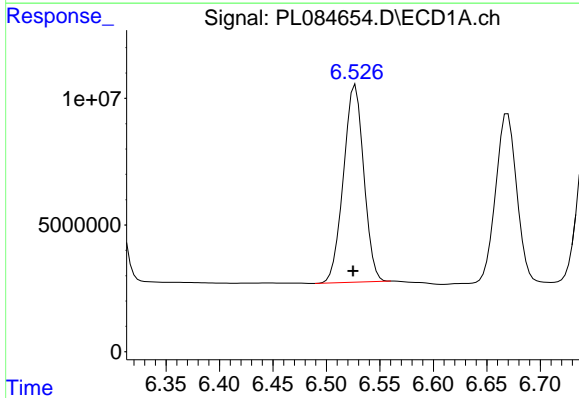
R.T.: 6.297 min  
 Delta R.T.: 0.003 min  
 Response: 132513130  
 Conc: 50.14 ng/ml

Instrument :  
 ECD\_L  
 ClientSampleId :



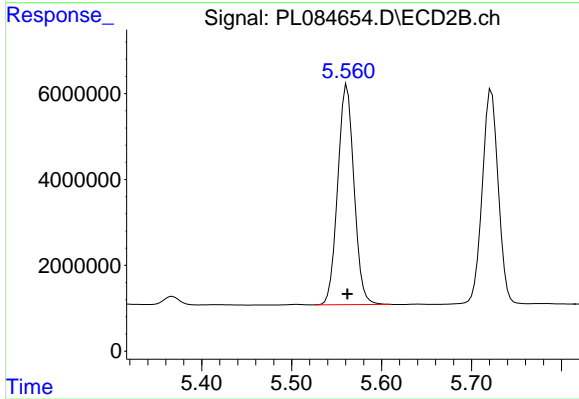
#13 Dieldrin

R.T.: 5.287 min  
 Delta R.T.: 0.000 min  
 Response: 75775632  
 Conc: 55.81 ng/ml



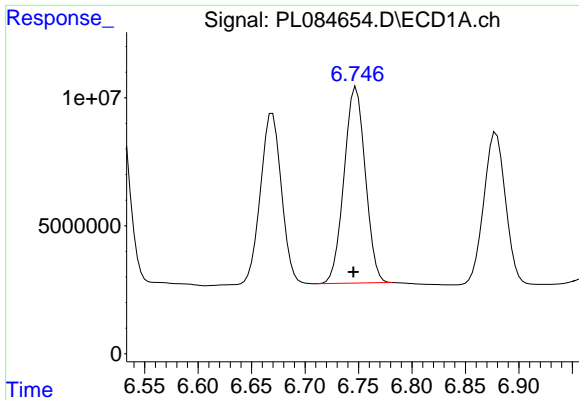
#14 Endrin

R.T.: 6.527 min  
 Delta R.T.: 0.002 min  
 Response: 103159796  
 Conc: 47.30 ng/ml



#14 Endrin

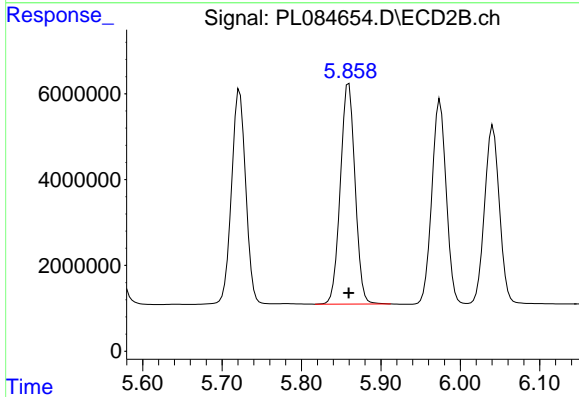
R.T.: 5.562 min  
 Delta R.T.: 0.000 min  
 Response: 64529833  
 Conc: 52.75 ng/ml



#15 Endosulfan II

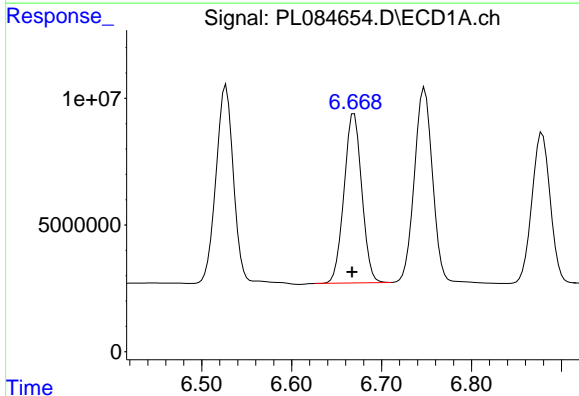
R.T.: 6.748 min  
 Delta R.T.: 0.003 min  
 Response: 106024496  
 Conc: 50.13 ng/ml

Instrument :  
 ECD\_L  
 ClientSampleId :



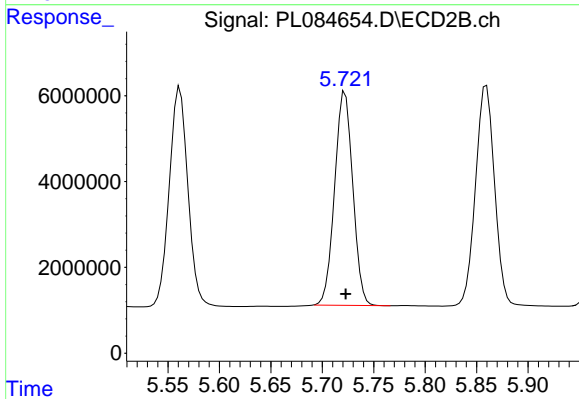
#15 Endosulfan II

R.T.: 5.860 min  
 Delta R.T.: 0.000 min  
 Response: 66302799  
 Conc: 54.95 ng/ml



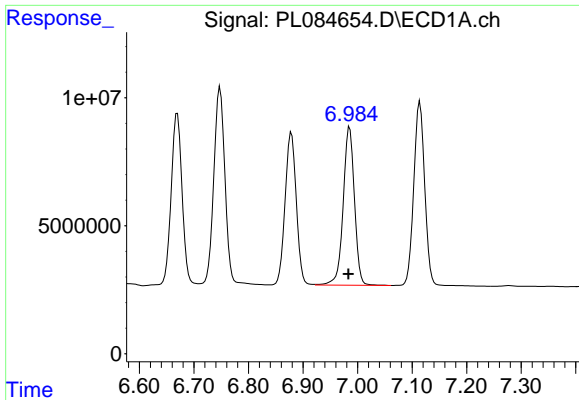
#16 4,4'-DDD

R.T.: 6.669 min  
 Delta R.T.: 0.002 min  
 Response: 91493489  
 Conc: 54.57 ng/ml



#16 4,4'-DDD

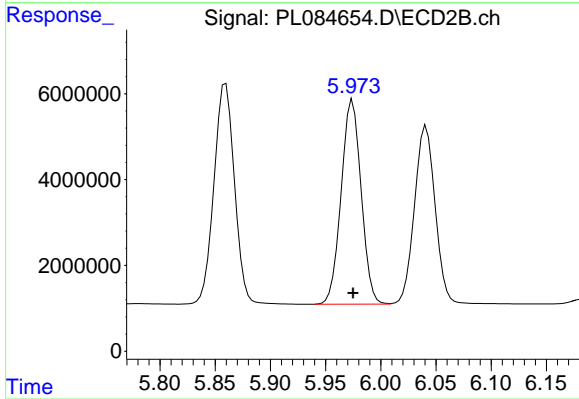
R.T.: 5.722 min  
 Delta R.T.: 0.000 min  
 Response: 61136300  
 Conc: 59.17 ng/ml



#17 4,4'-DDT

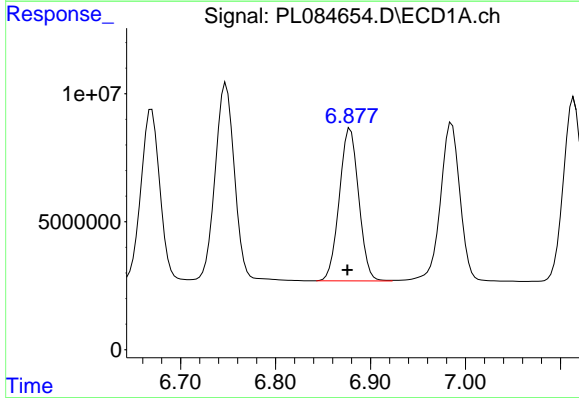
R.T.: 6.985 min  
 Delta R.T.: 0.002 min  
 Response: 88916639  
 Conc: 47.45 ng/ml

Instrument :  
 ECD\_L  
 ClientSampleId :



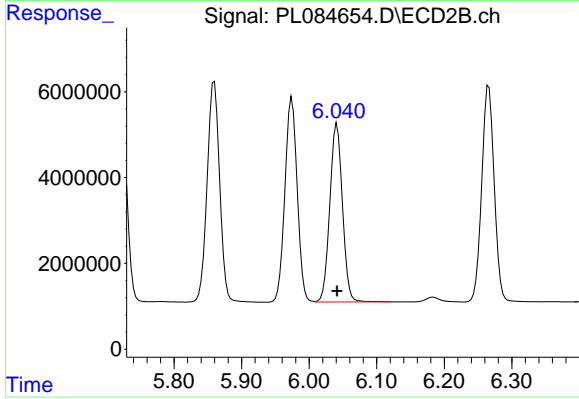
#17 4,4'-DDT

R.T.: 5.974 min  
 Delta R.T.: 0.000 min  
 Response: 59927304  
 Conc: 51.64 ng/ml



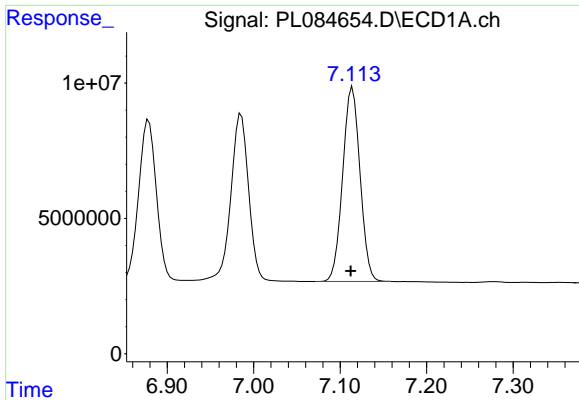
#18 Endrin aldehyde

R.T.: 6.879 min  
 Delta R.T.: 0.003 min  
 Response: 84765167  
 Conc: 50.25 ng/ml



#18 Endrin aldehyde

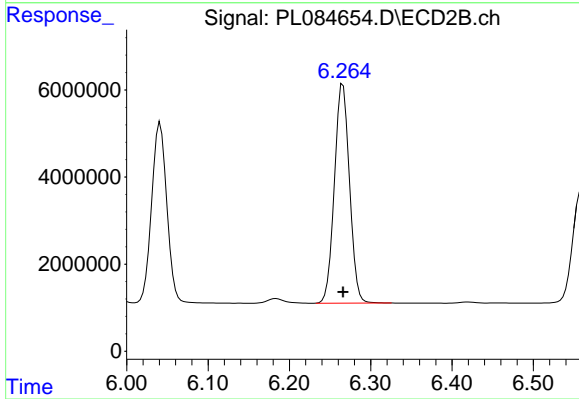
R.T.: 6.041 min  
 Delta R.T.: 0.000 min  
 Response: 54174643  
 Conc: 54.63 ng/ml



#19 Endosulfan Sulfate

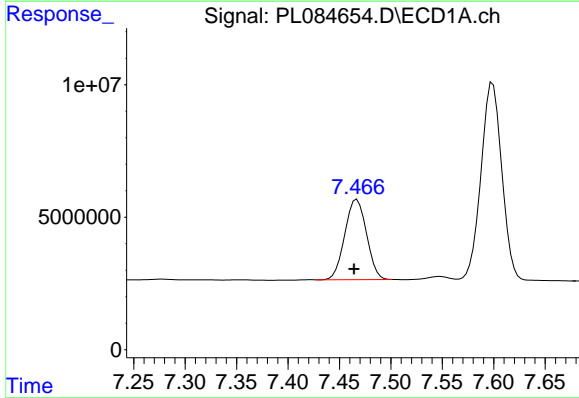
R.T.: 7.114 min  
 Delta R.T.: 0.002 min  
 Response: 99551174  
 Conc: 49.83 ng/ml

Instrument :  
 ECD\_L  
 ClientSampleId :



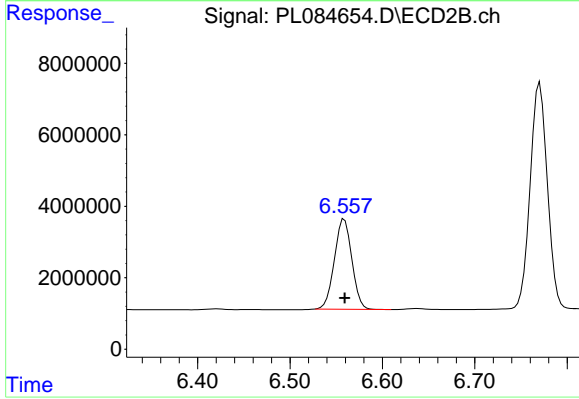
#19 Endosulfan Sulfate

R.T.: 6.266 min  
 Delta R.T.: 0.000 min  
 Response: 64980978  
 Conc: 54.64 ng/ml



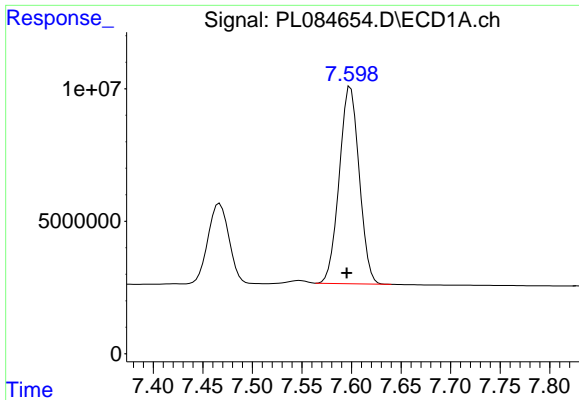
#20 Methoxychlor

R.T.: 7.467 min  
 Delta R.T.: 0.003 min  
 Response: 44511979  
 Conc: 46.38 ng/ml



#20 Methoxychlor

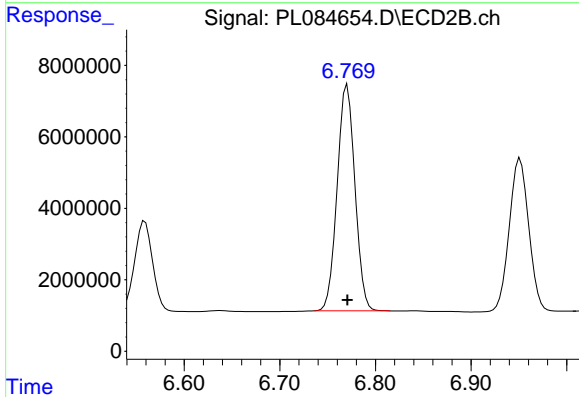
R.T.: 6.559 min  
 Delta R.T.: 0.000 min  
 Response: 33146700  
 Conc: 48.31 ng/ml



#21 Endrin ketone

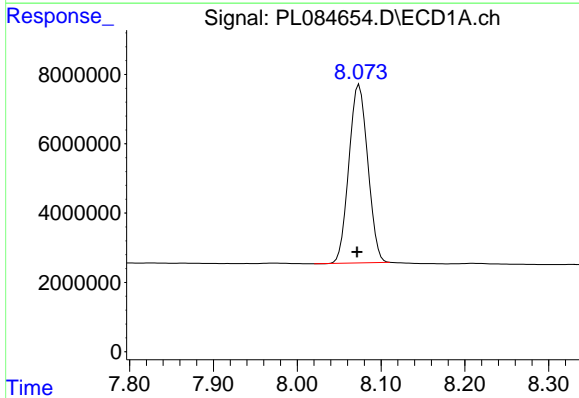
R.T.: 7.599 min  
 Delta R.T.: 0.004 min  
 Response: 104065994  
 Conc: 52.02 ng/ml

Instrument :  
 ECD\_L  
 ClientSampleId :



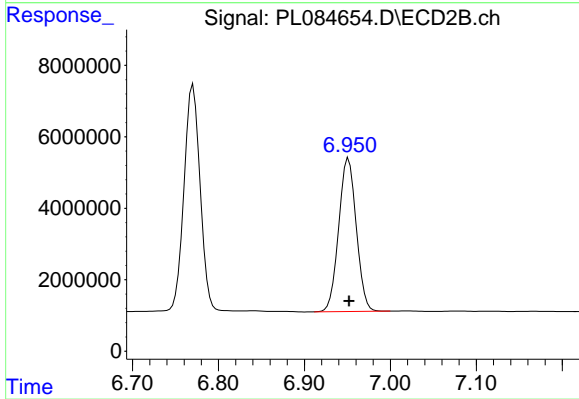
#21 Endrin ketone

R.T.: 6.770 min  
 Delta R.T.: 0.000 min  
 Response: 81850951  
 Conc: 56.73 ng/ml



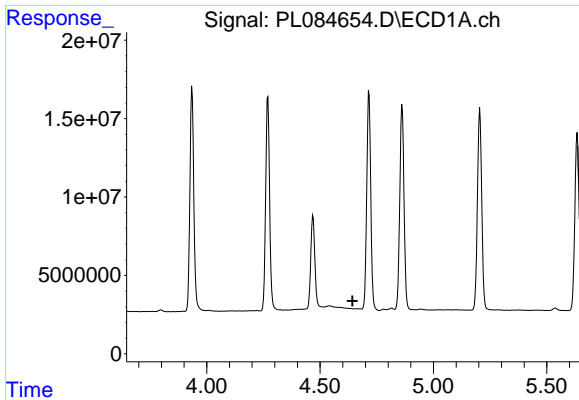
#22 Mirex

R.T.: 8.074 min  
 Delta R.T.: 0.003 min  
 Response: 80708407  
 Conc: 48.60 ng/ml



#22 Mirex

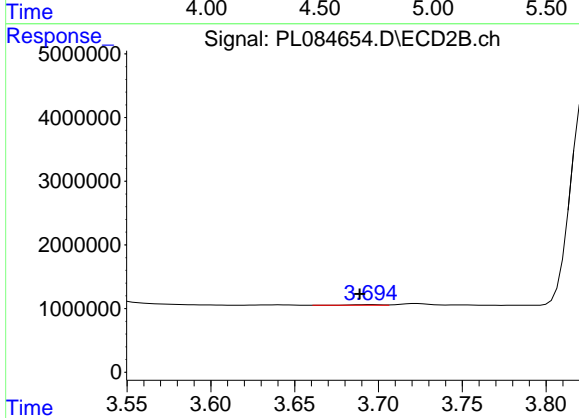
R.T.: 6.951 min  
 Delta R.T.: 0.000 min  
 Response: 60972673  
 Conc: 52.87 ng/ml



#23 Chlordane-1

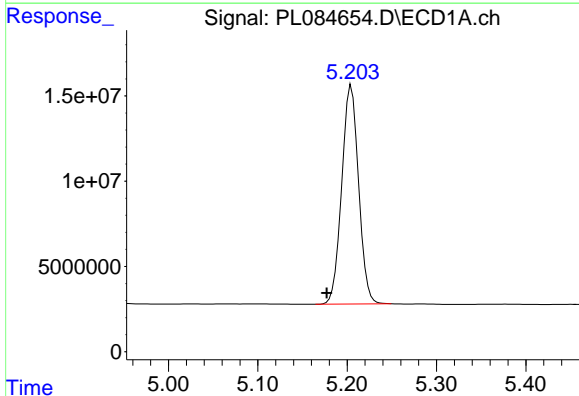
R.T.: 0.000 min  
 Exp R.T.: 4.644 min  
 Response: 0  
 Conc: N.D.

Instrument :  
 ECD\_L  
 ClientSampleId :



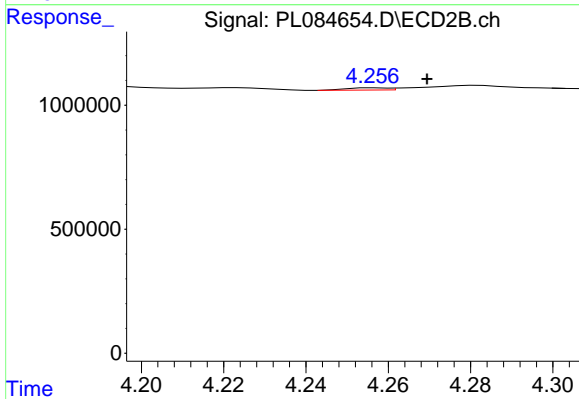
#23 Chlordane-1

R.T.: 3.695 min  
 Delta R.T.: 0.006 min  
 Response: 121251  
 Conc: 3.16 ng/ml



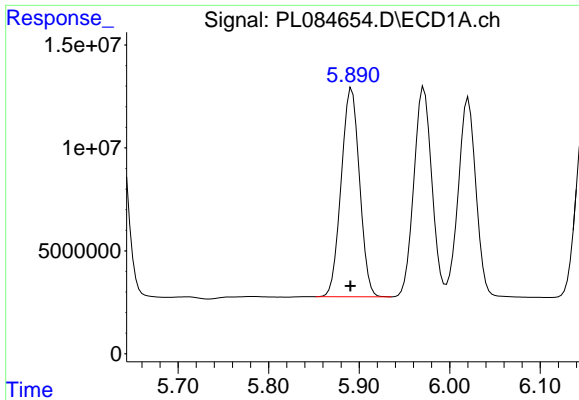
#24 Chlordane-2

R.T.: 5.205 min  
 Delta R.T.: 0.028 min  
 Response: 168307363  
 Conc: 1474.21 ng/ml



#24 Chlordane-2

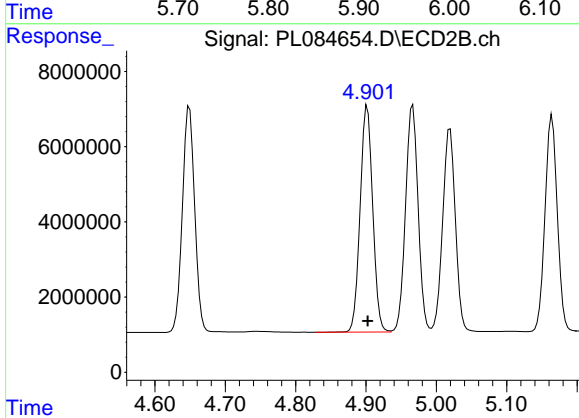
R.T.: 4.257 min  
 Delta R.T.: -0.012 min  
 Response: 61838  
 Conc: 1.23 ng/ml



#25 Chlordane-3

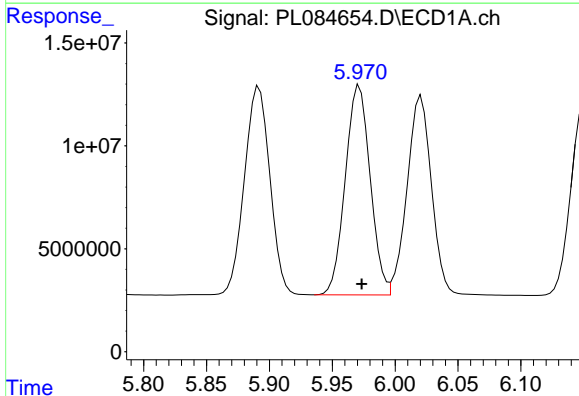
R.T.: 5.892 min  
 Delta R.T.: 0.001 min  
 Response: 142747367  
 Conc: 353.91 ng/ml

Instrument :  
 ECD\_L  
 ClientSampleId :



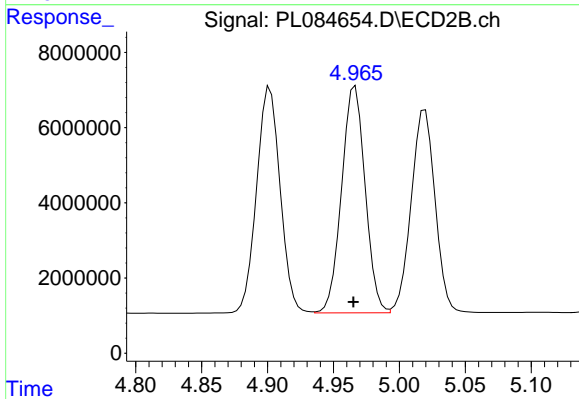
#25 Chlordane-3

R.T.: 4.902 min  
 Delta R.T.: 0.000 min  
 Response: 74864932  
 Conc: 540.43 ng/ml



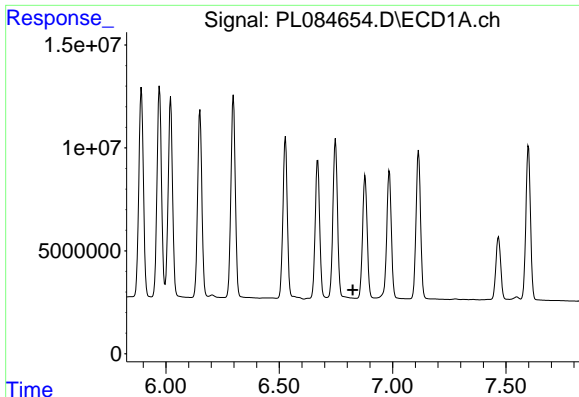
#26 Chlordane-4

R.T.: 5.972 min  
 Delta R.T.: -0.002 min  
 Response: 140379455  
 Conc: 289.81 ng/ml



#26 Chlordane-4

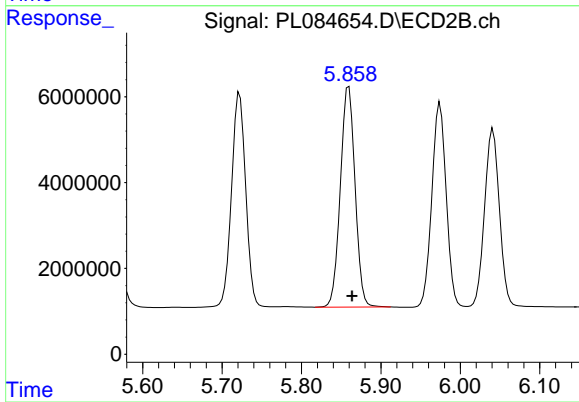
R.T.: 4.967 min  
 Delta R.T.: 0.001 min  
 Response: 74865127  
 Conc: 521.61 ng/ml



#27 Chlordane-5

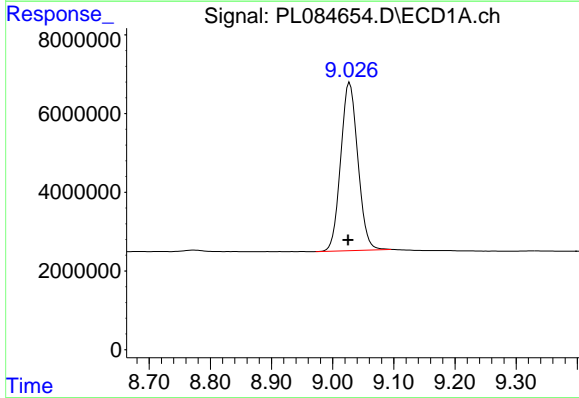
R.T.: 0.000 min  
 Exp R.T.: 6.824 min  
 Response: 0  
 Conc: N.D.

Instrument :  
 ECD\_L  
 ClientSampleId :



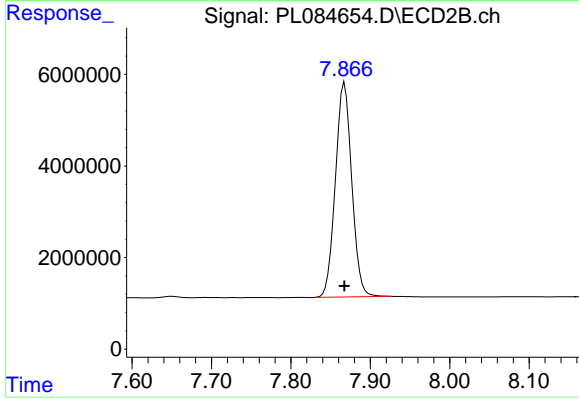
#27 Chlordane-5

R.T.: 5.860 min  
 Delta R.T.: -0.004 min  
 Response: 66302799  
 Conc: 1301.82 ng/ml



#28 Decachlorobiphenyl

R.T.: 9.028 min  
 Delta R.T.: 0.003 min  
 Response: 83229966  
 Conc: 51.15 ng/ml



#28 Decachlorobiphenyl

R.T.: 7.868 min  
 Delta R.T.: 0.000 min  
 Response: 67048954  
 Conc: 53.78 ng/ml