

Data Path : Z:\pestpcbsrv\HPCHEM1\ECD\_L\Data\PL081024\  
Data File : PL090922.D  
Signal(s) : Signal #1: ECD1A.ch Signal #2: ECD2B.ch  
Acq On : 09 Aug 2024 11:17  
Operator : AR\AJ  
Sample : PEM065  
Misc :  
ALS Vial : 3 Sample Multiplier: 1

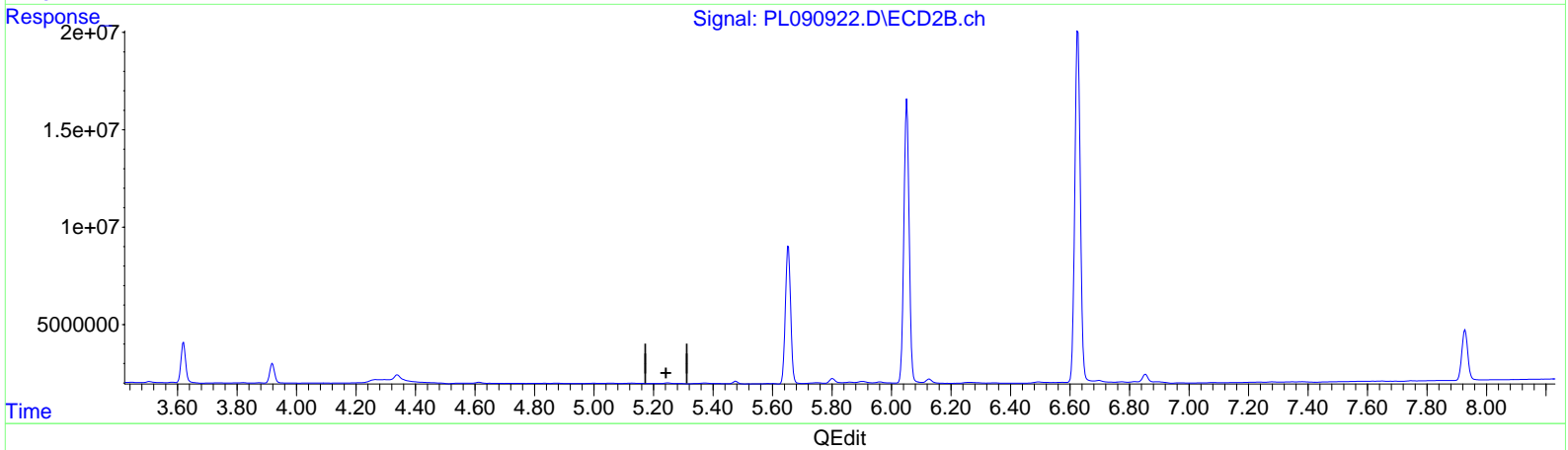
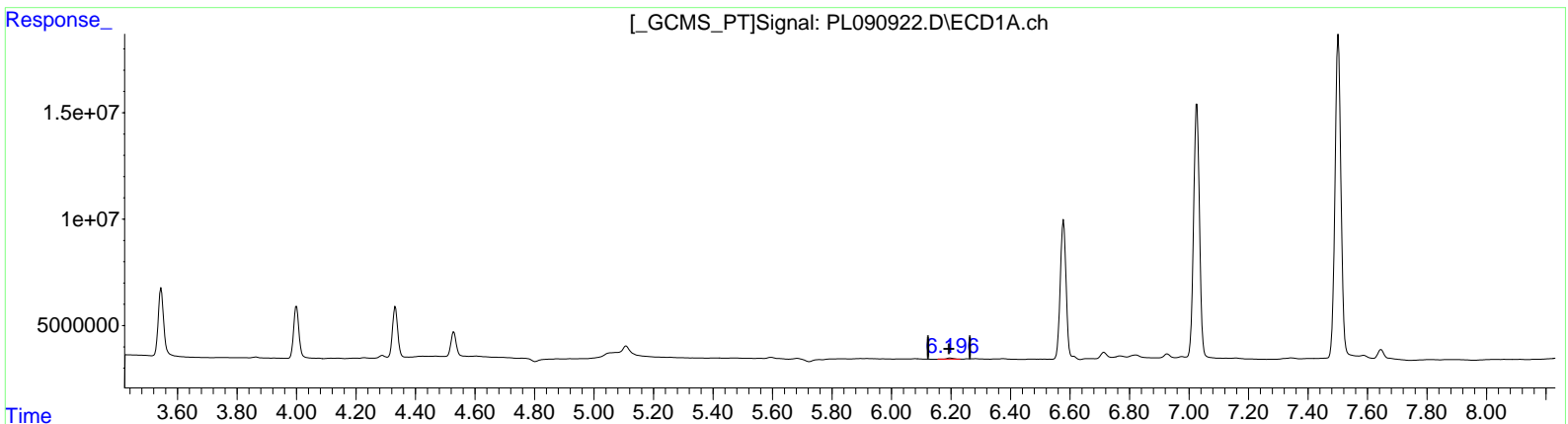
Instrument :  
ECD\_L  
LabSampleId :  
PEM065

Manual Integrations APPROVED

Reviewed By :Abdul Mirza 08/12/2024  
Supervised By :Ankita Jodhani 08/12/2024

Integration File signal 1: autoint1.e  
Integration File signal 2: autoint2.e  
Quant Time: Aug 09 23:14:59 2024  
Quant Method : Z:\pestpcbsrv\HPCHEM1\ECD\_L\methods\PL080824CLP.M  
Quant Title : GC Extractables  
QLast Update : Thu Aug 08 15:00:49 2024  
Response via : Initial Calibration  
Integrator: ChemStation

Volume Inj. : 1 µl  
Signal #1 Phase : ZB-MR2 Signal #2 Phase: ZB-MR1  
Signal #1 Info : 30M x 0.32mm x0.2 Signal #2 Info : 30M x 0.32mm x 0.50µm



(12) 4,4'-DDE (B)  
6.197min 0.367 ng/ml  
response 733616

(12) 4,4'-DDE #2 (B)  
0.000min 0.000 ng/ml  
response 0

Data Path : Z:\pestpcbsrv\HPCHEM1\ECD\_L\Data\PL081024\  
 Data File : PL090922.D  
 Signal(s) : Signal #1: ECD1A.ch Signal #2: ECD2B.ch  
 Acq On : 09 Aug 2024 11:17  
 Operator : AR\AJ  
 Sample : PEM065  
 Misc :  
 ALS Vial : 3 Sample Multiplier: 1

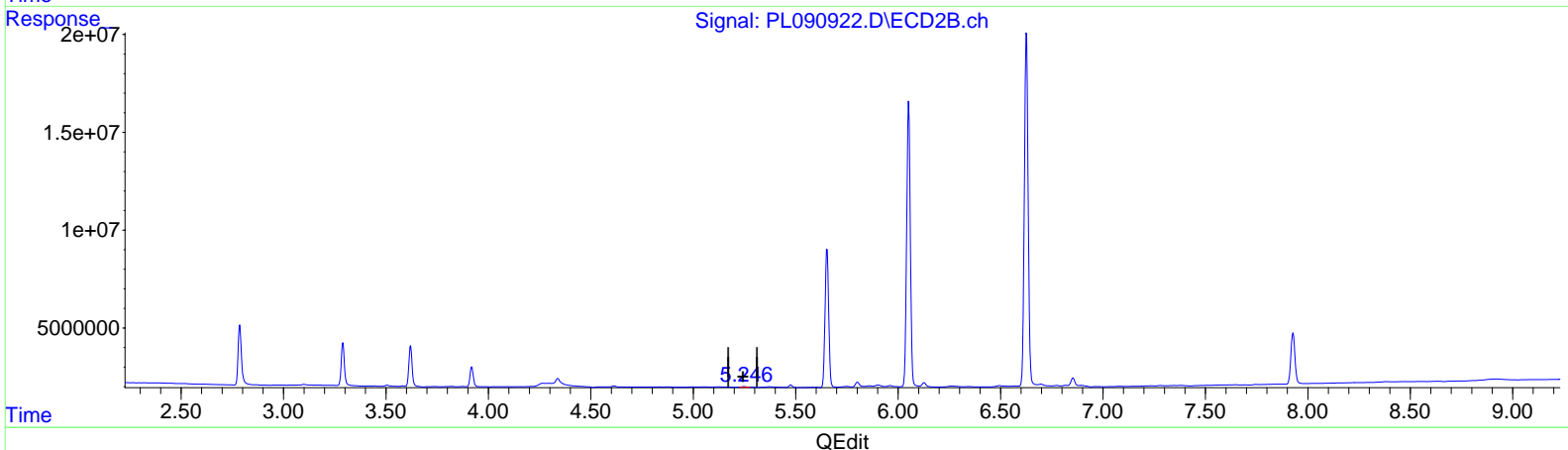
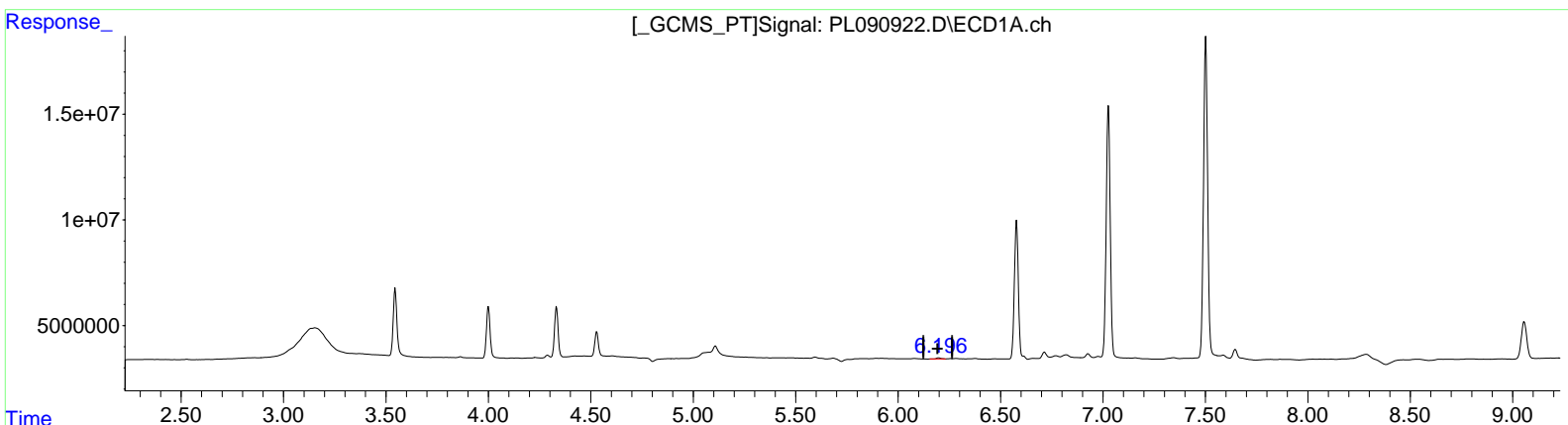
**Instrument :**  
 ECD\_L  
**LabSampleId :**  
 PEM065

**Manual IntegrationsAPPROVED**

Reviewed By :Abdul Mirza 08/12/2024  
 Supervised By :Ankita Jodhani 08/12/2024

Integration File signal 1: autoint1.e  
 Integration File signal 2: autoint2.e  
 Quant Time: Aug 09 23:14:59 2024  
 Quant Method : Z:\pestpcbsrv\HPCHEM1\ECD\_L\methods\PL080824CLP.M  
 Quant Title : GC Extractables  
 QLast Update : Thu Aug 08 15:00:49 2024  
 Response via : Initial Calibration  
 Integrator: ChemStation

Volume Inj. : 1 µl  
 Signal #1 Phase : ZB-MR2 Signal #2 Phase: ZB-MR1  
 Signal #1 Info : 30M x 0.32mm x0.2 Signal #2 Info : 30M x 0.32mm x 0.50µm



(12) 4,4'-DDE (B)  
 6.197min 0.367 ng/ml  
 response 733616

(12) 4,4'-DDE #2 (B)  
 5.246min 0.216 ng/ml m  
 response 403837

Data Path : Z:\pestpcbsrv\HPCHEM1\ECD\_L\Data\PL081024\  
 Data File : PL090922.D  
 Signal(s) : Signal #1: ECD1A.ch Signal #2: ECD2B.ch  
 Acq On : 09 Aug 2024 11:17  
 Operator : AR\AJ  
 Sample : PEM065  
 Misc :  
 ALS Vial : 3 Sample Multiplier: 1

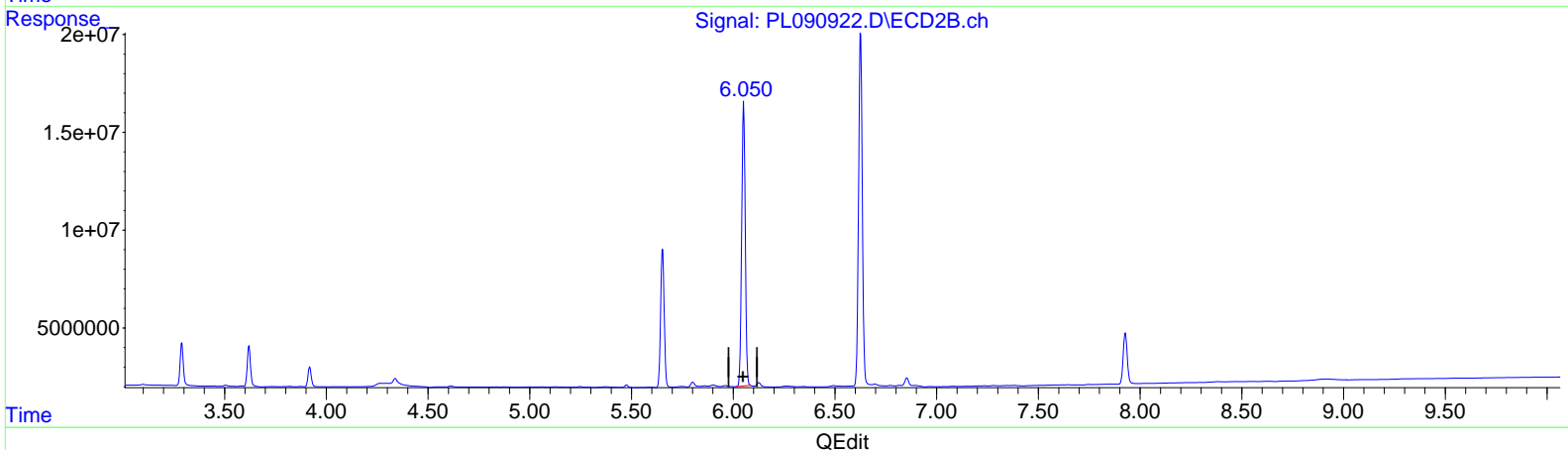
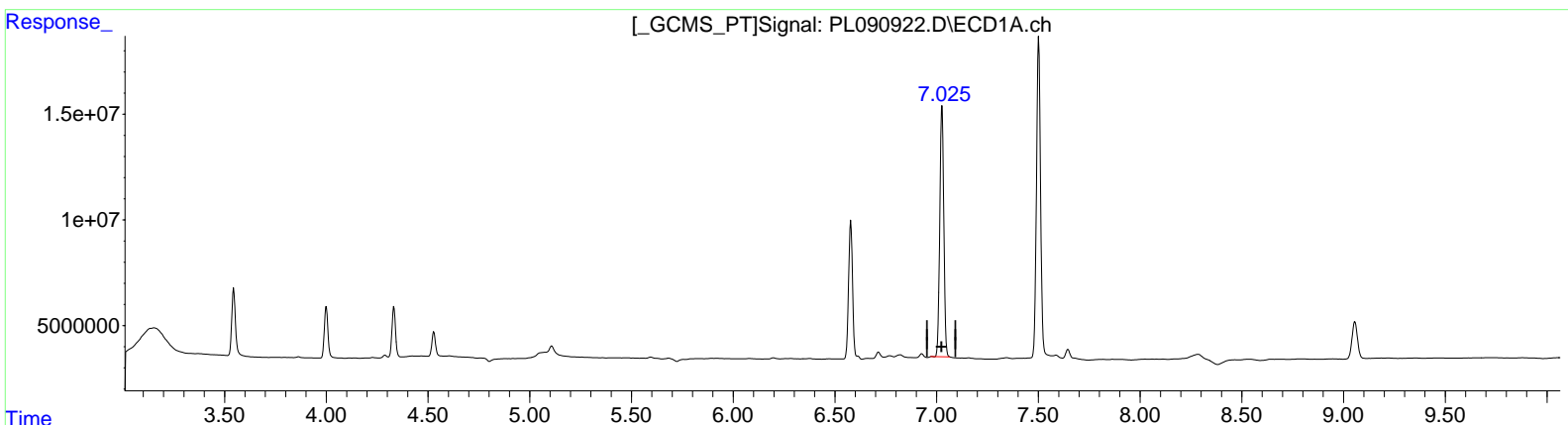
**Instrument :**  
 ECD\_L  
**LabSampleId :**  
 PEM065

**Manual IntegrationsAPPROVED**

Reviewed By :Abdul Mirza 08/12/2024  
 Supervised By :Ankita Jodhani 08/12/2024

Integration File signal 1: autoint1.e  
 Integration File signal 2: autoint2.e  
 Quant Time: Aug 09 23:14:59 2024  
 Quant Method : Z:\pestpcbsrv\HPCHEM1\ECD\_L\methods\PL080824CLP.M  
 Quant Title : GC Extractables  
 QLast Update : Thu Aug 08 15:00:49 2024  
 Response via : Initial Calibration  
 Integrator: ChemStation

Volume Inj. : 1 µl  
 Signal #1 Phase : ZB-MR2 Signal #2 Phase: ZB-MR1  
 Signal #1 Info : 30M x 0.32mm x0.2 Signal #2 Info : 30M x 0.32mm x 0.50µm



(17) 4,4'-DDT (MA)  
 7.027min 100.485 ng/ml  
 response 163096004

(17) 4,4'-DDT #2 (MA)  
 6.052min 110.488 ng/ml  
 response 177760155

Data Path : Z:\pestpcbsrv\HPCHEM1\ECD\_L\Data\PL081024\  
 Data File : PL090922.D  
 Signal(s) : Signal #1: ECD1A.ch Signal #2: ECD2B.ch  
 Acq On : 09 Aug 2024 11:17  
 Operator : AR\AJ  
 Sample : PEM065  
 Misc :  
 ALS Vial : 3 Sample Multiplier: 1

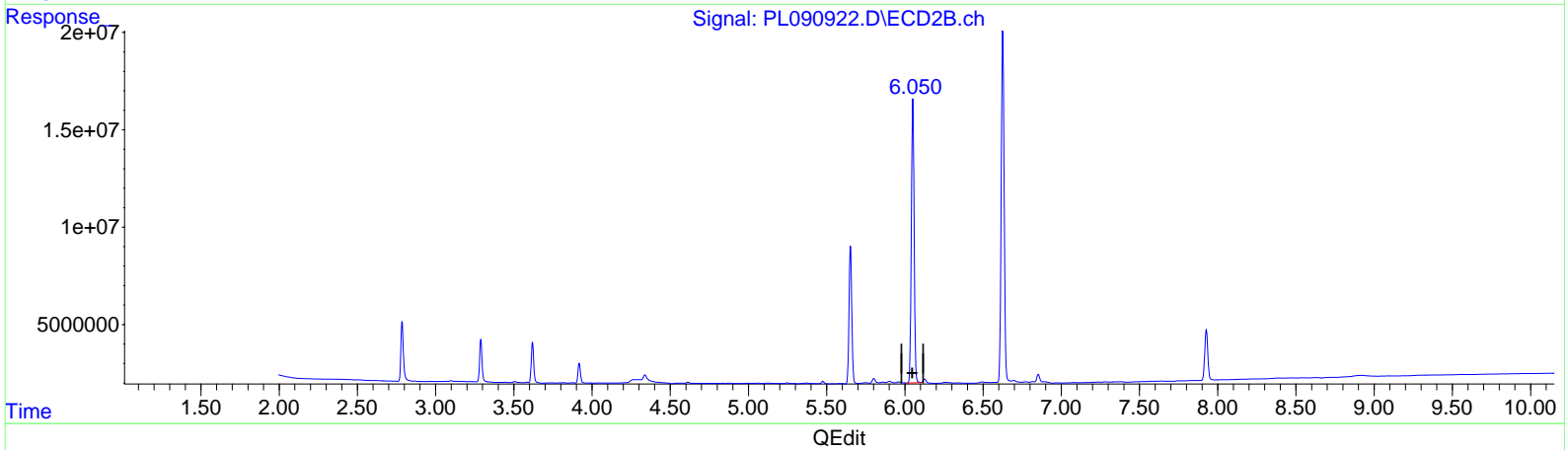
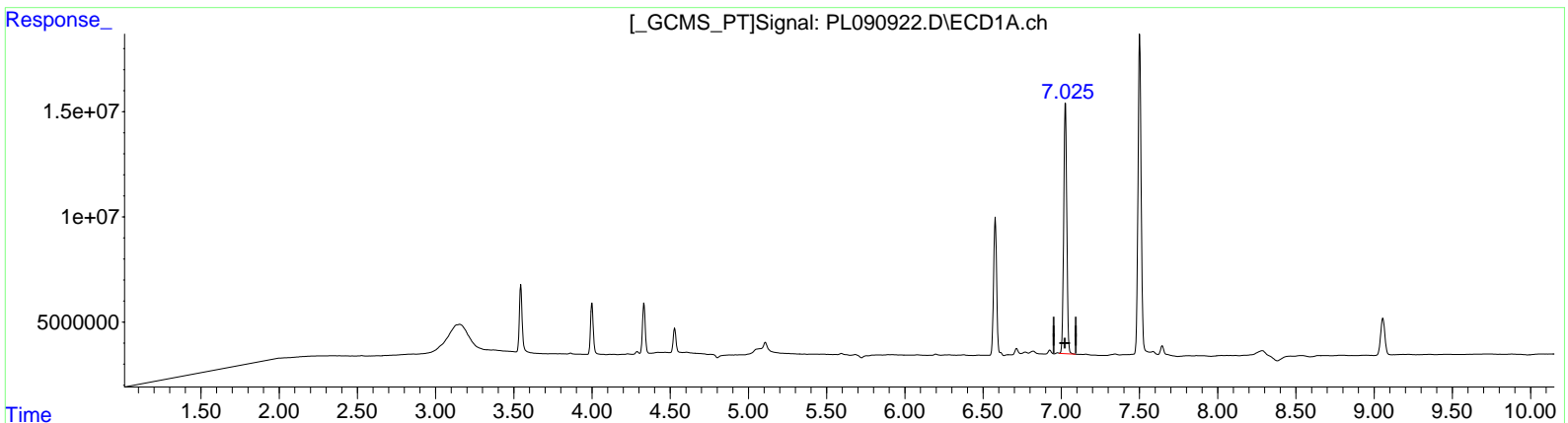
**Instrument :**  
 ECD\_L  
**LabSampleId :**  
 PEM065

**Manual IntegrationsAPPROVED**

Reviewed By :Abdul Mirza 08/12/2024  
 Supervised By :Ankita Jodhani 08/12/2024

Integration File signal 1: autoint1.e  
 Integration File signal 2: autoint2.e  
 Quant Time: Aug 09 23:14:59 2024  
 Quant Method : Z:\pestpcbsrv\HPCHEM1\ECD\_L\methods\PL080824CLP.M  
 Quant Title : GC Extractables  
 QLast Update : Thu Aug 08 15:00:49 2024  
 Response via : Initial Calibration  
 Integrator: ChemStation

Volume Inj. : 1 µl  
 Signal #1 Phase : ZB-MR2 Signal #2 Phase: ZB-MR1  
 Signal #1 Info : 30M x 0.32mm x0.2 Signal #2 Info : 30M x 0.32mm x 0.50µm



(17) 4,4'-DDT (MA)  
 7.025min 101.421 ng/ml m  
 response 164615152

(17) 4,4'-DDT #2 (MA)  
 6.050min 111.288 ng/ml m  
 response 179047350

Data Path : Z:\pestpcbsrv\HPCHEM1\ECD\_L\Data\PL081024\  
 Data File : PL090922.D  
 Signal(s) : Signal #1: ECD1A.ch Signal #2: ECD2B.ch  
 Acq On : 09 Aug 2024 11:17  
 Operator : AR\AJ  
 Sample : PEM065  
 Misc :  
 ALS Vial : 3 Sample Multiplier: 1

**Instrument :**

ECD\_L

**LabSampleId :**

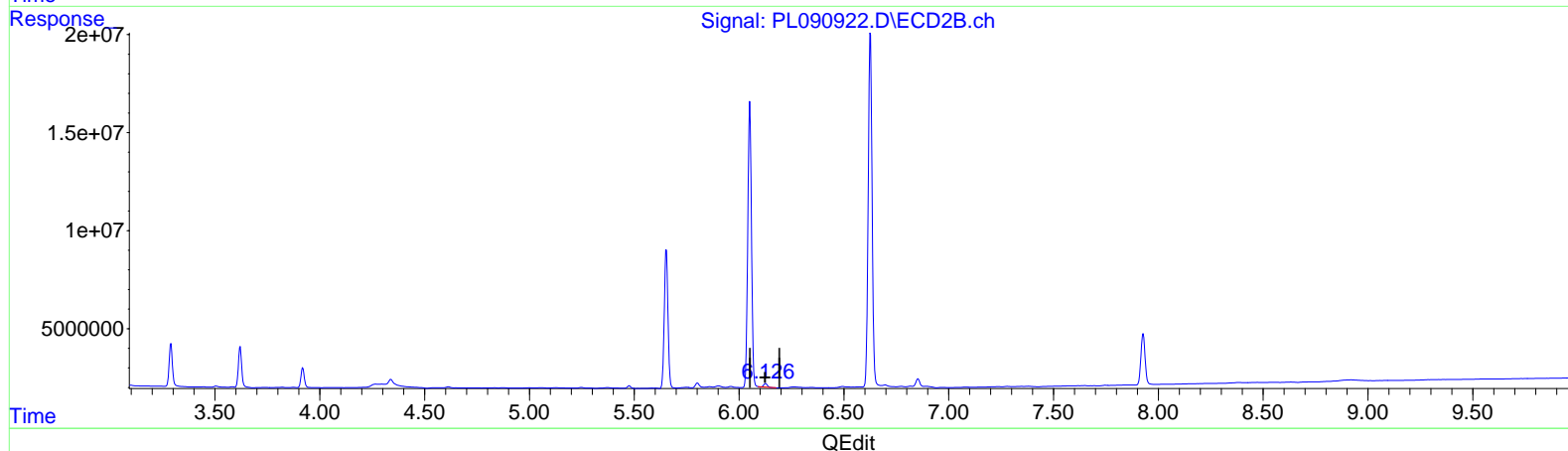
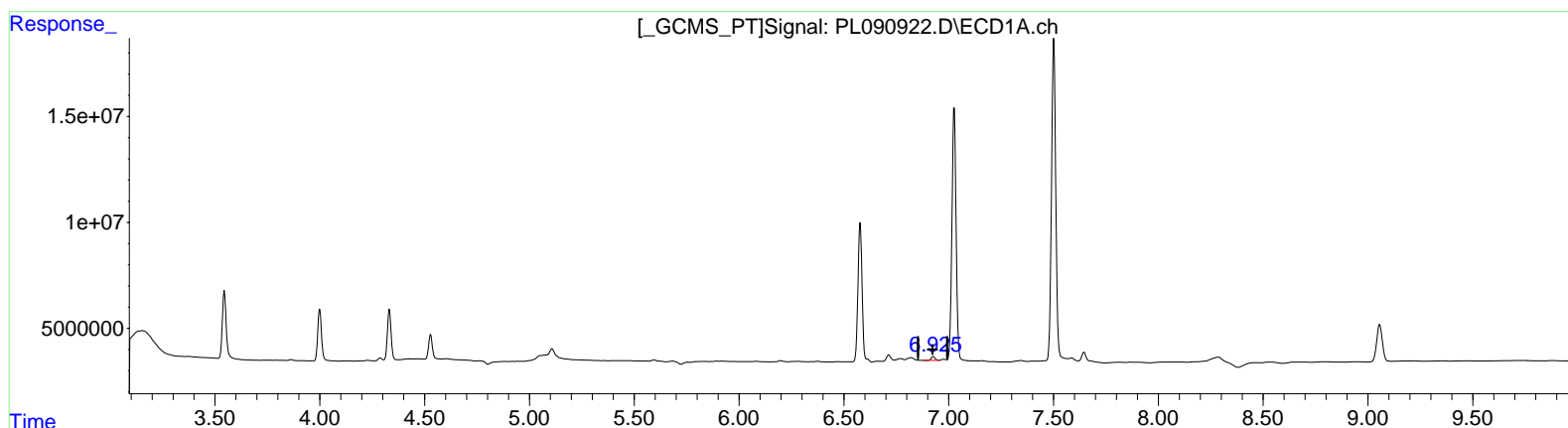
PEM065

**Manual IntegrationsAPPROVED**

Reviewed By :Abdul Mirza 08/12/2024  
 Supervised By :Ankita Jodhani 08/12/2024

Integration File signal 1: autoint1.e  
 Integration File signal 2: autoint2.e  
 Quant Time: Aug 09 23:14:59 2024  
 Quant Method : Z:\pestpcbsrv\HPCHEM1\ECD\_L\methods\PL080824CLP.M  
 Quant Title : GC Extractables  
 QLast Update : Thu Aug 08 15:00:49 2024  
 Response via : Initial Calibration  
 Integrator: ChemStation

Volume Inj. : 1 µl  
 Signal #1 Phase : ZB-MR2 Signal #2 Phase: ZB-MR1  
 Signal #1 Info : 30M x 0.32mm x0.2 Signal #2 Info : 30M x 0.32mm x 0.50µm



(18) Endrin aldehyde (B)

6.927min 1.594 ng/ml  
 response 2324432

(18) Endrin aldehyde #2 (B)

6.127min 1.461 ng/ml  
 response 1994616

Data Path : Z:\pestpcbsrv\HPCHEM1\ECD\_L\Data\PL081024\  
 Data File : PL090922.D  
 Signal(s) : Signal #1: ECD1A.ch Signal #2: ECD2B.ch  
 Acq On : 09 Aug 2024 11:17  
 Operator : AR\AJ  
 Sample : PEM065  
 Misc :  
 ALS Vial : 3 Sample Multiplier: 1

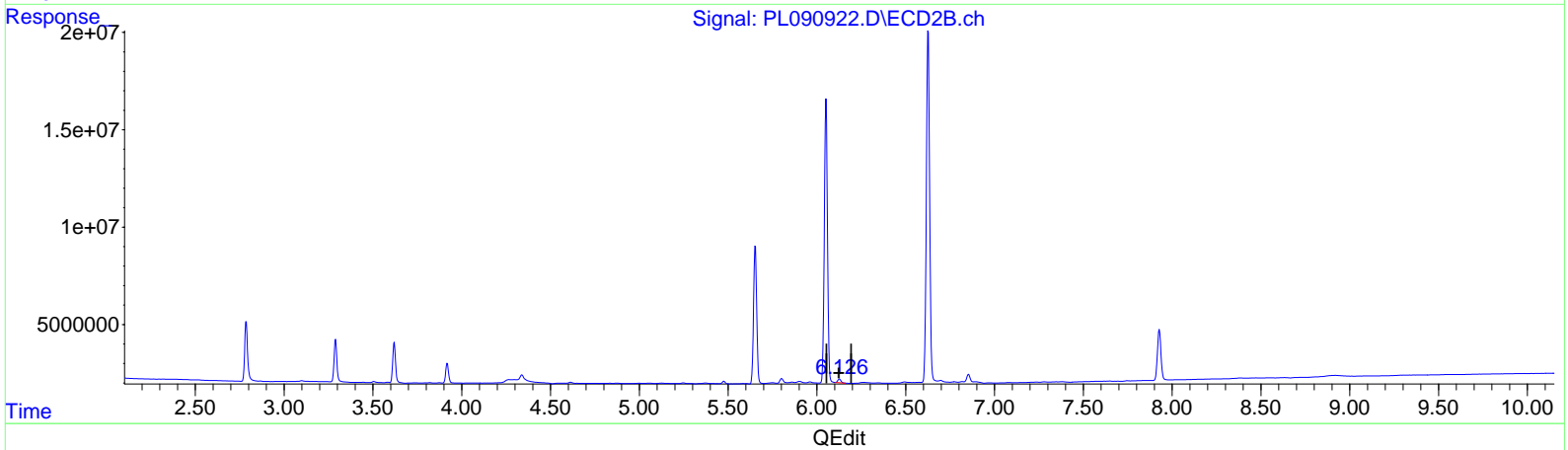
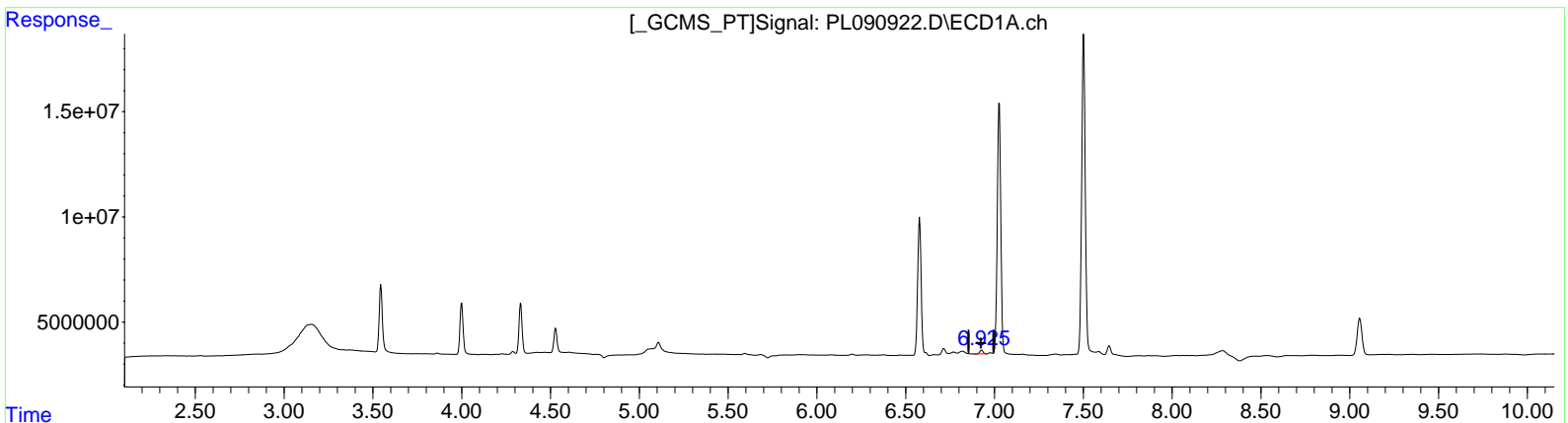
**Instrument :**  
 ECD\_L  
**LabSampleId :**  
 PEM065

**Manual Integrations APPROVED**

Reviewed By : Abdul Mirza 08/12/2024  
 Supervised By : Ankita Jodhani 08/12/2024

Integration File signal 1: autoint1.e  
 Integration File signal 2: autoint2.e  
 Quant Time: Aug 09 23:14:59 2024  
 Quant Method : Z:\pestpcbsrv\HPCHEM1\ECD\_L\methods\PL080824CLP.M  
 Quant Title : GC Extractables  
 QLast Update : Thu Aug 08 15:00:49 2024  
 Response via : Initial Calibration  
 Integrator: ChemStation

Volume Inj. : 1 µl  
 Signal #1 Phase : ZB-MR2 Signal #2 Phase: ZB-MR1  
 Signal #1 Info : 30M x 0.32mm x 0.2 Signal #2 Info : 30M x 0.32mm x 0.50µm



(18) Endrin aldehyde (B)  
 6.927min 1.594 ng/ml  
 response 2324432

(18) Endrin aldehyde #2 (B)  
 6.126min 1.761 ng/ml m  
 response 2403717

Data Path : Z:\pestpcbsrv\HPCHEM1\ECD\_L\Data\PL081024\  
 Data File : PL090922.D  
 Signal(s) : Signal #1: ECD1A.ch Signal #2: ECD2B.ch  
 Acq On : 09 Aug 2024 11:17  
 Operator : AR\AJ  
 Sample : PEM065  
 Misc :  
 ALS Vial : 3 Sample Multiplier: 1

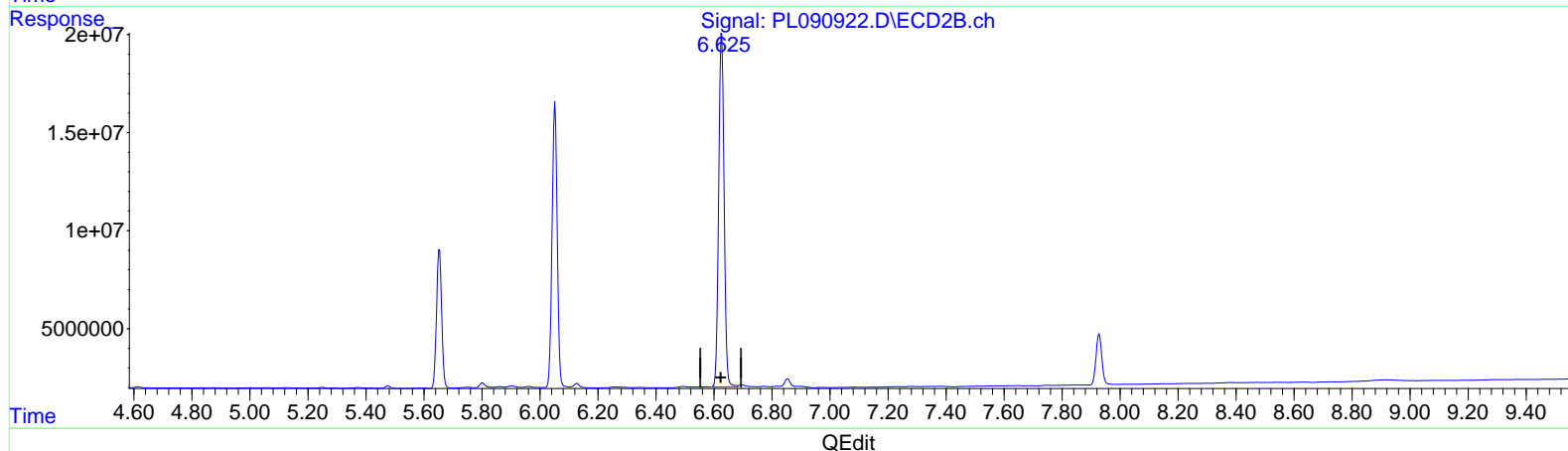
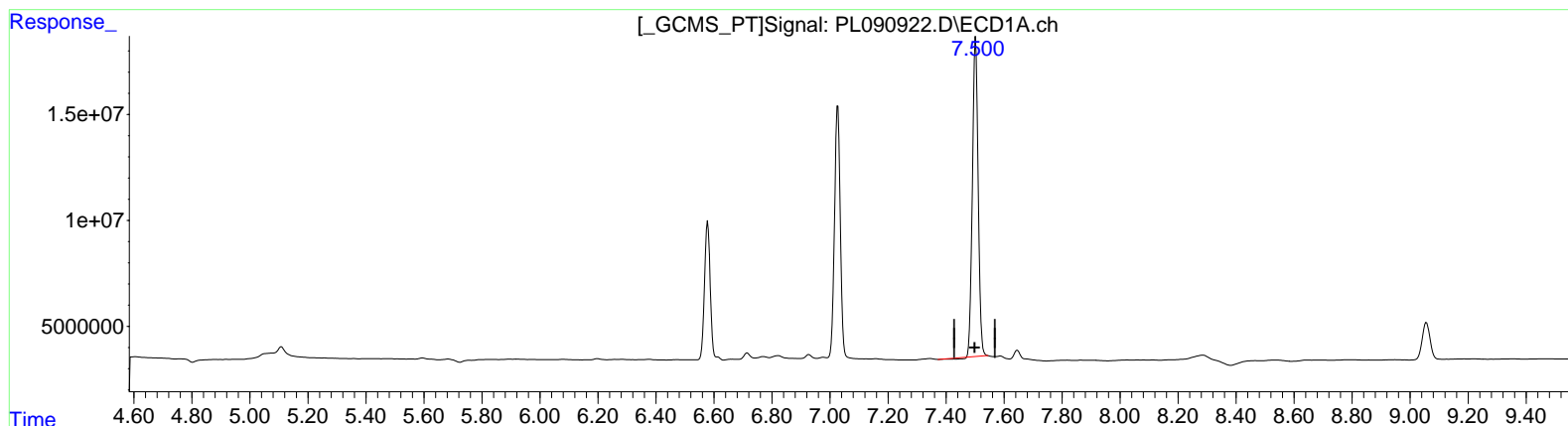
Instrument :  
 ECD\_L  
 LabSampleId :  
 PEM065

Manual Integrations APPROVED

Reviewed By : Abdul Mirza 08/12/2024  
 Supervised By : Ankita Jodhani 08/12/2024

Integration File signal 1: autoint1.e  
 Integration File signal 2: autoint2.e  
 Quant Time: Aug 09 23:14:59 2024  
 Quant Method : Z:\pestpcbsrv\HPCHEM1\ECD\_L\methods\PL080824CLP.M  
 Quant Title : GC Extractables  
 QLast Update : Thu Aug 08 15:00:49 2024  
 Response via : Initial Calibration  
 Integrator: ChemStation

Volume Inj. : 1 µl  
 Signal #1 Phase : ZB-MR2 Signal #2 Phase: ZB-MR1  
 Signal #1 Info : 30M x 0.32mm x 0.2 Signal #2 Info : 30M x 0.32mm x 0.50µm



(20) Methoxychlor (A)  
 7.502min 247.022 ng/ml  
 response 206003178

(20) Methoxychlor #2 (A)  
 6.626min 267.178 ng/ml  
 response 233078696

Data Path : Z:\pestpcbsrv\HPCHEM1\ECD\_L\Data\PL081024\  
 Data File : PL090922.D  
 Signal(s) : Signal #1: ECD1A.ch Signal #2: ECD2B.ch  
 Acq On : 09 Aug 2024 11:17  
 Operator : AR\AJ  
 Sample : PEM065  
 Misc :  
 ALS Vial : 3 Sample Multiplier: 1

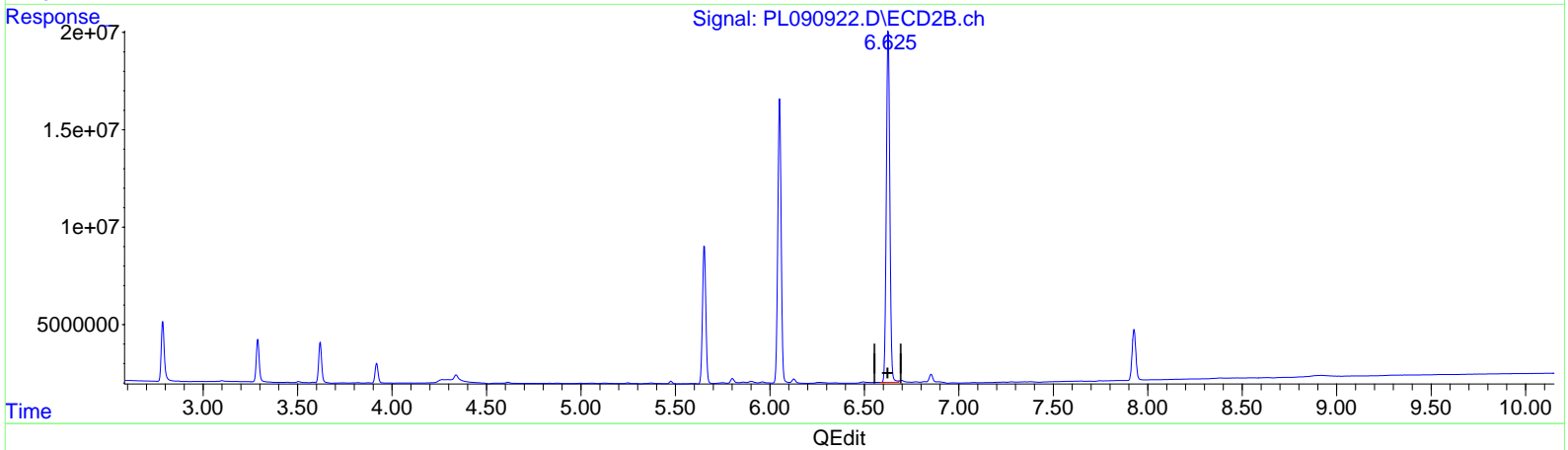
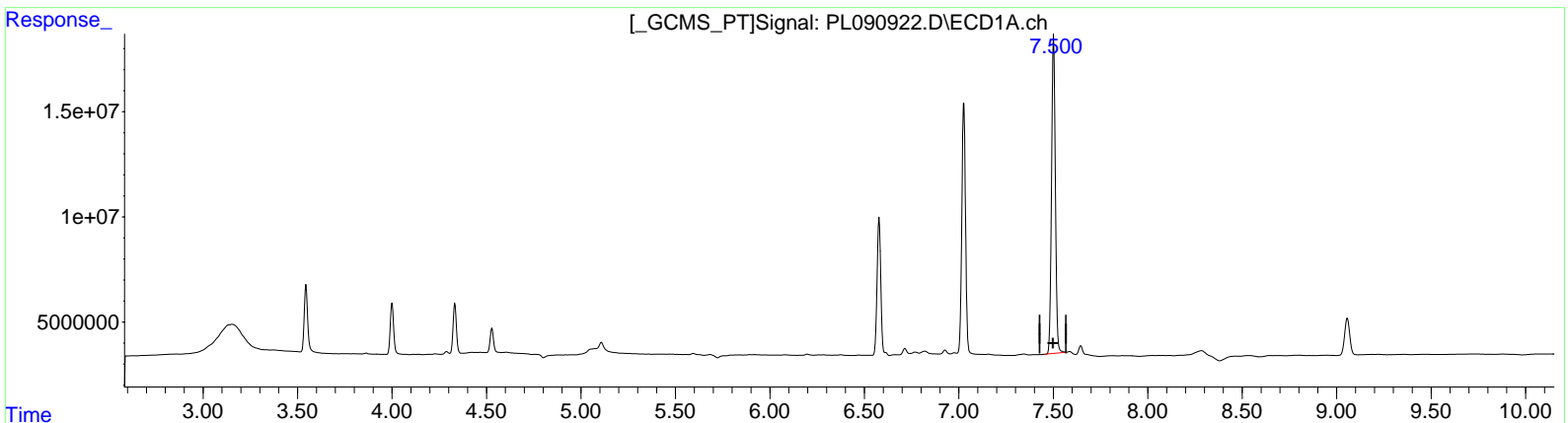
**Instrument :**  
 ECD\_L  
**LabSampleId :**  
 PEM065

**Manual Integrations APPROVED**

Reviewed By : Abdul Mirza 08/12/2024  
 Supervised By : Ankita Jodhani 08/12/2024

Integration File signal 1: autoint1.e  
 Integration File signal 2: autoint2.e  
 Quant Time: Aug 09 23:14:59 2024  
 Quant Method : Z:\pestpcbsrv\HPCHEM1\ECD\_L\methods\PL080824CLP.M  
 Quant Title : GC Extractables  
 QLast Update : Thu Aug 08 15:00:49 2024  
 Response via : Initial Calibration  
 Integrator: ChemStation

Volume Inj. : 1 µl  
 Signal #1 Phase : ZB-MR2 Signal #2 Phase: ZB-MR1  
 Signal #1 Info : 30M x 0.32mm x 0.2 Signal #2 Info : 30M x 0.32mm x 0.50µm



(20) Methoxychlor (A)  
 7.500min 253.490 ng/ml m  
 response 211397215

(20) Methoxychlor #2 (A)  
 6.626min 267.178 ng/ml  
 response 233078696