

Data Path : Z:\pestpcbsrv\HPCHEM1\ECD_L\Data\PL081120\
 Data File : PL060620.D
 Signal(s) : Signal #1: ECD1A.ch Signal #2: ECD2B.ch
 Acq On : 11 Aug 2020 16:43
 Operator : DD\AJ
 Sample : PB130896TB
 Misc :
 ALS Vial : 19 Sample Multiplier: 1

Instrument :
 ECD_L
 ClientSampleId :
 PB130896TB

Integration File signal 1: autoint1.e
 Integration File signal 2: autoint2.e
 Quant Time: Aug 11 19:18:13 2020
 Quant Method : Z:\pestpcbsrv\HPCHEM1\ECD_L\methods\PL081020.M
 Quant Title : GC Extractables
 QLast Update : Tue Aug 11 01:39:18 2020
 Response via : Initial Calibration
 Integrator: ChemStation

Volume Inj. : 1 µl
 Signal #1 Phase : ZB-MR2 Signal #2 Phase: ZB-MR1
 Signal #1 Info : 30M x 0.32mm x0.2 Signal #2 Info : 30M x 0.32mm x0.5µm

Compound	RT#1	RT#2	Resp#1	Resp#2	ng/ml	ng/ml

System Monitoring Compounds						
1) SA Tetrachlo...	3.463	4.011	37292493	51729756	19.892	19.454
28) SA Decachlor...	8.220	9.098	36077662	39686446	19.765	21.152

Target Compounds

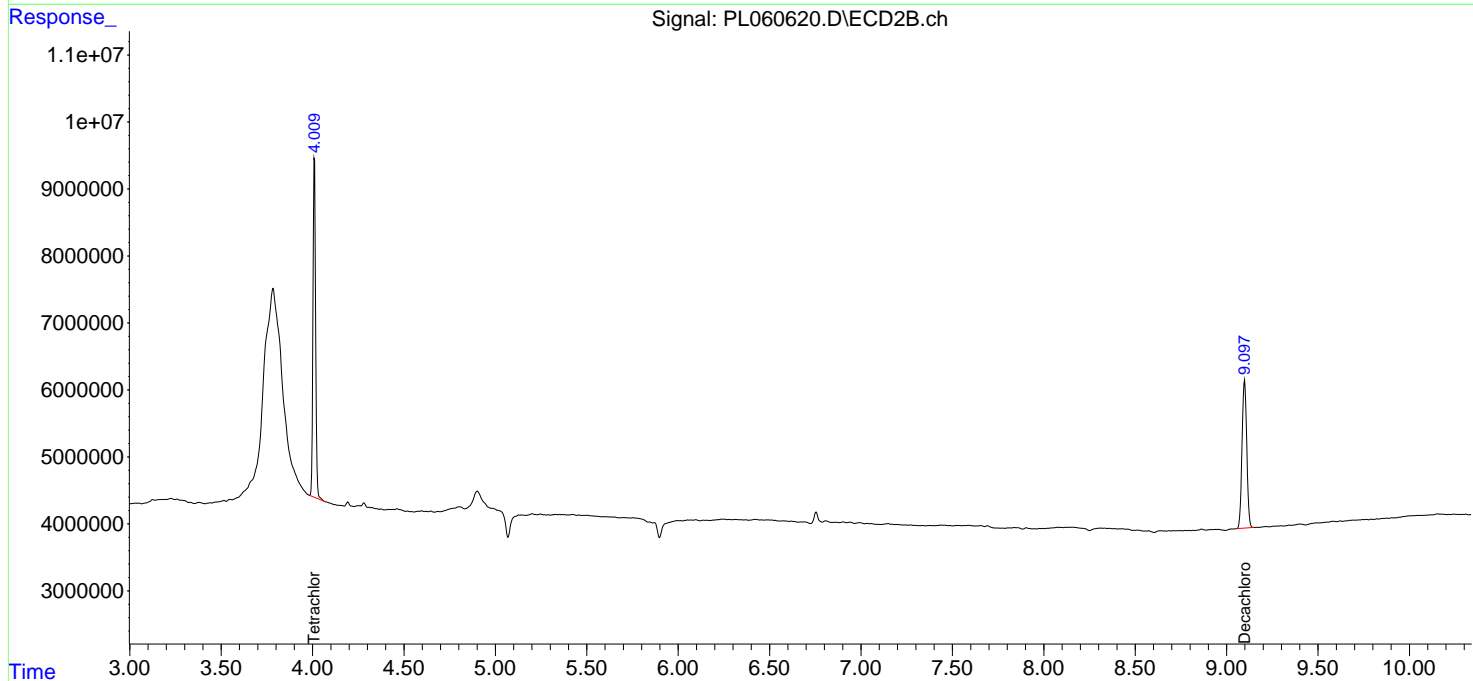
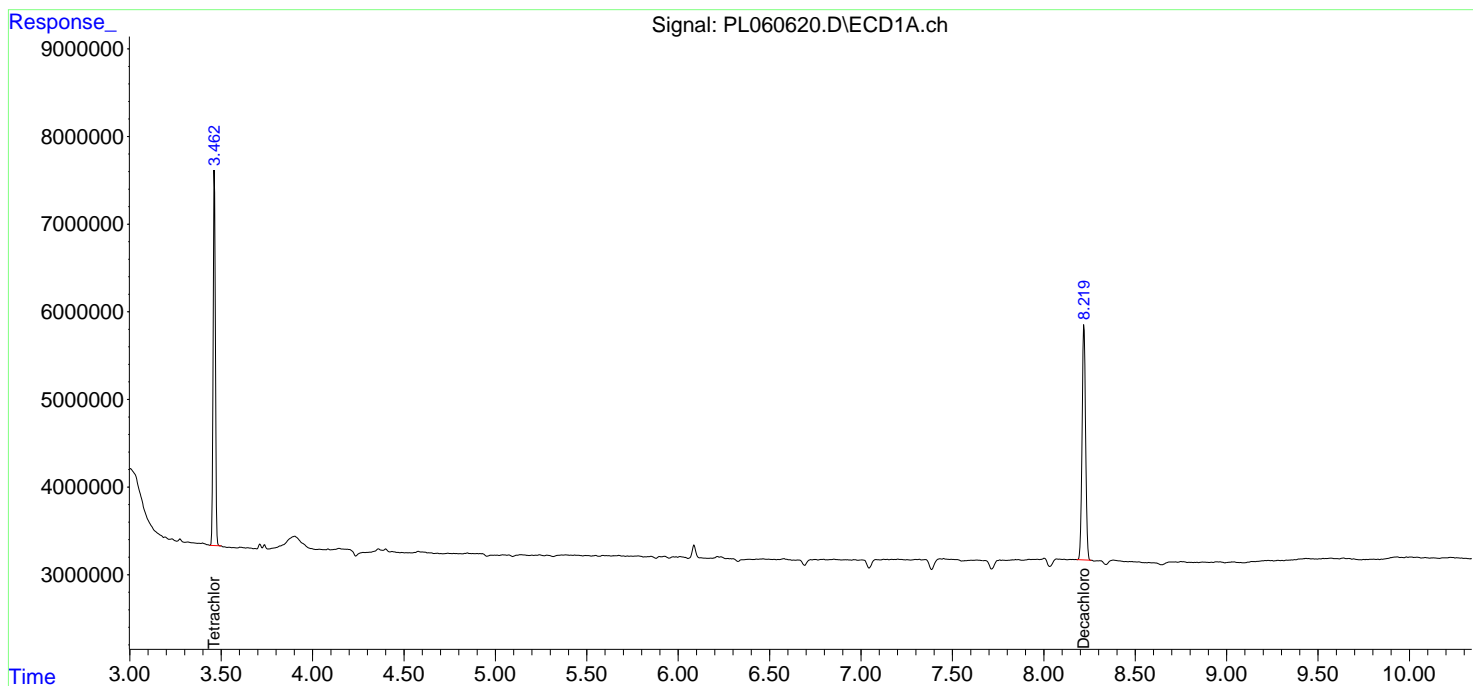
(f)=RT Delta > 1/2 Window (#)=Amounts differ by > 25% (m)=manual int.

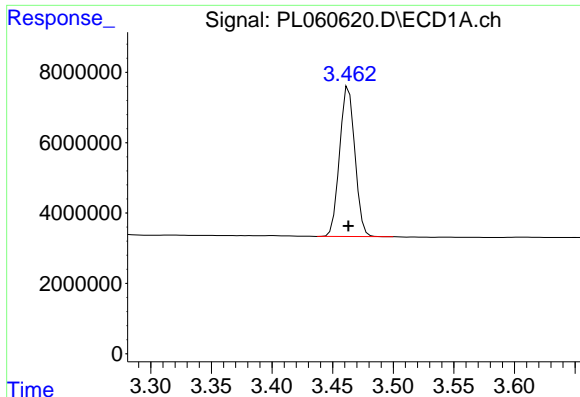
Data Path : Z:\pestpcbsrv\HPCHEM1\ECD_L\Data\PL081120\
 Data File : PL060620.D
 Signal(s) : Signal #1: ECD1A.ch Signal #2: ECD2B.ch
 Acq On : 11 Aug 2020 16:43
 Operator : DD\AJ
 Sample : PB130896TB
 Misc :
 ALS Vial : 19 Sample Multiplier: 1

Instrument :
 ECD_L
 ClientSampled :
 PB130896TB

Integration File signal 1: autoint1.e
 Integration File signal 2: autoint2.e
 Quant Time: Aug 11 19:18:13 2020
 Quant Method : Z:\pestpcbsrv\HPCHEM1\ECD_L\methods\PL081020.M
 Quant Title : GC Extractables
 QLast Update : Tue Aug 11 01:39:18 2020
 Response via : Initial Calibration
 Integrator: ChemStation

Volume Inj. : 1 µl
 Signal #1 Phase : ZB-MR2 Signal #2 Phase: ZB-MR1
 Signal #1 Info : 30M x 0.32mm x0.2 Signal #2 Info : 30M x 0.32mm x0.5µm

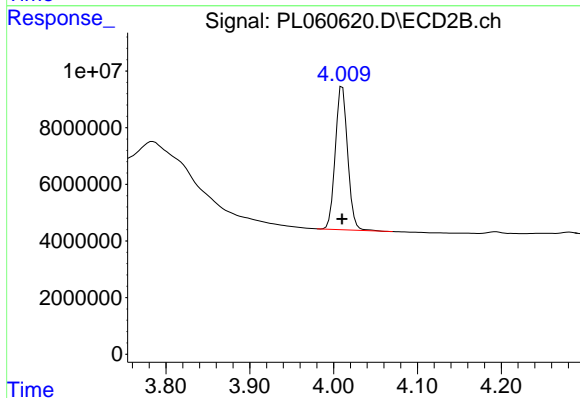




#1 Tetrachloro-m-xylene

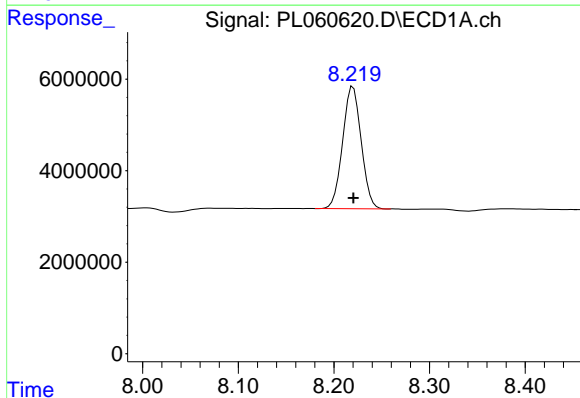
R.T.: 3.463 min
 Delta R.T.: 0.000 min
 Response: 37292493
 Conc: 19.89 ng/ml

Instrument :
 ECD_L
 ClientSampleId :
 PB130896TB



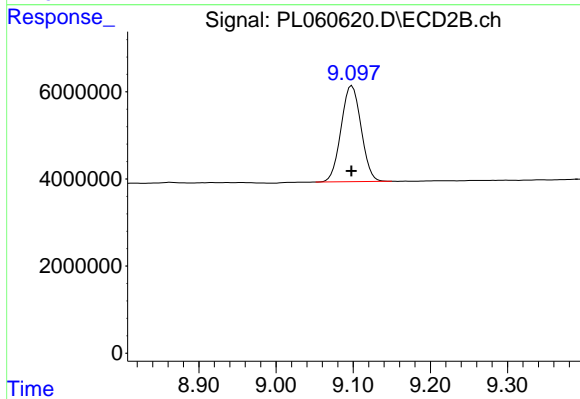
#1 Tetrachloro-m-xylene

R.T.: 4.011 min
 Delta R.T.: 0.000 min
 Response: 51729756
 Conc: 19.45 ng/ml



#28 Decachlorobiphenyl

R.T.: 8.220 min
 Delta R.T.: 0.000 min
 Response: 36077662
 Conc: 19.77 ng/ml



#28 Decachlorobiphenyl

R.T.: 9.098 min
 Delta R.T.: 0.000 min
 Response: 39686446
 Conc: 21.15 ng/ml