

Data Path : Z:\pestpcbsrv\HPCHEM1\ECD\_L\Data\PL081120\  
 Data File : PL060626.D  
 Signal(s) : Signal #1: ECD1A.ch Signal #2: ECD2B.ch  
 Acq On : 11 Aug 2020 18:08  
 Operator : DD\AJ  
 Sample : L3624-08  
 Misc :  
 ALS Vial : 25 Sample Multiplier: 1

Instrument :  
 ECD\_L  
 ClientSampleId :  
 SS-TP-2

Integration File signal 1: autoint1.e  
 Integration File signal 2: autoint2.e  
 Quant Time: Aug 11 19:19:16 2020  
 Quant Method : Z:\pestpcbsrv\HPCHEM1\ECD\_L\methods\PL081020.M  
 Quant Title : GC Extractables  
 QLast Update : Tue Aug 11 01:39:18 2020  
 Response via : Initial Calibration  
 Integrator: ChemStation

Volume Inj. : 1 µl  
 Signal #1 Phase : ZB-MR2 Signal #2 Phase: ZB-MR1  
 Signal #1 Info : 30M x 0.32mm x0.2 Signal #2 Info : 30M x 0.32mm x0.5µm

Compound	RT#1	RT#2	Resp#1	Resp#2	ng/ml	ng/ml
-----						
System Monitoring Compounds						
1) SA Tetrachlo...	3.464	4.011	33440057	46082343	17.837	17.330
28) SA Decachlor...	8.221	9.099	32895336	36202997	18.022	19.296

Target Compounds

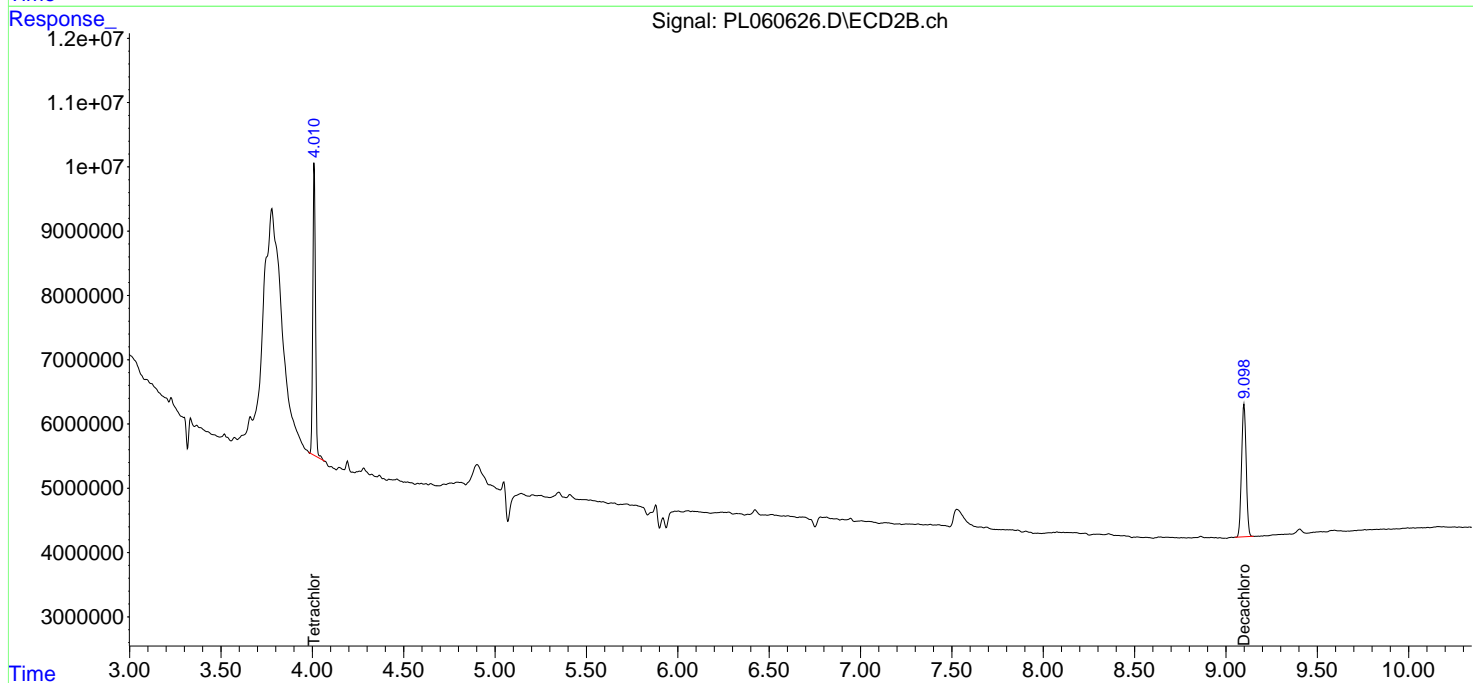
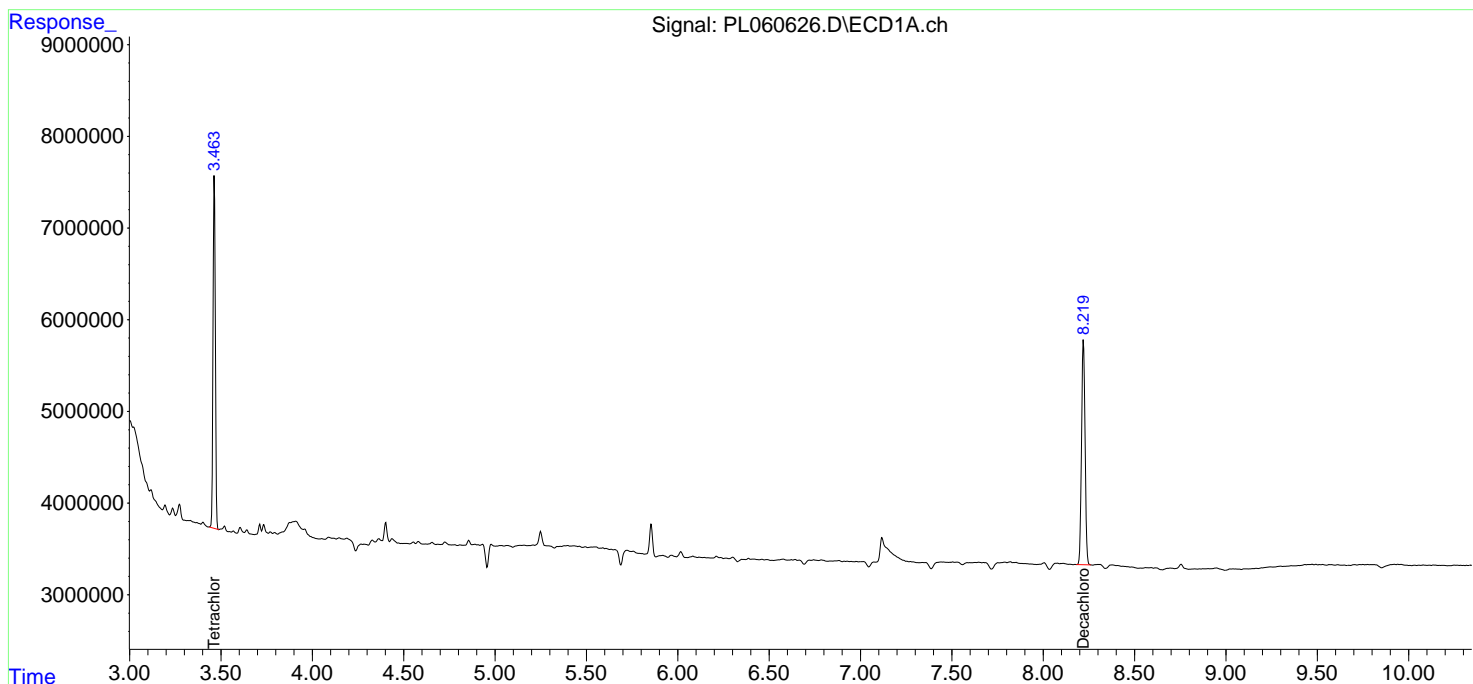
(f)=RT Delta > 1/2 Window (#)=Amounts differ by > 25% (m)=manual int.

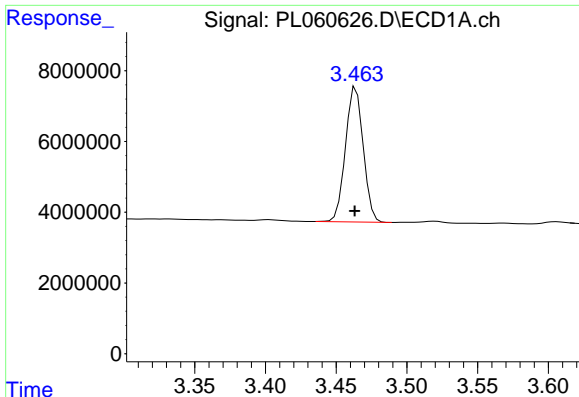
Data Path : Z:\pestpcbsrv\HPCHEM1\ECD\_L\Data\PL081120\  
 Data File : PL060626.D  
 Signal(s) : Signal #1: ECD1A.ch Signal #2: ECD2B.ch  
 Acq On : 11 Aug 2020 18:08  
 Operator : DD\AJ  
 Sample : L3624-08  
 Misc :  
 ALS Vial : 25 Sample Multiplier: 1

Instrument :  
 ECD\_L  
 ClientSampled :  
 SS-TP-2

Integration File signal 1: autoint1.e  
 Integration File signal 2: autoint2.e  
 Quant Time: Aug 11 19:19:16 2020  
 Quant Method : Z:\pestpcbsrv\HPCHEM1\ECD\_L\methods\PL081020.M  
 Quant Title : GC Extractables  
 QLast Update : Tue Aug 11 01:39:18 2020  
 Response via : Initial Calibration  
 Integrator: ChemStation

Volume Inj. : 1 µl  
 Signal #1 Phase : ZB-MR2 Signal #2 Phase: ZB-MR1  
 Signal #1 Info : 30M x 0.32mm x0.2 Signal #2 Info : 30M x 0.32mm x0.5µm

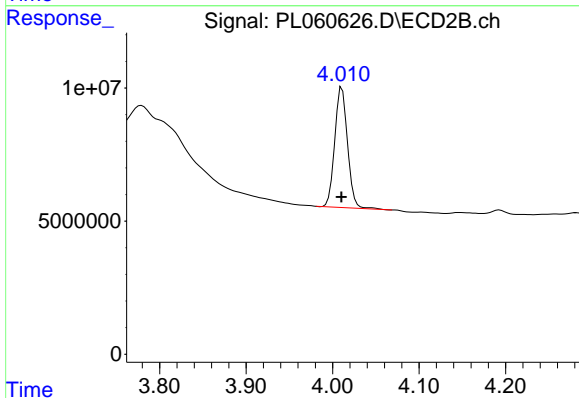




#1 Tetrachloro-m-xylene

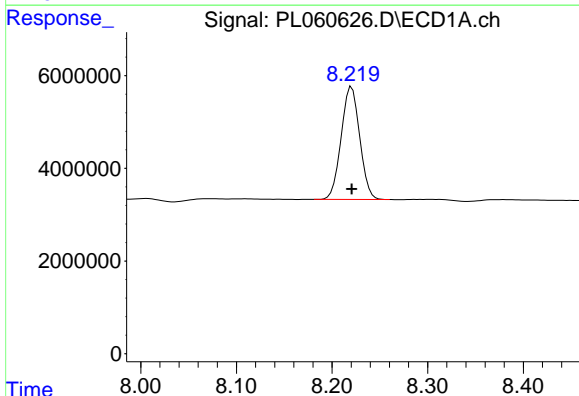
R.T.: 3.464 min  
Delta R.T.: 0.001 min  
Response: 33440057  
Conc: 17.84 ng/ml

Instrument :  
ECD\_L  
ClientSampled :  
SS-TP-2



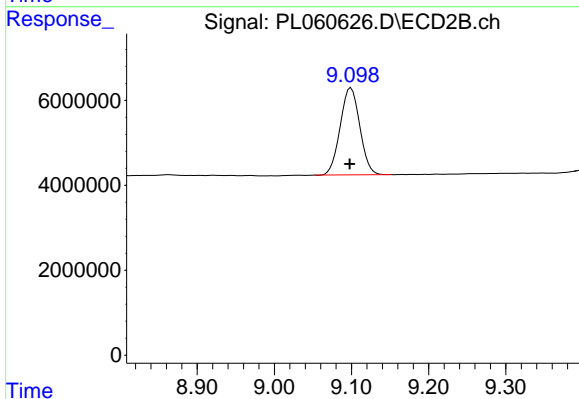
#1 Tetrachloro-m-xylene

R.T.: 4.011 min  
Delta R.T.: 0.000 min  
Response: 46082343  
Conc: 17.33 ng/ml



#28 Decachlorobiphenyl

R.T.: 8.221 min  
Delta R.T.: 0.000 min  
Response: 32895336  
Conc: 18.02 ng/ml



#28 Decachlorobiphenyl

R.T.: 9.099 min  
Delta R.T.: 0.002 min  
Response: 36202997  
Conc: 19.30 ng/ml