

Data Path : Z:\pestpcbsrv\HPCHEM1\ECD\_L\Data\PL081120\  
 Data File : PL060627.D  
 Signal(s) : Signal #1: ECD1A.ch Signal #2: ECD2B.ch  
 Acq On : 11 Aug 2020 18:22  
 Operator : DD\AJ  
 Sample : L3624-13  
 Misc :  
 ALS Vial : 26 Sample Multiplier: 1

Instrument :  
 ECD\_L  
 ClientSampleId :  
 SS-TP-3

Integration File signal 1: autoint1.e  
 Integration File signal 2: autoint2.e  
 Quant Time: Aug 11 19:19:24 2020  
 Quant Method : Z:\pestpcbsrv\HPCHEM1\ECD\_L\methods\PL081020.M  
 Quant Title : GC Extractables  
 QLast Update : Tue Aug 11 01:39:18 2020  
 Response via : Initial Calibration  
 Integrator: ChemStation

Volume Inj. : 1 µl  
 Signal #1 Phase : ZB-MR2 Signal #2 Phase: ZB-MR1  
 Signal #1 Info : 30M x 0.32mm x0.2 Signal #2 Info : 30M x 0.32mm x0.5µm

Compound	RT#1	RT#2	Resp#1	Resp#2	ng/ml	ng/ml
-----						
System Monitoring Compounds						
1) SA Tetrachlo...	3.463	4.011	34504437	47779322	18.405	17.968
28) SA Decachlor...	8.221	9.099	29824403	33489400	16.339	17.849

Target Compounds

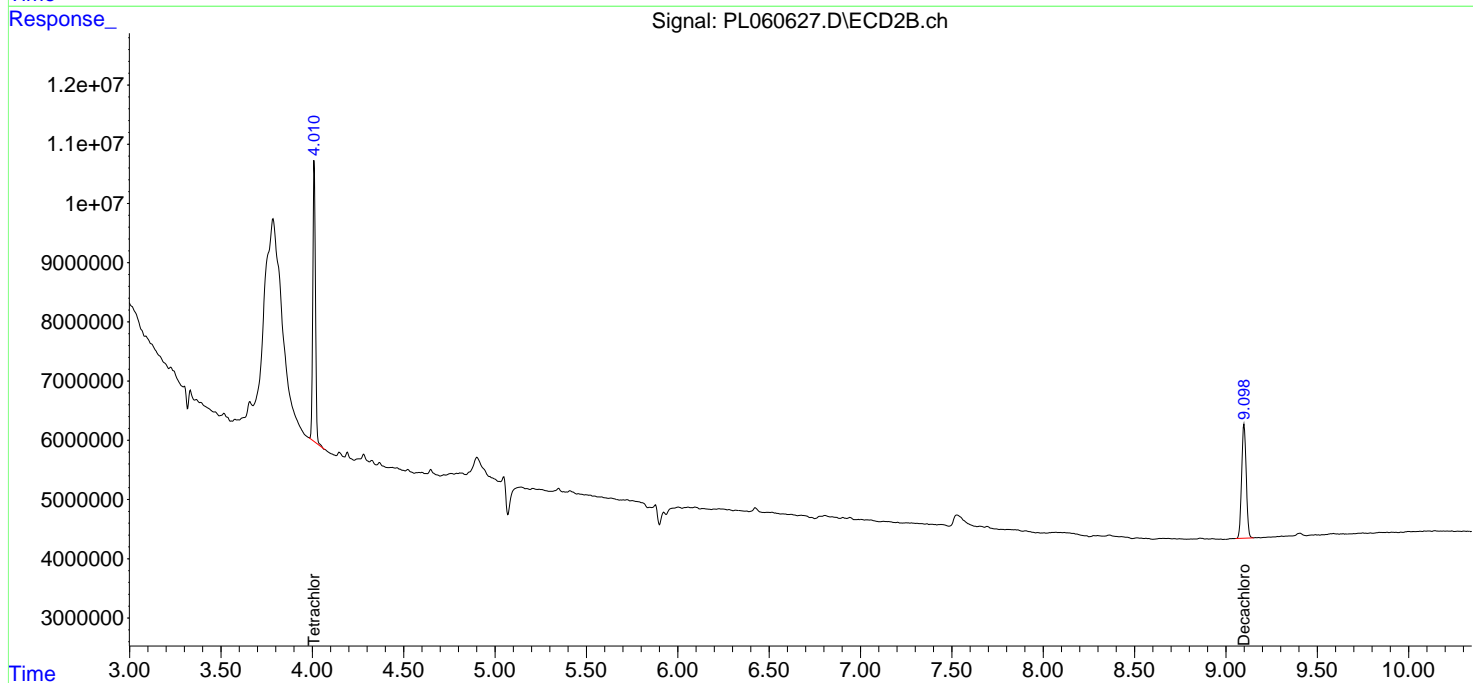
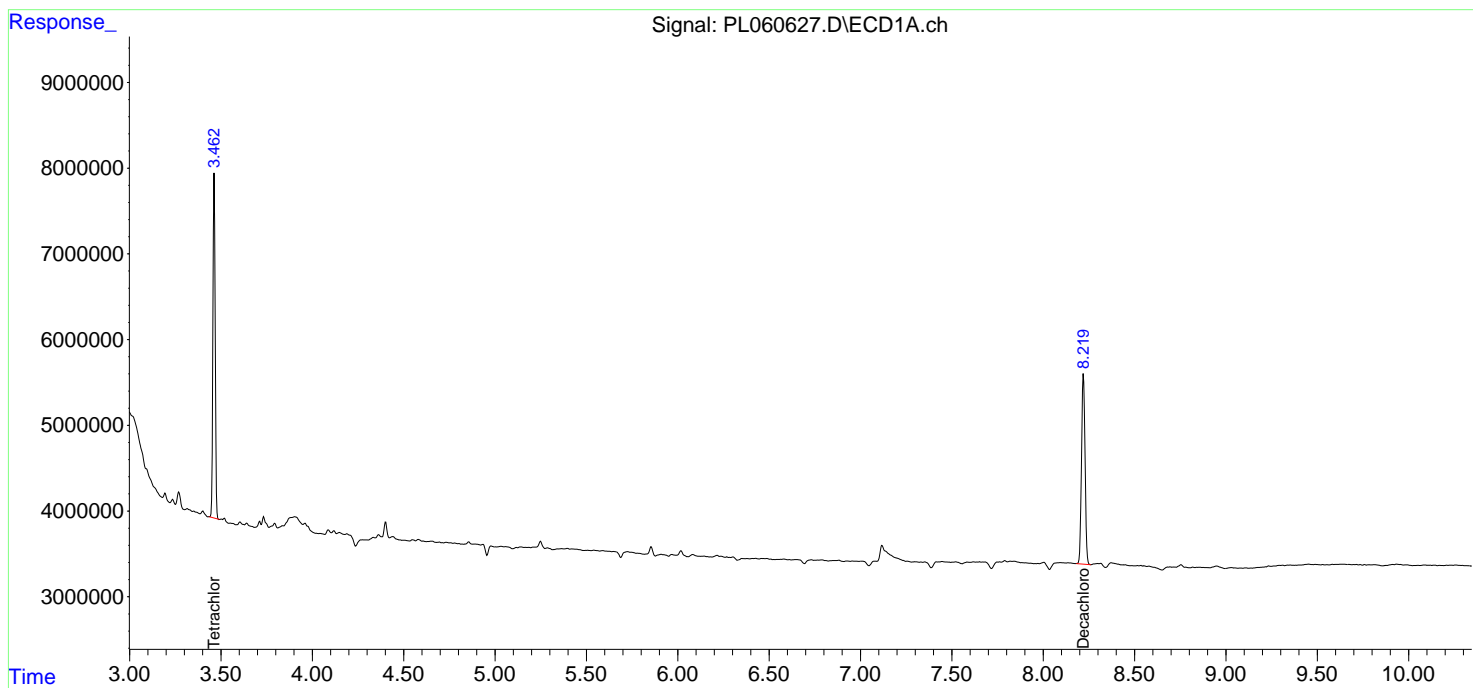
(f)=RT Delta > 1/2 Window (#)=Amounts differ by > 25% (m)=manual int.

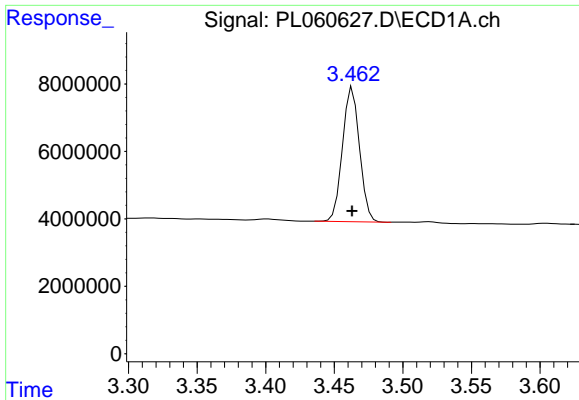
Data Path : Z:\pestpcbsrv\HPCHEM1\ECD\_L\Data\PL081120\  
 Data File : PL060627.D  
 Signal(s) : Signal #1: ECD1A.ch Signal #2: ECD2B.ch  
 Acq On : 11 Aug 2020 18:22  
 Operator : DD\AJ  
 Sample : L3624-13  
 Misc :  
 ALS Vial : 26 Sample Multiplier: 1

Instrument :  
 ECD\_L  
 ClientSampled :  
 SS-TP-3

Integration File signal 1: autoint1.e  
 Integration File signal 2: autoint2.e  
 Quant Time: Aug 11 19:19:24 2020  
 Quant Method : Z:\pestpcbsrv\HPCHEM1\ECD\_L\methods\PL081020.M  
 Quant Title : GC Extractables  
 QLast Update : Tue Aug 11 01:39:18 2020  
 Response via : Initial Calibration  
 Integrator: ChemStation

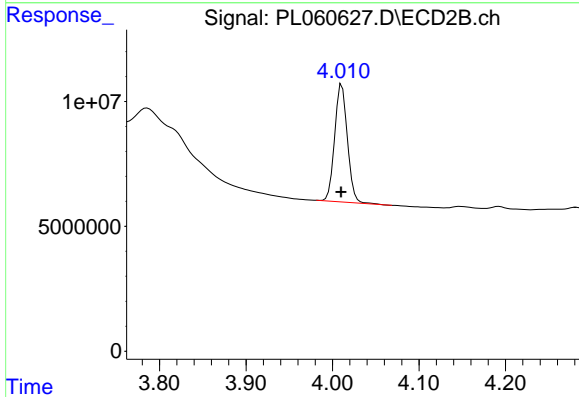
Volume Inj. : 1 µl  
 Signal #1 Phase : ZB-MR2 Signal #2 Phase: ZB-MR1  
 Signal #1 Info : 30M x 0.32mm x0.2 Signal #2 Info : 30M x 0.32mm x0.5µm



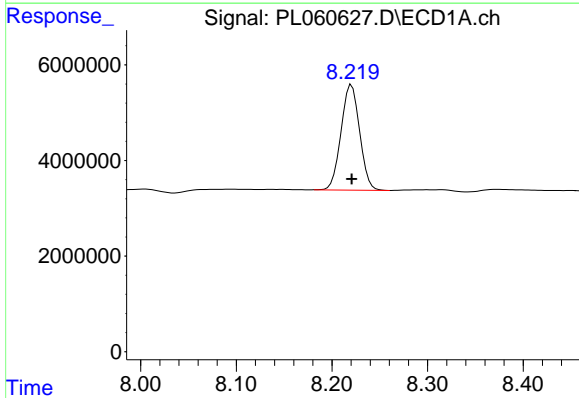


#1 Tetrachloro-m-xylene  
R.T.: 3.463 min  
Delta R.T.: 0.000 min  
Response: 34504437  
Conc: 18.41 ng/ml

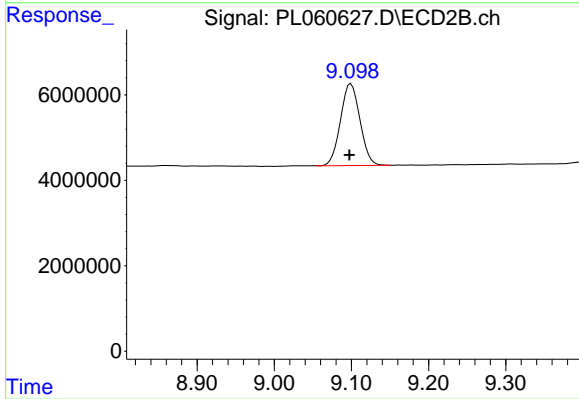
Instrument :  
ECD\_L  
ClientSampleId :  
SS-TP-3



#1 Tetrachloro-m-xylene  
R.T.: 4.011 min  
Delta R.T.: 0.000 min  
Response: 47779322  
Conc: 17.97 ng/ml



#28 Decachlorobiphenyl  
R.T.: 8.221 min  
Delta R.T.: 0.000 min  
Response: 29824403  
Conc: 16.34 ng/ml



#28 Decachlorobiphenyl  
R.T.: 9.099 min  
Delta R.T.: 0.002 min  
Response: 33489400  
Conc: 17.85 ng/ml