

Data Path : Z:\pestpcbsrv\HPCHEM1\ECD\_L\Data\PL081122\  
 Data File : PL077042.D  
 Signal(s) : Signal #1: ECD1A.ch Signal #2: ECD2B.ch  
 Acq On : 11 Aug 2022 16:49  
 Operator : AR\AJ  
 Sample : N4143-01DL 10X  
 Misc :  
 ALS Vial : 20 Sample Multiplier: 1

Instrument :  
 ECD\_L  
 ClientSampleId :

Integration File signal 1: autoint1.e  
 Integration File signal 2: autoint2.e  
 Quant Time: Aug 11 23:17:03 2022  
 Quant Method : Z:\pestpcbsrv\HPCHEM1\ECD\_L\methods\PL080822.M  
 Quant Title : GC Extractables  
 QLast Update : Tue Aug 09 09:13:15 2022  
 Response via : Initial Calibration  
 Integrator: ChemStation

Volume Inj. : 1 µl  
 Signal #1 Phase : ZB-MR2 Signal #2 Phase: ZB-MR1  
 Signal #1 Info : 30M x 0.32mm x0.2 Signal #2 Info : 30M x 0.32mm x0.5µm

	Compound	RT#1	RT#2	Resp#1	Resp#2	ng/ml	ng/ml
-----							
System Monitoring Compounds							
1)	SA Tetrachlo...	3.420	2.638	926698	3798762	0.945	1.327 #
28)	SA Decachlor...	8.919	7.745	1482392	2973169	1.964	1.321 #
Target Compounds							
2)	A alpha-BHC	3.912f	0.000	1823300	0	1.317	N.D. #
3)	MA gamma-BHC...	0.000	3.458	0	589254	N.D.	0.154 #
4)	MA Heptachlor	4.797	3.788	504343	3050393	0.410	0.850 #
5)	MB Aldrin	5.113f	4.046f	6694025	801766	5.900	0.226 #
7)	B delta-BHC	4.657f	3.969	513838	585668	0.462	0.153 #
8)	B Heptachlo...	5.569	4.564	13381575	17567116	13.252	5.780 #
9)	A Endosulfan I	5.941	4.922	1308273	10295494	1.428	3.767 #
10)	B gamma-Chl...	5.827	4.814	48175824	91016503	48.066	29.875 #
11)	B alpha-Chl...	5.905	4.876	79297466	146.1E6	79.450	49.057 #
12)	B 4,4'-DDE	6.082	5.070	2781055	8914401	3.187	3.090
13)	MA Dieldrin	6.235	5.193	10059530	26574197	10.360	8.859
14)	MA Endrin	0.000	5.481f	0	7619794	N.D.	3.000 #
15)	B Endosulfa...	6.693	5.764	1163773	39062140	1.357	14.914 #
16)	A 4,4'-DDD	6.613	0.000	3109363	0	4.081	N.D. #
17)	MA 4,4'-DDT	6.919	5.871	13039170	29549000	16.968	13.036
19)	B Endosulfa...	7.051	6.176f	955592	2381391	1.156	1.032
20)	A Methoxychlor	7.379f	6.467f	663892	1066733	1.496	0.887 #
21)	B Endrin ke...	7.524f	6.646	585104	698717	0.646	0.275 #
22)	Mirex	7.992	6.811f	1951909	495784	2.778	0.259 #
23)	Chlordane-1	4.581	3.618	3528390	8638526	93.598	88.696
24)	Chlordane-2	5.113	4.193	6694025	15912362	168.443	138.353
25)	Chlordane-3	5.827	4.814	48175824	91016503	331.402	287.477
26)	Chlordane-4	5.905	4.876	79297466	146.1E6	449.168	443.541
27)	Chlordane-5	6.764	5.539	14533761	25036113	479.683	274.565 #

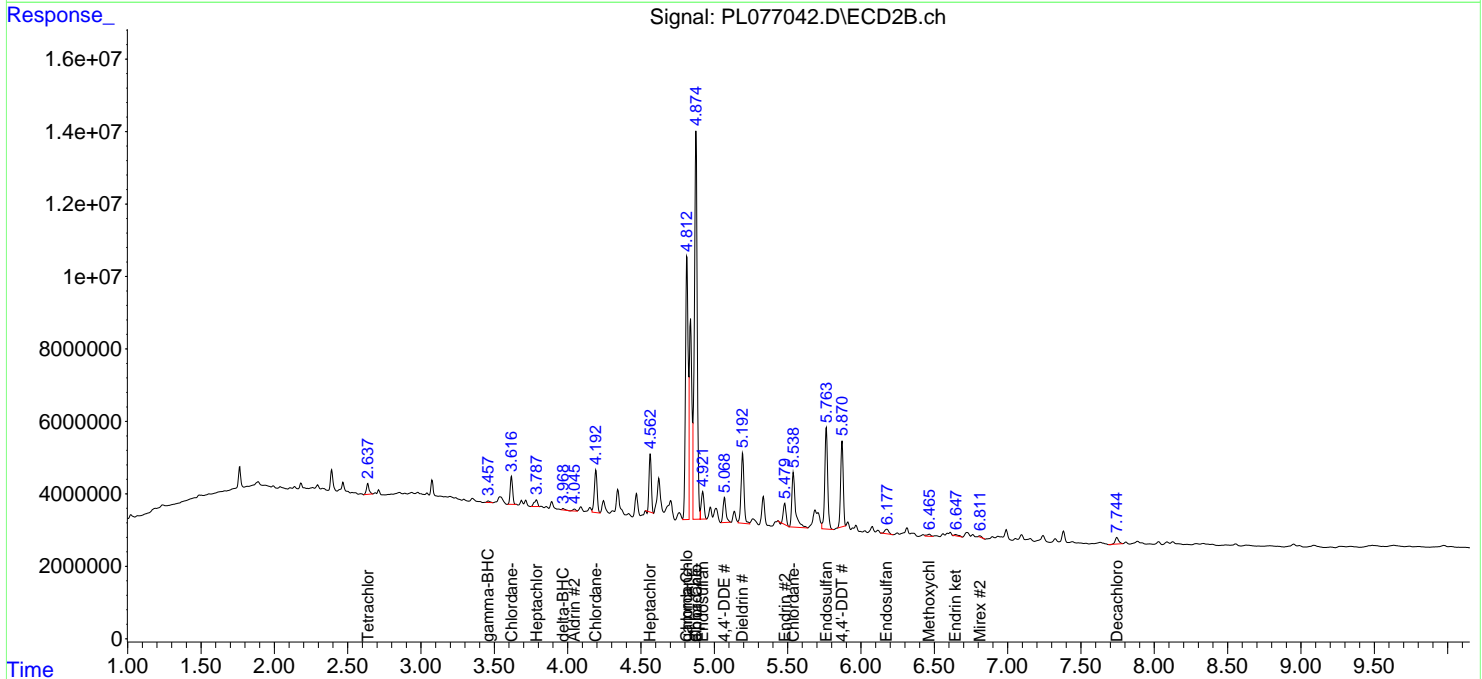
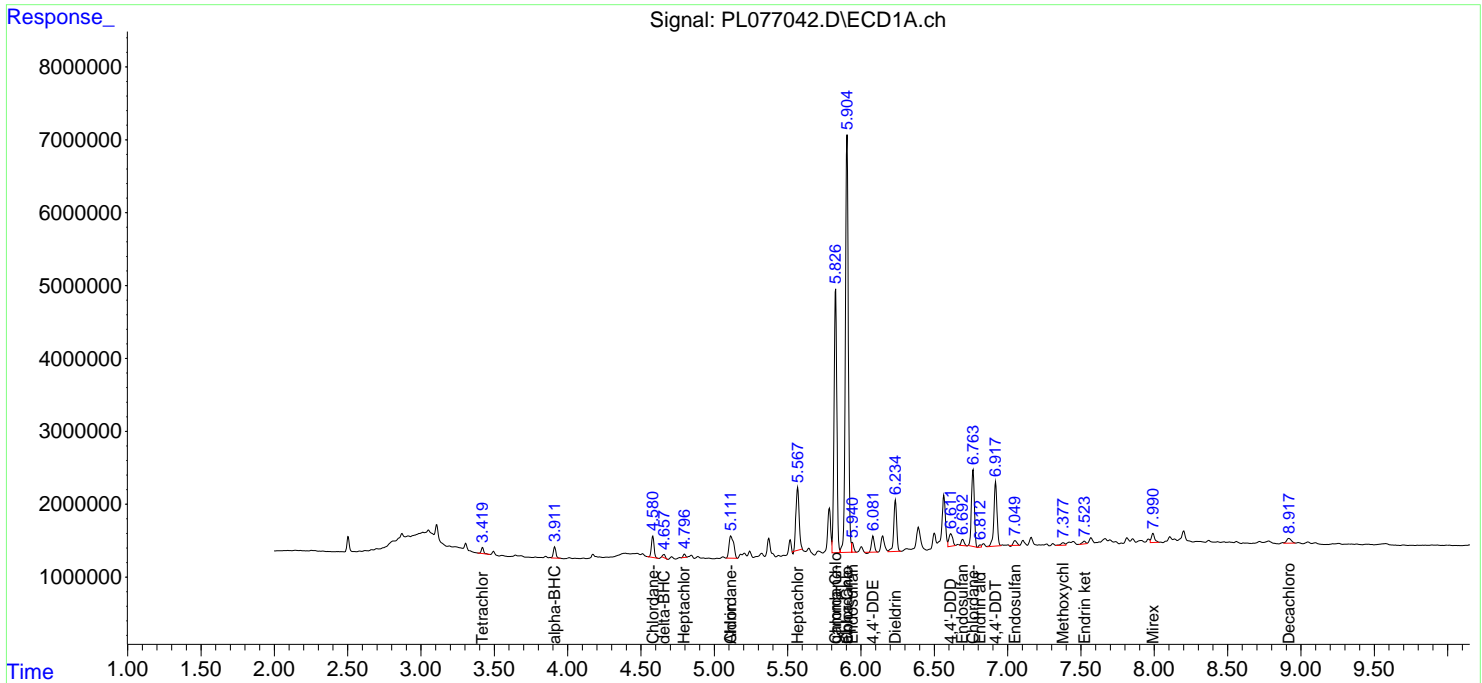
(f)=RT Delta > 1/2 Window (#)=Amounts differ by > 25% (m)=manual int.

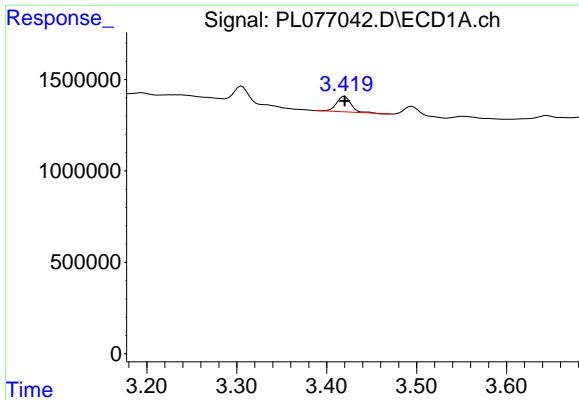
Data Path : Z:\pestpcbsrv\HPCHEM1\ECD\_L\Data\PL081122\  
 Data File : PL077042.D  
 Signal(s) : Signal #1: ECD1A.ch Signal #2: ECD2B.ch  
 Acq On : 11 Aug 2022 16:49  
 Operator : AR\AJ  
 Sample : N4143-01DL 10X  
 Misc :  
 ALS Vial : 20 Sample Multiplier: 1

Instrument :  
 ECD\_L  
 ClientSampleId :

Integration File signal 1: autoint1.e  
 Integration File signal 2: autoint2.e  
 Quant Time: Aug 11 23:17:03 2022  
 Quant Method : Z:\pestpcbsrv\HPCHEM1\ECD\_L\methods\PL080822.M  
 Quant Title : GC Extractables  
 QLast Update : Tue Aug 09 09:13:15 2022  
 Response via : Initial Calibration  
 Integrator: ChemStation

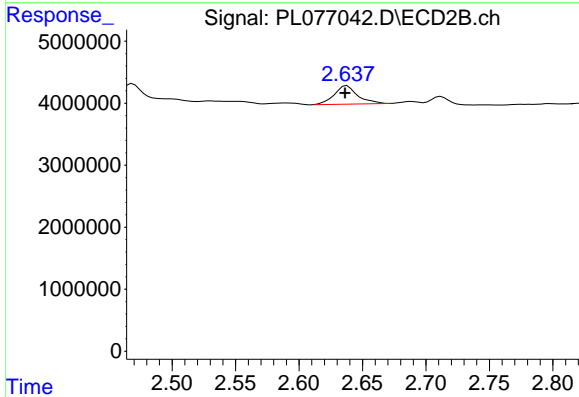
Volume Inj. : 1 µl  
 Signal #1 Phase : ZB-MR2 Signal #2 Phase: ZB-MR1  
 Signal #1 Info : 30M x 0.32mm x0.2 Signal #2 Info : 30M x 0.32mm x0.5µm



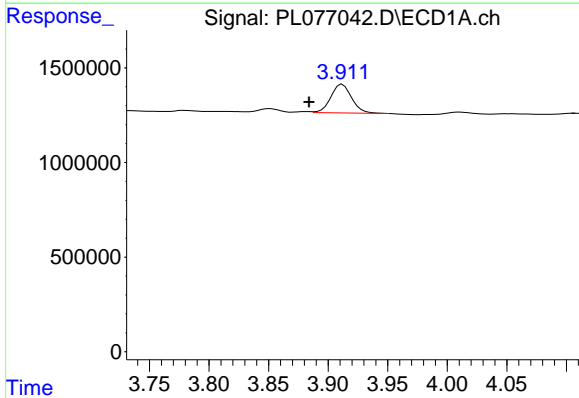


#1 Tetrachloro-m-xylene  
 R.T.: 3.420 min  
 Delta R.T.: 0.000 min  
 Response: 926698  
 Conc: 0.95 ng/ml

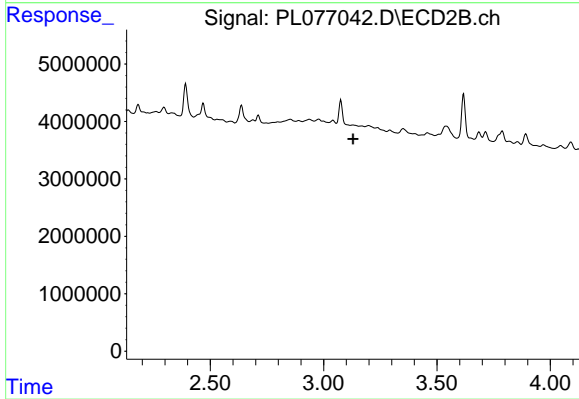
Instrument :  
 ECD\_L  
 ClientSampleId :



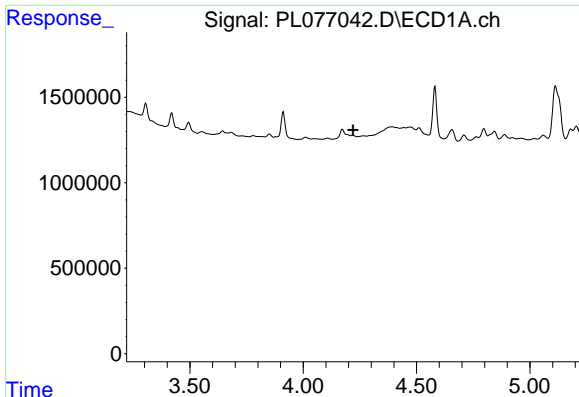
#1 Tetrachloro-m-xylene  
 R.T.: 2.638 min  
 Delta R.T.: 0.002 min  
 Response: 3798762  
 Conc: 1.33 ng/ml



#2 alpha-BHC  
 R.T.: 3.912 min  
 Delta R.T.: 0.028 min  
 Response: 1823300  
 Conc: 1.32 ng/ml



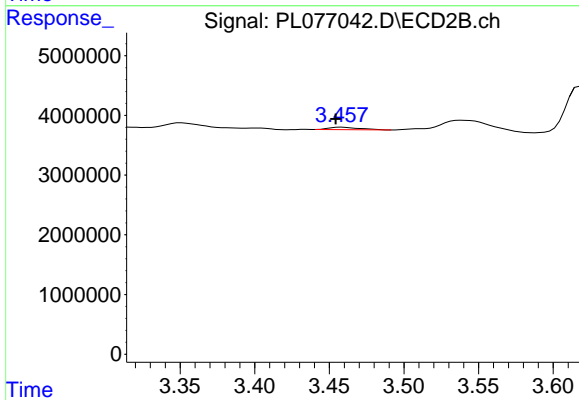
#2 alpha-BHC  
 R.T.: 0.000 min  
 Exp R.T. : 3.130 min  
 Response: 0  
 Conc: N.D.



#3 gamma-BHC (Lindane)

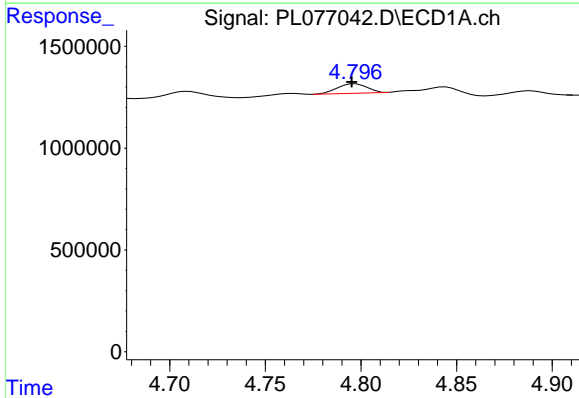
R.T.: 0.000 min  
 Exp R.T.: 4.220 min  
 Response: 0  
 Conc: N.D.

Instrument :  
 ECD\_L  
 ClientSampleId :



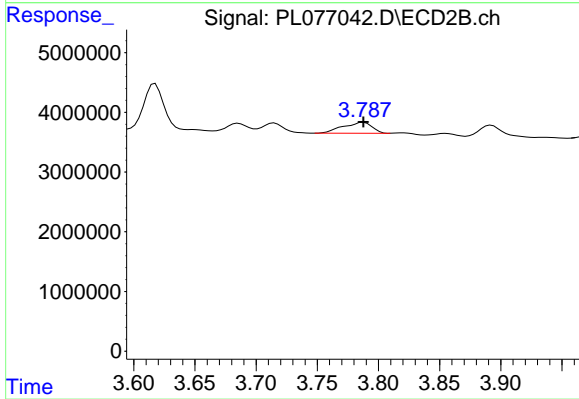
#3 gamma-BHC (Lindane)

R.T.: 3.458 min  
 Delta R.T.: 0.004 min  
 Response: 589254  
 Conc: 0.15 ng/ml



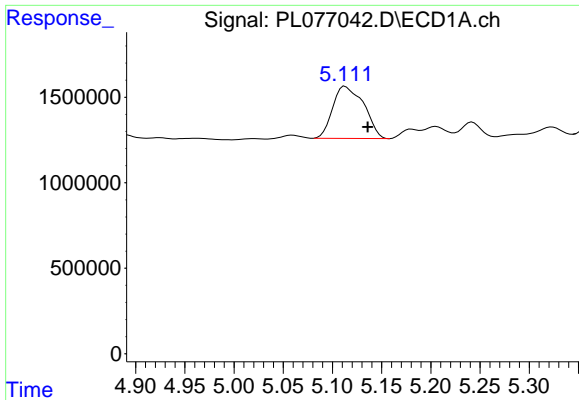
#4 Heptachlor

R.T.: 4.797 min  
 Delta R.T.: 0.002 min  
 Response: 504343  
 Conc: 0.41 ng/ml



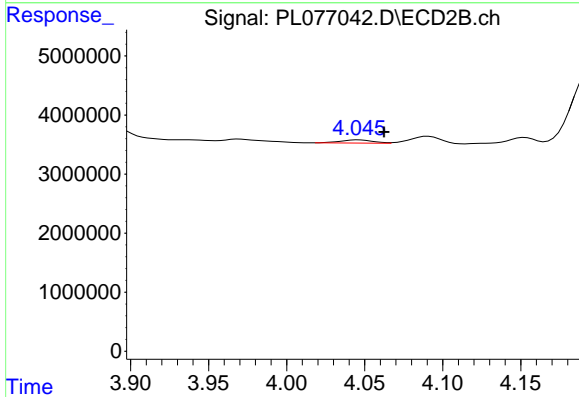
#4 Heptachlor

R.T.: 3.788 min  
 Delta R.T.: 0.000 min  
 Response: 3050393  
 Conc: 0.85 ng/ml

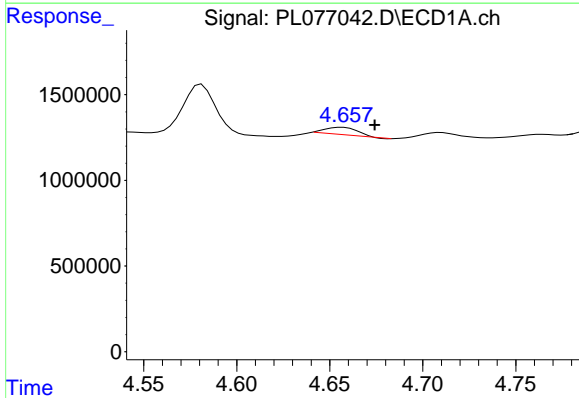


#5 Aldrin  
 R.T.: 5.113 min  
 Delta R.T.: -0.023 min  
 Response: 6694025  
 Conc: 5.90 ng/ml

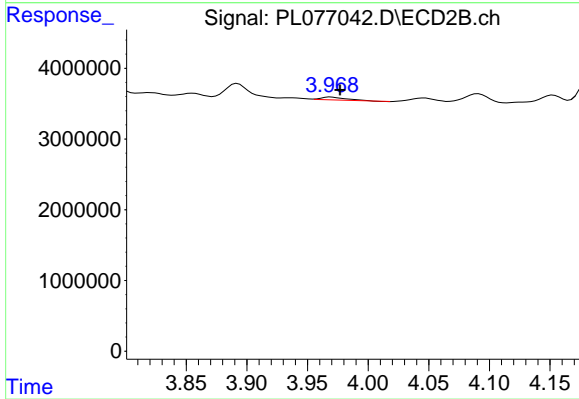
Instrument :  
 ECD\_L  
 ClientSampleId :



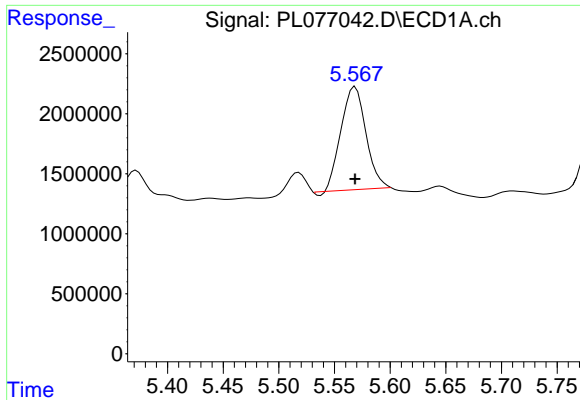
#5 Aldrin  
 R.T.: 4.046 min  
 Delta R.T.: -0.016 min  
 Response: 801766  
 Conc: 0.23 ng/ml



#7 delta-BHC  
 R.T.: 4.657 min  
 Delta R.T.: -0.017 min  
 Response: 513838  
 Conc: 0.46 ng/ml

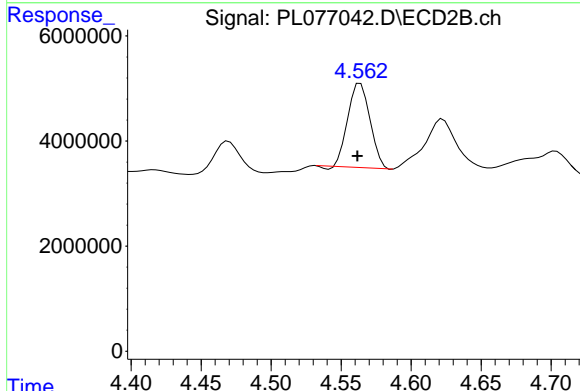


#7 delta-BHC  
 R.T.: 3.969 min  
 Delta R.T.: -0.007 min  
 Response: 585668  
 Conc: 0.15 ng/ml

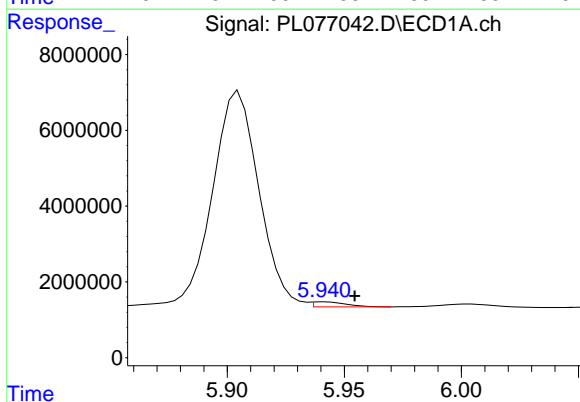


#8 Heptachlor epoxide  
 R.T.: 5.569 min  
 Delta R.T.: 0.000 min  
 Response: 13381575  
 Conc: 13.25 ng/ml

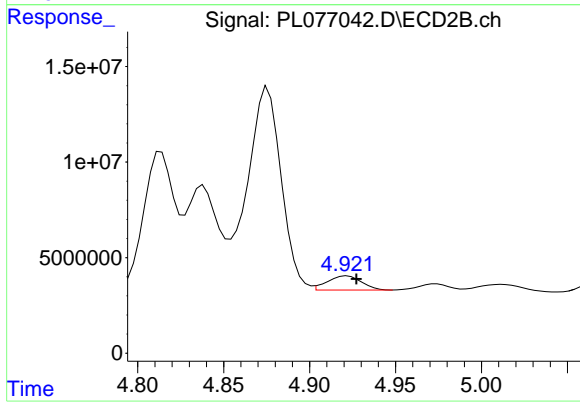
Instrument :  
 ECD\_L  
 ClientSampleId :



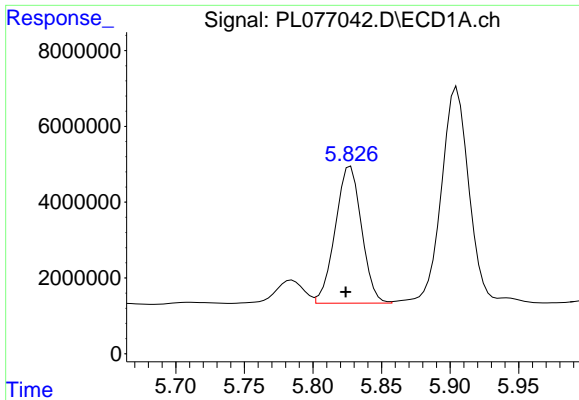
#8 Heptachlor epoxide  
 R.T.: 4.564 min  
 Delta R.T.: 0.002 min  
 Response: 17567116  
 Conc: 5.78 ng/ml



#9 Endosulfan I  
 R.T.: 5.941 min  
 Delta R.T.: -0.013 min  
 Response: 1308273  
 Conc: 1.43 ng/ml



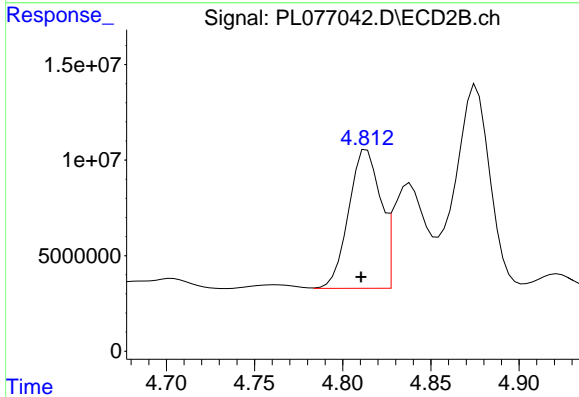
#9 Endosulfan I  
 R.T.: 4.922 min  
 Delta R.T.: -0.005 min  
 Response: 10295494  
 Conc: 3.77 ng/ml



#10 gamma-Chlordane

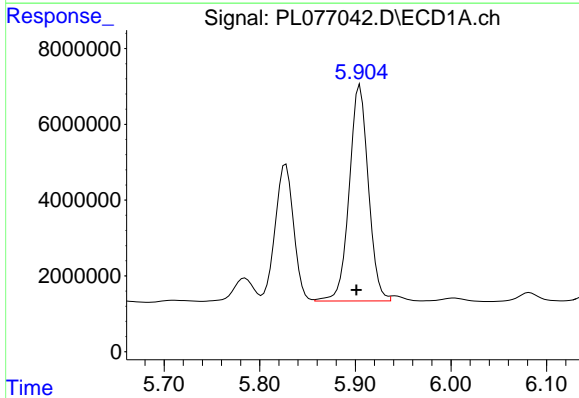
R.T.: 5.827 min  
 Delta R.T.: 0.003 min  
 Response: 48175824  
 Conc: 48.07 ng/ml

Instrument :  
 ECD\_L  
 ClientSampleId :



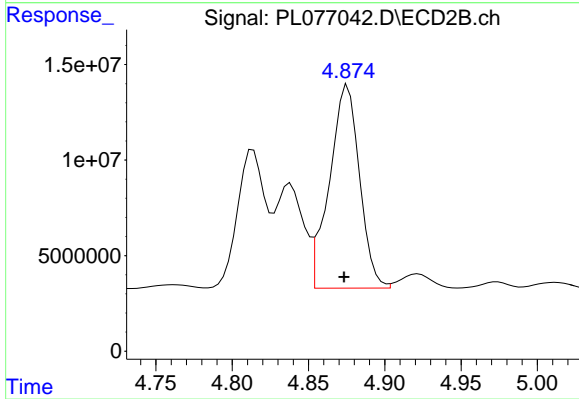
#10 gamma-Chlordane

R.T.: 4.814 min  
 Delta R.T.: 0.003 min  
 Response: 91016503  
 Conc: 29.88 ng/ml



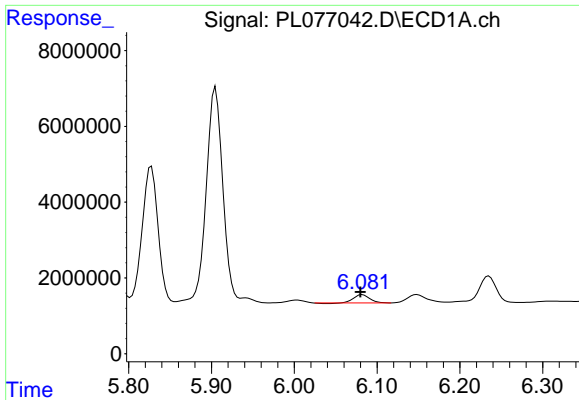
#11 alpha-Chlordane

R.T.: 5.905 min  
 Delta R.T.: 0.004 min  
 Response: 79297466  
 Conc: 79.45 ng/ml



#11 alpha-Chlordane

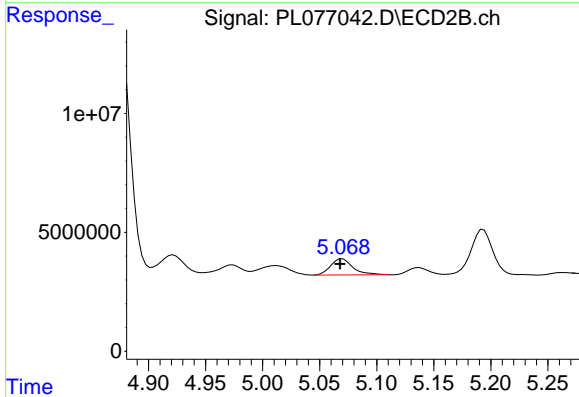
R.T.: 4.876 min  
 Delta R.T.: 0.002 min  
 Response: 146085843  
 Conc: 49.06 ng/ml



#12 4,4'-DDE

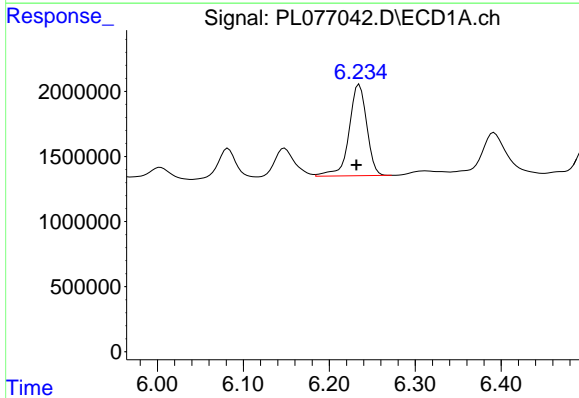
R.T.: 6.082 min  
 Delta R.T.: 0.002 min  
 Response: 2781055  
 Conc: 3.19 ng/ml

Instrument :  
 ECD\_L  
 ClientSampleId :



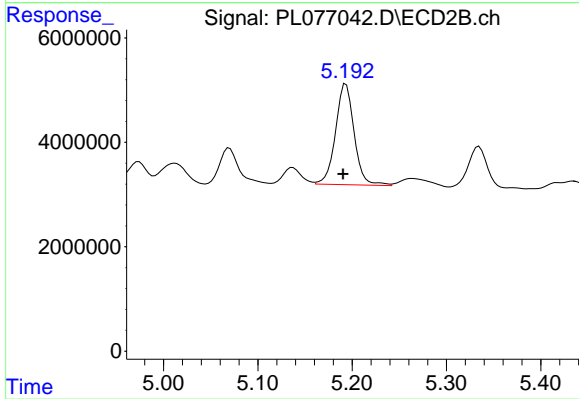
#12 4,4'-DDE

R.T.: 5.070 min  
 Delta R.T.: 0.002 min  
 Response: 8914401  
 Conc: 3.09 ng/ml



#13 Dieldrin

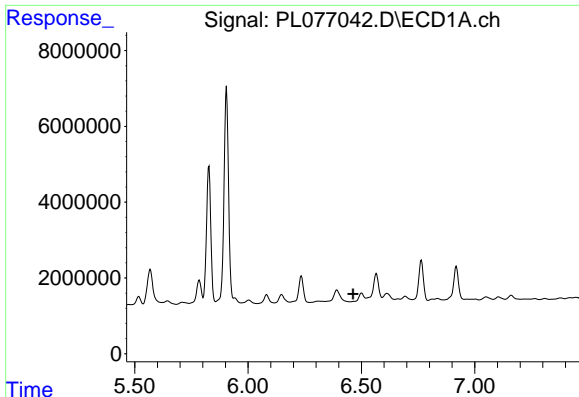
R.T.: 6.235 min  
 Delta R.T.: 0.003 min  
 Response: 10059530  
 Conc: 10.36 ng/ml



#13 Dieldrin

R.T.: 5.193 min  
 Delta R.T.: 0.003 min  
 Response: 26574197  
 Conc: 8.86 ng/ml

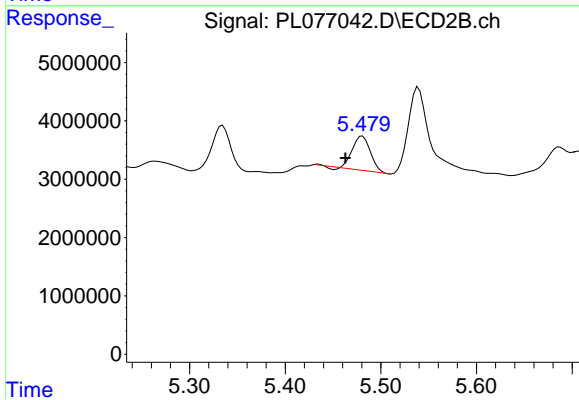




#14 Endrin

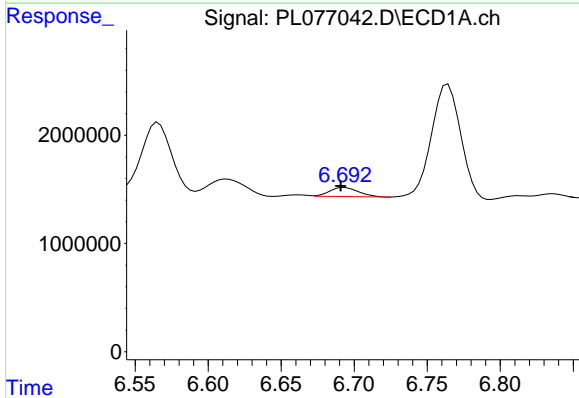
R.T.: 0.000 min  
 Exp R.T.: 6.463 min  
 Response: 0  
 Conc: N.D.

Instrument :  
 ECD\_L  
 ClientSampleId :



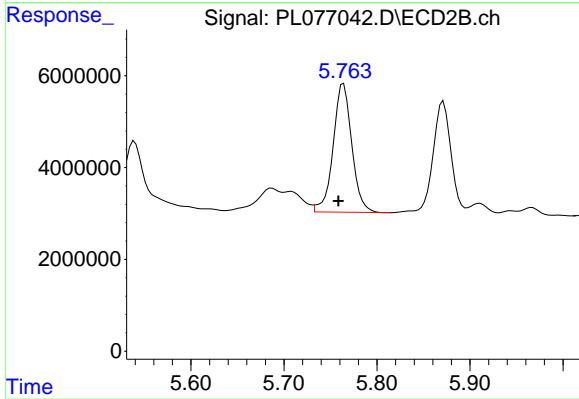
#14 Endrin

R.T.: 5.481 min  
 Delta R.T.: 0.018 min  
 Response: 7619794  
 Conc: 3.00 ng/ml



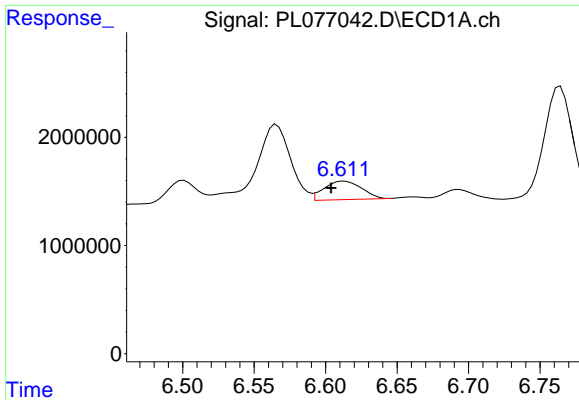
#15 Endosulfan II

R.T.: 6.693 min  
 Delta R.T.: 0.003 min  
 Response: 1163773  
 Conc: 1.36 ng/ml



#15 Endosulfan II

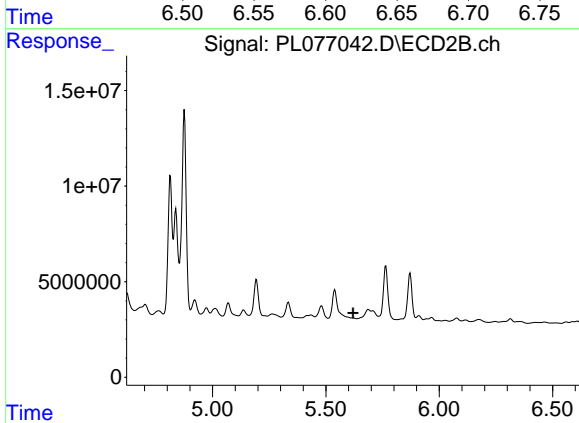
R.T.: 5.764 min  
 Delta R.T.: 0.005 min  
 Response: 39062140  
 Conc: 14.91 ng/ml



#16 4,4'-DDD

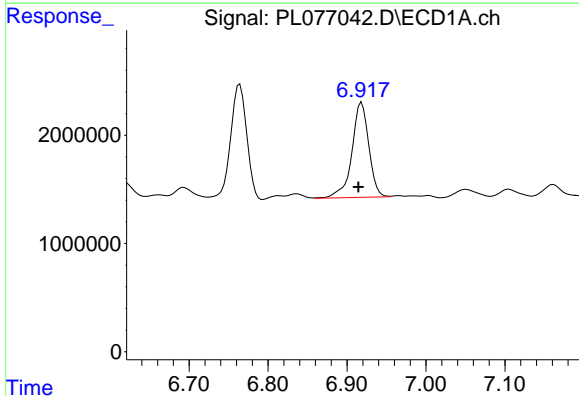
R.T.: 6.613 min  
 Delta R.T.: 0.009 min  
 Response: 3109363  
 Conc: 4.08 ng/ml

Instrument :  
 ECD\_L  
 ClientSampleId :



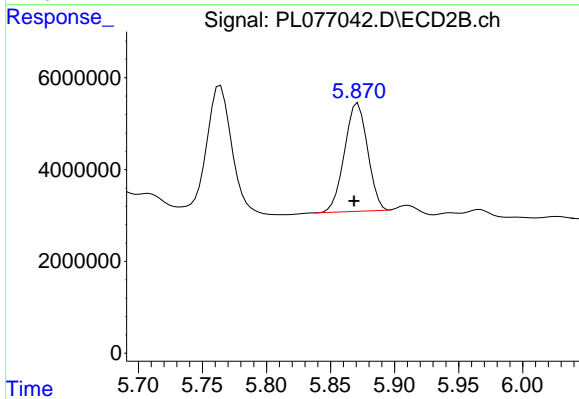
#16 4,4'-DDD

R.T.: 0.000 min  
 Exp R.T. : 5.620 min  
 Response: 0  
 Conc: N.D.



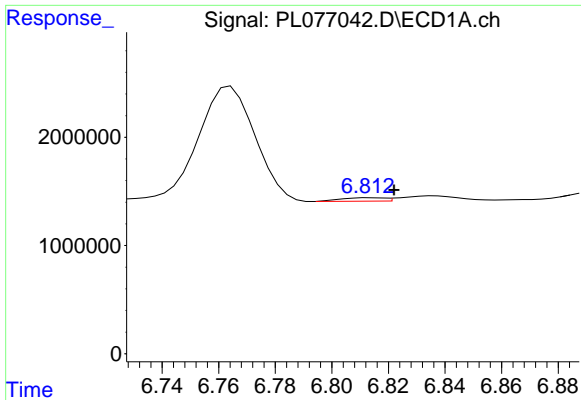
#17 4,4'-DDT

R.T.: 6.919 min  
 Delta R.T.: 0.004 min  
 Response: 13039170  
 Conc: 16.97 ng/ml



#17 4,4'-DDT

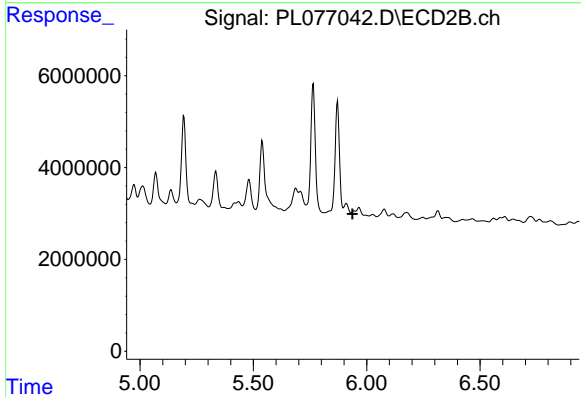
R.T.: 5.871 min  
 Delta R.T.: 0.003 min  
 Response: 29549000  
 Conc: 13.04 ng/ml



#18 Endrin aldehyde

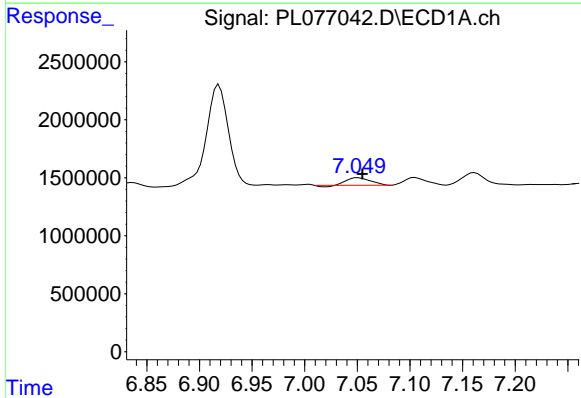
R.T.: 6.813 min  
 Delta R.T.: -0.009 min  
 Response: 339198  
 Conc: 0.47 ng/ml

Instrument :  
 ECD\_L  
 ClientSampleId :



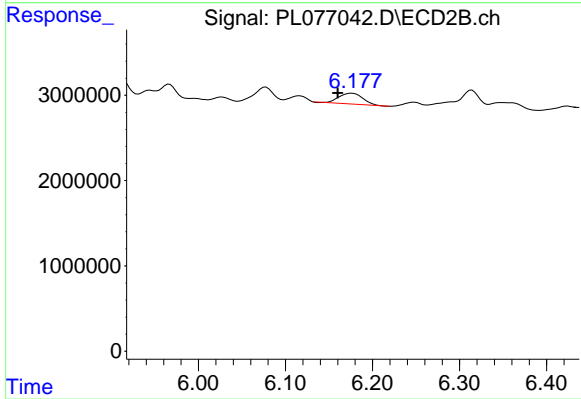
#18 Endrin aldehyde

R.T.: 5.945 min  
 Delta R.T.: 0.007 min  
 Response: -1110096  
 Conc: N.D.



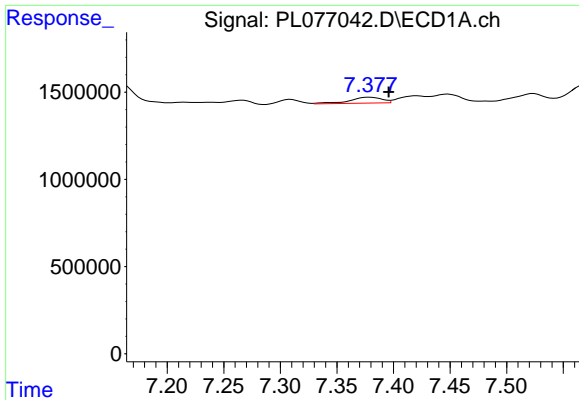
#19 Endosulfan Sulfate

R.T.: 7.051 min  
 Delta R.T.: -0.004 min  
 Response: 955592  
 Conc: 1.16 ng/ml



#19 Endosulfan Sulfate

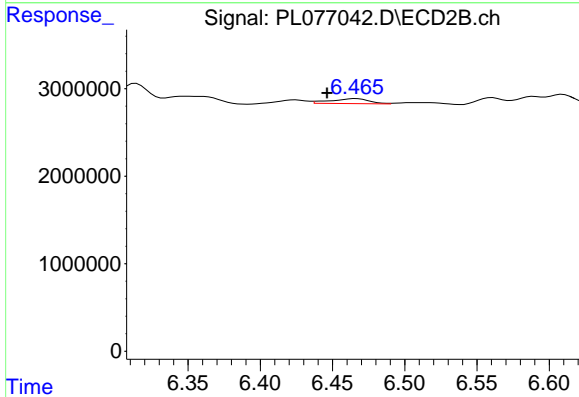
R.T.: 6.176 min  
 Delta R.T.: 0.016 min  
 Response: 2381391  
 Conc: 1.03 ng/ml



#20 Methoxychlor

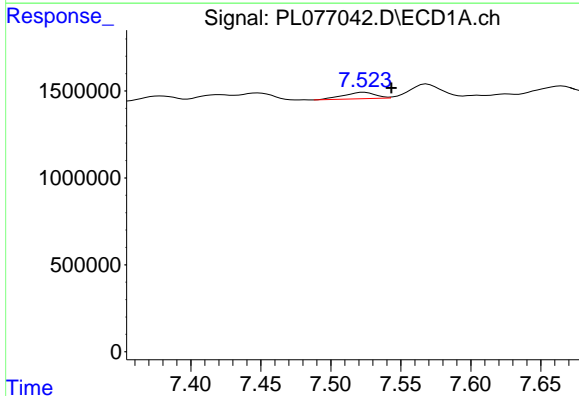
R.T.: 7.379 min  
 Delta R.T.: -0.017 min  
 Response: 663892  
 Conc: 1.50 ng/ml

Instrument :  
 ECD\_L  
 ClientSampleId :



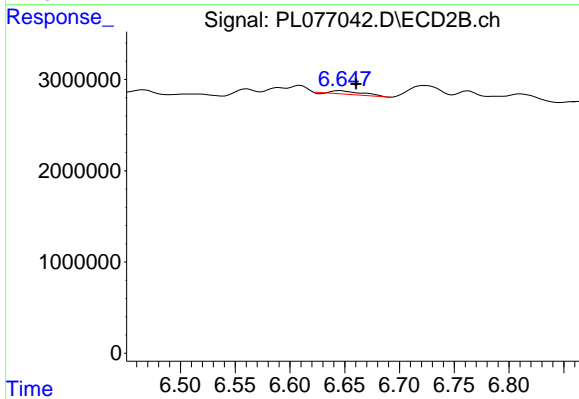
#20 Methoxychlor

R.T.: 6.467 min  
 Delta R.T.: 0.020 min  
 Response: 1066733  
 Conc: 0.89 ng/ml



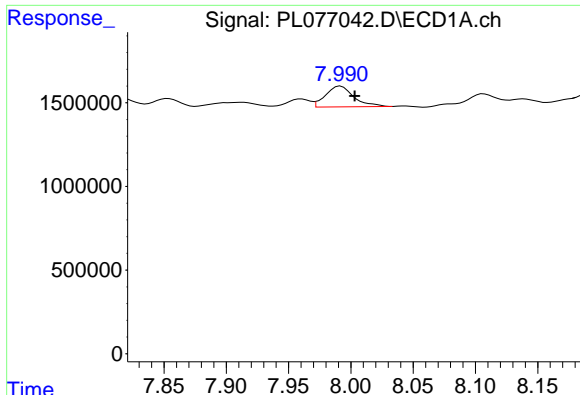
#21 Endrin ketone

R.T.: 7.524 min  
 Delta R.T.: -0.019 min  
 Response: 585104  
 Conc: 0.65 ng/ml



#21 Endrin ketone

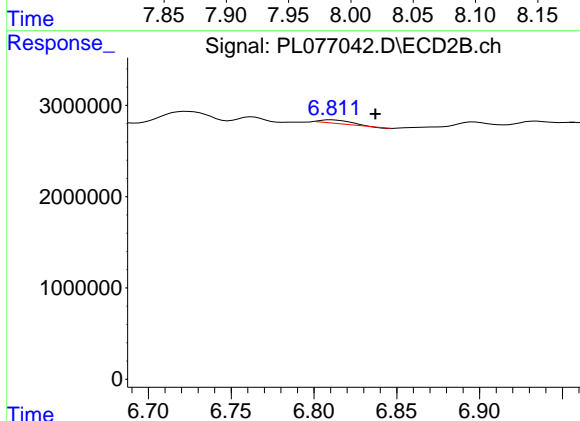
R.T.: 6.646 min  
 Delta R.T.: -0.015 min  
 Response: 698717  
 Conc: 0.27 ng/ml



#22 Mirex

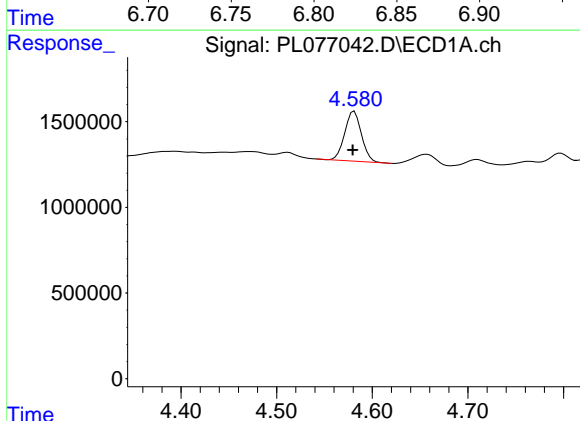
R.T.: 7.992 min  
 Delta R.T.: -0.011 min  
 Response: 1951909  
 Conc: 2.78 ng/ml

Instrument :  
 ECD\_L  
 ClientSampleId :



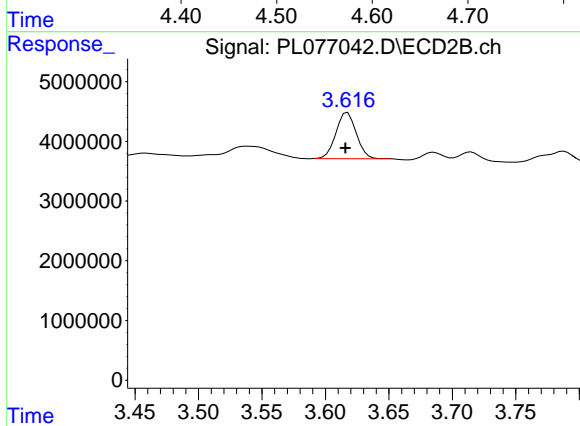
#22 Mirex

R.T.: 6.811 min  
 Delta R.T.: -0.027 min  
 Response: 495784  
 Conc: 0.26 ng/ml



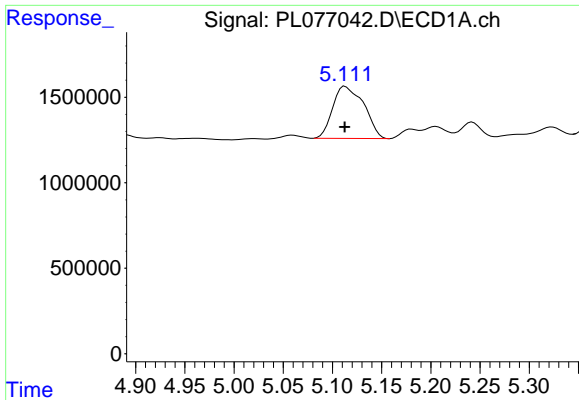
#23 Chlordane-1

R.T.: 4.581 min  
 Delta R.T.: 0.002 min  
 Response: 3528390  
 Conc: 93.60 ng/ml



#23 Chlordane-1

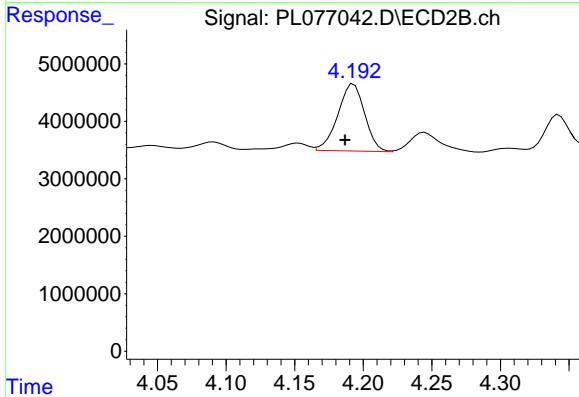
R.T.: 3.618 min  
 Delta R.T.: 0.002 min  
 Response: 8638526  
 Conc: 88.70 ng/ml



#24 Chlordane-2

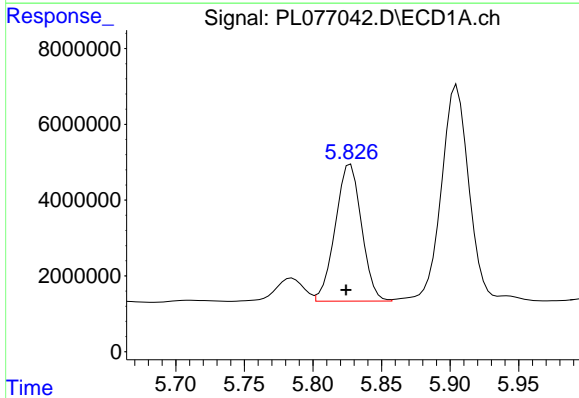
R.T.: 5.113 min  
 Delta R.T.: 0.000 min  
 Response: 6694025  
 Conc: 168.44 ng/ml

Instrument :  
 ECD\_L  
 ClientSampleId :



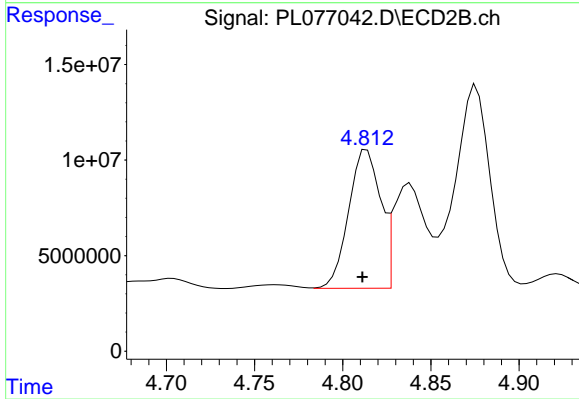
#24 Chlordane-2

R.T.: 4.193 min  
 Delta R.T.: 0.006 min  
 Response: 15912362  
 Conc: 138.35 ng/ml



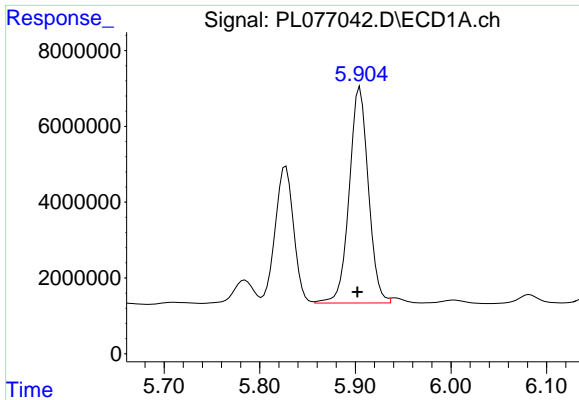
#25 Chlordane-3

R.T.: 5.827 min  
 Delta R.T.: 0.003 min  
 Response: 48175824  
 Conc: 331.40 ng/ml



#25 Chlordane-3

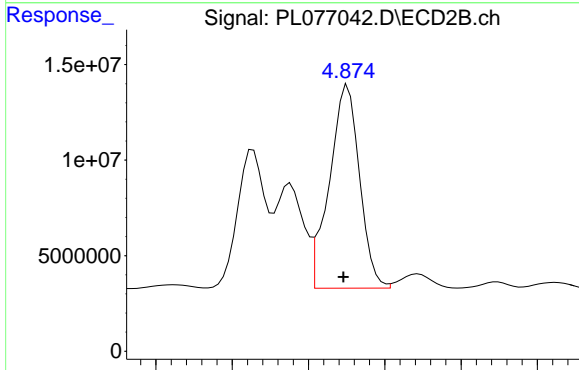
R.T.: 4.814 min  
 Delta R.T.: 0.003 min  
 Response: 91016503  
 Conc: 287.48 ng/ml



#26 Chlordane-4

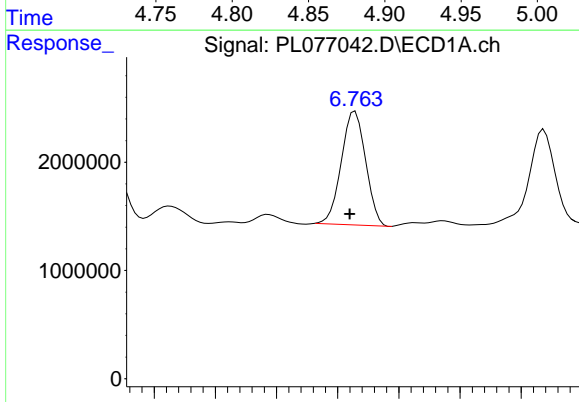
R.T.: 5.905 min  
Delta R.T.: 0.003 min  
Response: 79297466  
Conc: 449.17 ng/ml

Instrument :  
ECD\_L  
ClientSampleId :



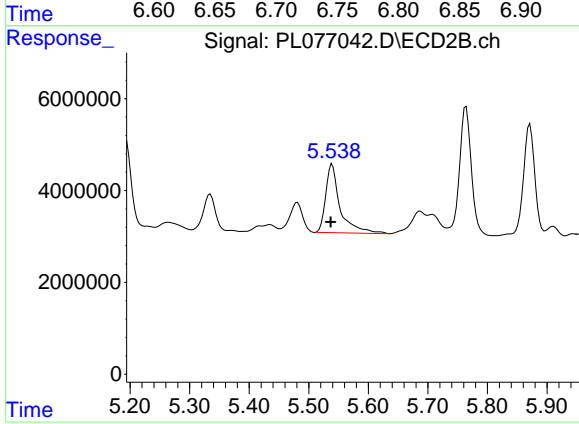
#26 Chlordane-4

R.T.: 4.876 min  
Delta R.T.: 0.003 min  
Response: 146085843  
Conc: 443.54 ng/ml



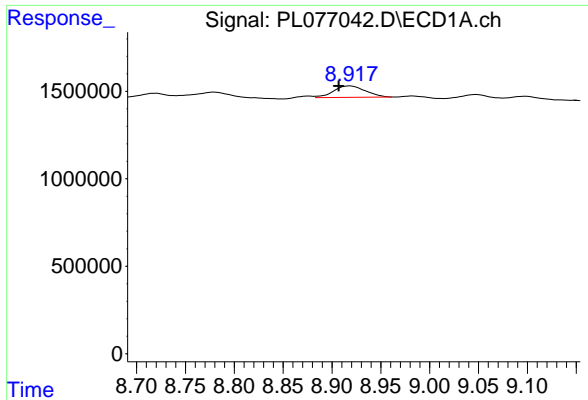
#27 Chlordane-5

R.T.: 6.764 min  
Delta R.T.: 0.004 min  
Response: 14533761  
Conc: 479.68 ng/ml



#27 Chlordane-5

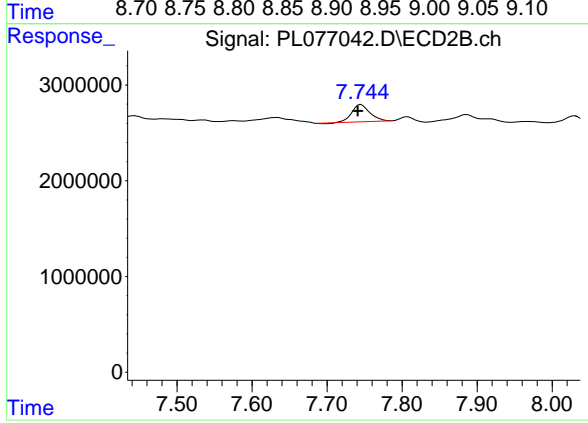
R.T.: 5.539 min  
Delta R.T.: 0.002 min  
Response: 25036113  
Conc: 274.56 ng/ml



#28 Decachlorobiphenyl

R.T.: 8.919 min  
 Delta R.T.: 0.012 min  
 Response: 1482392  
 Conc: 1.96 ng/ml

Instrument :  
 ECD\_L  
 ClientSampleId :



#28 Decachlorobiphenyl

R.T.: 7.745 min  
 Delta R.T.: 0.004 min  
 Response: 2973169  
 Conc: 1.32 ng/ml