

Data Path : Z:\pestpcbsrv\HPCHEM1\ECD_L\Data\PL081219\
 Data File : PL051348.D
 Signal(s) : Signal #1: ECD1A.ch Signal #2: ECD2B.ch
 Acq On : 13 Aug 2019 00:48
 Operator : SM\AJ
 Sample : K4277-09
 Misc :
 ALS Vial : 39 Sample Multiplier: 1

Instrument :
 ECD_L
 ClientSampleId :
 TP-22

Integration File signal 1: autoint1.e
 Integration File signal 2: autoint2.e
 Quant Time: Aug 13 04:55:14 2019
 Quant Method : Z:\pestpcbsrv\HPCHEM1\ECD_L\methods\PL071719.M
 Quant Title : GC Extractables
 QLast Update : Fri Jul 19 01:19:13 2019
 Response via : Initial Calibration
 Integrator: ChemStation

Volume Inj. : 1 µl
 Signal #1 Phase : ZB-MR2 Signal #2 Phase: ZB-MR1
 Signal #1 Info : 30M x 0.32mm x0.2 Signal #2 Info : 30M x 0.32mm x0.5µm

	Compound	RT#1	RT#2	Resp#1	Resp#2	ng/ml	ng/ml

System Monitoring Compounds							
1)	SA Tetrachlo...	3.316	3.927	152.9E6	35552874	15.218	12.461
28)	SA Decachlor...	7.977	8.957	108.6E6	29067015	10.729	10.279
Target Compounds							
3)	MA gamma-BHC...	4.025	4.580f	15476156	25661612	1.006	6.625 #
5)	MB Aldrin	4.536	0.000	12837418	0	0.829	N.D. #
6)	B beta-BHC	0.000	4.793	0	7911240	N.D.	4.576 #
8)	B Heptachlo...	0.000	5.803	0	3784588	N.D.	0.989 #
9)	A Endosulfan I	5.336f	0.000	120.7E6	0	8.300	N.D. #
10)	B gamma-Chl...	5.190	6.015	53539247	4434641	3.392	1.200 #
11)	B alpha-Chl...	0.000	6.094	0	1221994	N.D.	0.333 #
13)	MA Dieldrin	5.556	0.000	124.9E6	0	8.059	N.D. #
14)	MA Endrin	5.800	0.000	40491944	0	2.751	N.D. #
15)	B Endosulfa...	6.083	6.846	9107854	5372642	0.651	1.690 #
16)	A 4,4'-DDD	5.923	6.741	11647152	8294164	0.972	3.115 #
17)	MA 4,4'-DDT	6.164	0.000	10160486	0	0.820	N.D. #
18)	B Endrin al...	6.213f	0.000	7819573	0	0.678	N.D. #
19)	B Endosulfa...	6.471f	0.000	11804542	0	0.927	N.D. #
20)	A Methoxychlor	0.000	7.481f	0	9255317	N.D.	6.308 #
23)	Chlordane-1	4.163	0.000	21082107	0	57.296	N.D. #
24)	Chlordane-2	4.624f	0.000	8281830	0	18.503	N.D. #
25)	Chlordane-3	5.190	6.015	53539247	4434641	38.248	9.220 #
26)	Chlordane-4	0.000	6.094	0	1221994	N.D.	2.104 #
27)	Chlordane-5	6.083	0.000	9107854	0	17.931	N.D. #

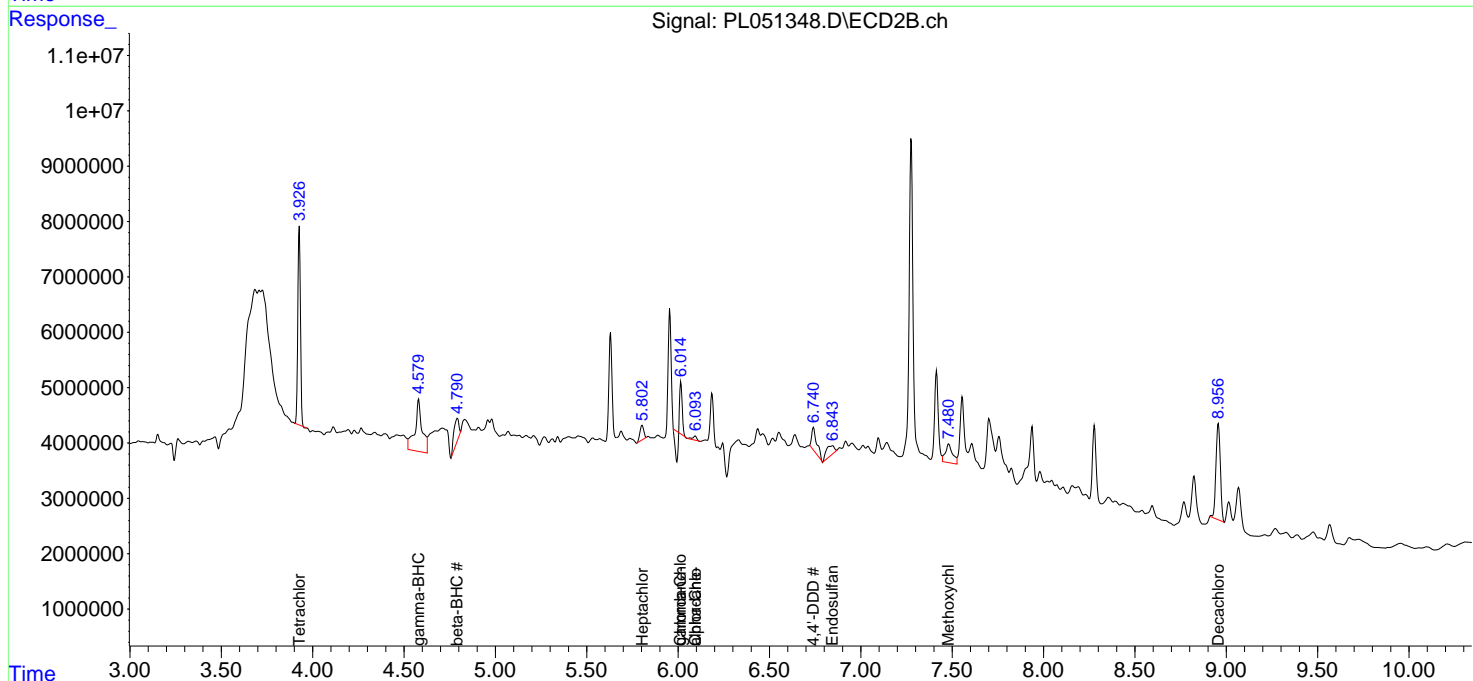
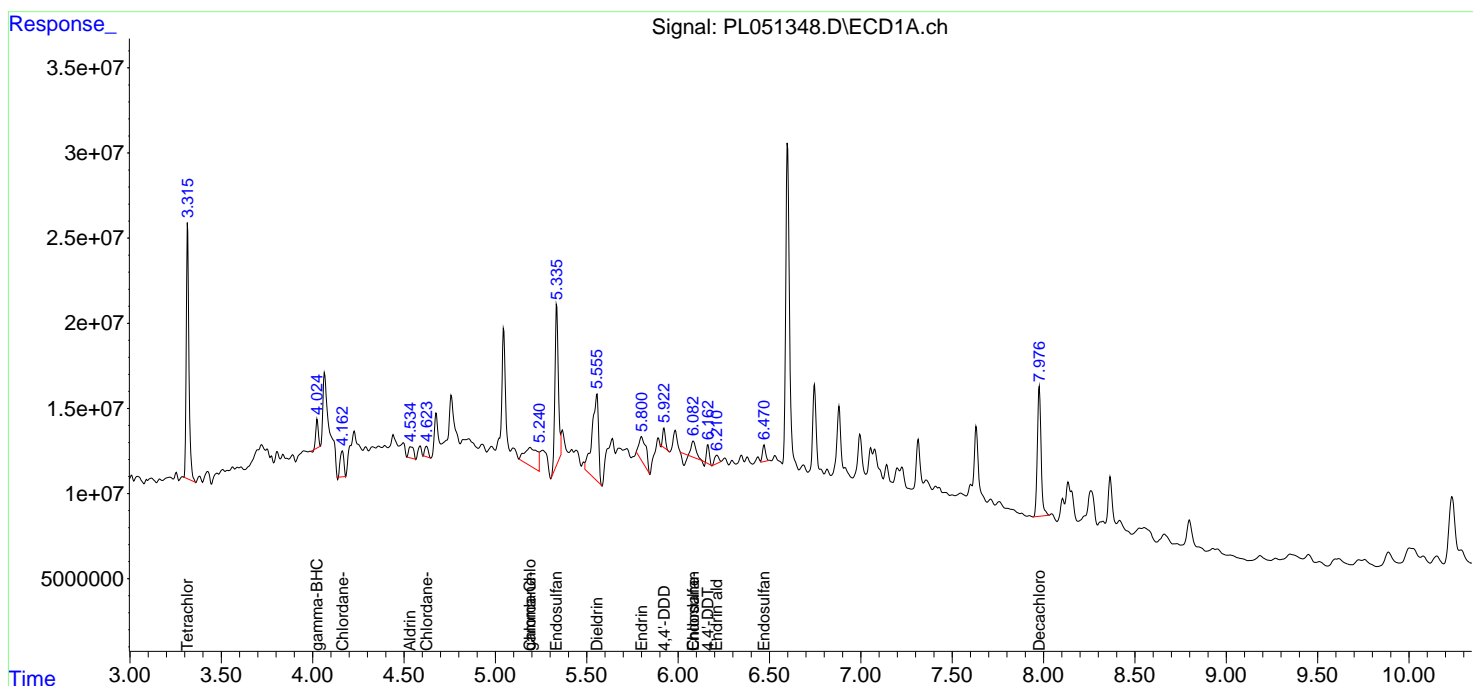
(f)=RT Delta > 1/2 Window (#)=Amounts differ by > 25% (m)=manual int.

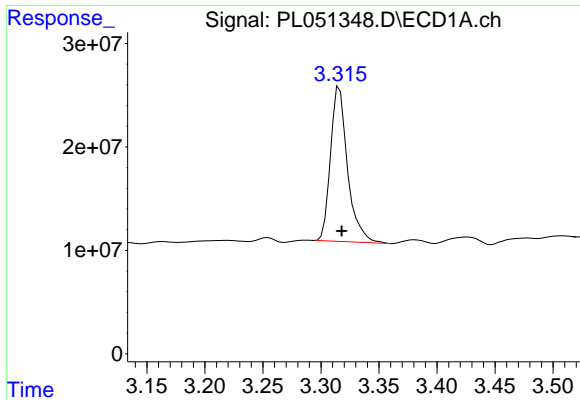
Data Path : Z:\pestpcbsrv\HPCHEM1\ECD_L\Data\PL081219\
 Data File : PL051348.D
 Signal(s) : Signal #1: ECD1A.ch Signal #2: ECD2B.ch
 Acq On : 13 Aug 2019 00:48
 Operator : SM\AJ
 Sample : K4277-09
 Misc :
 ALS Vial : 39 Sample Multiplier: 1

Instrument :
 ECD_L
 ClientSampled :
 TP-22

Integration File signal 1: autoint1.e
 Integration File signal 2: autoint2.e
 Quant Time: Aug 13 04:55:14 2019
 Quant Method : Z:\pestpcbsrv\HPCHEM1\ECD_L\methods\PL071719.M
 Quant Title : GC Extractables
 QLast Update : Fri Jul 19 01:19:13 2019
 Response via : Initial Calibration
 Integrator: ChemStation

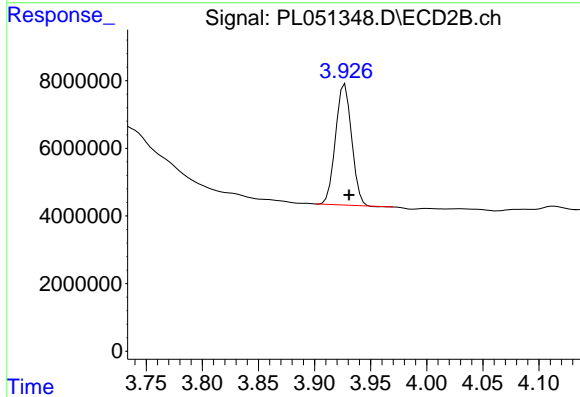
Volume Inj. : 1 µl
 Signal #1 Phase : ZB-MR2 Signal #2 Phase: ZB-MR1
 Signal #1 Info : 30M x 0.32mm x0.2 Signal #2 Info : 30M x 0.32mm x0.5µm



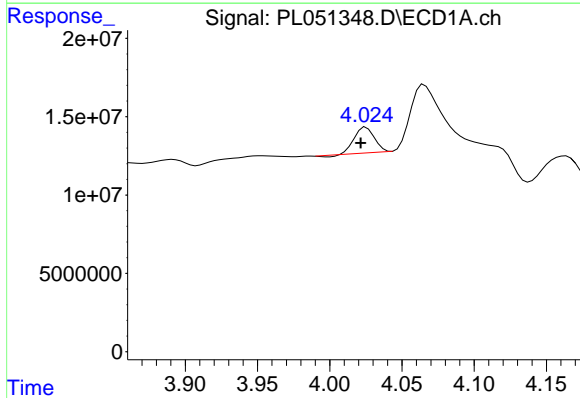


#1 Tetrachloro-m-xylene
 R.T.: 3.316 min
 Delta R.T.: -0.002 min
 Response: 152905852
 Conc: 15.22 ng/ml

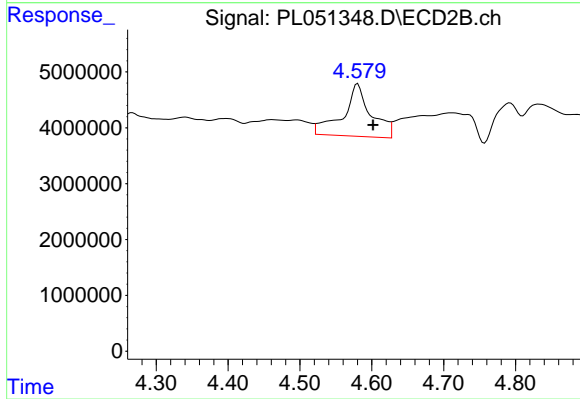
Instrument :
 ECD_L
 ClientSampleId :
 TP-22



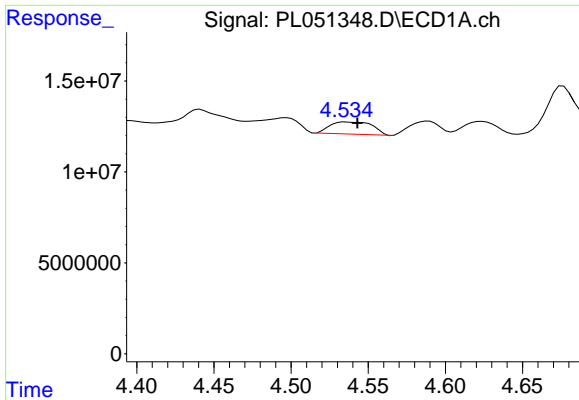
#1 Tetrachloro-m-xylene
 R.T.: 3.927 min
 Delta R.T.: -0.003 min
 Response: 35552874
 Conc: 12.46 ng/ml



#3 gamma-BHC (Lindane)
 R.T.: 4.025 min
 Delta R.T.: 0.004 min
 Response: 15476156
 Conc: 1.01 ng/ml

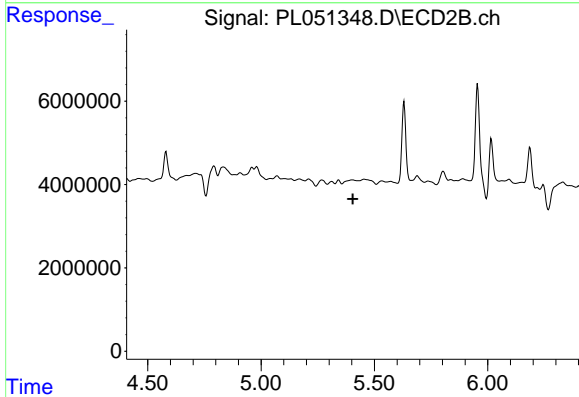


#3 gamma-BHC (Lindane)
 R.T.: 4.580 min
 Delta R.T.: -0.021 min
 Response: 25661612
 Conc: 6.63 ng/ml

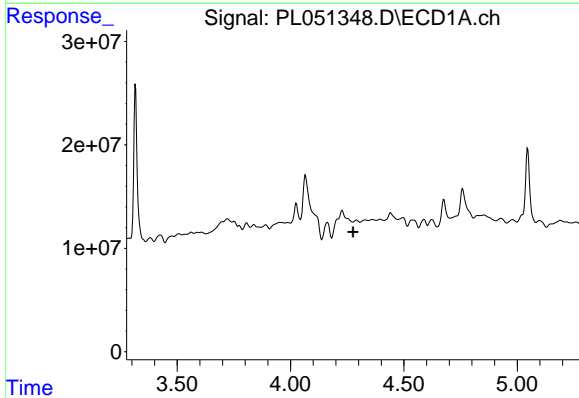


#5 Aldrin
 R.T.: 4.536 min
 Delta R.T.: -0.007 min
 Response: 12837418
 Conc: 0.83 ng/ml

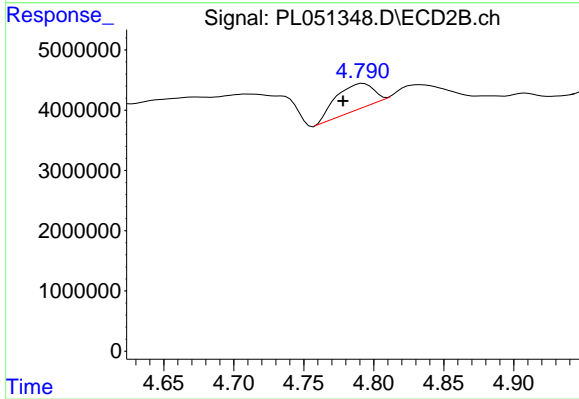
Instrument :
 ECD_L
 ClientSampled :
 TP-22



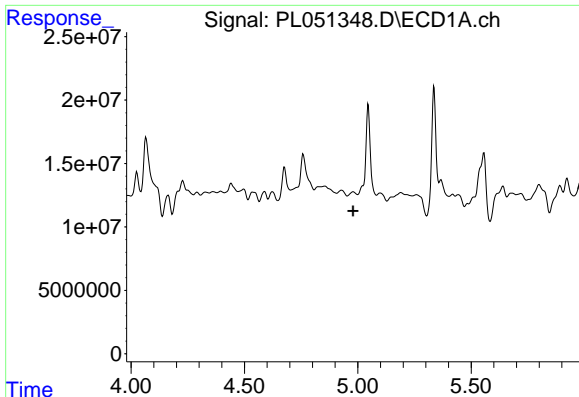
#5 Aldrin
 R.T.: 0.000 min
 Exp R.T. : 5.405 min
 Response: 0
 Conc: N.D.



#6 beta-BHC
 R.T.: 0.000 min
 Exp R.T. : 4.276 min
 Response: 0
 Conc: N.D.



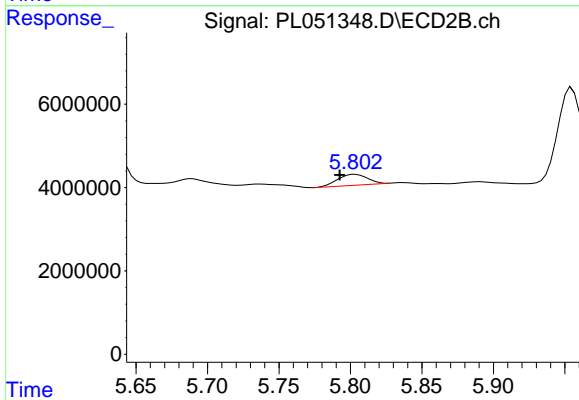
#6 beta-BHC
 R.T.: 4.793 min
 Delta R.T.: 0.014 min
 Response: 7911240
 Conc: 4.58 ng/ml



#8 Heptachlor epoxide

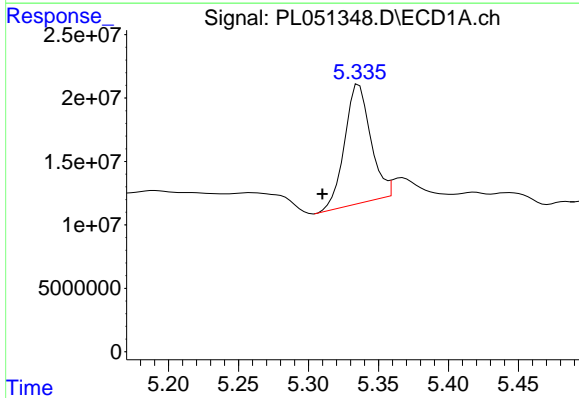
R.T.: 0.000 min
 Exp R.T.: 4.979 min
 Response: 0
 Conc: N.D.

Instrument :
 ECD_L
 ClientSampled :
 TP-22



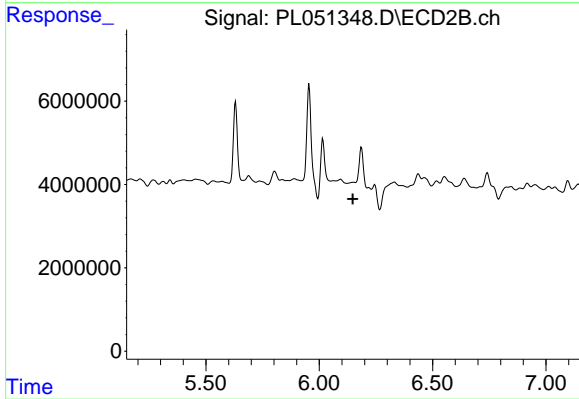
#8 Heptachlor epoxide

R.T.: 5.803 min
 Delta R.T.: 0.011 min
 Response: 3784588
 Conc: 0.99 ng/ml



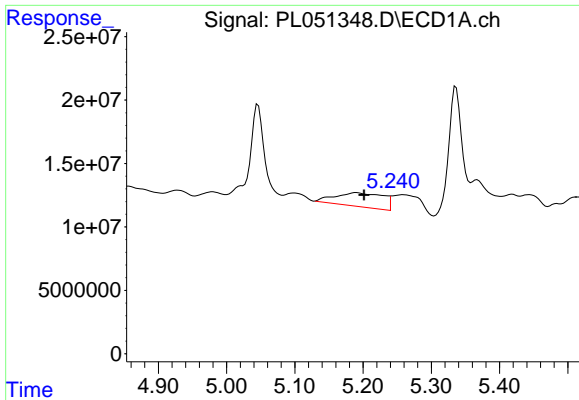
#9 Endosulfan I

R.T.: 5.336 min
 Delta R.T.: 0.026 min
 Response: 120714456
 Conc: 8.30 ng/ml



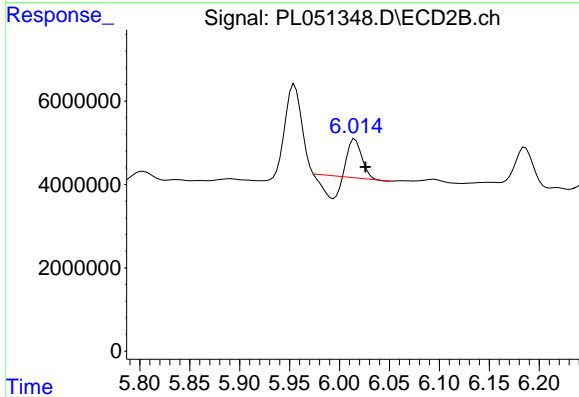
#9 Endosulfan I

R.T.: 0.000 min
 Exp R.T.: 6.148 min
 Response: 0
 Conc: N.D.

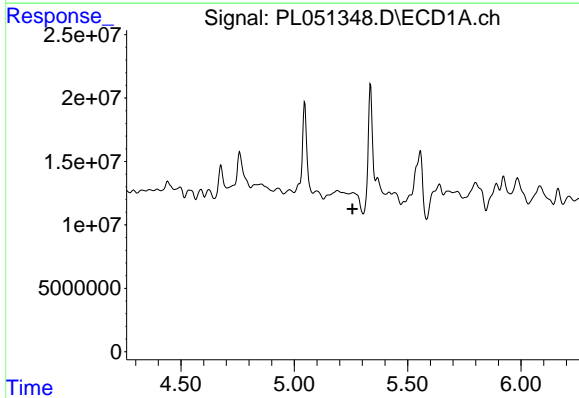


#10 gamma-Chlordane
 R.T.: 5.190 min
 Delta R.T.: -0.011 min
 Response: 53539247
 Conc: 3.39 ng/ml

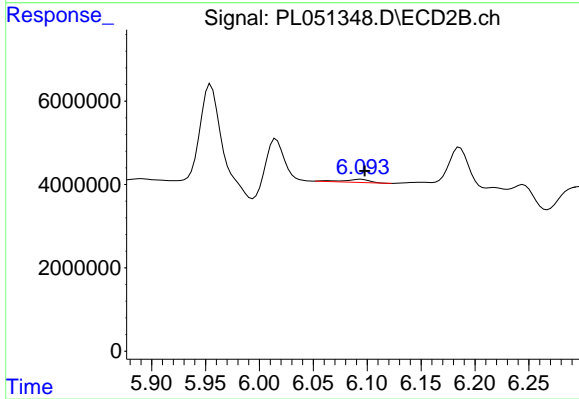
Instrument :
 ECD_L
 ClientSampled :
 TP-22



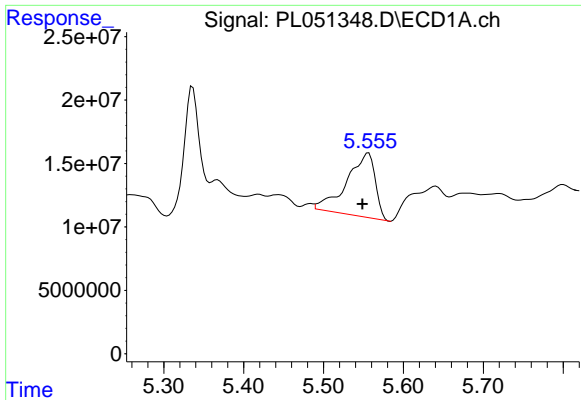
#10 gamma-Chlordane
 R.T.: 6.015 min
 Delta R.T.: -0.011 min
 Response: 4434641
 Conc: 1.20 ng/ml



#11 alpha-Chlordane
 R.T.: 0.000 min
 Exp R.T. : 5.257 min
 Response: 0
 Conc: N.D.

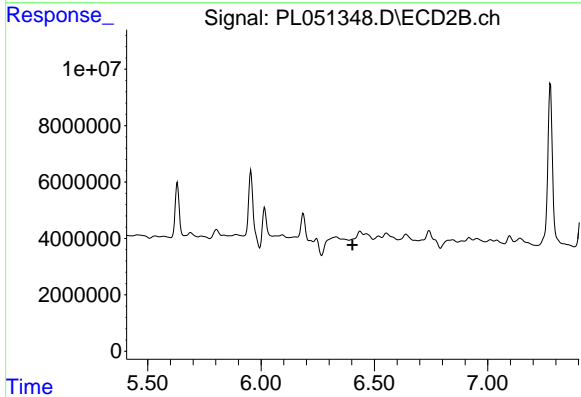


#11 alpha-Chlordane
 R.T.: 6.094 min
 Delta R.T.: -0.004 min
 Response: 1221994
 Conc: 0.33 ng/ml

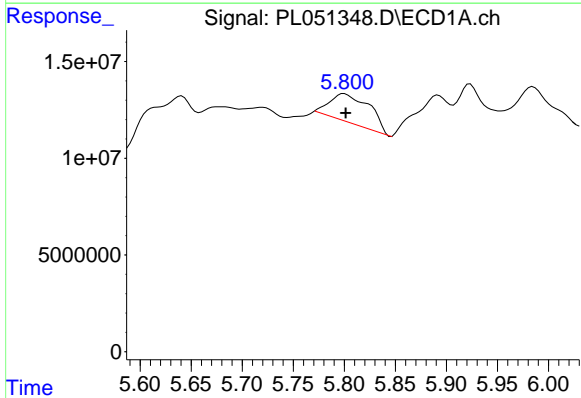


#13 Dieldrin
 R.T.: 5.556 min
 Delta R.T.: 0.008 min
 Response: 124893164
 Conc: 8.06 ng/ml

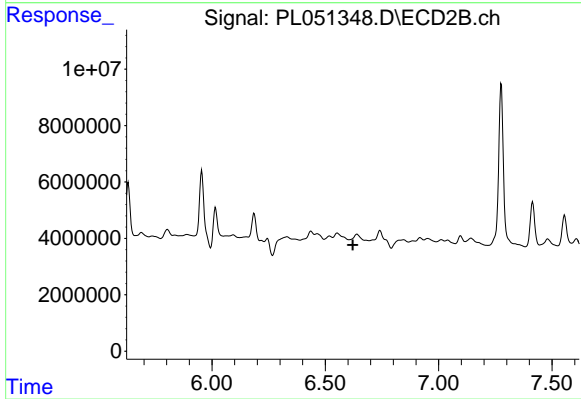
Instrument :
 ECD_L
 ClientSampled :
 TP-22



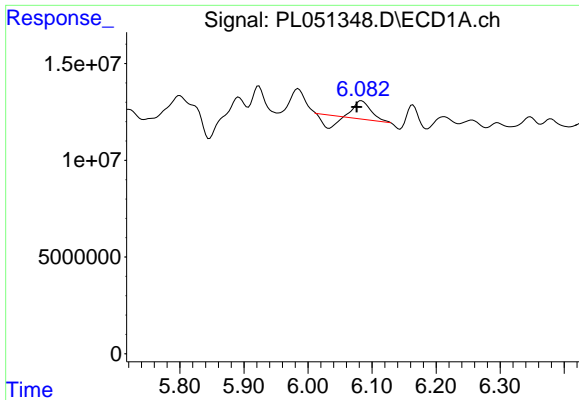
#13 Dieldrin
 R.T.: 0.000 min
 Exp R.T. : 6.404 min
 Response: 0
 Conc: N.D.



#14 Endrin
 R.T.: 5.800 min
 Delta R.T.: -0.001 min
 Response: 40491944
 Conc: 2.75 ng/ml

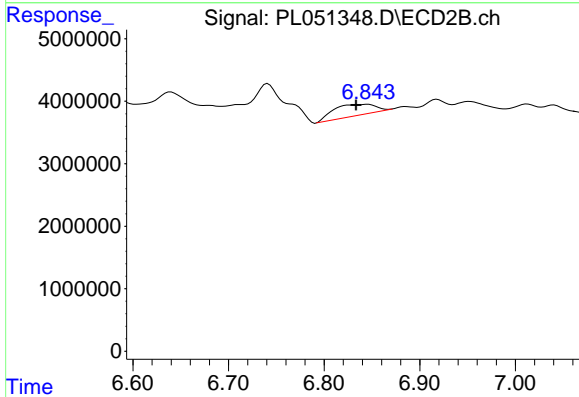


#14 Endrin
 R.T.: 0.000 min
 Exp R.T. : 6.621 min
 Response: 0
 Conc: N.D.

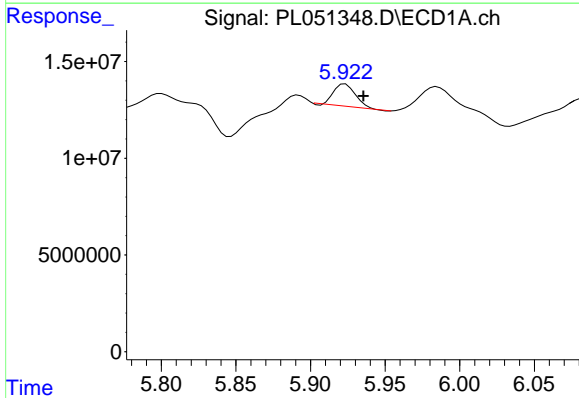


#15 Endosulfan II
 R.T.: 6.083 min
 Delta R.T.: 0.007 min
 Response: 9107854
 Conc: 0.65 ng/ml

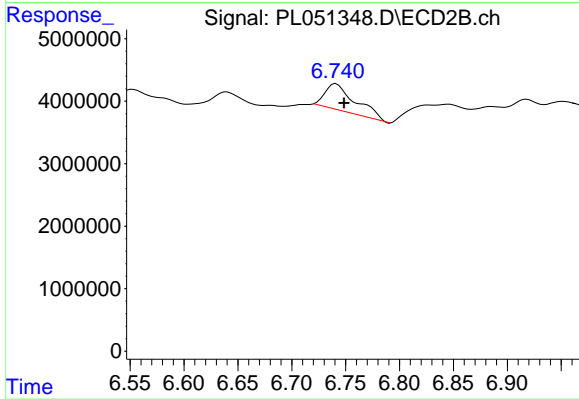
Instrument :
 ECD_L
 ClientSampleId :
 TP-22



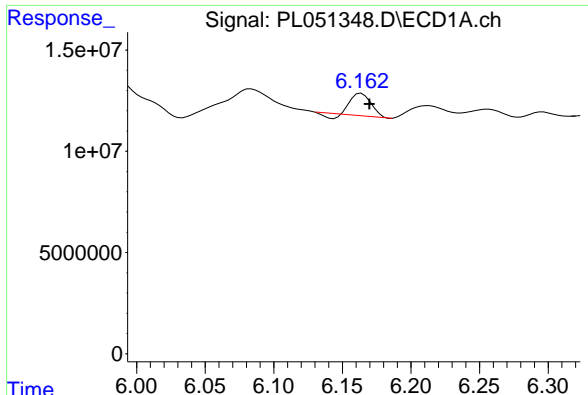
#15 Endosulfan II
 R.T.: 6.846 min
 Delta R.T.: 0.013 min
 Response: 5372642
 Conc: 1.69 ng/ml



#16 4,4'-DDD
 R.T.: 5.923 min
 Delta R.T.: -0.012 min
 Response: 11647152
 Conc: 0.97 ng/ml

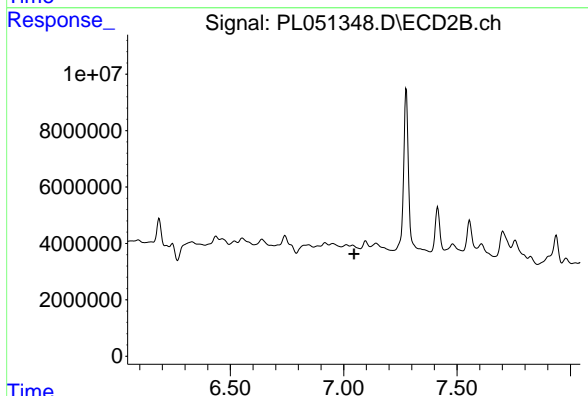


#16 4,4'-DDD
 R.T.: 6.741 min
 Delta R.T.: -0.008 min
 Response: 8294164
 Conc: 3.11 ng/ml

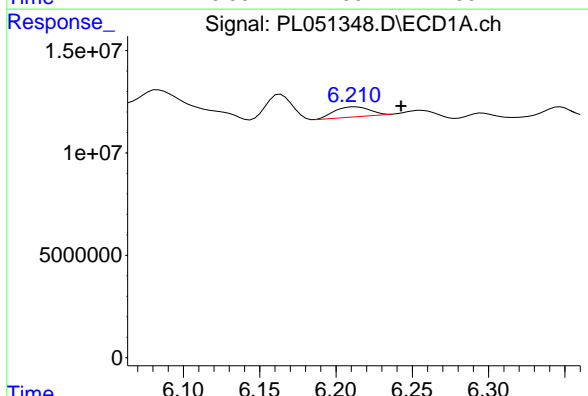


#17 4,4'-DDT
 R.T.: 6.164 min
 Delta R.T.: -0.006 min
 Response: 10160486
 Conc: 0.82 ng/ml

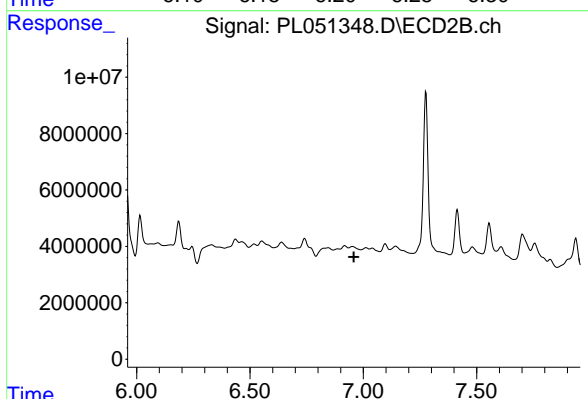
Instrument :
 ECD_L
 ClientSampled :
 TP-22



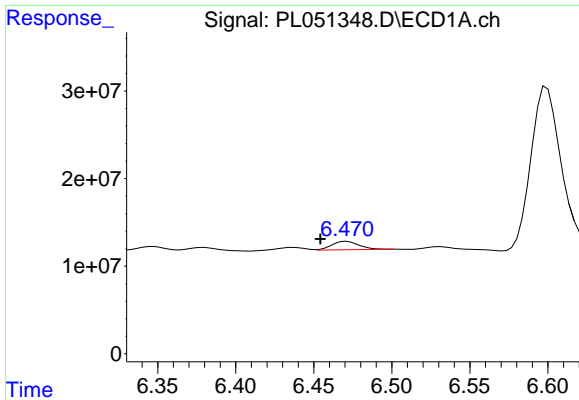
#17 4,4'-DDT
 R.T.: 0.000 min
 Exp R.T. : 7.046 min
 Response: 0
 Conc: N.D.



#18 Endrin aldehyde
 R.T.: 6.213 min
 Delta R.T.: -0.030 min
 Response: 7819573
 Conc: 0.68 ng/ml

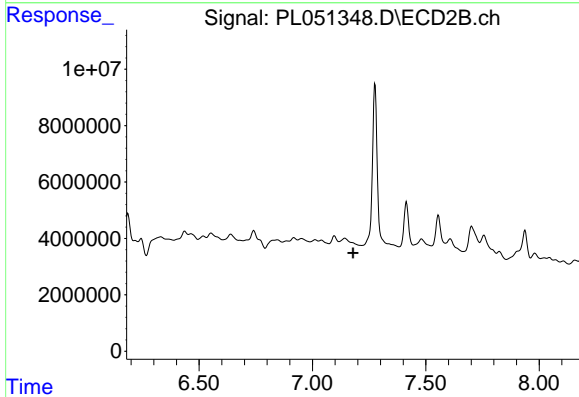


#18 Endrin aldehyde
 R.T.: 0.000 min
 Exp R.T. : 6.957 min
 Response: 0
 Conc: N.D.

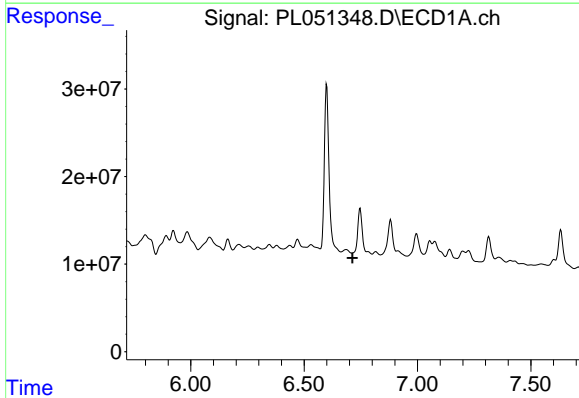


#19 Endosulfan Sulfate
 R.T.: 6.471 min
 Delta R.T.: 0.017 min
 Response: 11804542
 Conc: 0.93 ng/ml

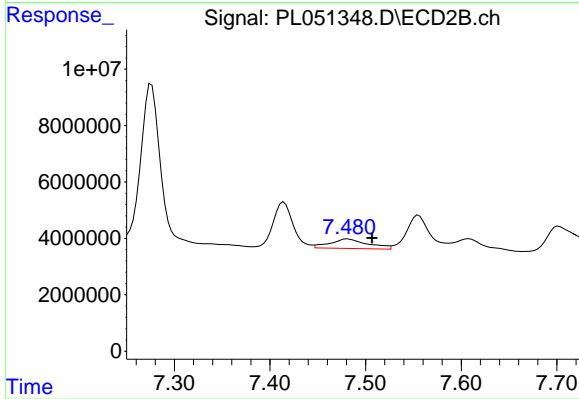
Instrument :
 ECD_L
 ClientSampled :
 TP-22



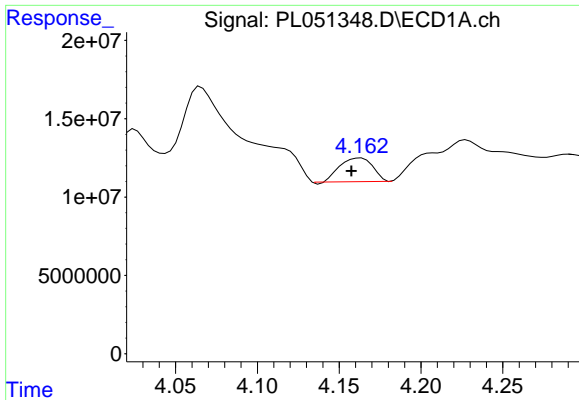
#19 Endosulfan Sulfate
 R.T.: 0.000 min
 Exp R.T. : 7.180 min
 Response: 0
 Conc: N.D.



#20 Methoxychlor
 R.T.: 0.000 min
 Exp R.T. : 6.714 min
 Response: 0
 Conc: N.D.

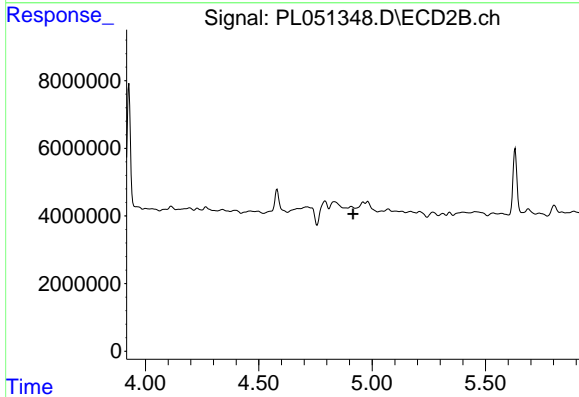


#20 Methoxychlor
 R.T.: 7.481 min
 Delta R.T.: -0.026 min
 Response: 9255317
 Conc: 6.31 ng/ml

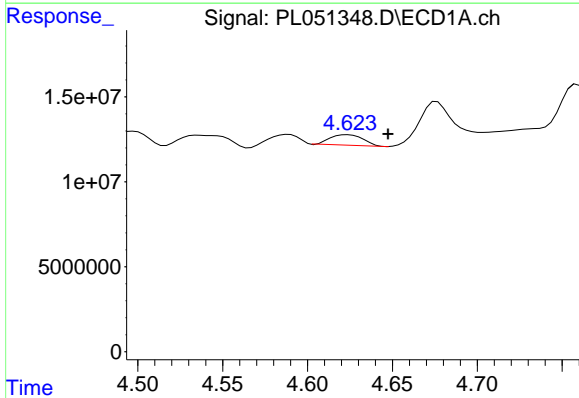


#23 Chlordane-1
 R.T.: 4.163 min
 Delta R.T.: 0.006 min
 Response: 21082107
 Conc: 57.30 ng/ml

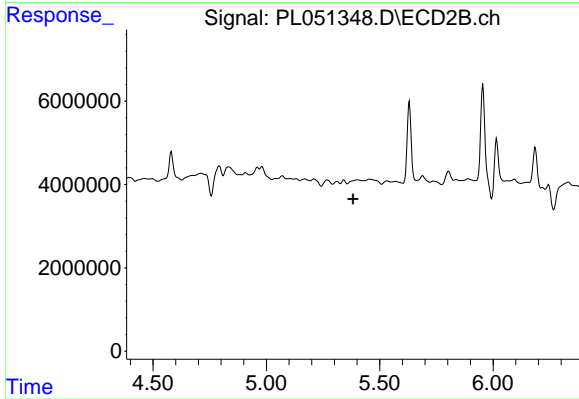
Instrument :
 ECD_L
 ClientSampled :
 TP-22



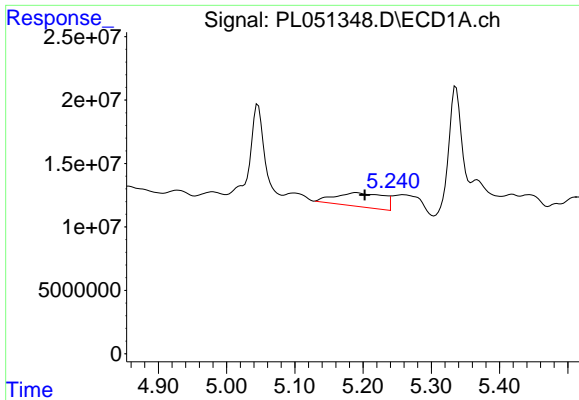
#23 Chlordane-1
 R.T.: 0.000 min
 Exp R.T. : 4.916 min
 Response: 0
 Conc: N.D.



#24 Chlordane-2
 R.T.: 4.624 min
 Delta R.T.: -0.024 min
 Response: 8281830
 Conc: 18.50 ng/ml

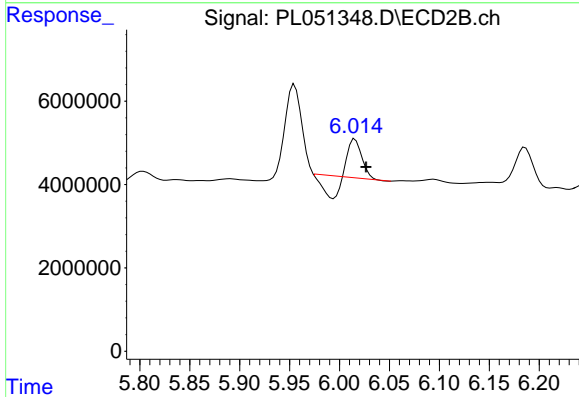


#24 Chlordane-2
 R.T.: 0.000 min
 Exp R.T. : 5.383 min
 Response: 0
 Conc: N.D.

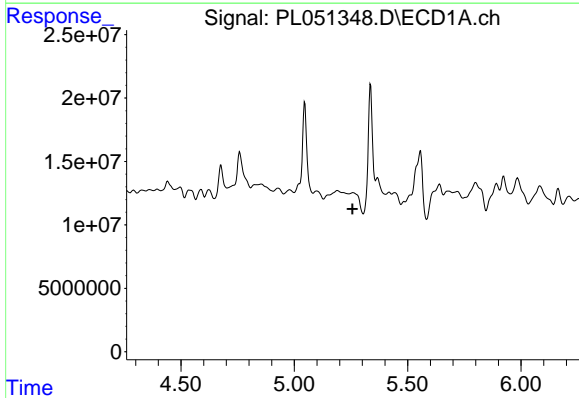


#25 Chlordane-3
 R.T.: 5.190 min
 Delta R.T.: -0.012 min
 Response: 53539247
 Conc: 38.25 ng/ml

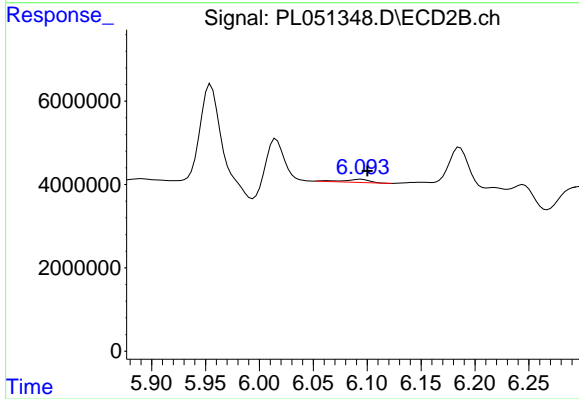
Instrument :
 ECD_L
 ClientSampleId :
 TP-22



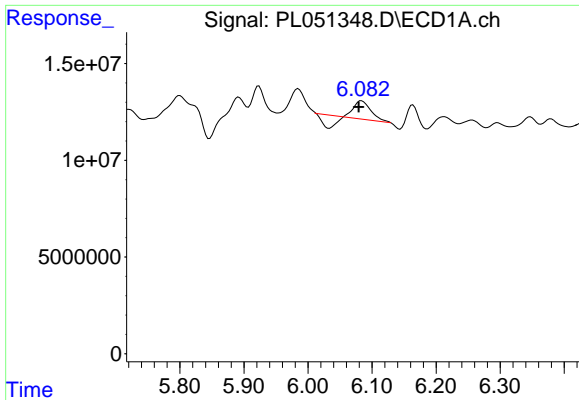
#25 Chlordane-3
 R.T.: 6.015 min
 Delta R.T.: -0.011 min
 Response: 4434641
 Conc: 9.22 ng/ml



#26 Chlordane-4
 R.T.: 0.000 min
 Exp R.T. : 5.257 min
 Response: 0
 Conc: N.D.

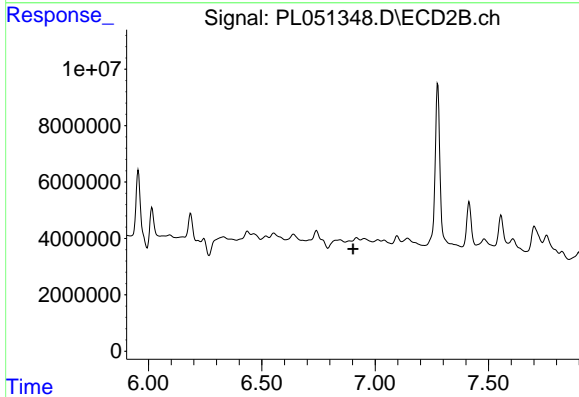


#26 Chlordane-4
 R.T.: 6.094 min
 Delta R.T.: -0.006 min
 Response: 1221994
 Conc: 2.10 ng/ml

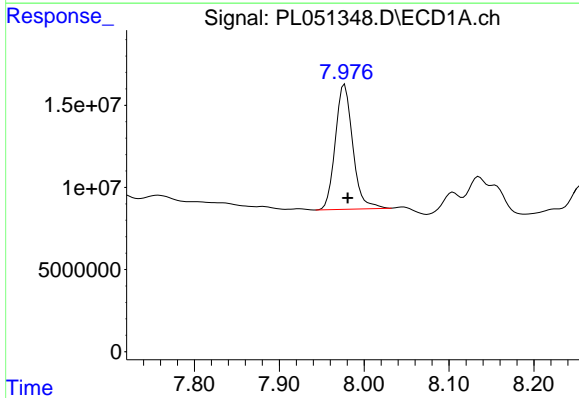


#27 Chlordane-5
 R.T.: 6.083 min
 Delta R.T.: 0.004 min
 Response: 9107854
 Conc: 17.93 ng/ml

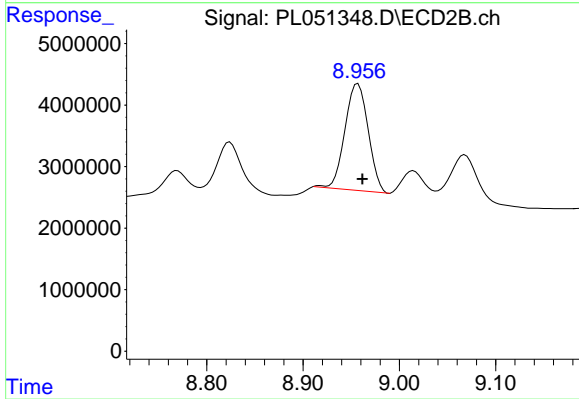
Instrument :
 ECD_L
 ClientSampled :
 TP-22



#27 Chlordane-5
 R.T.: 0.000 min
 Exp R.T. : 6.902 min
 Response: 0
 Conc: N.D.



#28 Decachlorobiphenyl
 R.T.: 7.977 min
 Delta R.T.: -0.003 min
 Response: 108632402
 Conc: 10.73 ng/ml



#28 Decachlorobiphenyl
 R.T.: 8.957 min
 Delta R.T.: -0.005 min
 Response: 29067015
 Conc: 10.28 ng/ml