

Data Path : Z:\pestpcbsrv\HPCHEM1\ECD\_L\Data\PL081222\  
 Data File : PL077053.D  
 Signal(s) : Signal #1: ECD1A.ch Signal #2: ECD2B.ch  
 Acq On : 12 Aug 2022 15:28  
 Operator : AR\AJ  
 Sample : N4188-19  
 Misc :  
 ALS Vial : 8 Sample Multiplier: 1

Instrument :  
 ECD\_L  
 ClientSampleId :

Integration File signal 1: autoint1.e  
 Integration File signal 2: autoint2.e  
 Quant Time: Aug 12 22:24:32 2022  
 Quant Method : Z:\pestpcbsrv\HPCHEM1\ECD\_L\methods\PL080822.M  
 Quant Title : GC Extractables  
 QLast Update : Tue Aug 09 09:13:15 2022  
 Response via : Initial Calibration  
 Integrator: ChemStation

Volume Inj. : 1 µl  
 Signal #1 Phase : ZB-MR2 Signal #2 Phase: ZB-MR1  
 Signal #1 Info : 30M x 0.32mm x0.2 Signal #2 Info : 30M x 0.32mm x0.5µm

Compound	RT#1	RT#2	Resp#1	Resp#2	ng/ml	ng/ml
System Monitoring Compounds						
1) SA Tetrachlo...	3.420	2.637	17914962	48644211	18.270	16.993
28) SA Decachlor...	8.911	7.743	12159025	31369224	16.106	13.934
Target Compounds						
2) A alpha-BHC	3.855f	0.000	238119	0	0.172	N.D. #
3) MA gamma-BHC...	0.000	3.428f	0	1587802	N.D.	0.416 #
4) MA Heptachlor	0.000	3.759f	0	366924	N.D.	0.102 #
5) MB Aldrin	0.000	4.041f	0	3755845	N.D.	1.060 #
6) B beta-BHC	0.000	3.759	0	366924	N.D.	0.235 #
15) B Endosulfa...	6.714f	0.000	121993	0	0.142	N.D. #
20) A Methoxychlor	0.000	6.451	0	1299560	N.D.	1.080 #
23) Chlordane-1	0.000	3.633f	0	102132	N.D.	1.049 #
24) Chlordane-2	0.000	4.204f	0	2701074	N.D.	23.485 #
27) Chlordane-5	0.000	5.561f	0	822587	N.D.	9.021 #

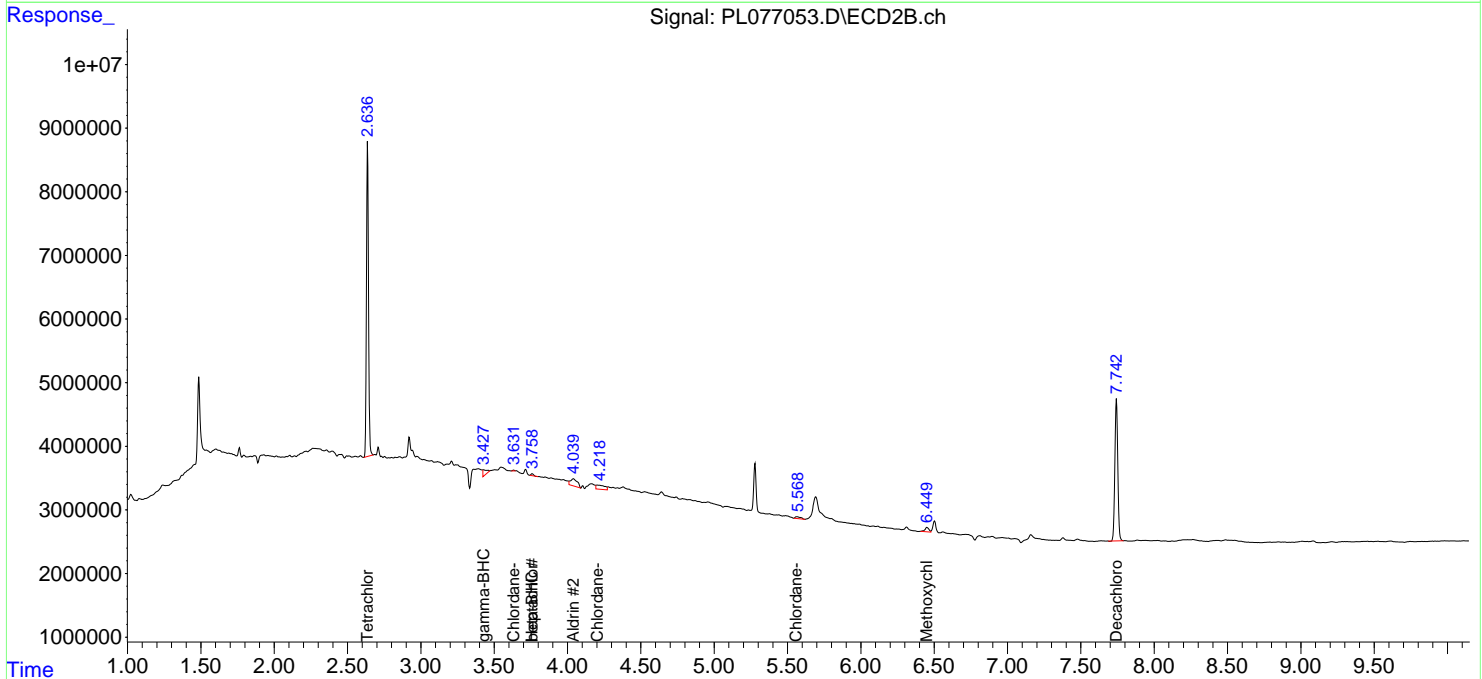
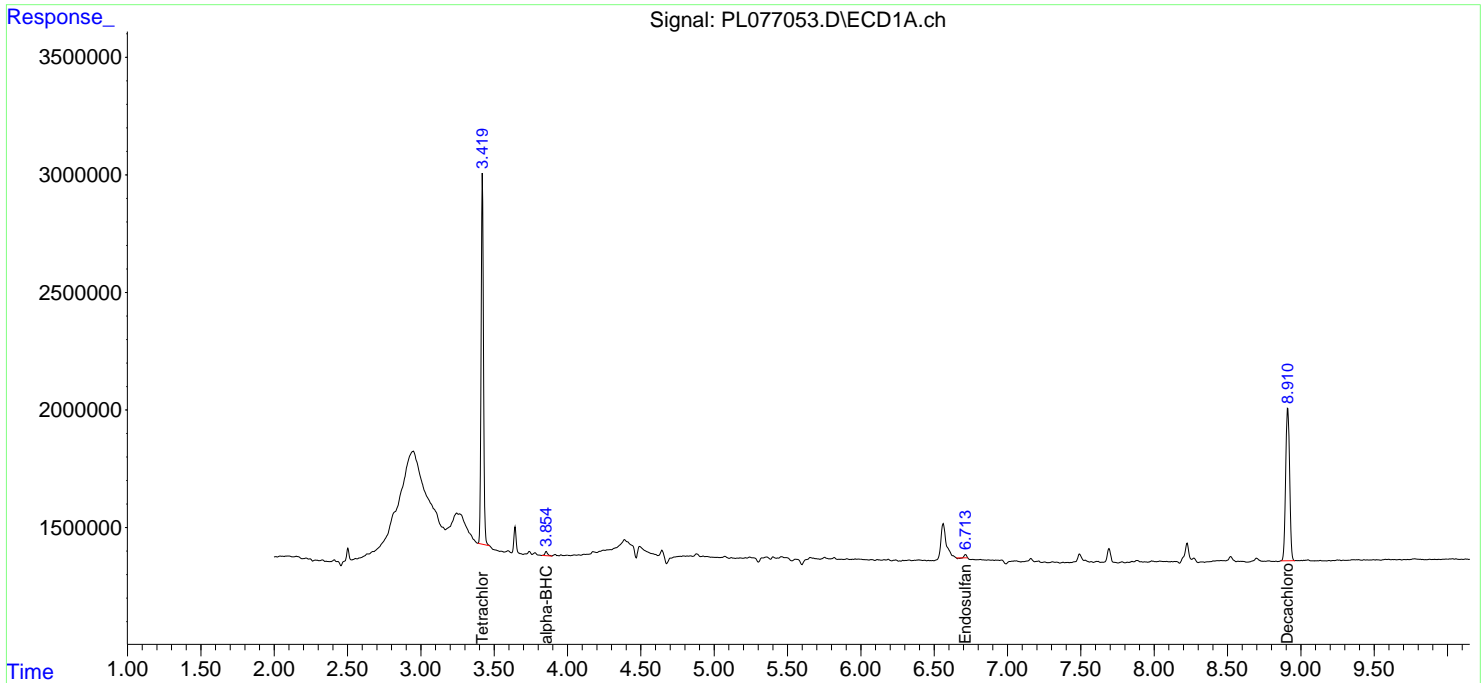
(f)=RT Delta > 1/2 Window (#)=Amounts differ by > 25% (m)=manual int.

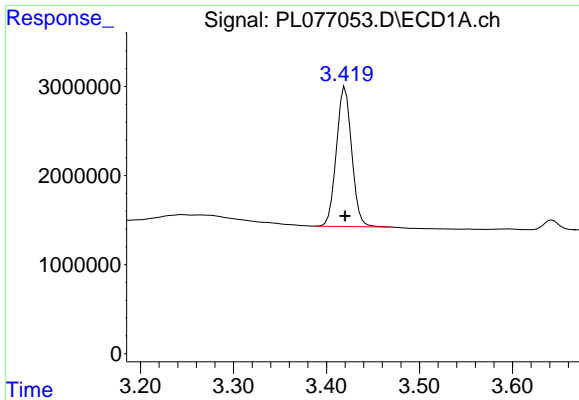
Data Path : Z:\pestpcbsrv\HPCHEM1\ECD\_L\Data\PL081222\  
 Data File : PL077053.D  
 Signal(s) : Signal #1: ECD1A.ch Signal #2: ECD2B.ch  
 Acq On : 12 Aug 2022 15:28  
 Operator : AR\AJ  
 Sample : N4188-19  
 Misc :  
 ALS Vial : 8 Sample Multiplier: 1

Instrument :  
 ECD\_L  
 ClientSampleId :

Integration File signal 1: autoint1.e  
 Integration File signal 2: autoint2.e  
 Quant Time: Aug 12 22:24:32 2022  
 Quant Method : Z:\pestpcbsrv\HPCHEM1\ECD\_L\methods\PL080822.M  
 Quant Title : GC Extractables  
 QLast Update : Tue Aug 09 09:13:15 2022  
 Response via : Initial Calibration  
 Integrator: ChemStation

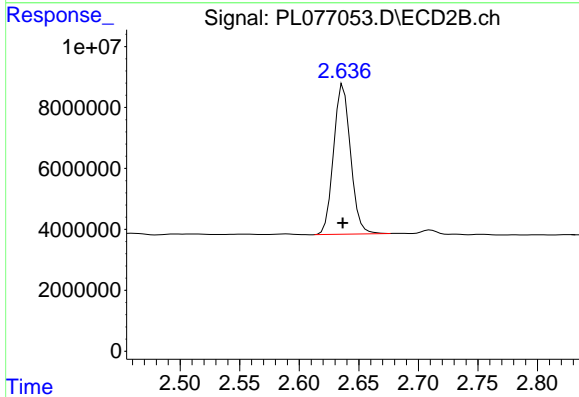
Volume Inj. : 1 µl  
 Signal #1 Phase : ZB-MR2 Signal #2 Phase: ZB-MR1  
 Signal #1 Info : 30M x 0.32mm x0.2 Signal #2 Info : 30M x 0.32mm x0.5µm



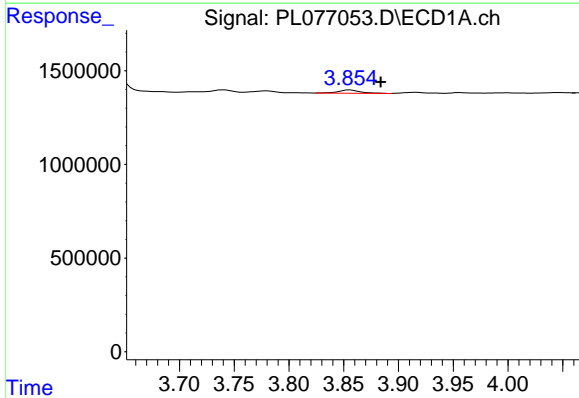


#1 Tetrachloro-m-xylene  
 R.T.: 3.420 min  
 Delta R.T.: 0.000 min  
 Response: 17914962  
 Conc: 18.27 ng/ml

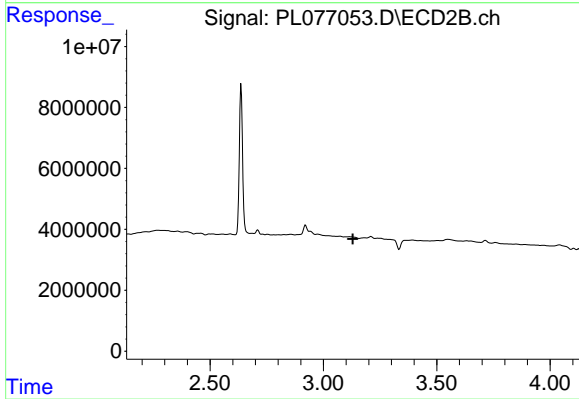
Instrument :  
 ECD\_L  
 ClientSampleId :



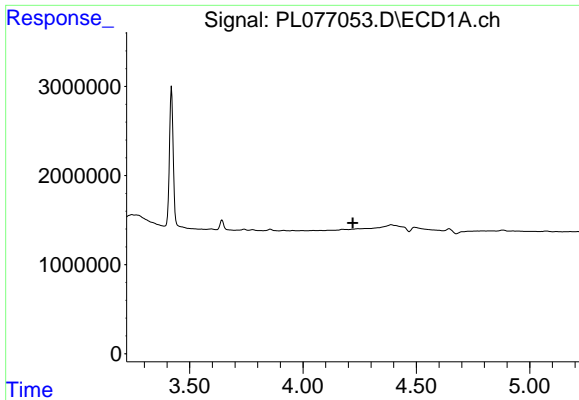
#1 Tetrachloro-m-xylene  
 R.T.: 2.637 min  
 Delta R.T.: 0.000 min  
 Response: 48644211  
 Conc: 16.99 ng/ml



#2 alpha-BHC  
 R.T.: 3.855 min  
 Delta R.T.: -0.029 min  
 Response: 238119  
 Conc: 0.17 ng/ml



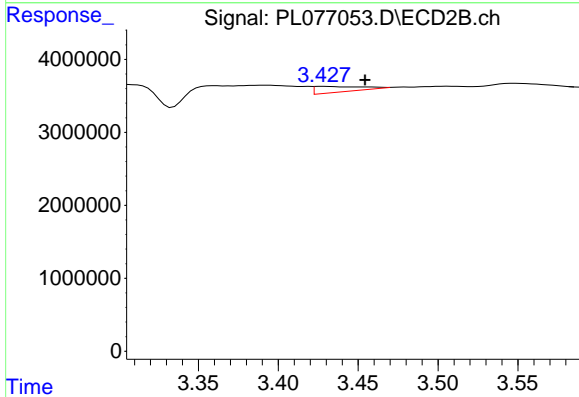
#2 alpha-BHC  
 R.T.: 0.000 min  
 Exp R.T. : 3.130 min  
 Response: 0  
 Conc: N.D.



#3 gamma-BHC (Lindane)

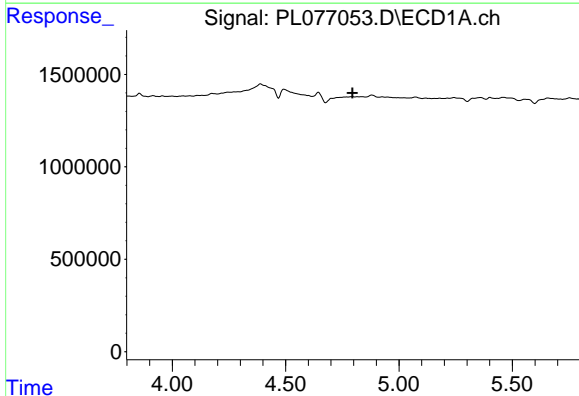
R.T.: 0.000 min  
 Exp R.T.: 4.220 min  
 Response: 0  
 Conc: N.D.

Instrument :  
 ECD\_L  
 ClientSampleId :



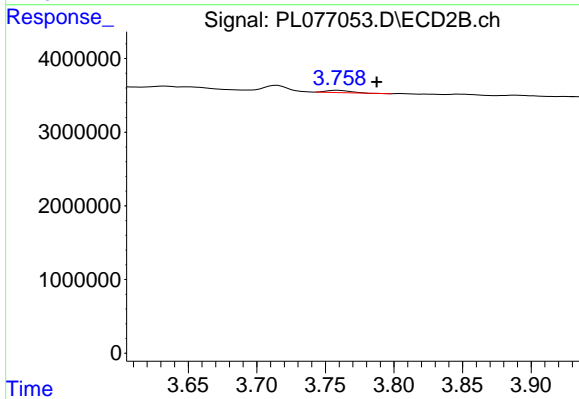
#3 gamma-BHC (Lindane)

R.T.: 3.428 min  
 Delta R.T.: -0.026 min  
 Response: 1587802  
 Conc: 0.42 ng/ml



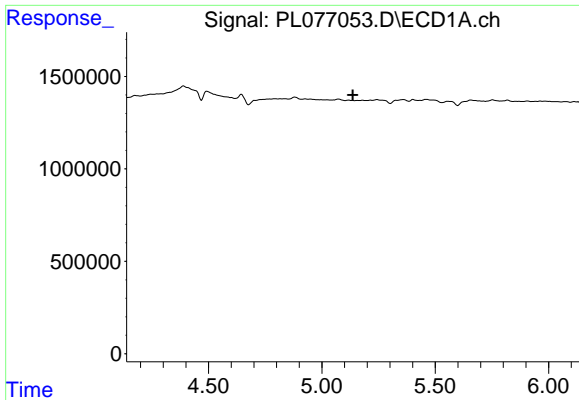
#4 Heptachlor

R.T.: 0.000 min  
 Exp R.T.: 4.795 min  
 Response: 0  
 Conc: N.D.



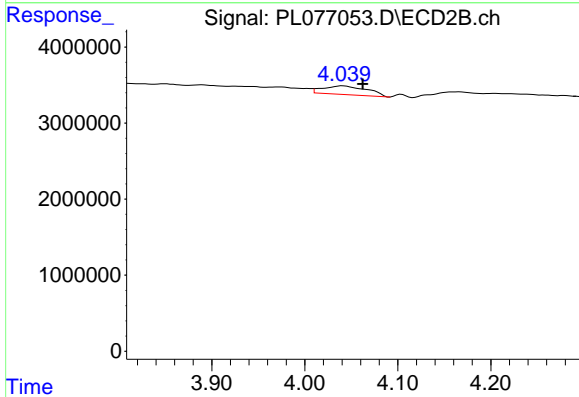
#4 Heptachlor

R.T.: 3.759 min  
 Delta R.T.: -0.028 min  
 Response: 366924  
 Conc: 0.10 ng/ml

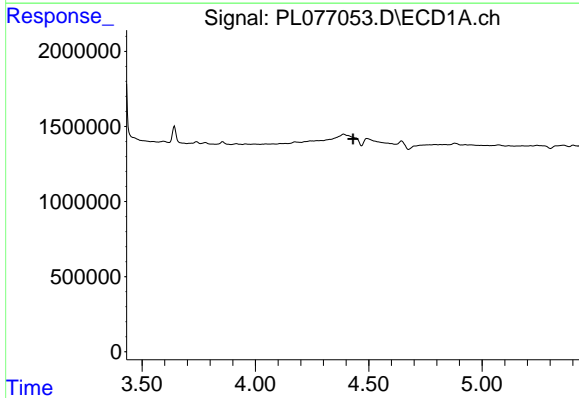


#5 Aldrin  
 R.T.: 0.000 min  
 Exp R.T.: 5.136 min  
 Response: 0  
 Conc: N.D.

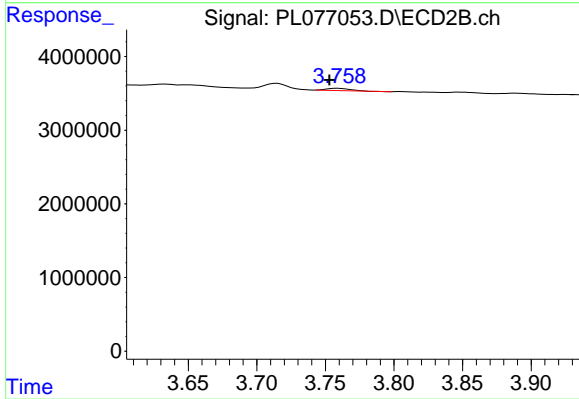
Instrument :  
 ECD\_L  
 ClientSampleId :



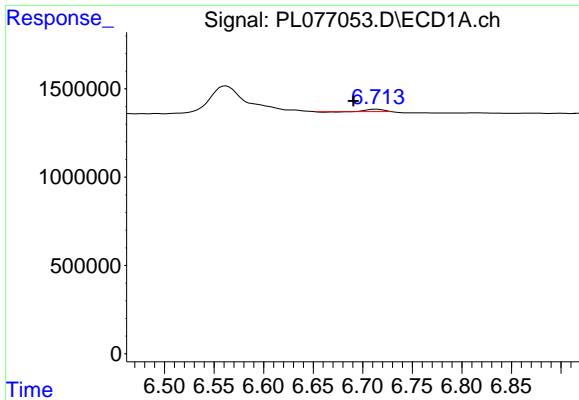
#5 Aldrin  
 R.T.: 4.041 min  
 Delta R.T.: -0.021 min  
 Response: 3755845  
 Conc: 1.06 ng/ml



#6 beta-BHC  
 R.T.: 0.000 min  
 Exp R.T.: 4.431 min  
 Response: 0  
 Conc: N.D.



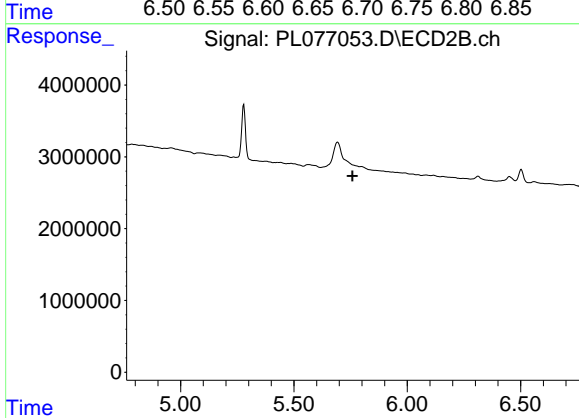
#6 beta-BHC  
 R.T.: 3.759 min  
 Delta R.T.: 0.006 min  
 Response: 366924  
 Conc: 0.23 ng/ml



#15 Endosulfan II

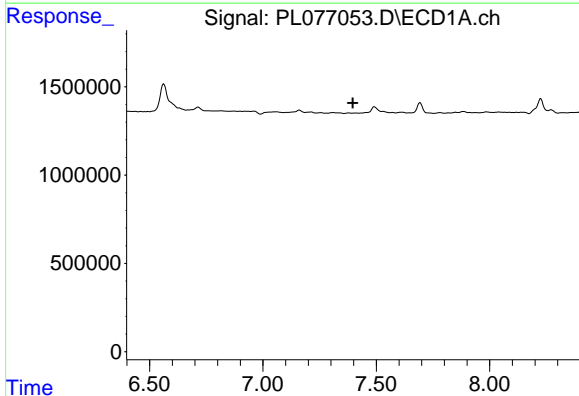
R.T.: 6.714 min  
 Delta R.T.: 0.023 min  
 Response: 121993  
 Conc: 0.14 ng/ml

Instrument :  
 ECD\_L  
 ClientSampleId :



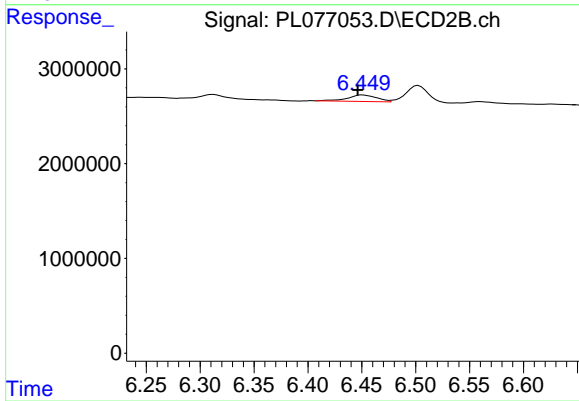
#15 Endosulfan II

R.T.: 0.000 min  
 Exp R.T. : 5.759 min  
 Response: 0  
 Conc: N.D.



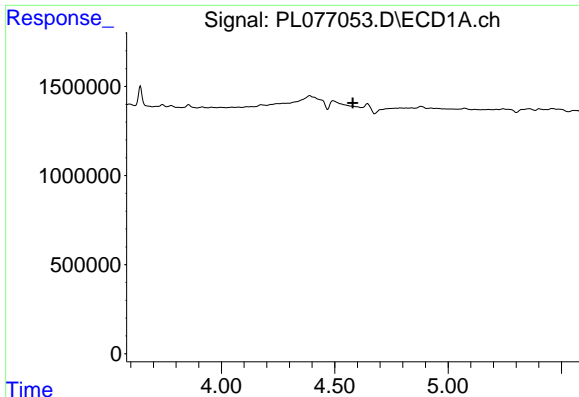
#20 Methoxychlor

R.T.: 0.000 min  
 Exp R.T. : 7.396 min  
 Response: 0  
 Conc: N.D.



#20 Methoxychlor

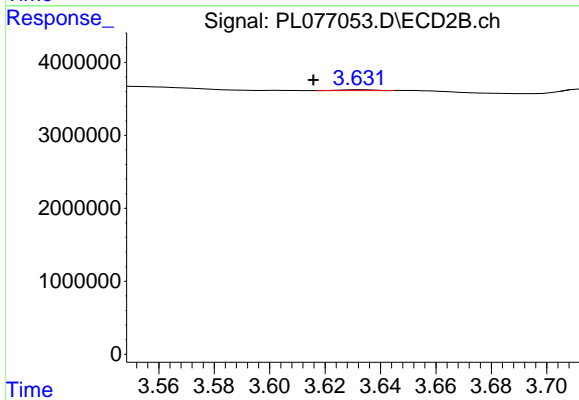
R.T.: 6.451 min  
 Delta R.T.: 0.005 min  
 Response: 1299560  
 Conc: 1.08 ng/ml



#23 Chlordane-1

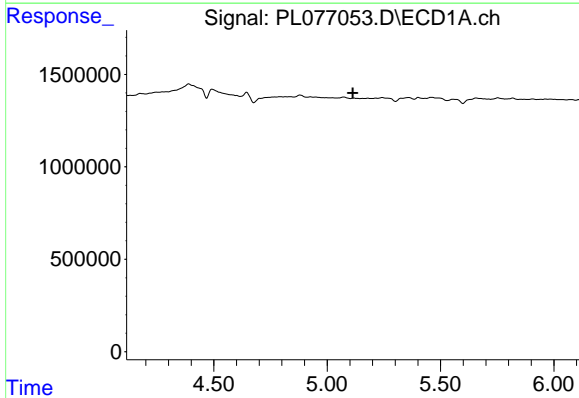
R.T.: 0.000 min  
 Exp R.T. : 4.579 min  
 Response: 0  
 Conc: N.D.

Instrument :  
 ECD\_L  
 ClientSampleId :



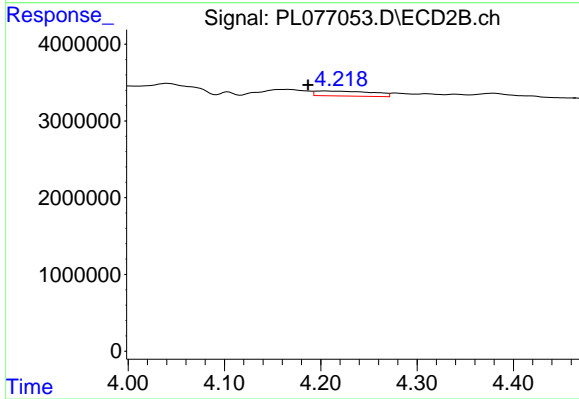
#23 Chlordane-1

R.T.: 3.633 min  
 Delta R.T.: 0.017 min  
 Response: 102132  
 Conc: 1.05 ng/ml



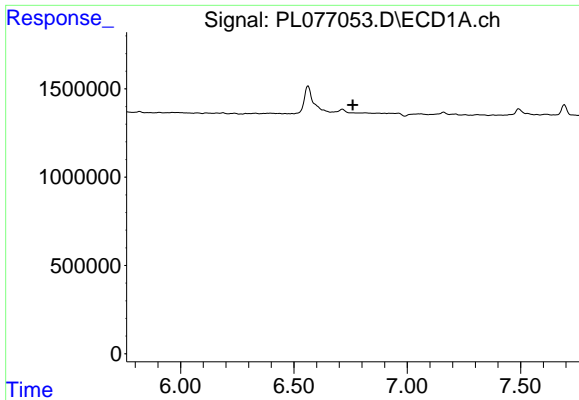
#24 Chlordane-2

R.T.: 0.000 min  
 Exp R.T. : 5.113 min  
 Response: 0  
 Conc: N.D.



#24 Chlordane-2

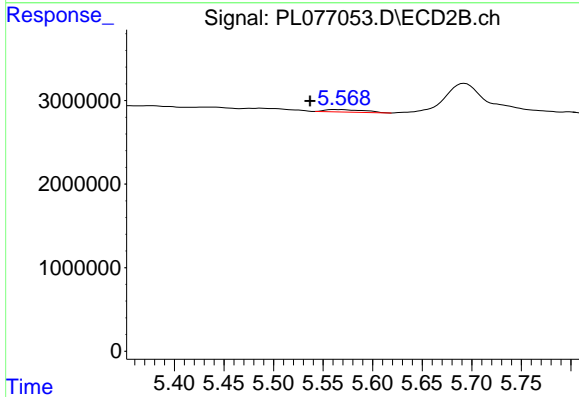
R.T.: 4.204 min  
 Delta R.T.: 0.017 min  
 Response: 2701074  
 Conc: 23.48 ng/ml



#27 Chlordane-5

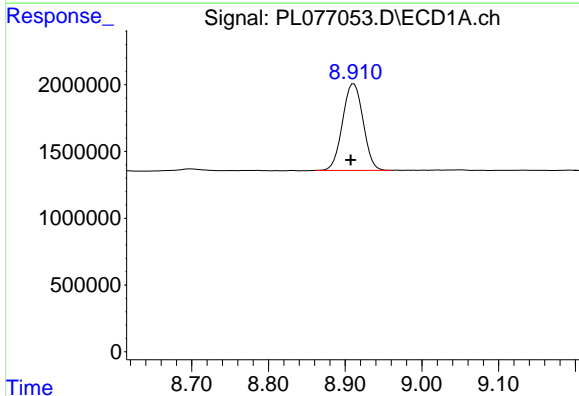
R.T.: 0.000 min  
 Exp R.T.: 6.760 min  
 Response: 0  
 Conc: N.D.

Instrument :  
 ECD\_L  
 ClientSampleId :



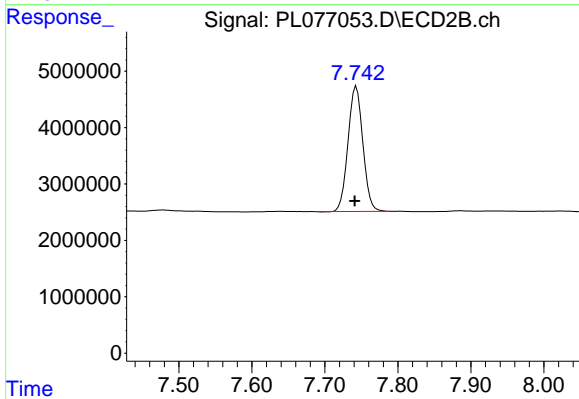
#27 Chlordane-5

R.T.: 5.561 min  
 Delta R.T.: 0.024 min  
 Response: 822587  
 Conc: 9.02 ng/ml



#28 Decachlorobiphenyl

R.T.: 8.911 min  
 Delta R.T.: 0.004 min  
 Response: 12159025  
 Conc: 16.11 ng/ml



#28 Decachlorobiphenyl

R.T.: 7.743 min  
 Delta R.T.: 0.002 min  
 Response: 31369224  
 Conc: 13.93 ng/ml