

Data Path : Z:\pestpcbsrv\HPCHEM1\ECD\_L\Data\PL081222\  
 Data File : PL077055.D  
 Signal(s) : Signal #1: ECD1A.ch Signal #2: ECD2B.ch  
 Acq On : 12 Aug 2022 15:55  
 Operator : AR\AJ  
 Sample : N4188-19MSD  
 Misc :  
 ALS Vial : 10 Sample Multiplier: 1

Instrument :  
 ECD\_L  
 ClientSampleId :

Integration File signal 1: autoint1.e  
 Integration File signal 2: autoint2.e  
 Quant Time: Aug 12 22:25:32 2022  
 Quant Method : Z:\pestpcbsrv\HPCHEM1\ECD\_L\methods\PL080822.M  
 Quant Title : GC Extractables  
 QLast Update : Tue Aug 09 09:13:15 2022  
 Response via : Initial Calibration  
 Integrator: ChemStation

Volume Inj. : 1 µl  
 Signal #1 Phase : ZB-MR2 Signal #2 Phase: ZB-MR1  
 Signal #1 Info : 30M x 0.32mm x0.2 Signal #2 Info : 30M x 0.32mm x0.5µm

	Compound	RT#1	RT#2	Resp#1	Resp#2	ng/ml	ng/ml
-----							
System Monitoring Compounds							
1)	SA Tetrachlo...	3.420	2.637	16801566	44661286	17.135	15.602
28)	SA Decachlor...	8.914	7.743	12023053	30871075	15.926	13.713
Target Compounds							
2)	A alpha-BHC	3.885	3.131	72198728	197.6E6	52.157	46.588
3)	MA gamma-BHC...	4.221	3.455	67444018	182.4E6	52.743	47.820
4)	MA Heptachlor	4.798	3.789	65781121	174.0E6	53.541	48.501
5)	MB Aldrin	5.138	4.064	58639413	164.7E6	51.682	46.479
6)	B beta-BHC	4.432	3.754	29977857	74320551	53.407	47.566
7)	B delta-BHC	4.676	3.978	58430437	177.3E6	52.480	46.397
8)	Heptachlo...	5.571	4.563	54668201	146.7E6	54.140	48.260
9)	A Endosulfan I	5.957	4.929	50405197	134.3E6	55.031	49.151
10)	B gamma-Chl...	5.827	4.813	54042484	146.0E6	53.919	47.915
11)	B alpha-Chl...	5.904	4.875	53977109	142.8E6	54.081	47.946
12)	B 4,4'-DDE	6.082	5.070	48331519	139.5E6	55.390	48.333
13)	MA Dieldrin	6.235	5.192	51280143	140.4E6	52.811	46.804
14)	MA Endrin	6.466	5.465	44054163	122.3E6	54.131	48.137
15)	B Endosulfa...	6.694	5.761	43121368	113.4E6	50.272	43.292
16)	A 4,4'-DDD	6.607	5.622	42091797	113.5E6	55.251	50.372
17)	MA 4,4'-DDT	6.917	5.871	43386088	110.8E6	56.460	48.872
18)	B Endrin al...	6.825	5.940	35200886	86120993	48.822	43.803
19)	B Endosulfa...	7.058	6.163	43848134	112.7E6	53.035	48.852
20)	A Methoxychlor	7.399	6.449	23503480	57803101	52.949	48.056
21)	B Endrin ke...	7.547	6.663	49583593	125.0E6	54.734	49.133
22)	Mirex	8.007	6.840	37851537	92248134	53.874	48.216
23)	Chlordane-1	0.000	3.635f	0	188770	N.D.	1.938 #
24)	Chlordane-2	5.138f	4.205f	58639413	1490510	1475.553	12.959 #
25)	Chlordane-3	5.827	4.813	54042484	146.0E6	371.758	461.063
26)	Chlordane-4	5.904	4.875	53977109	142.8E6	305.745	433.497 #

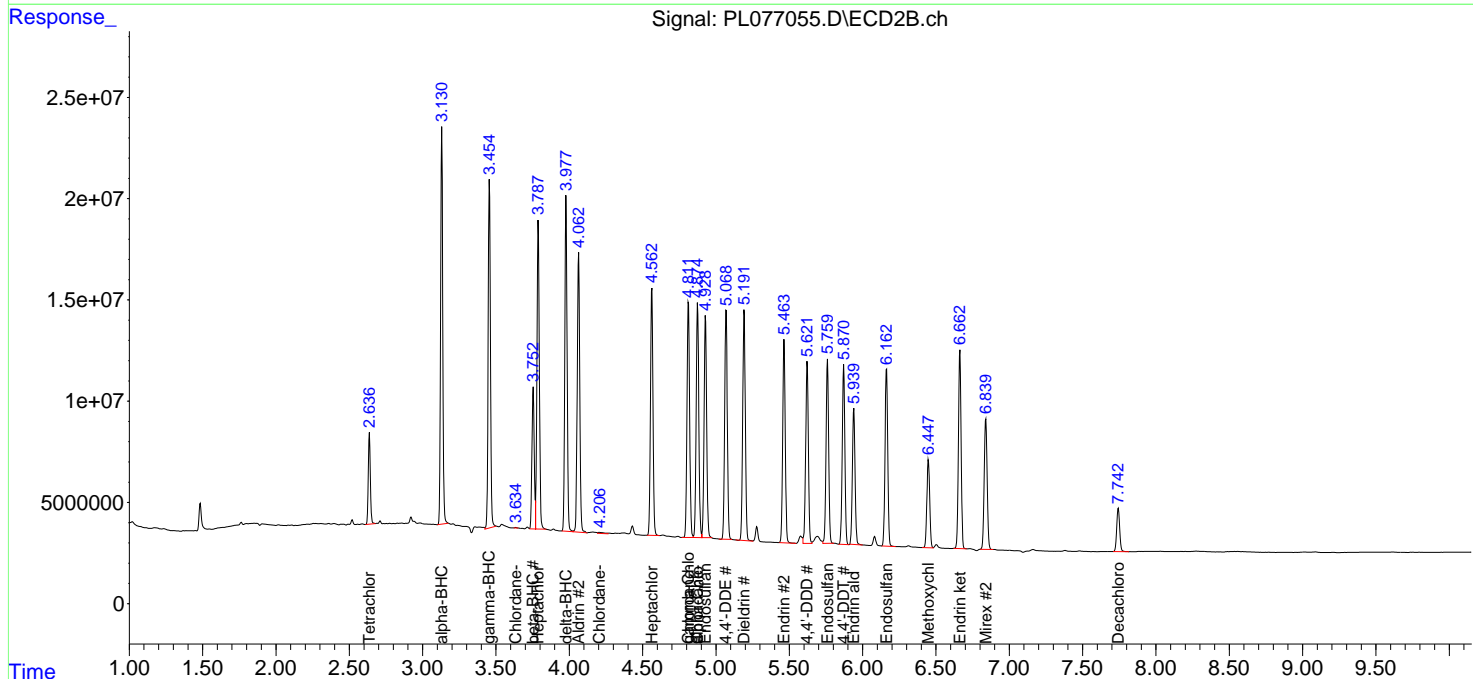
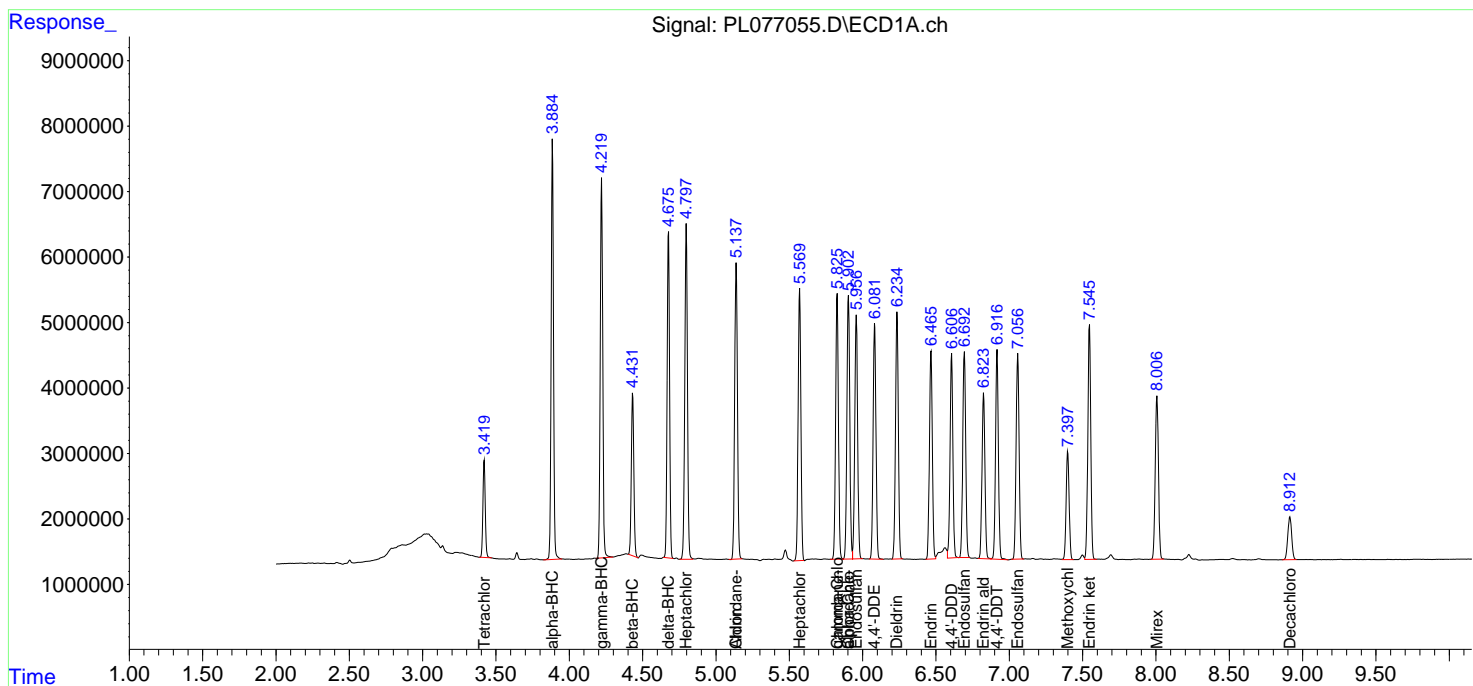
(f)=RT Delta > 1/2 Window (#)=Amounts differ by > 25% (m)=manual int.

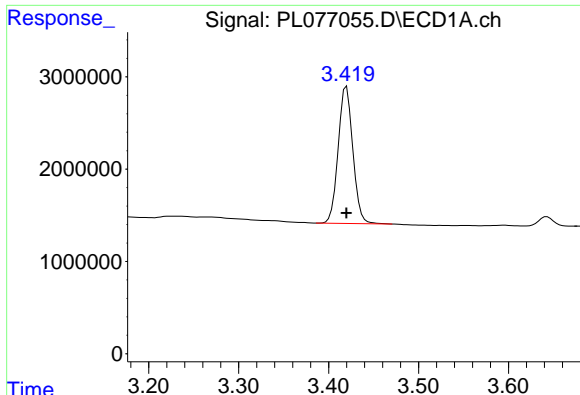
Data Path : Z:\pestpcbsrv\HPCHEM1\ECD\_L\Data\PL081222\  
 Data File : PL077055.D  
 Signal(s) : Signal #1: ECD1A.ch Signal #2: ECD2B.ch  
 Acq On : 12 Aug 2022 15:55  
 Operator : AR\AJ  
 Sample : N4188-19MSD  
 Misc :  
 ALS Vial : 10 Sample Multiplier: 1

Instrument :  
 ECD\_L  
 ClientSampleId :

Integration File signal 1: autoint1.e  
 Integration File signal 2: autoint2.e  
 Quant Time: Aug 12 22:25:32 2022  
 Quant Method : Z:\pestpcbsrv\HPCHEM1\ECD\_L\methods\PL080822.M  
 Quant Title : GC Extractables  
 QLast Update : Tue Aug 09 09:13:15 2022  
 Response via : Initial Calibration  
 Integrator: ChemStation

Volume Inj. : 1 µl  
 Signal #1 Phase : ZB-MR2 Signal #2 Phase: ZB-MR1  
 Signal #1 Info : 30M x 0.32mm x0.2 Signal #2 Info : 30M x 0.32mm x0.5µm

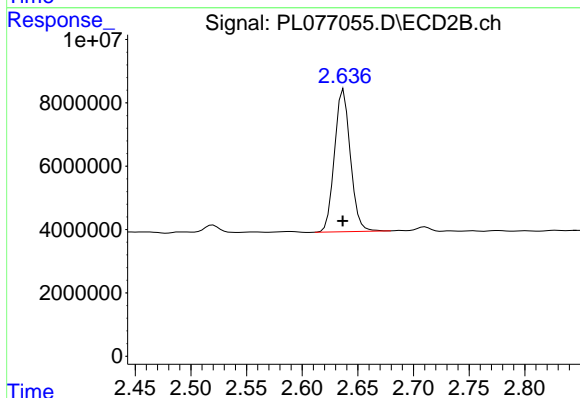




#1 Tetrachloro-m-xylene

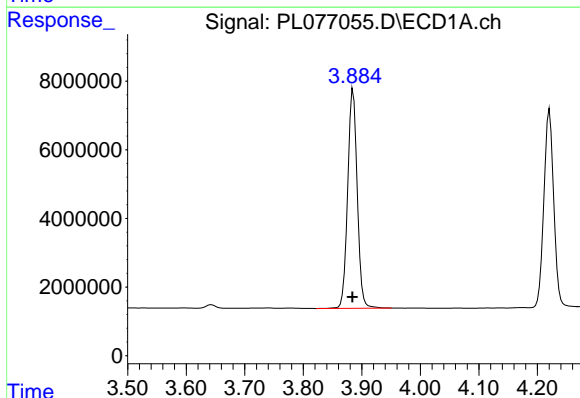
R.T.: 3.420 min  
 Delta R.T.: 0.000 min  
 Response: 16801566  
 Conc: 17.13 ng/ml

Instrument :  
 ECD\_L  
 ClientSampleId :



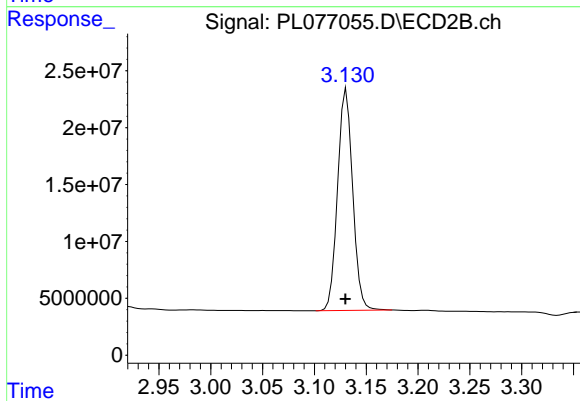
#1 Tetrachloro-m-xylene

R.T.: 2.637 min  
 Delta R.T.: 0.000 min  
 Response: 44661286  
 Conc: 15.60 ng/ml



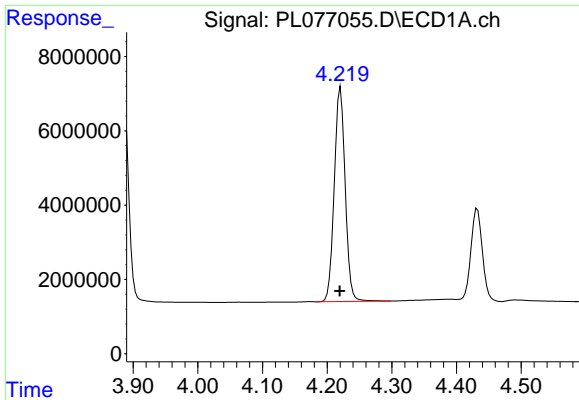
#2 alpha-BHC

R.T.: 3.885 min  
 Delta R.T.: 0.001 min  
 Response: 72198728  
 Conc: 52.16 ng/ml



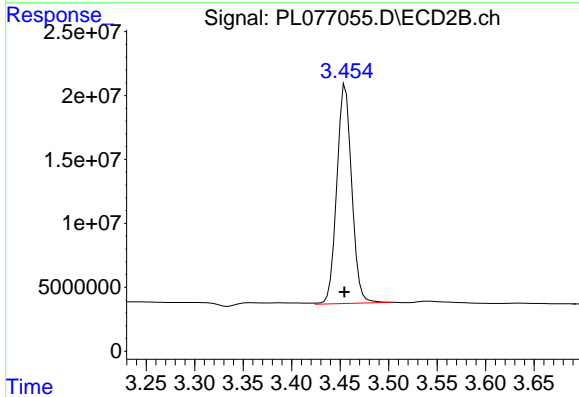
#2 alpha-BHC

R.T.: 3.131 min  
 Delta R.T.: 0.000 min  
 Response: 197572550  
 Conc: 46.59 ng/ml

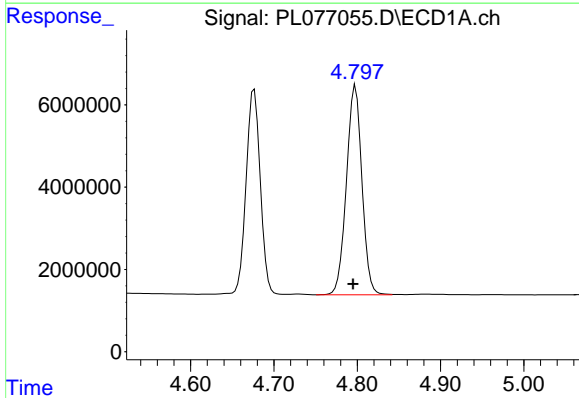


#3 gamma-BHC (Lindane)  
 R.T.: 4.221 min  
 Delta R.T.: 0.001 min  
 Response: 67444018  
 Conc: 52.74 ng/ml

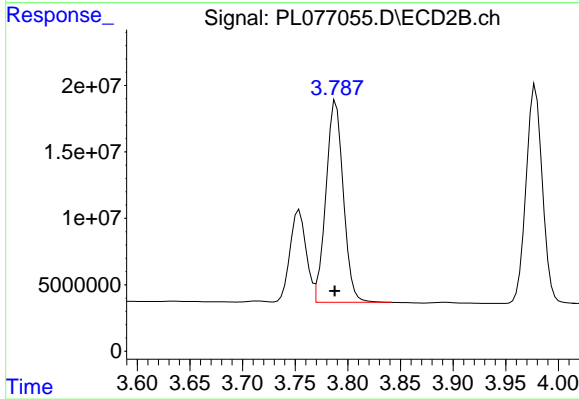
Instrument :  
 ECD\_L  
 ClientSampleId :



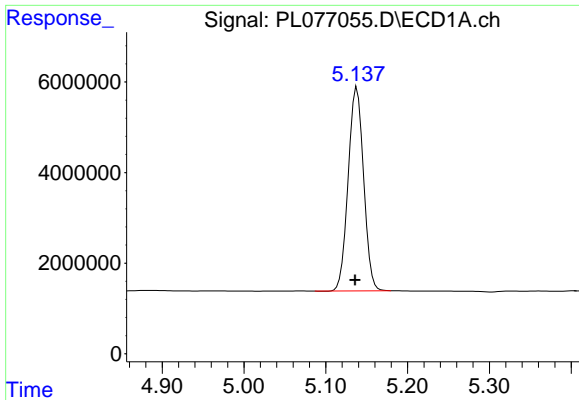
#3 gamma-BHC (Lindane)  
 R.T.: 3.455 min  
 Delta R.T.: 0.001 min  
 Response: 182447652  
 Conc: 47.82 ng/ml



#4 Heptachlor  
 R.T.: 4.798 min  
 Delta R.T.: 0.003 min  
 Response: 65781121  
 Conc: 53.54 ng/ml

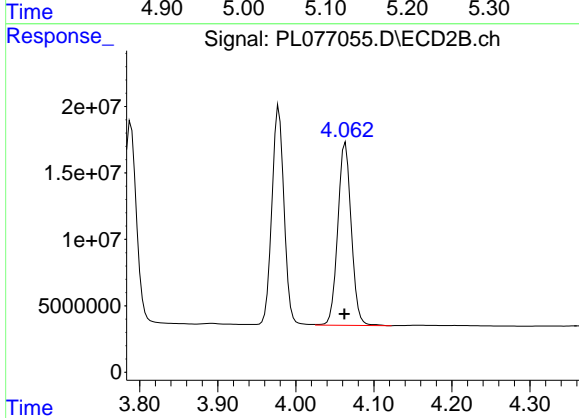


#4 Heptachlor  
 R.T.: 3.789 min  
 Delta R.T.: 0.001 min  
 Response: 174036295  
 Conc: 48.50 ng/ml

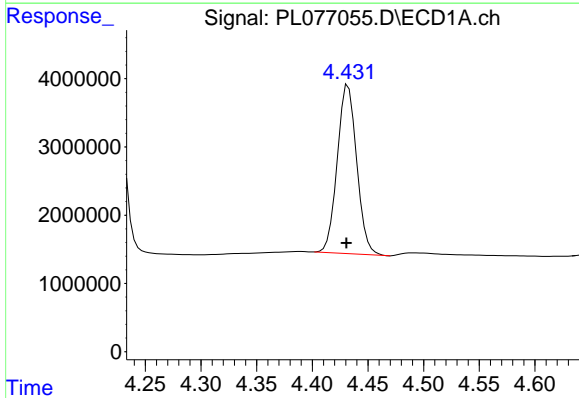


#5 Aldrin  
 R.T.: 5.138 min  
 Delta R.T.: 0.002 min  
 Response: 58639413  
 Conc: 51.68 ng/ml

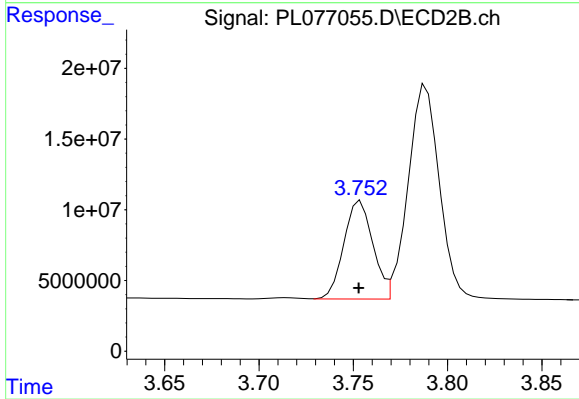
Instrument :  
 ECD\_L  
 ClientSampleId :



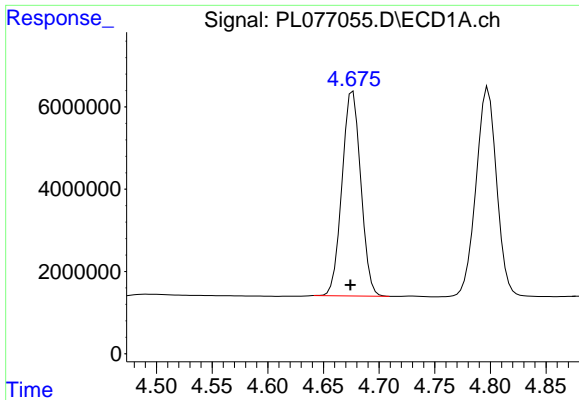
#5 Aldrin  
 R.T.: 4.064 min  
 Delta R.T.: 0.001 min  
 Response: 164666248  
 Conc: 46.48 ng/ml



#6 beta-BHC  
 R.T.: 4.432 min  
 Delta R.T.: 0.002 min  
 Response: 29977857  
 Conc: 53.41 ng/ml



#6 beta-BHC  
 R.T.: 3.754 min  
 Delta R.T.: 0.001 min  
 Response: 74320551  
 Conc: 47.57 ng/ml

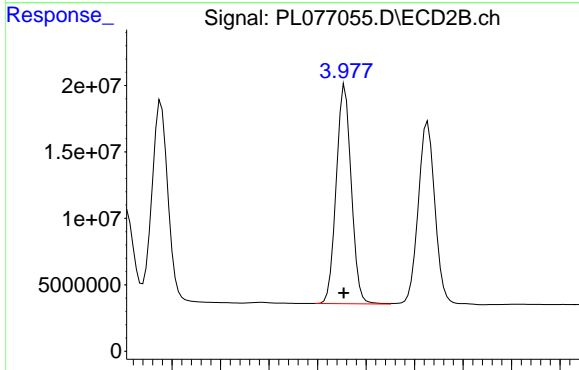


#7 delta-BHC

R.T.: 4.676 min  
 Delta R.T.: 0.002 min  
 Response: 58430437  
 Conc: 52.48 ng/ml

Instrument :  
 ECD\_L  
 ClientSampleId :

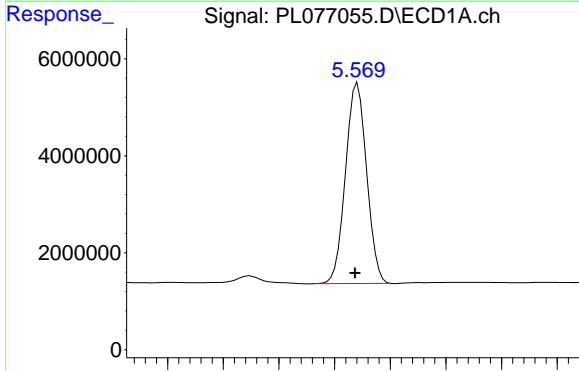
Time 4.50 4.55 4.60 4.65 4.70 4.75 4.80 4.85



#7 delta-BHC

R.T.: 3.978 min  
 Delta R.T.: 0.001 min  
 Response: 177322136  
 Conc: 46.40 ng/ml

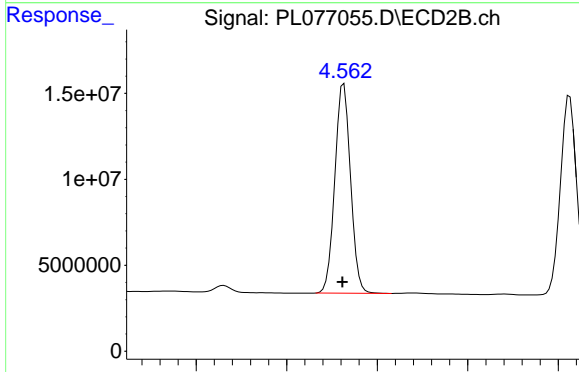
Time 3.80 3.85 3.90 3.95 4.00 4.05 4.10 4.15 4.20



#8 Heptachlor epoxide

R.T.: 5.571 min  
 Delta R.T.: 0.002 min  
 Response: 54668201  
 Conc: 54.14 ng/ml

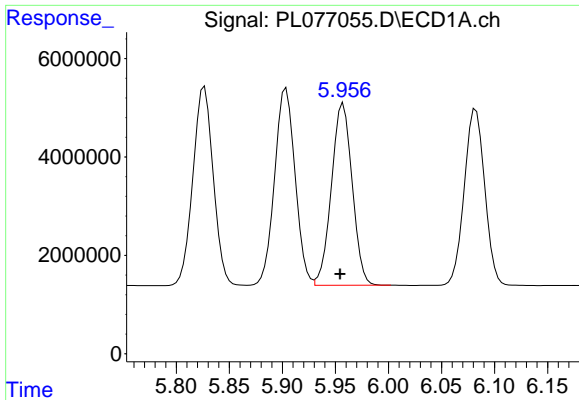
Time 5.40 5.45 5.50 5.55 5.60 5.65 5.70 5.75



#8 Heptachlor epoxide

R.T.: 4.563 min  
 Delta R.T.: 0.002 min  
 Response: 146665183  
 Conc: 48.26 ng/ml

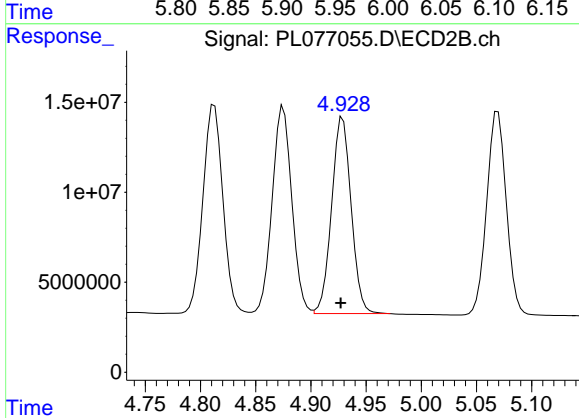
Time 4.40 4.50 4.60 4.70 4.80



#9 Endosulfan I

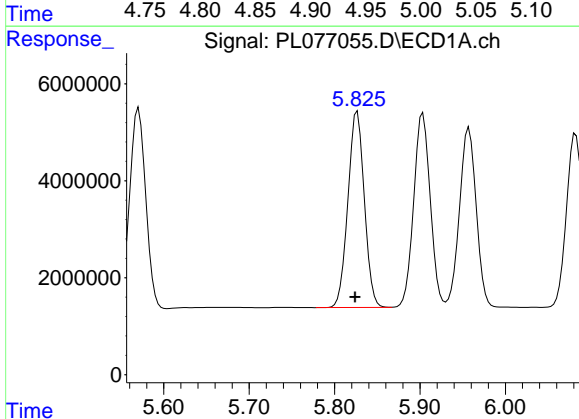
R.T.: 5.957 min  
Delta R.T.: 0.003 min  
Response: 50405197  
Conc: 55.03 ng/ml

Instrument :  
ECD\_L  
ClientSampleId :



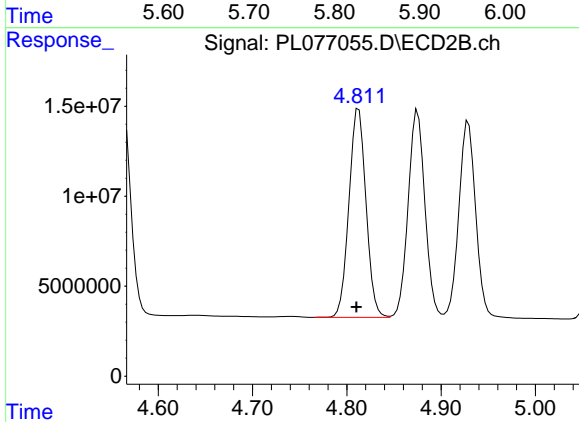
#9 Endosulfan I

R.T.: 4.929 min  
Delta R.T.: 0.002 min  
Response: 134320696  
Conc: 49.15 ng/ml



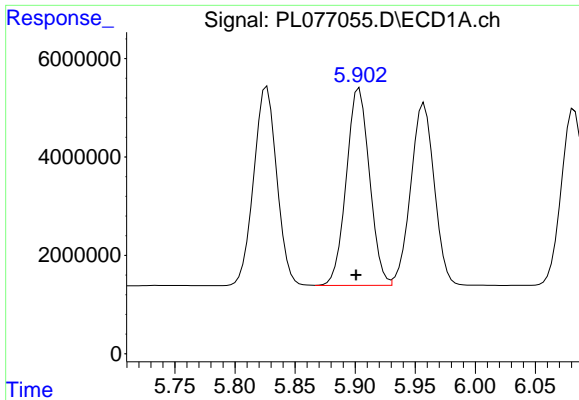
#10 gamma-Chlordane

R.T.: 5.827 min  
Delta R.T.: 0.003 min  
Response: 54042484  
Conc: 53.92 ng/ml



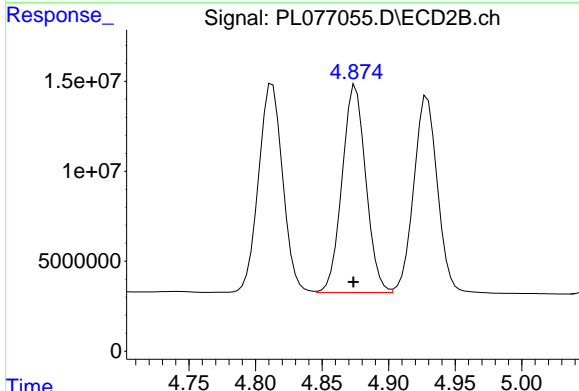
#10 gamma-Chlordane

R.T.: 4.813 min  
Delta R.T.: 0.002 min  
Response: 145974366  
Conc: 47.91 ng/ml

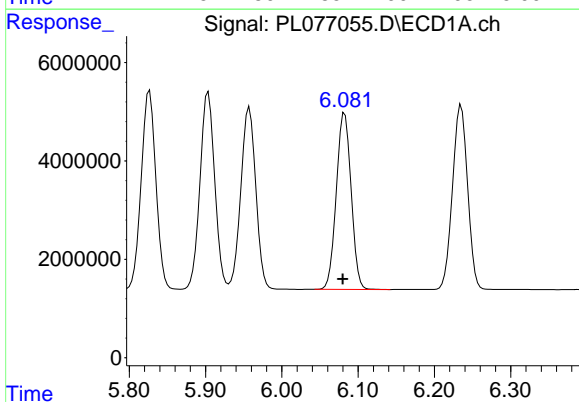


#11 alpha-Chlordane  
 R.T.: 5.904 min  
 Delta R.T.: 0.003 min  
 Response: 53977109  
 Conc: 54.08 ng/ml

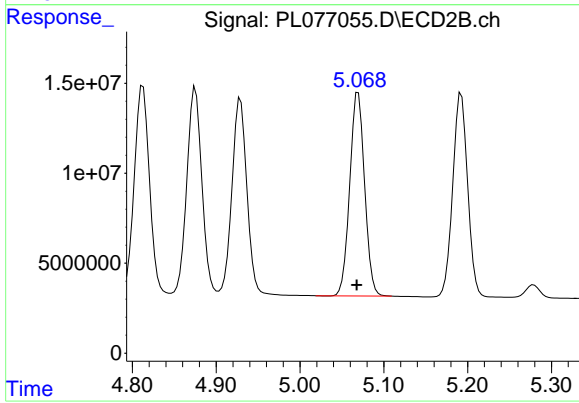
Instrument :  
 ECD\_L  
 ClientSampleId :



#11 alpha-Chlordane  
 R.T.: 4.875 min  
 Delta R.T.: 0.002 min  
 Response: 142777537  
 Conc: 47.95 ng/ml

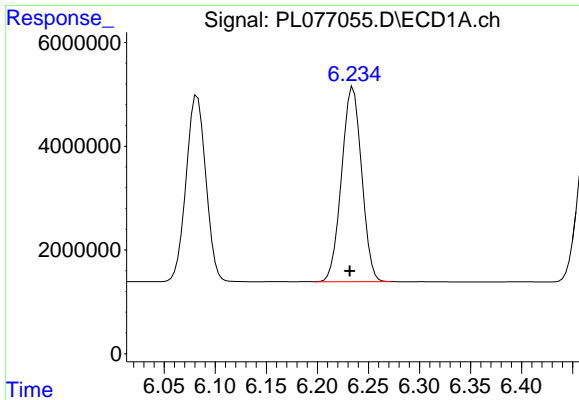


#12 4,4'-DDE  
 R.T.: 6.082 min  
 Delta R.T.: 0.002 min  
 Response: 48331519  
 Conc: 55.39 ng/ml



#12 4,4'-DDE  
 R.T.: 5.070 min  
 Delta R.T.: 0.002 min  
 Response: 139455496  
 Conc: 48.33 ng/ml

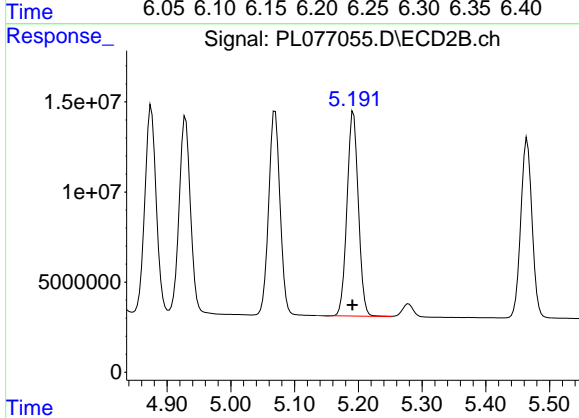




#13 Dieldrin

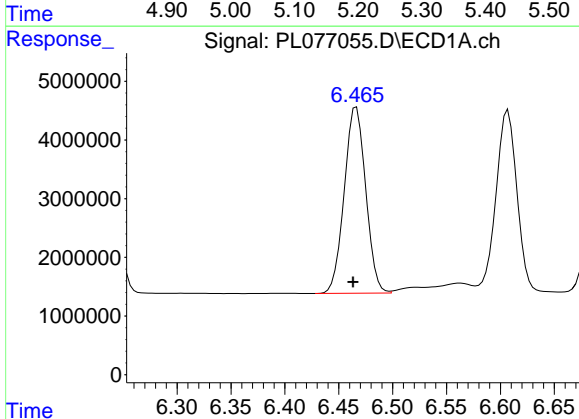
R.T.: 6.235 min  
 Delta R.T.: 0.003 min  
 Response: 51280143  
 Conc: 52.81 ng/ml

Instrument :  
 ECD\_L  
 ClientSampleId :



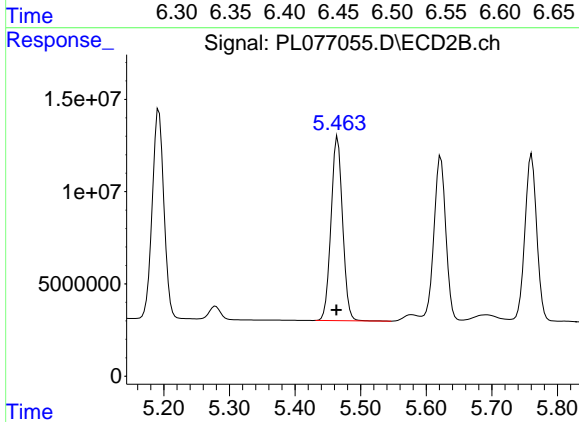
#13 Dieldrin

R.T.: 5.192 min  
 Delta R.T.: 0.002 min  
 Response: 140394207  
 Conc: 46.80 ng/ml



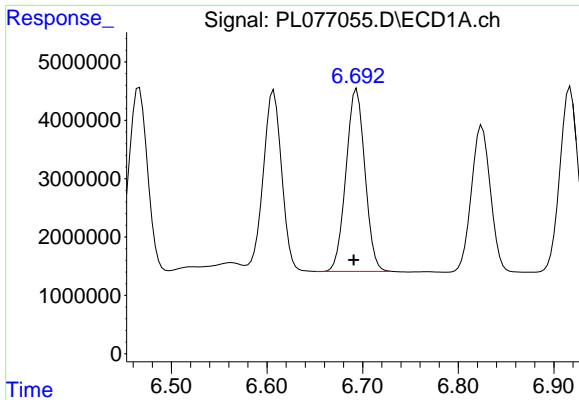
#14 Endrin

R.T.: 6.466 min  
 Delta R.T.: 0.003 min  
 Response: 44054163  
 Conc: 54.13 ng/ml



#14 Endrin

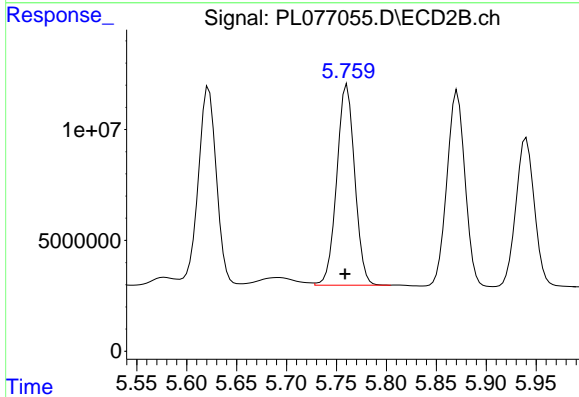
R.T.: 5.465 min  
 Delta R.T.: 0.002 min  
 Response: 122281869  
 Conc: 48.14 ng/ml



#15 Endosulfan II

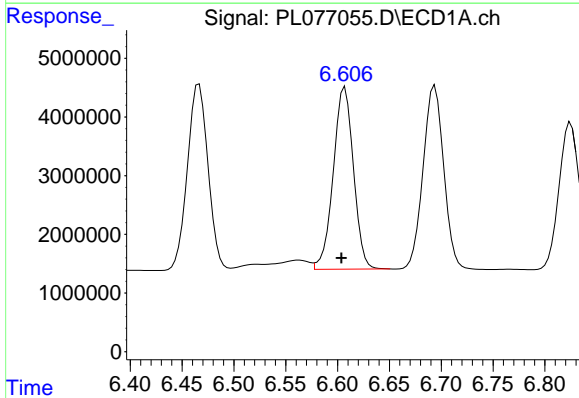
R.T.: 6.694 min  
 Delta R.T.: 0.003 min  
 Response: 43121368  
 Conc: 50.27 ng/ml

Instrument :  
 ECD\_L  
 ClientSampleId :



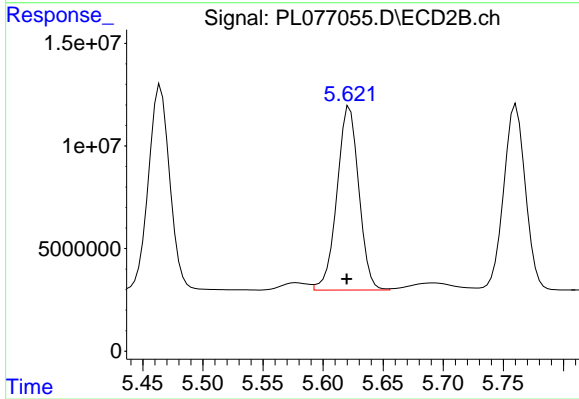
#15 Endosulfan II

R.T.: 5.761 min  
 Delta R.T.: 0.002 min  
 Response: 113386000  
 Conc: 43.29 ng/ml



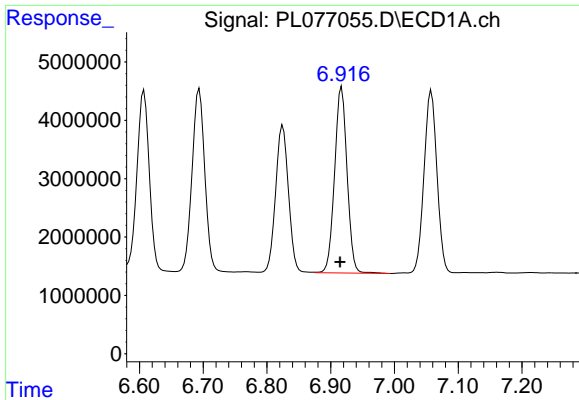
#16 4,4'-DDD

R.T.: 6.607 min  
 Delta R.T.: 0.003 min  
 Response: 42091797  
 Conc: 55.25 ng/ml



#16 4,4'-DDD

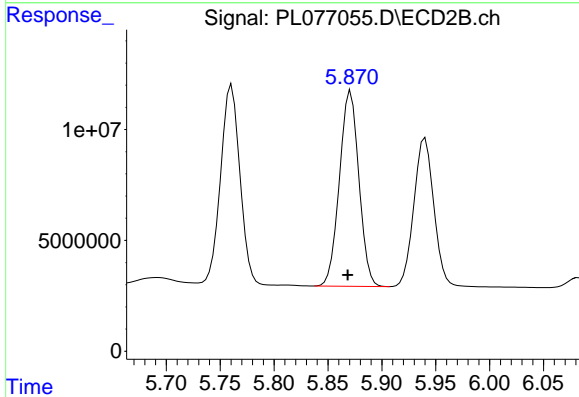
R.T.: 5.622 min  
 Delta R.T.: 0.002 min  
 Response: 113506823  
 Conc: 50.37 ng/ml



#17 4,4'-DDT

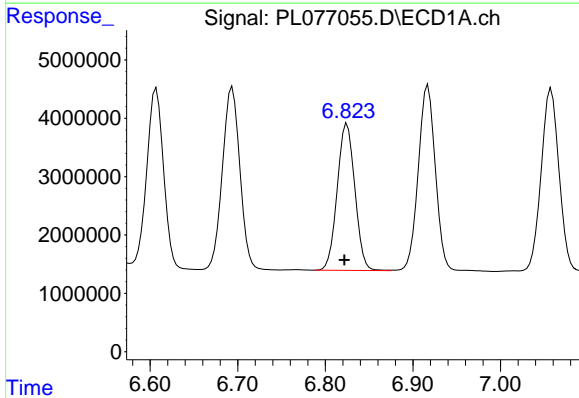
R.T.: 6.917 min  
Delta R.T.: 0.003 min  
Response: 43386088  
Conc: 56.46 ng/ml

Instrument :  
ECD\_L  
ClientSampleId :



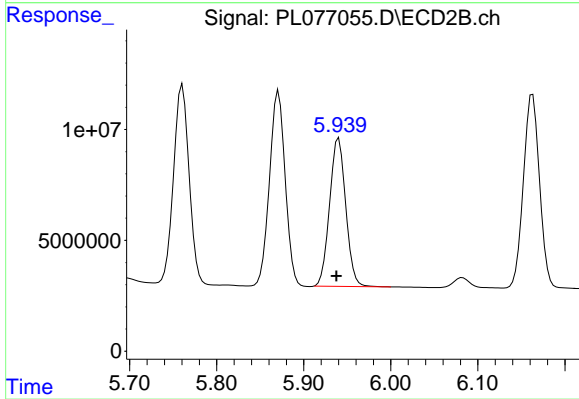
#17 4,4'-DDT

R.T.: 5.871 min  
Delta R.T.: 0.003 min  
Response: 110782737  
Conc: 48.87 ng/ml



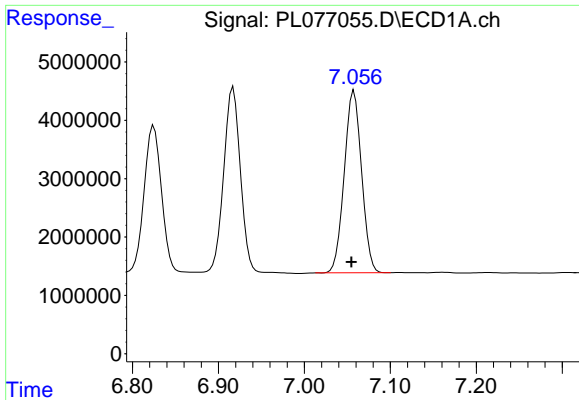
#18 Endrin aldehyde

R.T.: 6.825 min  
Delta R.T.: 0.003 min  
Response: 35200886  
Conc: 48.82 ng/ml



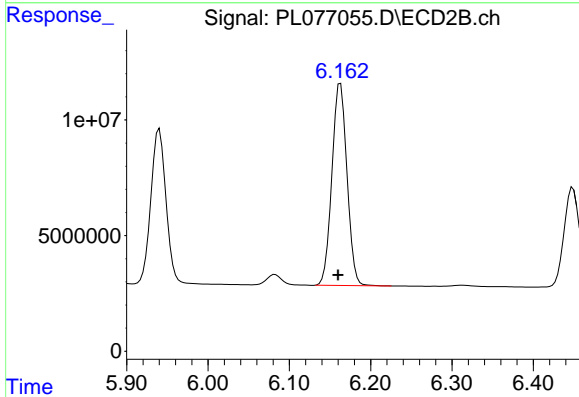
#18 Endrin aldehyde

R.T.: 5.940 min  
Delta R.T.: 0.003 min  
Response: 86120993  
Conc: 43.80 ng/ml

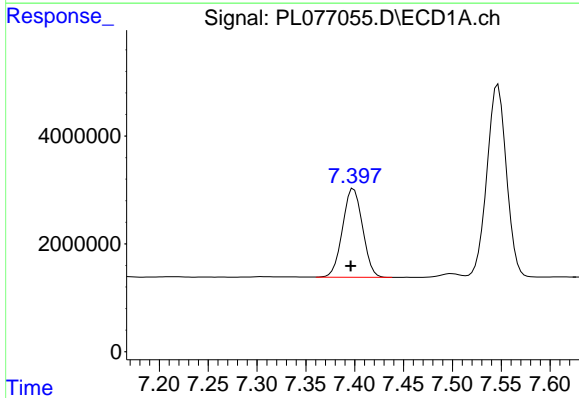


#19 Endosulfan Sulfate  
 R.T.: 7.058 min  
 Delta R.T.: 0.003 min  
 Response: 43848134  
 Conc: 53.04 ng/ml

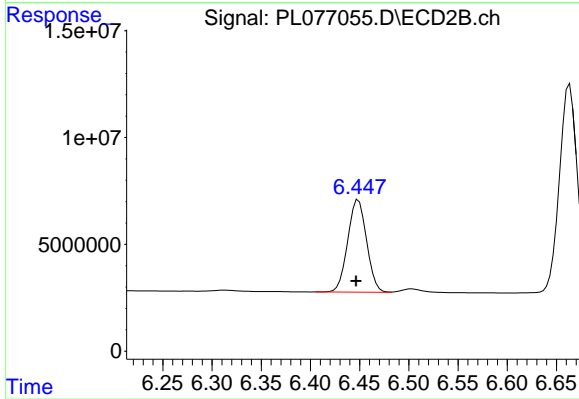
Instrument :  
 ECD\_L  
 ClientSampleId :



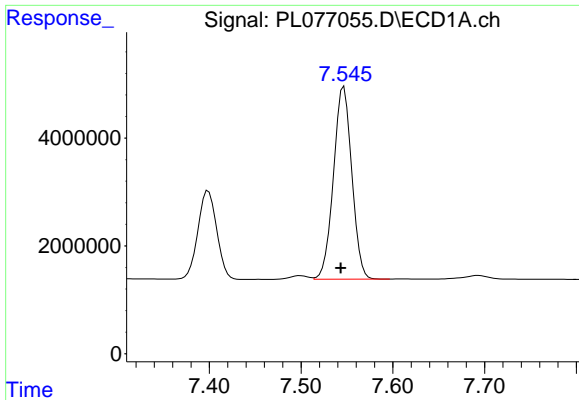
#19 Endosulfan Sulfate  
 R.T.: 6.163 min  
 Delta R.T.: 0.003 min  
 Response: 112705384  
 Conc: 48.85 ng/ml



#20 Methoxychlor  
 R.T.: 7.399 min  
 Delta R.T.: 0.003 min  
 Response: 23503480  
 Conc: 52.95 ng/ml



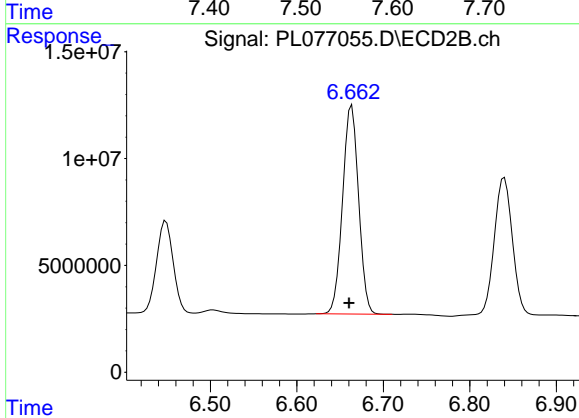
#20 Methoxychlor  
 R.T.: 6.449 min  
 Delta R.T.: 0.003 min  
 Response: 57803101  
 Conc: 48.06 ng/ml



#21 Endrin ketone

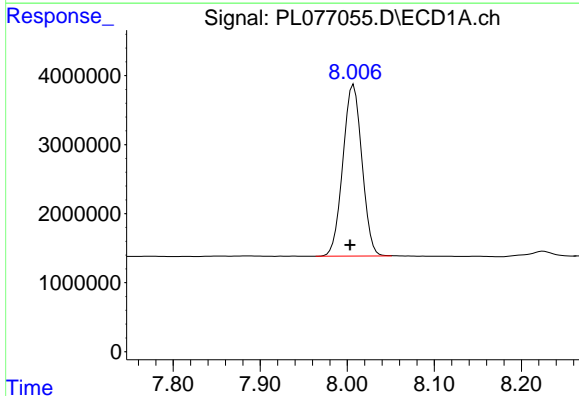
R.T.: 7.547 min  
 Delta R.T.: 0.003 min  
 Response: 49583593  
 Conc: 54.73 ng/ml

Instrument :  
 ECD\_L  
 ClientSampleId :



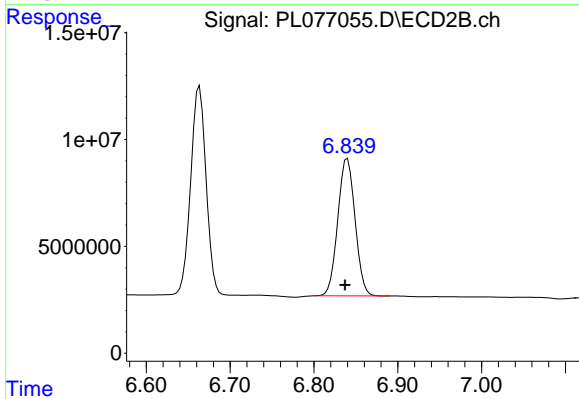
#21 Endrin ketone

R.T.: 6.663 min  
 Delta R.T.: 0.003 min  
 Response: 124980815  
 Conc: 49.13 ng/ml



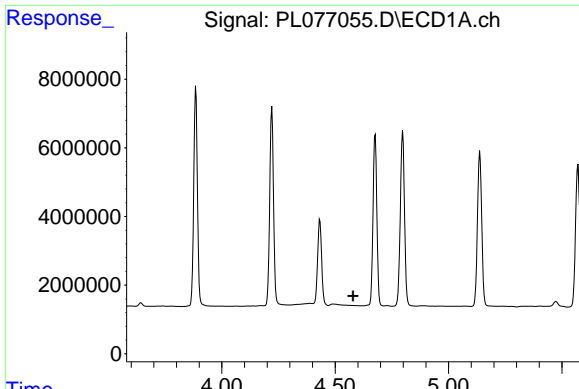
#22 Mirex

R.T.: 8.007 min  
 Delta R.T.: 0.004 min  
 Response: 37851537  
 Conc: 53.87 ng/ml



#22 Mirex

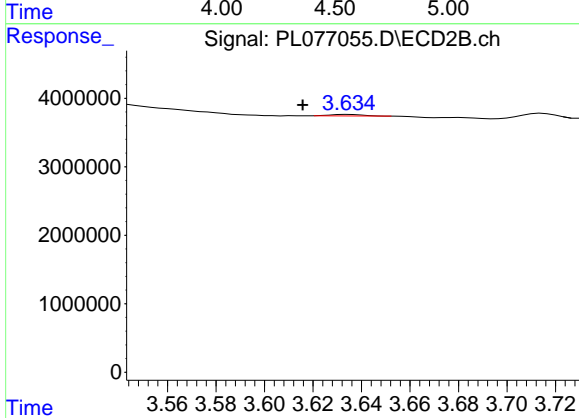
R.T.: 6.840 min  
 Delta R.T.: 0.003 min  
 Response: 92248134  
 Conc: 48.22 ng/ml



#23 Chlordane-1

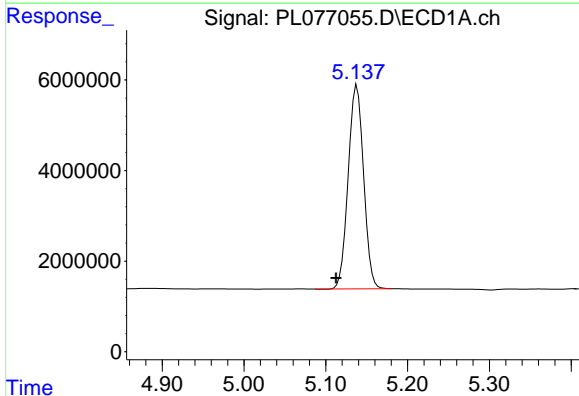
R.T.: 0.000 min  
 Exp R.T.: 4.579 min  
 Response: 0  
 Conc: N.D.

Instrument :  
 ECD\_L  
 ClientSampleId :



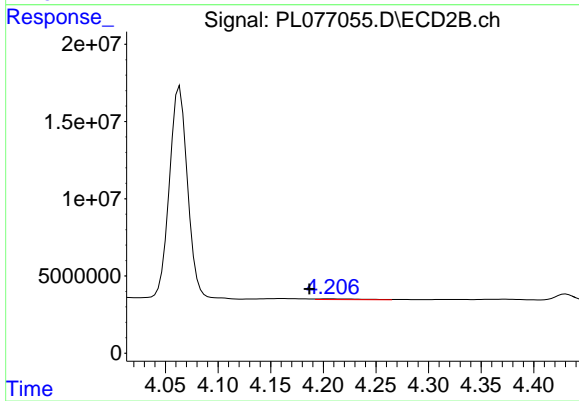
#23 Chlordane-1

R.T.: 3.635 min  
 Delta R.T.: 0.019 min  
 Response: 188770  
 Conc: 1.94 ng/ml



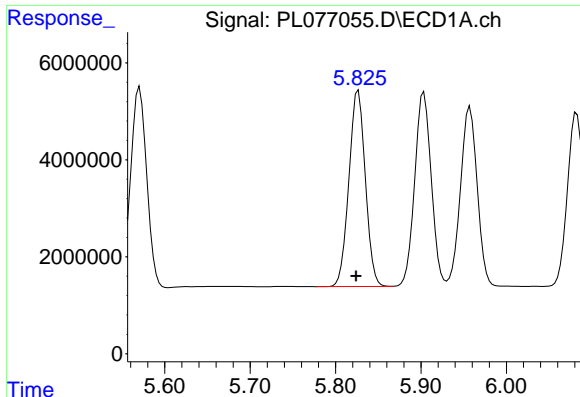
#24 Chlordane-2

R.T.: 5.138 min  
 Delta R.T.: 0.025 min  
 Response: 58639413  
 Conc: 1475.55 ng/ml



#24 Chlordane-2

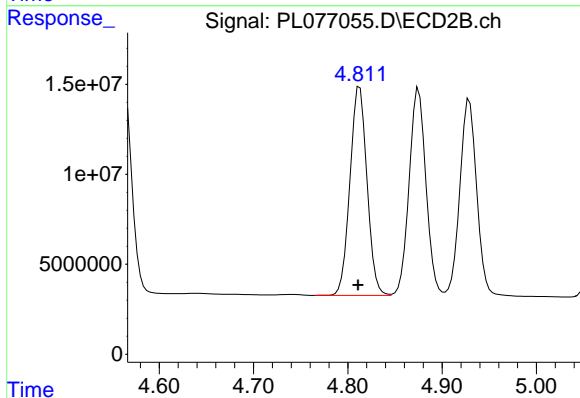
R.T.: 4.205 min  
 Delta R.T.: 0.018 min  
 Response: 1490510  
 Conc: 12.96 ng/ml



#25 Chlordane-3

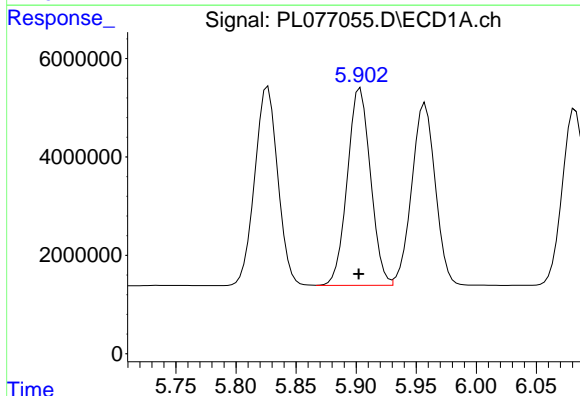
R.T.: 5.827 min  
 Delta R.T.: 0.002 min  
 Response: 54042484  
 Conc: 371.76 ng/ml

Instrument :  
 ECD\_L  
 ClientSampleId :



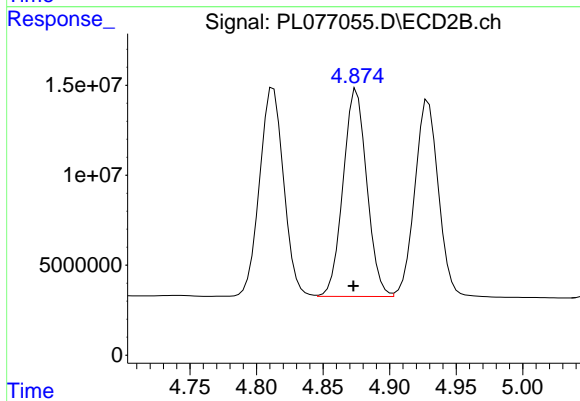
#25 Chlordane-3

R.T.: 4.813 min  
 Delta R.T.: 0.002 min  
 Response: 145974366  
 Conc: 461.06 ng/ml



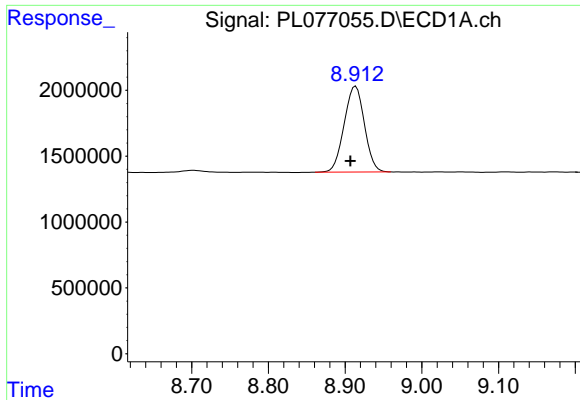
#26 Chlordane-4

R.T.: 5.904 min  
 Delta R.T.: 0.001 min  
 Response: 53977109  
 Conc: 305.74 ng/ml



#26 Chlordane-4

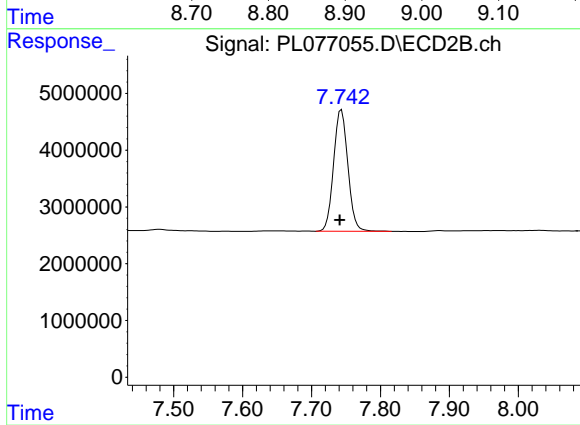
R.T.: 4.875 min  
 Delta R.T.: 0.002 min  
 Response: 142777537  
 Conc: 433.50 ng/ml



#28 Decachlorobiphenyl

R.T.: 8.914 min  
Delta R.T.: 0.007 min  
Response: 12023053  
Conc: 15.93 ng/ml

Instrument :  
ECD\_L  
ClientSampleId :



#28 Decachlorobiphenyl

R.T.: 7.743 min  
Delta R.T.: 0.002 min  
Response: 30871075  
Conc: 13.71 ng/ml