

Data Path : Z:\pestpcbsrv\HPCHEM1\ECD_L\Data\PL081222\
 Data File : PL077075.D
 Signal(s) : Signal #1: ECD1A.ch Signal #2: ECD2B.ch
 Acq On : 12 Aug 2022 20:33
 Operator : AR\AJ
 Sample : PB146967BL
 Misc :
 ALS Vial : 26 Sample Multiplier: 1

Instrument :
 ECD_L
 ClientSampleId :

Integration File signal 1: autoint1.e
 Integration File signal 2: autoint2.e
 Quant Time: Aug 12 22:30:54 2022
 Quant Method : Z:\pestpcbsrv\HPCHEM1\ECD_L\methods\PL080822.M
 Quant Title : GC Extractables
 QLast Update : Tue Aug 09 09:13:15 2022
 Response via : Initial Calibration
 Integrator: ChemStation

Volume Inj. : 1 µl
 Signal #1 Phase : ZB-MR2 Signal #2 Phase: ZB-MR1
 Signal #1 Info : 30M x 0.32mm x0.2 Signal #2 Info : 30M x 0.32mm x0.5µm

Compound	RT#1	RT#2	Resp#1	Resp#2	ng/ml	ng/ml
System Monitoring Compounds						
1) SA Tetrachlo...	3.419	2.636	16635116	45383057	16.965	15.854
28) SA Decachlor...	8.907	7.739	15535403	41387357	20.578	18.384
Target Compounds						
5) MB Aldrin	0.000	4.066	0	114999	N.D.	0.032 #

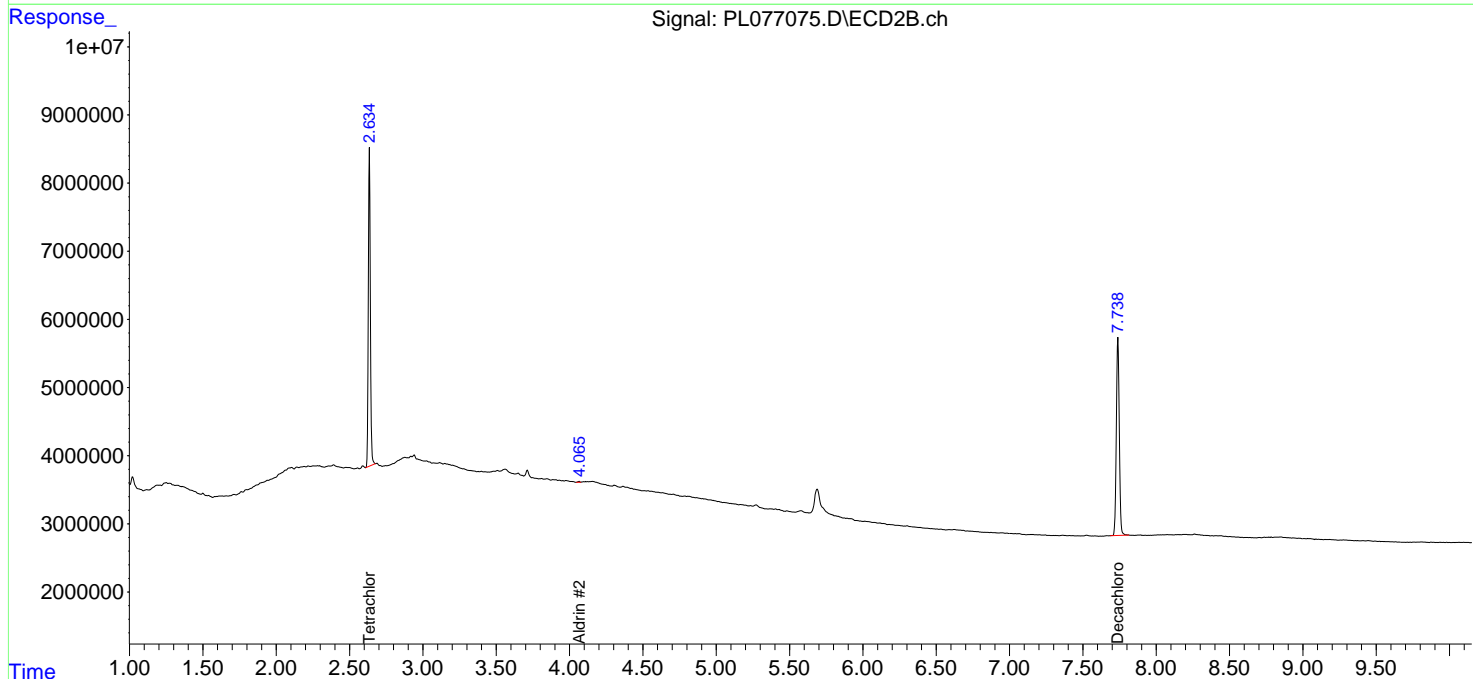
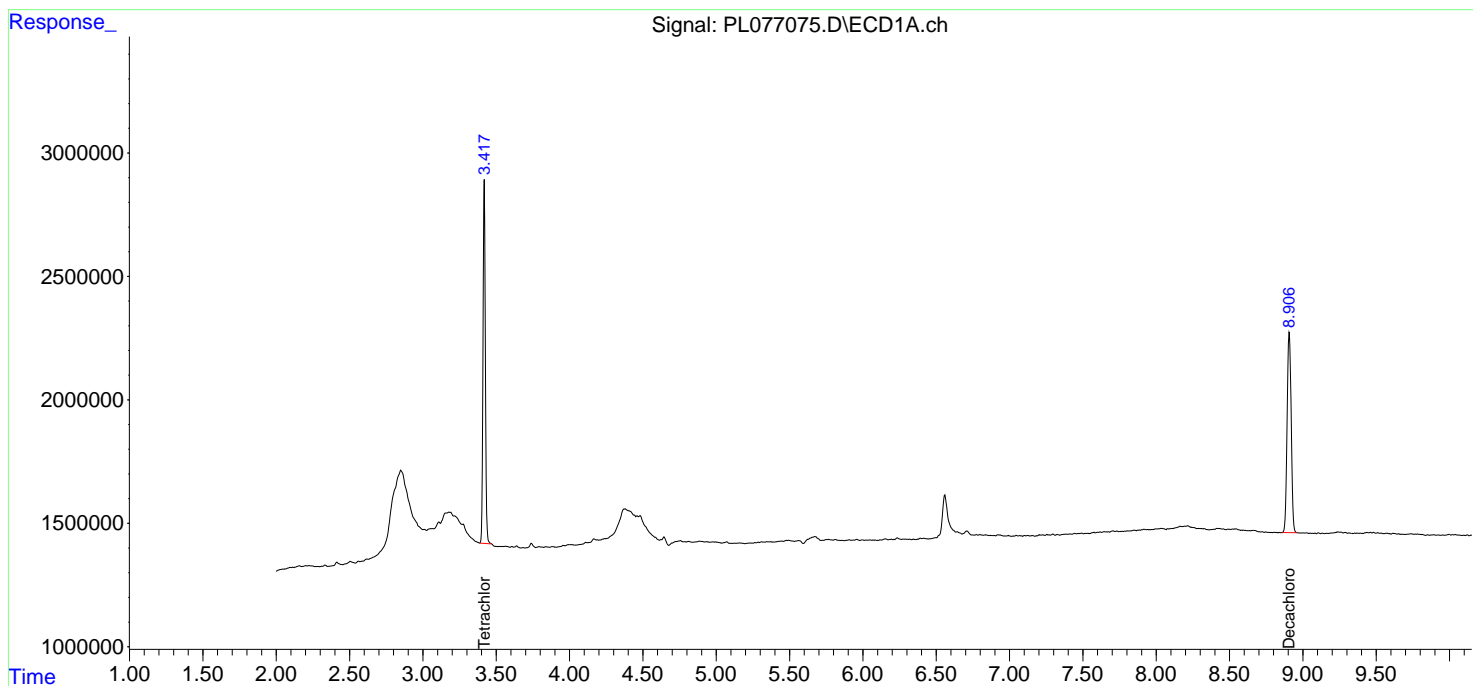
(f)=RT Delta > 1/2 Window (#)=Amounts differ by > 25% (m)=manual int.

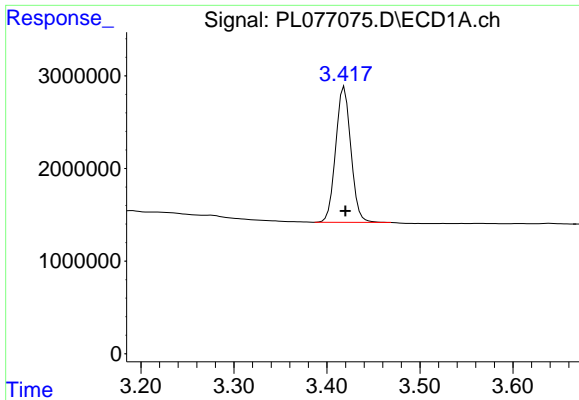
Data Path : Z:\pestpcbsrv\HPCHEM1\ECD_L\Data\PL081222\
 Data File : PL077075.D
 Signal(s) : Signal #1: ECD1A.ch Signal #2: ECD2B.ch
 Acq On : 12 Aug 2022 20:33
 Operator : AR\AJ
 Sample : PB146967BL
 Misc :
 ALS Vial : 26 Sample Multiplier: 1

Instrument :
 ECD_L
 ClientSampleId :

Integration File signal 1: autoint1.e
 Integration File signal 2: autoint2.e
 Quant Time: Aug 12 22:30:54 2022
 Quant Method : Z:\pestpcbsrv\HPCHEM1\ECD_L\methods\PL080822.M
 Quant Title : GC Extractables
 QLast Update : Tue Aug 09 09:13:15 2022
 Response via : Initial Calibration
 Integrator: ChemStation

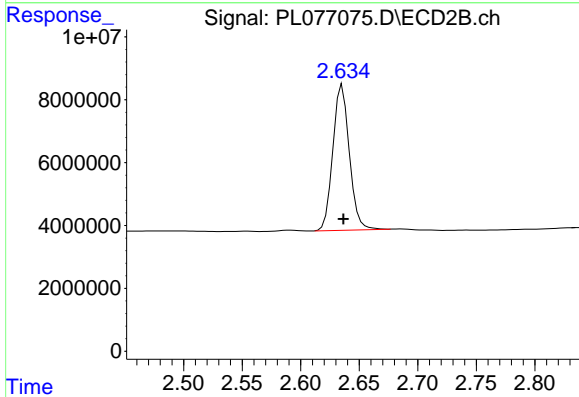
Volume Inj. : 1 µl
 Signal #1 Phase : ZB-MR2 Signal #2 Phase: ZB-MR1
 Signal #1 Info : 30M x 0.32mm x0.2 Signal #2 Info : 30M x 0.32mm x0.5µm



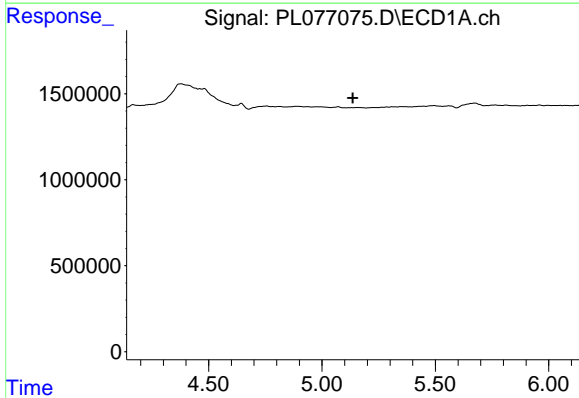


#1 Tetrachloro-m-xylene
 R.T.: 3.419 min
 Delta R.T.: -0.001 min
 Response: 16635116
 Conc: 16.97 ng/ml

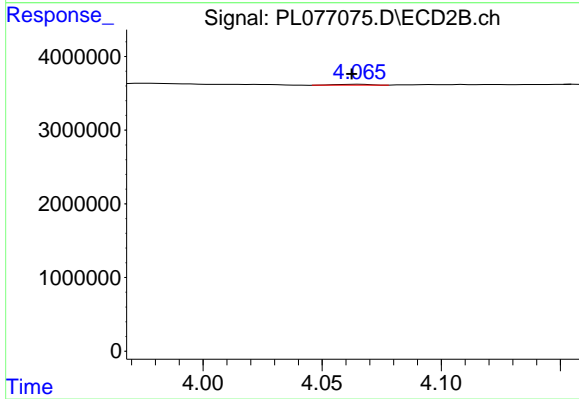
Instrument :
 ECD_L
 ClientSampleId :



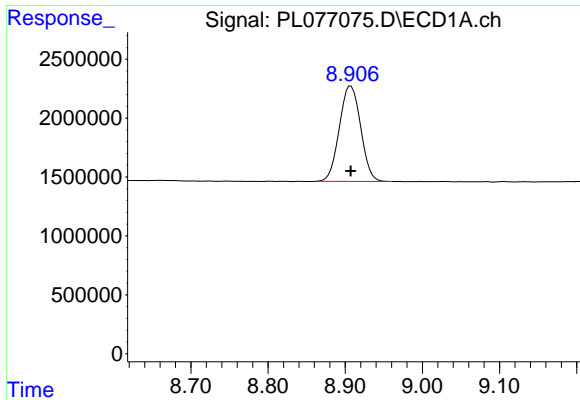
#1 Tetrachloro-m-xylene
 R.T.: 2.636 min
 Delta R.T.: 0.000 min
 Response: 45383057
 Conc: 15.85 ng/ml



#5 Aldrin
 R.T.: 0.000 min
 Exp R.T. : 5.136 min
 Response: 0
 Conc: N.D.



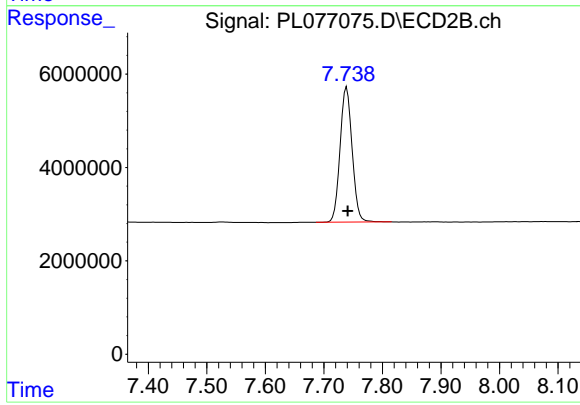
#5 Aldrin
 R.T.: 4.066 min
 Delta R.T.: 0.004 min
 Response: 114999
 Conc: 0.03 ng/ml



#28 Decachlorobiphenyl

R.T.: 8.907 min
Delta R.T.: 0.000 min
Response: 15535403
Conc: 20.58 ng/ml

Instrument :
ECD_L
ClientSampleId :



#28 Decachlorobiphenyl

R.T.: 7.739 min
Delta R.T.: -0.002 min
Response: 41387357
Conc: 18.38 ng/ml