

Data Path : Z:\pestpcbsrv\HPCHEM1\ECD\_L\Data\PL081222\  
 Data File : PL077080.D  
 Signal(s) : Signal #1: ECD1A.ch Signal #2: ECD2B.ch  
 Acq On : 12 Aug 2022 21:42  
 Operator : AR\AJ  
 Sample : N4167-01  
 Misc :  
 ALS Vial : 7 Sample Multiplier: 1

Instrument :  
 ECD\_L  
 ClientSampleId :

Integration File signal 1: autoint1.e  
 Integration File signal 2: autoint2.e  
 Quant Time: Aug 12 22:32:11 2022  
 Quant Method : Z:\pestpcbsrv\HPCHEM1\ECD\_L\methods\PL080822.M  
 Quant Title : GC Extractables  
 QLast Update : Tue Aug 09 09:13:15 2022  
 Response via : Initial Calibration  
 Integrator: ChemStation

Volume Inj. : 1 µl  
 Signal #1 Phase : ZB-MR2 Signal #2 Phase: ZB-MR1  
 Signal #1 Info : 30M x 0.32mm x0.2 Signal #2 Info : 30M x 0.32mm x0.5µm

	Compound	RT#1	RT#2	Resp#1	Resp#2	ng/ml	ng/ml
-----							
System Monitoring Compounds							
1)	SA Tetrachlo...	3.419	2.636	11829803	31682567	12.064	11.068
28)	SA Decachlor...	8.906	7.739	14761431	38208872	19.553	16.973
Target Compounds							
3)	MA gamma-BHC...	4.220	0.000	62972	0	0.049	N.D. #
4)	MA Heptachlor	4.819f	0.000	211408	0	0.172	N.D. #
5)	MB Aldrin	0.000	4.034f	0	297072	N.D.	0.084 #
6)	B beta-BHC	0.000	3.731f	0	630692	N.D.	0.404 #
8)	B Heptachlo...	5.571	0.000	1128968	0	1.118	N.D. #
10)	B gamma-Chl...	0.000	4.788f	0	154714	N.D.	0.051 #
13)	MA Dieldrin	0.000	5.181	0	204203	N.D.	0.068 #
14)	MA Endrin	0.000	5.484f	0	2198479	N.D.	0.865 #
15)	B Endosulfa...	6.711f	0.000	238366	0	0.278	N.D. #
22)	Mirex	7.985f	0.000	114849	0	0.163	N.D. #
25)	Chlordane-3	0.000	4.788f	0	154714	N.D.	0.489 #

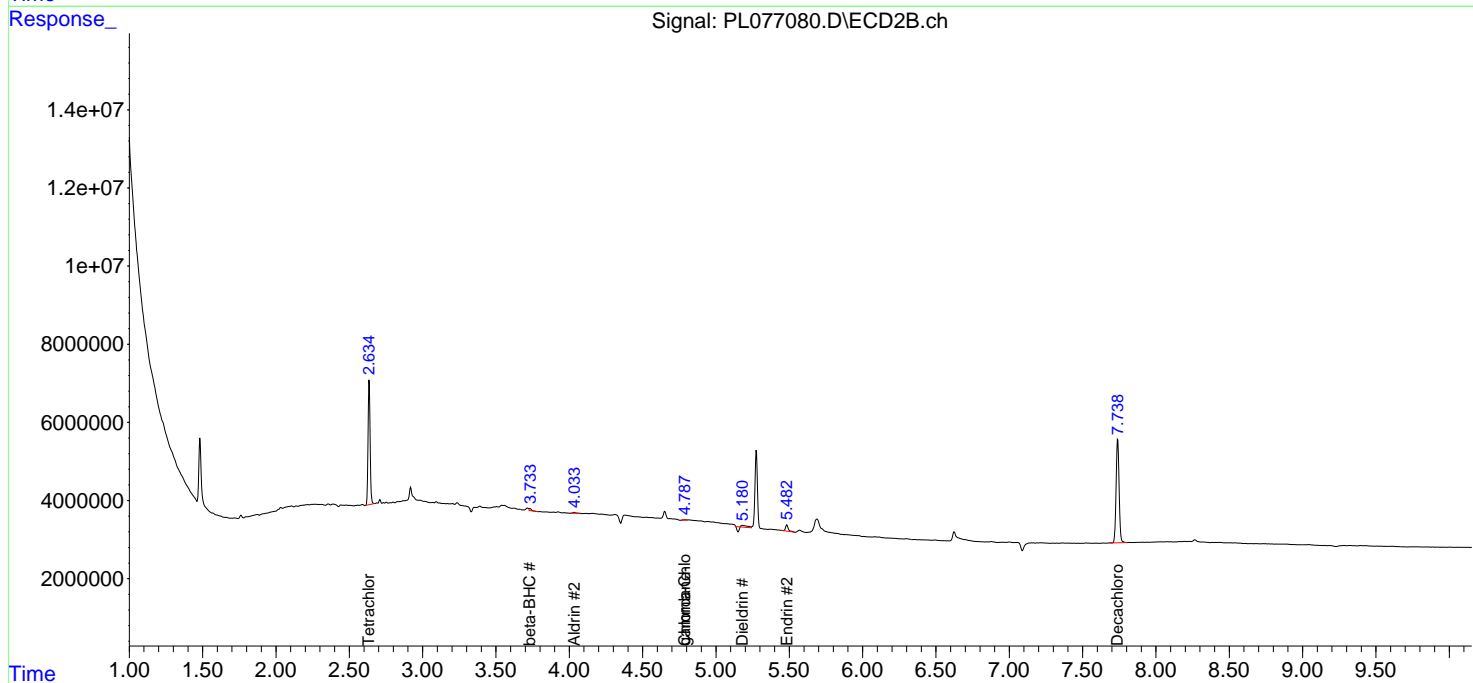
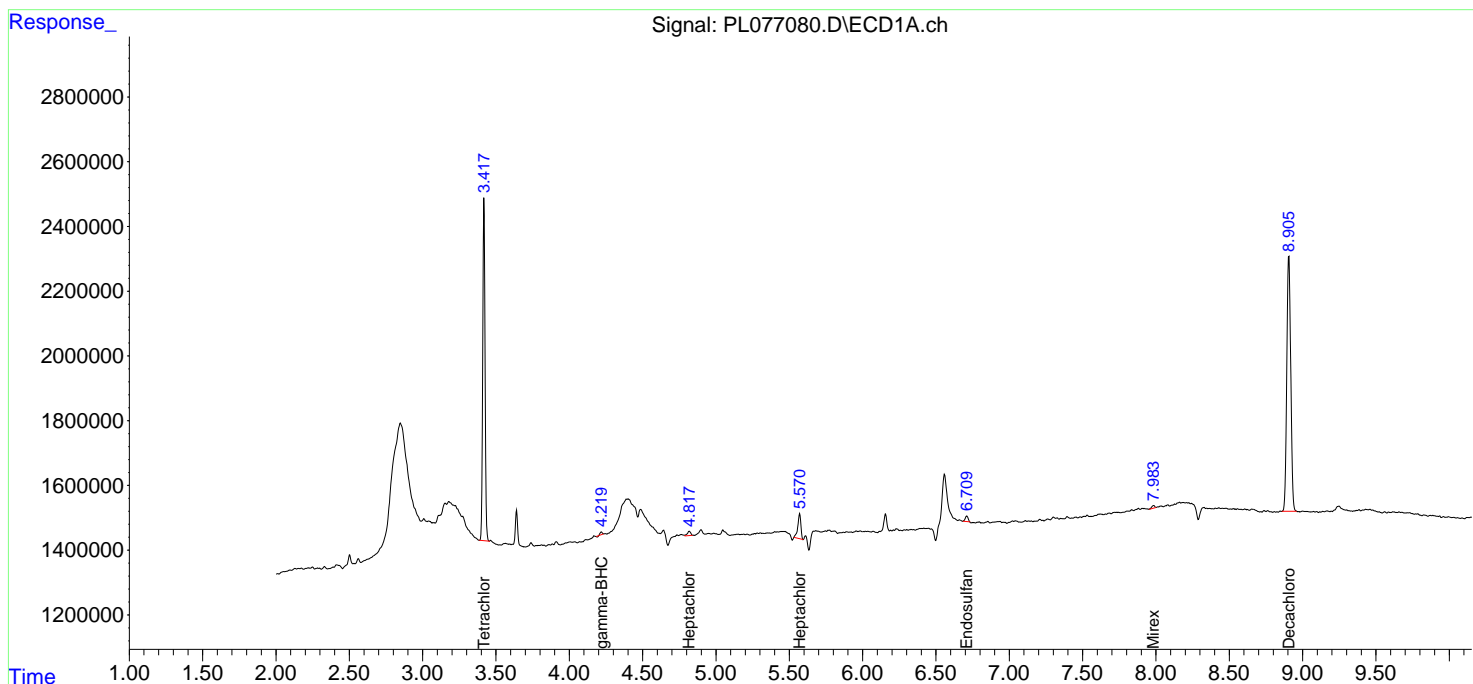
(f)=RT Delta > 1/2 Window (#)=Amounts differ by > 25% (m)=manual int.

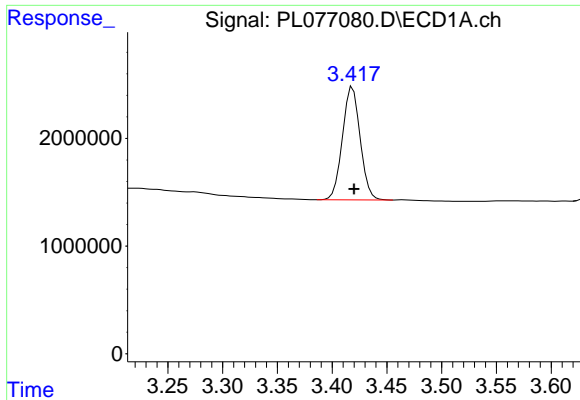
Data Path : Z:\pestpcbsrv\HPCHEM1\ECD\_L\Data\PL081222\  
 Data File : PL077080.D  
 Signal(s) : Signal #1: ECD1A.ch Signal #2: ECD2B.ch  
 Acq On : 12 Aug 2022 21:42  
 Operator : AR\AJ  
 Sample : N4167-01  
 Misc :  
 ALS Vial : 7 Sample Multiplier: 1

Instrument :  
 ECD\_L  
 ClientSampleId :

Integration File signal 1: autoint1.e  
 Integration File signal 2: autoint2.e  
 Quant Time: Aug 12 22:32:11 2022  
 Quant Method : Z:\pestpcbsrv\HPCHEM1\ECD\_L\methods\PL080822.M  
 Quant Title : GC Extractables  
 QLast Update : Tue Aug 09 09:13:15 2022  
 Response via : Initial Calibration  
 Integrator: ChemStation

Volume Inj. : 1 µl  
 Signal #1 Phase : ZB-MR2 Signal #2 Phase: ZB-MR1  
 Signal #1 Info : 30M x 0.32mm x0.2 Signal #2 Info : 30M x 0.32mm x0.5µm

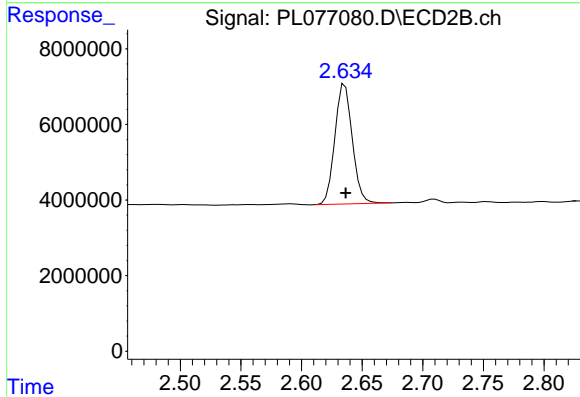




#1 Tetrachloro-m-xylene

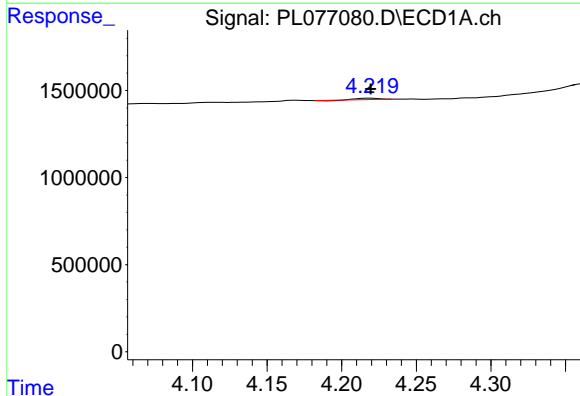
R.T.: 3.419 min  
 Delta R.T.: -0.001 min  
 Response: 11829803  
 Conc: 12.06 ng/ml

Instrument :  
 ECD\_L  
 ClientSampleId :



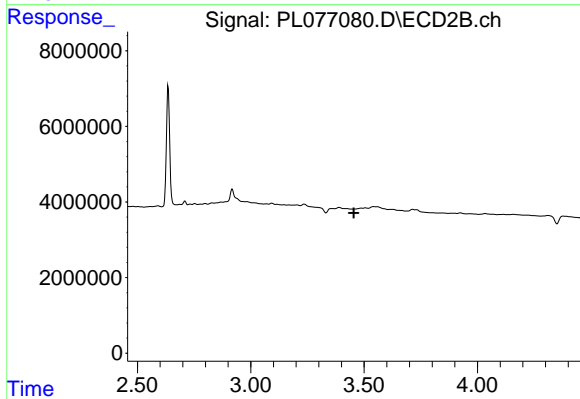
#1 Tetrachloro-m-xylene

R.T.: 2.636 min  
 Delta R.T.: 0.000 min  
 Response: 31682567  
 Conc: 11.07 ng/ml



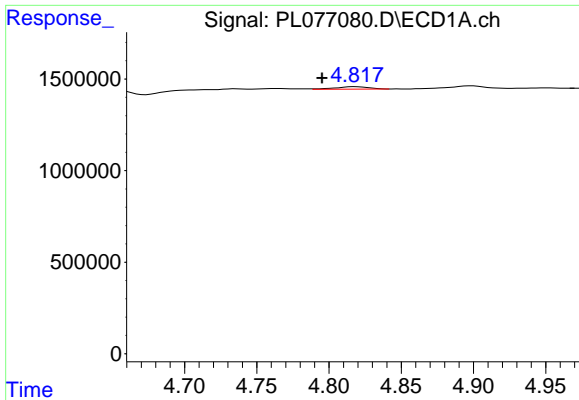
#3 gamma-BHC (Lindane)

R.T.: 4.220 min  
 Delta R.T.: 0.000 min  
 Response: 62972  
 Conc: 0.05 ng/ml



#3 gamma-BHC (Lindane)

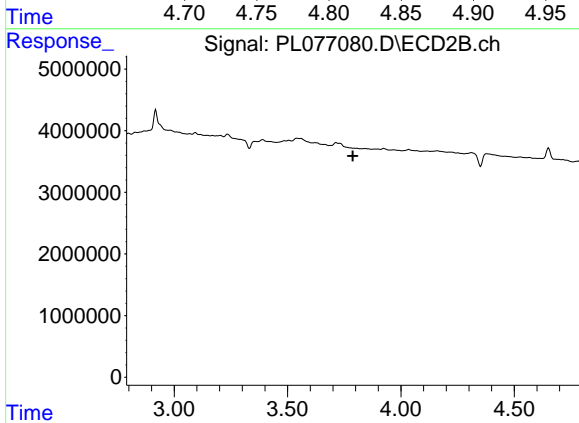
R.T.: 0.000 min  
 Exp R.T. : 3.454 min  
 Response: 0  
 Conc: N.D.



#4 Heptachlor

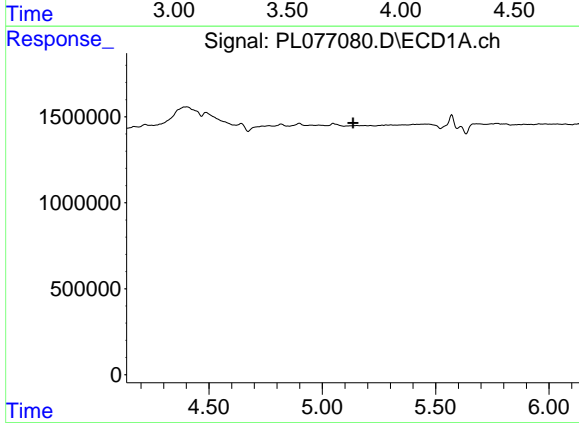
R.T.: 4.819 min  
 Delta R.T.: 0.024 min  
 Response: 211408  
 Conc: 0.17 ng/ml

Instrument :  
 ECD\_L  
 ClientSampleId :



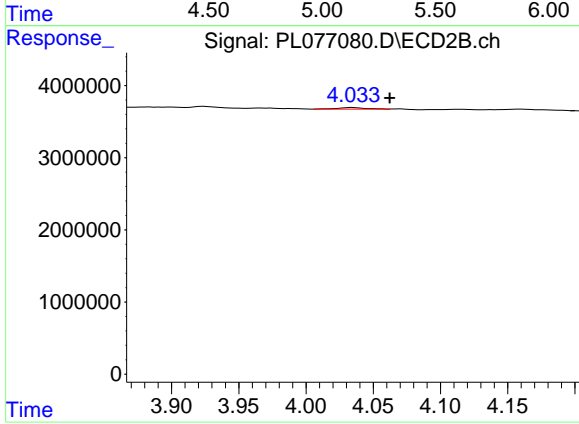
#4 Heptachlor

R.T.: 0.000 min  
 Exp R.T. : 3.788 min  
 Response: 0  
 Conc: N.D.



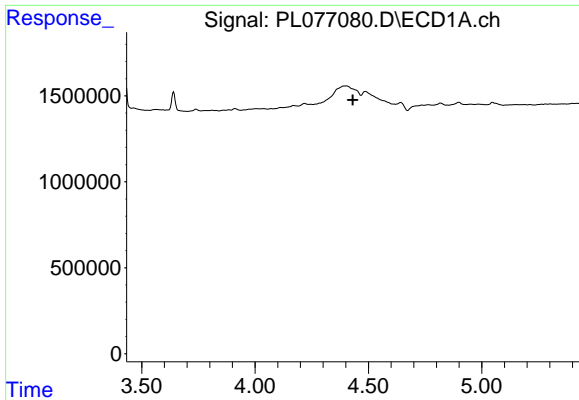
#5 Aldrin

R.T.: 0.000 min  
 Exp R.T. : 5.136 min  
 Response: 0  
 Conc: N.D.



#5 Aldrin

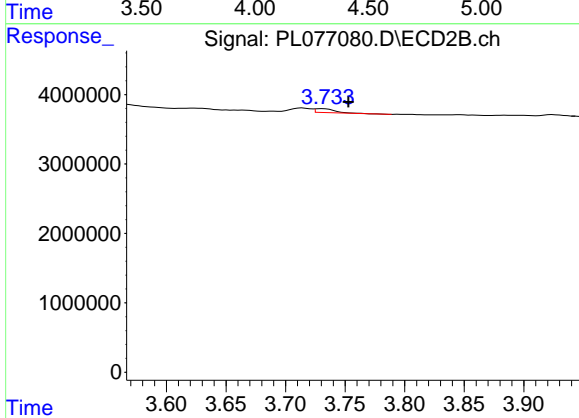
R.T.: 4.034 min  
 Delta R.T.: -0.028 min  
 Response: 297072  
 Conc: 0.08 ng/ml



#6 beta-BHC

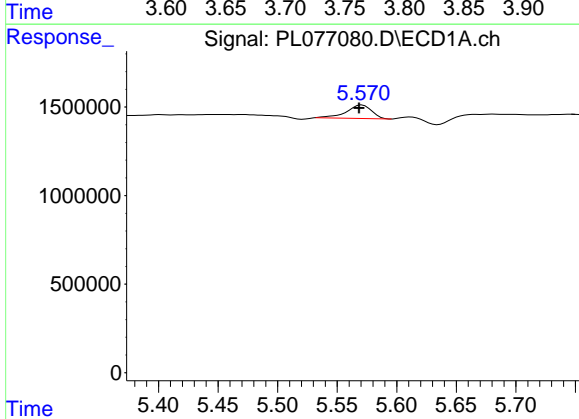
R.T.: 0.000 min  
 Exp R.T.: 4.431 min  
 Response: 0  
 Conc: N.D.

Instrument :  
 ECD\_L  
 ClientSampleId :



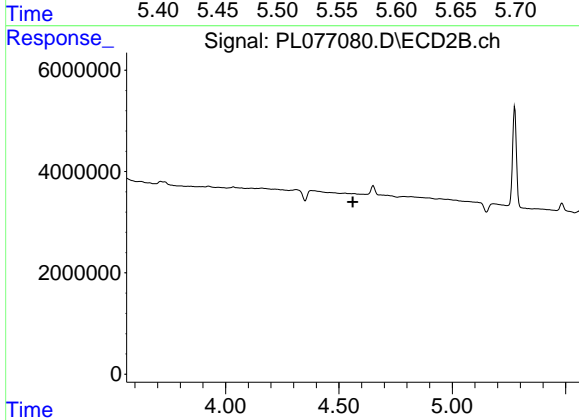
#6 beta-BHC

R.T.: 3.731 min  
 Delta R.T.: -0.022 min  
 Response: 630692  
 Conc: 0.40 ng/ml



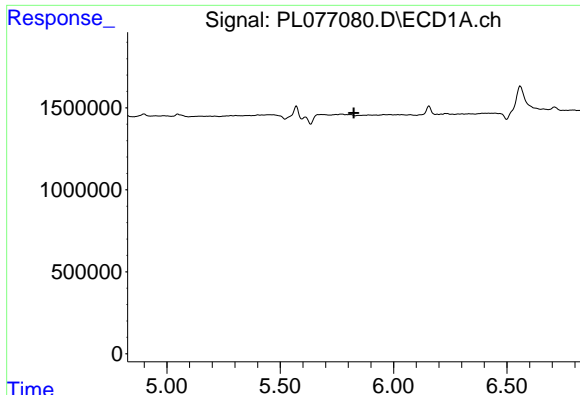
#8 Heptachlor epoxide

R.T.: 5.571 min  
 Delta R.T.: 0.003 min  
 Response: 1128968  
 Conc: 1.12 ng/ml



#8 Heptachlor epoxide

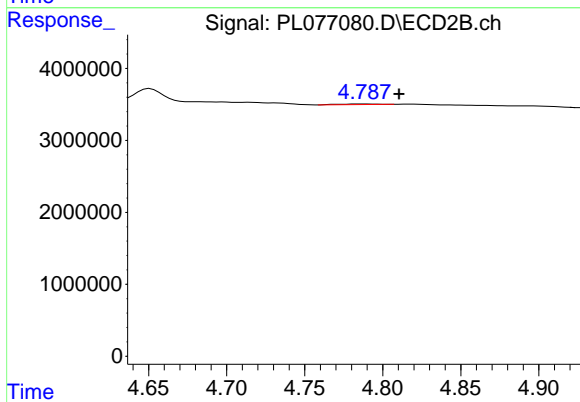
R.T.: 0.000 min  
 Exp R.T.: 4.561 min  
 Response: 0  
 Conc: N.D.



#10 gamma-Chlordane

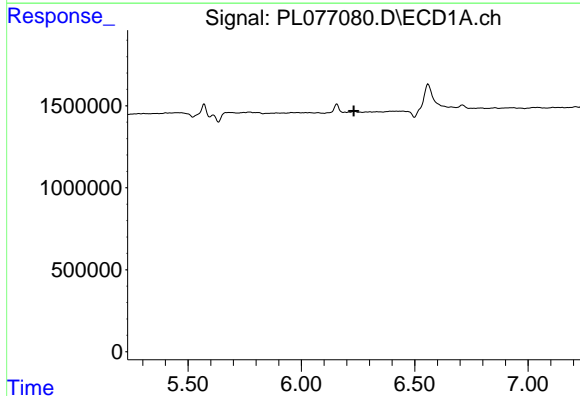
R.T.: 0.000 min  
 Exp R.T. : 5.824 min  
 Response: 0  
 Conc: N.D.

Instrument :  
 ECD\_L  
 ClientSampleId :



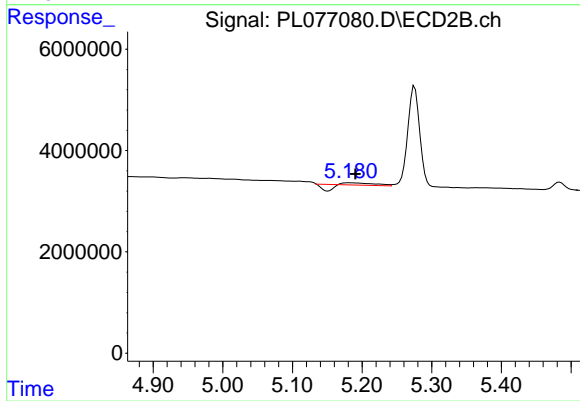
#10 gamma-Chlordane

R.T.: 4.788 min  
 Delta R.T.: -0.022 min  
 Response: 154714  
 Conc: 0.05 ng/ml



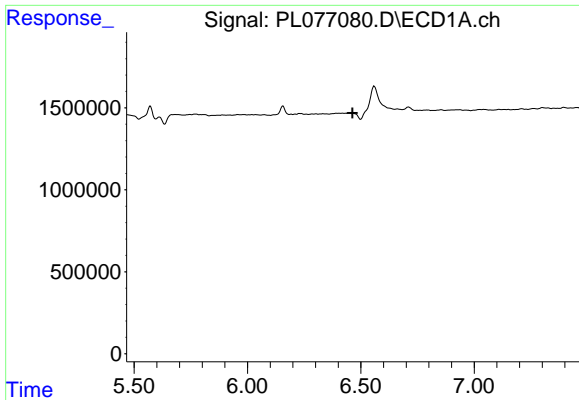
#13 Dieldrin

R.T.: 0.000 min  
 Exp R.T. : 6.232 min  
 Response: 0  
 Conc: N.D.



#13 Dieldrin

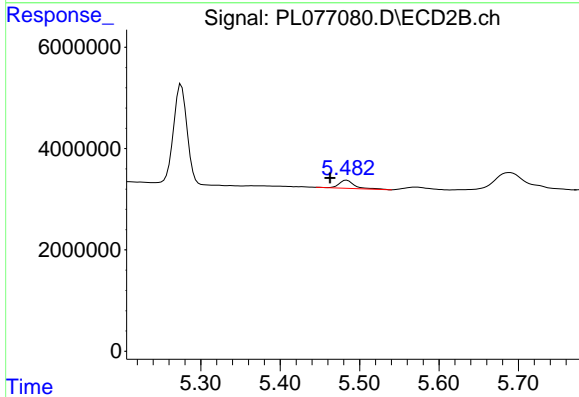
R.T.: 5.181 min  
 Delta R.T.: -0.010 min  
 Response: 204203  
 Conc: 0.07 ng/ml



#14 Endrin

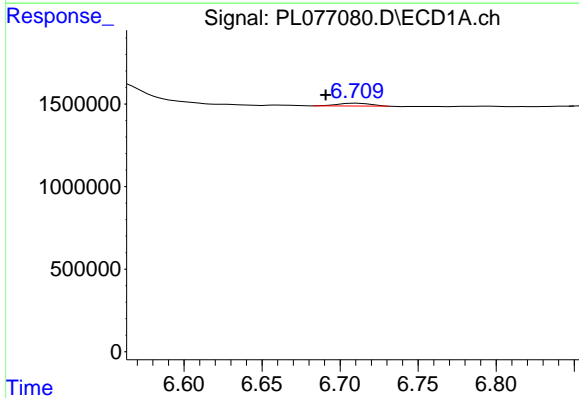
R.T.: 0.000 min  
 Exp R.T.: 6.463 min  
 Response: 0  
 Conc: N.D.

Instrument :  
 ECD\_L  
 ClientSampleId :



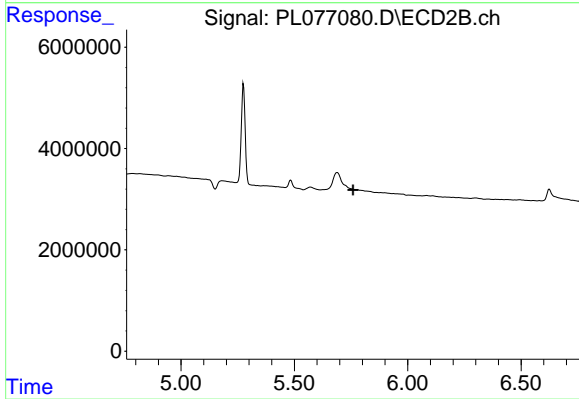
#14 Endrin

R.T.: 5.484 min  
 Delta R.T.: 0.021 min  
 Response: 2198479  
 Conc: 0.87 ng/ml



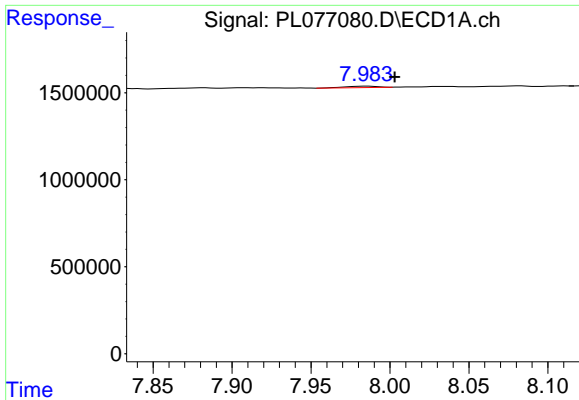
#15 Endosulfan II

R.T.: 6.711 min  
 Delta R.T.: 0.020 min  
 Response: 238366  
 Conc: 0.28 ng/ml



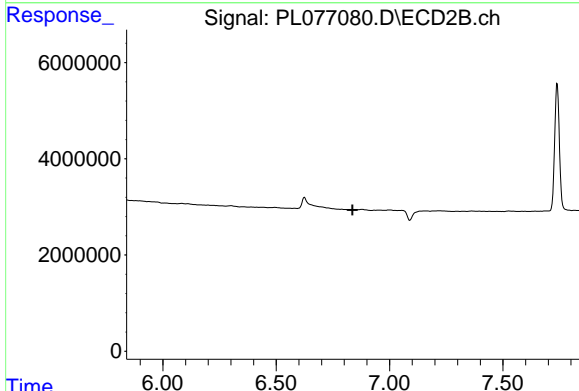
#15 Endosulfan II

R.T.: 0.000 min  
 Exp R.T.: 5.759 min  
 Response: 0  
 Conc: N.D.

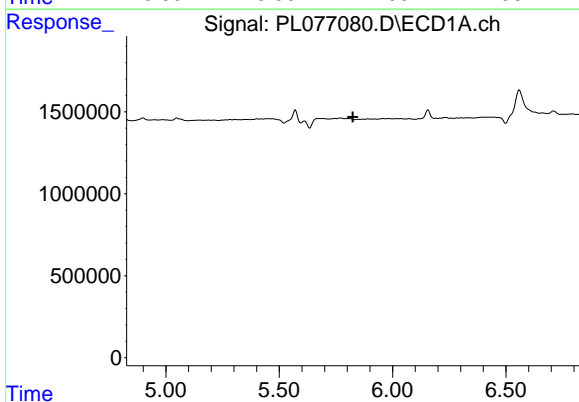


#22 Mirex  
 R.T.: 7.985 min  
 Delta R.T.: -0.018 min  
 Response: 114849  
 Conc: 0.16 ng/ml

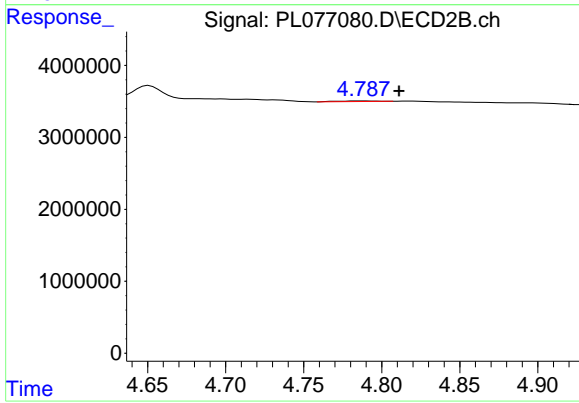
Instrument :  
 ECD\_L  
 ClientSampleId :



#22 Mirex  
 R.T.: 0.000 min  
 Exp R.T. : 6.837 min  
 Response: 0  
 Conc: N.D.

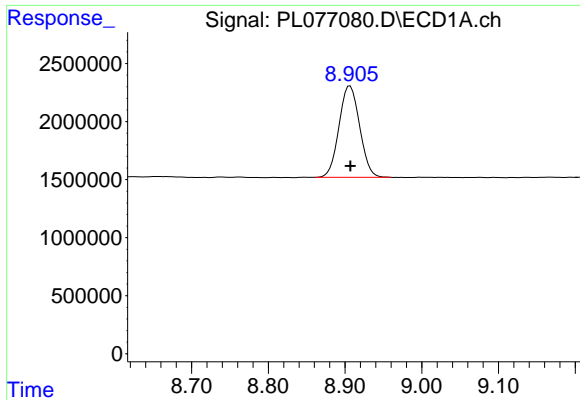


#25 Chlordane-3  
 R.T.: 0.000 min  
 Exp R.T. : 5.824 min  
 Response: 0  
 Conc: N.D.



#25 Chlordane-3  
 R.T.: 4.788 min  
 Delta R.T.: -0.023 min  
 Response: 154714  
 Conc: 0.49 ng/ml

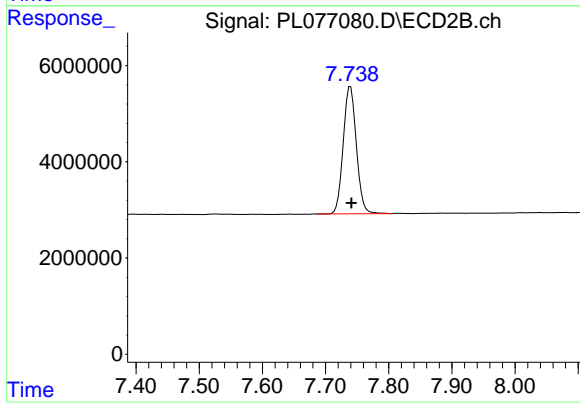




#28 Decachlorobiphenyl

R.T.: 8.906 min  
Delta R.T.: 0.000 min  
Response: 14761431  
Conc: 19.55 ng/ml

Instrument :  
ECD\_L  
ClientSampleId :



#28 Decachlorobiphenyl

R.T.: 7.739 min  
Delta R.T.: -0.002 min  
Response: 38208872  
Conc: 16.97 ng/ml