

Data Path : Z:\pestpcbsrv\HPCHEM1\ECD_L\Data\PL081321\
 Data File : PL068957.D
 Signal(s) : Signal #1: ECD1A.ch Signal #2: ECD2B.ch
 Acq On : 13 Aug 2021 13:40
 Operator : AR\AJ
 Sample : M3389-06
 Misc :
 ALS Vial : 8 Sample Multiplier: 1

Instrument :
 ECD_L
 ClientSampleId :

Integration File signal 1: autoint1.e
 Integration File signal 2: autoint2.e
 Quant Time: Aug 14 05:45:54 2021
 Quant Method : Z:\pestpcbsrv\HPCHEM1\ECD_L\methods\PL080521.M
 Quant Title : GC Extractables
 QLast Update : Fri Aug 06 03:02:43 2021
 Response via : Initial Calibration
 Integrator: ChemStation

Volume Inj. : 1 µl
 Signal #1 Phase : ZB-MR2 Signal #2 Phase: ZB-MR1
 Signal #1 Info : 30M x 0.32mm x0.2 Signal #2 Info : 30M x 0.32mm x0.5µm

Compound	RT#1	RT#2	Resp#1	Resp#2	ng/ml	ng/ml

System Monitoring Compounds						
1) SA Tetrachlo...	4.637	5.568	9114529	24800794	22.035	24.426
28) SA Decachlor...	10.406	11.489	13259093	22745140	23.072	23.443
Target Compounds						
2) A alpha-BHC	5.376f	0.000	3427956	0	6.197	N.D. #
9) A Endosulfan I	7.505f	0.000	428921	0	0.845	N.D. #
10) B gamma-Chl...	0.000	8.297	0	510465	N.D.	0.446 #
11) B alpha-Chl...	0.000	8.382	0	497650	N.D.	0.433 #
12) B 4,4'-DDE	0.000	8.563	0	191892	N.D.	0.182 #
13) MA Dieldrin	7.775	0.000	293081	0	0.567	N.D. #
14) MA Endrin	8.081f	0.000	621567	0	1.290	N.D. #
15) B Endosulfa...	0.000	9.216	0	1038415	N.D.	1.132 #
16) A 4,4'-DDD	0.000	9.104	0	592370	N.D.	0.693 #
20) A Methoxychlor	9.103f	0.000	81379	0	0.260	N.D. #
23) Chlordane-1	0.000	6.969	0	681460	N.D.	16.160 #
25) Chlordane-3	0.000	8.297	0	510465	N.D.	3.125 #
26) Chlordane-4	0.000	8.382	0	497650	N.D.	2.509 #

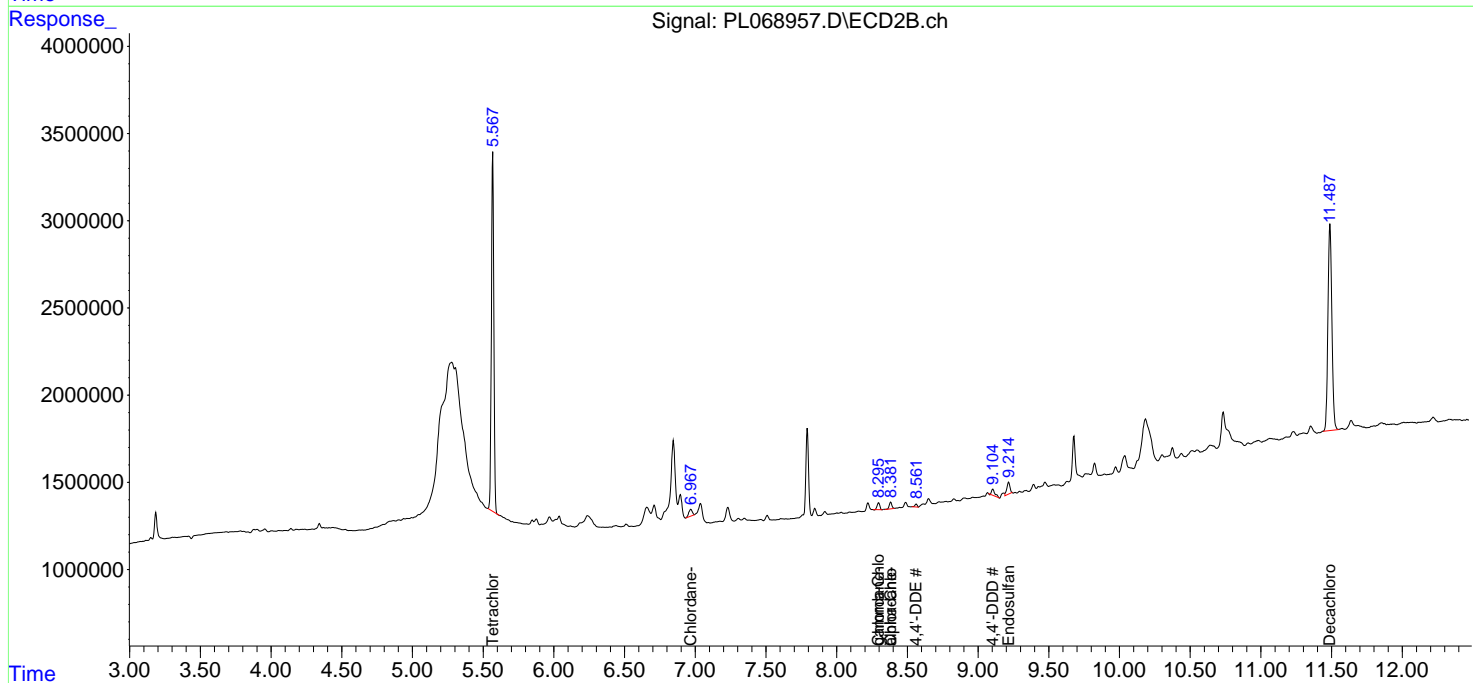
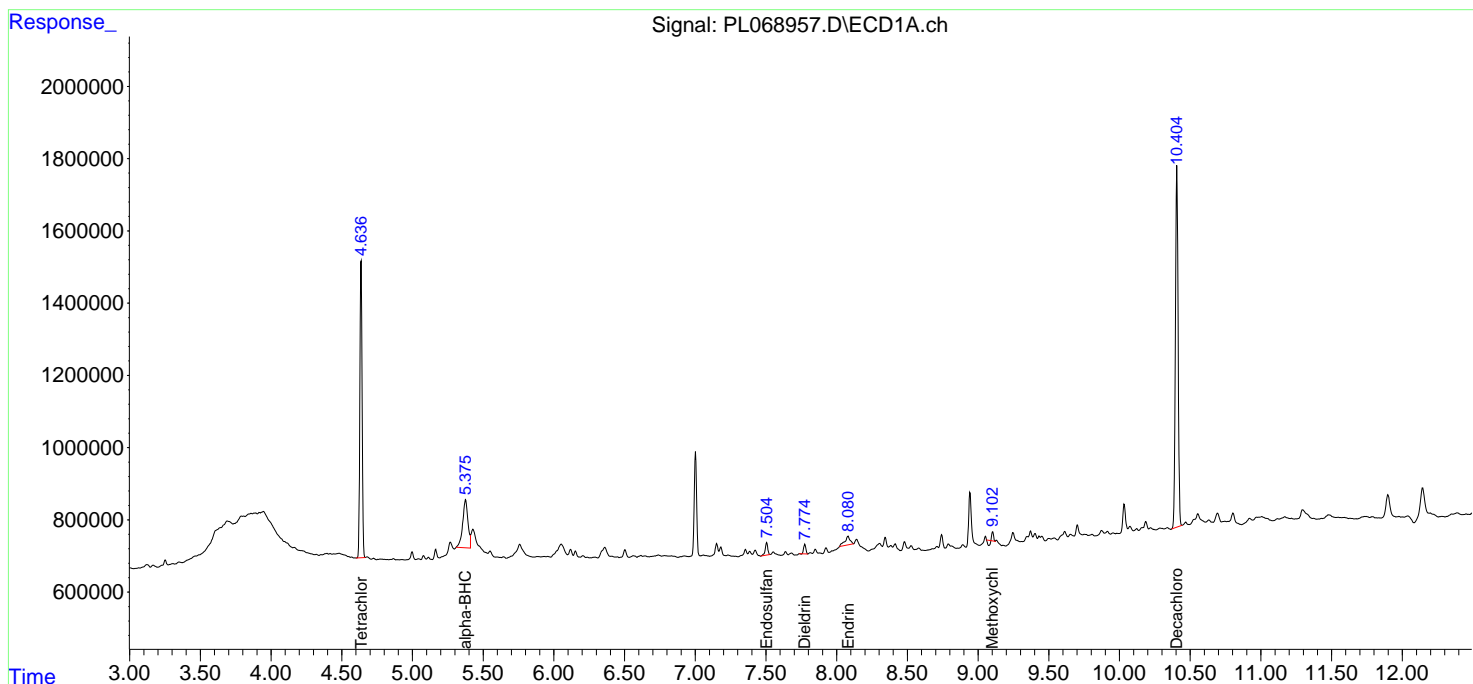
(f)=RT Delta > 1/2 Window (#)=Amounts differ by > 25% (m)=manual int.

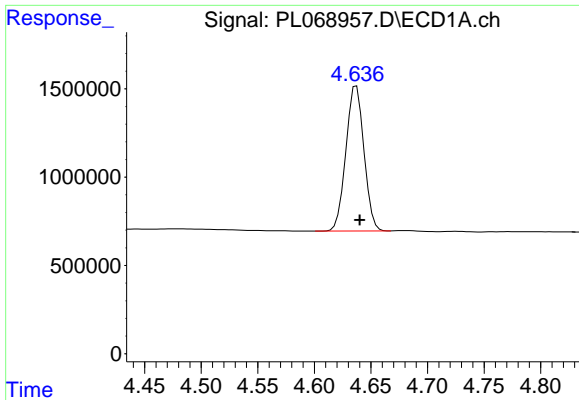
Data Path : Z:\pestpcbsrv\HPCHEM1\ECD_L\Data\PL081321\
 Data File : PL068957.D
 Signal(s) : Signal #1: ECD1A.ch Signal #2: ECD2B.ch
 Acq On : 13 Aug 2021 13:40
 Operator : AR\AJ
 Sample : M3389-06
 Misc :
 ALS Vial : 8 Sample Multiplier: 1

Instrument :
 ECD_L
 ClientSampled :

Integration File signal 1: autoint1.e
 Integration File signal 2: autoint2.e
 Quant Time: Aug 14 05:45:54 2021
 Quant Method : Z:\pestpcbsrv\HPCHEM1\ECD_L\methods\PL080521.M
 Quant Title : GC Extractables
 QLast Update : Fri Aug 06 03:02:43 2021
 Response via : Initial Calibration
 Integrator: ChemStation

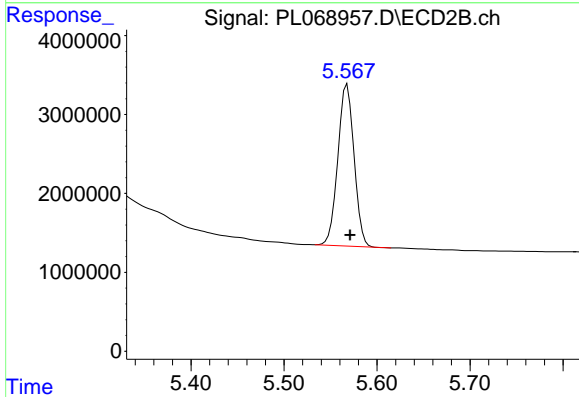
Volume Inj. : 1 µl
 Signal #1 Phase : ZB-MR2 Signal #2 Phase: ZB-MR1
 Signal #1 Info : 30M x 0.32mm x0.2 Signal #2 Info : 30M x 0.32mm x0.5µm



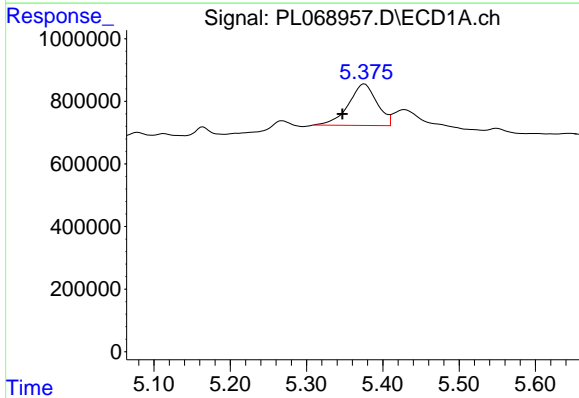


#1 Tetrachloro-m-xylene
 R.T.: 4.637 min
 Delta R.T.: -0.003 min
 Response: 9114529
 Conc: 22.03 ng/ml

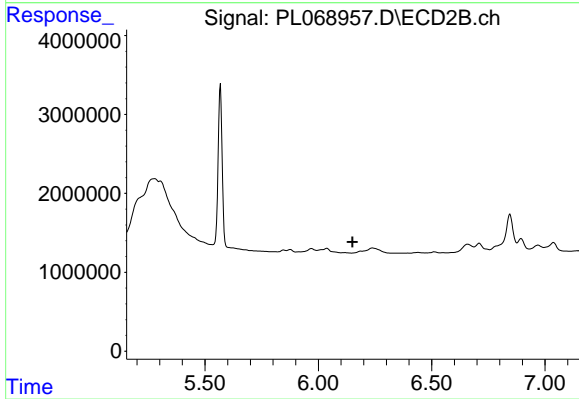
Instrument :
 ECD_L
 ClientSampled :



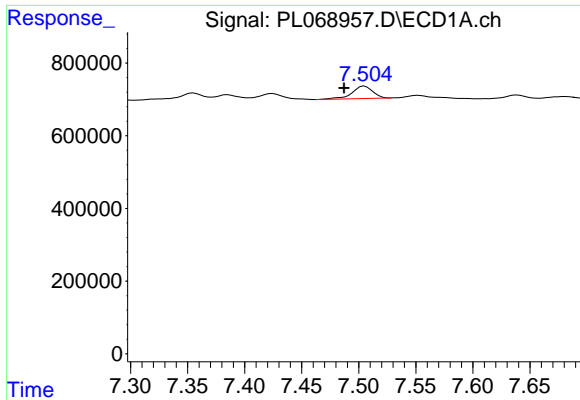
#1 Tetrachloro-m-xylene
 R.T.: 5.568 min
 Delta R.T.: -0.003 min
 Response: 24800794
 Conc: 24.43 ng/ml



#2 alpha-BHC
 R.T.: 5.376 min
 Delta R.T.: 0.029 min
 Response: 3427956
 Conc: 6.20 ng/ml

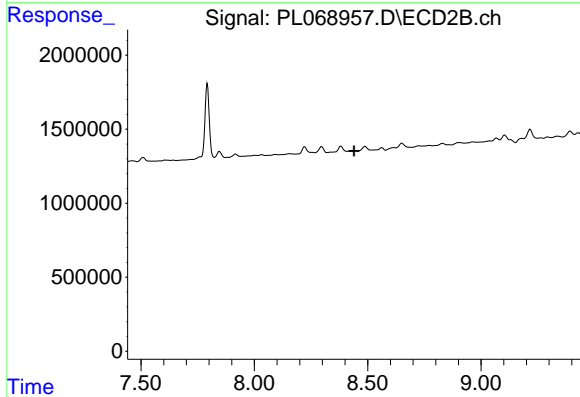


#2 alpha-BHC
 R.T.: 0.000 min
 Exp R.T. : 6.151 min
 Response: 0
 Conc: N.D.

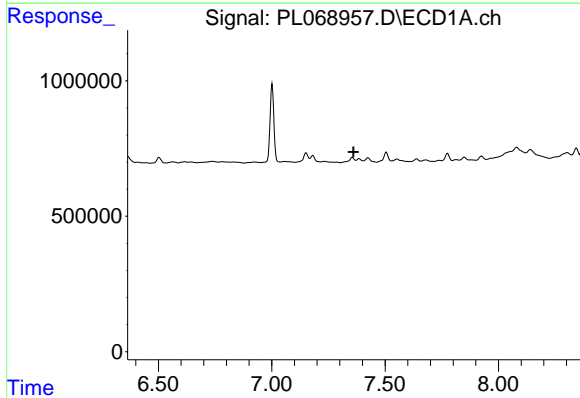


#9 Endosulfan I
 R.T.: 7.505 min
 Delta R.T.: 0.018 min
 Response: 428921
 Conc: 0.84 ng/ml

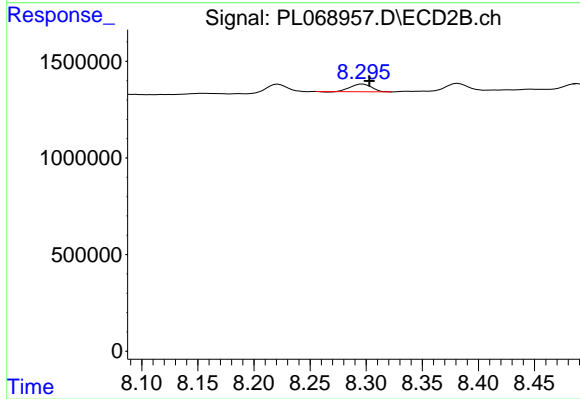
Instrument :
 ECD_L
 ClientSampled :



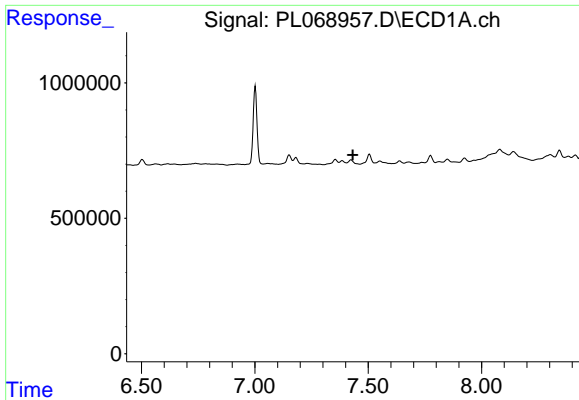
#9 Endosulfan I
 R.T.: 0.000 min
 Exp R.T. : 8.440 min
 Response: 0
 Conc: N.D.



#10 gamma-Chlordane
 R.T.: 0.000 min
 Exp R.T. : 7.361 min
 Response: 0
 Conc: N.D.

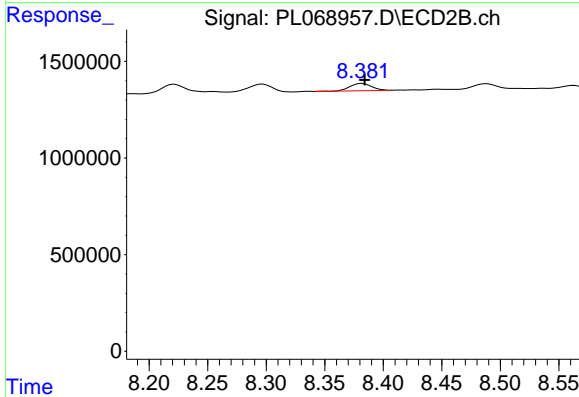


#10 gamma-Chlordane
 R.T.: 8.297 min
 Delta R.T.: -0.006 min
 Response: 510465
 Conc: 0.45 ng/ml

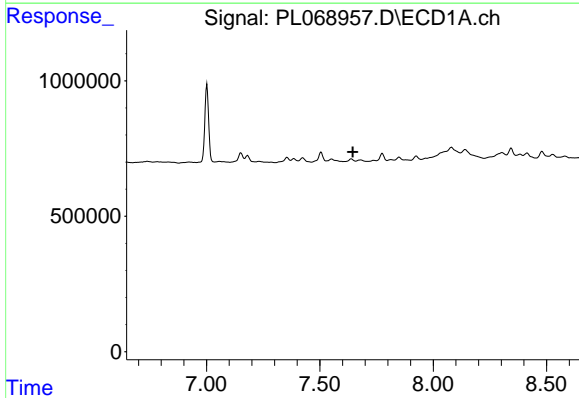


#11 alpha-Chlordane
 R.T.: 0.000 min
 Exp R.T. : 7.432 min
 Response: 0
 Conc: N.D.

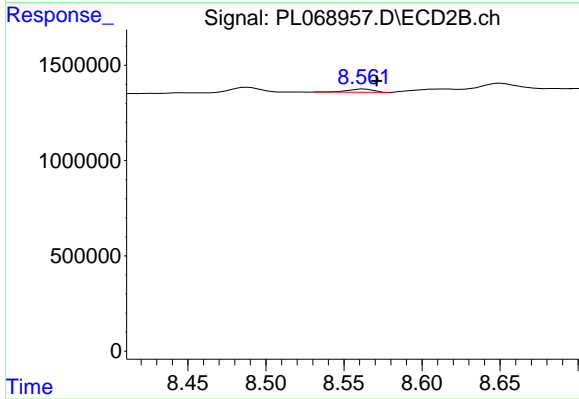
Instrument :
 ECD_L
 ClientSampled :



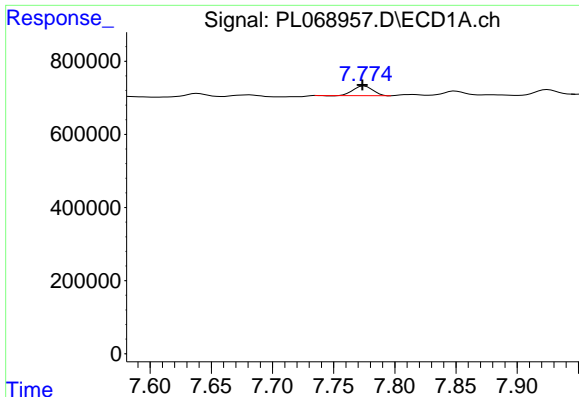
#11 alpha-Chlordane
 R.T.: 8.382 min
 Delta R.T.: -0.002 min
 Response: 497650
 Conc: 0.43 ng/ml



#12 4,4'-DDE
 R.T.: 0.000 min
 Exp R.T. : 7.645 min
 Response: 0
 Conc: N.D.



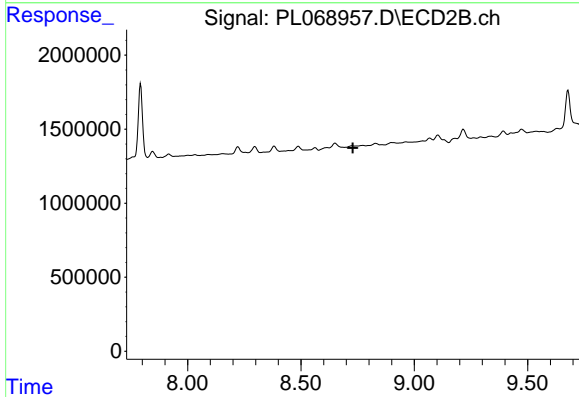
#12 4,4'-DDE
 R.T.: 8.563 min
 Delta R.T.: -0.008 min
 Response: 191892
 Conc: 0.18 ng/ml



#13 Dieldrin

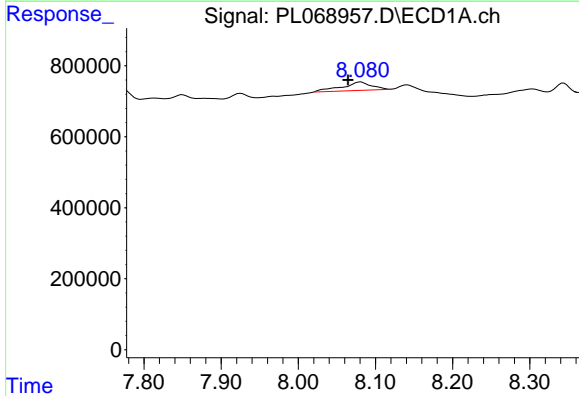
R.T.: 7.775 min
 Delta R.T.: 0.002 min
 Response: 293081
 Conc: 0.57 ng/ml

Instrument :
 ECD_L
 ClientSampleId :



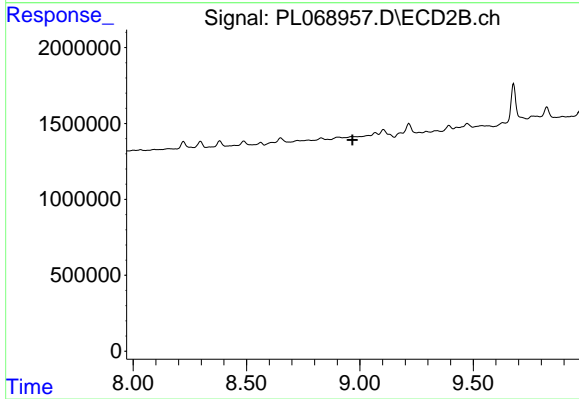
#13 Dieldrin

R.T.: 0.000 min
 Exp R.T. : 8.729 min
 Response: 0
 Conc: N.D.



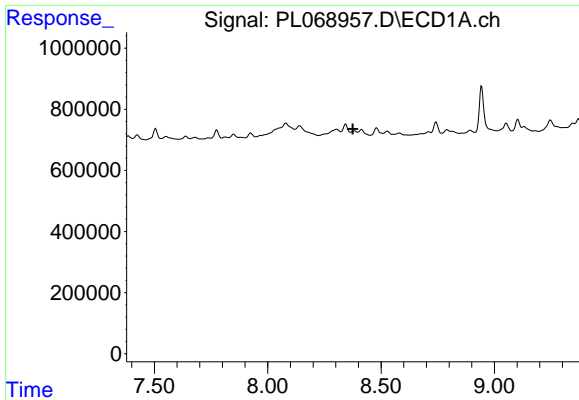
#14 Endrin

R.T.: 8.081 min
 Delta R.T.: 0.017 min
 Response: 621567
 Conc: 1.29 ng/ml



#14 Endrin

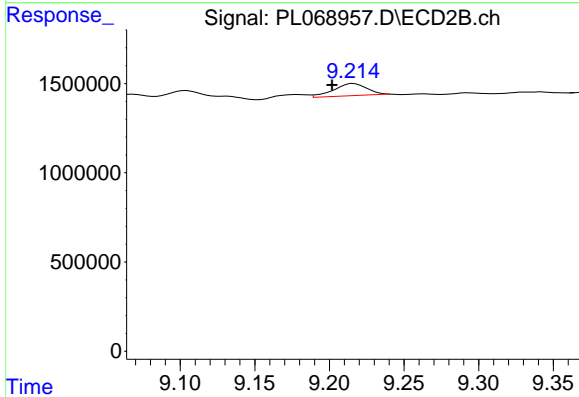
R.T.: 0.000 min
 Exp R.T. : 8.968 min
 Response: 0
 Conc: N.D.



#15 Endosulfan II

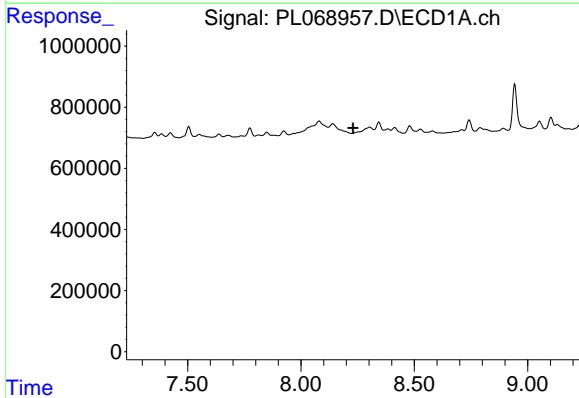
R.T.: 0.000 min
 Exp R.T. : 8.375 min
 Response: 0
 Conc: N.D.

Instrument :
 ECD_L
 ClientSampleId :



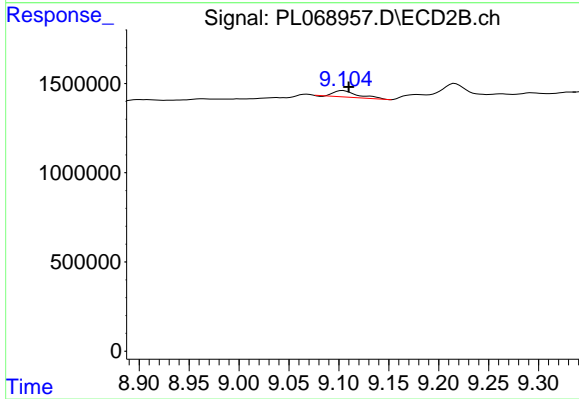
#15 Endosulfan II

R.T.: 9.216 min
 Delta R.T.: 0.014 min
 Response: 1038415
 Conc: 1.13 ng/ml



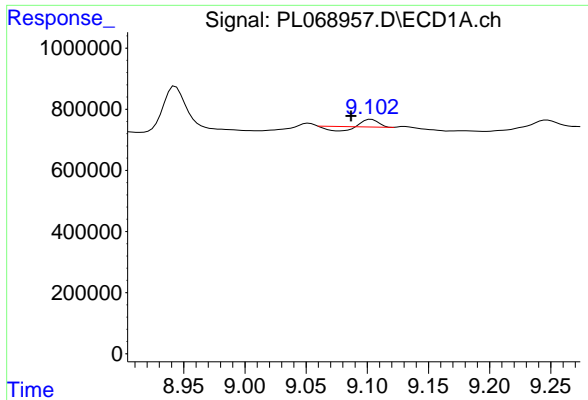
#16 4,4'-DDD

R.T.: 0.000 min
 Exp R.T. : 8.230 min
 Response: 0
 Conc: N.D.



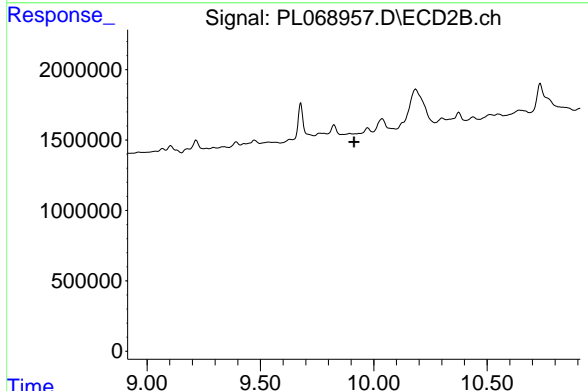
#16 4,4'-DDD

R.T.: 9.104 min
 Delta R.T.: -0.006 min
 Response: 592370
 Conc: 0.69 ng/ml

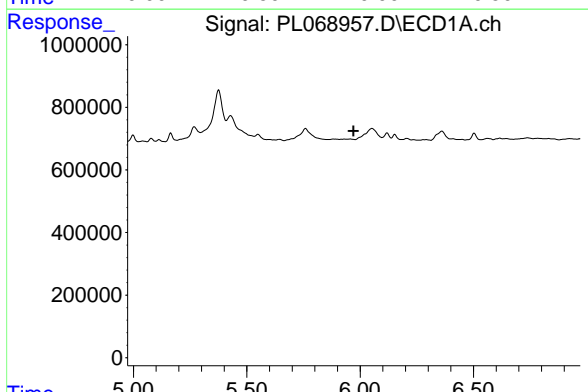


#20 Methoxychlor
 R.T.: 9.103 min
 Delta R.T.: 0.017 min
 Response: 81379
 Conc: 0.26 ng/ml

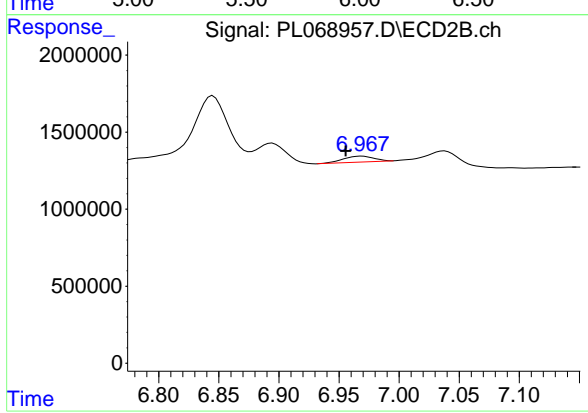
Instrument :
 ECD_L
 ClientSampleId :



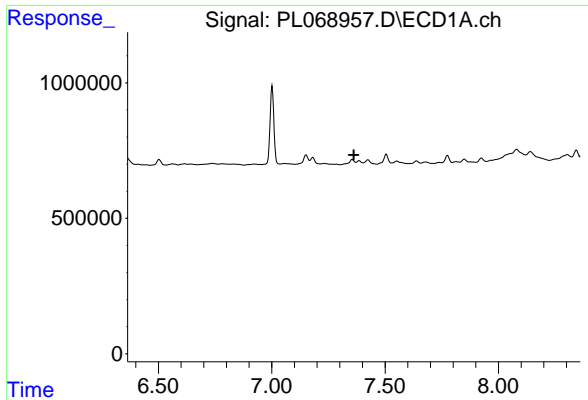
#20 Methoxychlor
 R.T.: 0.000 min
 Exp R.T. : 9.913 min
 Response: 0
 Conc: N.D.



#23 Chlordane-1
 R.T.: 0.000 min
 Exp R.T. : 5.971 min
 Response: 0
 Conc: N.D.

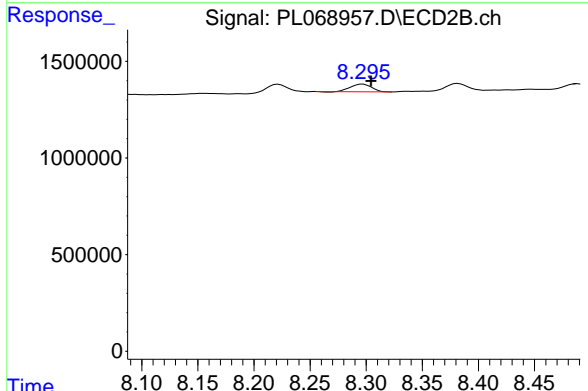


#23 Chlordane-1
 R.T.: 6.969 min
 Delta R.T.: 0.014 min
 Response: 681460
 Conc: 16.16 ng/ml

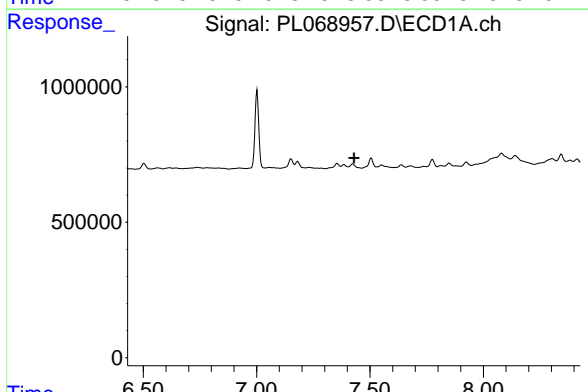


#25 Chlordane-3
 R.T.: 0.000 min
 Exp R.T. : 7.362 min
 Response: 0
 Conc: N.D.

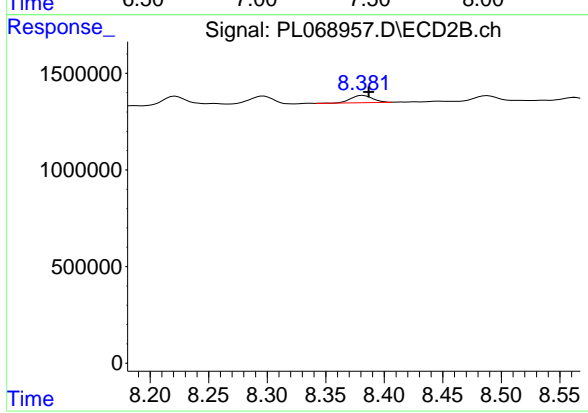
Instrument :
 ECD_L
 ClientSampled :



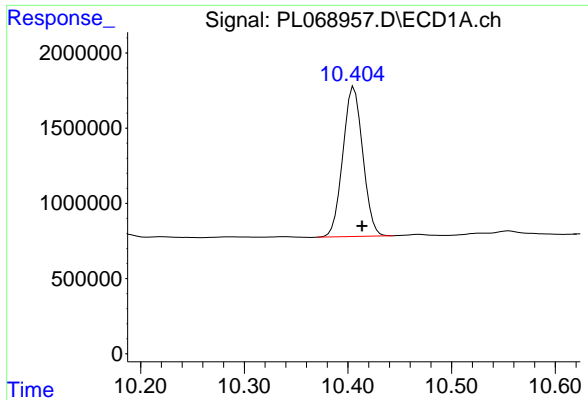
#25 Chlordane-3
 R.T.: 8.297 min
 Delta R.T.: -0.008 min
 Response: 510465
 Conc: 3.12 ng/ml



#26 Chlordane-4
 R.T.: 0.000 min
 Exp R.T. : 7.430 min
 Response: 0
 Conc: N.D.

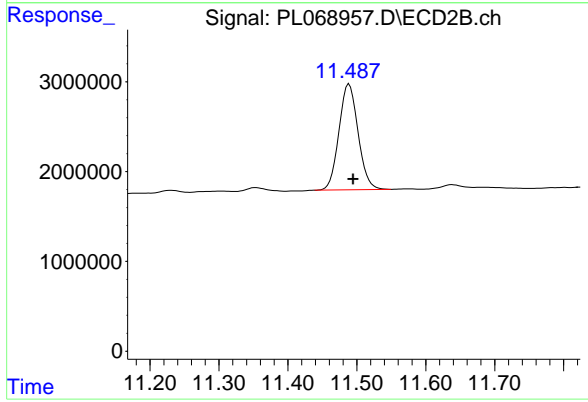


#26 Chlordane-4
 R.T.: 8.382 min
 Delta R.T.: -0.005 min
 Response: 497650
 Conc: 2.51 ng/ml



#28 Decachlorobiphenyl
R.T.: 10.406 min
Delta R.T.: -0.008 min
Response: 13259093
Conc: 23.07 ng/ml

Instrument :
ECD_L
ClientSampleId :



#28 Decachlorobiphenyl
R.T.: 11.489 min
Delta R.T.: -0.006 min
Response: 22745140
Conc: 23.44 ng/ml