

Data Path : Z:\pestpcbsrv\HPCHEM1\ECD\_L\Data\PL081321\  
 Data File : PL068960.D  
 Signal(s) : Signal #1: ECD1A.ch Signal #2: ECD2B.ch  
 Acq On : 13 Aug 2021 14:37  
 Operator : AR\AJ  
 Sample : I.BLK  
 Misc :  
 ALS Vial : 2 Sample Multiplier: 1

Instrument :  
 ECD\_L  
 ClientSampleId :  
 I.BLK

Integration File signal 1: autoint1.e  
 Integration File signal 2: autoint2.e  
 Quant Time: Aug 14 05:46:46 2021  
 Quant Method : Z:\pestpcbsrv\HPCHEM1\ECD\_L\methods\PL080521.M  
 Quant Title : GC Extractables  
 QLast Update : Fri Aug 06 03:02:43 2021  
 Response via : Initial Calibration  
 Integrator: ChemStation

Volume Inj. : 1 µl  
 Signal #1 Phase : ZB-MR2 Signal #2 Phase: ZB-MR1  
 Signal #1 Info : 30M x 0.32mm x0.2 Signal #2 Info : 30M x 0.32mm x0.5µm

Compound	RT#1	RT#2	Resp#1	Resp#2	ng/ml	ng/ml
-----						
System Monitoring Compounds						
1) SA Tetrachlo...	4.640	5.579	8995033	25647890	21.746	25.261
28) SA Decachlor...	10.408	11.504	12822559	21436314	22.312	22.094

Target Compounds

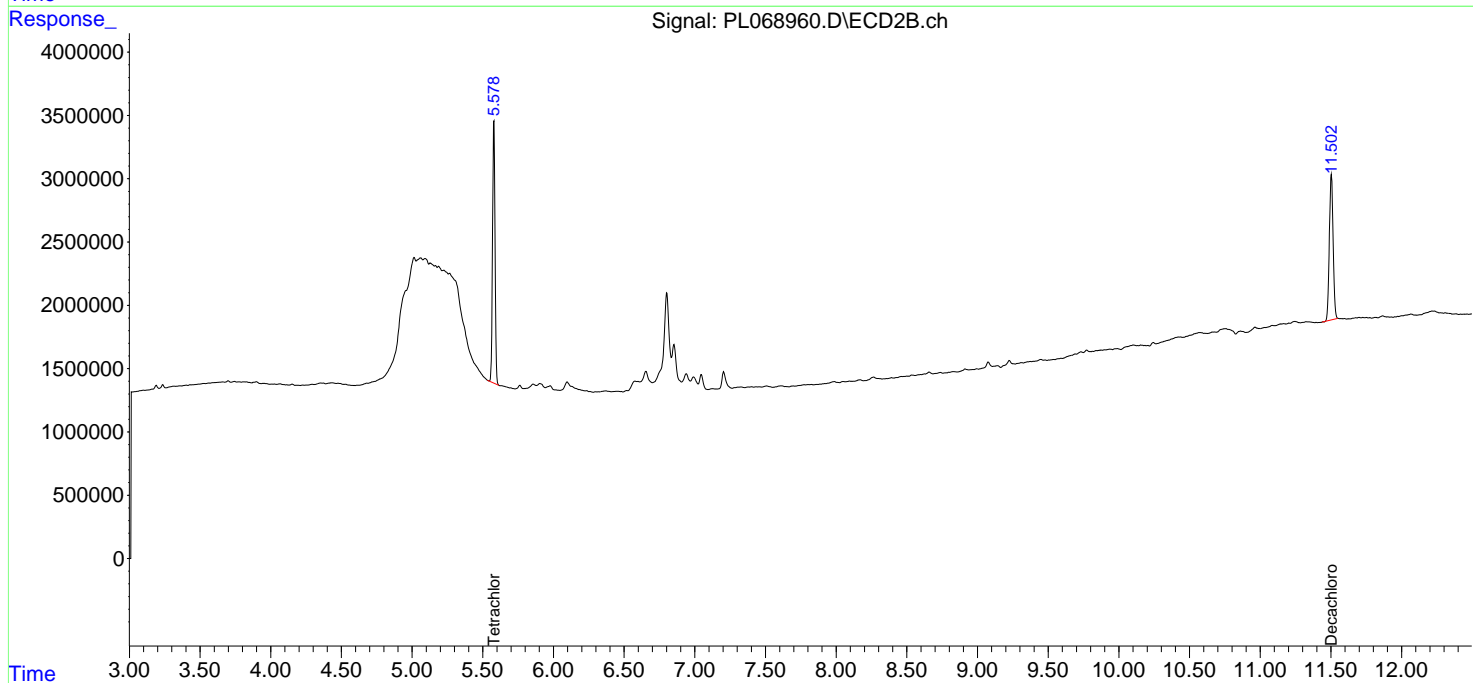
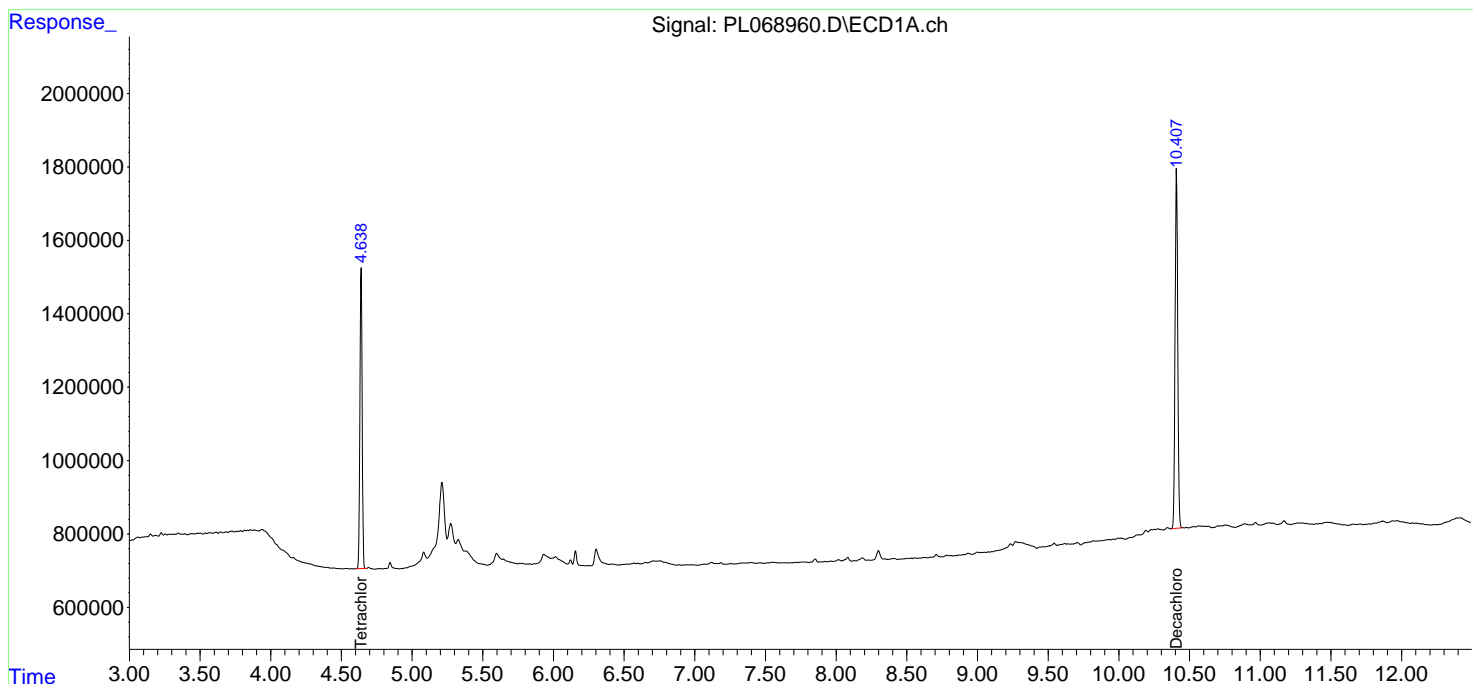
(f)=RT Delta > 1/2 Window (#)=Amounts differ by > 25% (m)=manual int.

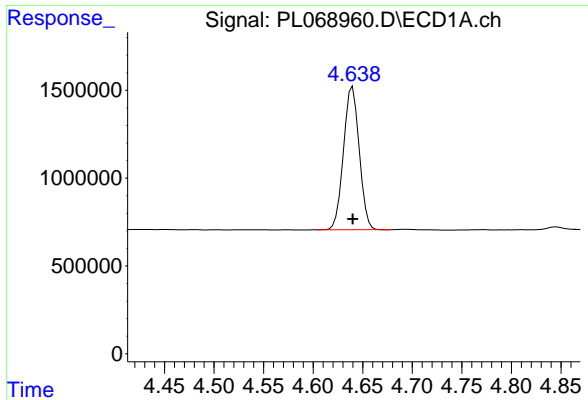
Data Path : Z:\pestpcbsrv\HPCHEM1\ECD\_L\Data\PL081321\  
 Data File : PL068960.D  
 Signal(s) : Signal #1: ECD1A.ch Signal #2: ECD2B.ch  
 Acq On : 13 Aug 2021 14:37  
 Operator : AR\AJ  
 Sample : I.BLK  
 Misc :  
 ALS Vial : 2 Sample Multiplier: 1

Instrument :  
 ECD\_L  
 ClientSampled :  
 I.BLK

Integration File signal 1: autoint1.e  
 Integration File signal 2: autoint2.e  
 Quant Time: Aug 14 05:46:46 2021  
 Quant Method : Z:\pestpcbsrv\HPCHEM1\ECD\_L\methods\PL080521.M  
 Quant Title : GC Extractables  
 QLast Update : Fri Aug 06 03:02:43 2021  
 Response via : Initial Calibration  
 Integrator: ChemStation

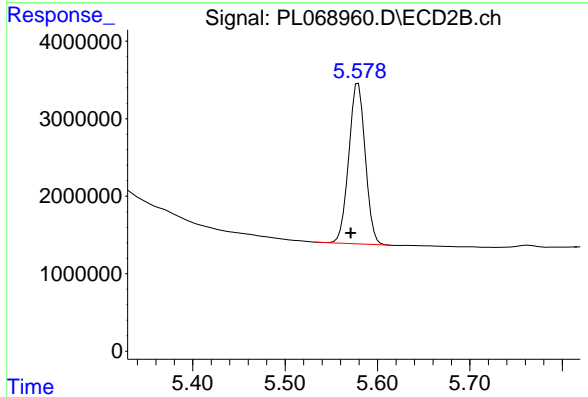
Volume Inj. : 1 µl  
 Signal #1 Phase : ZB-MR2 Signal #2 Phase: ZB-MR1  
 Signal #1 Info : 30M x 0.32mm x0.2 Signal #2 Info : 30M x 0.32mm x0.5µm



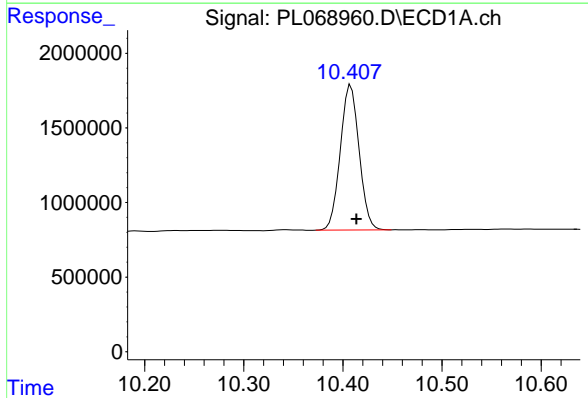


#1 Tetrachloro-m-xylene  
 R.T.: 4.640 min  
 Delta R.T.: 0.000 min  
 Response: 8995033  
 Conc: 21.75 ng/ml

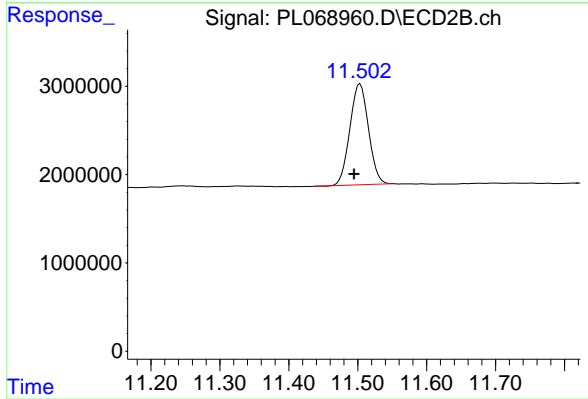
Instrument :  
 ECD\_L  
 ClientSampled :  
 I.BLK



#1 Tetrachloro-m-xylene  
 R.T.: 5.579 min  
 Delta R.T.: 0.008 min  
 Response: 25647890  
 Conc: 25.26 ng/ml



#28 Decachlorobiphenyl  
 R.T.: 10.408 min  
 Delta R.T.: -0.005 min  
 Response: 12822559  
 Conc: 22.31 ng/ml



#28 Decachlorobiphenyl  
 R.T.: 11.504 min  
 Delta R.T.: 0.009 min  
 Response: 21436314  
 Conc: 22.09 ng/ml