

Data Path : Z:\pestpcbsrv\HPCHEM1\ECD_L\Data\PL081321\
 Data File : PL068965.D
 Signal(s) : Signal #1: ECD1A.ch Signal #2: ECD2B.ch
 Acq On : 13 Aug 2021 17:00
 Operator : AR\AJ
 Sample : PB138382BS
 Misc : (Sig #1); TOX BS (Sig #2)
 ALS Vial : 14 Sample Multiplier: 1

Instrument :
 ECD_L
 ClientSampleId :
 PB138382BS

Integration File signal 1: autoint1.e
 Integration File signal 2: autoint2.e
 Quant Time: Aug 16 00:39:41 2021
 Quant Method : Z:\pestpcbsrv\HPCHEM1\ECD_L\methods\LTX080521.M
 Quant Title : GC Extractables
 QLast Update : Thu Aug 05 14:51:55 2021
 Response via : Initial Calibration
 Integrator: ChemStation

Volume Inj. : 2 µl
 Signal #1 Phase : Rtx-CLPesticide 1 Signal #2 Phase: Rtx-CLPesticide 1
 Signal #1 Info : 30M x 0.32mm x0.3 Signal #2 Info : 30M x 0.32mm x 0.25µm

Compound	RT#1	RT#2	Resp#1	Resp#2	ng/ml	ng/ml

System Monitoring Compounds						
1) SA Tetrachlo...	4.640	5.567	7415200	21313535	17.423	19.889
7) SA Decachlor...	10.409	11.491	11098381	18920020	19.191	18.837
Target Compounds						
2) Toxaphene-1	7.911	8.616	684329	1101321	183.238	168.863
3) Toxaphene-2	8.409	9.150	1755188	2353288	180.299	195.714
4) Toxaphene-3	8.677	9.375	1759970	1593900	176.726	173.136
5) Toxaphene-4	9.058	9.549	1409775	3133551	169.929	183.771
6) Toxaphene-5	9.195	9.990	2139843	2552953	176.287	178.142

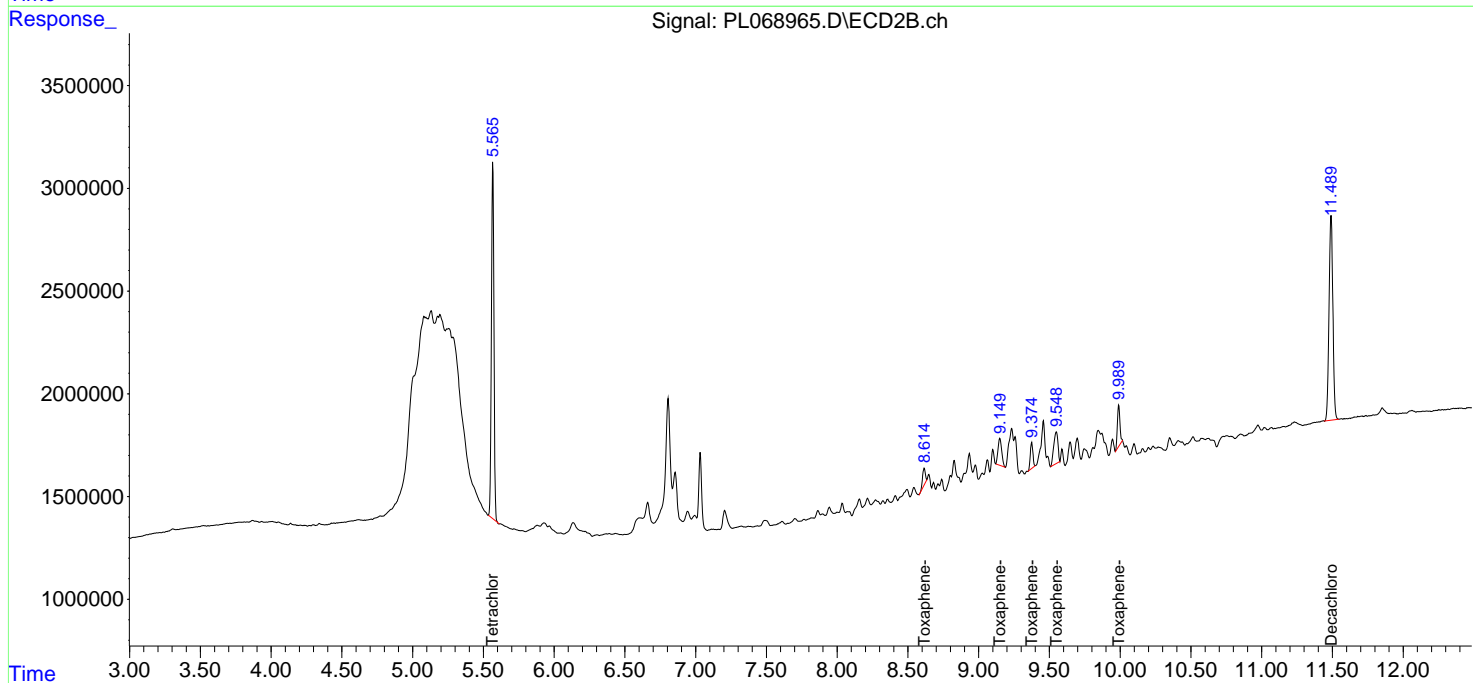
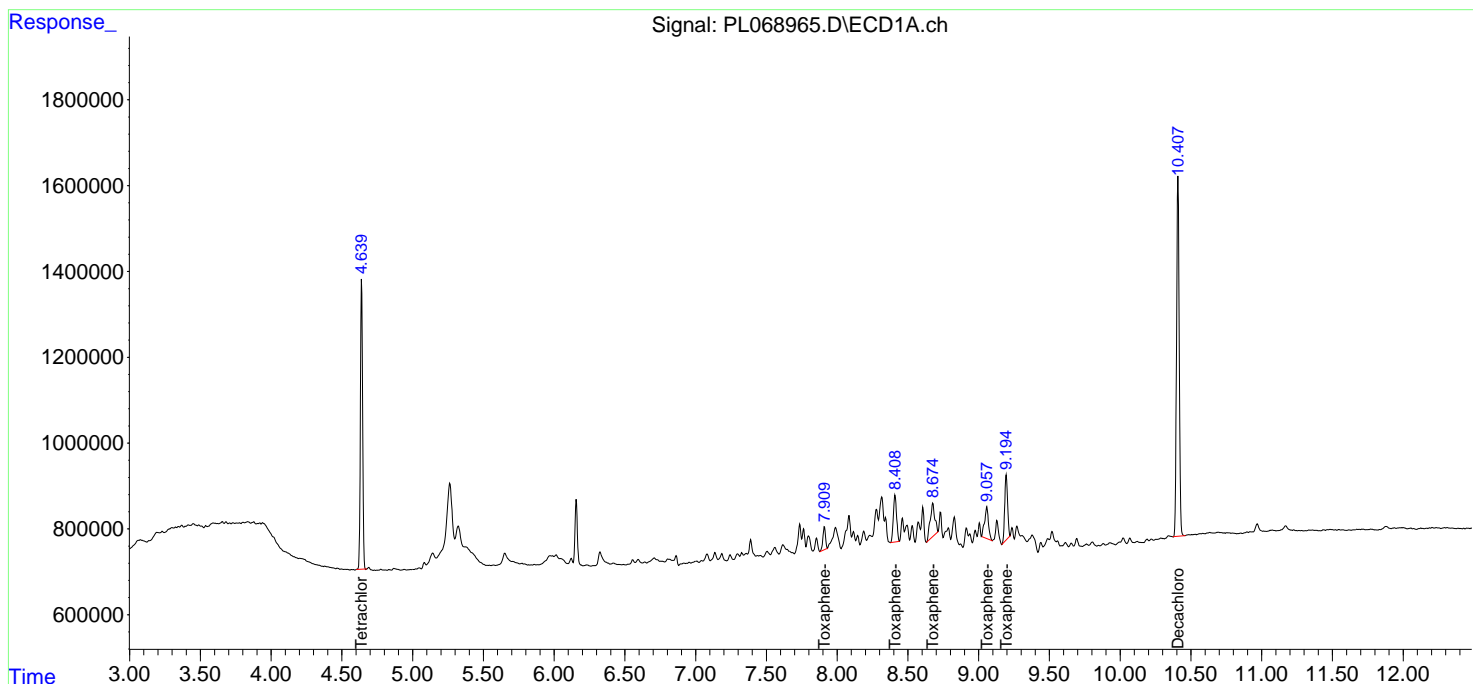
(f)=RT Delta > 1/2 Window (#)=Amounts differ by > 25% (m)=manual int.

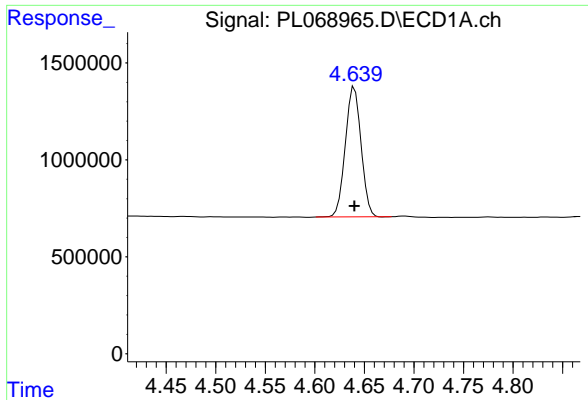
Data Path : Z:\pestpcbsrv\HPCHEM1\ECD_L\Data\PL081321\
 Data File : PL068965.D
 Signal(s) : Signal #1: ECD1A.ch Signal #2: ECD2B.ch
 Acq On : 13 Aug 2021 17:00
 Operator : AR\AJ
 Sample : PB138382BS
 Misc : (Sig #1); TOX BS (Sig #2)
 ALS Vial : 14 Sample Multiplier: 1

Instrument :
 ECD_L
 ClientSampleID :
 PB138382BS

Integration File signal 1: autoint1.e
 Integration File signal 2: autoint2.e
 Quant Time: Aug 16 00:39:41 2021
 Quant Method : Z:\pestpcbsrv\HPCHEM1\ECD_L\methods\LTX080521.M
 Quant Title : GC Extractables
 QLast Update : Thu Aug 05 14:51:55 2021
 Response via : Initial Calibration
 Integrator: ChemStation

Volume Inj. : 2 µl
 Signal #1 Phase : Rtx-CLPesticide 1 Signal #2 Phase: Rtx-CLPesticide 1
 Signal #1 Info : 30M x 0.32mm x0.3 Signal #2 Info : 30M x 0.32mm x 0.25µm

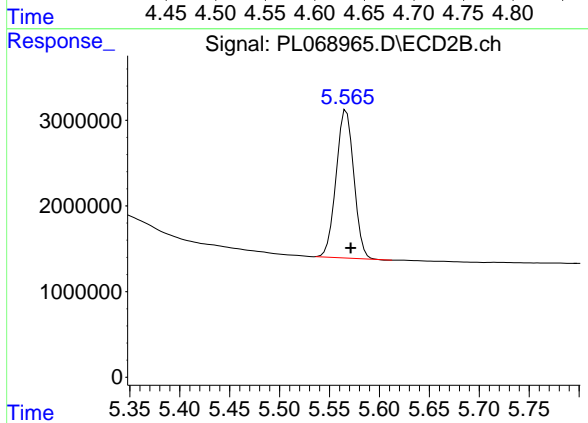




#1 Tetrachloro-m-xylene

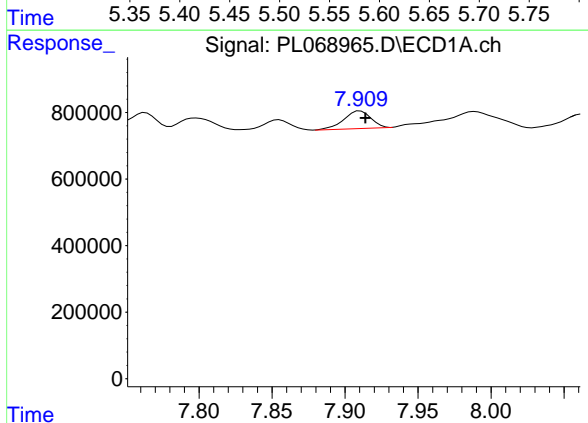
R.T.: 4.640 min
 Delta R.T.: 0.000 min
 Response: 7415200
 Conc: 17.42 ng/ml

Instrument :
 ECD_L
 ClientSampleId :
 PB138382BS



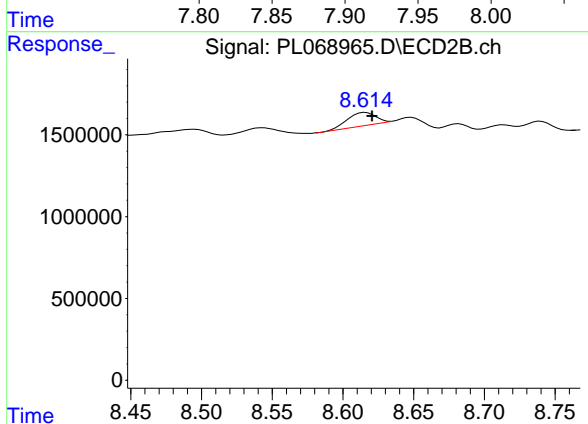
#1 Tetrachloro-m-xylene

R.T.: 5.567 min
 Delta R.T.: -0.004 min
 Response: 21313535
 Conc: 19.89 ng/ml



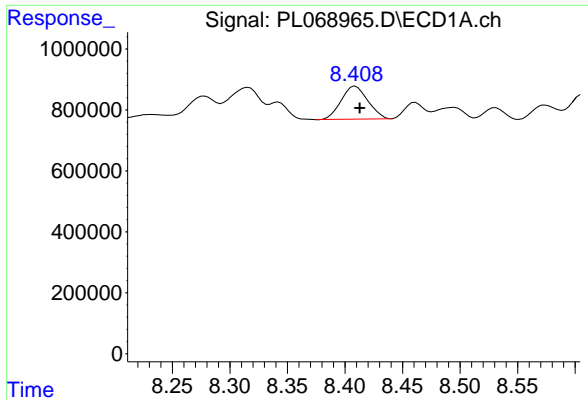
#2 Toxaphene-1

R.T.: 7.911 min
 Delta R.T.: -0.003 min
 Response: 684329
 Conc: 183.24 ng/ml



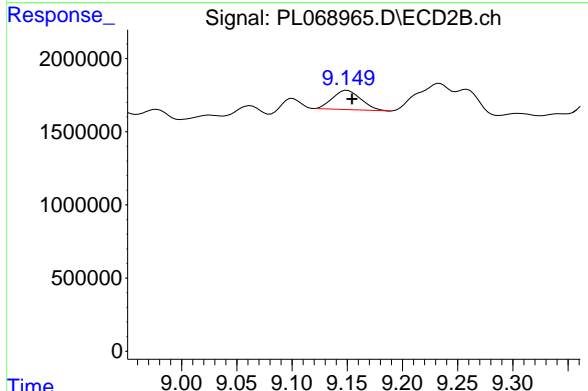
#2 Toxaphene-1

R.T.: 8.616 min
 Delta R.T.: -0.005 min
 Response: 1101321
 Conc: 168.86 ng/ml

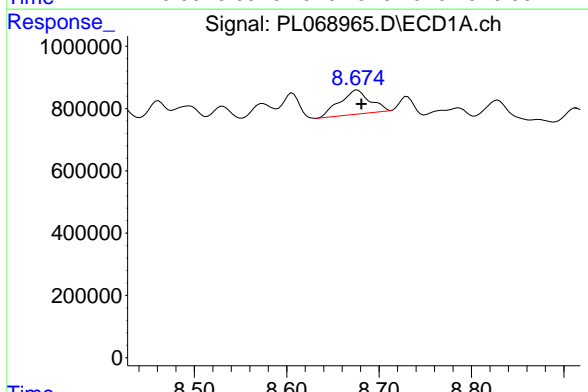


#3 Toxaphene-2
 R.T.: 8.409 min
 Delta R.T.: -0.004 min
 Response: 1755188
 Conc: 180.30 ng/ml

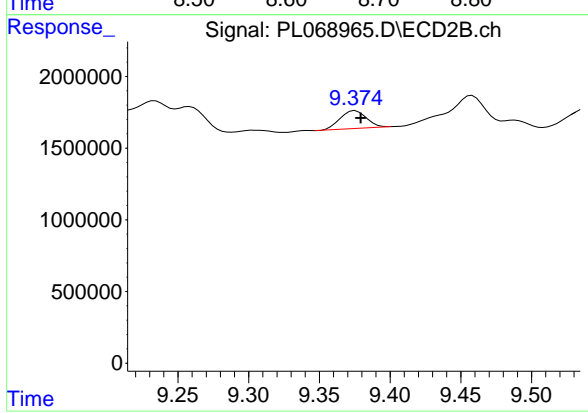
Instrument :
 ECD_L
 ClientSampled :
 PB138382BS



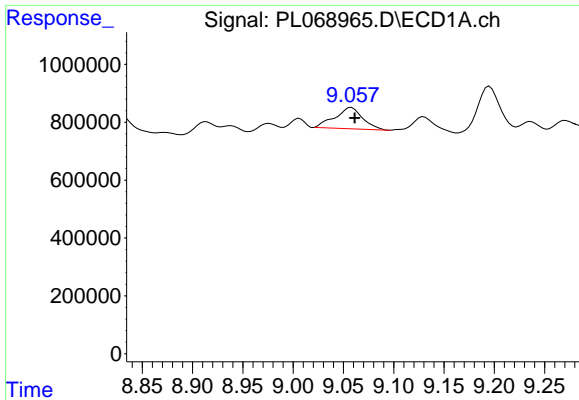
#3 Toxaphene-2
 R.T.: 9.150 min
 Delta R.T.: -0.004 min
 Response: 2353288
 Conc: 195.71 ng/ml



#4 Toxaphene-3
 R.T.: 8.677 min
 Delta R.T.: -0.004 min
 Response: 1759970
 Conc: 176.73 ng/ml

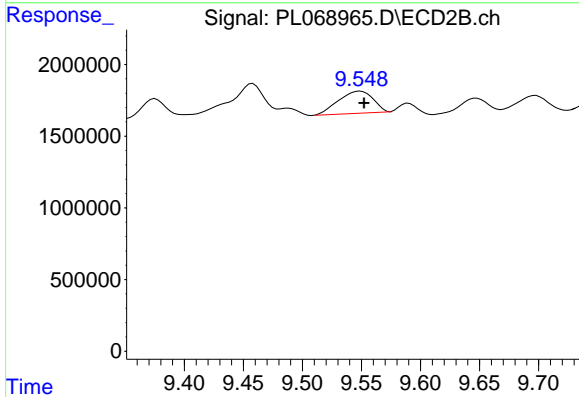


#4 Toxaphene-3
 R.T.: 9.375 min
 Delta R.T.: -0.004 min
 Response: 1593900
 Conc: 173.14 ng/ml

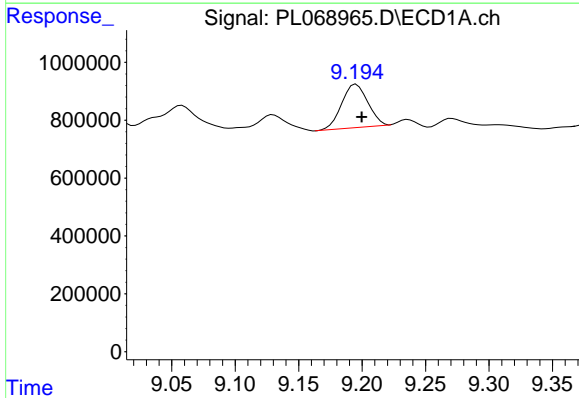


#5 Toxaphene-4
 R.T.: 9.058 min
 Delta R.T.: -0.003 min
 Response: 1409775
 Conc: 169.93 ng/ml

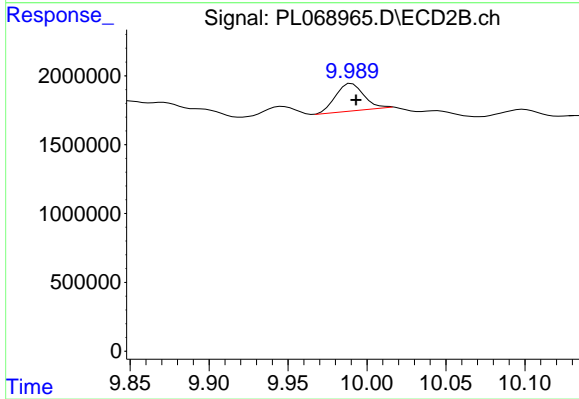
Instrument :
 ECD_L
 ClientSampleId :
 PB138382BS



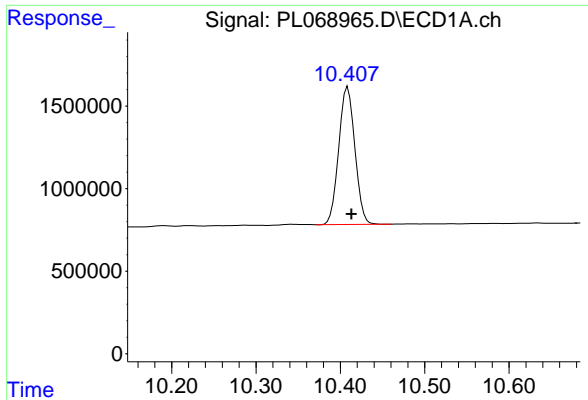
#5 Toxaphene-4
 R.T.: 9.549 min
 Delta R.T.: -0.003 min
 Response: 3133551
 Conc: 183.77 ng/ml



#6 Toxaphene-5
 R.T.: 9.195 min
 Delta R.T.: -0.004 min
 Response: 2139843
 Conc: 176.29 ng/ml



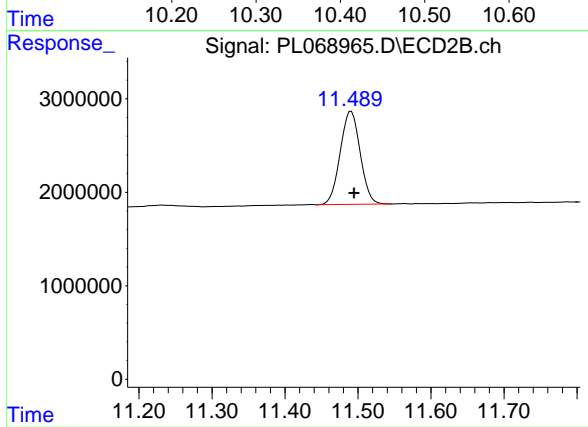
#6 Toxaphene-5
 R.T.: 9.990 min
 Delta R.T.: -0.003 min
 Response: 2552953
 Conc: 178.14 ng/ml



#7 Decachlorobiphenyl

R.T.: 10.409 min
Delta R.T.: -0.004 min
Response: 11098381
Conc: 19.19 ng/ml

Instrument :
ECD_L
ClientSampled :
PB138382BS



#7 Decachlorobiphenyl

R.T.: 11.491 min
Delta R.T.: -0.004 min
Response: 18920020
Conc: 18.84 ng/ml