

Data Path : Z:\pestpcbsrv\HPCHEM1\ECD_L\Data\PL081424\
 Data File : PL091045.D
 Signal(s) : Signal #1: ECD1A.ch Signal #2: ECD2B.ch
 Acq On : 14 Aug 2024 14:35
 Operator : AR\AJ
 Sample : P3518-07
 Misc :
 ALS Vial : 17 Sample Multiplier: 1

Instrument :
 ECD_L
 ClientSampleId :

Integration File signal 1: autoint1.e
 Integration File signal 2: autoint2.e
 Quant Time: Aug 15 03:44:55 2024
 Quant Method : Z:\pestpcbsrv\HPCHEM1\ECD_L\methods\PL081324.M
 Quant Title : GC Extractables
 QLast Update : Wed Aug 14 13:09:19 2024
 Response via : Initial Calibration
 Integrator: ChemStation

Volume Inj. : 1 µl
 Signal #1 Phase : ZB-MR2 Signal #2 Phase: ZB-MR1
 Signal #1 Info : 30M x 0.32mm x0.2 Signal #2 Info : 30M x 0.32mm x0.5µm

	Compound	RT#1	RT#2	Resp#1	Resp#2	ng/ml	ng/ml

System Monitoring Compounds							
1)	SA Tetrachlo...	3.545	2.786	18399723	15950618	8.569	8.171
28)	SA Decachlor...	9.055	7.926	10711400	12440928	7.026	6.568
Target Compounds							
2)	A alpha-BHC	0.000	3.282	0	335119	N.D.	0.121 #
3)	MA gamma-BHC...	0.000	3.632	0	357922	N.D.	0.136 #
4)	MA Heptachlor	0.000	3.958	0	1262905	N.D.	0.489 #
5)	MB Aldrin	0.000	4.240	0	2431615	N.D.	0.989 #
6)	B beta-BHC	4.554f	0.000	2248276	0	1.662	N.D. #
7)	B delta-BHC	0.000	4.153	0	812980	N.D.	0.321 #
8)	B Heptachlo...	5.684	4.744	13526601	241302	5.529	0.107 #
10)	B gamma-Chl...	5.943	4.992	9794381	2003146	4.053	0.847 #
11)	B alpha-Chl...	6.026	5.054	7177088	3565007	2.981	1.515 #
12)	B 4,4'-DDE	6.194	5.244	2844034	2327769	1.359	1.114
13)	MA Dieldrin	0.000	5.378	0	1512025	N.D.	0.664 #
14)	MA Endrin	0.000	5.669f	0	2880948	N.D.	1.414 #
16)	A 4,4'-DDD	0.000	5.799	0	513575	N.D.	0.311 #
17)	MA 4,4'-DDT	7.025	6.048	2061908	1831730	1.162	1.031
18)	B Endrin al...	0.000	6.143f	0	116613	N.D.	0.075 #
19)	B Endosulfa...	0.000	6.344	0	341215	N.D.	0.177 #
23)	Chlordane-1	0.000	3.785	0	1433167	N.D.	19.659 #
24)	Chlordane-2	0.000	4.362	0	3136708	N.D.	33.385 #
25)	Chlordane-3	5.943	4.992	9794381	2003146	28.199	8.249 #
26)	Chlordane-4	6.026	5.054	7177088	3565007	17.063	15.289
27)	Chlordane-5	0.000	5.721	0	503237	N.D.	7.268 #

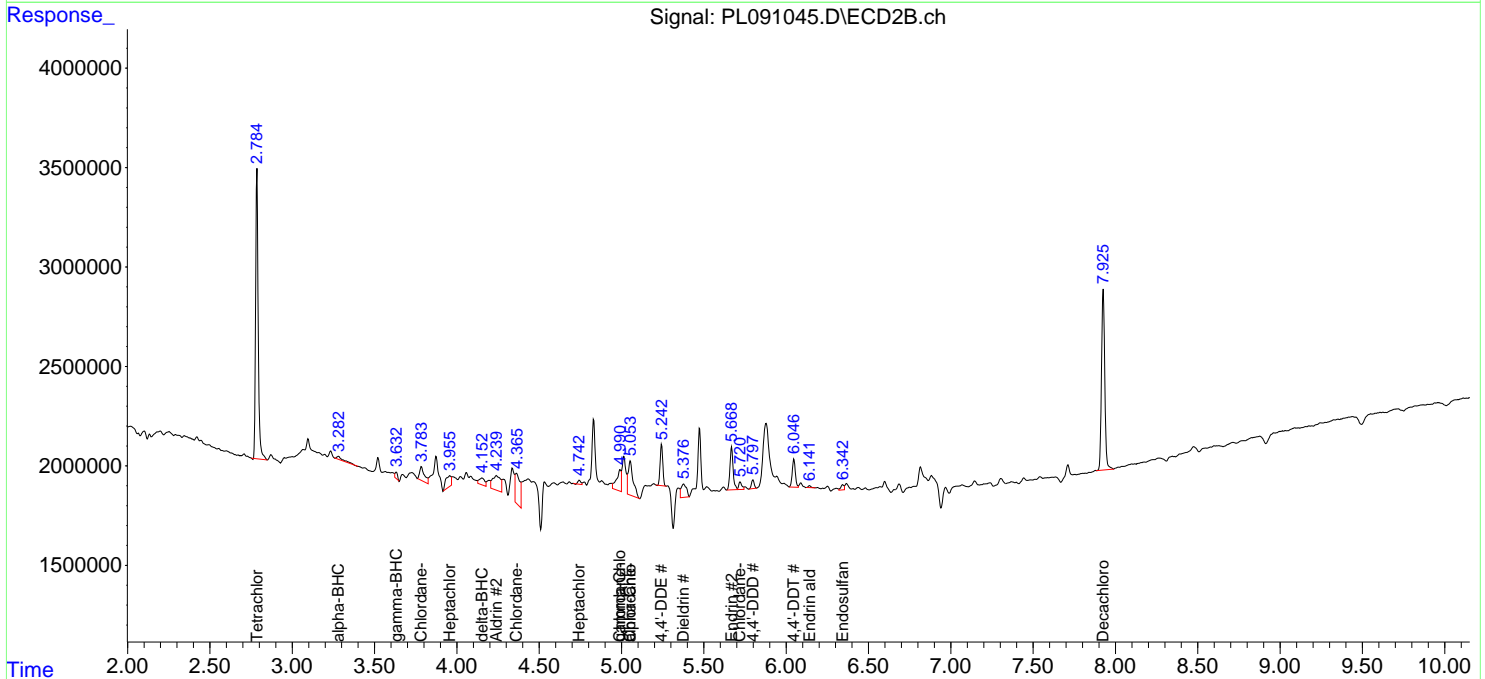
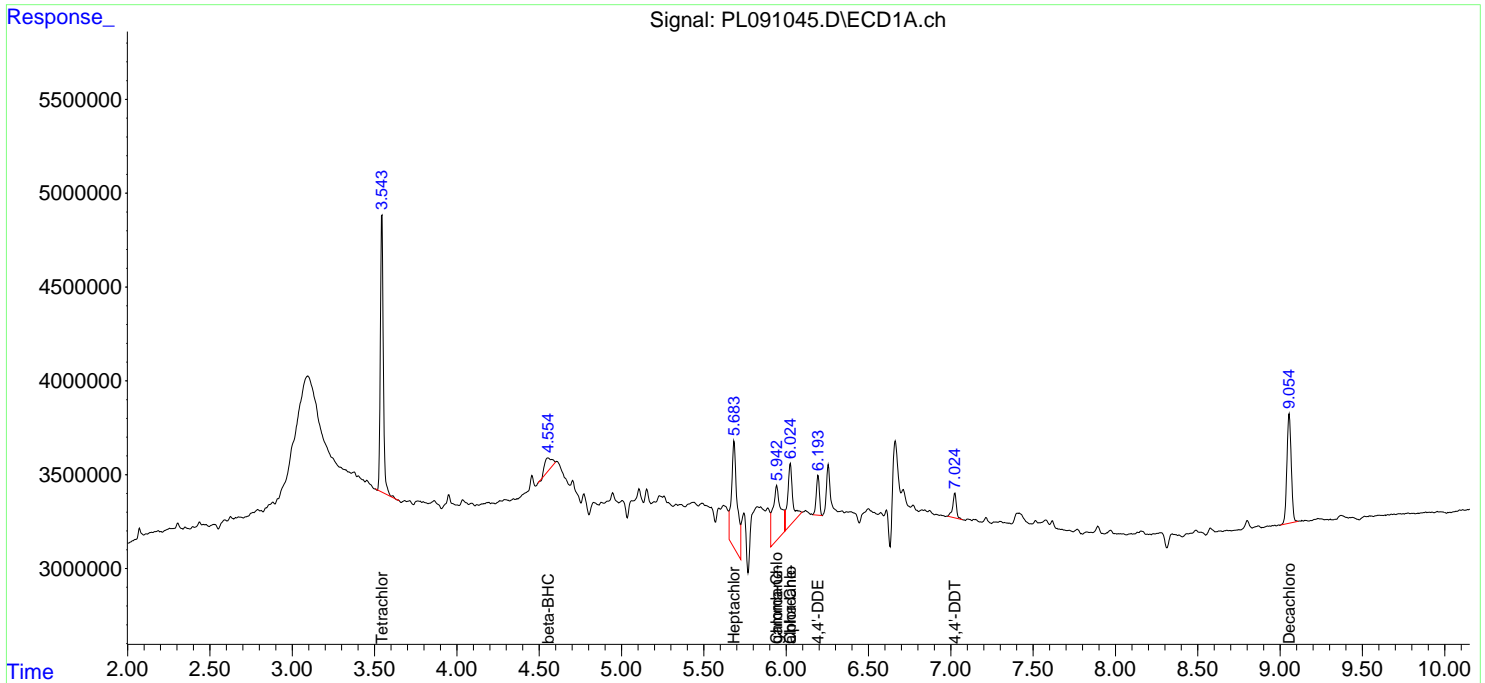
(f)=RT Delta > 1/2 Window (#)=Amounts differ by > 25% (m)=manual int.

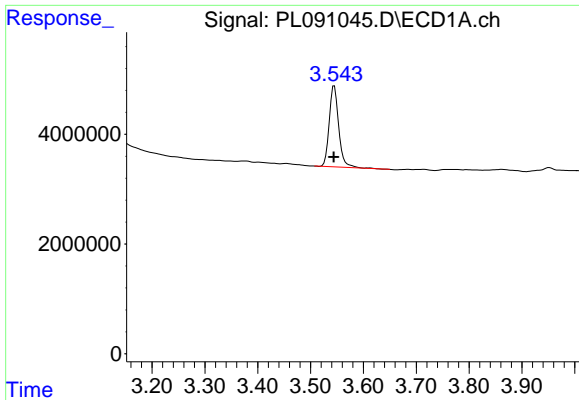
Data Path : Z:\pestpcbsrv\HPCHEM1\ECD_L\Data\PL081424\
 Data File : PL091045.D
 Signal(s) : Signal #1: ECD1A.ch Signal #2: ECD2B.ch
 Acq On : 14 Aug 2024 14:35
 Operator : AR\AJ
 Sample : P3518-07
 Misc :
 ALS Vial : 17 Sample Multiplier: 1

Instrument :
 ECD_L
 ClientSampleId :

Integration File signal 1: autoint1.e
 Integration File signal 2: autoint2.e
 Quant Time: Aug 15 03:44:55 2024
 Quant Method : Z:\pestpcbsrv\HPCHEM1\ECD_L\methods\PL081324.M
 Quant Title : GC Extractables
 QLast Update : Wed Aug 14 13:09:19 2024
 Response via : Initial Calibration
 Integrator: ChemStation

Volume Inj. : 1 µl
 Signal #1 Phase : ZB-MR2 Signal #2 Phase: ZB-MR1
 Signal #1 Info : 30M x 0.32mm x0.2 Signal #2 Info : 30M x 0.32mm x0.5µm

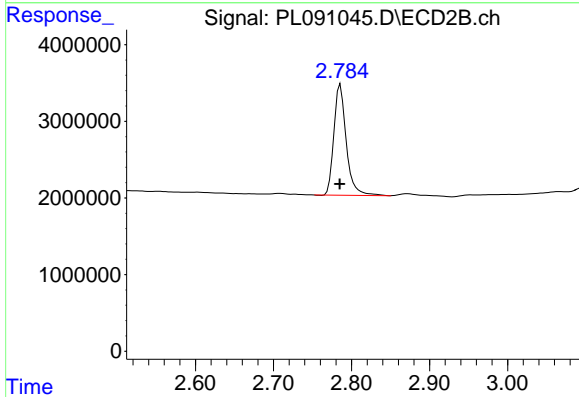




#1 Tetrachloro-m-xylene

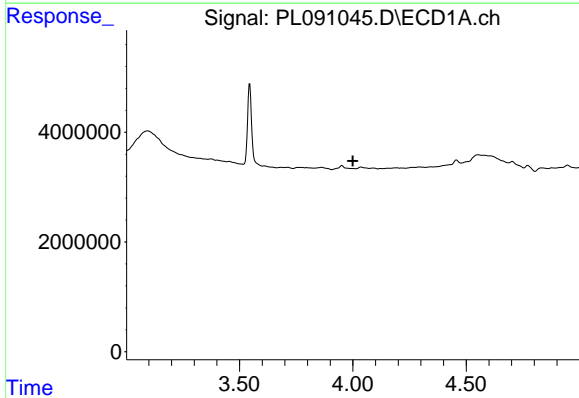
R.T.: 3.545 min
 Delta R.T.: 0.000 min
 Response: 18399723
 Conc: 8.57 ng/ml

Instrument :
 ECD_L
 ClientSampleId :



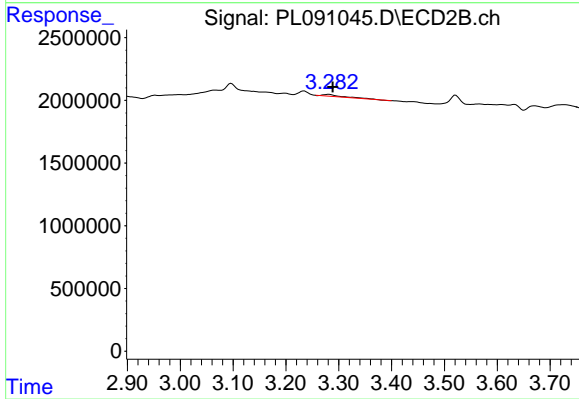
#1 Tetrachloro-m-xylene

R.T.: 2.786 min
 Delta R.T.: 0.000 min
 Response: 15950618
 Conc: 8.17 ng/ml



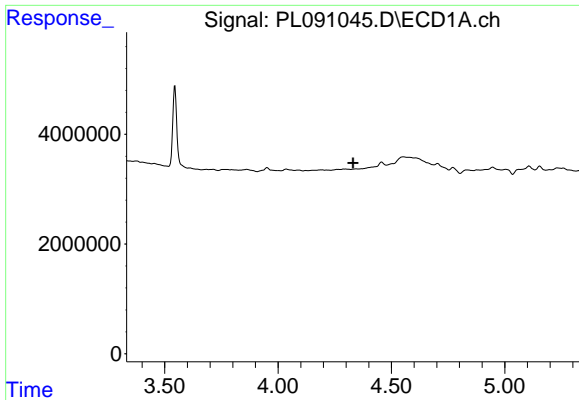
#2 alpha-BHC

R.T.: 0.000 min
 Exp R.T. : 3.999 min
 Response: 0
 Conc: N.D.



#2 alpha-BHC

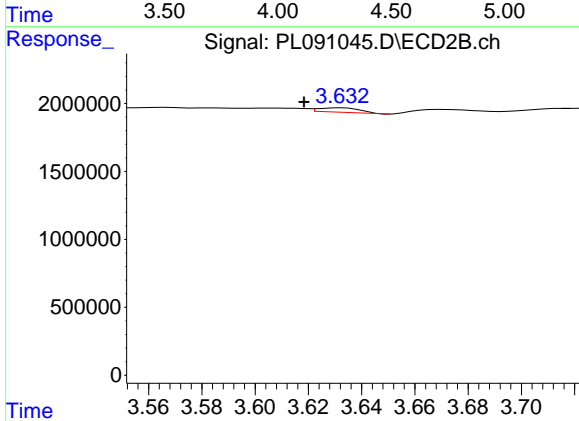
R.T.: 3.282 min
 Delta R.T.: -0.007 min
 Response: 335119
 Conc: 0.12 ng/ml



#3 gamma-BHC (Lindane)

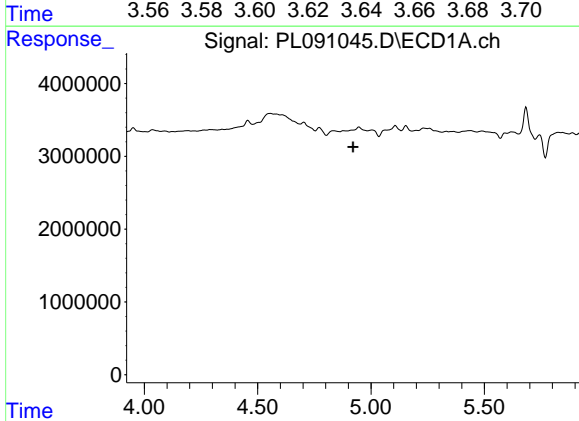
R.T.: 0.000 min
 Exp R.T.: 4.332 min
 Response: 0
 Conc: N.D.

Instrument :
 ECD_L
 ClientSampleId :



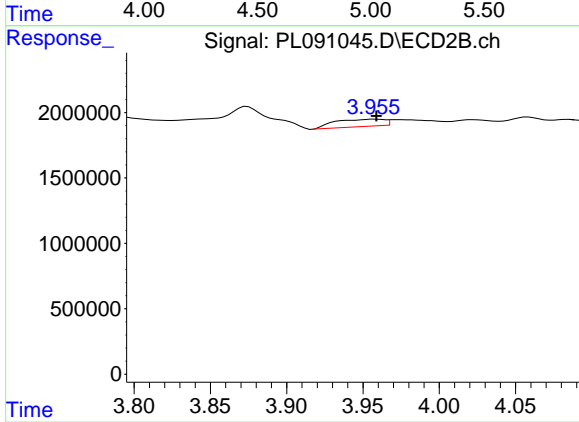
#3 gamma-BHC (Lindane)

R.T.: 3.632 min
 Delta R.T.: 0.014 min
 Response: 357922
 Conc: 0.14 ng/ml



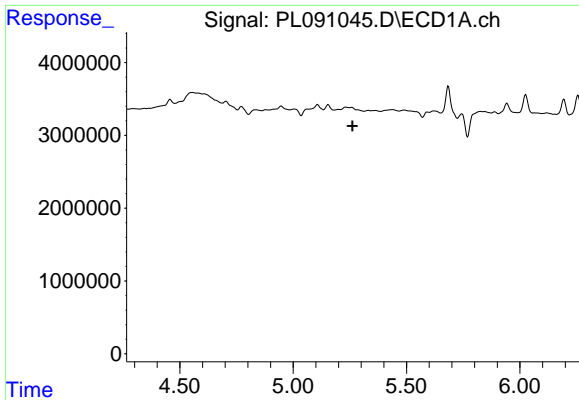
#4 Heptachlor

R.T.: 0.000 min
 Exp R.T.: 4.921 min
 Response: 0
 Conc: N.D.



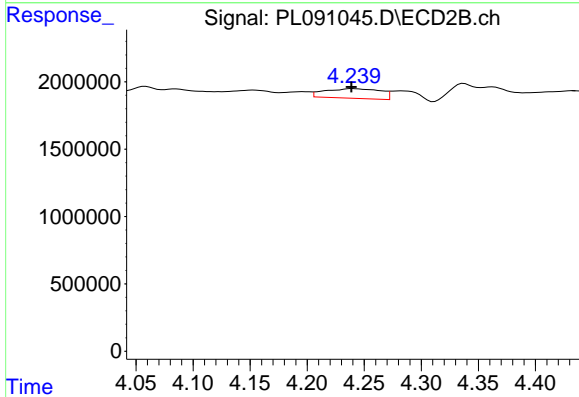
#4 Heptachlor

R.T.: 3.958 min
 Delta R.T.: 0.000 min
 Response: 1262905
 Conc: 0.49 ng/ml

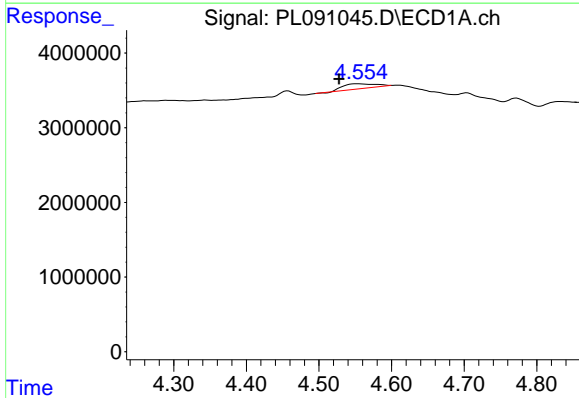


#5 Aldrin
 R.T.: 0.000 min
 Exp R.T.: 5.262 min
 Response: 0
 Conc: N.D.

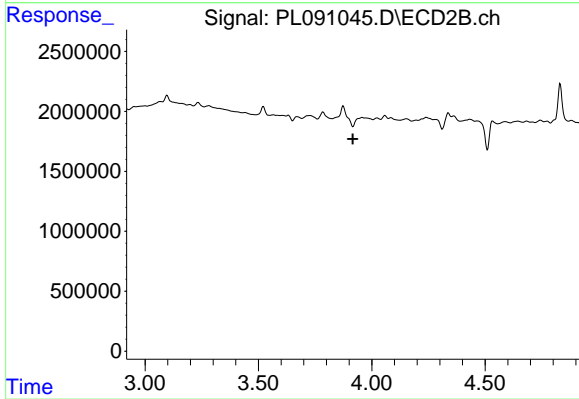
Instrument :
 ECD_L
 ClientSampleId :



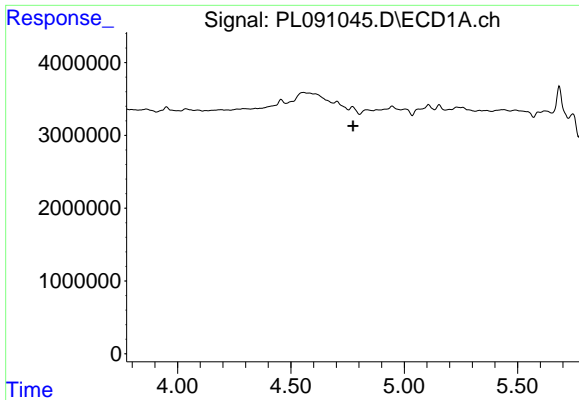
#5 Aldrin
 R.T.: 4.240 min
 Delta R.T.: 0.001 min
 Response: 2431615
 Conc: 0.99 ng/ml



#6 beta-BHC
 R.T.: 4.554 min
 Delta R.T.: 0.027 min
 Response: 2248276
 Conc: 1.66 ng/ml



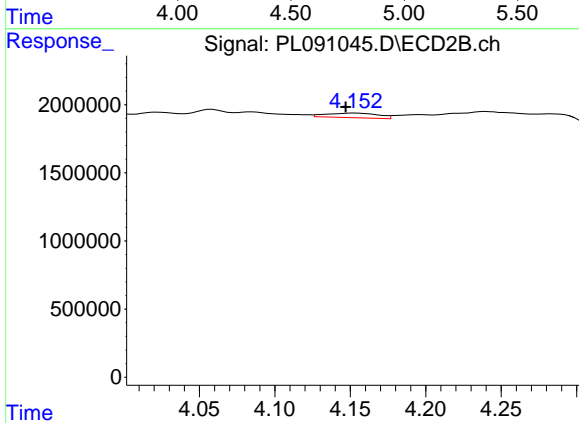
#6 beta-BHC
 R.T.: 0.000 min
 Exp R.T.: 3.917 min
 Response: 0
 Conc: N.D.



#7 delta-BHC

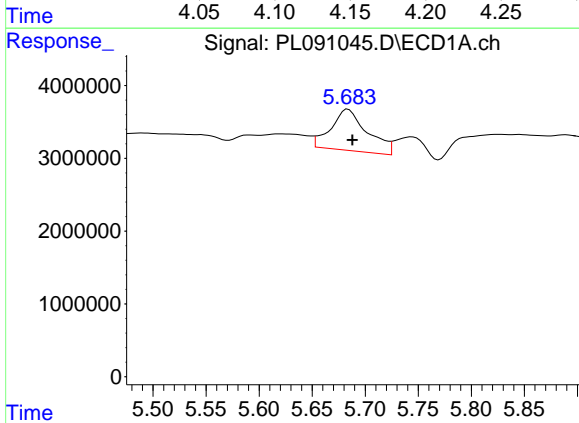
R.T.: 0.000 min
 Exp R.T.: 4.775 min
 Response: 0
 Conc: N.D.

Instrument :
 ECD_L
 ClientSampleId :



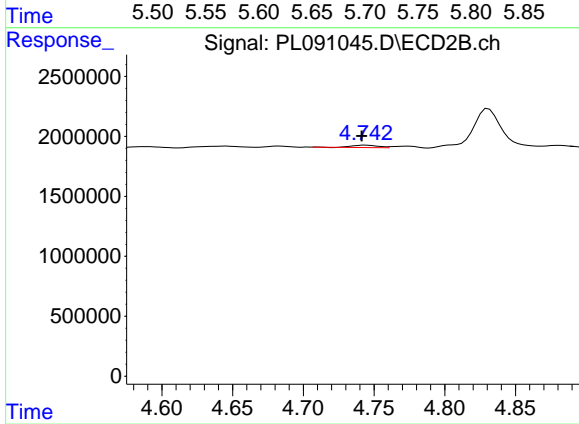
#7 delta-BHC

R.T.: 4.153 min
 Delta R.T.: 0.006 min
 Response: 812980
 Conc: 0.32 ng/ml



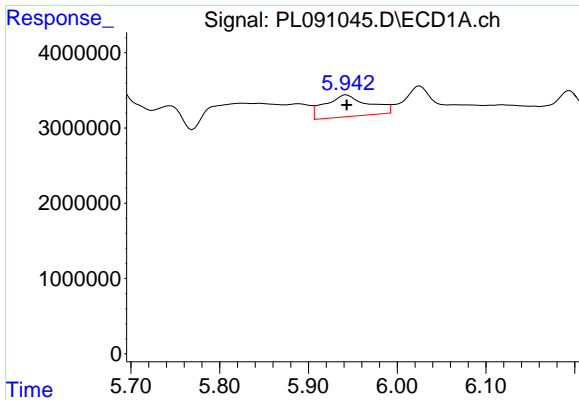
#8 Heptachlor epoxide

R.T.: 5.684 min
 Delta R.T.: -0.004 min
 Response: 13526601
 Conc: 5.53 ng/ml



#8 Heptachlor epoxide

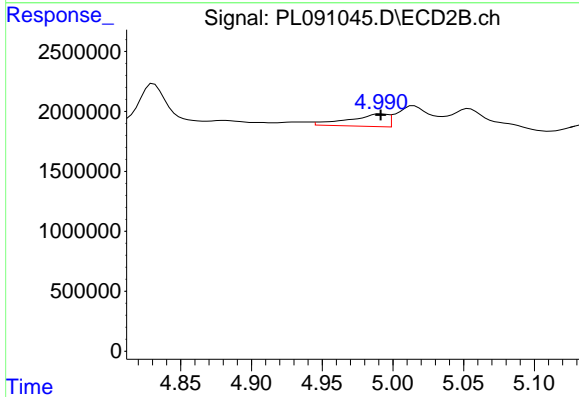
R.T.: 4.744 min
 Delta R.T.: 0.002 min
 Response: 241302
 Conc: 0.11 ng/ml



#10 gamma-Chlordane

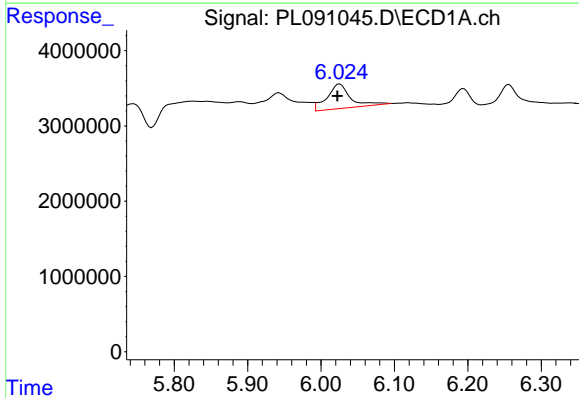
R.T.: 5.943 min
 Delta R.T.: 0.000 min
 Response: 9794381
 Conc: 4.05 ng/ml

Instrument :
 ECD_L
 ClientSampleId :



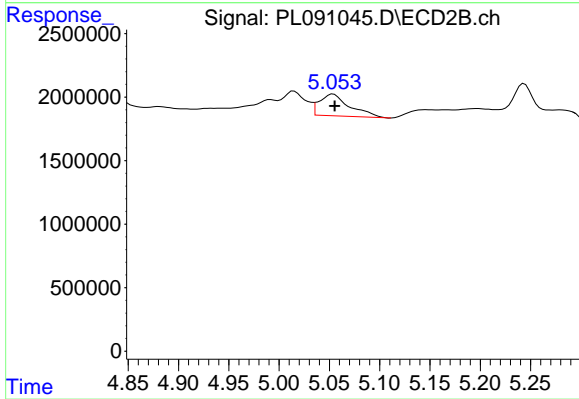
#10 gamma-Chlordane

R.T.: 4.992 min
 Delta R.T.: 0.000 min
 Response: 2003146
 Conc: 0.85 ng/ml



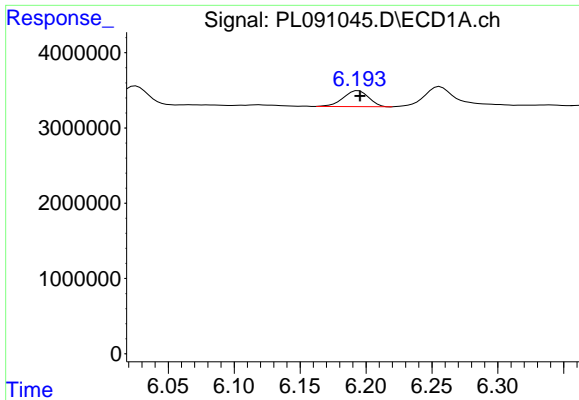
#11 alpha-Chlordane

R.T.: 6.026 min
 Delta R.T.: 0.003 min
 Response: 7177088
 Conc: 2.98 ng/ml



#11 alpha-Chlordane

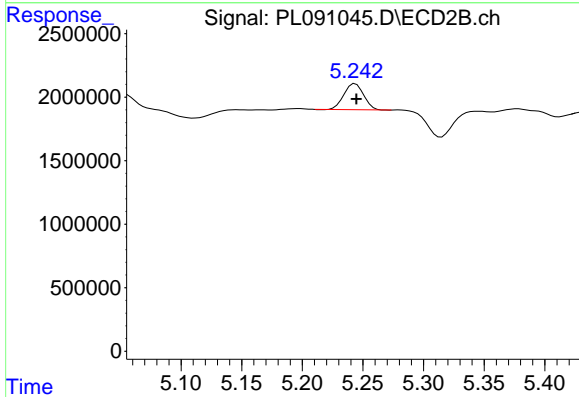
R.T.: 5.054 min
 Delta R.T.: -0.001 min
 Response: 3565007
 Conc: 1.52 ng/ml



#12 4,4'-DDE

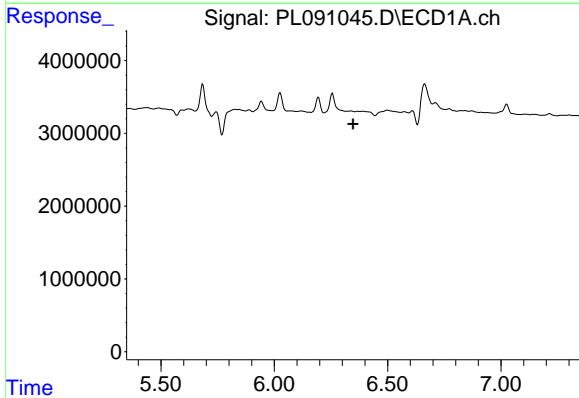
R.T.: 6.194 min
 Delta R.T.: -0.001 min
 Response: 2844034
 Conc: 1.36 ng/ml

Instrument :
 ECD_L
 ClientSampleId :



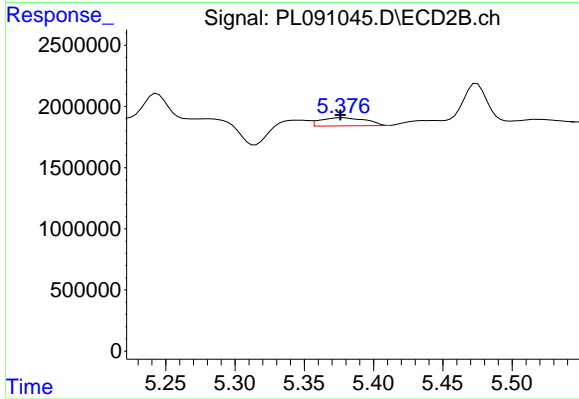
#12 4,4'-DDE

R.T.: 5.244 min
 Delta R.T.: 0.000 min
 Response: 2327769
 Conc: 1.11 ng/ml



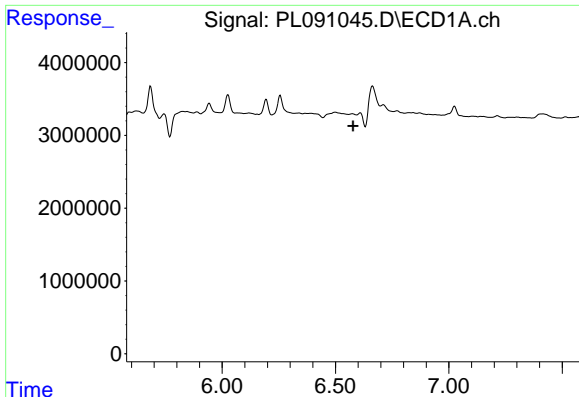
#13 Dieldrin

R.T.: 0.000 min
 Exp R.T. : 6.348 min
 Response: 0
 Conc: N.D.



#13 Dieldrin

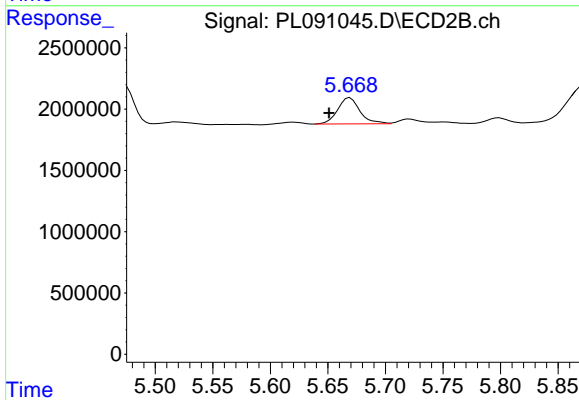
R.T.: 5.378 min
 Delta R.T.: 0.002 min
 Response: 1512025
 Conc: 0.66 ng/ml



#14 Endrin

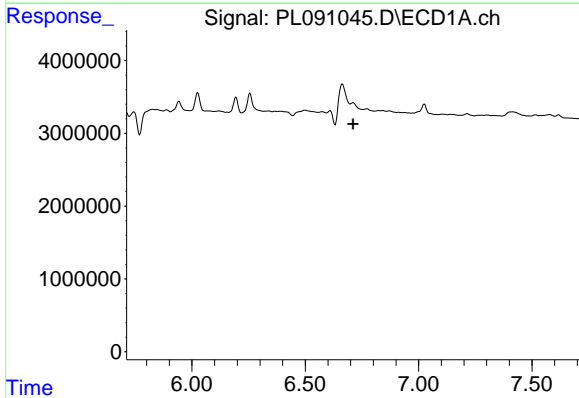
R.T.: 0.000 min
 Exp R.T.: 6.577 min
 Response: 0
 Conc: N.D.

Instrument :
 ECD_L
 ClientSampleId :



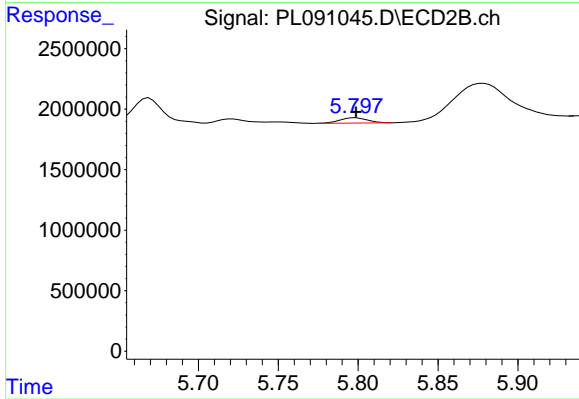
#14 Endrin

R.T.: 5.669 min
 Delta R.T.: 0.018 min
 Response: 2880948
 Conc: 1.41 ng/ml



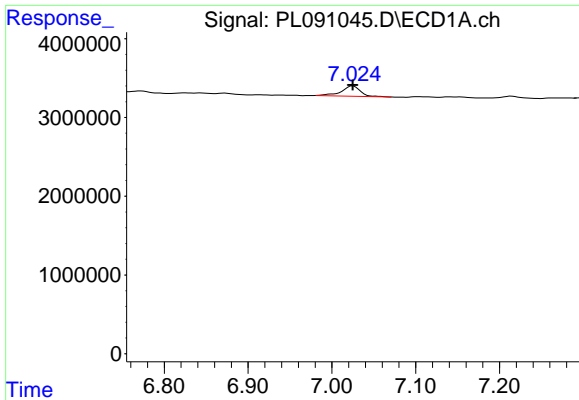
#16 4,4'-DDD

R.T.: 0.000 min
 Exp R.T.: 6.711 min
 Response: 0
 Conc: N.D.



#16 4,4'-DDD

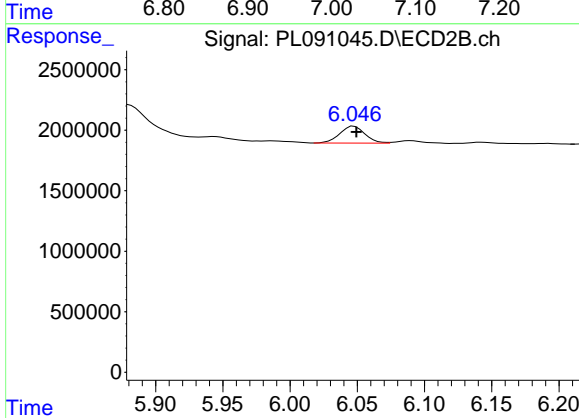
R.T.: 5.799 min
 Delta R.T.: 0.000 min
 Response: 513575
 Conc: 0.31 ng/ml



#17 4,4'-DDT

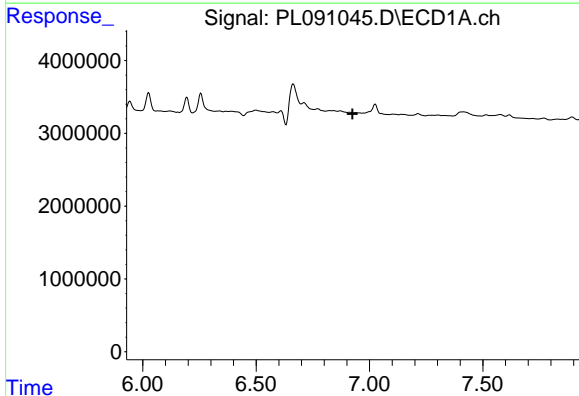
R.T.: 7.025 min
 Delta R.T.: 0.000 min
 Response: 2061908
 Conc: 1.16 ng/ml

Instrument :
 ECD_L
 ClientSampleId :



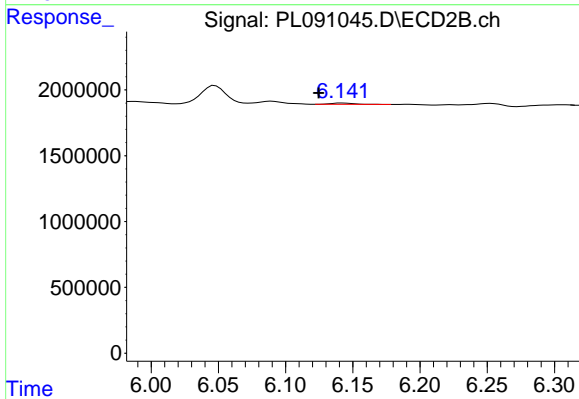
#17 4,4'-DDT

R.T.: 6.048 min
 Delta R.T.: -0.002 min
 Response: 1831730
 Conc: 1.03 ng/ml



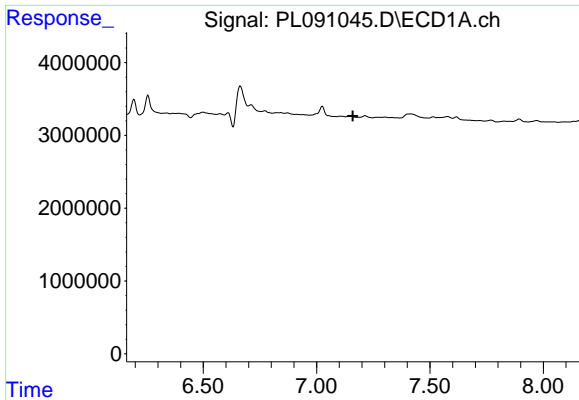
#18 Endrin aldehyde

R.T.: 0.000 min
 Exp R.T. : 6.925 min
 Response: 0
 Conc: N.D.



#18 Endrin aldehyde

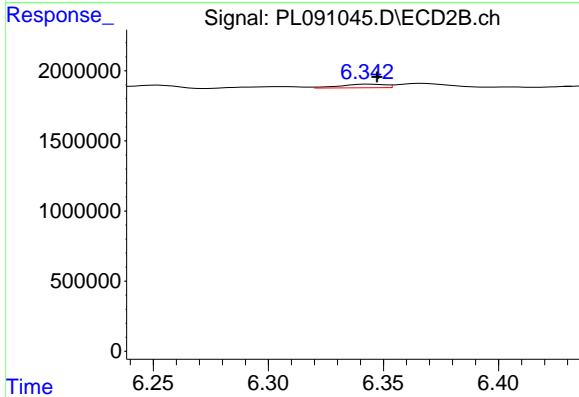
R.T.: 6.143 min
 Delta R.T.: 0.018 min
 Response: 116613
 Conc: 0.07 ng/ml



#19 Endosulfan Sulfate

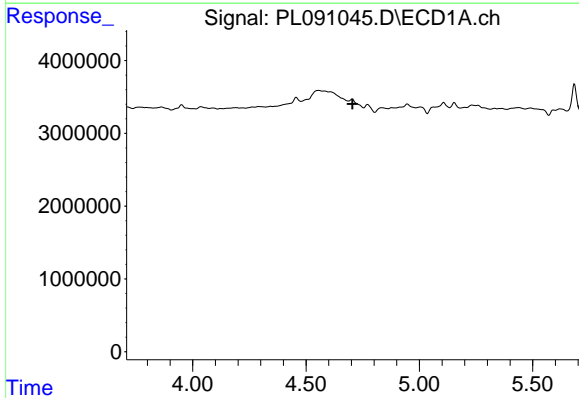
R.T.: 0.000 min
 Exp R.T. : 7.160 min
 Response: 0
 Conc: N.D.

Instrument :
 ECD_L
 ClientSampleId :



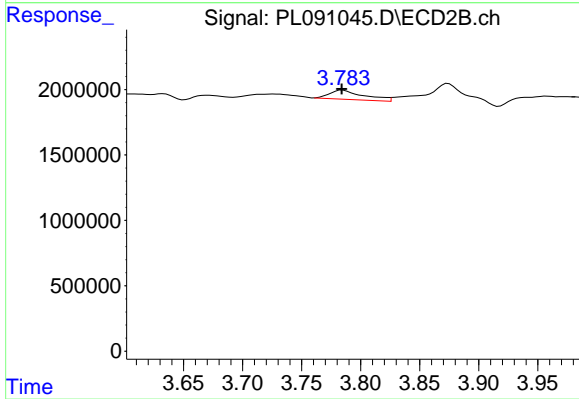
#19 Endosulfan Sulfate

R.T.: 6.344 min
 Delta R.T.: -0.003 min
 Response: 341215
 Conc: 0.18 ng/ml



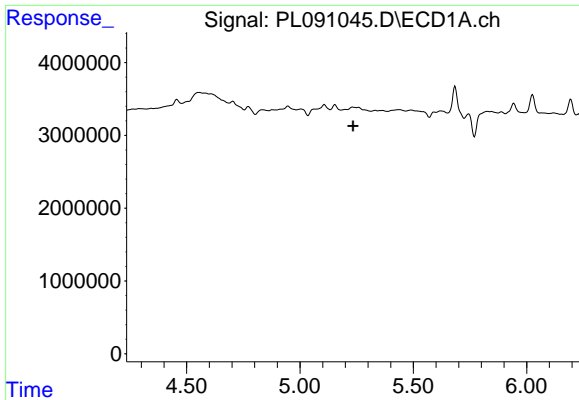
#23 Chlordane-1

R.T.: 0.000 min
 Exp R.T. : 4.706 min
 Response: 0
 Conc: N.D.



#23 Chlordane-1

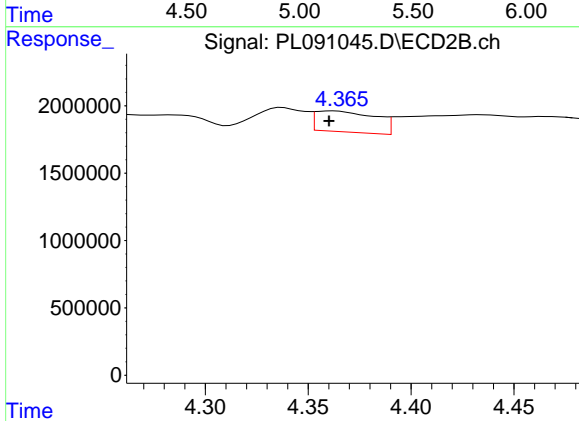
R.T.: 3.785 min
 Delta R.T.: 0.000 min
 Response: 1433167
 Conc: 19.66 ng/ml



#24 Chlordane-2

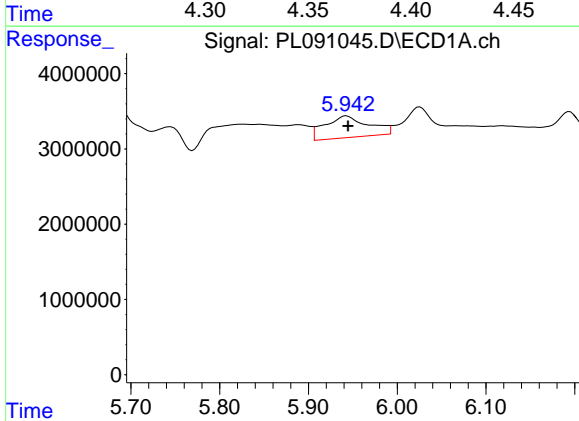
R.T.: 0.000 min
 Exp R.T.: 5.234 min
 Response: 0
 Conc: N.D.

Instrument :
 ECD_L
 ClientSampleId :



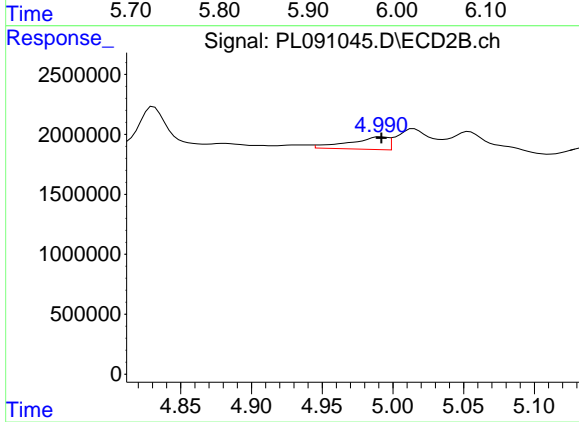
#24 Chlordane-2

R.T.: 4.362 min
 Delta R.T.: 0.002 min
 Response: 3136708
 Conc: 33.39 ng/ml



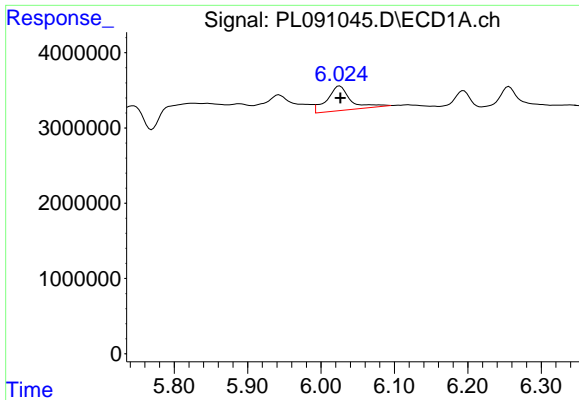
#25 Chlordane-3

R.T.: 5.943 min
 Delta R.T.: -0.002 min
 Response: 9794381
 Conc: 28.20 ng/ml



#25 Chlordane-3

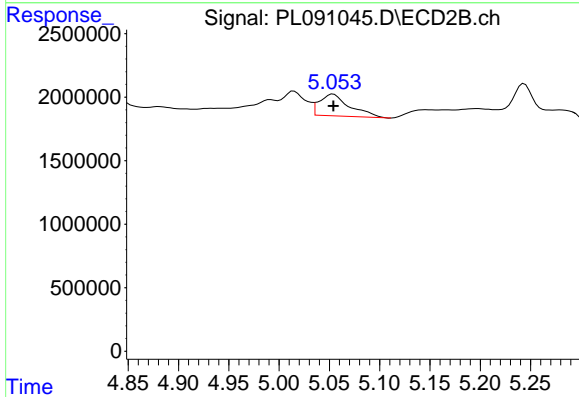
R.T.: 4.992 min
 Delta R.T.: 0.000 min
 Response: 2003146
 Conc: 8.25 ng/ml



#26 Chlordane-4

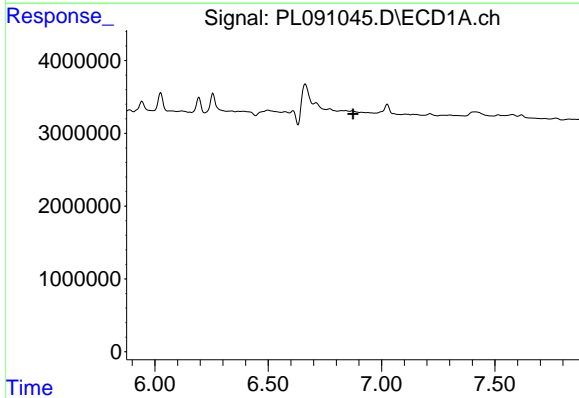
R.T.: 6.026 min
 Delta R.T.: 0.000 min
 Response: 7177088
 Conc: 17.06 ng/ml

Instrument :
 ECD_L
 ClientSampleId :



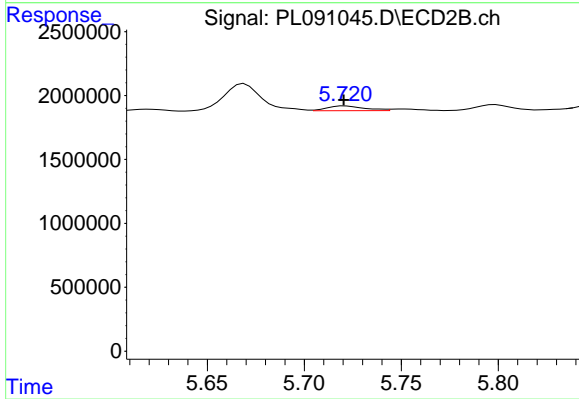
#26 Chlordane-4

R.T.: 5.054 min
 Delta R.T.: 0.000 min
 Response: 3565007
 Conc: 15.29 ng/ml



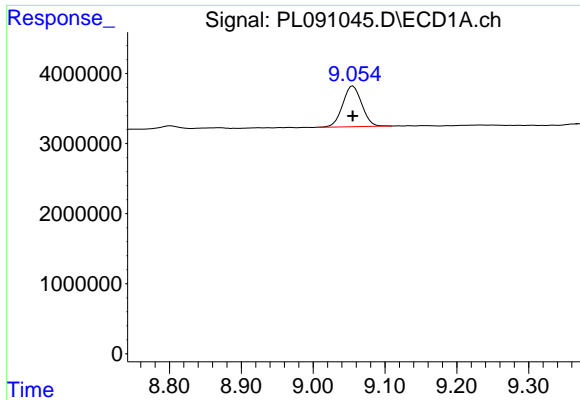
#27 Chlordane-5

R.T.: 0.000 min
 Exp R.T. : 6.875 min
 Response: 0
 Conc: N.D.



#27 Chlordane-5

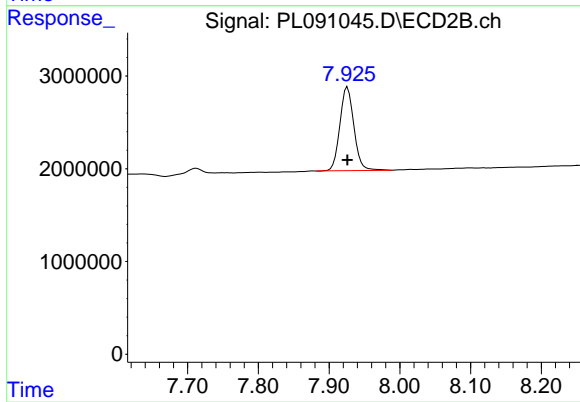
R.T.: 5.721 min
 Delta R.T.: 0.000 min
 Response: 503237
 Conc: 7.27 ng/ml



#28 Decachlorobiphenyl

R.T.: 9.055 min
Delta R.T.: 0.000 min
Response: 10711400
Conc: 7.03 ng/ml

Instrument :
ECD_L
ClientSampleId :



#28 Decachlorobiphenyl

R.T.: 7.926 min
Delta R.T.: 0.000 min
Response: 12440928
Conc: 6.57 ng/ml