

Data Path : Z:\pestpcbsrv\HPCHEM1\ECD_L\Data\PL081424\
 Data File : PL091049.D
 Signal(s) : Signal #1: ECD1A.ch Signal #2: ECD2B.ch
 Acq On : 14 Aug 2024 15:30
 Operator : AR\AJ
 Sample : P3518-15
 Misc :
 ALS Vial : 21 Sample Multiplier: 1

Instrument :
 ECD_L
 ClientSampleId :

Integration File signal 1: autoint1.e
 Integration File signal 2: autoint2.e
 Quant Time: Aug 15 03:46:10 2024
 Quant Method : Z:\pestpcbsrv\HPCHEM1\ECD_L\methods\PL081324.M
 Quant Title : GC Extractables
 QLast Update : Wed Aug 14 13:09:19 2024
 Response via : Initial Calibration
 Integrator: ChemStation

Volume Inj. : 1 µl
 Signal #1 Phase : ZB-MR2 Signal #2 Phase: ZB-MR1
 Signal #1 Info : 30M x 0.32mm x0.2 Signal #2 Info : 30M x 0.32mm x0.5µm

Compound	RT#1	RT#2	Resp#1	Resp#2	ng/ml	ng/ml

System Monitoring Compounds						
1) SA Tetrachlo...	3.544	2.784	22844989	19600394	10.640	10.041
28) SA Decachlor...	9.056	7.925	13094379	14952683	8.589	7.894
Target Compounds						
2) A alpha-BHC	0.000	3.277	0	167953	N.D.	0.061 #
3) MA gamma-BHC...	0.000	3.632	0	386001	N.D.	0.147 #
4) MA Heptachlor	0.000	3.956	0	1032065	N.D.	0.400 #
5) MB Aldrin	0.000	4.245	0	462041	N.D.	0.188 #
7) B delta-BHC	0.000	4.153	0	304922	N.D.	0.120 #
8) B Heptachlo...	0.000	4.741	0	278859	N.D.	0.124 #
10) B gamma-Chl...	5.944	4.971f	3209766	1482588	1.328	0.627 #
11) B alpha-Chl...	6.026	5.053	4706245	3739560	1.955	1.590
12) B 4,4'-DDE	6.194	5.244	4363619	3406351	2.086	1.630
13) MA Dieldrin	0.000	5.376	0	2139344	N.D.	0.939 #
14) MA Endrin	0.000	5.662	0	215618	N.D.	0.106 #
16) A 4,4'-DDD	0.000	5.798	0	574436	N.D.	0.348 #
17) MA 4,4'-DDT	7.024	6.046	1769277	3068515	0.997	1.727 #
18) B Endrin al...	0.000	6.143f	0	236544	N.D.	0.152 #
19) B Endosulfa...	0.000	6.343	0	376790	N.D.	0.195 #
23) Chlordane-1	0.000	3.784	0	1864637	N.D.	25.577 #
24) Chlordane-2	0.000	4.362	0	745523	N.D.	7.935 #
25) Chlordane-3	5.944	4.971f	3209766	1482588	9.241	6.105 #
26) Chlordane-4	6.026	5.053	4706245	3739560	11.189	16.038 #
27) Chlordane-5	0.000	5.720	0	1101631	N.D.	15.911 #

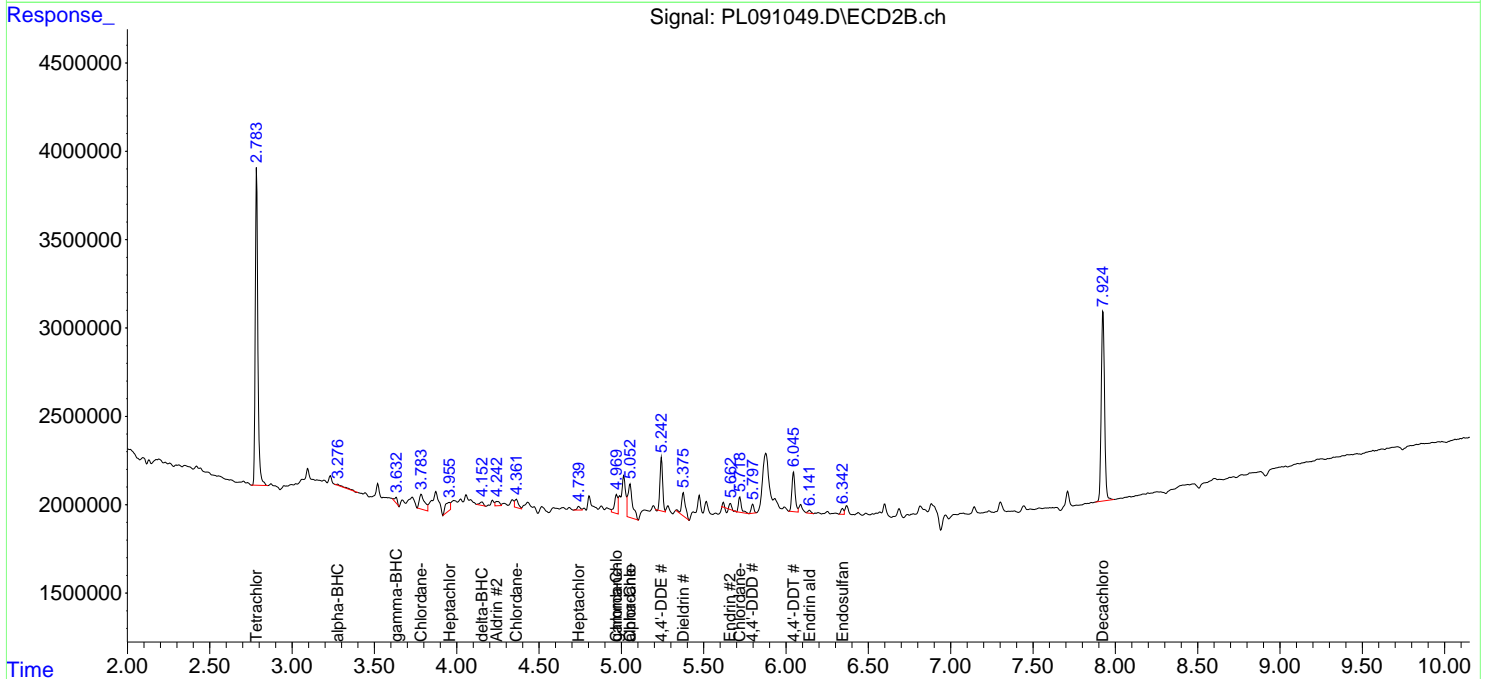
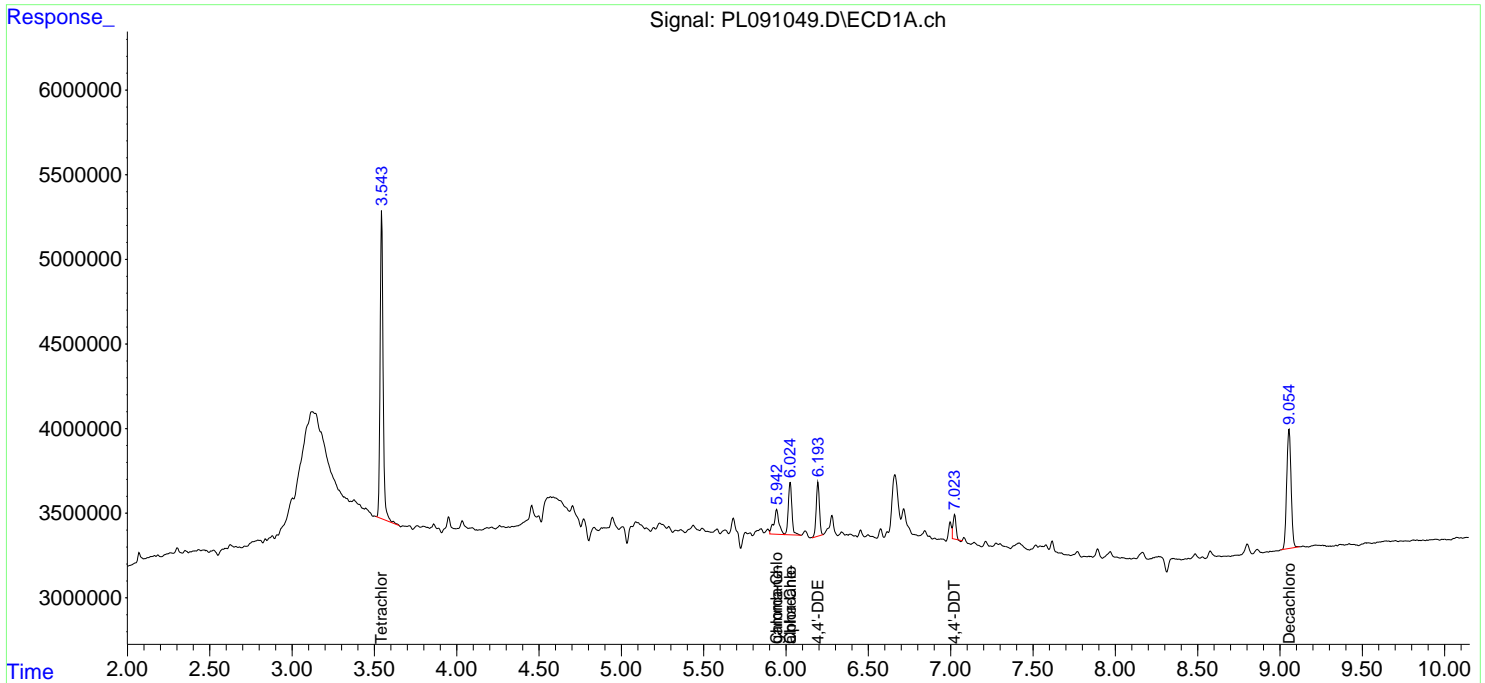
(f)=RT Delta > 1/2 Window (#)=Amounts differ by > 25% (m)=manual int.

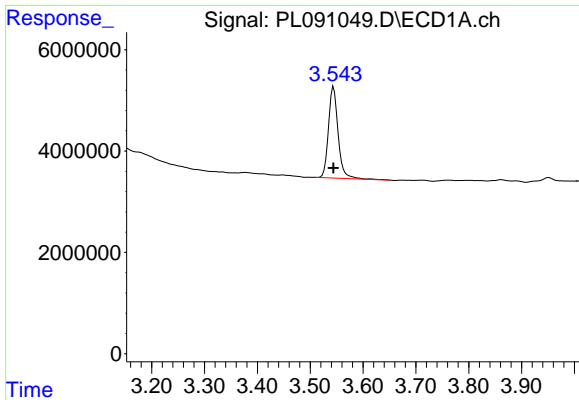
Data Path : Z:\pestpcbsrv\HPCHEM1\ECD_L\Data\PL081424\
 Data File : PL091049.D
 Signal(s) : Signal #1: ECD1A.ch Signal #2: ECD2B.ch
 Acq On : 14 Aug 2024 15:30
 Operator : AR\AJ
 Sample : P3518-15
 Misc :
 ALS Vial : 21 Sample Multiplier: 1

Instrument :
 ECD_L
 ClientSampleId :

Integration File signal 1: autoint1.e
 Integration File signal 2: autoint2.e
 Quant Time: Aug 15 03:46:10 2024
 Quant Method : Z:\pestpcbsrv\HPCHEM1\ECD_L\methods\PL081324.M
 Quant Title : GC Extractables
 QLast Update : Wed Aug 14 13:09:19 2024
 Response via : Initial Calibration
 Integrator: ChemStation

Volume Inj. : 1 µl
 Signal #1 Phase : ZB-MR2 Signal #2 Phase: ZB-MR1
 Signal #1 Info : 30M x 0.32mm x0.2 Signal #2 Info : 30M x 0.32mm x0.5µm

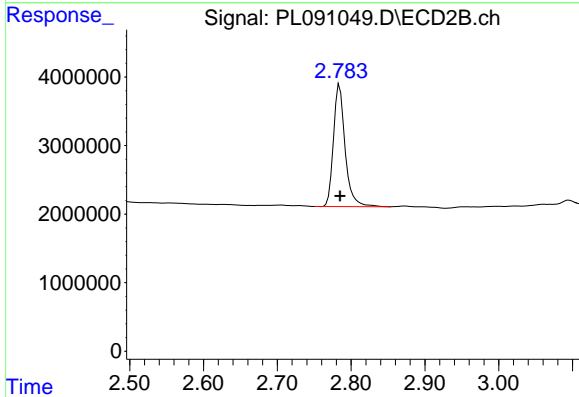




#1 Tetrachloro-m-xylene

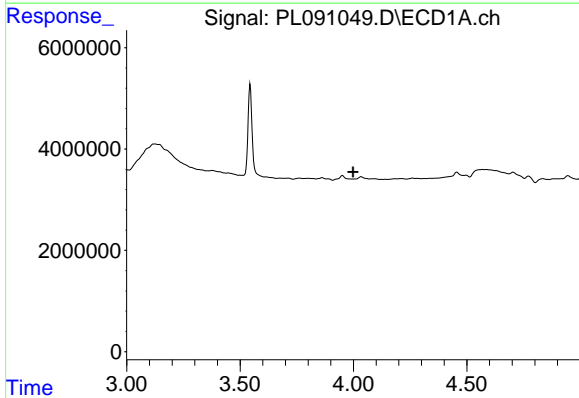
R.T.: 3.544 min
 Delta R.T.: 0.000 min
 Response: 22844989
 Conc: 10.64 ng/ml

Instrument :
 ECD_L
 ClientSampleId :



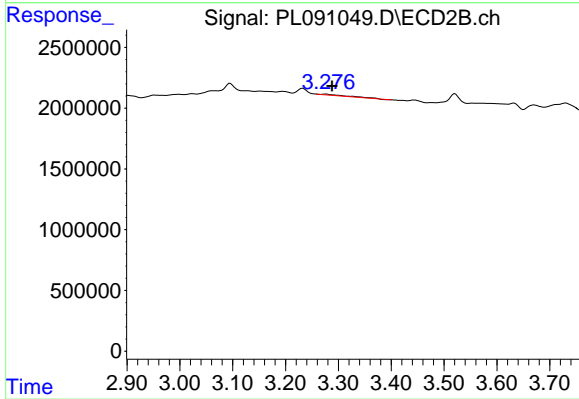
#1 Tetrachloro-m-xylene

R.T.: 2.784 min
 Delta R.T.: 0.000 min
 Response: 19600394
 Conc: 10.04 ng/ml



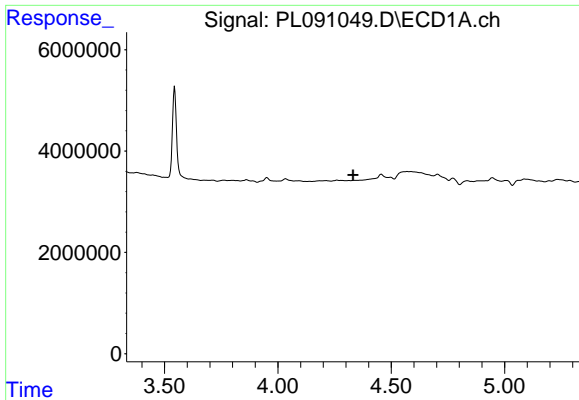
#2 alpha-BHC

R.T.: 0.000 min
 Exp R.T. : 3.999 min
 Response: 0
 Conc: N.D.



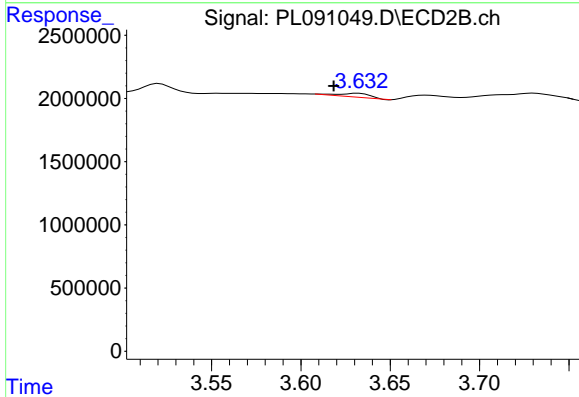
#2 alpha-BHC

R.T.: 3.277 min
 Delta R.T.: -0.011 min
 Response: 167953
 Conc: 0.06 ng/ml

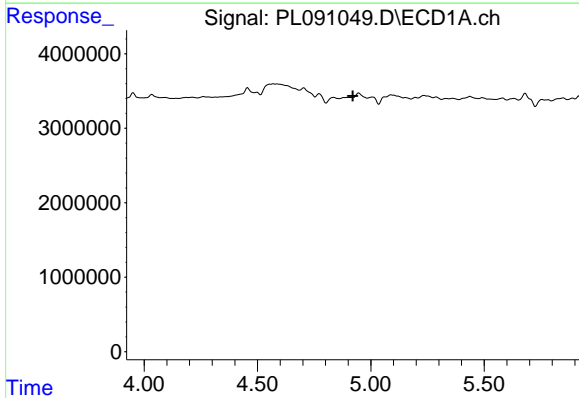


#3 gamma-BHC (Lindane)
 R.T.: 0.000 min
 Exp R.T.: 4.332 min
 Response: 0
 Conc: N.D.

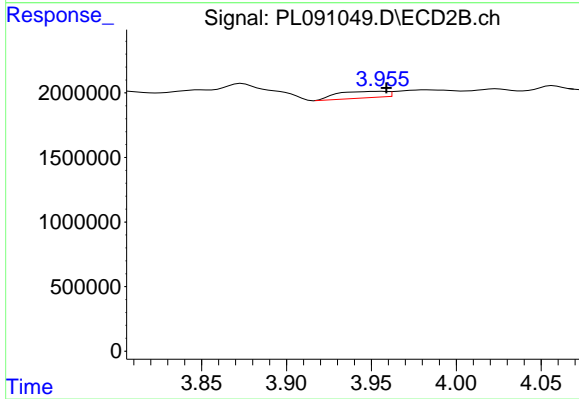
Instrument :
 ECD_L
 ClientSampleId :



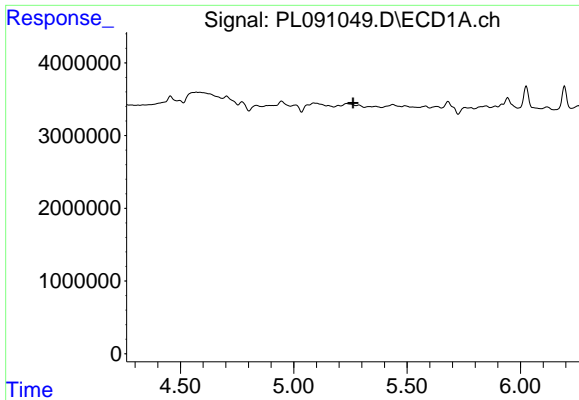
#3 gamma-BHC (Lindane)
 R.T.: 3.632 min
 Delta R.T.: 0.014 min
 Response: 386001
 Conc: 0.15 ng/ml



#4 Heptachlor
 R.T.: 0.000 min
 Exp R.T.: 4.921 min
 Response: 0
 Conc: N.D.

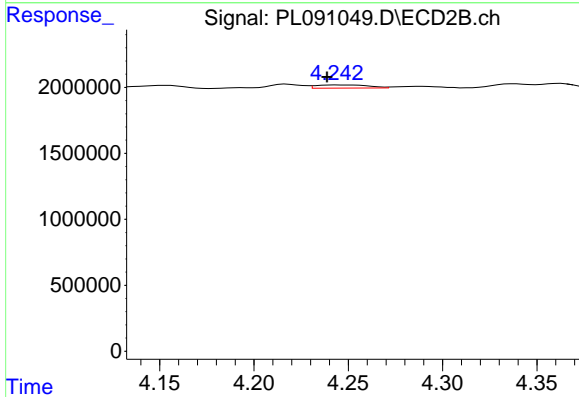


#4 Heptachlor
 R.T.: 3.956 min
 Delta R.T.: -0.003 min
 Response: 1032065
 Conc: 0.40 ng/ml

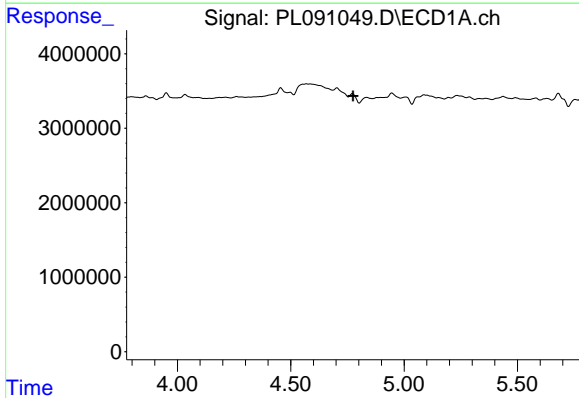


#5 Aldrin
 R.T.: 0.000 min
 Exp R.T.: 5.262 min
 Response: 0
 Conc: N.D.

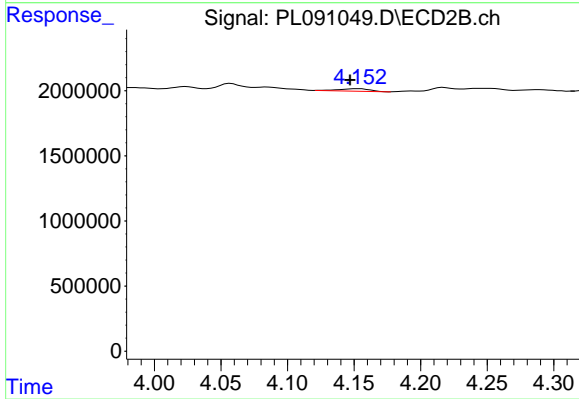
Instrument :
 ECD_L
 ClientSampleId :



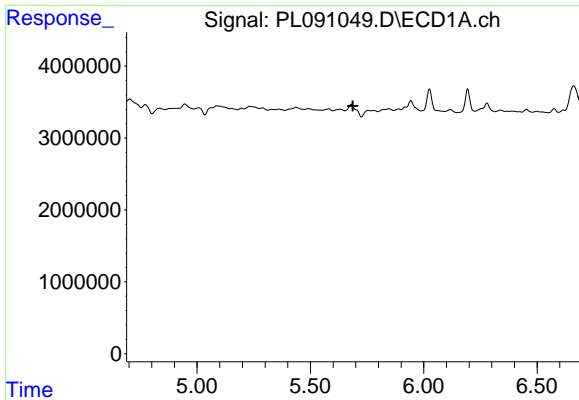
#5 Aldrin
 R.T.: 4.245 min
 Delta R.T.: 0.006 min
 Response: 462041
 Conc: 0.19 ng/ml



#7 delta-BHC
 R.T.: 0.000 min
 Exp R.T.: 4.775 min
 Response: 0
 Conc: N.D.



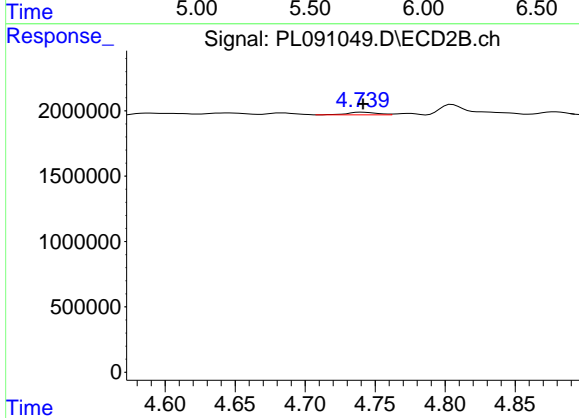
#7 delta-BHC
 R.T.: 4.153 min
 Delta R.T.: 0.006 min
 Response: 304922
 Conc: 0.12 ng/ml



#8 Heptachlor epoxide

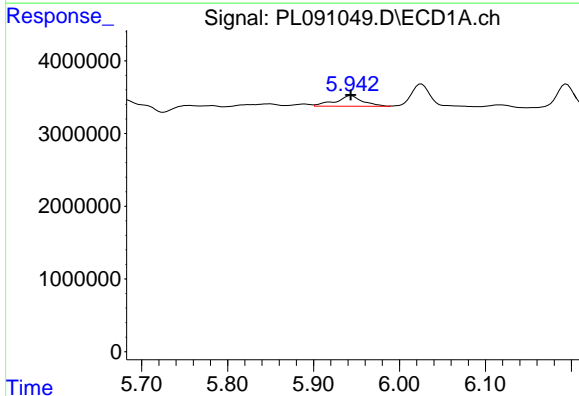
R.T.: 0.000 min
 Exp R.T.: 5.688 min
 Response: 0
 Conc: N.D.

Instrument :
 ECD_L
 ClientSampleId :



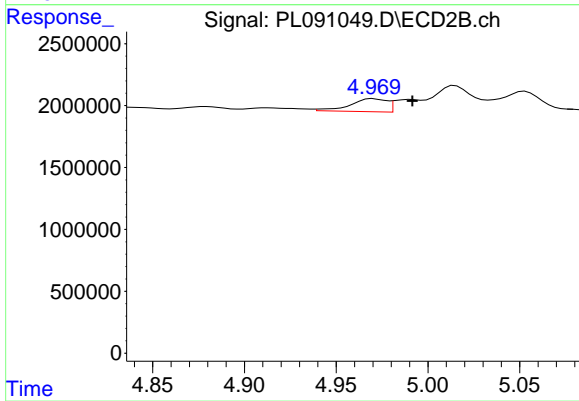
#8 Heptachlor epoxide

R.T.: 4.741 min
 Delta R.T.: 0.000 min
 Response: 278859
 Conc: 0.12 ng/ml



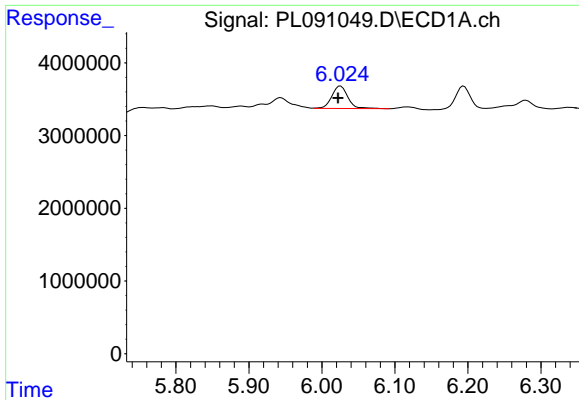
#10 gamma-Chlordane

R.T.: 5.944 min
 Delta R.T.: 0.000 min
 Response: 3209766
 Conc: 1.33 ng/ml



#10 gamma-Chlordane

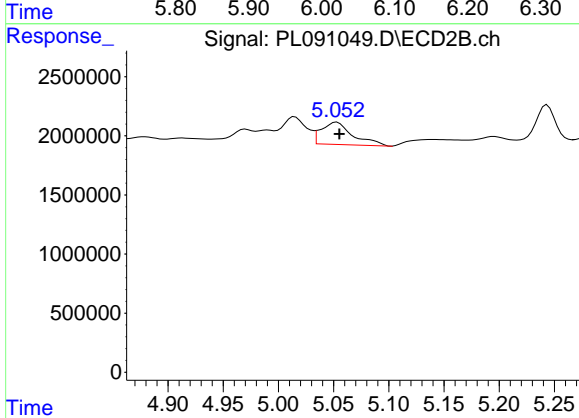
R.T.: 4.971 min
 Delta R.T.: -0.021 min
 Response: 1482588
 Conc: 0.63 ng/ml



#11 alpha-Chlordane

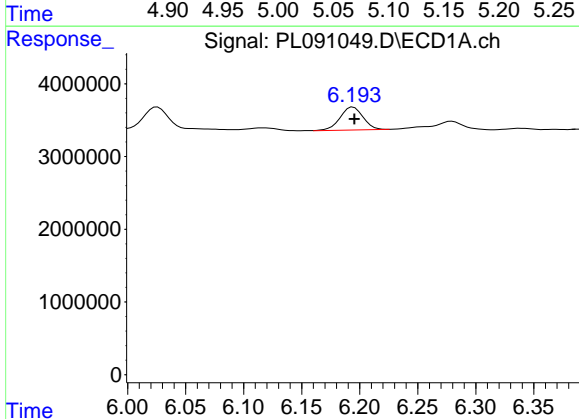
R.T.: 6.026 min
 Delta R.T.: 0.003 min
 Response: 4706245
 Conc: 1.95 ng/ml

Instrument :
 ECD_L
 ClientSampleId :



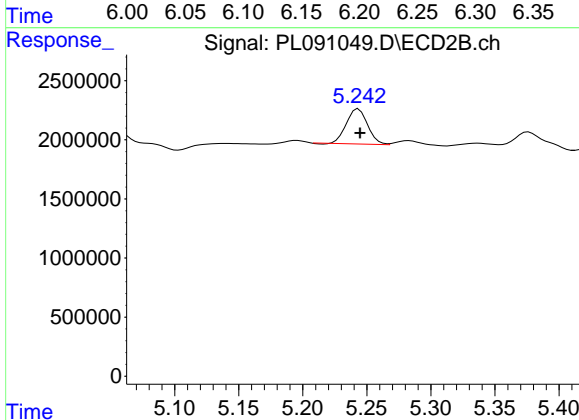
#11 alpha-Chlordane

R.T.: 5.053 min
 Delta R.T.: -0.002 min
 Response: 3739560
 Conc: 1.59 ng/ml



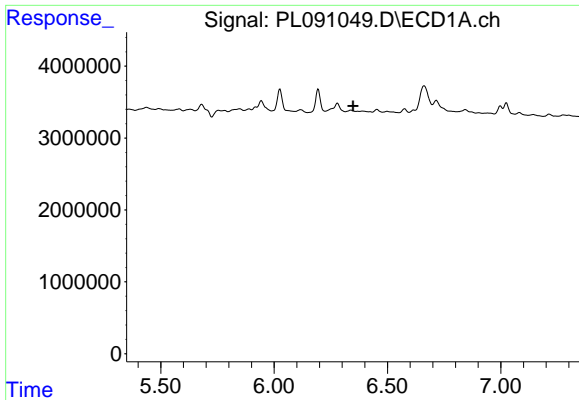
#12 4,4'-DDE

R.T.: 6.194 min
 Delta R.T.: 0.000 min
 Response: 4363619
 Conc: 2.09 ng/ml



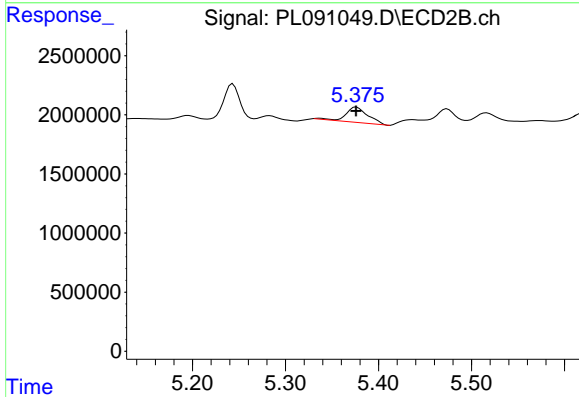
#12 4,4'-DDE

R.T.: 5.244 min
 Delta R.T.: -0.001 min
 Response: 3406351
 Conc: 1.63 ng/ml

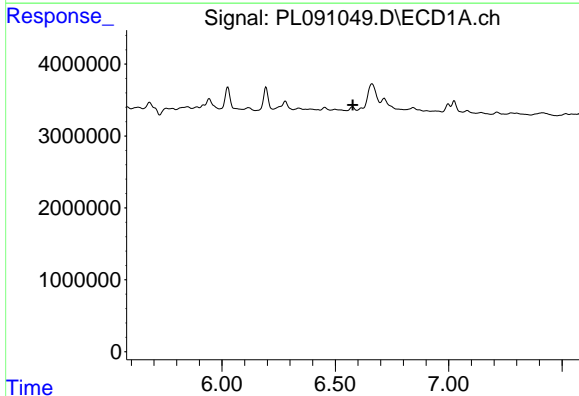


#13 Dieldrin
 R.T.: 0.000 min
 Exp R.T.: 6.348 min
 Response: 0
 Conc: N.D.

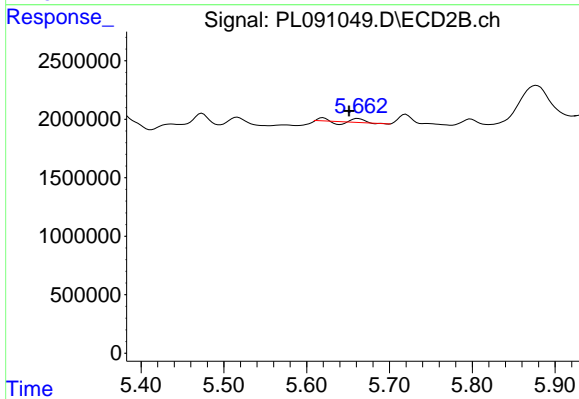
Instrument :
 ECD_L
 ClientSampleId :



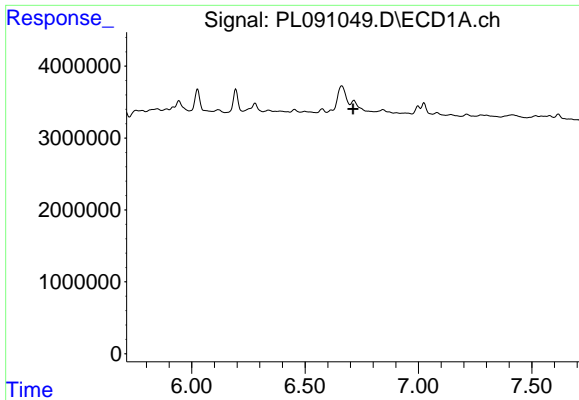
#13 Dieldrin
 R.T.: 5.376 min
 Delta R.T.: 0.000 min
 Response: 2139344
 Conc: 0.94 ng/ml



#14 Endrin
 R.T.: 0.000 min
 Exp R.T.: 6.577 min
 Response: 0
 Conc: N.D.



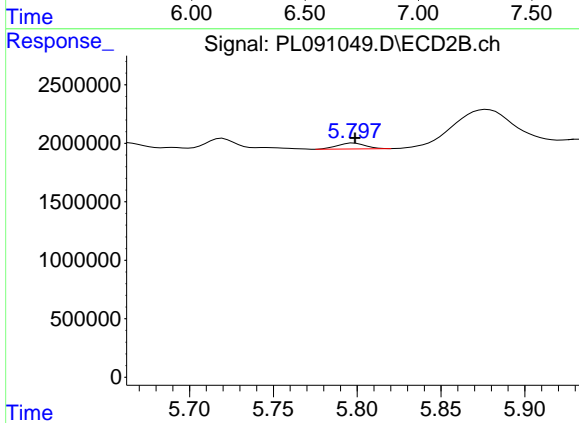
#14 Endrin
 R.T.: 5.662 min
 Delta R.T.: 0.011 min
 Response: 215618
 Conc: 0.11 ng/ml



#16 4,4'-DDD

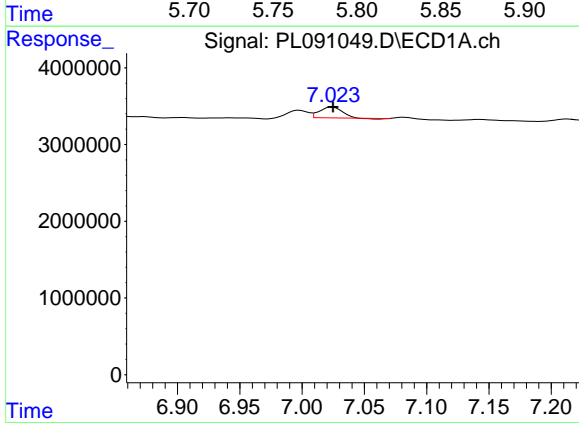
R.T.: 0.000 min
 Exp R.T.: 6.711 min
 Response: 0
 Conc: N.D.

Instrument :
 ECD_L
 ClientSampleId :



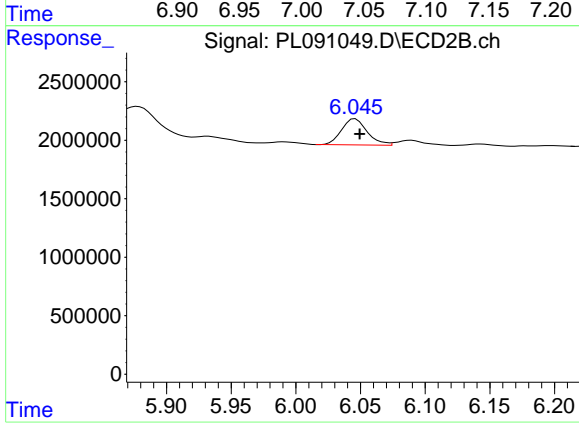
#16 4,4'-DDD

R.T.: 5.798 min
 Delta R.T.: 0.000 min
 Response: 574436
 Conc: 0.35 ng/ml



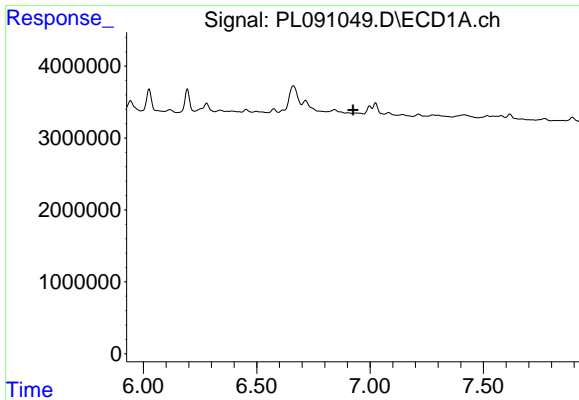
#17 4,4'-DDT

R.T.: 7.024 min
 Delta R.T.: 0.000 min
 Response: 1769277
 Conc: 1.00 ng/ml



#17 4,4'-DDT

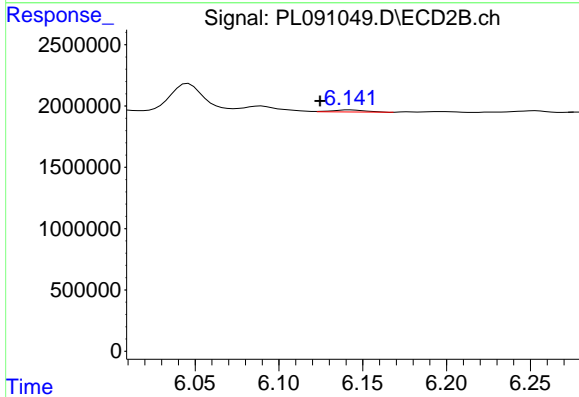
R.T.: 6.046 min
 Delta R.T.: -0.003 min
 Response: 3068515
 Conc: 1.73 ng/ml



#18 Endrin aldehyde

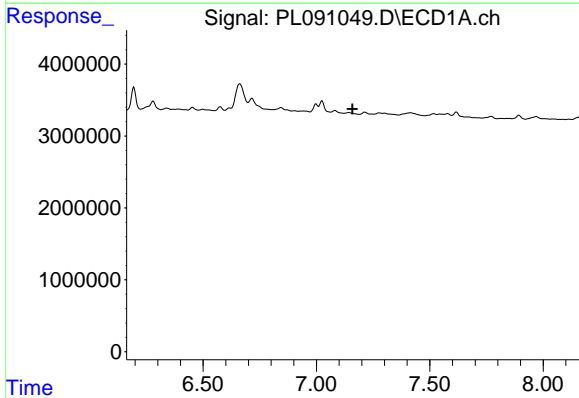
R.T.: 0.000 min
 Exp R.T.: 6.925 min
 Response: 0
 Conc: N.D.

Instrument :
 ECD_L
 ClientSampleId :



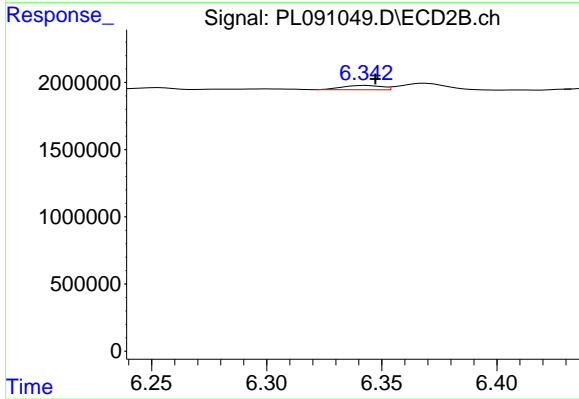
#18 Endrin aldehyde

R.T.: 6.143 min
 Delta R.T.: 0.018 min
 Response: 236544
 Conc: 0.15 ng/ml



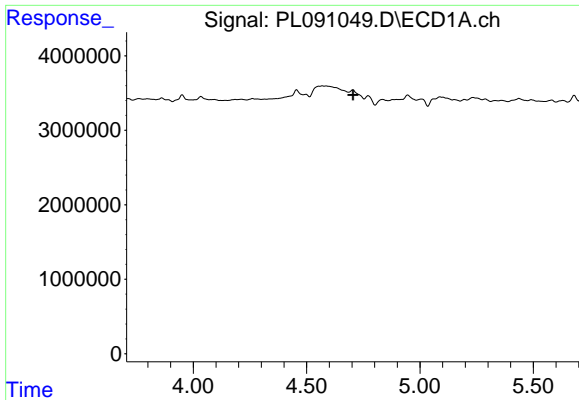
#19 Endosulfan Sulfate

R.T.: 0.000 min
 Exp R.T.: 7.160 min
 Response: 0
 Conc: N.D.



#19 Endosulfan Sulfate

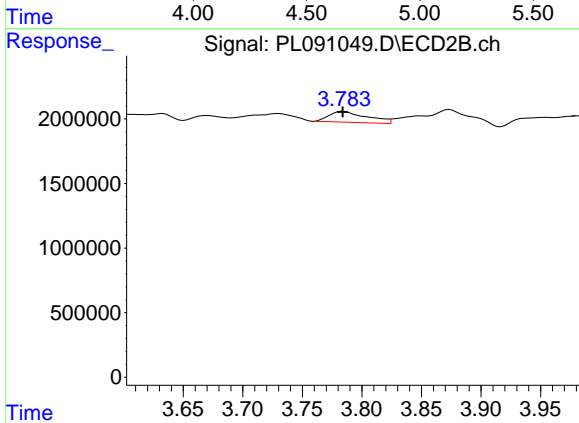
R.T.: 6.343 min
 Delta R.T.: -0.004 min
 Response: 376790
 Conc: 0.20 ng/ml



#23 Chlordane-1

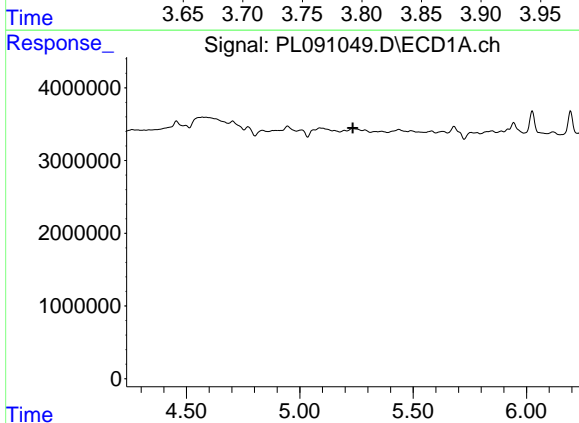
R.T.: 0.000 min
 Exp R.T. : 4.706 min
 Response: 0
 Conc: N.D.

Instrument :
 ECD_L
 ClientSampleId :



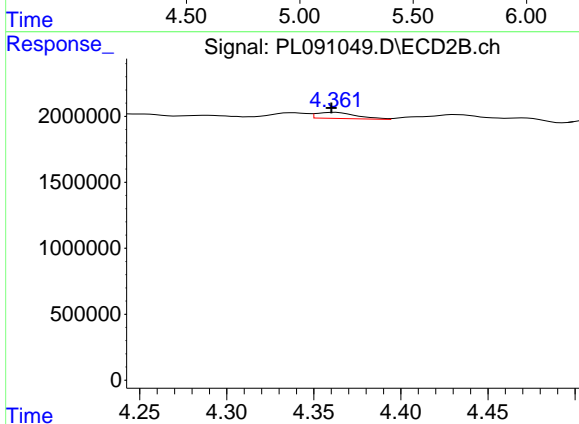
#23 Chlordane-1

R.T.: 3.784 min
 Delta R.T.: 0.000 min
 Response: 1864637
 Conc: 25.58 ng/ml



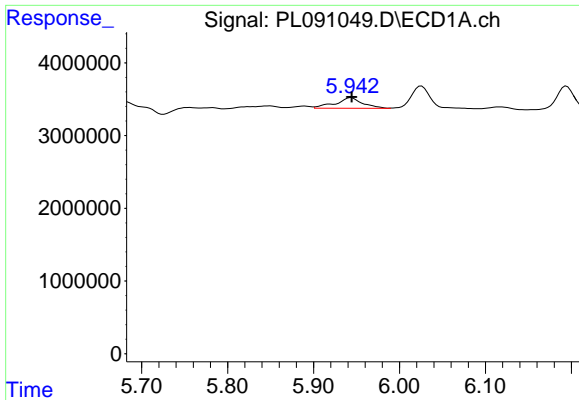
#24 Chlordane-2

R.T.: 0.000 min
 Exp R.T. : 5.234 min
 Response: 0
 Conc: N.D.



#24 Chlordane-2

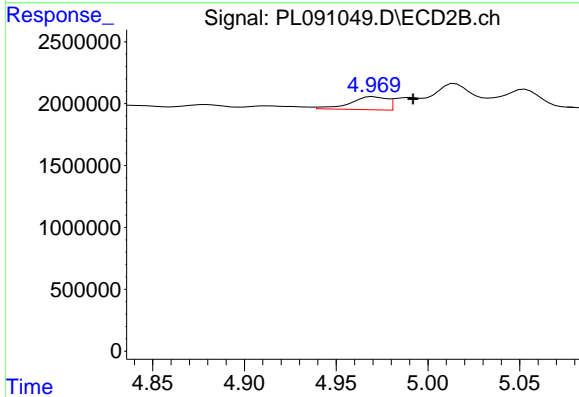
R.T.: 4.362 min
 Delta R.T.: 0.002 min
 Response: 745523
 Conc: 7.93 ng/ml



#25 Chlordane-3

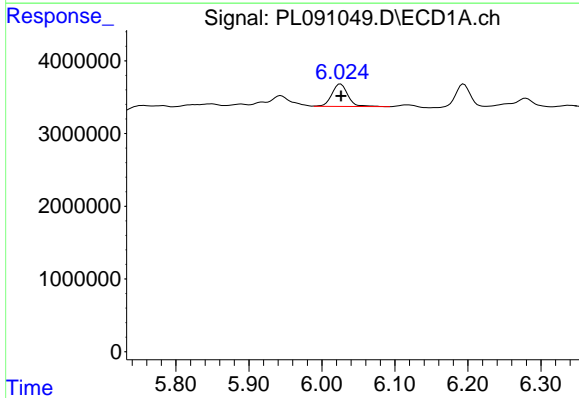
R.T.: 5.944 min
 Delta R.T.: 0.000 min
 Response: 3209766
 Conc: 9.24 ng/ml

Instrument :
 ECD_L
 ClientSampleId :



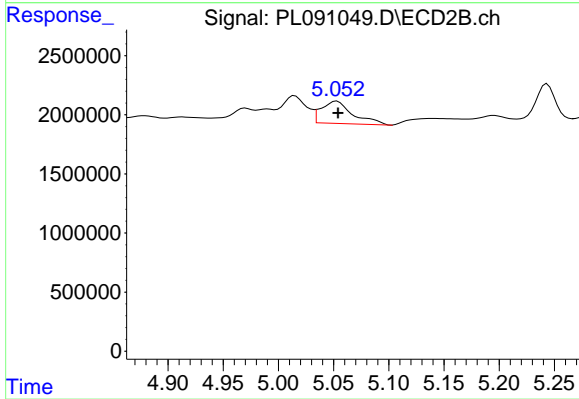
#25 Chlordane-3

R.T.: 4.971 min
 Delta R.T.: -0.021 min
 Response: 1482588
 Conc: 6.11 ng/ml



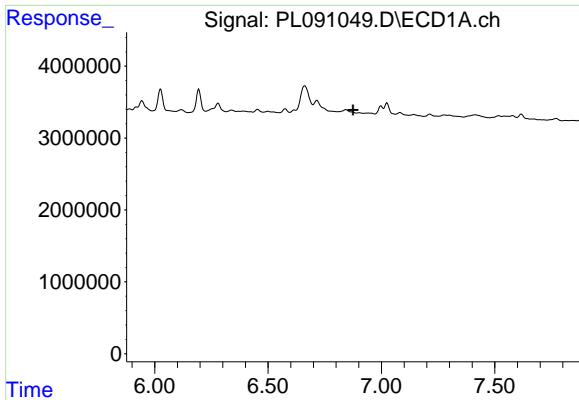
#26 Chlordane-4

R.T.: 6.026 min
 Delta R.T.: 0.000 min
 Response: 4706245
 Conc: 11.19 ng/ml



#26 Chlordane-4

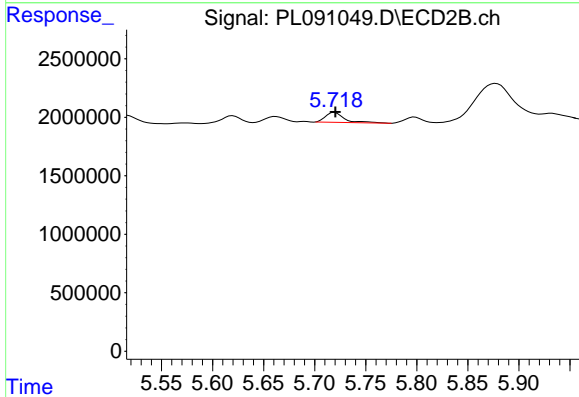
R.T.: 5.053 min
 Delta R.T.: -0.001 min
 Response: 3739560
 Conc: 16.04 ng/ml



#27 Chlordane-5

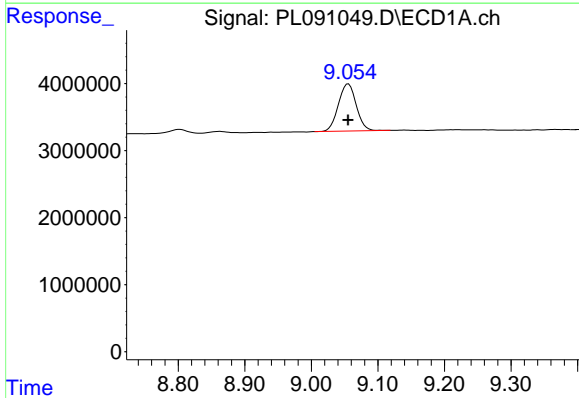
R.T.: 0.000 min
 Exp R.T.: 6.875 min
 Response: 0
 Conc: N.D.

Instrument :
 ECD_L
 ClientSampleId :



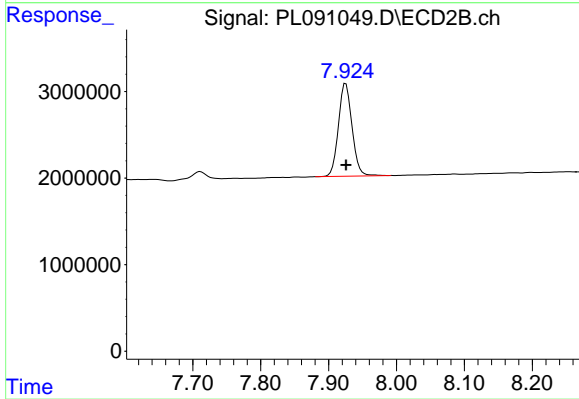
#27 Chlordane-5

R.T.: 5.720 min
 Delta R.T.: 0.000 min
 Response: 1101631
 Conc: 15.91 ng/ml



#28 Decachlorobiphenyl

R.T.: 9.056 min
 Delta R.T.: 0.000 min
 Response: 13094379
 Conc: 8.59 ng/ml



#28 Decachlorobiphenyl

R.T.: 7.925 min
 Delta R.T.: 0.000 min
 Response: 14952683
 Conc: 7.89 ng/ml