

Data Path : Z:\pestpcbsrv\HPCHEM1\ECD_L\Data\PL081424\
 Data File : PL091072.D
 Signal(s) : Signal #1: ECD1A.ch Signal #2: ECD2B.ch
 Acq On : 14 Aug 2024 21:00
 Operator : AR\AJ
 Sample : PB162721BS
 Misc :
 ALS Vial : 40 Sample Multiplier: 1

Instrument :
 ECD_L
 ClientSampleId :
 PB162721BS

Integration File signal 1: autoint1.e
 Integration File signal 2: autoint2.e
 Quant Time: Aug 15 03:53:58 2024
 Quant Method : Z:\pestpcbsrv\HPCHEM1\ECD_L\methods\PL081324.M
 Quant Title : GC Extractables
 QLast Update : Wed Aug 14 13:09:19 2024
 Response via : Initial Calibration
 Integrator: ChemStation

Volume Inj. : 1 µl
 Signal #1 Phase : ZB-MR2 Signal #2 Phase: ZB-MR1
 Signal #1 Info : 30M x 0.32mm x0.2 Signal #2 Info : 30M x 0.32mm x0.5µm

	Compound	RT#1	RT#2	Resp#1	Resp#2	ng/ml	ng/ml

System Monitoring Compounds							
1)	SA Tetrachlo...	3.543	2.784	42414372	37180211	19.754	19.047
28)	SA Decachlor...	9.056	7.925	33296996	39816111	21.841	21.021
Target Compounds							
2)	A alpha-BHC	3.999	3.287	150.8E6	147.0E6	50.308	53.012
3)	MA gamma-BHC...	4.331	3.618	143.8E6	139.0E6	50.122	52.791
4)	MA Heptachlor	4.920	3.958	132.2E6	133.8E6	49.634	51.804
5)	MB Aldrin	5.261	4.238	128.1E6	127.6E6	49.624	51.867
6)	B beta-BHC	4.527	3.916	66909389	60389795	49.476	51.305
7)	B delta-BHC	4.775	4.146	134.9E6	133.5E6	49.568	52.687
8)	B Heptachlo...	5.687	4.740	120.1E6	117.8E6	49.094	52.260
9)	A Endosulfan I	6.073	5.110	111.0E6	110.5E6	49.452	52.350
10)	B gamma-Chl...	5.942	4.990	119.6E6	122.2E6	49.501	51.699
11)	B alpha-Chl...	6.022	5.054	118.7E6	121.3E6	49.298	51.579
12)	B 4,4'-DDE	6.194	5.243	106.5E6	109.9E6	50.924	52.593
13)	MA Dieldrin	6.347	5.374	117.2E6	118.8E6	49.758	52.178
14)	MA Endrin	6.577	5.650	94312587	102.1E6	48.634	50.128
15)	B Endosulfa...	6.795	5.944	102.4E6	103.6E6	50.594	53.534
16)	A 4,4'-DDD	6.711	5.798	88035613	93883681	58.249	56.872
17)	MA 4,4'-DDT	7.025	6.048	88486380	88613685	49.849	49.884
18)	B Endrin al...	6.925	6.123	81590608	81754039	51.109	52.484
19)	B Endosulfa...	7.160	6.345	97193999	100.6E6	50.658	52.175
20)	A Methoxychlor	7.500	6.623	47813222	49212555	50.851	49.560
21)	B Endrin ke...	7.644	6.851	109.4E6	117.8E6	52.101	54.092
22)	Mirex	8.118	7.032	84938325	94211059	49.930	50.477
23)	Chlordane-1	0.000	3.801	0	23785	N.D.	0.326 #
24)	Chlordane-2	5.261f	4.375	128.1E6	572000	1261.323	6.088 #
25)	Chlordane-3	5.942	4.990	119.6E6	122.2E6	344.390	503.283 #
26)	Chlordane-4	6.022	5.054	118.7E6	121.3E6	282.200	520.411 #
27)	Chlordane-5	0.000	5.745f	0	106350	N.D.	1.536 #

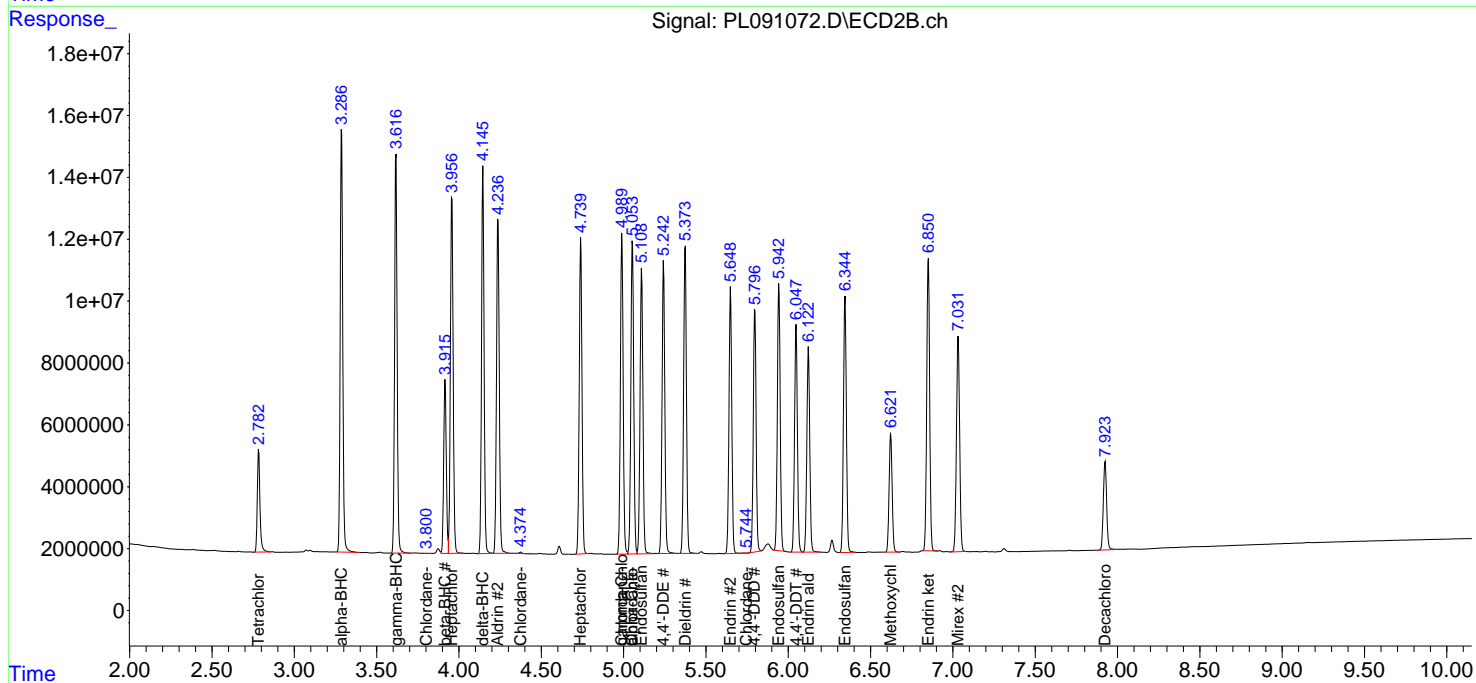
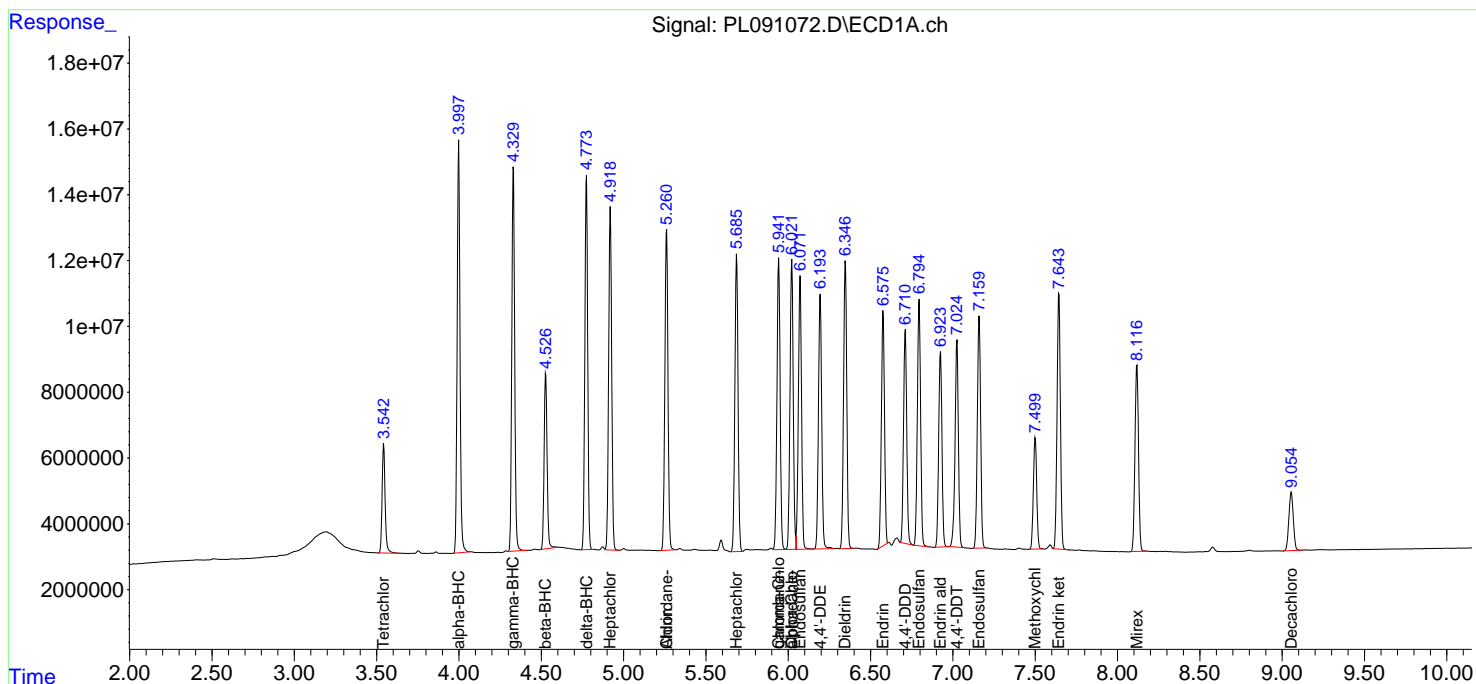
(f)=RT Delta > 1/2 Window (#)=Amounts differ by > 25% (m)=manual int.

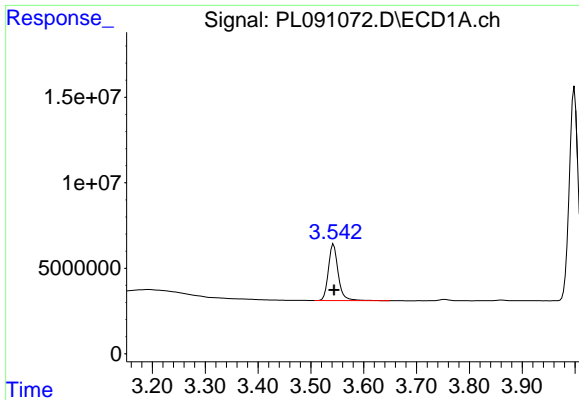
Data Path : Z:\pestpcbsrv\HPCHEM1\ECD_L\Data\PL081424\
 Data File : PL091072.D
 Signal(s) : Signal #1: ECD1A.ch Signal #2: ECD2B.ch
 Acq On : 14 Aug 2024 21:00
 Operator : AR\AJ
 Sample : PB162721BS
 Misc :
 ALS Vial : 40 Sample Multiplier: 1

Instrument :
 ECD_L
 ClientSampleId :
 PB162721BS

Integration File signal 1: autoint1.e
 Integration File signal 2: autoint2.e
 Quant Time: Aug 15 03:53:58 2024
 Quant Method : Z:\pestpcbsrv\HPCHEM1\ECD_L\methods\PL081324.M
 Quant Title : GC Extractables
 QLast Update : Wed Aug 14 13:09:19 2024
 Response via : Initial Calibration
 Integrator: ChemStation

Volume Inj. : 1 µl
 Signal #1 Phase : ZB-MR2 Signal #2 Phase: ZB-MR1
 Signal #1 Info : 30M x 0.32mm x0.2 Signal #2 Info : 30M x 0.32mm x0.5µm

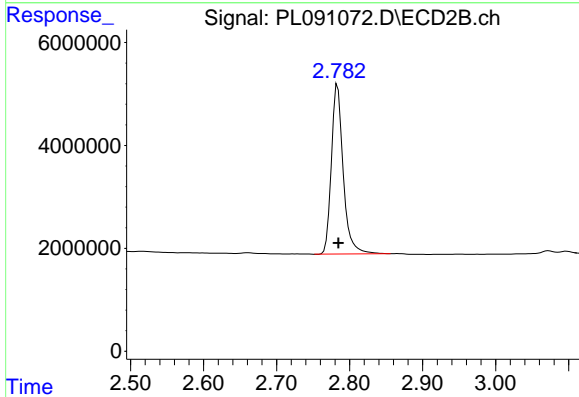




#1 Tetrachloro-m-xylene

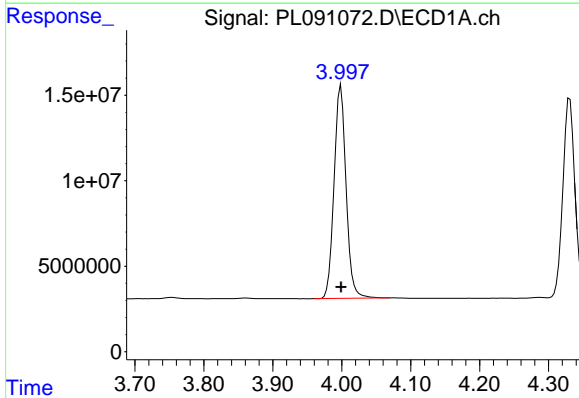
R.T.: 3.543 min
 Delta R.T.: -0.001 min
 Response: 42414372
 Conc: 19.75 ng/ml

Instrument :
 ECD_L
 ClientSampleId :
 PB162721BS



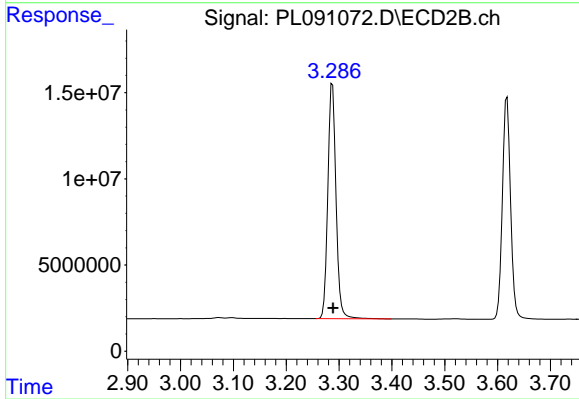
#1 Tetrachloro-m-xylene

R.T.: 2.784 min
 Delta R.T.: -0.001 min
 Response: 37180211
 Conc: 19.05 ng/ml



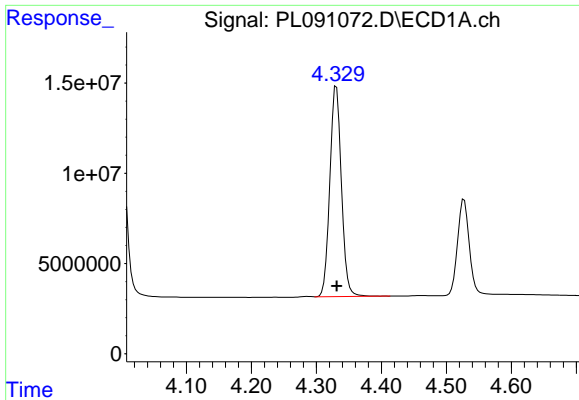
#2 alpha-BHC

R.T.: 3.999 min
 Delta R.T.: 0.000 min
 Response: 150814215
 Conc: 50.31 ng/ml



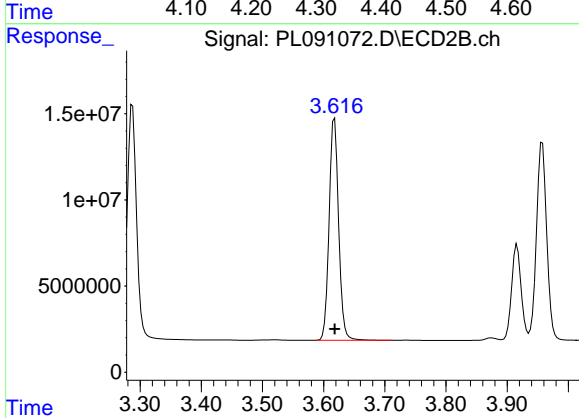
#2 alpha-BHC

R.T.: 3.287 min
 Delta R.T.: -0.001 min
 Response: 147024590
 Conc: 53.01 ng/ml

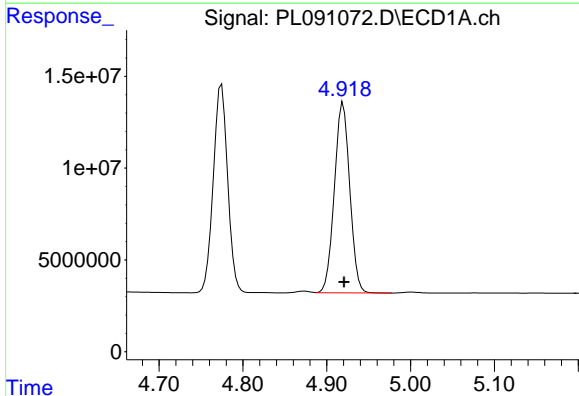


#3 gamma-BHC (Lindane)
 R.T.: 4.331 min
 Delta R.T.: 0.000 min
 Response: 143783268
 Conc: 50.12 ng/ml

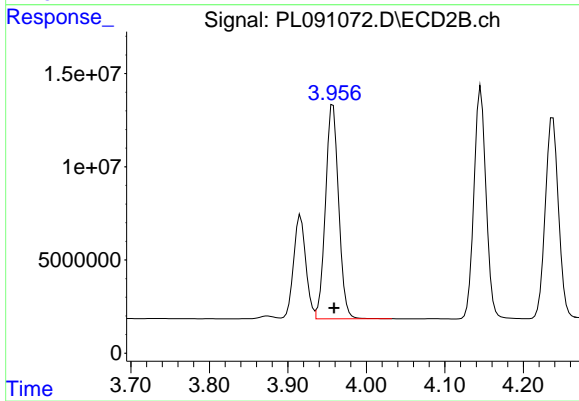
Instrument :
 ECD_L
 ClientSampleId :
 PB162721BS



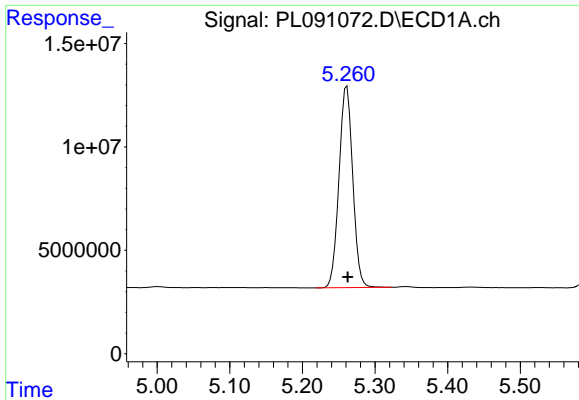
#3 gamma-BHC (Lindane)
 R.T.: 3.618 min
 Delta R.T.: 0.000 min
 Response: 139047600
 Conc: 52.79 ng/ml



#4 Heptachlor
 R.T.: 4.920 min
 Delta R.T.: 0.000 min
 Response: 132176210
 Conc: 49.63 ng/ml



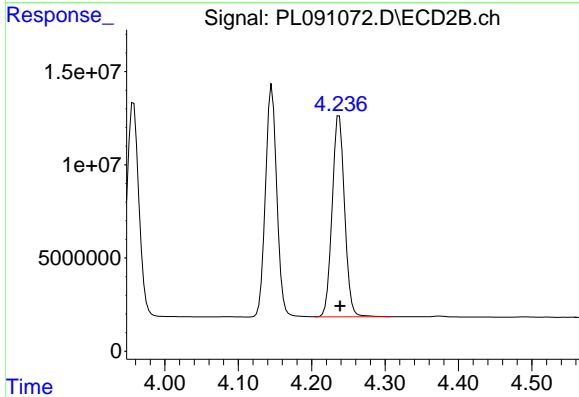
#4 Heptachlor
 R.T.: 3.958 min
 Delta R.T.: -0.001 min
 Response: 133793360
 Conc: 51.80 ng/ml



#5 Aldrin

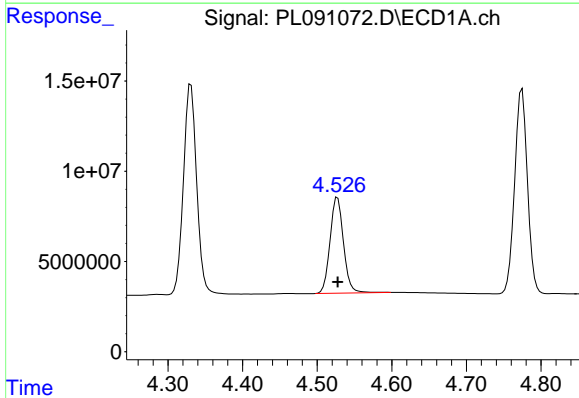
R.T.: 5.261 min
 Delta R.T.: -0.001 min
 Response: 128071702
 Conc: 49.62 ng/ml

Instrument :
 ECD_L
 ClientSampleId :
 PB162721BS



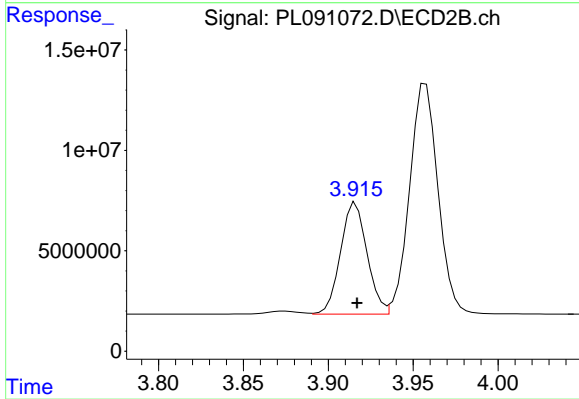
#5 Aldrin

R.T.: 4.238 min
 Delta R.T.: -0.001 min
 Response: 127550514
 Conc: 51.87 ng/ml



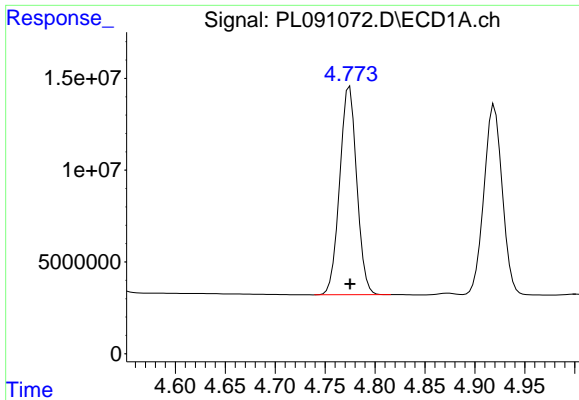
#6 beta-BHC

R.T.: 4.527 min
 Delta R.T.: 0.000 min
 Response: 66909389
 Conc: 49.48 ng/ml



#6 beta-BHC

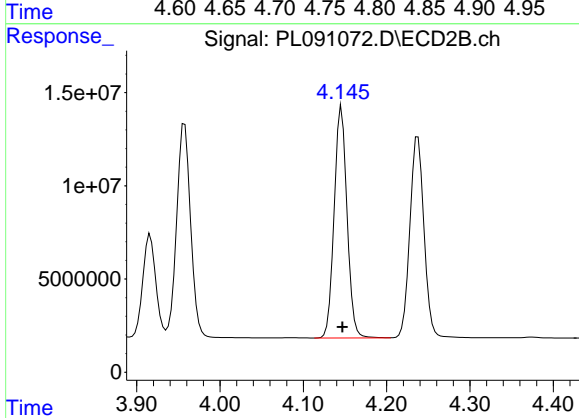
R.T.: 3.916 min
 Delta R.T.: 0.000 min
 Response: 60389795
 Conc: 51.31 ng/ml



#7 delta-BHC

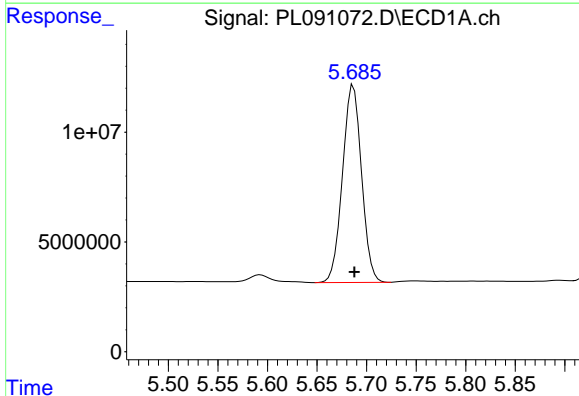
R.T.: 4.775 min
 Delta R.T.: 0.000 min
 Response: 134948685
 Conc: 49.57 ng/ml

Instrument :
 ECD_L
 ClientSampleId :
 PB162721BS



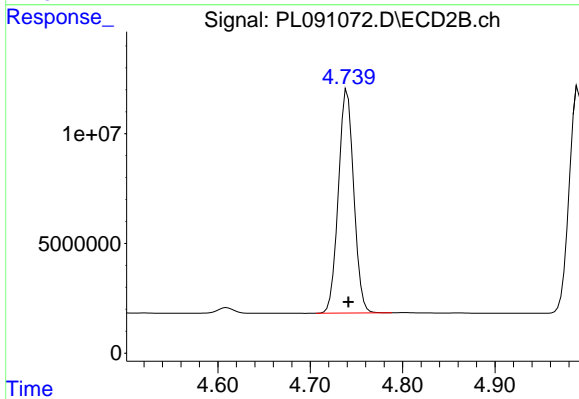
#7 delta-BHC

R.T.: 4.146 min
 Delta R.T.: -0.001 min
 Response: 133521299
 Conc: 52.69 ng/ml



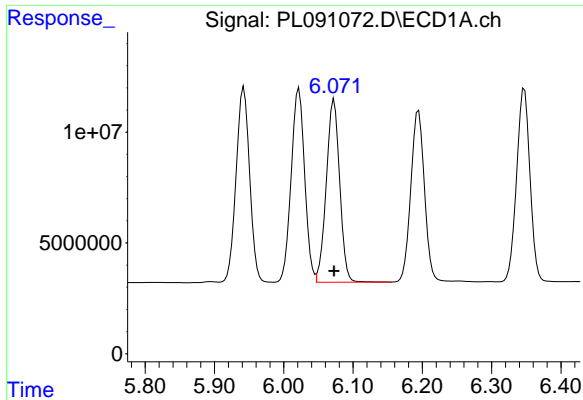
#8 Heptachlor epoxide

R.T.: 5.687 min
 Delta R.T.: -0.001 min
 Response: 120109764
 Conc: 49.09 ng/ml



#8 Heptachlor epoxide

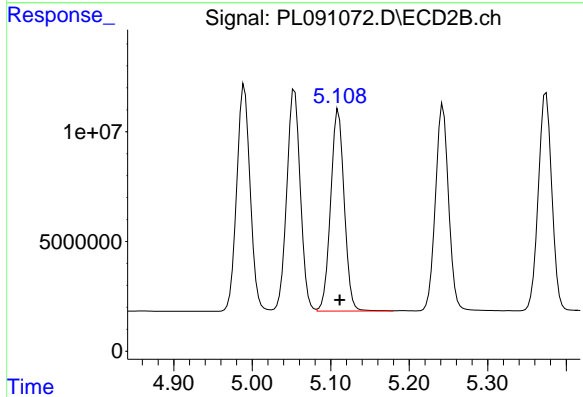
R.T.: 4.740 min
 Delta R.T.: -0.001 min
 Response: 117837438
 Conc: 52.26 ng/ml



#9 Endosulfan I

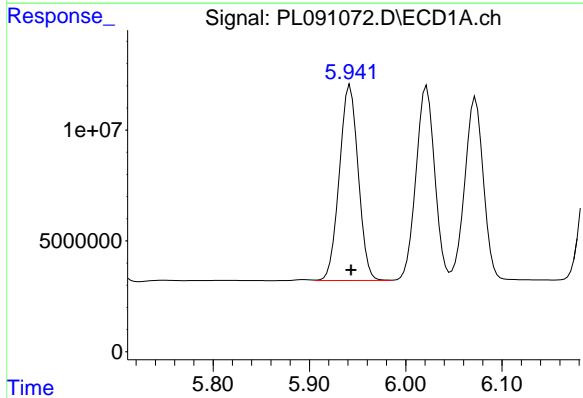
R.T.: 6.073 min
 Delta R.T.: 0.000 min
 Response: 111037399
 Conc: 49.45 ng/ml

Instrument :
 ECD_L
 ClientSampleId :
 PB162721BS



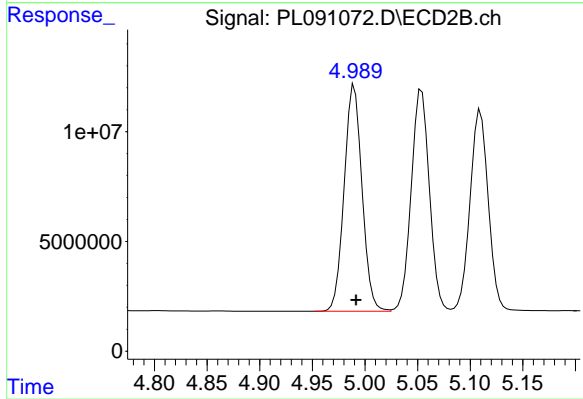
#9 Endosulfan I

R.T.: 5.110 min
 Delta R.T.: -0.001 min
 Response: 110468294
 Conc: 52.35 ng/ml



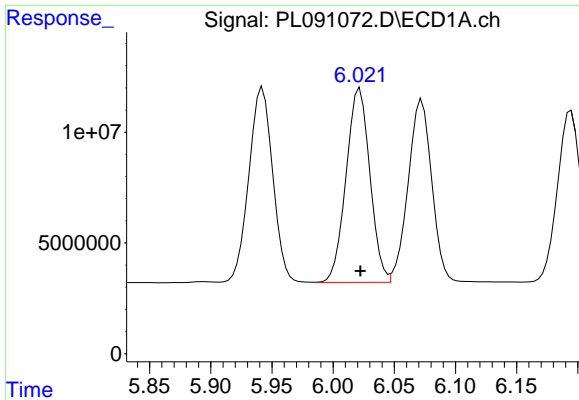
#10 gamma-Chlordane

R.T.: 5.942 min
 Delta R.T.: 0.000 min
 Response: 119615284
 Conc: 49.50 ng/ml



#10 gamma-Chlordane

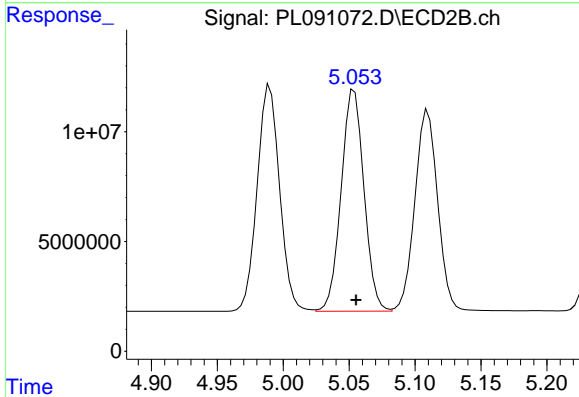
R.T.: 4.990 min
 Delta R.T.: -0.002 min
 Response: 122214924
 Conc: 51.70 ng/ml



#11 alpha-Chlordane

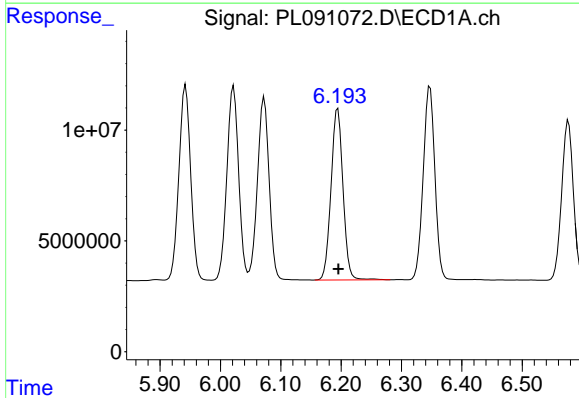
R.T.: 6.022 min
 Delta R.T.: 0.000 min
 Response: 118696806
 Conc: 49.30 ng/ml

Instrument :
 ECD_L
 ClientSampleId :
 PB162721BS



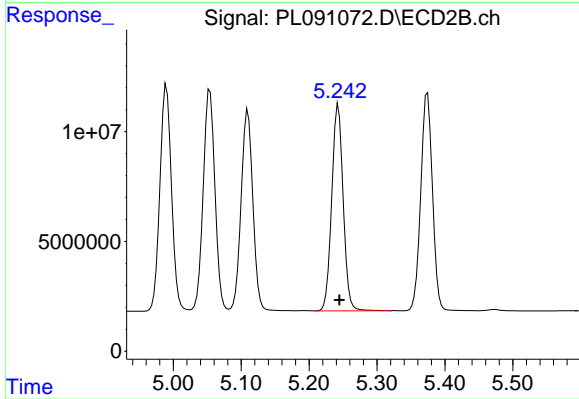
#11 alpha-Chlordane

R.T.: 5.054 min
 Delta R.T.: -0.001 min
 Response: 121343592
 Conc: 51.58 ng/ml



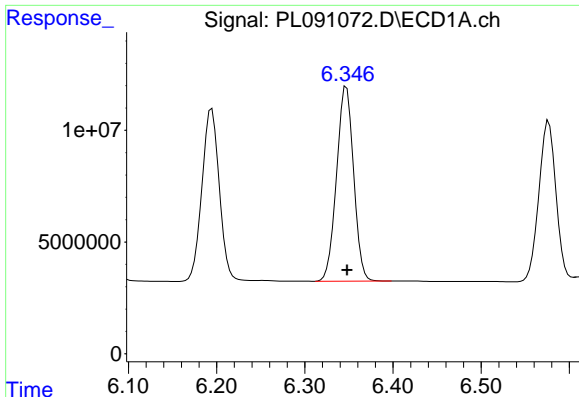
#12 4,4'-DDE

R.T.: 6.194 min
 Delta R.T.: 0.000 min
 Response: 106537893
 Conc: 50.92 ng/ml



#12 4,4'-DDE

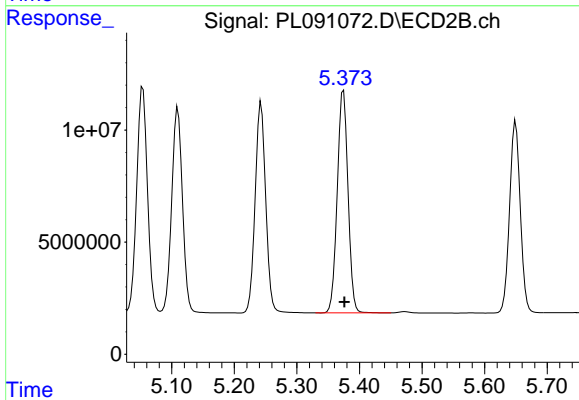
R.T.: 5.243 min
 Delta R.T.: -0.002 min
 Response: 109889193
 Conc: 52.59 ng/ml



#13 Dieldrin

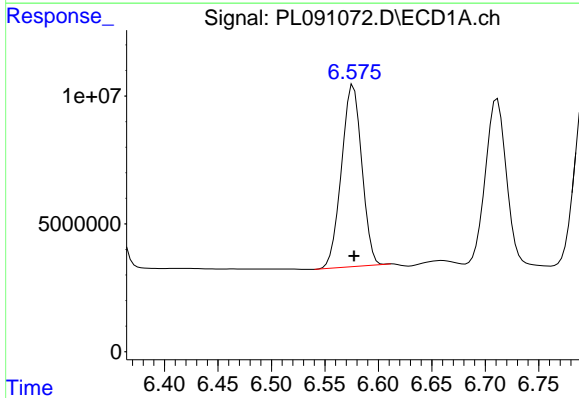
R.T.: 6.347 min
 Delta R.T.: 0.000 min
 Response: 117191895
 Conc: 49.76 ng/ml

Instrument :
 ECD_L
 ClientSampleId :
 PB162721BS



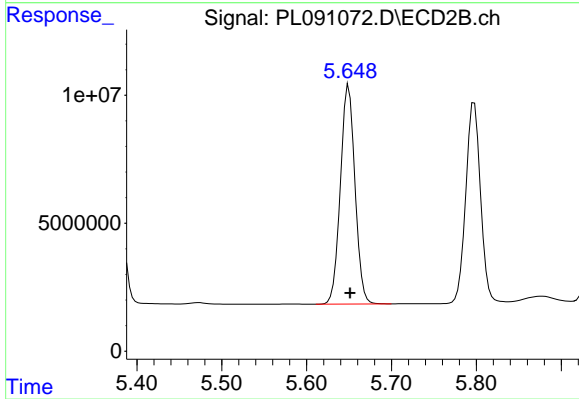
#13 Dieldrin

R.T.: 5.374 min
 Delta R.T.: -0.002 min
 Response: 118837012
 Conc: 52.18 ng/ml



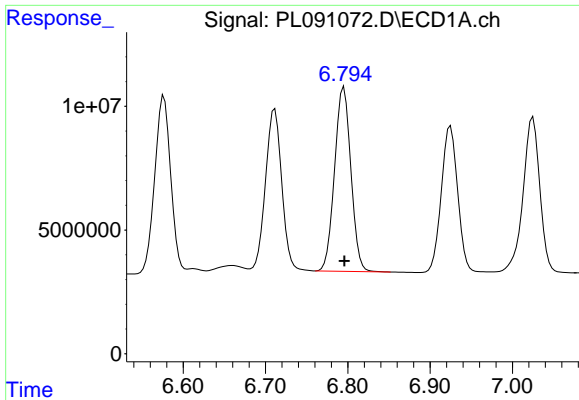
#14 Endrin

R.T.: 6.577 min
 Delta R.T.: 0.000 min
 Response: 94312587
 Conc: 48.63 ng/ml



#14 Endrin

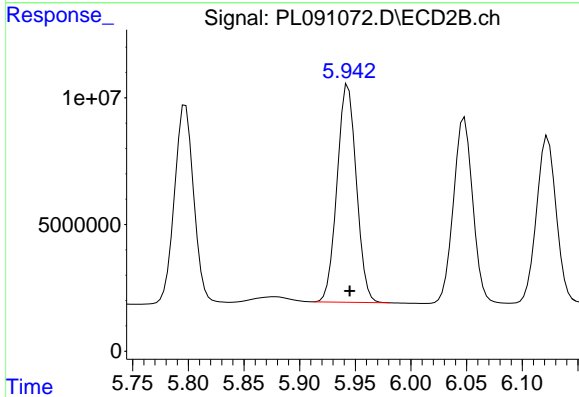
R.T.: 5.650 min
 Delta R.T.: -0.001 min
 Response: 102118319
 Conc: 50.13 ng/ml



#15 Endosulfan II

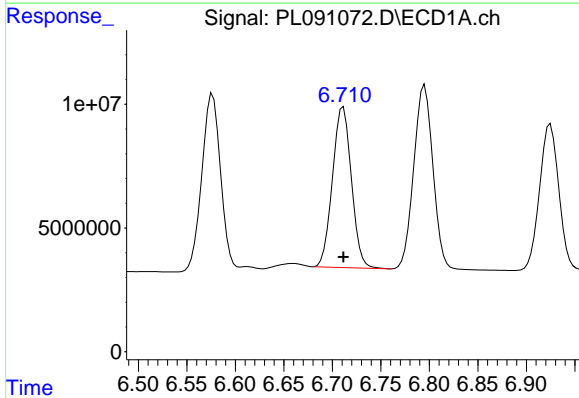
R.T.: 6.795 min
 Delta R.T.: 0.000 min
 Response: 102385855
 Conc: 50.59 ng/ml

Instrument :
 ECD_L
 ClientSampleId :
 PB162721BS



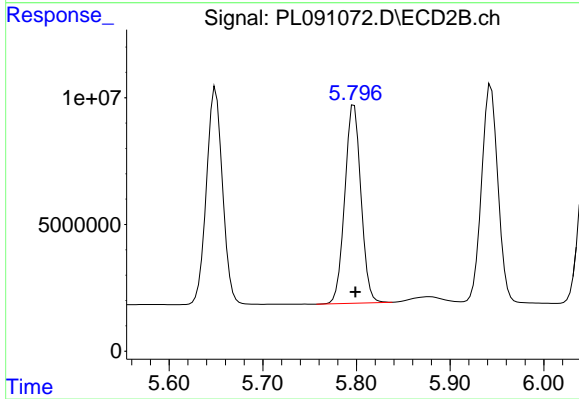
#15 Endosulfan II

R.T.: 5.944 min
 Delta R.T.: -0.002 min
 Response: 103571370
 Conc: 53.53 ng/ml



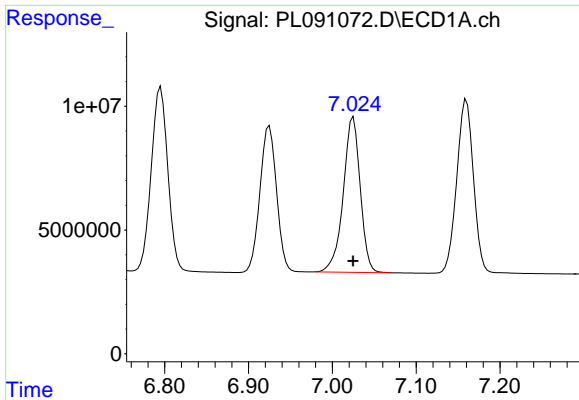
#16 4,4'-DDD

R.T.: 6.711 min
 Delta R.T.: 0.000 min
 Response: 88035613
 Conc: 58.25 ng/ml



#16 4,4'-DDD

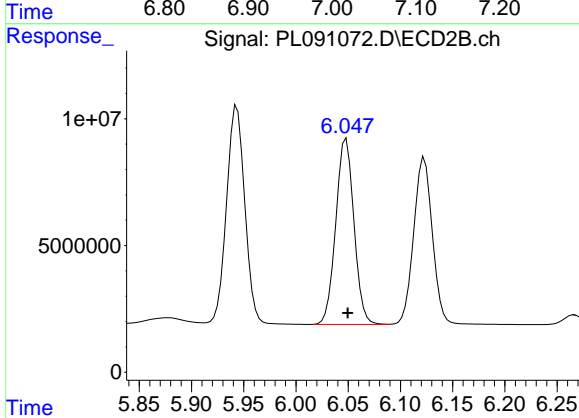
R.T.: 5.798 min
 Delta R.T.: -0.001 min
 Response: 93883681
 Conc: 56.87 ng/ml



#17 4,4'-DDT

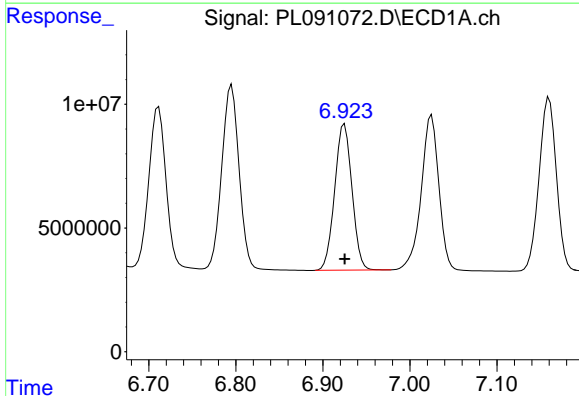
R.T.: 7.025 min
Delta R.T.: 0.000 min
Response: 88486380
Conc: 49.85 ng/ml

Instrument :
ECD_L
ClientSampleId :
PB162721BS



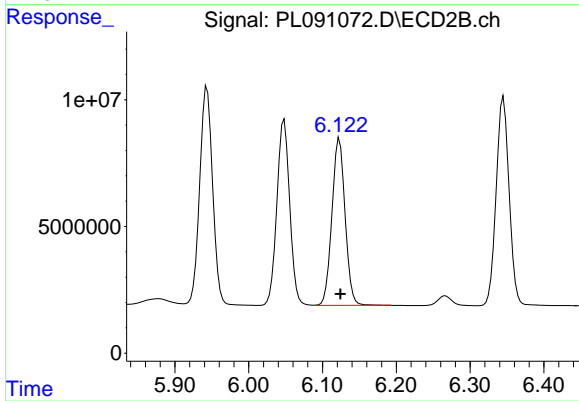
#17 4,4'-DDT

R.T.: 6.048 min
Delta R.T.: -0.001 min
Response: 88613685
Conc: 49.88 ng/ml



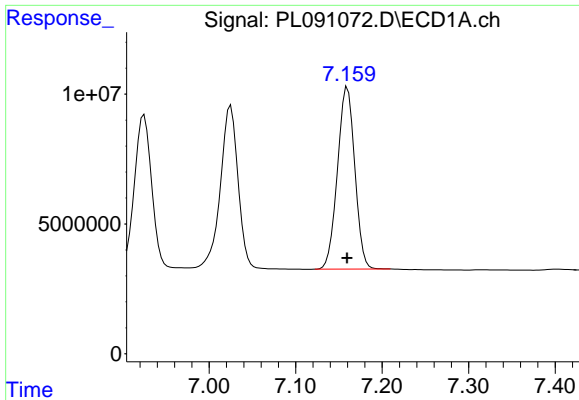
#18 Endrin aldehyde

R.T.: 6.925 min
Delta R.T.: 0.000 min
Response: 81590608
Conc: 51.11 ng/ml



#18 Endrin aldehyde

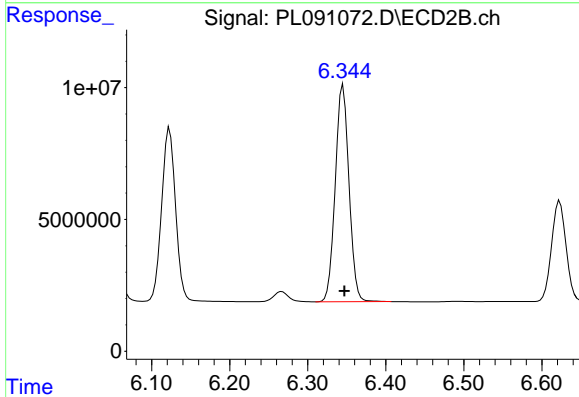
R.T.: 6.123 min
Delta R.T.: -0.002 min
Response: 81754039
Conc: 52.48 ng/ml



#19 Endosulfan Sulfate

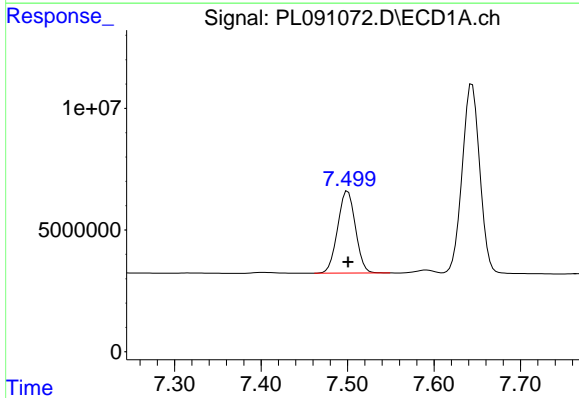
R.T.: 7.160 min
 Delta R.T.: 0.000 min
 Response: 97193999
 Conc: 50.66 ng/ml

Instrument :
 ECD_L
 ClientSampleId :
 PB162721BS



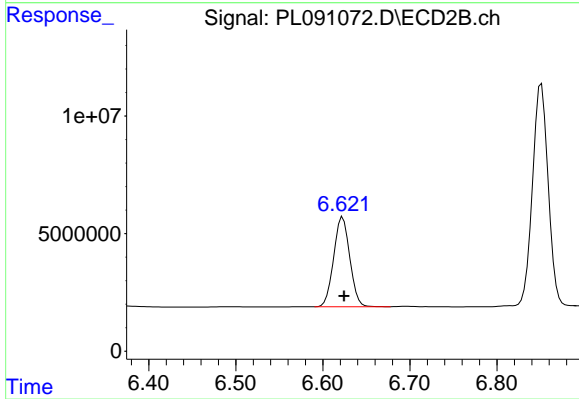
#19 Endosulfan Sulfate

R.T.: 6.345 min
 Delta R.T.: -0.002 min
 Response: 100592900
 Conc: 52.17 ng/ml



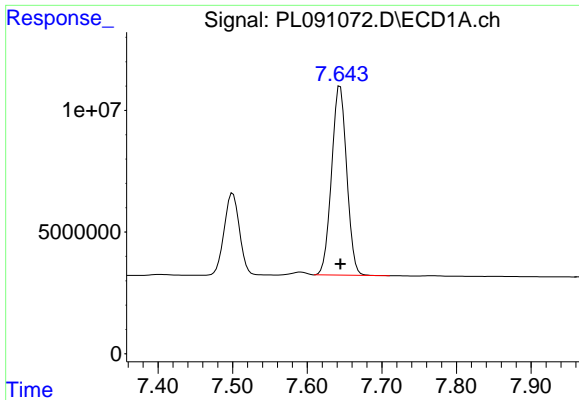
#20 Methoxychlor

R.T.: 7.500 min
 Delta R.T.: 0.000 min
 Response: 47813222
 Conc: 50.85 ng/ml



#20 Methoxychlor

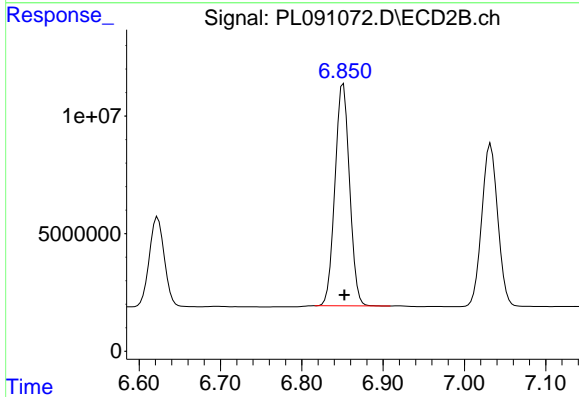
R.T.: 6.623 min
 Delta R.T.: -0.001 min
 Response: 49212555
 Conc: 49.56 ng/ml



#21 Endrin ketone

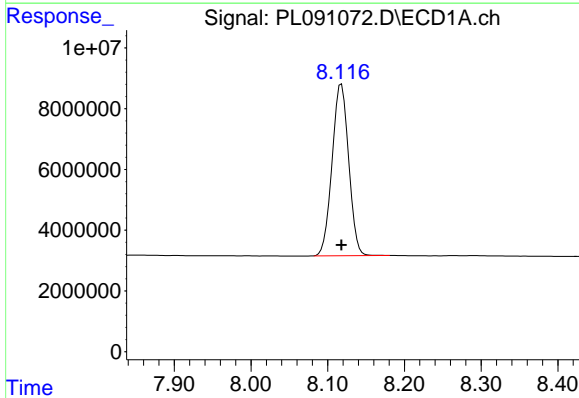
R.T.: 7.644 min
 Delta R.T.: 0.000 min
 Response: 109398543
 Conc: 52.10 ng/ml

Instrument :
 ECD_L
 ClientSampleId :
 PB162721BS



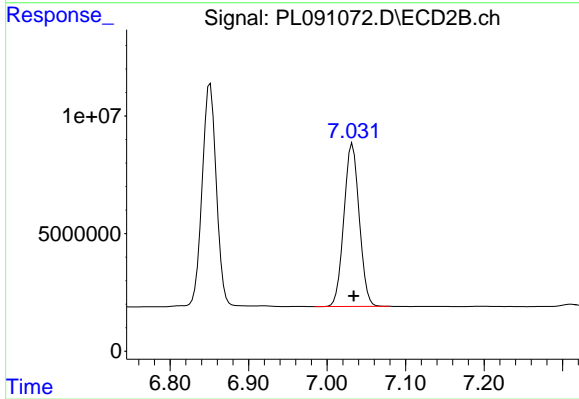
#21 Endrin ketone

R.T.: 6.851 min
 Delta R.T.: -0.001 min
 Response: 117810656
 Conc: 54.09 ng/ml



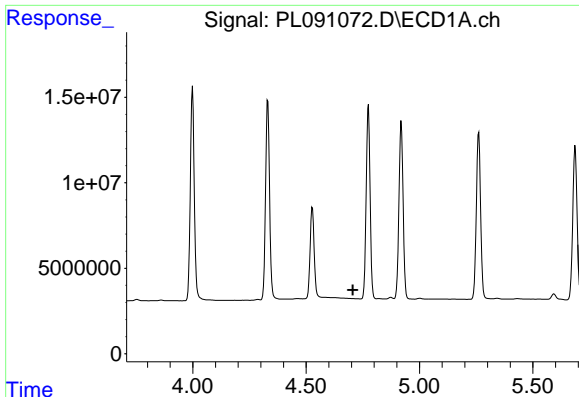
#22 Mirex

R.T.: 8.118 min
 Delta R.T.: 0.000 min
 Response: 84938325
 Conc: 49.93 ng/ml



#22 Mirex

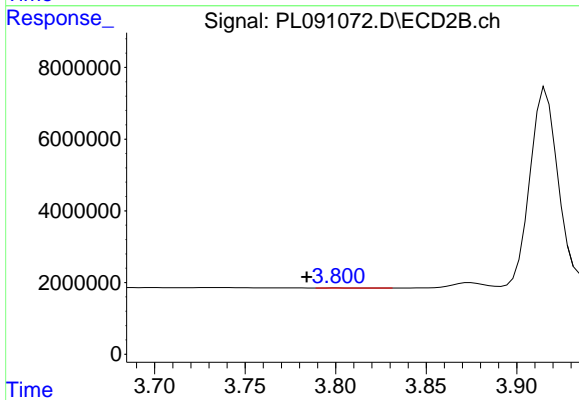
R.T.: 7.032 min
 Delta R.T.: -0.001 min
 Response: 94211059
 Conc: 50.48 ng/ml



#23 Chlordane-1

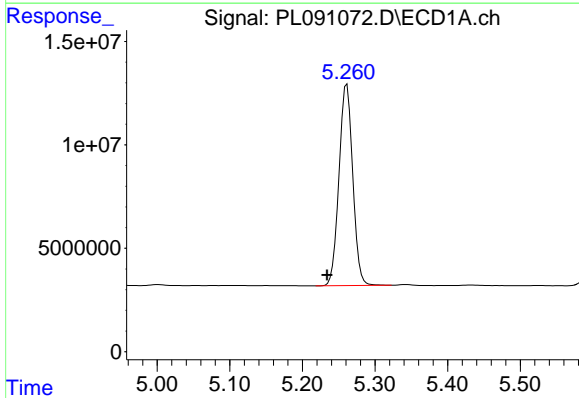
R.T.: 0.000 min
 Exp R.T.: 4.706 min
 Response: 0
 Conc: N.D.

Instrument :
 ECD_L
 ClientSampleId :
 PB162721BS



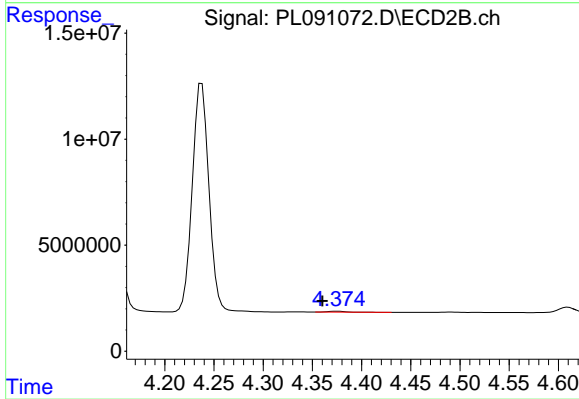
#23 Chlordane-1

R.T.: 3.801 min
 Delta R.T.: 0.017 min
 Response: 23785
 Conc: 0.33 ng/ml



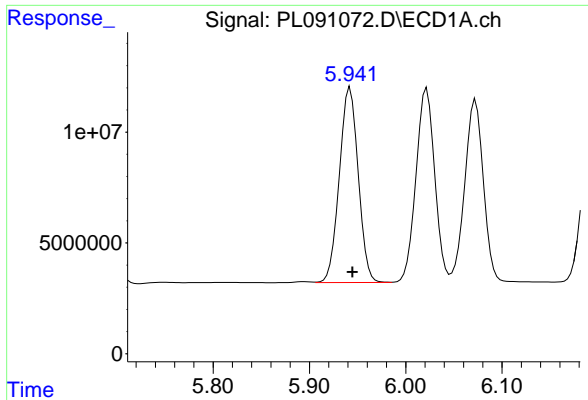
#24 Chlordane-2

R.T.: 5.261 min
 Delta R.T.: 0.027 min
 Response: 128071702
 Conc: 1261.32 ng/ml



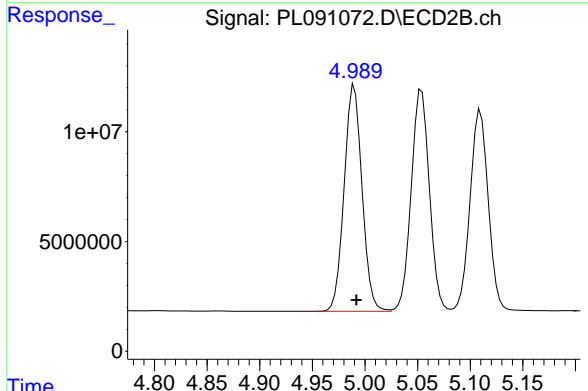
#24 Chlordane-2

R.T.: 4.375 min
 Delta R.T.: 0.015 min
 Response: 572000
 Conc: 6.09 ng/ml

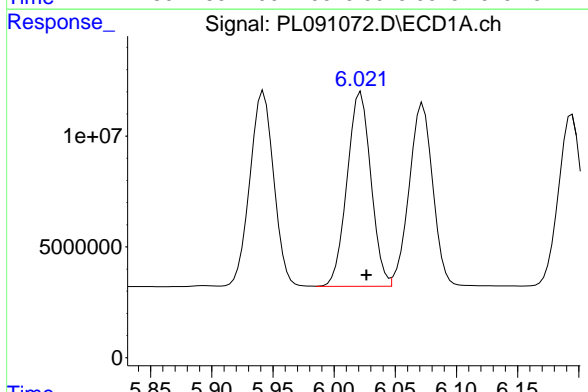


#25 Chlordane-3
 R.T.: 5.942 min
 Delta R.T.: -0.002 min
 Response: 119615284
 Conc: 344.39 ng/ml

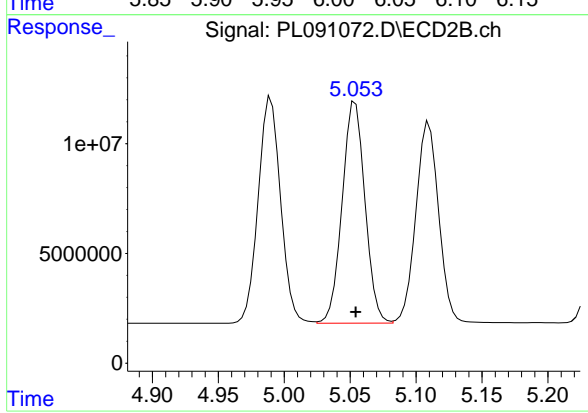
Instrument :
 ECD_L
 ClientSampleId :
 PB162721BS



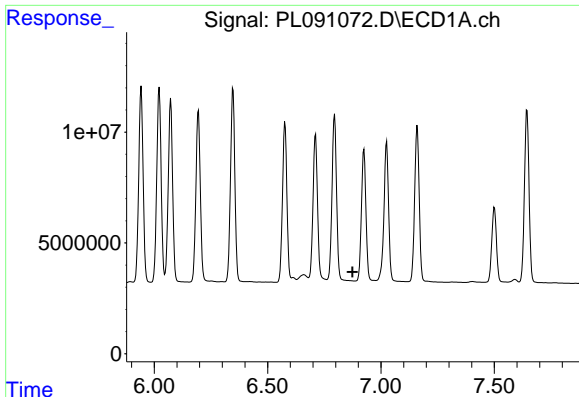
#25 Chlordane-3
 R.T.: 4.990 min
 Delta R.T.: -0.002 min
 Response: 122214924
 Conc: 503.28 ng/ml



#26 Chlordane-4
 R.T.: 6.022 min
 Delta R.T.: -0.005 min
 Response: 118696806
 Conc: 282.20 ng/ml



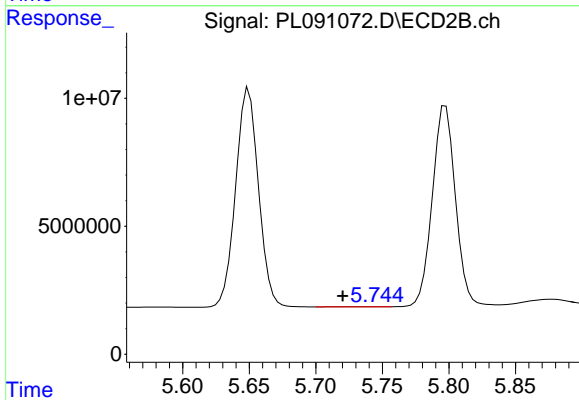
#26 Chlordane-4
 R.T.: 5.054 min
 Delta R.T.: 0.000 min
 Response: 121343592
 Conc: 520.41 ng/ml



#27 Chlordane-5

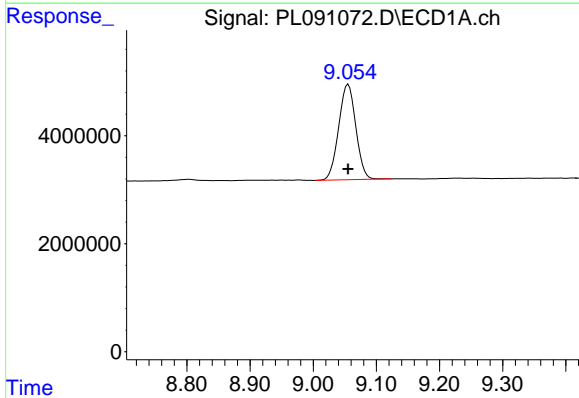
R.T.: 0.000 min
 Exp R.T.: 6.875 min
 Response: 0
 Conc: N.D.

Instrument :
 ECD_L
 ClientSampleId :
 PB162721BS



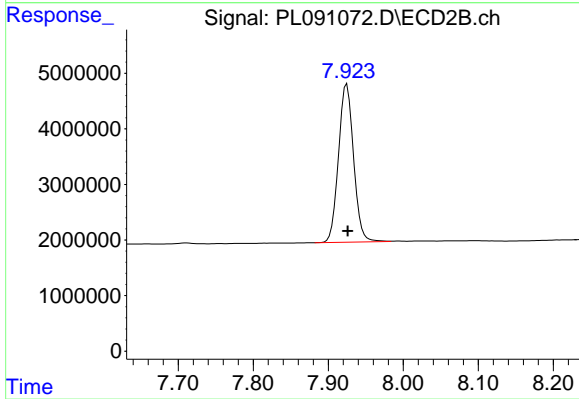
#27 Chlordane-5

R.T.: 5.745 min
 Delta R.T.: 0.025 min
 Response: 106350
 Conc: 1.54 ng/ml



#28 Decachlorobiphenyl

R.T.: 9.056 min
 Delta R.T.: 0.000 min
 Response: 33296996
 Conc: 21.84 ng/ml



#28 Decachlorobiphenyl

R.T.: 7.925 min
 Delta R.T.: -0.001 min
 Response: 39816111
 Conc: 21.02 ng/ml