

Data Path : Z:\pestpcbsrv\HPCHEM1\ECD_L\Data\PL081424\
 Data File : PL091096.D
 Signal(s) : Signal #1: ECD1A.ch Signal #2: ECD2B.ch
 Acq On : 15 Aug 2024 02:57
 Operator : AR\AJ
 Sample : P3519-07
 Misc :
 ALS Vial : 59 Sample Multiplier: 1

Instrument :
 ECD_L
 ClientSampleId :

Integration File signal 1: autoint1.e
 Integration File signal 2: autoint2.e
 Quant Time: Aug 15 04:02:53 2024
 Quant Method : Z:\pestpcbsrv\HPCHEM1\ECD_L\methods\PL081324.M
 Quant Title : GC Extractables
 QLast Update : Wed Aug 14 13:09:19 2024
 Response via : Initial Calibration
 Integrator: ChemStation

Volume Inj. : 1 µl
 Signal #1 Phase : ZB-MR2 Signal #2 Phase: ZB-MR1
 Signal #1 Info : 30M x 0.32mm x0.2 Signal #2 Info : 30M x 0.32mm x0.5µm

Compound	RT#1	RT#2	Resp#1	Resp#2	ng/ml	ng/ml

System Monitoring Compounds						
1) SA Tetrachlo...	3.544	2.785	35160267	29189002	16.375	14.953
28) SA Decachlor...	9.054	7.925	9522150	13308184	6.246	7.026
Target Compounds						
2) A alpha-BHC	4.020f	3.313f	2978167	1642407	0.993	0.592 #
3) MA gamma-BHC...	0.000	3.626	0	2960701	N.D.	1.124 #
4) MA Heptachlor	4.948f	3.957	10095668	1951441	3.791	0.756 #
5) MB Aldrin	5.237f	4.237	3814488	5314309	1.478	2.161 #
7) B delta-BHC	0.000	4.142	0	824554	N.D.	0.325 #
8) B Heptachlo...	5.678	4.741	18956878	183401	7.748	0.081 #
9) A Endosulfan I	0.000	5.140f	0	7259461	N.D.	3.440 #
10) B gamma-Chl...	5.943	4.991	30997804	13128438	12.828	5.554 #
11) B alpha-Chl...	6.025	5.054	27922465	14129204	11.597	6.006 #
12) B 4,4'-DDE	6.194	5.243	6080145	6606871	2.906	3.162
13) MA Dieldrin	6.347	5.378	4803216	6537409	2.039	2.870 #
14) MA Endrin	0.000	5.666	0	2723001	N.D.	1.337 #
15) B Endosulfa...	0.000	5.949	0	2501670	N.D.	1.293 #
16) A 4,4'-DDD	0.000	5.798	0	1310721	N.D.	0.794 #
17) MA 4,4'-DDT	7.025	6.047	1932750	3138446	1.089	1.767 #
18) B Endrin al...	0.000	6.111	0	6314973	N.D.	4.054 #
19) B Endosulfa...	7.187f	6.333	6767302	482896	3.527	0.250 #
22) Mirex	0.000	7.033	0	1013208	N.D.	0.543 #
23) Chlordane-1	4.704	3.784	1082195	4014952	11.235	55.073 #
24) Chlordane-2	5.237	4.363	3814488	9499087	37.567	101.102 #
25) Chlordane-3	5.943	4.991	30997804	13128438	89.247	54.063 #
26) Chlordane-4	6.025	5.054	27922465	14129204	66.385	60.597
27) Chlordane-5	0.000	5.720	0	5122526	N.D.	73.986 #

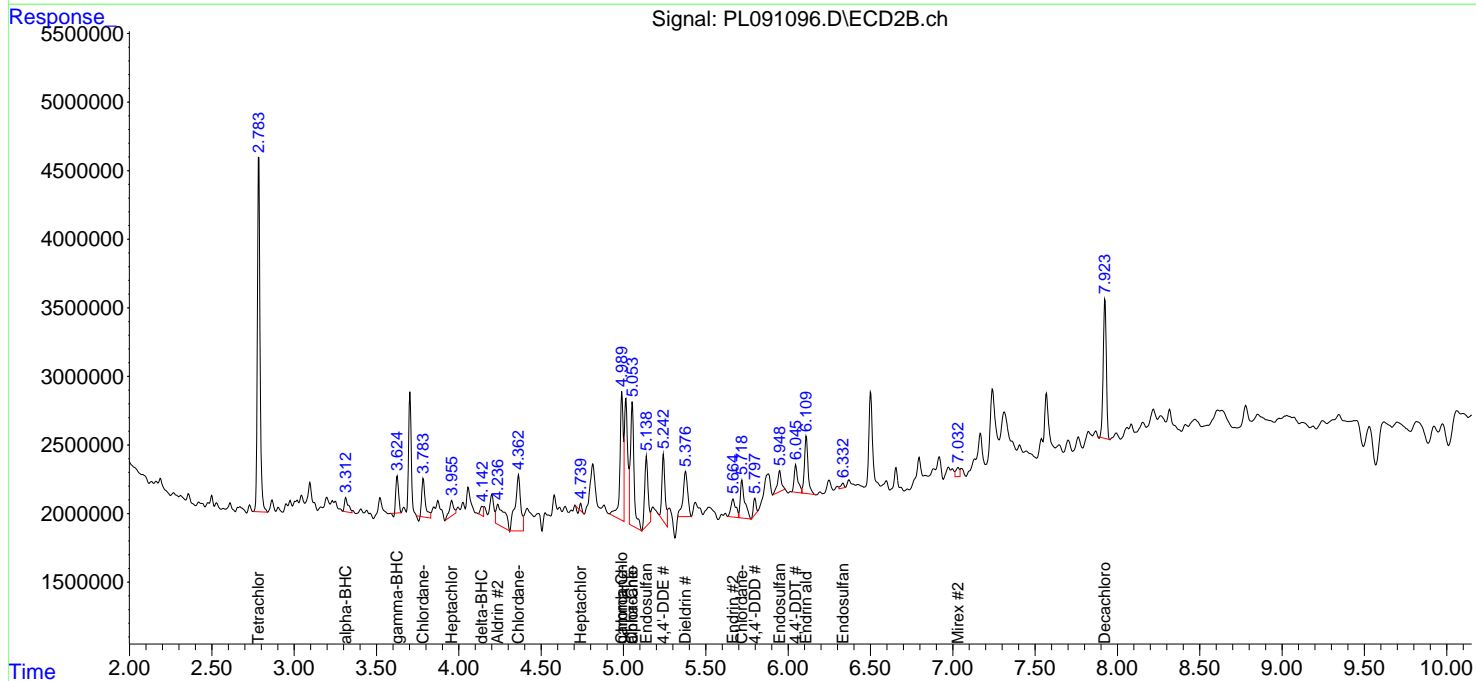
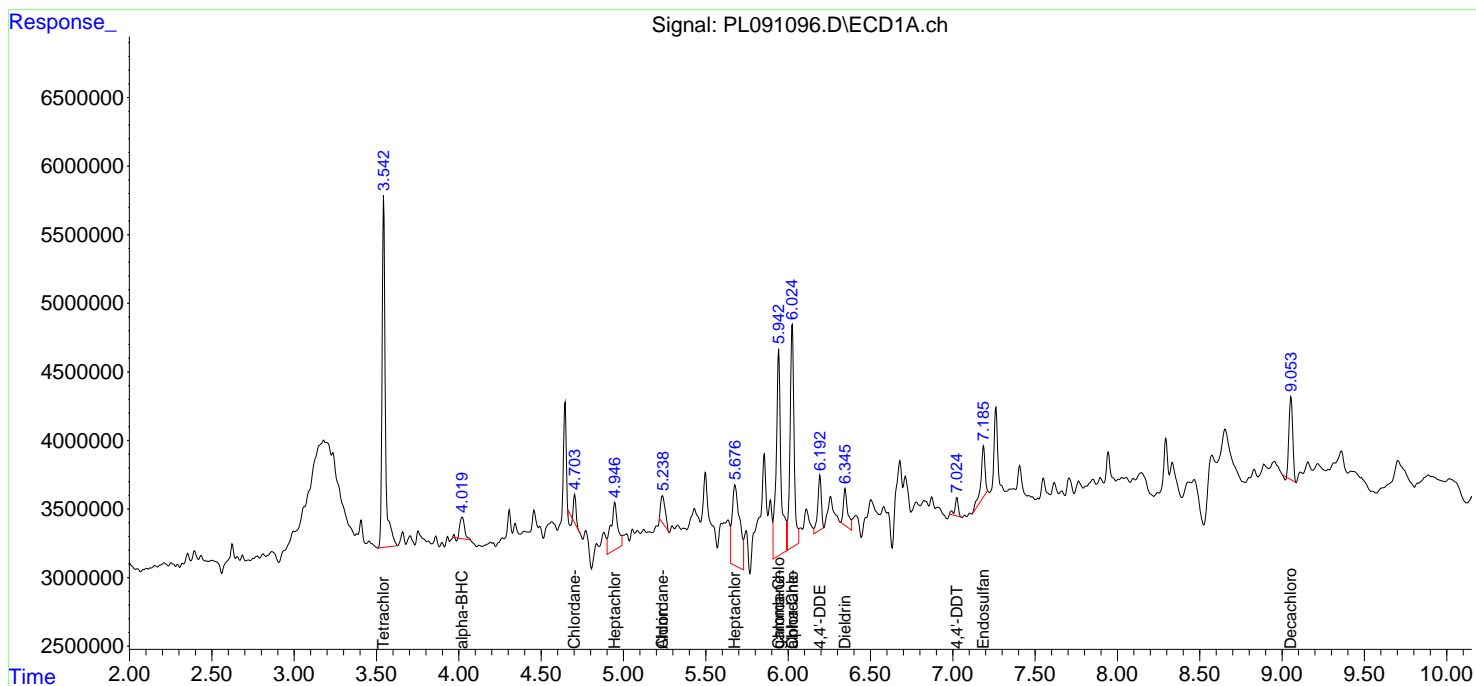
(f)=RT Delta > 1/2 Window (#)=Amounts differ by > 25% (m)=manual int.

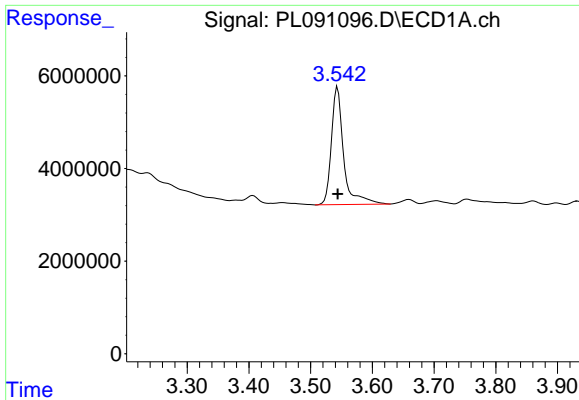
Data Path : Z:\pestpcbsrv\HPCHEM1\ECD_L\Data\PL081424\
 Data File : PL091096.D
 Signal(s) : Signal #1: ECD1A.ch Signal #2: ECD2B.ch
 Acq On : 15 Aug 2024 02:57
 Operator : AR\AJ
 Sample : P3519-07
 Misc :
 ALS Vial : 59 Sample Multiplier: 1

Instrument :
 ECD_L
 ClientSampleId :

Integration File signal 1: autoint1.e
 Integration File signal 2: autoint2.e
 Quant Time: Aug 15 04:02:53 2024
 Quant Method : Z:\pestpcbsrv\HPCHEM1\ECD_L\methods\PL081324.M
 Quant Title : GC Extractables
 QLast Update : Wed Aug 14 13:09:19 2024
 Response via : Initial Calibration
 Integrator: ChemStation

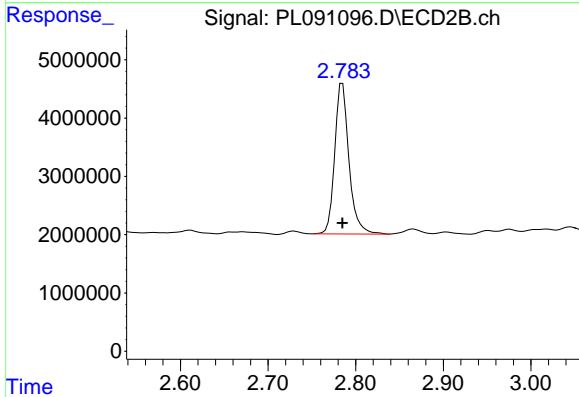
Volume Inj. : 1 µl
 Signal #1 Phase : ZB-MR2 Signal #2 Phase: ZB-MR1
 Signal #1 Info : 30M x 0.32mm x0.2 Signal #2 Info : 30M x 0.32mm x0.5µm



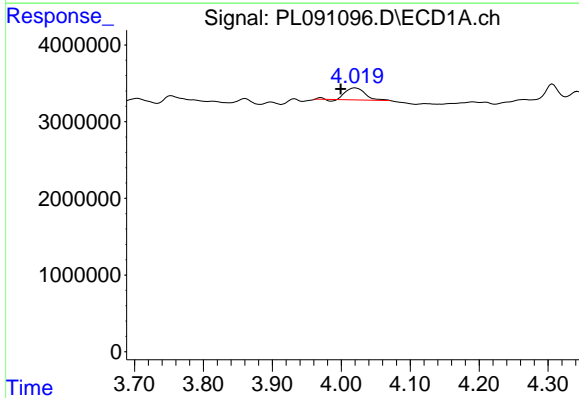


#1 Tetrachloro-m-xylene
 R.T.: 3.544 min
 Delta R.T.: 0.000 min
 Response: 35160267
 Conc: 16.38 ng/ml

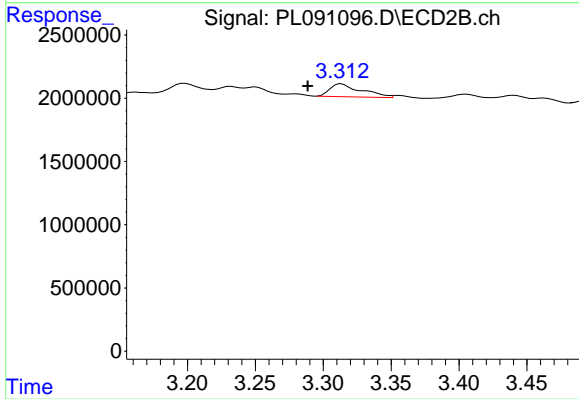
Instrument :
 ECD_L
 ClientSampleId :



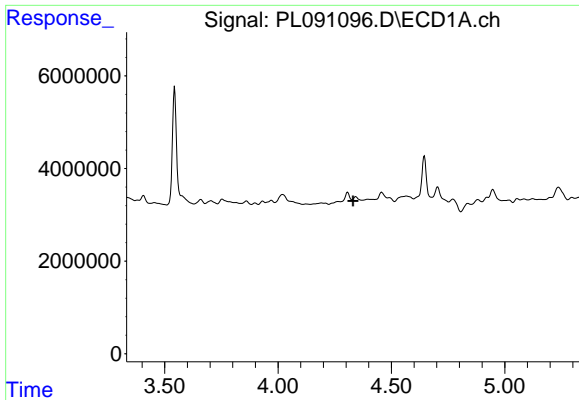
#1 Tetrachloro-m-xylene
 R.T.: 2.785 min
 Delta R.T.: 0.000 min
 Response: 29189002
 Conc: 14.95 ng/ml



#2 alpha-BHC
 R.T.: 4.020 min
 Delta R.T.: 0.021 min
 Response: 2978167
 Conc: 0.99 ng/ml

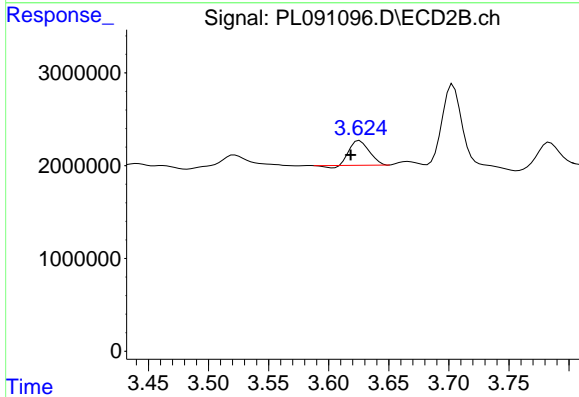


#2 alpha-BHC
 R.T.: 3.313 min
 Delta R.T.: 0.025 min
 Response: 1642407
 Conc: 0.59 ng/ml

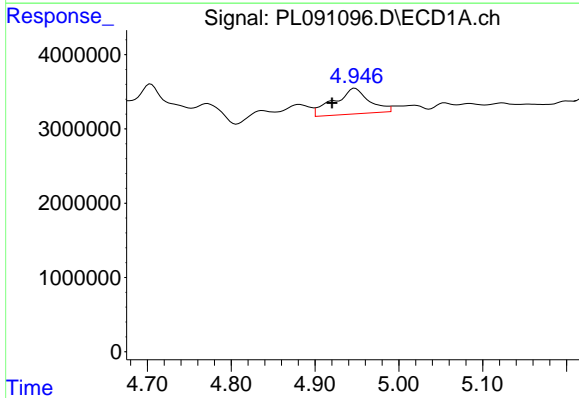


#3 gamma-BHC (Lindane)
 R.T.: 0.000 min
 Exp R.T.: 4.332 min
 Response: 0
 Conc: N.D.

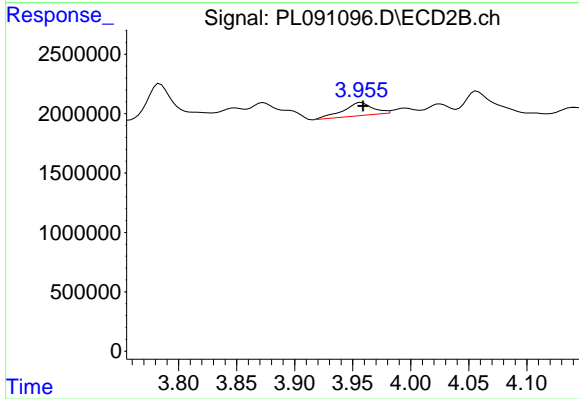
Instrument :
 ECD_L
 ClientSampleId :



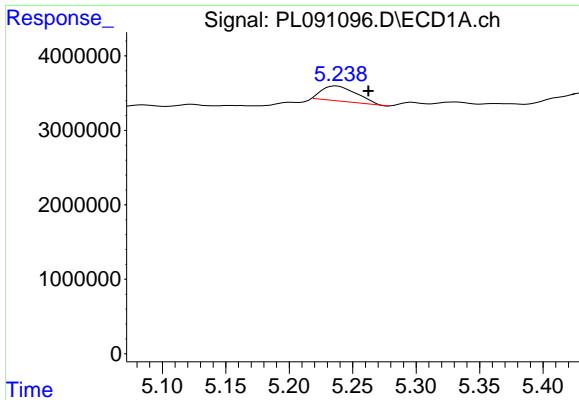
#3 gamma-BHC (Lindane)
 R.T.: 3.626 min
 Delta R.T.: 0.007 min
 Response: 2960701
 Conc: 1.12 ng/ml



#4 Heptachlor
 R.T.: 4.948 min
 Delta R.T.: 0.027 min
 Response: 10095668
 Conc: 3.79 ng/ml

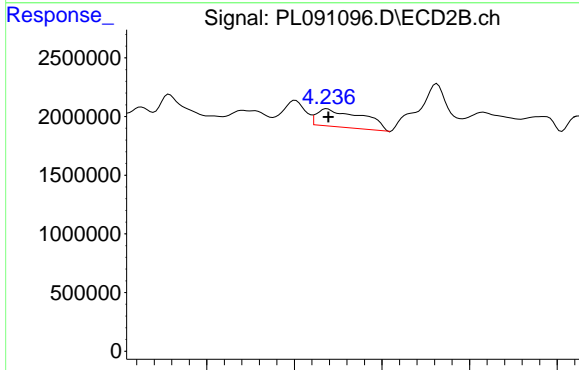


#4 Heptachlor
 R.T.: 3.957 min
 Delta R.T.: -0.001 min
 Response: 1951441
 Conc: 0.76 ng/ml

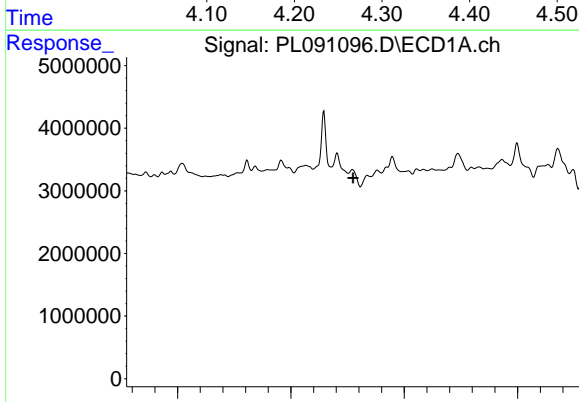


#5 Aldrin
 R.T.: 5.237 min
 Delta R.T.: -0.025 min
 Response: 3814488
 Conc: 1.48 ng/ml

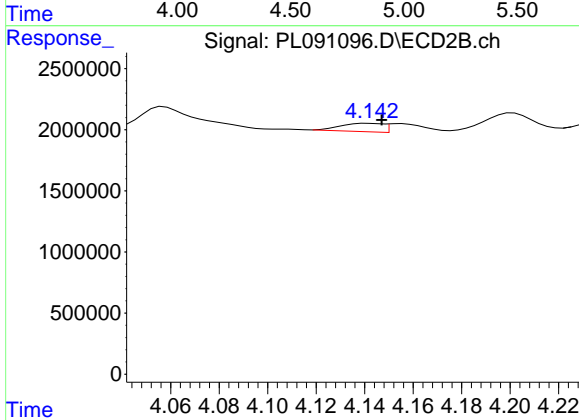
Instrument :
 ECD_L
 ClientSampleId :



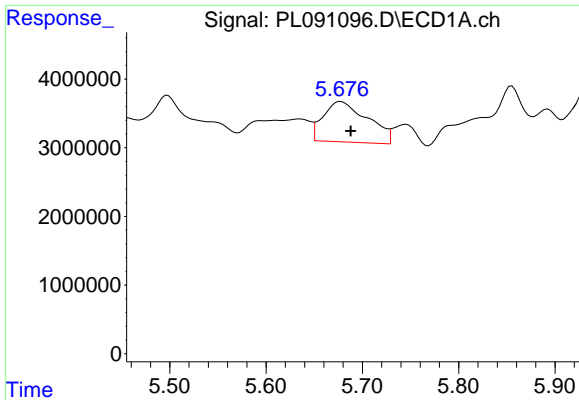
#5 Aldrin
 R.T.: 4.237 min
 Delta R.T.: -0.001 min
 Response: 5314309
 Conc: 2.16 ng/ml



#7 delta-BHC
 R.T.: 0.000 min
 Exp R.T. : 4.775 min
 Response: 0
 Conc: N.D.



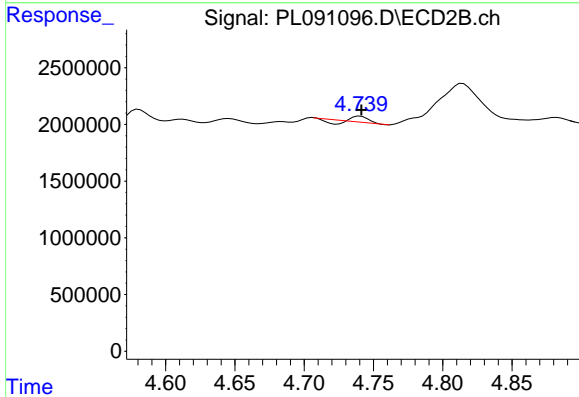
#7 delta-BHC
 R.T.: 4.142 min
 Delta R.T.: -0.006 min
 Response: 824554
 Conc: 0.33 ng/ml



#8 Heptachlor epoxide

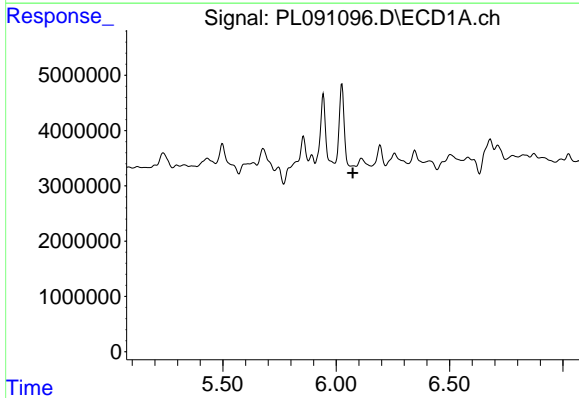
R.T.: 5.678 min
 Delta R.T.: -0.010 min
 Response: 18956878
 Conc: 7.75 ng/ml

Instrument :
 ECD_L
 ClientSampleId :



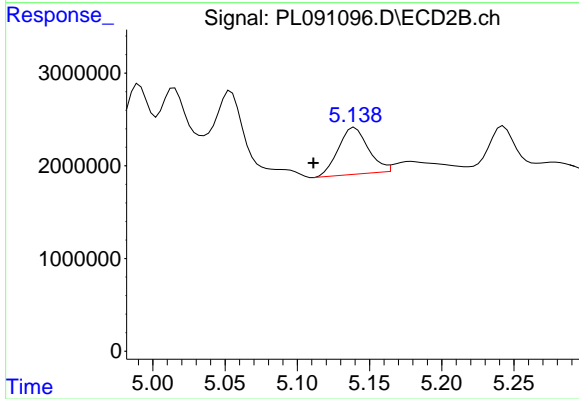
#8 Heptachlor epoxide

R.T.: 4.741 min
 Delta R.T.: 0.000 min
 Response: 183401
 Conc: 0.08 ng/ml



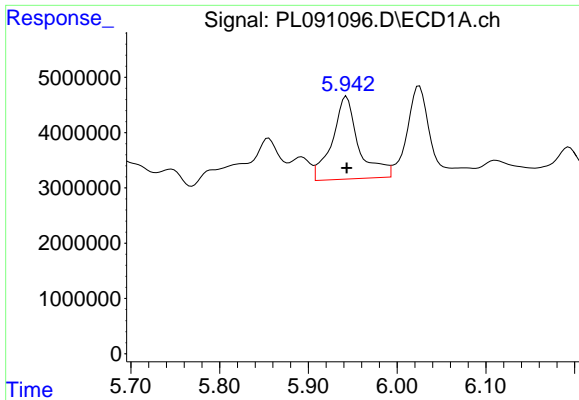
#9 Endosulfan I

R.T.: 0.000 min
 Exp R.T. : 6.073 min
 Response: 0
 Conc: N.D.



#9 Endosulfan I

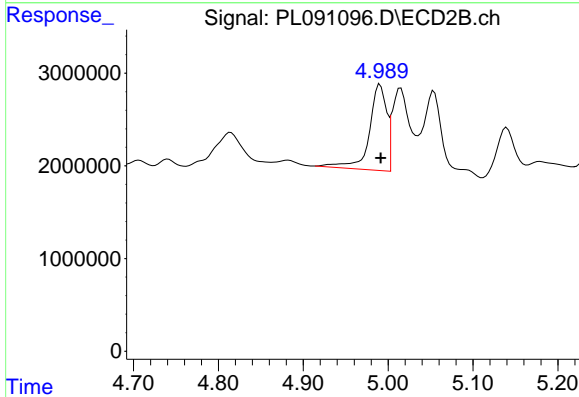
R.T.: 5.140 min
 Delta R.T.: 0.029 min
 Response: 7259461
 Conc: 3.44 ng/ml



#10 gamma-Chlordane

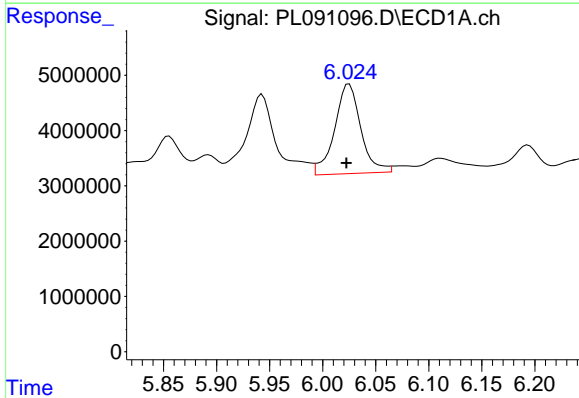
R.T.: 5.943 min
 Delta R.T.: 0.000 min
 Response: 30997804
 Conc: 12.83 ng/ml

Instrument :
 ECD_L
 ClientSampleId :



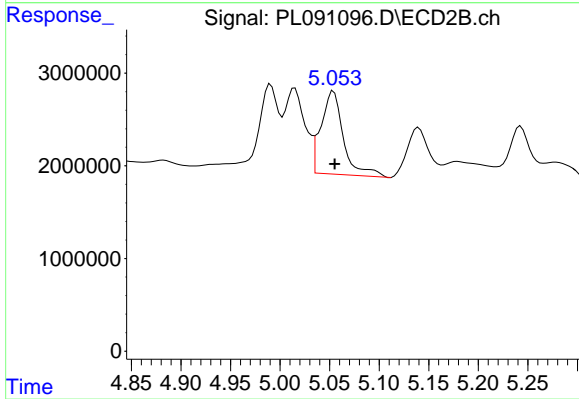
#10 gamma-Chlordane

R.T.: 4.991 min
 Delta R.T.: 0.000 min
 Response: 13128438
 Conc: 5.55 ng/ml



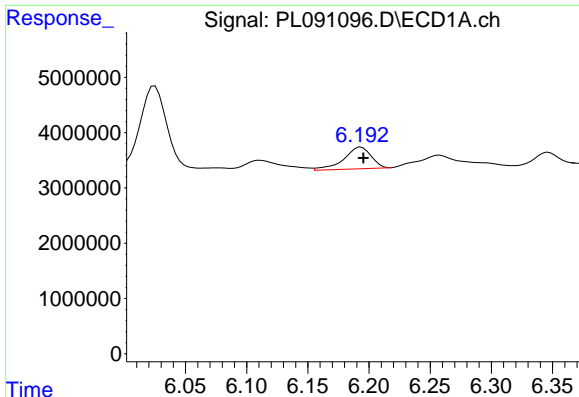
#11 alpha-Chlordane

R.T.: 6.025 min
 Delta R.T.: 0.003 min
 Response: 27922465
 Conc: 11.60 ng/ml



#11 alpha-Chlordane

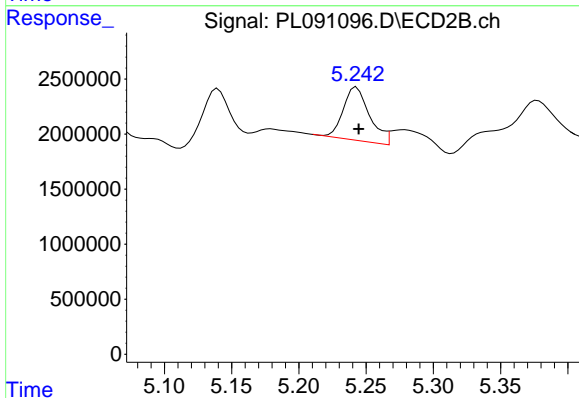
R.T.: 5.054 min
 Delta R.T.: -0.001 min
 Response: 14129204
 Conc: 6.01 ng/ml



#12 4,4'-DDE

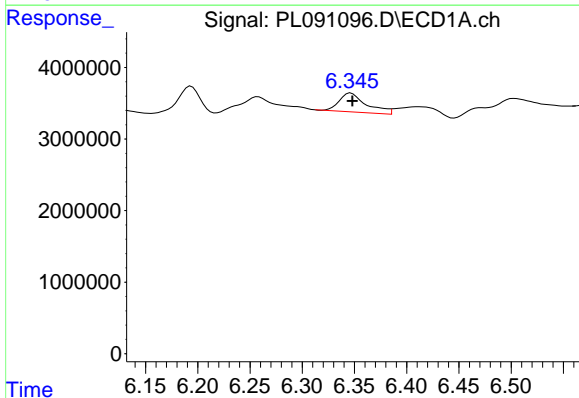
R.T.: 6.194 min
 Delta R.T.: -0.002 min
 Response: 6080145
 Conc: 2.91 ng/ml

Instrument :
 ECD_L
 ClientSampleId :



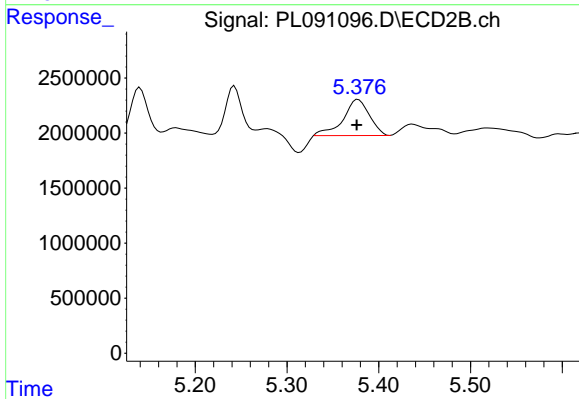
#12 4,4'-DDE

R.T.: 5.243 min
 Delta R.T.: -0.002 min
 Response: 6606871
 Conc: 3.16 ng/ml



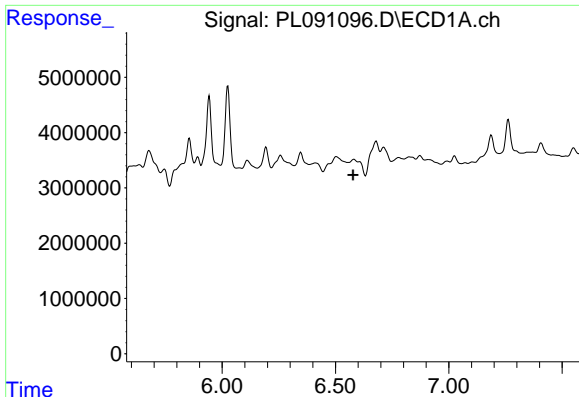
#13 Dieldrin

R.T.: 6.347 min
 Delta R.T.: -0.001 min
 Response: 4803216
 Conc: 2.04 ng/ml



#13 Dieldrin

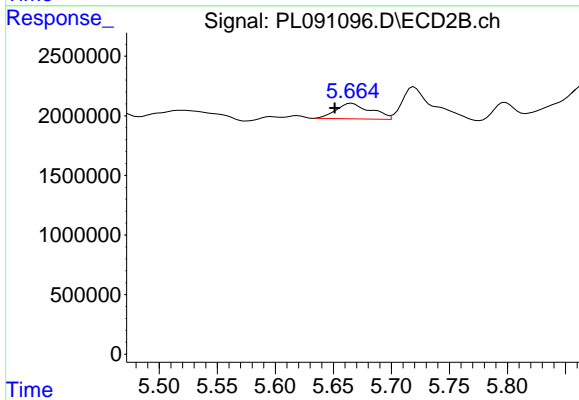
R.T.: 5.378 min
 Delta R.T.: 0.001 min
 Response: 6537409
 Conc: 2.87 ng/ml



#14 Endrin

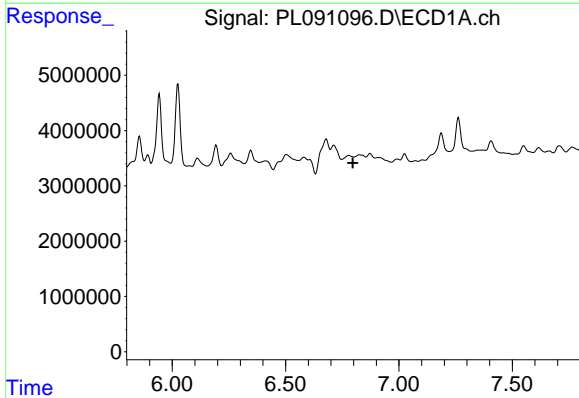
R.T.: 0.000 min
 Exp R.T.: 6.577 min
 Response: 0
 Conc: N.D.

Instrument :
 ECD_L
 ClientSampleId :



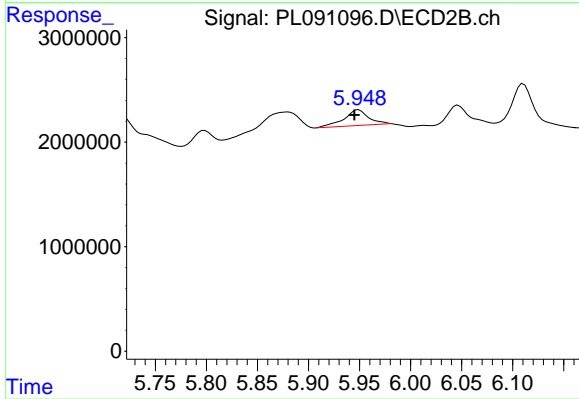
#14 Endrin

R.T.: 5.666 min
 Delta R.T.: 0.015 min
 Response: 2723001
 Conc: 1.34 ng/ml



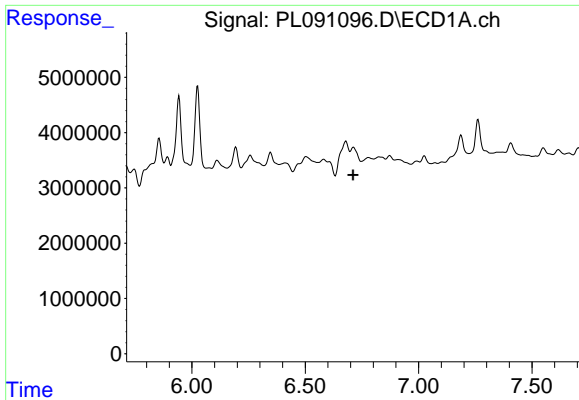
#15 Endosulfan II

R.T.: 0.000 min
 Exp R.T.: 6.796 min
 Response: 0
 Conc: N.D.



#15 Endosulfan II

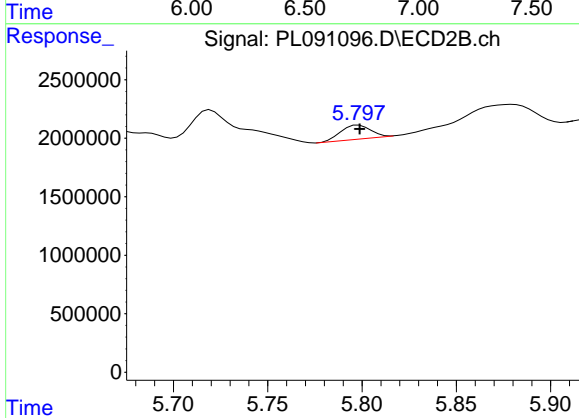
R.T.: 5.949 min
 Delta R.T.: 0.004 min
 Response: 2501670
 Conc: 1.29 ng/ml



#16 4,4'-DDD

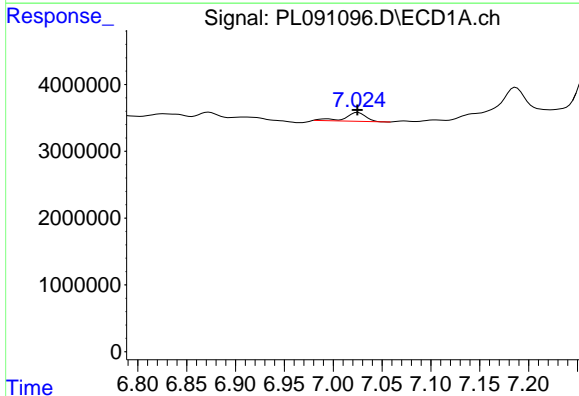
R.T.: 0.000 min
 Exp R.T.: 6.711 min
 Response: 0
 Conc: N.D.

Instrument :
 ECD_L
 ClientSampleId :



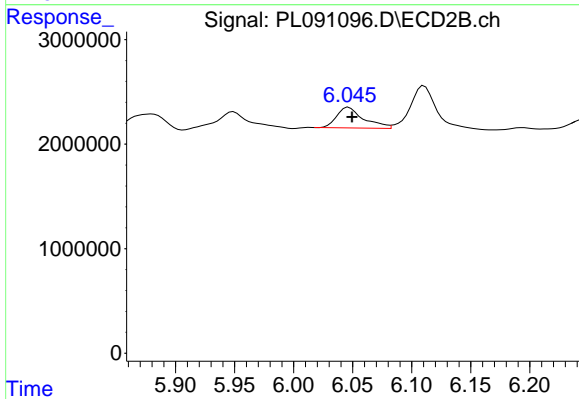
#16 4,4'-DDD

R.T.: 5.798 min
 Delta R.T.: 0.000 min
 Response: 1310721
 Conc: 0.79 ng/ml



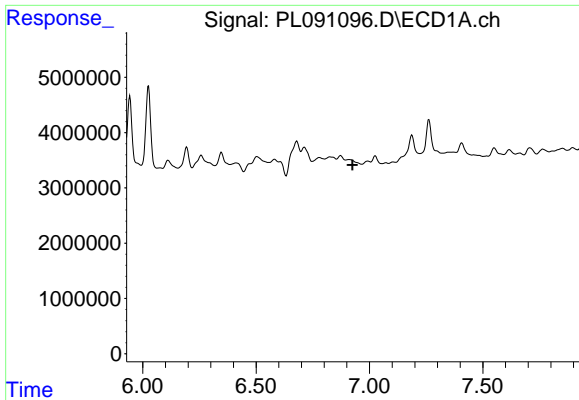
#17 4,4'-DDT

R.T.: 7.025 min
 Delta R.T.: 0.000 min
 Response: 1932750
 Conc: 1.09 ng/ml



#17 4,4'-DDT

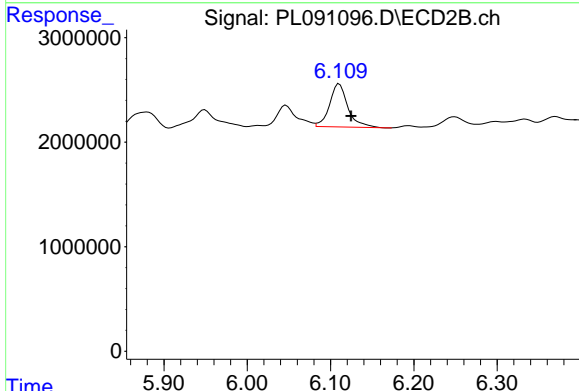
R.T.: 6.047 min
 Delta R.T.: -0.003 min
 Response: 3138446
 Conc: 1.77 ng/ml



#18 Endrin aldehyde

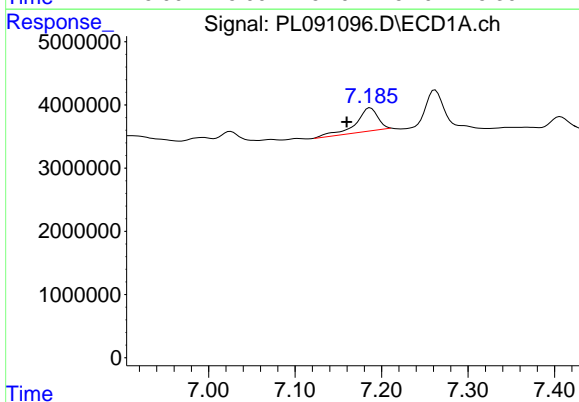
R.T.: 0.000 min
 Exp R.T.: 6.925 min
 Response: 0
 Conc: N.D.

Instrument :
 ECD_L
 ClientSampleId :



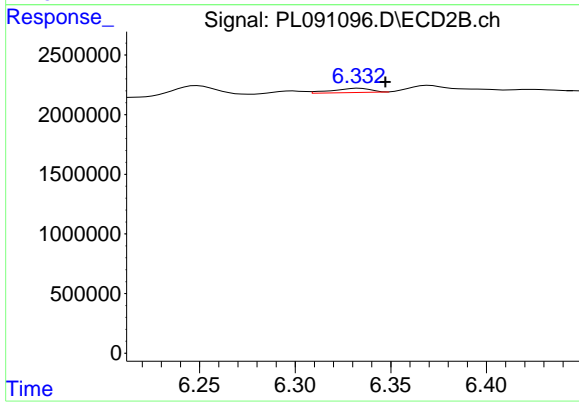
#18 Endrin aldehyde

R.T.: 6.111 min
 Delta R.T.: -0.014 min
 Response: 6314973
 Conc: 4.05 ng/ml



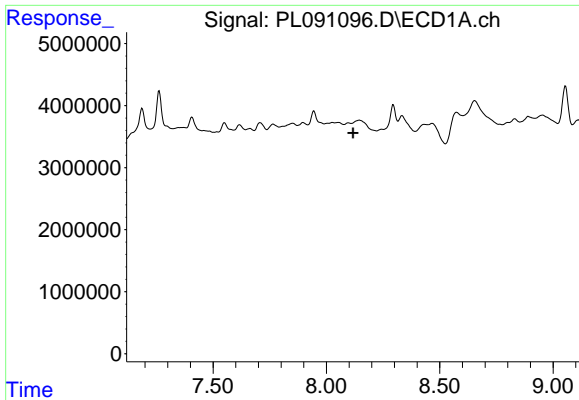
#19 Endosulfan Sulfate

R.T.: 7.187 min
 Delta R.T.: 0.027 min
 Response: 6767302
 Conc: 3.53 ng/ml



#19 Endosulfan Sulfate

R.T.: 6.333 min
 Delta R.T.: -0.014 min
 Response: 482896
 Conc: 0.25 ng/ml

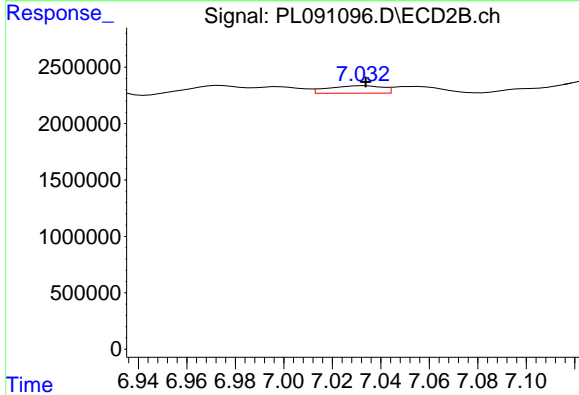


#22 Mirex

R.T.: 0.000 min
 Exp R.T.: 8.118 min
 Response: 0
 Conc: N.D.

Instrument :
 ECD_L
 ClientSampleId :

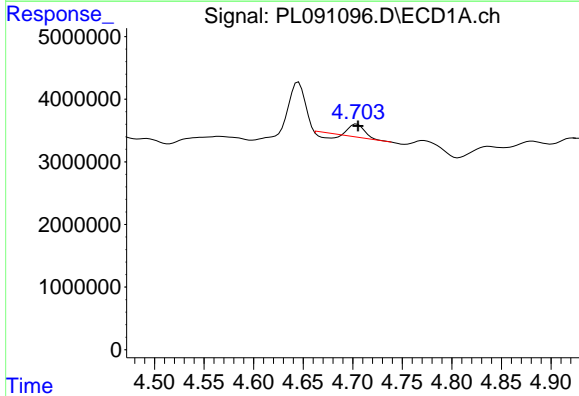
Time 7.50 8.00 8.50 9.00



#22 Mirex

R.T.: 7.033 min
 Delta R.T.: -0.001 min
 Response: 1013208
 Conc: 0.54 ng/ml

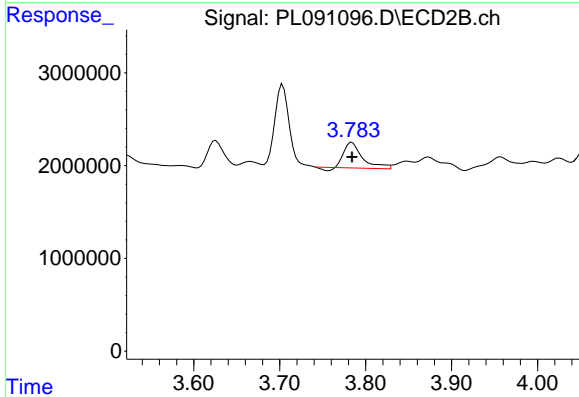
Time 6.94 6.96 6.98 7.00 7.02 7.04 7.06 7.08 7.10



#23 Chlordane-1

R.T.: 4.704 min
 Delta R.T.: -0.001 min
 Response: 1082195
 Conc: 11.24 ng/ml

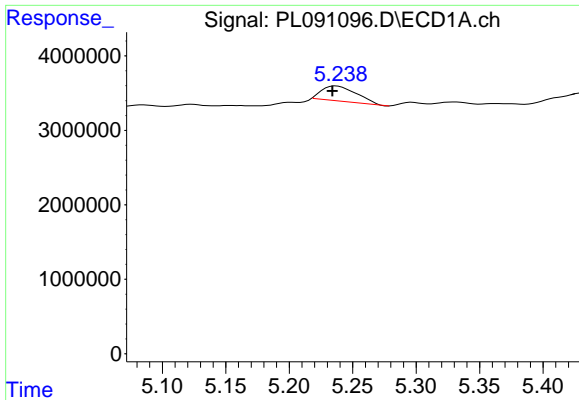
Time 4.50 4.55 4.60 4.65 4.70 4.75 4.80 4.85 4.90



#23 Chlordane-1

R.T.: 3.784 min
 Delta R.T.: 0.000 min
 Response: 4014952
 Conc: 55.07 ng/ml

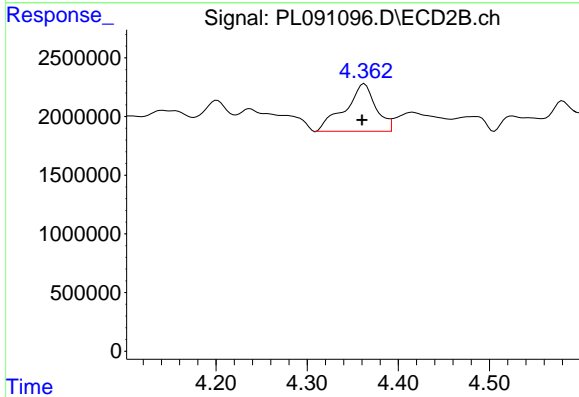
Time 3.60 3.70 3.80 3.90 4.00



#24 Chlordane-2

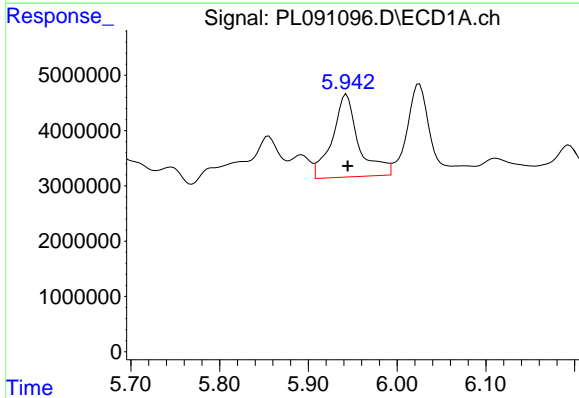
R.T.: 5.237 min
 Delta R.T.: 0.003 min
 Response: 3814488
 Conc: 37.57 ng/ml

Instrument :
 ECD_L
 ClientSampleId :



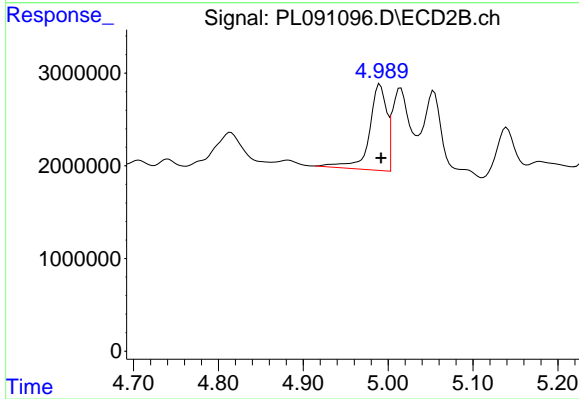
#24 Chlordane-2

R.T.: 4.363 min
 Delta R.T.: 0.003 min
 Response: 9499087
 Conc: 101.10 ng/ml



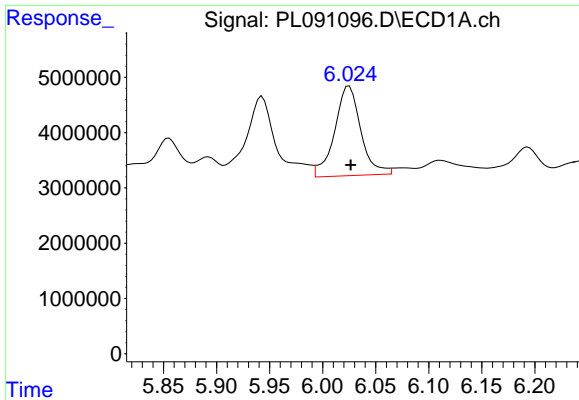
#25 Chlordane-3

R.T.: 5.943 min
 Delta R.T.: -0.002 min
 Response: 30997804
 Conc: 89.25 ng/ml



#25 Chlordane-3

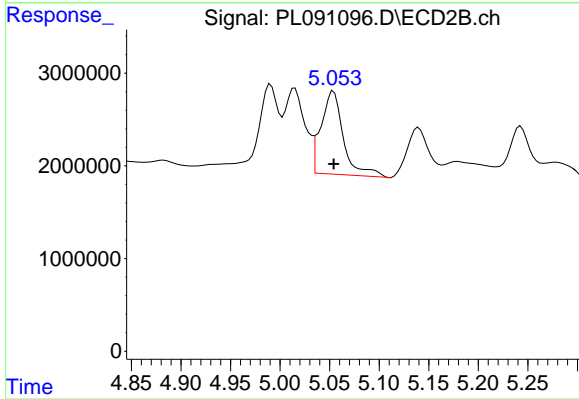
R.T.: 4.991 min
 Delta R.T.: -0.001 min
 Response: 13128438
 Conc: 54.06 ng/ml



#26 Chlordane-4

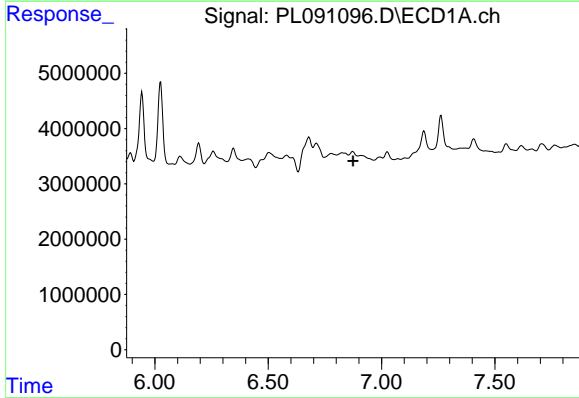
R.T.: 6.025 min
 Delta R.T.: -0.001 min
 Response: 27922465
 Conc: 66.39 ng/ml

Instrument :
 ECD_L
 ClientSampleId :



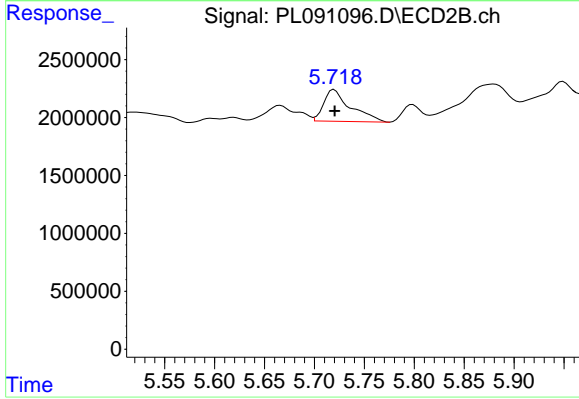
#26 Chlordane-4

R.T.: 5.054 min
 Delta R.T.: 0.000 min
 Response: 14129204
 Conc: 60.60 ng/ml



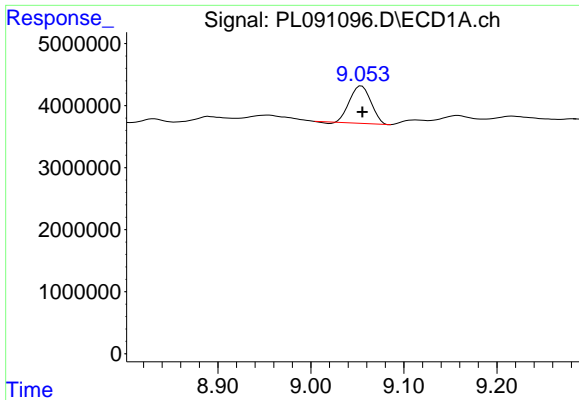
#27 Chlordane-5

R.T.: 0.000 min
 Exp R.T. : 6.875 min
 Response: 0
 Conc: N.D.



#27 Chlordane-5

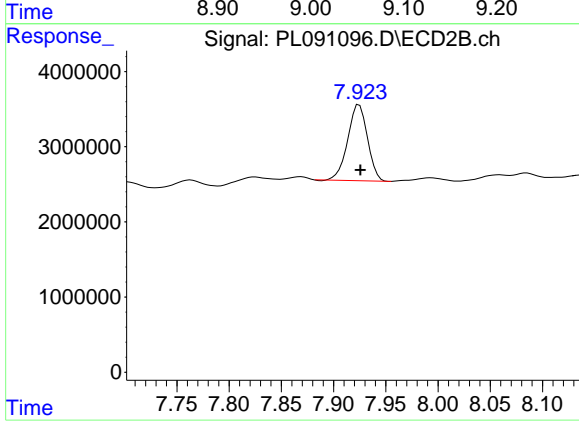
R.T.: 5.720 min
 Delta R.T.: 0.000 min
 Response: 5122526
 Conc: 73.99 ng/ml



#28 Decachlorobiphenyl

R.T.: 9.054 min
Delta R.T.: 0.000 min
Response: 9522150
Conc: 6.25 ng/ml

Instrument :
ECD_L
ClientSampleId :



#28 Decachlorobiphenyl

R.T.: 7.925 min
Delta R.T.: -0.001 min
Response: 13308184
Conc: 7.03 ng/ml