

Data Path : Z:\pestpcbsrv\HPCHEM1\ECD_L\Data\PL081518\
 Data File : PL039193.D
 Signal(s) : Signal #1: ECD1A.ch Signal #2: ECD2B.ch
 Acq On : 16 Aug 2018 08:58
 Operator : AJ\SJ
 Sample : J3822-01
 Misc :
 ALS Vial : 13 Sample Multiplier: 1

Instrument :
 ECD_L
 ClientSampleId :

Integration File signal 1: autoint1.e
 Integration File signal 2: autoint2.e
 Quant Time: Aug 16 09:53:29 2018
 Quant Method : Z:\pestpcbsrv\HPCHEM1\ECD_L\methods\PL081318.M
 Quant Title : GC Extractables
 QLast Update : Wed Aug 15 15:04:22 2018
 Response via : Initial Calibration
 Integrator: ChemStation

Volume Inj. : 2 µl
 Signal #1 Phase : ZB-MR1 Signal #2 Phase: ZB-MR2
 Signal #1 Info : 30M x 0.32mm x0.5 Signal #2 Info : 30M x 0.32mm x0.25µm

Compound	RT#1	RT#2	Resp#1	Resp#2	ng/ml	ng/ml

System Monitoring Compounds						
1) SA Tetrachlo...	3.305	3.907	153.6E6	59717628	21.974	22.275
28) SA Decachlor...	7.962	8.894	154.8E6	57360361	22.037	24.718
Target Compounds						
2) A alpha-BHC	3.747	0.000	12019075	0	1.017	N.D. #
4) MA Heptachlor	4.308	0.000	8306002	0	0.789	N.D. #
6) B beta-BHC	4.223f	0.000	6771435	0	1.458	N.D. #
8) B Heptachlo...	0.000	5.773	0	9067908	N.D.	2.696 #
10) B gamma-Chl...	5.135f	0.000	1455728	0	0.147	N.D. #
23) Chlordane-1	4.153	0.000	9468263	0	29.907	N.D. #
24) Chlordane-2	4.586	0.000	7874145	0	22.524	N.D. #
25) Chlordane-3	5.135	0.000	1455728	0	1.333	N.D. #

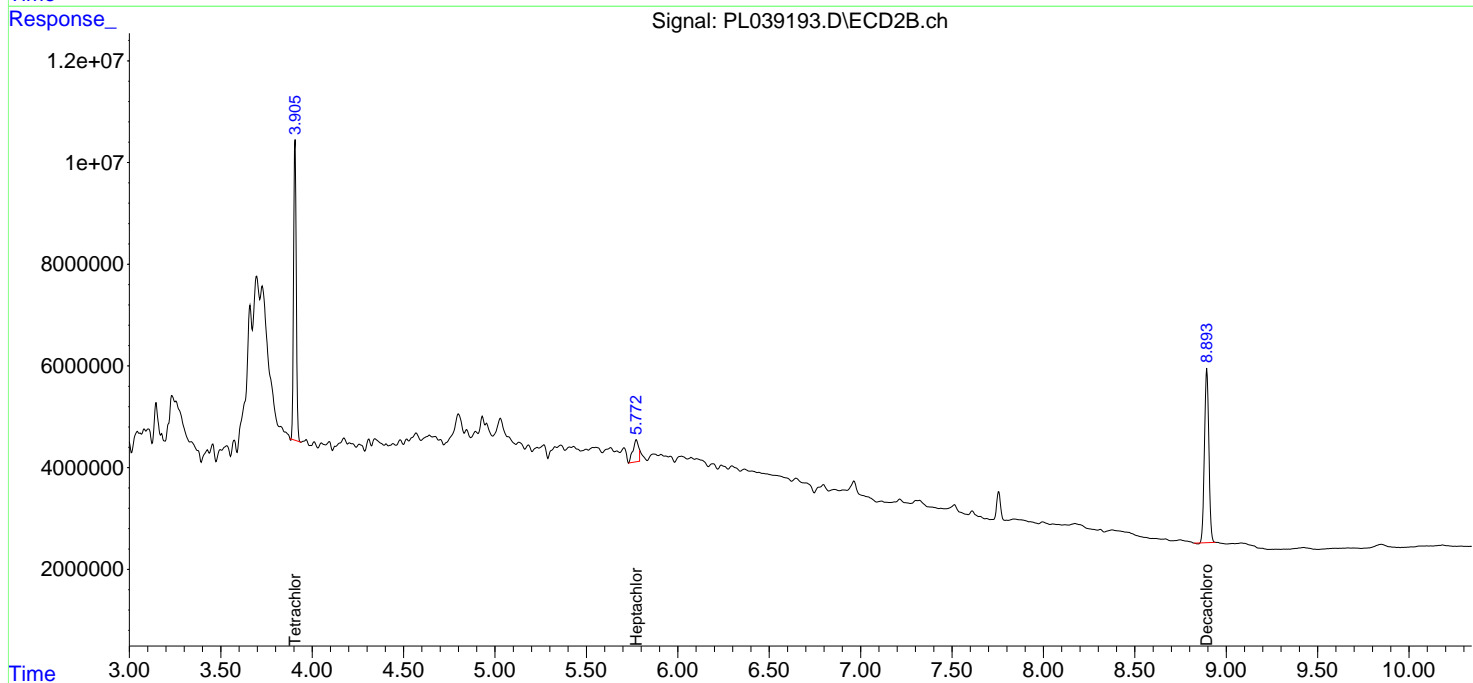
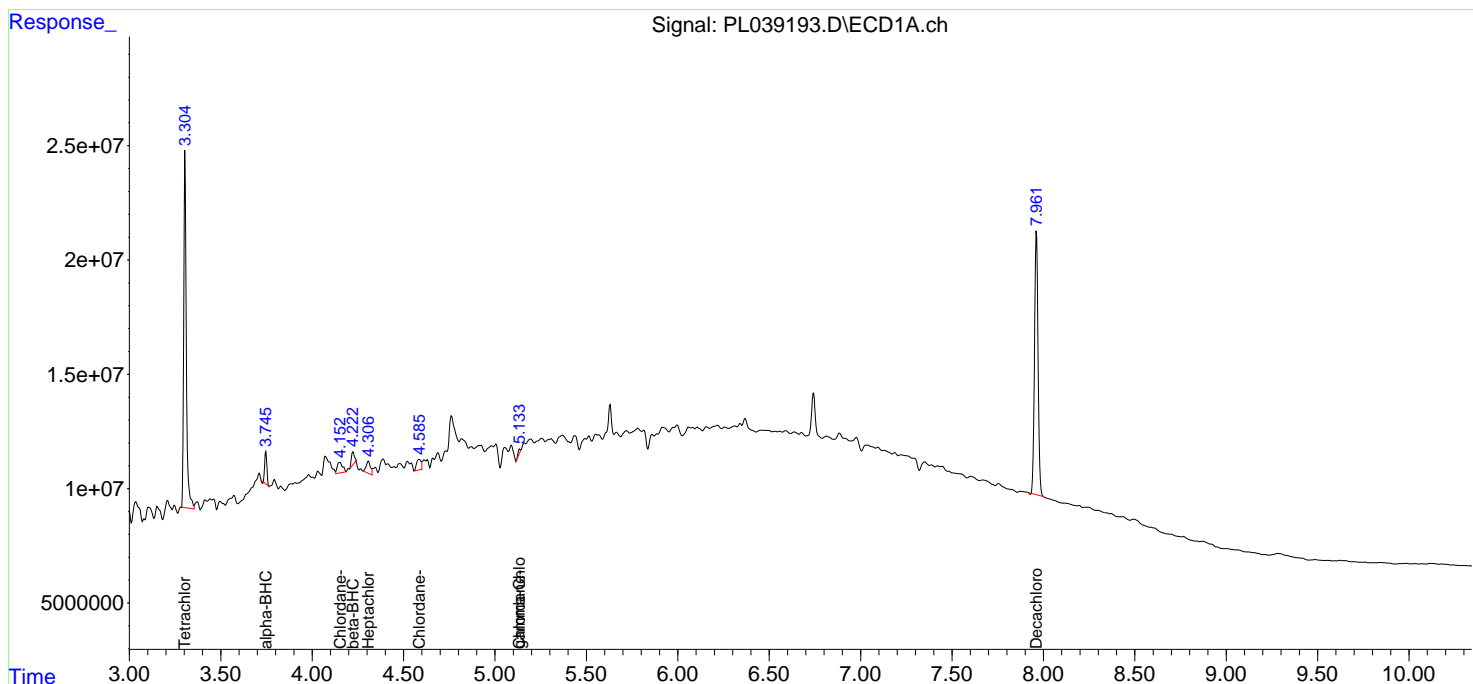
(f)=RT Delta > 1/2 Window (#)=Amounts differ by > 25% (m)=manual int.

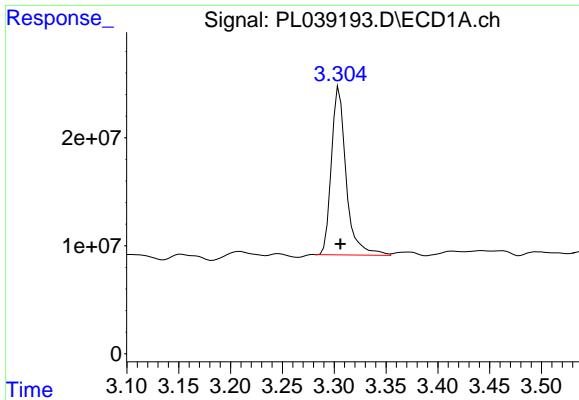
Data Path : Z:\pestpcbsrv\HPCHEM1\ECD_L\Data\PL081518\
 Data File : PL039193.D
 Signal(s) : Signal #1: ECD1A.ch Signal #2: ECD2B.ch
 Acq On : 16 Aug 2018 08:58
 Operator : AJ\SJ
 Sample : J3822-01
 Misc :
 ALS Vial : 13 Sample Multiplier: 1

Instrument :
 ECD_L
 ClientSampled :

Integration File signal 1: autoint1.e
 Integration File signal 2: autoint2.e
 Quant Time: Aug 16 09:53:29 2018
 Quant Method : Z:\pestpcbsrv\HPCHEM1\ECD_L\methods\PL081318.M
 Quant Title : GC Extractables
 QLast Update : Wed Aug 15 15:04:22 2018
 Response via : Initial Calibration
 Integrator: ChemStation

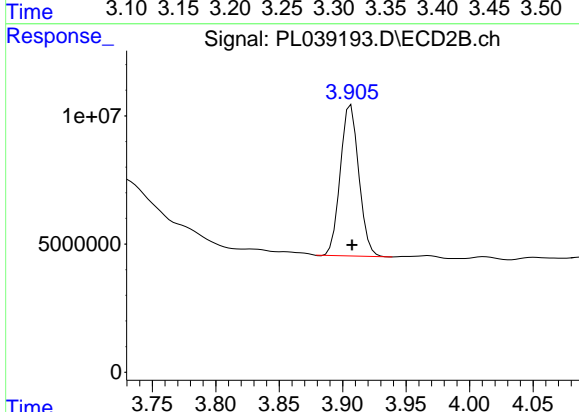
Volume Inj. : 2 µl
 Signal #1 Phase : ZB-MR1 Signal #2 Phase: ZB-MR2
 Signal #1 Info : 30M x 0.32mm x0.5 Signal #2 Info : 30M x 0.32mm x0.25µm



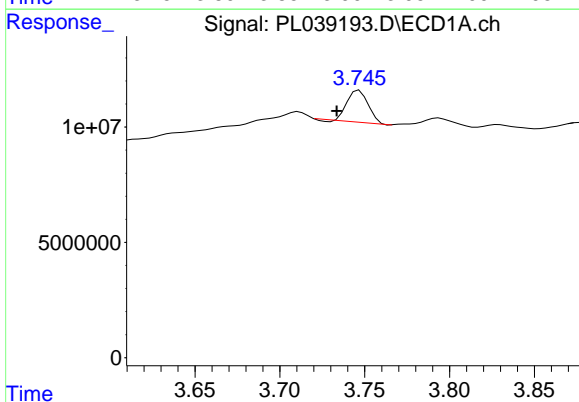


#1 Tetrachloro-m-xylene
 R.T.: 3.305 min
 Delta R.T.: -0.001 min
 Response: 153604378
 Conc: 21.97 ng/ml

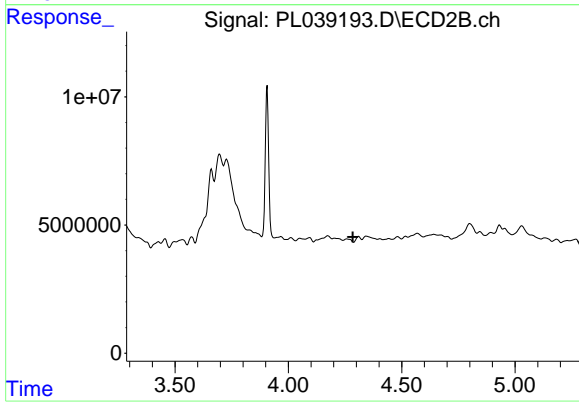
Instrument :
 ECD_L
 ClientSampleId :



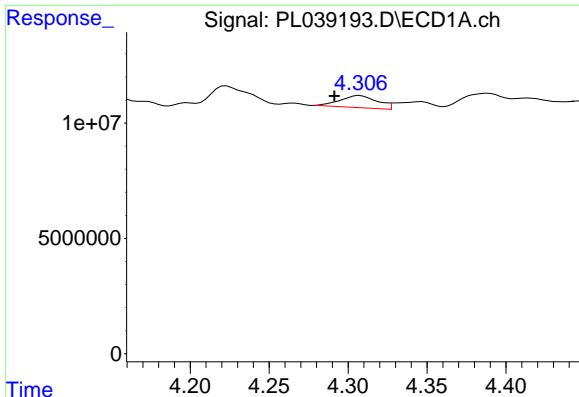
#1 Tetrachloro-m-xylene
 R.T.: 3.907 min
 Delta R.T.: 0.000 min
 Response: 59717628
 Conc: 22.28 ng/ml



#2 alpha-BHC
 R.T.: 3.747 min
 Delta R.T.: 0.013 min
 Response: 12019075
 Conc: 1.02 ng/ml



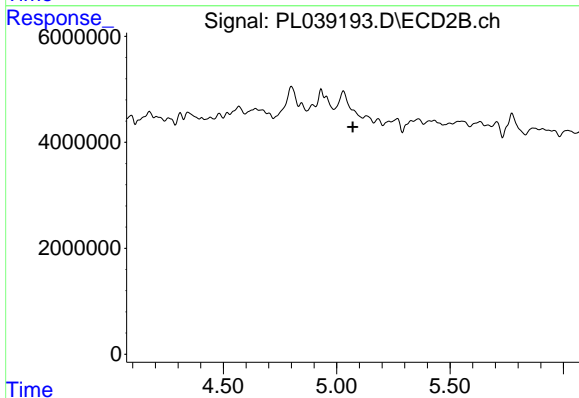
#2 alpha-BHC
 R.T.: 0.000 min
 Exp R.T. : 4.285 min
 Response: 0
 Conc: N.D.



#4 Heptachlor

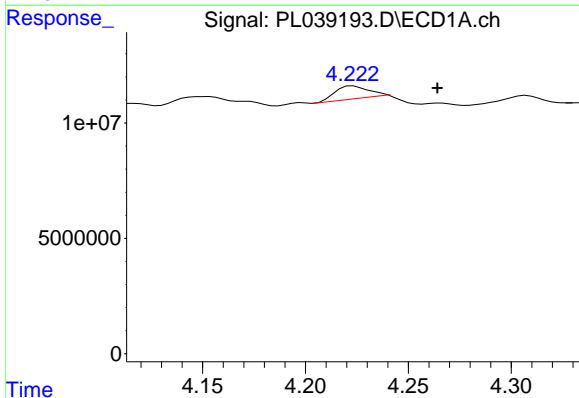
R.T.: 4.308 min
 Delta R.T.: 0.016 min
 Response: 8306002
 Conc: 0.79 ng/ml

Instrument :
 ECD_L
 ClientSampleId :



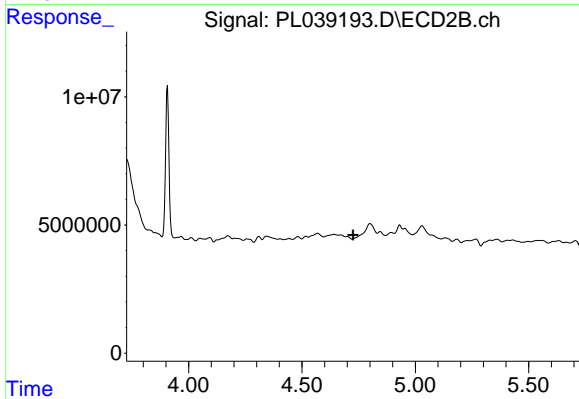
#4 Heptachlor

R.T.: 0.000 min
 Exp R.T. : 5.071 min
 Response: 0
 Conc: N.D.



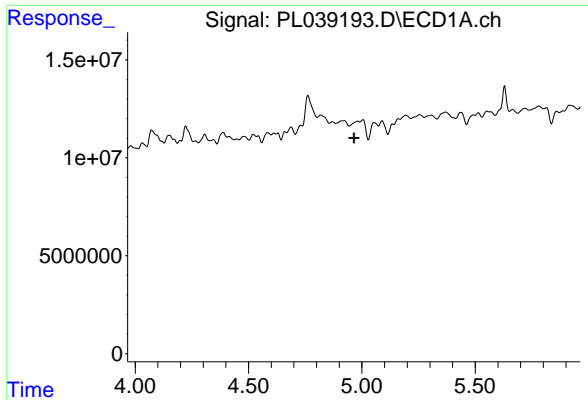
#6 beta-BHC

R.T.: 4.223 min
 Delta R.T.: -0.041 min
 Response: 6771435
 Conc: 1.46 ng/ml



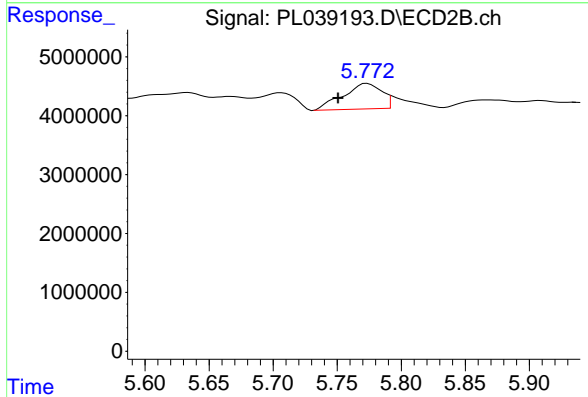
#6 beta-BHC

R.T.: 0.000 min
 Exp R.T. : 4.726 min
 Response: 0
 Conc: N.D.

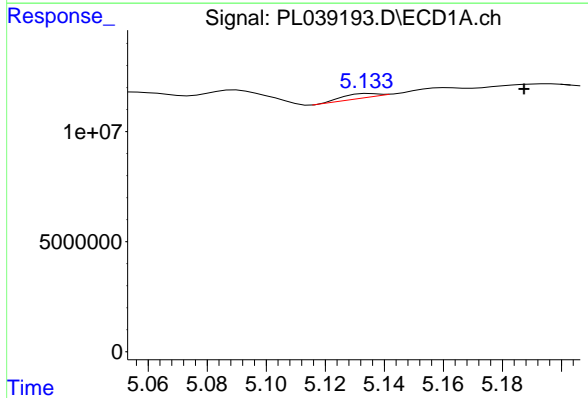


#8 Heptachlor epoxide
 R.T.: 0.000 min
 Exp R.T.: 4.966 min
 Response: 0
 Conc: N.D.

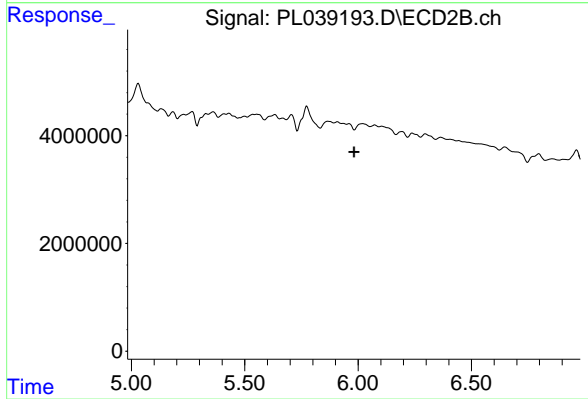
Instrument :
 ECD_L
 ClientSampleId :



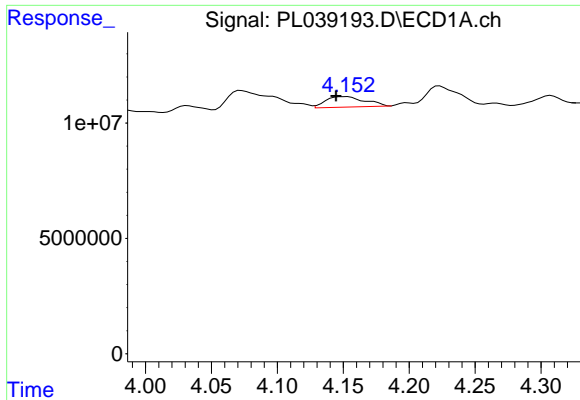
#8 Heptachlor epoxide
 R.T.: 5.773 min
 Delta R.T.: 0.022 min
 Response: 9067908
 Conc: 2.70 ng/ml



#10 gamma-Chlordane
 R.T.: 5.135 min
 Delta R.T.: -0.052 min
 Response: 1455728
 Conc: 0.15 ng/ml

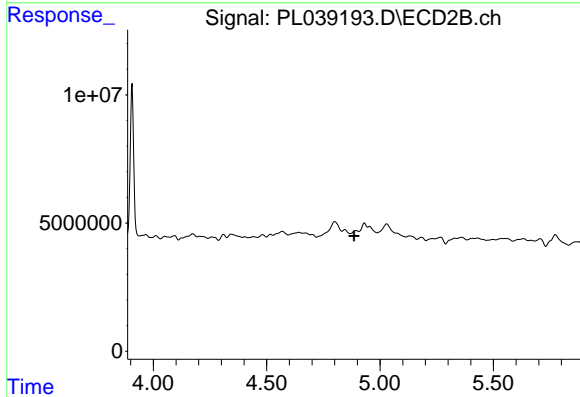


#10 gamma-Chlordane
 R.T.: 0.000 min
 Exp R.T.: 5.983 min
 Response: 0
 Conc: N.D.

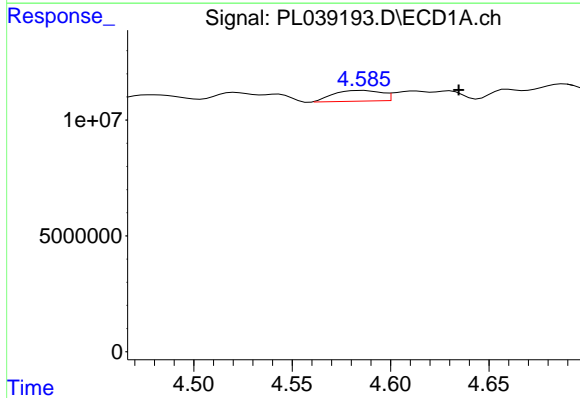


#23 Chlordane-1
 R.T.: 4.153 min
 Delta R.T.: 0.008 min
 Response: 9468263
 Conc: 29.91 ng/ml

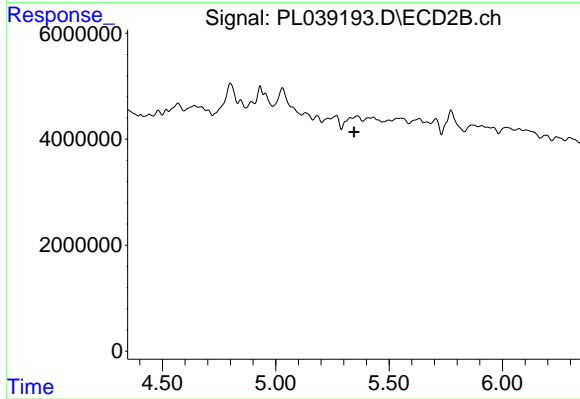
Instrument :
 ECD_L
 ClientSampled :



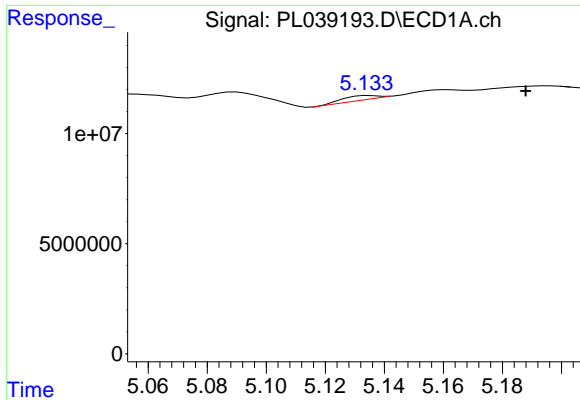
#23 Chlordane-1
 R.T.: 0.000 min
 Exp R.T. : 4.885 min
 Response: 0
 Conc: N.D.



#24 Chlordane-2
 R.T.: 4.586 min
 Delta R.T.: -0.049 min
 Response: 7874145
 Conc: 22.52 ng/ml

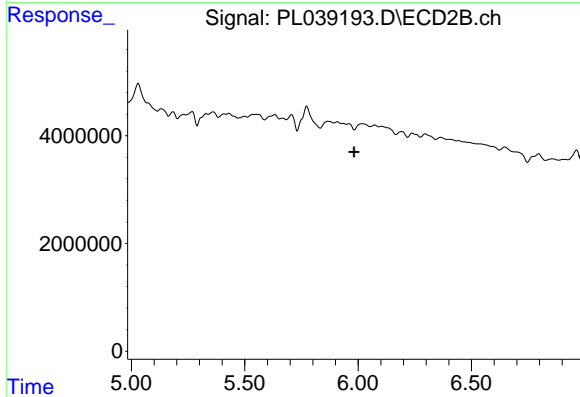


#24 Chlordane-2
 R.T.: 0.000 min
 Exp R.T. : 5.346 min
 Response: 0
 Conc: N.D.

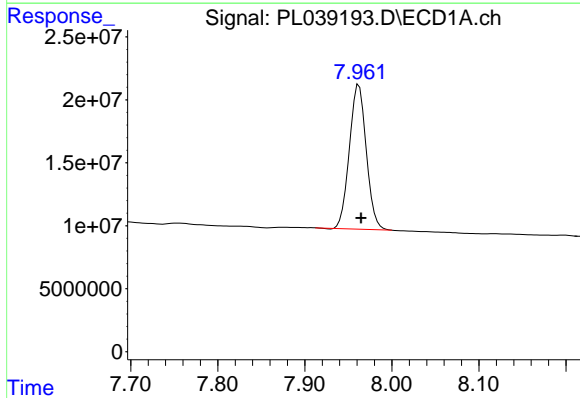


#25 Chlordane-3
 R.T.: 5.135 min
 Delta R.T.: -0.053 min
 Response: 1455728
 Conc: 1.33 ng/ml

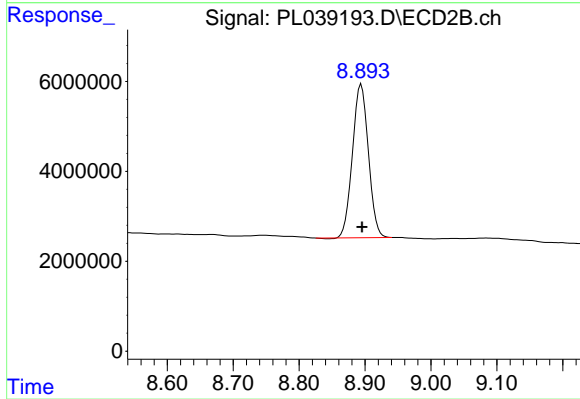
Instrument :
 ECD_L
 ClientSampleId :



#25 Chlordane-3
 R.T.: 0.000 min
 Exp R.T. : 5.983 min
 Response: 0
 Conc: N.D.



#28 Decachlorobiphenyl
 R.T.: 7.962 min
 Delta R.T.: -0.002 min
 Response: 154776066
 Conc: 22.04 ng/ml



#28 Decachlorobiphenyl
 R.T.: 8.894 min
 Delta R.T.: -0.001 min
 Response: 57360361
 Conc: 24.72 ng/ml