

Data Path : Z:\pestpcbsrv\HPCHEM1\ECD_L\Data\PL081518\
 Data File : PL039156.D
 Signal(s) : Signal #1: ECD1A.ch Signal #2: ECD2B.ch
 Acq On : 15 Aug 2018 15:54
 Operator : AJ\SJ
 Sample : J3822-02
 Misc :
 ALS Vial : 14 Sample Multiplier: 1

Instrument :
 ECD_L
ClientSampleId :
 NFB-BF-SS002-01

Manual Integrations
APPROVED
 Sohil
 8/16/2018 12:35:03 PM

Integration File signal 1: autoint1.e
 Integration File signal 2: autoint2.e
 Quant Time: Aug 16 01:11:43 2018
 Quant Method : Z:\pestpcbsrv\HPCHEM1\ECD_L\methods\PL081318.M
 Quant Title : GC Extractables
 QLast Update : Wed Aug 15 15:04:22 2018
 Response via : Initial Calibration
 Integrator: ChemStation

Volume Inj. : 2 µl
 Signal #1 Phase : ZB-MR1 Signal #2 Phase: ZB-MR2
 Signal #1 Info : 30M x 0.32mm x0.5 Signal #2 Info : 30M x 0.32mm x0.25µm

Compound	RT#1	RT#2	Resp#1	Resp#2	ng/ml	ng/ml

System Monitoring Compounds						
1) SA Tetrachlo...	3.303	3.906	142.4E6	56697274	20.371m	21.149
28) SA Decachlor...	7.961	8.894	171.9E6	55124110	24.475m	23.672

Target Compounds

(f)=RT Delta > 1/2 Window (#)=Amounts differ by > 25% (m)=manual int.

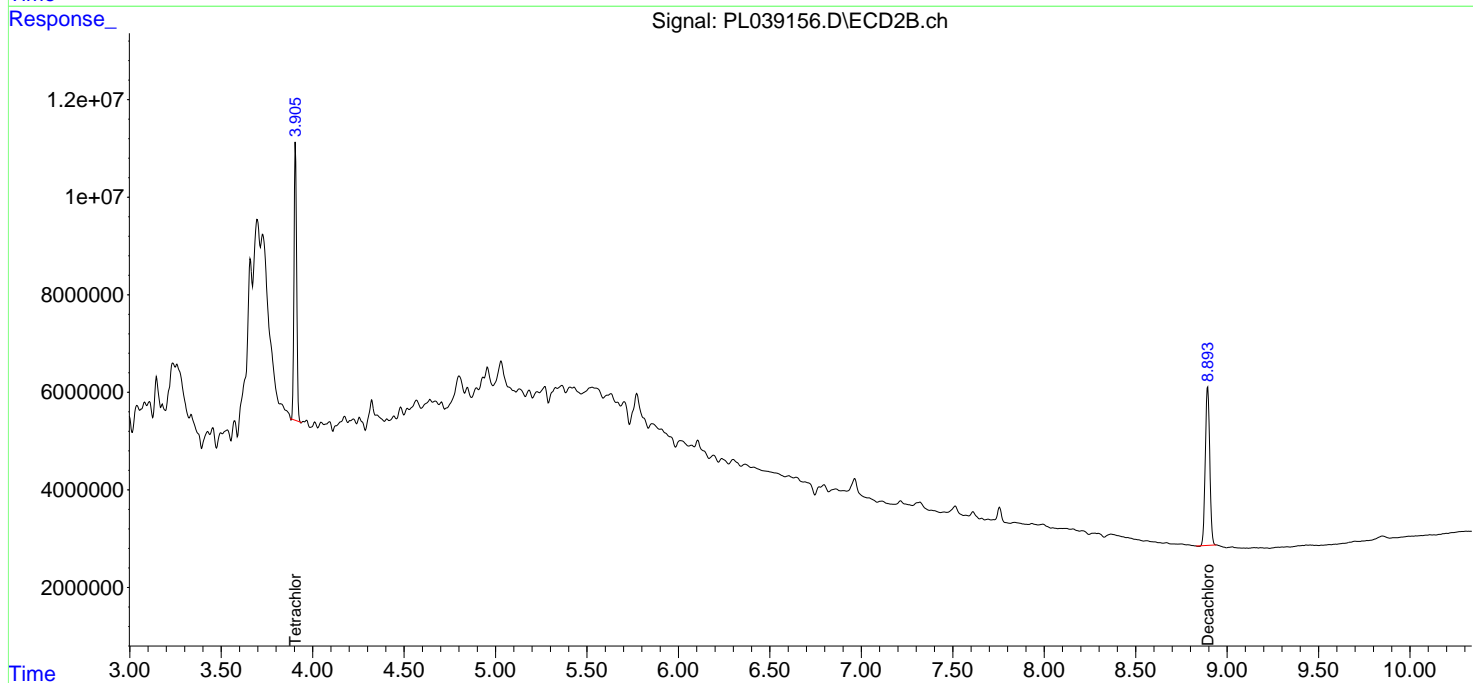
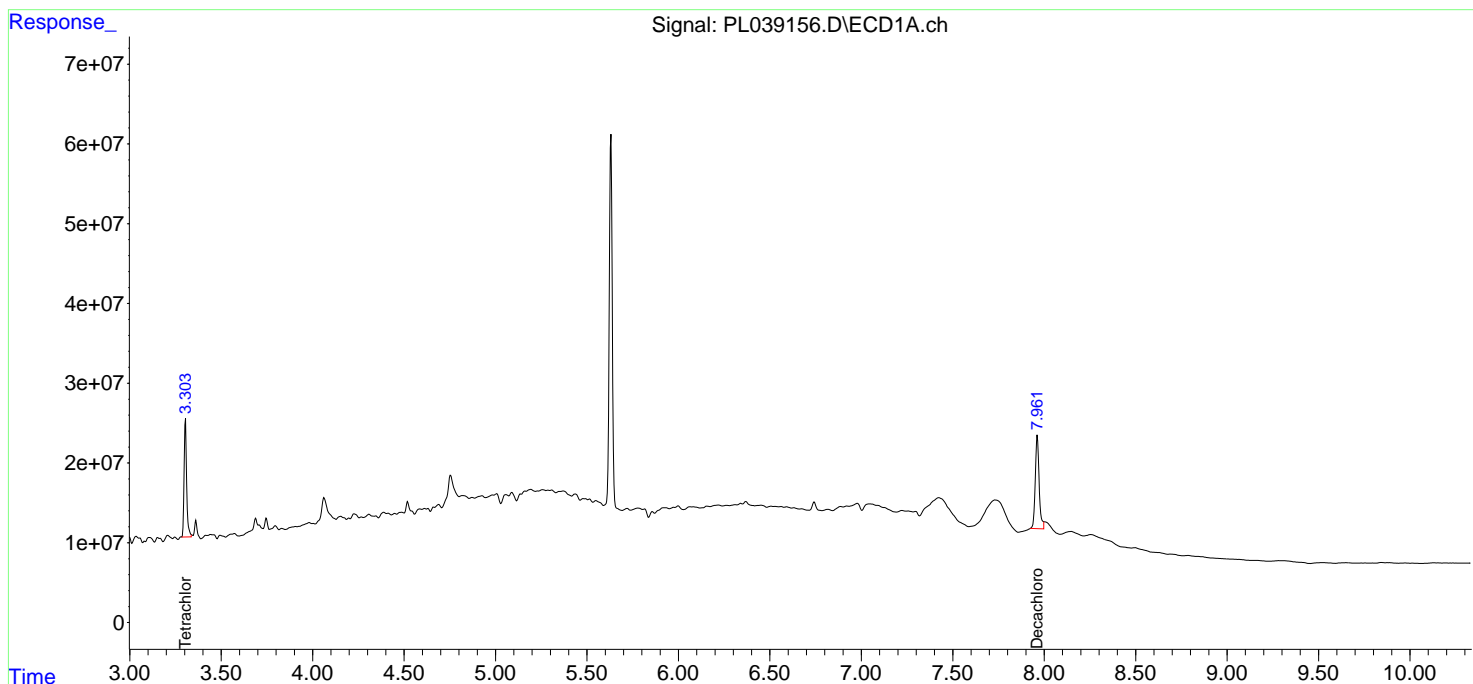
Data Path : Z:\pestpcbsrv\HPCHEM1\ECD_L\Data\PL081518\
 Data File : PL039156.D
 Signal(s) : Signal #1: ECD1A.ch Signal #2: ECD2B.ch
 Acq On : 15 Aug 2018 15:54
 Operator : AJ\SJ
 Sample : J3822-02
 Misc :
 ALS Vial : 14 Sample Multiplier: 1

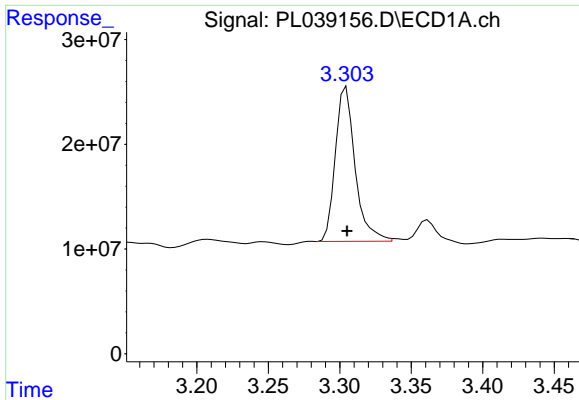
Instrument :
 ECD_L
ClientSampled :
 NFB-BF-SS002-01

Manual Integrations
APPROVED
 Sohil
 8/16/2018 12:35:03 PM

Integration File signal 1: autoint1.e
 Integration File signal 2: autoint2.e
 Quant Time: Aug 16 01:11:43 2018
 Quant Method : Z:\pestpcbsrv\HPCHEM1\ECD_L\methods\PL081318.M
 Quant Title : GC Extractables
 QLast Update : Wed Aug 15 15:04:22 2018
 Response via : Initial Calibration
 Integrator: ChemStation

Volume Inj. : 2 µl
 Signal #1 Phase : ZB-MR1 Signal #2 Phase: ZB-MR2
 Signal #1 Info : 30M x 0.32mm x0.5 Signal #2 Info : 30M x 0.32mm x0.25µm

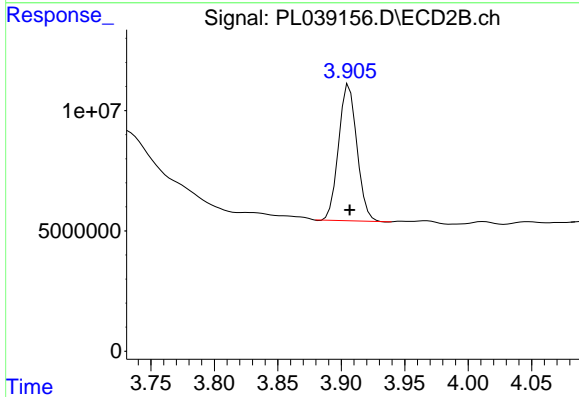




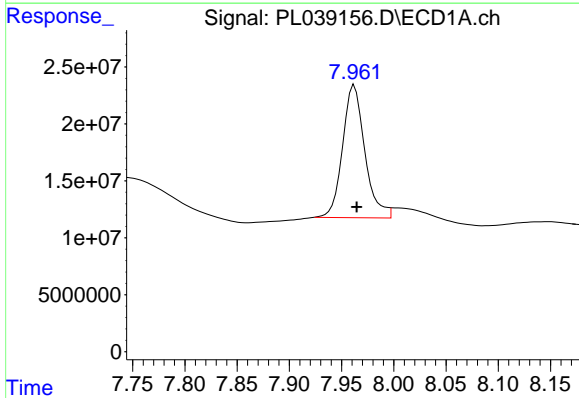
#1 Tetrachloro-m-xylene
 R.T.: 3.303 min
 Delta R.T.: -0.002 min
 Response: 142399632
 Conc: 20.37 ng/ml m

Instrument :
 ECD_L
 ClientSampleId :
 NFB-BF-SS002-01

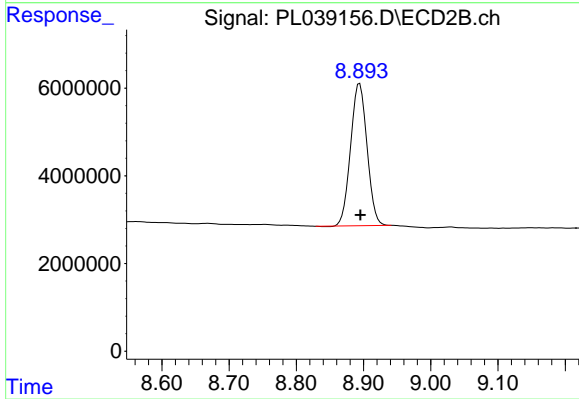
Manual Integrations
APPROVED
 Sohil
 8/16/2018 12:35:03 PM



#1 Tetrachloro-m-xylene
 R.T.: 3.906 min
 Delta R.T.: 0.000 min
 Response: 56697274
 Conc: 21.15 ng/ml



#28 Decachlorobiphenyl
 R.T.: 7.961 min
 Delta R.T.: -0.004 min
 Response: 171899939
 Conc: 24.48 ng/ml m



#28 Decachlorobiphenyl
 R.T.: 8.894 min
 Delta R.T.: -0.001 min
 Response: 55124110
 Conc: 23.67 ng/ml