

Data Path : Z:\pestpcbsrv\HPCHEM1\ECD\_L\Data\PL081518\  
 Data File : PL039167.D  
 Signal(s) : Signal #1: ECD1A.ch Signal #2: ECD2B.ch  
 Acq On : 16 Aug 2018 02:18  
 Operator : AJ\SJ  
 Sample : J4471-16  
 Misc :  
 ALS Vial : 22 Sample Multiplier: 1

Instrument :  
 ECD\_L  
 ClientSampleId :  
 TP-4

Integration File signal 1: autoint1.e  
 Integration File signal 2: autoint2.e  
 Quant Time: Aug 16 03:58:28 2018  
 Quant Method : Z:\pestpcbsrv\HPCHEM1\ECD\_L\methods\PL081318.M  
 Quant Title : GC Extractables  
 QLast Update : Wed Aug 15 15:04:22 2018  
 Response via : Initial Calibration  
 Integrator: ChemStation

Volume Inj. : 2 µl  
 Signal #1 Phase : ZB-MR1 Signal #2 Phase: ZB-MR2  
 Signal #1 Info : 30M x 0.32mm x0.5 Signal #2 Info : 30M x 0.32mm x0.25µm

Compound	RT#1	RT#2	Resp#1	Resp#2	ng/ml	ng/ml
-----						
System Monitoring Compounds						
1) SA Tetrachlo...	3.305	3.907	138.8E6	55829566	19.861	20.825
28) SA Decachlor...	7.963	8.894	145.7E6	50197348	20.743	21.556

Target Compounds

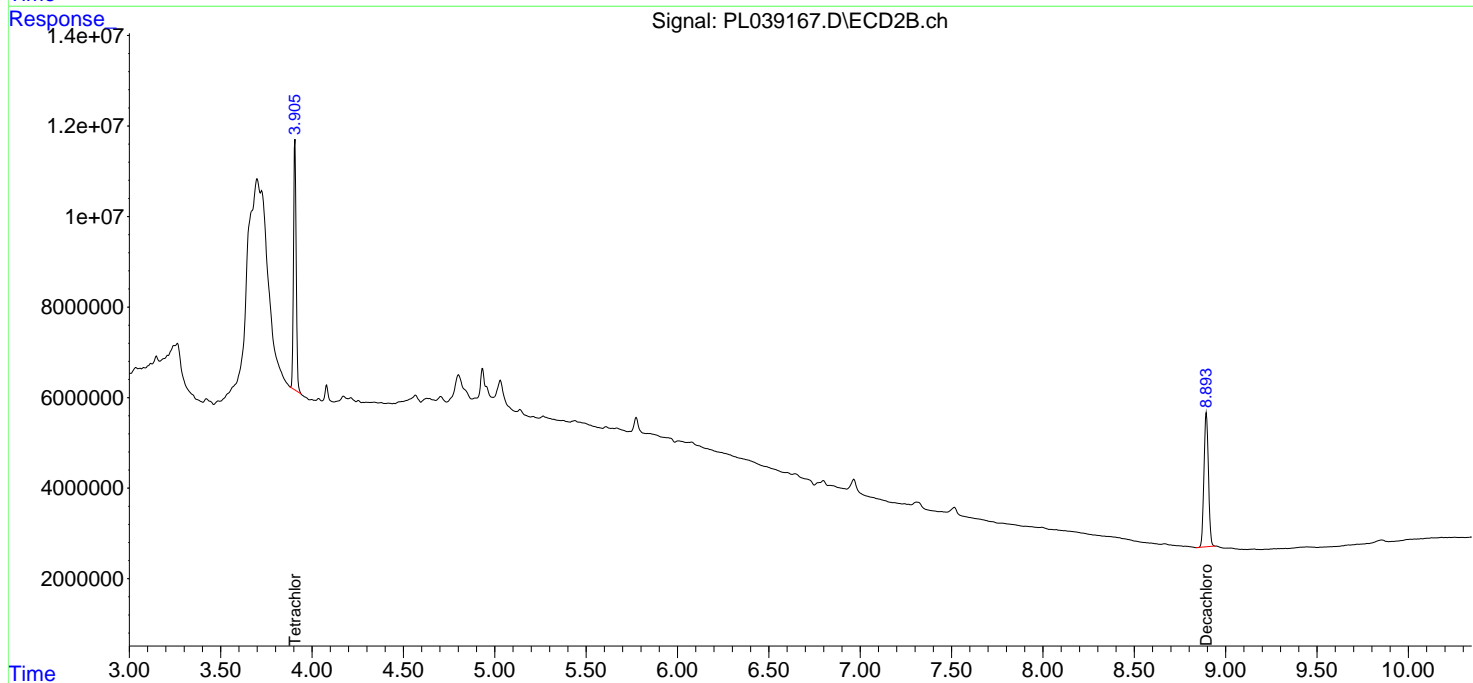
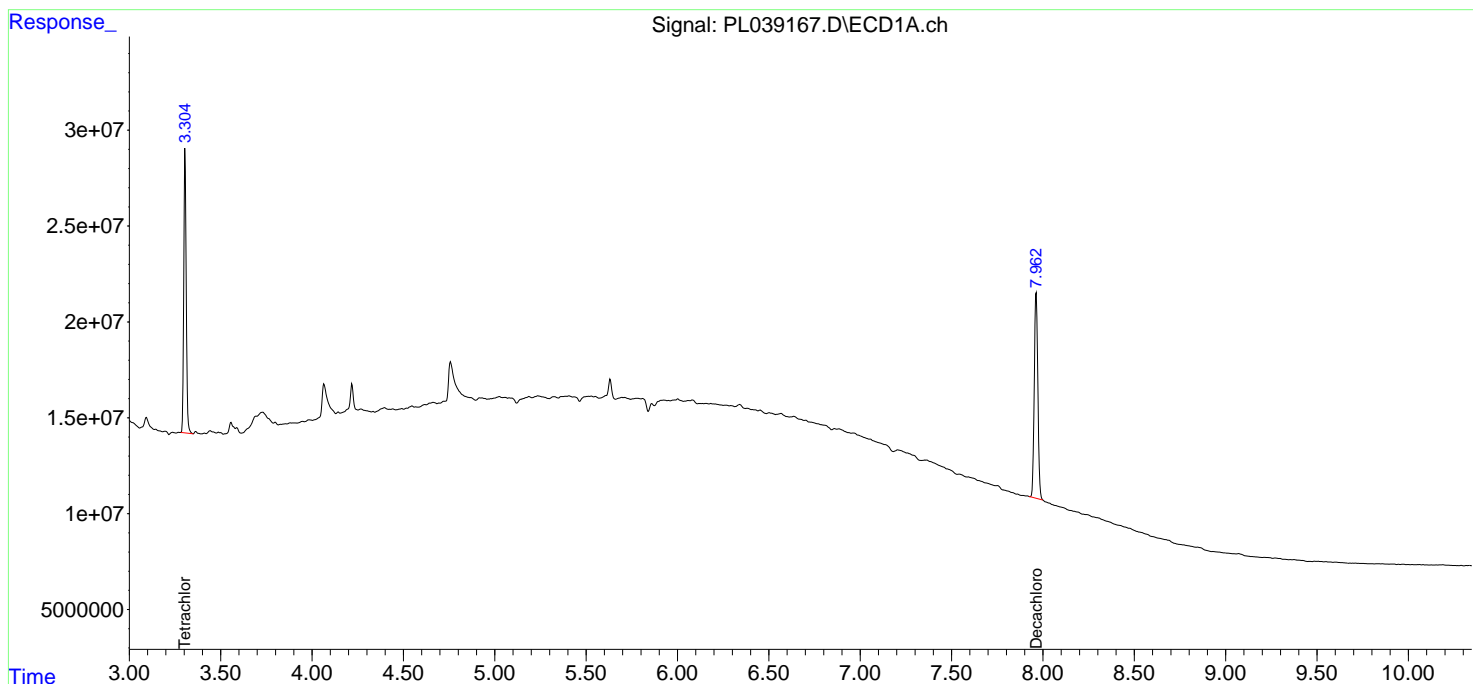
(f)=RT Delta > 1/2 Window (#)=Amounts differ by > 25% (m)=manual int.

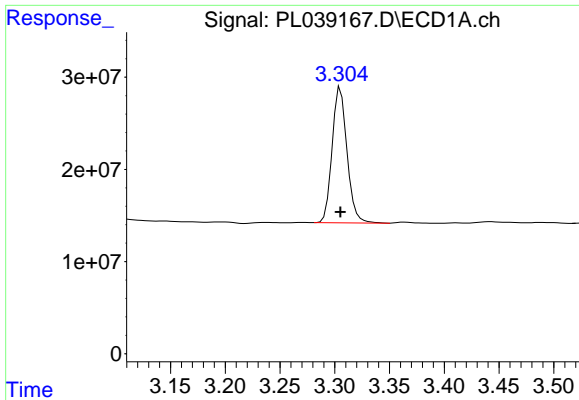
Data Path : Z:\pestpcbsrv\HPCHEM1\ECD\_L\Data\PL081518\  
Data File : PL039167.D  
Signal(s) : Signal #1: ECD1A.ch Signal #2: ECD2B.ch  
Acq On : 16 Aug 2018 02:18  
Operator : AJ\SJ  
Sample : J4471-16  
Misc :  
ALS Vial : 22 Sample Multiplier: 1

Instrument :  
ECD\_L  
ClientSampled :  
TP-4

Integration File signal 1: autoint1.e  
Integration File signal 2: autoint2.e  
Quant Time: Aug 16 03:58:28 2018  
Quant Method : Z:\pestpcbsrv\HPCHEM1\ECD\_L\methods\PL081318.M  
Quant Title : GC Extractables  
QLast Update : Wed Aug 15 15:04:22 2018  
Response via : Initial Calibration  
Integrator: ChemStation

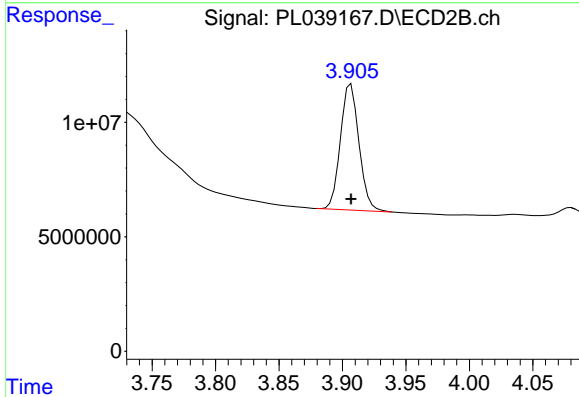
Volume Inj. : 2 µl  
Signal #1 Phase : ZB-MR1 Signal #2 Phase: ZB-MR2  
Signal #1 Info : 30M x 0.32mm x0.5 Signal #2 Info : 30M x 0.32mm x0.25µm



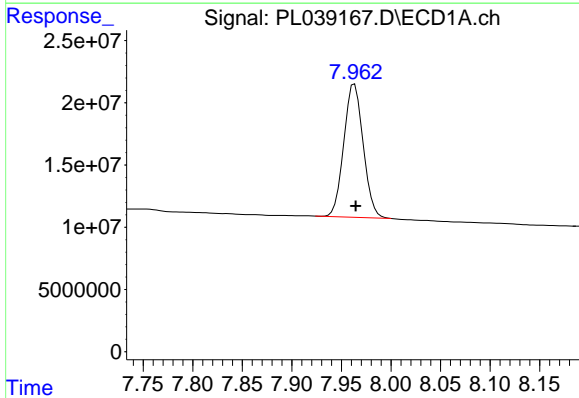


#1 Tetrachloro-m-xylene  
 R.T.: 3.305 min  
 Delta R.T.: 0.000 min  
 Response: 138834112  
 Conc: 19.86 ng/ml

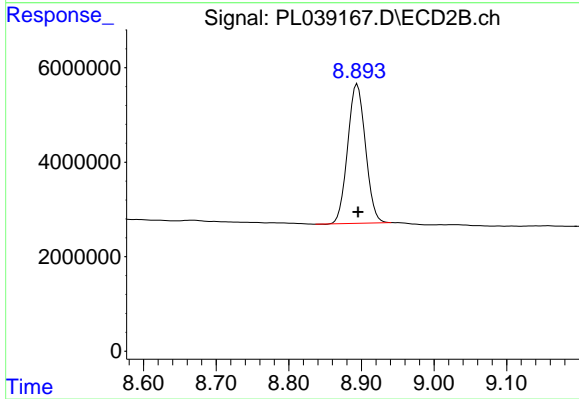
Instrument :  
 ECD\_L  
 ClientSampleId :  
 TP-4



#1 Tetrachloro-m-xylene  
 R.T.: 3.907 min  
 Delta R.T.: 0.000 min  
 Response: 55829566  
 Conc: 20.82 ng/ml



#28 Decachlorobiphenyl  
 R.T.: 7.963 min  
 Delta R.T.: -0.001 min  
 Response: 145683611  
 Conc: 20.74 ng/ml



#28 Decachlorobiphenyl  
 R.T.: 8.894 min  
 Delta R.T.: -0.001 min  
 Response: 50197348  
 Conc: 21.56 ng/ml