

Data Path : Z:\pestpcbsrv\HPCHEM1\ECD\_L\Data\PL081524\  
 Data File : PL091120.D  
 Signal(s) : Signal #1: ECD1A.ch Signal #2: ECD2B.ch  
 Acq On : 15 Aug 2024 19:26  
 Operator : AR\AJ  
 Sample : PB162721BL  
 Misc :  
 ALS Vial : 15 Sample Multiplier: 1

Instrument :  
 ECD\_L  
 ClientSampleId :  
 PB162721BL

Integration File signal 1: autoint1.e  
 Integration File signal 2: autoint2.e  
 Quant Time: Aug 16 07:25:07 2024  
 Quant Method : Z:\pestpcbsrv\HPCHEM1\ECD\_L\methods\PL081324.M  
 Quant Title : GC Extractables  
 QLast Update : Wed Aug 14 13:09:19 2024  
 Response via : Initial Calibration  
 Integrator: ChemStation

Volume Inj. : 1 µl  
 Signal #1 Phase : ZB-MR2 Signal #2 Phase: ZB-MR1  
 Signal #1 Info : 30M x 0.32mm x0.2 Signal #2 Info : 30M x 0.32mm x0.5µm

Compound	RT#1	RT#2	Resp#1	Resp#2	ng/ml	ng/ml
-----						
System Monitoring Compounds						
1) SA Tetrachlo...	3.545	2.785	40598770	37311164	18.908	19.114
28) SA Decachlor...	9.057	7.926	32959266	39491654	21.619	20.850
Target Compounds						
2) A alpha-BHC	0.000	3.273f	0	130138	N.D.	0.047 #
3) MA gamma-BHC...	0.000	3.634f	0	616289	N.D.	0.234 #
4) MA Heptachlor	0.000	3.972	0	11353	N.D.	0.004 #
5) MB Aldrin	0.000	4.257f	0	8766564	N.D.	3.565 #
7) B delta-BHC	0.000	4.167f	0	1188627	N.D.	0.469 #
8) B Heptachlo...	5.684	4.760f	37465909	-92893	15.314	N.D. #
9) A Endosulfan I	0.000	5.099	0	849408	N.D.	0.403 #
10) B gamma-Chl...	0.000	4.986	0	5116408	N.D.	2.164 #
11) B alpha-Chl...	0.000	5.039f	0	6240070	N.D.	2.652 #
13) MA Dieldrin	0.000	5.349f	0	6117356	N.D.	2.686 #
14) MA Endrin	0.000	5.668f	0	5660073	N.D.	2.778 #
15) B Endosulfa...	6.770f	5.916f	2450057	1093892	1.211	0.565 #
17) MA 4,4'-DDT	0.000	6.036	0	253497	N.D.	0.143 #
18) B Endrin al...	0.000	6.144f	0	241689	N.D.	0.155 #
19) B Endosulfa...	0.000	6.369f	0	125911	N.D.	0.065 #
22) Mirex	8.134f	0.000	2833154	0	1.665	N.D. #
23) Chlordane-1	0.000	3.787	0	494265	N.D.	6.780 #
24) Chlordane-2	0.000	4.346	0	34852656	N.D.	370.950 #
25) Chlordane-3	0.000	4.986	0	5116408	N.D.	21.069 #
26) Chlordane-4	0.000	5.039	0	6240070	N.D.	26.762 #
27) Chlordane-5	0.000	5.742f	0	1161170	N.D.	16.771 #

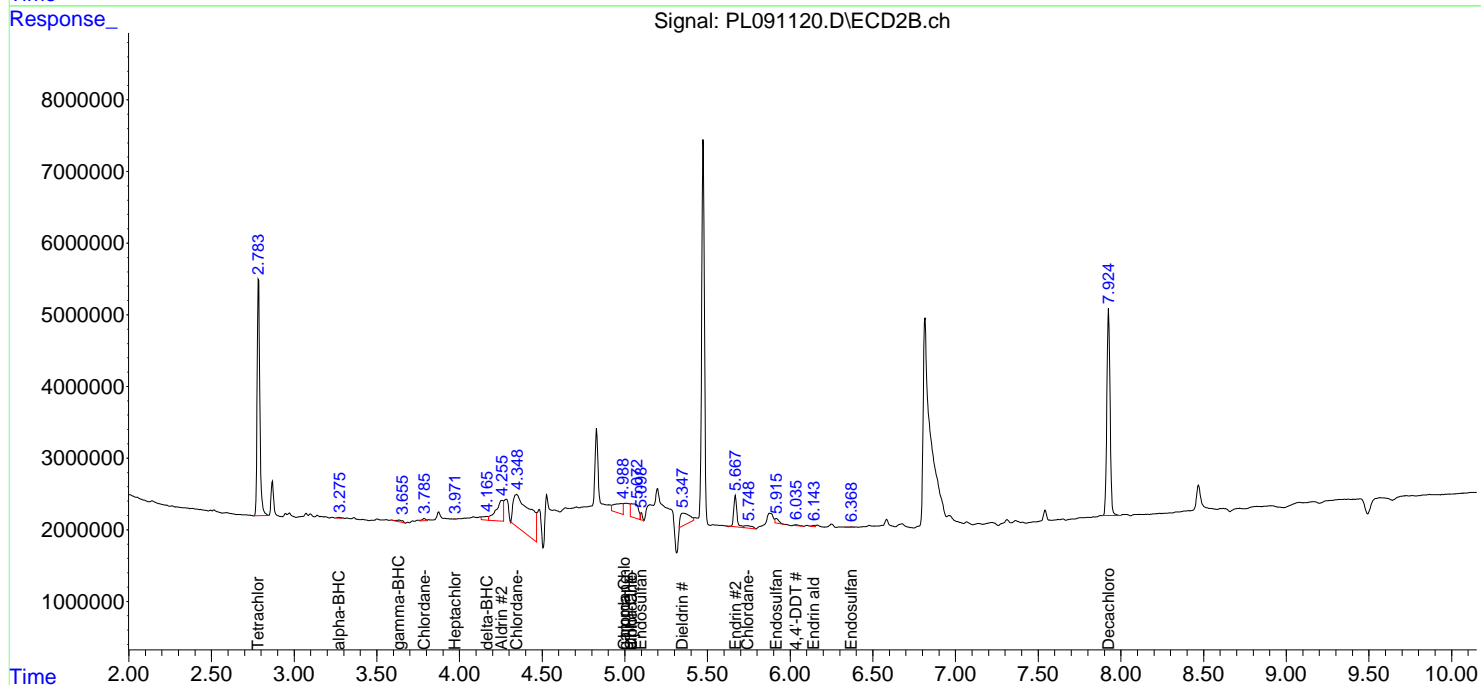
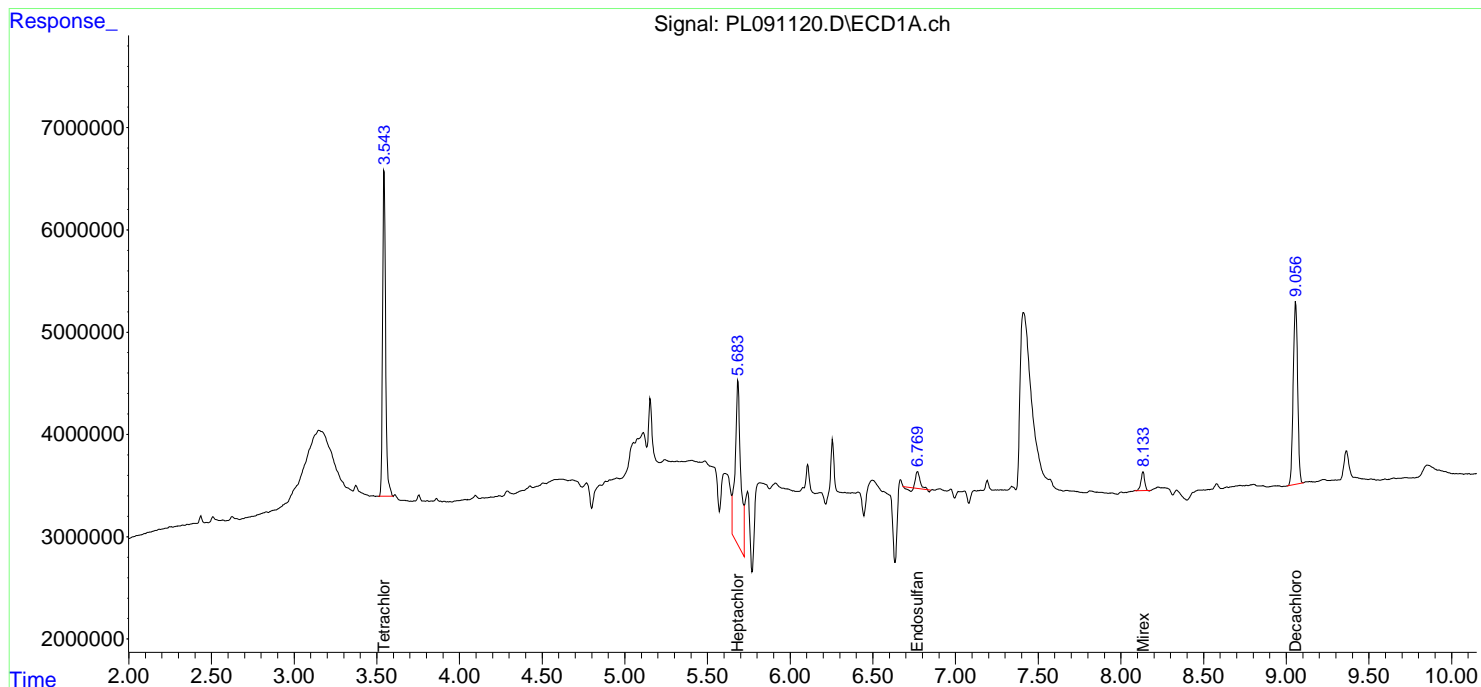
(f)=RT Delta > 1/2 Window (#)=Amounts differ by > 25% (m)=manual int.

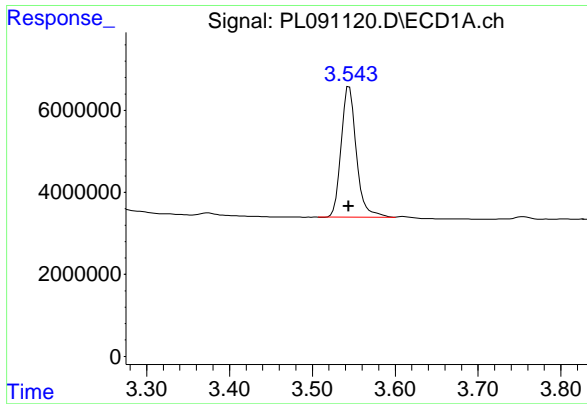
Data Path : Z:\pestpcbsrv\HPCHEM1\ECD\_L\Data\PL081524\  
 Data File : PL091120.D  
 Signal(s) : Signal #1: ECD1A.ch Signal #2: ECD2B.ch  
 Acq On : 15 Aug 2024 19:26  
 Operator : AR\AJ  
 Sample : PB162721BL  
 Misc :  
 ALS Vial : 15 Sample Multiplier: 1

Instrument :  
 ECD\_L  
 ClientSampleId :  
 PB162721BL

Integration File signal 1: autoint1.e  
 Integration File signal 2: autoint2.e  
 Quant Time: Aug 16 07:25:07 2024  
 Quant Method : Z:\pestpcbsrv\HPCHEM1\ECD\_L\methods\PL081324.M  
 Quant Title : GC Extractables  
 QLast Update : Wed Aug 14 13:09:19 2024  
 Response via : Initial Calibration  
 Integrator: ChemStation

Volume Inj. : 1 µl  
 Signal #1 Phase : ZB-MR2 Signal #2 Phase: ZB-MR1  
 Signal #1 Info : 30M x 0.32mm x0.2 Signal #2 Info : 30M x 0.32mm x0.5µm

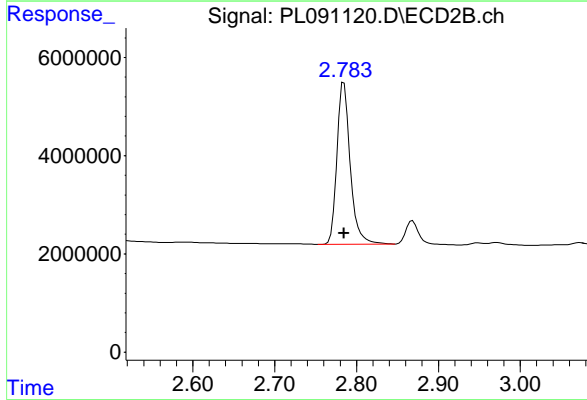




#1 Tetrachloro-m-xylene

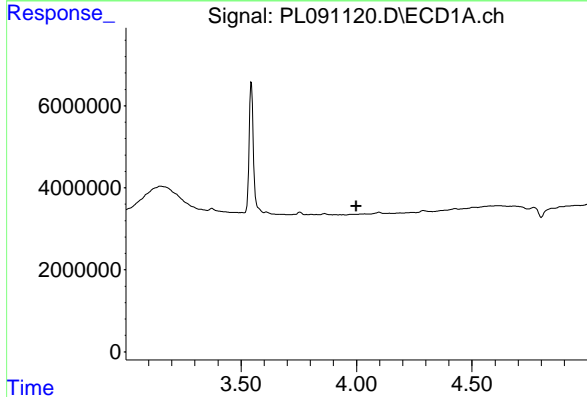
R.T.: 3.545 min  
 Delta R.T.: 0.000 min  
 Response: 40598770  
 Conc: 18.91 ng/ml

Instrument :  
 ECD\_L  
 ClientSampleId :  
 PB162721BL



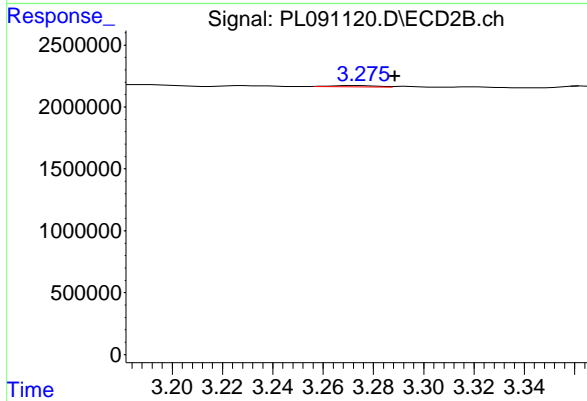
#1 Tetrachloro-m-xylene

R.T.: 2.785 min  
 Delta R.T.: 0.000 min  
 Response: 37311164  
 Conc: 19.11 ng/ml



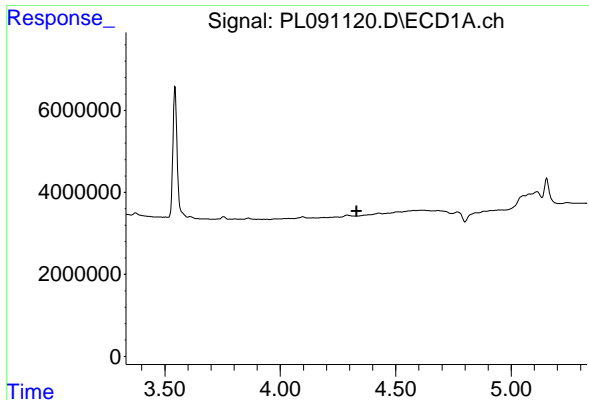
#2 alpha-BHC

R.T.: 0.000 min  
 Exp R.T. : 3.999 min  
 Response: 0  
 Conc: N.D.



#2 alpha-BHC

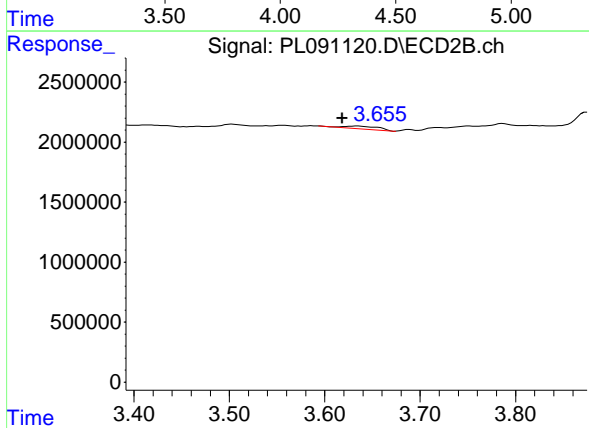
R.T.: 3.273 min  
 Delta R.T.: -0.016 min  
 Response: 130138  
 Conc: 0.05 ng/ml



#3 gamma-BHC (Lindane)

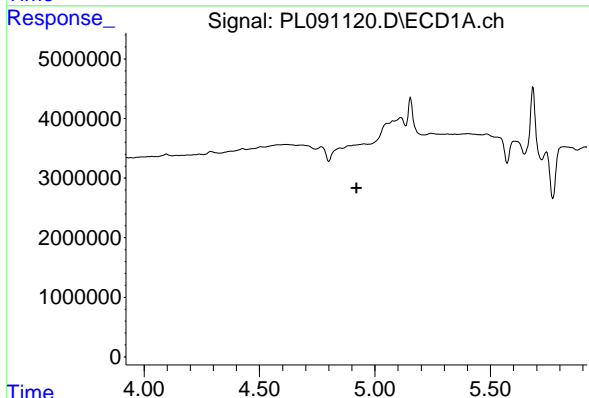
R.T.: 0.000 min  
 Exp R.T.: 4.332 min  
 Response: 0  
 Conc: N.D.

Instrument :  
 ECD\_L  
 ClientSampleId :  
 PB162721BL



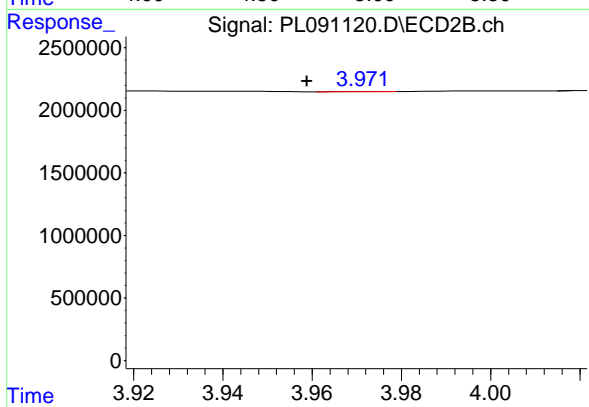
#3 gamma-BHC (Lindane)

R.T.: 3.634 min  
 Delta R.T.: 0.016 min  
 Response: 616289  
 Conc: 0.23 ng/ml



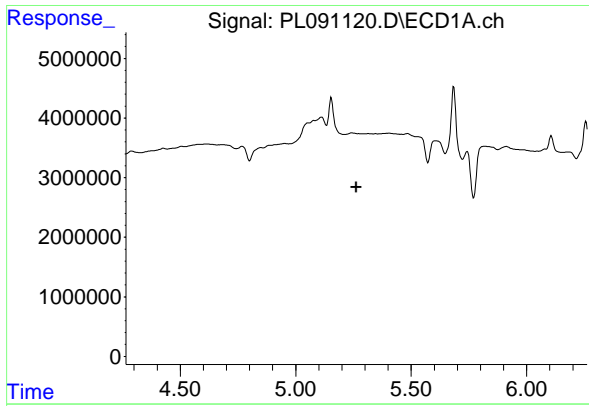
#4 Heptachlor

R.T.: 0.000 min  
 Exp R.T.: 4.921 min  
 Response: 0  
 Conc: N.D.



#4 Heptachlor

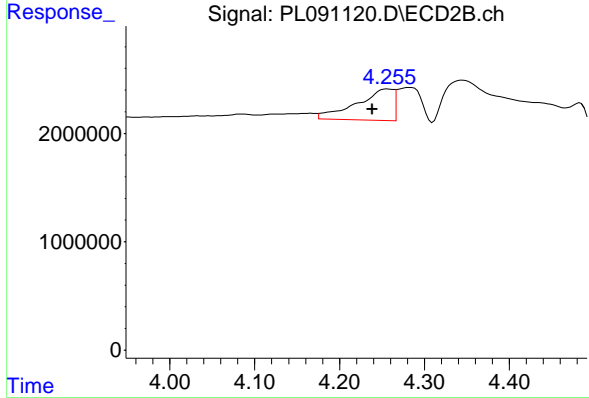
R.T.: 3.972 min  
 Delta R.T.: 0.013 min  
 Response: 11353  
 Conc: 0.00 ng/ml



#5 Aldrin

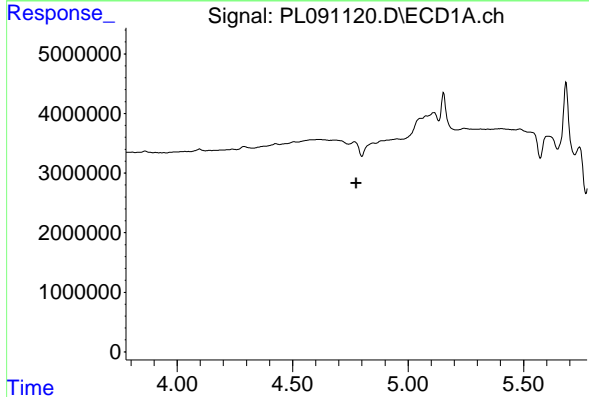
R.T.: 0.000 min  
 Exp R.T.: 5.262 min  
 Response: 0  
 Conc: N.D.

Instrument :  
 ECD\_L  
 ClientSampleId :  
 PB162721BL



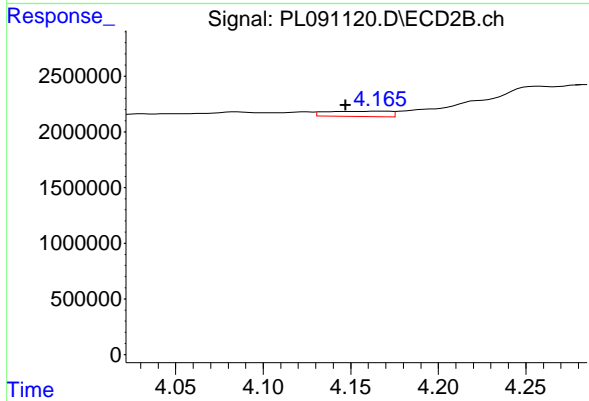
#5 Aldrin

R.T.: 4.257 min  
 Delta R.T.: 0.018 min  
 Response: 8766564  
 Conc: 3.56 ng/ml



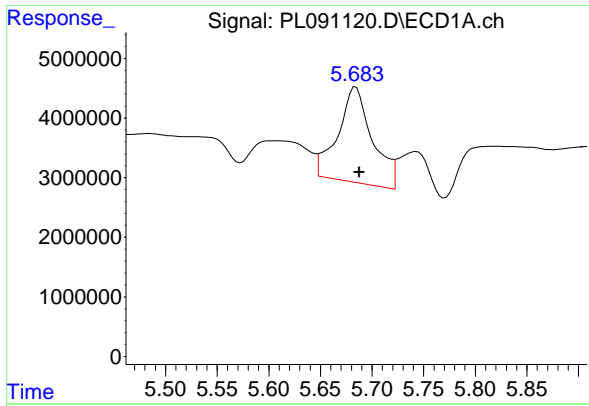
#7 delta-BHC

R.T.: 0.000 min  
 Exp R.T.: 4.775 min  
 Response: 0  
 Conc: N.D.



#7 delta-BHC

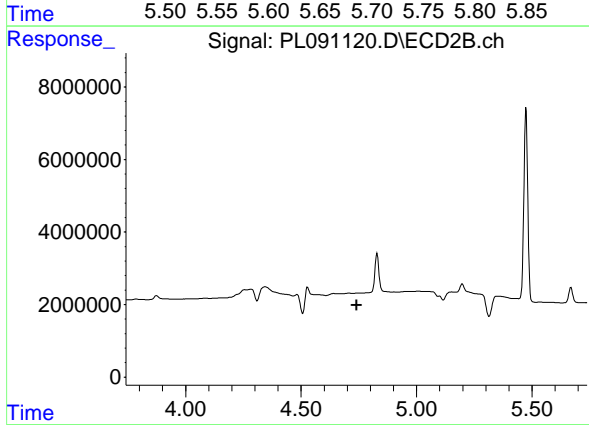
R.T.: 4.167 min  
 Delta R.T.: 0.020 min  
 Response: 1188627  
 Conc: 0.47 ng/ml



#8 Heptachlor epoxide

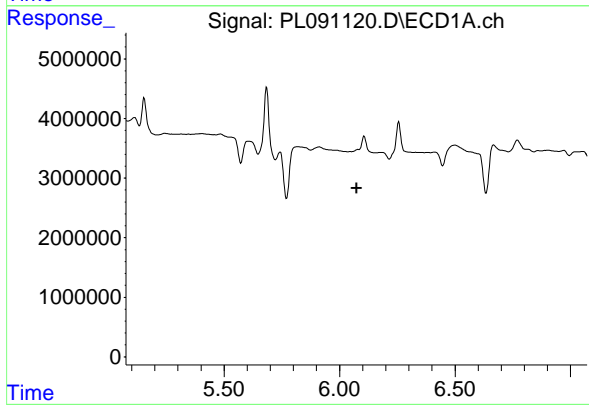
R.T.: 5.684 min  
 Delta R.T.: -0.004 min  
 Response: 37465909  
 Conc: 15.31 ng/ml

Instrument :  
 ECD\_L  
 ClientSampleId :  
 PB162721BL



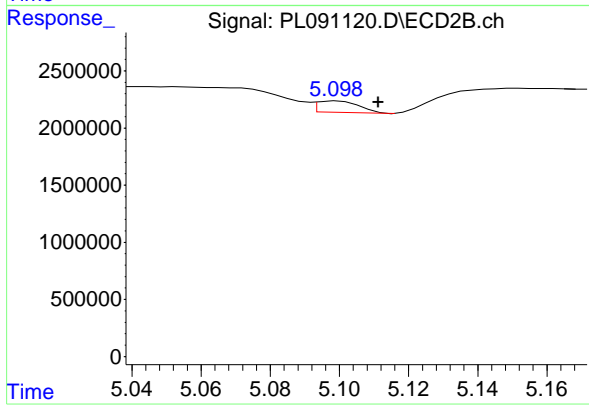
#8 Heptachlor epoxide

R.T.: 4.760 min  
 Delta R.T.: 0.019 min  
 Response: -92893  
 Conc: N.D.



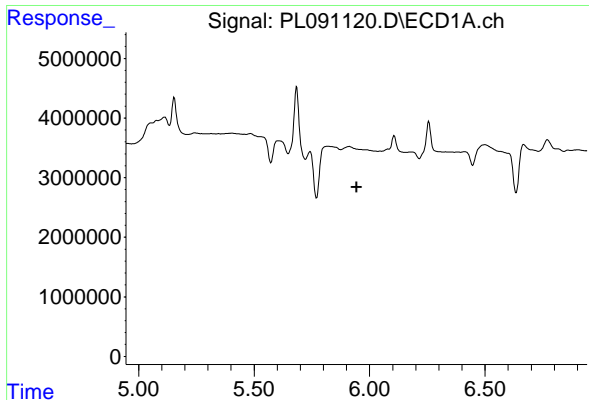
#9 Endosulfan I

R.T.: 0.000 min  
 Exp R.T. : 6.073 min  
 Response: 0  
 Conc: N.D.



#9 Endosulfan I

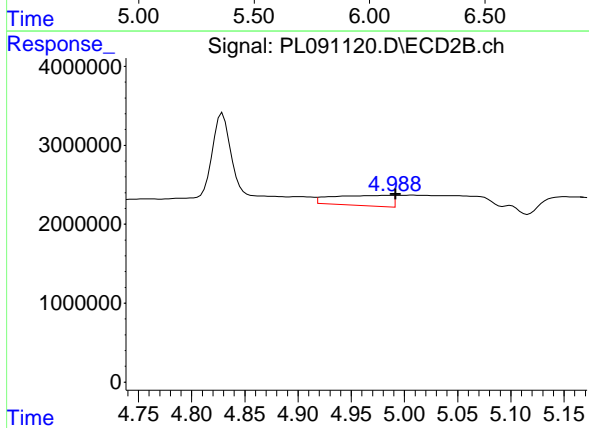
R.T.: 5.099 min  
 Delta R.T.: -0.012 min  
 Response: 849408  
 Conc: 0.40 ng/ml



#10 gamma-Chlordane

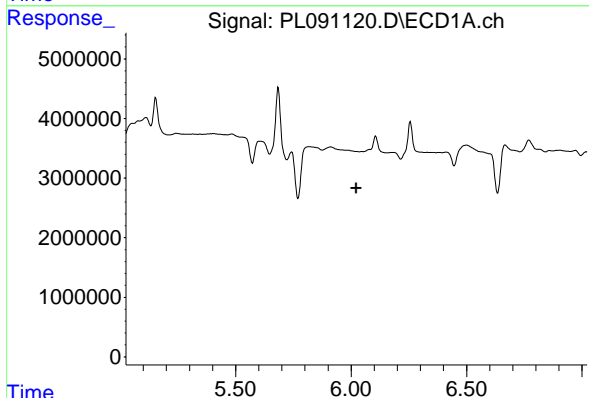
R.T.: 0.000 min  
 Exp R.T.: 5.943 min  
 Response: 0  
 Conc: N.D.

Instrument :  
 ECD\_L  
 ClientSampleId :  
 PB162721BL



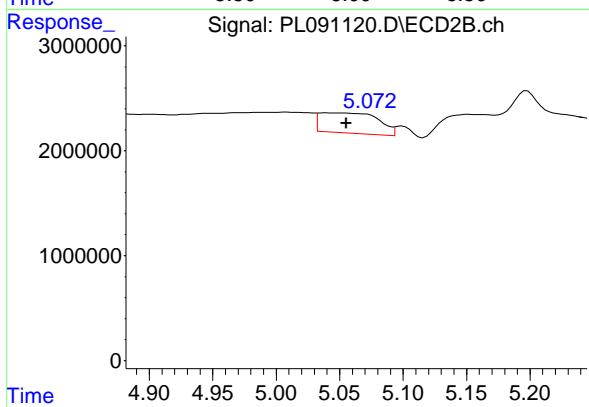
#10 gamma-Chlordane

R.T.: 4.986 min  
 Delta R.T.: -0.006 min  
 Response: 5116408  
 Conc: 2.16 ng/ml



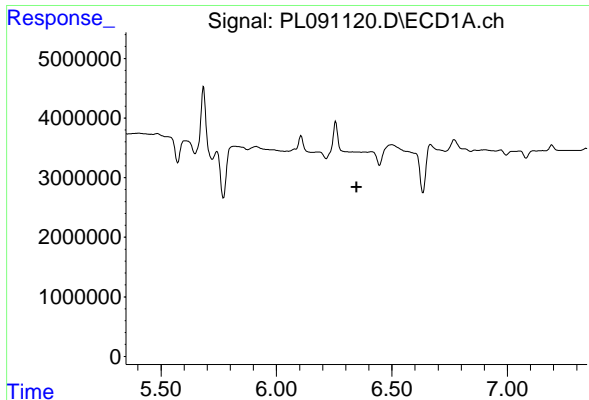
#11 alpha-Chlordane

R.T.: 0.000 min  
 Exp R.T.: 6.022 min  
 Response: 0  
 Conc: N.D.



#11 alpha-Chlordane

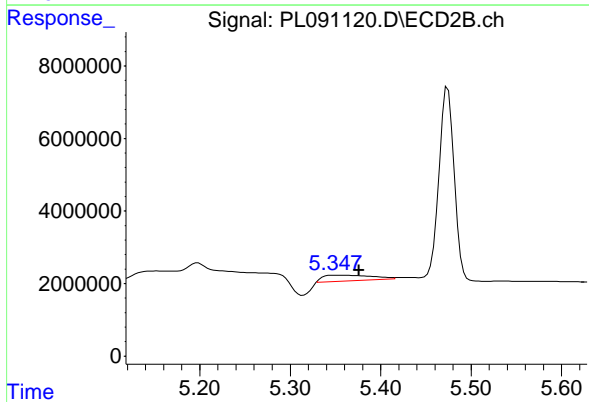
R.T.: 5.039 min  
 Delta R.T.: -0.016 min  
 Response: 6240070  
 Conc: 2.65 ng/ml



#13 Dieldrin

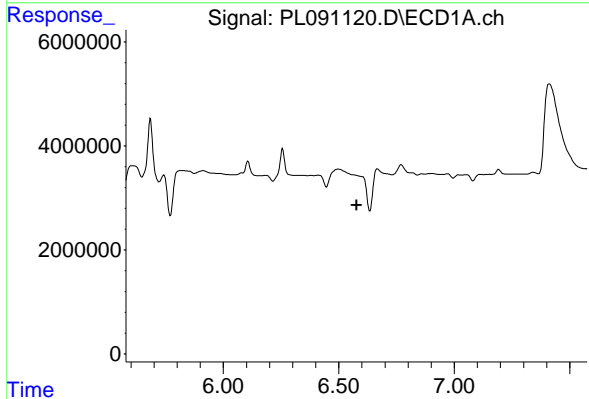
R.T.: 0.000 min  
 Exp R.T. : 6.348 min  
 Response: 0  
 Conc: N.D.

Instrument :  
 ECD\_L  
 ClientSampleId :  
 PB162721BL



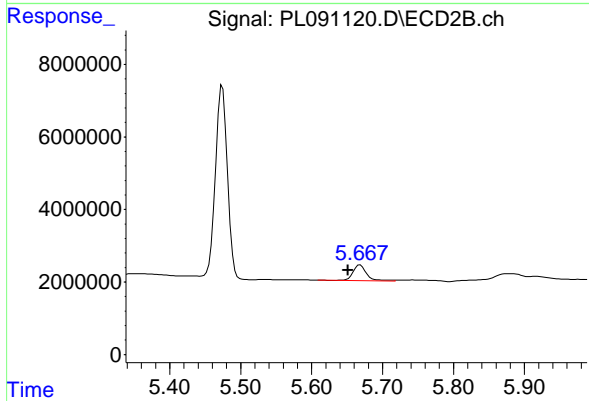
#13 Dieldrin

R.T.: 5.349 min  
 Delta R.T.: -0.027 min  
 Response: 6117356  
 Conc: 2.69 ng/ml



#14 Endrin

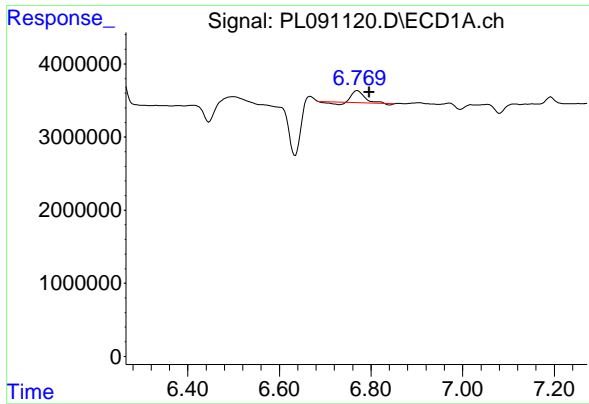
R.T.: 0.000 min  
 Exp R.T. : 6.577 min  
 Response: 0  
 Conc: N.D.



#14 Endrin

R.T.: 5.668 min  
 Delta R.T.: 0.017 min  
 Response: 5660073  
 Conc: 2.78 ng/ml

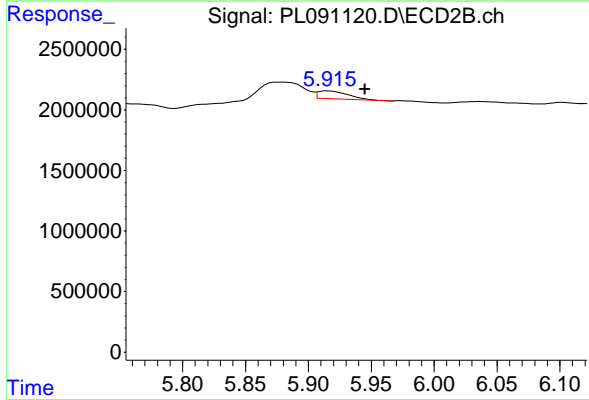




#15 Endosulfan II

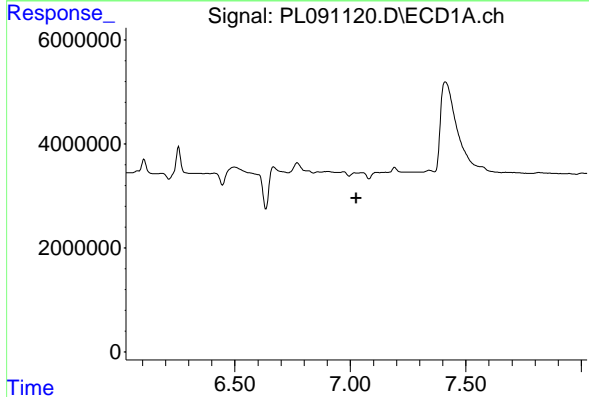
R.T.: 6.770 min  
 Delta R.T.: -0.026 min  
 Response: 2450057  
 Conc: 1.21 ng/ml

Instrument :  
 ECD\_L  
 ClientSampleId :  
 PB162721BL



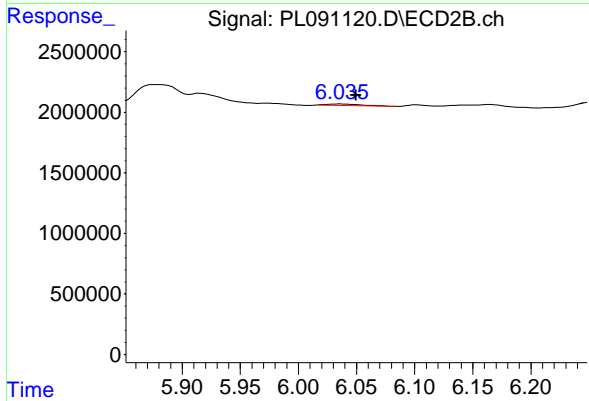
#15 Endosulfan II

R.T.: 5.916 min  
 Delta R.T.: -0.029 min  
 Response: 1093892  
 Conc: 0.57 ng/ml



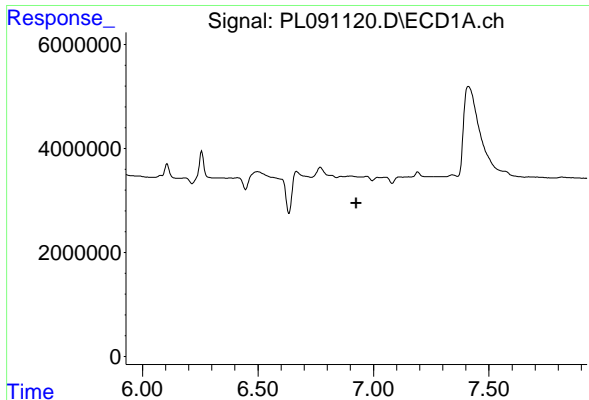
#17 4,4'-DDT

R.T.: 0.000 min  
 Exp R.T. : 7.025 min  
 Response: 0  
 Conc: N.D.



#17 4,4'-DDT

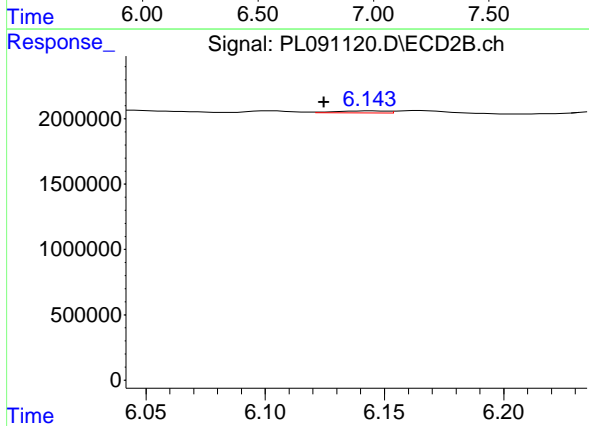
R.T.: 6.036 min  
 Delta R.T.: -0.013 min  
 Response: 253497  
 Conc: 0.14 ng/ml



#18 Endrin aldehyde

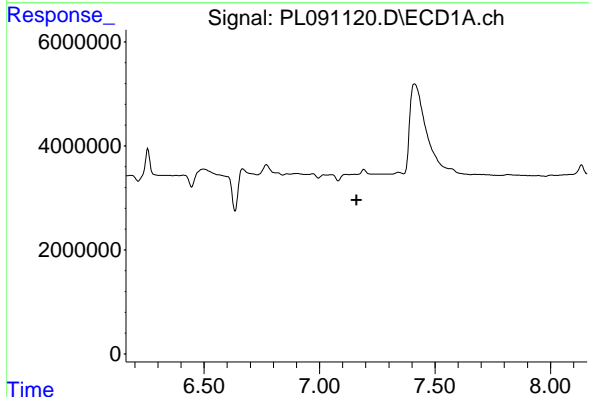
R.T.: 0.000 min  
 Exp R.T.: 6.925 min  
 Response: 0  
 Conc: N.D.

Instrument : ECD\_L  
 ClientSampleId : PB162721BL



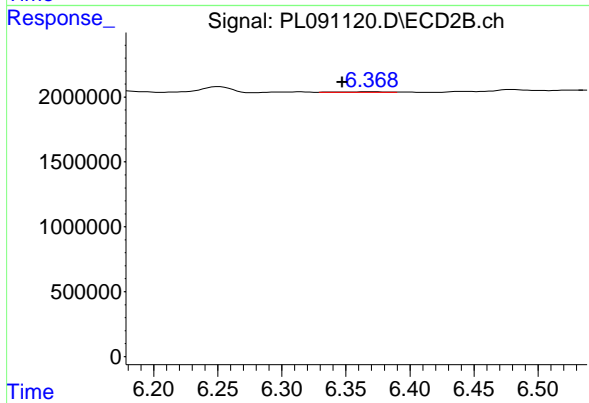
#18 Endrin aldehyde

R.T.: 6.144 min  
 Delta R.T.: 0.019 min  
 Response: 241689  
 Conc: 0.16 ng/ml



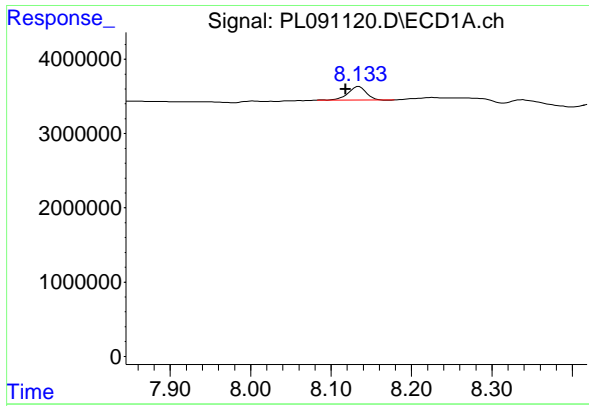
#19 Endosulfan Sulfate

R.T.: 0.000 min  
 Exp R.T.: 7.160 min  
 Response: 0  
 Conc: N.D.



#19 Endosulfan Sulfate

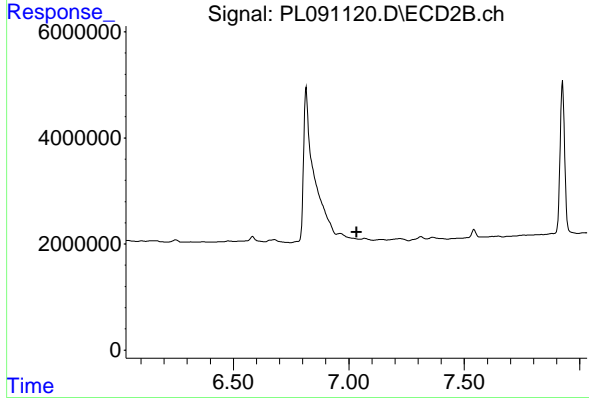
R.T.: 6.369 min  
 Delta R.T.: 0.022 min  
 Response: 125911  
 Conc: 0.07 ng/ml



#22 Mirex

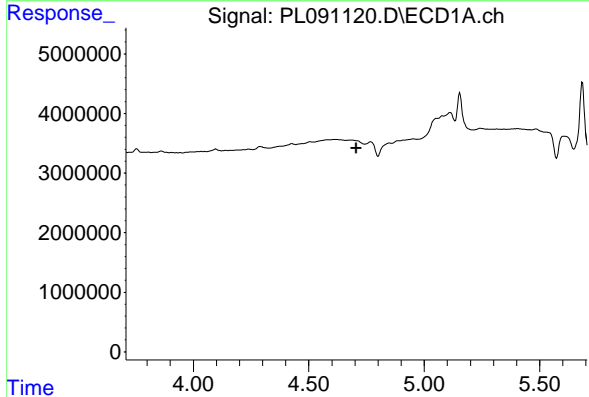
R.T.: 8.134 min  
 Delta R.T.: 0.016 min  
 Response: 2833154  
 Conc: 1.67 ng/ml

Instrument :  
 ECD\_L  
 ClientSampleId :  
 PB162721BL



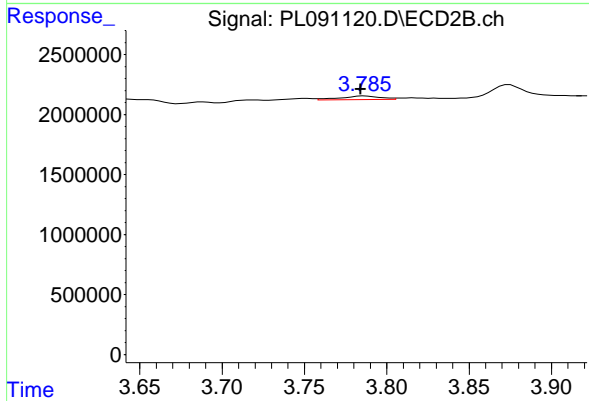
#22 Mirex

R.T.: 0.000 min  
 Exp R.T. : 7.034 min  
 Response: 0  
 Conc: N.D.



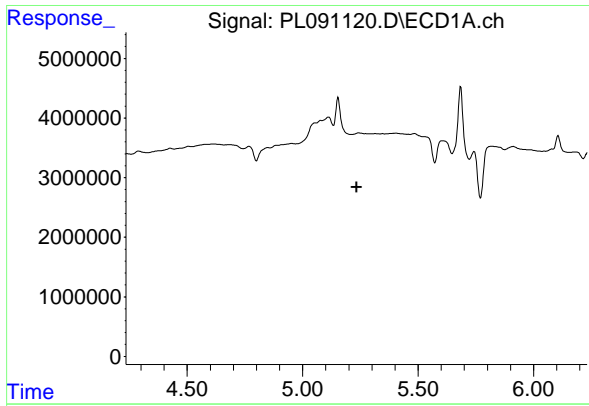
#23 Chlordane-1

R.T.: 0.000 min  
 Exp R.T. : 4.706 min  
 Response: 0  
 Conc: N.D.



#23 Chlordane-1

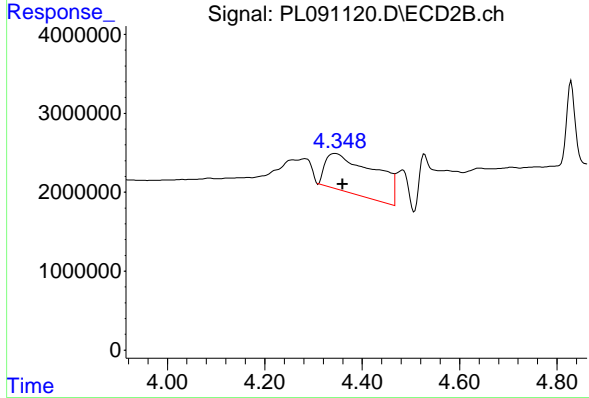
R.T.: 3.787 min  
 Delta R.T.: 0.002 min  
 Response: 494265  
 Conc: 6.78 ng/ml



#24 Chlordane-2

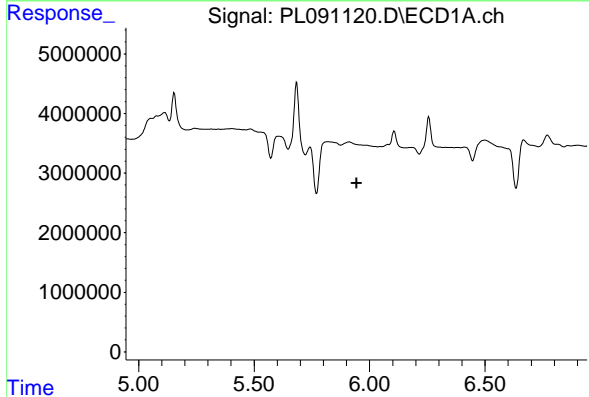
R.T.: 0.000 min  
 Exp R.T.: 5.234 min  
 Response: 0  
 Conc: N.D.

Instrument :  
 ECD\_L  
 ClientSampleId :  
 PB162721BL



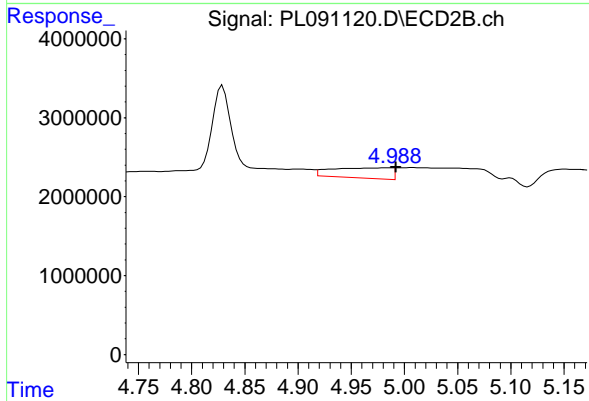
#24 Chlordane-2

R.T.: 4.346 min  
 Delta R.T.: -0.014 min  
 Response: 34852656  
 Conc: 370.95 ng/ml



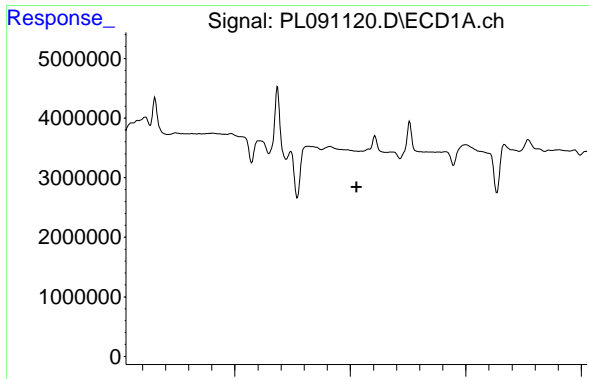
#25 Chlordane-3

R.T.: 0.000 min  
 Exp R.T.: 5.944 min  
 Response: 0  
 Conc: N.D.



#25 Chlordane-3

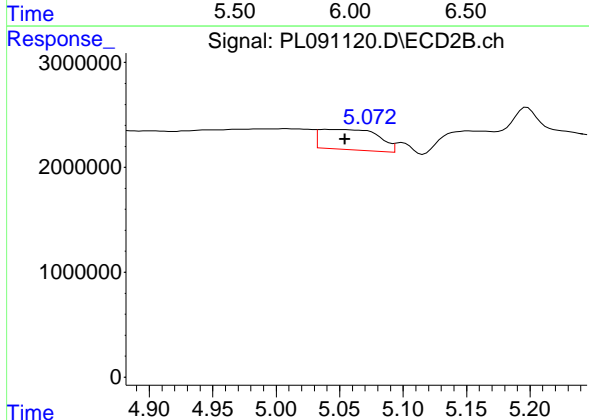
R.T.: 4.986 min  
 Delta R.T.: -0.006 min  
 Response: 5116408  
 Conc: 21.07 ng/ml



#26 Chlordane-4

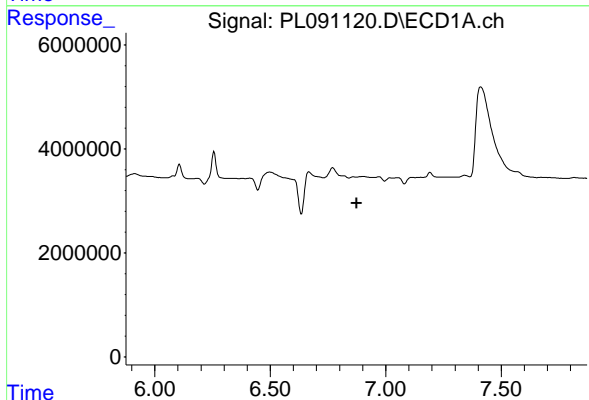
R.T.: 0.000 min  
 Exp R.T.: 6.026 min  
 Response: 0  
 Conc: N.D.

Instrument :  
 ECD\_L  
 ClientSampleId :  
 PB162721BL



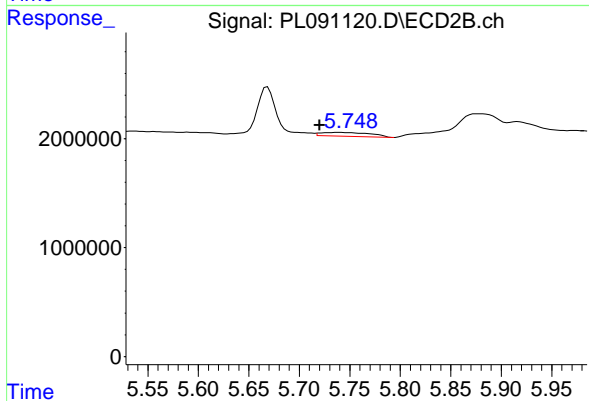
#26 Chlordane-4

R.T.: 5.039 min  
 Delta R.T.: -0.015 min  
 Response: 6240070  
 Conc: 26.76 ng/ml



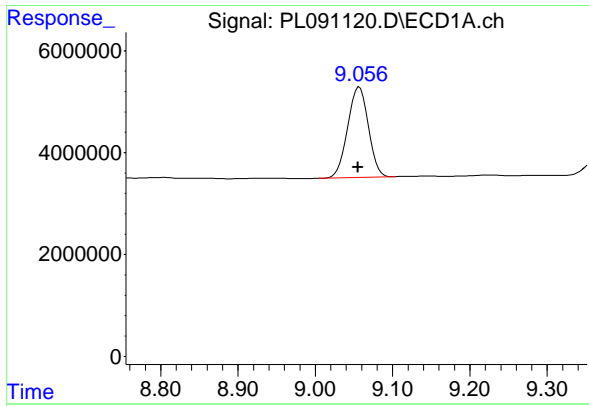
#27 Chlordane-5

R.T.: 0.000 min  
 Exp R.T.: 6.875 min  
 Response: 0  
 Conc: N.D.



#27 Chlordane-5

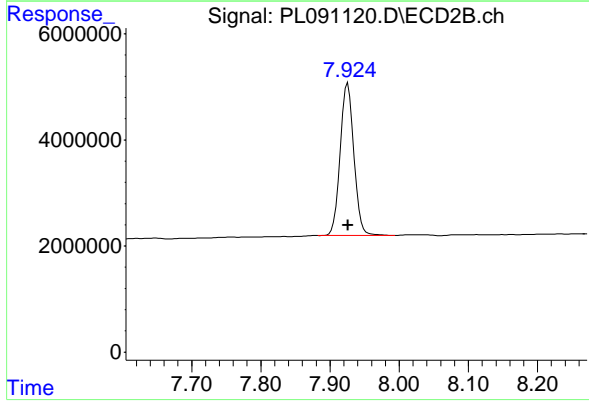
R.T.: 5.742 min  
 Delta R.T.: 0.022 min  
 Response: 1161170  
 Conc: 16.77 ng/ml



#28 Decachlorobiphenyl

R.T.: 9.057 min  
Delta R.T.: 0.002 min  
Response: 32959266  
Conc: 21.62 ng/ml

Instrument :  
ECD\_L  
ClientSampleId :  
PB162721BL



#28 Decachlorobiphenyl

R.T.: 7.926 min  
Delta R.T.: 0.000 min  
Response: 39491654  
Conc: 20.85 ng/ml