

Data Path : Z:\pestpcbsrv\HPCHEM1\ECD_L\Data\PL081524\
 Data File : PL091141.D
 Signal(s) : Signal #1: ECD1A.ch Signal #2: ECD2B.ch
 Acq On : 16 Aug 2024 00:29
 Operator : AR\AJ
 Sample : I.BLK
 Misc :
 ALS Vial : 2 Sample Multiplier: 1

Instrument :
 ECD_L
 ClientSampleId :
 OK-01-081424

Integration File signal 1: autoint1.e
 Integration File signal 2: autoint2.e
 Quant Time: Aug 16 07:30:02 2024
 Quant Method : Z:\pestpcbsrv\HPCHEM1\ECD_L\methods\PL081324.M
 Quant Title : GC Extractables
 QLast Update : Wed Aug 14 13:09:19 2024
 Response via : Initial Calibration
 Integrator: ChemStation

Volume Inj. : 1 µl
 Signal #1 Phase : ZB-MR2 Signal #2 Phase: ZB-MR1
 Signal #1 Info : 30M x 0.32mm x0.2 Signal #2 Info : 30M x 0.32mm x0.5µm

Compound	RT#1	RT#2	Resp#1	Resp#2	ng/ml	ng/ml

System Monitoring Compounds						
1) SA Tetrachlo...	3.544	2.784	44431636	39751665	20.693	20.365
28) SA Decachlor...	9.057	7.925	35478039	41530229	23.271	21.926
Target Compounds						
2) A alpha-BHC	0.000	3.273f	0	70440	N.D.	0.025 #
3) MA gamma-BHC...	0.000	3.635f	0	751705	N.D.	0.285 #
4) MA Heptachlor	4.909	0.000	3269275	0	1.228	N.D. #
5) MB Aldrin	0.000	4.257f	0	1481845	N.D.	0.603 #
6) B beta-BHC	0.000	3.925	0	175704	N.D.	0.149 #
7) B delta-BHC	0.000	4.145	0	60858	N.D.	0.024 #
8) B Heptachlo...	5.685	0.000	5829753	0	2.383	N.D. #
10) B gamma-Chl...	0.000	4.994	0	879185	N.D.	0.372 #
11) B alpha-Chl...	0.000	5.050	0	309259	N.D.	0.131 #
13) MA Dieldrin	0.000	5.372	0	923366	N.D.	0.405 #
14) MA Endrin	0.000	5.668f	0	4200109	N.D.	2.062 #
16) A 4,4'-DDD	0.000	5.796	0	21311	N.D.	0.013 #
17) MA 4,4'-DDT	0.000	6.046	0	207976	N.D.	0.117 #
18) B Endrin al...	0.000	6.128	0	76250	N.D.	0.049 #
23) Chlordane-1	0.000	3.791	0	89875	N.D.	1.233 #
24) Chlordane-2	0.000	4.340f	0	8862476	N.D.	94.327 #
25) Chlordane-3	0.000	4.994	0	879185	N.D.	3.620 #
26) Chlordane-4	0.000	5.050	0	309259	N.D.	1.326 #
27) Chlordane-5	0.000	5.742f	0	190319	N.D.	2.749 #

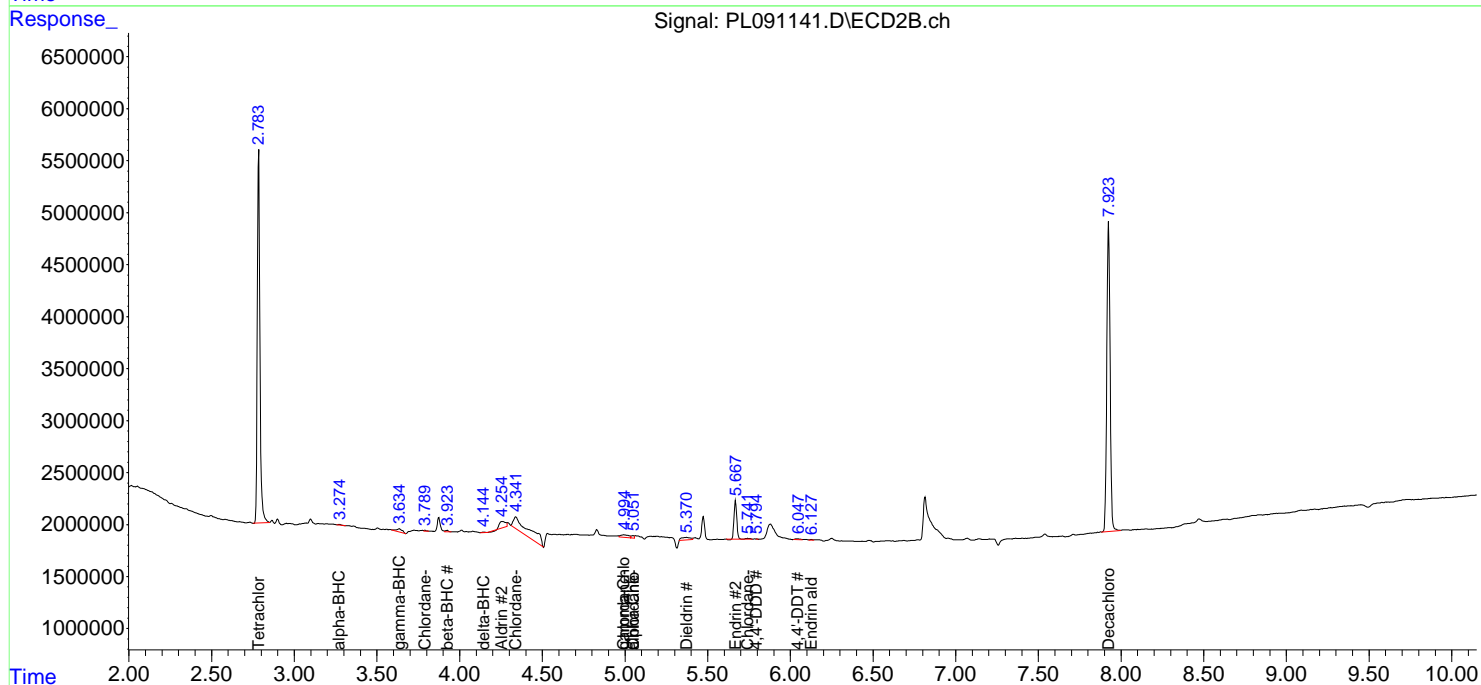
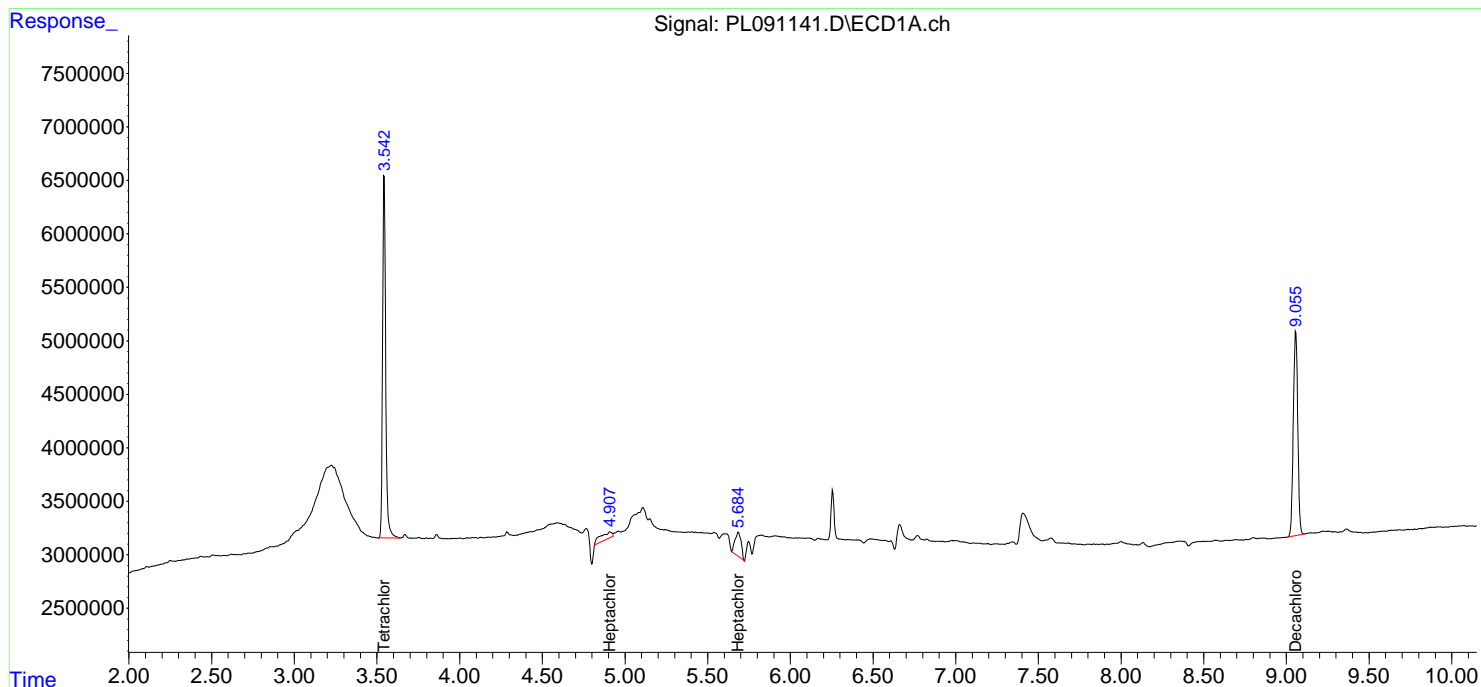
(f)=RT Delta > 1/2 Window (#)=Amounts differ by > 25% (m)=manual int.

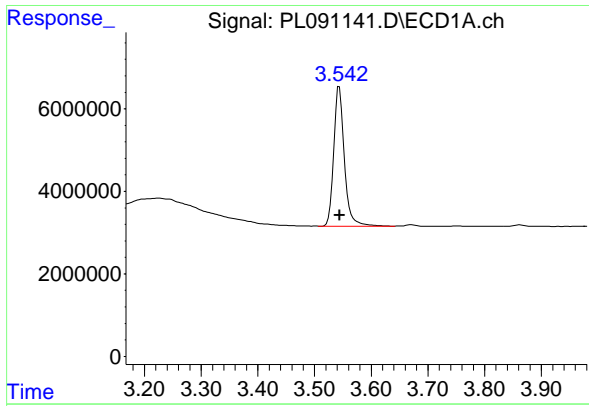
Data Path : Z:\pestpcbsrv\HPCHEM1\ECD_L\Data\PL081524\
 Data File : PL091141.D
 Signal(s) : Signal #1: ECD1A.ch Signal #2: ECD2B.ch
 Acq On : 16 Aug 2024 00:29
 Operator : AR\AJ
 Sample : I.BLK
 Misc :
 ALS Vial : 2 Sample Multiplier: 1

Instrument :
 ECD_L
 ClientSampleId :
 OK-01-081424

Integration File signal 1: autoint1.e
 Integration File signal 2: autoint2.e
 Quant Time: Aug 16 07:30:02 2024
 Quant Method : Z:\pestpcbsrv\HPCHEM1\ECD_L\methods\PL081324.M
 Quant Title : GC Extractables
 QLast Update : Wed Aug 14 13:09:19 2024
 Response via : Initial Calibration
 Integrator: ChemStation

Volume Inj. : 1 µl
 Signal #1 Phase : ZB-MR2 Signal #2 Phase: ZB-MR1
 Signal #1 Info : 30M x 0.32mm x0.2 Signal #2 Info : 30M x 0.32mm x0.5µm

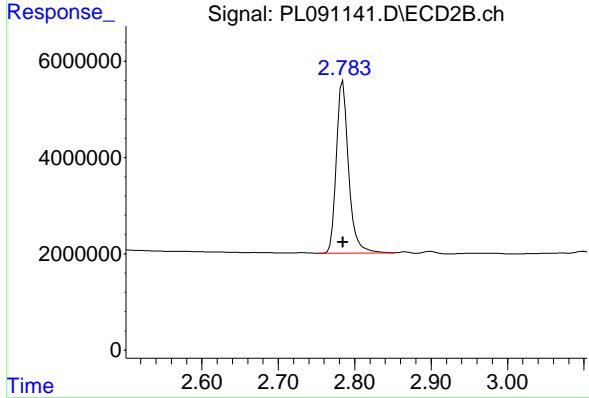




#1 Tetrachloro-m-xylene

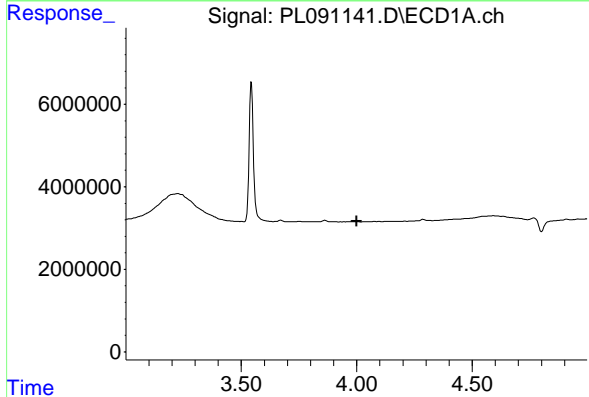
R.T.: 3.544 min
 Delta R.T.: 0.000 min
 Response: 44431636
 Conc: 20.69 ng/ml

Instrument : ECD_L
 ClientSampleId : OK-01-081424



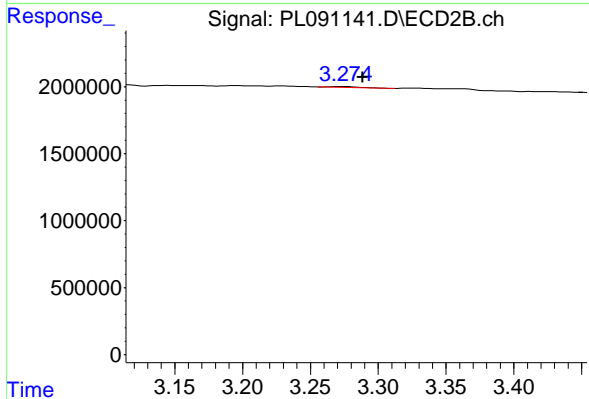
#1 Tetrachloro-m-xylene

R.T.: 2.784 min
 Delta R.T.: 0.000 min
 Response: 39751665
 Conc: 20.36 ng/ml



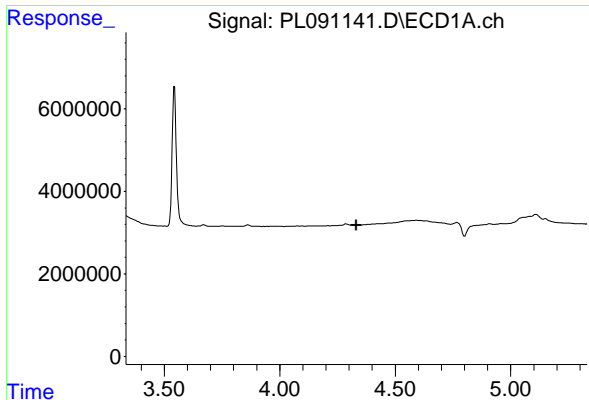
#2 alpha-BHC

R.T.: 0.000 min
 Exp R.T. : 3.999 min
 Response: 0
 Conc: N.D.



#2 alpha-BHC

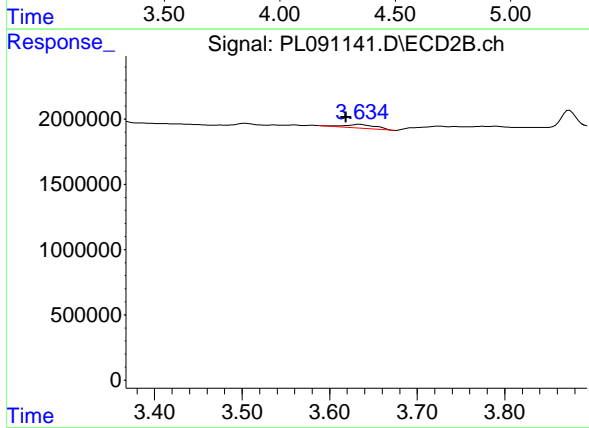
R.T.: 3.273 min
 Delta R.T.: -0.015 min
 Response: 70440
 Conc: 0.03 ng/ml



#3 gamma-BHC (Lindane)

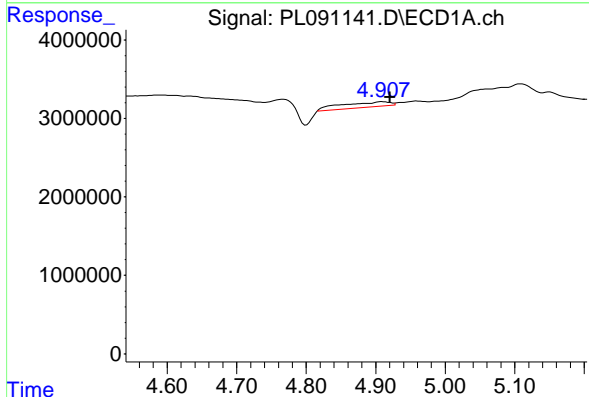
R.T.: 0.000 min
 Exp R.T. : 4.332 min
 Response: 0
 Conc: N.D.

Instrument : ECD_L
 ClientSampleId : OK-01-081424



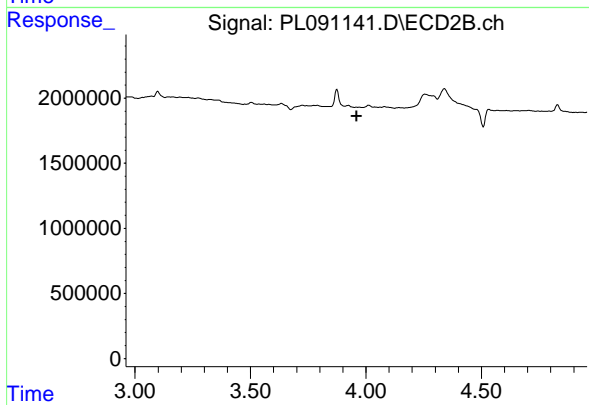
#3 gamma-BHC (Lindane)

R.T.: 3.635 min
 Delta R.T.: 0.017 min
 Response: 751705
 Conc: 0.29 ng/ml



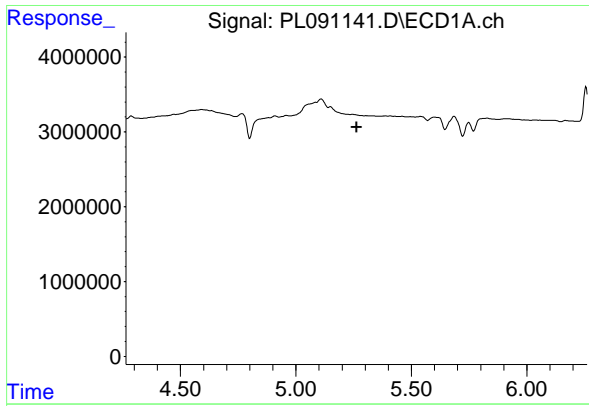
#4 Heptachlor

R.T.: 4.909 min
 Delta R.T.: -0.011 min
 Response: 3269275
 Conc: 1.23 ng/ml



#4 Heptachlor

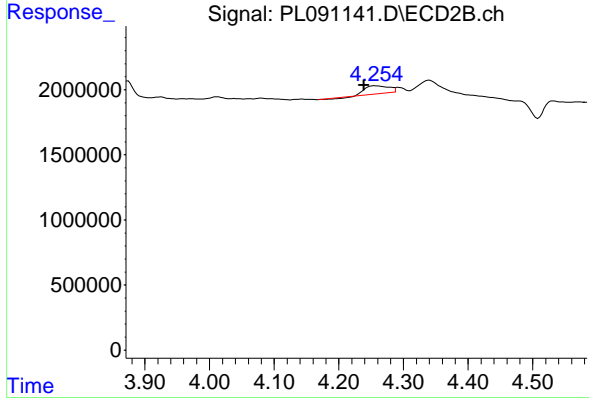
R.T.: 0.000 min
 Exp R.T. : 3.959 min
 Response: 0
 Conc: N.D.



#5 Aldrin

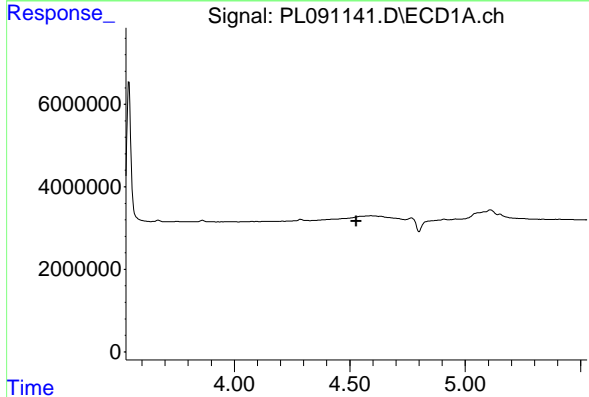
R.T.: 0.000 min
 Exp R.T.: 5.262 min
 Response: 0
 Conc: N.D.

Instrument :
 ECD_L
 ClientSampleId :
 OK-01-081424



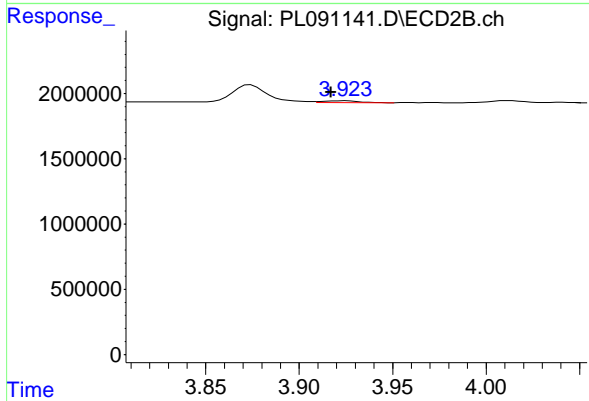
#5 Aldrin

R.T.: 4.257 min
 Delta R.T.: 0.018 min
 Response: 1481845
 Conc: 0.60 ng/ml



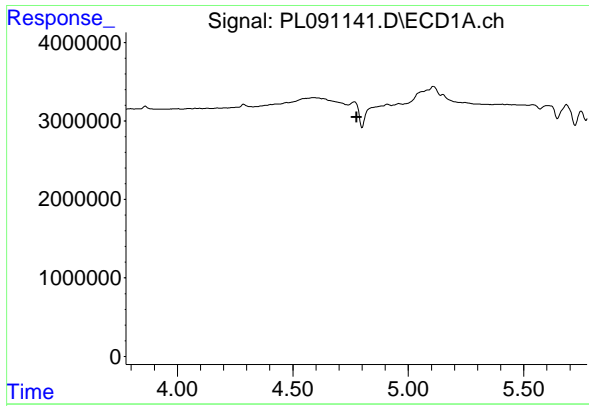
#6 beta-BHC

R.T.: 0.000 min
 Exp R.T.: 4.528 min
 Response: 0
 Conc: N.D.



#6 beta-BHC

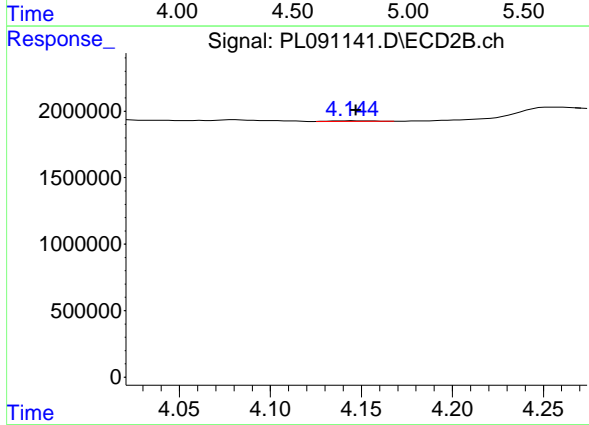
R.T.: 3.925 min
 Delta R.T.: 0.008 min
 Response: 175704
 Conc: 0.15 ng/ml



#7 delta-BHC

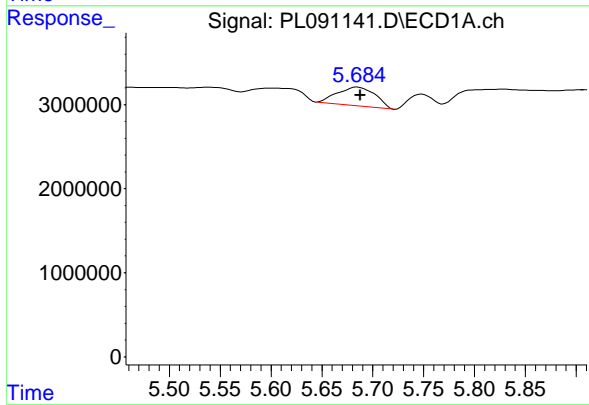
R.T.: 0.000 min
 Exp R.T.: 4.775 min
 Response: 0
 Conc: N.D.

Instrument :
 ECD_L
 ClientSampleId :
 OK-01-081424



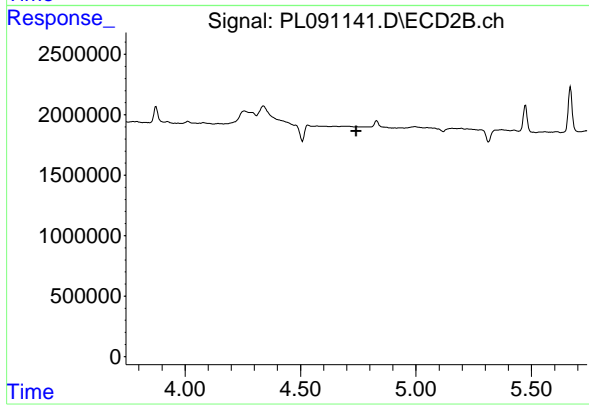
#7 delta-BHC

R.T.: 4.145 min
 Delta R.T.: -0.002 min
 Response: 60858
 Conc: 0.02 ng/ml



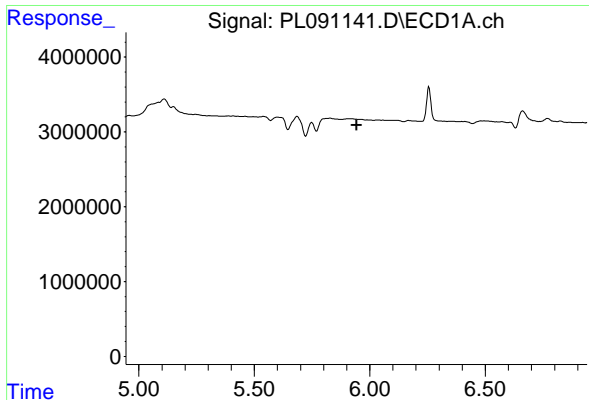
#8 Heptachlor epoxide

R.T.: 5.685 min
 Delta R.T.: -0.003 min
 Response: 5829753
 Conc: 2.38 ng/ml



#8 Heptachlor epoxide

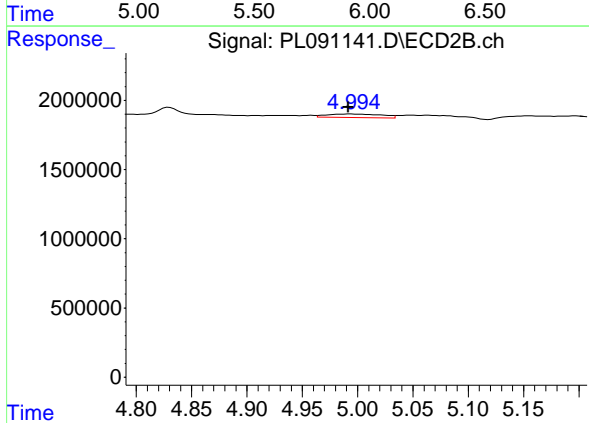
R.T.: 0.000 min
 Exp R.T.: 4.741 min
 Response: 0
 Conc: N.D.



#10 gamma-Chlordane

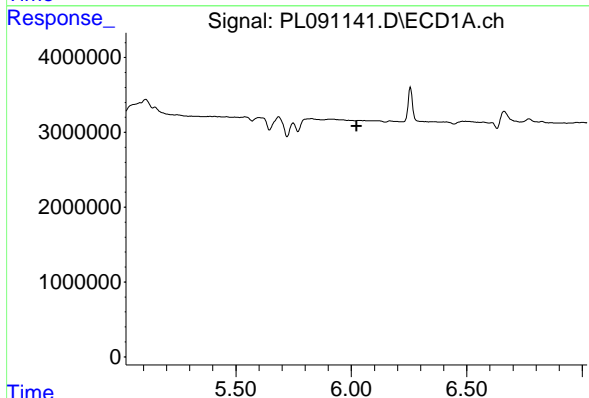
R.T.: 0.000 min
 Exp R.T.: 5.943 min
 Response: 0
 Conc: N.D.

Instrument :
 ECD_L
 ClientSampleId :
 OK-01-081424



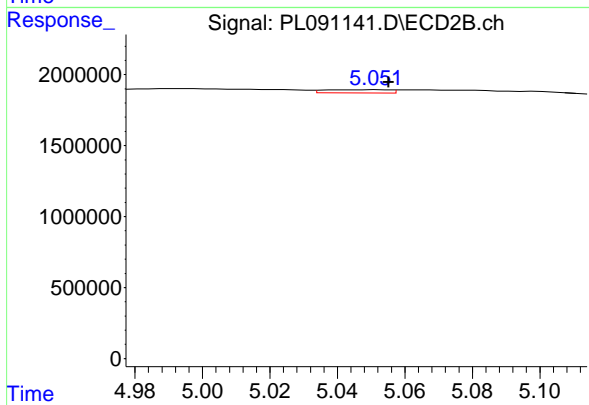
#10 gamma-Chlordane

R.T.: 4.994 min
 Delta R.T.: 0.002 min
 Response: 879185
 Conc: 0.37 ng/ml



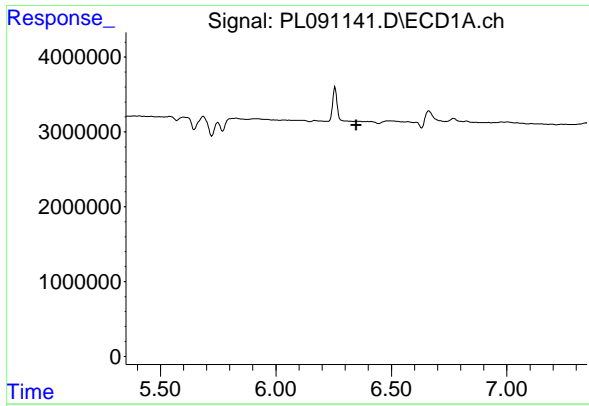
#11 alpha-Chlordane

R.T.: 0.000 min
 Exp R.T.: 6.022 min
 Response: 0
 Conc: N.D.



#11 alpha-Chlordane

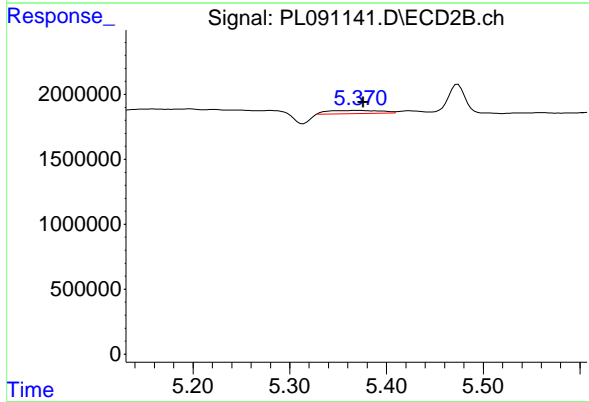
R.T.: 5.050 min
 Delta R.T.: -0.005 min
 Response: 309259
 Conc: 0.13 ng/ml



#13 Dieldrin

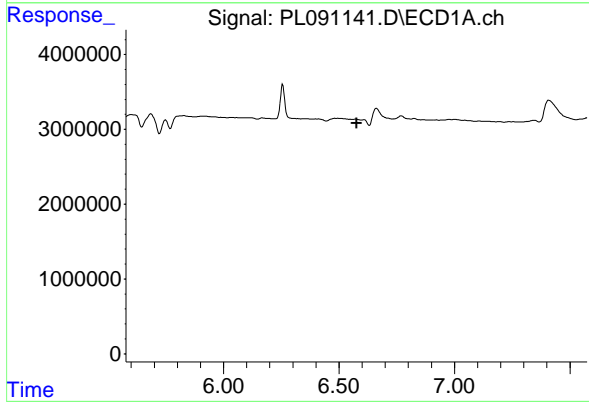
R.T.: 0.000 min
 Exp R.T. : 6.348 min
 Response: 0
 Conc: N.D.

Instrument :
 ECD_L
 ClientSampleId :
 OK-01-081424



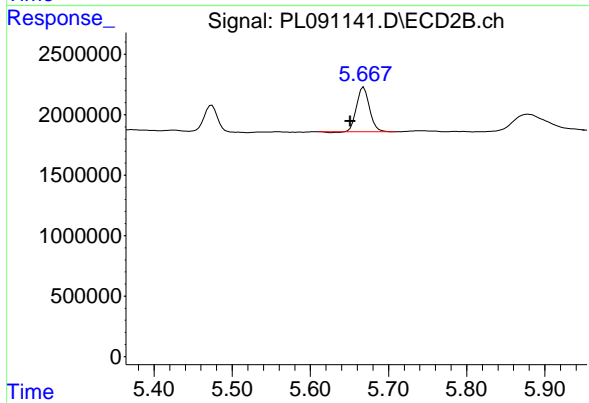
#13 Dieldrin

R.T.: 5.372 min
 Delta R.T.: -0.004 min
 Response: 923366
 Conc: 0.41 ng/ml



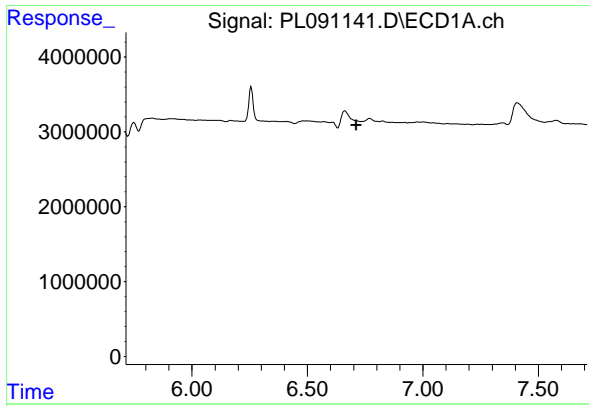
#14 Endrin

R.T.: 0.000 min
 Exp R.T. : 6.577 min
 Response: 0
 Conc: N.D.



#14 Endrin

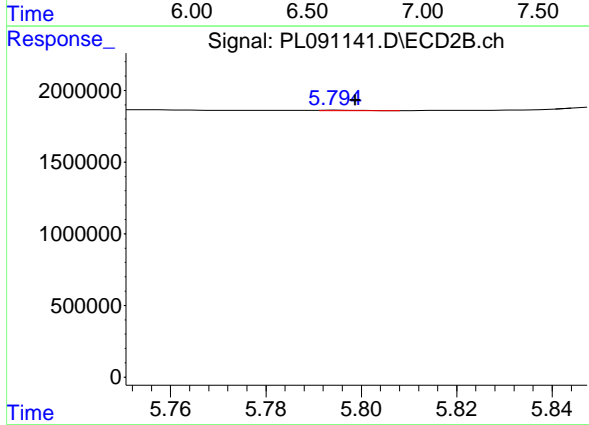
R.T.: 5.668 min
 Delta R.T.: 0.017 min
 Response: 4200109
 Conc: 2.06 ng/ml



#16 4,4'-DDD

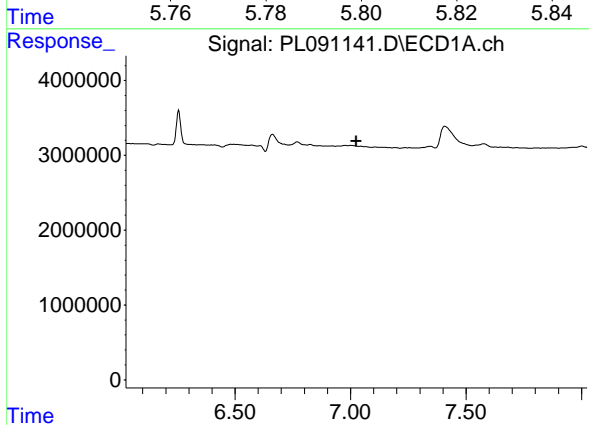
R.T.: 0.000 min
 Exp R.T.: 6.711 min
 Response: 0
 Conc: N.D.

Instrument :
 ECD_L
 ClientSampleId :
 OK-01-081424



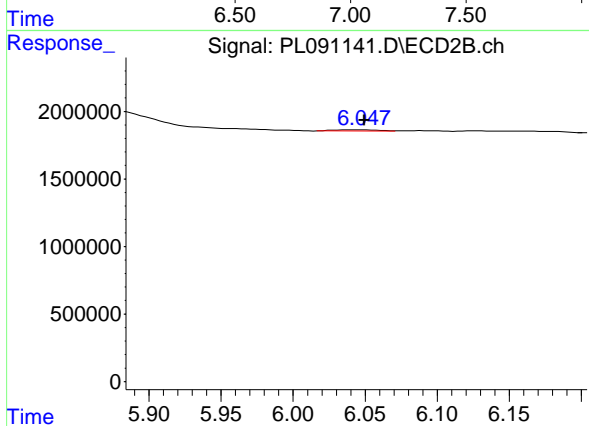
#16 4,4'-DDD

R.T.: 5.796 min
 Delta R.T.: -0.003 min
 Response: 21311
 Conc: 0.01 ng/ml



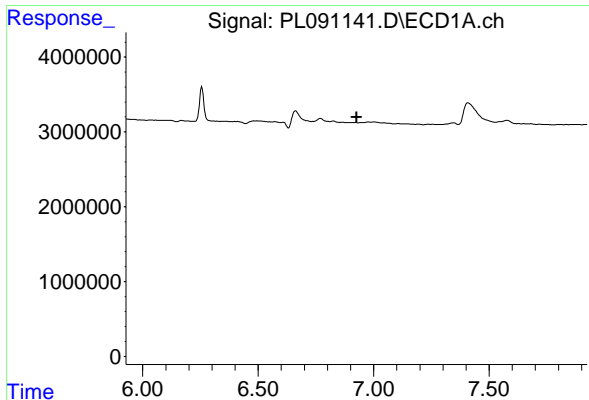
#17 4,4'-DDT

R.T.: 0.000 min
 Exp R.T.: 7.025 min
 Response: 0
 Conc: N.D.



#17 4,4'-DDT

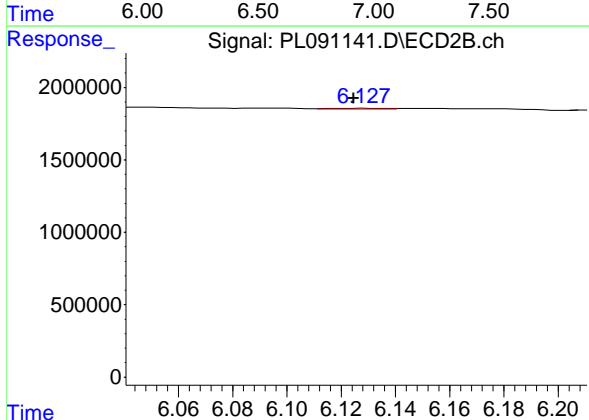
R.T.: 6.046 min
 Delta R.T.: -0.004 min
 Response: 207976
 Conc: 0.12 ng/ml



#18 Endrin aldehyde

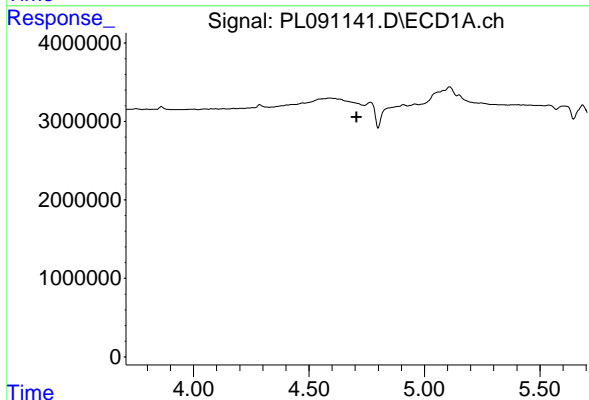
R.T.: 0.000 min
 Exp R.T.: 6.925 min
 Response: 0
 Conc: N.D.

Instrument : ECD_L
 ClientSampleId : OK-01-081424



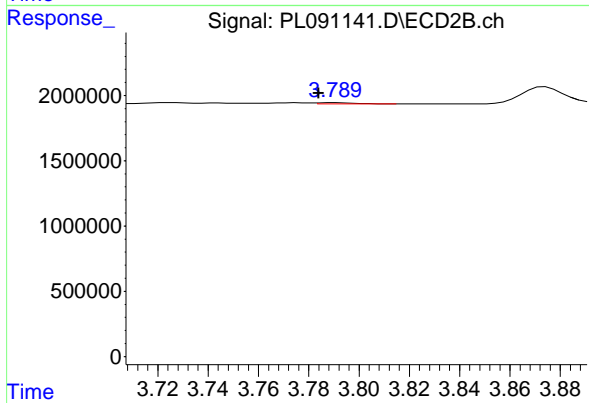
#18 Endrin aldehyde

R.T.: 6.128 min
 Delta R.T.: 0.004 min
 Response: 76250
 Conc: 0.05 ng/ml



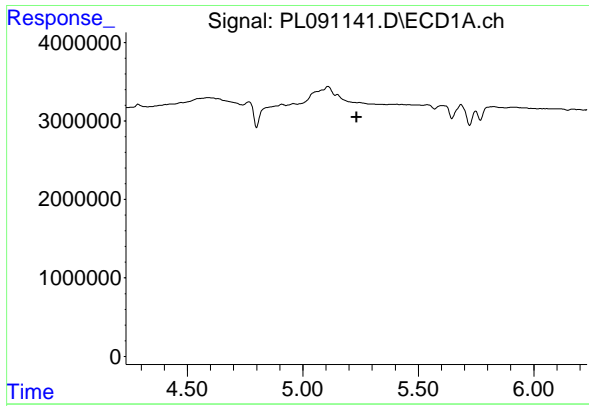
#23 Chlordane-1

R.T.: 0.000 min
 Exp R.T.: 4.706 min
 Response: 0
 Conc: N.D.



#23 Chlordane-1

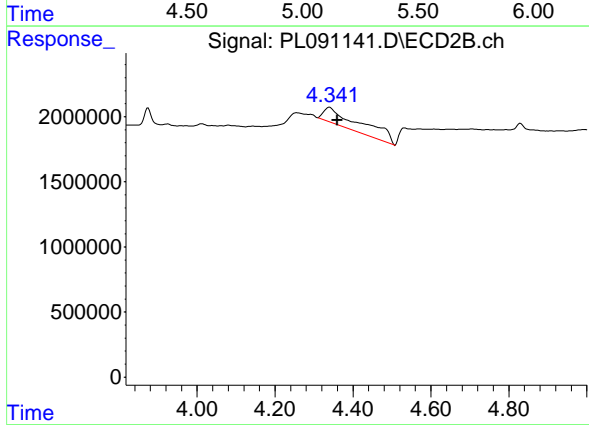
R.T.: 3.791 min
 Delta R.T.: 0.007 min
 Response: 89875
 Conc: 1.23 ng/ml



#24 Chlordane-2

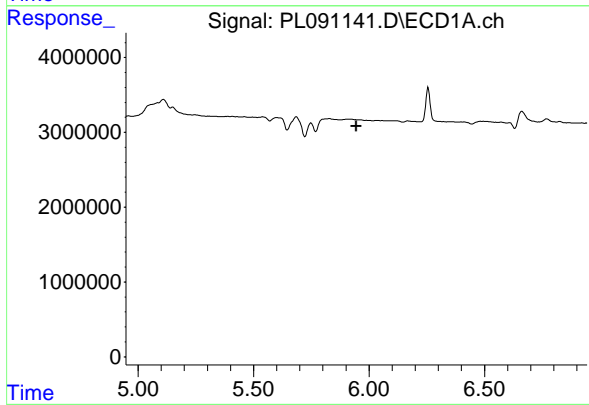
R.T.: 0.000 min
 Exp R.T.: 5.234 min
 Response: 0
 Conc: N.D.

Instrument :
 ECD_L
 ClientSampleId :
 OK-01-081424



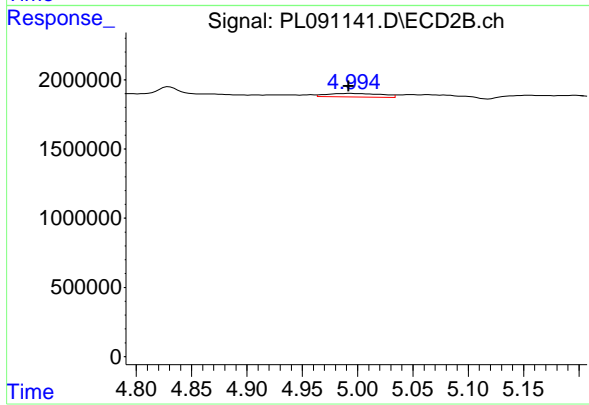
#24 Chlordane-2

R.T.: 4.340 min
 Delta R.T.: -0.021 min
 Response: 8862476
 Conc: 94.33 ng/ml



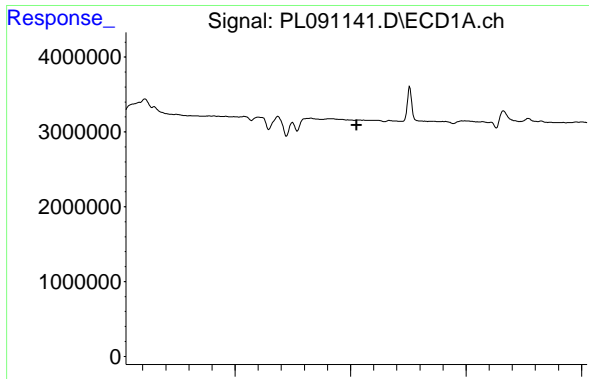
#25 Chlordane-3

R.T.: 0.000 min
 Exp R.T.: 5.944 min
 Response: 0
 Conc: N.D.



#25 Chlordane-3

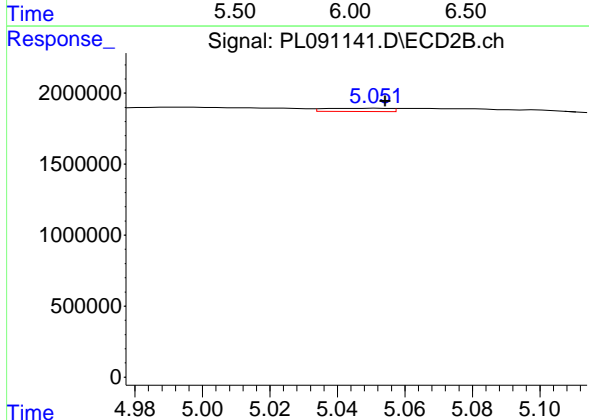
R.T.: 4.994 min
 Delta R.T.: 0.002 min
 Response: 879185
 Conc: 3.62 ng/ml



#26 Chlordane-4

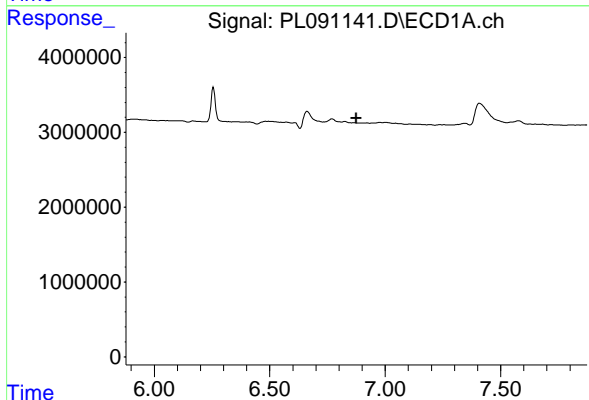
R.T.: 0.000 min
 Exp R.T.: 6.026 min
 Response: 0
 Conc: N.D.

Instrument : ECD_L
 ClientSampleId : OK-01-081424



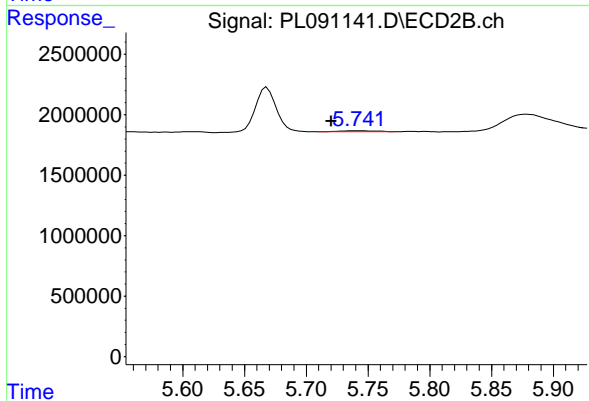
#26 Chlordane-4

R.T.: 5.050 min
 Delta R.T.: -0.004 min
 Response: 309259
 Conc: 1.33 ng/ml



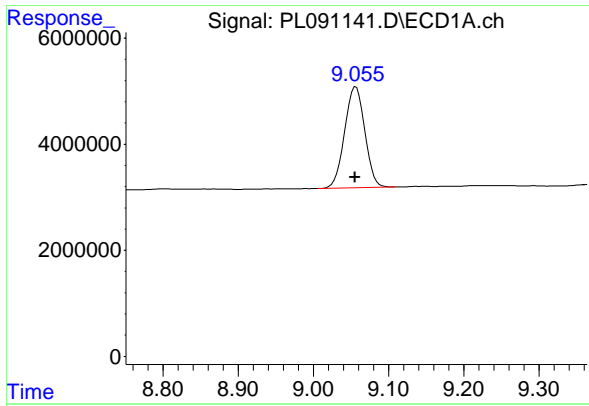
#27 Chlordane-5

R.T.: 0.000 min
 Exp R.T.: 6.875 min
 Response: 0
 Conc: N.D.



#27 Chlordane-5

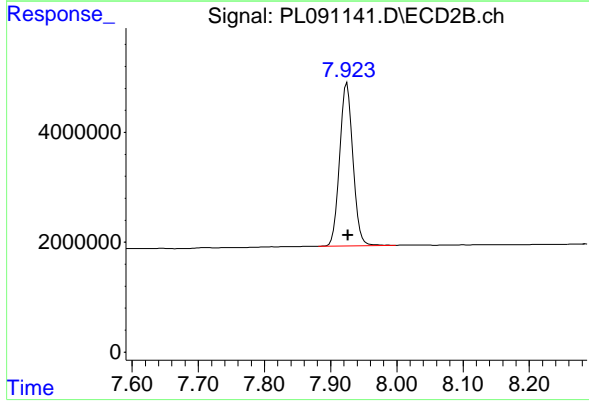
R.T.: 5.742 min
 Delta R.T.: 0.021 min
 Response: 190319
 Conc: 2.75 ng/ml



#28 Decachlorobiphenyl

R.T.: 9.057 min
 Delta R.T.: 0.001 min
 Response: 35478039
 Conc: 23.27 ng/ml

Instrument :
 ECD_L
 ClientSampleId :
 OK-01-081424



#28 Decachlorobiphenyl

R.T.: 7.925 min
 Delta R.T.: -0.001 min
 Response: 41530229
 Conc: 21.93 ng/ml