

Data Path : Z:\pestpcbsrv\HPCHEM1\ECD_L\Data\PL081619\
 Data File : PL051591.D
 Signal(s) : Signal #1: ECD1A.ch Signal #2: ECD2B.ch
 Acq On : 16 Aug 2019 18:13
 Operator : SG\AJ
 Sample : K4383-03MSD
 Misc :
 ALS Vial : 22 Sample Multiplier: 1

Instrument :
 ECD_L
 ClientSampleId :
 TP-1359MSD

Manual Integrations
 APPROVED

Ankita
 8/20/2019 10:42:58 AM

Integration File signal 1: autoint1.e
 Integration File signal 2: autoint2.e
 Quant Time: Aug 16 22:49:14 2019
 Quant Method : Z:\pestpcbsrv\HPCHEM1\ECD_L\methods\PL071719.M
 Quant Title : GC Extractables
 QLast Update : Fri Jul 19 01:19:13 2019
 Response via : Initial Calibration
 Integrator: ChemStation

Volume Inj. : 1 µl
 Signal #1 Phase : ZB-MR2 Signal #2 Phase: ZB-MR1
 Signal #1 Info : 30M x 0.32mm x0.2 Signal #2 Info : 30M x 0.32mm x0.5µm

	Compound	RT#1	RT#2	Resp#1	Resp#2	ng/ml	ng/ml

System Monitoring Compounds							
1)	SA Tetrachlo...	3.315	3.926	347.5E6	94723484	34.582	33.199
2)	SA Decachlor...	7.973	8.952	265.1E6	75537146	26.179	26.711
Target Compounds							
2)	A alpha-BHC	3.742	4.314	1392.2E6	338.8E6	83.077	82.120
3)	MA gamma-BHC...	4.017	4.597	1280.4E6	327.0E6	83.244	84.439
4)	MA Heptachlor	4.300	5.097	1359.8E6	334.6E6	82.874	80.699
5)	MB Aldrin	4.538	5.399	1290.4E6	319.6E6	83.300	84.816
6)	B beta-BHC	4.272	4.774	535.2E6	145.4E6	81.634	84.084
7)	B delta-BHC	4.464	4.987	1063.1E6	241.7E6	64.786	62.503
8)	B Heptachlo...	4.975	5.786	1143.2E6	285.3E6	77.382	74.598
9)	A Endosulfan I	5.304	6.141	1065.0E6	263.9E6	73.223	76.729
10)	B gamma-Chl...	5.197	6.019	1208.2E6	283.9E6	76.549	76.821
11)	B alpha-Chl...	5.252	6.091	1142.5E6	282.3E6	74.888	77.016
12)	B 4,4'-DDE	5.419	6.252	1118.0E6	281.3E6	74.603	78.066
13)	MA Dieldrin	5.543	6.397	1151.5E6	281.7E6	74.304	79.540
14)	MA Endrin	5.795	6.614	1026.9E6	234.1E6	69.757	75.489
15)	B Endosulfa...	6.071	6.827	881.8E6	235.5E6	63.008	74.074
16)	A 4,4'-DDD	5.930	6.741	846.0E6	208.6E6	70.597	78.322m
17)	MA 4,4'-DDT	6.164	7.039	808.5E6	209.7E6	65.277	77.675
18)	B Endrin al...	6.237	6.949	685.7E6	188.5E6	59.442	69.346m
19)	B Endosulfa...	6.449	7.173	807.8E6	218.8E6	63.411	75.766
20)	A Methoxychlor	6.708	7.500	408.1E6	113.9E6	65.411	77.596
21)	B Endrin ke...	6.930	7.641	855.2E6	230.6E6	62.523	79.766 #
22)	Mirex	7.103	8.090	590.1E6	167.6E6	60.185	72.964

(f)=RT Delta > 1/2 Window (#)=Amounts differ by > 25% (m)=manual int.

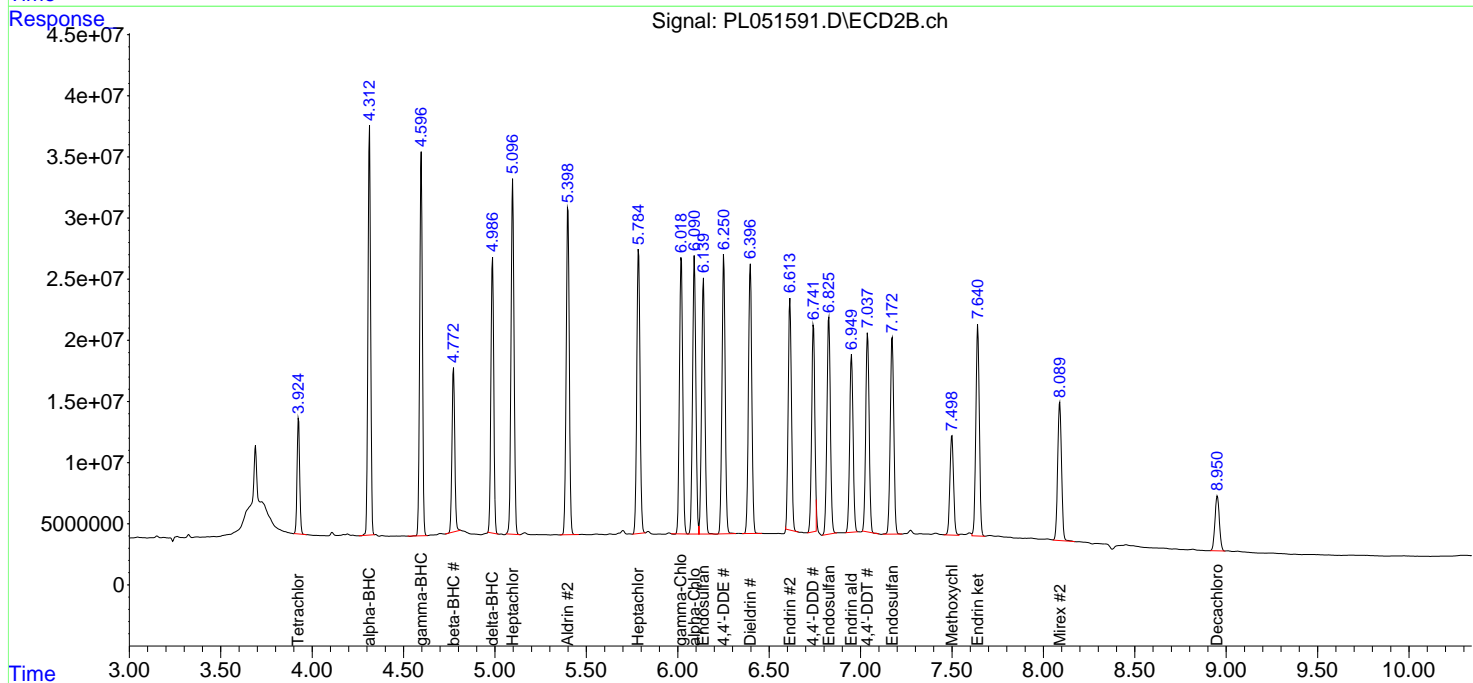
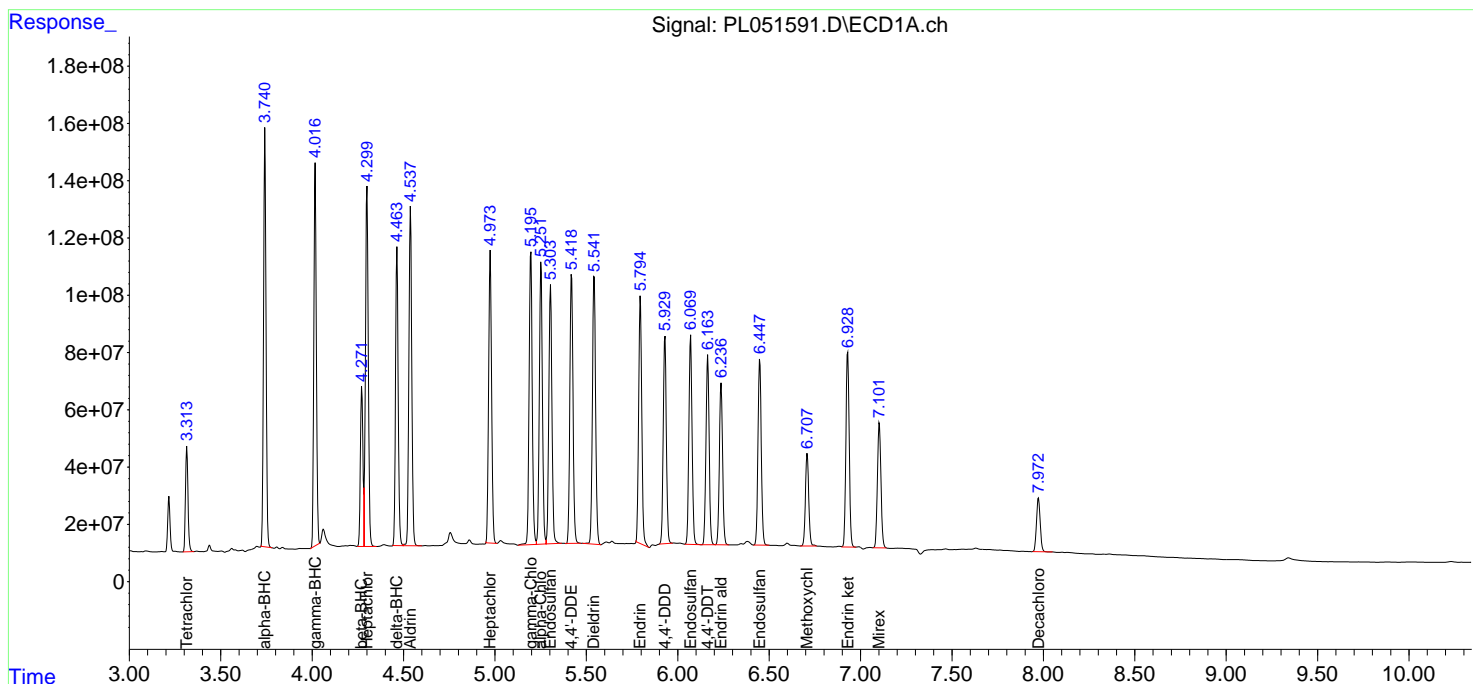
Data Path : Z:\pestpcbsrv\HPCHEM1\ECD_L\Data\PL081619\
 Data File : PL051591.D
 Signal(s) : Signal #1: ECD1A.ch Signal #2: ECD2B.ch
 Acq On : 16 Aug 2019 18:13
 Operator : SG\AJ
 Sample : K4383-03MSD
 Misc :
 ALS Vial : 22 Sample Multiplier: 1

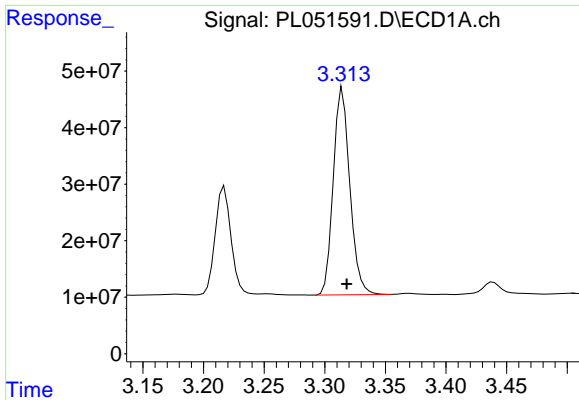
Instrument :
 ECD_L
 ClientSampled :
 TP-1359MSD

Manual Integrations
APPROVED
 Ankita
 8/20/2019 10:42:58 AM

Integration File signal 1: autoint1.e
 Integration File signal 2: autoint2.e
 Quant Time: Aug 16 22:49:14 2019
 Quant Method : Z:\pestpcbsrv\HPCHEM1\ECD_L\methods\PL071719.M
 Quant Title : GC Extractables
 QLast Update : Fri Jul 19 01:19:13 2019
 Response via : Initial Calibration
 Integrator: ChemStation

Volume Inj. : 1 µl
 Signal #1 Phase : ZB-MR2 Signal #2 Phase: ZB-MR1
 Signal #1 Info : 30M x 0.32mm x0.2 Signal #2 Info : 30M x 0.32mm x0.5µm

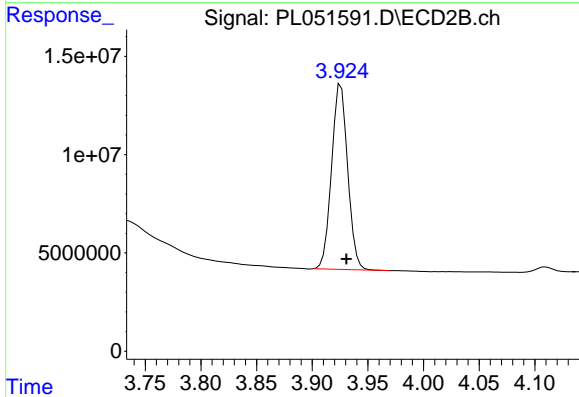




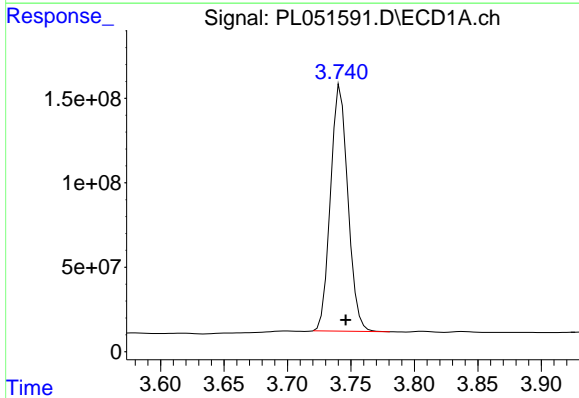
#1 Tetrachloro-m-xylene
R.T.: 3.315 min
Delta R.T.: -0.003 min
Response: 347476813
Conc: 34.58 ng/ml

Instrument :
ECD_L
ClientSampled :
TP-1359MSD

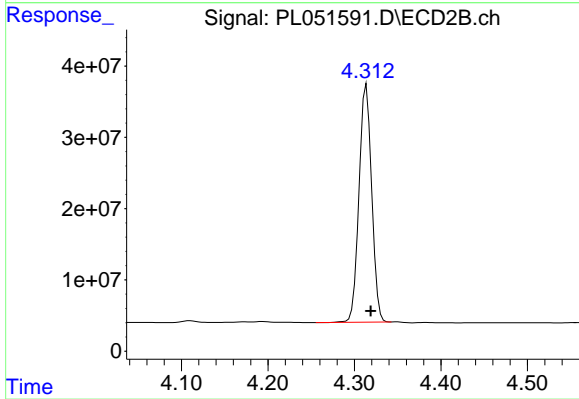
Manual Integrations
APPROVED
Ankita
8/20/2019 10:42:58 AM



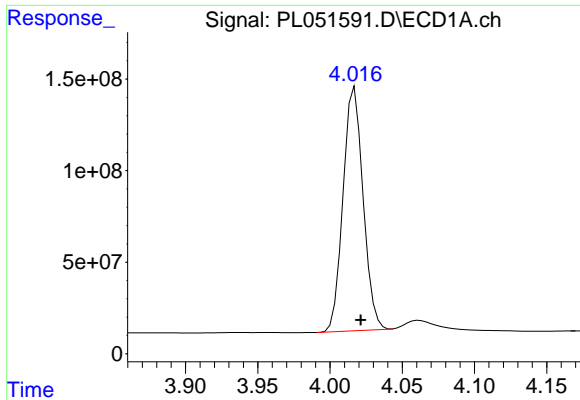
#1 Tetrachloro-m-xylene
R.T.: 3.926 min
Delta R.T.: -0.005 min
Response: 94723484
Conc: 33.20 ng/ml



#2 alpha-BHC
R.T.: 3.742 min
Delta R.T.: -0.004 min
Response: 1392177750
Conc: 83.08 ng/ml



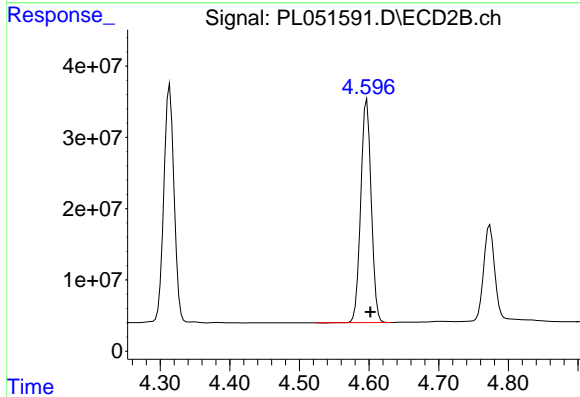
#2 alpha-BHC
R.T.: 4.314 min
Delta R.T.: -0.005 min
Response: 338827231
Conc: 82.12 ng/ml



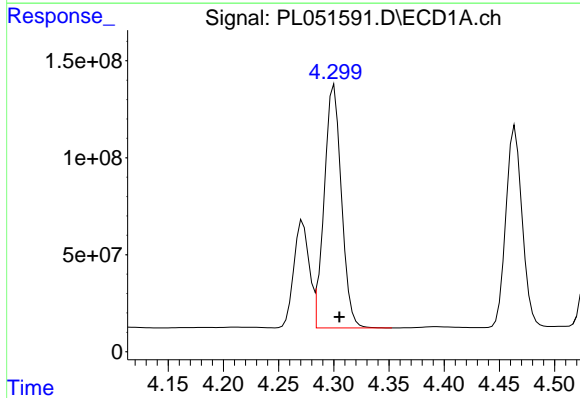
#3 gamma-BHC (Lindane)
 R.T.: 4.017 min
 Delta R.T.: -0.004 min
 Response: 1280431073
 Conc: 83.24 ng/ml

Instrument :
 ECD_L
 ClientSampled :
 TP-1359MSD

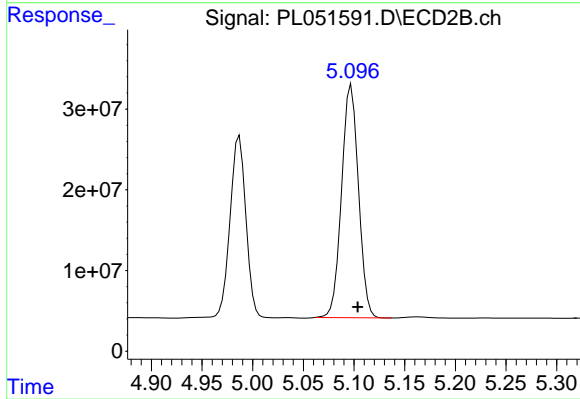
Manual Integrations
 APPROVED
 Ankita
 8/20/2019 10:42:58 AM



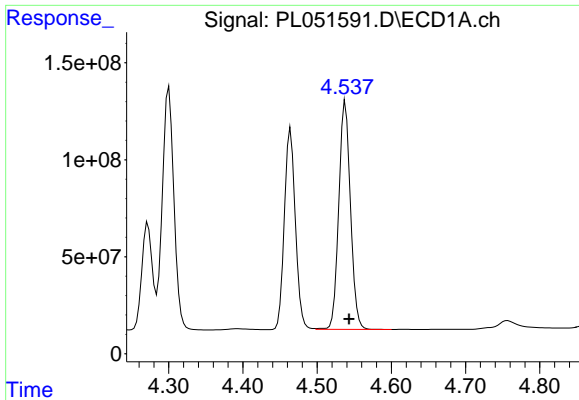
#3 gamma-BHC (Lindane)
 R.T.: 4.597 min
 Delta R.T.: -0.005 min
 Response: 327048557
 Conc: 84.44 ng/ml



#4 Heptachlor
 R.T.: 4.300 min
 Delta R.T.: -0.005 min
 Response: 1359778198
 Conc: 82.87 ng/ml



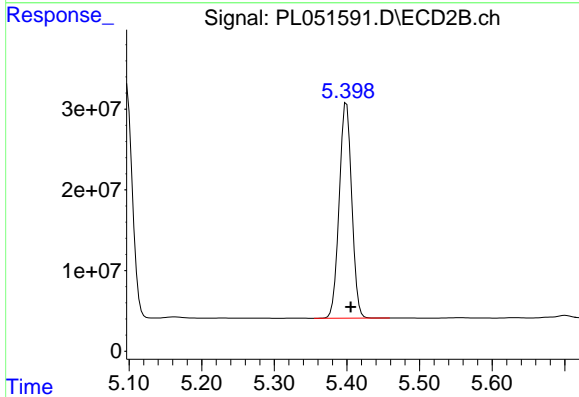
#4 Heptachlor
 R.T.: 5.097 min
 Delta R.T.: -0.006 min
 Response: 334633445
 Conc: 80.70 ng/ml



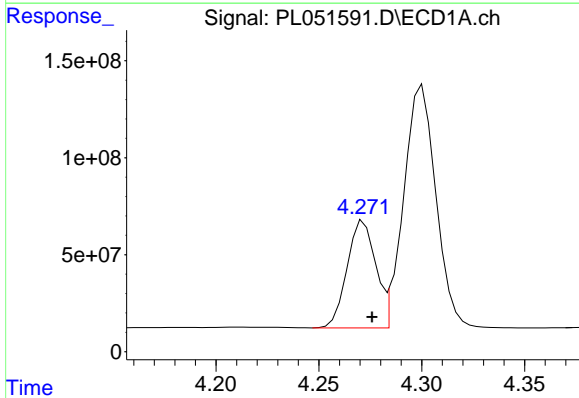
#5 Aldrin
 R.T.: 4.538 min
 Delta R.T.: -0.005 min
 Response: 1290448288
 Conc: 83.30 ng/ml

Instrument :
 ECD_L
ClientSampled :
 TP-1359MSD

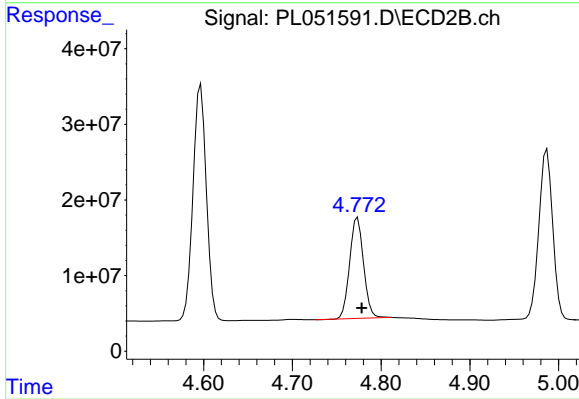
Manual Integrations
APPROVED
 Ankita
 8/20/2019 10:42:58 AM



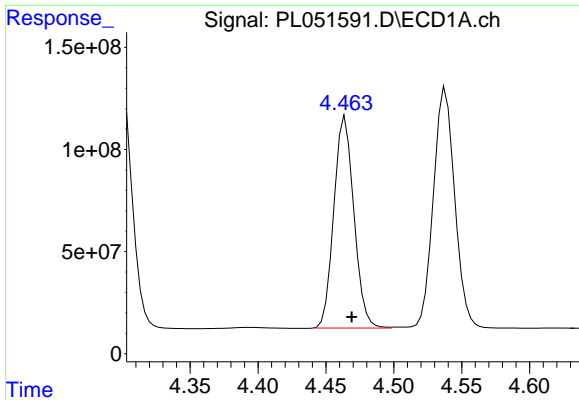
#5 Aldrin
 R.T.: 5.399 min
 Delta R.T.: -0.006 min
 Response: 319616951
 Conc: 84.82 ng/ml



#6 beta-BHC
 R.T.: 4.272 min
 Delta R.T.: -0.004 min
 Response: 535180083
 Conc: 81.63 ng/ml



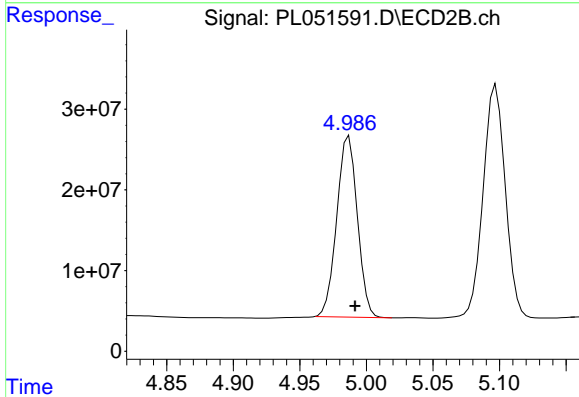
#6 beta-BHC
 R.T.: 4.774 min
 Delta R.T.: -0.005 min
 Response: 145368675
 Conc: 84.08 ng/ml



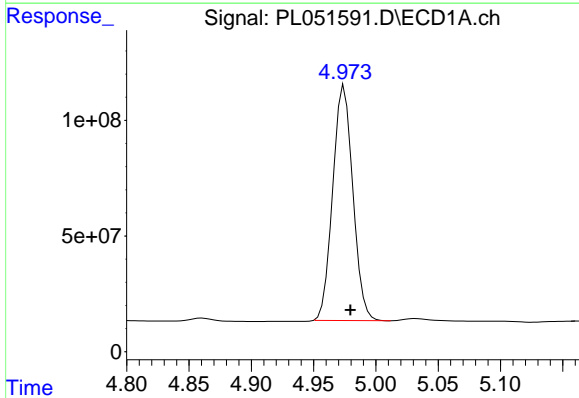
#7 delta-BHC
R.T.: 4.464 min
Delta R.T.: -0.005 min
Response: 1063053102
Conc: 64.79 ng/ml

Instrument :
ECD_L
ClientSampled :
TP-1359MSD

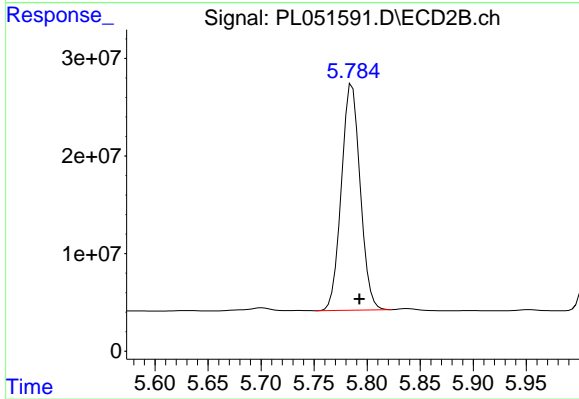
Manual Integrations
APPROVED
Ankita
8/20/2019 10:42:58 AM



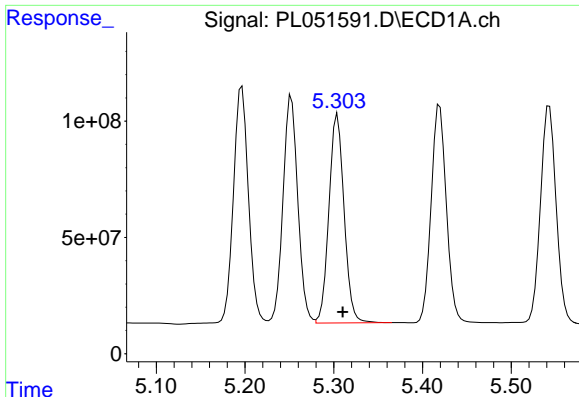
#7 delta-BHC
R.T.: 4.987 min
Delta R.T.: -0.005 min
Response: 241738539
Conc: 62.50 ng/ml



#8 Heptachlor epoxide
R.T.: 4.975 min
Delta R.T.: -0.005 min
Response: 1143223431
Conc: 77.38 ng/ml



#8 Heptachlor epoxide
R.T.: 5.786 min
Delta R.T.: -0.007 min
Response: 285323476
Conc: 74.60 ng/ml



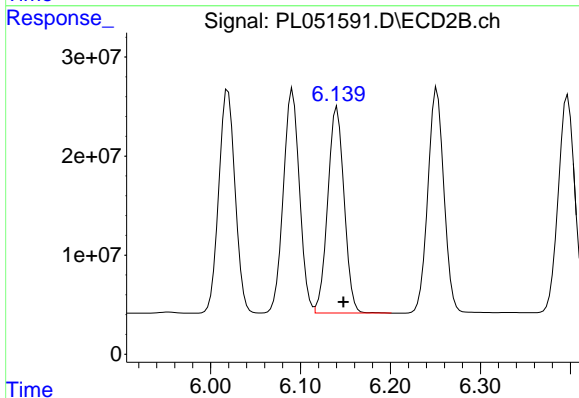
#9 Endosulfan I

R.T.: 5.304 min
Delta R.T.: -0.006 min
Response: 1064951136
Conc: 73.22 ng/ml

Instrument :
ECD_L
ClientSampled :
TP-1359MSD

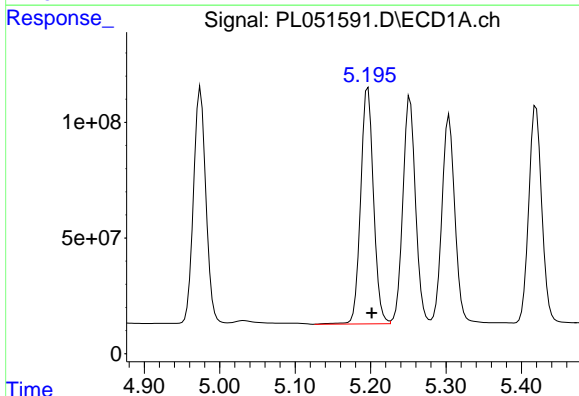
Manual Integrations
APPROVED

Ankita
8/20/2019 10:42:58 AM



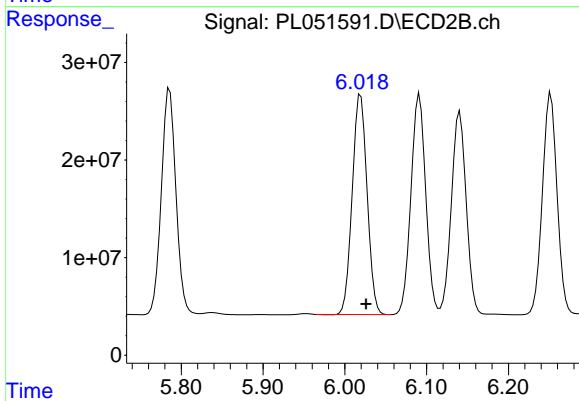
#9 Endosulfan I

R.T.: 6.141 min
Delta R.T.: -0.007 min
Response: 263861946
Conc: 76.73 ng/ml



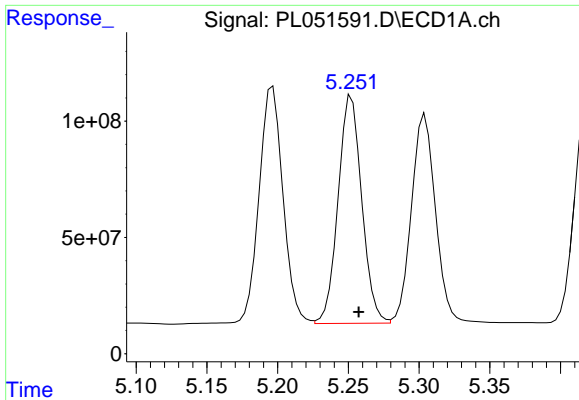
#10 gamma-Chlordane

R.T.: 5.197 min
Delta R.T.: -0.005 min
Response: 1208190137
Conc: 76.55 ng/ml



#10 gamma-Chlordane

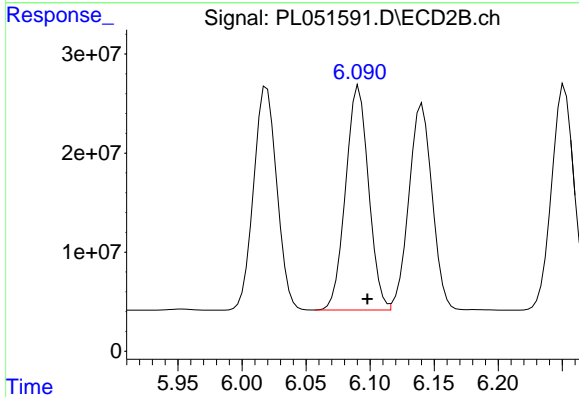
R.T.: 6.019 min
Delta R.T.: -0.007 min
Response: 283875975
Conc: 76.82 ng/ml



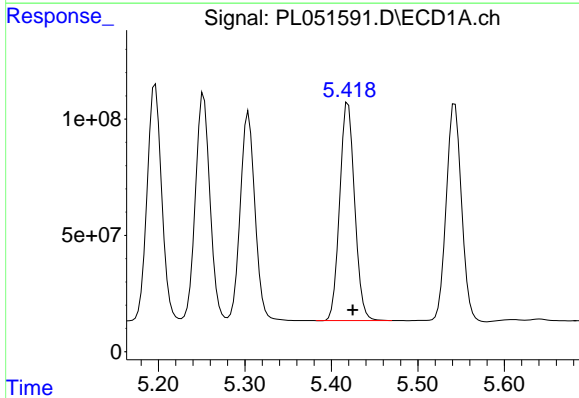
#11 alpha-Chlordane
 R.T.: 5.252 min
 Delta R.T.: -0.005 min
 Response: 1142490176
 Conc: 74.89 ng/ml

Instrument :
 ECD_L
 ClientSampled :
 TP-1359MSD

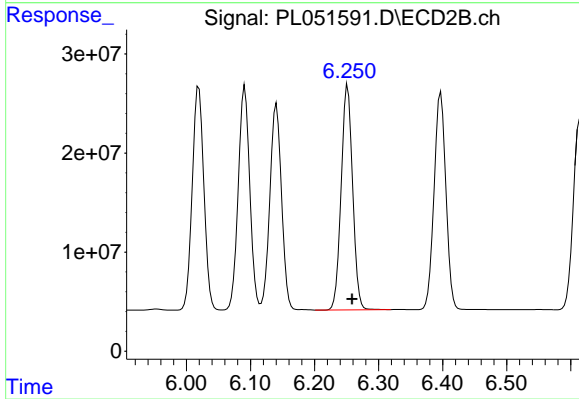
Manual Integrations
 APPROVED
 Ankita
 8/20/2019 10:42:58 AM



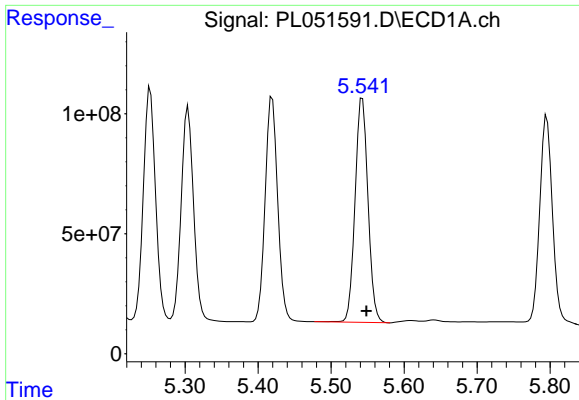
#11 alpha-Chlordane
 R.T.: 6.091 min
 Delta R.T.: -0.007 min
 Response: 282275529
 Conc: 77.02 ng/ml



#12 4,4'-DDE
 R.T.: 5.419 min
 Delta R.T.: -0.005 min
 Response: 1117990565
 Conc: 74.60 ng/ml



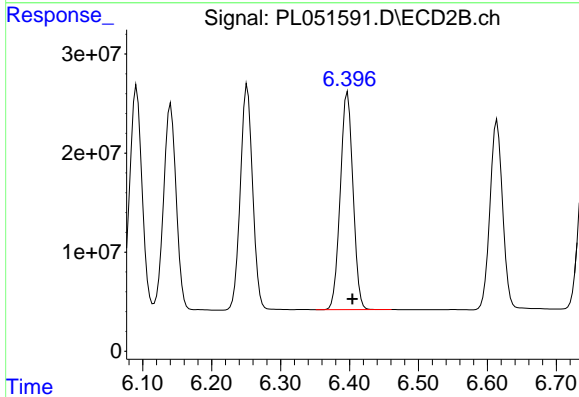
#12 4,4'-DDE
 R.T.: 6.252 min
 Delta R.T.: -0.007 min
 Response: 281303573
 Conc: 78.07 ng/ml



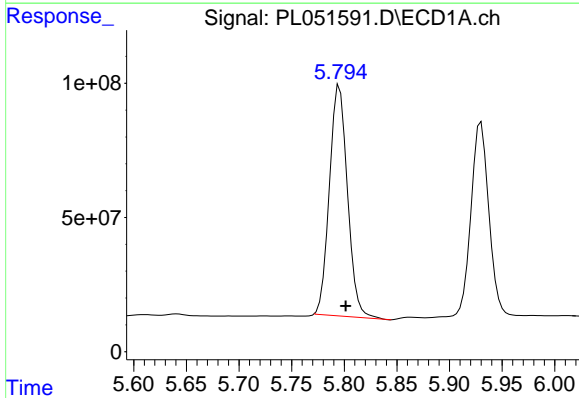
#13 Dieldrin
 R.T.: 5.543 min
 Delta R.T.: -0.006 min
 Response: 1151475539
 Conc: 74.30 ng/ml

Instrument :
 ECD_L
 ClientSampled :
 TP-1359MSD

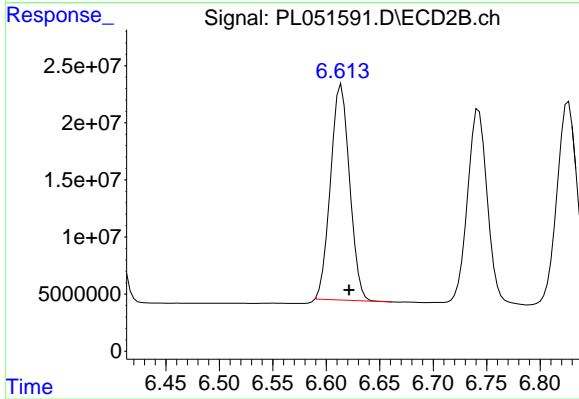
Manual Integrations
APPROVED
 Ankita
 8/20/2019 10:42:58 AM



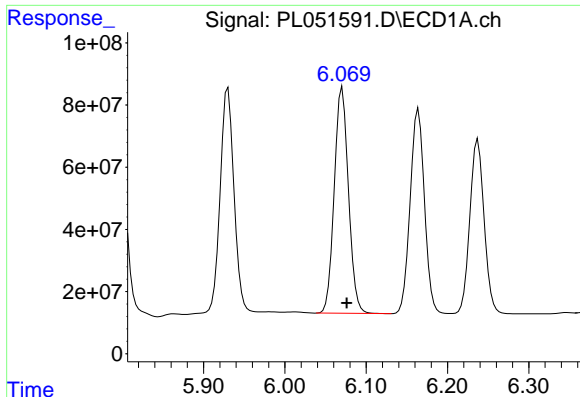
#13 Dieldrin
 R.T.: 6.397 min
 Delta R.T.: -0.007 min
 Response: 281662994
 Conc: 79.54 ng/ml



#14 Endrin
 R.T.: 5.795 min
 Delta R.T.: -0.006 min
 Response: 1026853271
 Conc: 69.76 ng/ml



#14 Endrin
 R.T.: 6.614 min
 Delta R.T.: -0.007 min
 Response: 234124938
 Conc: 75.49 ng/ml



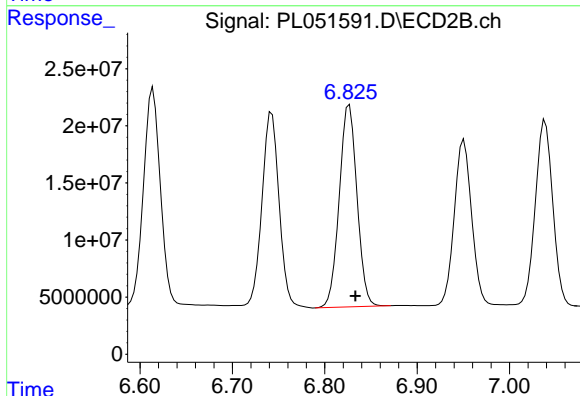
#15 Endosulfan II

R.T.: 6.071 min
 Delta R.T.: -0.006 min
 Response: 881797989
 Conc: 63.01 ng/ml

Instrument :
 ECD_L
 ClientSampled :
 TP-1359MSD

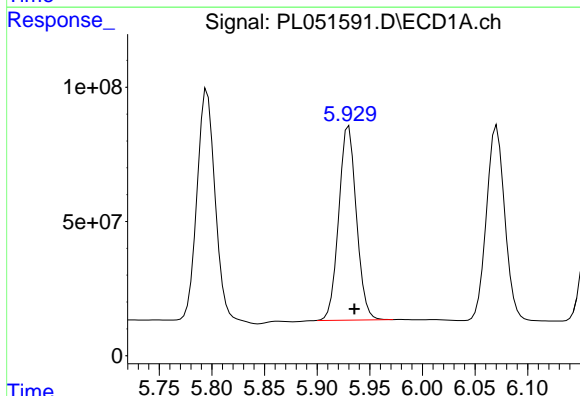
Manual Integrations
 APPROVED

Ankita
 8/20/2019 10:42:58 AM



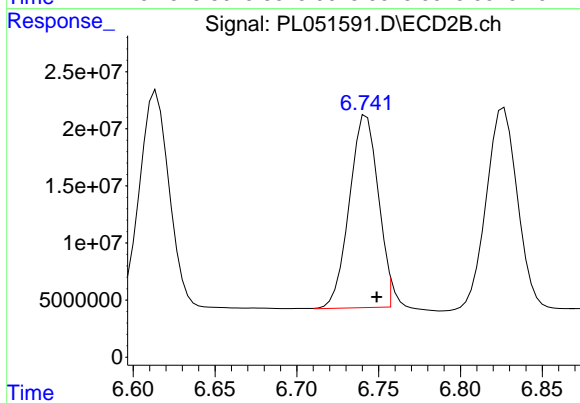
#15 Endosulfan II

R.T.: 6.827 min
 Delta R.T.: -0.007 min
 Response: 235494083
 Conc: 74.07 ng/ml



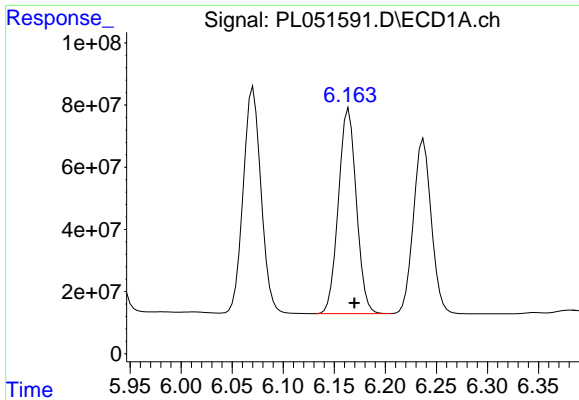
#16 4,4'-DDD

R.T.: 5.930 min
 Delta R.T.: -0.005 min
 Response: 846018824
 Conc: 70.60 ng/ml



#16 4,4'-DDD

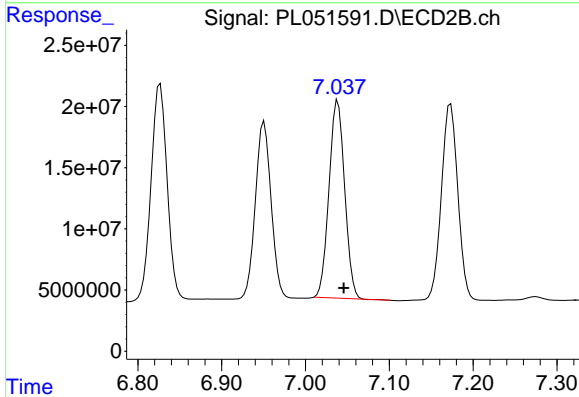
R.T.: 6.741 min
 Delta R.T.: -0.008 min
 Response: 208561680
 Conc: 78.32 ng/ml m



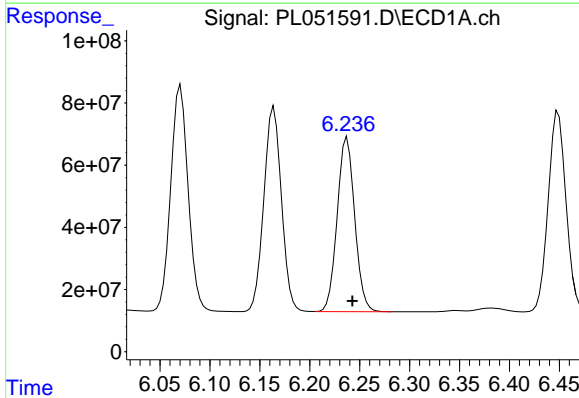
#17 4,4'-DDT
 R.T.: 6.164 min
 Delta R.T.: -0.005 min
 Response: 808505457
 Conc: 65.28 ng/ml

Instrument :
 ECD_L
ClientSampled :
 TP-1359MSD

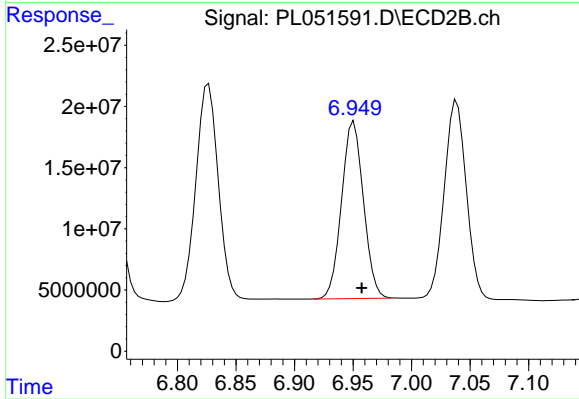
Manual Integrations
APPROVED
 Ankita
 8/20/2019 10:42:58 AM



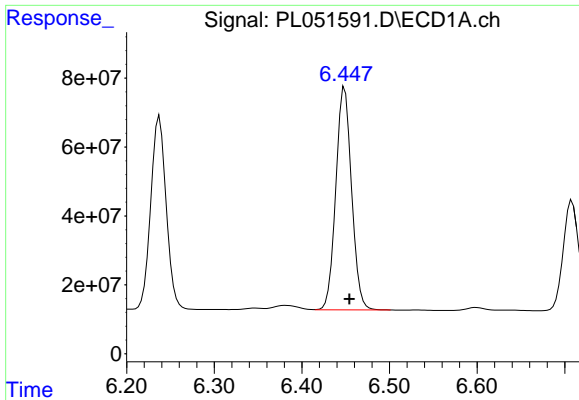
#17 4,4'-DDT
 R.T.: 7.039 min
 Delta R.T.: -0.007 min
 Response: 209691634
 Conc: 77.68 ng/ml



#18 Endrin aldehyde
 R.T.: 6.237 min
 Delta R.T.: -0.005 min
 Response: 685748196
 Conc: 59.44 ng/ml



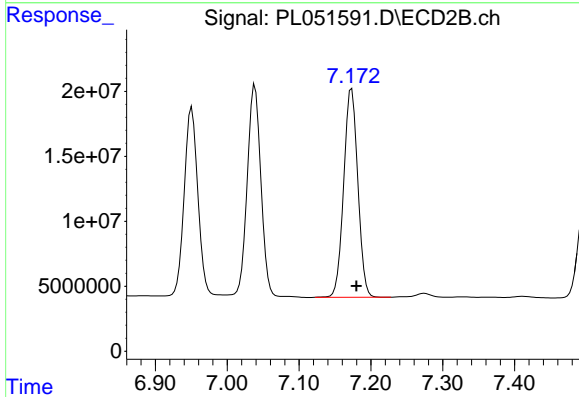
#18 Endrin aldehyde
 R.T.: 6.949 min
 Delta R.T.: -0.008 min
 Response: 188454532
 Conc: 69.35 ng/ml m



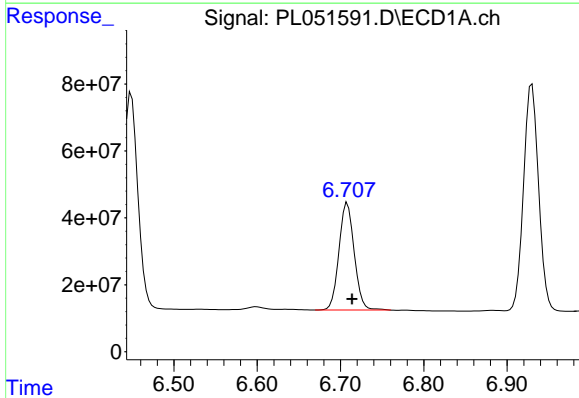
#19 Endosulfan Sulfate
 R.T.: 6.449 min
 Delta R.T.: -0.005 min
 Response: 807821737
 Conc: 63.41 ng/ml

Instrument :
 ECD_L
ClientSampled :
 TP-1359MSD

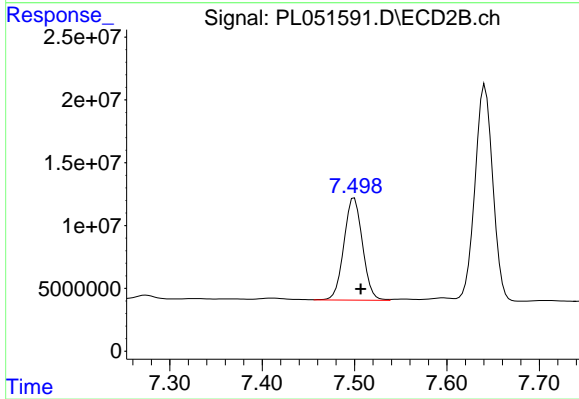
Manual Integrations
APPROVED
 Ankita
 8/20/2019 10:42:58 AM



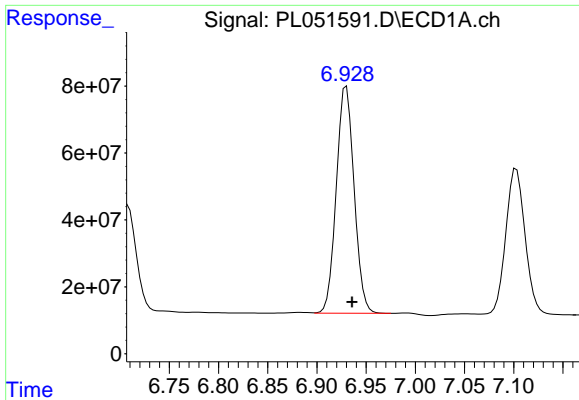
#19 Endosulfan Sulfate
 R.T.: 7.173 min
 Delta R.T.: -0.007 min
 Response: 218830110
 Conc: 75.77 ng/ml



#20 Methoxychlor
 R.T.: 6.708 min
 Delta R.T.: -0.006 min
 Response: 408094882
 Conc: 65.41 ng/ml



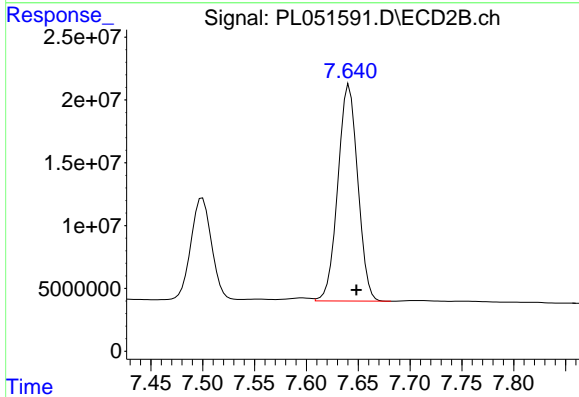
#20 Methoxychlor
 R.T.: 7.500 min
 Delta R.T.: -0.007 min
 Response: 113854266
 Conc: 77.60 ng/ml



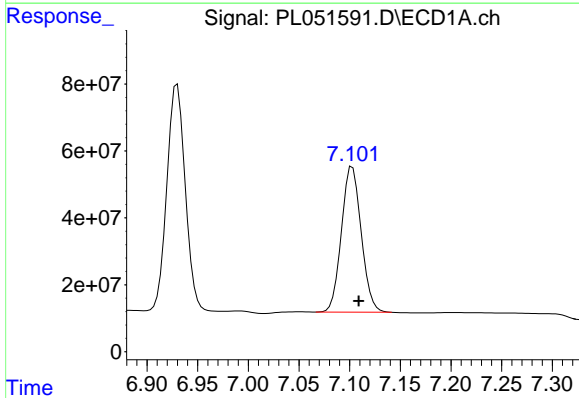
#21 Endrin ketone
 R.T.: 6.930 min
 Delta R.T.: -0.006 min
 Response: 855155435
 Conc: 62.52 ng/ml

Instrument :
 ECD_L
 ClientSampled :
 TP-1359MSD

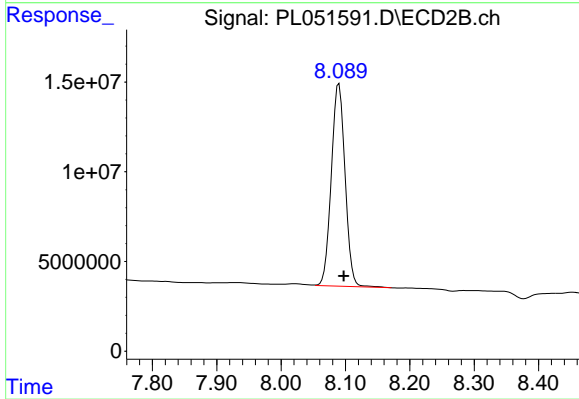
Manual Integrations
APPROVED
 Ankita
 8/20/2019 10:42:58 AM



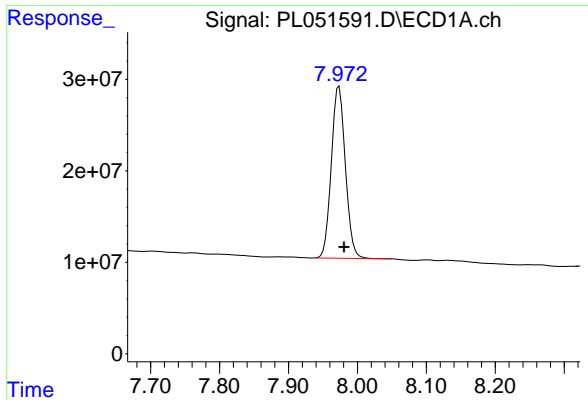
#21 Endrin ketone
 R.T.: 7.641 min
 Delta R.T.: -0.007 min
 Response: 230626111
 Conc: 79.77 ng/ml



#22 Mirex
 R.T.: 7.103 min
 Delta R.T.: -0.006 min
 Response: 590071632
 Conc: 60.18 ng/ml



#22 Mirex
 R.T.: 8.090 min
 Delta R.T.: -0.007 min
 Response: 167598655
 Conc: 72.96 ng/ml



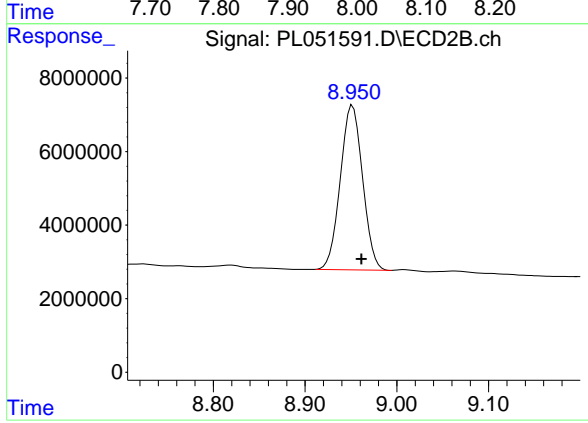
#28 Decachlorobiphenyl

R.T.: 7.973 min
Delta R.T.: -0.007 min
Response: 265067098
Conc: 26.18 ng/ml

Instrument :
ECD_L
ClientSampled :
TP-1359MSD

Manual Integrations
APPROVED

Ankita
8/20/2019 10:42:58 AM



#28 Decachlorobiphenyl

R.T.: 8.952 min
Delta R.T.: -0.010 min
Response: 75537146
Conc: 26.71 ng/ml