

Data Path : Z:\pestpcbsrv\HPCHEM1\ECD_L\Data\PL081619\
 Data File : PL051600.D
 Signal(s) : Signal #1: ECD1A.ch Signal #2: ECD2B.ch
 Acq On : 16 Aug 2019 20:21
 Operator : SG\AJ
 Sample : K4090-12
 Misc :
 ALS Vial : 31 Sample Multiplier: 1

Instrument :
 ECD_L
 ClientSampleId :
 OR-02-081519

Integration File signal 1: autoint1.e
 Integration File signal 2: autoint2.e
 Quant Time: Aug 16 22:51:15 2019
 Quant Method : Z:\pestpcbsrv\HPCHEM1\ECD_L\methods\PL071719.M
 Quant Title : GC Extractables
 QLast Update : Fri Jul 19 01:19:13 2019
 Response via : Initial Calibration
 Integrator: ChemStation

Volume Inj. : 1 µl
 Signal #1 Phase : ZB-MR2 Signal #2 Phase: ZB-MR1
 Signal #1 Info : 30M x 0.32mm x0.2 Signal #2 Info : 30M x 0.32mm x0.5µm

| Compound | RT#1 | RT#2 | Resp#1 | Resp#2 | ng/ml | ng/ml |
|-----------------------------|-------|-------|---------|----------|--------|--------|
| ----- | | | | | | |
| System Monitoring Compounds | | | | | | |
| 1) SA Tetrachlo... | 3.315 | 3.926 | 236.5E6 | 63965949 | 23.533 | 22.419 |
| 2) SA Decachlor... | 7.973 | 8.952 | 183.7E6 | 53467921 | 18.138 | 18.907 |

Target Compounds

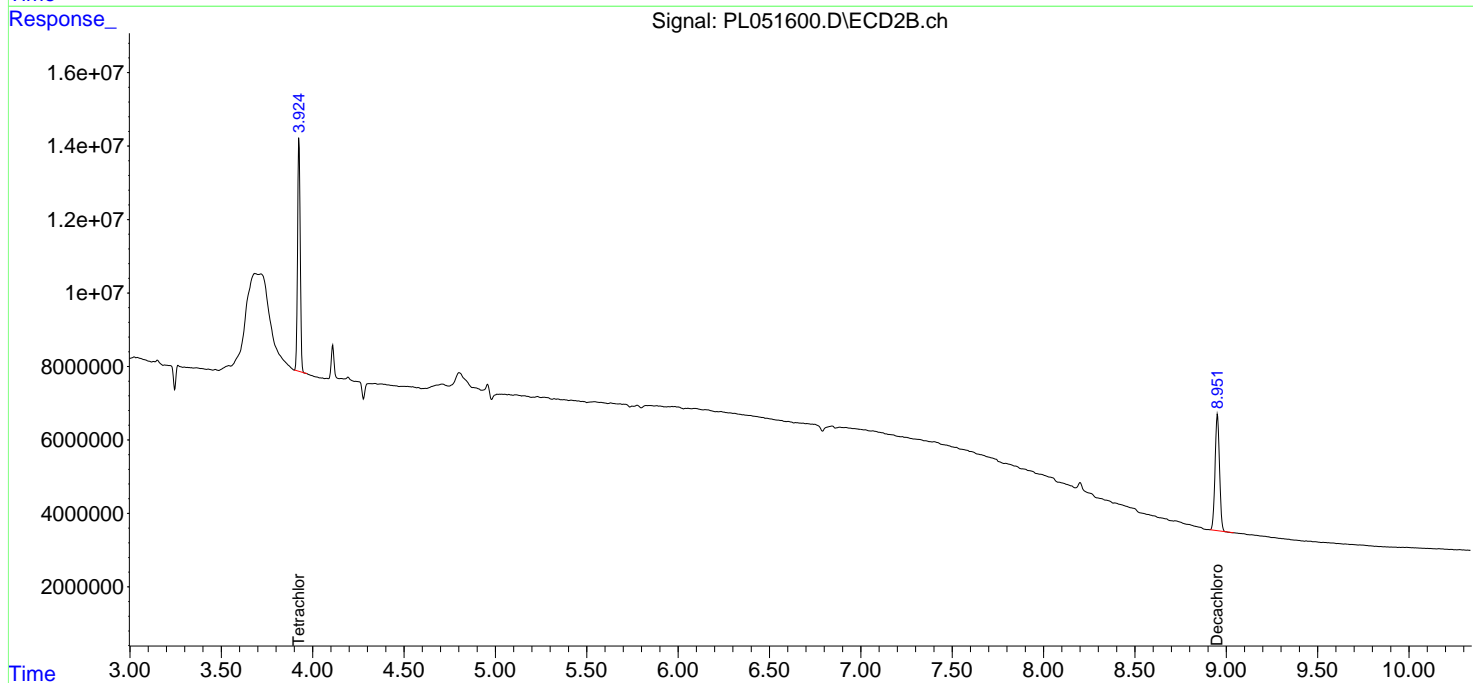
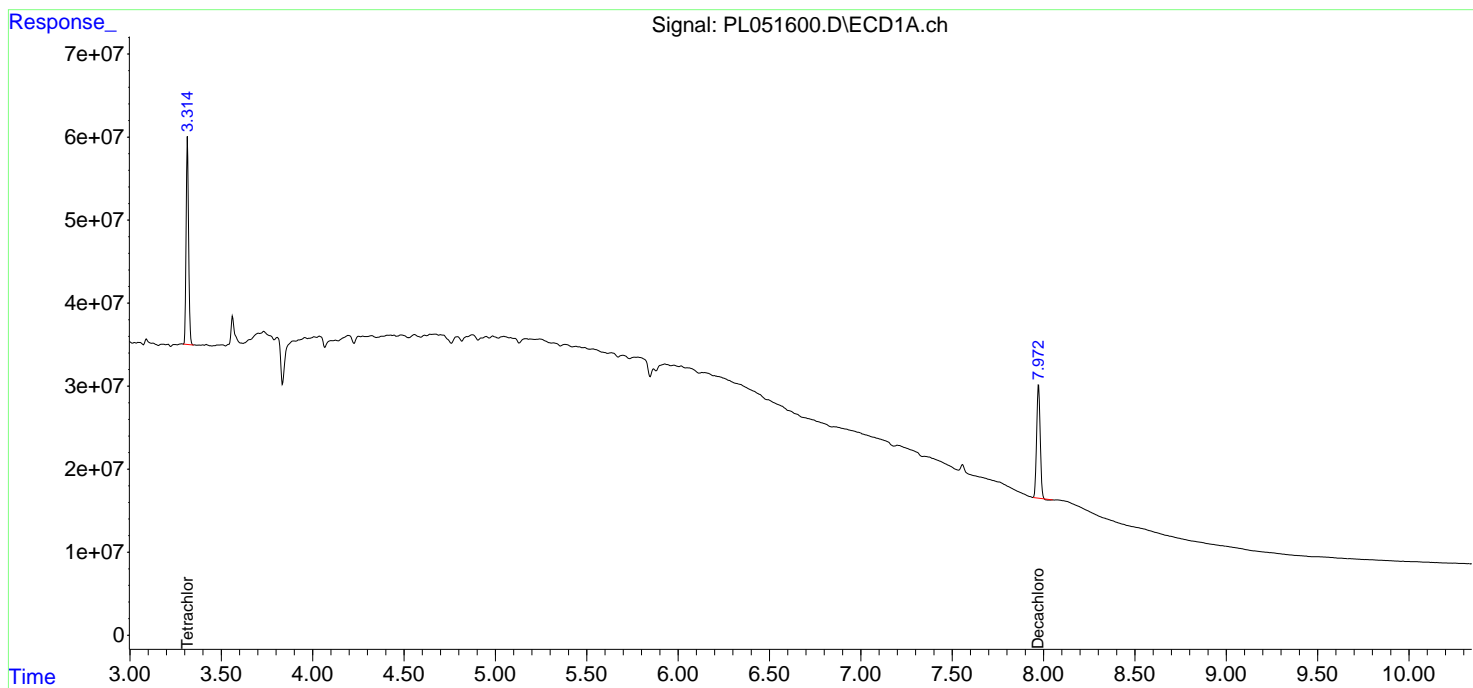
(f)=RT Delta > 1/2 Window (#)=Amounts differ by > 25% (m)=manual int.

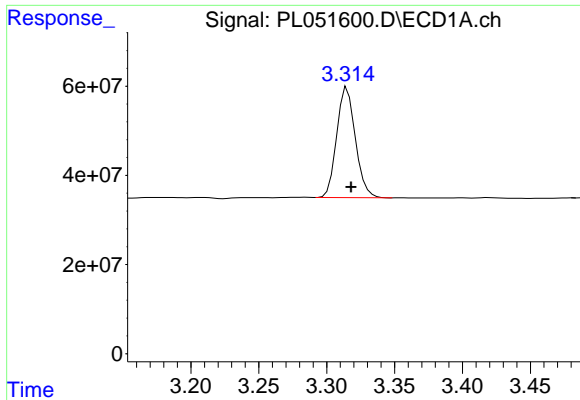
Data Path : Z:\pestpcbsrv\HPCHEM1\ECD_L\Data\PL081619\
 Data File : PL051600.D
 Signal(s) : Signal #1: ECD1A.ch Signal #2: ECD2B.ch
 Acq On : 16 Aug 2019 20:21
 Operator : SG\AJ
 Sample : K4090-12
 Misc :
 ALS Vial : 31 Sample Multiplier: 1

Instrument :
 ECD_L
 ClientSampled :
 OR-02-081519

Integration File signal 1: autoint1.e
 Integration File signal 2: autoint2.e
 Quant Time: Aug 16 22:51:15 2019
 Quant Method : Z:\pestpcbsrv\HPCHEM1\ECD_L\methods\PL071719.M
 Quant Title : GC Extractables
 QLast Update : Fri Jul 19 01:19:13 2019
 Response via : Initial Calibration
 Integrator: ChemStation

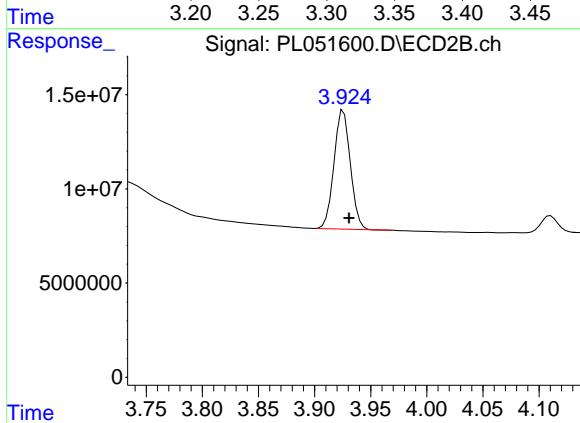
Volume Inj. : 1 µl
 Signal #1 Phase : ZB-MR2 Signal #2 Phase: ZB-MR1
 Signal #1 Info : 30M x 0.32mm x0.2 Signal #2 Info : 30M x 0.32mm x0.5µm



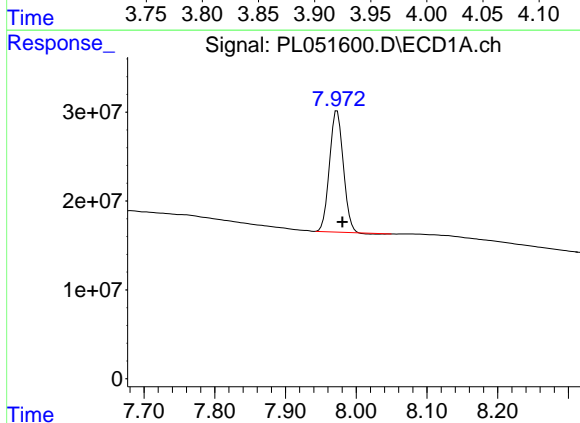


#1 Tetrachloro-m-xylene
R.T.: 3.315 min
Delta R.T.: -0.003 min
Response: 236459783
Conc: 23.53 ng/ml

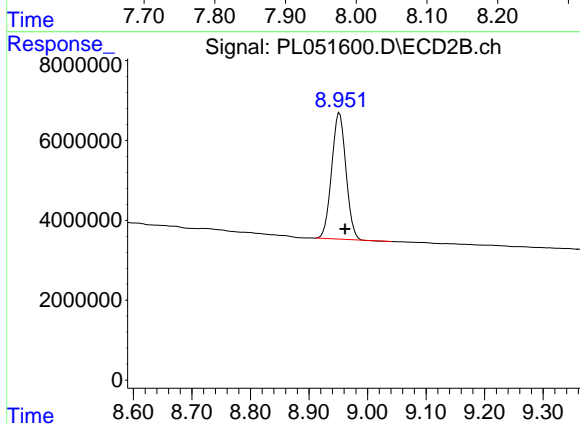
Instrument :
ECD_L
ClientSampleId :
OR-02-081519



#1 Tetrachloro-m-xylene
R.T.: 3.926 min
Delta R.T.: -0.005 min
Response: 63965949
Conc: 22.42 ng/ml



#28 Decachlorobiphenyl
R.T.: 7.973 min
Delta R.T.: -0.007 min
Response: 183655988
Conc: 18.14 ng/ml



#28 Decachlorobiphenyl
R.T.: 8.952 min
Delta R.T.: -0.009 min
Response: 53467921
Conc: 18.91 ng/ml