

Data Path : Z:\pestpcbsrv\HPCHEM1\ECD_L\Data\PL081622\
 Data File : PL077150.D
 Signal(s) : Signal #1: ECD1A.ch Signal #2: ECD2B.ch
 Acq On : 16 Aug 2022 12:41
 Operator : AR\AJ
 Sample : INDB355
 Misc :
 ALS Vial : 14 Sample Multiplier: 1

Instrument :
 ECD_L
 ClientSampleId :

Integration File signal 1: autoint1.e
 Integration File signal 2: autoint2.e
 Quant Time: Aug 17 06:21:37 2022
 Quant Method : Z:\pestpcbsrv\HPCHEM1\ECD_L\methods\PL072122CLP.M
 Quant Title : GC Extractables
 QLast Update : Mon Jul 25 05:54:24 2022
 Response via : Initial Calibration
 Integrator: ChemStation

Volume Inj. : 1 µl
 Signal #1 Phase : ZB-MR2 Signal #2 Phase: ZB-MR1
 Signal #1 Info : 30M x 0.32mm x0.2 Signal #2 Info : 30M x 0.32mm x 0.50µm

Compound	RT#1	RT#2	Resp#1	Resp#2	ng/ml	ng/ml

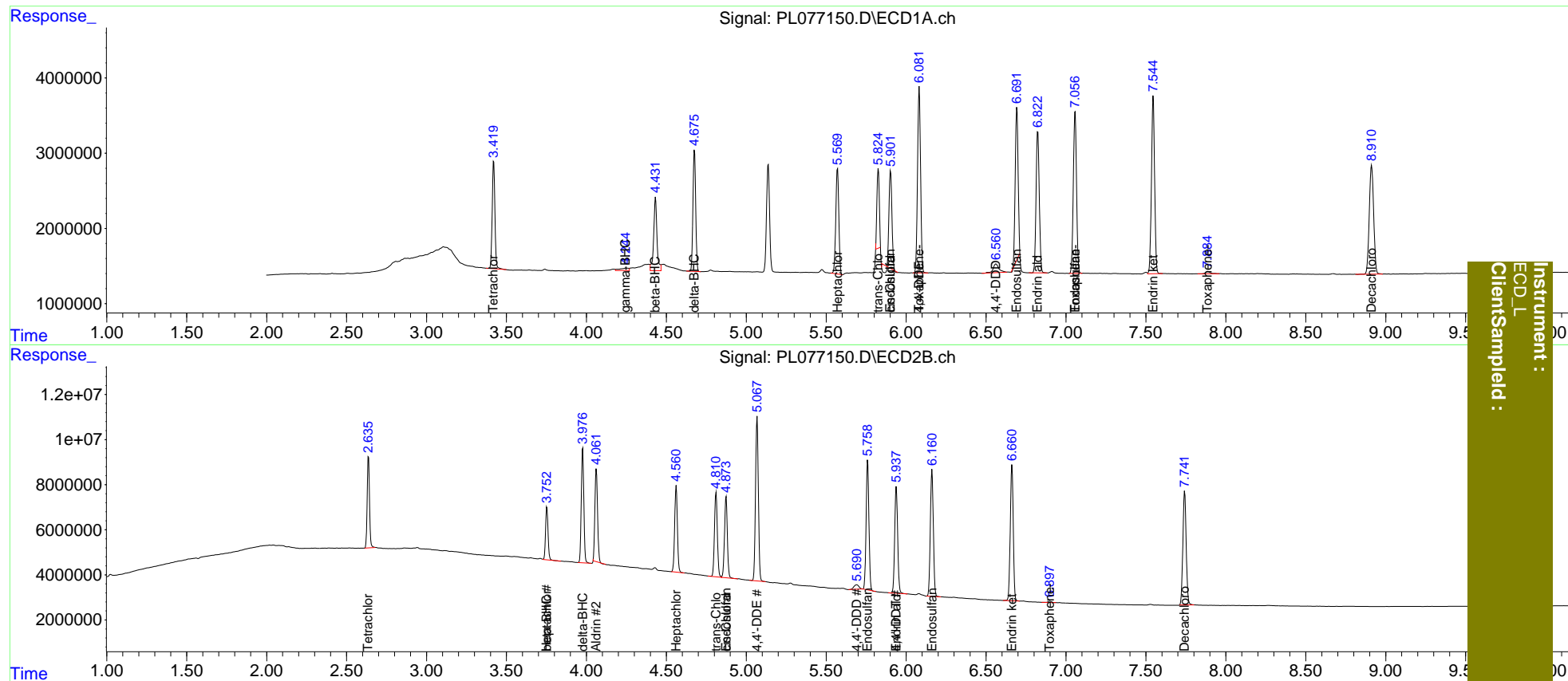
System Monitoring Compounds						
1) SA Tetrachlo...	3.420	2.637	16571298	40581742	18.288	17.308
2) SA Decachlor...	8.912	7.742	27691177	71550330	35.364	35.631
Target Compounds						
3) MA gamma-BHC...	4.246f	0.000	1230715	0	1.025	N.D. #
4) MA Heptachlor	0.000	3.753f	0	24963127	N.D.	8.380
5) MB Aldrin	0.000	4.062	0	47037097	N.D.	16.340
6) B beta-BHC	4.432	3.753	14024268	24963127	23.587	17.369 #
7) B delta-BHC	4.676	3.977	19056279	55217411	17.111	17.412
8) B Heptachlo...	5.570	4.562	18438654	45240977	17.211	17.325
9) A Endosulfan I	5.903f	4.874f	15408240	45130828	16.218	19.492
10) B trans-Chl...	5.826	4.811	10895621	46348074	10.250	17.564 #
11) B cis-Chlor...	5.903	4.874	15408240	45130828	14.620	17.497
12) B 4,4'-DDE	6.082	5.068	32109099	88637837	33.477	36.548
15) B Endosulfa...	6.693	5.759	25176669	70793191	28.713	34.458
16) A 4,4'-DDD	6.562f	5.691f	2874540	4351616	3.732	2.291 #
17) MA 4,4'-DDT	0.000	5.939f	0	61412685	N.D.	32.048
18) B Endrin al...	6.823	5.939	26236840	61412685	34.006	34.683
19) B Endosulfa...	7.057	6.162	30238189	72175554	34.036	34.610
21) B Endrin ke...	7.546	6.662	32730920	77306374	33.508	33.960
22) Toxaphene-1	6.082f	0.000	32109099	0	6522.242	N.D. #
24) Toxaphene-3	7.057	0.000	30238189	0	1626.106	N.D. #
25) Toxaphene-4	0.000	6.898	0	898796	N.D.	22.832
26) Toxaphene-5	7.886f	0.000	635392	0	42.866	N.D. #

(f)=RT Delta > 1/2 Window (#)=Amounts differ by > 25% (m)=manual int.

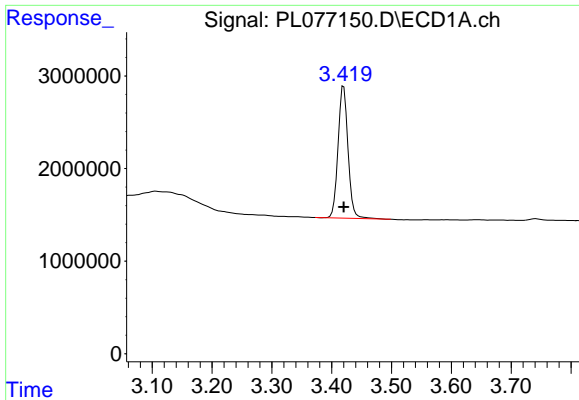
Data Path : Z:\pestpcbsrv\HPCHEM1\ECD_L\Data\PL081622\
 Data File : PL077150.D
 Signal(s) : Signal #1: ECD1A.ch Signal #2: ECD2B.ch
 Acq On : 16 Aug 2022 12:41
 Operator : AR\AJ
 Sample : INDB355
 Misc :
 ALS Vial : 14 Sample Multiplier: 1

Integration File signal 1: autoint1.e
 Integration File signal 2: autoint2.e
 Quant Time: Aug 17 06:21:37 2022
 Quant Method : Z:\pestpcbsrv\HPCHEM1\ECD_L\methods\PL072122CLP.M
 Quant Title : GC Extractables
 QLast Update : Mon Jul 25 05:54:24 2022
 Response via : Initial Calibration
 Integrator: ChemStation

Volume Inj. : 1 µl
 Signal #1 Phase : ZB-MR2 Signal #2 Phase: ZB-MR1
 Signal #1 Info : 30M x 0.32mm x0.2 Signal #2 Info : 30M x 0.32mm x 0.50µm

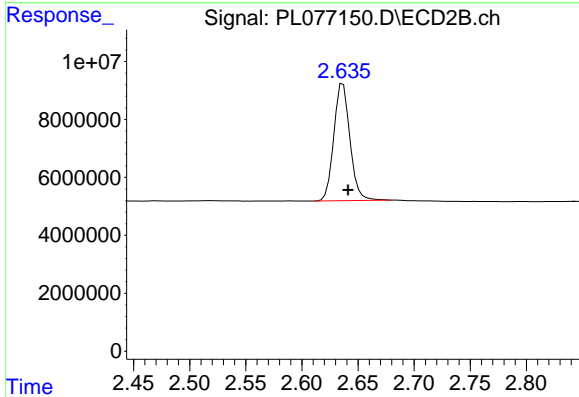


Instrument : ECD_L
 Client/SampleID :

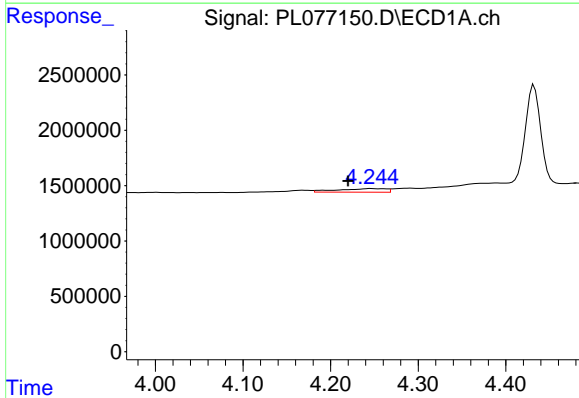


#1 Tetrachloro-m-xylene
 R.T.: 3.420 min
 Delta R.T.: 0.000 min
 Response: 16571298
 Conc: 18.29 ng/ml

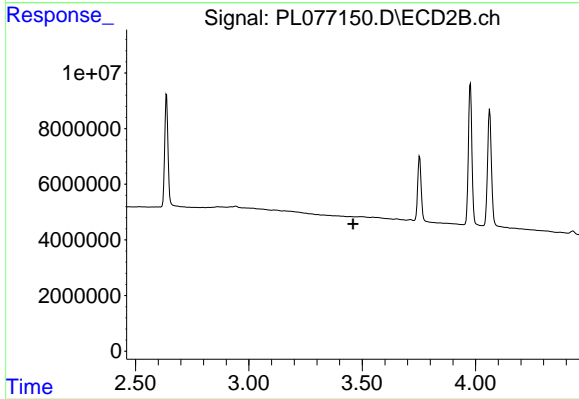
Instrument :
 ECD_L
 ClientSampleId :



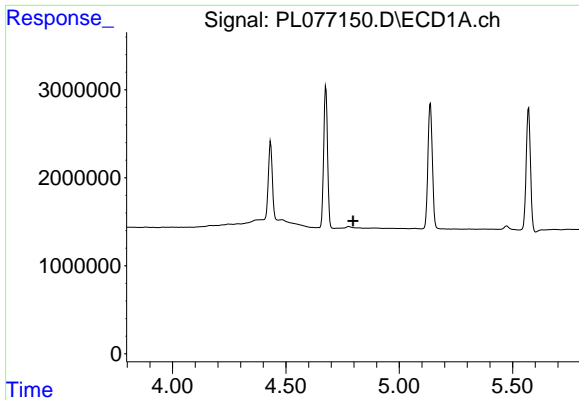
#1 Tetrachloro-m-xylene
 R.T.: 2.637 min
 Delta R.T.: -0.004 min
 Response: 40581742
 Conc: 17.31 ng/ml



#3 gamma-BHC (Lindane)
 R.T.: 4.246 min
 Delta R.T.: 0.026 min
 Response: 1230715
 Conc: 1.02 ng/ml



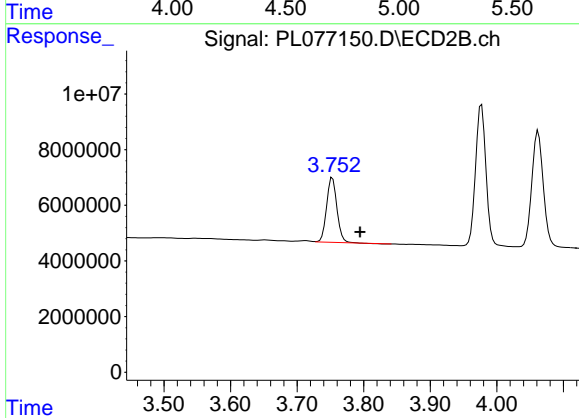
#3 gamma-BHC (Lindane)
 R.T.: 0.000 min
 Exp R.T. : 3.460 min
 Response: 0
 Conc: N.D.



#4 Heptachlor

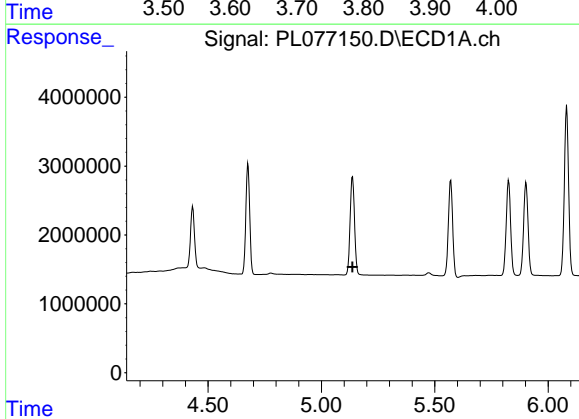
R.T.: 0.000 min
 Exp R.T.: 4.796 min
 Response: 0
 Conc: N.D.

Instrument :
 ECD_L
 ClientSampleId :



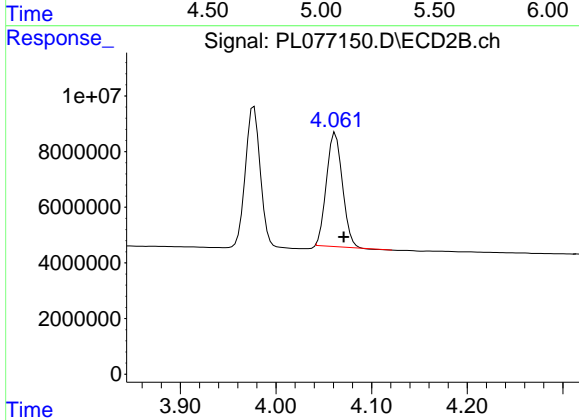
#4 Heptachlor

R.T.: 3.753 min
 Delta R.T.: -0.042 min
 Response: 24963127
 Conc: 8.38 ng/ml



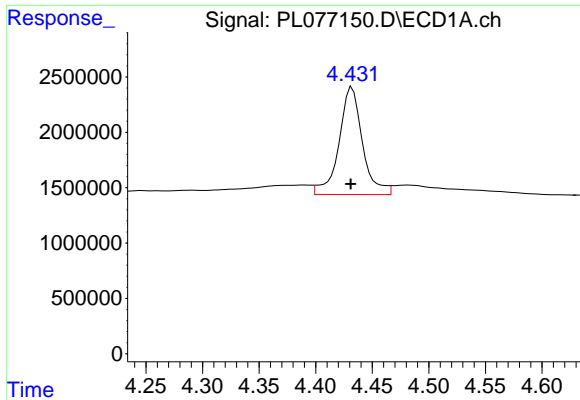
#5 Aldrin

R.T.: 0.000 min
 Exp R.T.: 5.137 min
 Response: 0
 Conc: N.D.



#5 Aldrin

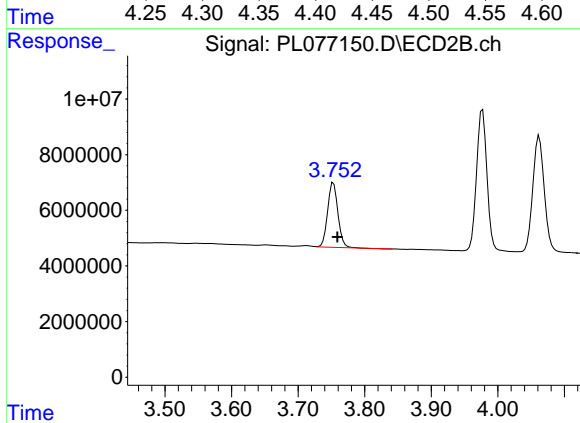
R.T.: 4.062 min
 Delta R.T.: -0.009 min
 Response: 47037097
 Conc: 16.34 ng/ml



#6 beta-BHC

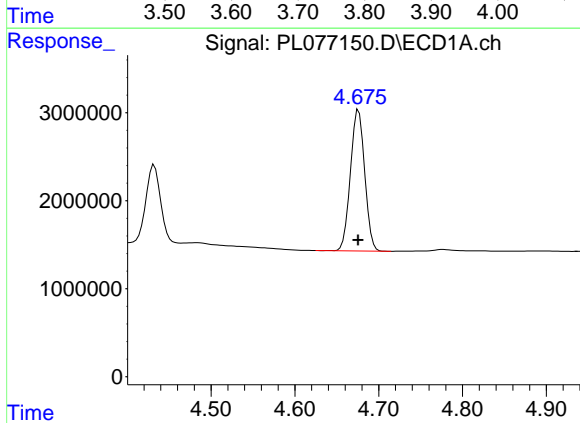
R.T.: 4.432 min
 Delta R.T.: 0.001 min
 Response: 14024268
 Conc: 23.59 ng/ml

Instrument :
 ECD_L
 ClientSampleId :



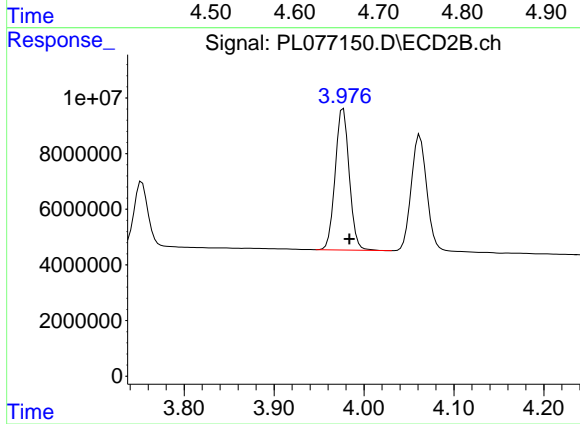
#6 beta-BHC

R.T.: 3.753 min
 Delta R.T.: -0.006 min
 Response: 24963127
 Conc: 17.37 ng/ml



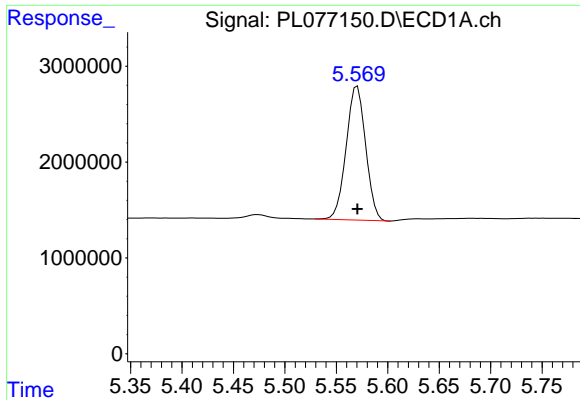
#7 delta-BHC

R.T.: 4.676 min
 Delta R.T.: 0.000 min
 Response: 19056279
 Conc: 17.11 ng/ml



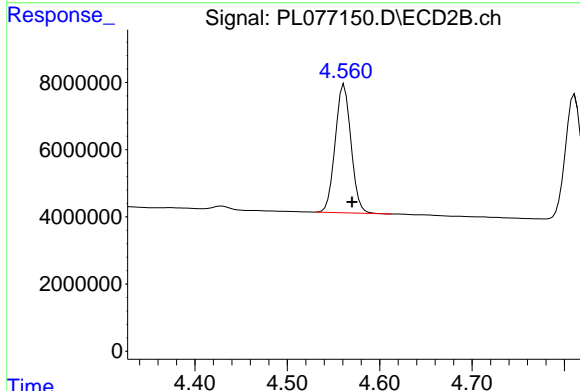
#7 delta-BHC

R.T.: 3.977 min
 Delta R.T.: -0.006 min
 Response: 55217411
 Conc: 17.41 ng/ml

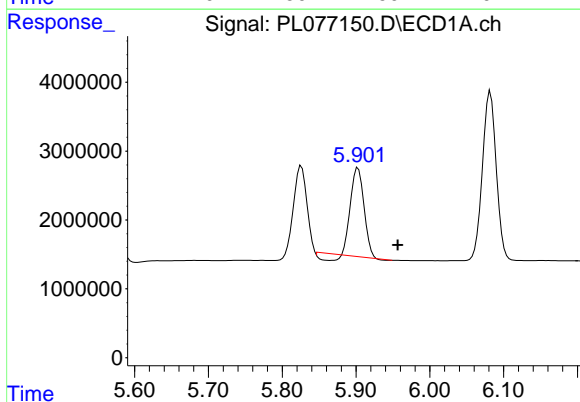


#8 Heptachlor epoxide
 R.T.: 5.570 min
 Delta R.T.: 0.000 min
 Response: 18438654
 Conc: 17.21 ng/ml

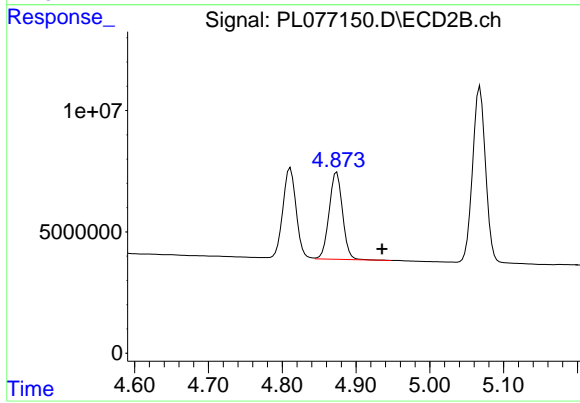
Instrument :
 ECD_L
 ClientSampleId :



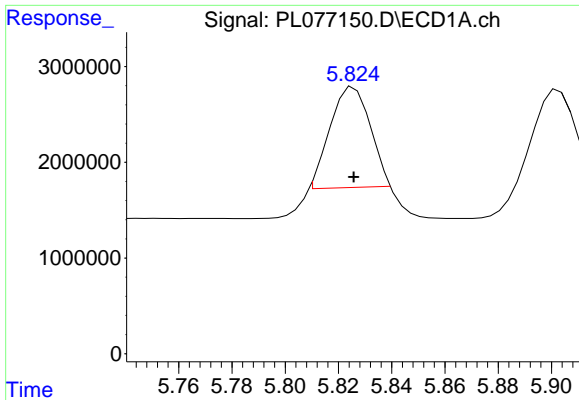
#8 Heptachlor epoxide
 R.T.: 4.562 min
 Delta R.T.: -0.008 min
 Response: 45240977
 Conc: 17.33 ng/ml



#9 Endosulfan I
 R.T.: 5.903 min
 Delta R.T.: -0.054 min
 Response: 15408240
 Conc: 16.22 ng/ml

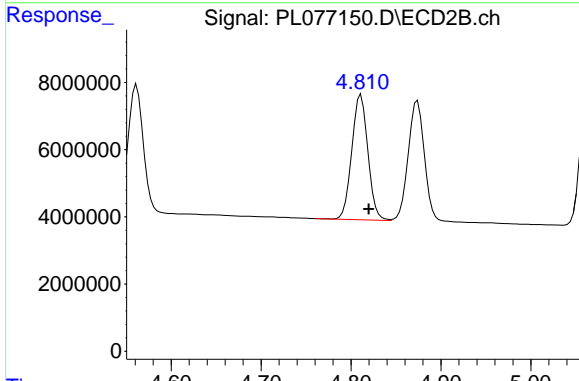


#9 Endosulfan I
 R.T.: 4.874 min
 Delta R.T.: -0.062 min
 Response: 45130828
 Conc: 19.49 ng/ml

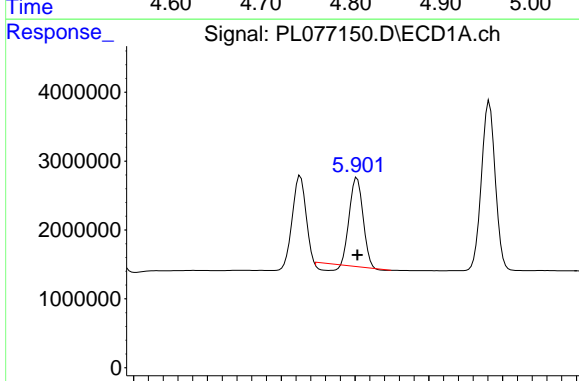


#10 trans-Chlordane
 R.T.: 5.826 min
 Delta R.T.: 0.000 min
 Response: 10895621
 Conc: 10.25 ng/ml

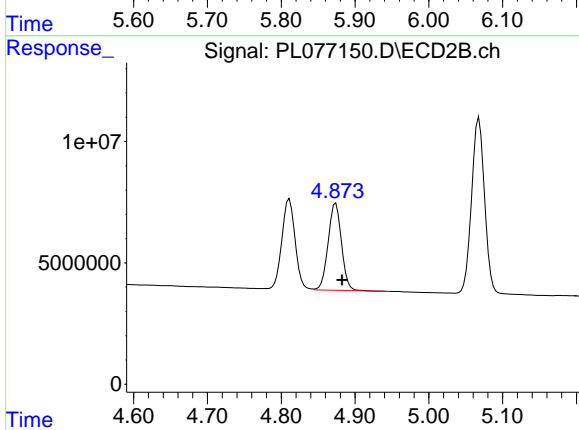
Instrument :
 ECD_L
 ClientSampleId :



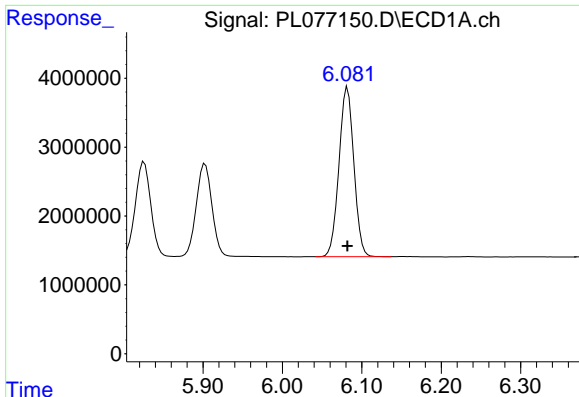
#10 trans-Chlordane
 R.T.: 4.811 min
 Delta R.T.: -0.009 min
 Response: 46348074
 Conc: 17.56 ng/ml



#11 cis-Chlordane
 R.T.: 5.903 min
 Delta R.T.: 0.000 min
 Response: 15408240
 Conc: 14.62 ng/ml



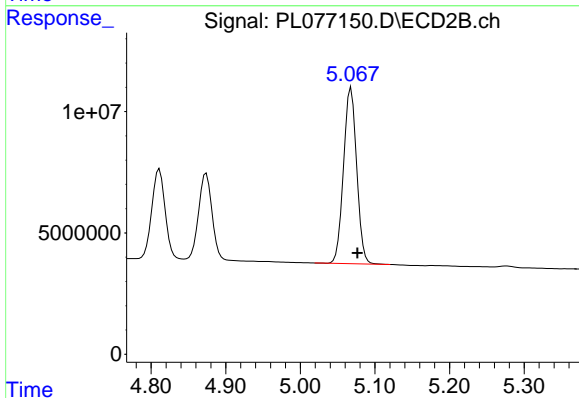
#11 cis-Chlordane
 R.T.: 4.874 min
 Delta R.T.: -0.009 min
 Response: 45130828
 Conc: 17.50 ng/ml



#12 4,4'-DDE

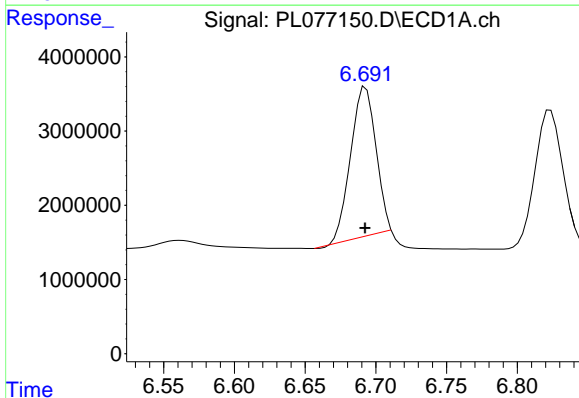
R.T.: 6.082 min
 Delta R.T.: 0.000 min
 Response: 32109099
 Conc: 33.48 ng/ml

Instrument :
 ECD_L
 ClientSampleId :



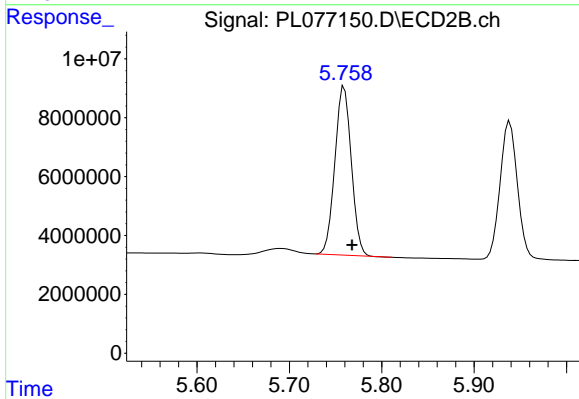
#12 4,4'-DDE

R.T.: 5.068 min
 Delta R.T.: -0.008 min
 Response: 88637837
 Conc: 36.55 ng/ml



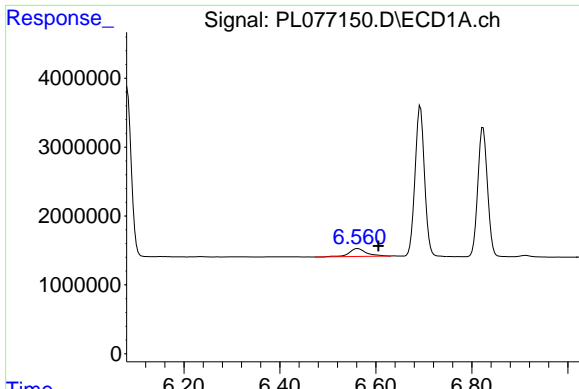
#15 Endosulfan II

R.T.: 6.693 min
 Delta R.T.: 0.000 min
 Response: 25176669
 Conc: 28.71 ng/ml



#15 Endosulfan II

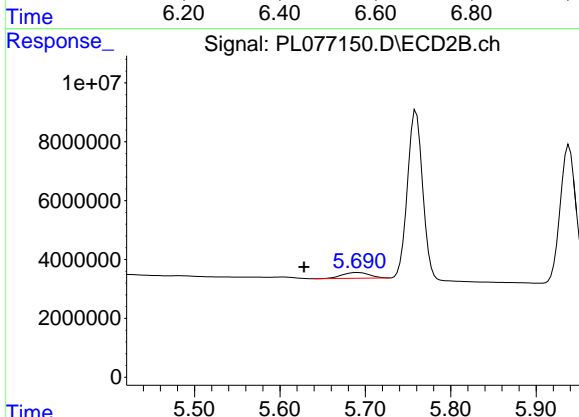
R.T.: 5.759 min
 Delta R.T.: -0.008 min
 Response: 70793191
 Conc: 34.46 ng/ml



#16 4,4'-DDD

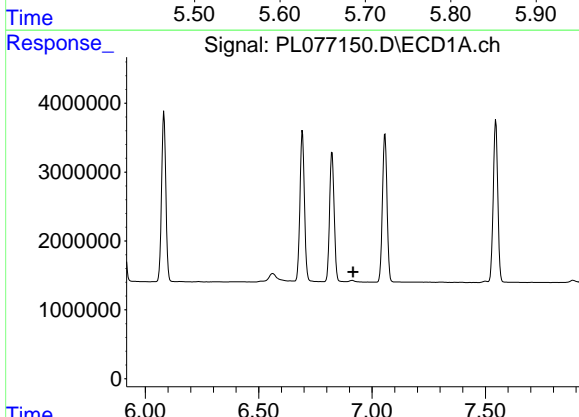
R.T.: 6.562 min
 Delta R.T.: -0.044 min
 Response: 2874540
 Conc: 3.73 ng/ml

Instrument :
 ECD_L
 ClientSampleId :



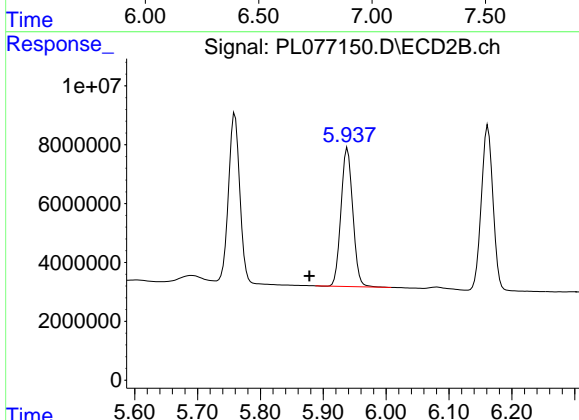
#16 4,4'-DDD

R.T.: 5.691 min
 Delta R.T.: 0.063 min
 Response: 4351616
 Conc: 2.29 ng/ml



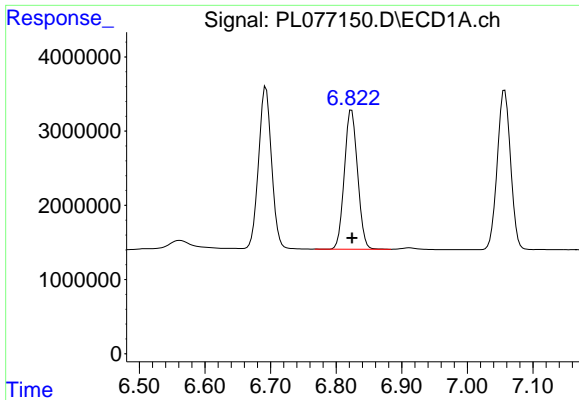
#17 4,4'-DDT

R.T.: 0.000 min
 Exp R.T. : 6.916 min
 Response: 0
 Conc: N.D.



#17 4,4'-DDT

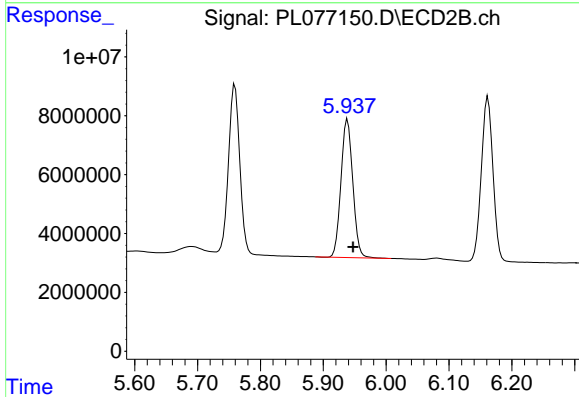
R.T.: 5.939 min
 Delta R.T.: 0.061 min
 Response: 61412685
 Conc: 32.05 ng/ml



#18 Endrin aldehyde

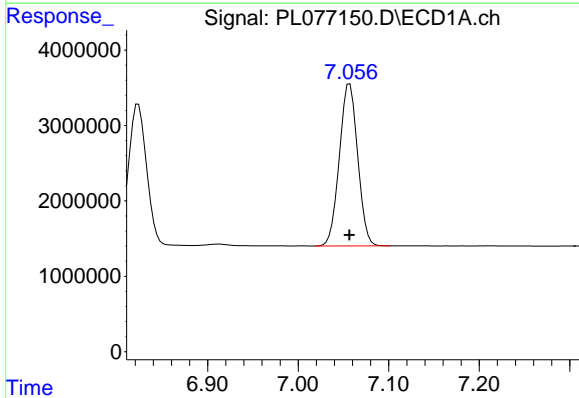
R.T.: 6.823 min
 Delta R.T.: 0.000 min
 Response: 26236840
 Conc: 34.01 ng/ml

Instrument :
 ECD_L
 ClientSampleId :



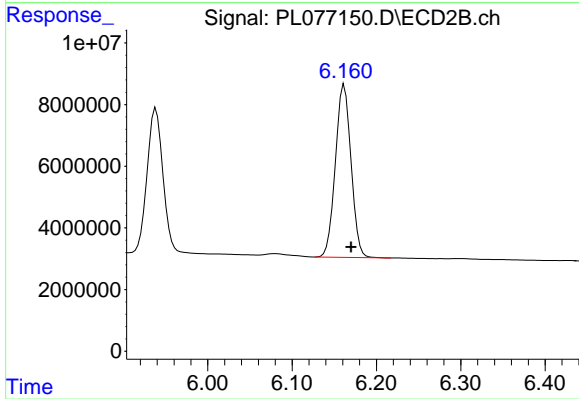
#18 Endrin aldehyde

R.T.: 5.939 min
 Delta R.T.: -0.009 min
 Response: 61412685
 Conc: 34.68 ng/ml



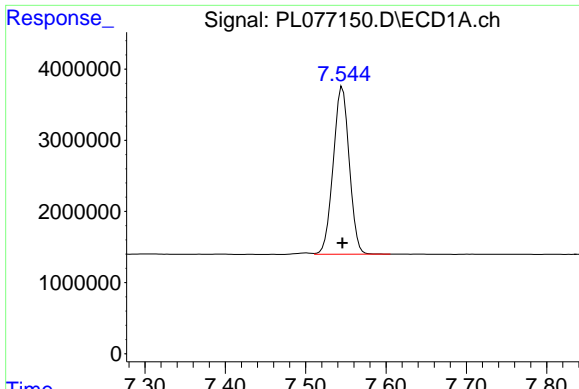
#19 Endosulfan Sulfate

R.T.: 7.057 min
 Delta R.T.: 0.000 min
 Response: 30238189
 Conc: 34.04 ng/ml



#19 Endosulfan Sulfate

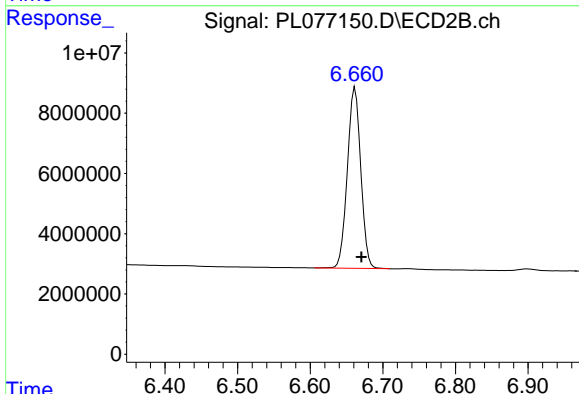
R.T.: 6.162 min
 Delta R.T.: -0.008 min
 Response: 72175554
 Conc: 34.61 ng/ml



#21 Endrin ketone

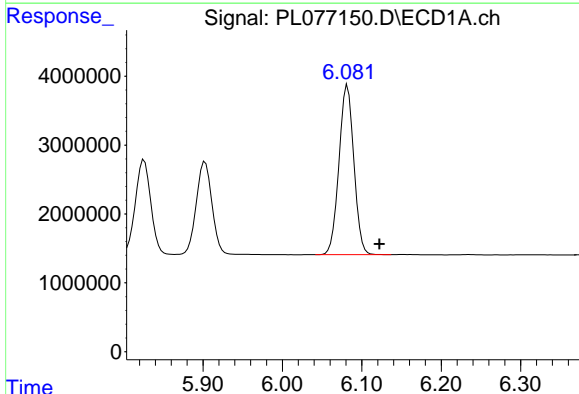
R.T.: 7.546 min
 Delta R.T.: 0.000 min
 Response: 32730920
 Conc: 33.51 ng/ml

Instrument :
 ECD_L
 ClientSampleId :



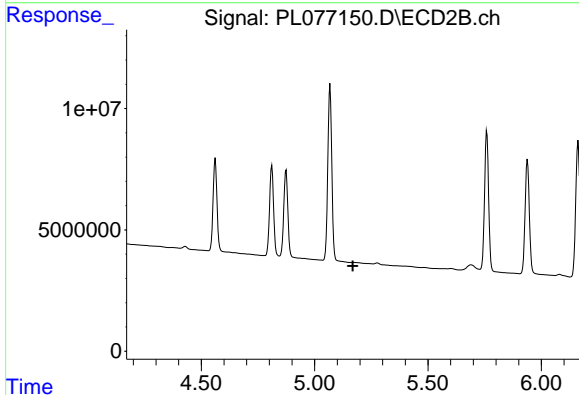
#21 Endrin ketone

R.T.: 6.662 min
 Delta R.T.: -0.009 min
 Response: 77306374
 Conc: 33.96 ng/ml



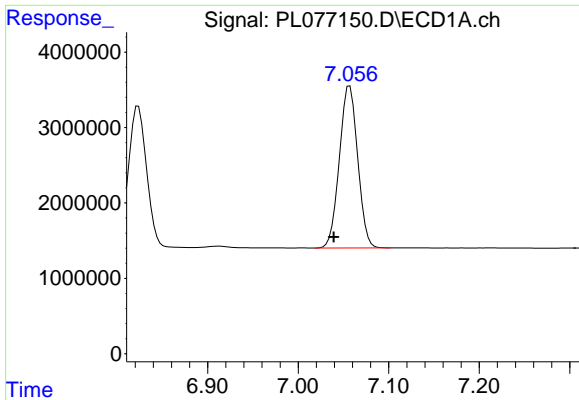
#22 Toxaphene-1

R.T.: 6.082 min
 Delta R.T.: -0.040 min
 Response: 32109099
 Conc: 6522.24 ng/ml



#22 Toxaphene-1

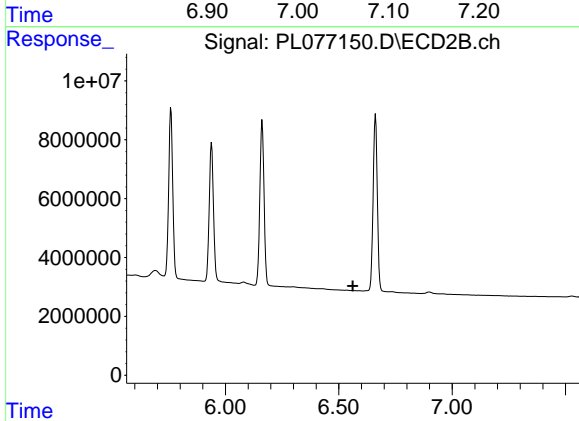
R.T.: 0.000 min
 Exp R.T. : 5.168 min
 Response: 0
 Conc: N.D.



#24 Toxaphene-3

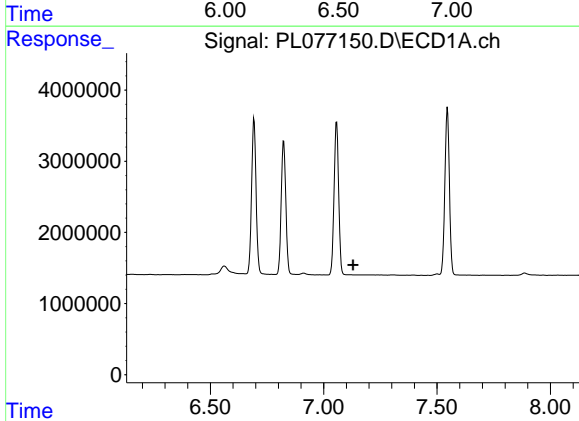
R.T.: 7.057 min
 Delta R.T.: 0.018 min
 Response: 30238189
 Conc: 1626.11 ng/m

Instrument :
 ECD_L
 ClientSampleId :



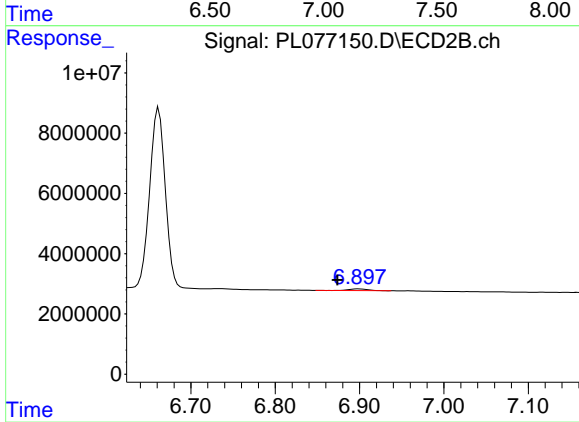
#24 Toxaphene-3

R.T.: 0.000 min
 Exp R.T. : 6.562 min
 Response: 0
 Conc: N.D.



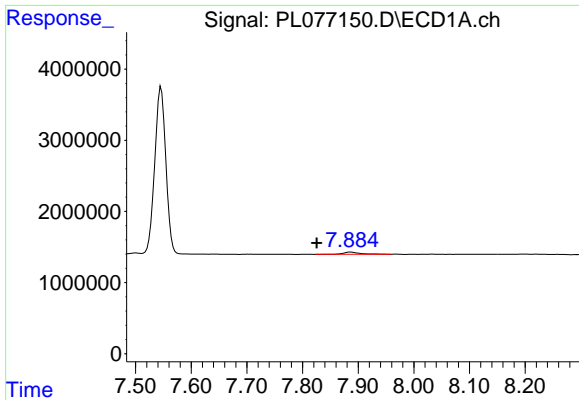
#25 Toxaphene-4

R.T.: 0.000 min
 Exp R.T. : 7.130 min
 Response: 0
 Conc: N.D.



#25 Toxaphene-4

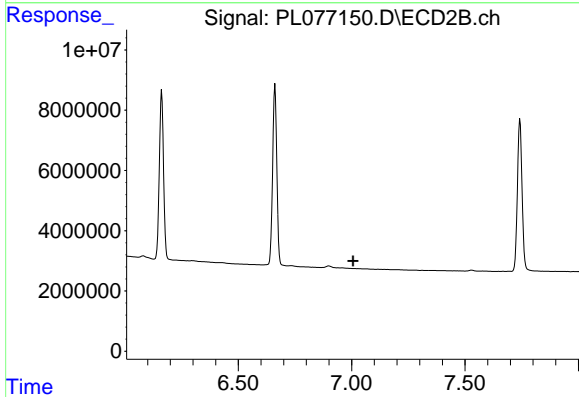
R.T.: 6.898 min
 Delta R.T.: 0.025 min
 Response: 898796
 Conc: 22.83 ng/ml



#26 Toxaphene-5

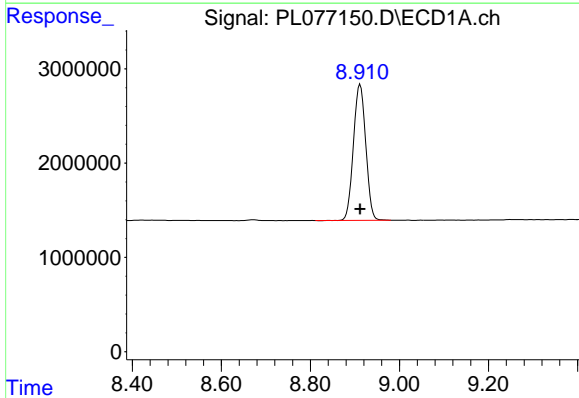
R.T.: 7.886 min
 Delta R.T.: 0.060 min
 Response: 635392
 Conc: 42.87 ng/ml

Instrument :
 ECD_L
 ClientSampleId :



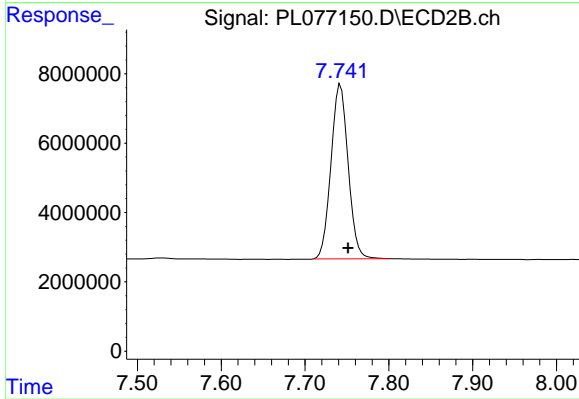
#26 Toxaphene-5

R.T.: 0.000 min
 Exp R.T. : 7.006 min
 Response: 0
 Conc: N.D.



#27 Decachlorobiphenyl

R.T.: 8.912 min
 Delta R.T.: 0.000 min
 Response: 27691177
 Conc: 35.36 ng/ml



#27 Decachlorobiphenyl

R.T.: 7.742 min
 Delta R.T.: -0.009 min
 Response: 71550330
 Conc: 35.63 ng/ml