

Data Path : Z:\pestpcbsrv\HPCHEM1\ECD\_L\Data\PL081624\  
 Data File : PL091181.D  
 Signal(s) : Signal #1: ECD1A.ch Signal #2: ECD2B.ch  
 Acq On : 16 Aug 2024 23:08  
 Operator : AR\AJ  
 Sample : P3518-13RE  
 Misc :  
 ALS Vial : 43 Sample Multiplier: 1

Instrument :  
 ECD\_L  
 ClientSampleId :  
 OU4-TS-07-080724RE

Integration File signal 1: autoint1.e  
 Integration File signal 2: autoint2.e  
 Quant Time: Aug 27 08:25:59 2024  
 Quant Method : Z:\pestpcbsrv\HPCHEM1\ECD\_L\methods\PL081324.M  
 Quant Title : GC Extractables  
 QLast Update : Wed Aug 14 13:09:19 2024  
 Response via : Initial Calibration  
 Integrator: ChemStation

Volume Inj. : 1 µl  
 Signal #1 Phase : ZB-MR2 Signal #2 Phase: ZB-MR1  
 Signal #1 Info : 30M x 0.32mm x0.2 Signal #2 Info : 30M x 0.32mm x0.5µm

Compound	RT#1	RT#2	Resp#1	Resp#2	ng/ml	ng/ml
-----						
System Monitoring Compounds						
1) SA Tetrachlo...	3.544	2.784	21202312	18790349	9.875	9.626
28) SA Decachlor...	9.054	7.924	10859965	12043620	7.123	6.358
Target Compounds						
3) MA gamma-BHC...	0.000	3.632	0	549533	N.D.	0.209 #
4) MA Heptachlor	0.000	3.958	0	1055574	N.D.	0.409 #
5) MB Aldrin	0.000	4.238	0	738457	N.D.	0.300 #
7) B delta-BHC	0.000	4.153	0	347566	N.D.	0.137 #
8) B Heptachlo...	0.000	4.739	0	384203	N.D.	0.170 #
10) B gamma-Chl...	5.942	5.013f	3483818	5578264	1.442	2.360 #
11) B alpha-Chl...	6.025	5.052	5687816	3895513	2.362	1.656 #
12) B 4,4'-DDE	6.194	5.242	4418271	4006633	2.112	1.918
13) MA Dieldrin	0.000	5.375	0	1505093	N.D.	0.661 #
14) MA Endrin	0.000	5.666f	0	1609281	N.D.	0.790 #
16) A 4,4'-DDD	0.000	5.796	0	670472	N.D.	0.406 #
17) MA 4,4'-DDT	0.000	6.045	0	2496909	N.D.	1.406 #
18) B Endrin al...	0.000	6.142f	0	120171	N.D.	0.077 #
19) B Endosulfa...	0.000	6.344	0	380685	N.D.	0.197 #
21) B Endrin ke...	0.000	6.882f	0	431184	N.D.	0.198 #
22) Mirex	0.000	7.035	0	1235169	N.D.	0.662 #
23) Chlordane-1	0.000	3.782	0	1571409	N.D.	21.555 #
24) Chlordane-2	0.000	4.362	0	890729	N.D.	9.480 #
25) Chlordane-3	5.942	5.013f	3483818	5578264	10.030	22.971 #
26) Chlordane-4	6.025	5.052	5687816	3895513	13.523	16.707
27) Chlordane-5	0.000	5.719	0	599700	N.D.	8.662 #

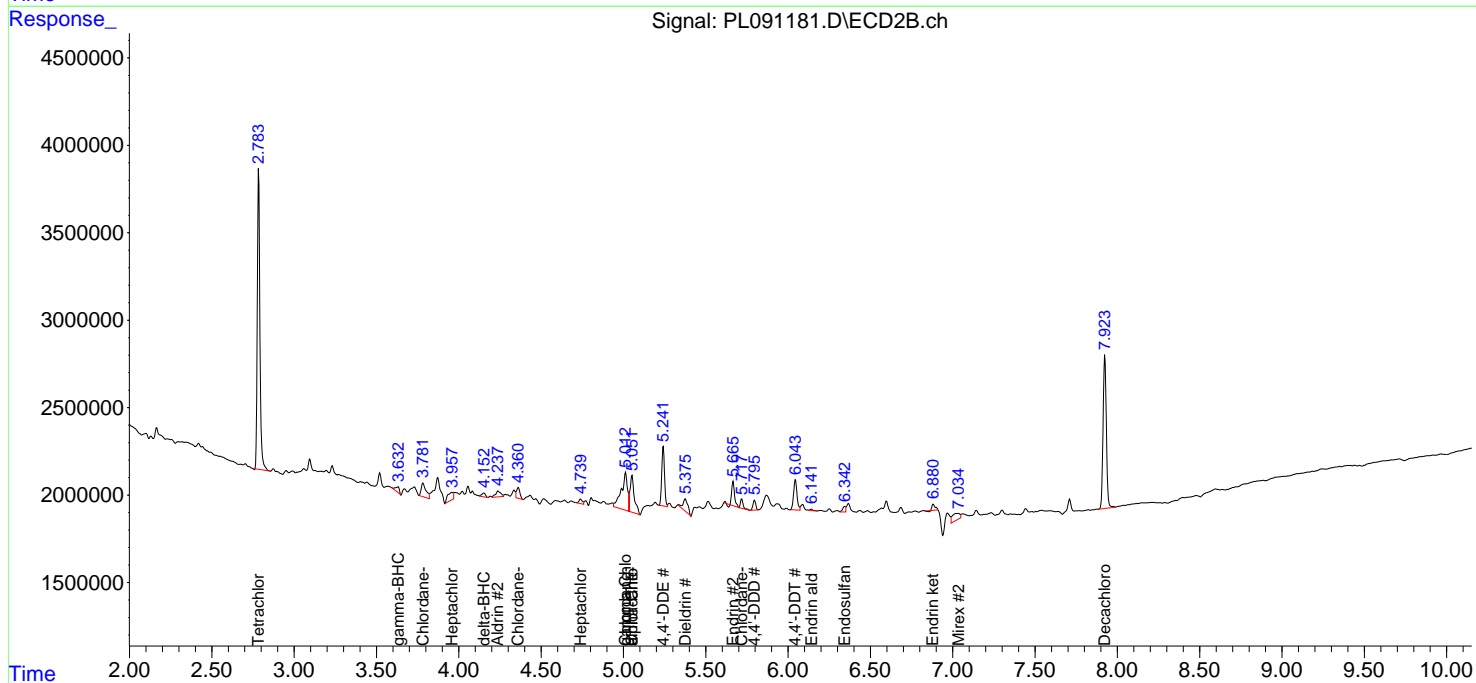
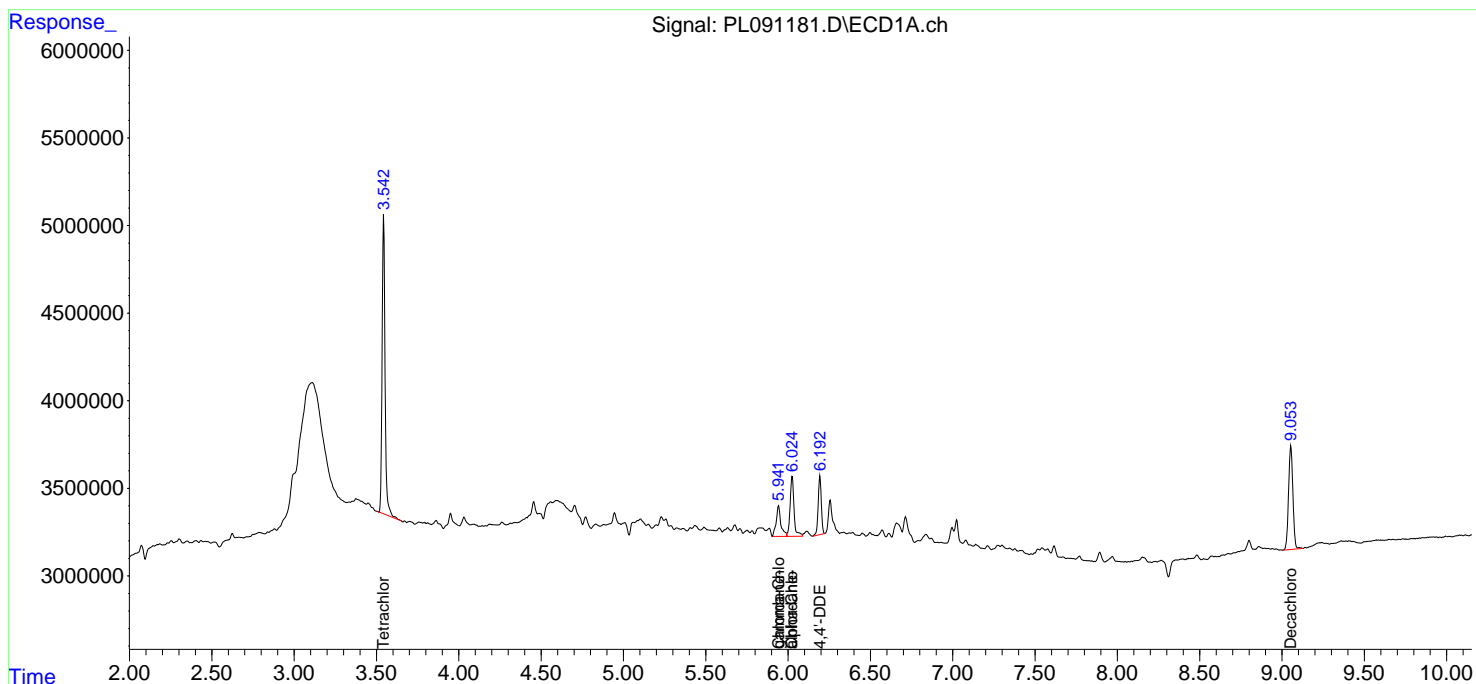
(f)=RT Delta > 1/2 Window (#)=Amounts differ by > 25% (m)=manual int.

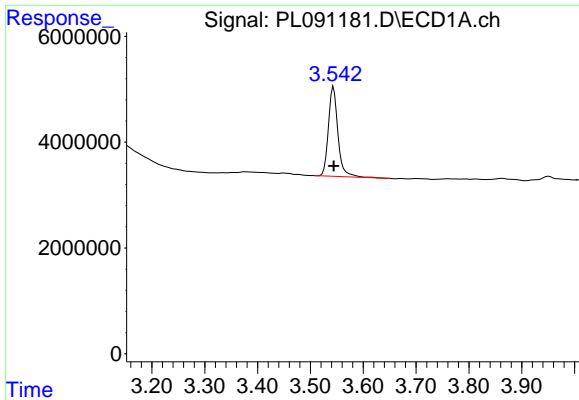
Data Path : Z:\pestpcbsrv\HPCHEM1\ECD\_L\Data\PL081624\  
 Data File : PL091181.D  
 Signal(s) : Signal #1: ECD1A.ch Signal #2: ECD2B.ch  
 Acq On : 16 Aug 2024 23:08  
 Operator : AR\AJ  
 Sample : P3518-13RE  
 Misc :  
 ALS Vial : 43 Sample Multiplier: 1

Instrument :  
 ECD\_L  
 ClientSampleId :  
 OU4-TS-07-080724RE

Integration File signal 1: autoint1.e  
 Integration File signal 2: autoint2.e  
 Quant Time: Aug 27 08:25:59 2024  
 Quant Method : Z:\pestpcbsrv\HPCHEM1\ECD\_L\methods\PL081324.M  
 Quant Title : GC Extractables  
 QLast Update : Wed Aug 14 13:09:19 2024  
 Response via : Initial Calibration  
 Integrator: ChemStation

Volume Inj. : 1 µl  
 Signal #1 Phase : ZB-MR2 Signal #2 Phase: ZB-MR1  
 Signal #1 Info : 30M x 0.32mm x0.2 Signal #2 Info : 30M x 0.32mm x0.5µm

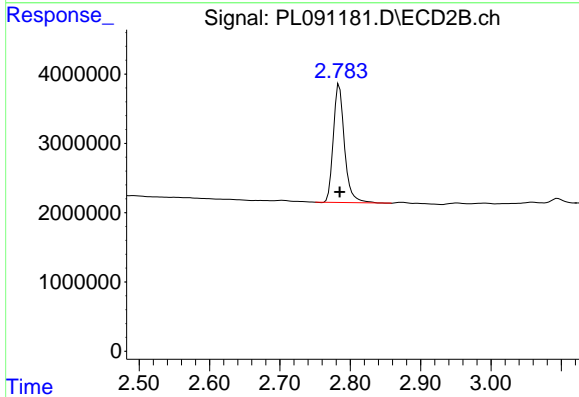




#1 Tetrachloro-m-xylene

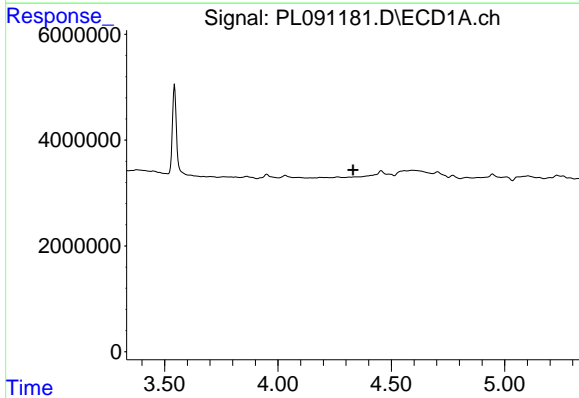
R.T.: 3.544 min  
 Delta R.T.: 0.000 min  
 Response: 21202312  
 Conc: 9.87 ng/ml

Instrument :  
 ECD\_L  
 ClientSampleId :  
 OU4-TS-07-080724RE



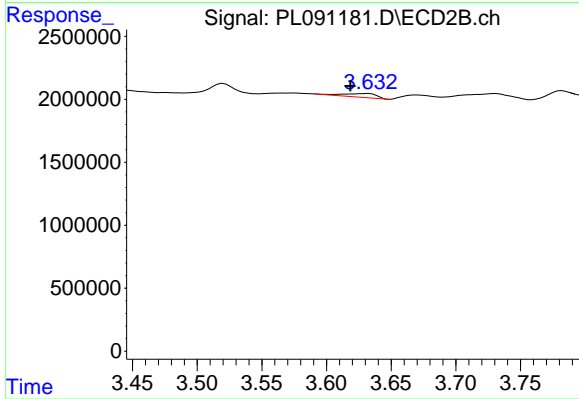
#1 Tetrachloro-m-xylene

R.T.: 2.784 min  
 Delta R.T.: 0.000 min  
 Response: 18790349  
 Conc: 9.63 ng/ml



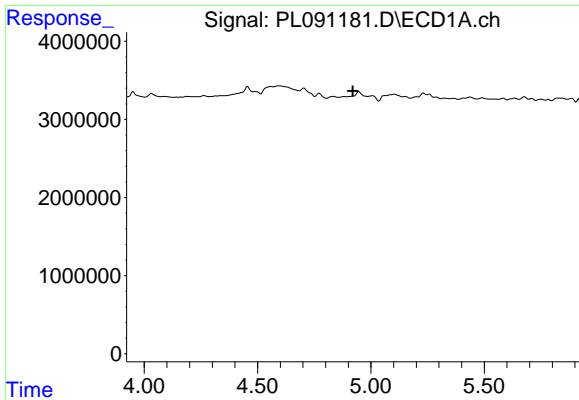
#3 gamma-BHC (Lindane)

R.T.: 0.000 min  
 Exp R.T. : 4.332 min  
 Response: 0  
 Conc: N.D.



#3 gamma-BHC (Lindane)

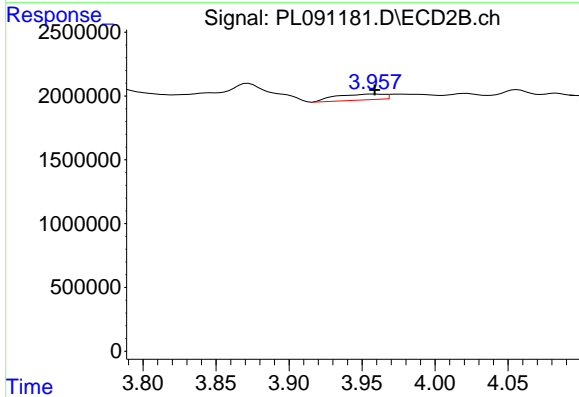
R.T.: 3.632 min  
 Delta R.T.: 0.014 min  
 Response: 549533  
 Conc: 0.21 ng/ml



#4 Heptachlor

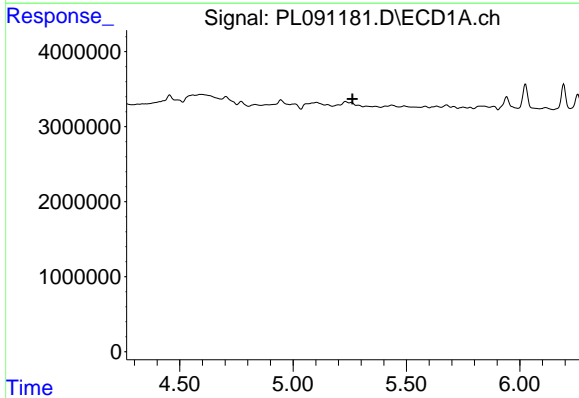
R.T.: 0.000 min  
 Exp R.T.: 4.921 min  
 Response: 0  
 Conc: N.D.

Instrument :  
 ECD\_L  
 ClientSampleId :  
 OU4-TS-07-080724RE



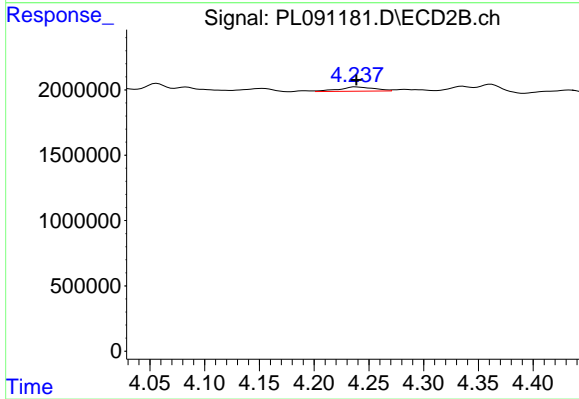
#4 Heptachlor

R.T.: 3.958 min  
 Delta R.T.: 0.000 min  
 Response: 1055574  
 Conc: 0.41 ng/ml



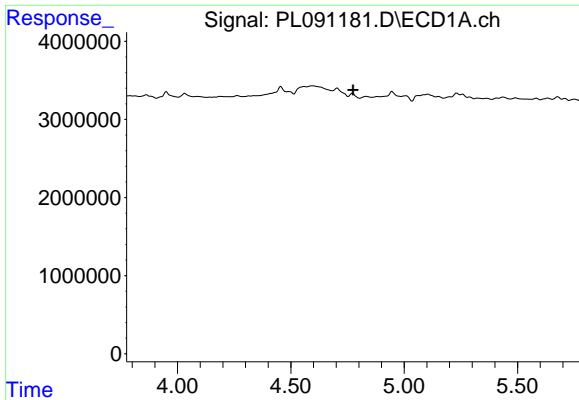
#5 Aldrin

R.T.: 0.000 min  
 Exp R.T.: 5.262 min  
 Response: 0  
 Conc: N.D.



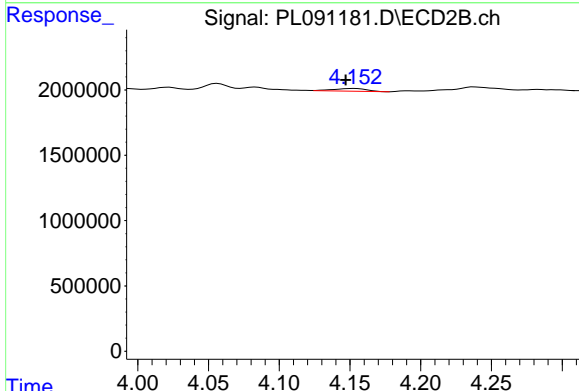
#5 Aldrin

R.T.: 4.238 min  
 Delta R.T.: 0.000 min  
 Response: 738457  
 Conc: 0.30 ng/ml

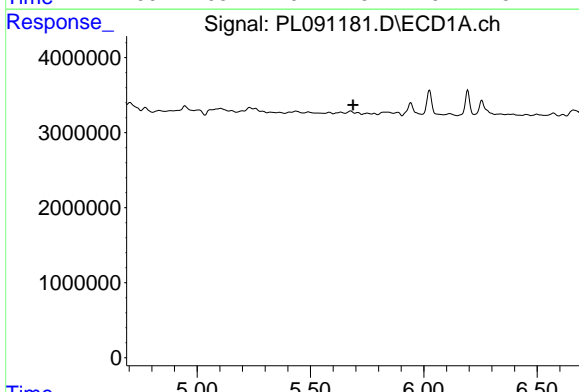


#7 delta-BHC  
 R.T.: 0.000 min  
 Exp R.T.: 4.775 min  
 Response: 0  
 Conc: N.D.

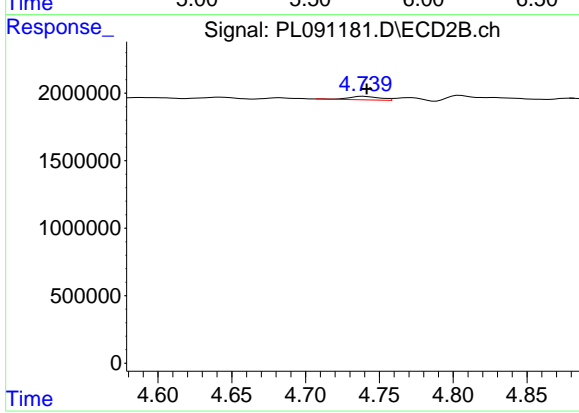
Instrument : ECD\_L  
 ClientSampleId : OU4-TS-07-080724RE



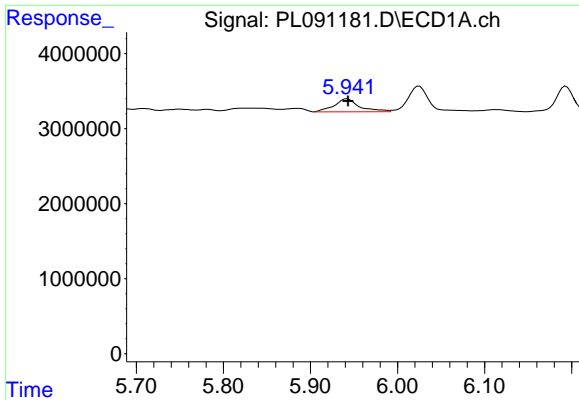
#7 delta-BHC  
 R.T.: 4.153 min  
 Delta R.T.: 0.006 min  
 Response: 347566  
 Conc: 0.14 ng/ml



#8 Heptachlor epoxide  
 R.T.: 0.000 min  
 Exp R.T.: 5.688 min  
 Response: 0  
 Conc: N.D.



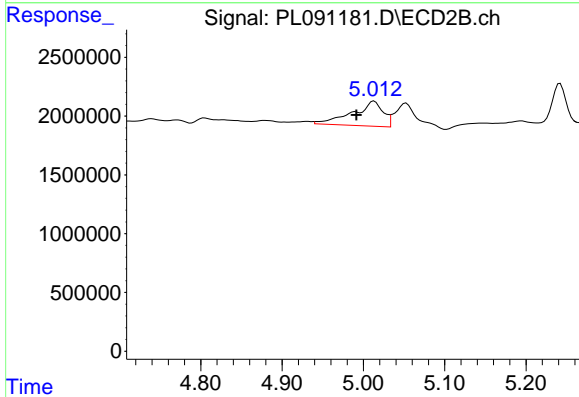
#8 Heptachlor epoxide  
 R.T.: 4.739 min  
 Delta R.T.: -0.002 min  
 Response: 384203  
 Conc: 0.17 ng/ml



#10 gamma-Chlordane

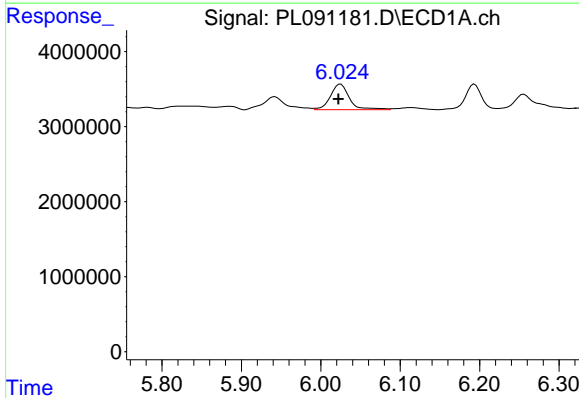
R.T.: 5.942 min  
 Delta R.T.: 0.000 min  
 Response: 3483818  
 Conc: 1.44 ng/ml

Instrument :  
 ECD\_L  
 ClientSampleId :  
 OU4-TS-07-080724RE



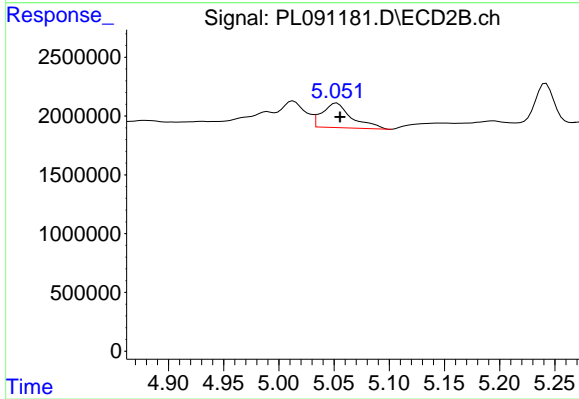
#10 gamma-Chlordane

R.T.: 5.013 min  
 Delta R.T.: 0.022 min  
 Response: 5578264  
 Conc: 2.36 ng/ml



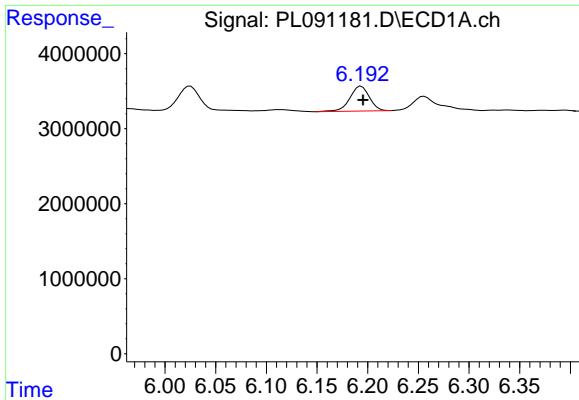
#11 alpha-Chlordane

R.T.: 6.025 min  
 Delta R.T.: 0.003 min  
 Response: 5687816  
 Conc: 2.36 ng/ml



#11 alpha-Chlordane

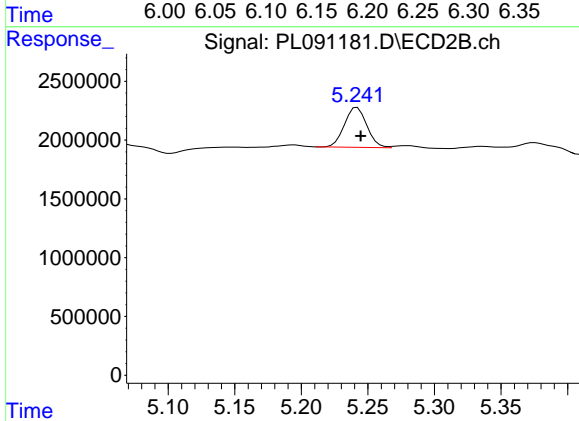
R.T.: 5.052 min  
 Delta R.T.: -0.003 min  
 Response: 3895513  
 Conc: 1.66 ng/ml



#12 4,4'-DDE

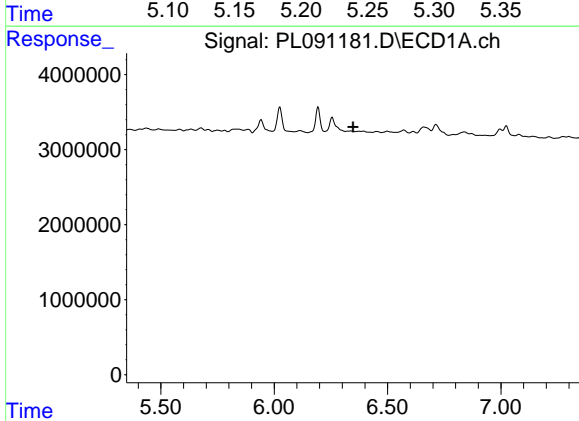
R.T.: 6.194 min  
 Delta R.T.: -0.002 min  
 Response: 4418271  
 Conc: 2.11 ng/ml

Instrument :  
 ECD\_L  
 ClientSampleId :  
 OU4-TS-07-080724RE



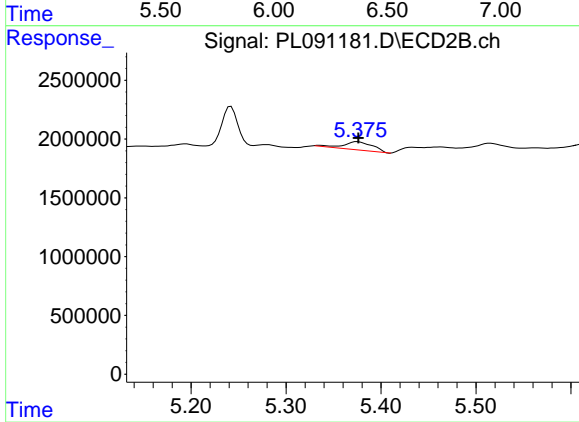
#12 4,4'-DDE

R.T.: 5.242 min  
 Delta R.T.: -0.003 min  
 Response: 4006633  
 Conc: 1.92 ng/ml



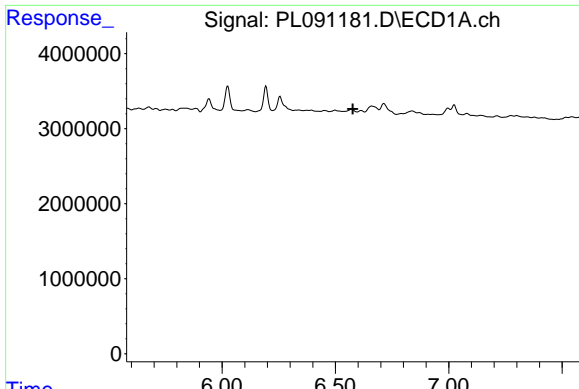
#13 Dieldrin

R.T.: 0.000 min  
 Exp R.T. : 6.348 min  
 Response: 0  
 Conc: N.D.



#13 Dieldrin

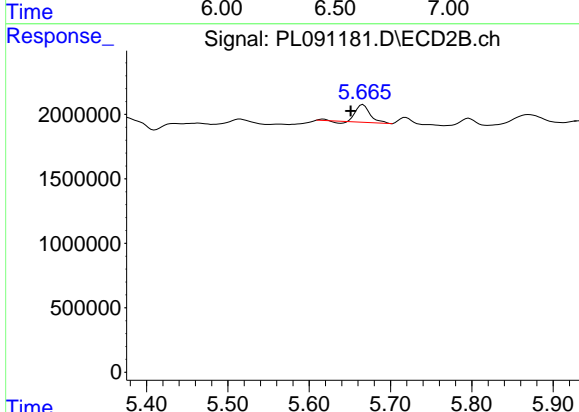
R.T.: 5.375 min  
 Delta R.T.: 0.000 min  
 Response: 1505093  
 Conc: 0.66 ng/ml



#14 Endrin

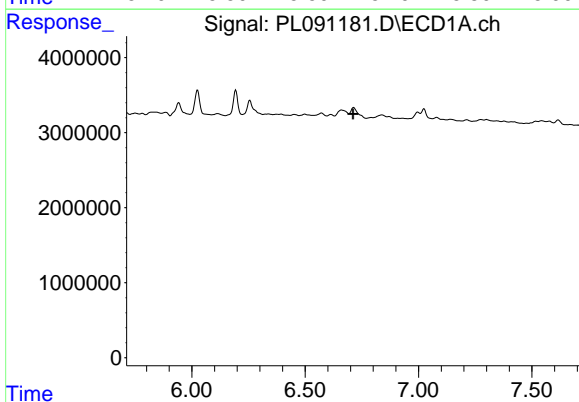
R.T.: 0.000 min  
 Exp R.T.: 6.577 min  
 Response: 0  
 Conc: N.D.

Instrument :  
 ECD\_L  
 ClientSampleId :  
 OU4-TS-07-080724RE



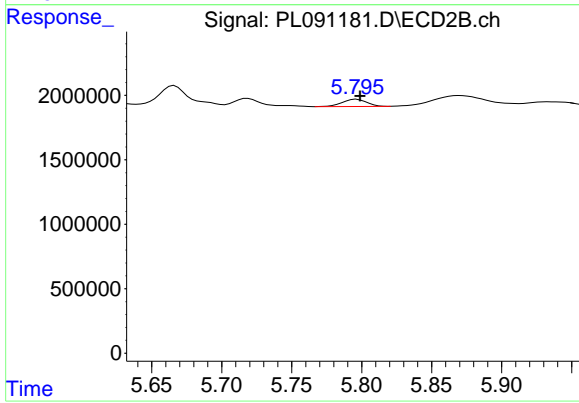
#14 Endrin

R.T.: 5.666 min  
 Delta R.T.: 0.015 min  
 Response: 1609281  
 Conc: 0.79 ng/ml



#16 4,4'-DDD

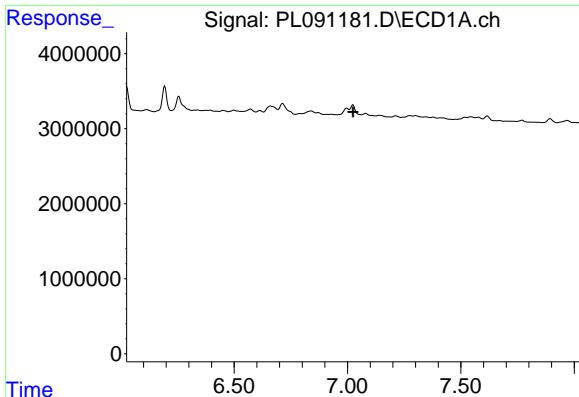
R.T.: 0.000 min  
 Exp R.T.: 6.711 min  
 Response: 0  
 Conc: N.D.



#16 4,4'-DDD

R.T.: 5.796 min  
 Delta R.T.: -0.002 min  
 Response: 670472  
 Conc: 0.41 ng/ml

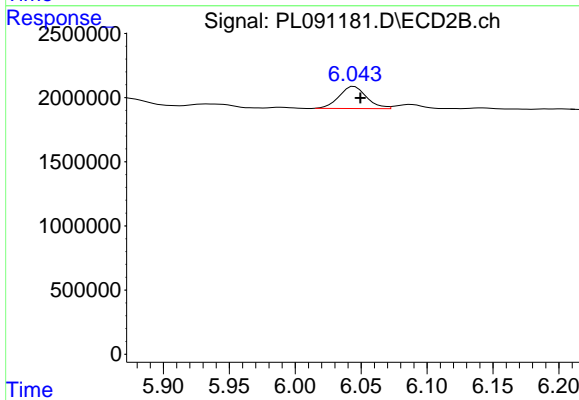




#17 4,4'-DDT

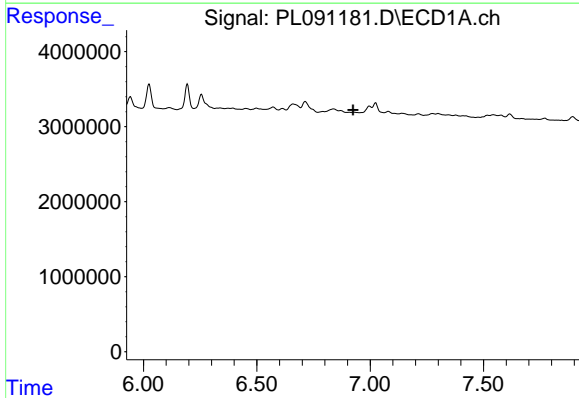
R.T.: 0.000 min  
 Exp R.T. : 7.025 min  
 Response: 0  
 Conc: N.D.

Instrument :  
 ECD\_L  
 ClientSampleId :  
 OU4-TS-07-080724RE



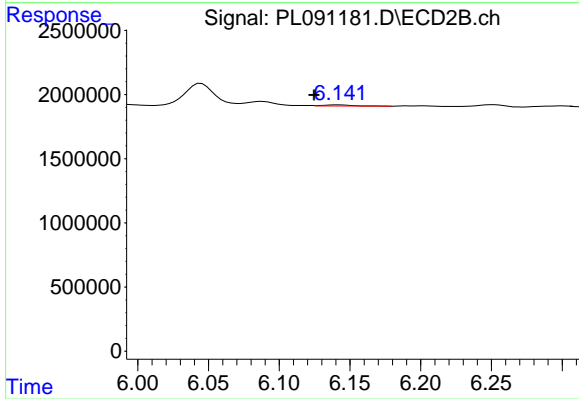
#17 4,4'-DDT

R.T.: 6.045 min  
 Delta R.T.: -0.005 min  
 Response: 2496909  
 Conc: 1.41 ng/ml



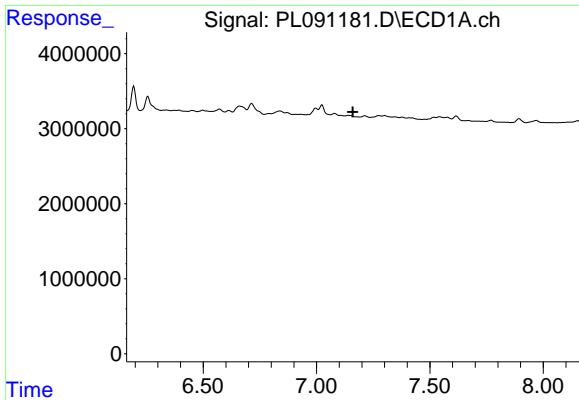
#18 Endrin aldehyde

R.T.: 0.000 min  
 Exp R.T. : 6.925 min  
 Response: 0  
 Conc: N.D.



#18 Endrin aldehyde

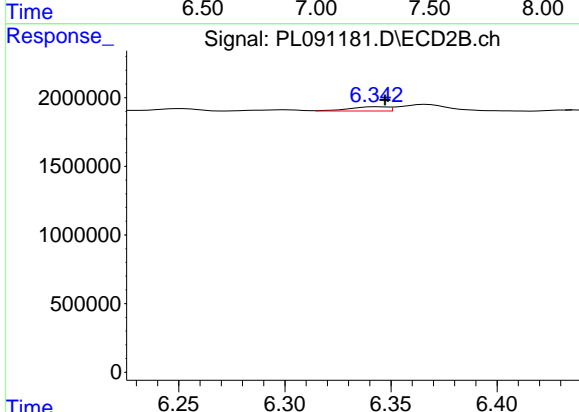
R.T.: 6.142 min  
 Delta R.T.: 0.018 min  
 Response: 120171  
 Conc: 0.08 ng/ml



#19 Endosulfan Sulfate

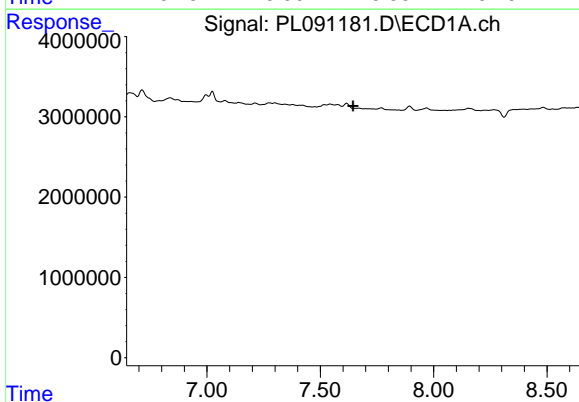
R.T.: 0.000 min  
 Exp R.T. : 7.160 min  
 Response: 0  
 Conc: N.D.

Instrument :  
 ECD\_L  
 ClientSampleId :  
 OU4-TS-07-080724RE



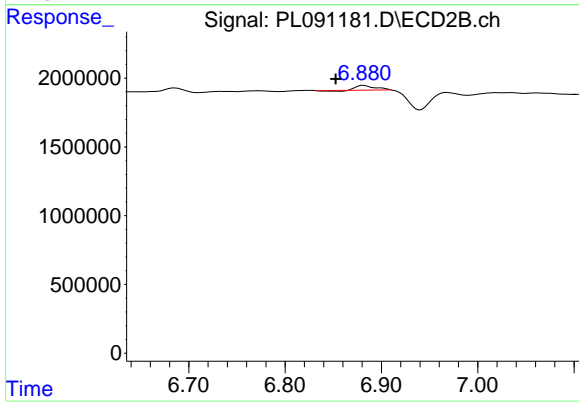
#19 Endosulfan Sulfate

R.T.: 6.344 min  
 Delta R.T.: -0.003 min  
 Response: 380685  
 Conc: 0.20 ng/ml



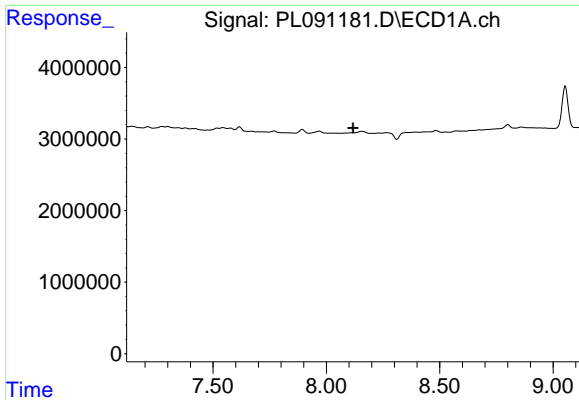
#21 Endrin ketone

R.T.: 0.000 min  
 Exp R.T. : 7.644 min  
 Response: 0  
 Conc: N.D.



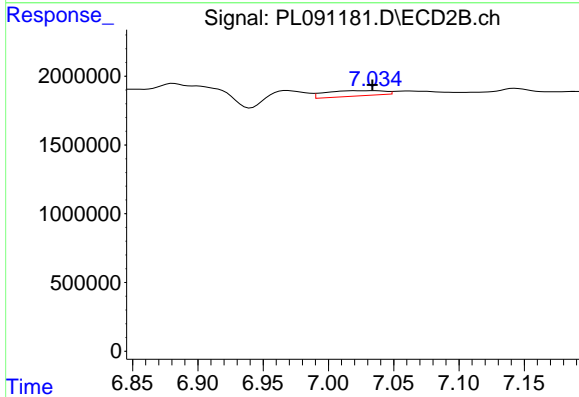
#21 Endrin ketone

R.T.: 6.882 min  
 Delta R.T.: 0.029 min  
 Response: 431184  
 Conc: 0.20 ng/ml

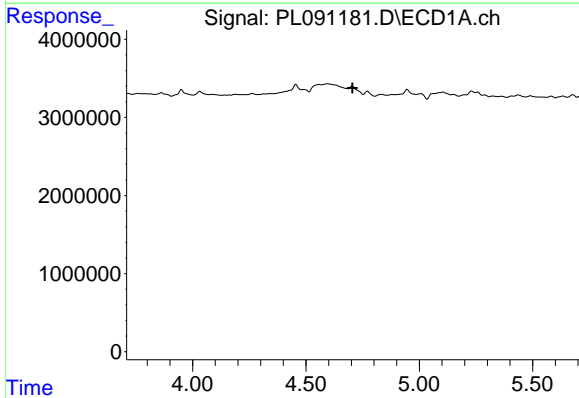


#22 Mirex  
 R.T.: 0.000 min  
 Exp R.T.: 8.118 min  
 Response: 0  
 Conc: N.D.

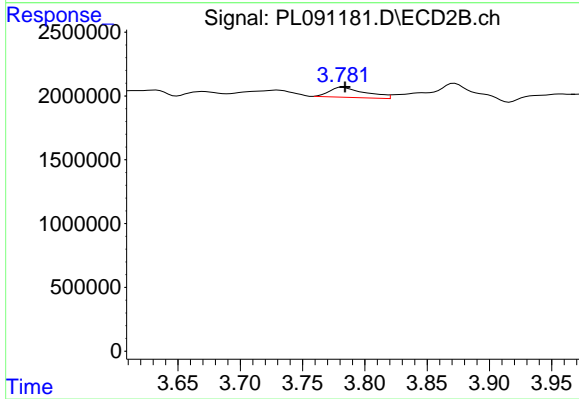
Instrument :  
 ECD\_L  
 ClientSampleId :  
 OU4-TS-07-080724RE



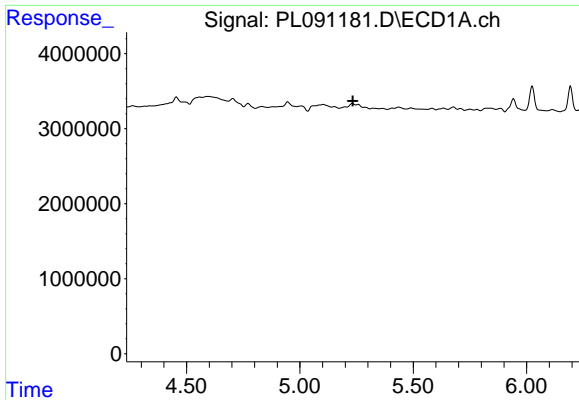
#22 Mirex  
 R.T.: 7.035 min  
 Delta R.T.: 0.001 min  
 Response: 1235169  
 Conc: 0.66 ng/ml



#23 Chlordane-1  
 R.T.: 0.000 min  
 Exp R.T.: 4.706 min  
 Response: 0  
 Conc: N.D.



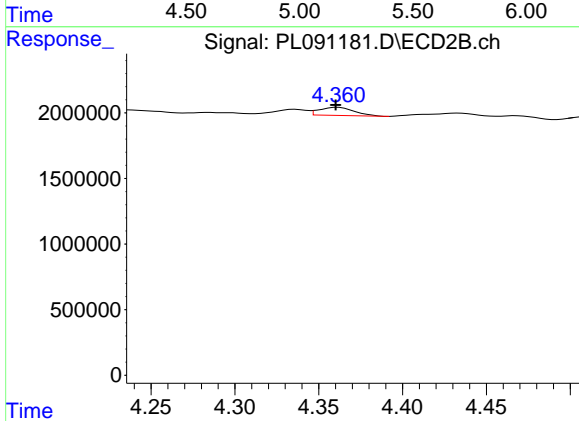
#23 Chlordane-1  
 R.T.: 3.782 min  
 Delta R.T.: -0.002 min  
 Response: 1571409  
 Conc: 21.55 ng/ml



#24 Chlordane-2

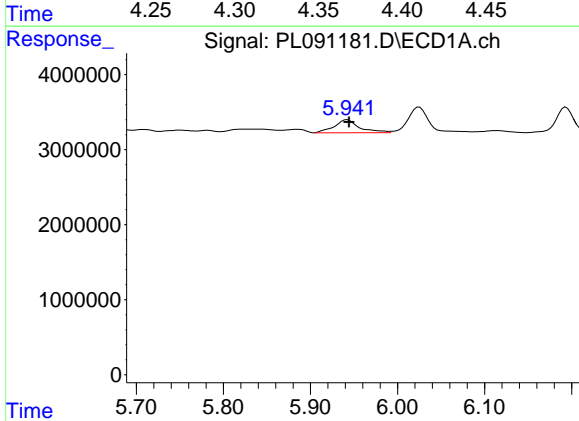
R.T.: 0.000 min  
 Exp R.T.: 5.234 min  
 Response: 0  
 Conc: N.D.

Instrument :  
 ECD\_L  
 ClientSampleId :  
 OU4-TS-07-080724RE



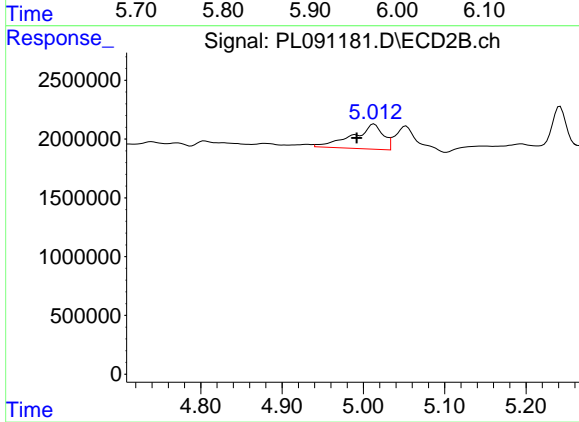
#24 Chlordane-2

R.T.: 4.362 min  
 Delta R.T.: 0.001 min  
 Response: 890729  
 Conc: 9.48 ng/ml



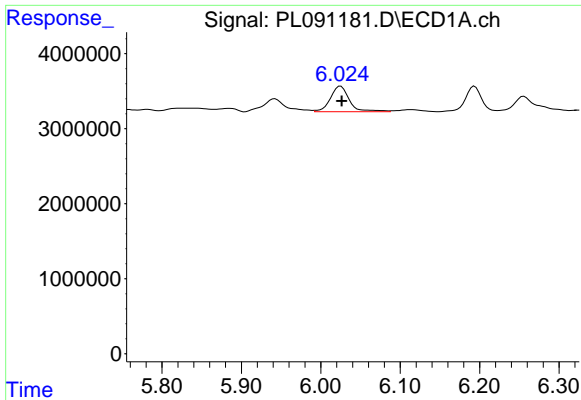
#25 Chlordane-3

R.T.: 5.942 min  
 Delta R.T.: -0.002 min  
 Response: 3483818  
 Conc: 10.03 ng/ml



#25 Chlordane-3

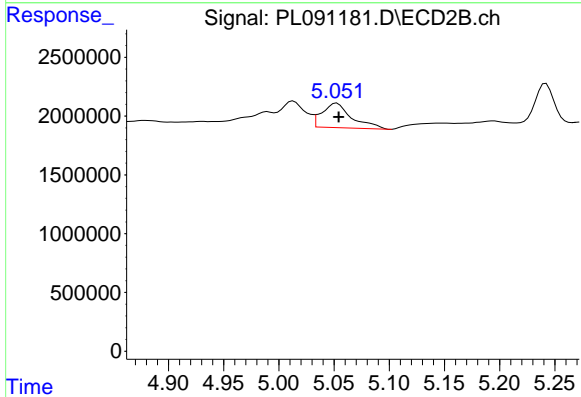
R.T.: 5.013 min  
 Delta R.T.: 0.021 min  
 Response: 5578264  
 Conc: 22.97 ng/ml



#26 Chlordane-4

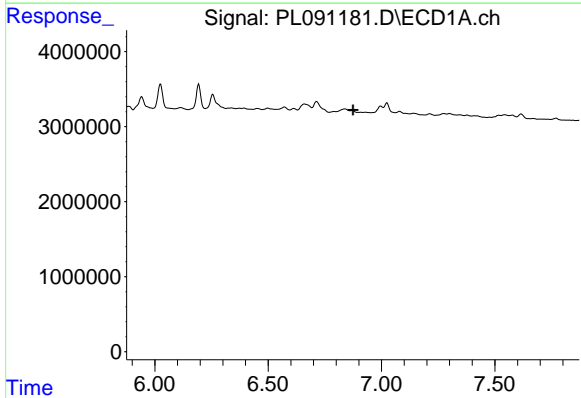
R.T.: 6.025 min  
 Delta R.T.: -0.002 min  
 Response: 5687816  
 Conc: 13.52 ng/ml

Instrument :  
 ECD\_L  
 ClientSampleId :  
 OU4-TS-07-080724RE



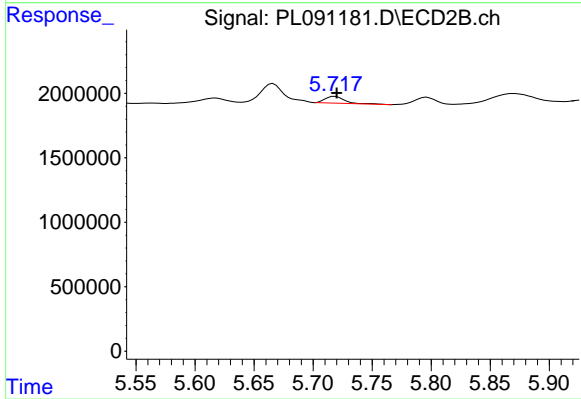
#26 Chlordane-4

R.T.: 5.052 min  
 Delta R.T.: -0.002 min  
 Response: 3895513  
 Conc: 16.71 ng/ml



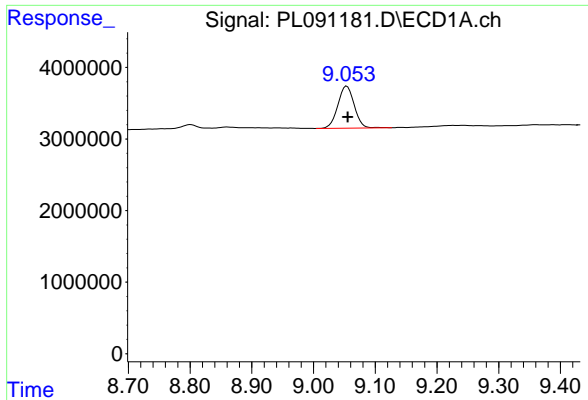
#27 Chlordane-5

R.T.: 0.000 min  
 Exp R.T. : 6.875 min  
 Response: 0  
 Conc: N.D.



#27 Chlordane-5

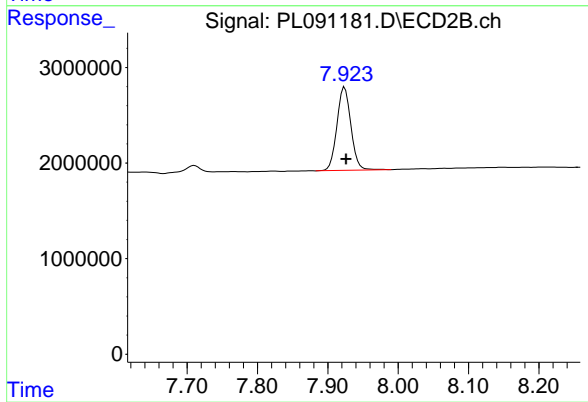
R.T.: 5.719 min  
 Delta R.T.: -0.002 min  
 Response: 599700  
 Conc: 8.66 ng/ml



#28 Decachlorobiphenyl

R.T.: 9.054 min  
Delta R.T.: -0.001 min  
Response: 10859965  
Conc: 7.12 ng/ml

Instrument :  
ECD\_L  
ClientSampleId :  
OU4-TS-07-080724RE



#28 Decachlorobiphenyl

R.T.: 7.924 min  
Delta R.T.: -0.002 min  
Response: 12043620  
Conc: 6.36 ng/ml