

Data Path : Z:\pestpcbsrv\HPCHEM1\ECD_L\Data\PL081722\
 Data File : PL077156.D
 Signal(s) : Signal #1: ECD1A.ch Signal #2: ECD2B.ch
 Acq On : 17 Aug 2022 09:39
 Operator : AR\AJ
 Sample : PB146907BL
 Misc :
 ALS Vial : 5 Sample Multiplier: 1

Integration File signal 1: autoint1.e
 Integration File signal 2: autoint2.e
 Quant Time: Aug 18 00:10:52 2022
 Quant Method : Z:\pestpcbsrv\HPCHEM1\ECD_L\methods\PL072122CLP.M
 Quant Title : GC Extractables
 QLast Update : Mon Jul 25 05:54:24 2022
 Response via : Initial Calibration
 Integrator: ChemStation

Volume Inj. : 1 µl
 Signal #1 Phase : ZB-MR2 Signal #2 Phase: ZB-MR1
 Signal #1 Info : 30M x 0.32mm x0.2 Signal #2 Info : 30M x 0.32mm x 0.50µm

Compound	RT#1	RT#2	Resp#1	Resp#2	ng/ml	ng/ml

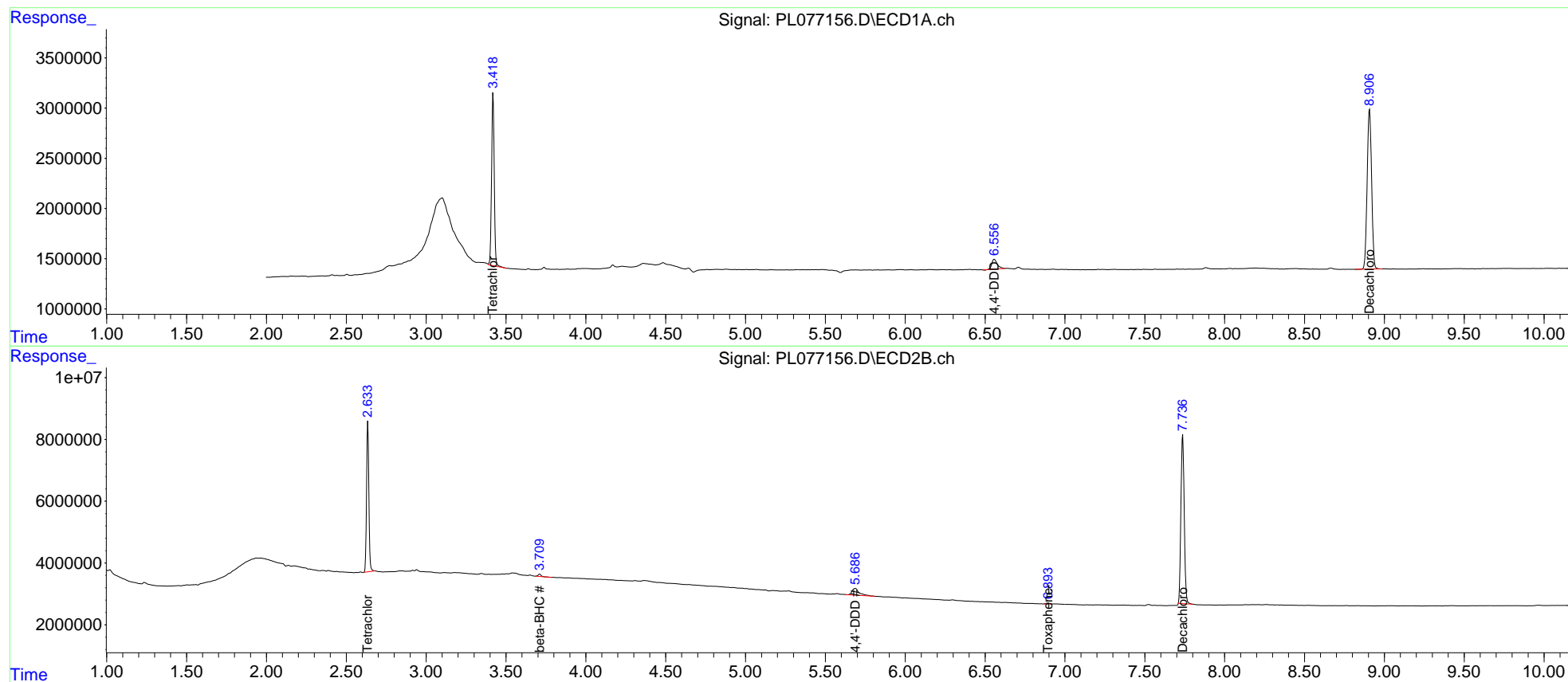
System Monitoring Compounds						
1) SA Tetrachlo...	3.419	2.635	19542038	48009097	21.566	20.476
27) SA Decachlor...	8.907	7.737	31047576	77581916	39.650	38.635
Target Compounds						
6) B beta-BHC	0.000	3.711f	0	967877	N.D.	0.673
16) A 4,4'-DDD	6.558f	5.687f	2327874	6627374	3.022	3.489
25) Toxaphene-4	0.000	6.894	0	447048	N.D.	11.357

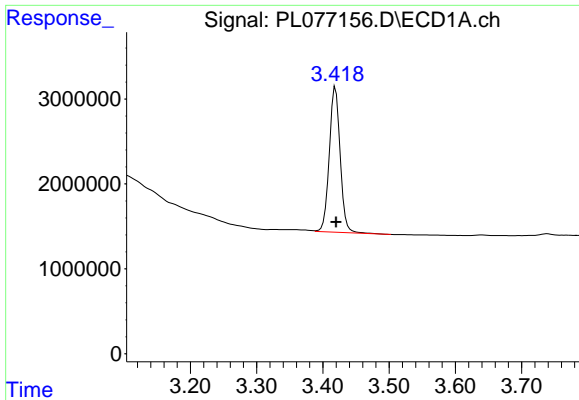
(f)=RT Delta > 1/2 Window (#)=Amounts differ by > 25% (m)=manual int.

Data Path : Z:\pestpcbsrv\HPCHEM1\ECD_L\Data\PL081722\
 Data File : PL077156.D
 Signal(s) : Signal #1: ECD1A.ch Signal #2: ECD2B.ch
 Acq On : 17 Aug 2022 09:39
 Operator : AR\AJ
 Sample : PB146907BL
 Misc :
 ALS Vial : 5 Sample Multiplier: 1

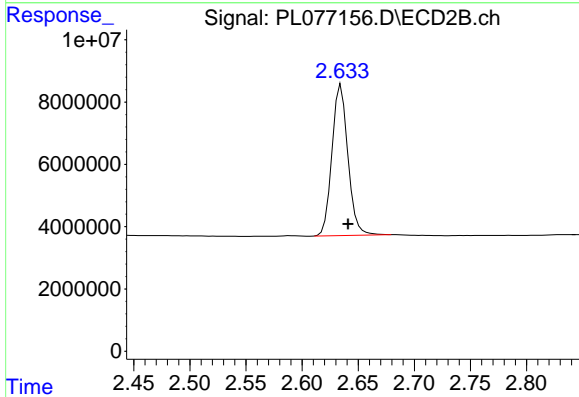
Integration File signal 1: autoint1.e
 Integration File signal 2: autoint2.e
 Quant Time: Aug 18 00:10:52 2022
 Quant Method : Z:\pestpcbsrv\HPCHEM1\ECD_L\methods\PL072122CLP.M
 Quant Title : GC Extractables
 QLast Update : Mon Jul 25 05:54:24 2022
 Response via : Initial Calibration
 Integrator: ChemStation

Volume Inj. : 1 µl
 Signal #1 Phase : ZB-MR2 Signal #2 Phase: ZB-MR1
 Signal #1 Info : 30M x 0.32mm x0.2 Signal #2 Info : 30M x 0.32mm x 0.50µm

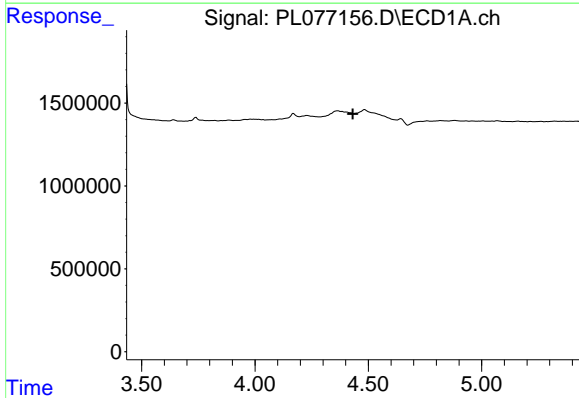




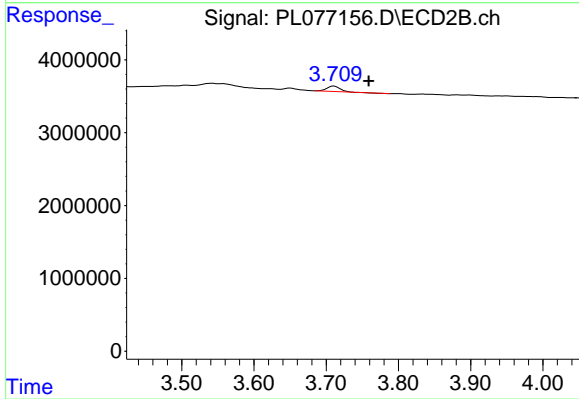
#1 Tetrachloro-m-xylene
 R.T.: 3.419 min
 Delta R.T.: 0.000 min
 Response: 19542038
 Conc: 21.57 ng/ml



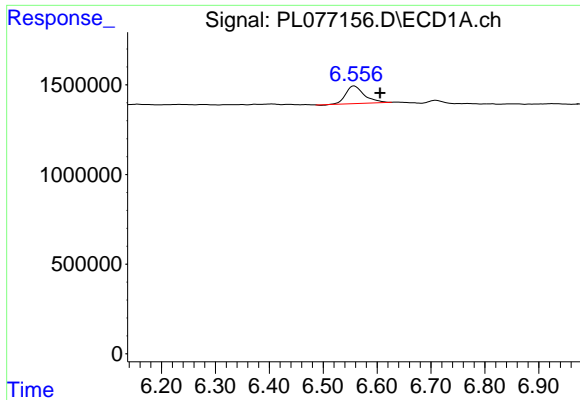
#1 Tetrachloro-m-xylene
 R.T.: 2.635 min
 Delta R.T.: -0.006 min
 Response: 48009097
 Conc: 20.48 ng/ml



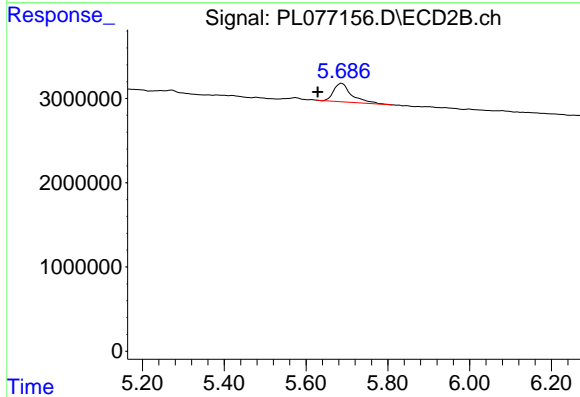
#6 beta-BHC
 R.T.: 0.000 min
 Exp R.T. : 4.431 min
 Response: 0
 Conc: N.D.



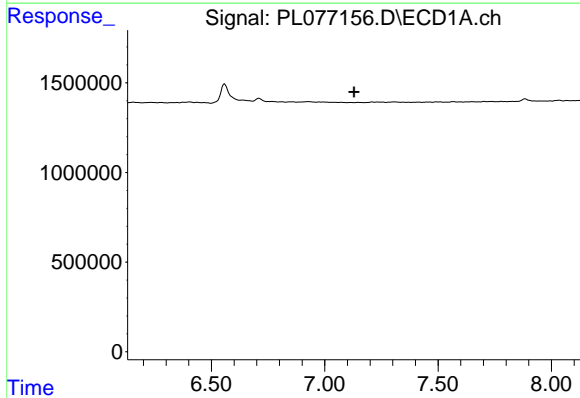
#6 beta-BHC
 R.T.: 3.711 min
 Delta R.T.: -0.048 min
 Response: 967877
 Conc: 0.67 ng/ml



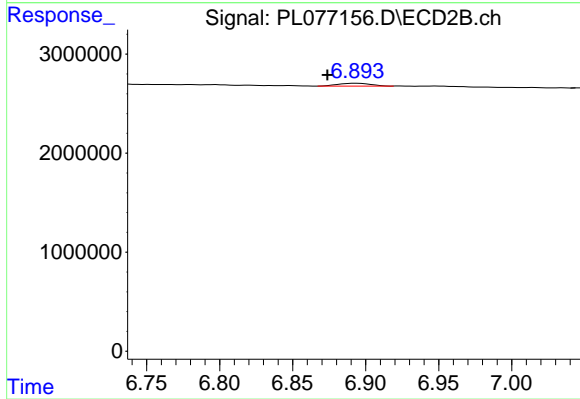
#16 4,4'-DDD
 R.T.: 6.558 min
 Delta R.T.: -0.048 min
 Response: 2327874
 Conc: 3.02 ng/ml



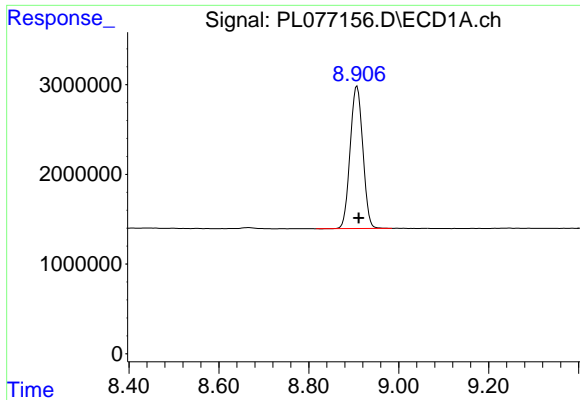
#16 4,4'-DDD
 R.T.: 5.687 min
 Delta R.T.: 0.058 min
 Response: 6627374
 Conc: 3.49 ng/ml



#25 Toxaphene-4
 R.T.: 0.000 min
 Exp R.T. : 7.130 min
 Response: 0
 Conc: N.D.

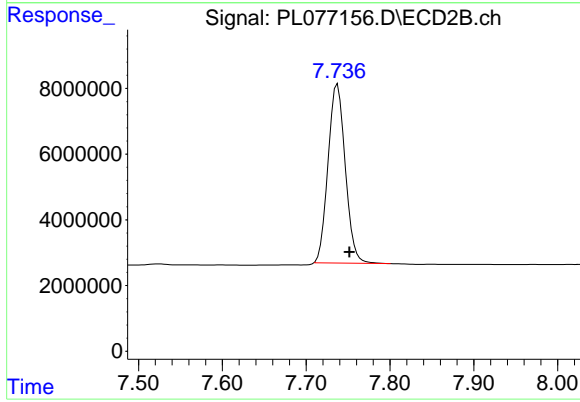


#25 Toxaphene-4
 R.T.: 6.894 min
 Delta R.T.: 0.020 min
 Response: 447048
 Conc: 11.36 ng/ml



#27 Decachlorobiphenyl

R.T.: 8.907 min
Delta R.T.: -0.004 min
Response: 31047576
Conc: 39.65 ng/ml



#27 Decachlorobiphenyl

R.T.: 7.737 min
Delta R.T.: -0.014 min
Response: 77581916
Conc: 38.63 ng/ml