

Data Path : Z:\pestpcbsrv\HPCHEM1\ECD_L\Data\PL081820\
 Data File : PL060794.D
 Signal(s) : Signal #1: ECD1A.ch Signal #2: ECD2B.ch
 Acq On : 18 Aug 2020 14:31
 Operator : DD\AJ
 Sample : PSTDCCC050
 Misc :
 ALS Vial : 4 Sample Multiplier: 1

Integration File signal 1: autoint1.e
 Integration File signal 2: autoint2.e
 Quant Time: Aug 19 02:37:49 2020
 Quant Method : Z:\pestpcbsrv\HPCHEM1\ECD_L\methods\PL081820.M
 Quant Title : GC Extractables
 QLast Update : Wed Aug 19 02:25:28 2020
 Response via : Initial Calibration
 Integrator: ChemStation

Volume Inj. : 1 µl
 Signal #1 Phase : ZB-MR2 Signal #2 Phase: ZB-MR1
 Signal #1 Info : 30M x 0.32mm x0.2 Signal #2 Info : 30M x 0.32mm x0.5µm

Compound	RT#1	RT#2	Resp#1	Resp#2	ng/ml	ng/ml

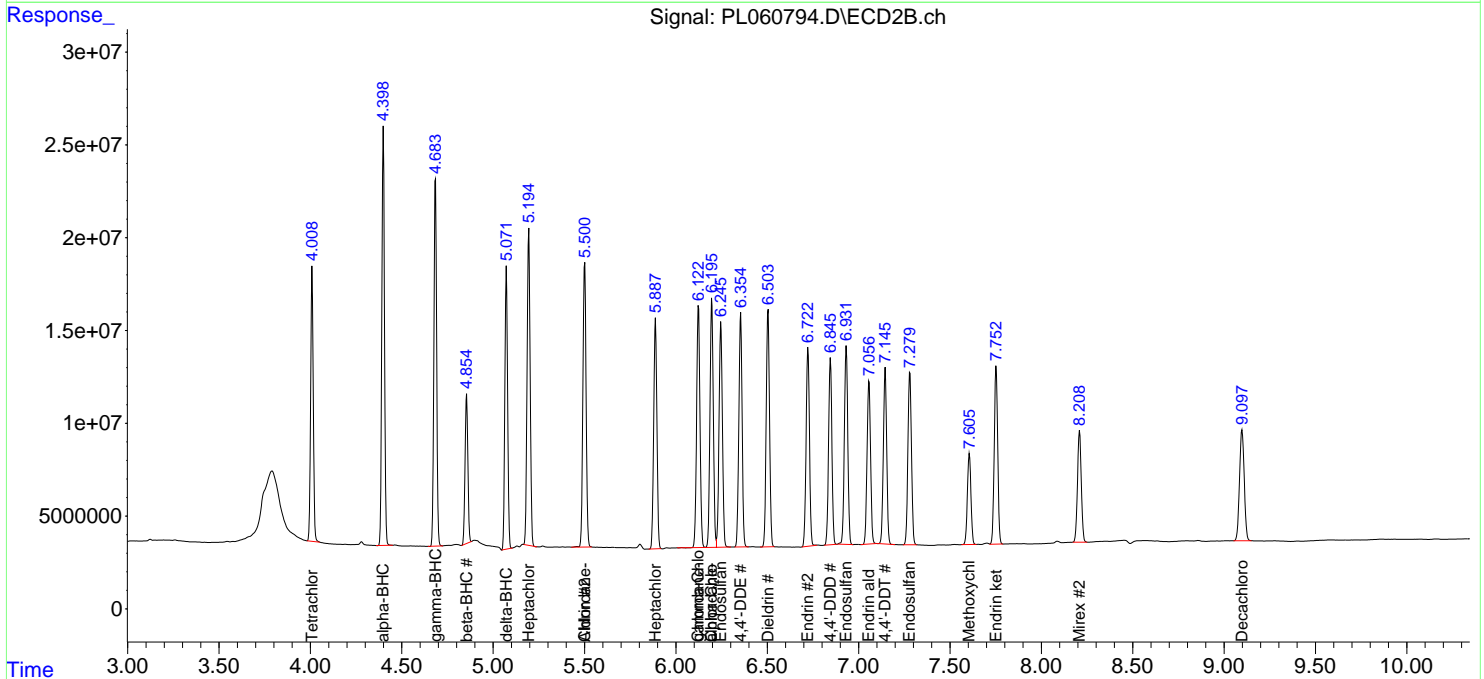
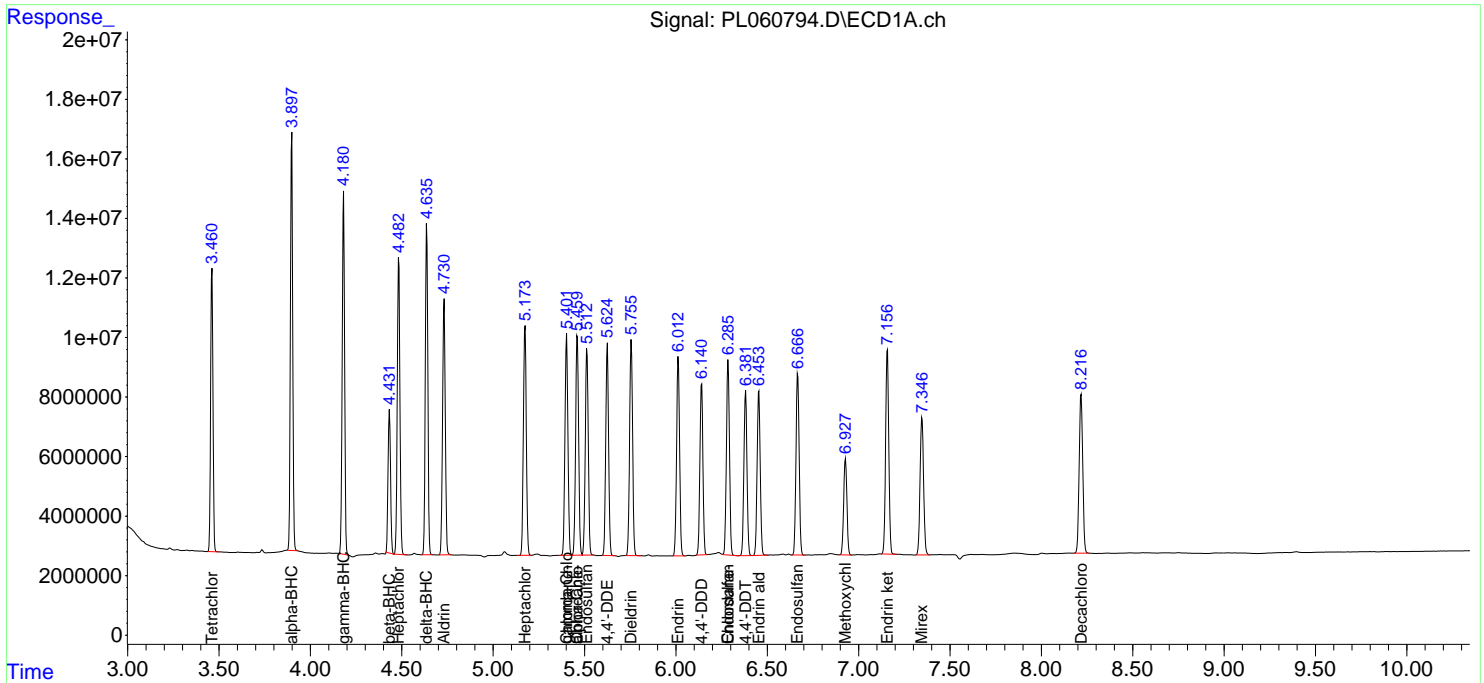
System Monitoring Compounds						
1) SA Tetrachlo...	3.461	4.009	83792664	147.0E6	50.193	52.863
28) SA Decachlor...	8.218	9.098	72535842	106.8E6	50.780	52.859
Target Compounds						
2) A alpha-BHC	3.898	4.399	124.5E6	228.5E6	51.134	53.786
3) MA gamma-BHC...	4.182	4.684	112.1E6	211.0E6	51.683	53.528
4) MA Heptachlor	4.484	5.195	100.9E6	198.9E6	50.844	52.917
5) MB Aldrin	4.732	5.501	89122675	185.2E6	51.101	53.815
6) B beta-BHC	4.432	4.855	45301497	86632068	50.425	53.618
7) B delta-BHC	4.637	5.073	105.0E6	161.4E6	51.634	54.778
8) B Heptachlo...	5.175	5.889	85072935	151.6E6	50.466	54.236
9) A Endosulfan I	5.514	6.247	78284452	156.0E6	50.725	52.731
10) B gamma-Chl...	5.402	6.124	83740365	168.3E6	50.899	55.132
11) B alpha-Chl...	5.461	6.197	83791167	169.8E6	50.885	53.856
12) B 4,4'-DDE	5.625	6.355	77111472	157.2E6	50.006	51.915
13) MA Dieldrin	5.756	6.505	81958997	161.9E6	50.986	52.618
14) MA Endrin	6.013	6.723	75887833	136.4E6	50.160	52.493
15) B Endosulfa...	6.286	6.933	75738547	138.2E6	50.226	52.974
16) A 4,4'-DDD	6.141	6.846	65342071	125.7E6	51.002	53.905
17) MA 4,4'-DDT	6.382	7.146	64190370	120.2E6	53.530	55.375
18) B Endrin al...	6.454	7.057	65520682	117.5E6	50.806	54.289
19) B Endosulfa...	6.667	7.281	73601359	126.6E6	50.746	53.340
20) A Methoxychlor	6.928	7.606	39749817	66228536	52.516	52.926
21) B Endrin ke...	7.158	7.753	83219268	126.0E6	53.576	54.656
22) Mirex	7.347	8.209	61456427	87179090	51.334	53.968
24) Chlordane-2	0.000	5.501f	0	185.2E6	N.D.	1719.642 #
25) Chlordane-3	5.402	6.124	83740365	168.3E6	599.401	417.367 #
26) Chlordane-4	5.461	6.197	83791167	169.8E6	731.735	344.457 #
27) Chlordane-5	6.286	0.000	75738547	0	1519.566	N.D. #

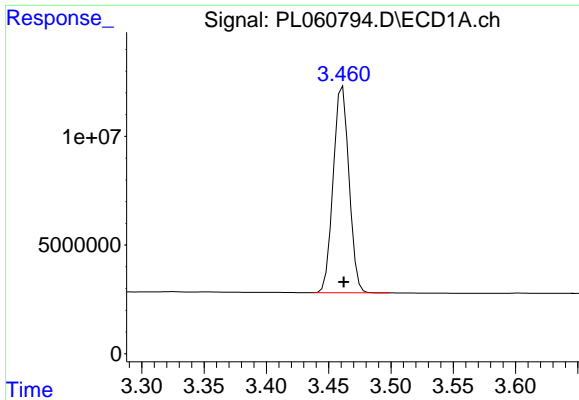
(f)=RT Delta > 1/2 Window (#)=Amounts differ by > 25% (m)=manual int.

Data Path : Z:\pestpcbsrv\HPCHEM1\ECD_L\Data\PL081820\
 Data File : PL060794.D
 Signal(s) : Signal #1: ECD1A.ch Signal #2: ECD2B.ch
 Acq On : 18 Aug 2020 14:31
 Operator : DD\AJ
 Sample : PSTDCCC050
 Misc :
 ALS Vial : 4 Sample Multiplier: 1

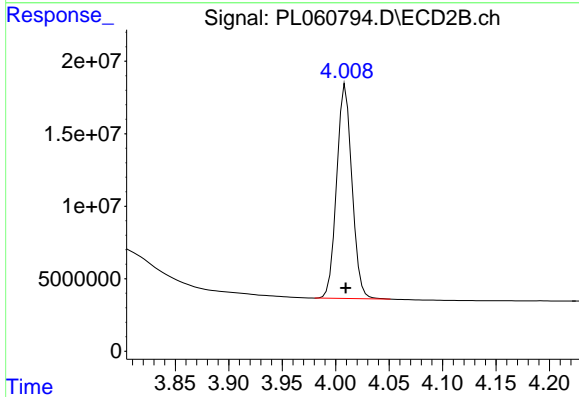
Integration File signal 1: autoint1.e
 Integration File signal 2: autoint2.e
 Quant Time: Aug 19 02:37:49 2020
 Quant Method : Z:\pestpcbsrv\HPCHEM1\ECD_L\methods\PL081820.M
 Quant Title : GC Extractables
 QLast Update : Wed Aug 19 02:25:28 2020
 Response via : Initial Calibration
 Integrator: ChemStation

Volume Inj. : 1 µl
 Signal #1 Phase : ZB-MR2 Signal #2 Phase: ZB-MR1
 Signal #1 Info : 30M x 0.32mm x0.2 Signal #2 Info : 30M x 0.32mm x0.5µm

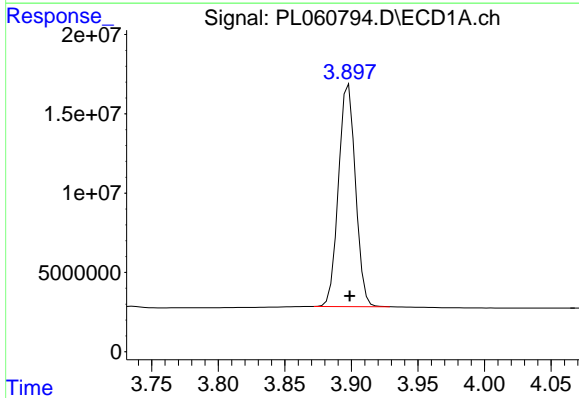




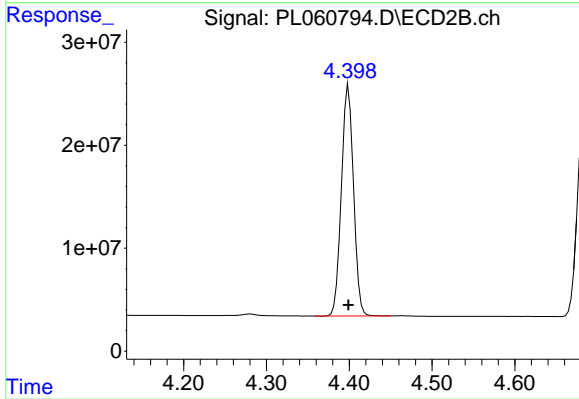
#1 Tetrachloro-m-xylene
 R.T.: 3.461 min
 Delta R.T.: 0.000 min
 Response: 83792664
 Conc: 50.19 ng/ml



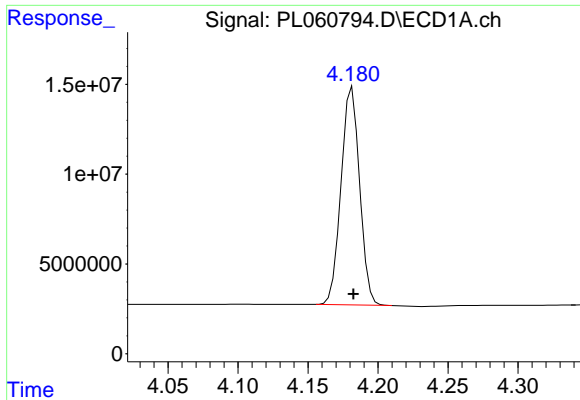
#1 Tetrachloro-m-xylene
 R.T.: 4.009 min
 Delta R.T.: 0.000 min
 Response: 147048343
 Conc: 52.86 ng/ml



#2 alpha-BHC
 R.T.: 3.898 min
 Delta R.T.: 0.000 min
 Response: 124522875
 Conc: 51.13 ng/ml

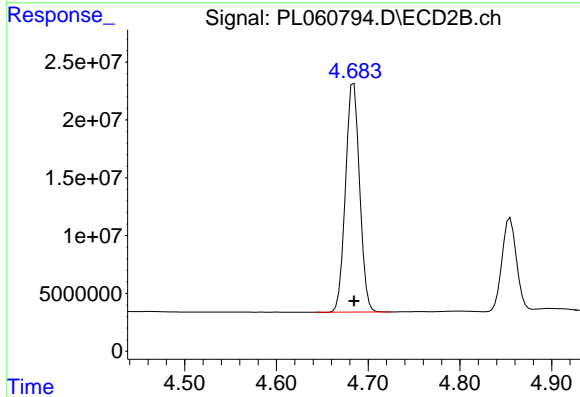


#2 alpha-BHC
 R.T.: 4.399 min
 Delta R.T.: 0.000 min
 Response: 228486486
 Conc: 53.79 ng/ml



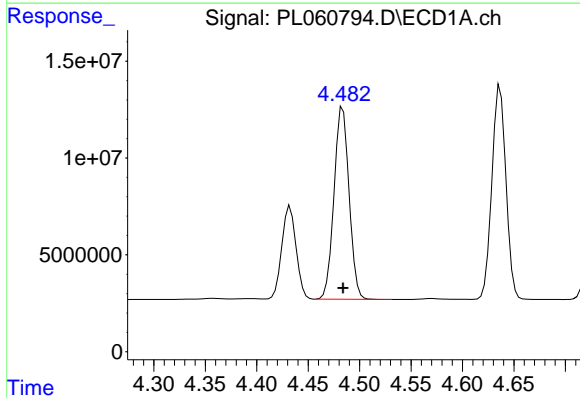
#3 gamma-BHC (Lindane)

R.T.: 4.182 min
Delta R.T.: 0.000 min
Response: 112116310
Conc: 51.68 ng/ml



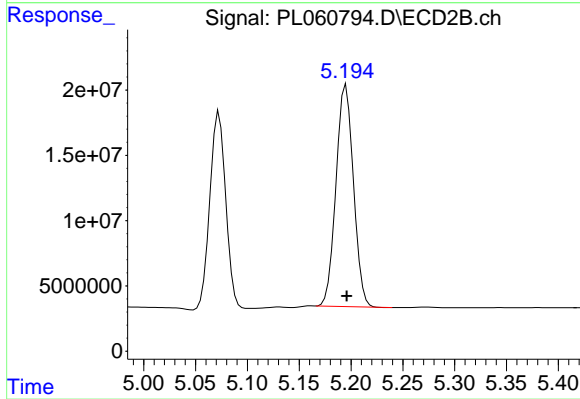
#3 gamma-BHC (Lindane)

R.T.: 4.684 min
Delta R.T.: 0.000 min
Response: 211001346
Conc: 53.53 ng/ml



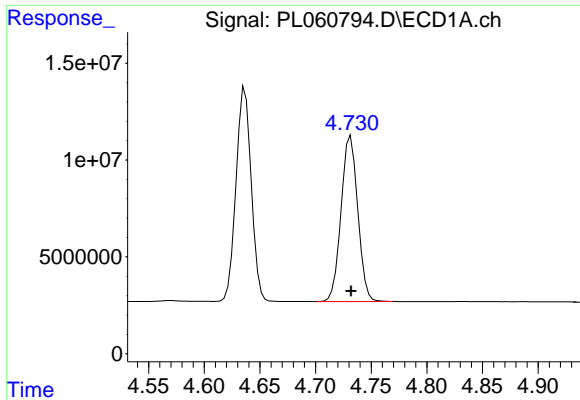
#4 Heptachlor

R.T.: 4.484 min
Delta R.T.: 0.000 min
Response: 100923663
Conc: 50.84 ng/ml



#4 Heptachlor

R.T.: 5.195 min
Delta R.T.: 0.000 min
Response: 198870798
Conc: 52.92 ng/ml



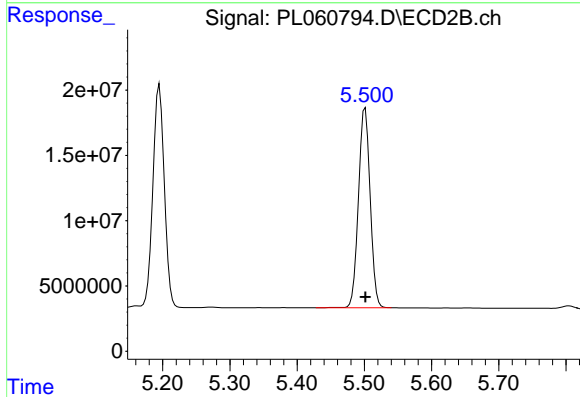
#5 Aldrin

R.T.: 4.732 min

Delta R.T.: 0.000 min

Response: 89122675

Conc: 51.10 ng/ml



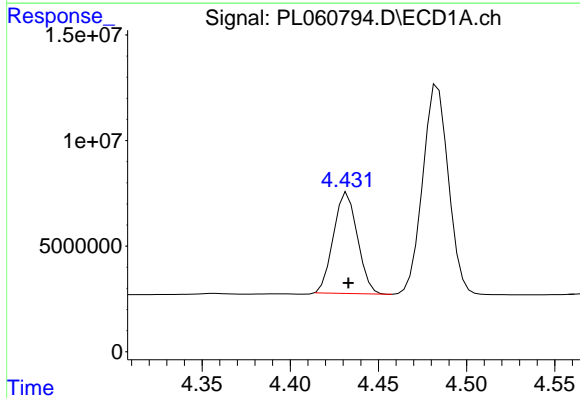
#5 Aldrin

R.T.: 5.501 min

Delta R.T.: 0.000 min

Response: 185202501

Conc: 53.82 ng/ml



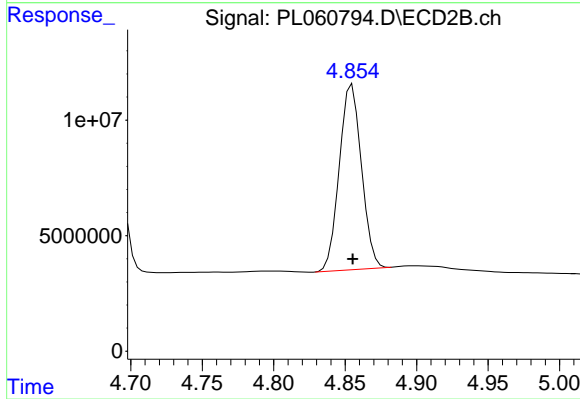
#6 beta-BHC

R.T.: 4.432 min

Delta R.T.: 0.000 min

Response: 45301497

Conc: 50.43 ng/ml



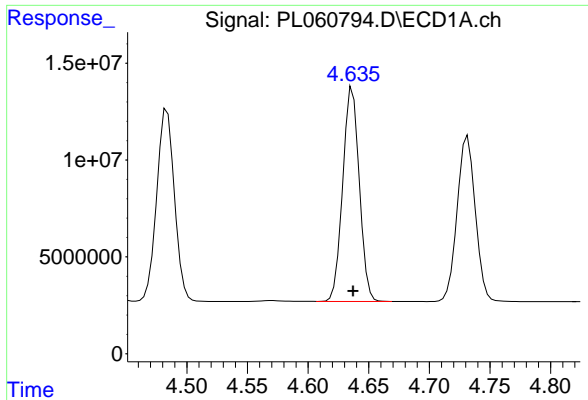
#6 beta-BHC

R.T.: 4.855 min

Delta R.T.: 0.000 min

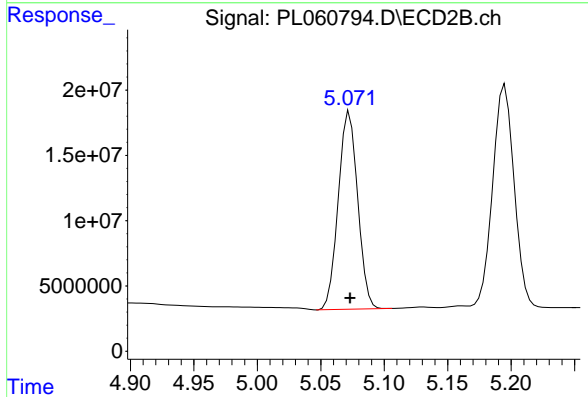
Response: 86632068

Conc: 53.62 ng/ml



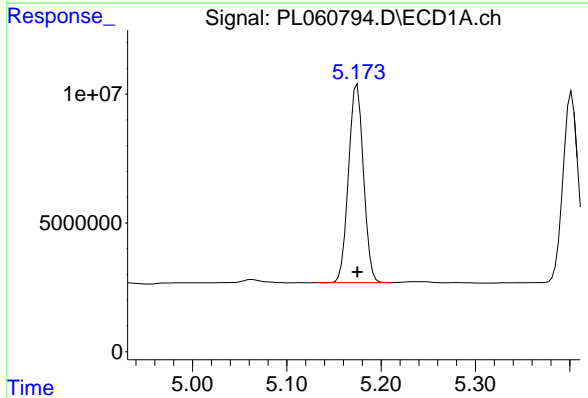
#7 delta-BHC

R.T.: 4.637 min
Delta R.T.: 0.000 min
Response: 104980174
Conc: 51.63 ng/ml



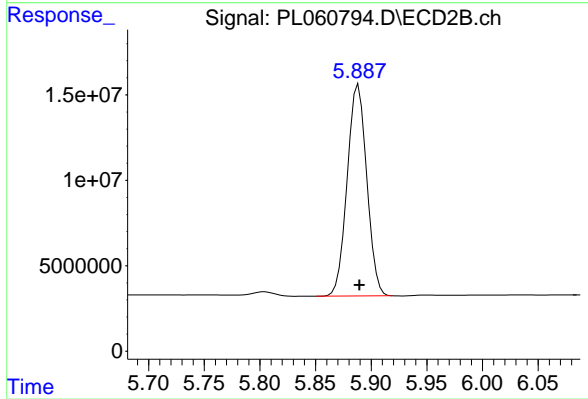
#7 delta-BHC

R.T.: 5.073 min
Delta R.T.: 0.000 min
Response: 161358465
Conc: 54.78 ng/ml



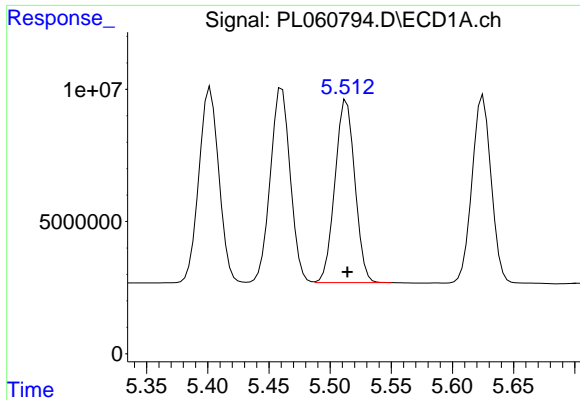
#8 Heptachlor epoxide

R.T.: 5.175 min
Delta R.T.: 0.000 min
Response: 85072935
Conc: 50.47 ng/ml

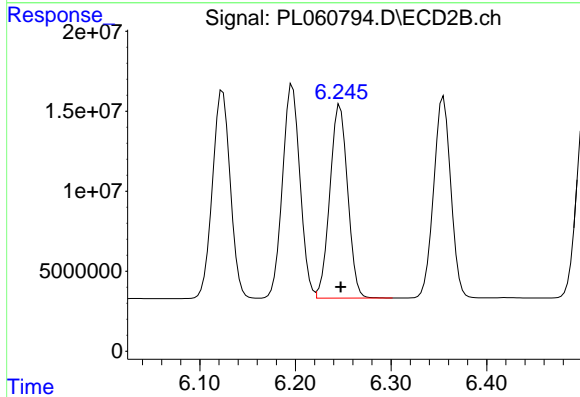


#8 Heptachlor epoxide

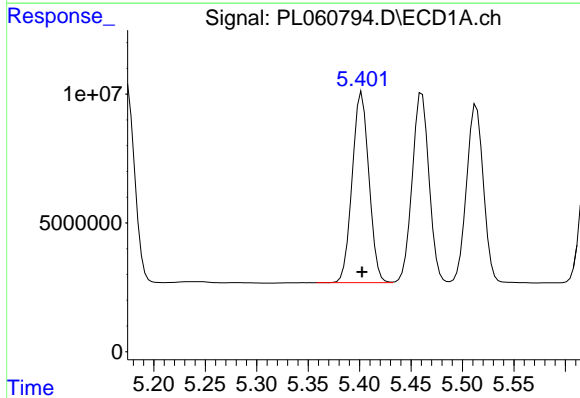
R.T.: 5.889 min
Delta R.T.: 0.000 min
Response: 151606766
Conc: 54.24 ng/ml



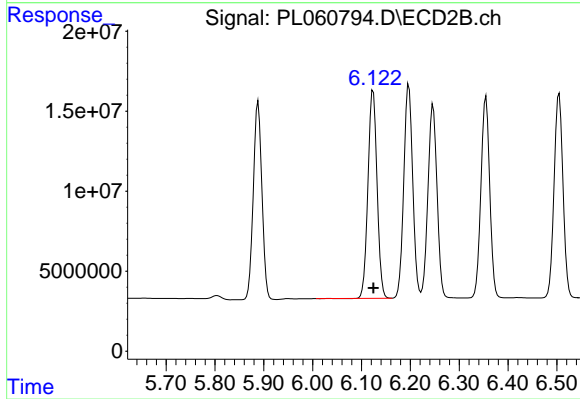
#9 Endosulfan I
 R.T.: 5.514 min
 Delta R.T.: 0.000 min
 Response: 78284452
 Conc: 50.73 ng/ml



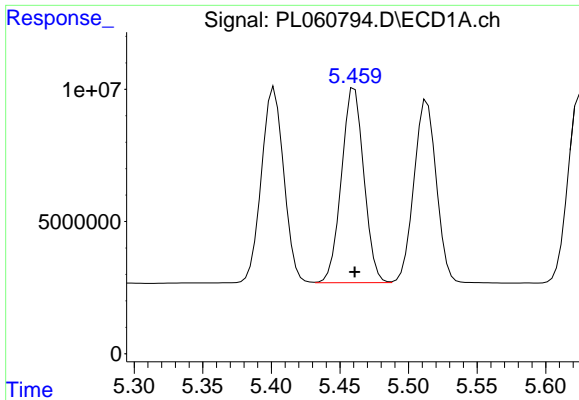
#9 Endosulfan I
 R.T.: 6.247 min
 Delta R.T.: 0.000 min
 Response: 155997410
 Conc: 52.73 ng/ml



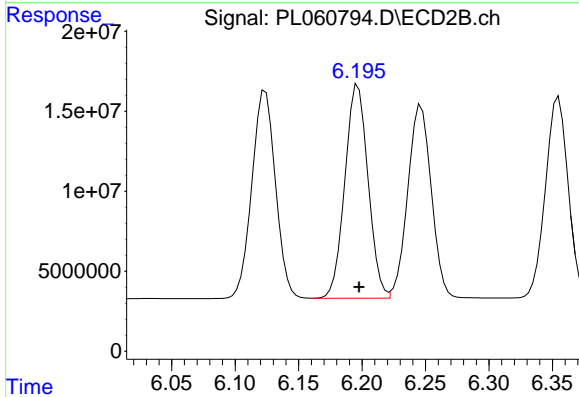
#10 gamma-Chlordane
 R.T.: 5.402 min
 Delta R.T.: 0.000 min
 Response: 83740365
 Conc: 50.90 ng/ml



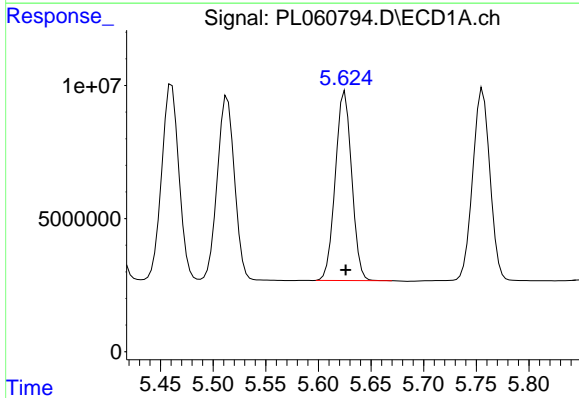
#10 gamma-Chlordane
 R.T.: 6.124 min
 Delta R.T.: 0.000 min
 Response: 168304259
 Conc: 55.13 ng/ml



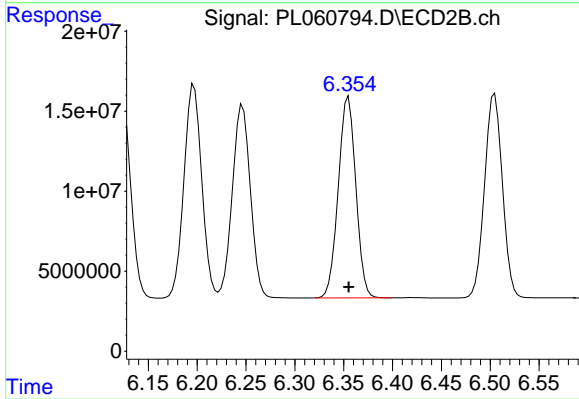
#11 alpha-Chlordane
R.T.: 5.461 min
Delta R.T.: 0.000 min
Response: 83791167
Conc: 50.89 ng/ml



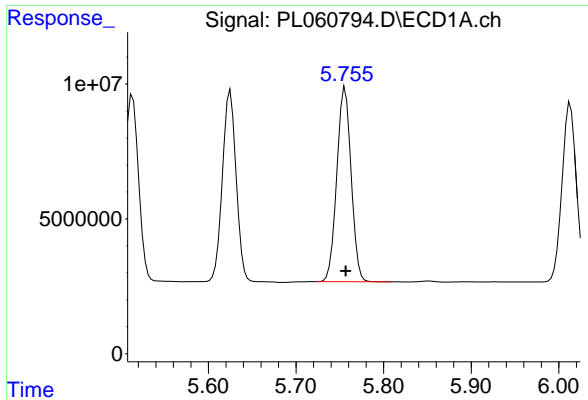
#11 alpha-Chlordane
R.T.: 6.197 min
Delta R.T.: 0.000 min
Response: 169751893
Conc: 53.86 ng/ml



#12 4,4'-DDE
R.T.: 5.625 min
Delta R.T.: 0.000 min
Response: 77111472
Conc: 50.01 ng/ml

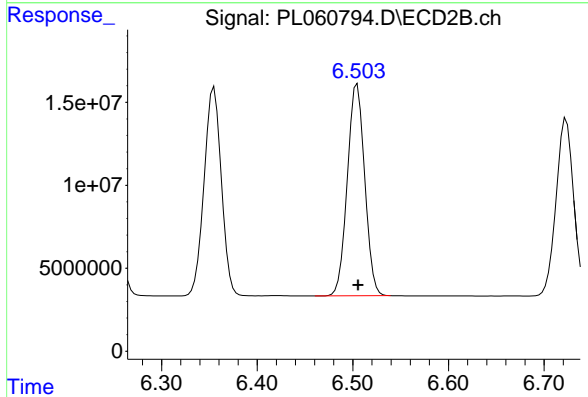


#12 4,4'-DDE
R.T.: 6.355 min
Delta R.T.: 0.000 min
Response: 157168311
Conc: 51.92 ng/ml



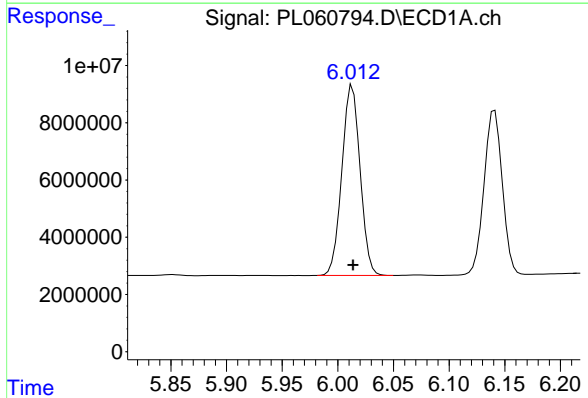
#13 Dieldrin

R.T.: 5.756 min
 Delta R.T.: 0.000 min
 Response: 81958997
 Conc: 50.99 ng/ml



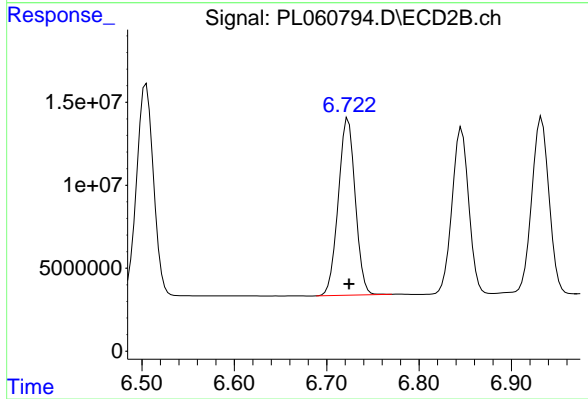
#13 Dieldrin

R.T.: 6.505 min
 Delta R.T.: 0.000 min
 Response: 161936757
 Conc: 52.62 ng/ml



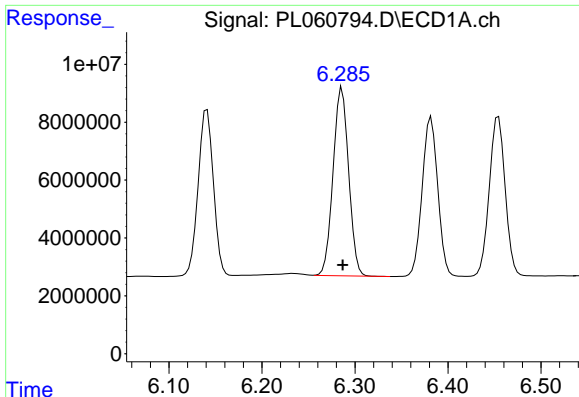
#14 Endrin

R.T.: 6.013 min
 Delta R.T.: 0.000 min
 Response: 75887833
 Conc: 50.16 ng/ml



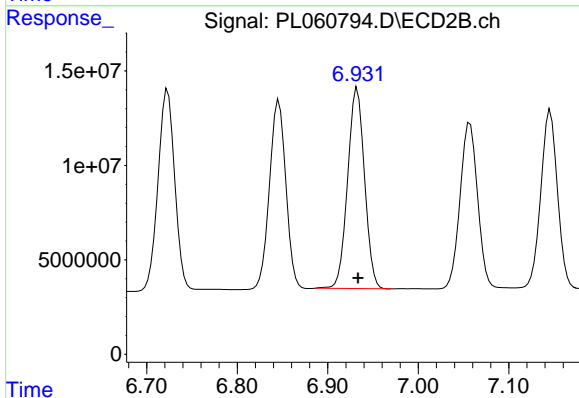
#14 Endrin

R.T.: 6.723 min
 Delta R.T.: 0.000 min
 Response: 136384218
 Conc: 52.49 ng/ml



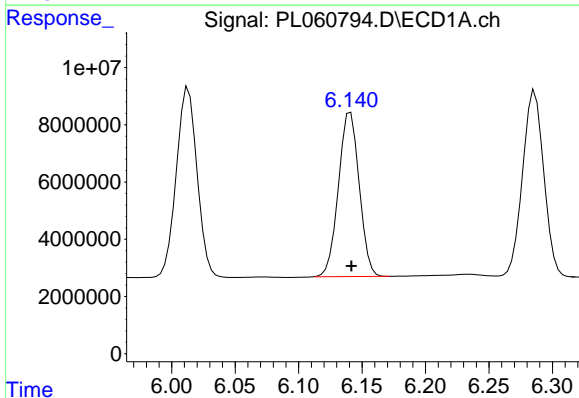
#15 Endosulfan II

R.T.: 6.286 min
Delta R.T.: 0.000 min
Response: 75738547
Conc: 50.23 ng/ml



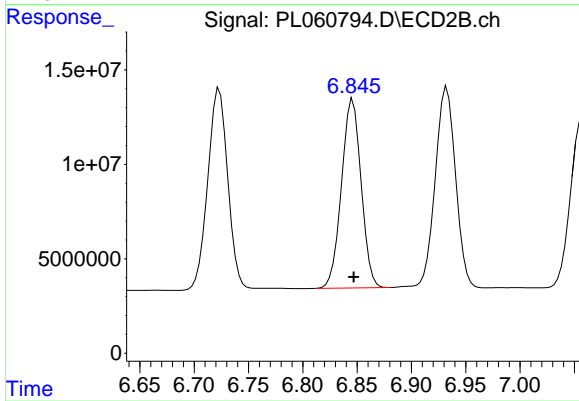
#15 Endosulfan II

R.T.: 6.933 min
Delta R.T.: 0.000 min
Response: 138183912
Conc: 52.97 ng/ml



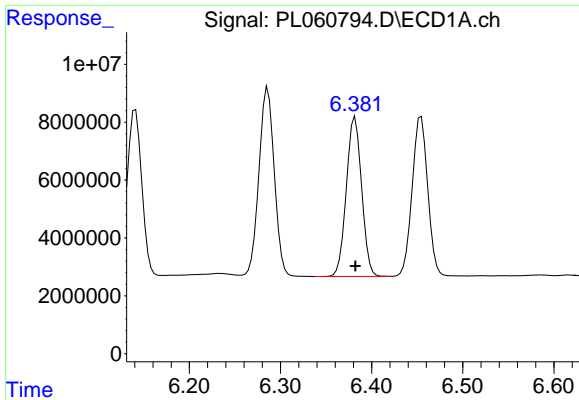
#16 4,4'-DDD

R.T.: 6.141 min
Delta R.T.: 0.000 min
Response: 65342071
Conc: 51.00 ng/ml



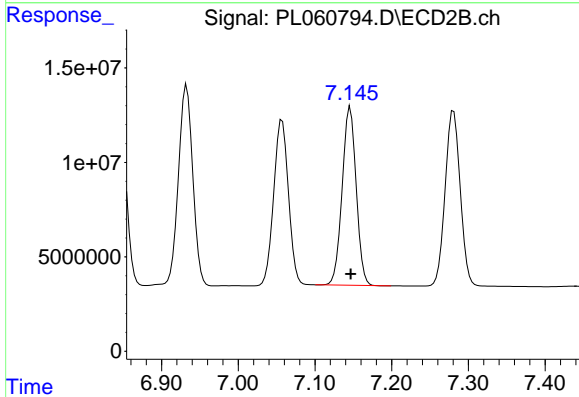
#16 4,4'-DDD

R.T.: 6.846 min
Delta R.T.: 0.000 min
Response: 125724640
Conc: 53.91 ng/ml



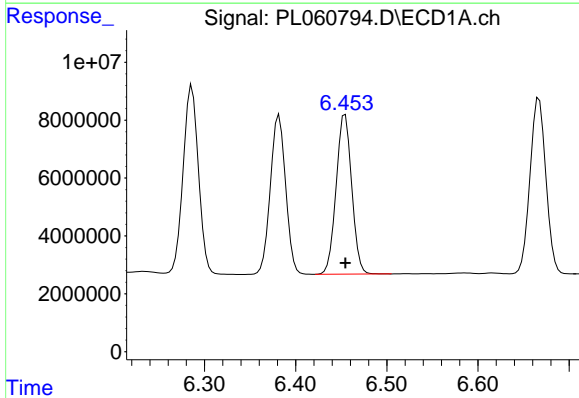
#17 4,4'-DDT

R.T.: 6.382 min
 Delta R.T.: 0.000 min
 Response: 64190370
 Conc: 53.53 ng/ml



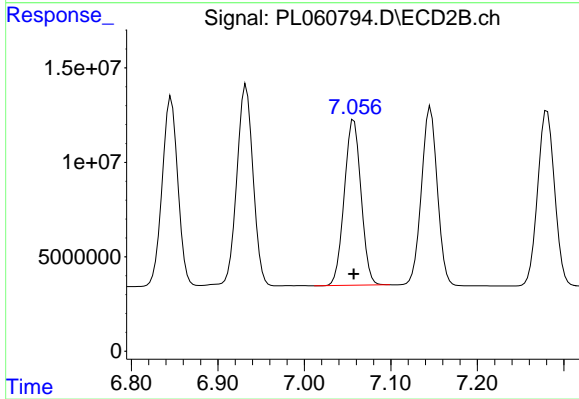
#17 4,4'-DDT

R.T.: 7.146 min
 Delta R.T.: 0.000 min
 Response: 120180018
 Conc: 55.38 ng/ml



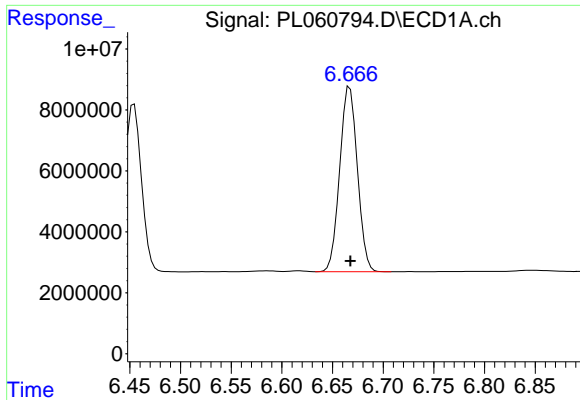
#18 Endrin aldehyde

R.T.: 6.454 min
 Delta R.T.: 0.000 min
 Response: 65520682
 Conc: 50.81 ng/ml

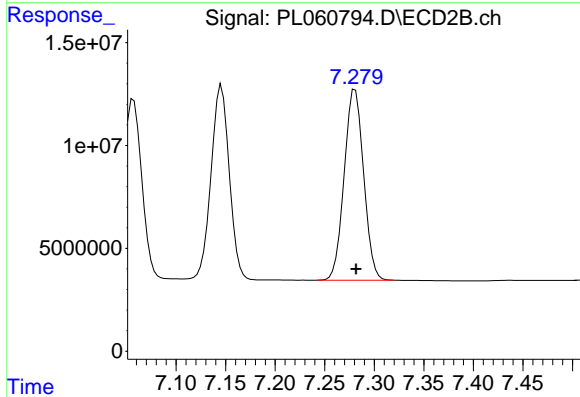


#18 Endrin aldehyde

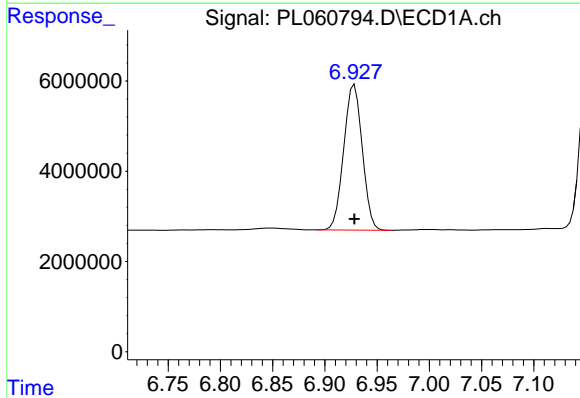
R.T.: 7.057 min
 Delta R.T.: 0.000 min
 Response: 117485791
 Conc: 54.29 ng/ml



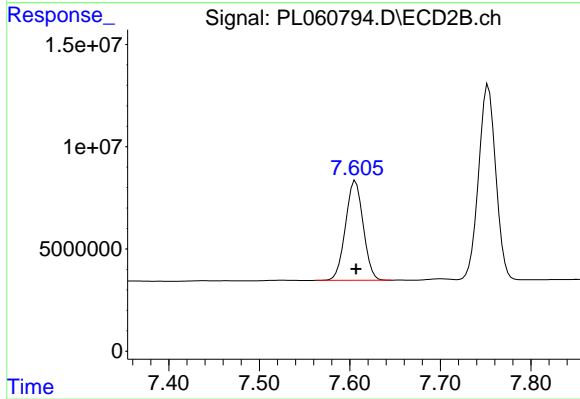
#19 Endosulfan Sulfate
R.T.: 6.667 min
Delta R.T.: 0.000 min
Response: 73601359
Conc: 50.75 ng/ml



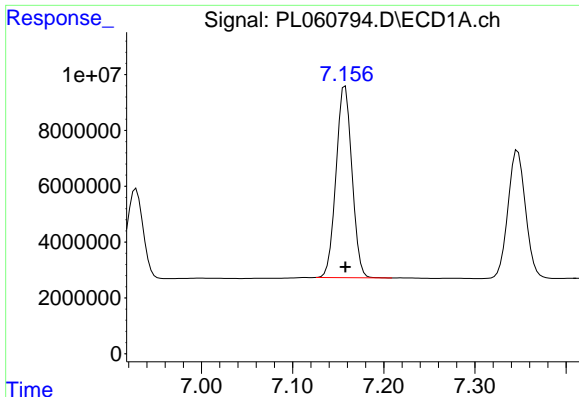
#19 Endosulfan Sulfate
R.T.: 7.281 min
Delta R.T.: 0.000 min
Response: 126553870
Conc: 53.34 ng/ml



#20 Methoxychlor
R.T.: 6.928 min
Delta R.T.: 0.000 min
Response: 39749817
Conc: 52.52 ng/ml

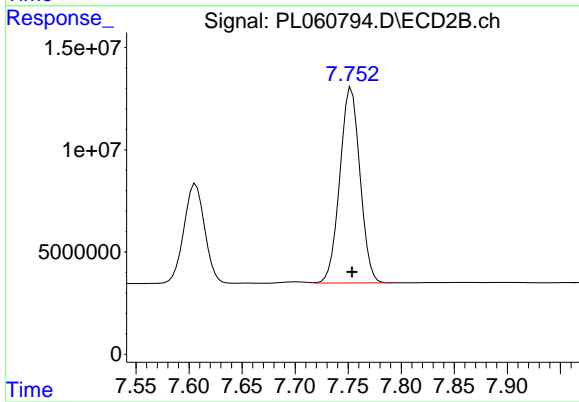


#20 Methoxychlor
R.T.: 7.606 min
Delta R.T.: 0.000 min
Response: 66228536
Conc: 52.93 ng/ml



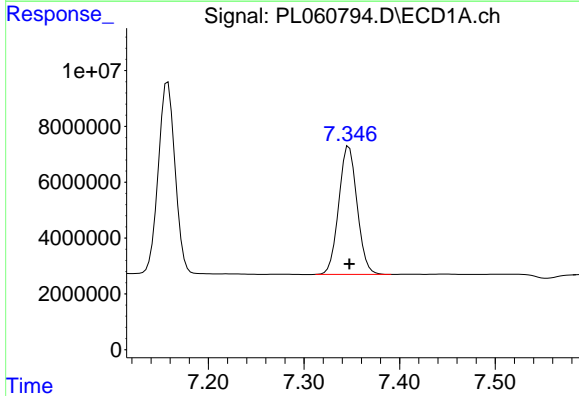
#21 Endrin ketone

R.T.: 7.158 min
Delta R.T.: 0.000 min
Response: 83219268
Conc: 53.58 ng/ml



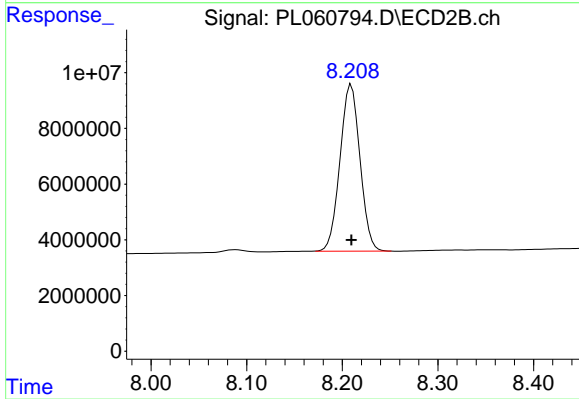
#21 Endrin ketone

R.T.: 7.753 min
Delta R.T.: 0.000 min
Response: 125962062
Conc: 54.66 ng/ml



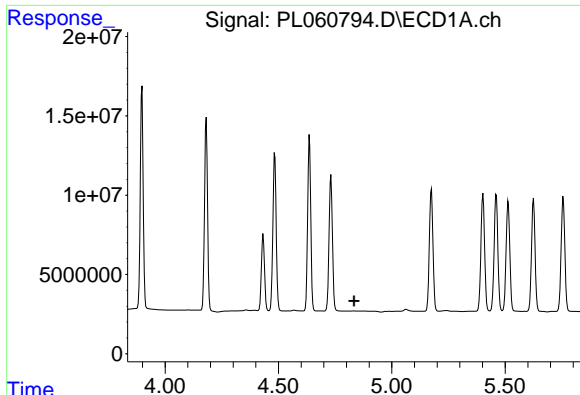
#22 Mirex

R.T.: 7.347 min
Delta R.T.: 0.000 min
Response: 61456427
Conc: 51.33 ng/ml



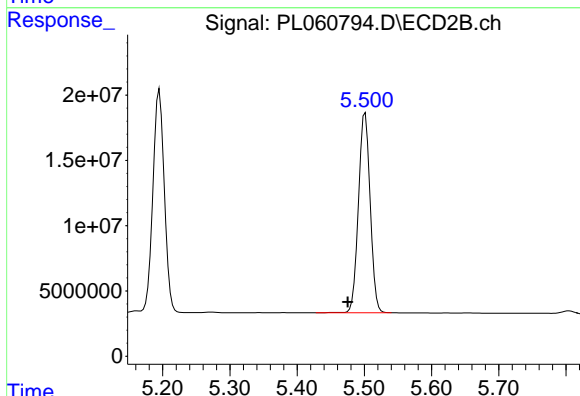
#22 Mirex

R.T.: 8.209 min
Delta R.T.: 0.000 min
Response: 87179090
Conc: 53.97 ng/ml



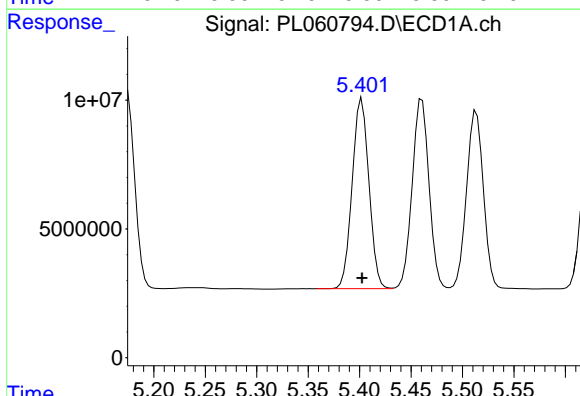
#24 Chlordane-2

R.T.: 0.000 min
 Exp R.T.: 4.833 min
 Response: 0
 Conc: N.D.



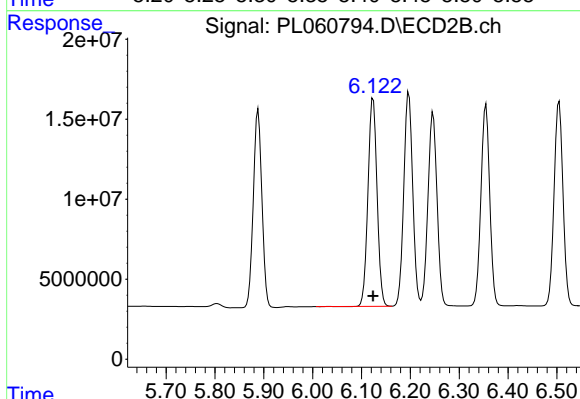
#24 Chlordane-2

R.T.: 5.501 min
 Delta R.T.: 0.026 min
 Response: 185202501
 Conc: 1719.64 ng/ml



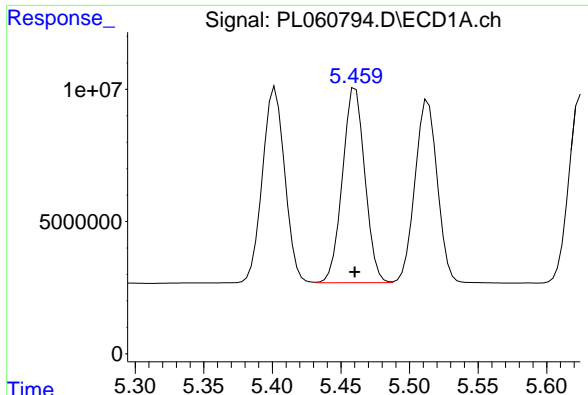
#25 Chlordane-3

R.T.: 5.402 min
 Delta R.T.: 0.000 min
 Response: 83740365
 Conc: 599.40 ng/ml

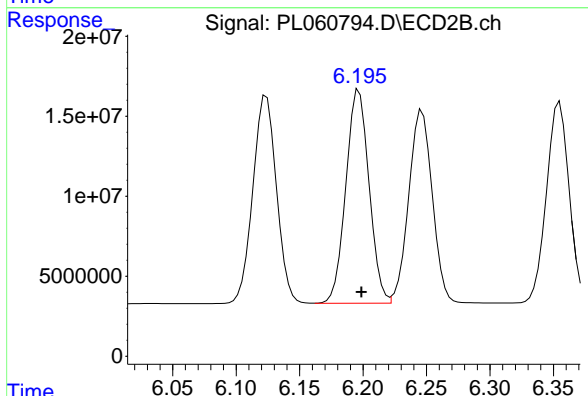


#25 Chlordane-3

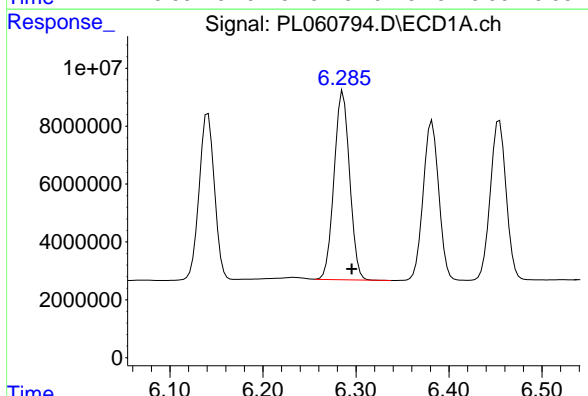
R.T.: 6.124 min
 Delta R.T.: 0.000 min
 Response: 168304259
 Conc: 417.37 ng/ml



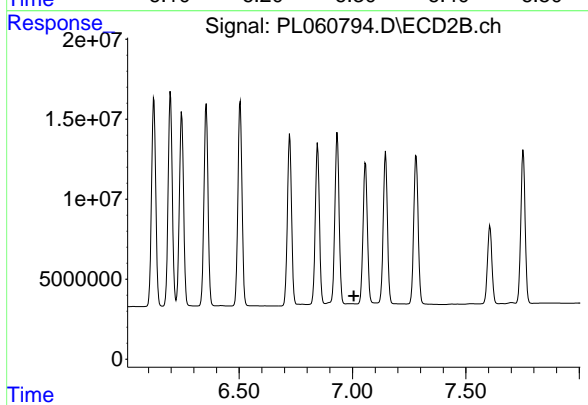
#26 Chlordane-4
 R.T.: 5.461 min
 Delta R.T.: 0.000 min
 Response: 83791167
 Conc: 731.73 ng/ml



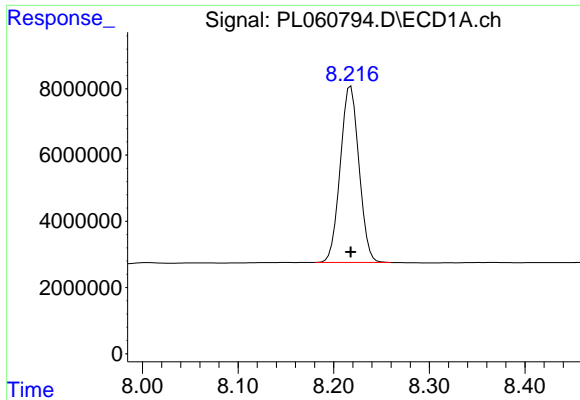
#26 Chlordane-4
 R.T.: 6.197 min
 Delta R.T.: -0.002 min
 Response: 169751893
 Conc: 344.46 ng/ml



#27 Chlordane-5
 R.T.: 6.286 min
 Delta R.T.: -0.010 min
 Response: 75738547
 Conc: 1519.57 ng/ml

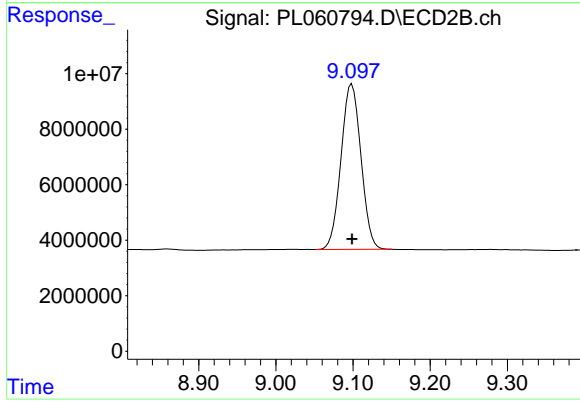


#27 Chlordane-5
 R.T.: 0.000 min
 Exp R.T.: 7.005 min
 Response: 0
 Conc: N.D.



#28 Decachlorobiphenyl

R.T.: 8.218 min
Delta R.T.: 0.000 min
Response: 72535842
Conc: 50.78 ng/ml



#28 Decachlorobiphenyl

R.T.: 9.098 min
Delta R.T.: 0.000 min
Response: 106836554
Conc: 52.86 ng/ml