

Data Path : Z:\pestpcbsrv\HPCHEM1\ECD_L\Data\PL081820\
 Data File : PL060818.D
 Signal(s) : Signal #1: ECD1A.ch Signal #2: ECD2B.ch
 Acq On : 18 Aug 2020 20:12
 Operator : DD\AJ
 Sample : L3500-08MSD
 Misc :
 ALS Vial : 26 Sample Multiplier: 1

Instrument :
 ECD_L
ClientSampleId :
 CL-02-081420MSD

Manual Integrations
APPROVED
 Ankita
 8/20/2020 1:07:38 PM

Integration File signal 1: autoint1.e
 Integration File signal 2: autoint2.e
 Quant Time: Aug 19 04:16:49 2020
 Quant Method : Z:\pestpcbsrv\HPCHEM1\ECD_L\methods\PL081820.M
 Quant Title : GC Extractables
 QLast Update : Wed Aug 19 02:25:28 2020
 Response via : Initial Calibration
 Integrator: ChemStation

Volume Inj. : 1 µl
 Signal #1 Phase : ZB-MR2 Signal #2 Phase: ZB-MR1
 Signal #1 Info : 30M x 0.32mm x0.2 Signal #2 Info : 30M x 0.32mm x0.5µm

Compound	RT#1	RT#2	Resp#1	Resp#2	ng/ml	ng/ml

System Monitoring Compounds						
1) SA Tetrachlo...	3.462	4.010	32732283	51484775	19.607	18.508
2) SA Decachlor...	8.218	9.100	26108344	37752621	18.278	18.679
Target Compounds						
2) A alpha-BHC	3.899	4.400	120.1E6	212.7E6	49.307	50.071
3) MA gamma-BHC...	4.183	4.686	106.2E6	191.4E6	48.951	48.566
4) MA Heptachlor	4.485	5.196	98894687	188.3E6	49.822	50.102
5) MB Aldrin	4.733	5.503	87457902	173.3E6	50.147	50.343
6) B beta-BHC	4.434	4.856	46508398	82955135	51.769	51.342
7) B delta-BHC	4.638	5.074	101.6E6	148.8E6	49.995	50.500
8) B Heptachlo...	5.176	5.890	84589739	143.0E6	50.180	51.174
9) A Endosulfan I	5.515	6.248	79414515	147.6E6	51.457	49.884
10) B gamma-Chl...	5.403	6.125	84690463	159.0E6	51.476	52.097
11) B alpha-Chl...	5.461	6.198	83301026	156.7E6	50.588	49.729
12) B 4,4'-DDE	5.627	6.356	78151070	148.3E6	50.680	48.970
13) MA Dieldrin	5.758	6.504	84306317	153.8E6	52.446	49.989m
14) MA Endrin	6.014	6.725	77732085	130.1E6	51.379	50.086
15) B Endosulfa...	6.287	6.934	74408863	127.2E6	49.344	48.764
16) A 4,4'-DDD	6.142	6.848	65255739	117.3E6	50.934	50.299
17) MA 4,4'-DDT	6.383	7.148	65112864	117.8E6	54.299	54.258
18) B Endrin al...	6.455	7.059	64903475	110.7E6	50.327	51.168
19) B Endosulfa...	6.669	7.282	77631133	129.6E6	53.525	54.641
20) A Methoxychlor	6.929	7.607	39536459	65848203	52.234	52.622
21) B Endrin ke...	7.158	7.754	85732125	127.8E6	55.194	55.432
22) Mirex	7.348	8.211	64943077	89951555	54.246	55.684

(f)=RT Delta > 1/2 Window (#)=Amounts differ by > 25% (m)=manual int.

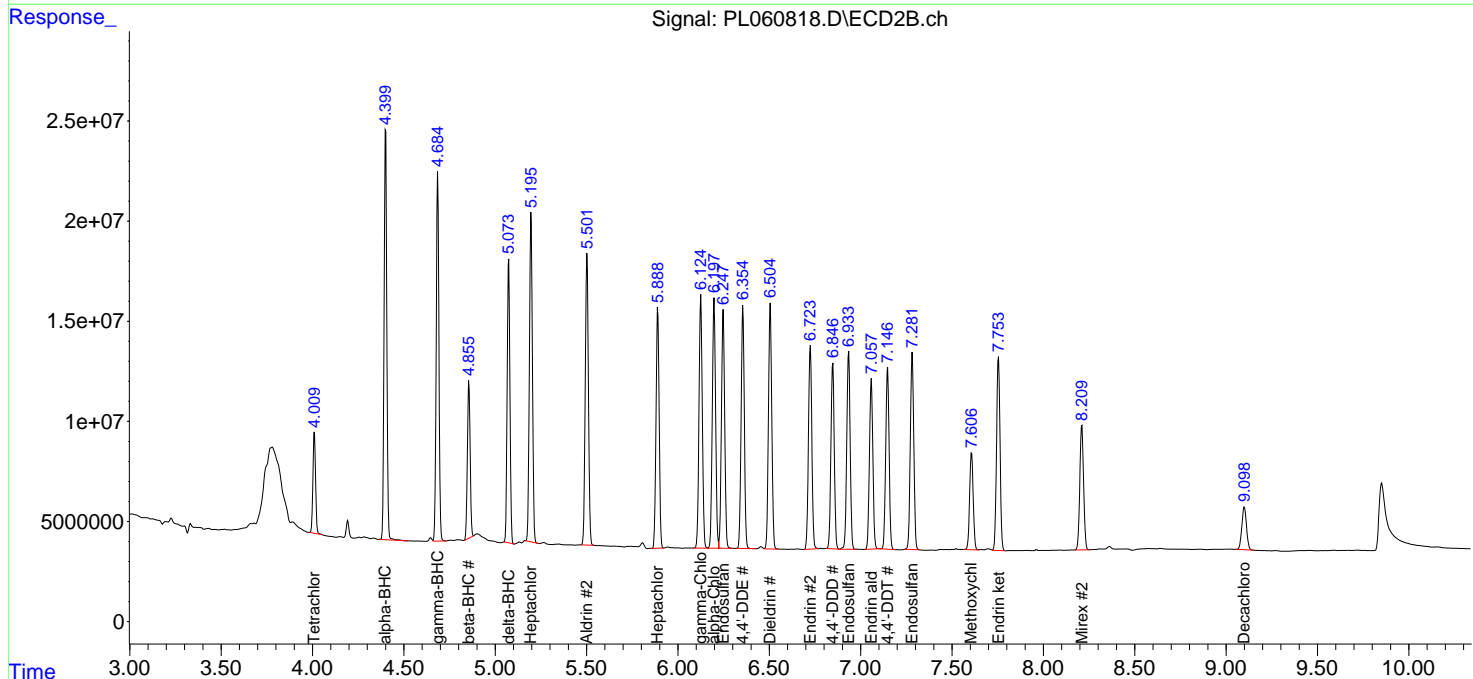
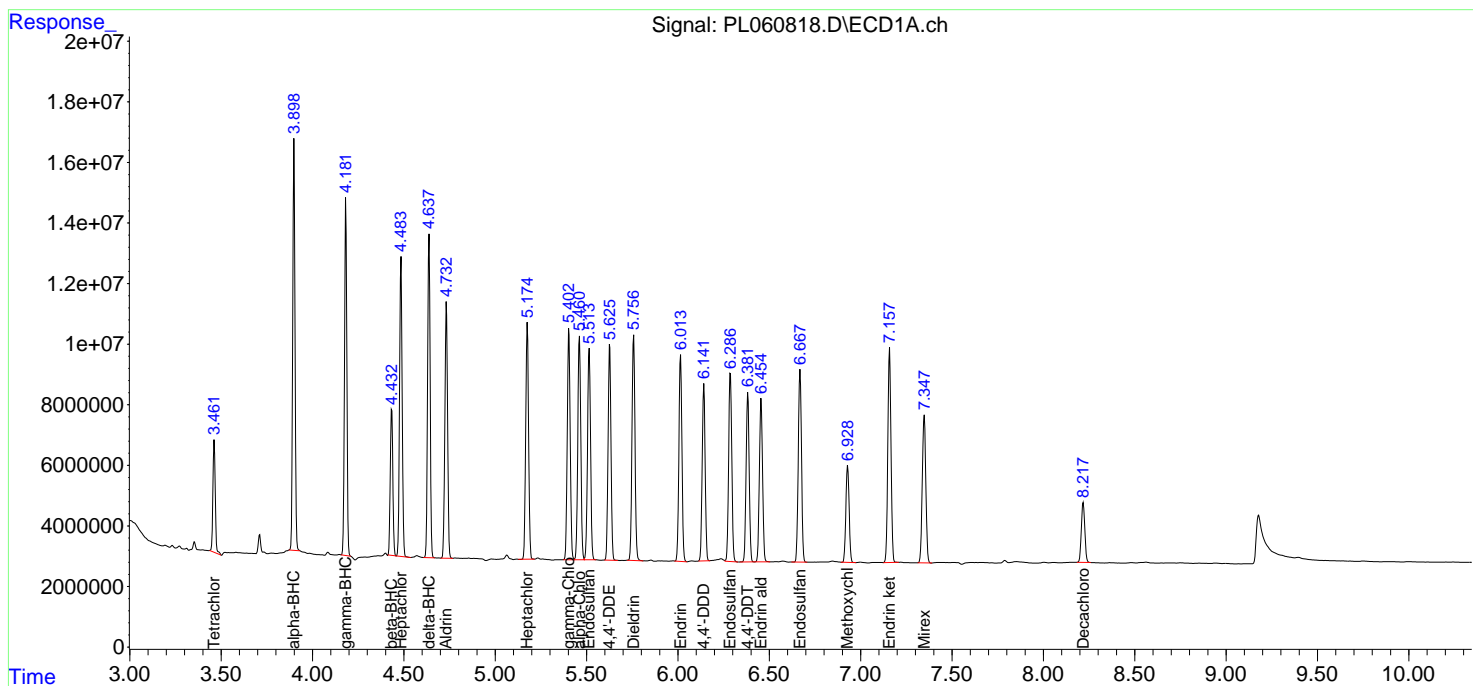
Data Path : Z:\pestpcbsrv\HPCHEM1\ECD_L\Data\PL081820\
 Data File : PL060818.D
 Signal(s) : Signal #1: ECD1A.ch Signal #2: ECD2B.ch
 Acq On : 18 Aug 2020 20:12
 Operator : DD\AJ
 Sample : L3500-08MSD
 Misc :
 ALS Vial : 26 Sample Multiplier: 1

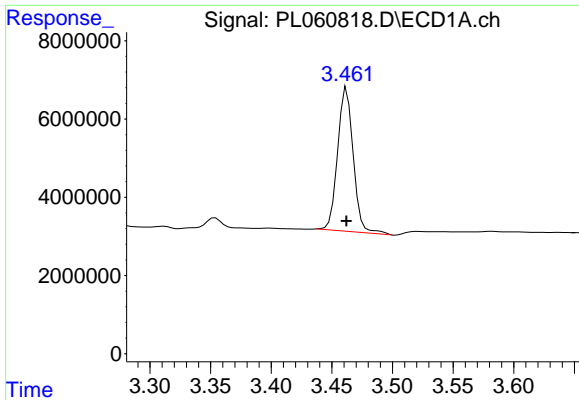
Instrument :
 ECD_L
 Client Sampled :
 CL-02-081420MSD

Manual Integrations
APPROVED
 Ankita
 8/20/2020 1:07:38 PM

Integration File signal 1: autoint1.e
 Integration File signal 2: autoint2.e
 Quant Time: Aug 19 04:16:49 2020
 Quant Method : Z:\pestpcbsrv\HPCHEM1\ECD_L\methods\PL081820.M
 Quant Title : GC Extractables
 QLast Update : Wed Aug 19 02:25:28 2020
 Response via : Initial Calibration
 Integrator: ChemStation

Volume Inj. : 1 µl
 Signal #1 Phase : ZB-MR2 Signal #2 Phase: ZB-MR1
 Signal #1 Info : 30M x 0.32mm x0.2 Signal #2 Info : 30M x 0.32mm x0.5µm

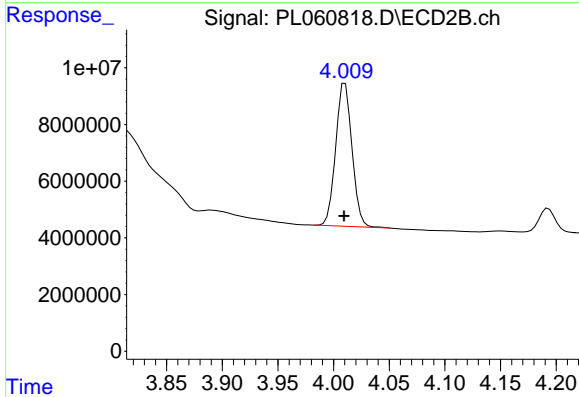




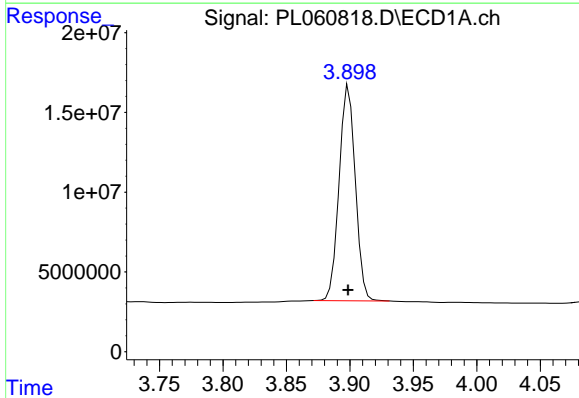
#1 Tetrachloro-m-xylene
 R.T.: 3.462 min
 Delta R.T.: 0.000 min
 Response: 32732283
 Conc: 19.61 ng/ml

Instrument :
 ECD_L
 ClientSampleId :
 CL-02-081420MSD

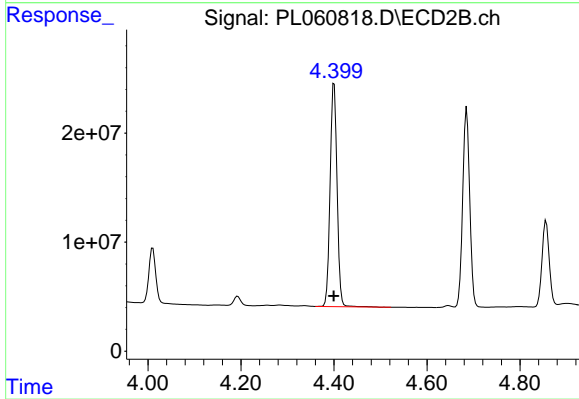
Manual Integrations
 APPROVED
 Ankita
 8/20/2020 1:07:38 PM



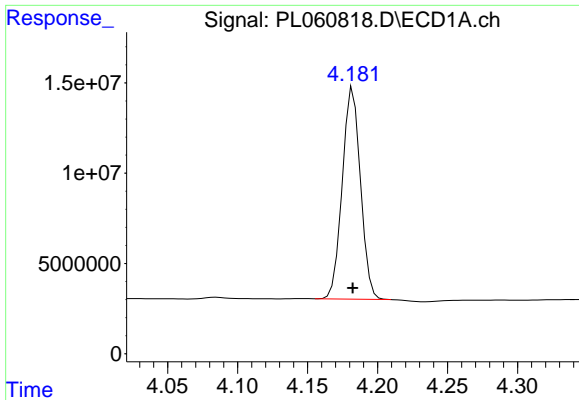
#1 Tetrachloro-m-xylene
 R.T.: 4.010 min
 Delta R.T.: 0.000 min
 Response: 51484775
 Conc: 18.51 ng/ml



#2 alpha-BHC
 R.T.: 3.899 min
 Delta R.T.: 0.000 min
 Response: 120072250
 Conc: 49.31 ng/ml



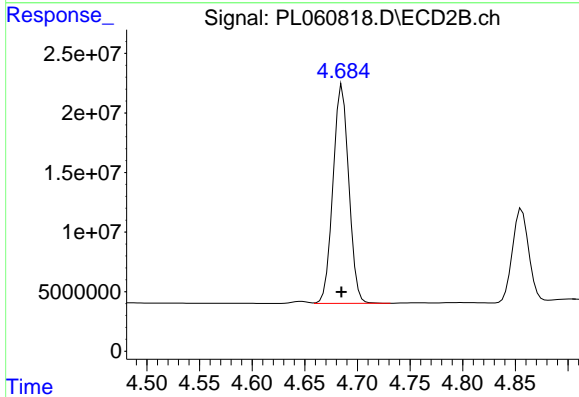
#2 alpha-BHC
 R.T.: 4.400 min
 Delta R.T.: 0.001 min
 Response: 212705525
 Conc: 50.07 ng/ml



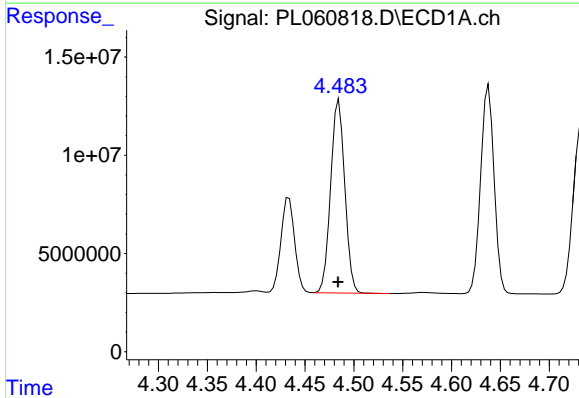
#3 gamma-BHC (Lindane)
 R.T.: 4.183 min
 Delta R.T.: 0.000 min
 Response: 106190642
 Conc: 48.95 ng/ml

Instrument :
 ECD_L
ClientSampled :
 CL-02-081420MSD

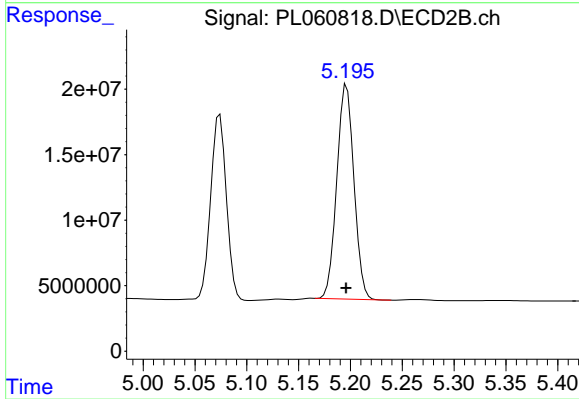
Manual Integrations
APPROVED
 Ankita
 8/20/2020 1:07:38 PM



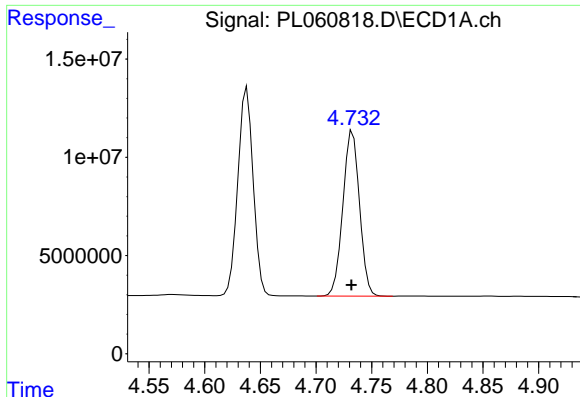
#3 gamma-BHC (Lindane)
 R.T.: 4.686 min
 Delta R.T.: 0.000 min
 Response: 191440246
 Conc: 48.57 ng/ml



#4 Heptachlor
 R.T.: 4.485 min
 Delta R.T.: 0.000 min
 Response: 98894687
 Conc: 49.82 ng/ml



#4 Heptachlor
 R.T.: 5.196 min
 Delta R.T.: 0.000 min
 Response: 188291427
 Conc: 50.10 ng/ml

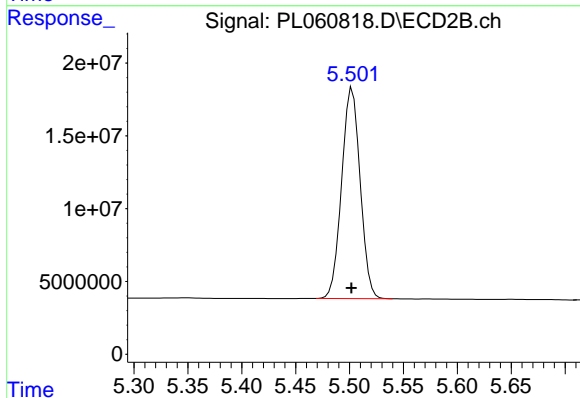


#5 Aldrin
 R.T.: 4.733 min
 Delta R.T.: 0.001 min
 Response: 87457902
 Conc: 50.15 ng/ml

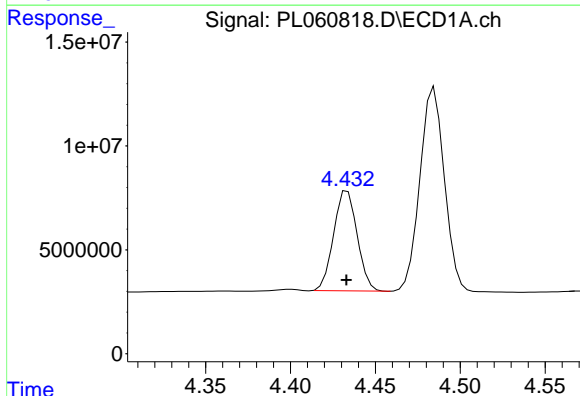
Instrument :
 ECD_L
 ClientSampled :
 CL-02-081420MSD

Manual Integrations
 APPROVED

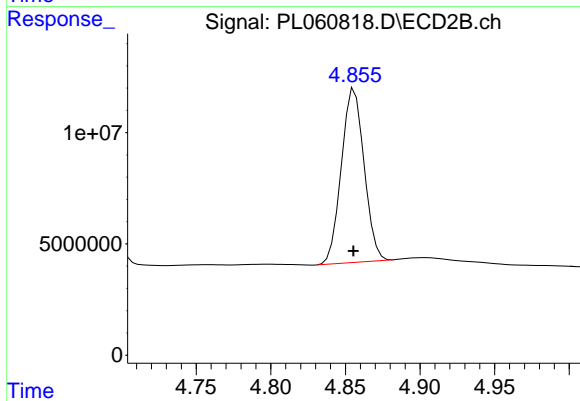
Ankita
 8/20/2020 1:07:38 PM



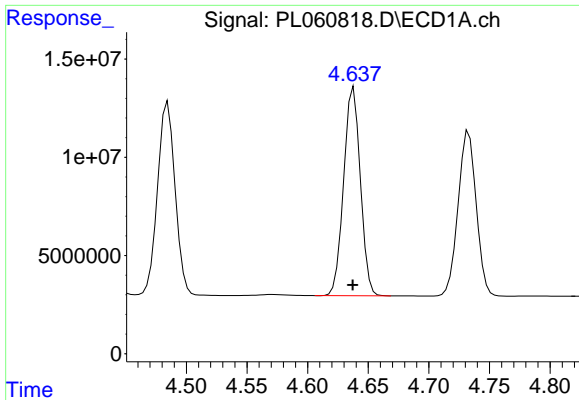
#5 Aldrin
 R.T.: 5.503 min
 Delta R.T.: 0.000 min
 Response: 173253743
 Conc: 50.34 ng/ml



#6 beta-BHC
 R.T.: 4.434 min
 Delta R.T.: 0.000 min
 Response: 46508398
 Conc: 51.77 ng/ml



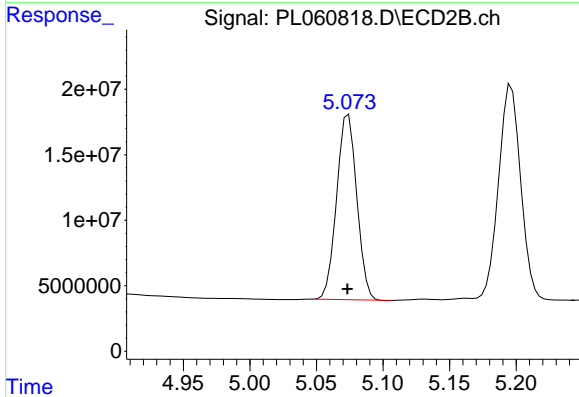
#6 beta-BHC
 R.T.: 4.856 min
 Delta R.T.: 0.000 min
 Response: 82955135
 Conc: 51.34 ng/ml



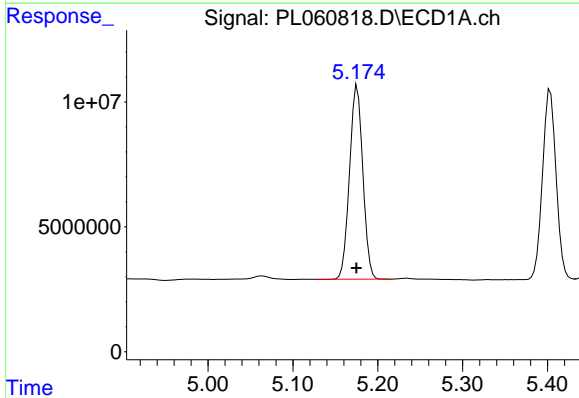
#7 delta-BHC
 R.T.: 4.638 min
 Delta R.T.: 0.000 min
 Response: 101649184
 Conc: 50.00 ng/ml

Instrument :
 ECD_L
 ClientSampleId :
 CL-02-081420MSD

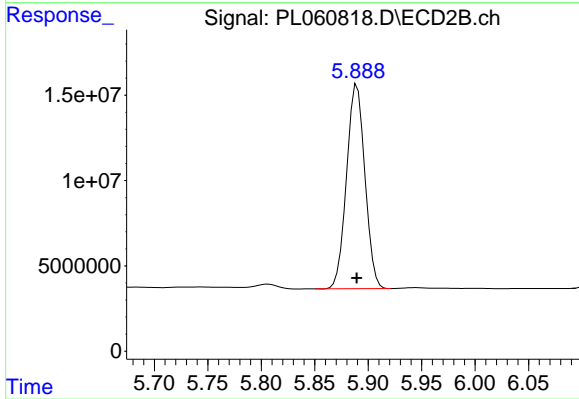
Manual Integrations
APPROVED
 Ankita
 8/20/2020 1:07:38 PM



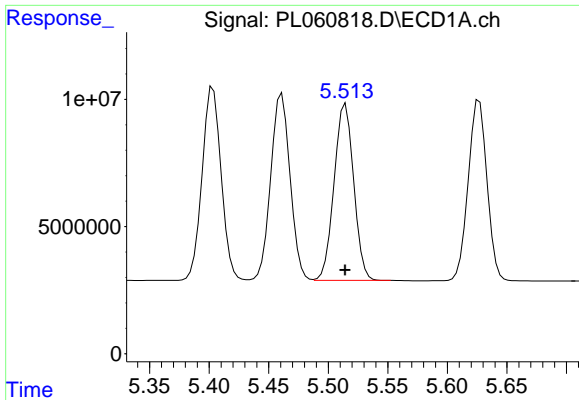
#7 delta-BHC
 R.T.: 5.074 min
 Delta R.T.: 0.000 min
 Response: 148756770
 Conc: 50.50 ng/ml



#8 Heptachlor epoxide
 R.T.: 5.176 min
 Delta R.T.: 0.000 min
 Response: 84589739
 Conc: 50.18 ng/ml



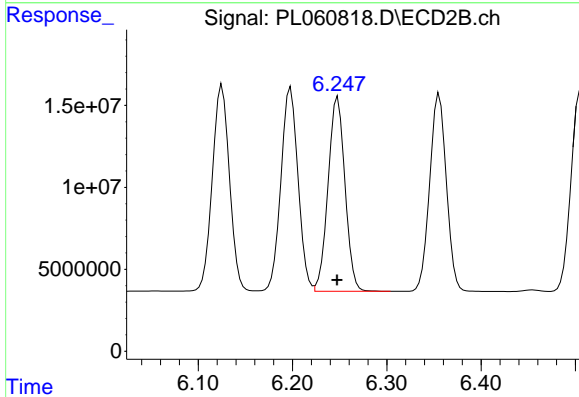
#8 Heptachlor epoxide
 R.T.: 5.890 min
 Delta R.T.: 0.000 min
 Response: 143045199
 Conc: 51.17 ng/ml



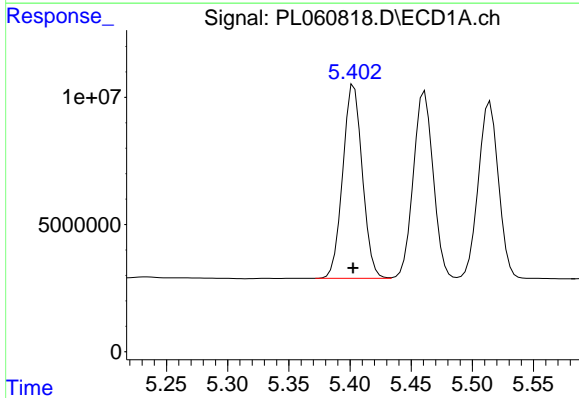
#9 Endosulfan I
 R.T.: 5.515 min
 Delta R.T.: 0.000 min
 Response: 79414515
 Conc: 51.46 ng/ml

Instrument :
 ECD_L
ClientSampled :
 CL-02-081420MSD

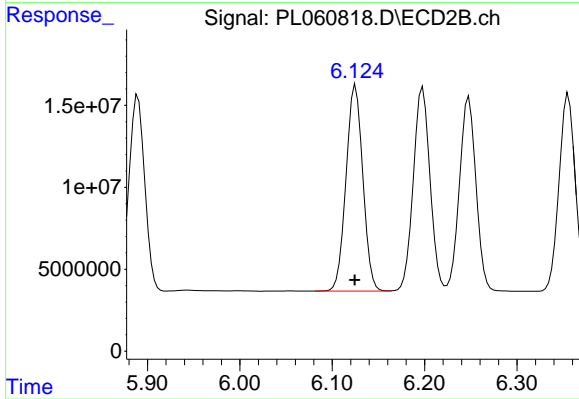
Manual Integrations
APPROVED
 Ankita
 8/20/2020 1:07:38 PM



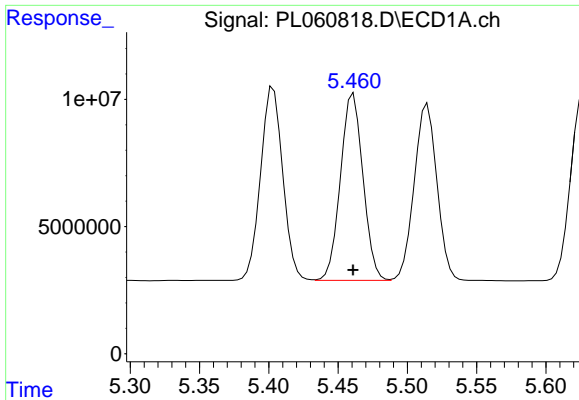
#9 Endosulfan I
 R.T.: 6.248 min
 Delta R.T.: 0.000 min
 Response: 147573572
 Conc: 49.88 ng/ml



#10 gamma-Chlordane
 R.T.: 5.403 min
 Delta R.T.: 0.000 min
 Response: 84690463
 Conc: 51.48 ng/ml



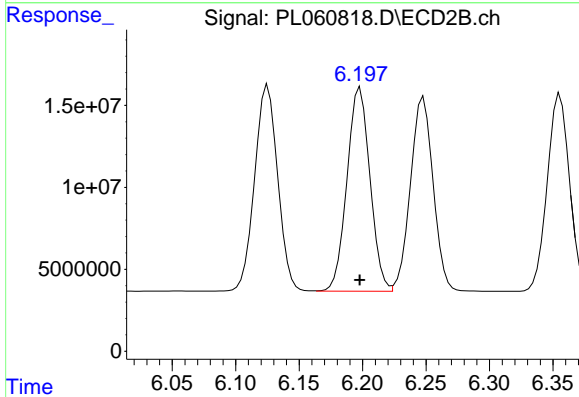
#10 gamma-Chlordane
 R.T.: 6.125 min
 Delta R.T.: 0.001 min
 Response: 159040854
 Conc: 52.10 ng/ml



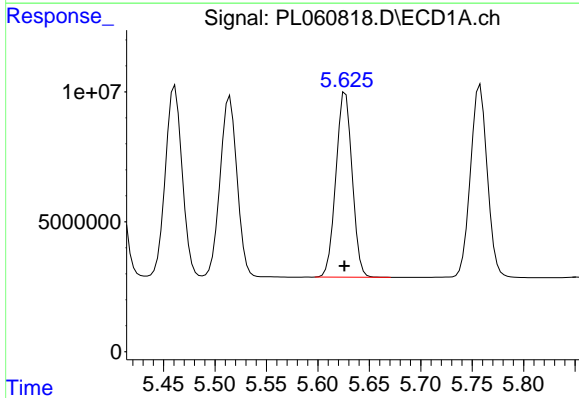
#11 alpha-Chlordane
 R.T.: 5.461 min
 Delta R.T.: 0.000 min
 Response: 83301026
 Conc: 50.59 ng/ml

Instrument :
 ECD_L
ClientSampled :
 CL-02-081420MSD

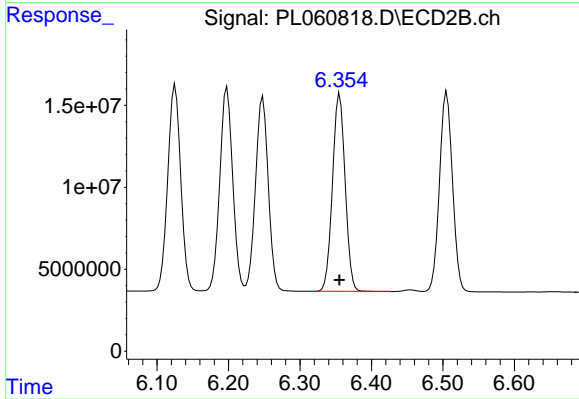
Manual Integrations
APPROVED
 Ankita
 8/20/2020 1:07:38 PM



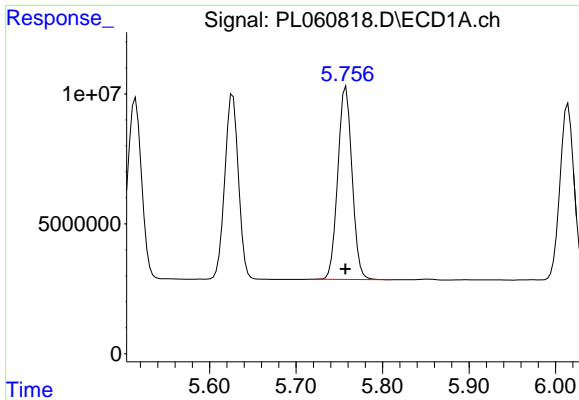
#11 alpha-Chlordane
 R.T.: 6.198 min
 Delta R.T.: 0.000 min
 Response: 156744701
 Conc: 49.73 ng/ml



#12 4,4'-DDE
 R.T.: 5.627 min
 Delta R.T.: 0.000 min
 Response: 78151070
 Conc: 50.68 ng/ml



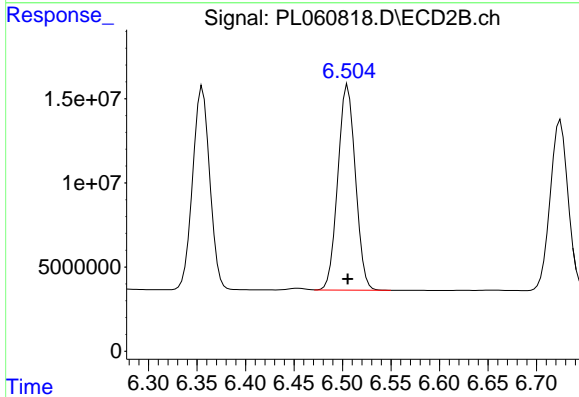
#12 4,4'-DDE
 R.T.: 6.356 min
 Delta R.T.: 0.000 min
 Response: 148250398
 Conc: 48.97 ng/ml



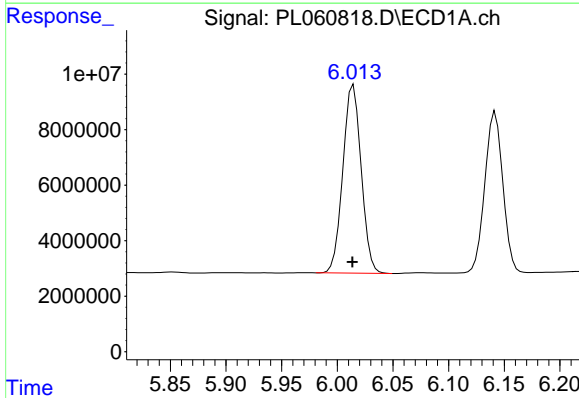
#13 Dieldrin
 R.T.: 5.758 min
 Delta R.T.: 0.000 min
 Response: 84306317
 Conc: 52.45 ng/ml

Instrument :
 ECD_L
 ClientSampleId :
 CL-02-081420MSD

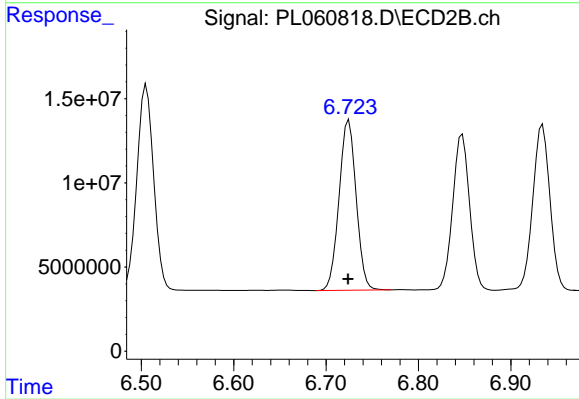
Manual Integrations
APPROVED
 Ankita
 8/20/2020 1:07:38 PM



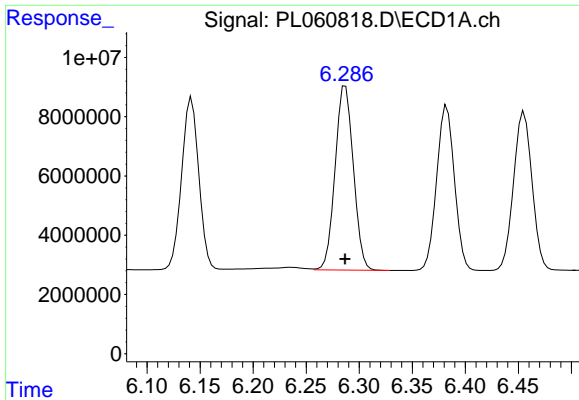
#13 Dieldrin
 R.T.: 6.504 min
 Delta R.T.: -0.001 min
 Response: 153843496
 Conc: 49.99 ng/ml m



#14 Endrin
 R.T.: 6.014 min
 Delta R.T.: 0.000 min
 Response: 77732085
 Conc: 51.38 ng/ml



#14 Endrin
 R.T.: 6.725 min
 Delta R.T.: 0.000 min
 Response: 130130912
 Conc: 50.09 ng/ml

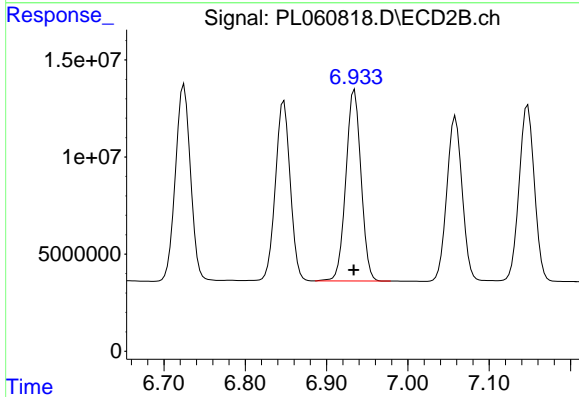


#15 Endosulfan II

R.T.: 6.287 min
 Delta R.T.: 0.000 min
 Response: 74408863
 Conc: 49.34 ng/ml

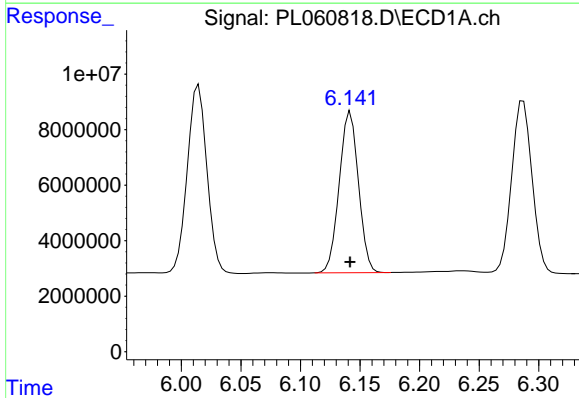
Instrument :
 ECD_L
 ClientSampled :
 CL-02-081420MSD

Manual Integrations
 APPROVED
 Ankita
 8/20/2020 1:07:38 PM



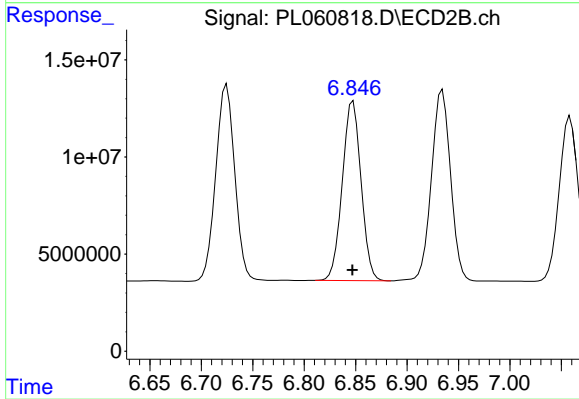
#15 Endosulfan II

R.T.: 6.934 min
 Delta R.T.: 0.000 min
 Response: 127202392
 Conc: 48.76 ng/ml



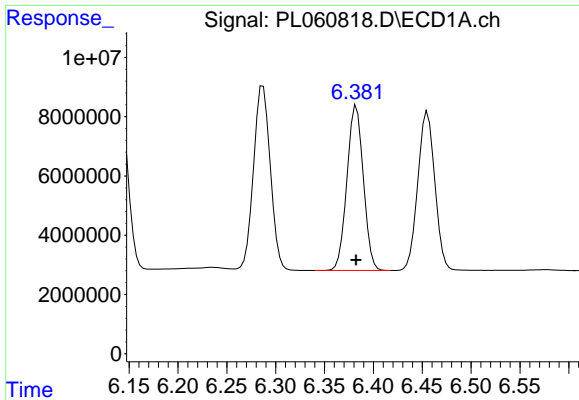
#16 4,4'-DDD

R.T.: 6.142 min
 Delta R.T.: 0.000 min
 Response: 65255739
 Conc: 50.93 ng/ml



#16 4,4'-DDD

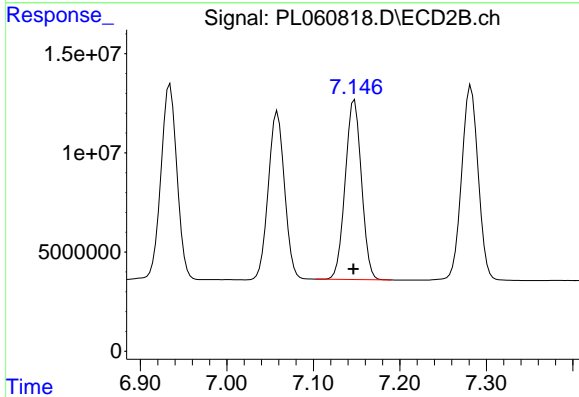
R.T.: 6.848 min
 Delta R.T.: 0.000 min
 Response: 117313650
 Conc: 50.30 ng/ml



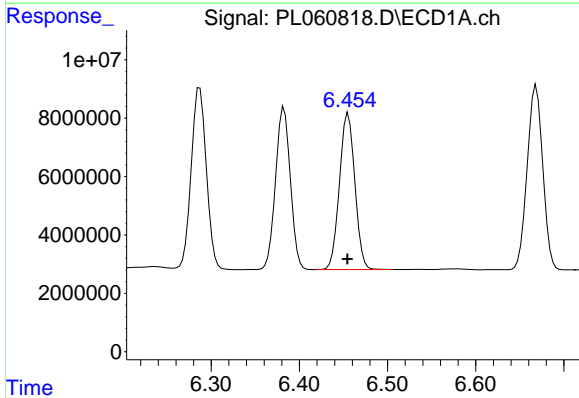
#17 4,4'-DDT
 R.T.: 6.383 min
 Delta R.T.: 0.000 min
 Response: 65112864
 Conc: 54.30 ng/ml

Instrument :
 ECD_L
ClientSampled :
 CL-02-081420MSD

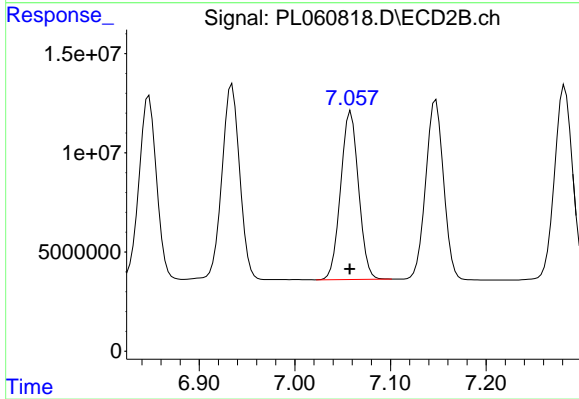
Manual Integrations
APPROVED
 Ankita
 8/20/2020 1:07:38 PM



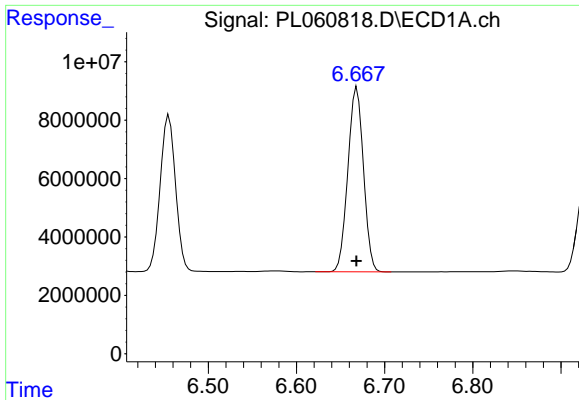
#17 4,4'-DDT
 R.T.: 7.148 min
 Delta R.T.: 0.001 min
 Response: 117755122
 Conc: 54.26 ng/ml



#18 Endrin aldehyde
 R.T.: 6.455 min
 Delta R.T.: 0.000 min
 Response: 64903475
 Conc: 50.33 ng/ml



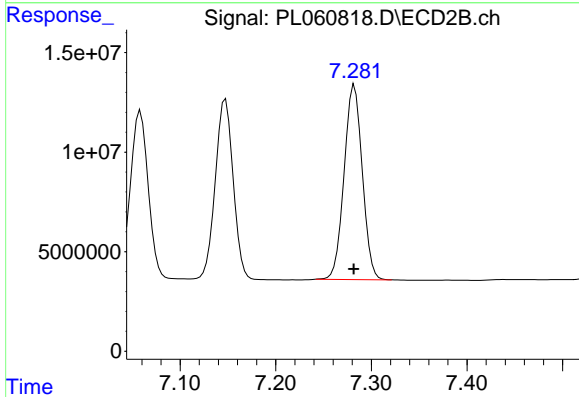
#18 Endrin aldehyde
 R.T.: 7.059 min
 Delta R.T.: 0.001 min
 Response: 110729844
 Conc: 51.17 ng/ml



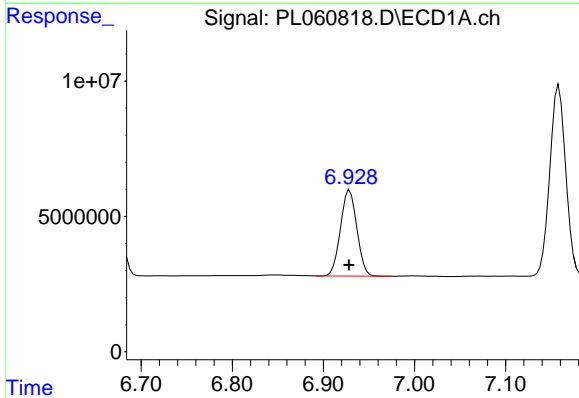
#19 Endosulfan Sulfate
 R.T.: 6.669 min
 Delta R.T.: 0.000 min
 Response: 77631133
 Conc: 53.52 ng/ml

Instrument :
 ECD_L
ClientSampleId :
 CL-02-081420MSD

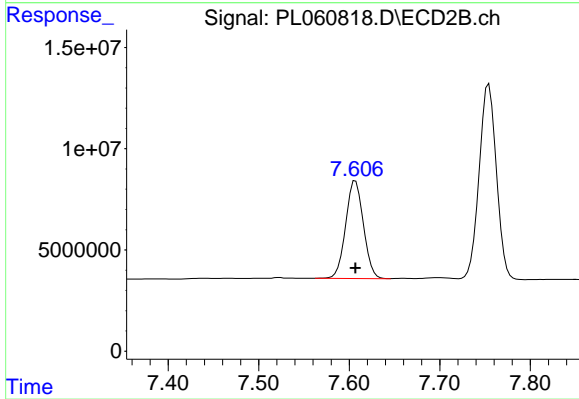
Manual Integrations
APPROVED
 Ankita
 8/20/2020 1:07:38 PM



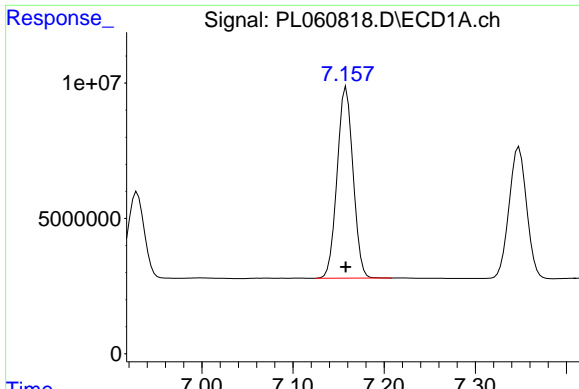
#19 Endosulfan Sulfate
 R.T.: 7.282 min
 Delta R.T.: 0.000 min
 Response: 129639628
 Conc: 54.64 ng/ml



#20 Methoxychlor
 R.T.: 6.929 min
 Delta R.T.: 0.000 min
 Response: 39536459
 Conc: 52.23 ng/ml



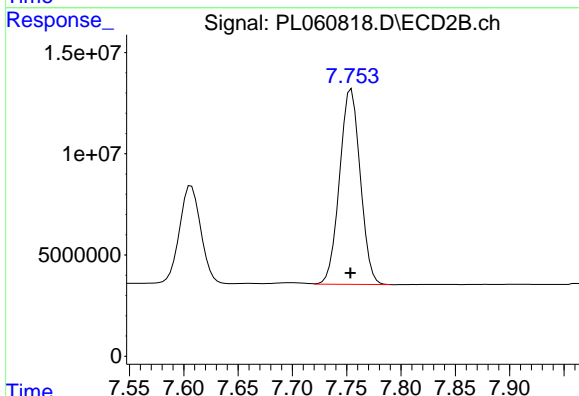
#20 Methoxychlor
 R.T.: 7.607 min
 Delta R.T.: 0.000 min
 Response: 65848203
 Conc: 52.62 ng/ml



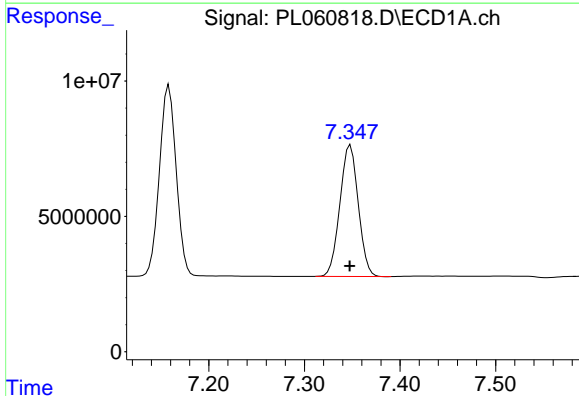
#21 Endrin ketone
 R.T.: 7.158 min
 Delta R.T.: 0.000 min
 Response: 85732125
 Conc: 55.19 ng/ml

Instrument :
 ECD_L
 ClientSampleId :
 CL-02-081420MSD

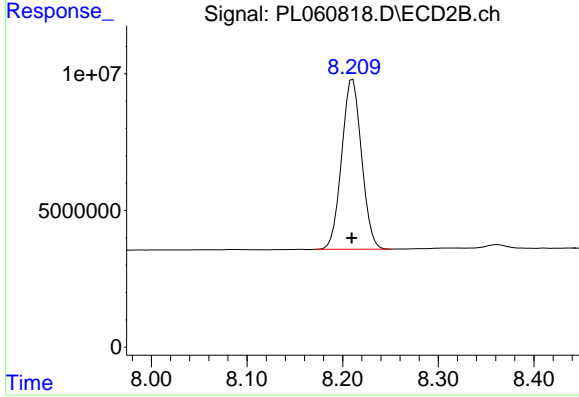
Manual Integrations
 APPROVED
 Ankita
 8/20/2020 1:07:38 PM



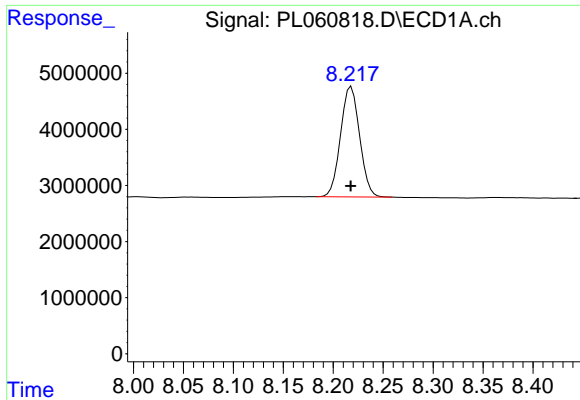
#21 Endrin ketone
 R.T.: 7.754 min
 Delta R.T.: 0.000 min
 Response: 127750759
 Conc: 55.43 ng/ml



#22 Mirex
 R.T.: 7.348 min
 Delta R.T.: 0.000 min
 Response: 64943077
 Conc: 54.25 ng/ml



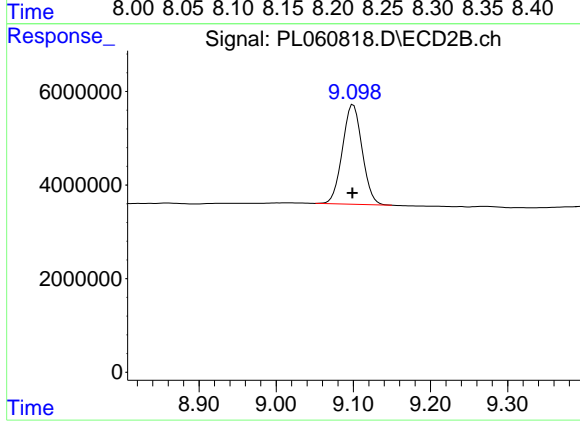
#22 Mirex
 R.T.: 8.211 min
 Delta R.T.: 0.000 min
 Response: 89951555
 Conc: 55.68 ng/ml



#28 Decachlorobiphenyl
R.T.: 8.218 min
Delta R.T.: 0.000 min
Response: 26108344
Conc: 18.28 ng/ml

Instrument :
ECD_L
ClientSampleId :
CL-02-081420MSD

Manual Integrations
APPROVED
Ankita
8/20/2020 1:07:38 PM



#28 Decachlorobiphenyl
R.T.: 9.100 min
Delta R.T.: 0.001 min
Response: 37752621
Conc: 18.68 ng/ml