

Data Path : Z:\pestpcbsrv\HPCHEM1\ECD\_L\Data\PL081920\  
 Data File : PL060851.D  
 Signal(s) : Signal #1: ECD1A.ch Signal #2: ECD2B.ch  
 Acq On : 19 Aug 2020 17:52  
 Operator : DD\AJ  
 Sample : PSTDCCC050  
 Misc :  
 ALS Vial : 4 Sample Multiplier: 1

Instrument :  
 ECD\_L  
 ClientSampleId :

Integration File signal 1: autoint1.e  
 Integration File signal 2: autoint2.e  
 Quant Time: Aug 19 18:51:38 2020  
 Quant Method : Z:\pestpcbsrv\HPCHEM1\ECD\_L\methods\PL081820.M  
 Quant Title : GC Extractables  
 QLast Update : Wed Aug 19 06:13:38 2020  
 Response via : Initial Calibration  
 Integrator: ChemStation

Volume Inj. : 1 µl  
 Signal #1 Phase : ZB-MR2 Signal #2 Phase: ZB-MR1  
 Signal #1 Info : 30M x 0.32mm x0.2 Signal #2 Info : 30M x 0.32mm x0.5µm

	Compound	RT#1	RT#2	Resp#1	Resp#2	ng/ml	ng/ml
-----							
System Monitoring Compounds							
1)	SA Tetrachlo...	3.462	4.010	85465106	130.5E6	51.195	46.908
28)	SA Decachlor...	8.217	9.099	72917134	101.6E6	51.047	50.279
Target Compounds							
2)	A alpha-BHC	3.898	4.399	127.9E6	204.2E6	52.503	48.072
3)	MA gamma-BHC...	4.182	4.685	114.5E6	189.3E6	52.802	48.011
4)	MA Heptachlor	4.484	5.196	103.8E6	181.4E6	52.269	48.268
5)	MB Aldrin	4.732	5.502	92741234	169.0E6	53.176	49.026
6)	B beta-BHC	4.433	4.856	47042838	77488328	52.363	47.959
7)	B delta-BHC	4.637	5.073	108.4E6	155.0E6	53.297	52.606
8)	B Heptachlo...	5.175	5.889	88710347	148.8E6	52.624	53.235
9)	A Endosulfan I	5.514	6.248	81715554	140.8E6	52.937	47.598
10)	B gamma-Chl...	5.403	6.124	87184362	154.0E6	52.953	50.425
11)	B alpha-Chl...	5.461	6.197	87293989	152.7E6	52.989	48.446
12)	B 4,4'-DDE	5.626	6.355	80977112	139.8E6	52.513	46.169
13)	MA Dieldrin	5.757	6.505	85850082	144.9E6	53.406	47.093
14)	MA Endrin	6.014	6.724	77493823	118.3E6	51.222	45.537
15)	B Endosulfa...	6.286	6.933	78165650	123.8E6	51.836	47.477
16)	A 4,4'-DDD	6.141	6.846	68781475	112.8E6	53.686	48.360
17)	MA 4,4'-DDT	6.382	7.146	64774371	107.6E6	54.017	49.570
18)	B Endrin al...	6.455	7.058	67407940	105.9E6	52.269	48.924
19)	B Endosulfa...	6.668	7.281	75224014	117.3E6	51.865	49.442
20)	A Methoxychlor	6.928	7.607	39484699	61497109	52.165	49.145
21)	B Endrin ke...	7.158	7.754	86122739	120.9E6	55.445	52.465
22)	Mirex	7.348	8.210	65170120	83209894	54.436	51.511
24)	Chlordane-2	0.000	5.502f	0	169.0E6	N.D.	1569.014 #
25)	Chlordane-3	5.403	6.124	87184362	154.0E6	624.053	381.786 #
26)	Chlordane-4	5.461	6.197	87293989	152.7E6	762.325	309.876 #
27)	Chlordane-5	6.286	0.000	78165650	0	1568.262	N.D. #

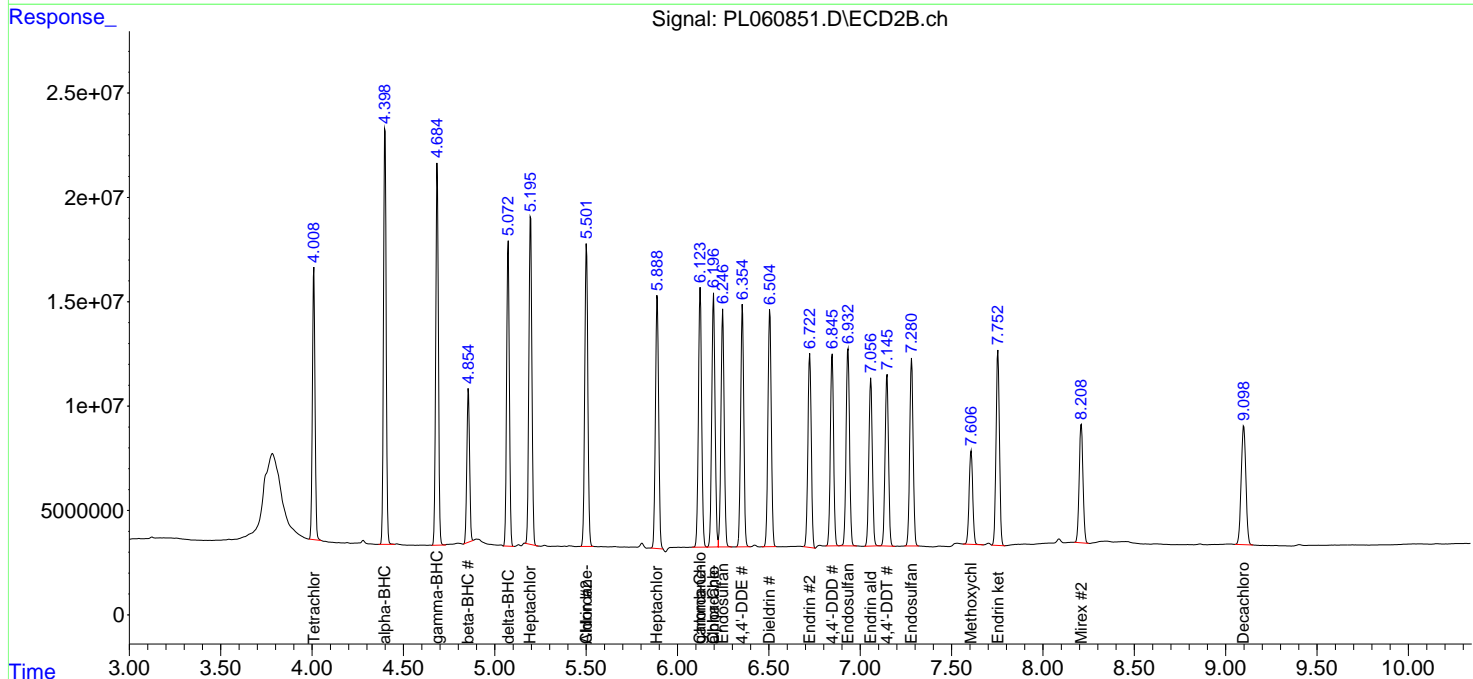
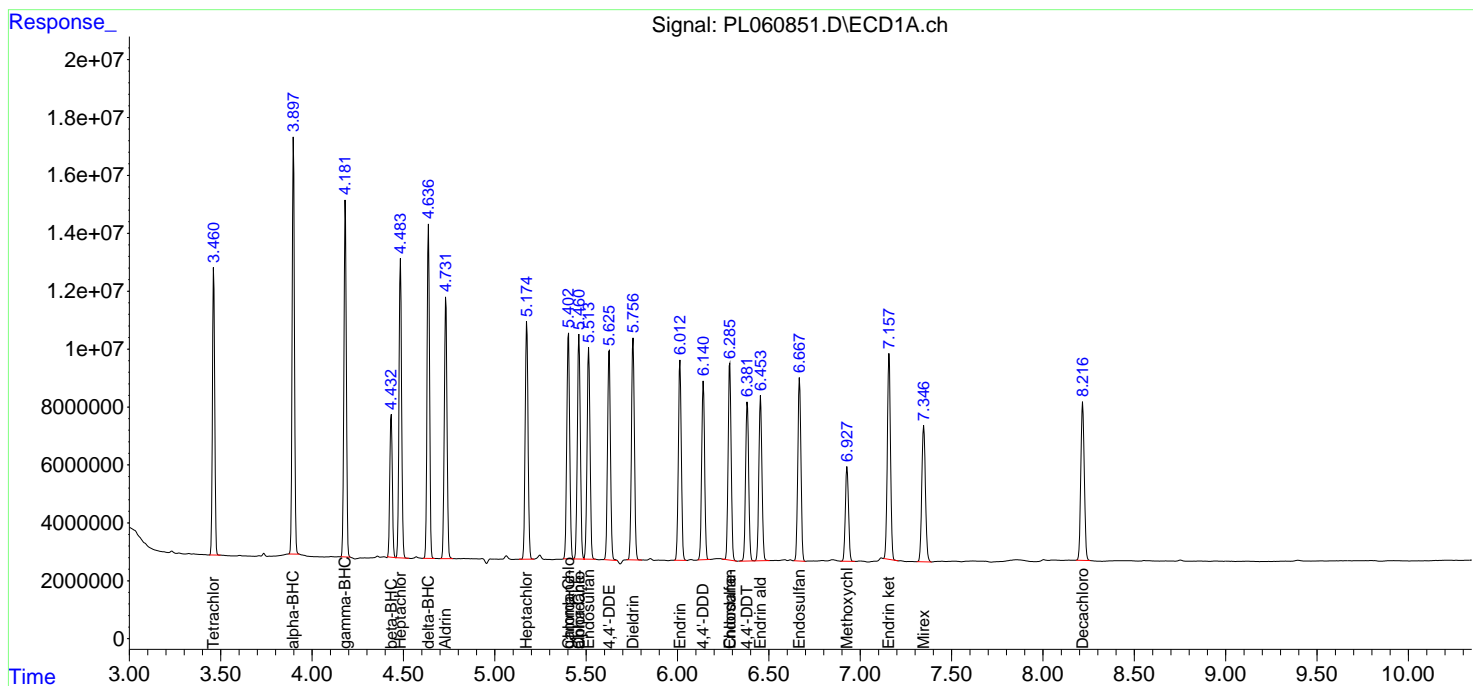
(f)=RT Delta > 1/2 Window (#)=Amounts differ by > 25% (m)=manual int.

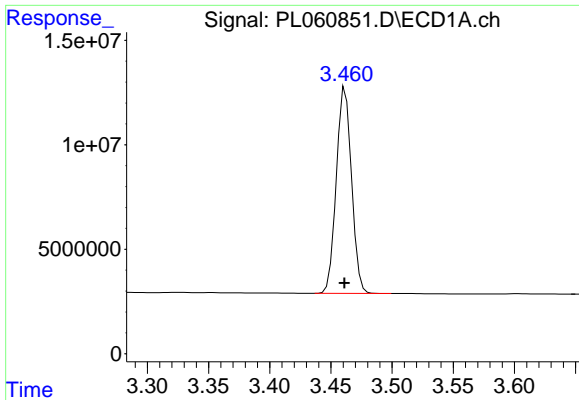
Data Path : Z:\pestpcbsrv\HPCHEM1\ECD\_L\Data\PL081920\  
 Data File : PL060851.D  
 Signal(s) : Signal #1: ECD1A.ch Signal #2: ECD2B.ch  
 Acq On : 19 Aug 2020 17:52  
 Operator : DD\AJ  
 Sample : PSTDCCC050  
 Misc :  
 ALS Vial : 4 Sample Multiplier: 1

Instrument :  
 ECD\_L  
 ClientSampled :

Integration File signal 1: autoint1.e  
 Integration File signal 2: autoint2.e  
 Quant Time: Aug 19 18:51:38 2020  
 Quant Method : Z:\pestpcbsrv\HPCHEM1\ECD\_L\methods\PL081820.M  
 Quant Title : GC Extractables  
 QLast Update : Wed Aug 19 06:13:38 2020  
 Response via : Initial Calibration  
 Integrator: ChemStation

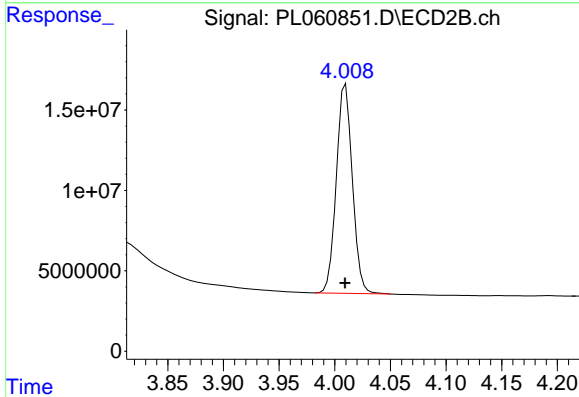
Volume Inj. : 1 µl  
 Signal #1 Phase : ZB-MR2 Signal #2 Phase: ZB-MR1  
 Signal #1 Info : 30M x 0.32mm x0.2 Signal #2 Info : 30M x 0.32mm x0.5µm



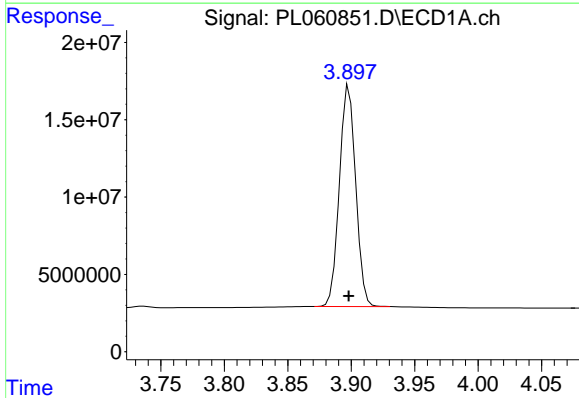


#1 Tetrachloro-m-xylene  
 R.T.: 3.462 min  
 Delta R.T.: 0.000 min  
 Response: 85465106  
 Conc: 51.19 ng/ml

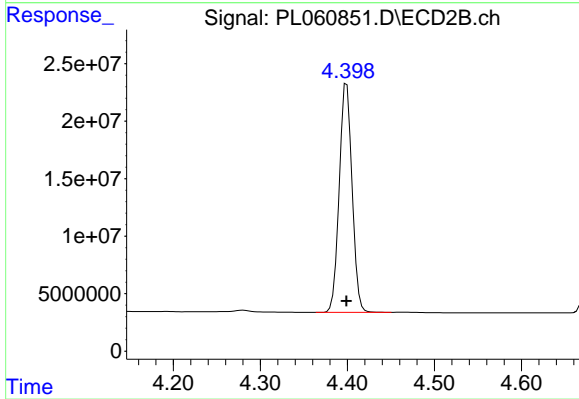
Instrument :  
 ECD\_L  
 ClientSampleId :



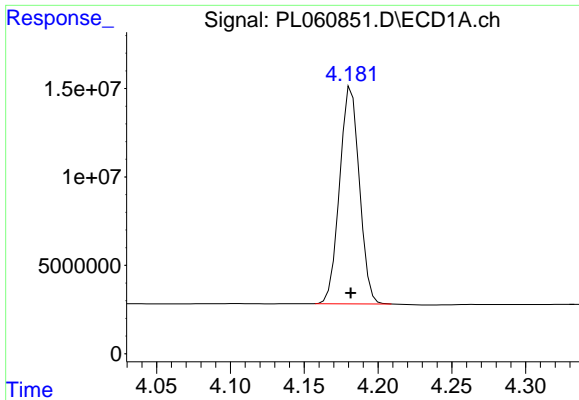
#1 Tetrachloro-m-xylene  
 R.T.: 4.010 min  
 Delta R.T.: 0.000 min  
 Response: 130483324  
 Conc: 46.91 ng/ml



#2 alpha-BHC  
 R.T.: 3.898 min  
 Delta R.T.: 0.000 min  
 Response: 127857146  
 Conc: 52.50 ng/ml

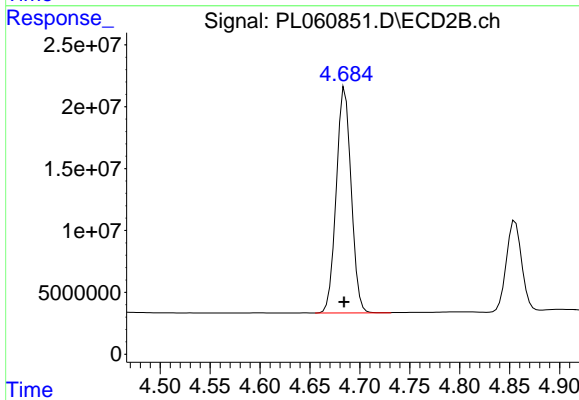


#2 alpha-BHC  
 R.T.: 4.399 min  
 Delta R.T.: 0.000 min  
 Response: 204214463  
 Conc: 48.07 ng/ml

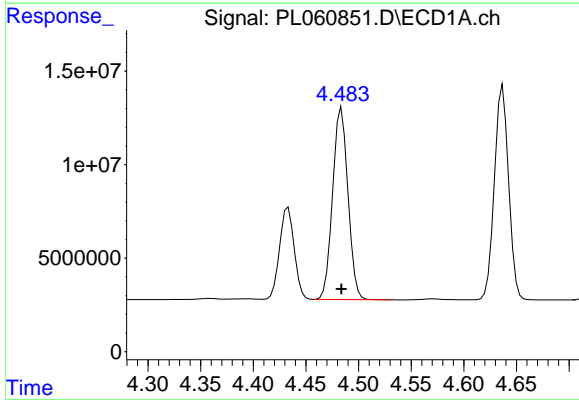


#3 gamma-BHC (Lindane)  
 R.T.: 4.182 min  
 Delta R.T.: 0.000 min  
 Response: 114545475  
 Conc: 52.80 ng/ml

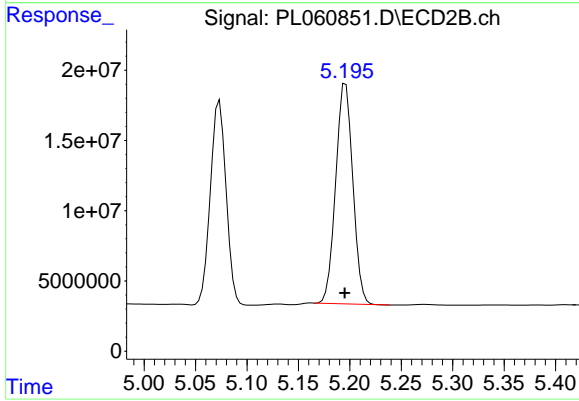
Instrument :  
 ECD\_L  
 ClientSampled :



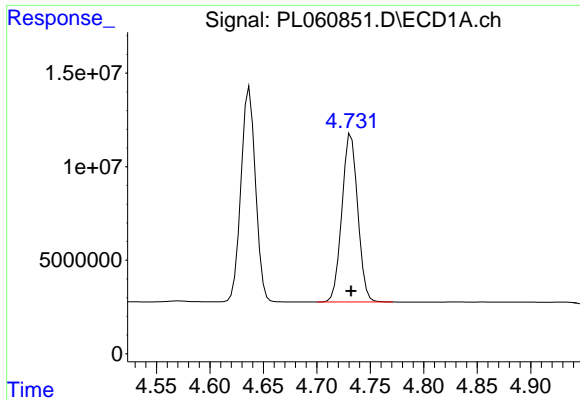
#3 gamma-BHC (Lindane)  
 R.T.: 4.685 min  
 Delta R.T.: 0.000 min  
 Response: 189252567  
 Conc: 48.01 ng/ml



#4 Heptachlor  
 R.T.: 4.484 min  
 Delta R.T.: 0.000 min  
 Response: 103753080  
 Conc: 52.27 ng/ml

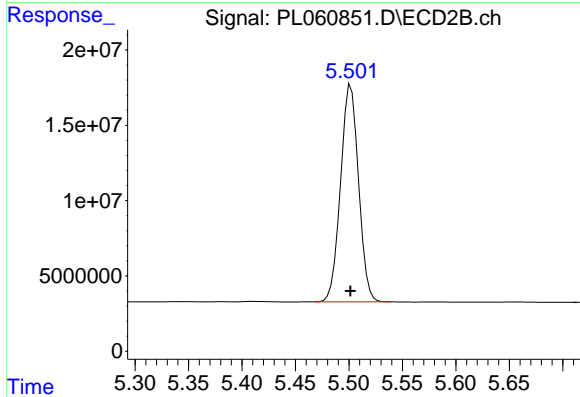


#4 Heptachlor  
 R.T.: 5.196 min  
 Delta R.T.: 0.000 min  
 Response: 181397997  
 Conc: 48.27 ng/ml

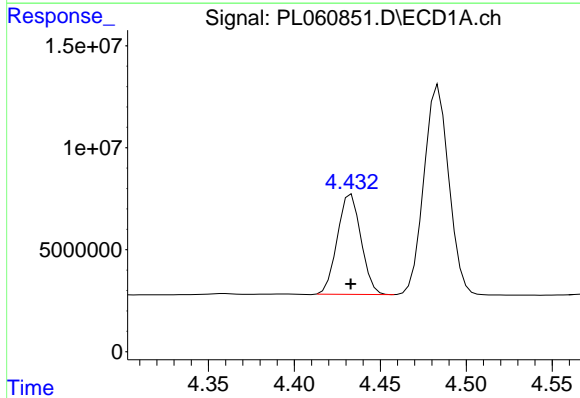


#5 Aldrin  
 R.T.: 4.732 min  
 Delta R.T.: 0.000 min  
 Response: 92741234  
 Conc: 53.18 ng/ml

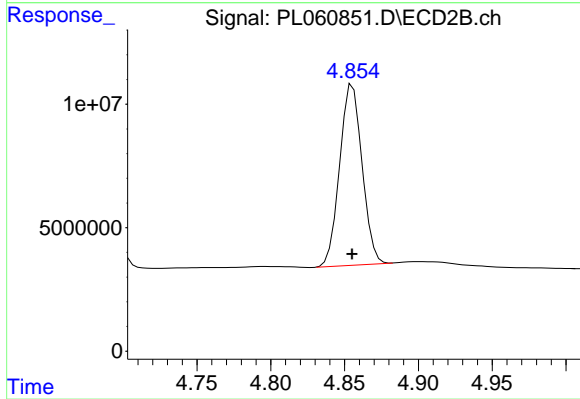
Instrument :  
 ECD\_L  
 ClientSampled :



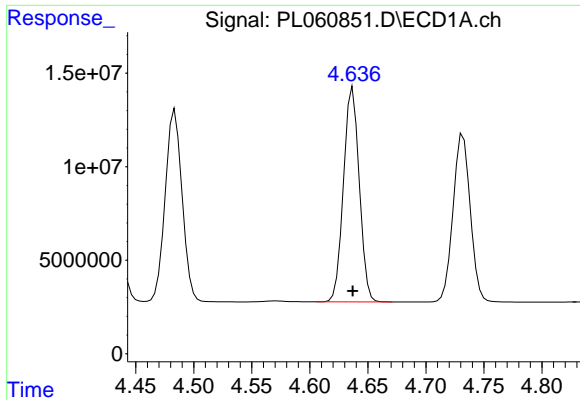
#5 Aldrin  
 R.T.: 5.502 min  
 Delta R.T.: 0.000 min  
 Response: 168980193  
 Conc: 49.03 ng/ml



#6 beta-BHC  
 R.T.: 4.433 min  
 Delta R.T.: 0.000 min  
 Response: 47042838  
 Conc: 52.36 ng/ml

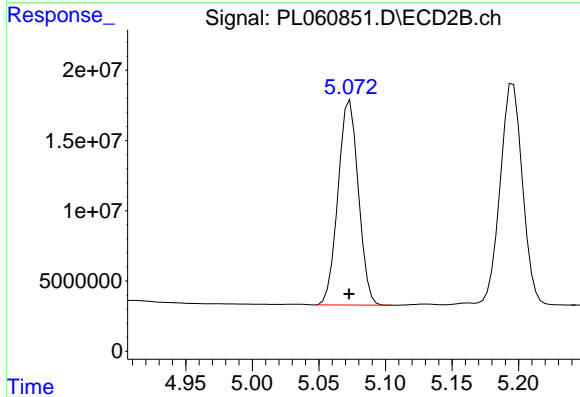


#6 beta-BHC  
 R.T.: 4.856 min  
 Delta R.T.: 0.000 min  
 Response: 77488328  
 Conc: 47.96 ng/ml

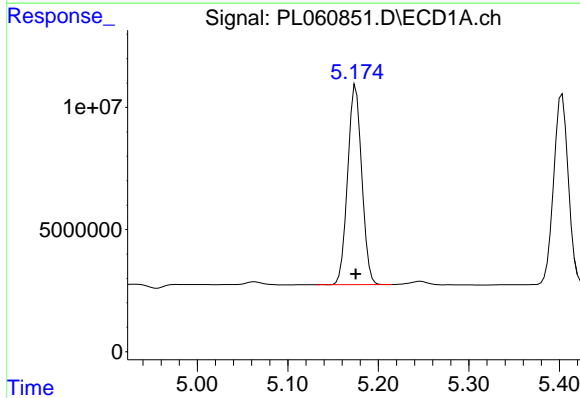


#7 delta-BHC  
 R.T.: 4.637 min  
 Delta R.T.: 0.000 min  
 Response: 108361898  
 Conc: 53.30 ng/ml

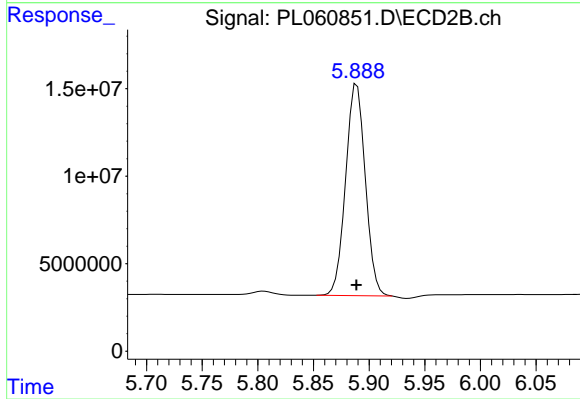
Instrument :  
 ECD\_L  
 ClientSampled :



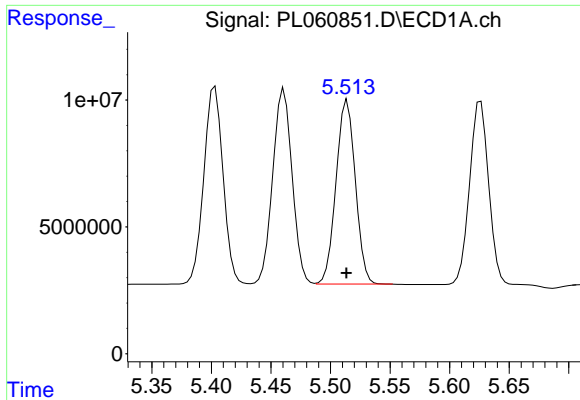
#7 delta-BHC  
 R.T.: 5.073 min  
 Delta R.T.: 0.000 min  
 Response: 154960877  
 Conc: 52.61 ng/ml



#8 Heptachlor epoxide  
 R.T.: 5.175 min  
 Delta R.T.: 0.000 min  
 Response: 88710347  
 Conc: 52.62 ng/ml

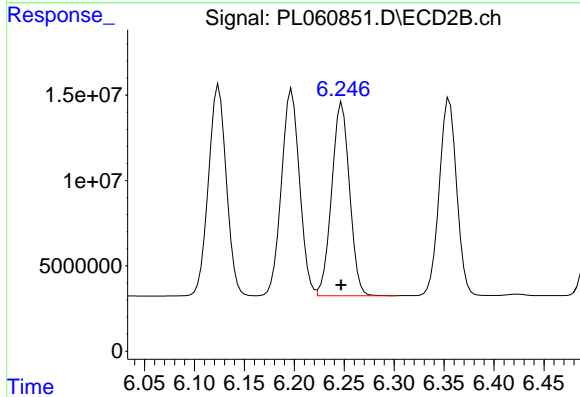


#8 Heptachlor epoxide  
 R.T.: 5.889 min  
 Delta R.T.: 0.000 min  
 Response: 148808226  
 Conc: 53.24 ng/ml

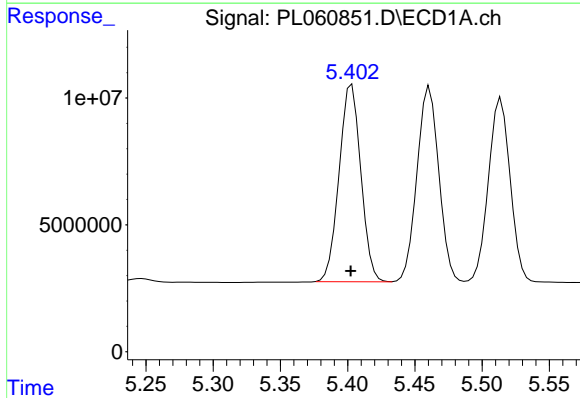


#9 Endosulfan I  
 R.T.: 5.514 min  
 Delta R.T.: 0.000 min  
 Response: 81715554  
 Conc: 52.94 ng/ml

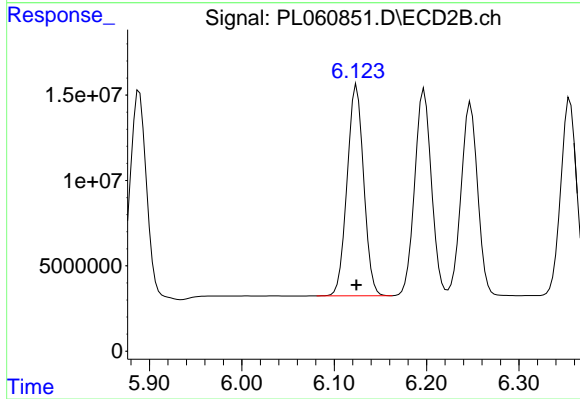
Instrument :  
 ECD\_L  
 ClientSampleId :



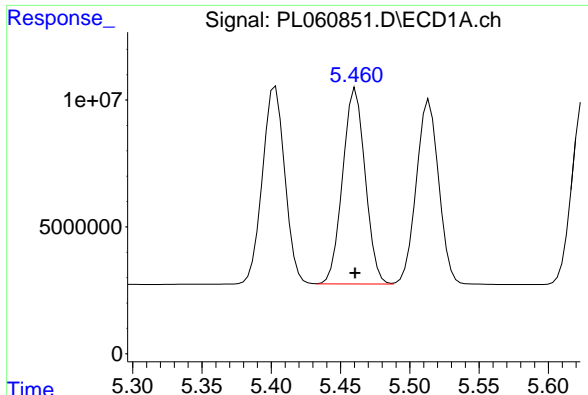
#9 Endosulfan I  
 R.T.: 6.248 min  
 Delta R.T.: 0.000 min  
 Response: 140816141  
 Conc: 47.60 ng/ml



#10 gamma-Chlordane  
 R.T.: 5.403 min  
 Delta R.T.: 0.000 min  
 Response: 87184362  
 Conc: 52.95 ng/ml

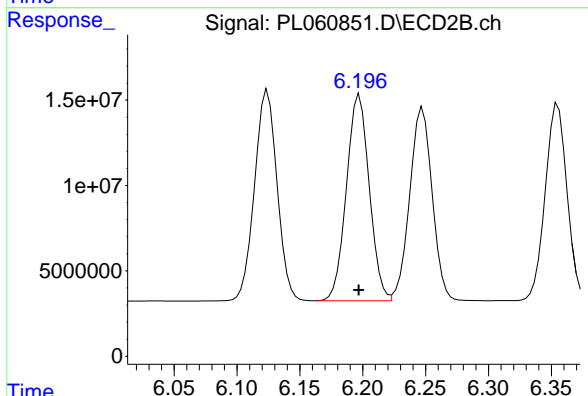


#10 gamma-Chlordane  
 R.T.: 6.124 min  
 Delta R.T.: 0.000 min  
 Response: 153956298  
 Conc: 50.42 ng/ml

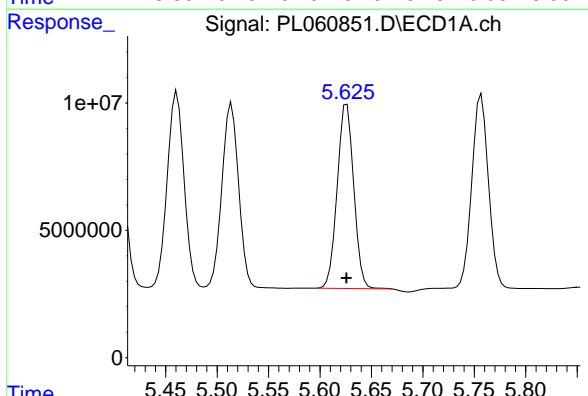


#11 alpha-Chlordane  
 R.T.: 5.461 min  
 Delta R.T.: 0.000 min  
 Response: 87293989  
 Conc: 52.99 ng/ml

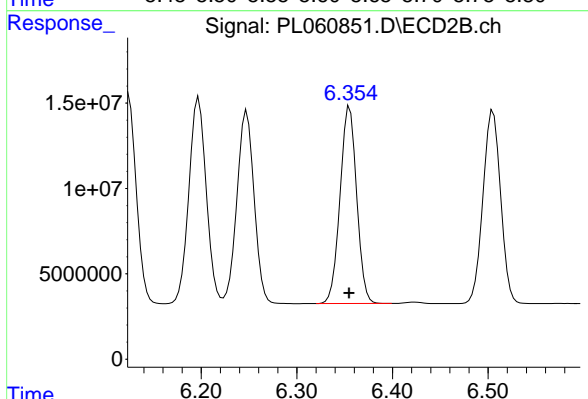
Instrument :  
 ECD\_L  
 ClientSampled :



#11 alpha-Chlordane  
 R.T.: 6.197 min  
 Delta R.T.: 0.000 min  
 Response: 152710093  
 Conc: 48.45 ng/ml

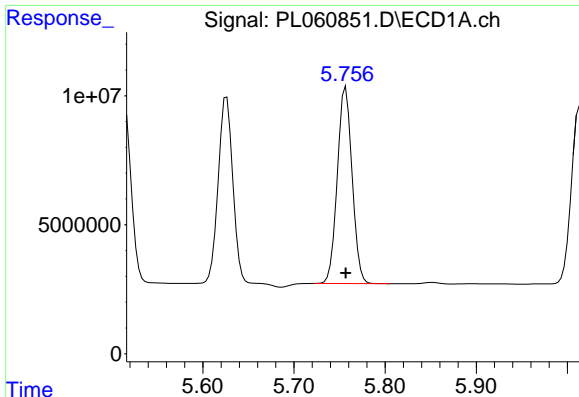


#12 4,4'-DDE  
 R.T.: 5.626 min  
 Delta R.T.: 0.000 min  
 Response: 80977112  
 Conc: 52.51 ng/ml



#12 4,4'-DDE  
 R.T.: 6.355 min  
 Delta R.T.: 0.000 min  
 Response: 139771399  
 Conc: 46.17 ng/ml

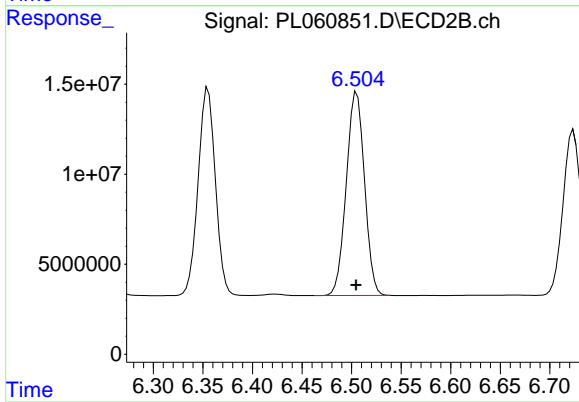




#13 Dieldrin

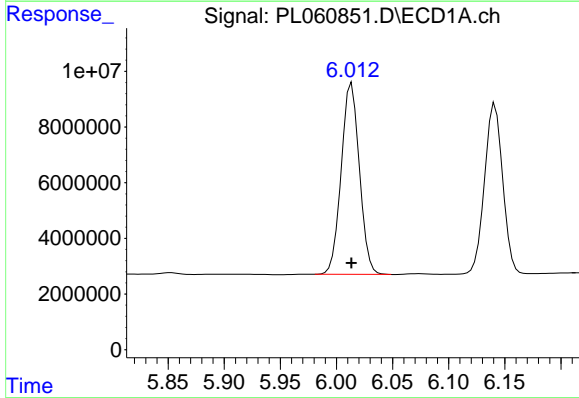
R.T.: 5.757 min  
 Delta R.T.: 0.000 min  
 Response: 85850082  
 Conc: 53.41 ng/ml

Instrument :  
 ECD\_L  
 ClientSampled :



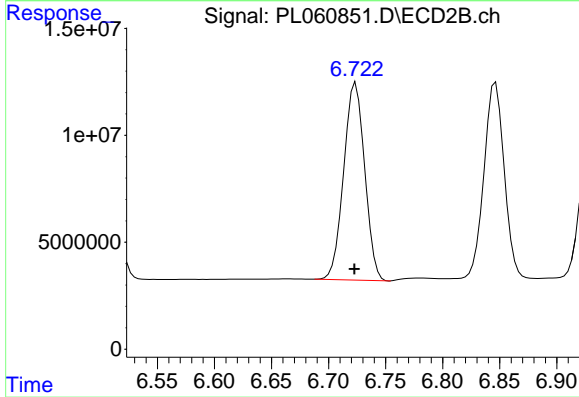
#13 Dieldrin

R.T.: 6.505 min  
 Delta R.T.: 0.000 min  
 Response: 144933449  
 Conc: 47.09 ng/ml



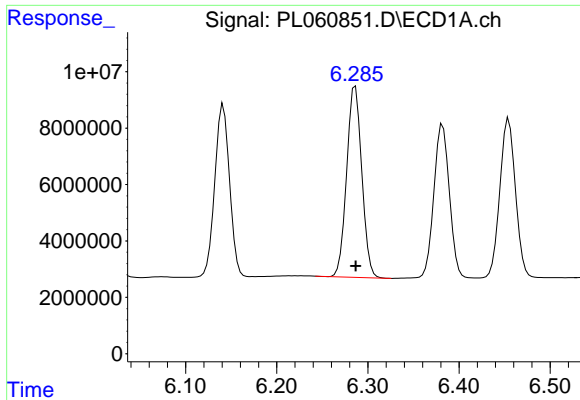
#14 Endrin

R.T.: 6.014 min  
 Delta R.T.: 0.000 min  
 Response: 77493823  
 Conc: 51.22 ng/ml



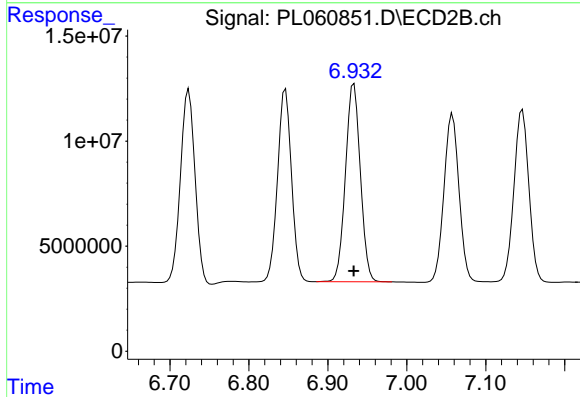
#14 Endrin

R.T.: 6.724 min  
 Delta R.T.: 0.001 min  
 Response: 118312346  
 Conc: 45.54 ng/ml

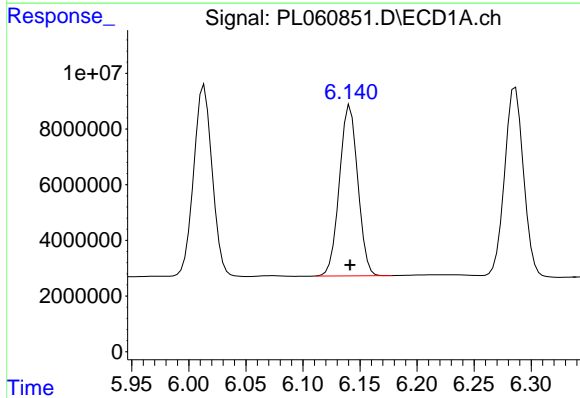


#15 Endosulfan II  
 R.T.: 6.286 min  
 Delta R.T.: 0.000 min  
 Response: 78165650  
 Conc: 51.84 ng/ml

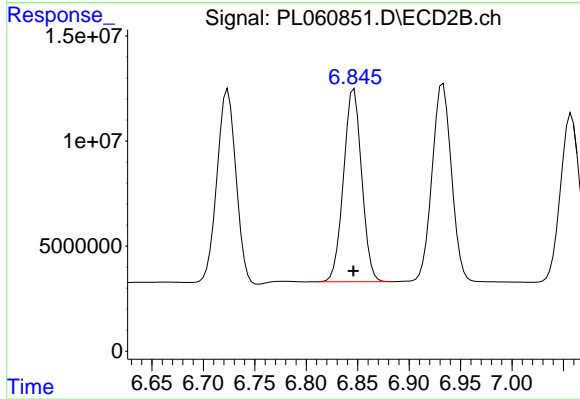
Instrument :  
 ECD\_L  
 ClientSampled :



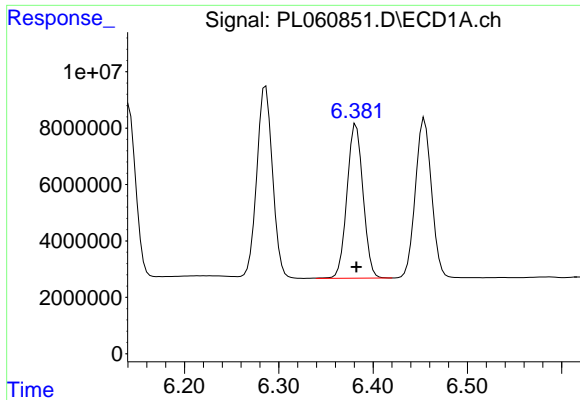
#15 Endosulfan II  
 R.T.: 6.933 min  
 Delta R.T.: 0.000 min  
 Response: 123844669  
 Conc: 47.48 ng/ml



#16 4,4'-DDD  
 R.T.: 6.141 min  
 Delta R.T.: 0.000 min  
 Response: 68781475  
 Conc: 53.69 ng/ml

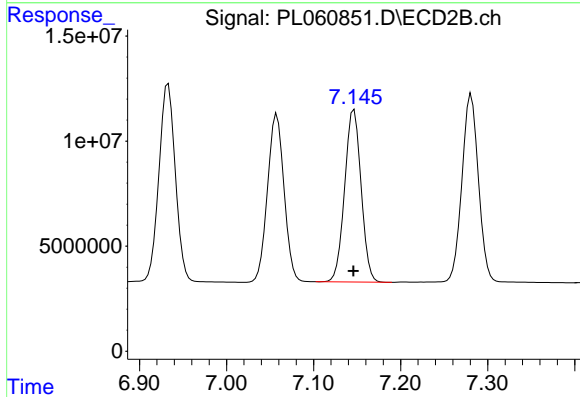


#16 4,4'-DDD  
 R.T.: 6.846 min  
 Delta R.T.: 0.000 min  
 Response: 112791260  
 Conc: 48.36 ng/ml

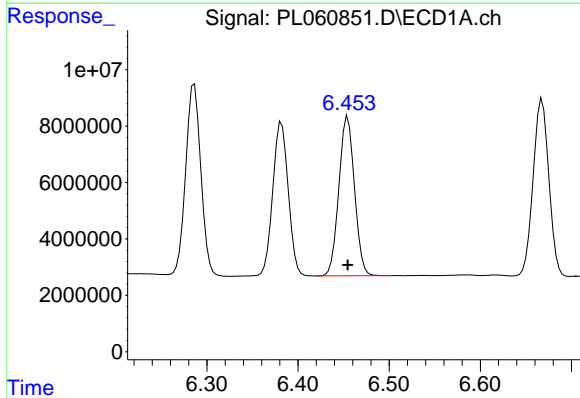


#17 4,4'-DDT  
 R.T.: 6.382 min  
 Delta R.T.: 0.000 min  
 Response: 64774371  
 Conc: 54.02 ng/ml

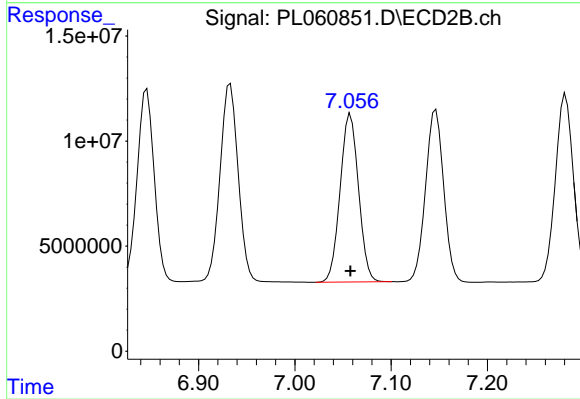
Instrument :  
 ECD\_L  
 ClientSampleId :



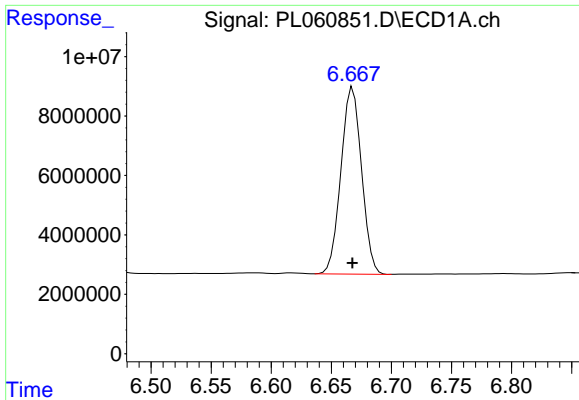
#17 4,4'-DDT  
 R.T.: 7.146 min  
 Delta R.T.: 0.000 min  
 Response: 107580837  
 Conc: 49.57 ng/ml



#18 Endrin aldehyde  
 R.T.: 6.455 min  
 Delta R.T.: 0.000 min  
 Response: 67407940  
 Conc: 52.27 ng/ml

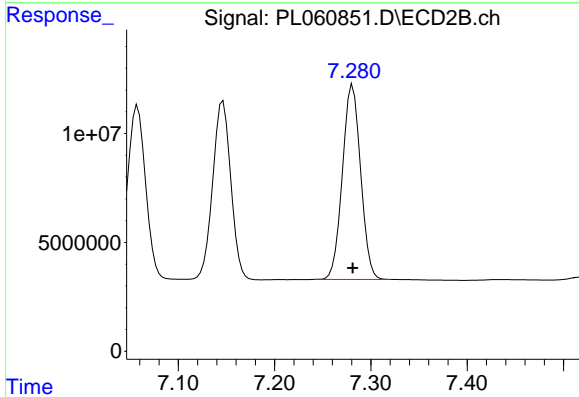


#18 Endrin aldehyde  
 R.T.: 7.058 min  
 Delta R.T.: 0.000 min  
 Response: 105874370  
 Conc: 48.92 ng/ml

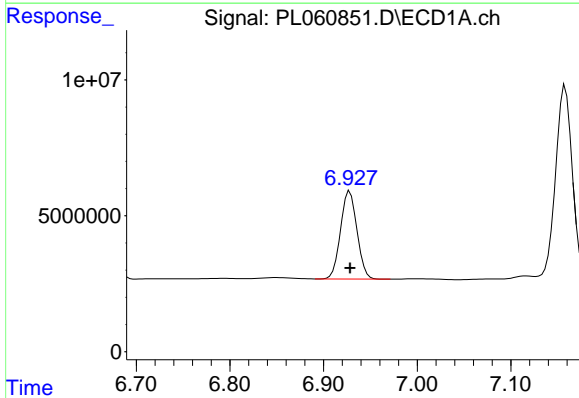


#19 Endosulfan Sulfate  
R.T.: 6.668 min  
Delta R.T.: 0.000 min  
Response: 75224014  
Conc: 51.87 ng/ml

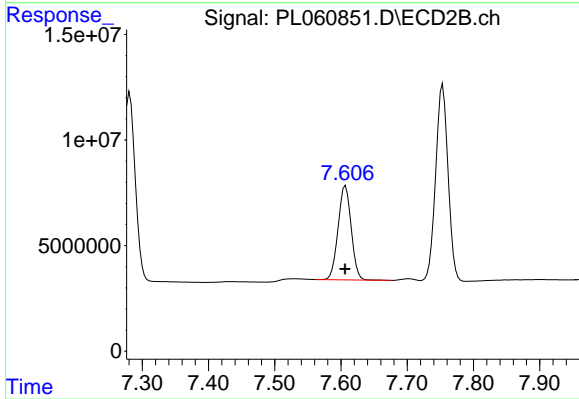
Instrument :  
ECD\_L  
ClientSampled :



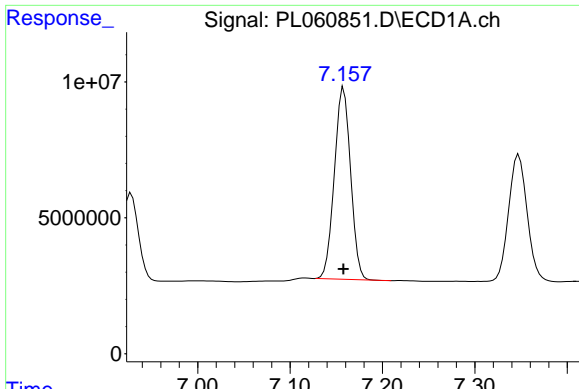
#19 Endosulfan Sulfate  
R.T.: 7.281 min  
Delta R.T.: 0.000 min  
Response: 117305088  
Conc: 49.44 ng/ml



#20 Methoxychlor  
R.T.: 6.928 min  
Delta R.T.: 0.000 min  
Response: 39484699  
Conc: 52.17 ng/ml



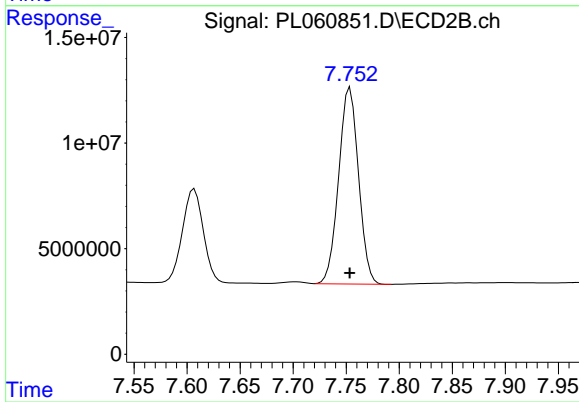
#20 Methoxychlor  
R.T.: 7.607 min  
Delta R.T.: 0.000 min  
Response: 61497109  
Conc: 49.15 ng/ml



#21 Endrin ketone

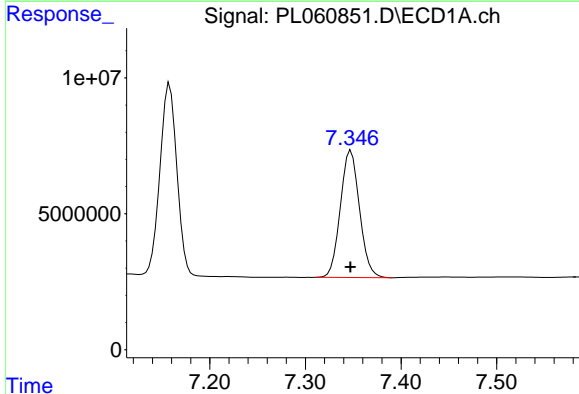
R.T.: 7.158 min  
Delta R.T.: 0.000 min  
Response: 86122739  
Conc: 55.45 ng/ml

Instrument :  
ECD\_L  
ClientSampled :



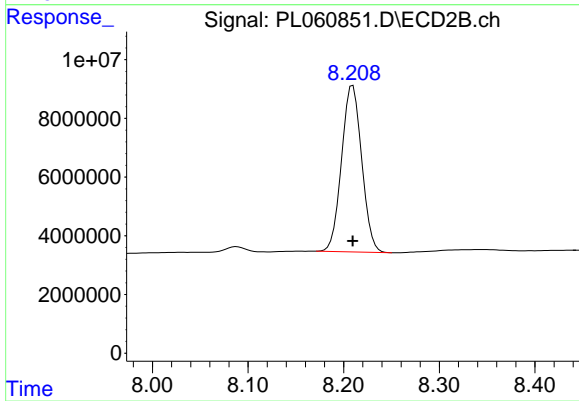
#21 Endrin ketone

R.T.: 7.754 min  
Delta R.T.: 0.000 min  
Response: 120913370  
Conc: 52.46 ng/ml



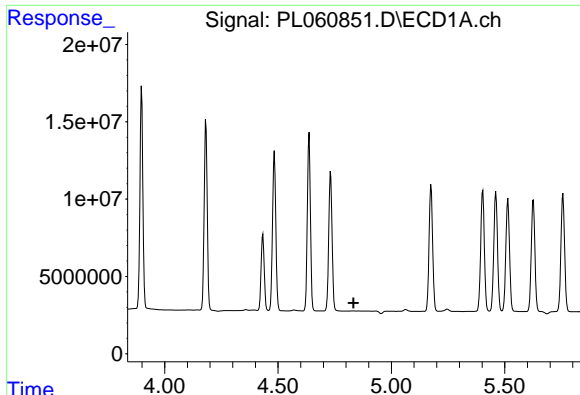
#22 Mirex

R.T.: 7.348 min  
Delta R.T.: 0.000 min  
Response: 65170120  
Conc: 54.44 ng/ml



#22 Mirex

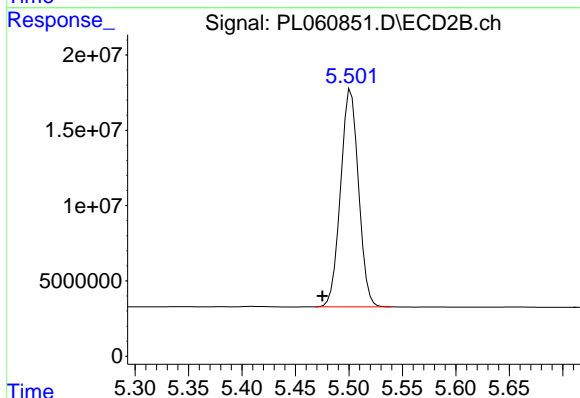
R.T.: 8.210 min  
Delta R.T.: 0.000 min  
Response: 83209894  
Conc: 51.51 ng/ml



#24 Chlordane-2

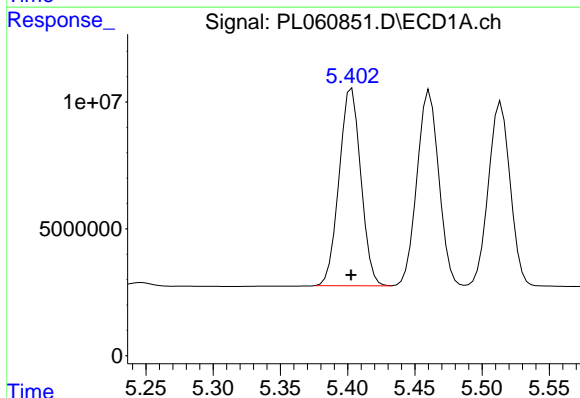
R.T.: 0.000 min  
 Exp R.T.: 4.833 min  
 Response: 0  
 Conc: N.D.

Instrument :  
 ECD\_L  
 ClientSampled :



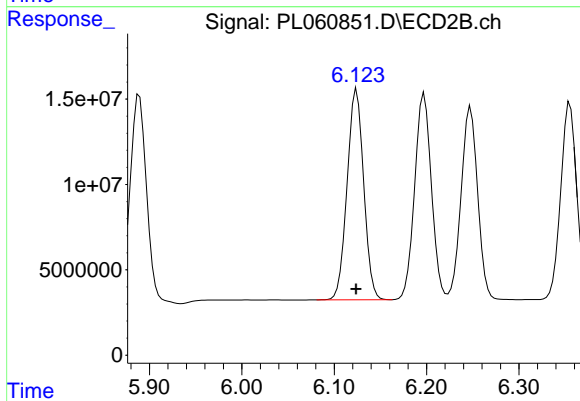
#24 Chlordane-2

R.T.: 5.502 min  
 Delta R.T.: 0.027 min  
 Response: 168980193  
 Conc: 1569.01 ng/ml



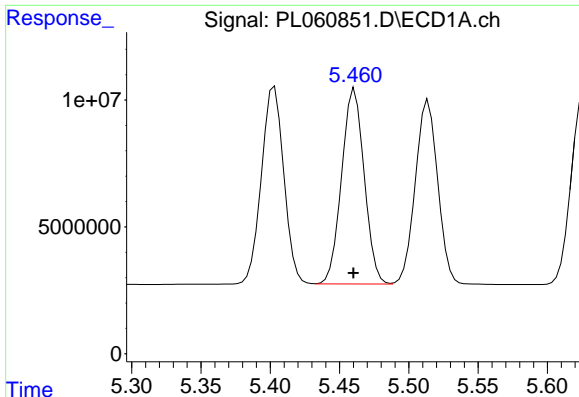
#25 Chlordane-3

R.T.: 5.403 min  
 Delta R.T.: 0.000 min  
 Response: 87184362  
 Conc: 624.05 ng/ml



#25 Chlordane-3

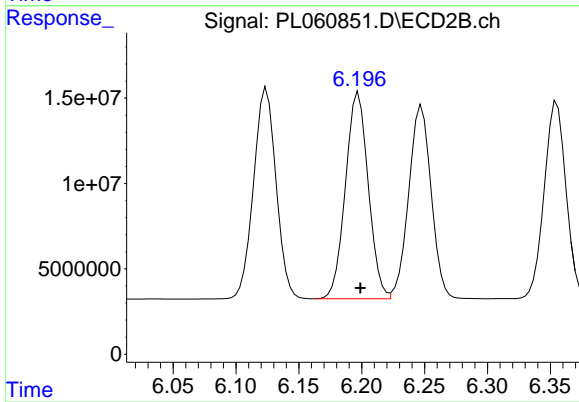
R.T.: 6.124 min  
 Delta R.T.: 0.000 min  
 Response: 153956298  
 Conc: 381.79 ng/ml



#26 Chlordane-4

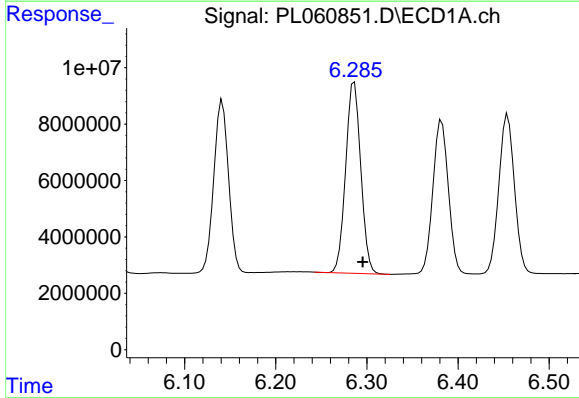
R.T.: 5.461 min  
 Delta R.T.: 0.000 min  
 Response: 87293989  
 Conc: 762.32 ng/ml

Instrument :  
 ECD\_L  
 ClientSampled :



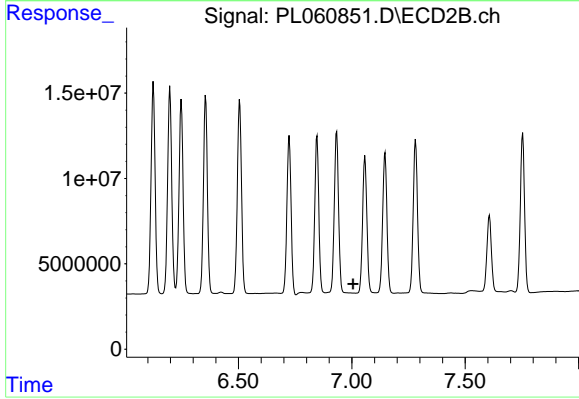
#26 Chlordane-4

R.T.: 6.197 min  
 Delta R.T.: -0.001 min  
 Response: 152710093  
 Conc: 309.88 ng/ml



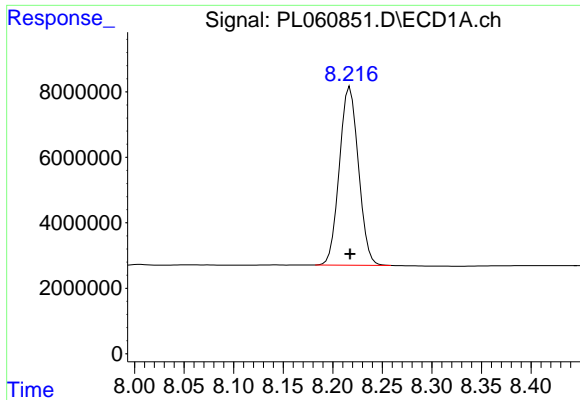
#27 Chlordane-5

R.T.: 6.286 min  
 Delta R.T.: -0.009 min  
 Response: 78165650  
 Conc: 1568.26 ng/ml



#27 Chlordane-5

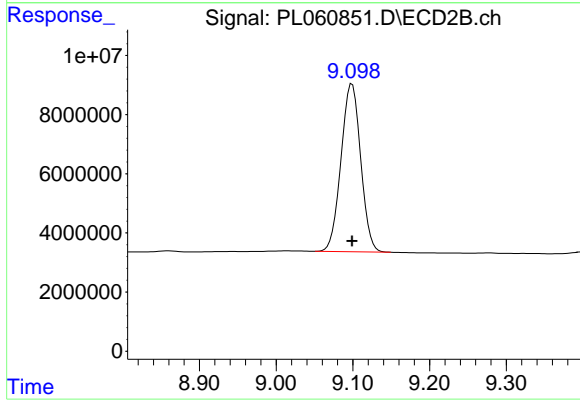
R.T.: 0.000 min  
 Exp R.T. : 7.005 min  
 Response: 0  
 Conc: N.D.



#28 Decachlorobiphenyl

R.T.: 8.217 min  
Delta R.T.: 0.000 min  
Response: 72917134  
Conc: 51.05 ng/ml

Instrument :  
ECD\_L  
ClientSampleId :



#28 Decachlorobiphenyl

R.T.: 9.099 min  
Delta R.T.: 0.000 min  
Response: 101620843  
Conc: 50.28 ng/ml