

Data Path : Z:\pestpcbsrv\HPCHEM1\ECD\_L\Data\PL081920\  
 Data File : PL060829.D  
 Signal(s) : Signal #1: ECD1A.ch Signal #2: ECD2B.ch  
 Acq On : 19 Aug 2020 09:42  
 Operator : DD\AJ  
 Sample : I.BLK  
 Misc :  
 ALS Vial : 2 Sample Multiplier: 1

Instrument :  
 ECD\_L  
 ClientSampleId :  
 I.BLK

Integration File signal 1: autoint1.e  
 Integration File signal 2: autoint2.e  
 Quant Time: Aug 19 15:50:55 2020  
 Quant Method : Z:\pestpcbsrv\HPCHEM1\ECD\_L\methods\PL081820.M  
 Quant Title : GC Extractables  
 QLast Update : Wed Aug 19 06:13:38 2020  
 Response via : Initial Calibration  
 Integrator: ChemStation

Volume Inj. : 1 µl  
 Signal #1 Phase : ZB-MR2 Signal #2 Phase: ZB-MR1  
 Signal #1 Info : 30M x 0.32mm x0.2 Signal #2 Info : 30M x 0.32mm x0.5µm

| Compound                    | RT#1  | RT#2  | Resp#1   | Resp#2   | ng/ml  | ng/ml  |
|-----------------------------|-------|-------|----------|----------|--------|--------|
| -----                       |       |       |          |          |        |        |
| System Monitoring Compounds |       |       |          |          |        |        |
| 1) SA Tetrachlo...          | 3.462 | 4.009 | 35339939 | 52927059 | 21.169 | 19.027 |
| 28) SA Decachlor...         | 8.217 | 9.097 | 30254645 | 42979290 | 21.180 | 21.265 |

Target Compounds

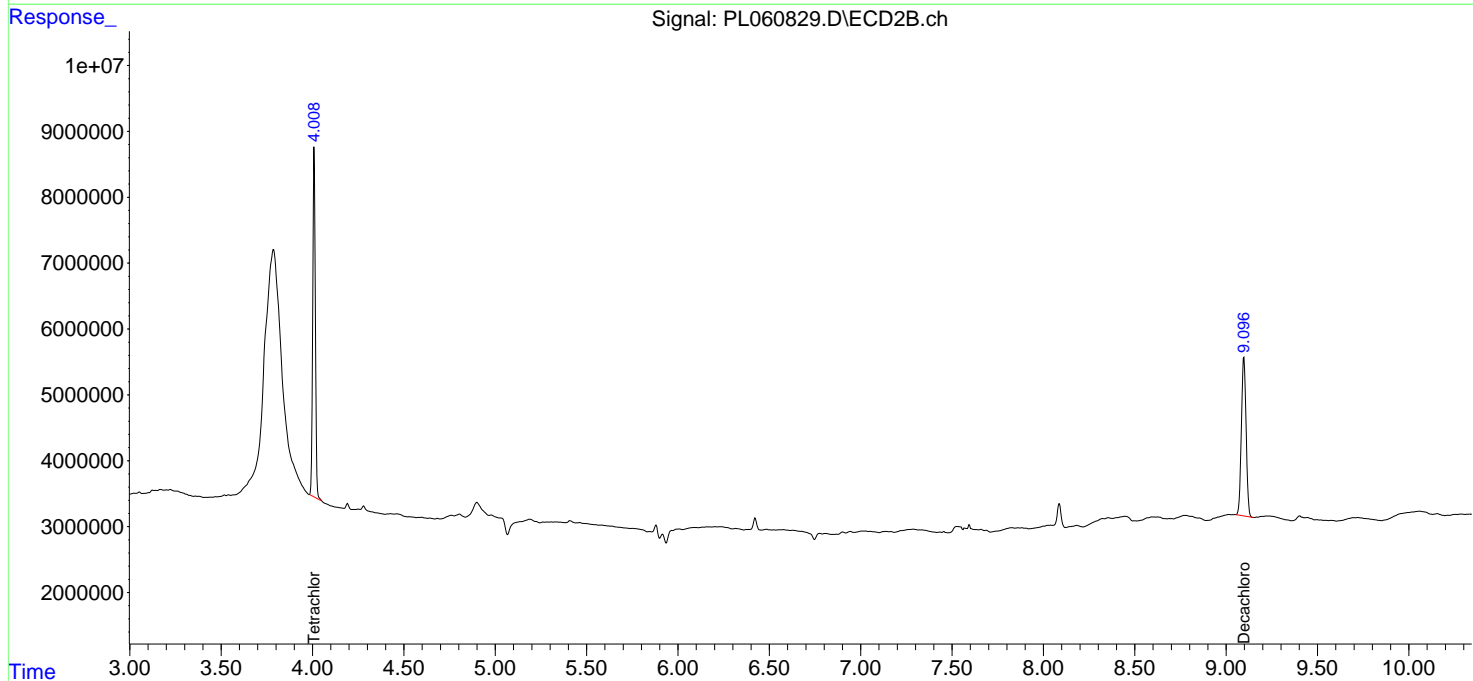
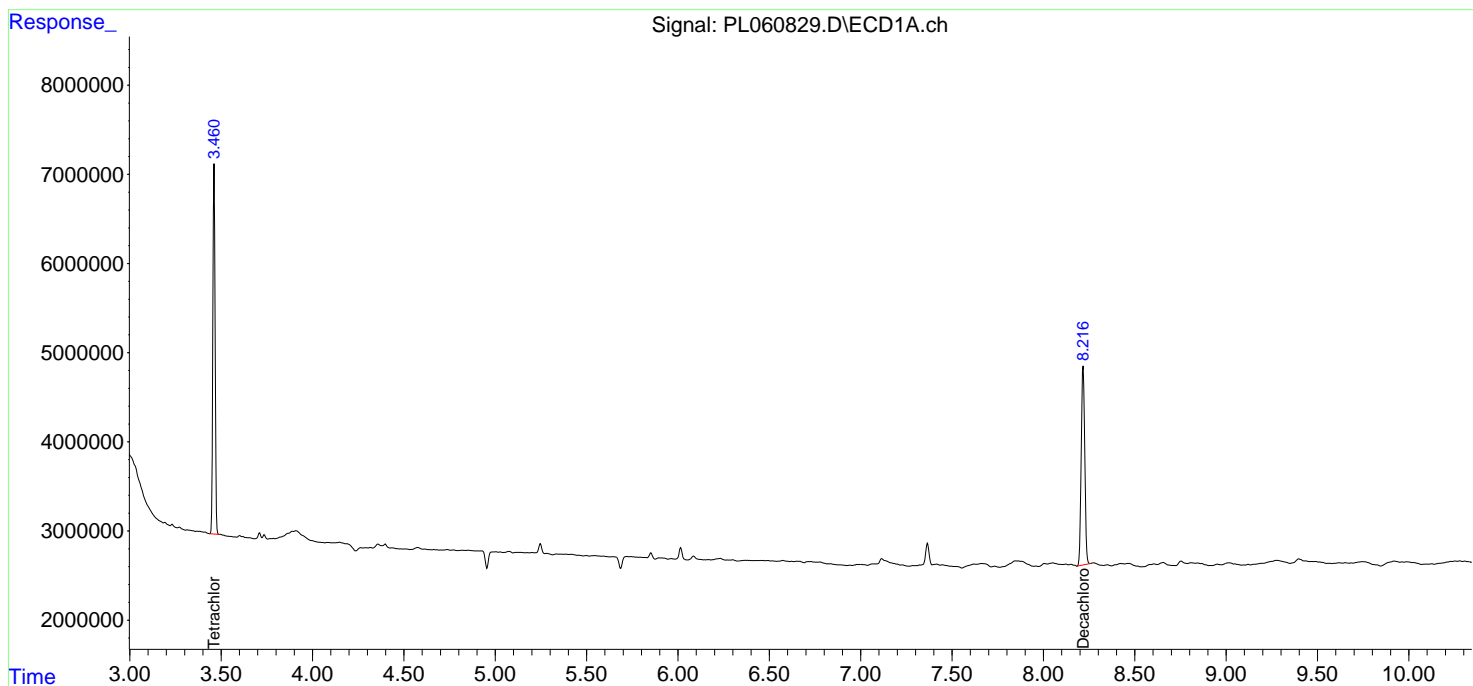
(f)=RT Delta > 1/2 Window (#)=Amounts differ by > 25% (m)=manual int.

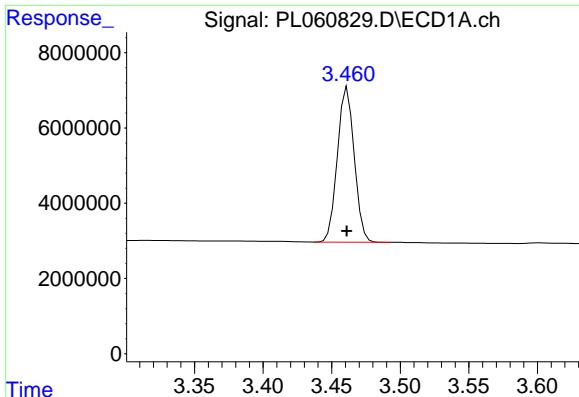
Data Path : Z:\pestpcbsrv\HPCHEM1\ECD\_L\Data\PL081920\  
 Data File : PL060829.D  
 Signal(s) : Signal #1: ECD1A.ch Signal #2: ECD2B.ch  
 Acq On : 19 Aug 2020 09:42  
 Operator : DD\AJ  
 Sample : I.BLK  
 Misc :  
 ALS Vial : 2 Sample Multiplier: 1

Instrument :  
 ECD\_L  
 ClientSampled :  
 I.BLK

Integration File signal 1: autoint1.e  
 Integration File signal 2: autoint2.e  
 Quant Time: Aug 19 15:50:55 2020  
 Quant Method : Z:\pestpcbsrv\HPCHEM1\ECD\_L\methods\PL081820.M  
 Quant Title : GC Extractables  
 QLast Update : Wed Aug 19 06:13:38 2020  
 Response via : Initial Calibration  
 Integrator: ChemStation

Volume Inj. : 1 µl  
 Signal #1 Phase : ZB-MR2 Signal #2 Phase: ZB-MR1  
 Signal #1 Info : 30M x 0.32mm x0.2 Signal #2 Info : 30M x 0.32mm x0.5µm

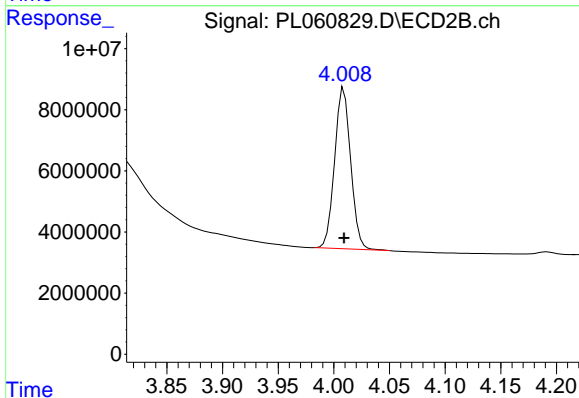




#1 Tetrachloro-m-xylene

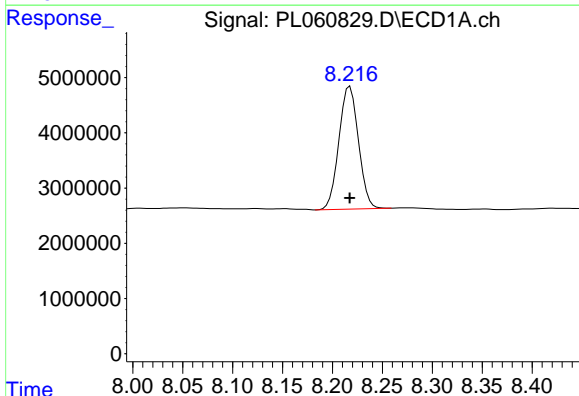
R.T.: 3.462 min  
 Delta R.T.: 0.000 min  
 Response: 35339939  
 Conc: 21.17 ng/ml

Instrument :  
 ECD\_L  
 ClientSampled :  
 I.BLK



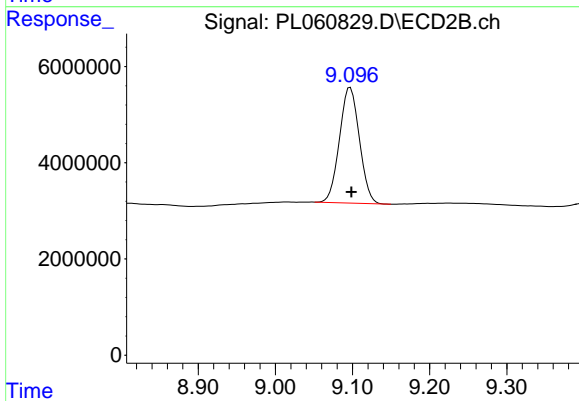
#1 Tetrachloro-m-xylene

R.T.: 4.009 min  
 Delta R.T.: 0.000 min  
 Response: 52927059  
 Conc: 19.03 ng/ml



#28 Decachlorobiphenyl

R.T.: 8.217 min  
 Delta R.T.: 0.000 min  
 Response: 30254645  
 Conc: 21.18 ng/ml



#28 Decachlorobiphenyl

R.T.: 9.097 min  
 Delta R.T.: -0.002 min  
 Response: 42979290  
 Conc: 21.26 ng/ml