

Data Path : Z:\pestpcbsrv\HPCHEM1\ECD_L\Data\PL081922\
 Data File : PL077191.D
 Signal(s) : Signal #1: ECD1A.ch Signal #2: ECD2B.ch
 Acq On : 18 Aug 2022 10:30
 Operator : AR\AJ
 Sample : N4224-01
 Misc :
 ALS Vial : 8 Sample Multiplier: 1

Instrument :
 ECD_L
 ClientSampleId :
 TP1-0816

Integration File signal 1: autoint1.e
 Integration File signal 2: autoint2.e
 Quant Time: Aug 18 22:42:07 2022
 Quant Method : Z:\pestpcbsrv\HPCHEM1\ECD_L\methods\PL080822.M
 Quant Title : GC Extractables
 QLast Update : Tue Aug 09 09:13:15 2022
 Response via : Initial Calibration
 Integrator: ChemStation

Volume Inj. : 1 µl
 Signal #1 Phase : ZB-MR2 Signal #2 Phase: ZB-MR1
 Signal #1 Info : 30M x 0.32mm x0.2 Signal #2 Info : 30M x 0.32mm x0.5µm

Compound	RT#1	RT#2	Resp#1	Resp#2	ng/ml	ng/ml
System Monitoring Compounds						
1) SA Tetrachlo...	3.418	2.635	19196975	49569719	19.578	17.316
28) SA Decachlor...	8.907	7.737	15940963	39651149	21.115	17.613
Target Compounds						
17) MA 4,4'-DDT	6.915	5.863	556390	1652377	0.724	0.729

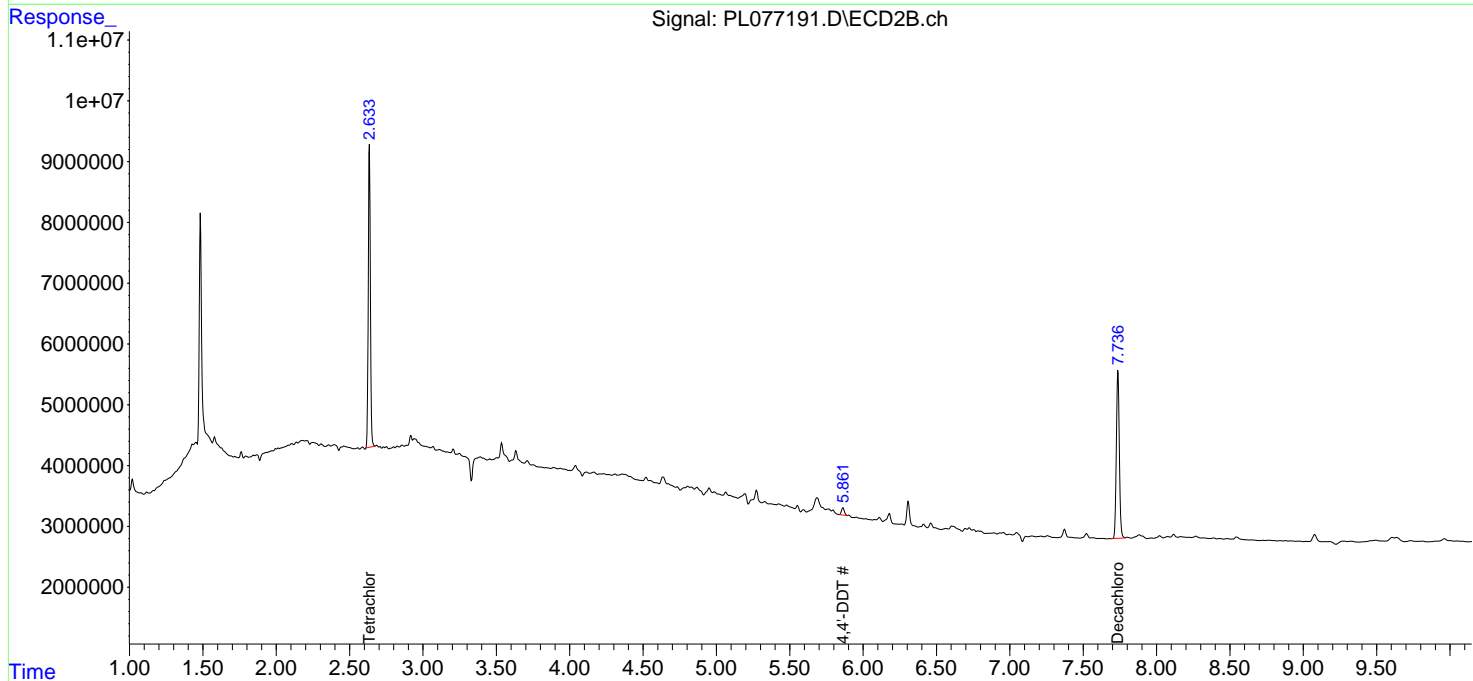
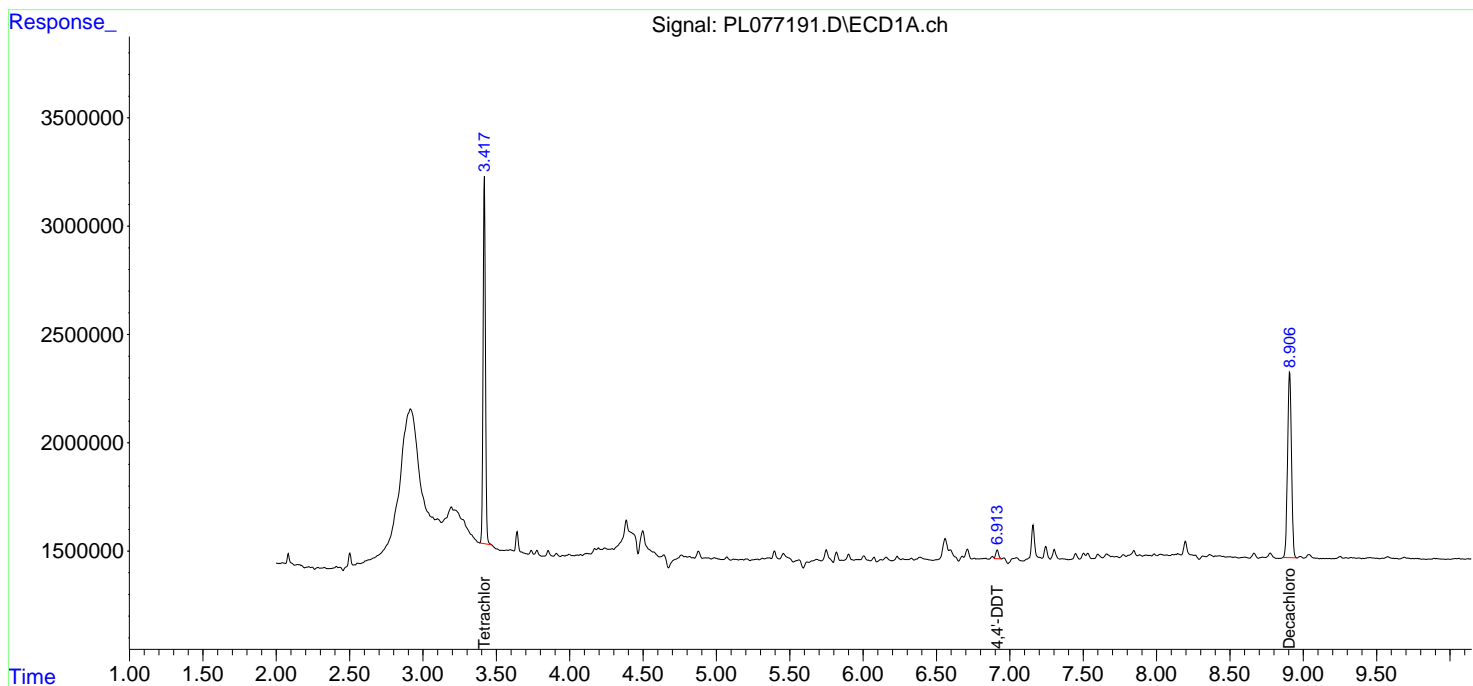
(f)=RT Delta > 1/2 Window (#)=Amounts differ by > 25% (m)=manual int.

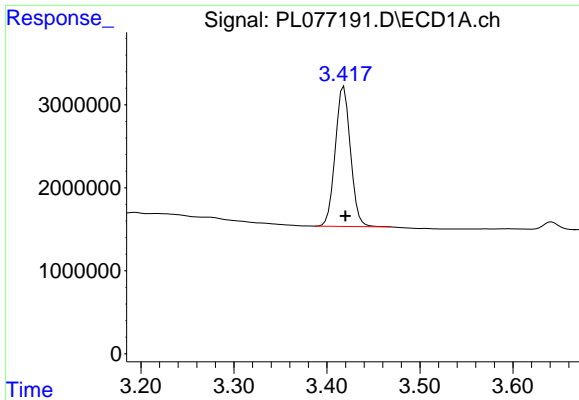
Data Path : Z:\pestpcbsrv\HPCHEM1\ECD_L\Data\PL081922\
 Data File : PL077191.D
 Signal(s) : Signal #1: ECD1A.ch Signal #2: ECD2B.ch
 Acq On : 18 Aug 2022 10:30
 Operator : AR\AJ
 Sample : N4224-01
 Misc :
 ALS Vial : 8 Sample Multiplier: 1

Instrument :
 ECD_L
 ClientSampleId :
 TP1-0816

Integration File signal 1: autoint1.e
 Integration File signal 2: autoint2.e
 Quant Time: Aug 18 22:42:07 2022
 Quant Method : Z:\pestpcbsrv\HPCHEM1\ECD_L\methods\PL080822.M
 Quant Title : GC Extractables
 QLast Update : Tue Aug 09 09:13:15 2022
 Response via : Initial Calibration
 Integrator: ChemStation

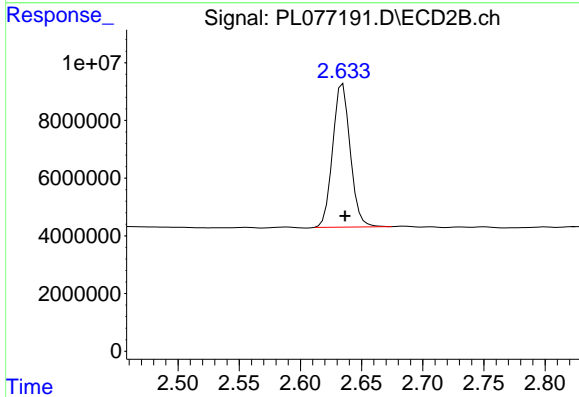
Volume Inj. : 1 µl
 Signal #1 Phase : ZB-MR2 Signal #2 Phase: ZB-MR1
 Signal #1 Info : 30M x 0.32mm x0.2 Signal #2 Info : 30M x 0.32mm x0.5µm



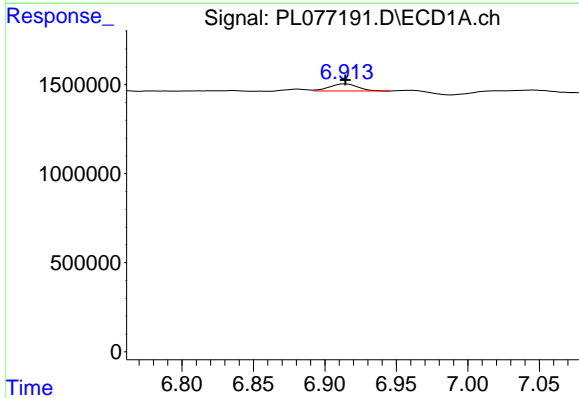


#1 Tetrachloro-m-xylene
 R.T.: 3.418 min
 Delta R.T.: -0.002 min
 Response: 19196975
 Conc: 19.58 ng/ml

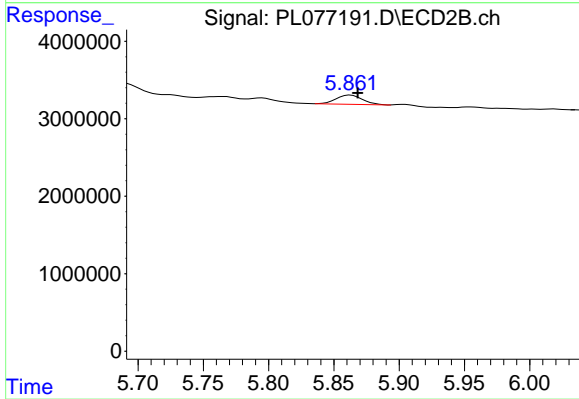
Instrument :
 ECD_L
 ClientSampleId :
 TP1-0816



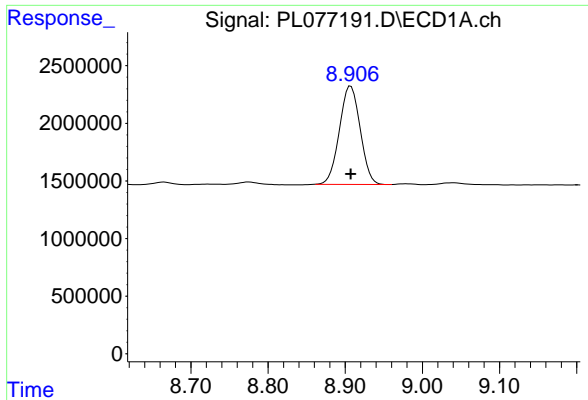
#1 Tetrachloro-m-xylene
 R.T.: 2.635 min
 Delta R.T.: -0.002 min
 Response: 49569719
 Conc: 17.32 ng/ml



#17 4,4'-DDT
 R.T.: 6.915 min
 Delta R.T.: 0.000 min
 Response: 556390
 Conc: 0.72 ng/ml



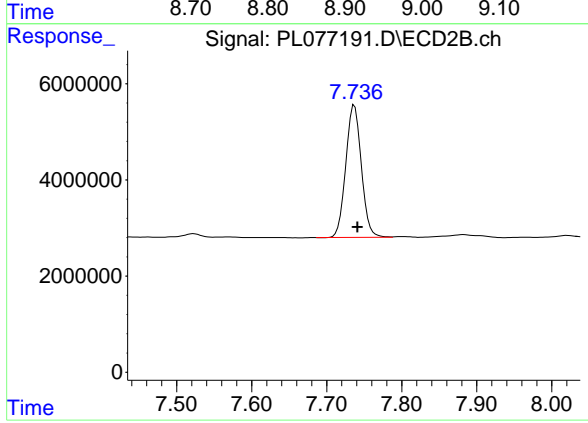
#17 4,4'-DDT
 R.T.: 5.863 min
 Delta R.T.: -0.005 min
 Response: 1652377
 Conc: 0.73 ng/ml



#28 Decachlorobiphenyl

R.T.: 8.907 min
Delta R.T.: 0.000 min
Response: 15940963
Conc: 21.12 ng/ml

Instrument :
ECD_L
ClientSampleId :
TP1-0816



#28 Decachlorobiphenyl

R.T.: 7.737 min
Delta R.T.: -0.004 min
Response: 39651149
Conc: 17.61 ng/ml